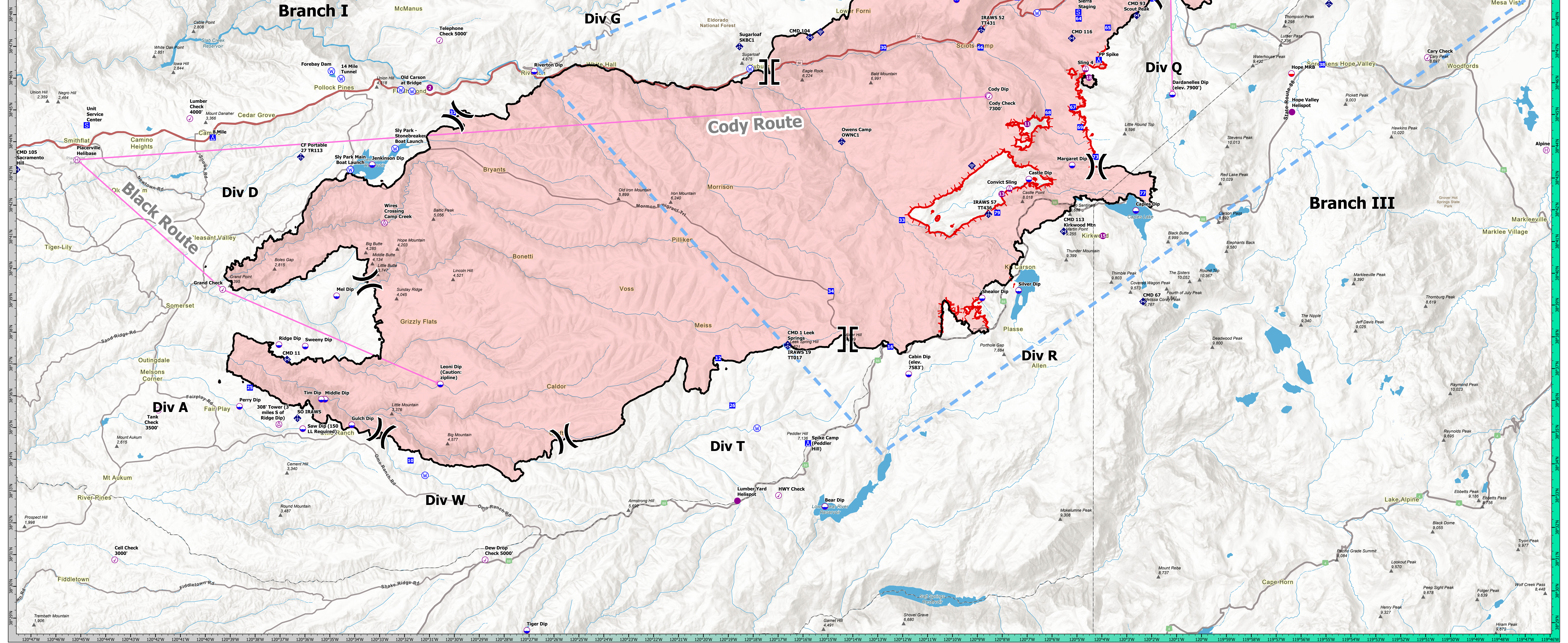


FC Peak Type	Label	Latitude	Longitude	FC Peak Type	Label	Latitude	Longitude	FC Peak Type	Label	Latitude	Longitude
Aerial Hazard	Wires Crossing Camp Creek	38° 41.522' N	120° 33.900' W	Dip Point	25	38° 53.750' N	120° 34.934' W	Dip Point	25	38° 53.750' N	120° 34.934' W
Aerial Hazard	Wires Crossing Camp Creek	38° 41.522' N	120° 33.900' W	Dip Point	77	38° 42.537' N	120° 33.207' W	Dip Point	77	38° 42.537' N	120° 33.207' W
Branch Break	Old Dip	38° 46.320' N	120° 32.422' W	Dip Point	88	38° 45.037' N	120° 33.189' W	Dip Point	88	38° 45.037' N	120° 33.189' W
Branch Break	Old Dip	38° 46.320' N	120° 32.422' W	Dip Point	89	38° 45.037' N	120° 33.189' W	Dip Point	89	38° 45.037' N	120° 33.189' W
Branch Break	Old Dip	38° 46.320' N	120° 32.422' W	Dip Point	90	38° 45.037' N	120° 33.189' W	Dip Point	90	38° 45.037' N	120° 33.189' W
Branch Break	Old Dip	38° 46.320' N	120° 32.422' W	Dip Point	91	38° 45.037' N	120° 33.189' W	Dip Point	91	38° 45.037' N	120° 33.189' W
Branch Break	Old Dip	38° 46.320' N	120° 32.422' W	Dip Point	92	38° 45.037' N	120° 33.189' W	Dip Point	92	38° 45.037' N	120° 33.189' W
Branch Break	Old Dip	38° 46.320' N	120° 32.422' W	Dip Point	93	38° 45.037' N	120° 33.189' W	Dip Point	93	38° 45.037' N	120° 33.189' W
Branch Break	Old Dip	38° 46.320' N	120° 32.422' W	Dip Point	94	38° 45.037' N	120° 33.189' W	Dip Point	94	38° 45.037' N	120° 33.189' W
Branch Break	Old Dip	38° 46.320' N	120° 32.422' W	Dip Point	95	38° 45.037' N	120° 33.189' W	Dip Point	95	38° 45.037' N	120° 33.189' W
Branch Break	Old Dip	38° 46.320' N	120° 32.422' W	Dip Point	96	38° 45.037' N	120° 33.189' W	Dip Point	96	38° 45.037' N	120° 33.189' W
Branch Break	Old Dip	38° 46.320' N	120° 32.422' W	Dip Point	97	38° 45.037' N	120° 33.189' W	Dip Point	97	38° 45.037' N	120° 33.189' W
Branch Break	Old Dip	38° 46.320' N	120° 32.422' W	Dip Point	98	38° 45.037' N	120° 33.189' W	Dip Point	98	38° 45.037' N	120° 33.189' W
Branch Break	Old Dip	38° 46.320' N	120° 32.422' W	Dip Point	99	38° 45.037' N	120° 33.189' W	Dip Point	99	38° 45.037' N	120° 33.189' W
Branch Break	Old Dip	38° 46.320' N	120° 32.422' W	Dip Point	100	38° 45.037' N	120° 33.189' W	Dip Point	100	38° 45.037' N	120° 33.189' W



- Aerial Hazard
- Check Point
- Dip Site
- Mobile Retardant Base
- Helispot
- Helibase
- Sling Site
- Unimproved Landing Area
- ✕ Division Break

- ▭ Branch Break
- ▭ Incident Command Post
- ▭ Drop Point
- ▭ Camp
- ▭ Staging Area
- ▭ Mobile Weather Unit
- ▭ Internet Access
- ▭ Repeater
- ▭ Water Source

- Aviation Routes
- △ Summits & Gaps
- Temporary Flight Restriction
- ▭ Fire Edge
- ▭ Contained Line
- ▭ Wildfire Daily Fire Perimeter
- ▭ Lake Tahoe Aquatic Invasives No Dip Zone

# AIR OPERATIONS

## Caldor

CA-ENF-24030

09/24/21

Caldor  
CA-ENF-24030  
**AIR OPS**  
09/24/21

Prepared by CRM1212 9/23/2021 1:21

Scale: 0 1.25 2.5 5 Miles  
1:50,000 NAD83 UTM 11N