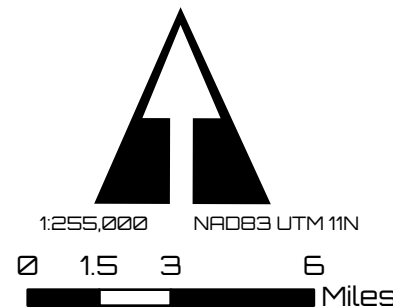
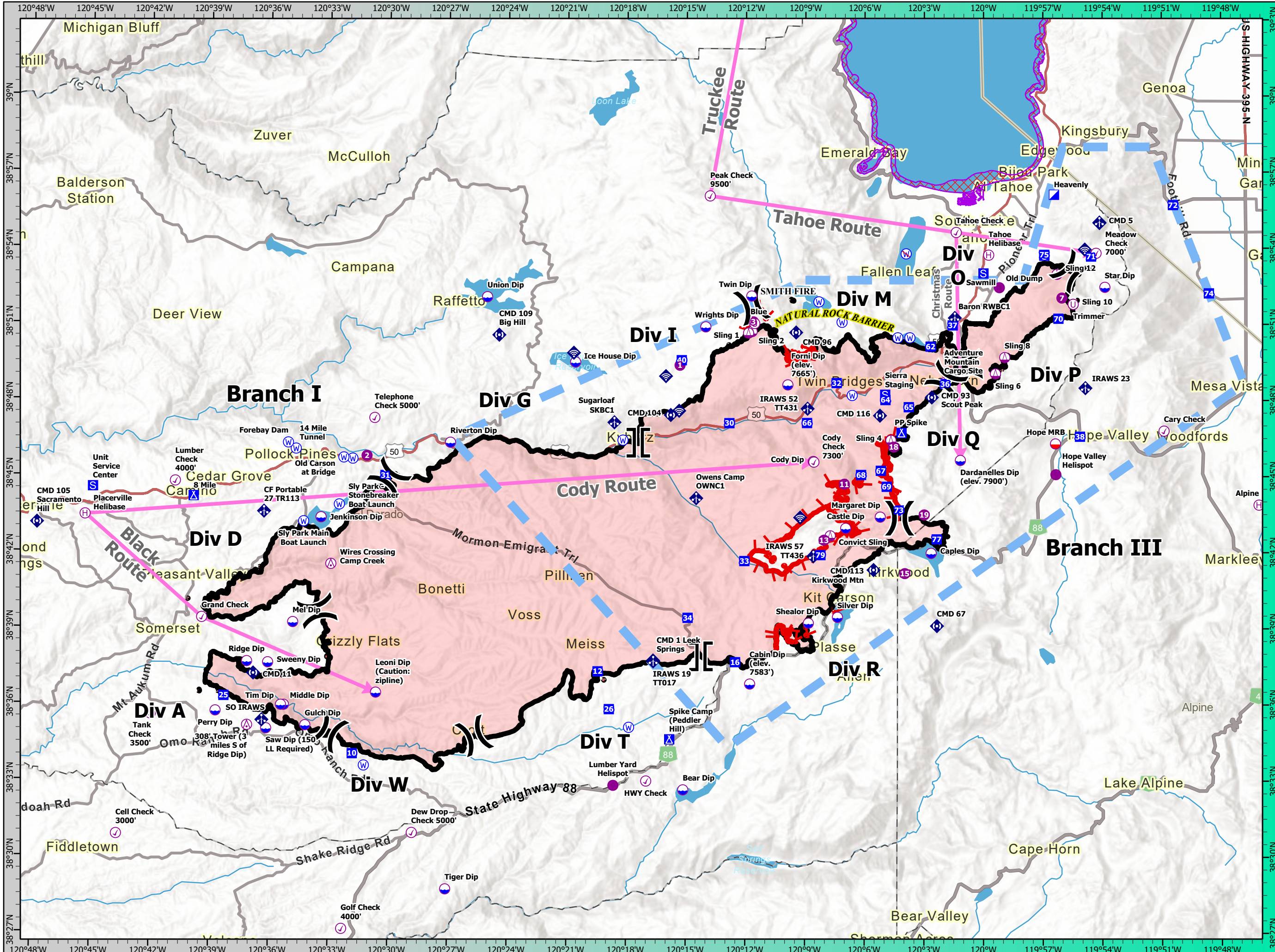


PILOT MAP
CALDOOR
CA-ENF-24030
09/27/21



- ⊙ Aerial Hazard
- ⊙ Check Point
- ⊙ Dip Site
- ⊙ Mobile Retardant Base
- ⊙ Helispot
- ⊙ Helibase
- ⊙ Sling Site
- ⊙ Unimproved Landing Area
-) Division Break
-] Branch Break
- ▣ Incident Command Post
- ▣ Drop Point
- ▣ Camp
- ▣ Staging Area
- ⊙ Mobile Weather Unit
- ⊙ Internet Access
- ⊙ Repeater
- ⊙ Water Source
- ⊙ Restricted Water Source
- ➔ Aviation Routes
- ▣ Temporary Flight Restriction
- ▣ Fire Edge
- ▣ Contained Line
- ▣ Wildfire Daily Fire Perimeter
- ▣ Lake Tahoe Aquatic Invasives No Dip Zone



FC Point Type	Label	Latitude WGS84 DDM	Longitude WGS84 DDM
Repeater	CMD 113 Kirkwood Mtn	38° 41.330' N	120° 05.546' W
Drop Point	73	38° 43.678' N	120° 04.268' W
Repeater	CMD 104	38° 47.424' N	120° 15.788' W
Drop Point	65	38° 47.748' N	120° 03.775' W
Division Break	Div I/M	38° 51.763' N	120° 11.709' W
Dip Site	Margaret Dip	38° 43.415' N	120° 05.212' W
Dip Site	Castle Dip	38° 42.972' N	120° 06.953' W
Mobile Weather Unit		38° 55.023' N	119° 54.144' W
Mobile Weather Unit	Owens Camp OWNC1	38° 44.149' N	120° 14.496' W
Helibase	Tahoe Helibase	38° 53.740' N	119° 59.741' W
Drop Point	40	38° 49.585' N	120° 15.241' W
Sling Site	Sling 8	38° 49.703' N	119° 58.931' W
Drop Point	64	38° 48.029' N	120° 04.954' W
Staging Area	Sierra Staging	38° 48.238' N	120° 04.967' W
Sling Site	Adventure Mountain Cargo Site	38° 48.714' N	120° 01.978' W
Dip Site	Star Dip	38° 52.470' N	119° 53.871' W
Drop Point	69	38° 44.611' N	120° 04.886' W
Drop Point	34	38° 39.435' N	120° 14.915' W
Check Point	Tahoe Check	38° 54.633' N	120° 01.381' W
Division Break	Div P/O	38° 49.336' N	120° 01.006' W
Drop Point	36	38° 48.662' N	120° 01.943' W
Drop Point	32	38° 48.695' N	120° 07.419' W
Dip Site	Union Dip	38° 52.060' N	120° 25.061' W
Dip Site	Twin Dip	38° 52.120' N	120° 11.711' W
Drop Point	62	38° 50.135' N	120° 02.674' W
Helispot	11	38° 44.712' N	120° 07.026' W
Mobile Retardant Base	Hope MRB	38° 46.300' N	119° 56.371' W
Drop Point	72	38° 55.708' N	119° 50.424' W
Helispot	3	38° 51.1044' N	120° 11.6264' W
Drop Point	70	38° 51.266' N	119° 56.203' W
Mobile Weather Unit	IRAWS 57 TT436	38° 41.868' N	120° 08.581' W
Water Source		38° 50.481' N	120° 04.331' W
Check Point	Meadow Check 7000'	38° 53.810' N	119° 54.315' W
Repeater	CMD 67	38° 39.123' N	120° 02.349' W
Drop Point	67	38° 45.242' N	120° 05.184' W
Dip Site	Wrights Dip	38° 50.900' N	120° 14.031' W
Water Source		38° 48.208' N	120° 06.633' W
Sling Site	Sling 10	38° 51.800' N	119° 55.474' W
Internet Access		38° 53.957' N	119° 54.884' W
Drop Point	79	38° 41.916' N	120° 08.225' W
Dip Site	Forni Dip (elev. 7665')	38° 48.620' N	120° 09.881' W
Branch Break	Div G/I	38° 46.330' N	120° 17.422' W
Mobile Weather Unit	IRAWS 23	38° 48.498' N	119° 54.859' W
Drop Point	66	38° 47.120' N	120° 08.836' W
Drop Point	71	38° 53.683' N	119° 54.567' W
Dip Site	Silver Dip	38° 39.465' N	120° 07.363' W
Water Source		38° 51.091' N	120° 07.149' W
Internet Access		38° 49.866' N	120° 20.688' W
Dip Site	Dardanelles Dip (elev. 7900')	38° 45.650' N	120° 01.171' W
Drop Point	30	38° 47.109' N	120° 12.829' W
Incident Command Post	Heavenly	38° 56.117' N	119° 56.441' W

FC Point Type	Label	Latitude WGS84 DDM	Longitude WGS84 DDM
Dip Site	Cody Dip	38° 45.606' N	120° 08.593' W
Drop Point	38	38° 46.584' N	119° 55.135' W
Sling Site	Sling 2	38° 50.720' N	120° 11.691' W
Drop Point	33	38° 41.677' N	120° 12.061' W
Repeater	CMD 109 Big Hill	38° 50.563' N	120° 24.459' W
Mobile Weather Unit	Sugarloaf SKBC1	38° 47.129' N	120° 18.631' W
Sling Site	Sling 12	38° 52.983' N	119° 56.291' W
Helispot	7	38° 52.048' N	119° 56.044' W
Camp	PP Spike	38° 46.732' N	120° 04.141' W
Check Point	Cary Check	38° 46.800' N	119° 50.891' W
Helispot	18	38° 46.175' N	120° 04.574' W
Repeater	CMD 5	38° 55.004' N	119° 54.143' W
Division Break	Div Q/R	38° 43.374' N	120° 04.236' W
Helispot	13	38° 42.505' N	120° 08.046' W
Dip Site	Caples Dip	38° 41.987' N	120° 02.644' W
Water Source		38° 50.481' N	120° 03.721' W
Repeater	CMD 116	38° 47.412' N	120° 05.229' W
Sling Site	Convict Sling	38° 42.675' N	120° 07.732' W
Water Source		38° 51.895' N	120° 08.317' W
Drop Point	75	38° 53.750' N	119° 56.934' W
Drop Point	77	38° 42.539' N	120° 02.363' W
Internet Access		38° 48.956' N	120° 16.035' W
Dip Site	Riverton Dip	38° 46.320' N	120° 26.901' W
Sling Site	Sling 1	38° 50.660' N	120° 11.871' W
Unimproved Landing Area	Trimmer	38° 51.800' N	119° 55.474' W
Restricted Water Source		38° 53.789' N	120° 03.914' W
Check Point	Peak Check 9500'	38° 56.062' N	120° 13.822' W
Water Source		38° 46.428' N	120° 18.199' W
Drop Point	37	38° 50.971' N	120° 01.559' W
Helispot	15	38° 41.190' N	120° 03.971' W
Drop Point	68	38° 45.075' N	120° 06.181' W
Helispot	Hope Valley Helispot	38° 45.089' N	119° 56.353' W
Sling Site	Sling 6	38° 49.062' N	119° 59.398' W
Check Point	Cody Check 7300'	38° 45.580' N	120° 08.561' W
Helispot	Old Dump	38° 52.457' N	119° 59.203' W
Repeater	CMD 93 Scout Peak	38° 48.131' N	120° 02.615' W
Unimproved Landing Area	Blue	38° 51.037' N	120° 11.561' W
Division Break	Div O/P	38° 53.090' N	119° 55.578' W
Dip Site	Shealor Dip	38° 39.230' N	120° 08.831' W
Division Break	Div M/Q	38° 48.797' N	120° 01.887' W
Staging Area		38° 53.717' N	119° 56.925' W
Mobile Weather Unit	Baron RWBC1	38° 51.264' N	120° 01.453' W
Helispot	1	38° 49.386' N	120° 15.328' W
Dip Site	Ice House Dip	38° 49.500' N	120° 20.601' W
Mobile Weather Unit	IRAWS 52 TT431	38° 47.683' N	120° 08.884' W
Sling Site	Sling 4	38° 46.440' N	120° 04.676' W
Repeater	CMD 96	38° 50.685' N	120° 09.467' W
Staging Area	Sawmill	38° 53.018' N	120° 00.005' W
Internet Access		38° 43.394' N	120° 09.250' W
Internet Access		38° 47.592' N	120° 15.366' W
Helispot	19	38° 43.503' N	120° 02.993' W