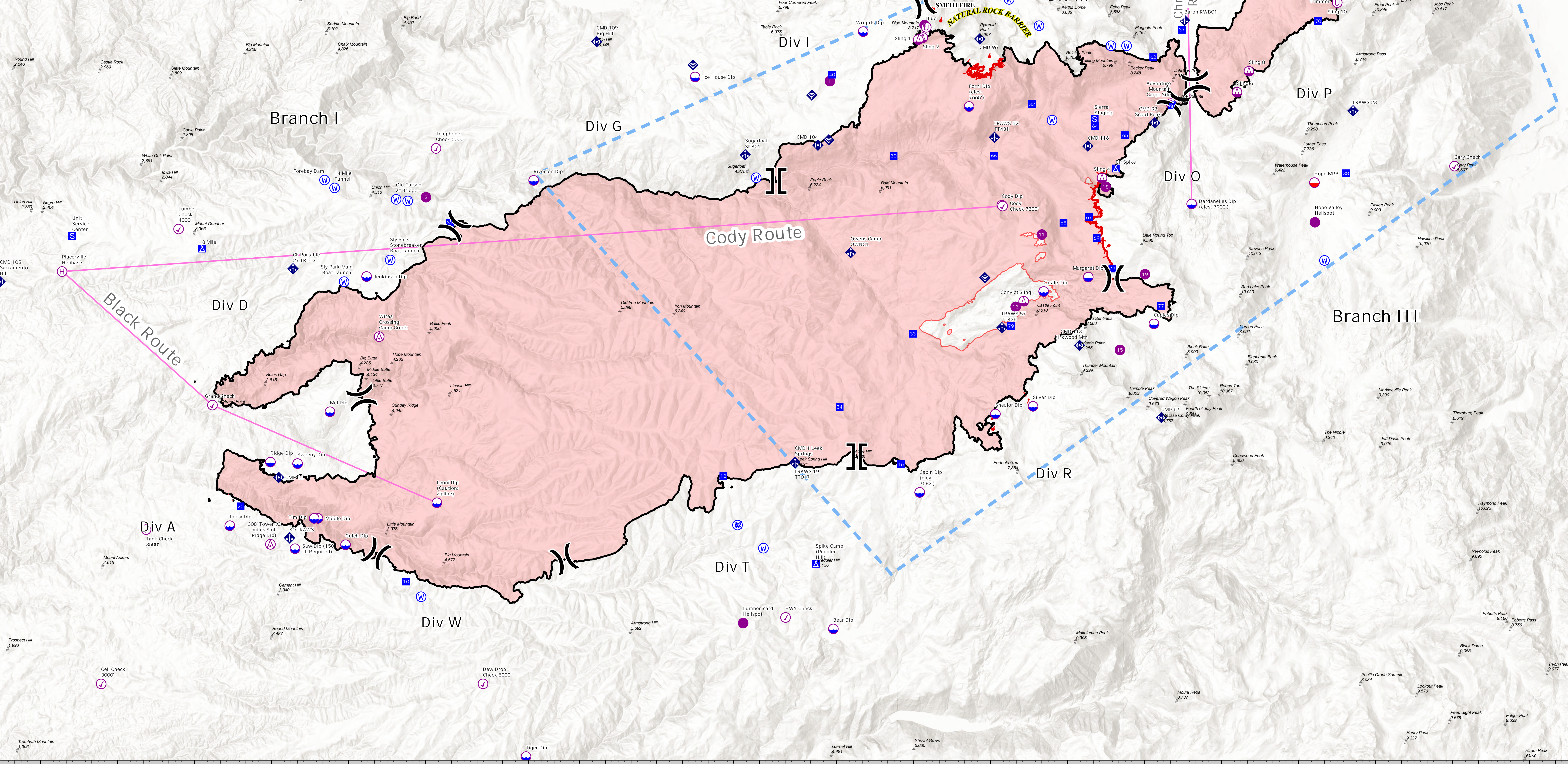


120°48'W 120°46'W 120°44'W 120°42'W 120°40'W 120°38'W 120°36'W 120°34'W 120°32'W 120°30'W 120°28'W 120°26'W 120°24'W 120°22'W 120°20'W 120°18'W 120°16'W 120°14'W 120°12'W 120°10'W 120°8'W 120°6'W 120°4'W 120°2'W 120°0'W 119°58'W 119°56'W 119°54'W 119°52'W 119°50'W 119°48'W 119°46'W 119°44'W 119°42'W

IC Point Type	Label	Latitude	WC84 DDM	Longitude	WC84 DDM	IC Point Type	Label	Latitude	WC84 DDM	Longitude	WC84 DDM
Trail Hazard	300 Tower (3 Miles S of Ridge Dip)	38° 35.322' N	120° 32.307' W	38° 35.322' N	120° 32.307' W	Mobile Weather Unit	OWNS Camp OWNC1	38° 33.062' N	119° 58.578' W	38° 33.062' N	119° 58.578' W
Aerial Hazard	Wire Crossing Camp Creek	38° 41.527' N	120° 29.295' W	38° 41.527' N	120° 29.295' W	Mobile Weather Unit	OWNS Camp OWNC1	38° 31.149' N	120° 14.496' W	38° 31.149' N	120° 14.496' W
Branch Break	Div C1	38° 46.332' N	120° 11.622' W	38° 46.332' N	120° 11.622' W	Mobile Weather Unit	IRAWS 51 TT431	38° 31.880' N	120° 08.987' W	38° 31.880' N	120° 08.987' W
Branch Break	Div C2	38° 33.918' N	120° 11.622' W	38° 33.918' N	120° 11.622' W	Mobile Weather Unit	OWNS Camp OWNC1	38° 30.984' N	120° 06.299' W	38° 30.984' N	120° 06.299' W
Check Point	Spike Camp (Packer Hill)	38° 34.445' N	120° 15.622' W	38° 34.445' N	120° 15.622' W	Mobile Weather Unit	IRAWS 50 IRAWS	38° 29.289' N	120° 06.287' W	38° 29.289' N	120° 06.287' W
Check Point	WV Vale	38° 40.524' N	120° 11.418' W	38° 40.524' N	120° 11.418' W	Mobile Weather Unit	IRAWS 23	38° 28.488' N	119° 54.859' W	38° 28.488' N	119° 54.859' W
Check Point	8 Mile	38° 44.178' N	120° 09.842' W	38° 44.178' N	120° 09.842' W	Mobile Weather Unit	IRAWS 19 IRAWS	38° 27.716' N	120° 16.445' W	38° 27.716' N	120° 16.445' W
Check Point	Highway Check 1000	38° 43.282' N	120° 07.722' W	38° 43.282' N	120° 07.722' W	Mobile Weather Unit	Sagehen RWBC1	38° 27.128' N	120° 18.031' W	38° 27.128' N	120° 18.031' W
Check Point	Grand Check	38° 39.402' N	120° 09.400' W	38° 39.402' N	120° 09.400' W	Mobile Weather Unit	Baron RWBC1	38° 25.244' N	120° 07.463' W	38° 25.244' N	120° 07.463' W
Check Point	Tahoe Check	38° 54.012' N	120° 01.388' W	38° 54.012' N	120° 01.388' W	Mobile Weather Unit	IRAWS 51 TT431	38° 21.622' N	120° 08.884' W	38° 21.622' N	120° 08.884' W
Check Point	Mount Check 1000	38° 53.282' N	120° 08.987' W	38° 53.282' N	120° 08.987' W	Mobile Weather Unit	OWNS Camp OWNC1	38° 21.388' N	120° 15.546' W	38° 21.388' N	120° 15.546' W
Check Point	Cody Check	38° 30.862' N	120° 01.667' W	38° 30.862' N	120° 01.667' W	Repeater	OM 104	38° 41.424' N	120° 15.788' W	38° 41.424' N	120° 15.788' W
Check Point	Letter Check 4000	38° 44.378' N	120° 07.712' W	38° 44.378' N	120° 07.712' W	Repeater	OM 11	38° 50.782' N	120° 14.602' W	38° 50.782' N	120° 14.602' W
Check Point	HWY Check	38° 33.072' N	120° 11.000' W	38° 33.072' N	120° 11.000' W	Repeater	OM 67	38° 39.122' N	120° 02.149' W	38° 39.122' N	120° 02.149' W
Check Point	Grain Check	38° 48.822' N	119° 58.899' W	38° 48.822' N	119° 58.899' W	Repeater	OM 11	38° 50.282' N	120° 36.797' W	38° 50.282' N	120° 36.797' W
Check Point	Down Check 1000	38° 30.906' N	120° 08.702' W	38° 30.906' N	120° 08.702' W	Repeater	OM 109 Big Hill	38° 50.502' N	120° 24.459' W	38° 50.502' N	120° 24.459' W
Check Point	Tank Check 3000	38° 35.352' N	120° 01.994' W	38° 35.352' N	120° 01.994' W	Repeater	OM D	38° 50.200' N	119° 54.143' W	38° 50.200' N	119° 54.143' W
Check Point	Peak Check 6000	38° 54.012' N	120° 11.622' W	38° 54.012' N	120° 11.622' W	Repeater	OM 116	38° 41.412' N	120° 02.229' W	38° 41.412' N	120° 02.229' W
Check Point	Cody Check 7300	38° 45.962' N	120° 08.545' W	38° 45.962' N	120° 08.545' W	Repeater	OM 105 Sacramento Hill	38° 43.122' N	120° 47.734' W	38° 43.122' N	120° 47.734' W
Check Point	Grain Dip	38° 35.442' N	120° 04.174' W	38° 35.442' N	120° 04.174' W	Repeater	OM 103 Snow Peak	38° 40.132' N	120° 02.045' W	38° 40.132' N	120° 02.045' W
Dip Site	Mail Dip	38° 39.228' N	120° 04.881' W	38° 39.228' N	120° 04.881' W	Repeater	OM 96	38° 50.682' N	120° 08.467' W	38° 50.682' N	120° 08.467' W
Dip Site	Henry Dip	38° 33.274' N	120° 08.695' W	38° 33.274' N	120° 08.695' W	Repeater	OM 11	38° 50.782' N	120° 02.045' W	38° 50.782' N	120° 02.045' W
Dip Site	Margaret Dip	38° 43.915' N	120° 06.232' W	38° 43.915' N	120° 06.232' W	Repeater	OM 116	38° 50.682' N	120° 02.045' W	38° 50.682' N	120° 02.045' W
Dip Site	Grain Dip	38° 35.442' N	120° 04.174' W	38° 35.442' N	120° 04.174' W	Sling Site	Sling 8	38° 39.702' N	119° 58.938' W	38° 39.702' N	119° 58.938' W
Dip Site	Ridge Dip	38° 31.678' N	120° 01.322' W	38° 31.678' N	120° 01.322' W	Sling Site	Adventure Mountain Cargo Site	38° 51.800' N	119° 56.414' W	38° 51.800' N	119° 56.414' W
Dip Site	Saw Dip	38° 52.472' N	119° 55.078' W	38° 52.472' N	119° 55.078' W	Sling Site	Sling 2	38° 50.720' N	119° 51.460' W	38° 50.720' N	119° 51.460' W
Dip Site	Grain Dip	38° 43.978' N	120° 01.954' W	38° 43.978' N	120° 01.954' W	Sling Site	Sling 12	38° 50.942' N	119° 56.261' W	38° 50.942' N	119° 56.261' W
Dip Site	Tank Dip	38° 52.122' N	120° 11.711' W	38° 52.122' N	120° 11.711' W	Sling Site	Convict Sling	38° 42.678' N	120° 07.732' W	38° 42.678' N	120° 07.732' W
Dip Site	Tiger Dip	38° 28.2078' N	120° 02.389' W	38° 28.2078' N	120° 02.389' W	Sling Site	Sling 4	38° 50.942' N	120° 11.871' W	38° 50.942' N	120° 11.871' W
Dip Site	HWY Dip	38° 50.902' N	120° 14.057' W	38° 50.902' N	120° 14.057' W	Sling Site	Sling 6	38° 49.042' N	119° 58.248' W	38° 49.042' N	119° 58.248' W
Dip Site	Star Dip (Hill Required)	38° 35.562' N	120° 03.278' W	38° 35.562' N	120° 03.278' W	Sling Site	Sling 25	38° 54.448' N	120° 04.636' W	38° 54.448' N	120° 04.636' W
Dip Site	Madia Dip	38° 35.942' N	120° 02.251' W	38° 35.942' N	120° 02.251' W	Staging Area	Sage Staging	38° 48.238' N	120° 04.947' W	38° 48.238' N	120° 04.947' W
Dip Site	Front Dip (elev. 7565)	38° 46.622' N	120° 08.688' W	38° 46.622' N	120° 08.688' W	Staging Area	Unit Service Center	38° 53.712' N	119° 56.929' W	38° 53.712' N	119° 56.929' W
Dip Site	Severe Dip	38° 31.042' N	120° 03.372' W	38° 31.042' N	120° 03.372' W	Staging Area	Sage Area	38° 41.424' N	120° 44.922' W	38° 41.424' N	120° 44.922' W
Dip Site	Silver Dip	38° 39.462' N	120° 07.302' W	38° 39.462' N	120° 07.302' W	Staging Area	Sawmill	38° 53.018' N	120° 00.000' W	38° 53.018' N	120° 00.000' W
Dip Site	Dormed Dip (elev. 7900)	38° 45.402' N	120° 01.171' W	38° 45.402' N	120° 01.171' W	Staging Area	OWNS Camp OWNC1	38° 51.800' N	119° 52.414' W	38° 51.800' N	119° 52.414' W
Dip Site	Cody Dip	38° 45.962' N	120° 08.595' W	38° 45.962' N	120° 08.595' W	Staging Area	Unimproved Landing Area Trimmer	38° 51.052' N	120° 11.568' W	38° 51.052' N	120° 11.568' W
Dip Site	Jenkin Dip	38° 42.318' N	120° 01.411' W	38° 42.318' N	120° 01.411' W	Water Source	Sly Park Main Boat Launch	38° 43.198' N	120° 24.289' W	38° 43.198' N	120° 24.289' W
Dip Site	Cabin Dip (elev. 7587)	38° 38.682' N	120° 11.788' W	38° 38.682' N	120° 11.788' W	Water Source	Sly Park - Stonebreaker Boat Launch	38° 48.362' N	120° 32.493' W	38° 48.362' N	120° 32.493' W
Dip Site	Tim Dip	38° 28.2078' N	120° 02.389' W	38° 28.2078' N	120° 02.389' W	Water Source	14 Mile Tunnel	38° 46.522' N	120° 34.667' W	38° 46.522' N	120° 34.667' W
Dip Site	Peak Dip	38° 32.692' N	120° 01.131' W	38° 32.692' N	120° 01.131' W	Water Source	Tahoe Dam	38° 48.362' N	120° 32.493' W	38° 48.362' N	120° 32.493' W
Dip Site	Caplan Dip	38° 41.902' N	120° 02.644' W	38° 41.902' N	120° 02.644' W	Water Source	Thunder Mountain	38° 40.502' N	120° 34.667' W	38° 40.502' N	120° 34.667' W
Dip Site	Blower Dip	38° 28.2078' N	120° 02.389' W	38° 28.2078' N	120° 02.389' W	Water Source	IRAWS 52 TT431	38° 51.090' N	120° 07.149' W	38° 51.090' N	120° 07.149' W
Dip Site	Decker Dip	38° 39.202' N	120° 08.839' W	38° 39.202' N	120° 08.839' W	Water Source	IRAWS 57 TT436	38° 48.478' N	120° 31.822' W	38° 48.478' N	120° 31.822' W
Dip Site	Lumber Dip (Caution - spikes)	38° 30.682' N	120° 05.818' W	38° 30.682' N	120° 05.818' W	Water Source	IRAWS 51 TT436	38° 50.878' N	120° 31.822' W	38° 50.878' N	120° 31.822' W
Dip Site	Ice House Dip	38° 49.902' N	120° 02.407' W	38° 49.902' N	120° 02.407' W	Water Source	IRAWS 51 TT436	38° 51.114' N	120° 11.812' W	38° 51.114' N	120° 11.812' W
Dip Site	Div A1	38° 30.682' N	120° 05.818' W	38° 30.682' N	120° 05.818' W	Water Source	IRAWS 51 TT436	38° 48.478' N	120° 31.822' W	38° 48.478' N	120° 31.822' W
Branch Break	Div A2	38° 49.202' N	120° 01.000' W	38° 49.202' N	120° 01.000' W	Water Source	IRAWS 51 TT436	38° 45.718' N	120° 32.275' W	38° 45.718' N	120° 32.275' W
Branch Break	Div A3	38° 46.332' N	120° 02.688' W	38° 46.332' N	120° 02.688' W	Water Source	IRAWS 51 TT436	38° 51.896' N	120° 08.317' W	38° 51.896' N	120° 08.317' W
Branch Break	Div A4	38° 39.462' N	120° 01.954' W	38° 39.462' N	120° 01.954' W	Water Source	IRAWS 51 TT436	38° 48.478' N	120° 18.199' W	38° 48.478' N	120° 18.199' W
Branch Break	Div A5	38° 39.462' N	120° 01.954' W	38° 39.462' N	120° 01.954' W	Water Source	IRAWS 51 TT436	38° 48.478' N	120° 31.213' W	38° 48.478' N	120° 31.213' W
Branch Break	Div A6	38° 41.572' N	120° 03.228' W	38° 41.572' N	120° 03.228' W	Water Source	IRAWS 51 TT436	38° 47.928' N	119° 52.980' W	38° 47.928' N	119° 52.980' W
Branch Break	Div A7	38° 34.902' N	120° 02.978' W	38° 34.902' N	120° 02.978' W	Water Source	IRAWS 51 TT436	38° 47.928' N	119° 52.980' W	38° 47.928' N	119° 52.980' W



 Prepared by: CA1M113 10/11/2021 20:35	<ul style="list-style-type: none"> Aerial Hazard Check Point Dip Site Mobile Retardant Base Helispot Helibase Sling Site Unimproved Landing Area Division Break	<ul style="list-style-type: none"> Branch Break Incident Command Post Drop Point Camp Staging Area Mobile Weather Unit Internet Access Repeater Water Source	<ul style="list-style-type: none"> Aviation Routes Summits & Gaps Temporary Flight Restriction Fire Edge Contained Line Wildfire Daily Fire Perimeter Lake Tahoe Aquatic Invasives No Dip Zone
---	---	--	--

AIR OPERATIONS

Caldor

CA-ENF-24030

October 2, 2021

Interagency Incident Management

0 1.25 2.5 5 Miles

1:75,000 NAD83 UTM 11N

Caldor

CA-ENF-24030

AIR OPS