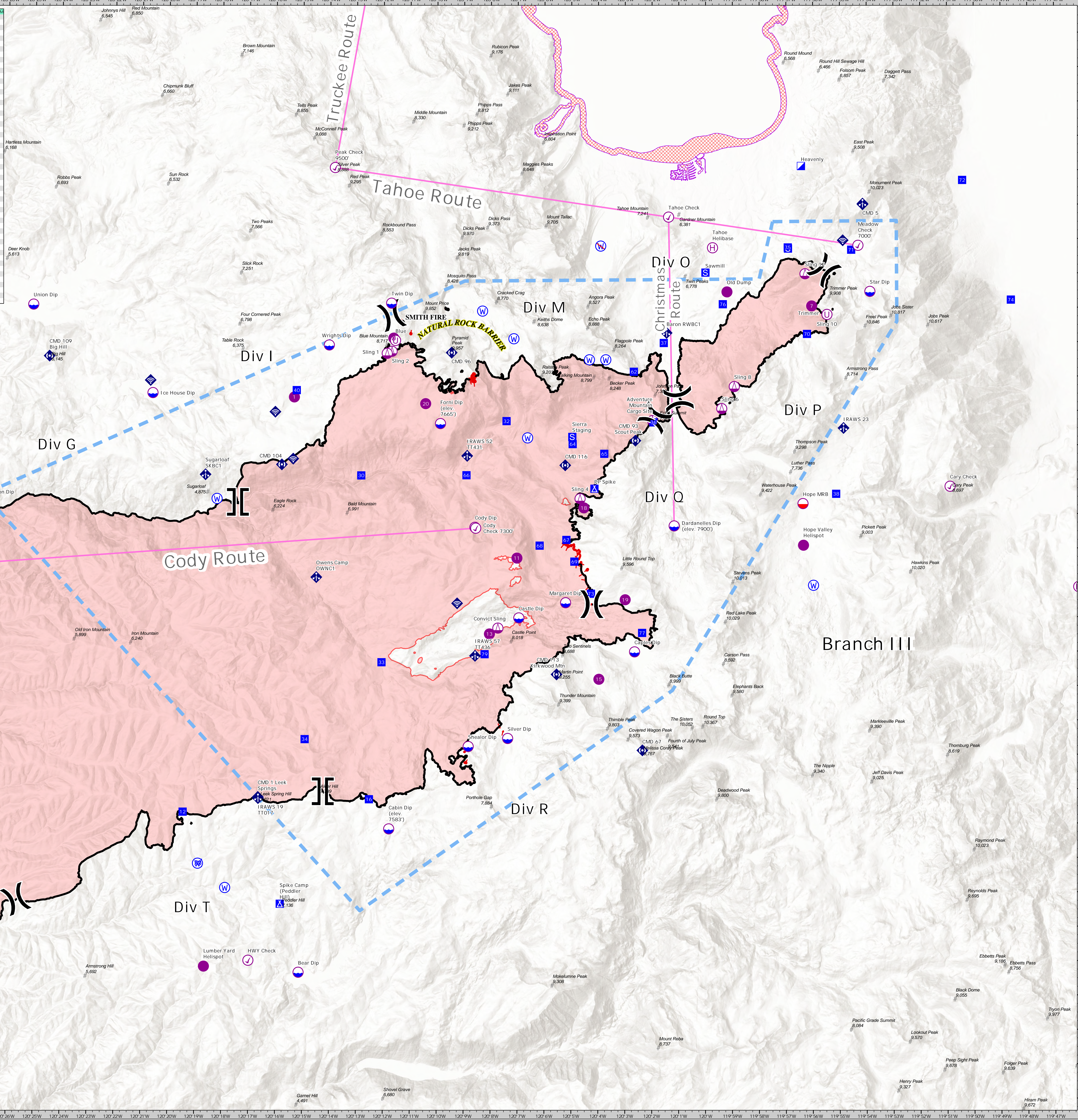


IC Point Type	Label	Latitude WGS84 DDM	Longitude WGS84 DDM	IC Point Type	Label	Latitude WGS84 DDM	Longitude WGS84 DDM
Aerial Hazard	300 Tower (3 Miles S of Ridge Dip)	38° 35' 32.9" N	120° 42' 10.0" W	Drop Point	Div M72	38° 48' 37.9" N	120° 41' 00.0" W
Branch Break	Wires Crossing Camp Creek	38° 41' 32.7" N	120° 42' 30.0" W	Drop Point	Div M74	38° 52' 27.8" N	120° 41' 03.7" W
Check Point	Div G1	38° 46' 30.2" N	120° 41' 22.0" W	Drop Point	73	38° 43' 28.9" N	120° 40' 28.0" W
Branch Break	Div G17	38° 37' 01.8" N	120° 41' 22.0" W	Drop Point	66	38° 47' 34.9" N	120° 40' 17.0" W
Check Point	Sly Park Camp (Packer Hill)	38° 34' 44.8" N	120° 41' 52.0" W	Drop Point	40	38° 49' 50.9" N	120° 41' 24.0" W
Check Point	Div G24	38° 40' 32.4" N	120° 41' 51.0" W	Drop Point	64	38° 48' 02.9" N	120° 40' 54.0" W
Check Point	8 Mile	38° 44' 17.9" N	120° 39' 48.0" W	Drop Point	69	38° 44' 41.1" N	120° 40' 08.0" W
Check Point	Hope Valley Check 1000	38° 41' 28.1" N	120° 39' 27.0" W	Drop Point	34	38° 34' 42.1" N	120° 41' 10.0" W
Check Point	Grand Check	38° 39' 40.2" N	120° 39' 40.0" W	Drop Point	36	38° 48' 42.9" N	120° 40' 34.0" W
Check Point	Tahoe Check	38° 54' 03.1" N	120° 41' 38.0" W	Drop Point	32	38° 46' 00.1" N	120° 40' 41.0" W
Check Point	Mountain Check 1000	38° 53' 38.2" N	120° 41' 38.0" W	Drop Point	62	38° 51' 35.9" N	120° 40' 24.0" W
Check Point	Call Check 3300	38° 30' 00.2" N	120° 41' 67.0" W	Drop Point	72	38° 55' 70.9" N	120° 41' 28.0" W
Check Point	Lumber Check 4000	38° 44' 00.0" N	120° 40' 00.0" W	Drop Point	31	38° 45' 07.9" N	120° 40' 33.0" W
Check Point	HWY Check	38° 33' 00.0" N	120° 41' 00.0" W	Drop Point	70	38° 51' 20.0" N	120° 41' 00.0" W
Check Point	Div G20	38° 48' 00.0" N	120° 40' 00.0" W	Drop Point	10	38° 53' 20.0" N	120° 39' 30.0" W
Check Point	Drop Check 1000	38° 30' 00.0" N	120° 40' 00.0" W	Drop Point	16	38° 31' 00.0" N	120° 40' 00.0" W
Check Point	Tank Check 3000	38° 35' 00.0" N	120° 41' 00.0" W	Drop Point	67	38° 42' 00.0" N	120° 40' 00.0" W
Check Point	Peak Check 9000	38° 50' 00.0" N	120° 41' 00.0" W	Drop Point	79	38° 41' 00.0" N	120° 40' 00.0" W
Check Point	Only Check 7300	38° 45' 00.0" N	120° 41' 00.0" W	Drop Point	26	38° 35' 00.0" N	120° 41' 00.0" W
Check Point	Peak Dip	38° 35' 00.0" N	120° 41' 00.0" W	Drop Point	66	38° 41' 00.0" N	120° 40' 00.0" W
Check Point	Mail Dip	38° 39' 20.0" N	120° 40' 00.0" W	Drop Point	71	38° 53' 00.0" N	120° 41' 00.0" W
Check Point	Henry Dip	38° 33' 20.0" N	120° 40' 00.0" W	Drop Point	13	38° 33' 20.0" N	120° 40' 00.0" W
Check Point	Margaret Dip	38° 43' 15.0" N	120° 40' 30.0" W	Drop Point	30	38° 41' 00.0" N	120° 41' 00.0" W
Check Point	Castle Dip	38° 42' 00.0" N	120° 40' 00.0" W	Drop Point	31	38° 45' 00.0" N	120° 41' 00.0" W
Check Point	Ridge Dip	38° 39' 00.0" N	120° 41' 00.0" W	Drop Point	33	38° 41' 00.0" N	120° 41' 00.0" W
Check Point	Saw Dip	38° 52' 00.0" N	120° 41' 00.0" W	Drop Point	75	38° 53' 00.0" N	120° 41' 00.0" W
Check Point	Upton Dip	38° 52' 00.0" N	120° 41' 00.0" W	Drop Point	38	38° 42' 00.0" N	120° 41' 00.0" W
Check Point	Twin Dip	38° 52' 00.0" N	120° 41' 00.0" W	Drop Point	37	38° 50' 00.0" N	120° 41' 00.0" W
Check Point	Tiger Dip	38° 20' 00.0" N	120° 41' 00.0" W	Drop Point	68	38° 40' 00.0" N	120° 41' 00.0" W
Check Point	Wright Dip	38° 50' 00.0" N	120° 41' 00.0" W	Drop Point	25	38° 50' 00.0" N	120° 41' 00.0" W
Check Point	Saw Dip (1150 LL Required)	38° 35' 00.0" N	120° 41' 00.0" W	Drop Point	23	38° 52' 00.0" N	120° 41' 00.0" W
Check Point	Middle Dip	38° 35' 00.0" N	120° 41' 00.0" W	Drop Point	76	38° 53' 00.0" N	120° 41' 00.0" W
Check Point	Front Dip (elev. 7650)	38° 48' 00.0" N	120° 40' 00.0" W	Drop Point	67	38° 48' 00.0" N	120° 40' 00.0" W
Check Point	Severe Dip	38° 31' 00.0" N	120° 41' 00.0" W	Drop Point	3	38° 44' 00.0" N	120° 41' 00.0" W
Check Point	Sliver Dip	38° 39' 00.0" N	120° 41' 00.0" W	Drop Point	11	38° 41' 00.0" N	120° 41' 00.0" W
Check Point	Domestic Dip (elev. 7900)	38° 45' 00.0" N	120° 41' 00.0" W	Drop Point	3	38° 51' 00.0" N	120° 41' 00.0" W
Check Point	Convict Dip	38° 45' 00.0" N	120° 41' 00.0" W	Drop Point	7	38° 52' 00.0" N	120° 41' 00.0" W
Check Point	Jenkinson Dip	38° 43' 00.0" N	120° 41' 00.0" W	Drop Point	19	38° 46' 15.0" N	120° 41' 00.0" W
Check Point	Cabin Dip (elev. 7580)	38° 36' 00.0" N	120° 41' 00.0" W	Drop Point	13	38° 42' 00.0" N	120° 41' 00.0" W
Check Point	Tim Dip	38° 35' 00.0" N	120° 41' 00.0" W	Drop Point	7	38° 41' 00.0" N	120° 41' 00.0" W
Check Point	Beel Dip	38° 32' 00.0" N	120° 41' 00.0" W	Drop Point	15	38° 41' 00.0" N	120° 41' 00.0" W
Check Point	Capitan Dip	38° 41' 00.0" N	120° 40' 00.0" W	Drop Point	10	38° 45' 00.0" N	120° 40' 00.0" W
Check Point	Blizzard Dip	38° 35' 00.0" N	120° 41' 00.0" W	Drop Point	2	38° 42' 00.0" N	120° 41' 00.0" W
Check Point	Shoofly Dip	38° 39' 00.0" N	120° 41' 00.0" W	Drop Point	7	38° 40' 00.0" N	120° 41' 00.0" W
Check Point	Lumber Yard (Caution - spikes)	38° 49' 00.0" N	120° 40' 00.0" W	Drop Point	19	38° 43' 00.0" N	120° 41' 00.0" W
Check Point	Div M1	38° 51' 00.0" N	120° 41' 00.0" W	Drop Point	20	38° 49' 00.0" N	120° 41' 00.0" W
Check Point	Div M2	38° 49' 30.0" N	120° 41' 00.0" W	Drop Point	19	38° 51' 17.0" N	120° 41' 00.0" W
Check Point	Div M3	38° 46' 00.0" N	120° 40' 00.0" W	Drop Point	17	38° 53' 00.0" N	120° 41' 00.0" W
Check Point	Div M4	38° 44' 00.0" N	120° 40' 00.0" W	Drop Point	17	38° 49' 00.0" N	120° 40' 00.0" W
Check Point	Div M5	38° 43' 00.0" N	120° 40' 00.0" W	Drop Point	17	38° 43' 00.0" N	120° 40' 00.0" W
Check Point	Div M6	38° 34' 00.0" N	120° 40' 00.0" W	Drop Point	17	38° 41' 50.0" N	120° 40' 00.0" W
Check Point	Div M7	38° 33' 00.0" N	120° 40' 00.0" W	Drop Point	17	38° 40' 00.0" N	120° 40' 00.0" W



- Aerial Hazard
- Check Point
- Dip Site
- Mobile Retardant Base
- Helispot
- Hellbase
- Sling Site
- Unimproved Landing Area
- Division Break
- Branch Break
- Incident Command Post
- Drop Point
- Camp
- Staging Area
- Mobile Weather Unit
- Internet Access
- Repeater
- Water Source
- Restricted Water Source
- Aviation Routes
- Summits & Gaps
- Temporary Flight Restriction
- Fire Edge
- Contained Line
- Wildfire Daily Fire Perimeter
- Lake Tahoe Aquatic Invasives No Dip Zone

# AIR OPERATIONS

## Caldor

CA-ENF-24030  
October 6, 2021

California 13th Interagency Incident Management

FOREST SERVICE  
U.S. DEPARTMENT OF AGRICULTURE

AIR OPS  
Caldor  
CA-ENF-24030

0 1.25 2.5 5 Miles  
1:75,000 NAD83 UTM 11N