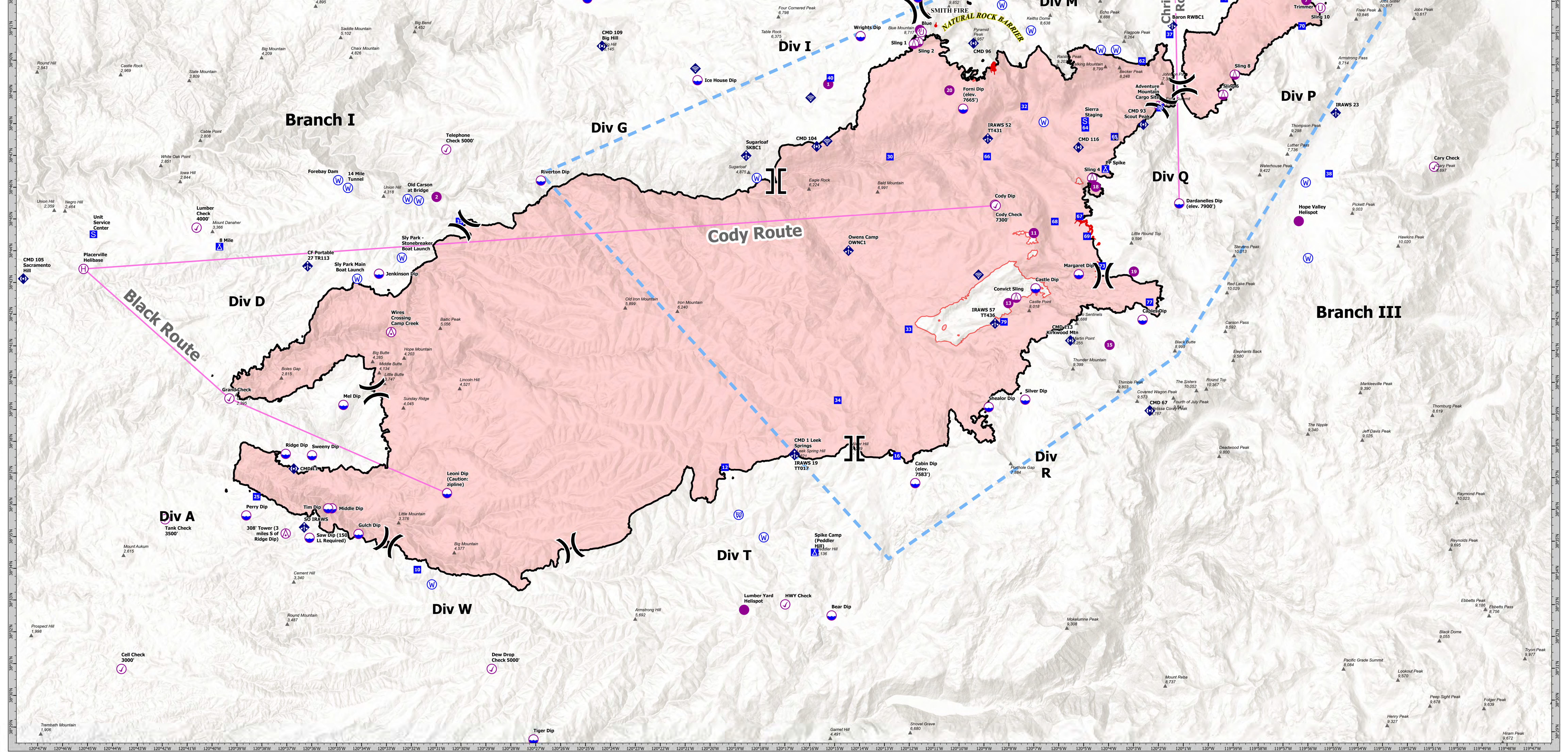


FC Point Type	Label	Latitude WGS84	Longitude WGS84	FC Point Type	Label	Latitude WGS84	Longitude WGS84
Aerial Hazard	308' Tower (3 miles S of Ridge Dip)	38° 35.300' N	120° 32.100' W	Division Break	Div D/F	38° 33.000' N	120° 35.370' W
Check Point	Wire Crossing Camp Creek	38° 41.517' N	120° 32.300' W	Division Break	Div G/H	38° 40.200' N	120° 34.100' W
Dip Site	Div G1	38° 52.556' N	120° 32.280' W	Drop Point	74	38° 52.200' N	120° 34.830' W
Branch Break	Div RT	38° 46.300' N	120° 31.420' W	Drop Point	73	38° 43.800' N	120° 34.250' W
Camp	Sky Camp (Peddler Hill)	38° 37.516' N	120° 34.240' W	Drop Point	65	38° 47.740' N	120° 33.770' W
Camp	PP Spike	38° 46.732' N	120° 34.141' W	Drop Point	64	38° 48.020' N	120° 34.950' W
Check Point	Telephone Check 5000'	38° 41.291' N	120° 30.840' W	Drop Point	63	38° 44.611' N	120° 34.040' W
Check Point	Grand Check	38° 39.400' N	120° 34.400' W	Drop Point	34	38° 39.450' N	120° 34.910' W
Check Point	Tahoe Check 7000'	38° 53.611' N	120° 34.310' W	Drop Point	36	38° 46.600' N	120° 34.340' W
Check Point	Cody Check 3000'	38° 53.611' N	120° 34.310' W	Drop Point	62	38° 50.120' N	120° 34.870' W
Check Point	Lumber Check 4000'	38° 44.770' N	120° 34.770' W	Drop Point	72	38° 55.740' N	120° 34.040' W
Check Point	HWY Check	38° 53.611' N	120° 34.310' W	Drop Point	31	38° 45.020' N	120° 34.170' W
Check Point	Cary Check	38° 46.800' N	120° 35.890' W	Drop Point	10	38° 34.040' N	120° 31.760' W
Check Point	Deep Drop Check 5000'	38° 35.300' N	120° 35.300' W	Drop Point	35	38° 52.600' N	120° 35.330' W
Check Point	Peak Check 9500'	38° 55.000' N	120° 34.850' W	Drop Point	67	38° 45.200' N	120° 35.220' W
Check Point	Peak Check 7000'	38° 55.000' N	120° 34.850' W	Drop Point	75	38° 50.120' N	120° 35.220' W
Dip Site	Quinn Dip	38° 35.300' N	120° 34.170' W	Drop Point	66	38° 41.200' N	120° 34.910' W
Dip Site	Mad Dip	38° 39.200' N	120° 34.810' W	Drop Point	71	38° 53.800' N	120° 35.210' W
Dip Site	Perry Dip	38° 35.200' N	120° 38.690' W	Drop Point	12	38° 37.000' N	120° 35.440' W
Dip Site	Harriet Dip	38° 43.150' N	120° 31.720' W	Drop Point	30	38° 43.200' N	120° 31.820' W
Dip Site	Castle Dip	38° 42.970' N	120° 34.950' W	Drop Point	38	38° 46.500' N	120° 35.130' W
Dip Site	Ridge Dip	38° 37.000' N	120° 31.120' W	Drop Point	33	38° 41.670' N	120° 31.060' W
Dip Site	Blue Dip	38° 43.150' N	120° 31.820' W	Drop Point	70	38° 53.700' N	120° 35.210' W
Dip Site	Union Dip	38° 52.000' N	120° 35.050' W	Drop Point	77	38° 45.500' N	120° 35.020' W
Dip Site	Twin Dip	38° 43.150' N	120° 31.720' W	Drop Point	68	38° 45.020' N	120° 34.180' W
Dip Site	HWY Dip	38° 53.611' N	120° 34.310' W	Drop Point	25	38° 53.200' N	120° 34.270' W
Dip Site	Saw Dip (150 LL Required)	38° 35.300' N	120° 34.141' W	Drop Point	76	38° 52.000' N	120° 35.350' W
Dip Site	Head Dip	38° 35.300' N	120° 35.250' W	Drop Point	32	38° 53.700' N	120° 35.210' W
Dip Site	Front Dip (elev. 7600')	38° 48.400' N	120° 35.880' W	Drop Point	60	38° 41.400' N	120° 34.310' W
Dip Site	Sweeney Dip	38° 37.000' N	120° 35.050' W	Drop Point	11	38° 49.720' N	120° 35.020' W
Dip Site	Silver Dip	38° 39.400' N	120° 35.890' W	Drop Point	3	38° 53.100' N	120° 34.870' W
Dip Site	Outstanding Dip (elev. 7900')	38° 45.050' N	120° 34.170' W	Drop Point	7	38° 52.600' N	120° 35.040' W
Dip Site	Cody Dip	38° 45.050' N	120° 34.170' W	Drop Point	18	38° 52.600' N	120° 35.040' W
Dip Site	Jenkinson Dip	38° 43.150' N	120° 31.410' W	Drop Point	13	38° 42.500' N	120° 34.060' W
Dip Site	Cabin Dip (elev. 7583')	38° 35.300' N	120° 31.120' W	Drop Point	2	38° 40.100' N	120° 31.100' W
Dip Site	Rear Dip	38° 32.000' N	120° 31.130' W	Drop Point	15	38° 40.800' N	120° 31.350' W
Dip Site	Capita Dip	38° 41.291' N	120° 35.840' W	Drop Point	14	38° 52.000' N	120° 35.220' W
Dip Site	Revered Dip	38° 46.300' N	120° 34.950' W	Drop Point	16	38° 46.300' N	120° 34.950' W
Dip Site	Shoal Dip	38° 39.200' N	120° 36.030' W	Drop Point	20	38° 40.100' N	120° 31.350' W
Dip Site	Leoni Dip (Caution: zipline)	38° 36.400' N	120° 36.030' W	Drop Point	19	38° 43.500' N	120° 34.990' W
Dip Site	Saw Dip (150 LL Required)	38° 35.300' N	120° 34.141' W	Drop Point	28	38° 40.100' N	120° 31.350' W
Division Break	Div I/M	38° 51.700' N	120° 31.760' W	Drop Point	17	38° 41.670' N	120° 31.060' W
Division Break	Div P/Q	38° 49.300' N	120° 31.000' W	Drop Point	21	38° 40.100' N	120° 31.350' W
Division Break	Div R	38° 49.300' N	120° 31.000' W	Drop Point	22	38° 40.100' N	120° 31.350' W
Division Break	Div W	38° 49.300' N	120° 31.000' W	Drop Point	23	38° 40.100' N	120° 31.350' W
Division Break	Div Q/R	38° 43.370' N	120° 34.240' W	Drop Point	24	38° 43.370' N	120° 34.240' W
Division Break	Div W/A	38° 34.800' N	120° 31.970' W	Drop Point	26	38° 47.740' N	120° 33.770' W



- ⊗ Aerial Hazard
- ⊙ Check Point
- ⊙ Dip Site
- ⊙ Helispot
- ⊙ Helibase
- ⊙ Sling Site
- ⊙ Unimproved Landing Area
- ⊙ Division Break
- ⊙ Branch Break
- ⊙ Incident Command Post
- ⊙ Drop Point
- ⊙ Camp
- ⊙ Staging Area
- ⊙ Lookout
- ⊙ Mobile Weather Unit
- ⊙ Internet Access
- ⊙ Repeater
- ⊙ Water Source
- ⊙ Restricted Water Source
- Aviation Routes
- ▲ Summits & Gaps
- Temporary Flight Restriction
- Fire Edge
- Contained Line
- Wildfire Daily Fire Perimeter
- Lake Tahoe Aquatic Invasives No Dip Zone

AIR OPERATIONS

Caldor

CA-ENF-24030
October 9, 2021



Interagency Incident Management





AIR OPS

Caldor

October 9, 2021
CA-ENF-24030

Prepared by: CALM113 10/8/2021 20:22