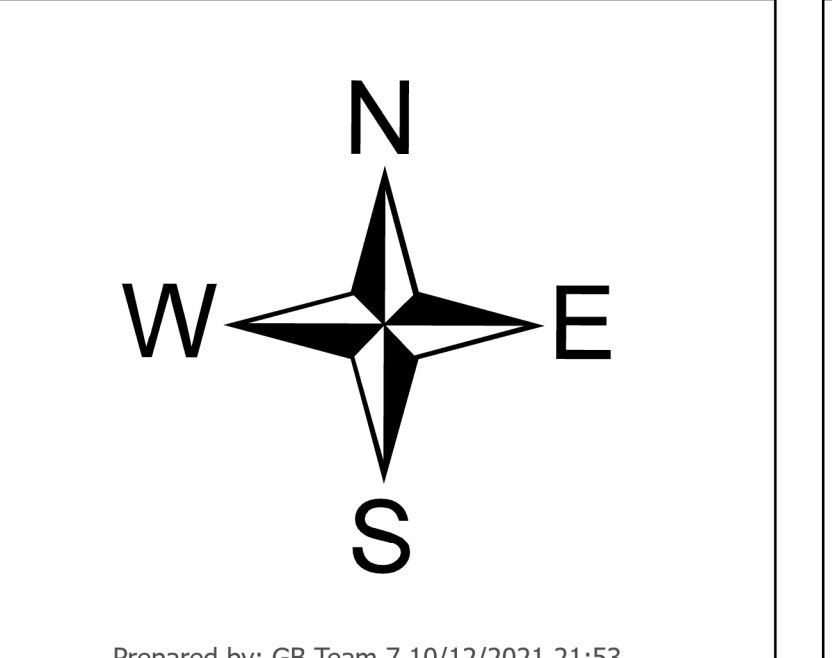
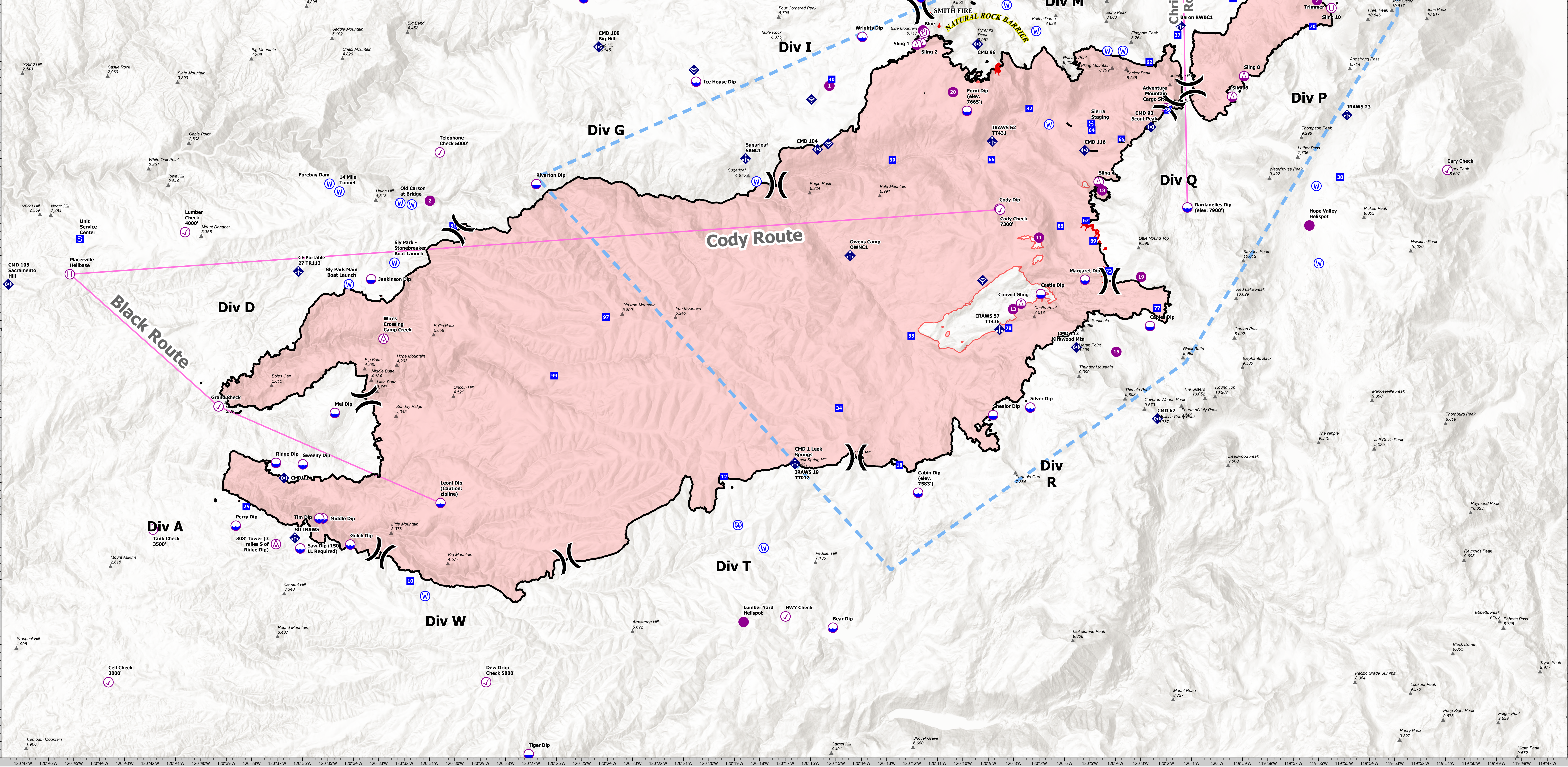


FC Point Type	Label	Latitude WGS84	Longitude WGS84	FC Point Type	Label	Latitude WGS84	Longitude WGS84
Aerial Hazard	308' Tower (3 miles S of Ridge Dip)	38° 53.333' N	120° 52.000' W	Drop Point	75	38° 53.333' N	120° 52.000' W
Aerial Hazard	Wire Crossing Camp Creek	38° 42.522' N	120° 52.900' W	Drop Point	65	38° 42.522' N	120° 52.900' W
Check Point	Telephone Check 5000'	38° 52.522' N	120° 52.288' W	Drop Point	40	38° 52.522' N	120° 52.288' W
Check Point	Grand Check	38° 39.400' N	120° 52.722' W	Drop Point	64	38° 39.400' N	120° 52.722' W
Check Point	Tahoe Check	38° 39.400' N	120° 52.722' W	Drop Point	69	38° 39.400' N	120° 52.722' W
Check Point	Medusa Check 7000'	38° 53.811' N	120° 54.311' W	Drop Point	36	38° 53.811' N	120° 54.311' W
Check Point	Cut Check 3000'	38° 33.888' N	120° 53.666' W	Drop Point	32	38° 33.888' N	120° 53.666' W
Check Point	Lumber Check 4000'	38° 44.777' N	120° 52.777' W	Drop Point	62	38° 44.777' N	120° 52.777' W
Check Point	HWY Check	38° 33.000' N	120° 52.000' W	Drop Point	72	38° 33.000' N	120° 52.000' W
Check Point	Cary Check	38° 46.222' N	120° 53.888' W	Drop Point	31	38° 46.222' N	120° 53.888' W
Check Point	Dark Drop Check 5000'	38° 30.588' N	120° 52.722' W	Drop Point	70	38° 30.588' N	120° 52.722' W
Check Point	Tank Check 3500'	38° 34.588' N	120° 53.288' W	Drop Point	60	38° 34.588' N	120° 53.288' W
Check Point	Peak Check 9500'	38° 56.000' N	120° 53.822' W	Drop Point	16	38° 56.000' N	120° 53.822' W
Check Point	Gold Check 7000'	38° 45.222' N	120° 53.222' W	Drop Point	67	38° 45.222' N	120° 53.222' W
Check Point	Gulch Dip	38° 35.100' N	120° 54.175' W	Drop Point	79	38° 35.100' N	120° 54.175' W
Dip Site	Mel Dip	38° 39.222' N	120° 54.811' W	Drop Point	26	38° 39.222' N	120° 54.811' W
Dip Site	Margaret Dip	38° 43.415' N	120° 52.215' W	Drop Point	71	38° 43.415' N	120° 52.215' W
Dip Site	Perry Dip	38° 43.000' N	120° 53.666' W	Drop Point	66	38° 43.000' N	120° 53.666' W
Dip Site	Ridge Dip	38° 37.666' N	120° 53.333' W	Drop Point	30	38° 37.666' N	120° 53.333' W
Dip Site	Saw Dip	38° 52.000' N	120° 51.175' W	Drop Point	38	38° 52.000' N	120° 51.175' W
Dip Site	Union Dip	38° 52.000' N	120° 51.175' W	Drop Point	33	38° 52.000' N	120° 51.175' W
Dip Site	Wiggins Dip	38° 52.000' N	120° 51.175' W	Drop Point	37	38° 52.000' N	120° 51.175' W
Dip Site	Tim Dip	38° 52.000' N	120° 51.175' W	Drop Point	25	38° 52.000' N	120° 51.175' W
Dip Site	Middle Dip	38° 52.000' N	120° 51.175' W	Drop Point	25	38° 52.000' N	120° 51.175' W
Dip Site	Front Dip (elev. 7665')	38° 37.666' N	120° 53.333' W	Drop Point	99	38° 37.666' N	120° 53.333' W
Dip Site	Sweeny Dip	38° 37.666' N	120° 53.333' W	Drop Point	99	38° 37.666' N	120° 53.333' W
Dip Site	Star Dip	38° 39.400' N	120° 52.722' W	Drop Point	97	38° 39.400' N	120° 52.722' W
Dip Site	Dardanelles Dip (elev. 7000')	38° 45.666' N	120° 51.175' W	Helibase	Tahoe Helibase	38° 53.742' N	120° 52.712' W
Dip Site	Cody Dip	38° 45.666' N	120° 51.175' W	Helibase	Phacelia Helibase	38° 44.402' N	120° 52.322' W
Dip Site	Jenkinson Dip	38° 43.777' N	120° 51.175' W	Helibase	Phacelia Helibase	38° 43.777' N	120° 51.175' W
Dip Site	Cabin Dip (elev. 7583')	38° 36.888' N	120° 51.175' W	Helibase	3	38° 51.500' N	120° 51.822' W
Dip Site	Bear Dip	38° 35.900' N	120° 51.175' W	Helibase	7	38° 52.000' N	120° 51.175' W
Dip Site	Castle Dip	38° 32.666' N	120° 51.175' W	Helibase	18	38° 46.175' N	120° 54.525' W
Dip Site	Castle Dip	38° 41.888' N	120° 51.175' W	Helibase	13	38° 42.522' N	120° 51.175' W
Dip Site	Riverton Dip	38° 46.333' N	120° 52.900' W	Helibase	2	38° 46.388' N	120° 51.100' W
Dip Site	Shower Dip	38° 39.222' N	120° 53.811' W	Helibase	15	38° 41.100' N	120° 51.175' W
Dip Site	Leoni Dip (Caution: zipline)	38° 36.666' N	120° 53.811' W	Helibase	15	38° 36.666' N	120° 53.811' W
Dip Site	Joe House Dip	38° 49.500' N	120° 53.811' W	Helibase	01 Dump	38° 52.487' N	120° 53.200' W
Division Break	Div A	38° 49.500' N	120° 53.811' W	Helibase	01 Dump	38° 52.487' N	120° 53.200' W
Division Break	Div B	38° 49.500' N	120° 53.811' W	Helibase	01 Dump	38° 52.487' N	120° 53.200' W
Division Break	Div C	38° 49.500' N	120° 53.811' W	Helibase	01 Dump	38° 52.487' N	120° 53.200' W
Division Break	Div D	38° 49.500' N	120° 53.811' W	Helibase	01 Dump	38° 52.487' N	120° 53.200' W
Division Break	Div E	38° 49.500' N	120° 53.811' W	Helibase	01 Dump	38° 52.487' N	120° 53.200' W
Division Break	Div F	38° 49.500' N	120° 53.811' W	Helibase	01 Dump	38° 52.487' N	120° 53.200' W
Division Break	Div G	38° 49.500' N	120° 53.811' W	Helibase	01 Dump	38° 52.487' N	120° 53.200' W
Division Break	Div H	38° 49.500' N	120° 53.811' W	Helibase	01 Dump	38° 52.487' N	120° 53.200' W
Division Break	Div I	38° 49.500' N	120° 53.811' W	Helibase	01 Dump	38° 52.487' N	120° 53.200' W
Division Break	Div J	38° 49.500' N	120° 53.811' W	Helibase	01 Dump	38° 52.487' N	120° 53.200' W
Division Break	Div K	38° 49.500' N	120° 53.811' W	Helibase	01 Dump	38° 52.487' N	120° 53.200' W
Division Break	Div L	38° 49.500' N	120° 53.811' W	Helibase	01 Dump	38° 52.487' N	120° 53.200' W
Division Break	Div M	38° 49.500' N	120° 53.811' W	Helibase	01 Dump	38° 52.487' N	120° 53.200' W
Division Break	Div N	38° 49.500' N	120° 53.811' W	Helibase	01 Dump	38° 52.487' N	120° 53.200' W
Division Break	Div O	38° 49.500' N	120° 53.811' W	Helibase	01 Dump	38° 52.487' N	120° 53.200' W
Division Break	Div P	38° 49.500' N	120° 53.811' W	Helibase	01 Dump	38° 52.487' N	120° 53.200' W
Division Break	Div Q	38° 49.500' N	120° 53.811' W	Helibase	01 Dump	38° 52.487' N	120° 53.200' W
Division Break	Div R	38° 49.500' N	120° 53.811' W	Helibase	01 Dump	38° 52.487' N	120° 53.200' W
Division Break	Div S	38° 49.500' N	120° 53.811' W	Helibase	01 Dump	38° 52.487' N	120° 53.200' W
Division Break	Div T	38° 49.500' N	120° 53.811' W	Helibase	01 Dump	38° 52.487' N	120° 53.200' W
Division Break	Div U	38° 49.500' N	120° 53.811' W	Helibase	01 Dump	38° 52.487' N	120° 53.200' W
Division Break	Div V	38° 49.500' N	120° 53.811' W	Helibase	01 Dump	38° 52.487' N	120° 53.200' W
Division Break	Div W	38° 49.500' N	120° 53.811' W	Helibase	01 Dump	38° 52.487' N	120° 53.200' W
Division Break	Div X	38° 49.500' N	120° 53.811' W	Helibase	01 Dump	38° 52.487' N	120° 53.200' W
Division Break	Div Y	38° 49.500' N	120° 53.811' W	Helibase	01 Dump	38° 52.487' N	120° 53.200' W
Division Break	Div Z	38° 49.500' N	120° 53.811' W	Helibase	01 Dump	38° 52.487' N	120° 53.200' W
Drop Point	14	38° 52.222' N	120° 51.175' W	Mobile Weather Unit		38° 55.888' N	120° 54.144' W



- Aerial Hazard
- Check Point
- Dip Site
- Helispot
- Helibase
- Sling Site
- Unimproved Landing Area
- Division Break
- Incident Command Post
- Drop Point
- Staging Area
- Lookout
- Mobile Weather Unit
- Internet Access
- Repeater
- Water Source
- Restricted Water Source
- Aviation Routes
- Summits & Gaps
- Temporary Flight Restriction
- Fire Edge
- Contained Line
- Wildfire Daily Fire Perimeter
- Lake Tahoe Aquatic Invasives No Dip Zone

# AIR OPERATIONS

## Caldor

CA-ENF-24030  
October 13, 2021

National Incident Management Team

FOREST SERVICE  
U.S. DEPARTMENT OF AGRICULTURE

### AIR OPS

Caldor  
October 13, 2021  
CA-ENF-24030

0 1.25 2.5 5 Miles  
1:75,000 NAD83 UTM 11N