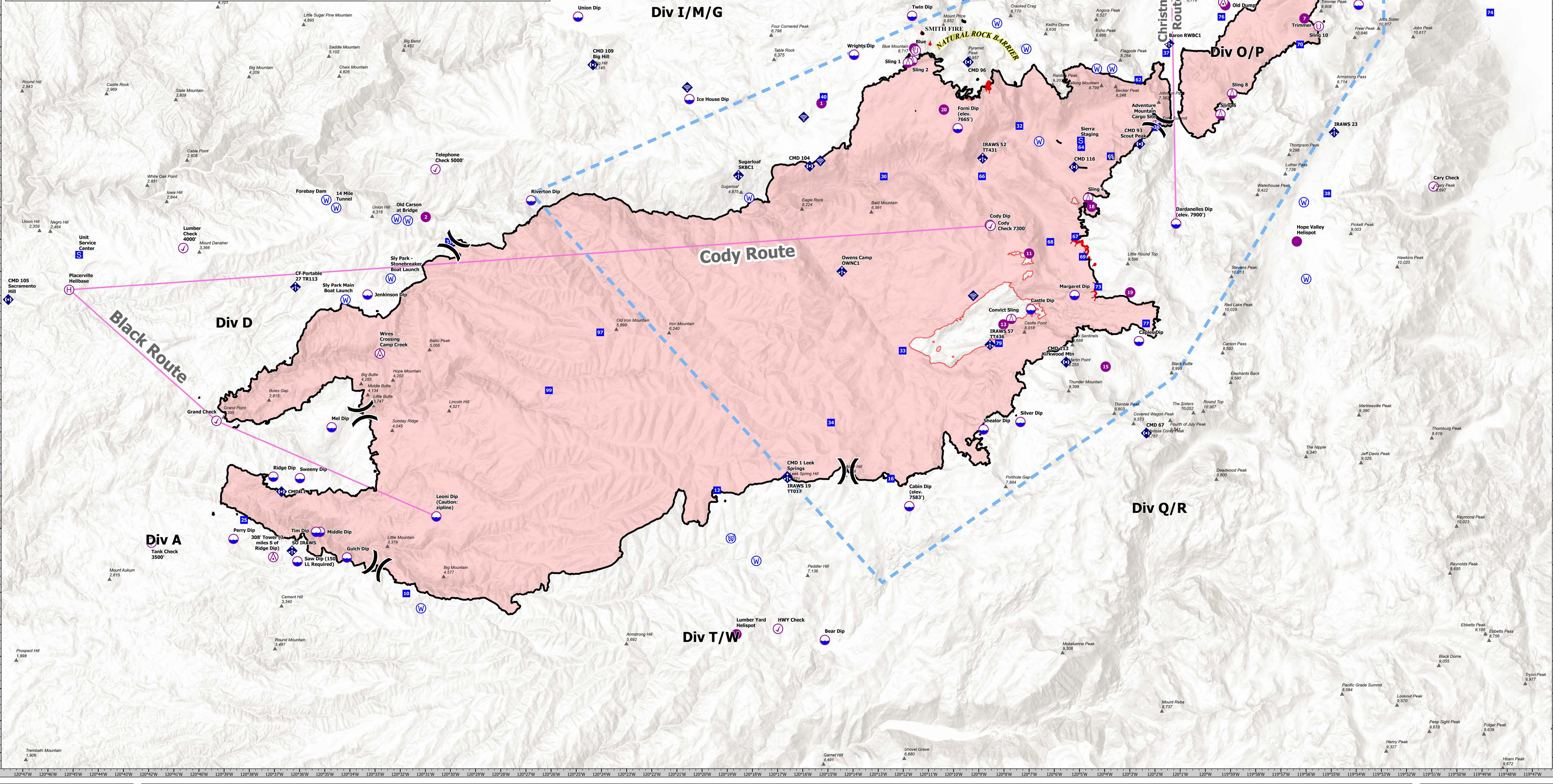


FC Point Type	Label	Latitude WGS84	Longitude WGS84	FC Point Type	Label	Latitude WGS84	Longitude WGS84
Aerial Hazard	308 Tower (3 miles S of Ridge Dip)	39° 35.307' N	120° 37.107' W	Drop Point	36	39° 48.002' N	120° 37.107' W
Aerial Hazard	Wire Crossing Camp Creek	39° 41.527' N	120° 37.107' W	Drop Point	32	39° 46.002' N	120° 37.107' W
Aerial Hazard	Telephone Check 5000	39° 52.557' N	120° 37.107' W	Drop Point	62	39° 50.127' N	120° 37.107' W
Check Point	Grand Check	39° 39.407' N	120° 39.407' W	Drop Point	72	39° 52.727' N	120° 39.407' W
Check Point	Tahoe Check	39° 44.817' N	120° 39.407' W	Drop Point	70	39° 45.817' N	120° 39.407' W
Check Point	Headache Check 7000'	39° 53.817' N	120° 39.407' W	Drop Point	10	39° 54.817' N	120° 39.407' W
Check Point	Lumber Check 4000'	39° 44.787' N	120° 39.407' W	Drop Point	18	39° 51.817' N	120° 39.407' W
Check Point	HWY Check	39° 33.007' N	120° 39.407' W	Drop Point	67	39° 45.817' N	120° 39.407' W
Check Point	Cary Check	39° 46.807' N	120° 39.407' W	Drop Point	79	39° 48.807' N	120° 39.407' W
Check Point	Peak Check 9500'	39° 56.067' N	120° 39.407' W	Drop Point	66	39° 41.027' N	120° 39.407' W
Check Point	Peak Check 7500'	39° 45.567' N	120° 39.407' W	Drop Point	71	39° 53.567' N	120° 39.407' W
Dip Site	Gulch Dip	39° 35.107' N	120° 34.137' W	Drop Point	12	39° 37.137' N	120° 34.137' W
Dip Site	Hed Dip	39° 39.207' N	120° 34.137' W	Drop Point	30	39° 41.207' N	120° 34.137' W
Dip Site	Ferry Dip	39° 35.207' N	120° 34.137' W	Drop Point	38	39° 46.207' N	120° 34.137' W
Dip Site	Paradise Dip	39° 43.407' N	120° 34.137' W	Drop Point	35	39° 45.407' N	120° 34.137' W
Dip Site	Castle Dip	39° 42.077' N	120° 34.137' W	Drop Point	75	39° 42.077' N	120° 34.137' W
Dip Site	Ridge Dip	39° 37.077' N	120° 34.137' W	Drop Point	77	39° 42.077' N	120° 34.137' W
Dip Site	Star Dip	39° 52.307' N	120° 34.137' W	Drop Point	57	39° 50.307' N	120° 34.137' W
Dip Site	Union Dip	39° 52.007' N	120° 34.137' W	Drop Point	68	39° 48.007' N	120° 34.137' W
Dip Site	Tran Dip	39° 52.207' N	120° 34.137' W	Drop Point	25	39° 50.207' N	120° 34.137' W
Dip Site	Wright Dip	39° 50.907' N	120° 34.137' W	Drop Point	76	39° 52.907' N	120° 34.137' W
Dip Site	Wright Dip (150 LL Required)	39° 52.207' N	120° 34.137' W	Drop Point	69	39° 48.207' N	120° 34.137' W
Dip Site	Middle Dip	39° 35.907' N	120° 34.137' W	Drop Point	97	39° 42.207' N	120° 34.137' W
Dip Site	Form Dip (elev. 7665')	39° 48.027' N	120° 34.137' W	Helibase	Tahoe Helibase	39° 53.747' N	120° 34.137' W
Dip Site	Seaside Dip	39° 37.407' N	120° 34.137' W	Helibase	Pineville Helibase	39° 45.947' N	120° 34.137' W
Dip Site	Silver Dip	39° 39.407' N	120° 34.137' W	Helispot	11	39° 47.127' N	120° 34.137' W
Dip Site	Dardanelles Dip (elev. 7900')	39° 45.507' N	120° 34.137' W	Helispot	7	39° 52.247' N	120° 34.137' W
Dip Site	Juniper Dip	39° 42.257' N	120° 34.137' W	Helispot	18	39° 46.127' N	120° 34.137' W
Dip Site	Cable Dip (elev. 7583')	39° 36.407' N	120° 34.137' W	Helispot	13	39° 45.507' N	120° 34.137' W
Dip Site	Tim Dip	39° 39.907' N	120° 34.137' W	Helispot	2	39° 46.747' N	120° 34.137' W
Dip Site	Beer Dip	39° 32.007' N	120° 34.137' W	Helispot	15	39° 41.207' N	120° 34.137' W
Dip Site	Capitol Dip	39° 41.907' N	120° 34.137' W	Helispot	Hope Valley Helispot	39° 45.007' N	120° 34.137' W
Dip Site	Riverton Dip	39° 46.207' N	120° 34.137' W	Helispot	Old Carson at Bridge	39° 52.427' N	120° 34.137' W
Dip Site	Spears Dip	39° 39.207' N	120° 34.137' W	Helispot	Lumber Yard Helispot	39° 38.837' N	120° 34.137' W
Dip Site	Leoni Dip (Caution: zipline)	39° 45.607' N	120° 34.137' W	Helispot	1	39° 50.627' N	120° 34.137' W
Dip Site	Joe Dip	39° 49.907' N	120° 34.137' W	Helispot	19	39° 43.507' N	120° 34.137' W
Division Break	Div D/DM	39° 44.817' N	120° 34.137' W	Internet Access	23	39° 40.207' N	120° 34.137' W
Division Break	Div DM/WR	39° 39.407' N	120° 34.137' W	Internet Access	28	39° 48.207' N	120° 34.137' W
Division Break	Div WIA	39° 48.207' N	120° 34.137' W	Internet Access	31	39° 43.207' N	120° 34.137' W
Drop Point	73	39° 43.077' N	120° 34.137' W	Water Source	7	39° 49.947' N	120° 34.137' W
Drop Point	46	39° 40.207' N	120° 34.137' W	Water Source	14	39° 47.307' N	120° 34.137' W
Drop Point	40	39° 49.587' N	120° 34.137' W	Water Source	3	39° 55.027' N	120° 34.137' W
Drop Point	64	39° 48.027' N	120° 34.137' W	Water Source	38	39° 43.947' N	120° 34.137' W
Drop Point	69	39° 44.617' N	120° 34.137' W	Water Source	39	39° 43.947' N	120° 34.137' W
Drop Point	34	39° 39.407' N	120° 34.137' W	Water Source	41	39° 43.547' N	120° 34.137' W



- ⊙ Aerial Hazard
- ⊙ Check Point
- ⊙ Dip Site
- ⊙ Helispot
- ⊙ Helibase
- ⊙ Sling Site
- ⊙ Unimproved Landing Area
- ⊙ Division Break
- ⊙ Incident Command Post
- Drop Point
- Staging Area
- Lookout
- ◆ Mobile Weather Unit
- ◆ Internet Access
- ◆ Repeater
- ◆ Water Source
- ◆ Restricted Water Source
- Aviation Routes
- ▲ Summits & Gaps
- Temporary Flight Restriction
- Fire Edge
- Contained Line
- Wildfire Daily Fire Perimeter
- ▨ Lake Tahoe Aquatic Invasives No Dip Zone

**AIR OPERATIONS**  
**Caldor**  
 CA-ENF-24030  
 October 14, 2021

**AIR OPS**  
 Caldor  
 October 14, 2021  
 CA-ENF-24030

0 1.25 2.5 5 Miles  
 1:75,000 NAD83 UTM 11N