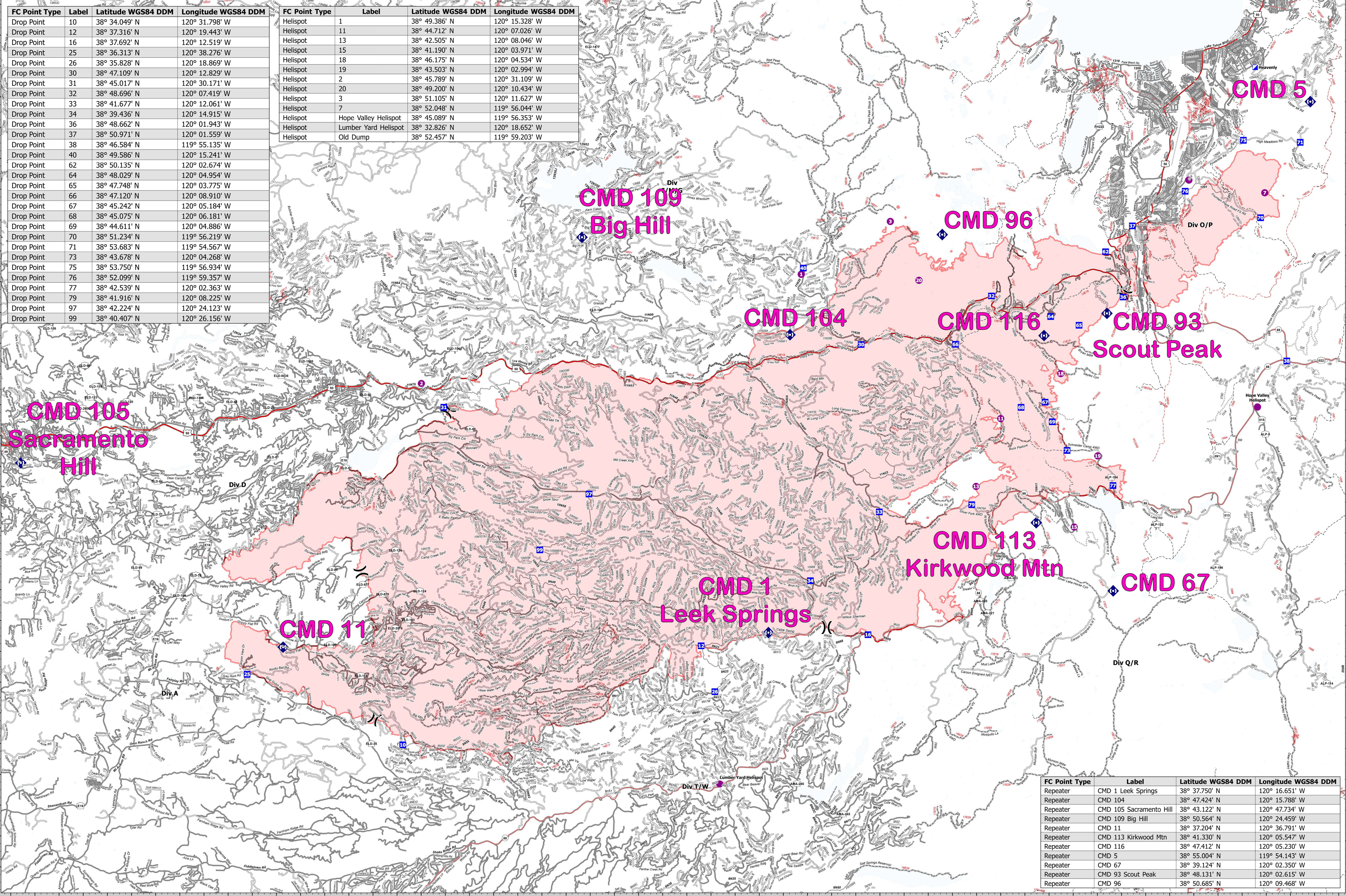


FC Point Type	Label	Latitude WGS84 DDM	Longitude WGS84 DDM
Drop Point	10	38° 34.049' N	120° 31.798' W
Drop Point	12	38° 37.316' N	120° 19.443' W
Drop Point	16	38° 37.692' N	120° 12.519' W
Drop Point	25	38° 36.313' N	120° 38.276' W
Drop Point	26	38° 35.828' N	120° 18.869' W
Drop Point	30	38° 47.109' N	120° 12.829' W
Drop Point	31	38° 45.017' N	120° 30.171' W
Drop Point	32	38° 48.696' N	120° 07.419' W
Drop Point	33	38° 41.677' N	120° 12.061' W
Drop Point	34	38° 39.436' N	120° 14.915' W
Drop Point	36	38° 48.662' N	120° 01.943' W
Drop Point	37	38° 50.971' N	120° 01.559' W
Drop Point	38	38° 46.584' N	119° 55.135' W
Drop Point	40	38° 49.586' N	120° 15.241' W
Drop Point	62	38° 50.135' N	120° 02.674' W
Drop Point	64	38° 48.029' N	120° 04.954' W
Drop Point	65	38° 47.748' N	120° 03.775' W
Drop Point	66	38° 47.120' N	120° 08.910' W
Drop Point	67	38° 45.242' N	120° 05.184' W
Drop Point	68	38° 45.075' N	120° 06.181' W
Drop Point	69	38° 44.611' N	120° 04.886' W
Drop Point	70	38° 51.234' N	119° 56.219' W
Drop Point	71	38° 53.683' N	119° 54.567' W
Drop Point	73	38° 43.678' N	120° 04.268' W
Drop Point	75	38° 53.750' N	119° 56.934' W
Drop Point	76	38° 52.099' N	119° 59.357' W
Drop Point	77	38° 42.539' N	120° 02.363' W
Drop Point	79	38° 41.916' N	120° 08.225' W
Drop Point	97	38° 42.224' N	120° 24.123' W
Drop Point	99	38° 40.407' N	120° 26.156' W

FC Point Type	Label	Latitude WGS84 DDM	Longitude WGS84 DDM
Helispot	1	38° 49.386' N	120° 15.328' W
Helispot	11	38° 44.712' N	120° 07.026' W
Helispot	13	38° 42.505' N	120° 08.046' W
Helispot	15	38° 41.190' N	120° 03.971' W
Helispot	18	38° 46.175' N	120° 04.534' W
Helispot	19	38° 43.503' N	120° 02.994' W
Helispot	2	38° 45.789' N	120° 31.109' W
Helispot	20	38° 49.200' N	120° 10.434' W
Helispot	3	38° 51.105' N	120° 11.627' W
Helispot	7	38° 52.048' N	119° 56.044' W
Helispot	Hope Valley Helispot	38° 45.089' N	119° 56.353' W
Helispot	Lumber Yard Helispot	38° 32.826' N	120° 18.652' W
Helispot	Old Dump	38° 52.457' N	119° 59.203' W



FC Point Type	Label	Latitude WGS84 DDM	Longitude WGS84 DDM
Repeater	CMD 1 Leek Springs	38° 37.750' N	120° 16.651' W
Repeater	CMD 104	38° 47.424' N	120° 15.788' W
Repeater	CMD 105 Sacramento Hill	38° 43.122' N	120° 47.734' W
Repeater	CMD 109 Big Hill	38° 50.564' N	120° 24.459' W
Repeater	CMD 11	38° 37.204' N	120° 36.791' W
Repeater	CMD 113 Kirkwood Mtn	38° 41.330' N	120° 05.547' W
Repeater	CMD 116	38° 47.412' N	120° 05.230' W
Repeater	CMD 5	38° 55.004' N	119° 54.143' W
Repeater	CMD 67	38° 39.124' N	120° 02.350' W
Repeater	CMD 93 Scout Peak	38° 48.131' N	120° 02.615' W
Repeater	CMD 96	38° 50.685' N	120° 09.468' W

COMMS
Caldor
CA-ENF-24030
October 14, 2021

- Repeater
- Drop Point
- Helispot
- Division Break
- Incident Command Post
- Wildfire Daily Fire Perimeter
- Trail
- National Designated Trail
- Primary Highway
- Secondary Highway
- Paved Roads
- Dirt (Not Paved)
- Paved Road
- Gravel Road
- Dirt Roads
- Unimproved Roads
- Closed Roads

COMMUNICATIONS

Caldor
CA-ENF-24030
October 14, 2021



COMMS
Caldor
CA-ENF-24030
October 14, 2021

Prepared by: GB Team 7 10/13/2021 20:16

0 1.25 2.5 5 Miles
1:67,726 NAD83 UTM 11N