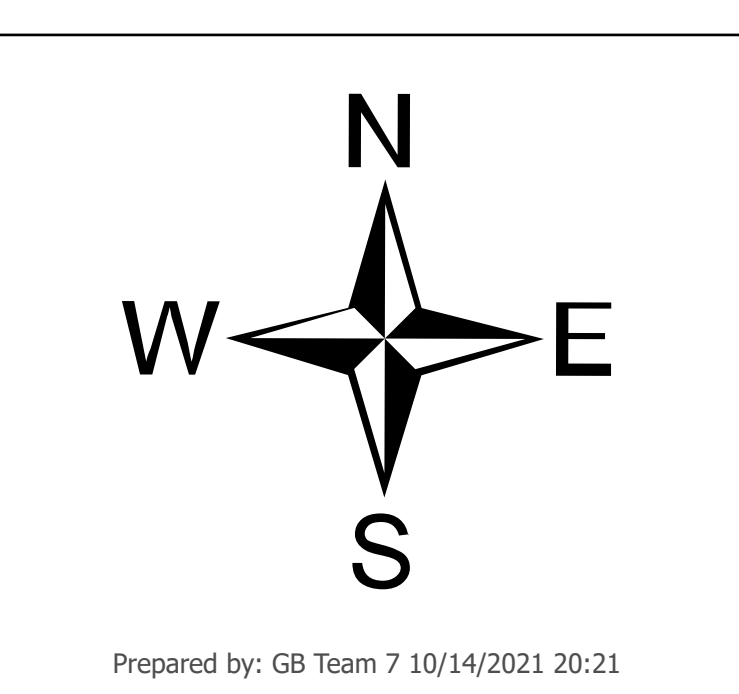
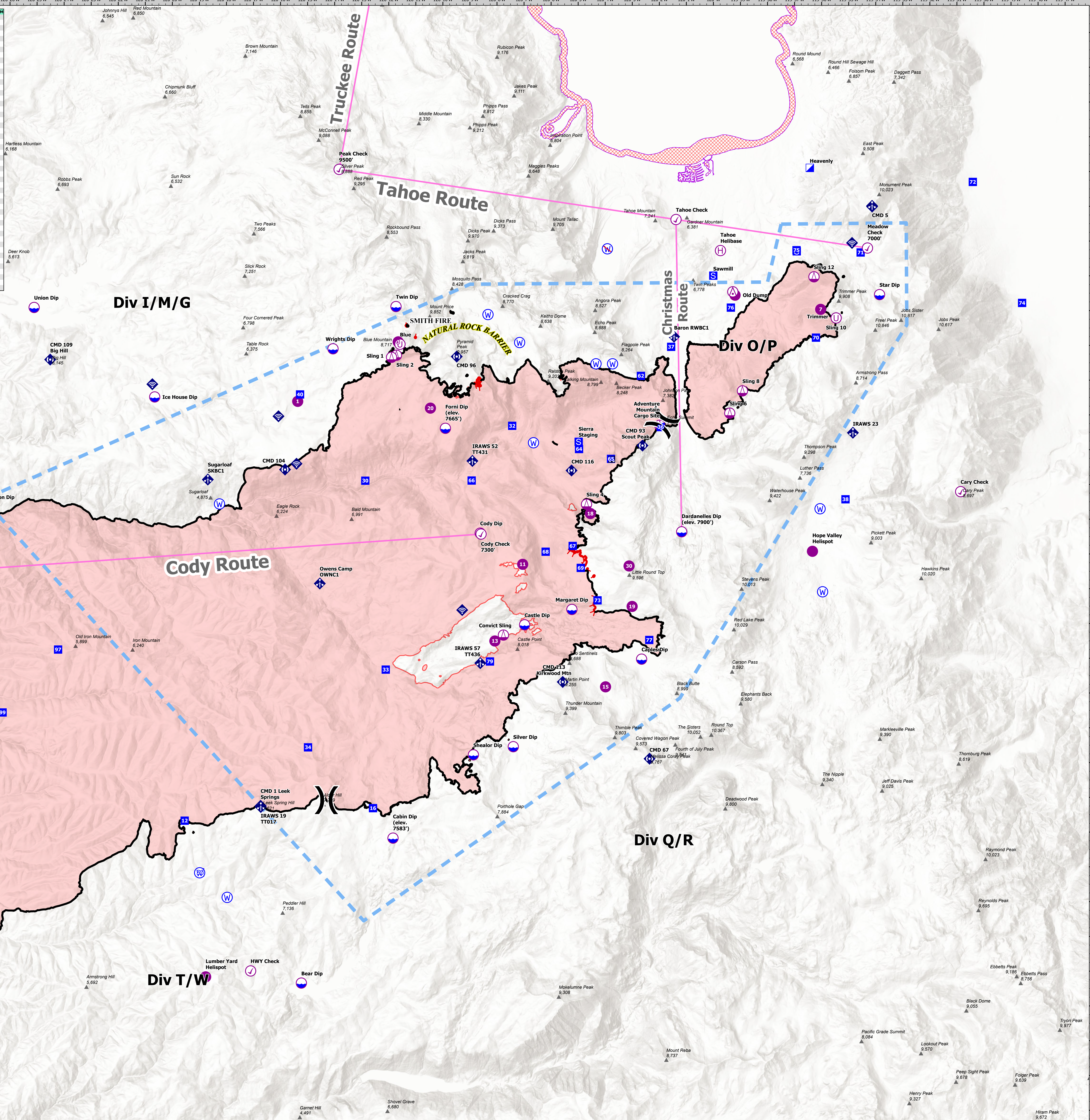


FC Point Type	Label	Latitude	Longitude	FC Point Type	Label	Latitude	Longitude
Aerial Hazard	308' Tower (3 miles S of Ridge Dip)	38° 35.300' N	120° 23.000' W	Drop Point	CMD 109 Big Hill	38° 46.800' N	120° 07.419' W
Check Point	Wire Crossing Camp Creek	38° 41.527' N	120° 35.900' W	Drop Point	62	38° 50.230' N	120° 05.876' W
Drop Point	38° 42.587' N	120° 36.288' W	Drop Point	72	38° 53.780' N	120° 05.420' W	
Drop Point	38° 39.400' N	120° 36.400' W	Drop Point	31	38° 45.037' N	120° 30.171' W	
Drop Point	38° 44.037' N	120° 36.300' W	Drop Point	70	38° 45.200' N	120° 31.210' W	
Drop Point	38° 53.811' N	120° 34.315' W	Drop Point	10	38° 34.580' N	120° 31.796' W	
Drop Point	38° 44.278' N	120° 36.770' W	Drop Point	16	38° 37.020' N	120° 31.510' W	
Drop Point	38° 33.000' N	120° 37.000' W	Drop Point	67	38° 45.482' N	120° 08.184' W	
Drop Point	38° 46.800' N	120° 07.419' W	Drop Point	79	38° 41.930' N	120° 08.225' W	
Drop Point	38° 45.950' N	120° 36.950' W	Drop Point	66	38° 41.100' N	120° 08.510' W	
Drop Point	38° 56.067' N	120° 33.827' W	Drop Point	71	38° 53.880' N	120° 35.600' W	
Drop Site	Hel Dip	38° 35.160' N	120° 34.170' W	Drop Point	12	38° 37.130' N	120° 18.440' W
Drop Site	Hel Dip	38° 39.280' N	120° 36.820' W	Drop Point	30	38° 47.080' N	120° 13.020' W
Drop Site	Hel Dip	38° 35.200' N	120° 38.690' W	Drop Point	38	38° 46.584' N	119° 55.110' W
Drop Site	Hel Dip	38° 43.400' N	120° 06.220' W	Drop Point	35	38° 43.807' N	120° 12.060' W
Drop Site	Cable Dip	38° 37.870' N	120° 31.220' W	Drop Point	77	38° 42.530' N	120° 09.360' W
Drop Site	Hel Dip	38° 45.000' N	120° 31.870' W	Drop Point	37	38° 50.970' N	119° 55.050' W
Drop Site	Hel Dip	38° 52.000' N	120° 25.960' W	Drop Point	68	38° 45.070' N	120° 06.180' W
Drop Site	Hel Dip	38° 53.200' N	120° 31.710' W	Drop Point	25	38° 50.170' N	120° 30.270' W
Drop Site	Hel Dip	38° 50.900' N	120° 14.030' W	Drop Point	76	38° 52.090' N	119° 58.350' W
Drop Site	Hel Dip	38° 53.200' N	120° 31.810' W	Drop Point	69	38° 48.180' N	120° 31.150' W
Drop Site	Hel Dip	38° 35.900' N	120° 35.250' W	Drop Point	97	38° 42.200' N	120° 24.120' W
Drop Site	Form Dip (elev. 7645')	38° 48.620' N	120° 09.880' W	Helibase	Telephone Helibase	38° 53.740' N	119° 59.740' W
Drop Site	Seesaw Dip	38° 37.870' N	120° 31.220' W	Helibase	Pravda Helibase	38° 45.440' N	120° 46.320' W
Drop Site	Silver Dip	38° 45.600' N	120° 07.380' W	Helispot	11	38° 44.710' N	120° 07.020' W
Drop Site	Dandelion Dip (elev. 7900')	38° 45.600' N	120° 08.370' W	Helispot	7	38° 52.040' N	119° 58.040' W
Drop Site	Cody Dip	38° 45.600' N	120° 08.590' W	Helispot	1	38° 46.130' N	120° 04.250' W
Drop Site	Jenken Dip	38° 43.270' N	120° 31.450' W	Helispot	18	38° 46.130' N	120° 04.250' W
Drop Site	Cable Dip (elev. 7583')	38° 36.830' N	120° 11.780' W	Helispot	13	38° 45.500' N	120° 08.040' W
Drop Site	Tim Dip	38° 35.900' N	120° 35.400' W	Helispot	2	38° 45.760' N	120° 31.100' W
Drop Site	Beer Dip	38° 52.000' N	120° 25.960' W	Helispot	15	38° 41.570' N	120° 11.010' W
Drop Site	Spears Dip	38° 45.960' N	120° 04.640' W	Helispot	1	38° 45.960' N	120° 04.640' W
Drop Site	Leoni Dip (Caution: zipline)	38° 46.200' N	120° 36.830' W	Helispot	1	38° 46.200' N	120° 36.830' W
Drop Site	Saw Dip (150' LL Required)	38° 39.280' N	120° 36.830' W	Helispot	1	38° 39.280' N	120° 36.830' W
Drop Site	Ice House Dip	38° 49.500' N	120° 20.600' W	Helispot	19	38° 43.500' N	120° 02.990' W
Division Break	Div A/Div B	38° 44.820' N	120° 36.900' W	Helispot	1	38° 42.300' N	120° 14.490' W
Division Break	Div A/Div C	38° 39.650' N	120° 33.580' W	Helispot	10	38° 44.660' N	120° 03.100' W
Division Break	Div A/Div D	38° 37.010' N	120° 34.230' W	Helispot	3	38° 56.130' N	119° 56.440' W
Division Break	Div A/Div E	38° 34.860' N	120° 34.860' W	Internet Access	27 TR113	38° 53.900' N	119° 54.880' W
Drop Point	73	38° 43.070' N	120° 04.260' W	Internet Access	38	38° 48.800' N	120° 20.680' W
Drop Point	65	38° 42.880' N	120° 03.770' W	Internet Access	65	38° 48.900' N	120° 21.290' W
Drop Point	40	38° 49.580' N	120° 15.240' W	Lookout	4	38° 43.730' N	120° 01.750' W
Drop Point	64	38° 48.020' N	120° 04.890' W	Mobile Weather Unit	OWNS Camp OWNC1	38° 50.080' N	119° 58.140' W
Drop Point	69	38° 44.610' N	120° 08.880' W	Mobile Weather Unit	OWNS 57 TT436	38° 44.860' N	120° 14.910' W
Drop Point	34	38° 39.430' N	120° 14.910' W	Mobile Weather Unit	OWNS 57 TT436	38° 44.860' N	120° 14.910' W



<ul style="list-style-type: none"> <li> Aerial Hazard</li> <li> Check Point</li> <li> Dip Site</li> <li> Helispot</li> <li> Helibase</li> <li> Sling Site</li> <li> Unimproved Landing Area</li> <li> Division Break</li> <li> Incident Command Post</li> </ul>	<ul style="list-style-type: none"> <li> Drop Point</li> <li> Staging Area</li> <li> Lookout</li> <li> Mobile Weather Unit</li> <li> Internet Access</li> <li> Repeater</li> <li> Water Source</li> <li> Restricted Water Source</li> </ul>	<ul style="list-style-type: none"> <li> Aviation Routes</li> <li> Summits &amp; Gaps</li> <li> Temporary Flight Restriction</li> <li> Fire Edge</li> <li> Contained Line</li> <li> Wildfire Daily Fire Perimeter</li> <li> Lake Tahoe Aquatic Invasives No Dip Zone</li> </ul>
---	--	--

# AIR OPERATIONS

## Caldor

CA-ENF-24030  
October 15, 2021

# AIR OPS

Caldor

October 15, 2021

CA-ENF-24030

1:75,000 NAD83 UTM 11N

Prepared by: GB Team 7 10/14/2021 20:21