

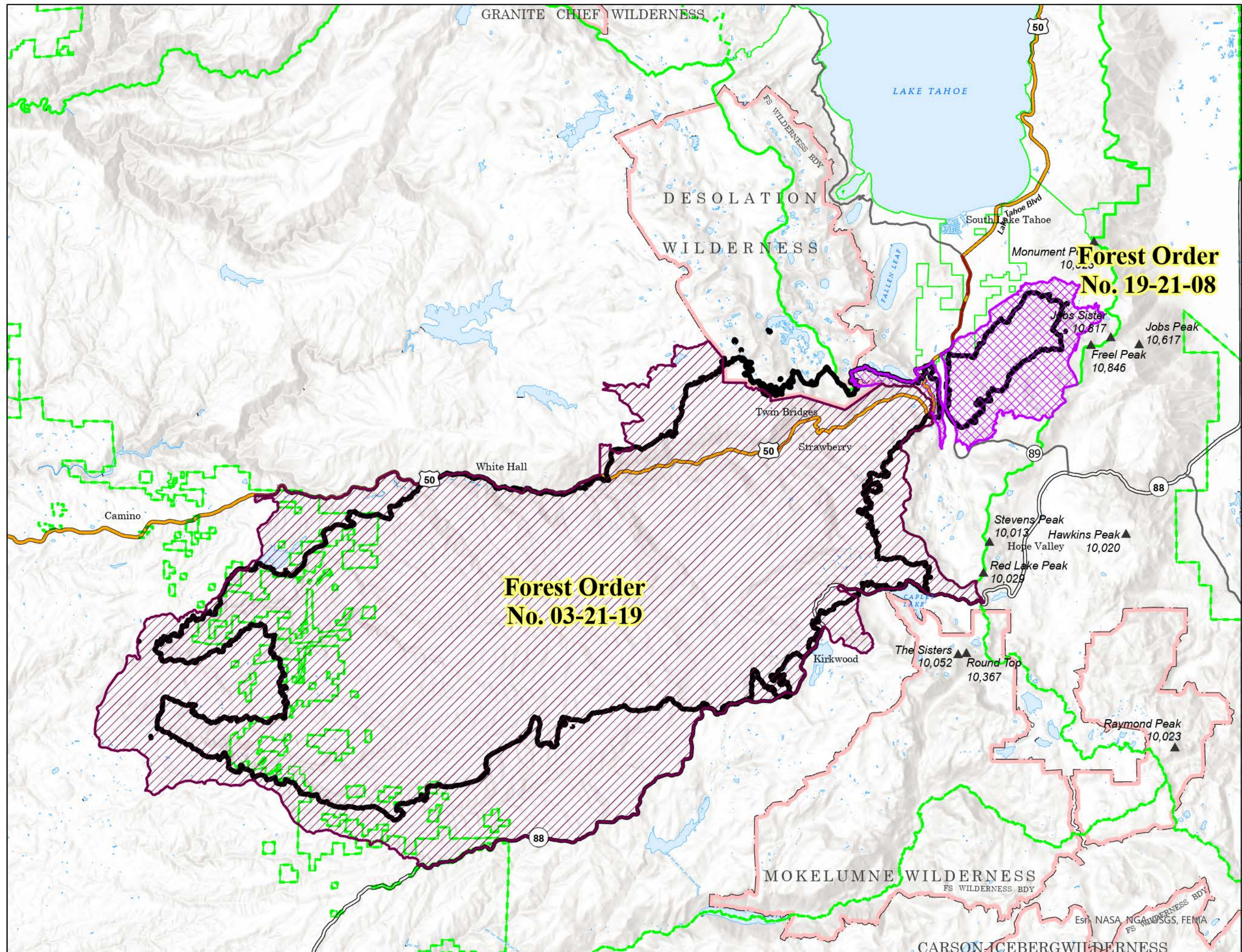
# Forest Closures

Caldor  
CA-ENF-024030

The closure data represented is not the legally signed order and people are subject to citations. Caldor Fire Emergency Closure No. 19-21-08 (TMU), Emergency Forest Closure Order No. 03-21-19 (ENF) for the legally signed order and maps.



- El Dorado National Forest Closure
- Emergency Fire Closure Area
- Contained Line
- Summit
- Primary Highway
- Secondary Highway
- Proclaimed FS Boundary
- Administrative FS Boundary
- Federal Wilderness Boundary



**Forest Order  
No. 19-21-08**

**Forest Order  
No. 03-21-19**

Est. NASA, NGA, USGS, FEMA  
FS