

INCIDENT ACTION PLAN

CALDOR INCIDENT



CA-ENF-024030
P5N8GM21



OPERATIONAL PERIOD





9/29/2021 0700
to
9/30/2021 0700

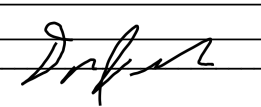


*Interagency Incident
Management*

INCIDENT OBJECTIVES (ICS 202)

1. Incident Name: CALDOR		2. Operational Period:		Date From: 9/29/2021	Date To: 9/30/2021
				Time From: 0700	Time To: 0700
3. Objective(s):					
<u>Leaders Intent:</u> Work effectively with cooperative partners towards a common goal of protecting values in a safe and efficient manner. All incident assigned personnel should be prepared to take appropriate actions regarding: <ul style="list-style-type: none">- Personal safety and safety of others, including driving slowly, safely, and defensively while implementing tactics that offer a high probability of success.- Professional conduct and timely / effective communications.- Manage fatigue by taking breaks and maintaining work rest guidelines.- All line supervision personnel, including crew leaders and strike team leaders, must attend Operational Briefings.					
<u>Management Objectives:</u> <ul style="list-style-type: none">- Provide for emergency personnel and public safety at all times.- Ensure COVID-19 precautions and best practices are met at all times.- Protect property, improvements, and infrastructure.- Ensure accurate coordinated, timely and accurate release of public information.- Foster and maintain relationships with all cooperators and stakeholders.- Protect economic, natural, cultural and heritage resources.- Mitigate or eliminate environmental resource impacts as a result of fire suppression efforts.- Maintain fiscal accountability and keep costs commensurate with values at risk.					
<u>Control Objectives:</u> <ul style="list-style-type: none">- Keep the fire within its currently identified perimeter and north of Highway 4 to Highway 88.- Keep the fire within its currently identified perimeter and south of Wentworth Springs Rd, to Mosquito Pass, and road systems N16A, N20A, N08, and N21.- Keep the fire within its currently identified perimeter and east of County Highway E16 and Fiddletown.- Keep the fire within its currently identified perimeter and west of the El Dorado County, Alpine County and State Line boundary.					
<u>COVID Mitigations:</u> <ul style="list-style-type: none">- All persons must wear a mask indoors at all times regardless of vaccination status, as well as outdoors when physical distancing cannot be maintained.- Maintain a module as one, wash your hands and sanitize surfaces.					
5. Site Safety Plan Required?		No			
Approved Site Safety Plan(s) Located at:					
6. Incident Action Plan					
<input checked="" type="checkbox"/> ICS 203	<input type="checkbox"/> ICS 215A	<input type="checkbox"/> ICS 205 A	<input type="checkbox"/>		
<input checked="" type="checkbox"/> ICS 204	<input checked="" type="checkbox"/> ICS 220	<input checked="" type="checkbox"/> Training Message	<input type="checkbox"/>		
<input checked="" type="checkbox"/> ICS 205	<input checked="" type="checkbox"/> Facility Maps	<input checked="" type="checkbox"/> Travel Map	<input type="checkbox"/>		
<input checked="" type="checkbox"/> ICS 206	<input checked="" type="checkbox"/> Weather Forecast	<input checked="" type="checkbox"/> Demob Plan	<input type="checkbox"/>	County Health Message	
<input checked="" type="checkbox"/> ICS 208	<input checked="" type="checkbox"/> Fire Behavior	<input checked="" type="checkbox"/> Finance Message	<input checked="" type="checkbox"/>	ICS 214	
7. Prepared By:	Daniel Michael	Position/Title:	PSC2	Signature:	
8. Approved by Incident Commander:		Mike Wakoski		Signature:	
ICS 202					

ORGANIZATION ASSIGNMENT LIST (ICS 203)

1. Incident Name: CALDOR		2. Operational Period: Date From: 9/29/2021 Time From: 0700		Date To: 9/30/2021 Time To: 0700	
3. Incident Commander(s) and Command Staff:			7. Operation Section:		
IC	Mike Wakoski	Operations	Matt Ahearn		
Deputy IC		Deputy Ops	Rick Marinelli / Todd McDivitt / Pete Lawrence (T)		
Safety Officer	Kevin Southerland / Jack Wise	Night Operations	Luis Gomez (T)/ Jason WIngard (T)		
Information Officer	Marc Peebles / Jay Nichols				
Liaison Officer	Janine Summy	Branch	I	Jamie Rickard (T)	
		Division/Group	G / T / W	Reggie Brown (T)	
Agency/Organization	Name	Division/Group	Suppression Repair	Brad Stewart	
El Dorado NF - AA	Jeff Marsolais	Division/Group			
El Dorado NF - AA Rep.	Scot Rogers / Jon Regelbrugge	Division/Group			
Lake Tahoe BMU - AA	Gwen Sanchez	Division/Group			
Humboldt Toiyabe NF - AA	Jon Stansfield	Branch	III	TBD	
Cal Fire Arep	Mike Blankenheim	Division/Group	I / M	Travis Bills / Aaron Roggenkamp (T)	
Cal OES	Kit Bailey	Division/Group	O / P	Shane Glaze / Elsa Gaule (T)	
El Dorado SO	Deputy Greg Almos	Division/Group	Q	Ron Gregor	
Sierra Pacific Ind.	Tim Tate	Division/Group	R	Garth Crow	
PG&E	Mike Webb	Division/Group	Suppression Repair	Rob Bertolina	
Amador County SO	LT. Jason Navarre	Branch	Night	TBD	
CHP	LT. Rick Hatfield	Division/Group	Night	Jeff Corser (T)	
Cal Trans	Greg Duffy	Division/Group			
AT&T	Kevan Young	Division/Group			
BLM	Jerry Martinez	Division/Group			
Lake Valley Fire	Brad Zlendick	Division/Group			
COVID Advisor	Greg Flory / Kayla Nimmo	Branch			
Lead READ	Dan Smith/ Emma Williams	Division/Group			
5. Planning Section:		Division/Group			
Chief	Daniel Michael	Division/Group			
Deputy	Phillip Dye (T)	Division/Group			
Resource Unit	Jeremy Owens	Division/Group			
Situation Unit	Mark Campbell/Quang Leba (T)	Branch			
Documentation Unit	Dylan Dabasinskas	Division/Group			
SCKN	Anthony Rivas/ Matt Begines (T)	Division/Group			
FBAN	Lauren Blake	Division/Group			
IMET	Patrick Gilchrist / Shawn Palmquist (T)	Division/Group			
Human Resources	Janine Summy	Division/Group			
Training Specialist	Morgan Madruga (T)	Air Operations Branch		Director:	Lyndsay Alarcon
ITSS	Rick Osuna	Air Support Group Supervisor		Randy Carter/Heather Wonenberg (T)	
		Air Tactical Group Supervisor		Todd White	
6. Logistics Section		Helibase Manager		Cammie Roy	
Chief	Jack Van Lear / Bryan Scott (T)				
Supply Unit	Dave Reynolds/ Bradley Walker (T)	8. Finance/Administration Section:			
Facilities Unit	Matt Ambrose	Chief	Vicki Wilson / Stephen Greene (T)		
Food Unit	Prawitt Hess	Time Unit	Jessica Luna		
Communications Unit	Terry Brinson	Cost Unit	Vera Westmoland/ Christie Camacho		
Medical Unit	Kevin Palm	Comp/Claims Unit	Janna Masi		
BCMG	Javier Parra	EQTR	Michelle Bletcher		
Security	Brian Willbond				
Prepared By: Name:	Daniel Michael	Position/Title:	PSC2	Signature:	
ICS 203		Date/Time:	9/28/2021 2300 hours		



INCIDENT WEATHER FORECAST



FORECAST NO: 42
PREDICTION FOR: 24 Hour Shift
SHIFT DATE: 09/29/21
FORECAST ISSUED: 09/28/21 1900

NAME OF FIRE: Caldor
UNIT: USFS Eldorado NF
SIGNED: Patrick Gilchrist/Shawn Palmquist (T)
Incident Meteorologist

WEATHER DISCUSSION:

Upper ridging building back over the region will bring generally light easterly winds over the fire through Thursday. Temperatures will moderate with low RH expected. Overnight humidity recoveries will be poor to moderate with thermal belts in place. Valleys east of the crest will be cold once again tonight, with temperatures down into the middle to upper 20s.

.TODAY...

Sky/weather.....Mostly sunny.
Max temperature.....56 to 64 above 5000 feet and 64 to 74 below 5000 feet.
Min humidity.....15 to 25% above 5000 feet and 9 to 15% below 5000 feet.
Wind (20 ft).....
 Slope/Valley.....East-northeast 6-12 mph.
 Ridgetop.....East-northeast 8-16 mph.
Mixing height... increasing to 10000 ft MSL mid-afternoon.

.TONIGHT...

Sky/weather.....Mostly clear.
Min temperature.....46 to 56 midslopes and western valleys. 36 to 46 ridgetops and valleys. (Middle to upper 20s valleys east of the crest.)
Max humidity.....25 to 35% midslope to ridgetop. 55 to 65% valleys.
Wind (20 ft).....
 Slope/valley.....Downslope/downvalley 2-5 mph, except north-northeast 5 to 10 mph western valleys.
 Gusts to 10 mph in tighter canyons.
 Ridgetop.....East-northeast 10-16 mph.

.THURSDAY...

Sky/weather.....Mostly sunny.
Max temperature.....60 to 70 above 5000 feet and 70 to 80 below 5000 feet.
Min humidity.....15 to 25% above 5000 feet and 9 to 15% below 5000 feet.
Wind (20 ft).....
 Slope/Valley.....East-northeast 6-12 mph.
 Ridgetop.....East-northeast 8-14 mph.
Mixing height... increasing to 10000 ft MSL mid-afternoon.

Incident Weather Station Data – SCAN Code with Smart Phone
Branch I

Branch III



FIRE BEHAVIOR FORECAST

FORECAST NUMBER: 13	TYPE OF FIRE: Wildland
FIRE NAME: Caldor	OPERATIONAL PERIOD: September 29 th 24 hour
DATE ISSUED: September 28, 2021	TIME ISSUED: 1900 Hours
UNIT: CA Eldorado National Forest/Lake Tahoe Basin Management Unit	SIGNED: Lauren Blake/ FBAN(t) 909-573-6065 Robert Scott FBAN

INPUTS

WEATHER SUMMARY: ...See detailed Fire Weather Forecast in IAP

FUELS:

Needle and leaves from dry and underburned trees are creating a fresh fuel bed. Fire will move easily through these fuels, often undetected, until reaching heavy fuels. The Eldorado National Forest is classified as "Extreme to Exceptional" drought, with Energy Release Components dropped briefly after the recent moisture but expected to near the 90th percentile very quickly due to return to low relative humidity's. Heavy dead and down fuels will likely burn completely, holding heat and actively consuming through all hours of the day. Fine dead fuel moisture is calculated at 6% or less.

OUTPUT

GENERAL:

- Atmospheric moisture has reduced available fuels. Spotting distances and spread rates will also be reduced. Surface fire in fine fuels will still be possible but transition to group torching will be confined to full sun locations and warmer slopes.
- Probability of Ignition = ~ 55%

Fuels and Wx inputs: Temp:74 deg., RH: 9-25% Winds 1Hr-6, 10hr-7, 100hr-8

SPECIFIC:

Branch 1- Fire continues to consume interior fuels. Green islands could produce isolated group torching during the afternoon hours.

Branch 3: Light easterly winds will be favorable but could energize interior heat where exposed and push into green islands that were not a threat previously.

Divisions India and Mike: Pockets of heat well interior could produce fire movement to green islands as fire finds fresh fuels to move through. Repopulation of Highway 50 corridor will continue to bring an increase in service calls; potential for reburn remains in the green islands and heavy fuel concentrations.

Division Quebec and Romeo: Stringers of fuels in mostly rocky terrain will continue to consume.

Divisions Oscar and Papa: Burn down of heavy fuels continues along the ridges of Papa.

Nightshift: Expect very cold conditions tonight. Low laying areas, especially on the east side of the crest will experience temperatures below freezing. Secure sensitive equipment that will be exposed throughout the night.

AIR OPERATIONS: Conditions will be favorable for aviation operations.

SAFETY

Change in wind direction, even light winds, can breath life into hidden heat into available fuels that have not been challenged in a while.

Fire and COVID-19 Briefing Checklist

1. Incident Name:

CALDOR

2. Operational Period: Date From:

9/29/2021

Date To:

9/30/2021

Time From:

0700

Time To:

0700

FIRE and COVID-19 Briefing Checklist

Self-Awareness / Screening

- Immediately separate yourself from others.
 - o Cough more than expected
 - o Shortness of breath or difficulty breathing
 - o New loss of taste or smell
 - o Fever o Sore throat
 - o Chills o Muscle pain
- Review and follow crew and division plans to isolate, triage, and transport symptomatic personnel.

Hygiene on the Fireline

- Properly wash or sanitize your hands often, especially before and after eating or entering a public place, and after coughing or sneezing.
- Avoid handshakes and communal use items.
- Maintain a supply of hand sanitizer and hand wipes. Inform supervisor of needed resupply.
- Disinfect high touch surfaces often:
 - o Radios, phones, doors, pumps, fuel cans, etc.

Social Distancing and Protective Equipment

- Initiate, practice, and remind others of social distancing.
- Conduct briefings and conversations outdoors and at least 6 feet apart.
- Utilize face coverings as a tool when practical.
- Clean or replace dirty face coverings, equipment, and PPE.

Communications

- Face coverings and social distancing complicate communications.
 - o Ensure effectiveness sender/receiver messaging.

Protect yourself, your crew, and your camp!

Find more information: <https://www.nwccg.gov/coronavirus>.

NFES 002646 (06/2020)

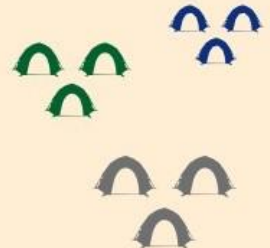
Prevention and Management of COVID-19 During Wildland Fire Operations

Keep yourself and your peers safe by practicing these measures whenever possible

Practice Social/Physical Distancing



- Do not gather in groups or shake hands.
- Hold necessary meetings outside and maintain a social distance of 6 feet.
- Use radios, remote units, and virtual technology for communications as much as possible.
- Establish smaller spike camps to insulate crews/modules from each other and outside personnel and resources (Module as One).
- Keep newly onboarded crewmembers separate for 2 weeks.
- Create separate spaces in offices and housing and stagger work hours.
- Wear cloth face coverings and practice hand hygiene when riding in vehicles or coming into contact with outside resources, personnel, or the general public.



Clean and Disinfect



- Clean and disinfect shared areas and high touch surfaces in workplaces, vehicles, and housing at regular intervals.
- Use appropriate PPE and follow product label instructions when cleaning and disinfecting.
- Do not share dishes, drinking glasses, cups, eating utensils, towels, or bedding without appropriately sanitizing them.
- Minimize equipment sharing, disinfect equipment, and wash/sanitize hands before and after use.



Maintain a Healthy Workforce



- Monitor your own health and maintain awareness of symptoms.
- Prioritize rest, proper hydration, and nutrition to reduce cumulative fatigue.
- Practice rigorous sanitation and personal hygiene, including covering coughs and sneezes and washing/sanitizing hands.
- Conduct symptom screening, including temperature checks, at duty stations or on incidents.
- Mitigate smoke exposure whenever possible.
- Assign at-risk individuals to duties that reduce their potential for contracting the illness.

98.6 °F



Prevent the Spread of COVID-19



- Separate sick individuals; provide a separate bedroom, bathroom, and essential supplies.
- Sick individuals must wear a face mask or cloth covering over their nose and mouth and maintain a 6-foot distance.
- Seek immediate medical attention if someone develops emergency warning signs for COVID-19.
- Only discontinue isolation after meeting CDC criteria.



Understand Different Face Coverings



- Cloth face coverings over the mouth and nose are not PPE and should be washed with soap and water after each use.
- Disposable face and surgical masks covering the mouth and nose are not PPE and should be discarded after one use.
- N95 filtering facepiece respirators are PPE and have a close facial fit and efficient filtration of airborne particles.



Other Resources

- Centers for Disease Control and Prevention:
<https://www.cdc.gov/coronavirus/2019-ncov/>.
- National Wildfire Coordinating Group:
<https://www.nwcg.gov/committees/emergency-medical-committee/infectious-disease-guidance>.



HEALTH AND SAFETY MESSAGE

SAFETY IS EVERYONE'S RESPONSIBILITY

INCIDENT: CALDOR FIRE

DATE: 9/29-30/2021

TIME: 0700-0700

Major Hazards and Risks: Fire Line Hazards, Hazard Trees, Vehicle Traffic, Personal Hygiene, Strenuous Activities, Bears, and Complacency!

Fire Order of the Day– *Be alert. Keep calm. Think clearly. Act Decisively.*

Watch Out Situation

BEARS!

Don't leave food out

Clean up all debris and trash each operational period

NO TENT CAMPING!

Clean up all debris and trash during each operational period.

Refer to <https://www.fs.usda.gov/visit/know-before-you-go/bears>



- *Maintain situational awareness.*
- *Consider risk vs. gain in every work assignment.*
- *Bring your people home at the end of the shift.*

Risk Management Assessing Hazards:

- Estimate Potential Hazards – Look Up/Down/Around Indicators.
- Identify Tactical Hazards – The Watch Outs!
- As conditions change, what other safety hazards are likely to exist?
- Consider probability versus severity of outcome.

INCIDENT SAFETY ANALYSIS 215a

Caldor Fire / CA-ENF-024030 - Wednesday, September 29, 2021

8. Location	9. Hazard	6. Control or Abatement Action (Engineering, Administrative, PPE, Avoidance, Education, etc)
All	Hazard Trees	<ul style="list-style-type: none"> ~ Follow "Hazard Tree Safety" guidelines, IRPG page 22. ~ Post lookouts, or use a spotter in mop-up areas with personnel. ~ Don't park vehicles or take breaks in high concentrations of hazard trees. ~ Establish trigger points for disengagement during high wind events. ~ Remember that the hazard zone extends a minimum of 2 1/2 tree heights.
All	Driving & Traffic	<ul style="list-style-type: none"> ~ Practice "Defensive Driving" techniques traveling on all roads and city streets. ~ Use spotters & Honk horn to alert personnel when backing. ~ Follow Driving LCES (Lights, Chock blocks, Emergency brake, Seat belts). ~ Always use headlights. ~ Yield to pedestrians and bicycles. ~ Observe posted speed limits. ~ Use the 3 second rule for following distance when driving. ~ Use chock blocks, turn wheels into hill. ~ Avoid distractions (eating, cell phones, radio). ~ Ensure that windshields are kept clean of dust and bugs. ~ Refer to "Smoke and Transportation Safety" IRPG Pg 31 ~ Refer to "Roadside Response Safety" IRPG Pg 26
All	Chain Saw Operations	<ul style="list-style-type: none"> ~ Follow "Hazard Tree Safety" guidelines, IRPG Pg 22 ~ Follow "Procedural Felling Operations" IRPG Pg 85. ~ Look up, Look down, Look around for hazard tree indicators. ~ Only fell and buck trees within your expertise, and training. ~ Do not fall trees during high wind events. ~ Ensure proper use of all required PPE.
All	Communications	<ul style="list-style-type: none"> ~ Maintain communication with aviation resources, and suppression organization. ~ Ensure all know frequency and protocol for contacting resources. ~ Utilize the ICS 205. ~ Utilize human repeaters when working in dead spots.
All	Fireline Hazards	<ul style="list-style-type: none"> ~ Refer to "Fireline Location" considerations, IRPG Pg 84 ~ Do not work directly above or below personnel during firing and mop-up operations. ~ Watch for falling and rolling debris on steep slopes. ~ Alert crew personnel of rolling debris by yelling to affected individuals. ~ Position debris that could roll vertically on slope. ~ Avoid stepping over debris that could roll by walking around object. ~ Avoid radiant heat by wearing appropriate PPE correctly. ~ Use correct tool for task assigned. ~ Flag and isolate all HAZMAT and alert all personnel working in Division. ~ Follow WUI recommendations, IRPG Pg 12.
All	Mop-up & Rehab	<ul style="list-style-type: none"> ~ Do not work above or below personnel during rehab/mop-up operations. ~ Alert crew personnel of rolling debris by yelling to affected individuals. ~ Position debris that could roll vertically on slope. ~ Wear eye protection.
All	Helicopter Operations	<ul style="list-style-type: none"> ~ Ensure positive communication with all air resources. ~ Don't plan on air resources for medical transport or resupply. ~ Follow "Aviation Watch-Out Situations" IRPG Pg 46. ~ Refer to "Directing Bucket or Retardant Drops" IRPG Pg 58 . ~ Refer to "Aircraft Mishap Response Procedure" IRPG Pg 62. ~ Stay clear of all bucket drops when suppression actions are in place and allow 1 minute prior to re-entry. ~ Monitor A-G communications.

INCIDENT SAFETY ANALYSIS 215a

All	Heat Related Illness (HRI)& Dehydration	<ul style="list-style-type: none"> ~ Refer to Heat Related Illness information, IRPG Pg 109 ~ Drink Fluids throughout operational period (6-8 qts/shift). ~ Maintain water/electrolyte ratio of 3 to 1. ~ Carry extra water on line and cache water at drop points. ~ Take Frequent breaks, minimum of 10 minutes every hour. ~ Allow out of area resources time to acclimatize before expecting peak performance. ~ Recognize symptoms of HEAT RELATED ILLNESS which include. <ul style="list-style-type: none"> o Lack of energy o Headaches, dizziness o Lack of rest o No hunger, poor eating habits o Hot skin, and lack of sweating
All	Heavy Equipment Operations	<ul style="list-style-type: none"> ~ Refer to "Working with Heavy Equipment" IRPG Pg 86 ~ Ensure communications are established with operators. ~ Use hand signals if other communications are unavailable. ~ Maintain a 50'-100' exclusion area around equipment and increase it to 1 1/2 times tree height when in timber. ~ Use a spotter when backing. ~ Avoid working below heavy equipment.
All	Personal Hygiene	<ul style="list-style-type: none"> ~ COVID-19 is on the rise. ~ Don't share personal items such as water bottles communication devices and utensils. ~ Wash hands before meals, and after use of rest room facilities.
All	Injury & Medical Emergency	<ul style="list-style-type: none"> ~ COVID-19 is on the rise. ~ Conduct daily COVID screening, report any symptoms to Medical immediately, and isolate those that have been exposed. ~ Assist injured employee appropriate medical care. ~ Use EMT's on Division for initial care. ~ Follow "Emergency Medical Care" IRPG Pgs 105-118 ~ Follow procedures in Medical Plan, ICS 206 ~ Refer to "Planning for Medical Emergencies" IRPG Pg 2
All	Unburned Area/Reburn Potential	<ul style="list-style-type: none"> ~ Monitor weather. ~ Base actions upon observed and predicted fire behavior. ~ LCES Checklist IRPG Pg 7. ~ Refer to "Look Up, Down and Around" IRPG Pg 3
All	Indirect Fireline	<ul style="list-style-type: none"> ~ Post lookouts, identify escape routes and safety zones IRPG Pg. 7 ~ Review "Strategy Direct/Indirect Attack" IRPG Pg. 82-83 ~ Refer to "Line Location" IRPG Pg 84
All	Downhill Line Construction	<ul style="list-style-type: none"> ~ Post lookouts and ensure LCES is in place IRPG Pg 7. ~ Follow "Downhill Line Construction" guidelines IRPG Pg 9.
All	Cold Weather	<ul style="list-style-type: none"> ~ Carry extra clothing to prevent hypothermia following shift. ~ Dry out gear each night for next day. ~ Watch footing on frozen ground. ~ Maintain personal hydration. ~ Monitor wind-chill and establish trigger points for disengagement.
All	ATV/UTV use	<ul style="list-style-type: none"> ~ Ensure equipment is inspected and safe to use. ~ Restrict UTV's to max width of 50" on ATV trails due to width and severe out sloped conditions. ~ Ensure operator is trained and certified to operate. ~ Ensure operator has proper PPE according to the Redbook and/or operator's agency requirements. ~ Question if it is mission critical.
All	Night Operations	<ul style="list-style-type: none"> ~ Maintain high visibility in work area and wear vest while in roadway. ~ Use glow sticks to mark hazards. ~ Ensure personnel have a personal light (headlamp). ~ Watch for signs of fatigue. ~ Take breaks away from areas of known hazard.

INCIDENT SAFETY ANALYSIS 215a

All	Power Utilities	<ul style="list-style-type: none"> ~ Refer to the IRPG page 24 for Power Line Safety. ~ Notify all personnel of down electrical lines. ~ Always treat downed wires as energized. ~ Identify and avoid high tension transmission lines. ~ Identify and avoid high pressure natural gas lines. ~ Identify and avoid damaged gas service near structures. ~ Be aware of utility restoration in your work area.
All	Steep Terrain & Rolling Debris	<ul style="list-style-type: none"> ~ Maintain 8'-10' spacing when working & walking. ~ Don't work above any personnel. ~ Be on the lookout for rolling rocks, debris, or burning material. ~ Evaluate necessity to send personnel in areas with limited access. ~ Post lookouts IRPG Pg 7
All	Unplanned Public Interaction	<ul style="list-style-type: none"> ~ Be alert to non-fire personnel in areas with suppression personnel. ~ All non-fire personnel will be escorted while on fireline. ~ Post lookouts to in areas with public to avoid conflicts with mission tasks. ~ Ensure sufficient security to restrict access to exclusion area.
All	Wildlife & Livestock	<ul style="list-style-type: none"> ~ Bear Habitat - on the line, in camp, and in town. ~ Refer to: USFS "Be Bear Aware". ~ Watch out for wildlife & livestock inside fire area and along roadways. ~ Clean up all food debris and trash during each operational period.
All	Mid-slope Fireline	<ul style="list-style-type: none"> ~ Refer to "Fireline Location" IRPG Pg 84 ~ Ensure good anchor point. ~ Base actions upon current and predicted fire behavior and weather. ~ Post lookouts, identify escape routes and safety zones IRPG Pg 7
All	Firing Operations & Devices	<ul style="list-style-type: none"> ~ Only personnel trained in the use of each device will be authorized to use firing equipment. ~ Ensure all personnel are aware of firing operation that may affect them. ~ Wear appropriate PPE. ~ Ensure aerial/ground ignition plans have been adequately developed and personnel are briefed.
All	Structure Protection & HAZMAT	<ul style="list-style-type: none"> ~ Review "Wildland Urban Interface Firefighting" considerations, IRPG Pg 12-16 ~ Use "Structure Assessment" checklist, IRPG Pg 13 ~ Refer to "Structure Hazard Marking System" IRPG Pg 41 ~ Follow "HAZMAT Incident Operations" IRPG Pg 36



*Interagency Incident
Management*

ASSIGNMENT LIST (ICS 204 WF)

CONTROLLED UNCLASSIFIED
INFORMATION//BASIC

1. Incident Name:		2. Operational Period:				3. Branch		Division	
CALDOR		Date From: 09/29/21	Date To: 09/30/21	Time From: 0700	Time To: 0700	I		G / T / W	
4. Operations Personnel:						Page 1 of 1			
Operations Section Chief: Matt Ahearn			Night Ops: Luis Gomez (T)/ Jason Wlngard (T)						
Branch Director: Jamie Rickard (T)			Deputy Ops: Rick Marinelli / Todd McDivitt / Pete Lawrence (T)						
Division/Group Supervisor: Reggie Brown (T)			Air Attack: Todd White						
5. Resources Assigned:		** Resources Below in Bold are 12 Hour **							
Resource Identifier	ALS	LWD	Leader	Personnel	Request #	Hours	Reporting Location		
HC2 BLUE MOUNTAIN		10/3	PEREZ	20	C-50061	0700-1900	El Dorado Fair		
*** HC2 PATRICK ENVIRON		10/6	DOMBI	20	C-50071	0700-1900	El Dorado Fair		
HC2 DIAMOND FIRE		10/6	ANDREWS-JORDAN	20	C-50074	0700-1900	El Dorado Fair		
HC2 NORTH PACIFIC		10/8	CISNEROS	20	C-50084	0700-1900	El Dorado Fair		
ENG3 NV-B5331		10/7	ARROYO	4	E-50207	0700-1900	El Dorado Fair		
ENG4 HEART VENTURES 1		9/30	WETZEL	3	E-50193	0700-1900	El Dorado Fair		
ENG6 J3 CONTRACTING		10/3	EASLEY	3	E-50275	0700-1900	El Dorado Fair		
ENG6 WHITEGRASS FIRE		9/30	WHITEGRASS	3	E-50266	0700-1900	El Dorado Fair		
ENG6 GOODING		9/30	MCKINNEY	2	E-50199	0700-1900	El Dorado Fair		
ENG6 COOPER CONTRACTING		10/3	MEDRANO	3	E-50292	0700-1900	El Dorado Fair		
TFLD GHOLSON		10/6	GHOLSON	1	O-50578	0700-1900	El Dorado Fair		
SOFR(T) GREMEL		10/6	GREMEL	1	O-50532	0700-1900	El Dorado Fair		
EMPF DIEM	X	9/30	DIEM	1	O-50312	0700-1900	El Dorado Fair		
EMTF MAKEMSON		9/30	MAKEMSON	1	O-50317	0700-1900	El Dorado Fair		
MEDIC 60	X	10/1	NAVARRO/GOMEZ	2	E-20720	0700-1900	El Dorado Fair		
SOF1 BARNHART		10/12	BARNHART	1	O-50660	0700-1900	El Dorado Fair		
SOFR(T) GREMEL		10/6	GREMEL	1	O-50532	0700-1900	El Dorado Fair		
6. Work Assignments:									
TASK: Secure existing line and provide for tactical patrol within the Hwy 50 corridor. Coordinate with REAFs and mop up to the extent necessary on the fires edge and within the perimeter where infrastructure and values at risk are present									
PURPOSE: Minimize any fire progression and ensure the safety of those working on the west side of Mormon Emigrant Trail									
END STATE: Fires edge in the division is controlled and escape is improbable									
7. Special Instructions:									
Backhaul trash, excess supplies and provide a location for accountable property									
Identify and coordinate the removal of hazard trees									
Resources denoted with * is identified as I/A resources within the TFR. Resources denoted with *** are Lend Lease to the Rubicon Fire									
Resources need to report to El Dorado County Fairgrounds (100 Placerville Dr, Placerville, CA 95667) for briefing									
8. Communications									
Name	Ch	Function	Rx Freq	Rx Tone	Tx Freq	Tx Tone	Notes		
COMMAND SEE ICS 205	1	COMMAND							
NIFC T1	8	TACTICAL	168.0500N		168.0500N				
A/G CMD	12	A/G CMD	167.9500N		167.9500N				
CALCORD	15	COORDINATION	156.0750N	156.7	156.0750N	156.7			
GUARD 16	16	EMERGENCY	168.6250N		168.6250N	110.9			
9. Prepared by: Name:		Jeremy Ownens			RESL		Signature: _____		
ICS 204		Date/Time: 9/28/2021 2200			Personnel Count: 106				

ASSIGNMENT LIST (ICS 204 WF)

CONTROLLED UNCLASSIFIED
INFORMATION/BASIC

1. Incident Name:		2. Operational Period:				3. Branch		Division
CALDOR		Date From: 09/29/21		Date To: 09/30/21		1		Suppression Repair
		Time From: 0700		Time To: 0700				
4. Operations Personnel:								Page 1 of 5
Operations Section Chief: Matt Ahearn				Night Ops: Luis Gomez (T)/ Jason Wingard (T)				
Branch Director: Jamie Rickard (T)				Deputy Ops: Rick Marinelli / Todd McDivitt / Pete Lawrence (T)				
Division/Group Supervisor: Brad Stewart				Air Attack: Todd White				
5. Resources Assigned:		** Resources Below in Bold are 12 Hour **						
Resource Identifier	ALS	LWD	Leader	Personnel	Request #	Hours	Reporting Location	
TFLD LOWELL		9/29	LOWELL	1	O-568	0700-1900	El Dorado Fair	
TFLD WARD		10/11	WARD	1	N/A	0700-1900	El Dorado Fair	
HEQB SMITH		10/3	SMITH	1	O-562	0700-1900	El Dorado Fair	
HEQB GENTIS		10/8	GENTIS	1	O-50583	0700-1900	El Dorado Fair	
HEQB JOHNSON (T)		10/8	JOHNSON	1	O-50501	0700-1900	El Dorado Fair	
HEQB HADEN (T)		10/11	HADEN	1	N/A	0700-1900	El Dorado Fair	
HEQB CELIO (T)		10/11	CELIO	1	N/A	0700-1900	El Dorado Fair	
HEQB MAUTZ (T)		10/11	MAUTZ	1	N/A	0700-1900	El Dorado Fair	
HEQB PELAYO (T)		10/11	PELAYO	1	N/A	0700-1900	El Dorado Fair	
HEQB GRISMER (T)		10/11	GRISMER	1	N/A	0700-1900	El Dorado Fair	
GROUP #1 MET								
WTS1 ASAP		10/2	DIXON	2	E-20015	0700-1900	El Dorado Fair	
PROC PATHFINDER		9/29	FULTON	1	E-730	0700-1900	El Dorado Fair	
SKD SIERRA FOREST 2		9/30	J. WASS	1	E-705	0700-1900	El Dorado Fair	
SKD SIERRA FOREST 3		9/30	DUARTE	1	E-706	0700-1900	El Dorado Fair	
LOAD SIERRA NEVADA 2		9/29	WASS	1	E-50173	0700-1900	El Dorado Fair	
LOAD ROMINE TIMBER 1		10/12	ROMINE	1	E-724	0700-1900	El Dorado Fair	
LOAD HEAVYHAUL		9/29	LESLIE	2	E-50226	0700-1900	El Dorado Fair	
LOG TRK VOLCANO CREEK			ELLIOT	1	E-50156	0700-1900	El Dorado Fair	
LOG TRK ARBORWORKS		10/14	YOUNGREN	1	E-50157	0700-1900	El Dorado Fair	
LOG RIDGE LOGGING		10/15	SLACK	1	E-737	0700-1900	El Dorado Fair	
LOG HEAVYHAUL		9/30	LESLIE	1	E-738	0700-1900	El Dorado Fair	
FEL1 SIERRA NEVADA		10/4	D. WASS	1	E-699	0700-1900	El Dorado Fair	
FEL1 AXSUS 1		10/6	BASNAW	2	E-701	0700-1900	El Dorado Fair	
FMOD REDWOOD EMPIRE		10/2	GONZALEZ	2	O-50342	0700-1900	El Dorado Fair	
6. Work Assignments:								
TASK: Perform priority suppression repair work within Branch 1. Repair contingency line along Peavine Ridge and Granite Springs Rd while continuing Hazard Tree Removal along Mormon Emigrant Trail and Sierra at Tahoe								
PURPOSE: Minimize any near-term environmental resource impacts as a result of fire suppression efforts								
END STATE: Watershed and areas adjacent to values at risk are protected using the approved standard								
7. Special Instructions:								
Backhaul trash, excess supplies and provide a location for accountable property								
Identify and coordinate the removal of hazard trees								
Resources denoted with * is identified as I/A resources within the TFR. Resources denoted with *** are Lend Lease to the Rubicon Fire								
Resources need to report to El Dorado County Fairgrounds (100 Placerville Dr, Placerville, CA 95667) for briefing								
8. Communications								
Name	Ch	Function	Rx Freq	Rx Tone	Tx Freq	Tx Tone	Notes	
COMMAND SEE ICS 205	1	COMMAND						
NIFC T6	9	TACTICAL	166.7750N		166.7750N			
A/G CMD	12	A/G CMD	167.9500N		167.9500N			
CALCORD	15	COORDINATION	156.0750N	156.7	156.0750N	156.7		
GUARD 16	16	EMERGENCY	168.6250N		168.6250N	110.9		
9. Prepared by: Name: Jeremy Owens RESL								
				Signature: _____				
ICS 204		Date/Time: 9/28/2021 2200		Personnel Count: 22				

ASSIGNMENT LIST (ICS 204 WF)

CONTROLLED UNCLASSIFIED
INFORMATION//BASIC

1. Incident Name:		2. Operational Period:				3. Branch		Division	
CALDOR		Date From: 09/29/21	Date To: 09/30/21			I		Suppression Repair	
		Time From: 0700	Time To: 0700			Page 2 of 5			
4. Operations Personnel:									
Operations Section Chief: Matt Ahearn				Night Ops: Luis Gomez (T)/ Jason Wingard (T)					
Branch Director: Jamie Rickard (T)				Deputy Ops: Rick Marinelli / Todd McDivitt / Pete Lawrence (T)					
Division/Group Supervisor: Brad Stewart				Air Attack: Todd White					
5. Resources Assigned:									
** Resources Below in Bold are 12 Hour **									
Resource Identifier	ALS	LWD	Leader	Personnel	Request #	Hours	Reporting Location		
GROUP #2 MET									
SKD SIERRA FOREST 1		9/30	MARTIN	1	E-704	0700-1900	El Dorado Fair		
SKD SIERRA FOREST 5		10/1	MARVIN	1	E-708	0700-1900	El Dorado Fair		
FEL1 AXSUS 2		10/6	AKRE	2	E-716	0700-1900	El Dorado Fair		
LOAD SIERRA NEVADA 1		9/30	LANGLEY	1	E-50172	0700-1900	El Dorado Fair		
LOAD ROMINE TIMBER 2		10/14	ROMINE	1	E-725	0700-1900	El Dorado Fair		
*** FAL1 A&F ENTERPRISES		10/4	BOKISH	1	O-50088	0700-1900	El Dorado Fair		
*** FAL1 MOEN TIMBER FALLING		10/4	MOEN	1	O-50089	0700-1900	El Dorado Fair		
GROUP #3 GRINDING									
GRND ARBORWORKS		10/16	MEALIN	1	E-731	0700-1900	El Dorado Fair		
LOAD BAMFORD 1		10/15	MONTGOMERY	1	E-720	0700-1900	El Dorado Fair		
LOAD SIERRA NEVADA 3		9/29	STANBRIDGE	1	E-50159	0700-1900	El Dorado Fair		
LOAD BAMFORD 3		10/15	MONTGOMERY	1	E-723	0700-1900	El Dorado Fair		
6. Work Assignments:									
TASK: Perform priority suppression repair work within Branch 1. Repair contingency line along Peavine Ridge and Granite Springs Rd while continuing Hazard Tree Removal along Mormon Emigrant Trail and Sierra at Tahoe									
PURPOSE: Minimize any near-term environmental resource impacts as a result of fire suppression efforts									
END STATE: Watershed and areas adjacent to values at risk are protected using the approved standard									
7. Special Instructions:									
Backhaul trash, excess supplies and provide a location for accountable property									
Identify and coordinate the removal of hazard trees									
Resources denoted with * is identified as I/A resources within the TFR. Resources denoted with *** are Lend Lease to the Rubicon Fire									
Resources need to report to El Dorado County Fairgrounds (100 Placerville Dr, Placerville, CA 95667) for briefing									
8. Communications									
Name	Ch	Function	Rx Freq	Rx Tone	Tx Freq	Tx Tone	Notes		
COMMAND SEE ICS 205	1	COMMAND							
NIFC T6	9	TACTICAL	166.7750N		166.7750N				
A/G CMD	12	A/G CMD	167.9500N		167.9500N				
CALCORD	15	COORDINATION	156.0750N	156.7	156.0750N	156.7			
GUARD 16	16	EMERGENCY	168.6250N		168.6250N	110.9			
9. Prepared by: Name:									
Jeremy Ownens				RESL					
Signature: _____									
ICS 204		Date/Time: 9/28/2021 2200				Personnel Count: 12			

ASSIGNMENT LIST (ICS 204 WF)

CONTROLLED UNCLASSIFIED
INFORMATION/BASIC

1. Incident Name: <p style="text-align: center; font-weight: bold;">CALDOR</p>	2. Operational Period: Date From: 09/29/21 Date To: 09/30/21 Time From: 0700 Time To: 0700	3. Branch Division <p style="text-align: center; font-weight: bold; font-size: 1.2em;">I Suppression Repair</p>
4. Operations Personnel:		Page 4 of 5

Operations Section Chief: Matt Ahearn	Night Ops: Luis Gomez (T)/ Jason Wingard (T)
Branch Director: Jamie Rickard (T)	Deputy Ops: Rick Marinelli / Todd McDivitt / Pete Lawrence (T)
Division/Group Supervisor: Brad Stewart	Air Attack: Todd White

5. Resources Assigned:	** Resources Below in Bold are 12 Hour **						
Resource Identifier	ALS	LWD	Leader	Personnel	Request #	Hours	Reporting Location
GROUP #5 (CONTINUING)							
EXCA VENTANA RANCH		10/9	LOVERTON	1	E-689	0700-1900	El Dorado Fair
EXCA EMERSON		10/8	SHERRILL	1	E-50154	0700-1900	El Dorado Fair
EXCA INGRAM		10/8	WHEELER	1	E-50155	0700-1900	El Dorado Fair
EXCA BRUCE YOUNG		10/1	YOUNG	1	E-241	0700-1900	El Dorado Fair
MAST PVT (E-58)		10/7	MARLIN	1	E-58	0700-1900	El Dorado Fair
SKDG DC FIRE		10/8	GANN	2	E-247	0700-1900	El Dorado Fair
FEL1 AXSUS 3		10/9	FERGUSON	2	E-719	0700-1900	El Dorado Fair
REAF FOULK		9/29	FOULK	1	O-181	0700-1900	El Dorado Fair
GROUP #6 KIRKWOOD							
TFLD HUMBACH			HUMBACH	1	O-566	0700-1900	El Dorado Fair
TFLD(T) BERKE			BERKE	1	O-576	0700-1900	El Dorado Fair
CHIP WOOD CHUCK		10/9	TINGLER	1	E-50174	0700-1900	El Dorado Fair
EXCA WEST WOOD		10/9	WEST	2	E-232	0700-1900	El Dorado Fair
EXCA COTTONWOOD		10/15	HARTLEY	2	E-687	0700-1900	El Dorado Fair
EXCA CLAYTON		9/30	TITTLE	2	E-50228	0700-1900	El Dorado Fair

6. Work Assignments:
 TASK: Perform priority suppression repair work within Branch 1. Repair contingency line along Peavine Ridge and Granite Springs Rd while continuing Hazard Tree Removal along Mormon Emigrant Trail and Sierra at Tahoe
 PURPOSE: Minimize any near-term environmental resource impacts as a result of fire suppression efforts
 END STATE: Watershed and areas adjacent to values at risk are protected using the approved standard

7. Special Instructions:
 Backhaul trash, excess supplies and provide a location for accountable property
 Identify and coordinate the removal of hazard trees
 Resources denoted with * is identified as I/A resources within the TFR. **Resources denoted with *** are Lend Lease to the Rubicon Fire**
 Resources need to report to El Dorado County Fairgrounds (100 Placerville Dr, Placerville, CA 95667) for briefing

8. Communications							
Name	Ch	Function	Rx Freq	Rx Tone	Tx Freq	Tx Tone	Notes
COMMAND SEE ICS 205	1	COMMAND					
NIFC T6	9	TACTICAL	166.7750N		166.7750N		
A/G CMD	12	A/G CMD	167.9500N		167.9500N		
CALCORD	15	COORDINATION	156.0750N	156.7	156.0750N	156.7	
GUARD 16	16	EMERGENCY	168.6250N		168.6250N	110.9	

9. Prepared by: Name: Jeremy Ownens RESL
 Signature: _____
ICS 204 Date/Time: 9/28/2021 2200 Personnel Count: 17

ASSIGNMENT LIST (ICS 204 WF)

CONTROLLED UNCLASSIFIED
INFORMATION/BASIC

1. Incident Name:	2. Operational Period:	3. Branch	Division
CALDOR	Date From: 09/29/21 Date To: 09/30/21 Time From: 0700 Time To: 0700	III	I / M
4. Operations Personnel:		Page 1 of 2	

Operations Section Chief: Matt Ahearn	Night Ops: Luis Gomez (T)/ Jason WIngard (T)
Branch Director: TBD	Deputy Ops: Rick Marinelli / Todd McDivitt / Pete Lawrence (T)
Division/Group Supervisor: Travis Bills / Aaron Roggenkamp (T)	Air Attack: Todd White

5. Resources Assigned:	** Resources Below in Bold are 12 Hour **							
Resource Identifier	ALS	LWD	Leader	Personnel	Request #	Hours	Reporting Location	
HC1 PLUMAS IHC		10/5	SHERMAN	18	C-50080	0700-1900	HEAVENLY ICP	
HC1 TALLAC IHC		10/10	BETTY	18	C-50102	0700-1900	HEAVENLY ICP	
*** HC2IA YUKON		10/7	HABERMANN	21	C-50077	0700-1900	HEAVENLY ICP	
HC2 SZ FORESTRY		10/5	FULLERTON	19	C-50068	0700-1900	HEAVENLY ICP	
ENG3 HART 291		10/6	GATES	3	E-291	0700-1900	HEAVENLY ICP	
ENG3 CCD 3363		9/30	WILLIAMS	5	E-50196	0700-1900	HEAVENLY ICP	
ENG3 DS FIRE SUPPRESSION		10/4	DAGNELL	3	E-50161	0700-1900	HEAVENLY ICP	
ENG3 TDOX BR21		10/7	SPRY	4	E-50345	0700-1900	HEAVENLY ICP	
ENG4 DUKE CITY 401		10/3	LAKE	3	E-50276	0700-1900	HEAVENLY ICP	
ENG6 TX-TXF E641		10/11	FOSTER	4	E-466	0700-1900	HEAVENLY ICP	
ENG6 METHOW RIVER 11		10/3	BELL	3	E-50277	0700-1900	HEAVENLY ICP	
ENG6 METAL WORKS		10/3	SOUTHWICK	3	E-50281	0700-1900	HEAVENLY ICP	
ENG6 FLASHOVER		10/2	VINCENT	3	E-50209	0700-1900	HEAVENLY ICP	
WTS2 MARTIN		10/3	MARTIN	1	E-50241	0700-1900	HEAVENLY ICP	
WTS3 RAVEN FIRE LLC		10/2	GADSBY	1	E-50249	0700-1900	HEAVENLY ICP	
WTS3 BUSCHER ENGINES		10/10	BUSCHER	1	E-50289	0700-1900	HEAVENLY ICP	

6. Work Assignments:
 TASK: Secure containment lines south of Lyons Lake. Utilize natural barriers as containment lines and take suppression action on the Smith Fire. Mop up to the extent necessary on the fires edge and provide for tactical patrol, responding to community needs along Hwy 50
 PURPOSE: Minimize any fire progression and ensure the safety of those working north of Hwy 50
 END STATE: Fires edge in the division is controlled and escape is improbable

7. Special Instructions:
 Backhaul trash, excess supplies and provide a location for accountable property
 Identify and coordinate the removal of hazard trees
 Resources denoted with * is identified as I/A resources within the TFR. **Resources denoted with *** are Lend Lease to the Rubicon Fire**
 Resources need to report to Heavenly ICP (3860 Saddle Rd., South Lake Tahoe, CA 96150) for briefing and end of shift

8. Communications							
Name	Ch	Function	Rx Freq	Rx Tone	Tx Freq	Tx Tone	Notes
COMMAND SEE ICS 205	1	COMMAND					
NIFC T1	6	TACTICAL	168.0500N		168.0500N		
A/G CMD	12	A/G CMD	167.9500N		167.9500N		
CALCORD	15	COORDINATION	156.0750N	156.7	156.0750N	156.7	
GUARD 16	16	EMERGENCY	168.6250N		168.6250N	110.9	

9. Prepared by: Name: Jeremy Ownens RESL Signature: _____
ICS 204 Date/Time: 9/28/2021 2200 Personnel Count: 110

ASSIGNMENT LIST (ICS 204 WF)

CONTROLLED UNCLASSIFIED
INFORMATION/BASIC

1. Incident Name:		2. Operational Period:				3. Branch		Division	
CALDOR		Date From: 09/29/21	Date To: 09/30/21			III		Q	
		Time From: 0700	Time To: 0700			Page 2 of 3		Quebec	
4. Operations Personnel:									
Operations Section Chief: Matt Ahearn				Night Ops: Luis Gomez (T)/ Jason Wingard (T)					
Branch Director: TBD				Deputy Ops: Rick Marinelli / Todd McDivitt / Pete Lawrence (T)					
Division/Group Supervisor: Ron Gregor				Air Attack: Todd White					
5. Resources Assigned:									
** Resources Below in Bold are 12 Hour **									
Resource Identifier	ALS	LWD	Leader	Personnel	Request #	Hours	Reporting Location		
ENG4 TIMBER BASIN E1		10/6	FARMER	3	E-50316	0700-1900	HEAVENLY ICP		
ENG6 NBF 661		10/2	JONES	3	E-50222	0700-1900	HEAVENLY ICP		
ENG6 ALPINE WILDFIRE		10/1	PINSON	3	E-21103	0700-1900	HEAVENLY ICP		
ENG6 PEANUT PIE		10/2	GOOD GUN	3	E-50219	0700-1900	HEAVENLY ICP		
ENG6 OC FORESTRY		10/4	ABEL	3	E-50293	0700-1900	HEAVENLY ICP		
WTT2 CGS INC		10/19	CORELY	1	E-20280	0700-1900	HEAVENLY ICP		
WTT2 AC WATER		10/19	ROSE	1	E-20017	0700-1900	HEAVENLY ICP		
WTT2 ID-EIS UCON		10/2	BOUNDS	2	E-50352	0700-1900	HEAVENLY ICP		
WTS2 HOME STYLE WATER		10/4	CASTILLO	1	E-50288	0700-1900	HEAVENLY ICP		
WTS2 MOAPA VALLEY 2		10/12	HASKELL	1	E-50372	0700-1900	HEAVENLY ICP		
WTS3 MOAPA VALLEY FD		10/2	WITTER	1	E-50245	0700-1900	HEAVENLY ICP		
WTS3 AZ-PINETOP		10/2	FINCH	2	E-50242	0700-1900	HEAVENLY ICP		
DOZ2 HERTZIG 2		10/8	HERTZIG	2	E-50354	0700-1900	HEAVENLY ICP		
EXCA MC EXCAVATION		10/3	STANHUPE	2	E-235	0700-1900	HEAVENLY ICP		
SKD BULL CREEK		10/4	CAHOON	2	E-65	0700-1900	HEAVENLY ICP		
6. Work Assignments:									
TASK: Actively suppress any fire along Schneider Camp 4x4 Rd. Reinforce existing containment lines and mop up to the extent necessary, utilizing natural barriers. Secure any heat sources between DP-65 and Scout Peak									
PURPOSE: Minimize any fire progression and ensure the safety of those working within the division									
END STATE: Fires edge in the division is controlled and escape is improbable									
7. Special Instructions:									
Backhaul trash, excess supplies and provide a location for accountable property									
Identify and coordinate the removal of hazard trees									
Resources denoted with * is identified as I/A resources within the TFR. Resources denoted with *** are Lend Lease to the Rubicon Fire									
Resources need to report to Heavenly ICP (3860 Saddle Rd., South Lake Tahoe, CA 96150) for briefing and end of shift									
8. Communications									
Name	Ch	Function	Rx Freq	Rx Tone	Tx Freq	Tx Tone	Notes		
COMMAND SEE ICS 205	1	COMMAND							
NIFC T3	8	TACTICAL	168.6000N		168.6000N				
A/G CMD	12	A/G CMD	167.9500N		167.9500N				
CALCORD	15	COORDINATION	156.0750N	156.7	156.0750N	156.7			
GUARD 16	16	EMERGENCY	168.6250N		168.6250N	110.9			
9. Prepared by: Name:									
Jeremy Ownens				RESL					
				Signature: _____					
ICS 204		Date/Time: 9/28/2021 2200				Personnel Count: 30			

ASSIGNMENT LIST (ICS 204 WF)

CONTROLLED UNCLASSIFIED
INFORMATION//BASIC

1. Incident Name: <p style="text-align: center; font-weight: bold;">CALDOR</p>	2. Operational Period: Date From: 09/29/21 Date To: 09/30/21 Time From: 0700 Time To: 0700	3. Branch Division <p style="text-align: center; font-weight: bold;">III Q</p> <p style="text-align: center;">Page 3 of 3 Quebec</p>
--	---	---

4. Operations Personnel:	
Operations Section Chief: Matt Ahearn	Night Ops: Luis Gomez (T) / Jason Wingard (T)
Branch Director: TBD	Deputy Ops: Rick Marinelli / Todd McDivitt / Pete Lawrence (T)
Division/Group Supervisor: Ron Gregor	Air Attack: Todd White

5. Resources Assigned:	** Resources Below in Bold are 12 Hour **							
Resource Identifier	ALS	LWD	Leader	Personnel	Request #	Hours	Reporting Location	
FMOD A&F ENTERPRISES 2		10/3	JENKINS	2	O-50344	0700-1900	HEAVENLY ICP	
FMOD A&A FALLERS		10/7	ADAMS	2	O-50513	0700-1900	HEAVENLY ICP	
FMOD TIMBER TIPPER		10/8	DANVILLE	2	O-50514	0700-1900	HEAVENLY ICP	
TFLD BROOKS		10/5	BROOKS	1	O-50484	0700-1900	HEAVENLY ICP	
TFLD EVANS		10/7	EVANS	1	O-50548	0700-1900	HEAVENLY ICP	
TFLD(T) GIESBRECHT		10/7	GIESBRECHT	1	O-50582	0700-1900	HEAVENLY ICP	
SOFR(T) CABANAS		10/3	CABANAS	1	O-50402	0700-1900	HEAVENLY ICP	
SOF2(T) PRINS		9/30	PRINS	1	O-50329	0700-1900	HEAVENLY ICP	
EMPF IGNASH (UTV)	X	10/11	IGNASH	1	E-50367	0700-1900	HEAVENLY ICP	
EMTF WILD (UTV)		10/11	WILD	1	E-50367	0700-1900	HEAVENLY ICP	
EMPF FLORES (UTV)	X	10/4	FLORES	1	E-50176	0700-1900	HEAVENLY ICP	
EMTF WIDICK (UTV)		10/4	WIDICK	1	E-50176	0700-1900	HEAVENLY ICP	

6. Work Assignments:
 TASK: Actively suppress any fire along Schneider Camp 4x4 Rd. Reinforce existing containment lines and mop up to the extent necessary, utilizing natural barriers. Secure any heat sources between DP-65 and Scout Peak
 PURPOSE: Minimize any fire progression and ensure the safety of those working within the division
 END STATE: Fires edge in the division is controlled and escape is improbable

7. Special Instructions:
 Backhaul trash, excess supplies and provide a location for accountable property
 Identify and coordinate the removal of hazard trees
 Resources denoted with * is identified as I/A resources within the TFR. **Resources denoted with *** are Lend Lease to the Rubicon Fire**
 Resources need to report to Heavenly ICP (3860 Saddle Rd., South Lake Tahoe, CA 96150) for briefing and end of shift

8. Communications							
Name	Ch	Function	Rx Freq	Rx Tone	Tx Freq	Tx Tone	Notes
COMMAND SEE ICS 205	1	COMMAND					
NIFC T3	8	TACTICAL	168.6000N		168.6000N		
A/G CMD	12	A/G CMD	167.9500N		167.9500N		
CALCORD	15	COORDINATION	156.0750N	156.7	156.0750N	156.7	
GUARD 16	16	EMERGENCY	168.6250N		168.6250N	110.9	

9. Prepared by: Name: Jeremy Ownens RESL Signature: _____

ICS 204 Date/Time: 9/28/2021 2200 Personnel Count: 15

ASSIGNMENT LIST (ICS 204 WF)

CONTROLLED UNCLASSIFIED
INFORMATION//BASIC

1. Incident Name:		2. Operational Period:				3. Branch		Division	
CALDOR		Date From: 09/29/21		Date To: 09/30/21		III		R	
		Time From: 0700		Time To: 0700					
4. Operations Personnel:						Page 1 of 2		Romeo	
Operations Section Chief: Matt Ahearn				Night Ops: Luis Gomez (T)/ Jason Wingard (T)					
Branch Director: TBD				Deputy Ops: Rick Marinelli / Todd McDivitt / Pete Lawrence (T)					
Division/Group Supervisor: Garth Crow				Air Attack: Todd White					
5. Resources Assigned:		** Resources Below in Bold are 12 Hour **							
Resource Identifier	ALS	LWD	Leader	Personnel	Request #	Hours	Reporting Location		
HC2 FIRESTORM		10/2	LOPEZ	20	C-108	0700-1900	HEAVENLY ICP		
HC2 GRAYBACK FORESTRY		10/8	TOWNSEND	20	C-50092	0700-1900	HEAVENLY ICP		
ENG3 CCD 3324		10/1	VANDERSLICE	5	E-50195	0700-1900	HEAVENLY ICP		
ENG3 J3 CONTRACTING 2		10/4	MCANDREW	3	E-50294	0700-1900	HEAVENLY ICP		
ENG3 TNF 333		10/8	ACHTER	6	E-50347	0700-1900	HEAVENLY ICP		
ENG3 OUTBACK		10/8	WOLLEBAEK	3	E-50346	0700-1900	HEAVENLY ICP		
ENG4 COOPER CONTRACTING		10/1	BURWELL	3	E-50223	0700-1900	HEAVENLY ICP		
ENG4 BOSKET'S PLUMBING		10/1	BAILEY	3	E-50202	0700-1900	HEAVENLY ICP		
ENG4 PACIFIC OASIS		10/3	WILSON	3	E-50285	0700-1900	HEAVENLY ICP		
ENG4 ID BOF E461		10/8	PATOTA	8	E-50348	0700-1900	HEAVENLY ICP		
ENG6 INDIANOLA		9/29	ALLSOP	3	E-50198	0700-1900	HEAVENLY ICP		
ENG6 N45		9/29	NAEGELE	2	E-50265	0700-1900	HEAVENLY ICP		
ENG6 BKF E664		9/29	WOLFF	4	E-50201	0700-1900	HEAVENLY ICP		
ENG6 OREGON WOODS INC		10/1	PARKINS	3	E-50210	0700-1900	HEAVENLY ICP		
ENG6 ALLEN FIRE LLC		10/1	ALLEN	3	E-50218	0700-1900	HEAVENLY ICP		
ENG6 TIMBER RIDGE		10/3	TODD	3	E-50284	0700-1900	HEAVENLY ICP		
ENG6 GRIZ ONE		10/3	TABER	3	E-50286	0700-1900	HEAVENLY ICP		
ENG6 FIRST STRIKE		10/3	FOOTE	3	E-50278	0700-1900	HEAVENLY ICP		
ENG6 YABOY FIRE		10/6	BRADY	3	E-50320	0700-1900	HEAVENLY ICP		
WTS2 DAHL & SONS		10/4	DAHL	1	E-50333	0700-1900	HEAVENLY ICP		
WTS1 ASPLIN ENTERPRISE		9/29	BECKER	1	E-50370	0700-1900	HEAVENLY ICP		
6. Work Assignments:									
TASK: Secure existing line and utilize natural barriers as control lines. Mop up to the extent necessary near Silver Lake and secure any heat sources south of Hwy 88									
PURPOSE: Minimize any fire progression and ensure the safety of those working near Hwy 88									
END STATE: Fires edge in the division in controlled and escape is improbable									
7. Special Instructions:									
Backhaul trash, excess supplies and provide a location for accountable property									
Identify and coordinate the removal of hazard trees									
Resources denoted with * is identified as I/A resources within the TFR. Resources denoted with *** are Lend Lease to the Rubicon Fire									
Resources need to report to Heavenly ICP (3860 Saddle Rd., South Lake Tahoe, CA 96150) for briefing and end of shift									
8. Communications									
Name	Ch	Function	Rx Freq	Rx Tone	Tx Freq	Tx Tone	Notes		
COMMAND SEE ICS 205	1	COMMAND							
NIFC T7	9	TACTICAL	168.2500N		168.2500N				
A/G CMD	12	A/G CMD	167.9500N		167.9500N				
CALCORD	15	COORDINATION	156.0750N	156.7	156.0750N	156.7			
GUARD 16	16	EMERGENCY	168.6250N		168.6250N	110.9			
9. Prepared by: Name:									
Jeremy Ownens				RESL					
Signature: _____									
ICS 204		Date/Time: 9/28/2021 2200				Personnel Count: 98			

ASSIGNMENT LIST (ICS 204 WF)

CONTROLLED UNCLASSIFIED
INFORMATION//BASIC

1. Incident Name: CALDOR		2. Operational Period: Date From: 09/29/21 Date To: 09/30/21 Time From: 0700 Time To: 0700		3. Branch: III	Division: R
---------------------------------	--	--	--	-----------------------	--------------------

4. Operations Personnel:		Page 2 of 2 Romeo			
Operations Section Chief: Matt Ahearn	Night Ops: Luis Gomez (T)/ Jason Wingard (T)				
Branch Director: TBD	Deputy Ops: Rick Marinelli / Todd McDivitt / Pete Lawrence (T)				
Division/Group Supervisor: Garth Crow	Air Attack: Todd White				

5. Resources Assigned:	** Resources Below in Bold are 12 Hour **						Hours	Reporting Location
Resource Identifier	ALS	LWD	Leader	Personnel	Request #	Hours	Reporting Location	
DO22 BUFFINGTON		10/17	BENSON	2	E-20022	0700-1900	HEAVENLY ICP	
DO22 2C LAND AND TIMBER		9/30	CARRIOOO	2	E-50234	0700-1900	HEAVENLY ICP	
DO22 CECIL LOGGING		10/5	CAMPBELL	2	E-20702	0700-1900	HEAVENLY ICP	
DO23 DEUCES TRUCKING		9/30	JOHNSON	3	E-50238	0700-1900	HEAVENLY ICP	
STEN(T) DOHMAN		10/5	DOHMAN	1	O-50492	0700-1900	HEAVENLY ICP	
HEQB CRUZ (T)		10/8	CRUZ	1	O-50503	0700-1900	HEAVENLY ICP	
SOFR(T) CABANAS		10/3	CABANAS	1	O-50402	0700-1900	HEAVENLY ICP	
SOF2(T) PRINS		9/30	PRINS	1	O-50329	0700-1900	HEAVENLY ICP	
EMPF VASQUEZ	X	9/30	VASQUEZ	1	O-50379	0700-1900	HEAVENLY ICP	
EMPF POLLOCK	X	10/7	POLLOCK	1	O-50533	0700-1900	HEAVENLY ICP	
EMTF HAHL		10/5	HAHL	1	E-50382	0700-1900	HEAVENLY ICP	

6. Work Assignments:
TASK: Secure existing line and utilize natural barriers as control lines. Mop up to the extent necessary near Silver Lake and secure any heat sources south of Hwy 88
PURPOSE: Minimize any fire progression and ensure the safety of those working near Hwy 88
END STATE: Fires edge in the division in controlled and escape is improbable

7. Special Instructions:
Backhaul trash, excess supplies and provide a location for accountable property
Identify and coordinate the removal of hazard trees
Resources denoted with * is identified as I/A resources within the TFR. **Resources denoted with *** are Lend Lease to the Rubicon Fire**
Resources need to report to Heavenly ICP (3860 Saddle Rd., South Lake Tahoe, CA 96150) for briefing and end of shift

8. Communications							
Name	Ch	Function	Rx Freq	Rx Tone	Tx Freq	Tx Tone	Notes
COMMAND SEE ICS 205	1	COMMAND					
NIFC T7	9	TACTICAL	168.2500N		168.2500N		
A/G CMD	12	A/G CMD	167.9500N		167.9500N		
CALCORD	15	COORDINATION	156.0750N	156.7	156.0750N	156.7	
GUARD 16	16	EMERGENCY	168.6250N		168.6250N	110.9	

9. Prepared by: Name: Jeremy Ownens RESL Signature: _____
ICS 204 Date/Time: 9/28/2021 2200 Personnel Count: 16

ASSIGNMENT LIST (ICS 204 WF)

CONTROLLED UNCLASSIFIED
INFORMATION//BASIC

1. Incident Name:	2. Operational Period:	3. Branch	Division
CALDOR	Date From: 09/29/21 Date To: 09/30/21 Time From: 0700 Time To: 0700	III	Suppression Repair

4. Operations Personnel: Page 1 of 3

Operations Section Chief: Matt Ahearn	Night Ops: Luis Gomez (T)/ Jason Wingard (T)
Branch Director: TBD	Deputy Ops: Rick Marinelli / Todd McDivitt / Pete Lawrence (T)
Division/Group Supervisor: Rob Bertolina	Air Attack: Todd White

5. Resources Assigned: ** Resources Below in Bold are 12 Hour **

Resource Identifier	ALS	LWD	Leader	Personnel	Request #	Hours	Reporting Location
HC2 PACIFIC COAST		10/2	CISNEROS	20	C-50003	0700-1900	HEAVENLY ICP
HC2 R&R CONTRACTING		10/11	IBARRA	20	C-50041	0700-1900	HEAVENLY ICP
HC2 GRIZZLY FIREFIGHTERS		10/11	FONSECA	20	C-50042	0700-1900	HEAVENLY ICP
HC2 MILLER TIMBER		10/5	SCOTT	20	C-50069	0700-1900	HEAVENLY ICP
HC2 MOUNTAINEERING		10/5	PEREZ	20	C-50072	0700-1900	HEAVENLY ICP
UTIL CRAIG		9/30	CRAIG	3	E-50165	0700-1900	HEAVENLY ICP
WTS1 LOVATO		10/3	LOVATO	1	E-50248	0700-1900	HEAVENLY ICP
WTS2 ABLE SERVICES		10/2	DREW	1	E-50240	0700-1900	HEAVENLY ICP
WTS2 KILGORE		10/11	HOWARD	1	E-50378	0700-1900	HEAVENLY ICP
WTT2 QUALITY CONST		10/1	INDIHOR	1	E-20008	0700-1900	HEAVENLY ICP
WTT2 SILVER STATE		10/6	OFIESH	2	E-50297	0700-1900	HEAVENLY ICP
WTS3 US RANCH		10/2	SALAZAR	1	E-50246	0700-1900	HEAVENLY ICP
DOZ2 AAA EQUIP		10/8	HATLER	2	E-50353	0700-1900	HEAVENLY ICP
EXCA DAVIS CORP		10/10	PARKER	2	E-688	0700-1900	HEAVENLY ICP
EXCA JW MORRISON		10/10	TISELL	2	E-50229	0700-1900	HEAVENLY ICP
EXCA HACKER MACHINES		10/17	ARCE	2	E-50233	0700-1900	HEAVENLY ICP
EXCA PRO INC		10/2	ROE	2	E-50261	0700-1900	HEAVENLY ICP
EXCA BALDWIN DIESEL		10/2	MILLER	2	E-50232	0700-1900	HEAVENLY ICP
EXCA SERMON		10/2	SERMON	2	E-50260	0700-1900	HEAVENLY ICP
EXCA WESTERN MT EXCA		10/4	BUGLI	2	E-50264	0700-1900	HEAVENLY ICP

6. Work Assignments:

TASK: Perform priority suppression repair work within Branch 3. Coordinate closely with CALFIRE AEU and USFS REAFs, focusing repair efforts in Angora Mtn, High Meadows, Apache Log Jam and Cheyenne Wetland Meadow
 PURPOSE: Minimize any near-term environmental resource impacts as a result of fire suppression efforts
 END STATE: Watershed and areas adjacent to values at risk are protected using the approved standard

7. Special Instructions:

Backhaul trash, excess supplies and provide a location for accountable property
 Identify and coordinate the removal of hazard trees
 Resources denoted with * is identified as I/A resources within the TFR. **Resources denoted with *** are Lend Lease to the Rubicon Fire**
 Resources need to report to Heavenly ICP (3860 Saddle Rd., South Lake Tahoe, CA 96150) for briefing and end of shift

8. Communications

Name	Ch	Function	Rx Freq	Rx Tone	Tx Freq	Tx Tone	Notes
COMMAND SEE ICS 205	1	COMMAND					
VFIRE 24	10	TACTICAL	154.272N		154.2725N		
A/G CMD	12	A/G CMD	167.9500N		167.9500N		
CALCORD	15	COORDINATION	156.0750N	156.7	156.0750N	156.7	
GUARD 16	16	EMERGENCY	168.6250N		168.6250N	110.9	

9. Prepared by: Name: Jeremy Ownens RESL

Signature: _____

ICS 204 Date/Time: 9/28/2021 2200 Personnel Count: 122

ASSIGNMENT LIST (ICS 204 WF)

CONTROLLED UNCLASSIFIED
INFORMATION//BASIC

1. Incident Name: <p style="text-align: center;">CALDOR</p>	2. Operational Period: Date From: 09/29/21 Date To: 09/30/21 Time From: 0700 Time To: 0700	3. Branch Division <p style="text-align: center;">III Suppression Repair</p>
4. Operations Personnel:		Page 2 of 3

Operations Section Chief: Matt Ahearn	Night Ops: Luis Gomez (T)/ Jason Wingard (T)
Branch Director: TBD	Deputy Ops: Rick Marinelli / Todd McDivitt / Pete Lawrence (T)
Division/Group Supervisor: Rob Bertolina	Air Attack: Todd White

5. Resources Assigned:		** Resources Below in Bold are 12 Hour **					
Resource Identifier	ALS	LWD	Leader	Personnel	Request #	Hours	Reporting Location
EXCA ON-SITE EQUIPMENT		10/8	SCHENCK	2	E-50355	0700-1900	HEAVENLY ICP
EXCA HEAVYHAUL 1		10/8	HARRIS	2	E-20028	0700-1900	HEAVENLY ICP
EXCA HEAVYHAUL 2		10/8	BAXTER	2	E-21346	0700-1900	HEAVENLY ICP
EXCA DODGE		10/11	DODGE	2	E-50356	0700-1900	HEAVENLY ICP
EXCA ALLEN WATER		10/10	ALLEN	2	E-50357	0700-1900	HEAVENLY ICP
GRD JDB3		10/8	WERRY	2	E-50147	0700-1900	HEAVENLY ICP
CHIP MCKELLAR TREE SERV		10/12	AYALA	3	E-50134	0700-1900	HEAVENLY ICP
CHIP SISKIYOU TREES		9/30	LANGE	3	E-50136	0700-1900	HEAVENLY ICP
MAST JANC		10/1	JANC	2	E-50251	0700-1900	HEAVENLY ICP
MAST PERRAULT		10/1	DECUIR	2	E-50250	0700-1900	HEAVENLY ICP
FMOD UNDERDOG TIMBER 1		10/9	BROWN	2	O-232	0700-1900	HEAVENLY ICP
*** FMOD UNDERDOG TIMBER 2		10/6	POOR	2	O-20140	0700-1900	HEAVENLY ICP
FMOD RANDY&ROB FALLERS		10/7	SHAULIS	2	O-50516	0700-1900	HEAVENLY ICP
TFLD PARDUE		10/6	PARDUE	1	O-50422	0700-1900	HEAVENLY ICP
TFLD NELSON		10/6	NELSON	1	O-50334	0700-1900	HEAVENLY ICP
TFLD PATTERSON (T)		10/8	PATTERSON	1	O-50508	0700-1900	HEAVENLY ICP
TFLD MORALES (T)		10/11	MORALES	1	N/A	0700-1900	HEAVENLY ICP
HEQB ALCANTAR (T)		10/11	ALCANTAR	1	N/A	0700-1900	HEAVENLY ICP

6. Work Assignments:
 TASK: Perform priority suppression repair work within Branch 3. Coordinate closely with CALFIRE AEU and USFS REAFs, focusing repair efforts in Angora Mtn, High Meadows, Apache Log Jam and Cheyenne Wetland Meadow
 PURPOSE: Minimize any near-term environmental resource impacts as a result of fire suppression efforts
 END STATE: Watershed and areas adjacent to values at risk are protected using the approved standard

7. Special Instructions:
 Backhaul trash, excess supplies and provide a location for accountable property
 Identify and coordinate the removal of hazard trees
 Resources denoted with * is identified as I/A resources within the TFR. **Resources denoted with *** are Lend Lease to the Rubicon Fire**
 Resources need to report to Heavenly ICP (3860 Saddle Rd., South Lake Tahoe, CA 96150) for briefing and end of shift

8. Communications							
Name	Ch	Function	Rx Freq	Rx Tone	Tx Freq	Tx Tone	Notes
COMMAND SEE ICS 205	1	COMMAND					
VFIRE 24	10	TACTICAL	154.272N		154.2725N		
A/G CMD	12	A/G CMD	167.9500N		167.9500N		
CALCORD	15	COORDINATION	156.0750N	156.7	156.0750N	156.7	
GUARD 16	16	EMERGENCY	168.6250N		168.6250N	110.9	

9. Prepared by: Name: Jeremy Ownens RESL Signature: _____
ICS 204 Date/Time: 9/28/2021 2200 Personnel Count: 31

ASSIGNMENT LIST (ICS 204 WF)

CONTROLLED UNCLASSIFIED
INFORMATION//BASIC

1. Incident Name:	2. Operational Period:	3. Branch	Division
CALDOR	Date From: 09/29/21 Date To: 09/30/21 Time From: 0700 Time To: 0700	III	Suppression Repair
4. Operations Personnel:		Page 3 of 3	

Operations Section Chief: Matt Ahearn	Night Ops: Luis Gomez (T)/ Jason Wingard (T)
Branch Director: TBD	Deputy Ops: Rick Marinelli / Todd McDivitt / Pete Lawrence (T)
Division/Group Supervisor: Rob Bertolina	Air Attack: Todd White

5. Resources Assigned:		** Resources Below in Bold are 12 Hour **					
Resource Identifier	ALS	LWD	Leader	Personnel	Request #	Hours	Reporting Location
HEQB IRWIN		10/5	IRWIN	1	O-50490	0700-1900	HEAVENLY ICP
HEQB TRAPP		10/5	TRAPP	1	O-50491	0700-1900	HEAVENLY ICP
HEQB(T) QUINN		10/4	QUINN	1	O-50497	0700-1900	HEAVENLY ICP
HEQB(T) YANCEY		10/7	YANCEY	1	O-50500	0700-1900	HEAVENLY ICP
HEQB SPILLERS (T)		10/8	SPILLERS	1	O-50504	0700-1900	HEAVENLY ICP
EMPF CRUMPACKER	X	9/29	CRUMPACKER	1	O-50263	0700-1900	HEAVENLY ICP
EMTF MOYER		10/9	MOYER	1	O-50543	0700-1900	HEAVENLY ICP
RAT1 (REMS)	X	10/4	HOOVER/PATTEN	2	E-50097	0700-1900	HEAVENLY ICP
REAF BROWN			BROWN	1	O-169	0700-1900	HEAVENLY ICP
REAF VAN SANT		9/29	VAN SANT	1	O-574	0700-1900	HEAVENLY ICP
REAF DALLON		10/5	DALLON	1	O-50385	0700-1900	HEAVENLY ICP
REAF LAESKE		10/4	LAESKE	1	O-50386	0700-1900	HEAVENLY ICP
REAF LANGLEY		10/4	LANGLEY	1	O-50387	0700-1900	HEAVENLY ICP
REAF KRAJA		10/1	KARJA	1	O-50388	0700-1900	HEAVENLY ICP
ARCH BONSKOWSKI		10/14	BONSKOWSKI	1	O-344	0700-1900	HEAVENLY ICP
THSP GUSSES		10/11	GUSSES	1	O-526	0700-1900	HEAVENLY ICP
FFT2 PETERSON		10/3	PETERSON	1	O-50641	0700-1900	HEAVENLY ICP

6. Work Assignments:
 TASK: Perform priority suppression repair work within Branch 3. Coordinate closely with CALFIRE AEU and USFS REAFs, focusing repair efforts in Angora Mtn, High Meadows, Apache Log Jam and Cheyenne Wetland Meadow
 PURPOSE: Minimize any near-term environmental resource impacts as a result of fire suppression efforts
 END STATE: Watershed and areas adjacent to values at risk are protected using the approved standard

7. Special Instructions:
 Backhaul trash, excess supplies and provide a location for accountable property
 Identify and coordinate the removal of hazard trees
 Resources denoted with * is identified as I/A resources within the TFR. **Resources denoted with *** are Lend Lease to the Rubicon Fire**
 Resources need to report to Heavenly ICP (3860 Saddle Rd., South Lake Tahoe, CA 96150) for briefing and end of shift

8. Communications							
Name	Ch	Function	Rx Freq	Rx Tone	Tx Freq	Tx Tone	Notes
COMMAND SEE ICS 205	1	COMMAND					
VFIRE 24	10	TACTICAL	154.272N		154.2725N		
A/G CMD	12	A/G CMD	167.9500N		167.9500N		
CALCORD	15	COORDINATION	156.0750N	156.7	156.0750N	156.7	
GUARD 16	16	EMERGENCY	168.6250N		168.6250N	110.9	

9. Prepared by: Name: Jeremy Ownens RESL Signature: _____
ICS 204 Date/Time: 9/28/2021 2200 Personnel Count: 16

ASSIGNMENT LIST (ICS 204 WF)

CONTROLLED UNCLASSIFIED
INFORMATION//BASIC

1. Incident Name:	2. Operational Period:	3. Branch	Division
CALDOR	Date From: 09/29/21 Date To: 09/30/21 Time From: 0700 Time To: 0700	Night	Night

Page 1 of 1

4. Operations Personnel:		Night Ops:	Luis Gomez (T) / Jason Wingard (T)
Operations Section Chief:	Matt Ahearn	Deputy Ops:	Rick Marinelli / Todd McDivitt / Pete Lawrence (T)
Branch Director:	TBD	Air Attack:	Todd White
Division/Group Supervisor:	Jeff Corser (T)		

5. Resources Assigned:		** Resources Below in Bold are 12 Hour **					
Resource Identifier	ALS	LWD	Leader	Personnel	Request #	Hours	Reporting Location
HC2IA NOREAST #3		10/7	BURGESS	20	C-50078	1900-0700	HEAVENLY ICP
S/T ENG3 ANF 1619C		10/7	NORTON	24	E-50323	1900-0700	HEAVENLY ICP
ENG3 BERTHOUD 613		10/6	PRIM	3	E-50317	1900-0700	HEAVENLY ICP
ENG4 WY CAMPPELL BRUSH 2		9/29	BURTON	3	E-50221	1900-0700	HEAVENLY ICP
ENG4 PVT E411		9/29	MARTIN	3	E-50197	1900-0700	HEAVENLY ICP
ENG4 IDAHO TRAILBLAZERS		10/6	TONEY	3	E-50315	1900-0700	HEAVENLY ICP
ENG6 MT-KNF 651		9/29	BERGET	8	E-50194	1900-0700	HEAVENLY ICP
ENG6 R04 311		10/6	TURNER	3	E-50200	1900-0700	HEAVENLY ICP
ENG6 BELLEVUE		9/30	ARENAS	2	E-50214	1900-0700	HEAVENLY ICP
ENG6 BLM AZ E3664		9/29	HINDMAN	7	E-50216	1900-0700	HEAVENLY ICP
ENG6 AZ-PNF E952		9/29	BADGER	7	E-50217	1900-0700	HEAVENLY ICP
ENG6 CONGAREE NP E632		10/6	JOHNSON	4	E-50313	1900-0700	HEAVENLY ICP
ENG6 TORCH FIRE		10/6	DAVIS	3	E-50318	1900-0700	HEAVENLY ICP
STEN(T) WHITE		9/29	WHITE	1	E-50221.1	1900-0700	HEAVENLY ICP
SOFR BALAO		10/5	BALAO	1	O-50528	1900-0700	HEAVENLY ICP
SOFR(T) AIROLA		10/5	AIROLA	1	O-50481	1900-0700	HEAVENLY ICP
MEDIC 2	X	10/10	CASTRO	2	E-20593	1900-0700	HEAVENLY ICP

6. Work Assignments:
 TASK: Engage in perimeter control efforts north of Caples Lake to Scout Peak, perform tactical patrol along highway corridors, respond to service calls, and mitigate any isolated heat sources within the fire perimeter where safe to do so
 PURPOSE: Minimize any fire progression, keeping the fire within its current footprint
 END STATE: Fires edge is controlled and escape is improbable

7. Special Instructions:
 Resources denoted with * is identified as I/A resources within the TFR.
Resources denoted with * are Lend Lease to the Rubicon Fire**
 Resources need to report to Heavenly ICP (3860 Saddle Rd., South Lake Tahoe, CA 96150) for briefing and end of shift

8. Communications							
Name	Ch	Function	Rx Freq	Rx Tone	Tx Freq	Tx Tone	Notes
COMMAND SEE ICS 205	1	COMMAND					
VFIRE 25	11	TACTICAL	154.2875N	156.7	154.2875N	156.7	
A/G CMD	12	A/G CMD	167.9500N		167.9500N		
CALCORD	15	COORDINATION	156.0750N	156.7	156.0750N	156.7	
GUARD 16	16	EMERGENCY	168.6250N		168.6250N	110.9	

9. Prepared by: Name: Jeremy Ownens RESL Signature: _____
ICS 204 Date/Time: 9/28/2021 2200 Personnel Count: 95



*Interagency Incident
Management*

ICS 205 - INCIDENT RADIO COMMUNICATIONS PLAN

CONTROLLED UNCLASSIFIED
INFORMATION//BASIC

1. Incident Name: CALDOR WEST Z1	2. Date/Time Prepared Date: 09/28/2021 Time: 1800
3. Operational Period: Date From: 09/29/21 Time From: 0700 Date To: 09/30/21 Time To: 0700	

4. Communications									
Ch#	Function	Name	Assigned To	Rx Freq	Rx Tone	Tx Freq	Tx Tone	Notes	
1	COMMAND	CMD 109	WEST BRANCHES	170.3875N	114.8	162.1750N	114.8	BIG HILL	
2	COMMAND	CMD 104	WEST BRANCHES	170.7625N	114.8	165.6250N	114.8	NORTH OF HWY 50 BETWEEN DP 21 AND DP 24	
3	COMMAND	CMD 1	WEST BRANCHES	170.9750N	114.8	168.7000N	114.8	LEEK SPRINGS	
4	COMMAND	CMD 11	WEST BRANCHES	170.6875N	114.8	166.575N	114.8	GRIZZLY FLATS AREA	
5	COMMAND	CMD 113	WEST BRANCHES	170.3125N	114.8	165.6750N	114.8	KIRKWOOD MOUNTAIN	
6	COMMAND	CMD 116	WEST BRANCHES	171.0375N	114.8	162.5875N	114.8	SIERRA SKI RESORT	
7	COMMAND	CMD 105	WEST BRANCHES	172.4500	114.8	166.9375	114.8	SACRAMENTO HILL	
8	TACTICAL	NIFC T1	DIV G/T/W	168.0500N		168.0500N			
9	TACTICAL	NIFC T6	FIRE SUPP.REPAIR	166.7750N		166.7750N			
10	TACTICAL	NIFC T3		168.6000N		168.6000N			
11	TACTICAL	NIFC T7		168.2500N		168.2500N			
12	A/G CMD	A/G CMD	ALL BRANCHES	167.9500N		167.9500N		AIR TO GROUND	
13	A/G TAC	A/G TAC	A/G BUCKETS	166.6125N		166.6125N			
14									
15	MEDICAL	CALCORD	ALL BRANCHES	156.0750N	156.7	156.0750N	156.7	EMS COORDINATION ONLY	
16	EMERGENCY	GUARD 16	ALL BRANCHES	168.6250N		168.6250N	110.9	EMERGENCY USE ONLY	
17									
18									
19									
20	EMERGENCY	GUARD 16	ALL BRANCHES	168.6250N		168.6250N	110.9	EMERGENCY USE ONLY	

5. Special Instructions
 CALDOR COMMUNICATION ICP HEAVENLY 408-510-8169

6. Prepared by (Communications Unit Leader): Name: TERRY BRINSON	Signature: _____
ICS 205 - CONTROLLED UNCLASSIFIED INFORMATION//BASIC	Date/Time: 09/28/2021 1800

NIMS IAP

ICS 205 - INCIDENT RADIO COMMUNICATIONS PLAN

CONTROLLED UNCLASSIFIED INFORMATION//BASIC

1. Incident Name: ENF/AEU INITIAL ATTACK ONLY	2. Date/Time Prepared Date: 09/28/2021 Time: 1800	3. Operational Period: Date To: 09/30/21 Time To: 0700
---	--	---

4. Communications

Ch#	Function	Name	Assigned To	Rx Freq	Rx Tone	Tx Freq	Tx Tone	Notes
1	COMMAND	ENFADM 1		172.3250N	156.7	165.2250N	110.9	FOREST ADMIN Tone 1-Alder
2	COMMAND	ENFADM 2		172.3250N	156.7	165.2250N	123.0	FOREST ADMIN Tone 2-Leek Springs
3	COMMAND	ENFADM 4		172.3250N	156.7	165.2250N	136.5	FOREST ADMIN Tone 4-Big Hill
4	COMMAND	ENFADM 6		172.3250N	156.7	165.2250N	156.7	FOREST ADMIN Tone 6-Echo Summit
5	COMMAND	XAM CT10		154.7625N	123.0	159.1800N	107.2	AMADOR CMD Tone 10-Leek Springs
6	COMMAND	XAM CT11		154.7625N	123.0	159.1800N	114.8	AMADOR CMD Tone 11-Zion Mountain
7	COMMAND	XED CT11		155.9025N	186.2	159.2775N	114.8	EL DORADO CMD Tone 11-Union
8	COMMAND	XED CT1		155.9025N	186.2	159.2775N	110.9	EL DORADO CMD Tone 1-Alder
9	COMMAND	XED CT4		155.9025N	186.2	159.2775N	136.5	EL DORADO CMD Tone 4-Big Hill
10	TACTICAL	R5 T4		166.5500N		166.5500N		REGION 5 TAC 4
11	TACTICAL	R5 T5		167.1125N		167.1125N		REGION 5 TAC 5
12	TACTICAL	R5 T6		168.2375N		168.2375N		REGION 5 TAC 6
13	TACTICAL	CDF T2		151.1600N	192.8	151.1600N	192.8	
14	TACTICAL	CDF T8		151.3700N	192.8	151.3700N	192.8	
15	AIR TO GROUND	A/G TAC	AIR TO GROUND	164.1375N		164.1375N		
16	EMERGENCY	GUARD 8	EMERGENCY	168.6250N		168.6250N	110.9	
17								
18								
19								
20	EMERGENCY	GUARD 8	EMERGENCY	168.6250N		168.6250N	110.9	

5. Special Instructions

6. Prepared by (Communications Unit Leader): Name: TERRY BRINSON	Signature: _____
ICS 205 - CONTROLLED UNCLASSIFIED INFORMATION//BASIC	Date/Time: 09/28/2021 1800

NIMS IAP

ICS 205 - INCIDENT RADIO COMMUNICATIONS PLAN

CONTROLLED UNCLASSIFIED
INFORMATION//BASIC

1. Incident Name: TAHOE BASIN I/A	2. Date/Time Prepared Date: 09/28/21 Time: 1800	3. Operational Period: Date To: 09/30/21 Time To: 0700						
4. Communications								
Ch#	Function	Name	Assigned To	Rx Freq	Rx Tone	Tx Freq	Tx Tone	Notes
1	FOREST NET	ENF T9	ALL DIVS	171.5250N	156.7	162.7500N	T9-100.0	HAWKINS PK
2	FOREST NET	TMU T2	ALL DIVS	172.3750N	156.7	164.9625N	T2-123.0	EAST PK
3	FOREST NET	HTF T3	ALL DIVS	173.7750		165.7500N	T3-131.8	HAWKINS PK
4	TACTICAL	NIFC T1	ALL DIVS	168.0500N		168.0500N		
5	TACTICAL	NIFC T2	ALL DIVS	168.200N		168.200N		
6	TACTICAL	R5T4	ALL DIVS	166.5500N		166.5500N		
7	TACTICAL	R5T5	ALL DIVS	167.1125N		167.1125N		
8	TACTICAL	VFIRE22	ALL DIVS	154.2650N	156.7	154.2650N	156.7	
9	TACTICAL	VFIRE23	ALL DIVS	154.2950N	156.7	154.2950N	156.7	
10	TACTICAL	VFIRE 26	ALL DIVS	154.3025N	156.7	154.3025N	156.7	
11	TACTICAL	CCD SOA	ALL DIVS	171.6750N		171.6750N		AKA" BLM SOA"
12	TACTICAL	NDF RED 1	ALL DIVS	159.3450N		159.3450N		
13	AIR TO GROUND	A/G 14	ALL DIVS	167.5000N		167.5000N		I/A A/G-ENF/TMU
14	AIR TO GROUND	A/G 51	ALL DIVS	168.3125N		168.3125N		I/A A/G-SIERRA FRONT
15	MEDICAL	CALCORD	ALL DIVS	156.0750N	156.7	156.0750N	156.7	MEDICAL COORDINATION
16	EMERGENCY	GUARD	EMERGENCY	168.6250N		168.6250N	110.9	EMERGENCY CONTACT
17								
18								
19								
20	EMERGENCY	GUARD	EMERGENCY	168.6250N		168.6250N	110.9	EMERGENCY CONTACT
5. Special Instructions								
6. Prepared by (Communications Unit Leader): Name: TERRY BRINSON			Signature: _____					
ICS 205 - CONTROLLED UNCLASSIFIED INFORMATION//BASIC			NIMS IAP			Date/Time: 09/28/21 1800		

ICS 205 - INCIDENT RADIO COMMUNICATIONS PLAN

CONTROLLED UNCLASSIFIED
INFORMATION/BASIC

1. Incident Name: CALDOR EAST Z3	2. Date/Time Prepared Date: 09/28/2021 Time: 1800	3. Operational Period: Date To: 09/30/21 Time To: 0700
---	--	---

4. Communications									
Ch#	Function	Name	Assigned To	Rx Freq	Rx Tone	Tx Freq	Tx Tone	Notes	
1	COMMAND	CMD 5	EAST BRANCHES	169.7500N	146.2	167.1000N	146.2	MONUMENT PK LINKED W/ C67,C93,C96	
2	COMMAND	CMD 93	EAST BRANCHES	166.6875N	146.2	162.9375N	146.2	SCOUT LINKED W/C5,C67,C96	
3	COMMAND	CMD 67	EAST BRANCHES	172.0750N	146.2	162.2000N	146.2	KIRKWOOD MT,LINKED W/C5,C93,C96	
4	COMMAND	CMD 96	EAST BRANCHES	169.9625N	146.2	165.0500N	146.2	PYRAMID PEAK LINKED W/C5,C93,C67	
5	COMMAND	CMD 56	WEST BRANCHES	172.3500N	114.8	163.0375N	114.8	MONUMENT PK LINK TO WEST	
6	TACTICAL	NIFC T1	DIV I/M	168.0500N		168.0500N			
7	TACTICAL	NIFC T6	DIV O/P	166.7750N		166.7750N			
8	TACTICAL	NIFC T3	DIV Q	168.6000N		168.6000N			
9	TACTICAL	NIFC T7	DIV R	168.2500N		168.2500N			
10	TACTICAL	VFIRE 24	FIRE SUPP.REPAIR	154.2725N	156.7	154.2725N	156.7		
11	TACTICAL	VFIRE 25	NIGHT OPS	154.2875N	156.7	154.2875N	156.7		
12	A/G CMD	A/G CMD	ALL BRANCHES	167.9500N		167.9500N			
13	A/G TAC	A/G TAC	A/G BUCKETS	166.6125N		166.6125N			
14									
15	COORDINATION	CALCORD	ALL BRANCHES	156.0750N	156.7	156.0750N	156.7	MEDICAL COORDINATION	
16	EMERGENCY	GUARD 16	ALL BRANCHES	168.6250N		168.6250N	110.9	EMERGENCY USE ONLY	
17									
18									
19									
20	EMERGENCY	GUARD 16	ALL BRANCHES	168.6250N		168.6250N	110.9	EMERGENCY USE ONLY	

EAST COMMUNICATION 408-510-8169

6. Prepared by (Communications Unit Leader): Name: TERRY BRINSON	Signature: _____
NIMS IAP	Date/Time: 09/28/21 1800

MEDICAL PLAN (ICS 206 WF) CIIMT 13

1. Incident Name			2. Operational Period				
CALDOR INCIDENT			Date/Time: 09/29/2021 – 09/30/2021 (24 hours)				
3. EMS / Ambulance Services/Aid Stations							
Name	Location	Frequency/Phone		Advanced Life Support (ALS) Yes No			
MEDICAL UNIT	ICP	805-813-3858 909-908-4778		X			
MOBILE MEDICAL SUPPORT TRAILER	EL DORADO BASE CAMP	805-813-3858 909-908-4778		X			
EL DORADO	CAMINO ECC SLT DISPATCH	530-647-5220 530-542-6148		X			
AMERICAN LEGION	CAMINO ECC SLT DISPATCH	530-647-5220 530-542-6148		X			
4. Air Rescue / Air Ambulance Services							
Name	Phone	Type of Aircraft & Capability					
H-3SH	CONTACT CALDOR COMMUNICATIONS	HELICOPTER – BLS, SHORT HAUL, AND LITTER CAPABLE					
CAREFLIGHT	CAMINO ECC 530-647-5220	AIR AMBULANCE ALS – NO HOIST					
CALSTAR 6	CAMINO ECC 530-647-5220	AIR AMBULANCE ALS – NO HOIST					
5. Hospitals (all times estimated from incident location)							
Name & Level	GPS Datum – WGS 84 Degrees Decimal Minutes		Travel Time Air Gnd		Phone	Helipad Yes No	Address
BARTON MEMORIAL HOSPITAL (LEVEL 3)	Lat:	N 38° 54.72'	2 MIN	5 MIN	530-541-3420	X	2170 South Ave. South Lake Tahoe, CA 96150
	Long:	W 119° 59.72'					
RENOWN REGIONAL MEDICAL CENTER (LEVEL 2)	Lat:	N 39° 31.51'	20 MIN	1.5 HRS	775-982-2005	X	1156 Mill St Reno, NV 89502
	Long:	W 119° 47.75'					
SUTTER ROSEVILLE MEDICAL CENTER (LEVEL 2)	Lat:	N 38° 45.97'	45 MIN	3 HRS	916-781-1200	X	1 Medical Plaza Dr. Roseville, CA 95661
	Lat:	W 121° 14.87'					
UC DAVIS MEDICAL CENTER (LEVEL 1 TRAUMA/BURN)	Lat:	N 38° 33.32'	45 MIN	3 HRS	916-703-6576	X	2315 Stockton Blvd. Sacramento, CA 95817
	Long:	W 121° 27.35'					
6. Division / Crew Emergency Pre-Plan							
<i>Update and discuss with assigned resources daily.</i>							
Fireline EMT / Medic's Division / Branch Location							
Air Hoist site location site: Lat: / Long: / Elevation:							
Helispot: Lat: / Long: / Elevation:							
7. Prepared By (Medical Unit Leader)		8. Date/Time		9. Reviewed By (Safety Officer)		10. Date/Time	
<i>Kevin Palm</i>		09/28/2021 1600		<i>Kevin Southerland / Jack Wise</i>		09/28/2021 1600	

MEDICAL PLAN (ICS 206 WF)

Controlled Unclassified Information//Basic

Medical Incident Report

FOR A NON-EMERGENCY INCIDENT, WORK THROUGH CHAIN OF COMMAND TO REPORT AND TRANSPORT INJURED PERSONNEL AS NECESSARY.

FOR A MEDICAL EMERGENCY: IDENTIFY ON SCENE INCIDENT COMMANDER BY NAME AND POSITION AND ANNOUNCE "MEDICAL EMERGENCY" TO INITIATE RESPONSE FROM IMT COMMUNICATIONS/DISPATCH.

Use the following items to communicate situation to communications/dispatch.

1. CONTACT COMMUNICATIONS / DISPATCH (**Verify correct frequency prior to starting report**)

Ex: "Communications, Div. Alpha. Stand-by for Emergency Traffic."

2. INCIDENT STATUS: *Provide incident summary (including number of patients) and command structure.*

Ex: "Communications, I have a Red priority patient, unconscious, struck by a falling tree. Requesting air ambulance to Forest Road 1 at (Lat./Long.) This will be the Trout Meadow Medical, IC is TFLD Jones. EMT Smith is providing medical care."

Severity of Emergency / Transport Priority	<input type="checkbox"/> RED / PRIORITY 1 Life or limb threatening injury or illness. Evacuation need is IMMEDIATE <i>Ex: Unconscious, difficulty breathing, bleeding severely, 2° – 3° burns more than 4 palm sizes, heat stroke, disoriented.</i> <input type="checkbox"/> YELLOW / PRIORITY 2 Serious Injury or illness. Evacuation may be DELAYED if necessary. <i>Ex: Significant trauma, unable to walk, 2° – 3° burns not more than 1-3 palm sizes.</i> <input type="checkbox"/> GREEN / PRIORITY 3 Minor Injury or illness. Non-Emergency transport <i>Ex: Sprains, strains, minor heat-related illness.</i>	
Nature of Injury or Illness & Mechanism of Injury		<i>Brief Summary of Injury or Illness (Ex: Unconscious, Struck by Falling Tree)</i>
Transport Request		<i>Air Ambulance / Short Haul/Hoist Ground Ambulance / Other</i>
Patient Location		<i>Descriptive Location & Lat. / Long. (WGS84)</i>
Incident Name		<i>Geographic Name + "Medical" (Ex: Trout Meadow Medical)</i>
On-Scene Incident Commander		<i>Name of on-scene IC of Incident within an Incident (Ex: TFLD Jones)</i>
Patient Care		<i>Name of Care Provider (Ex: EMT Smith)</i>

3. INITIAL PATIENT ASSESSMENT: *Complete this section for each patient as applicable (start with the most severe patient)*

Patient Assessment: See IRPG page 106

Treatment:

4. TRANSPORT PLAN:

Evacuation Location (if different): *(Descriptive Location (drop point, intersection, etc.) or Lat. / Long.)* Patient's ETA to Evacuation Location:

Helispot / Extraction Site Size and Hazards:

5. ADDITIONAL RESOURCES / EQUIPMENT NEEDS:

Example: Paramedic/EMT, Crews, Immobilization Devices, AED, Oxygen, Trauma Bag, IV/Fluid(s), Splints, Rope rescue, Wheeled litter, HAZMAT, Extrication

6. COMMUNICATIONS: Identify State Air/Ground EMS Frequencies and Hospital Contacts as applicable

Function	Channel Name/Number	Receive (RX)	Tone/NAC *	Transmit (TX)	Tone/NAC *
COMMAND					
AIR-TO-GRND					
TACTICAL					

7. CONTINGENCY: **Considerations:** *If primary options fail, what actions can be implemented in conjunction with primary evacuation method? Be thinking ahead.*

8. ADDITIONAL INFORMATION: *Updates/Changes, etc.*

REMEMBER: Confirm ETA's of resources ordered. Act according to your level of training. Be Alert. Keep Calm. Think Clearly. Act Decisively.



CODE OF CONDUCT INCIDENT PERSONNEL

Each individual on this incident is responsible for:

- Being *ready and able* to perform their assigned duties effectively
- Conducting themselves in a manner that treats people with dignity, equality, courtesy, and respect
- Abiding by agency ethics and conduct regulations
- Reporting any harassment or other inappropriate behavior

Each individual on this incident has the right to:

- Work in an environment characterized by safe work practices
- Work in a fair and harassment free environment
- Say “No” to unwelcome advances or requests for favors
- File complaints or grievances through appropriate avenues

There is zero tolerance for inappropriate behavior while assigned to the incident, including

- Illegal drug use
- Alcohol use
- Unsafe work practices and activities
- Discrimination
- Sexual harassment
- Fighting, threatening and abusive behaviors
- Using social media and electronic communication devices for personal business while engaged in fire assignment duties
- Other violations of USDA and Forest Service standards of conduct

Failure to adhere to the Code of Conduct could result in dismissal from the incident, with notification to your home unit.

The public expects our best efforts; they see us as professionals in what we say and do. Let's continue to show them we are!

Caldor Fire
September 29, 2021
Human Resource Message

Rights and Responsibilities While On Assignment

You have a right to:

- A safe work environment
- Adequate information, food, sleep, equipment, and transportation
- Answers to your questions

But it's not one-sided. Your help, cooperation and commitment are needed. In order for all fire personnel to be effective, here is an outline of your responsibilities:

Promote and Maintain Good Communications

Adequate and accurate communications and information flow are essential for efficient fire suppression efforts and effective interpersonal relations.

Maintain an Attitude of Respect and Concern for your Colleagues.

Fire suppression efforts can only be accomplished by accessing the skills and abilities of a wide variety of people. An attitude of **mutual respect** and **appropriate behavior** is essential for all personnel. Civil Rights violations will be dealt with promptly. If you have a concern, please report it to the Human Resource Specialist, your supervisor, or any member of the Management Team.

Fire camp will be a Drug and Alcohol-Free workplace. Here are the rules:

From the Fire line Handbook, Chapter 6 – Common Responsibilities:

Non-prescription unlawful drugs and alcohol are not permitted at the incident. Possession or use of these substances will result in disciplinary action.

*Remember, **YOU** are responsible for your conduct and behavior.*

*****Our lives are not determined by what happens to us but by how we react to what happens, not by what life brings to us, but by the attitude we bring to life. A positive attitude causes a chain reaction of positive thoughts, events, and outcomes. It is a catalyst, a spark that creates extraordinary results.***

Janine Summy, Human Resource Specialist, 509-429-1206



Interagency Incident Management

MEDIA – The California State Penal Code Section 409.5(d) allows the news media to enter scenes of disaster, riot or civil disturbance. Properly identified members of the news media should not be restricted from entering locations specified within the code. However, this does not include crime scenes, private property and the news media may not interfere with incident operations. Please always treat the media with courtesy and respect and advise the Information Office if there are any issues.

PHOTOGRAPHS AND VIDEOS OF INCIDENT – Please refrain from posting incident related videos to your personal social media. It may be unsafe to shoot photos or video and a firefighter who is concentrating on a camera loses their situational awareness. When this happens it could reflect poorly on all that are attached to this incident.

Please email photo and video submissions to 2021.Caldor@firenet.gov

MAIL – If you need to send or receive mail, please see the mailing address below. Sending letters, cards to your loved ones, or mailing bills. Please stamp your mail and it will be taken to the post office for you. If you don't have a stamp, we will provide one.

Mailing address for the Caldor Fire:

**Caldor Fire Camp
Attention : (Your name & RO/Crew Name)
3680 Saddle Road
South Lake Tahoe, CA 96150**

FINANCE MESSAGE

Fire Name: Caldor Fire
Fire Number: CA-ENF-024030
Accounting Code: P5N8GM21
Email: 2021.caldor.finance@firenet.gov
Hotline: 530-330-5450

If you were originally ordered on a CALFIRE contract and have not submitted a VIPR contract and RO or received an EERA (Fed contract) – CONTACT FINANCE TODAY you might not get paid.

Finance Documents Needed upon “Check In” (If Not Already Submitted):

Please email these documents or scan the QR Code below, attach & submit.			
Agency Equipment/ Crews: <ul style="list-style-type: none"> • Manifest - showing employment type (GS or WG) or AD rates if applicable 	Overhead: <ul style="list-style-type: none"> • AD/Casual Hire Form • If regular Agency please ensure “GS” or “WG” is written on your first CTR 	Contract Equipment/ Contract Crews: <ul style="list-style-type: none"> • Agreement • Manifest • Resource Order • Inspections 	Cooperator: <ul style="list-style-type: none"> • Cooperative Agreement • Resource Order

Please submit your CTR/Shift Tickets using the QR code or email address below:

Don't Forget to put your RO # on your CTR/Shift Ticket – final travel CTR's must be signed by supervisor on incident - Thank You

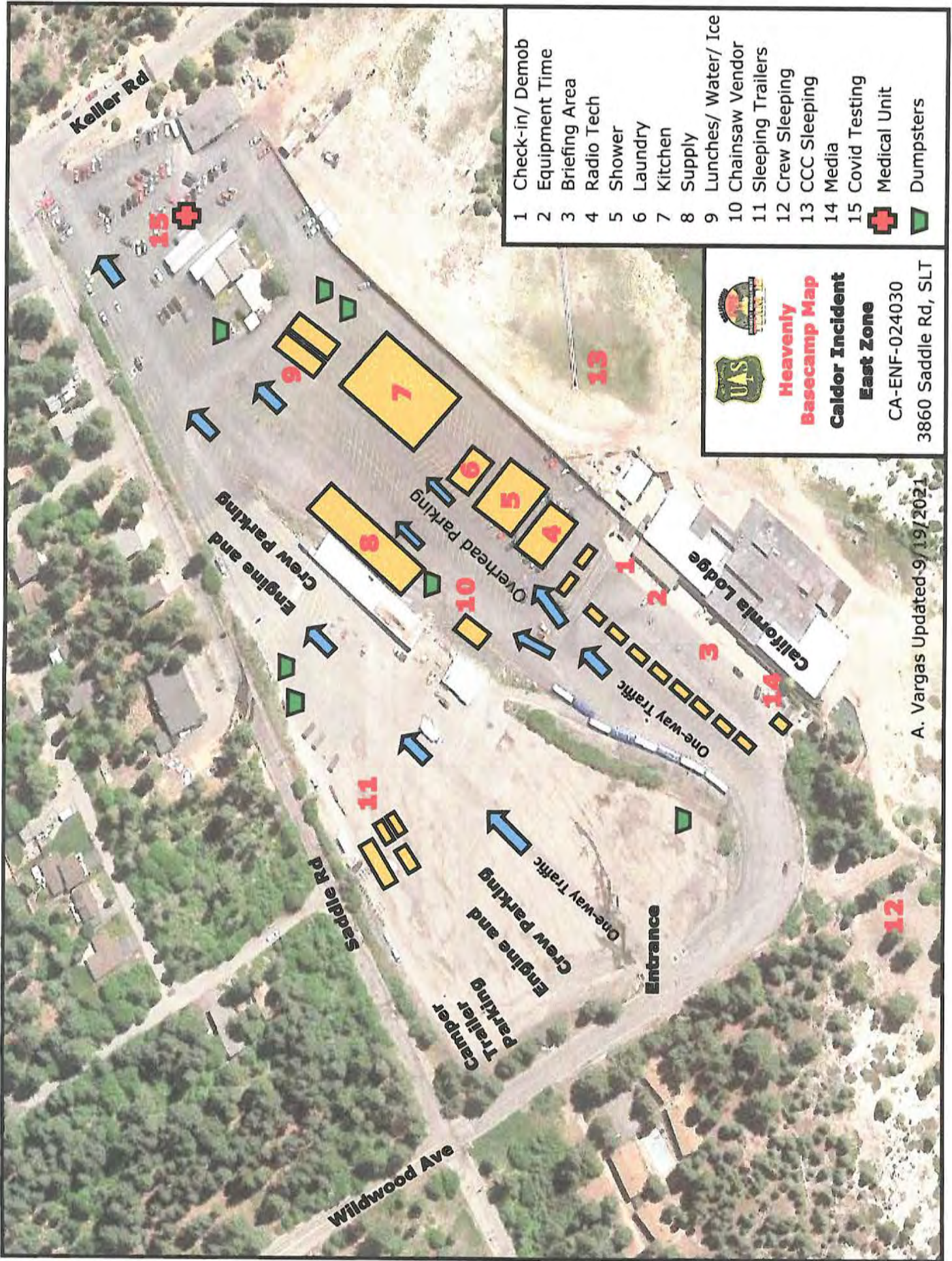
Please Include the Word “Equipment” for Federal Contract Equipment or “Time” for Federal Overhead & Crews in the Subject Line of the Email





Date & Time Order was Placed			ORDER #	DIV	Location & Time For Delivery (DIV, LZ, DP, Lat/Long)		
1000 ft Hose Kit				Quantity Needed			
10 ea, 100' x 1 1/2" Hose; 10 ea 100' x 1" Hose; 10 ea 1 1/2" Gated Wyes; 10 ea 1 1/2" to 1" reducers; 10 ea 1" nozzels							
2000 FT Hose Kit				Quantity Needed			
20 ea, 100' x 1 1/2" Hose; 20 ea 100' x 1" Hose; 20 ea 1 1/2" Gated Wyes; 20 ea 1 1/2" to 1" reducers; 20 ea 1" nozzels							
3000 FT Hose Kit				Quantity Needed			
30 ea, 100' x 1 1/2" Hose; 30 ea 100' x 1" Hose; 30 ea 1 1/2" Gated Wyes; 30 ea 1 1/2" to 1" reducers; 30 ea 1" nozzels							
FULL HOSE KIT				HALF HOSE KIT			
1 1/2" Hose (5000 Ft), 1" Hose (2000 Ft), 3/4" Hose (2000 Ft), 1 1/2" Gated Wyes (25 ea), 3/4 Wyes (25 ea), 1 1/2" to 1" Reducers (25 ea), 1" to 3/4" Reducers (25 ea), 1 1/2" KK Nozzels (25 ea), 1" KK Nozzels (25 ea), 3/4" Nozzels (25 ea), Hose Clamps (10 ea), Class A Foam (10 Gallons)				1 1/2" Hose (2500 Ft), 1" Hose (1000 Ft), 3/4" Hose (1000 Ft), 1 1/2" Gated Wyes (12 ea), 3/4 Wyes (12 ea), 1 1/2" to 1" Reducers (12 ea), 1" to 3/4" Reducers (12 ea), 1 1/2" KK Nozzels (12 ea), 1" KK Nozzels (12 ea), 3/4" Nozzels (12 ea), Hose Clamps (5 ea), Class A Foam (10 Gallons)			
Total Full Hose Kits Needed:				Total Half Hose Kits Needed:			
Item	NFES	Description	Amount	Item	NFES	Description	Amount
MISC ITEMS				29	000909	Backpack Pump	
1	000030	BATTERY - SIZE AA		30			
2	000033	BATTERY - SIZE D		31			
3	007000	BATTERY - AAA,		32			
4	000856	DOUBLE MALE 1 1/2"		33			
5	000857	DOUBLE FEMALE 1 1/2"		34			
6	000916	DOUBLE MALE, 1"		Hose Kit Accessories			
7	000710	DOUBLE FEMALE, 1"		7	000006	ADAPTER -1 1/2" NH-F, - 1 1/2" NPSH-M	
8	000416	INCREASER - 1" TO 1 1/2"		8	000007	ADAPTER -1 1/2" NPSH-F, - 1 1/2" NH-M	
9	002235	INCREASER - 3/4" TO 1"		9	000693	BERM - PORTABLE PUMP	
10	000733	REDUCER - 1" TO 3/4"		10	000046	CLAMP - HOSE,	
11	000010	REDUCER - 1 1/2" to 1"		11	000856	DOUBLE MALE 1 1/2"	
12	001220	HOSE -HARDLINE		12	000857	DOUBLE FEMALE 1 1/2"	
13	000932	HOSE - 1"		13	000115	HOSE - SUCTION, 1 1/2" NH X 10'	
14	000933	HOSE - 1 1/2"		14	000137	NOZZLE - PLASTIC, 60 GPM, 1 1/2"	
15	001016	HOSE - 3/4"		15	000138	NOZZLE - PLASTIC, 35 GPM, 1"	
16	001082	NOZZLE - KK 1 1/2"		16	000024	NOZZLE - TWIN TIP	
17	001081	NOZZLE - KK, 1"		17	000744	PACKSACK - WATERPROOF,	
18	000136	NOZZLE - 3/4"		18	000417	REDUCER -2" NPSH-F - 1 1/2" NH-M	
19	000230	TEE - 1 1/2" 1 1/2" X 1"		19	000145	PRIMER - HAND, MARK III	
20	001809	TEE - 1" x 1" X 3/4"		20	000114	SUCTION HOSE 1 1/2" NH X 3'	
21	000731	TEE - HOSELINE 1 1/2"		21	000212	VALVE - FOOT, 1 1/2"	
22	002240	TEE - HOSELINE, 1"		22	000228	VALVE - CHECK & BLEEDER 1 1/2"	
23	001201	VALVE - SHUT OFF, 1"		23	000229	VALVE - P. RELIEF, 1 1/2"	
24	001207	VALVE - SHUT OFF, 1 1/2"		24	000235	WRENCH - SPANNER	
25	000228	VALVE - CHECK 1 1/2"		25	000231	WYE, GATED, 1 1/2"	
26	000835	VALVE - SHUT OFF, 3/4" NH		26	000218	MRK3 GAS CAN	
27	000259	WYE, GATED, 1"		27	000113	FUEL LINE ASSEMBLY - 1/4" X 5'	
28	000904	WYE, GATED, 3/4"		28	001145	FOAM CLASS A	
<p>Type 1 Spike Kit (1 Crew 24 hr's), 80 Gallons of Water, 8 Case of Gatorade, 6 Case of MRE's, 40 Sack Lunches, 10 Gallons of Gasoline (safety can-NOT mixed, tagged), 40oz 50:1 2 cycle mix, 1 Yellow tag "MIX", 4 gallons Bar and Chain oil, 1 Bathroom in a Box (5 ea TP, 2 Gold Bond, 25 bath in a bag), 1 Box of Trash bags, 2 cases AA Batteries, 2 Rolls fiber tape, 1 Roll of Visqueen, 22 Sleeping Bags.</p> <p>Type 2 Spike Kit (> 1 night – max 3 night) (1 Crew 24 hr's), Type 1 kit from above plus: 20 Pair of work gloves, Basic Medical supplies (Line medic / EMT), Crew Red Bags, 22 Sleeping Pads.</p>							
<p>How to order: If you have 3 crews "spiking out" for 1 night then order 3 Type 1 Spike Kits, to be delivered to the DP / Sling site by XXXX hrs. **Add Firing Equipment as needed**</p>							



*Interagency Incident
Management*

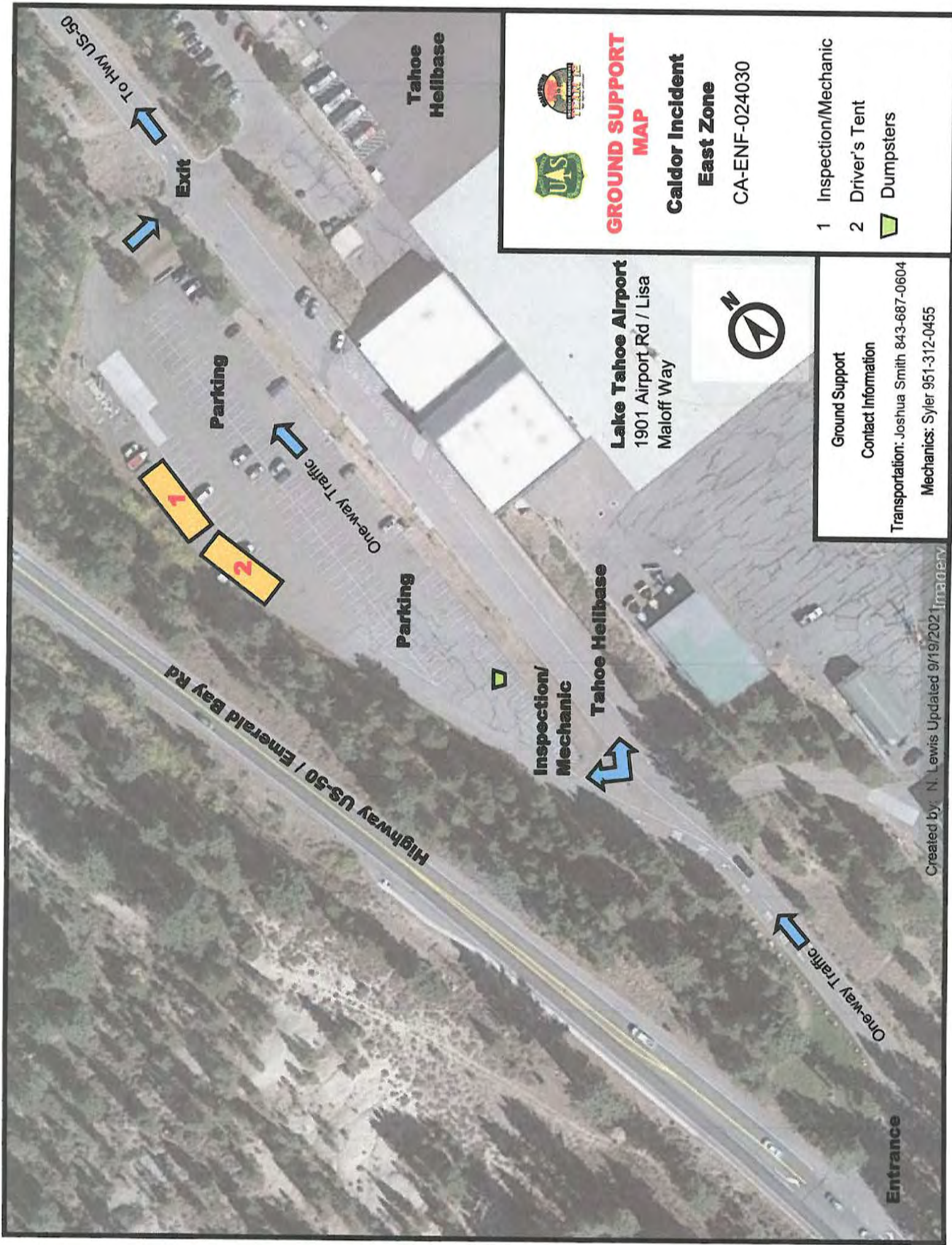


- 1 Check-in/ Demob
 - 2 Equipment Time
 - 3 Briefing Area
 - 4 Radio Tech
 - 5 Shower
 - 6 Laundry
 - 7 Kitchen
 - 8 Supply
 - 9 Lunches/ Water/ Ice
 - 10 Chainsaw Vendor
 - 11 Sleeping Trailers
 - 12 Crew Sleeping
 - 13 CCC Sleeping
 - 14 Media
 - 15 Covid Testing
-  Medical Unit
 Dumpsters



Heavenly Basecamp Map
Caldor Incident
East Zone
 CA-ENF-024030
 3860 Saddle Rd, SLT


A. Vargas Updated 9/19/2021



**GROUND SUPPORT
MAP**

**Caldor Incident
East Zone**

CA-ENF-024030

- 1 Inspection/Mechanic
- 2 Driver's Tent
-  Dumpsters

Lake Tahoe Airport
1901 Airport Rd / Lisa
Maloff Way



Ground Support
Contact Information

Transportation: Joshua Smith 843-687-0604

Mechanics: Syler 951-312-0455

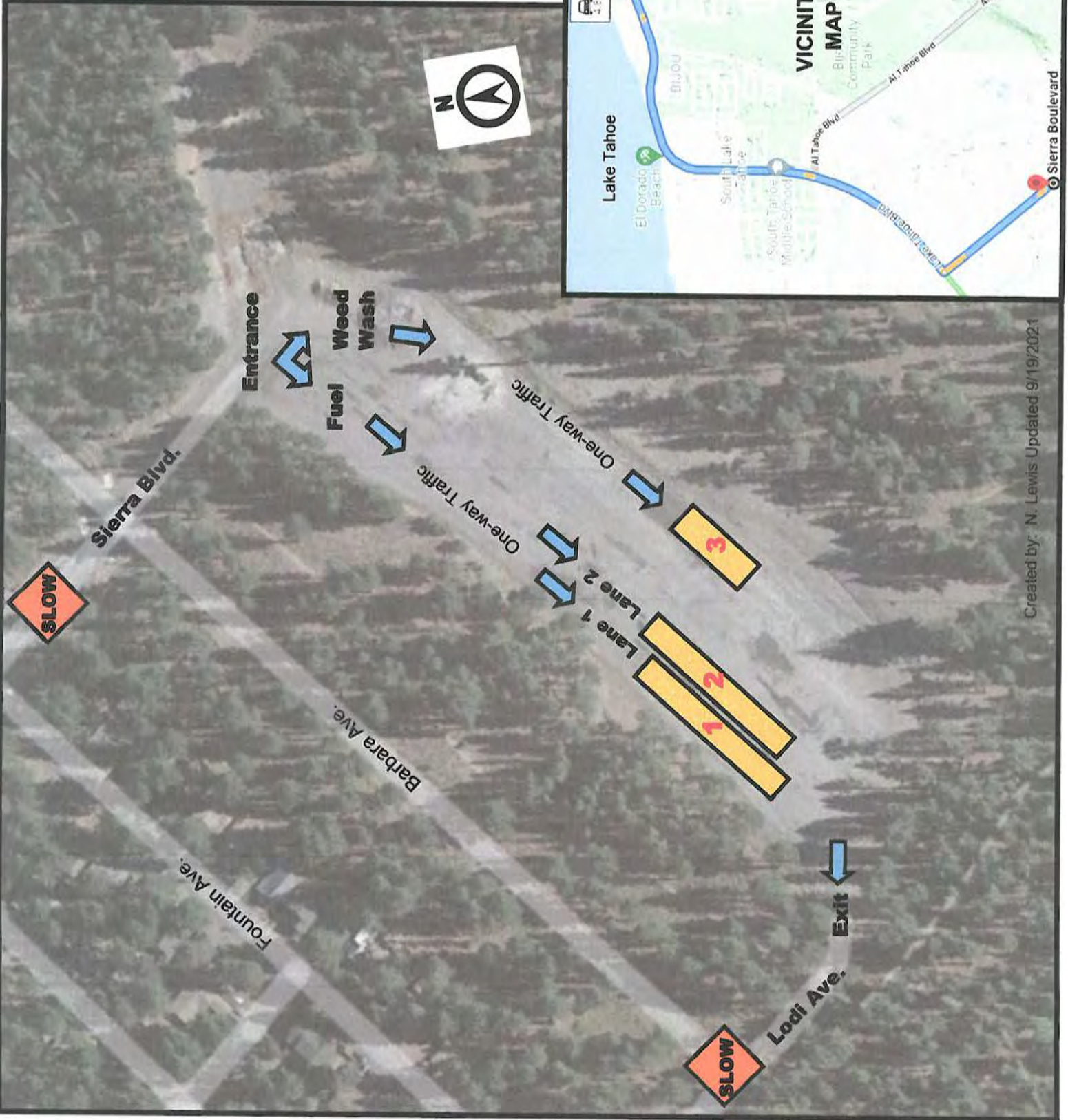
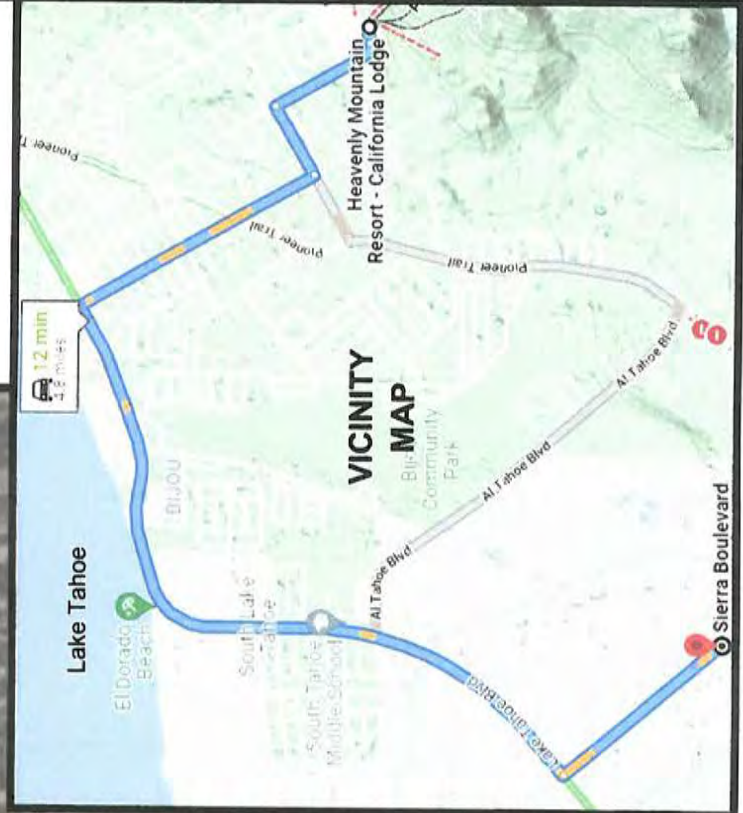


WEED WASH AND REFUEL MAP

Caldor Incident East Zone

CA-ENF-024030

- 1 Fuel Tender Lane 1
- 2 Fuel Tender Lane 2
- 3 Weed Wash





Eldorado Base Camp Caldor Incident



CA-ENF-024030
100 Placerville Dr. Placerville CA 95667

- 1 Fuel
- 2 Incident Commander-Planning
- 3 Logistics-Finance-PIO
- 4 Supply

- Medical Unit
- Covid Testing
- Dumpster

J.Mota Updated 09/26/2021



VIRTUAL DEMOBILIZATION

Please follow the steps below in order:

1. Scan the QR code and select the “REMOTE DEMOB” item.
PLEASE DO NOT complete this step more than 12-hours prior to your demobilization
2. Complete the questionnaire
3. Go to Weed Wash if your vehicle has driven on the Fire-line
4. Go to Ground Support for your post-inspection
5. Return items checked out from Supply
6. Return any items checked out in Communication
7. Go to Finance at the scheduled time to close out your CTR/Shift Tickets
8. Call DEMOB at 530-584-9415 to finalize your travel times.

PLEASE NOTE: If you have any problems contact (DEMOB UNIT LEADER) either by phone at 530-584-9415 or at DEMOB window.



UNIT LOG (ICS 214)

1. Incident Name: <div style="text-align: center;">CALDOR</div>	2. Operational Period: Date From: <u>9/29/21</u> Date To: <u>9/30/21</u> Time From: <u>0700</u> Time To: <u>0700</u>
--	--

3. Unit Name/Designators	4. Unit Leader (Name and ICS Position)
---------------------------------	---

5. Personnel Assigned/Designators		
NAME	ICS POSITION	HOME BASE

6. Activity Log (Continue on Reverse)	
TIME	MAJOR EVENTS

7. Prepared By:	Date/Time:	NIMS IAP
-----------------	------------	----------