

INCIDENT ACTION PLAN

CALDOR INCIDENT



CA-ENF-024030
P5N8GM21



OPERATIONAL PERIOD




10/11/2021 0700
to
10/12/2021 0700



*Interagency Incident
Management*

ORGANIZATION ASSIGNMENT LIST (ICS 203)

1. Incident Name: CALDOR		2. Operational Period: Date From: 10/11/2021		Date To: 10/12/2021	
		Time From: 0700		Time To: 0700	
3. Incident Commander(s) and Command Staff:			7. Operation Section:		
IC Mike Wakoski		Operations	Matt Ahearn		
		Deputy Ops	Rick Marinelli/Todd McDivitt		
Safety Officer Kevin Southerland		Night Operations	Jason Wingard (T)		
Information Officer Marc Peebles/Jay Nichols					
Liaison Officer Jack Wise					
		Branch	I	Jamie Rickard (T)	
		Division/Group	G / T / W	Reggie Brown (T)	
Agency/Organization	Name	Division/Group	MET Repair	David McIlhargie/Paul Naman	
El Dorado NF - AA	Jeff Marsolais	Division/Group	Wright Lake Repair	Mark Johnson	
El Dorado NF - AA Rep.	Jon Regelbrugge/Scot Rogers	Division/Group	Plummer Ridge Repair	Jesse Plummer	
Lake Tahoe TMU - AA	Jonathan Cook-Fisher	Division/Group			
Humboldt Toiyabe NF - AA	Jon Stansfield	Branch	III	TBD	
Cal Fire Arep	Mike Blankenheim	Division/Group	I / M	Travis Bills	
Cal OES	Kit Bailey (V)	Division/Group	O / P	Ted King	
Eldorado SO	Deputy Greg Almos	Division/Group	Q / R	Ron Gregor	
Sierra Pacific Ind.	Tim Tate	Division/Group	Meyers Repair	Shane Glaze	
PG&E	Mike Webb	Division/Group	Kirkwood Repair	N.Arellano/B. Hunter (T)/ M. Cachero	
Amador County SO	LT. Jason Navarre	Division/Group	Cody Meadows Repair	Aaron Schumacher	
CHP	LT. Rick Hatfield	Branch	Night	Jason Wingard	
Cal Trans	Greg Duffy	Division/Group	Night	Jeff Corser (T)	
AT&T	Kevan Young	Division/Group			
BLM	Jerry Martinez	Division/Group			
Lake Valley Fire	Brad Zlendick	Division/Group			
COVID Advisor	Greg Flory/Kayla Nimmo	Division/Group			
Lead READ	Jen House/Emma Williams	Division/Group			
		Division/Group			
5. Planning Section:					
Chief	Daniel Michael	Branch			
Deputy	Phillip Dye (T)	Division/Group			
Resource Unit	Jeremy Owens/Dylan Dabasinskas (T)	Division/Group			
Situation Unit	M.Campbell/M.Snyder/Q. Leba (T)/R. Striplin (T)	Division/Group			
Documentation Unit	Nancy Nordensten/LT Pratt	Division/Group			
SCKN	M. Begines (T)/ A. Lutz(T) / J. Willis(T)	Division/Group			
FBAN	Teresa Riesenhuber	Division/Group			
IMET	Derek Williams	Division/Group			
Human Resources	Linda Overton/Jon Tipton (T)	Division/Group			
Training Specialist	Derek Parker/Morgan Madruga (T)(V)	Air Operations Branch		Director: L. Alarcon/ T. Visser	
ITSS	Andrew Lopez		Air Support Group Supervisor	Randy Carter/Heather Wonenberg (T)	
			Air Tactical Group Supervisor	Bryan Rosenow	
			Helibase Manager	Cammie Roy	
6. Logistics Section					
Chief	Jack Van Lear/Bill Crews/ Bryan Scott (T)				
Supply Unit	Bradley Walker (T)				
Facilities Unit	Brian Wilbond/Matt Ambrose (T)	8. Finance/Administration Section:			
Food Unit	Prawitt Hess	Chief	Vicki Wilson/Stephen Greene (T)		
Communications Unit	Terry Brinson	Time Unit	Jessica Luna		
Medical Unit	Kevin Palm	Cost Unit	Vera Westmoland (V)/Christie Camacho (T)		
BCMG	Javier Parra (T)	Comp/Claims Unit	Janna Masi		
Security	Nathan Welker	EQTR	Michelle Bletcher		
Ground Support	Jimmy Brown				
Prepared By: Name:	Phil Dye	Position/Title:	PSC2(T)	Signature: 	
ICS 203		Date/Time:	10/10/2021 2300 hours		



Fire Weather Forecast

FORECAST NO: 54
PREDICTION FOR: Monday-Monday Night
DATE: October 11th, 2021
FORECAST ISSUED: 1900 October 10th, 2021

Fire: Caldor
UNIT: USFS Eldorado NF
Incident Meteorologist: Derek Williams
Signed: *Derek Williams*

RED FLAG WARNING IN EFFECT THROUGH TUESDAY FOR STRONG NORTHEAST WINDS

WEATHER DISCUSSION: A strong cold front will move through the area today resulting in increasing northeast winds and chances for snow showers in the morning. Snow will end later this morning with less than one inch expected and will be confined to areas east of the Sierra crest. Clouds will clear somewhat during the afternoon. Stronger northeast winds are expected to develop overnight into early Tuesday morning with ridgetop gusts around 45 mph. Wind chills today will be in the 20s and 30s. Very cold temperatures tonight across eastern portions of the fire are expected tonight with lows in the lower teens and wind chills in the 10-15° range. Western portions of the fire will remain dry with relative humidity dropping into the 20s this afternoon.

TODAY:

SKY/WEATHER: Cold and blustery with morning snow showers along and east of Sierra crest.

MAX TEMP: Below 5000 feet: 46-52° **MIN RH:** Below 5000 feet: 22-27%
Above 5000 feet: 30-40° Above 5000 feet: 35-45%

WIND CHILL: Below 5000 feet: 25-35°
Above 5000 feet: 5-15°

CHC WTG RAIN: 10% **LAL:** 1

WINDS: **Slope/Valley:** Increasing northeast winds through the day to 15-20 mph with gusts to 25 mph.
(20 feet) **Ridgetop:** Northeast 10-20 mph in the morning increasing to 20-25 mph with gusts to 35 mph late afternoon.

HAINES: 3 (Low).
MIXING HEIGHT: Rising to 10000 feet by 1500.
INVERSION: Little to no morning inversion.

TONIGHT:

WEATHER: Windy and cold! Diminishing clouds.

MIN TEMP: East Valleys: Around 10 **MAX RH:** Below 5000 feet: 45-50%
Below 5000 feet: 30-35° Above 5000 feet: 75-85%
Above 5000 feet: 15-22°

WIND CHILL: Below 5000 feet: 20-30°
Above 5000 feet: -5 to +10°

CHC WTG RAIN: 0% **LAL:** 1

WINDS: **Slope/Valley:** Northeast 10-15 mph with gusts to 20-25 mph.
(20 FEET) **Ridgetops:** Northeast winds increasing to 30-40 mph with gusts to 40-50 mph by early Tuesday morning.

INVERSION: Weak inversion developing.

EXTENDED OUTLOOK: Tuesday through Saturday: Gusty northeast winds will gradually diminish Tuesday after a very cold start to the day. A gradual warmup beginning Wednesday, drier conditions and lighter winds overall are expected for the remainder of the week. High temperatures are expected to be back into the 70s by Saturday with mostly clear skies each day.



Please text observations to 208-252-2291

Scan QR for Weather Observations

FIRE BEHAVIOR FORECAST

FORECAST NUMBER: 23	TYPE OF FIRE: Wildland
FIRE NAME: Caldor	OPERATIONAL PERIOD: October 11 th
DATE ISSUED: October 10, 2021	TIME ISSUED: 1600 Hours
UNIT: CA Eldorado National Forest/Lake Tahoe Basin Management Unit	SIGNED: /s/ Teresa Riesenhuber FBAN

INPUTS

WEATHER SUMMARY: *See detailed Fire Weather Forecast in IAP*
-- Red Flag Warning for west Caldor fire area --

FUELS:

All fuel classes (live, dead, fine, heavy) continue to be very dry despite the recent moisture events and will remain near historic lows for the remainder of the incident or until a significant precipitation event occurs.

OUTPUT

GENERAL:

- Rain and snow may reduce chance of rapid rates of spread, *HOWEVER* the winds could overcome the effects of moisture and cause unexpected spread rates and potential for spotting.
- Recently fallen fine fuels will carry fire across containment lines that have not been raked in recent days.
- Large heavy fuels and snags continue to burn down, and heat may be hidden beneath the deep ash. High winds could reveal hidden smokes and become more visible as the day progresses.
- Spotting potential increases as wind speeds increase. POI up to 60% is possible with spotting distances up to ½ mile when winds are above 30 mph.

SPECIFIC:

Branch 1- Surface fire spread should be confined to exposed areas on the west side of branch. Burn down heavy fuels is possible.

Branch 3 – Pockets of interior heat could flare up in the winds. Be on lookout for spotting. This will be more pronounced on the western side of the branch in the higher elevations.

Divisions India and Mike: Isolated smoke and burn down of fuels will continue. Active burning may increase in the highest winds, with potential for spotting, but should stay within the rocky barrier.

Division Quebec and Romeo: Burn down of interior islands will continue. Active burning may increase in the highest winds, with potential for spotting up to ½ mile in winds above 30 mph and closer to ¼ mile in winds less than 25 mph.

Divisions Oscar and Papa: Isolated smokes from ground fire could show with increased winds.

Nightshift: Potential for increased fire behavior in the overnight hours due to high winds. These winds could overcome the RH expected during the overnight hours. Fire that was smoldering may become active with some torching.

AIR OPERATIONS: Adverse weather and increased winds may impact aviation operations.

SAFETY

Fuels, weather, and topography all play a role in fire behavior.
Consider the risk of a given tactic weighed against possible fire behavior.

Fire and COVID-19 Briefing Checklist

1. Incident Name:

CALDOR

2. Operational Period: Date From:

10/11/2021

Date To:

10/12/2021

Time From:

0700

Time To:

0700

FIRE and COVID-19 Briefing Checklist

Self-Awareness / Screening

- Immediately separate yourself from others.
 - o Cough more than expected
 - o Shortness of breath or difficulty breathing
 - o New loss of taste or smell
 - o Fever o Sore throat
 - o Chills o Muscle pain
- Review and follow crew and division plans to isolate, triage, and transport symptomatic personnel.

Hygiene on the Fireline

- Properly wash or sanitize your hands often, especially before and after eating or entering a public place, and after coughing or sneezing.
- Avoid handshakes and communal use items.
- Maintain a supply of hand sanitizer and hand wipes. Inform supervisor of needed resupply.
- Disinfect high touch surfaces often:
 - o Radios, phones, doors, pumps, fuel cans, etc.

Social Distancing and Protective Equipment

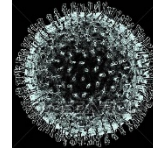
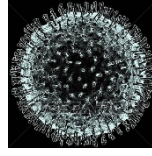
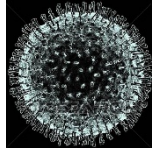
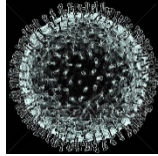
- Initiate, practice, and remind others of social distancing.
- Conduct briefings and conversations outdoors and at least 6 feet apart.
- Utilize face coverings as a tool when practical.
- Clean or replace dirty face coverings, equipment, and PPE.

Communications

- Face coverings and social distancing complicate communications.
 - o Ensure effectiveness sender/receiver messaging.

Protect yourself, your crew, and your camp!

Find more information: <https://www.nwccg.gov/coronavirus>.



KEY COVID-19 MESSAGES

- We continue to see positive COVID-19 cases every week.
- Masks are required in all workspaces and common areas. This includes buildings, trailers, chow line (even for line lunches), laundry, showers, supply cache, and any other areas that require masks (indoors or outdoors).

HOW COVID-19 SPREADS

- Covid-19 is transmitted primarily by respiratory droplets or mucous. When not wearing a mask, coughs, sneezes, speaking, and laughing create considerable unseen droplets in the air that can harbor the virus. The primary method of spread is by inhaling or having these droplets settle in the mucous membranes of the nose or eyes.
- The chances of spread via air droplets can be reduced in the outdoors depending on wind and humidity.
- Smoke poses an increased risk of infection. Exposure to smoke irritates the airway and lungs, changing the body's immune response, and can result in more severe illness in persons infected by COVID-19.
- Virus particles on surfaces are far less likely to cause infection unless a person is in a confined space and in immediate contact with an infected person for an extended time. Outdoors, the virus cannot survive long on surfaces due to sun exposure, air currents and changing humidity levels.

HOW TO STOP COVID-19

- Complete your COVID-19 self-assessment questionnaire at the start of your shift
- Properly wear a mask over both your nose and mouth
- Social distance by staying 6 ft or more apart
- Wash your hands often and/or use hand sanitizer
- Clean surfaces shared by others (tables, computers, etc.)
- Recommended testing for COVID-19 every 72 hours
- Get vaccinated. *Vaccines are safe, effective and prevent infection and/or severe disease.*

Any questions? Contact the COVID Advisors:

East side: Tchelet Segev - Ph: 907-240-8414

West side: Michael Wydysch - Ph: 716-430-8004

Or @ covidadvisor@eastcaldor@gmail.com

California Wildland Fire Coordinating Group

Framework for Mandatory COVID Testing on Federal Fire Incidents in California

Due to the risk of spread of COVID-19 to individual fire personnel and modules, as well as the overall impact on firefighting capacity, the federal leadership of the California Wildland Fire Coordinating Group (CWCG) have decided to move forward with the intent of mandatory testing on all federal fire incidents in California, specifically type 1 and 2 wildfire incidents when logistically possible (e.g. personnel to support, testing available). This intention applies to all federal employees and federal contractors regardless of vaccination status and will be voluntary for partners and cooperators involved in a federal fire incident.

To date, the Department of Agriculture, Forest Service, Pacific Southwest Region, COVID-19 Emergency Response Team (CERT) implemented two mandatory pilot testing programs in California. The first pilot program was during the McFarland Fire on the Shasta-Trinity National Forest. The testing service was provided through a contract. The second pilot program was on the French Fire during unified command between the Bureau of Land Management and the Sequoia National Forest. Cal OES provided the testing service. These pilot programs provided many lessons to assist with more effective implementation on other fire incidents.

To implement this intent the CERT and a Point of Contact (POC) from each of the following Department of the Interior (DOI) agencies: Bureau of Indian Affairs, Bureau of Land Management, Fish and Wildlife Service and the National Park Service will coordinate and collaborate.

It is recognized that testing in and of itself is not a silver bullet, but it is an important tool in the suite of COVID mitigations to protect fire personnel, modules, and their families and friends when personnel return home from fire incidents. With increasing COVID cases over the past few months, and continued fire activity expected in the weeks and months ahead, we have decided this is a necessary tool until vaccine requirements for the federal workforce are fully implemented.

Mandatory Testing Intent & Framework

- Applies to all federal employees and federal contractors on type 1 and 2 wildfire incidents in California, regardless of vaccination status.
- Testing will be provided for partners and cooperators that volunteer or request testing, if testing capacity is available.
- The requirement for testing will be included in the resource order for those resources identified as available to fill orders.
- Refusal of COVID testing on incidents will be handled on a case-by-case basis by the employee's agency or the hiring agency of the federal contractor with participation on the incident not occurring until a resolution is identified.
- If there are logistical challenges (e.g. personnel support, testing availability) the CERT and DOI POCs will attempt to implement this intent in the following priority order: (1) test individuals upon arrival to an incident, (2) test individuals upon demobilization from an incident, (3) test individuals that are already assigned to an ongoing incident at frequencies recommended by the Centers for Disease Control and Prevention (CDC).

California Wildland Fire Coordinating Group
Framework for Mandatory COVID Testing on Federal Fire Incident in California

Signature Page

JENNIFER
EBERLIEN

Digitally signed by JENNIFER
EBERLIEN
Date: 2021.09.21 15:37:05
-07'00'

U. S. Forest Service
Regional Forester

AMY
DUTSCHKE

Digitally signed by
AMY DUTSCHKE
Date: 2021.09.23
09:09:25 -07'00'

Bureau of Indian Affairs
Regional Director

KAREN
MOURITSEN

Digitally signed by
KAREN MOURITSEN
Date: 2021.09.23
12:04:04 -07'00'

Bureau of Land Management
State Director

PRISCILLA
WHEELER

Digitally signed by PRISCILLA
WHEELER
Date: 2021.09.23 12:54:02 -07'00'

U. S. Fish and Wildlife Service
Regional Director

CINDY
ORLANDO
National Park Service
Regional Director

Digitally signed by CINDY
ORLANDO
Date: 2021.09.28 11:28:17
-07'00'

HEALTH AND SAFETY MESSAGE

INCIDENT: CALDOR FIRE

DATE: 10/11-12/2021

TIME: 0700-0700

Major Hazards and Risks: Driving in SNOW, Vehicle Traffic, Hazard Trees, Cold Weather, Personal Hygiene, Bears, and Complacency!

Fire Order of the Day– *Keep informed on Fire Weather Conditions and Forecasts*



HYPOTHERMIA

Symptoms of Hypothermia include:

- Slurred speech.
- Weakness and loss of coordination.
- Confusion.
- Irrational behavior.
- Uncontrollable shivering (although, at extremely low body temperatures, shivering may stop).
- Pale and cold skin.
- Drowsiness – especially in more severe stages.
- Slowed breathing or heart rate.

Go to
<https://www.nwcg.gov/committee/6mfs/hypothermia> for
more info.

WATCH OUT SITUATION:
BLACK ICE & SNOW

Safety Tips for Driving on Black Ice

- Drive Steadily and Slowly
- Don't Use Your Brakes
- Don't Panic, Don't jerk your steering wheel.
- Understand What to Do During a Skid
- Be Aware of What Will Not Help



If you recognize hypothermia, take the following steps:

- Move the patient to shelter.
- Remove wet clothes and replace them with warm, dry garments.
- If the victim is alert, give them food and warm liquids to drink.

INCIDENT SAFETY ANALYSIS 215a

Caldor Fire / CA-ENF-024030 - Monday, October 11, 2021

8. Location	9. Hazard	6. Control or Abatement Action (Engineering, Administrative, PPE, Avoidance, Education, etc)
All	Hazard Trees	<ul style="list-style-type: none"> ~ Follow "Hazard Tree Safety" guidelines, IRPG page 22. ~ Post lookouts, or use a spotter in mop-up areas with personnel. ~ Don't park vehicles or take breaks in high concentrations of hazard trees. ~ Establish trigger points for disengagement during high wind events. ~ Remember that the hazard zone extends a minimum of 2 1/2 tree heights.
All	Driving & Traffic	<ul style="list-style-type: none"> ~ Practice "Defensive Driving" techniques traveling on all roads and city streets. ~ Use spotters & Honk horn to alert personnel when backing. ~ Follow Driving LCES (Lights, Chock blocks, Emergency brake, Seat belts). ~ Always use headlights. ~ Yield to pedestrians and bicycles. ~ Observe posted speed limits. ~ Use the 3 second rule for following distance when driving. ~ Use chock blocks, turn wheels into hill. ~ Avoid distractions (eating, cell phones, radio). ~ Ensure that windshields are kept clean of dust and bugs. ~ Refer to "Smoke and Transportation Safety" IRPG Pg 31 ~ Refer to "Roadside Response Safety" IRPG Pg 26
All	Chain Saw Operations	<ul style="list-style-type: none"> ~ Follow "Hazard Tree Safety" guidelines, IRPG Pg 22 ~ Follow "Procedural Felling Operations" IRPG Pg 85. ~ Look up, Look down, Look around for hazard tree indicators. ~ Only fell and buck trees within your expertise, and training. ~ Do not fall trees during high wind events. ~ Ensure proper use of all required PPE.
All	Communications	<ul style="list-style-type: none"> ~ Maintain communication with aviation resources, and suppression organization. ~ Ensure all know frequency and protocol for contacting resources. ~ Utilize the ICS 205. ~ Utilize human repeaters when working in dead spots.
All	Fireline Hazards	<ul style="list-style-type: none"> ~ Refer to "Fireline Location" considerations, IRPG Pg 84 ~ Do not work directly above or below personnel during firing and mop-up operations. ~ Watch for falling and rolling debris on steep slopes. ~ Alert crew personnel of rolling debris by yelling to affected individuals. ~ Position debris that could roll vertically on slope. ~ Avoid stepping over debris that could roll by walking around object. ~ Avoid radiant heat by wearing appropriate PPE correctly. ~ Use correct tool for task assigned. ~ Flag and isolate all HAZMAT and alert all personnel working in Division. ~ Follow WUI recommendations, IRPG Pg 12.
All	Mop-up & Rehab	<ul style="list-style-type: none"> ~ Do not work above or below personnel during rehab/mop-up operations. ~ Alert crew personnel of rolling debris by yelling to affected individuals. ~ Position debris that could roll vertically on slope. ~ Wear eye protection.
All	Helicopter Operations	<ul style="list-style-type: none"> ~ Ensure positive communication with all air resources. ~ Don't plan on air resources for medical transport or resupply. ~ Follow "Aviation Watch-Out Situations" IRPG Pg 46. ~ Refer to "Directing Bucket or Retardant Drops" IRPG Pg 58 . ~ Refer to "Aircraft Mishap Response Procedure" IRPG Pg 62. ~ Stay clear of all bucket drops when suppression actions are in place and allow 1 minute prior to re-entry. ~ Monitor A-G communications.

INCIDENT SAFETY ANALYSIS 215a

All	Heat Related Illness (HRI)& Dehydration	<ul style="list-style-type: none"> ~ Refer to Heat Related Illness information, IRPG Pg 109 ~ Drink Fluids throughout operational period (6-8 qts/shift). ~ Maintain water/electrolyte ratio of 3 to 1. ~ Carry extra water on line and cache water at drop points. ~ Take Frequent breaks, minimum of 10 minutes every hour. ~ Allow out of area resources time to acclimatize before expecting peak performance. ~ Recognize symptoms of HEAT RELATED ILLNESS which include. <ul style="list-style-type: none"> o Lack of energy o Headaches, dizziness o Lack of rest o No hunger, poor eating habits o Hot skin, and lack of sweating
All	Heavy Equipment Operations	<ul style="list-style-type: none"> ~ Refer to "Working with Heavy Equipment" IRPG Pg 86 ~ Ensure communications are established with operators. ~ Use hand signals if other communications are unavailable. ~ Maintain a 50'-100' exclusion area around equipment and increase it to 1 1/2 times tree height when in timber. ~ Use a spotter when backing. ~ Avoid working below heavy equipment.
All	Personal Hygiene	<ul style="list-style-type: none"> ~ COVID-19 is on the rise. ~ Don't share personal items such as water bottles communication devices and utensils. ~ Wash hands before meals, and after use of rest room facilities.
All	Injury & Medical Emergency	<ul style="list-style-type: none"> ~ COVID-19 is on the rise. ~ Conduct daily COVID screening, report any symptoms to Medical immediately, and isolate those that have been exposed. ~ Assist injured employee appropriate medical care. ~ Use EMT's on Division for initial care. ~ Follow "Emergency Medical Care" IRPG Pgs 105-118 ~ Follow procedures in Medical Plan, ICS 206 ~ Refer to "Planning for Medical Emergencies" IRPG Pg 2
All	Vehicle Operations in Inclement Weather	<p>COLD FRONT EXPECTED!</p> <ul style="list-style-type: none"> ~ Be alert for potential icy and muddy road surfaces. ~ Stay off secondary roads in icy/snowy/wet conditions. ~ Postpone nonemergent operations when roads are covered with snow or ice. ~ Send a scout to evaluate roads and work area prior to personnel engagement. ~ Avoid parking on soft shoulders along roads. ~ Increase following distance on slick road surfaces.
All	Unburned Area/Reburn Potential	<ul style="list-style-type: none"> ~ Monitor weather. ~ Base actions upon observed and predicted fire behavior. ~ LCES Checklist IRPG Pg 7. ~ Refer to "Look Up, Down and Around" IRPG Pg 3
All	Cold Weather	<ul style="list-style-type: none"> ~ Carry extra clothing to prevent hypothermia following shift. ~ Dry out gear each night for next day. ~ Watch footing on frozen ground. ~ Maintain personal hydration. ~ Monitor wind-chill and establish trigger points for disengagement. ~ Monitor personnel for indications of hypothermia. (refer to www.nwcg.gov/committee/6mfs/hypothermia)
All	ATV/UTV use	<ul style="list-style-type: none"> ~ Ensure equipment is inspected and safe to use. ~ Restrict UTV's to max width of 50" on ATV trails due to width and severe out sloped conditions. ~ Ensure operator is trained and certified to operate. ~ Ensure operator has proper PPE according to the Redbook and/or operator's agency requirements. ~ Question if it is mission critical.

INCIDENT SAFETY ANALYSIS 215a

All	Night Operations	<ul style="list-style-type: none"> ~ Maintain high visibility in work area and wear vest while in roadway. ~ Use glow sticks to mark hazards. ~ Ensure personnel have a personal light (headlamp). ~ Watch for signs of fatigue. ~ Take breaks away from areas of known hazard.
All	Power Utilities	<ul style="list-style-type: none"> ~ Refer to the IRPG page 24 for Power Line Safety. ~ Notify all personnel of down electrical lines. ~ Always treat downed wires as energized. ~ Identify and avoid high tension transmission lines. ~ Identify and avoid high pressure natural gas lines. ~ Identify and avoid damaged gas service near structures. ~ Be aware of utility restoration in your work area.
All	Steep Terrain & Rolling Debris	<ul style="list-style-type: none"> ~ Maintain 8'-10' spacing when working & walking. ~ Don't work above any personnel. ~ Be on the lookout for rolling rocks, debris, or burning material. ~ Evaluate necessity to send personnel in areas with limited access. ~ Post lookouts IRPG Pg 7
All	Unplanned Public Interaction	<ul style="list-style-type: none"> ~ Be alert to non-fire personnel in areas with suppression personnel. ~ All non-fire personnel will be escorted while on fireline. ~ Post lookouts to in areas with public to avoid conflicts with mission tasks. ~ Ensure sufficient security to restrict access to exclusion area.
All	Wildlife & Livestock	<ul style="list-style-type: none"> ~ Bear Habitat - on the line, in camp, and in town. ~ Refer to: USFS "Be Bear Aware". ~ Never approach bears or cubs - KEEP A SAFE DISTANCE - do not impose for sightseeing or photo taking purposes. ~ Bears are wild animals and can be unpredictable -- even dangerous. ~ While bears are attracted to any edible food, they also might try to feast on items we might not consider edible. ~ Prevent vehicle break-ins - ALWAYS REMOVE SCENTED ITEMS FROM YOUR VEHICLE - including items such as food wrappers, sunscreen, lip balm, hand lotion and air fresheners. ~ Be sure to always lock your vehicle and close the windows. ~ Keep in mind eating in the car leaves lingering food odors that attract bears. ~ Watch out for wildlife inside fire area and along roadways. ~ Clean up all food debris and BACKHAUL trash during each operational period.

ASSIGNMENT LIST (ICS 204 WF)

CONTROLLED UNCLASSIFIED
INFORMATION//BASIC

1. Incident Name:		2. Operational Period:				3. Branch		Division	
CALDOR		Date From: 10/11/21		Date To: 10/12/21		I		G / T / W	
		Time From: 0700		Time To: 0700					
4. Operations Personnel:						Page 1 of 1			
Operations Section Chief: Matt Ahearn			Night Ops: Jason Wingard (T)						
Branch Director: Jamie Rickard (T)			Deputy Ops: Rick Marinelli/Todd McDivitt						
Division/Group Supervisor: Reggie Brown (T)			Air Attack: Bryan Rosenow						
5. Resources Assigned:		** Resources Below in Bold are 12 Hour **							
Resource Identifier	ALS	LWD	Leader	Personnel	Request #	Hours	Reporting Location		
HC2 PATRICK PR12		10/13	DOMBI	20	C-50071	0700-1900	EL DORADO FAIR		
HC2 DIAMOND FIRE		10/13	ANDREWS-JORDAN	20	C-50074	0700-1900	EL DORADO FAIR		
HC2 NORTH PACIFIC 154		10/15	CISNEROS	20	C-50084	0700-1900	EL DORADO FAIR		
ENG3 MNF 34		10/22	COMBS	5	E-50461	0700-1900	EL DORADO FAIR		
ENG3 ROCKY MTN		10/16	STREHLE	3	E-50206	0700-1900	EL DORADO FAIR		
ENG6 BKF 664		10/13	YANDERS	4	E-50201	0700-1900	EL DORADO FAIR		
ENG6 SIX RIVERS		10/16	REESE	3	E-50411	0700-1900	EL DORADO FAIR		
ENG6 SAN LUIS		10/16	MAYER	4	E-50410	0700-1900	EL DORADO FAIR		
FMOD NORTH ZONE 1		10/18	LEE	2	O-50733	0700-1900	EL DORADO FAIR		
MEDIC 834	X	10/12	RHEA/SIMPSON	2	E-50374	0700-1900	EL DORADO FAIR		
EMPF LORDINO	X	10/17	LORDINO	1	E-50418	0700-1900	EL DORADO FAIR		
EMTF POTSWALD		10/23	POTSWALD	1	O-50420	0700-1900	EL DORADO FAIR		
SOF2 BARNHART		10/12	BARNHART	1	O-50660	0700-1900	EL DORADO FAIR		
SOFR KERR		10/19	KERR	1	O-50772	0700-1900	EL DORADO FAIR		
6. Work Assignments:									
TASK: Secure existing line and provide for tactical patrol within the Hwy 50 corridor. Coordinate with REAFs and mop up to the									
PURPOSE: Minimize any fire progression and ensure the safety of those working on the west side of Mormon Emigrant Trail									
END STATE: Fires edge in the division is controlled and escape is improbable									
7. Special Instructions:									
Backhaul trash, excess supplies and provide a location for accountable property									
Identify and coordinate the removal of hazard trees									
Resources need to report to El Dorado County Fairgrounds (100 Placerville Dr, Placerville, CA 95667) for briefing									
8. Communications									
Name	Ch	Function	Rx Freq	Rx Tone	Tx Freq	Tx Tone	Notes		
COMMAND SEE ICS 205	1	COMMAND							
NIFC T1	8	TACTICAL	168.0500N		168.0500N				
A/G CMD	12	A/G CMD	167.9500N		167.9500N				
CALCORD	15	COORDINATION	156.0750N	156.7	156.0750N	156.7			
GUARD 16	16	EMERGENCY	168.6250N		168.6250N	110.9			
9. Prepared by: Name: Jeremy Owens RESL									
Signature: <i>/s/ Jeremy Owens</i>									
ICS 204		Date/Time: 10/10/2021 2200				Personnel Count: 87			

ASSIGNMENT LIST (ICS 204 WF)

CONTROLLED UNCLASSIFIED
INFORMATION/BASIC

1. Incident Name:		2. Operational Period:				3. Branch		Division	
CALDOR		Date From: 10/11/21	Date To: 10/12/21			I		MET Repair	
		Time From: 0700	Time To: 0700						
4. Operations Personnel:									
Operations Section Chief: Matt Ahearn					Night Ops: Jason Wingard (T)				
Branch Director: Jamie Rickard (T)					Deputy Ops: Rick Marinelli/Todd McDivitt				
Division/Group Supervisor: David McIlhargie/Paul Naman					Air Attack: Bryan Rosenow				
5. Resources Assigned:									
** Resources Below in Bold are 12 Hour **									
Resource Identifier	ALS	LWD	Leader	Personnel	Request #	Hours	Reporting Location		
HC1 EL DORADO IHC		10/11	STRAHAN	20	C-50101	0700-1900	EL DORADO FAIR		
WTS2 JOHN RYAN		10/20	MARTIN	1	E-50432	0700-1900	EL DORADO FAIR		
DOZ2 KIT CONTRACTING		10/23	BARNEY	2	E-50456	0700-1900	EL DORADO FAIR		
SKD SIERRA FOREST 1		10/20	MARTIN	1	E-704	0700-1900	EL DORADO FAIR		
SKD SIERRA FOREST 2		10/20	J. WASS	1	E-705	0700-1900	EL DORADO FAIR		
SKD SIERRA FOREST 3		10/20	DUARTE	1	E-706	0700-1900	EL DORADO FAIR		
SKD SIERRA FOREST 5		10/20	MARVIN	1	E-708	0700-1900	EL DORADO FAIR		
SKD PATHFINDER		10/23	DEMELLO	2	E-50445	0700-1900	EL DORADO FAIR		
EXCA2 LONESTAR ENT		10/16	MILLER	2	E-50231	0700-1900	EL DORADO FAIR		
FEL1 AXSUS 4		10/17	HART	2	E-700	0700-1900	EL DORADO FAIR		
FEL1 AXSUS 1		10/22	HAER	2	E-701	0700-1900	EL DORADO FAIR		
FEL1 AXSUS 3		10/21	FERGUSON	2	E-719	0700-1900	EL DORADO FAIR		
FEL1 SIERRA NEVADA		10/20	D. WASS	1	E-699	0700-1900	EL DORADO FAIR		
PROC PATHFINDER		10/20	FULTON	1	E-730	0700-1900	EL DORADO FAIR		
PROC AXSUS		10/21	GRAY	2	E-50406	0700-1900	EL DORADO FAIR		
GRND ARBORWORKS		10/16	MEALIN	1	E-731	0700-1900	EL DORADO FAIR		
LOAD HEAVYHAUL		10/12	TAYLOR	2	E-50226	0700-1900	EL DORADO FAIR		
LOAD ROMINE TIMBER 1		10/12	ROMINE	1	E-724	0700-1900	EL DORADO FAIR		
LOAD ROMINE TIMBER 2		10/14	ROMINE	1	E-725	0700-1900	EL DORADO FAIR		
LOAD BAMFORD 1		10/15	MONTGOMERY	1	E-720	0700-1900	EL DORADO FAIR		
LOAD SIERRA NEVADA 1		10/20	LANGLEY	1	E-50172	0700-1900	EL DORADO FAIR		
LOAD SIERRA NEVADA 2		10/20	WASS	1	E-50173	0700-1900	EL DORADO FAIR		
LOAD SIERRA NEVADA 3		10/20	STANBRIDGE	1	E-50159	0700-1900	EL DORADO FAIR		
6. Work Assignments:									
TASK: Perform priority suppression repair work within Branch 1. Repair contingency line along Peavine Ridge and Granite Springs Rd while continuing Hazard Tree Removal along Mormon Emigrant Trail and Sierra at Tahoe									
PURPOSE: Minimize any near-term environmental resource impacts as a result of fire suppression efforts									
END STATE: Watershed and areas adjacent to values at risk are protected using the approved standard									
7. Special Instructions:									
Backhaul trash, excess supplies and provide a location for accountable property									
Identify and coordinate the removal of hazard trees									
Resources need to report to El Dorado County Fairgrounds (100 Placerville Dr, Placerville, CA 95667) for briefing									
8. Communications									
Name	Ch	Function	Rx Freq	Rx Tone	Tx Freq	Tx Tone	Notes		
COMMAND SEE ICS 205	1	COMMAND							
NIFC T6	9	TACTICAL	166.7750N		166.7750N				
A/G CMD	12	A/G CMD	167.9500N		167.9500N				
CALCORD	15	COORDINATION	156.0750N	156.7	156.0750N	156.7			
GUARD 16	16	EMERGENCY	168.6250N		168.6250N	110.9			
9. Prepared by: Name:									
Jeremy Owens				RESL					
Signature: <i>/s/ Jeremy Owens</i>									
ICS 204									
				Date/Time: 10/10/2021 2200			Personnel Count: 50		

ASSIGNMENT LIST (ICS 204 WF)

CONTROLLED UNCLASSIFIED
INFORMATION//BASIC

1. Incident Name:	2. Operational Period:	3. Branch	Division
CALDOR	Date From: 10/11/21 Date To: 10/12/21 Time From: 0700 Time To: 0700	I	MET Repair

4. Operations Personnel:				Page 2 of 2
Operations Section Chief: Matt Ahearn		Night Ops: Jason Wingard (T)		
Branch Director: Jamie Rickard (T)		Deputy Ops: Rick Marinelli/Todd McDivitt		
Division/Group Supervisor: David McIlhargie/Paul Naman		Air Attack: Bryan Rosenow		

5. Resources Assigned:								** Resources Below in Bold are 12 Hour **	
Resource Identifier	ALS	LWD	Leader	Personnel	Request #	Hours	Reporting Location		
LOAD SIERRA NEVADA 4		10/20	DIBBLE	1	E-50158	0700-1900	EL DORADO FAIR		
LOG TRK RIDGE LOGGING		10/15	SLACK	1	E-737	0700-1900	EL DORADO FAIR		
LOG HEAVYHAUL		10/12	BAXTER	1	E-738	0700-1900	EL DORADO FAIR		
LOG TRK ARBORWORKS		10/14	ROMERO	1	E-50157	0700-1900	EL DORADO FAIR		
FMOD SWEDBERG 2		10/18	WILLSEY	2	O-50734	0700-1900	EL DORADO FAIR		
FMOD WEST MT TIMBER		10/16	KECK	1	O-50720	0700-1900	EL DORADO FAIR		
FMOD AMERICAN IND		10/17	MOOERS	2	O-50731	0700-1900	EL DORADO FAIR		
FMOD TG		10/18	LINK	2	O-50735	0700-1900	EL DORADO FAIR		
FMOD NORTH ZONE 2		10/18	NEALY	2	O-50732	0700-1900	EL DORADO FAIR		
TFLD SIGONA		10/12	SIGONA	1	O-50683	0700-1900	EL DORADO FAIR		
HEQB MAUTZ (T)		10/11	MAUTZ	1	N/A	0700-1900	EL DORADO FAIR		
EMTF ROCKENBACH		10/17	ROCKENBACH	1	E-50368	0700-1900	EL DORADO FAIR		
EMTF BULMER		10/23	BULMER	1	O-50843	0700-1900	EL DORADO FAIR		

6. Work Assignments:
 TASK: Perform priority suppression repair work within Branch 1. Repair contingency line along Peavine Ridge and Granite Springs Rd while continuing Hazard Tree Removal along Mormon Emigrant Trail and Sierra at Tahoe
 PURPOSE: Minimize any near-term environmental resource impacts as a result of fire suppression efforts
 END STATE: Watershed and areas adjacent to values at risk are protected using the approved standard

7. Special Instructions:
 Backhaul trash, excess supplies and provide a location for accountable property
 Identify and coordinate the removal of hazard trees

 Resources need to report to El Dorado County Fairgrounds (100 Placerville Dr, Placerville, CA 95667) for briefing

8. Communications							
Name	Ch	Function	Rx Freq	Rx Tone	Tx Freq	Tx Tone	Notes
COMMAND SEE ICS 205	1	COMMAND					
NIFC T6	9	TACTICAL	166.7750N		166.7750N		
A/G CMD	12	A/G CMD	167.9500N		167.9500N		
CALCORD	15	COORDINATION	156.0750N	156.7	156.0750N	156.7	
GUARD 16	16	EMERGENCY	168.6250N		168.6250N	110.9	

9. Prepared by: Name: Jeremy Owens RESL
Signature: */s/ Jeremy Owens*
ICS 204 Date/Time: 10/10/2021 2200 Personnel Count: 17

ASSIGNMENT LIST (ICS 204 WF)

CONTROLLED UNCLASSIFIED
INFORMATION//BASIC

1. Incident Name: <p style="text-align: center;">CALDOR</p>	2. Operational Period: Date From: 10/11/21 Date To: 10/12/21 Time From: 0700 Time To: 0700	3. Branch <p style="text-align: center;">1</p>	Division <p style="text-align: center;">Wright Lake Repair</p>
--	---	---	---

Page 1 of 2

4. Operations Personnel:			
Operations Section Chief: Matt Ahearn	Night Ops: Jason Wingard (T)		
Branch Director: Jamie Rickard (T)	Deputy Ops: Rick Marinelli/Todd McDivitt		
Division/Group Supervisor: Mark Johnson	Air Attack: Bryan Rosenow		

5. Resources Assigned:	** Resources Below in Bold are 12 Hour **					
Resource Identifier	ALS	LWD	Leader	Personnel	Request #	Hours Reporting Location
ENG6 FIRECO		10/13	HANSON	3	E-50282	0700-1900 EL DORADO FAIR
WTS2 PARTRIDGE		10/23	CARTER	1	E-50371	0700-1900 EL DORADO FAIR
DOZ2 HERTZIG 1		10/11	HERTZIG	1	E-101	0700-1900 EL DORADO FAIR
MAST PVT (E-58)		10/21	MARLIN	1	E-58	0700-1900 EL DORADO FAIR
SKD T1 CECIL LOGGING		10/13	HUNTER	1	E-50153	0700-1900 EL DORADO FAIR
SKID GRAPPLE ARBORWORKS		10/15	GORDILLO	1	E-50393	0700-1900 EL DORADO FAIR
SKID SCREW ARBORWORKS		10/15	ALCANTARA	1	E-50394	0700-1900 EL DORADO FAIR
EXCA INGRAM		10/17	WHEELER	1	E-50155	0700-1900 EL DORADO FAIR
EXCA EMERSON		10/24	SHERRILL	1	E-50154	0700-1900 EL DORADO FAIR
FEL1 AXSUS 3		10/21	FERGUSON	2	E-719	0700-1900 EL DORADO FAIR
GRND AXSUS TUB		10/13	BASNAW	4	E-50303	0700-1900 EL DORADO FAIR
LOG TRK ARBORWORKS 1		10/13	WALNRIGHT	1	E-50396	0700-1900 EL DORADO FAIR
LOG TRK ARBORWORKS 2		10/13	GRACE	1	E-50400	0700-1900 EL DORADO FAIR
LOAD BAMFORD 4		10/16	MONTGOMERY	2	E-50414	0700-1900 EL DORADO FAIR
TCTL CTL FOREST MANAGEMENT		10/16	KREGOSKI	6	E-50190	0700-1900 EL DORADO FAIR
SKD SIERRA FOREST 4		10/17	CAMPBELL	1	E-707	0700-1900 EL DORADO FAIR
SKD J&R LOGGING		10/17	JIMENEZ	1	E-712	0700-1900 EL DORADO FAIR
SKD T1 CECIL LOGGING		10/13	HUNTER	1	E-50153	0700-1900 EL DORADO FAIR
MAST PVT (E-58)		10/21	MARLIN	1	E-58	0700-1900 EL DORADO FAIR
FEL2 J&R LOGGING		10/17	JIMENEZ	1	E-50151	0700-1900 EL DORADO FAIR

6. Work Assignments:
 TASK: Perform priority suppression repair work within Branch 1. Repair contingency line along Peavine Ridge and Granite Springs Rd while continuing Hazard Tree Removal along Mormon Emigrant Trail and Sierra at Tahoe
 PURPOSE: Minimize any near-term environmental resource impacts as a result of fire suppression efforts
 END STATE: Watershed and areas adjacent to values at risk are protected using the approved standard

7. Special Instructions:
 Backhaul trash, excess supplies and provide a location for accountable property
 Identify and coordinate the removal of hazard trees

 Resources need to report to El Dorado County Fairgrounds (100 Placerville Dr, Placerville, CA 95667) for briefing

8. Communications							
Name	Ch	Function	Rx Freq	Rx Tone	Tx Freq	Tx Tone	Notes
COMMAND SEE ICS 205	1	COMMAND					
NIFC T6	9	TACTICAL	166.7750N		166.7750N		
A/G CMD	12	A/G CMD	167.9500N		167.9500N		
CALCORD	15	COORDINATION	156.0750N	156.7	156.0750N	156.7	
GUARD 16	16	EMERGENCY	168.6250N		168.6250N	110.9	

9. Prepared by: Name: Jeremy Owens RESL

Signature: */s/ Jeremy Owens*
ICS 204 Date/Time: 10/10/2021 2200 Personnel Count: 32

ASSIGNMENT LIST (ICS 204 WF)

CONTROLLED UNCLASSIFIED
INFORMATION//BASIC

1. Incident Name: <p style="text-align: center; font-weight: bold;">CALDOR</p>		2. Operational Period: Date From: 10/11/21 Date To: 10/12/21 Time From: 0700 Time To: 0700				3. Branch Division <p style="text-align: center; font-weight: bold;">Wright Lake Repair</p>	
4. Operations Personnel:					Page 2 of 2		
Operations Section Chief: Matt Ahearn			Night Ops: Jason Wingard (T)				
Branch Director: Jamie Rickard (T)			Deputy Ops: Rick Marinelli/Todd McDivitt				
Division/Group Supervisor: Mark Johnson			Air Attack: Bryan Rosenow				
5. Resources Assigned:		** Resources Below in Bold are 12 Hour **					
Resource Identifier	ALS	LWD	Leader	Personnel	Request #	Hours Reporting Location	
PROC J&R LOGGING		10/17	JIMENEZ	1	E-50150	0700-1900 EL DORADO FAIR	
SKID GRAPPLE ARBORWORKS		10/15	GORDILLO	1	E-50393	0700-1900 EL DORADO FAIR	
SKID SCREW ARBORWORKS		10/15	ALCANTARA	1	E-50394	0700-1900 EL DORADO FAIR	
EXCA INGRAM		10/17	WHEELER	1	E-50155	0700-1900 EL DORADO FAIR	
EXCA EMERSON		10/24	SHERRILL	1	E-50154	0700-1900 EL DORADO FAIR	
GRND AXSUS TUB		10/13	BASNAW	4	E-50303	0700-1900 EL DORADO FAIR	
LOG TRK ARBORWORKS 1		10/13	WALNRIGHT	1	E-50396	0700-1900 EL DORADO FAIR	
LOG TRK ARBORWORKS 2		10/13	GRACE	1	E-50400	0700-1900 EL DORADO FAIR	
LOAD BAMFORD 4		10/16	MONTGOMERY	2	E-50414	0700-1900 EL DORADO FAIR	
LDFR AXSUS		10/23	BRIDENBACK	1	E-50450	0700-1900 EL DORADO FAIR	
FORW AXSUS		10/21	ANDERSON	2	E-50413	0700-1900 EL DORADO FAIR	
DEBRIS TRK ARBORWORKS 1		10/13	ROMERO	1	E-50397	0700-1900 EL DORADO FAIR	
DEBRIS TRK ARBORWORKS 2		10/13	SANDOVAL	1	E-50399	0700-1900 EL DORADO FAIR	
TDMP AXSUS		10/21	BORTS	2	E-50405	0700-1900 EL DORADO FAIR	
FMOD SWEDBERG 1		10/14	MEHAFFEY	2	O-50512	0700-1900 EL DORADO FAIR	
FMOD GROUND ZERO		10/20	CUTRIGHT	2	O-50721	0700-1900 EL DORADO FAIR	
TFLD WARD		10/11	WARD	1	N/A	0700-1900 EL DORADO FAIR	
TFLD CHRISTIAN		10/21	CHRISTIAN	1	O-50817	0700-1900 EL DORADO FAIR	
HEQB(T) CELIO		10/11	CELIO	1	N/A	0700-1900 EL DORADO FAIR	
EMPF POTTER		10/12	POTTER	1	E-50377	0700-1900 EL DORADO FAIR	
EMTF GRAY		10/12	GRAY	1	E-50377	0700-1900 EL DORADO FAIR	
6. Work Assignments:							
TASK: Perform priority suppression repair work within Branch 1. Repair contingency line along Peavine Ridge and Granite Springs Rd while continuing Hazard Tree Removal along Mormon Emigrant Trail and Sierra at Tahoe							
PURPOSE: Minimize any near-term environmental resource impacts as a result of fire suppression efforts							
END STATE: Watershed and areas adjacent to values at risk are protected using the approved standard							
7. Special Instructions:							
Backhaul trash, excess supplies and provide a location for accountable property							
Identify and coordinate the removal of hazard trees							
Resources need to report to El Dorado County Fairgrounds (100 Placerville Dr, Placerville, CA 95667) for briefing							
8. Communications							
Name	Ch	Function	Rx Freq	Rx Tone	Tx Freq	Tx Tone Notes	
COMMAND SEE ICS 205	1	COMMAND					
NIFC T6	9	TACTICAL	166.7750N		166.7750N		
A/G CMD	12	A/G CMD	167.9500N		167.9500N		
CALCORD	15	COORDINATION	156.0750N	156.7	156.0750N	156.7	
GUARD 16	16	EMERGENCY	168.6250N		168.6250N	110.9	
9. Prepared by: Name: Jeremy Owens RESL							
Signature: <i>/s/ Jeremy Owens</i>							
ICS 204		Date/Time: 10/10/2021 2200			Personnel Count: 29		

ASSIGNMENT LIST (ICS 204 WF)

CONTROLLED UNCLASSIFIED
INFORMATION/BASIC

1. Incident Name: <p style="text-align: center; font-size: 1.2em;">CALDOR</p>		2. Operational Period: Date From: 10/11/21 Date To: 10/12/21 Time From: 0700 Time To: 0700				3. Branch Division <p style="text-align: center; font-size: 1.2em;">Plummer Ridge Repair</p>	
						Page 1 of 1	
4. Operations Personnel:		Operations Section Chief: Matt Ahearn		Night Ops: Jason Wingard (T)			
		Branch Director: Jamie Rickard (T)		Deputy Ops: Rick Marinelli/Todd McDivitt			
		Division/Group Supervisor: Jesse Plummer		Air Attack: Bryan Rosenow			
5. Resources Assigned:		** Resources Below in Bold are 12 Hour **					
Resource Identifier	ALS	LWD	Leader	Personnel	Request #	Hours	Reporting Location
HC2 CABRERA 1		10/21	CABRERA	20	C-50119	0700-1900	EL DORADO FAIR
HC2 BIRRUETA		10/21	BIRRUETA	20	C-50120	0700-1900	EL DORADO FAIR
WFM2 WILDLAND FIRE		10/22	GAST	10	O-50834	0700-1900	EL DORADO FAIR
WTS1 LOVATO		10/19	LOVATO	1	E-50248	0700-1900	EL DORADO FAIR
WTT2 PNF 21		10/20	SMALLSER	2	E-50430	0700-1900	EL DORADO FAIR
WTS2 DUST BUSTER		10/21	HOLT	1	E-50457	0700-1900	EL DORADO FAIR
DOZ2 DARRAH		10/21	BREHM	2	E-50429	0700-1900	EL DORADO FAIR
DOZ2 2C LAND AND TIMBER		10/16	CARRILLO	2	E-50234	0700-1900	EL DORADO FAIR
DOZ2 BUFFINGTON		10/17	BENSON	2	E-20022	0700-1900	EL DORADO FAIR
MAST BELLA WILDFIRE		10/21	GRANAT	2	E-50476	0700-1900	EL DORADO FAIR
MAST RIDGE LOG		10/21	CHAPUT	2	E-50467	0700-1900	EL DORADO FAIR
MAST MILLER		10/23	YANTIS	2	E-50469	0700-1900	EL DORADO FAIR
EXCA J3 CONTRACTING		10/24	BRICH	2	E-50455	0700-1900	EL DORADO FAIR
FEL1 PATHFINDER 2		10/22	GRIFFITH	2	E-50437	0700-1900	EL DORADO FAIR
FEL1 VOLCANO CRK		10/17	GODON	2	E-50407	0700-1900	EL DORADO FAIR
GRD JDB3		10/22	WERRY	2	E-50147	0700-1900	EL DORADO FAIR
SKD BULL CREEK		10/11	CAHOON	2	E-65	0700-1900	EL DORADO FAIR
CHIP CTS VENTURES		10/14	NIEVES	3	E-20611	0700-1900	EL DORADO FAIR
CHIP RAPID RESPONSE		10/21	TABARES	3	E-50472	0700-1900	EL DORADO FAIR
CHIP HI COUNTRY		10/22	THOMAS	3	E-50422	0700-1900	EL DORADO FAIR
CHIP WOOD CHUCK		10/24	TINGLER	1	E-50174	0700-1900	EL DORADO FAIR
FAL1 A&F ENTERPRISES		10/11	BOKISH	1	O-50088	0700-1900	EL DORADO FAIR
FAL1 MOEN TIMBER FALLING		10/11	MOEN	1	O-50089	0700-1900	EL DORADO FAIR
FMOD SWEDBERG 3		10/21	GIGUERE	2	O-50722	0700-1900	EL DORADO FAIR
EMPF GREEN		10/23	GREEN	1	O-50887	0700-1900	EL DORADO FAIR
6. Work Assignments:							
TASK: Coordinate with REAFs for standard suppression repair and timber extraction. Dozer line repair as well as slash dispersal and removal.							
PURPOSE: Minimize any near-term environmental resource impacts as a result of fire suppression efforts.							
END STATE: Watershed and areas adjacent to values at risk are protected using the approved standard.							
7. Special Instructions:							
Backhaul trash, excess supplies and provide a location for accountable property							
Identify and coordinate the removal of hazard trees							
Resources need to report to El Dorado County Fairgrounds (100 Placerville Dr, Placerville, CA 95667) for briefing							
8. Communications							
Name	Ch	Function	Rx Freq	Rx Tone	Tx Freq	Tx Tone	Notes
COMMAND SEE ICS 205	1	COMMAND					
NIFC T7	9	TACTICAL	168.2500N		168.2500N		
A/G CMD	12	A/G CMD	167.9500N		167.9500N		
CALCORD	15	COORDINATION	156.0750N	156.7	156.0750N	156.7	
GUARD 16	16	EMERGENCY	168.6250N		168.6250N	110.9	
9. Prepared by: Name:		Jeremy Owens		RESL			
						Signature: <i>/s/ Jeremy Owens</i>	
ICS 204	Date/Time: 10/10/2021 2200			Personnel Count: 88			

ASSIGNMENT LIST (ICS 204 WF)

CONTROLLED UNCLASSIFIED
INFORMATION//BASIC

1. Incident Name:	2. Operational Period:	3. Branch	Division
CALDOR	Date From: 10/11/21 Date To: 10/12/21 Time From: 0700 Time To: 0700	III	I / M
4. Operations Personnel:		Page 1 of 1	

Operations Section Chief: Matt Ahearn	Night Ops: Jason Wingard (T)
Branch Director: TBD	Deputy Ops: Rick Marinelli/Todd McDivitt
Division/Group Supervisor: Travis Bills	Air Attack: Bryan Rosenow

5. Resources Assigned:		** Resources Below in Bold are 12 Hour **					
Resource Identifier	ALS	LWD	Leader	Personnel	Request #	Hours	Reporting Location
HC2 PACIFIC OASIS		10/22	PINDELL	20	C-50121	0700-1900	HEAVENLY ICP
HC2 WOODPECKER		10/12	FOX	20	C-50110	0700-1900	HEAVENLY ICP
ENG3 MDF 64		10/19	KEONI	5	E-50433	0700-1900	HEAVENLY ICP
ENG3 PNF 322		10/20	RODRIGUEZ	5	E-50459	0700-1900	HEAVENLY ICP
ENG3 PNF 332		10/21	WELLS	5	E-50460	0700-1900	HEAVENLY ICP
ENG6 TX-TXF E641		10/11	FOSTER	4	E-466	0700-1900	HEAVENLY ICP
STEN DAVIS*		10/12	DAVIS	1	O-50450	0700-1900	HEAVENLY ICP
FMOD UNDERDOG 3		10/12	RILEY	2	O-50086	0700-1900	HEAVENLY ICP
EMPF KEFFER	X	10/13	KEFFER	1	E-50129	0700-1900	HEAVENLY ICP
EMPF SHEPPARD	X	10/13	SHEPPARD	1	E-50129	0700-1900	HEAVENLY ICP
REMS VALLE		10/23	VALLER	4	O-50786	0700-1900	HEAVENLY ICP
SOFR WOODMAN		10/14	WOODMAN	1	O-50534	0700-1900	HEAVENLY ICP

6. Work Assignments:
 TASK: Secure perimeter utilizing existing natural barriers and take suppression action around Echo Lake and upper Forni Meadows.
 PURPOSE: Minimize any fire progression and ensure the safety of those working north of Hwy 50; coordinate with Suppression Repair for accountability and safety of those working along Wright Lake Road
 END STATE: Fires edge in the division is controlled and escape is improbable

7. Special Instructions:
 Backhaul trash, excess supplies and provide a location for accountable property
 Identify and coordinate the removal of hazard trees
 * Indicates IA Resource
 Resources need to report to Heavenly ICP (3860 Saddle Rd., South Lake Tahoe, CA 96150) for briefing and end of shift

8. Communications							
Name	Ch	Function	Rx Freq	Rx Tone	Tx Freq	Tx Tone	Notes
COMMAND SEE ICS 205	1	COMMAND					
NIFC T1	6	TACTICAL	168.0500N		168.0500N		
A/G CMD	12	A/G CMD	167.9500N		167.9500N		
CALCORD	15	COORDINATION	156.0750N	156.7	156.0750N	156.7	
GUARD 16	16	EMERGENCY	168.6250N		168.6250N	110.9	

9. Prepared by: Name: Jeremy Owens RESL
Signature: */s/ Jeremy Owens*

ICS 204	Date/Time: 10/10/2021 2200	Personnel Count: 69
----------------	----------------------------	---------------------

ASSIGNMENT LIST (ICS 204 WF)

CONTROLLED UNCLASSIFIED
INFORMATION//BASIC

1. Incident Name: CALDOR		2. Operational Period: Date From: 10/11/21 Date To: 10/12/21 Time From: 0700 Time To: 0700		3. Branch III	Division O / P
---	--	---	--	--------------------------------	---------------------------------

Page 1 of 1

4. Operations Personnel:				Night Ops: Jason Wingard (T)
Operations Section Chief: Matt Ahearn		Branch Director: TBD		Deputy Ops: Rick Marinelli/Todd McDivitt
Division/Group Supervisor: Ted King		Air Attack: Bryan Rosenow		

5. Resources Assigned:		** Resources Below in Bold are 12 Hour **					
Resource Identifier	ALS	LWD	Leader	Personnel	Request #	Hours	Reporting Location
ENG3 TMU 341*		10/21	KING	5	E-50090	0700-1900	HEAVENLY ICP
ENG3 J3 CONTRACTING E29		10/13	RAD	3	E-50215	0700-1900	HEAVENLY ICP
ENG3 AMERICAN WILDFIRE*		10/13	STANOVICH	3	E-50319	0700-1900	HEAVENLY ICP
ENG6 MT-E646		10/11	MCHUGH	3	E-50204	0700-1900	HEAVENLY ICP
SOF2 COLETTI		10/19	COLETTI	1	O-50768	0700-1900	HEAVENLY ICP

6. Work Assignments:
TASK: Support crews taking suppression action near Trimmer Peak. Provide for a tactical patrol and respond to any calls for service. Coordinate with REAFs and mop up to the extent necessary on the fires edge and within the perimeter where infrastructure and values at risk are present.
PURPOSE: Minimize any fire progression, keeping the fire within its current footprint
END STATE: Fires edge in the division is controlled and escape is improbable

7. Special Instructions:
Backhaul trash, excess supplies and provide a location for accountable property
Identify and coordinate the removal of hazard trees
* Indicates IA Resource
Resources need to report to Heavenly ICP (3860 Saddle Rd., South Lake Tahoe, CA 96150) for briefing and end of shift

8. Communications							
Name	Ch	Function	Rx Freq	Rx Tone	Tx Freq	Tx Tone	Notes
COMMAND SEE ICS 205	1	COMMAND					
NIFC T6	7	TACTICAL	166.7750N		166.7750N		
A/G CMD	12	A/G CMD	167.9500N		167.9500N		
CALCORD	15	COORDINATION	156.0750N	156.7	156.0750N	156.7	
GUARD 16	16	EMERGENCY	168.6250N		168.6250N	110.9	

9. Prepared by: Name: Jeremy Owens RESL

Signature: /s/ *Jeremy Owens*

ICS 204 Date/Time: 10/10/2021 2200 Personnel Count: 15

ASSIGNMENT LIST (ICS 204 WF)

CONTROLLED UNCLASSIFIED
INFORMATION/BASIC

1. Incident Name:	2. Operational Period:	3. Branch	Division
CALDOR	Date From: 10/11/21 Date To: 10/12/21 Time From: 0700 Time To: 0700	III	Q / R
4. Operations Personnel:		Page 1 of 1	

Operations Section Chief: Matt Ahearn	Night Ops: Jason Wingard (T)
Branch Director: TBD	Deputy Ops: Rick Marinelli/Todd McDivitt
Division/Group Supervisor: Ron Gregor	Air Attack: Bryan Rosenow

5. Resources Assigned:		** Resources Below in Bold are 12 Hour **					
Resource Identifier	ALS	LWD	Leader	Personnel	Request #	Hours	Reporting Location
HC2IA IRON MOUNTAIN 31		10/18	BREITWIESER	18	C-50062	0700-1900	HEAVENLY ICP
HC2IA COLUMBIA RIVER		10/14	MIZELL	21	C-50115	0700-1900	HEAVENLY ICP
HC2 OROZCO		10/13	OROZCO	20	C-50103	0700-1900	HEAVENLY ICP
ENG3 TAHOE 373		10/17	FRETWELL	5	E-50424	0700-1900	HEAVENLY ICP
ENG3 PNF 316		10/21	REGAN	5	E-50458	0700-1900	HEAVENLY ICP
ENG3 TMU 342*		10/16	DE LEON	5	E-50415	0700-1900	HEAVENLY ICP
ENG3 MODOC 334		10/17	TROTTS	4	E-50425	0700-1900	HEAVENLY ICP
ENG3 OUTBACK*		10/15	WOLLEBAEK	3	E-50346	0700-1900	HEAVENLY ICP
ENG3 J3 CONTRACTING 2		10/20	MCANDREW	3	E-50294	0700-1900	HEAVENLY ICP
ENG6 PEANUT PIE		10/18	GOODGUN	3	E-50219	0700-1900	HEAVENLY ICP
WTT2 CGS INC		10/14	CORELY	1	E-20280	0700-1900	HEAVENLY ICP
WTS2 DAHL & SONS		10/11	DAHL	1	E-50333	0700-1900	HEAVENLY ICP
FMOD UNDERDOG 2		10/23	POOR	2	O-50856	0700-1900	HEAVENLY ICP
TFLD PARR		10/23	PARR	1	O-50816	0700-1900	HEAVENLY ICP
TFLD KYLE		10/23	KYLE	1	O-50865	0700-1900	HEAVENLY ICP
EMPF POLLOCK	X	10/14	POLLOCK	1	O-50533	0700-1900	HEAVENLY ICP
EMPF IGNASH (UTV)	X	10/16	IGNASH	1	E-50367	0700-1900	HEAVENLY ICP
EMTF WILD (UTV)		10/16	WILD	1	E-50367	0700-1900	HEAVENLY ICP
EMTF HOLLOWAY		10/17	HOLLOWAY	1	E-50417	0700-1900	HEAVENLY ICP
EMTF VENABLE		10/23	VENABLE	1	E-50416	0700-1900	HEAVENLY ICP
SOFR MARTIN		10/23	MARTIN	1	O-50869	0700-1900	HEAVENLY ICP
SOFR ORR (T)		10/12	ORR	1	O-50659	0700-1900	HEAVENLY ICP

6. Work Assignments:
 TASK: Actively suppress any fire along Schneider Camp 4x4 Rd. Reinforce existing containment lines and mop up to the extent necessary, utilizing natural barriers. Secure any heat sources between DP-65 and Scout Peak near Silver Lake and secure any heat sources south of Hwy 88.
 PURPOSE: Minimize any fire progression and ensure the safety of those working within the division
 END STATE: Fires edge in the division is controlled and escape is improbable

7. Special Instructions:
 Backhaul trash, excess supplies and provide a location for accountable property
 Identify and coordinate the removal of hazard trees
 * Indicates IA Resource
 Resources need to report to Heavenly ICP (3860 Saddle Rd., South Lake Tahoe, CA 96150) for briefing and end of shift

8. Communications							
Name	Ch	Function	Rx Freq	Rx Tone	Tx Freq	Tx Tone	Notes
COMMAND SEE ICS 205	1	COMMAND					
NIFC T3	8	TACTICAL	168.6000N		168.6000N		
A/G CMD	12	A/G CMD	167.9500N		167.9500N		
CALCORD	15	COORDINATION	156.0750N	156.7	156.0750N	156.7	
GUARD 16	16	EMERGENCY	168.6250N		168.6250N	110.9	

9. Prepared by: Name:	Jeremy Owens	RESL
	Signature: <i>/s/ Jeremy Owens</i>	

ASSIGNMENT LIST (ICS 204 WF)

CONTROLLED UNCLASSIFIED
INFORMATION//BASIC

1. Incident Name:	2. Operational Period:	3. Branch	Division
CALDOR	Date From: 10/11/21 Date To: 10/12/21 Time From: 0700 Time To: 0700	III	Meyers Repair

4. Operations Personnel: Page 1 of 2

Operations Section Chief: Matt Ahearn	Night Ops: Jason Wingard (T)
Branch Director: TBD	Deputy Ops: Rick Marinelli/Todd McDivitt
Division/Group Supervisor: Shane Glaze	Air Attack: Bryan Rosenow

5. Resources Assigned: ** Resources Below in Bold are 12 Hour **

Resource Identifier	ALS	LWD	Leader	Personnel	Request #	Hours	Reporting Location
HC2 R&R CONTRACTING		10/11	IBARRA	20	C-50041	0700-1900	HEAVENLY ICP
HC2 GRIZZLY RED		10/11	FONSECA	20	C-50042	0700-1900	HEAVENLY ICP
HC2 MOUNTAINEER 1		10/12	PEREZ	20	C-50072	0700-1900	HEAVENLY ICP
HC2 MOUNTAINEER MT2		10/12	WENCESLAO	20	C-50043	0700-1900	HEAVENLY ICP
HC2 M R CONTRACTING		10/12	ONEAL	20	C-50111	0700-1900	HEAVENLY ICP
HC2 FRANCO 58		10/13	QUEVEDO	20	C-50104	0700-1900	HEAVENLY ICP
WTT2 QUALITY CONST		10/16	INDIHATR	1	E-20008	0700-1900	HEAVENLY ICP
WTT2 SILVER STATE		10/12	MOORE	2	E-50297	0700-1900	HEAVENLY ICP
WTS3 US RANCH		10/18	SALAZAR	1	E-50246	0700-1900	HEAVENLY ICP
EXCA BALDWIN DIESEL		10/25	MILLER	2	E-50232	0700-1900	HEAVENLY ICP
EXCA JW MORRISON		10/20	DALE	2	E-50229	0700-1900	HEAVENLY ICP
EXCA1 LESLIE HEAVY		10/12	HARRIS	2	E-50401	0700-1900	HEAVENLY ICP
EXCA HACKER MACHINES		10/17	ARCE	2	E-50233	0700-1900	HEAVENLY ICP
EXCA SERMON		10/23	SERMON	2	E-50260	0700-1900	HEAVENLY ICP
EXCA WESTERN MT EXCA		10/18	BUGLI	2	E-50264	0700-1900	HEAVENLY ICP
EXCA PRO INC		10/12	ROE	2	E-50261	0700-1900	HEAVENLY ICP
EXCA ALLEN WATER		10/17	ALLEN	2	E-50357	0700-1900	HEAVENLY ICP
FEL1 AXSUS 2		10/22	AKRE	2	E-716	0700-1900	HEAVENLY ICP
MAST PERRAULT		10/15	DECUIR	2	E-50250	0700-1900	HEAVENLY ICP

6. Work Assignments:

TASK: Perform priority suppression repair work within Branch 3. Coordinate closely with CALFIRE AEU and USFS REAFs, focusing repair efforts in High Meadows, Powerline, Saxton to Trout Creek, Fountain Place private land, Hell Hole, Saxton Creek to Iroquois Circle and the PCT at Echo Summit.

PURPOSE: Minimize any near-term environmental resource impacts as a result of fire suppression efforts

END STATE: Watershed and areas adjacent to values at risk are protected using the approved standard

7. Special Instructions:

Backhaul trash, excess supplies and provide a location for accountable property

Identify and coordinate the removal of hazard trees

Resources need to report to Heavenly ICP (3860 Saddle Rd., South Lake Tahoe, CA 96150) for briefing and end of shift

8. Communications

Name	Ch	Function	Rx Freq	Rx Tone	Tx Freq	Tx Tone	Notes
COMMAND SEE ICS 205	1	COMMAND					
VFIRE 24	10	TACTICAL	154.272N	156.7	154.2725N	156.7	
A/G CMD	12	A/G CMD	167.9500N		167.9500N		
CALCORD	15	COORDINATION	156.0750N	156.7	156.0750N	156.7	
GUARD 16	16	EMERGENCY	168.6250N		168.6250N	110.9	

9. Prepared by: Name: Jeremy Owens RESL

Signature: */s/ Jeremy Owens*

ICS 204 Date/Time: 10/10/2021 2200 Personnel Count: 144

ASSIGNMENT LIST (ICS 204 WF)

CONTROLLED UNCLASSIFIED
INFORMATION//BASIC

1. Incident Name: <p style="text-align: center;">CALDOR</p>	2. Operational Period: Date From: 10/11/21 Date To: 10/12/21 Time From: 0700 Time To: 0700	3. Branch Division <p style="text-align: center;">III</p> Kirkwood Repair
4. Operations Personnel:		Page 1 of 1

Operations Section Chief: Matt Ahearn	Night Ops: Jason Wingard (T)
Branch Director: TBD	Deputy Ops: Rick Marinelli/Todd McDivitt
Division/Group Supervisor: N.Arellano/B. Hunter (T)/ M. Cachero	Air Attack: Bryan Rosenow

5. Resources Assigned:	** Resources Below in Bold are 12 Hour **						
Resource Identifier	ALS	LWD	Leader	Personnel	Request #	Hours	Reporting Location
HC2IA LOST RIVER		10/14	GIFFORD	20	C-50114	0700-1900	HEAVENLY ICP
HC2 ROCHA		10/12	DURAN	20	C-50109	0700-1900	HEAVENLY ICP
DOZ2 CECIL LOGGING		10/12	CAMPBELL	2	E-20702	0700-1900	HEAVENLY ICP
MAST ZEB		10/21	WILLIAMS	2	E-50380	0700-1900	HEAVENLY ICP
EXCA VENTANA RANCH		10/25	LOVERTON	1	E-689	0700-1900	HEAVENLY ICP
EXCA COTTONWOOD		10/15	HARTLEY	2	E-687	0700-1900	HEAVENLY ICP
EXCA CLAYTON		10/17	TITTLE	2	E-50228	0700-1900	HEAVENLY ICP
EXCA DODGE		10/18	DODGE	2	E-50356	0700-1900	HEAVENLY ICP
CHIP TIMBERSMITH		10/13	KEENAN	3	E-50392	0700-1900	HEAVENLY ICP
TFLD BUNKER		10/12	BUNKER	1	O-50568	0700-1900	HEAVENLY ICP
HEQB GENTIS		10/15	GENTIS	1	O-50583	0700-1900	HEAVENLY ICP
HEQB HADEN (T)		10/11	HADEN	1	N/A	0700-1900	HEAVENLY ICP
CARE AMBULANCE 527		10/17	LYDAY/DINGILLO	2	E-20628	0700-1900	HEAVENLY ICP

6. Work Assignments:
 TASK: Perform priority suppression repair work within Branch 1. Repair contingency line along Peavine Ridge and Granite Springs Rd while continuing Hazard Tree Removal along Mormon Emigrant Trail and Sierra at Tahoe
 PURPOSE: Minimize any near-term environmental resource impacts as a result of fire suppression efforts
 END STATE: Watershed and areas adjacent to values at risk are protected using the approved standard

7. Special Instructions:
 Backhaul trash, excess supplies, and provide a location for accountable property.
 Identify and coordinate the removal of hazard trees

 Resources need to report to El Dorado County Fairgrounds (100 Placerville Dr, Placerville, CA 95667) for briefing

8. Communications							
Name	Ch	Function	Rx Freq	Rx Tone	Tx Freq	Tx Tone	Notes
COMMAND SEE ICS 205	1	COMMAND					
NIFC T7	5	TACTICAL	168.2500N		168.2500N		
A/G CMD	12	A/G CMD	167.9500N		167.9500N		
CALCORD	15	COORDINATION	156.0750N	156.7	156.0750N	156.7	
GUARD 16	16	EMERGENCY	168.6250N		168.6250N	110.9	

9. Prepared by: Name: Jeremy Owens RESL

Signature: *1/s/ Jeremy Owens*
ICS 204 Date/Time: 10/10/2021 2200 Personnel Count: 59

ASSIGNMENT LIST (ICS 204 WF)

CONTROLLED UNCLASSIFIED
INFORMATION//BASIC

1. Incident Name: <p style="text-align: center;">CALDOR</p>	2. Operational Period: Date From: 10/11/21 Date To: 10/12/21 Time From: 0700 Time To: 0700	3. Branch Division <p style="text-align: center;">Night Night</p>
--	---	---

4. Operations Personnel:		Page 1 of 1
Operations Section Chief: Matt Ahearn	Night Ops: Jason Wingard (T)	
Branch Director: Jason Wingard	Deputy Ops: Rick Marinelli/Todd McDivitt	
Division/Group Supervisor: Jeff Corser (T)	Air Attack: Bryan Rosenow	

5. Resources Assigned:	** Resources Below in Bold are 12 Hour **						
Resource Identifier	ALS	LWD	Leader	Personnel	Request #	Hours	Reporting Location
ENG3 MNF 343		10/20	QUICK	5	E-50426	1900-0700	HEAVENLY ICP
ENG3 SHF 351		10/20	KISSICK	6	E-50427	1900-0700	HEAVENLY ICP
ENG4 IDAHO TRAILBLAZERS		10/13	TONEY	3	E-50315	1900-0700	HEAVENLY ICP
ENG6 TORCH FIRE		10/13	DAVIS	3	E-50318	1900-0700	HEAVENLY ICP
AMBU ROUGH COUNTRY M2	X	10/13	CARDENA/GROTZER	2	E-50375	1900-0700	HEAVENLY ICP
SOF2 JOHNSON		10/19	JOHNSON	1	O-50767	1900-0700	HEAVENLY ICP

6. Work Assignments:
 TASK: Engage in perimeter control efforts north of Caples Lake to Scout Peak, perform tactical patrol along highway corridors, respond to service calls, and mitigate any isolated heat sources within the fire perimeter where safe to do so
 PURPOSE: Minimize any fire progression, keeping the fire within its current footprint
 END STATE: Fires edge is controlled and escape is improbable

7. Special Instructions:
 Resources denoted with * is identified as I/A resources within the TFR.

 Resources need to report to Heavenly ICP (3860 Saddle Rd., South Lake Tahoe, CA 96150) for briefing and end of shift

8. Communications							
Name	Ch	Function	Rx Freq	Rx Tone	Tx Freq	Tx Tone	Notes
COMMAND SEE ICS 205	1	COMMAND					
VFIRE 25	11	TACTICAL	154.2875N	156.7	154.2875N	156.7	
A/G CMD	12	A/G CMD	167.9500N		167.9500N		
CALCORD	15	COORDINATION	156.0750N	156.7	156.0750N	156.7	
GUARD 16	16	EMERGENCY	168.6250N		168.6250N	110.9	

9. Prepared by: Name: Jeremy Owens RESL

Signature: */s/ Jeremy Owens*
ICS 204 Date/Time: 10/10/2021 2200 Personnel Count: 20

AIR OPERATIONS SUMMARY ICS-220												
Incident Name / Number		Sunrise	Avail	Pumpkin	Sunset	Time Prepared		Date Prepared		Prepared By		
Caldor CA-ENF-024030		7:04:00	8:00:00	6:57:00	6:27:00	19:00:00 Shutdown 6:57:00		10/10/21 Operational Period - Date 10/11/21		Lyndsay Alarcon Operational Period - Time 07:00-21:00		
General Remarks, Safety Notes, Hazards, Air Operations Special Equipment, etc.												
<p>TVL Taxiway A Between Taxiway G & Taxiway J Closed for fire aircraft 09/032 (Exp 10/30)</p> <p>Keep retardant out of waterways, avoid contaminating dipsites, and follow AIs protocols https://www.nwcg.gov/sites/default/files/publications/pms444.pdf</p> <p>Visibility-smoke, wind, wx https://gacc.nifc.gov/gbcc/predictive/smoke/forecast/#</p> <p>Lake Tahoe N39 07.73' x W120 01.55' Elev 6,230' (Tahoe Watershed) is approved for scoopers and firebosses</p> <p>Utilize see and avoid tactics with external loads over roadways and highway</p> <p>Email daily costs to: 2021.caldor.finance@firenet.gov, caldorair@gmail.com, nopsaviation@gmail.com</p> <p>Track all dip site locations / # of dips / gallons taken. Track all drop locations / # of drops / gallons dropped</p> <p>All GPS is to be collected in DD° MM' MM"</p>												
Incident Frequencies	RX	Tone	TX	Tone	T	AM/FM	Position	Name	Phone	EQUIPMENT/SUPPLIES		
A/A (TFR)	118.6250		118.6250			AM	AOBD	Lyndsay Alarcon	661-566-8843	HOS Trailer (Tahoe) E-50146		
A/A ROTOR	133.0250		133.0250			AM	AOBD	Ted Visser	619-981-2409	Admin Trailer (Tahoe) E-20929		
AIR TACTICS	168.1625		168.1625			FM	ASGS	Randy Carter	501-802-6708	Generator (Tahoe) E-21215		
CMD 56 WEST ZONE	172.3500	114.8	163.0375	114.8		FM	ASGS-T	Heather Wonenberg	209-347-7546			
CMD 96 EAST ZONE	169.9625	146.2	165.0500	146.2		FM	ATGS	Bryan Rosenow (AA-17)	530-412-3632			
A/G CMD	167.9500		167.9500			FM	HEBM	Cammie Roy (Tahoe)	907-750-6620			
A/G TAC	166.6125		166.6125			FM	HEBM	Tom Schmidt (Tahoe)	907-699-1634			
DECK	163.1000		163.1000			FM	HMGB	Mike Steip (Pacific)	530-306-5711			
CALCORD	156.0750	156.7 (T6)	156.0750	156.7 (T6)		FM	UASP	Walton Bonds (UR31)	907-371-5150			
AIR GUARD	168.6250		168.6250	110.9 (T1)		FM	SHORTHAUL	Gary "Money" Munson (N355SH)	208-859-4697			
							DISPATCH	Camino ECC	530-647-5224			
HELICOPTERS (TAHOE HELIBASE)												
FAA #	TYPE	Make/Model	Helibase	Avail	Start	Remarks	FAA #	Type	Base	Avail	Start	Remarks
N669H	2	Bell 205 A1++	Tahoe HB	0730	0800	A-419 EU/Bucket/LL/Rappel	N71AA	AA-17	GOO	0730	0800	A-568
N205PT	2	Bell 205 A1++	Tahoe HB	0730	0800	A-16 EU/Bucket/LL						
N353SH	3	ASTAR 350	Tahoe HB	0730	0800	A-550 EU/Bucket/LL/Shorthaul						
N405AE	3	ASTAR 350	Tahoe HB	0730	0800	A-421 EU/Reconn/Bucket/LL						
HELICOPTERS (PACIFIC HELIBASE)												
N911VR (H-516)	2	Bell 212 HP	Pacific HB	0730	0800	A-93 EU/Bucket/LL	UR31	3	M600	0600	2200	A-557 SA/IR
										0600	2200	*SGL Exp 10/16
DIP SITES/REPEATER/IP/HELISPOTS												
Name	Latitude	Longitude	Remarks	Name	Latitude	Longitude	Remarks					
*See pilot map												



*Interagency Incident
Management*

ICS 205 - INCIDENT RADIO COMMUNICATIONS PLAN

CONTROLLED UNCLASSIFIED
INFORMATION//BASIC

1. Incident Name: CALDOR WEST Z1	2. Date/Time Prepared Date: 10/10/2021 Time: 1930	3. Operational Period: Date From: 10/11/2021 Time From: 0700 Date To: 10/12/21 Time To: 0700
---	--	---

4. Communications									
Ch#	Function	Name	Assigned To	Rx Freq	Rx Tone	Tx Freq	Tx Tone	Notes	
1	COMMAND	CMD 109	WEST BRANCHES	170.3875N	114.8	162.1750N	114.8	BIG HILL	
2	COMMAND	CMD 104	WEST BRANCHES	170.7625N	114.8	165.6250N	114.8	NORTH OF HWY 50 BETWEEN DP 21 AND DP 24	
3	COMMAND	CMD 1	WEST BRANCHES	170.9750N	114.8	168.7000N	114.8	LEEK SPRINGS	
4	COMMAND	CMD 11	WEST BRANCHES	170.6875N	114.8	166.5750N	114.8	GRIZZLY FLATS AREA	
5	COMMAND	CMD 113	WEST BRANCHES	170.3125N	114.8	165.6750N	114.8	KIRKWOOD MOUNTAIN	
6	COMMAND	CMD 116	WEST BRANCHES	171.0375N	114.8	162.5875N	114.8	SIERRA SKI RESORT	
7	COMMAND	CMD 105	WEST BRANCHES	172.4500N	114.8	166.9375N	114.8	SACRAMENTO HILL	
8	TACTICAL	NIFC T1	DIV G/T/W	168.0500N		168.0500N			
9	TACTICAL	NIFC T6	WRIGHT LAKE/MET	166.7750N		166.7750N		WRIGHT LAKE & MET REPAIR	
10	TACTICAL	NIFC T3	CODY REPAIR	168.6000N		168.6000N			
11	TACTICAL	NIFC T7	KIRKWOOD REPAIR	168.2500N		168.2500N			
12	A/G CMD	A/G CMD	ALL BRANCHES	167.9500N		167.9500N		AIR TO GROUND	
13	A/G TAC	A/G TAC	A/G BUCKETS	166.6125N		166.6125N			
14									
15	MEDICAL	CALCORD	ALL BRANCHES	156.0750N	156.7	156.0750N	156.7	EMS COORDINATION ONLY	
16	EMERGENCY	GUARD 16	ALL BRANCHES	168.6250N		168.6250N	110.9	EMERGENCY USE ONLY	
17									
18									
19									
20	EMERGENCY	GUARD 16	ALL BRANCHES	168.6250N		168.6250N	110.9	EMERGENCY USE ONLY	

5. Special Instructions
 CALDOR COMMUNICATION ICP HEAVENLY 408-510-8169

6. Prepared by (Communications Unit Leader): Name: TERRY BRINSON	Signature: _____
ICS 205 - CONTROLLED UNCLASSIFIED INFORMATION//BASIC	
NIMS IAP	Date/Time: 10/10/2021 1930

ICS 205 - INCIDENT RADIO COMMUNICATIONS PLAN

CONTROLLED UNCLASSIFIED
INFORMATION//BASIC

1. Incident Name: TAHOE BASIN I/A	2. Date/Time Prepared Date: 10/10/21 Time: 1800	3. Operational Period: Date To: 10/12/21 Time To: 0700						
4. Communications								
Ch#	Function	Name	Assigned To	Rx Freq	Rx Tone	Tx Freq	Tx Tone	Notes
1	FOREST NET	ENF T9	ALL DIVS	171.5250N	156.7	162.7500N	T9-100.0	HAWKINS PK
2	FOREST NET	TMU T2	ALL DIVS	172.3750N	156.7	164.9625N	T2-123.0	EAST PK
3	FOREST NET	HTF T3	ALL DIVS	173.7750N		165.7500N	T3-131.8	HAWKINS PK
4	TACTICAL	NIFC T1	ALL DIVS	168.0500N		168.0500N		
5	TACTICAL	NIFC T2	ALL DIVS	168.2000N		168.2000N		
6	TACTICAL	R5T4	ALL DIVS	166.5500N		166.5500N		
7	TACTICAL	R5T5	ALL DIVS	167.1125N		167.1125N		
8	TACTICAL	VFIRE22	ALL DIVS	154.2650N	156.7	154.2650N	156.7	
9	TACTICAL	VFIRE23	ALL DIVS	154.2950N	156.7	154.2950N	156.7	
10	TACTICAL	VFIRE 26	ALL DIVS	154.3025N	156.7	154.3025N	156.7	
11	TACTICAL	CCD SOA	ALL DIVS	171.6750N		171.6750N		AKA" BLM SOA"
12	TACTICAL	NDF RED 1	ALL DIVS	159.3450N		159.3450N		
13	AIR TO GROUND	A/G 14	ALL DIVS	167.5000N		167.5000N		I/A A/G-ENF/TMU
14	AIR TO GROUND	A/G 51	ALL DIVS	168.3125N		168.3125N		I/A A/G-SIERRA FRONT
15	MEDICAL	CALCORD	ALL DIVS	156.0750N	156.7	156.0750N	156.7	MEDICAL COORDINATION
16	EMERGENCY	GUARD	EMERGENCY	168.6250N		168.6250N	110.9	EMERGENCY CONTACT
17								
18								
19								
20	EMERGENCY	GUARD	EMERGENCY	168.6250N		168.6250N	110.9	EMERGENCY CONTACT
5. Special Instructions								
CALDOR COMMUNICATION ICP HEAVENLY 408-510-8169								
6. Prepared by (Communications Unit Leader): Name: TERRY BRINSON								
ICS 205 - CONTROLLED UNCLASSIFIED INFORMATION//BASIC								
								Signature: _____
								Date/Time: 10/10/2021 1800

ICS 205 - INCIDENT RADIO COMMUNICATIONS PLAN

CONTROLLED UNCLASSIFIED
INFORMATION//BASIC

1. Incident Name: ENF/AEU INITIAL ATTACK ONLY	2. Date/Time Prepared Date: <input type="checkbox"/> 10/10/2021 Time: 1800	3. Operational Period: Date To: 10/12/21 Time To: 0700
---	---	---

4. Communications								
Ch#	Function	Name	Assigned To	Rx Freq	Rx Tone	Tx Freq	Tx Tone	Notes
1	COMMAND	ENFADM 1		172.3250N	156.7	165.2250N	110.9	FOREST ADMIN Tone 1-Alder
2	COMMAND	ENFADM 2		172.3250N	156.7	165.2250N	123.0	FOREST ADMIN Tone 2-Leek Springs
3	COMMAND	ENFADM 4		172.3250N	156.7	165.2250N	136.5	FOREST ADMIN Tone 4-Big Hill
4	COMMAND	ENFADM 6		172.3250N	156.7	165.2250N	156.7	FOREST ADMIN Tone 6-Echo Summit
5	COMMAND	XAM CT10		154.7625N	123.0	159.1800N	107.2	AMADOR CMD Tone 10-Leek Springs
6	COMMAND	XAM CT11		154.7625N	123.0	159.1800N	114.8	AMADOR CMD Tone 11-Zion Mountain
7	COMMAND	XED CT11		155.9025N	186.2	159.2775N	114.8	EL DORADO CMD Tone 11-Union
8	COMMAND	XED CT1		155.9025N	186.2	159.2775N	110.9	EL DORADO CMD Tone 1-Alder
9	COMMAND	XED CT4		155.9025N	186.2	159.2775N	136.5	EL DORADO CMD Tone 4-Big Hill
10	TACTICAL	R5 T4		166.5500N		166.5500N		REGION 5 TAC 4
11	TACTICAL	R5 T5		167.1125N		167.1125N		REGION 5 TAC 5
12	TACTICAL	R5 T6		168.2375N		168.2375N		REGION 5 TAC 6
13	TACTICAL	CDF T2		151.1600N	192.8	151.1600N	192.8	
14	TACTICAL	CDF T8		151.3700N	192.8	151.3700N	192.8	
15	AIR TO GROUND	A/G TAC	AIR TO GROUND	164.1375N		164.1375N		
16	EMERGENCY	GUARD 8	EMERGENCY	168.6250N		168.6250N	110.9	
17								
18								
19								
20	EMERGENCY	GUARD 8	EMERGENCY	168.6250N		168.6250N	110.9	

5. Special Instructions

CALDOR COMMUNICATION ICP HEAVENLY 408-510-8169

6. Prepared by (Communications Unit Leader): Name: TERRY BRINSON	Signature: _____
ICS 205 - CONTROLLED UNCLASSIFIED INFORMATION//BASIC	Date/Time: <input type="checkbox"/> 10/10/2021 1800

ICS 205 - INCIDENT RADIO COMMUNICATIONS PLAN

CONTROLLED UNCLASSIFIED
INFORMATION/BASIC

1. Incident Name: CALDOR EAST Z3	2. Date/Time Prepared Date: 10/10/2021 Time: 1930	3. Operational Period: Date From: 10/11/2021 Time From: 0700 Date To: 10/12/21 Time To: 0700
---	--	---

4. Communications									
Ch#	Function	Name	Assigned To	Rx Freq	Rx Tone	Tx Freq	Tx Tone	Notes	
1	COMMAND	CMD 5	EAST BRANCHES	169.7500N	146.2	167.1000N	146.2	MONUMENT PK LINKED W/ C67, C93, C96	
2	COMMAND	CMD 93	EAST BRANCHES	166.6875N	146.2	162.9375N	146.2	SCOUT LINKED W/C5, C67, C96	
3	COMMAND	CMD 67	EAST BRANCHES	172.0750N	146.2	162.2000N	146.2	KIRKWOOD MT, LINKED W/C5, C93, C96	
4	COMMAND	CMD 96	EAST BRANCHES	169.9625N	146.2	165.0500N	146.2	PYRAMID PEAK LINKED W/C5, C93, C67	
5	COMMAND	CMD 56	WEST BRANCHES	172.3500N	114.8	163.0375N	114.8	MONUMENT PK LINK TO WEST	
6	TACTICAL	NIFC T1	DIV I/M	168.0500N		168.0500N			
7	TACTICAL	NIFC T6	DIV O/P	166.7750N		166.7750N			
8	TACTICAL	NIFC T3	DIV Q/R	168.6000N		168.6000N			
9	TACTICAL	NIFC T7	PLUMMER REPAIR	168.2500N		168.2500N			
10	TACTICAL	VFIRE 24	MEYERS REPAIR	154.2725N	156.7	154.2725N	156.7		
11	TACTICAL	VFIRE 25	NIGHT OPS	154.2875N	156.7	154.2875N	156.7		
12	A/G CMD	A/G CMD	ALL BRANCHES	167.9500N		167.9500N			
13	A/G TAC	A/G TAC	A/G BUCKETS	166.6125N		166.6125N			
14									
15	COORDINATION	CALCORD	ALL BRANCHES	156.0750N	156.7	156.0750N	156.7	MEDICAL COORDINATION	
16	EMERGENCY	GUARD 16	ALL BRANCHES	168.6250N		168.6250N	110.9	EMERGENCY USE ONLY	
17									
18									
19									
20	EMERGENCY	GUARD 16	ALL BRANCHES	168.6250N		168.6250N	110.9	EMERGENCY USE ONLY	

CALDOR COMMUNICATION ICP HEAVENLY 408-510-8169

6. Prepared by (Communications Unit Leader): Name: TERRY BRINSON	Signature: _____
ICS 205 - CONTROLLED UNCLASSIFIED INFORMATION/BASIC	NIMS IAP Date/Time: 10/10/21 1930

MEDICAL PLAN (ICS 206)

1. Incident Name: <p style="text-align: center;">CALDOR</p>		2. Operational Period: Date From: 10/11/21 Date To: 10/12/21 Time From: 0700 Time To: 0700					
3. Medical Aid Stations:							
Name	Location	Contact Number/Freq	Paramedics				
MEDICAL UNIT- Kevin Palm Jeff Kaiser (T)	ICP	909-921-8490 208-390-2326	Yes				
MOBILE MEDICAL SUPPORT TRAILER	EL DORADO BASE CAMP	805-813-3858 909-9084778	Yes				
EL DORADO	CAMINO ECC SLT DISPATCH 911	530-647-5220 530-542-6148	Yes				
AMERICAN LEGION	CAMINO ECC SLT DISPATCH 911	530-647-52220 530-5426148	Yes				
4. Transportation (indicate air or ground):							
Ambulance Service	Type of Aircraft & Capability	Contact Number	Level of Service				
H-3SH	BLS, SHORT HAUL, LITTER, TYLER OLSON-EMPF AT HELI BASE	CALDOR COMM	ALS				
CAREFLIGHT	AIR AMB ALS - NO HOIST	530-647-5220	ALS				
CALSTAR 6 (Located at Tahoe airport)	AIR AMB ALS - NO HOIST	530-647-5220	ALS				
5. Hospitals:							
Hospital Name	Address,	Contact Number(s)/ Frequency	Travel Time		Trauma Center	Burn Center	Helipad
	Lat & Long		Air	Ground			
SN MEMORIAL HOSPITAL (LEVEL 3)	2170 South Ave. SLTahoe, CA 96150 38° 54.72', W119° 59.72'	530-541-3420	2MIN	5 MIN	Level 3	<input type="checkbox"/>	<input checked="" type="checkbox"/>
RENOWN REGIONAL MEDICAL CENTER (LEVEL 2)	1156 Mill St. Reno, NV 89502 N 39° 31.51', W119° 47.75'	775-982-2005	20 MIN	1.5 HRS	Level 2	<input type="checkbox"/>	<input checked="" type="checkbox"/>
SUTTER ROSEVILLE MEDICAL CENTER (LEVEL 2)	1 Medical Plaza Dr. Roseville, CA 95661 N 38° 45.97', W 121° 14.87'	916-781-1200	45 MIN	3 HRS	Level 2	<input type="checkbox"/>	<input checked="" type="checkbox"/>
UC DAVIS MEDICAL CENTER (LEVEL 1 TRAUMA/BURN)	2315 Stockton Blvd. Sacramento, CA 95817 N 38° 33.32', W 121° 27.35'	916-703-6576	45 MIN	3 HRS	Level 1	<input checked="" type="checkbox"/>	<input checked="" type="checkbox"/>
6. Special Medical Emergency Procedures							
<p>Line Emergency Crew Supervisor will contact Division Supervisor with patient complaint/condition and location. - Division Group Supervisor Contacts: 1. Closest EMS resource 2. Communications Unit - Communications Unit Contacts: 1. Ground or Air ambulance as requested. 2. Operations 3. Safety 4. Medical Unit - Division Supervisor or designee will serve as point of contact and run medical emergency on assigned channel. 1. A pre-assigned tactical frequency (i.e. CALCORD) should be used for IWI and only for duration of the emergency. - Communications Unit will clear the Command channel for emergency traffic as needed for duration of the need.</p> <p>Camp Emergency Contact Medical Unit with patient complaint/condition and location. Medical staff will respond to stabilize the patient. - Medical Unit contacts 1. Communications 2. Safety 3. Logistics 4. Operations 5. Crew Supervisor 6. Comp/Claims</p>							
<input type="checkbox"/> Check box if aviation assets are utilized for rescue. If assets are used, coordinate with Air Operations.							
7. Prepared by (Medical Unit Leader): Kevin Palm (909)921 8490				Signature: <i>/s/ Kevin Palm</i>			
8. Approved by (Safety Officer): Kevin Southerland				Signature: <i>/s/ Kevin Southerland/ Jack Wise</i>			
ICS 206		NIMS IAP		Date/Time:		10/10/21 1800	

MEDICAL PLAN (ICS 206 WF)

Controlled Unclassified Information//Basic

Medical Incident Report

FOR A NON-EMERGENCY INCIDENT, WORK THROUGH CHAIN OF COMMAND TO REPORT AND TRANSPORT INJURED PERSONNEL AS NECESSARY.

FOR A MEDICAL EMERGENCY: IDENTIFY ON SCENE INCIDENT COMMANDER BY NAME AND POSITION AND ANNOUNCE "MEDICAL EMERGENCY" TO INITIATE RESPONSE FROM IMT COMMUNICATIONS/DISPATCH.

Use the following items to communicate situation to communications/dispatch.

1. CONTACT COMMUNICATIONS / DISPATCH (**Verify correct frequency prior to starting report**)

Ex: "Communications, Div. Alpha. Stand-by for Emergency Traffic."

2. INCIDENT STATUS: *Provide incident summary (including number of patients) and command structure.*

Ex: "Communications, I have a Red priority patient, unconscious, struck by a falling tree. Requesting air ambulance to Forest Road 1 at (Lat./Long.) This will be the Trout Meadow Medical, IC is TFLD Jones. EMT Smith is providing medical care."

Severity of Emergency / Transport Priority	<input type="checkbox"/> RED / PRIORITY 1 Life or limb threatening injury or illness. Evacuation need is IMMEDIATE <i>Ex: Unconscious, difficulty breathing, bleeding severely, 2° – 3° burns more than 4 palm sizes, heat stroke, disoriented.</i> <input type="checkbox"/> YELLOW / PRIORITY 2 Serious Injury or illness. Evacuation may be DELAYED if necessary. <i>Ex: Significant trauma, unable to walk, 2° – 3° burns not more than 1-3 palm sizes.</i> <input type="checkbox"/> GREEN / PRIORITY 3 Minor Injury or illness. Non-Emergency transport <i>Ex: Sprains, strains, minor heat-related illness.</i>	
Nature of Injury or Illness & Mechanism of Injury		<i>Brief Summary of Injury or Illness (Ex: Unconscious, Struck by Falling Tree)</i>
Transport Request		<i>Air Ambulance / Short Haul/Hoist Ground Ambulance / Other</i>
Patient Location		<i>Descriptive Location & Lat. / Long. (WGS84)</i>
Incident Name		<i>Geographic Name + "Medical" (Ex: Trout Meadow Medical)</i>
On-Scene Incident Commander		<i>Name of on-scene IC of Incident within an Incident (Ex: TFLD Jones)</i>
Patient Care		<i>Name of Care Provider (Ex: EMT Smith)</i>

3. INITIAL PATIENT ASSESSMENT: *Complete this section for each patient as applicable (start with the most severe patient)*

Patient Assessment: See IRPG page 106

Treatment:

4. TRANSPORT PLAN:

Evacuation Location (if different): *(Descriptive Location (drop point, intersection, etc.) or Lat. / Long.)* Patient's ETA to Evacuation Location:

Helispot / Extraction Site Size and Hazards:

5. ADDITIONAL RESOURCES / EQUIPMENT NEEDS:

Example: Paramedic/EMT, Crews, Immobilization Devices, AED, Oxygen, Trauma Bag, IV/Fluid(s), Splints, Rope rescue, Wheeled litter, HAZMAT, Extrication

6. COMMUNICATIONS: Identify State Air/Ground EMS Frequencies and Hospital Contacts as applicable

Function	Channel Name/Number	Receive (RX)	Tone/NAC *	Transmit (TX)	Tone/NAC *
COMMAND					
AIR-TO-GRND					
TACTICAL					

7. CONTINGENCY: **Considerations:** *If primary options fail, what actions can be implemented in conjunction with primary evacuation method? Be thinking ahead.*

8. ADDITIONAL INFORMATION: *Updates/Changes, etc.*

REMEMBER: Confirm ETA's of resources ordered. Act according to your level of training. Be Alert. Keep Calm. Think Clearly. Act Decisively.

Resource Advisor Update

Avoidance areas for cultural and sensitive resources are being flagged within Divisions. If work needs to occur in areas identified by the following flagging/placard, please contact a REAF assigned to your Branch.

Avoidance Areas

Eldorado NF

**Pink/Black Checkered Flagging
and yellow placards**



LTBMU / Humboldt-Toiyabe NF

**Yellow and Green Paired
Flagging**



Eldorado NF Lead READ – Jen House

Lake Tahoe Basin Lead READ – Emma Williams

Caldor Suppression Repair Guidelines

Frequently coordinate repair efforts with REAFs on repair priorities and specific guidelines. The following standards are to be met during suppression repair operations:

Handlines, Dozer Lines, and Safety Zones

- Construct waterbars, rolling dips, or chunk/waffle all fire lines on slopes >10%.
- **Pull outside berms back** into the control line and distribute topsoil evening. Recontour the surface to allow for drainage. If line follows ridge, divert water equally to both sides of the ridge. Pull slash back over line.
- **Chunking** involves using an excavator to decompact and roughen surfaces of control lines by creating up to 1ft x ft divets in a continuous egg carton pattern. Coordinate with REAFs for guidelines.
- **Water-bars** will be constructed at a 35 – 40° angle across slope. Downslope end must be open and should discharge into vegetated or protected surface.
 - Water bar depths for **dozer lines** should be at least 6 inches; total height from bottom of ditch to the top of the waterbar should average at least 18 inches and not exceed 24 inches.
 - Water bar depths for **hand lines** should be at least 4 inches; total height from bottom of ditch to top of water bar should average at least 8 inches and not exceed 12 inches. Higher water bars do not necessarily mean better water bars.

Fire Line % Slope)	Maximum distance apart (feet)
1 - 10	Every 100
10 - 30	Every 75 - 100
30 - 50	Every 50 – 75
>50	Every 50

- **Conceal or hide points of access** using the landscape and available materials. In high OHV use areas, block the first 50 – 100ft of the dozer line with boulders or chunk if not covered by logs, brush, or other veg. Downed trees should be dirty to prevent cutting/collection.
- **Remove deposited or perched soil and suppression debris from streams, watercourses, swales, or draws.** Do not remove more than necessary to prevent damaging watercourse. Restore impacted channel shape to adjacent channel shape. Spread removed soil across fire line. **Contact REAF before starting stream, drainage, wetland, or meadow repair.**
 - Do not remove woody debris that was in the channel prior to the fire.

Roads

- Install waterbars where waterbars previously existed.
- Install or maintain rolling dips where a rolling dip previously existed.
- Clean culverts plugged with soil and rock resulting from fire suppression actions.
- **Remove all slash and debris from culvert** inlets/outlets resulting from suppression actions.
- Clean and grade ditch lines and lead off ditches as necessary.
- Water roads for dust abatement.
- Remove sediment from watercourse crossing locations and stabilize watercourse crossing approaches as appropriate for pre-existing road use.

Caldor Suppression Repair Guidelines

Vegetative Debris (activity fuels) Treatment

- Concentrations of slash created by fire suppression activities along roadways and among structures should be treated to reduce fire hazard. Treatments include mastication, lopping and scattering, and chipping. Where feasible, vegetation treated by mastication or lopping and scattering should not exceed 18 inches in height. Chipped material should be spread across the cleared area. Chip piles should not exceed 6” in depth on the ENF or 3” in depth on the TMU.
- Concentrations of slash within 100 feet of habitable structures should be removed or chipped.

Fences

- Repair fences damaged during fire suppression operations. Intent of fence repair is to prevent livestock or other animals from escaping.

Compensation Claims

- For all other property damage beyond the scope of the Suppression Repair Plan, please document the damage on an ICS 213 and submit it to the Incident Management Team Compensation Claims Unit.

Housekeeping

- **Remove and dispose of trash or litter** from all fire lines, camps, parking and staging areas.
- Remove flagging from line and trail.
- Close gates that were opened and repair any fences and gates cut or damaged by fire suppression resources.

Thank you for your safe and diligent work repairing your National Forest lands!



*Interagency Incident
Management*



CODE OF CONDUCT INCIDENT PERSONNEL

Each individual on this incident is responsible for:

- Being *ready and able* to perform their assigned duties effectively
- Conducting themselves in a manner that treats people with dignity, equality, courtesy, and respect
- Abiding by agency ethics and conduct regulations
- Reporting any harassment or other inappropriate behavior

Each individual on this incident has the right to:

- Work in an environment characterized by safe work practices
- Work in a fair and harassment free environment
- Say “No” to unwelcome advances or requests for favors
- File complaints or grievances through appropriate avenues

There is zero tolerance for inappropriate behavior while assigned to the incident, including

- Illegal drug use
- Alcohol use
- Unsafe work practices and activities
- Discrimination
- Sexual harassment
- Fighting, threatening and abusive behaviors
- Using social media and electronic communication devices for personal business while engaged in fire assignment duties
- Other violations of USDA and Forest Service standards of conduct

Failure to adhere to the Code of Conduct could result in dismissal from the incident, with notification to your home unit.

The public expects our best efforts; they see us as professionals in what we say and do. Let's continue to show them we are!

HUMAN RESOURCES MESSAGE

October 11, 2021

YOUR RIGHTS AND RESPONSIBILITIES

Rights:

To work in a harassment-free environment where people treat one another with dignity, equity, courtesy and respect.

To say "no" to unwelcome advances or requests for favors.

To file complaints or grievances through appropriate avenues.

Responsibilities:

To behave in a manner that treats people with dignity, equity, courtesy and respect.

To abide by agency and incident ethics and conduct regulations.

To report any harassment or other inappropriate behavior you observe or experience

HR staff is here to assist in creating a positive work environment for all. If issues arise please don't hesitate to contact me via the information below or in HR Office trailer.

Human Resources Specialist– Jon Tipton
971.347.7314 (call/text) or email @ jonathan.tipton@usda.gov



MEDIA – The California State Penal Code Section 409.5(d) allows the news media to enter scenes of disaster, riot or civil disturbance. Properly identified members of the news media should not be restricted from entering locations specified within the code. However, this does not include crime scenes, private property and the news media may not interfere with incident operations. Please always treat the media with courtesy and respect and advise the Information Office if there are any issues.

PHOTOGRAPHS AND VIDEOS OF INCIDENT – Please refrain from posting incident related videos to your personal social media. It may be unsafe to shoot photos or video and a firefighter who is concentrating on a camera loses their situational awareness. When this happens it could reflect poorly on all that are attached to this incident.

Please email photo and video submissions to 2021.Caldor@firenet.gov

MAIL – If you need to send or receive mail, please see the mailing address below. Sending letters, cards to your loved ones, or mailing bills. Please stamp your mail and it will be taken to the post office for you. If you don't have a stamp, we will provide one.

Mailing address for the Caldor Fire:

**Caldor Fire Camp
Attention :(Your name &RO/Crew Name)
3860 Saddle Road
South Lake Tahoe, CA 96150**

Fire Information Resources for the Public:

Please feel free to share the following Inciweb, Facebook, Twitter, email updates, information line and QR code with the public. These are updated regularly and are the best links for current Caldor Fire information on both the Eldorado and Lake Tahoe National Forests.


 <https://inciweb.nwcg.gov/7801>

Information Line: (530) 303-2455



 @EldoradoNF & @LakeTahoeUSFS

Email update List: <http://tinurl.com/CaldorSignUp>

 @EldoradoNF & @LakeTahoeUSFS



Training Message



To receive training credit for the Caldor Fire

- ◆ Email me your Completed 225 Eval's
- ◆ Fill out the online check in & exit interview
(QR code attached)
- ◆ Trainee's home unit
mailing address
- ◆ Evaluator's home unit
job title and name
- ◆ Position Task Book
Tasks sign-off

One day prior to demob, please start the close out procedures with us. We are working remotely and will do our best to answer any questions you may have. Please call or email me with your questions.

Thanks for your cooperation.

Morgan Madruga

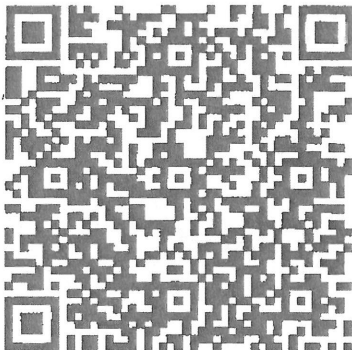
TRAINING SPECIALIST TRAINEE

Merced Fire Department

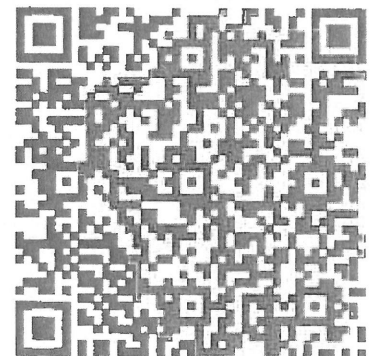
99 E 16th st Merced, Ca 95340

209-386-2731

MorganMadruga@yahoo.com



Online Training Check-In



TNSP - Evaluation of Trainer

FINANCE MESSAGE

Fire Name: Caldor Fire
Fire Number: CA-ENF-024030
Accounting Code: P5N8GM21
Email: 2021.caldor.finance@firenet.gov
Hotline: 530-330-5450

If you were originally ordered on a CALFIRE contract and have not submitted a VIPR contract and RO or received an EERA (Fed contract) – CONTACT FINANCE TODAY you might not get paid.

Finance Documents Needed upon “Check In” (If Not Already Submitted):

Please email these documents or scan the QR Code below, attach & submit.			
Agency Equipment/ Crews: <ul style="list-style-type: none"> • Manifest - showing employment type (GS or WG) or AD rates if applicable 	Overhead: <ul style="list-style-type: none"> • AD/Casual Hire Form • If regular Agency please ensure “GS” or “WG” is written on your first CTR 	Contract Equipment/ Contract Crews: <ul style="list-style-type: none"> • Agreement • Manifest • Resource Order • Inspections 	Cooperator: <ul style="list-style-type: none"> • Cooperative Agreement • Resource Order

Please submit your CTR/Shift Tickets using the QR code or email address below:

Don't Forget to put your RO # on your CTR/Shift Ticket – final travel CTR's must be signed by supervisor on incident - Thank You

Please Include the Word “Equipment” for Federal Contract Equipment or “Time” for Federal Overhead & Crews in the Subject Line of the Email





Local Government Resources on CFAA
If you are demobing and there is no OES AREP
there:

- Have the FSC or IC review and sign your 42s
 - You give the incident the pink copy
 - You keep the gold copy
- You mail the white and green (if it has a green)
to OES Headquarters per the instructions on the
42

**OES JOB AIDS, FORMS, F-42 SAMPLES AND
CFAA AGREEMENT**



**Your OES Fire & Rescue Assistant Chief
Kit Bailey
530-307-1307**

Replacement of Government Property Loss or Damage



Email ALL documentation to
COMP/CLMS at
2021.caldor.finance@firenet.gov.
For questions contact Lisa Spahr (T)
at 530-708-2587 or Pearl Cowan
(virtual) at 541-969-2396

COMP/CLMS is located at the
Caldor ICP.

- Complete OF-289-
Property Loss or Damage
Report (2 pages)
- Pictures of damaged
equipment.
- Keep damaged equipment
for turn in.
- Repair or replacement
order/invoice or receipt if
applicable; OR an
estimated cost to repair or
replace damaged
equipment.
- Copy of your Resource
Order.
- If applicable and other
than a Federal employee,
copy of your state
agreement or contract.
- ANY additional
information dealing with
the claim, i.e., general
message(s), hand-written
notes, letters, etc. The
more information you
provide the better.
- Ensure you have all
applicable signatures

Hotel Acquisition Process

Due to continuing bear issues at the ICP as well as predicted inclement weather, the incident is **requiring** individual procurement of hotel accommodations. This is for lodging only. The process below discusses financial procedure and documentation:

If you are a **local agency dispatched through CFAA**, you will need to acquire an S# prior to demob. This number will also be entered on your F-42 form.

Federal resources with a travel card will be processed through your agency's travel reimbursement process. Finance will provide a 213 with approval statement upon demob, if required by your agency.

All other non-federal resources, or federal resources that do not have purchasing capability, complete the following:

ADs who are able to pay and get reimbursed for travel will need to pay for lodging and get reimbursed through your normal reimbursement process. You will be given a 213 with authorization statement from the finance section during demob.

ADs and Seasonal Federal Employees who are unable to pay for lodging, the buying team may be able to assist with purchasing your accommodations. Inquire with the incident finance section. Federal resources who have the crew boss card option should use this as a first option.

In accordance with each individual contract, contractors shall pay for lodging and submit receipts for additions to your invoice (OF-286). Itemized receipts are required by the finance section during demob. Copies may also be submitted electronically or hard copy during assignment to save time at demob. Please be sure to write your resource order number on the document. Also, please note that double occupancy may be required on many contracts.

If you're not in one of these categories or uncertain, finance can help you check. Please use the hotline number: 530-330-5450 or email: 2021.Caldor.finance@firenet.gov If emailing include your resource number, type of resource and contact phone number.

West Side, Branch 1: *Hotel and Dinners*

Resources working the West side of the incident and briefing at the El Dorado fairgrounds are expected to be self-sufficient for dinners and hotel accommodations. You will be expected to procure your own hotel and remain within the per diem rates of \$135 a night before tax and \$28 for dinner after tax and tip. Breakfast, sack lunches, and hydration products will be provided at briefing. Branch 1 will advise if you need to return to the fairgrounds in the evening.

East side Branch 3 Hotels

All meals are provided by the incident. You will be responsible to acquire your own lodging. You must assure all nights are within the \$135 per diem rate. The following hotel options are available within per diem rates. To avoid rate changes, book your rooms for the anticipated duration of your assignment. If you demob early cancel any remaining nights.

Hard Rock Hotel. Promo code "USFOREST"



Lake Tahoe Resort Hotel (Large Vehicle parking is limited)



Harveys Lake Tahoe (large vehicle parking lot is at large parking lot at Harrahs)





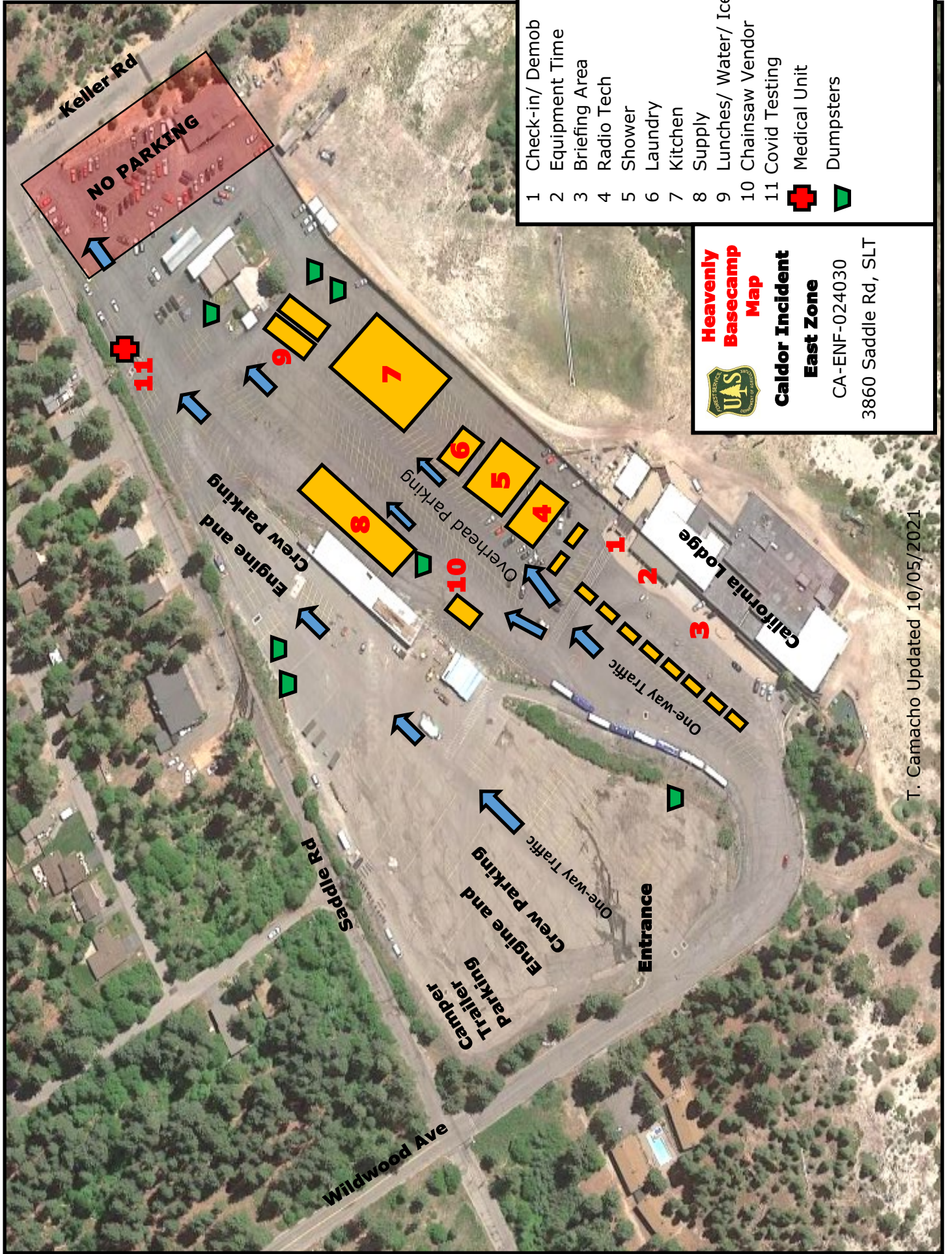
*Interagency Incident
Management*

CALDOR Fire Services

Hours of operation:

- **Kitchen:** 0600-0930, 1800-2130 (Daily)
- **Supply:** 0600-2100 (Daily)
- **Ground Support:** 0600-2000 (Daily)
- **Fuel Tenders:** (Daily)
 - ❖ **S. Lake Tahoe-** 0600-2030
 - ❖ **El Dorado camp-** 0600-1800
- **Weed Wash:** 0900-1900 (Daily)
- **Laundry:** 0500-2200 (Daily)
- **Shower:** 0500-1300, 1500-2200 (Daily)
- **Saw Shop:** 0600-2030 (Daily)
- **Medical Services:**
 - ❖ **ERL Covid Trailer (IPC)** 0700-2130
 - ❖ **Madison Medical Trailer (S. Lake Tahoe)** 0600-2200
 - ❖ **Adventure Medics Trailer (El Dorado Camp)**
Covid testing. 0600-1800, After hours call back,
Susan Oxley (503) 440-0771

Date & Time Order was Placed		ORDER #	DIV	Location & Time For Delivery (DIV, LZ, DP, Lat/Long)			
1000 ft Hose Kit			Quantity Needed				
10 ea, 100' x 1 1/2" Hose; 10 ea 100' x 1" Hose; 10 ea 1 1/2" Gated Wyes; 10 ea 1 1/2" to 1" reducers; 10 ea 1" nozzels							
2000 FT Hose Kit			Quantity Needed				
20 ea, 100' x 1 1/2" Hose; 20 ea 100' x 1" Hose; 20 ea 1 1/2" Gated Wyes; 20 ea 1 1/2" to 1" reducers; 20 ea 1" nozzels							
3000 FT Hose Kit			Quantity Needed				
30 ea, 100' x 1 1/2" Hose; 30 ea 100' x 1" Hose; 30 ea 1 1/2" Gated Wyes; 30 ea 1 1/2" to 1" reducers; 30 ea 1" nozzels							
FULL HOSE KIT				HALF HOSE KIT			
1 1/2" Hose (5000 Ft), 1" Hose (2000 Ft), 3/4" Hose (2000 Ft), 1 1/2" Gated Wyes (25 ea), 3/4 Wyes (25 ea), 1 1/2" to 1" Reducers (25 ea), 1" to 3/4" Reducers (25 ea), 1 1/2" KK Nozzels (25 ea), 1" KK Nozzels (25 ea), 3/4" Nozzels (25 ea), Hose Clamps (10 ea), Class A Foam (10 Gallons)				1 1/2" Hose (2500 Ft), 1" Hose (1000 Ft), 3/4" Hose (1000 Ft), 1 1/2" Gated Wyes (12 ea), 3/4 Wyes (12 ea), 1 1/2" to 1" Reducers (12 ea), 1" to 3/4" Reducers (12 ea), 1 1/2" KK Nozzels (12 ea), 1" KK Nozzels (12 ea), 3/4" Nozzels (12 ea), Hose Clamps (5 ea), Class A Foam (10 Gallons)			
Total Full Hose Kits Needed:				Total Half Hose Kits Needed:			
Item	NFES	Description	Amount	Item	NFES	Description	Amount
MISC ITEMS				29	000909	Backpack Pump	
1	000030	BATTERY - SIZE AA		30			
2	000033	BATTERY - SIZE D		31			
3	007000	BATTERY - AAA,		32			
4	000856	DOUBLE MALE 1 1/2"		33			
5	000857	DOUBLE FEMALE 1 1/2"		34			
6	000916	DOUBLE MALE, 1"		Hose Kit Accessories			
7	000710	DOUBLE FEMALE, 1"		7	000006	ADAPTER -1 1/2" NH-F, - 1 1/2" NPSH-M	
8	000416	INCREASER - 1" TO 1 1/2"		8	000007	ADAPTER -1 1/2" NPSH-F, - 1 1/2" NH-M	
9	002235	INCREASER - 3/4" TO 1"		9	000693	BERM - PORTABLE PUMP	
10	000733	REDUCER - 1" TO 3/4"		10	000046	CLAMP - HOSE,	
11	000010	REDUCER - 1 1/2" to 1"		11	000856	DOUBLE MALE 1 1/2"	
12	001220	HOSE -HARDLINE		12	000857	DOUBLE FEMALE 1 1/2"	
13	000932	HOSE - 1"		13	000115	HOSE - SUCTION, 1 1/2" NH X 10'	
14	000933	HOSE - 1 1/2"		14	000137	NOZZLE - PLASTIC, 60 GPM, 1 1/2"	
15	001016	HOSE - 3/4"		15	000138	NOZZLE - PLASTIC, 35 GPM, 1"	
16	001082	NOZZLE - KK 1 1/2"		16	000024	NOZZLE - TWIN TIP	
17	001081	NOZZLE - KK, 1"		17	000744	PACKSACK - WATERPROOF,	
18	000136	NOZZLE - 3/4"		18	000417	REDUCER -2" NPSH-F - 1 1/2" NH-M	
19	000230	TEE - 1 1/2" 1 1/2" X 1"		19	000145	PRIMER - HAND, MARK III	
20	001809	TEE - 1" x 1" X 3/4"		20	000114	SUCTION HOSE 1 1/2" NH X 3'	
21	000731	TEE - HOSELINE 1 1/2"		21	000212	VALVE - FOOT, 1 1/2"	
22	002240	TEE - HOSELINE, 1"		22	000228	VALVE - CHECK & BLEEDER 1 1/2"	
23	001201	VALVE - SHUT OFF, 1"		23	000229	VALVE - P. RELIEF, 1 1/2"	
24	001207	VALVE - SHUT OFF, 1 1/2"		24	000235	WRENCH - SPANNER	
25	000228	VALVE - CHECK 1 1/2"		25	000231	WYE, GATED, 1 1/2"	
26	000835	VALVE - SHUT OFF, 3/4" NH		26	000218	MRK3 GAS CAN	
27	000259	WYE, GATED, 1"		27	000113	FUEL LINE ASSEMBLY - 1/4" X 5'	
28	000904	WYE, GATED, 3/4"		28	001145	FOAM CLASS A	
<p>Type 1 Spike Kit (1 Crew 24 hr's), 80 Gallons of Water, 8 Case of Gatorade, 6 Case of MRE's, 40 Sack Lunches, 10 Gallons of Gasoline (safety can-NOT mixed, tagged), 40oz 50:1 2 cycle mix, 1 Yellow tag "MIX", 4 gallons Bar and Chain oil, 1 Bathroom in a Box (5 ea TP, 2 Gold Bond, 25 bath in a bag), 1 Box of Trash bags, 2 cases AA Batteries, 2 Rolls fiber tape, 1 Roll of Visqueen, 22 Sleeping Bags.</p> <p>Type 2 Spike Kit (> 1 night – max 3 night) (1 Crew 24 hr's), Type 1 kit from above plus: 20 Pair of work gloves, Basic Medical supplies (Line medic / EMT), Crew Red Bags, 22 Sleeping Pads.</p>							
<p>How to order: If you have 3 crews "spiking out" for 1 night then order 3 Type 1 Spike Kits, to be delivered to the DP / Sling site by XXXX hrs. **Add Firing Equipment as needed**</p>							

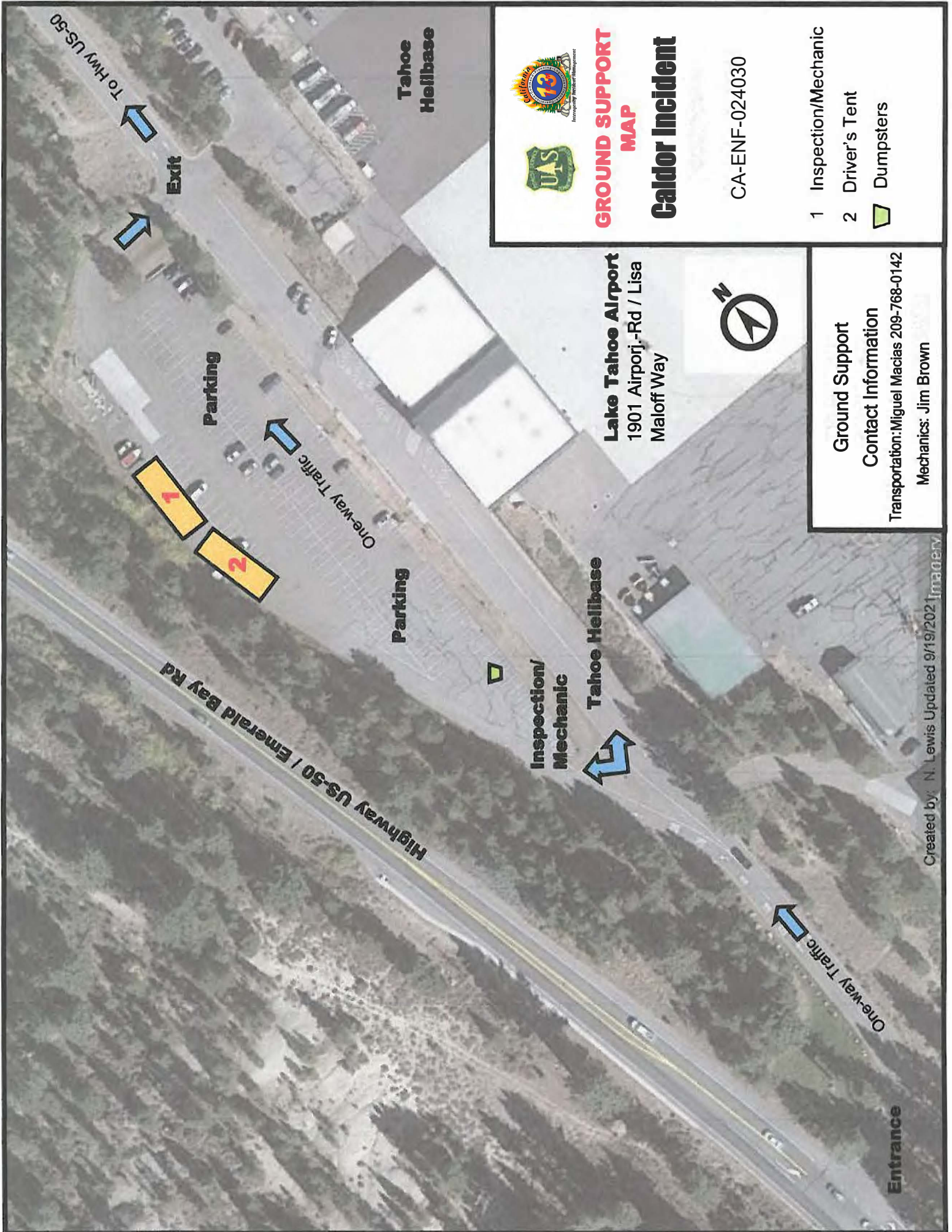


- 1 Check-in/ Demob
 - 2 Equipment Time
 - 3 Briefing Area
 - 4 Radio Tech
 - 5 Shower
 - 6 Laundry
 - 7 Kitchen
 - 8 Supply
 - 9 Lunches/ Water/ Ice
 - 10 Chainsaw Vendor
 - 11 Covid Testing
- + Medical Unit
▽ Dumpsters

Heavenly Basecamp Map

Caldor Incident
East Zone
 CA-ENF-024030
 3860 Saddle Rd, SLT

T. Camacho Updated 10/05/2021



**GROUND SUPPORT
MAP**
Caldor Incident

CA-ENF-024030

- 1 Inspection/Mechanic
- 2 Driver's Tent
- ▭ Dumpsters

Lake Tahoe Airport
1901 Airporj.-Rd / Lisa
Maloff Way



Ground Support
Contact Information
Transportation: Miguel Macias 209-768-0142
Mechanics: Jim Brown

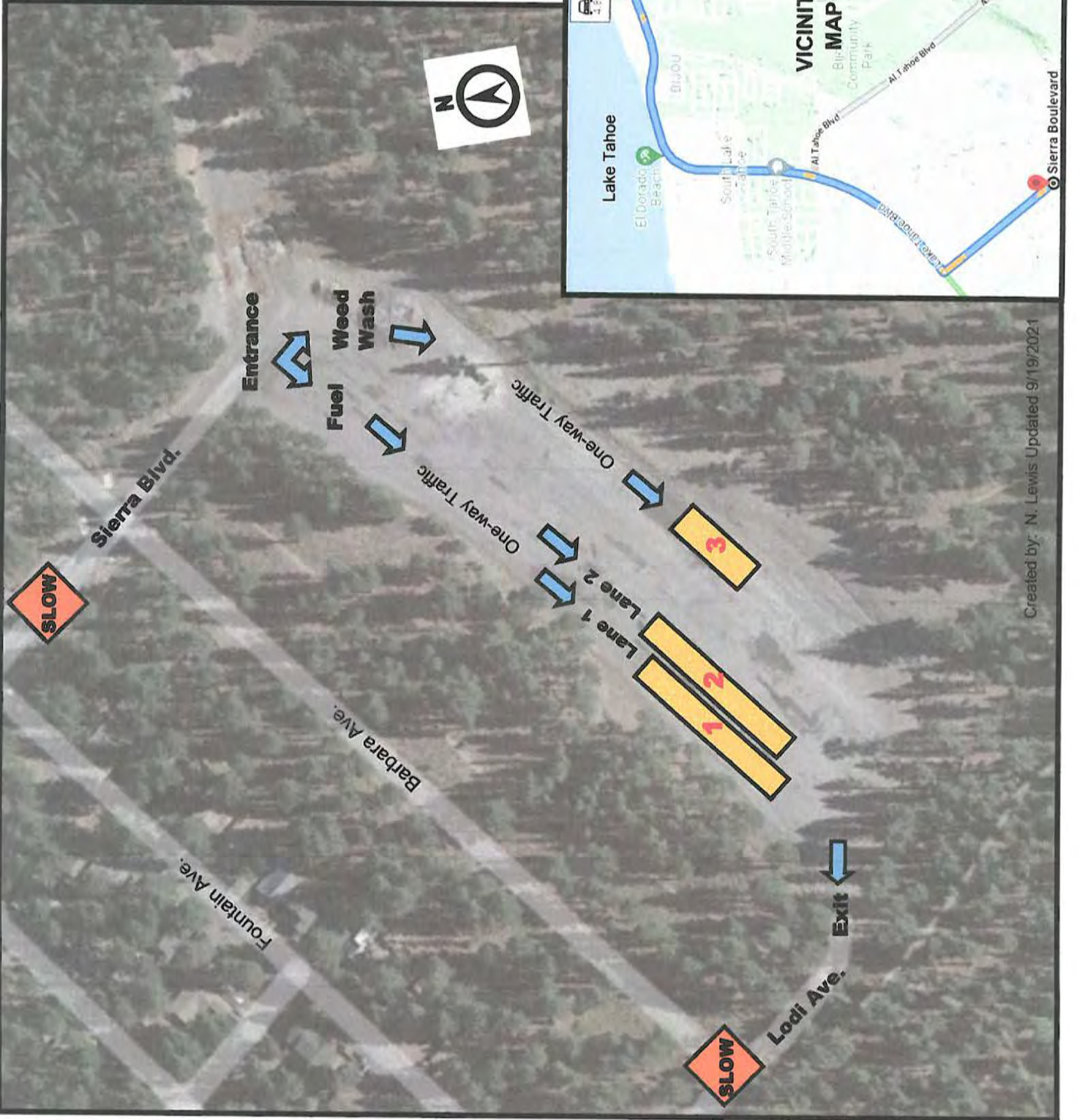
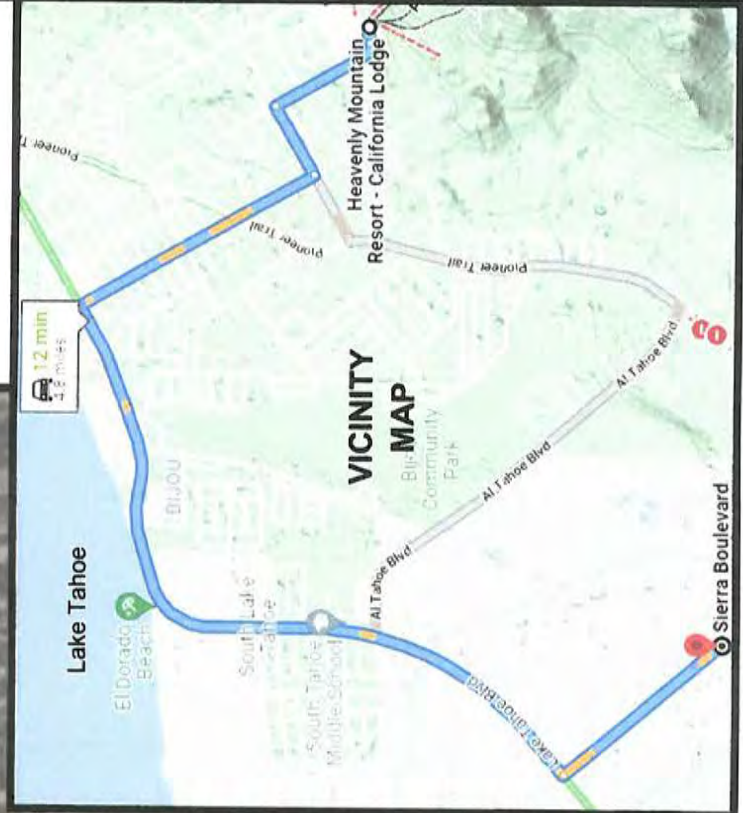


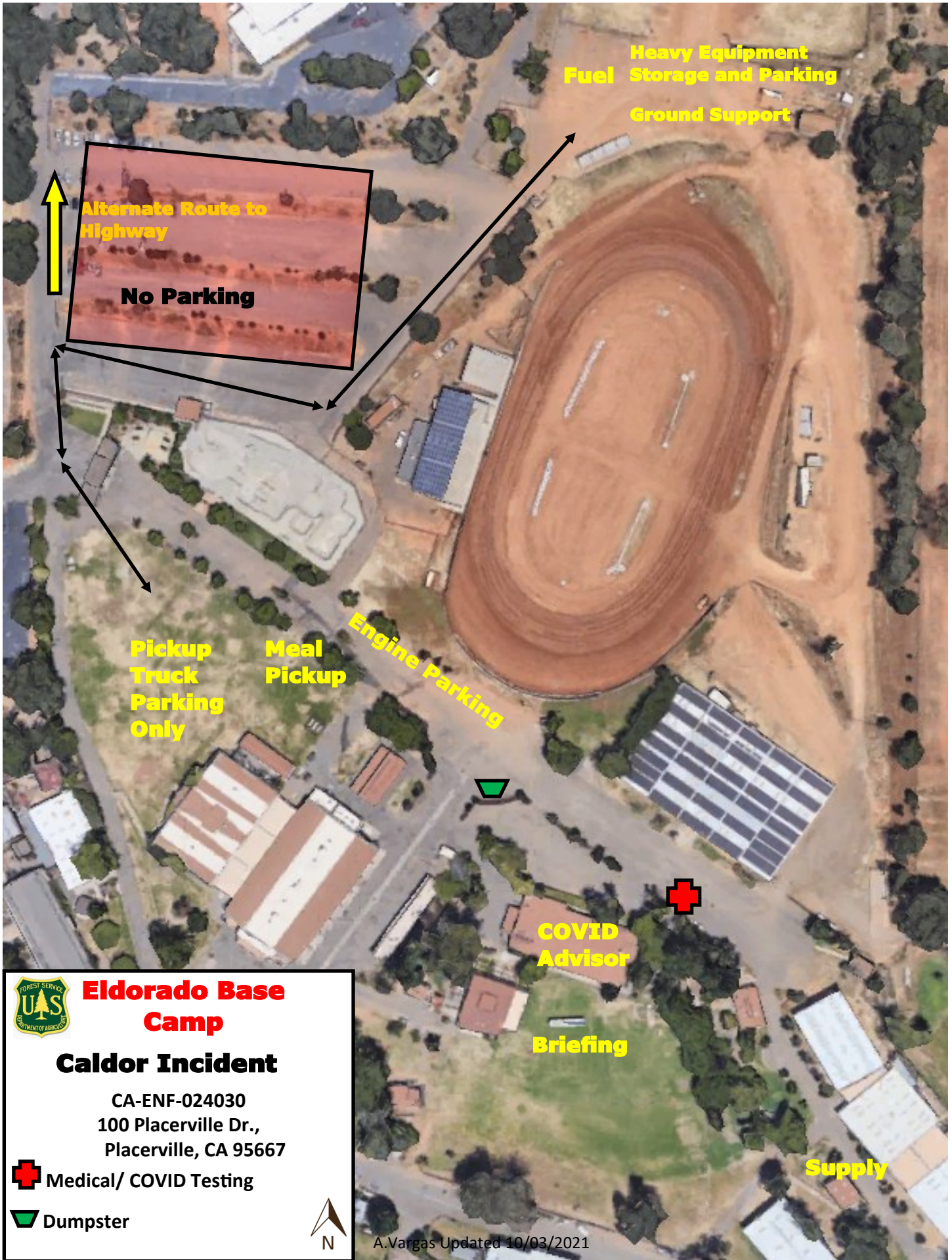
WEED WASH AND REFUEL MAP

Caldor Incident East Zone

CA-ENF-024030

- 1 Fuel Tender Lane 1
- 2 Fuel Tender Lane 2
- 3 Weed Wash





Alternate Route to Highway

No Parking

Heavy Equipment
Fuel Storage and Parking
Ground Support

Pickup
Truck
Parking
Only

Meal
Pickup

Engine Parking

COVID
Advisor

Briefing


Supply



Eldorado Base Camp

Caldor Incident

CA-ENF-024030
100 Placerville Dr.,
Placerville, CA 95667

 Medical/ COVID Testing

 Dumpster



DEMOB LIST

1. Incident Name:		2. Operational Period: Date From:	10/11/2021	Date To:	10/12/2021
CALDOR		Time From:	0700	Time To:	0700



DEMOB LIST



RESOURCE	NAME	TIME
----------	------	------

C-50061	HC2 BLUE MTN.	7:00
E-20015	WTS1 ASAP	7:00
O-50691	L. OVERTON	7:15
E-50275	ENG6 J3	7:15
C-50102	HC1 TALLAC	7:30
E-50277	ENG6 METHOW	7:30
O-50301	M. MACIAS	7:45
C-108	HC2 FIRESTORM	8:00
E-50281	ENG6 METALWORKS	8:00
O-50614	K. PRADO	8:15
E-50285	ENG4 PACIFIC OASIS	8:15
O-50617	J. KAISER	8:30
E-50289	WTS3 BUSCHER	8:30
O-20842	N. ALEGRIA	8:45

DEMOB QUESTIONS
(530) 584-9415



*Interagency Incident
Management*

