

Monday

INCIDENT ACTION PLAN

CALDOR INCIDENT

CA-ENF-024030
P5N8GM21



Maps, IAP, Virtual Briefing




OPERATIONAL PERIOD

9/27/2021 0700

to

9/28/2021 0700

ORGANIZATION ASSIGNMENT LIST (ICS 203)

1. Incident Name: CALDOR		2. Operational Period: Date From: 9/27/2021 Time From: 0700		Date To: 9/28/2021 Time To: 0700	
3. Incident Commander(s) and Command Staff:			7. Operation Section:		
IC	Mike Nobles, James Aragon(T)		Operations	Jim Snow, Mike Page(T)	
Deputy IC			Deputy Ops	Al Ward, Chris St Pierre(T)	
Safety Officer	Paul Tompkins, Mike Seymour(T), Trenton Prins(T)		Night Operations	Mike Koontz, Luis Gomez(T)	
Information Officer	Stephanie Bishop, Jay Nichols, DeLyn Sieliet(T)				
Liaison Officer	Don Smith(T), Alan Taylor(T)		Branch	I	Robert Szczepanek
			Division/Group	G / T / W	Kevin Reese
Agency/Organization	Name	Division/Group	Suppression Repair	Brad Stewart	
El Dorado NF - AA	Jeff Marsolais	Division/Group			
El Dorado NF - AA Rep.	Scot Rogers, Jon Regelbrugge	Division/Group			
Lake Tahoe BMU - AA	Gwen Sanchez	Division/Group			
Humboldt Toiyabe NF - AA	Jon Stansfield	Branch	III	John Owings	
CalFIRE Arep	Mike Blankenheim	Division/Group	I / M	Jason Flores, Aaron Roggenkamp(T)	
CalOES	Kit Bailey	Division/Group	O / P	Rob Noxon	
El Dorado SO	Deputy Greg Almos	Division/Group	Q	Kristian Litz, Andy Wordin(T)	
Sierra Pacific Ind.	Tim Tate	Division/Group	R	Garth Crow	
PG&E	Mike Webb	Division/Group	Suppression Repair	Rob Bertolina	
Amador County SO	LT. Jason Navarre	Branch	Night	TBD	
CHP	LT. Rick Hatfield	Division/Group	Night	Jeff Corser(T)	
Cal Trans	Greg Duffy	Division/Group			
AT&T	Kevan Young	Division/Group			
BLM	Jerry Martinez	Division/Group			
El Dorado Irrigation	Dan Corcoran	Division/Group			
East Fork FPD	Larry Goss	Branch	Strategic Planning	Greg Overacker, JT Sohr	
COVID Advisor	Greg Flory, Ben Gray	Division/Group			
5. Planning Section:			Division/Group		
Chief	Steve Anderson, Greg White(T)		Division/Group		
Deputy	Ken Bates		Division/Group		
Resource Unit	Mike Yeun, Derek Acosta(T)		Division/Group		
Situation Unit	Matt Snyder, Ray Rook(T), John Hamer(V)		Branch		
Documentation Unit	Nancy Nordensten(T)(V-RIST)		Division/Group		
Demobilization Unit	Chris Adams		Division/Group		
GISS	Rene Gonzalez		Division/Group		
FBAN	Rob Scott		Division/Group		
IMET	Patrick Gilchrist, Shawn Palmquist(T)		Division/Group		
Human Resources	Adrian Escobedo(V)		Air Operations Branch	Director:	JoAnn Overacker
Training Specialist	Derek Parker, Morgan Madruga(T)(V)		Air Support Group Supervisor	Rex Sundstrom(T)	
Lead READ	Emma Williams, Jennifer House		Air Tactical Group Supervisor	Todd White	
6. Logistics Section			Helibase Manager	Cammie Roy	
Chief	Scott Ashbach, Dave Alicea				
Supply Unit	Ruben Lopez(T)		8. Finance/Administration Section:		
Facilities Unit	Art Curley, Wendell Simmons(T)		Chief	Lisa Wilson(V), Dave Dukart(V)	
Ground Support Unit	Rickey Tootle, Chris Syler		Time Unit	Rebecca Lang(T)	
Communications Unit	Mike Greene		Cost Unit	Eleanor Molina(T)	
Medical Unit	Brandon Bennewate, Nic Stepanian		Comp/Claims Unit	Michael Jow, Tracy Nicholson (V)	
ITSS	Brett Davidson		PTRC	Cara Scott, Katrina Bryant(V)	
FOOD	Mikeal Gates		EQTR	Tiffany Ward, Sara Coleman(V), Tracy Silva(V)	
Prepared By: Name:	Greg White	Position/Title:	PSC2 (T)	Signature:	
ICS 203		Date/Time:	9/26/2021 2300 hours		



INCIDENT WEATHER FORECAST



FORECAST NO: 40
 PREDICTION FOR: 24 Hour Shift
 SHIFT DATE: 09/27/21
 FORECAST ISSUED: 09/26/21 1900

NAME OF FIRE: Caldor
 UNIT: USFS Eldorado NF
 SIGNED: Patrick Gilchrist/Shawn Palmquist (T)
 Incident Meteorologist

...Red Flag Warning in Effect through 0500 PDT Tuesday...

WEATHER DISCUSSION:

Southwest winds will continue to increase over the fire today as an upper trough moves onshore, breaking down the upper ridge. While temperatures will be a little cooler and RH a little higher, strong southwest winds are expected, leading to critical fire weather conditions. The strong southwest winds will continue tonight. A cold front will move through the fire area between 0400-0700 PDT Tuesday, bringing the possibility of a few rain showers along with cooler conditions. Expect winds to decrease quickly behind the front for Tuesday.

.TODAY...

Sky/weather.....Partly cloudy. Increasing clouds in the afternoon.
 Max temperature.....59 to 69 above 5000 feet and 69 to 76 below 5000 feet.
 Min humidity.....20 to 30%.
 Wind (20 ft).....
 Slope/Valley.....Southwest 15-25 mph. Gusts to 30 mph.
 Ridgetop.....Southwest 25-30 mph. Gusts to 45 mph.
 Mixing height... increasing to 10000 ft MSL mid-afternoon.

.TONIGHT...

Sky/weather.....Mostly cloudy. Chance of showers after midnight (30%). Cold front passage between 0400-0700 PDT.
 Min temperature.....36 to 40 midslope to ridgetop. 40 to 47 valleys. (Middle 30s valleys east of the crest.)
 Max humidity.....70 to 90%.
 Wind (20 ft).....
 Slope/valley.....Southwest 20-30 mph. Gusts to 40 mph.
 Ridgetop.....Southwest 25-35 mph. Gusts 40-50 mph; up to 60 mph over the highest exposed peaks.

.TUESDAY...

Sky/weather.....Decreasing clouds. Chance of showers in the morning (30%).
 Max temperature.....48 to 58 above 5000 feet and 58 to 66 below 5000 feet.
 Min humidity.....30 to 40% midslope to ridgetop. 25 to 30% valleys.
 Wind (20 ft).....
 Slope/Valley.....West 10-20 mph in the morning decreasing to 8-15 mph in the afternoon.
 Ridgetop.....West 15-25 mph in the morning decreasing to 10-20 mph in the afternoon.
 Mixing height... increasing to 10000 ft MSL mid-afternoon.

Incident Weather Station Data – SCAN Code with Smart Phone
 Branch I

Branch III



FIRE BEHAVIOR FORECAST

FORECAST NUMBER: 11	TYPE OF FIRE: Vegetation
FIRE NAME: Caldor	OPERATIONAL PERIOD: Sept 27 th 24 Hour
DATE ISSUED: Sept 26 th	TIME ISSUED: 2000
UNIT: CA Eldorado National Forest/Lake Tahoe Basin Management Unit	SIGNED: Robert Scott 530-990-4048 Fire Behavior Analyst (FBAN)

WEATHER SUMMARY: See detailed Fire Weather Forecast in IAP **** RED FLAG WARNING ****

FUELS:

Needles and leaves from dry and underburned trees is creating a fresh fuel bed. Fire will move easily through these fuels, often undetected, until reaching heavy fuels. The Eldorado National Forest is currently classified as 'Extreme to Exceptional' drought by the US Drought Monitor, with Energy Release Components exceeding the 90th percentile, not far off all time high levels. Heavy dead and down fuels will likely burn completely, holding heat and actively consuming through all hours of the day. Fine dead fuel moisture is calculated at 3% or less.

EXPECTED FIRE BEHAVIOR: *Based on the Warmest, Driest, Windiest Conditions Forecasted*

<u>Maximum Spotting Distance</u> 0.6 mile	Fuel Type/Model	Maximum Rate of Spread (chains/hour)	Maximum Flame Length (feet)
<u>Probability of Ignition</u> 64 %	Timber understory (TU5-Overstocked and/or dense reprod)	Head 20-25 ch/hr Flank 3-5 ch/hr	Head 11-13 ft Flank 4-6 ft
	Timber litter (TL6-closed canopy, ground fuels)	Head 15-20 ch/hr Flank 2-4 ch/hr	Head 3-5 ft Flank 2-4 ft

General: Increase spread potential with front passage, increased winds, and fresh fuel bed. Relief from very dry conditions will also accompany frontal passage but not before containment lines are wind tested. Drainage and wind alignment will amplify rates of spread.

SPECIFIC

Branch 1 - Line locations along ridge top will see strong winds with unfavorable wind directions. Special care should be taken to verify continuous fuel beds have not been created across control lines with forecast stronger winds.

Branch 3 – Higher elevation locations will see the highest winds speeds of this incident. Fire transitioning to crowns will produce moderate to long range spotting.

Divisions India and Mike could see increased surface fire activity as exposed areas will experience increase wind impacts. Pockets of heat well interior could produce fire movement to green inlands as fire finds fresh fuels to move through. Repopulation in the Highway 50 corridor may bring an increase in service calls; potential for reburn remains in the green islands.

Divisions Quebec and Romeo These areas will experience the strongest winds with the passing front. Broken fuels and rocky areas have left stringers of unburned fuel. Fire moving across ridges will see some shelter on the east aspects but will continue to move with the wind.

Divisions Oscar and Papa are favorably aligned with forecast winds. Containment lines are experienced lower severity impacts and reburning and flare ups could threaten to containment lines. High winds will likely have heavies and root wads burning again, producing smoke visible to residents.

Night Operations: Winds will increase into the evening hours before increasing relative humidity and reduced winds provided relief from red flag conditions.

AIR OPERATIONS:

Winds speeds will approach maximum levels aviation operations.

SAFETY:

Introduction of fresh fuel bed from needle cast will allow fire to move across the landscape in previously burned areas. Fire can rapidly transition from surface fire to group touching and crowning.



Health & Safety Message

Incident: CALDOR Fire CA-ENF- 024030	Date/Op Period: Day/Night Shift 9/27 - 28/21
--	--

Hazards & Risks

Fuel Geysers: Cases of "Fuel Geysers" involving leakage of chainsaw fuel, vapor lock/ tank pressurization, and fuel spray have resulted in serious burns to firefighters. Firefighters should remember that fuel leakage, vapor lock/tank pressurization and potential fuel spray can occur at any time when using chainsaws. Fuel can become pressurized in any container that does not automatically vent and can spray out when pressure is released rapidly. For firefighters working near ignition sources, having fuel on your clothing or skin presents a significant hazard. Personal Protective Equipment, even flame resistant clothing does not provide protection when fuel-soaked PPE ignites.

Fire Camp Safety: We usually don't think of Fire Camp as a dangerous place but camp has a few hazards to look out for:

- Trip hazards such as stairs, tent stakes, cables and wires are abundant.
- Vehicle traffic in and around parking areas and driving through camp.
- Electrical shock from all the power cords and power strips plugged in our tents, kitchen area, hand wash stations and shower unit.
- Wildlife and insects.
- Walking and talking or texting on our cell phones.
- Sharp objects such as scissors, tacks, saws and nails.
- Adverse weather; to name just a few Fire Camp Watch Outs.
So, pay attention to your surroundings and avoid distractions!

Travel Home: You've survived the fire, now survive the drive home. If you are demobing, get plenty of rest time prior to your departure, especially those of you with long drives. Take rest stops as needed and don't sacrifice your safety in a rush to get back. Use seat belts and ARRIVE ALIVE!

**Paul Tompkins, Mike Seymour,
Trent Prins SOF2**

**L. Lookouts C. Communications E. Escape Routes S. Safety Zones
BE MINDFUL**

ASSIGNMENT LIST (ICS 204 WF)

CONTROLLED UNCLASSIFIED
INFORMATION/BASIC

1. Incident Name: <p style="text-align: center;">CALDOR</p>	2. Operational Period: Date From: 09/27/21 Date To: 09/28/21 Time From: 0700 Time To: 0700	3. Branch Division <p style="text-align: center;">I G / T / W</p>
--	---	---

4. Operations Personnel: Page 1 of 1

Operations Section Chief: Jim Snow, Mike Page(T) Branch Director: Robert Szczepanek Division/Group Supervisor: Kevin Reese	Night Ops: Mike Koontz, Luis Gomez(T) Deputy Ops Al Ward, Chris St Pierre(T) Air Attack: Todd White
---	--


5. Resources Assigned:	** Resources Below in Bold are 12 Hour **							
Resource Identifier	ALS	LWD	Leader	Personnel	Request #	Hours	Reporting Location	
HC2 BLUE MOUNTAIN		10/3	PEREZ	20	C-50061	0700-1900	El Dorado Fair	
*** HC2 PATRICK ENVIRON		10/6	DOMBI	20	C-50071	0700-1900	El Dorado Fair	
HC2 DIAMOND FIRE		10/6	ANDREWS-JORDAN	20	C-50074	0700-1900	El Dorado Fair	
HC2 NORTH PACIFIC		10/8	CISNEROS	20	C-50084	0700-1900	El Dorado Fair	
ENG3 NV-B5331		9/30	ARROYO	4	E-50207	0700-1900	El Dorado Fair	
ENG4 HEART VENTURES 1		9/30	WETZEL	3	E-50193	0700-1900	El Dorado Fair	
ENG6 J3 CONTRACTING		10/3	EASLEY	3	E-50275	0700-1900	El Dorado Fair	
ENG6 WHITEGRASS FIRE		9/30	WHITEGRASS	3	E-50266	0700-1900	El Dorado Fair	
ENG6 GOODING		9/30	MCKINNEY	2	E-50199	0700-1900	El Dorado Fair	
ENG6 RED DOG		9/30	ENGLAND	3	E-50205	0700-1900	El Dorado Fair	
ENG6 COOPER CONTRACTING		10/3	MEDRANO	3	E-50292	0700-1900	El Dorado Fair	
*** WTS2 MOAPA VALLEY 2		9/28	HASKELL	1	E-50372	0700-1900	El Dorado Fair	
TFLD GHOLSON		10/6	GHOLSON	1	O-50578	0700-1900	El Dorado Fair	
SOFR(T) GREMEL		10/6	GREMEL	1	O-50532	0700-1900	El Dorado Fair	
EMPF DIEM	X	9/30	DIEM	1	O-50312	0700-1900	El Dorado Fair	
EMTF MAKEMSON		9/30	MAKEMSON	1	O-50317	0700-1900	El Dorado Fair	
MEDIC 60	X	10/1	NAVARRO/GOMEZ	2	E-20720	0700-1900	El Dorado Fair	

6. Work Assignments:
 TASK: Secure existing line and provide for tactical patrol within the Hwy 50 corridor. Coordinate with REAFs and mop up to the extent necessary on the fires edge and within the perimeter where infrastructure and values at risk are present
 PURPOSE: Minimize any fire progression and ensure the safety of those working on the west side of Mormon Emigrant Trail
 END STATE: Fires edge in the division is controlled and escape is improbable

7. Special Instructions:
 Backhaul trash, excess supplies and provide a location for accountable property
 Identify and coordinate the removal of hazard trees
 Resources denoted with * is identified as I/A resources within the TFR. **Resources denoted with *** are Lend Lease to the Rubicon Fire**
 Resources need to report to El Dorado County Fairgrounds (100 Placerville Dr, Placerville, CA 95667) for briefing


8. Communications

Name	Ch	Function	Rx Freq	Rx Tone	Tx Freq	Tx Tone	Notes
COMMAND SEE ICS 205	1	COMMAND					
NIFC T1	8	TACTICAL	168.0500N		168.0500N		
A/G CMD	12	A/G CMD	167.9500N		167.9500N		
CALCORD	15	COORDINATION	156.0750N	156.7	156.0750N	156.7	
GUARD 16	16	EMERGENCY	168.6250N		168.6250N	110.9	

9. Prepared by: Name: Mike Yeun, Derek Acosta(T) RESL
 Signature: 
ICS 204 Date/Time: 9/26/2021 2200 Personnel Count: 108

ASSIGNMENT LIST (ICS 204 WF)

CONTROLLED UNCLASSIFIED
INFORMATION/BASIC

1. Incident Name: <p style="text-align: center; font-weight: bold;">CALDOR</p>		2. Operational Period: Date From: 09/27/21 Date To: 09/28/21 Time From: 0700 Time To: 0700				3. Branch Division <p style="text-align: center; font-weight: bold;">I Suppression Repair</p>	
4. Operations Personnel: Operations Section Chief: Jim Snow, Mike Page(T) Branch Director: Robert Szczepanek Division/Group Supervisor: Brad Stewart		Night Ops: Mike Koontz, Luis Gomez(T) Deputy Ops Al Ward, Chris St Pierre(T) Air Attack: Todd White					
5. Resources Assigned:		** Resources Below in Bold are 12 Hour **					
Resource Identifier	ALS	LWD	Leader	Personnel	Request #	Hours	Reporting Location
TFLD LOWELL		9/29	LOWELL	1	O-568	0700-1900	El Dorado Fair
HEQB SMITH		9/27	SMITH	1	O-562	0700-1900	El Dorado Fair
HEQB GENTIS		10/8	GENTIS	1	O-50583	0700-1900	El Dorado Fair
HEQB(T) JOHNSON		10/8	JOHNSON	1	O-50501	0700-1900	El Dorado Fair
GROUP #1 MET							
PROC PATHFINDER		9/29	FULTON	1	E-730	0700-1900	El Dorado Fair
SKD SIERRA FOREST 2		9/30	J. WASS	1	E-705	0700-1900	El Dorado Fair
SKD SIERRA FOREST 3		9/30	DUARTE	1	E-706	0700-1900	El Dorado Fair
LOAD SIERRA NEVADA 2		9/29	WASS	1	E-50173	0700-1900	El Dorado Fair
LOAD ROMINE TIMBER 1		10/10		1	E-724	0700-1900	El Dorado Fair
FEL1 SIERRA NEVADA		9/28	D. WASS	1	E-699	0700-1900	El Dorado Fair
FEL1 AXSUS 1		10/6	BASNAW	2	E-701	0700-1900	El Dorado Fair
FMOD A&F ENTERPRISES 1		9/27	PAFFORD	2	O-234	0700-1900	El Dorado Fair
GROUP #2 MET							
SKD SIERRA FOREST 1		9/30	MARTIN	1	E-704	0700-1900	El Dorado Fair
SKD SIERRA FOREST 5		10/1	MARVIN	1	E-708	0700-1900	El Dorado Fair
FEL1 AXSUS 2		10/6	AKRE	2	E-716	0700-1900	El Dorado Fair
LOAD SIERRA NEVADA 1		9/30	LANGLEY	1	E-50172	0700-1900	El Dorado Fair
LOAD ROMINE TIMBER 2		10/12	ROMINE	1	E-725	0700-1900	El Dorado Fair
*** FAL1 A&F ENTERPRISES		10/4	BOKISH	1	O-50088	0700-1900	El Dorado Fair
*** FAL1 MOEN TIMBER FALLING		10/4	MOEN	1	O-50089	0700-1900	El Dorado Fair
6. Work Assignments: TASK: Perform priority suppression repair work within Branch 1. Repair contingency line along Peavine Ridge and Granite Springs Rd while continuing Hazard Tree Removal along Mormon Emigrant Trail and Sierra at Tahoe PURPOSE: Minimize any near-term environmental resource impacts as a result of fire suppression efforts END STATE: Watershed and areas adjacent to values at risk are protected using the approved standard							
7. Special Instructions: Backhaul trash, excess supplies and provide a location for accountable property Identify and coordinate the removal of hazard trees Resources denoted with * is identified as I/A resources within the TFR. Resources denoted with *** are Lend Lease to the Rubicon Fire Resources need to report to El Dorado County Fairgrounds (100 Placerville Dr, Placerville, CA 95667) for briefing							
8. Communications							
Name	Ch	Function	Rx Freq	Rx Tone	Tx Freq	Tx Tone	Notes
COMMAND SEE ICS 205	1	COMMAND					
NIFC T6	9	TACTICAL	166.7750N		166.7750N		
A/G CMD	12	A/G CMD	167.9500N		167.9500N		
CALCORD	15	COORDINATION	156.0750N	156.7	156.0750N	156.7	
GUARD 16	16	EMERGENCY	168.6250N		168.6250N	110.9	
9. Prepared by: Name:		Mike Yeun, Derek Acosta(T)		RESL		Signature: 	
ICS 204	Date/Time: 9/26/2021 2200			Personnel Count: 14			

ASSIGNMENT LIST (ICS 204 WF)

CONTROLLED UNCLASSIFIED
INFORMATION/BASIC

1. Incident Name: <p style="text-align: center;">CALDOR</p>	2. Operational Period: Date From: 09/27/21 Date To: 09/28/21 Time From: 0700 Time To: 0700	3. Branch Division <p style="text-align: center;">1 Suppression Repair</p>
--	---	---

Page 2 of 5

4. Operations Personnel: Operations Section Chief: Jim Snow, Mike Page(T) Branch Director: Robert Szczepanek Division/Group Supervisor: Brad Stewart	Night Ops: Mike Koontz, Luis Gomez(T) Deputy Ops: Al Ward, Chris St Pierre(T) Air Attack: Todd White
---	---

5. Resources Assigned:	** Resources Below in Bold are 12 Hour **							
Resource Identifier	ALS	LWD	Leader	Personnel	Request #	Hours	Reporting Location	
GROUP #3 GRINDING								
HEQB OSSOWSKI		10/7	OSSOWSKI	1	O-50498	0700-1900	El Dorado Fair	
GRND ARBORWORKS		9/30	MEALIN	1	E-731	0700-1900	El Dorado Fair	
LOAD BAMFORD 1		9/29	MONTGOMERY	1	E-720	0700-1900	El Dorado Fair	
LOAD SIERRA NEVADA 3		9/29	STANBRIDGE	1	E-50159	0700-1900	El Dorado Fair	
LOAD BAMFORD 3		9/29	MONTGOMERY	1	E-723	0700-1900	El Dorado Fair	
TFLD(T) HAYDON		10/6	HAYDON	1	O-50435	0700-1900	El Dorado Fair	
GROUP #4 SKI RESORT								
FEL2 J&R LOGGING		9/30	JIMENEZ	1	E-50151	0700-1900	El Dorado Fair	
PROC J&R LOGGING		9/30	JIMENEZ	1	E-50150	0700-1900	El Dorado Fair	
SKD SIERRA FOREST 4		9/30	CAMPBELL	1	E-707	0700-1900	El Dorado Fair	
SKD J&R LOGGING		10/1	JIMENEZ	1	E-712	0700-1900	El Dorado Fair	
SKD T1 CECIL LOGGING		9/29	HUNTER	1	E-50153	0700-1900	El Dorado Fair	
LOAD BAMFORD 2		9/29	MONTGOMERY	1	E-721	0700-1900	El Dorado Fair	

6. Work Assignments:
 TASK: Perform priority suppression repair work within Branch 1. Repair contingency line along Peavine Ridge and Granite Springs Rd while continuing Hazard Tree Removal along Mormon Emigrant Trail and Sierra at Tahoe
 PURPOSE: Minimize any near-term environmental resource impacts as a result of fire suppression efforts
 END STATE: Watershed and areas adjacent to values at risk are protected using the approved standard

7. Special Instructions:
 Backhaul trash, excess supplies and provide a location for accountable property
 Identify and coordinate the removal of hazard trees
 Resources denoted with * is identified as I/A resources within the TFR. **Resources denoted with *** are Lend Lease to the Rubicon Fire**
 Resources need to report to El Dorado County Fairgrounds (100 Placerville Dr, Placerville, CA 95667) for briefing

8. Communications							
Name	Ch	Function	Rx Freq	Rx Tone	Tx Freq	Tx Tone	Notes
COMMAND SEE ICS 205	1	COMMAND					
NIFC T6	9	TACTICAL	166.7750N		166.7750N		
A/G CMD	12	A/G CMD	167.9500N		167.9500N		
CALCORD	15	COORDINATION	156.0750N	156.7	156.0750N	156.7	
GUARD 16	16	EMERGENCY	168.6250N		168.6250N	110.9	

9. Prepared by: Name: Mike Yeun, Derek Acosta(T) RESL
 Signature:

ICS 204 Date/Time: 9/26/2021 2200 Personnel Count: 12

ASSIGNMENT LIST (ICS 204 WF)

CONTROLLED UNCLASSIFIED
INFORMATION//BASIC

1. Incident Name:	2. Operational Period:	3. Branch	Division
CALDOR	Date From: 09/27/21 Date To: 09/28/21 Time From: 0700 Time To: 0700	1	Suppression Repair

4. Operations Personnel:		Page 3 of 5
Operations Section Chief: Jim Snow, Mike Page(T) Branch Director: Robert Szczepanek Division/Group Supervisor: Brad Stewart	Night Ops: Mike Koontz, Luis Gomez(T) Deputy Ops Al Ward, Chris St Pierre(T) Air Attack: Todd White	

5. Resources Assigned:	** Resources Below in Bold are 12 Hour **						
Resource Identifier	ALS	LWD	Leader	Personnel	Request #	Hours	Reporting Location
GROUP #5 WRIGHTS LAKE							
HEQB(T) GOTTS		9/29	GOTTS	1	O-541	0700-1900	El Dorado Fair
HC2 FRANCO 73		10/6	TOWNSEND	20	C-50073	0700-1900	El Dorado Fair
ENG3 ROCKY MTN		9/30	STREHLE	3	E-50206	0700-1900	El Dorado Fair
ENG6 SCHOLL FIRE & FUEL		10/3	MAHARREY	3	E-50291	0700-1900	El Dorado Fair
WTS2 PARTRIDGE		10/10	CARTER	1	E-50371	0700-1900	El Dorado Fair
* DOZ2 ENF 3		10/9	STARK	3	E-200	0700-1900	El Dorado Fair
DOZ2 HERTZIG 1		10/11	HERTZIG	1	E-101	0700-1900	El Dorado Fair
DOZ3 TOM'S EARTHMOVING		9/30	FUNES	2	E-50239	0700-1900	El Dorado Fair
EXCA VENTANA RANCH		10/9	LOVERTON	1	E-689	0700-1900	El Dorado Fair
EXCA EMERSON		10/8	SHERRILL	1	E-50154	0700-1900	El Dorado Fair
EXCA INGRAM		10/8	WHEELER	1	E-50155	0700-1900	El Dorado Fair
EXCA BRUCE YOUNG		10/1	YOUNG	1	E-241	0700-1900	El Dorado Fair
MAST PVT (E-58)		10/7	MARLIN	1	E-58	0700-1900	El Dorado Fair
SKDG DC FIRE		10/8	GANN	2	E-247	0700-1900	El Dorado Fair
REAF FOULK		9/29	FOULK	1	O-181	0700-1900	El Dorado Fair

6. Work Assignments:
 TASK: Perform priority suppression repair work within Branch 1. Repair contingency line along Peavine Ridge and Granite Springs Rd while continuing Hazard Tree Removal along Mormon Emigrant Trail and Sierra at Tahoe
 PURPOSE: Minimize any near-term environmental resource impacts as a result of fire suppression efforts
 END STATE: Watershed and areas adjacent to values at risk are protected using the approved standard

7. Special Instructions:
 Backhaul trash, excess supplies and provide a location for accountable property
 Identify and coordinate the removal of hazard trees
 Resources denoted with * is identified as I/A resources within the TFR. **Resources denoted with *** are Lend Lease to the Rubicon Fire**
 Resources need to report to El Dorado County Fairgrounds (100 Placerville Dr, Placerville, CA 95667) for briefing

8. Communications

Name	Ch	Function	Rx Freq	Rx Tone	Tx Freq	Tx Tone	Notes
COMMAND SEE ICS 205	1	COMMAND					
NIFC T6	9	TACTICAL	166.7750N		166.7750N		
A/G CMD	12	A/G CMD	167.9500N		167.9500N		
CALCORD	15	COORDINATION	156.0750N	156.7	156.0750N	156.7	
GUARD 16	16	EMERGENCY	168.6250N		168.6250N	110.9	

9. Prepared by: Name: Mike Yeun, Derek Acosta(T) RESL
 Signature:
ICS 204 Date/Time: 9/26/2021 2200 Personnel Count: 7

ASSIGNMENT LIST (ICS 204 WF)

CONTROLLED UNCLASSIFIED
INFORMATION/BASIC

1. Incident Name: <p style="text-align: center; font-weight: bold;">CALDOR</p>	2. Operational Period: Date From: 09/27/21 Date To: 09/28/21 Time From: 0700 Time To: 0700	3. Branch Division <p style="text-align: center; font-weight: bold;">1 Suppression Repair</p>
--	---	--

4. Operations Personnel:		Page 4 of 5
Operations Section Chief: Jim Snow, Mike Page(T) Branch Director: Robert Szczepanek Division/Group Supervisor: Brad Stewart	Night Ops: Mike Koontz, Luis Gomez(T) Deputy Ops: Al Ward, Chris St Pierre(T) Air Attack: Todd White	

5. Resources Assigned:		** Resources Below In Bold are 12 Hour **					
Resource Identifier	ALS	LWD	Leader	Personnel	Request #	Hours	Reporting Location
GROUP #8 KIRKWOOD							
TFLD HUMBACH			HUMBACH	1	O-566	0700-1900	El Dorado Fair
TFLD(T) BERKE			BERKE	1	O-576	0700-1900	El Dorado Fair
CHIP WOOD CHUCK		10/9	TINGLER	1	E-50174	0700-1900	El Dorado Fair
EXCA WEST WOOD		10/9	WEST	2	E-232	0700-1900	El Dorado Fair
EXCA COTTONWOOD		10/15	HARTLEY	2	E-687	0700-1900	El Dorado Fair
EXCA CLAYTON		9/30	TITTLE	2	E-50228	0700-1900	El Dorado Fair
CTL FOREST MANAGEMENT							
SKD2 CTL FOREST MGMT		9/29	KREGOSKI	6	E-50188	0700-1900	El Dorado Fair
LOAD CTL FOREST MGMT 1		9/29	KREGOSKI	6	E-50189	0700-1900	El Dorado Fair
LOAD CTL FOREST MGMT 2		9/29	KREGOSKI	6	E-50187	0700-1900	El Dorado Fair
FAL1 CTL BLAIR		9/29	BLAIR	1	O-50346	0700-1900	El Dorado Fair
FAL1 CTL ELDERD		9/29	ELDERD	1	O-50347	0700-1900	El Dorado Fair
FAL1 CTL WHITE		9/29	WHITE	1	O-50348	0700-1900	El Dorado Fair
FAL1 CTL GREEN		9/29	GREEN	1	O-50349	0700-1900	El Dorado Fair
FAL1 CTL HOLLAND		9/29	HOLLAND	1	O-50350	0700-1900	El Dorado Fair

6. Work Assignments:
 TASK: Perform priority suppression repair work within Branch 1. Repair contingency line along Peavine Ridge and Granite Springs Rd while continuing Hazard Tree Removal along Mormon Emigrant Trail and Sierra at Tahoe
 PURPOSE: Minimize any near-term environmental resource impacts as a result of fire suppression efforts
 END STATE: Watershed and areas adjacent to values at risk are protected using the approved standard

7. Special Instructions:
 Backhaul trash, excess supplies and provide a location for accountable property
 Identify and coordinate the removal of hazard trees
 Resources denoted with * is identified as I/A resources within the TFR. **Resources denoted with *** are Lend Lease to the Rubicon Fire**
 Resources need to report to El Dorado County Fairgrounds (100 Placerville Dr, Placerville, CA 95667) for briefing

8. Communications

Name	Ch	Function	Rx Freq	Rx Tone	Tx Freq	Tx Tone	Notes
COMMAND SEE ICS 205	1	COMMAND					
NIFC T6	9	TACTICAL	166.7750N		166.7750N		
A/G CMD	12	A/G CMD	167.9500N		167.9500N		
CALCORD	15	COORDINATION	156.0750N	156.7	156.0750N	156.7	
GUARD 16	16	EMERGENCY	168.6250N		168.6250N	110.9	

9. Prepared by: Name:	Mike Yeun, Derek Acosta(T)	RESL	Signature:
ICS 204	Date/Time: 9/26/2021 2200	Personnel Count: 31	

ASSIGNMENT LIST (ICS 204 WF)

CONTROLLED UNCLASSIFIED
INFORMATION/BASIC

1. Incident Name: <p style="text-align: center;">CALDOR</p>	2. Operational Period: Date From: 09/27/21 Date To: 09/28/21 Time From: 0700 Time To: 0700	3. Branch Division <p style="text-align: center;">1 Suppression Repair</p>
--	---	---

Page 5 of 5

4. Operations Personnel: Operations Section Chief: Jim Snow, Mike Page(T) Branch Director: Robert Szczepanek Division/Group Supervisor: Brad Stewart	Night Ops: Mike Koontz, Luis Gomez(T) Deputy Ops: Al Ward, Chris St Pierre(T) Air Attack: Todd White
---	---

5. Resources Assigned:	** Resources Below in Bold are 12 Hour **							
Resource Identifier	ALS	LWD	Leader	Personnel	Request #	Hours	Reporting Location	
*** WTS1 ASAP		10/2	DIXON	2	E-20015	0700-1900	El Dorado Fair	
EXCA2 LONESTAR ENT		9/30	MILLER	2	E-50231	0700-1900	El Dorado Fair	
CHIP YREKA OUTLANDS		10/5	JONES	3	E-50304	0700-1900	El Dorado Fair	
SKD T1 FORKNER		10/9	DIAL	2	E-50152	0700-1900	El Dorado Fair	
FEL1 AXSUS 3		10/9	FERGUSON	2	E-719	0700-1900	El Dorado Fair	
LOAD SIERRA NEVADA 4		9/27	DIBBLE	1	E-50158	0700-1900	El Dorado Fair	
LOAD HEAVYHAUL		9/29	LESLIE	2	E-50226	0700-1900	El Dorado Fair	
LOG TRK VOLCANO CREEK			ELLIOT	1	E-50156	0700-1900	El Dorado Fair	
LOG TRK ARBORWORKS		9/27	YOUNGREN	1	E-50157	0700-1900	El Dorado Fair	
LOG RIDGE LOGGING		9/30	SLACK	1	E-737	0700-1900	El Dorado Fair	
LOG HEAVYHAUL		9/30	LESLIE	1	E-738	0700-1900	El Dorado Fair	
FMOD REDWOOD EMPIRE		10/2	GONZALEZ	2	O-50342	0700-1900	El Dorado Fair	
CARE AMBULANCE 527		10/3	GLINE/HATZ	2	E-20628	0700-1900	El Dorado Fair	
REAF SLOAN			SLOAN	1	O-535	0700-1900	El Dorado Fair	
REAF(T) HENDERSON			HENDERSON	1	O-575	0700-1900	El Dorado Fair	
ARCH COOPER			COOPER	1	O-180	0700-1900	El Dorado Fair	
ARCH(T) MARTI		9/28	MARTI	1	O-572	0700-1900	El Dorado Fair	

6. Work Assignments:
 TASK: Perform priority suppression repair work within Branch 1. Repair contingency line along Peavine Ridge and Granite Springs Rd while continuing Hazard Tree Removal along Mormon Emigrant Trail and Sierra at Tahoe
 PURPOSE: Minimize any near-term environmental resource impacts as a result of fire suppression efforts
 END STATE: Watershed and areas adjacent to values at risk are protected using the approved standard

7. Special Instructions:
 Backhaul trash, excess supplies and provide a location for accountable property
 Identify and coordinate the removal of hazard trees
 Resources denoted with * is identified as I/A resources within the TFR. **Resources denoted with *** are Lend Lease to the Rubicon Fire**
 Resources need to report to El Dorado County Fairgrounds (100 Placerville Dr, Placerville, CA 95667) for briefing

8. Communications

Name	Ch	Function	Rx Freq	Rx Tone	Tx Freq	Tx Tone	Notes
COMMAND SEE ICS 205	1	COMMAND					
NIFC T6	9	TACTICAL	166.7750N		166.7750N		
A/G CMD	12	A/G CMD	167.9500N		167.9500N		
CALCORD	15	COORDINATION	156.0750N	156.7	156.0750N	156.7	
GUARD 16	16	EMERGENCY	168.6250N		168.6250N	110.9	

9. Prepared by: Name: Mike Yeun, Derek Acosta(T) RESL
 Signature:

ICS 204 Date/Time: 9/26/2021 2200 Personnel Count: 24

ASSIGNMENT LIST (ICS 204 WF)

CONTROLLED UNCLASSIFIED
INFORMATION/BASIC

1. Incident Name: CALDOR	2. Operational Period: Date From: 09/27/21 Date To: 09/28/21 Time From: 0700 Time To: 0700	3. Branch Division III I / M
---	---	---

Page 1 of 2


4. Operations Personnel:	
Operations Section Chief: Jim Snow, Mike Page(T) Branch Director: John Owings Division/Group Supervisor: Jason Flores, Aaron Roggenkamp(T)	Night Ops: Mike Koontz, Luis Gomez(T) Deputy Ops: Al Ward, Chris St Pierre(T) Air Attack: Todd White

5. Resources Assigned:		** Resources Below in Bold are 12 Hour **					
Resource Identifier	ALS	LWD	Leader	Personnel	Request #	Hours	Reporting Location
*** HC2IA YUKON		10/7	HABERMANN	21	O-50077	0700-1900	HEAVENLY ICP
HC2 SZ FORESTRY		10/5	FULLERTON	19	C-50068	0700-1900	HEAVENLY ICP
ENG3 HART 291		10/6	GATES	3	E-291	0700-1900	HEAVENLY ICP
ENG3 CCD 3363		9/30	WILLIAMS	5	E-50196	0700-1900	HEAVENLY ICP
ENG3 DS FIRE SUPPRESSION		10/4	DAGNELL	3	E-50161	0700-1900	HEAVENLY ICP
ENG3 NWS 1667		9/27	ARNDT	6	E-50177	0700-1900	HEAVENLY ICP
ENG3 TDOX BR21		10/7	SPRY	4	E-50345	0700-1900	HEAVENLY ICP
ENG4 DUKE CITY 401		10/3	LAKE	3	E-50276	0700-1900	HEAVENLY ICP
ENG6 TX-TXF E641		9/27	HICKS	4	E-466	0700-1900	HEAVENLY ICP
ENG6 FIRECO LLC		10/3	DOUGLASS	3	E-50282	0700-1900	HEAVENLY ICP
ENG6 METHOW RIVER 11		10/3	BELL	3	E-50277	0700-1900	HEAVENLY ICP
ENG6 METAL WORKS		10/3	SOUTHWICK	3	E-50281	0700-1900	HEAVENLY ICP
ENG6 FLASHOVER		10/2	VINCENT	3	E-50209	0700-1900	HEAVENLY ICP
WTS2 MARTIN		10/3	MARTIN	1	E-50241	0700-1900	HEAVENLY ICP
WTS3 RAVEN FIRE LLC		10/2	GADSBY	1	E-50249	0700-1900	HEAVENLY ICP
WTS3 BUSCHER ENGINES		10/7	BUSCHER	1	E-50289	0700-1900	HEAVENLY ICP

6. Work Assignments:
 TASK: Secure containment lines south of Lyons Lake. Utilize natural barriers as containment lines and take suppression action on the Smith Fire. Mop up to the extent necessary on the fires edge and provide for tactical patrol, responding to community needs along Hwy 50
 PURPOSE: Minimize any fire progression and ensure the safety of those working north of Hwy 50
 END STATE: Fires edge in the division is controlled and escape is improbable

7. Special Instructions:
 Backhaul trash, excess supplies and provide a location for accountable property
 Identify and coordinate the removal of hazard trees
 Resources denoted with * is identified as I/A resources within the TFR. **Resources denoted with *** are Lend Lease to the Rubicon Fire**
 Resources need to report to Heavenly ICP (3860 Saddle Rd., South Lake Tahoe, CA 96150) for briefing and end of shift

8. Communications							
Name	Ch	Function	Rx Freq	Rx Tone	Tx Freq	Tx Tone	Notes
COMMAND SEE ICS 205	1	COMMAND					
NIFC T1	6	TACTICAL	168.0500N		168.0500N		
A/G CMD	12	A/G CMD	167.9500N		167.9500N		
CALCORD	15	COORDINATION	156.0750N	156.7	156.0750N	156.7	
GUARD 16	16	EMERGENCY	168.6250N		168.6250N	110.9	

9. Prepared by: Name: Mike Yeun, Derek Acosta(T) RESL
 Signature: 
ICS 204 Date/Time: 9/26/2021 2200 Personnel Count: 83

ASSIGNMENT LIST (ICS 204 WF)

CONTROLLED UNCLASSIFIED
INFORMATION//BASIC

1. Incident Name: <p style="text-align: center; font-weight: bold;">CALDOR</p>	2. Operational Period: Date From: 09/27/21 Date To: 09/28/21 Time From: 0700 Time To: 0700	3. Branch Division <p style="text-align: center; font-size: 1.5em; font-weight: bold;">III O / P</p>
--	---	--

4. Operations Personnel: Operations Section Chief: Jim Snow, Mike Page(T) Branch Director: John Owings Division/Group Supervisor: Rob Noxon		Night Ops: Mike Koontz, Luis Gomez(T) Deputy Ops Al Ward, Chris St Pierre(T) Air Attack: Todd White
--	--	--

5. Resources Assigned:	** Resources Below in Bold are 12 Hour **							
Resource Identifier	ALS	LWD	Leader	Personnel	Request #	Hours	Reporting Location	
HC2 BIRRUETA REFORESTATION		10/1	BIRREUTA	20	C-50060	0700-1900	HEAVENLY ICP	
HC2 VA INTERAGENCY 01		10/2	FREEMAN	21	C-50063	0700-1900	HEAVENLY ICP	
* ENG3 TMU E341		9/29	KING	5	E-50090	0700-1900	HEAVENLY ICP	
ENG3 B5121		10/2	BRANDEBURG	4	E-50268	0700-1900	HEAVENLY ICP	
ENG3 MT-NWS 1262		9/30	WARD	3	E-50203	0700-1900	HEAVENLY ICP	
ENG3 J3 CONTRACTING E29		9/30	WALLACE	3	E-50215	0700-1900	HEAVENLY ICP	
ENG3 AMERICAN WILDFIRE		10/6	STANOVICH	3	E-50319	0700-1900	HEAVENLY ICP	
ENG4 SUNDANCE FIRE		10/3	TIERNEY	3	E-50283	0700-1900	HEAVENLY ICP	
ENG4 J3 CONSTRUCTION 1		10/4	STEENHUIZEN	3	E-21269	0700-1900	HEAVENLY ICP	
ENG5 YABOY E805		10/5	BAWER	3	E-50178	0700-1900	HEAVENLY ICP	
ENG6 E2628		9/29	SPARGO	2	E-50212	0700-1900	HEAVENLY ICP	
ENG6 MT-E646		10/4	MCHUGH	3	E-50204	0700-1900	HEAVENLY ICP	
ENG6 J3 CONTRACTING 3		10/2	KLOTZ	2	E-50314	0700-1900	HEAVENLY ICP	
FMOD NORTH ZONE FALLERS		10/1	NEALY	2	O-50341	0700-1900	HEAVENLY ICP	
FMOD GREEN JR		10/16	GREEN	2	O-50343	0700-1900	HEAVENLY ICP	
SOF2 MOYER		9/29	MOYER	1	O-50306	0700-1900	HEAVENLY ICP	
EMPF KEFFER	X	10/6	KEFFER	1	E-50129	0700-1100	HEAVENLY ICP	
EMPF SHEPPARD	X	10/6	SHEPPARD	1	E-50129	0700-1100	HEAVENLY ICP	

6. Work Assignments:
 TASK: Support crews taking suppression action near Trimmer Peak. Provide for a tactical patrol and respond to any calls for service. Coordinate with REAFs and mop up to the extent necessary on the fires edge and within the perimeter where infrastructure and values at risk are present.
 PURPOSE: Minimize any fire progression, keeping the fire within its current footprint
 END STATE: Fires edge in the division is controlled and escape is improbable

7. Special Instructions:
 Backhaul trash, excess supplies and provide a location for accountable property
 Identify and coordinate the removal of hazard trees
 Resources denoted with * is identified as I/A resources within the TFR. Resources denoted with *** are Lend Lease to the Rubicon Fire
 Resources need to report to Heavenly ICP (3860 Saddle Rd., South Lake Tahoe, CA 96150) for briefing and end of shift

8. Communications							
Name	Ch	Function	Rx Freq	Rx Tone	Tx Freq	Tx Tone	Notes
COMMAND SEE ICS 205	1	COMMAND					
NIFC T6	7	TACTICAL	166.7750N		166.7750N		
A/G CMD	12	A/G CMD	167.9500N		167.9500N		
CALCORD	15	COORDINATION	156.0750N	156.7	156.0750N	156.7	
GUARD 16	16	EMERGENCY	168.6250N		168.6250N	110.9	

9. Prepared by: Name:	Mike Yeun, Derek Acosta(T)	RESL	Signature:
ICS 204	Date/Time: 9/26/2021 2200		Personnel Count: 82

ASSIGNMENT LIST (ICS 204 WF)

CONTROLLED UNCLASSIFIED
INFORMATION/BASIC

1. Incident Name: <p style="text-align: center; font-size: 1.2em;">CALDOR</p>		2. Operational Period: Date From: 09/27/21 Date To: 09/28/21 Time From: 0700 Time To: 0700				3. Branch <p style="text-align: center; font-size: 1.5em;">III</p>		Division <p style="text-align: center; font-size: 1.5em;">Q</p>	
4. Operations Personnel: Operations Section Chief: Jim Snow, Mike Page(T) Branch Director: John Owings Division/Group Supervisor: Kristian Litz, Andy Wordin(T)						Night Ops: Mike Koontz, Luis Gomez(T) Deputy Ops: Al Ward, Chris St Pierre(T) Air Attack: Todd White			
5. Resources Assigned:		** Resources Below in Bold are 12 Hour **							
Resource Identifier	ALS	LWD	Leader	Personnel	Request #	Hours	Reporting Location		
HC1 SALMON IHC		10/6	LOFDHAL	18	C-50075	0700-1900	HEAVENLY ICP		
HC1 PIKE IHC		10/7	SMALLMAN	18	O-50082	0700-1900	HEAVENLY ICP		
HC2IA TANANA CHIEFS		9/27	SIMPLE	18	C-104	0700-1900	HEAVENLY ICP		
HC2IA TD CREW 21		9/28	ZINK	14	C-50053	0700-1900	HEAVENLY ICP		
* HC2IA IRON MOUNTAIN 31		9/30	MCKURTIS	18	C-50062	0700-1900	HEAVENLY ICP		
HC2IA TWIN PEAKS		10/9	FOREMAN	18	C-50100	0700-1900	HEAVENLY ICP		
HC2 RIFLE PEAK		9/28	ELLIS	22	C-50054	0700-1900	HEAVENLY ICP		
HC2 HVP 51		10/1	RITZMAN	18	C-50058	0700-1900	HEAVENLY ICP		
HC2 FRANCO 2		10/3	ALVAREZ	20	C-111	0700-1900	HEAVENLY ICP		
HC2 FRANCO 4		10/6	TAPIA	20	C-50070	0700-1900	HEAVENLY ICP		
S/T ENG3 CNF 6631C		10/7	HIXON	27	E-50324	0700-1900	HEAVENLY ICP		
* ENG3 TMU E344		10/3	AULD	5	E-50274	0700-1900	HEAVENLY ICP		
* ENG3 ENF E314		10/6	HOFFMAN	5	E-754	0700-1900	HEAVENLY ICP		
* ENG3 ENF E334		10/6	SAVOROSKI	5	E-755	0700-1900	HEAVENLY ICP		
* ENG3 ENF E353		10/7	CAI	5	E-756	0700-1900	HEAVENLY ICP		
* ENG3 ENF E365		10/6	BUNCH	5	E-757	0700-1900	HEAVENLY ICP		
ENG3 AZ-CENTRAL 66		10/1	KONTZ	4	E-50269	0700-1900	HEAVENLY ICP		
ENG3 AZ-SUM		10/2	GLAZENER	3	E-50270	0700-1900	HEAVENLY ICP		
ENG3 HTF 317		10/8	MCCOY	4	E-50344	0700-1900	HEAVENLY ICP		
ENG4 HEART VENTURES 2		10/3	BLACKCROW	3	E-50280	0700-1900	HEAVENLY ICP		
ENG4 IDAHO HEATSEEKER		10/3	JOHNSON	3	E-50290	0700-1900	HEAVENLY ICP		
6. Work Assignments: TASK: Actively suppress any fire along Schneider Camp 4x4 Rd. Reinforce existing containment lines and mop up to the extent necessary, utilizing natural barriers. Secure any heat sources between DP-65 and Scout Peak PURPOSE: Minimize any fire progression and ensure the safety of those working within the division END STATE: Fires edge in the division is controlled and escape is improbable									
7. Special Instructions: Backhaul trash, excess supplies and provide a location for accountable property Identify and coordinate the removal of hazard trees Resources denoted with * is identified as I/A resources within the TFR. Resources denoted with *** are Lend Lease to the Rubicon Fire Resources need to report to Heavenly ICP (3860 Saddle Rd., South Lake Tahoe, CA 96150) for briefing and end of shift									
8. Communications									
Name	Ch	Function	Rx Freq	Rx Tone	Tx Freq	Tx Tone	Notes		
COMMAND SEE ICS 205	1	COMMAND							
NIFC T3	8	TACTICAL	168.6000N		168.6000N				
A/G CMD	12	A/G CMD	167.9500N		167.9500N				
CALCORD	15	COORDINATION	156.0750N	156.7	156.0750N	156.7			
GUARD 16	16	EMERGENCY	168.6250N		168.6250N	110.9			
9. Prepared by: Name:		Mike Yeun, Derek Acosta(T)			RESL		Signature:		
ICS 204		Date/Time: 9/26/2021 2200			Personnel Count: 243				

ASSIGNMENT LIST (ICS 204 WF)

CONTROLLED UNCLASSIFIED
INFORMATION//BASIC

1. Incident Name: CALDOR	2. Operational Period: Date From: 09/27/21 Date To: 09/28/21 Time From: 0700 Time To: 0700	3. Branch Division III Q
---	---	---

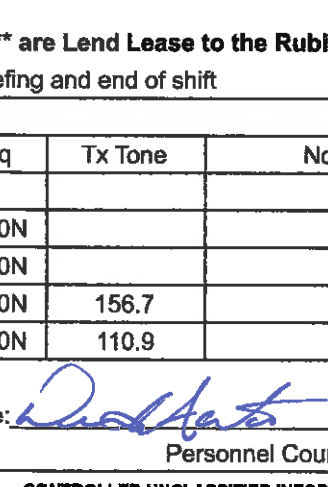
4. Operations Personnel:		Page 3 of 3 Quebec
Operations Section Chief: Jim Snow, Mike Page(T) Branch Director: John Owings Division/Group Supervisor: Kristian Litz, Andy Wordin(T)	Night Ops: Mike Koontz, Luis Gomez(T) Deputy Ops: Al Ward, Chris St Pierre(T) Air Attack: Todd White	

5. Resources Assigned:	** Resources Below in Bold are 12 Hour **							
Resource Identifier	ALS	LWD	Leader	Personnel	Request #	Hours	Reporting Location	
FMOD A&F ENTERPRISES 2		10/3	JENKINS	2	O-50344	0700-1900	HEAVENLY ICP	
FMOD A&A FALLERS		10/7	ADAMS	2	O-50513	0700-1900	HEAVENLY ICP	
FMOD TIMBER TIPPER		10/8	DANVILLE	2	O-50514	0700-1900	HEAVENLY ICP	
TFLD BROOKS		10/5	BROOKS	1	O-50484	0700-1900	HEAVENLY ICP	
TFLD EVANS		10/7	EVANS	1	O-50548	0700-1900	HEAVENLY ICP	
TFLD(T) GIESBRECHT		10/7	GIESBRECHT	1	O-50582	0700-1900	HEAVENLY ICP	
SOFR(T) CABANAS		10/3	CABANAS	1	O-50402	0700-1900	HEAVENLY ICP	
EMPF BUBEN	X	9/27	BUBEN	1	O-50170	0700-1900	HEAVENLY ICP	
EMPF DEAN		10/7	DEAN	1	O-50538	0700-1900	HEAVENLY ICP	
EMPF FLORES (UTV)	X	10/4	FLORES	1	E-50176	0700-1900	HEAVENLY ICP	
EMTF WIDICK (UTV)		10/4	WIDICK	1	E-50176	0700-1900	HEAVENLY ICP	

6. Work Assignments:
 TASK: Actively suppress any fire along Schneider Camp 4x4 Rd. Reinforce existing containment lines and mop up to the extent necessary, utilizing natural barriers. Secure any heat sources between DP-65 and Scout Peak
 PURPOSE: Minimize any fire progression and ensure the safety of those working within the division
 END STATE: Fires edge in the division is controlled and escape is improbable

7. Special Instructions:
 Backhaul trash, excess supplies and provide a location for accountable property
 Identify and coordinate the removal of hazard trees
 Resources denoted with * is identified as I/A resources within the TFR. Resources denoted with *** are Lend Lease to the Rubicon Fire
 Resources need to report to Heavenly ICP (3860 Saddle Rd., South Lake Tahoe, CA 96150) for briefing and end of shift

8. Communications							
Name	Ch	Function	Rx Freq	Rx Tone	Tx Freq	Tx Tone	Notes
COMMAND SEE ICS 205	1	COMMAND					
NIFC T3	8	TACTICAL	168.6000N		168.6000N		
A/G CMD	12	A/G CMD	167.9500N		167.9500N		
CALCORD	15	COORDINATION	156.0750N	156.7	156.0750N	156.7	
GUARD 16	16	EMERGENCY	168.6250N		168.6250N	110.9	

9. Prepared by: Name: Mike Yeun, Derek Acosta(T) RESL
 Signature: 
ICS 204 Date/Time: 9/26/2021 2200 Personnel Count: 14

ASSIGNMENT LIST (ICS 204 WF)

CONTROLLED UNCLASSIFIED
INFORMATION/BASIC

1. Incident Name: <p style="text-align: center; font-size: 1.2em;">CALDOR</p>		2. Operational Period: Date From: 09/27/21 Date To: 09/28/21 Time From: 0700 Time To: 0700				3. Branch <p style="text-align: center; font-size: 1.5em;">III</p>		Division <p style="text-align: center; font-size: 1.5em;">R</p>	
4. Operations Personnel: Operations Section Chief: Jim Snow, Mike Page(T) Branch Director: John Owings Division/Group Supervisor: Garth Crow						Night Ops: Mike Koontz, Luis Gomez(T) Deputy Ops: Al Ward, Chris St Pierre(T) Air Attack: Todd White			
5. Resources Assigned:		** Resources Below in Bold are 12 Hour **							
Resource Identifier	ALS	LWD	Leader	Personnel	Request #	Hours	Reporting Location		
HC2 FIRESTORM		10/2	LOPEZ	20	C-108	0700-1900	HEAVENLY ICP		
HC2 GRAYBACK FORESTRY		10/8	TOWNSEND	20	C-50092	0700-1900	HEAVENLY ICP		
ENG3 CCD 3324		10/1	VANDERSLICE	5	E-50195	0700-1900	HEAVENLY ICP		
ENG3 J3 CONTRACTING 2		10/4	MCANDREW	3	E-50294	0700-1900	HEAVENLY ICP		
ENG3 CORTEZ FPD		9/27	ANDERSON	5	E-50321	0700-1900	HEAVENLY ICP		
ENG3 TNF 333		10/8	ACHTER	6	E-50347	0700-1900	HEAVENLY ICP		
ENG3 OUTBACK		10/8	WOLLEBAEK	3	E-50346	0700-1900	HEAVENLY ICP		
ENG4 COOPER CONTRACTING		10/1	BURWELL	3	E-50223	0700-1900	HEAVENLY ICP		
ENG4 BOSKET'S PLUMBING		9/30	BAILEY	3	E-50202	0700-1900	HEAVENLY ICP		
ENG4 PACIFIC OASIS		10/3	WILSON	3	E-50285	0700-1900	HEAVENLY ICP		
ENG4 ID BOF E461		10/8	PATOTA	8	E-50348	0700-1900	HEAVENLY ICP		
ENG6 INDIANOLA		9/29	ALLSOP	3	E-50198	0700-1900	HEAVENLY ICP		
ENG6 N45		9/29	NAEGELE	2	E-50265	0700-1900	HEAVENLY ICP		
ENG6 BKF E664		9/29	WOLFF	4	E-50201	0700-1900	HEAVENLY ICP		
ENG6 OREGON WOODS INC		10/1	PARKINS	3	E-50210	0700-1900	HEAVENLY ICP		
ENG6 ALLEN FIRE LLC		10/1	ALLEN	3	E-50218	0700-1900	HEAVENLY ICP		
ENG6 TIMBER RIDGE		10/3	TODD	3	E-50284	0700-1900	HEAVENLY ICP		
ENG6 GRIZ ONE		10/3	TABER	3	E-50286	0700-1900	HEAVENLY ICP		
ENG6 FIRST STRIKE		10/3	FOOTE	3	E-50278	0700-1900	HEAVENLY ICP		
ENG6 YABOY FIRE		10/6	BRADY	3	E-50320	0700-1900	HEAVENLY ICP		
ENG6 WALCZYK		10/6	COLE	2	E-50322	0700-1900	HEAVENLY ICP		
6. Work Assignments: TASK: Secure existing line and utilize natural barriers as control lines. Mop up to the extent necessary near Silver Lake and secure any heat sources south of Hwy 88 PURPOSE: Minimize any fire progression and ensure the safety of those working near Hwy 88 END STATE: Fires edge in the division in controlled and escape is improbable									
7. Special Instructions: Backhaul trash, excess supplies and provide a location for accountable property Identify and coordinate the removal of hazard trees Resources denoted with * is identified as I/A resources within the TFR. Resources denoted with *** are Lend Lease to the Rubicon Fire Resources need to report to Heavenly ICP (3860 Saddle Rd., South Lake Tahoe, CA 96150) for briefing and end of shift									
8. Communications									
Name	Ch	Function	Rx Freq	Rx Tone	Tx Freq	Tx Tone	Notes		
COMMAND SEE ICS 205	1	COMMAND							
NIFC T7	9	TACTICAL	168.2500N		168.2500N				
A/G CMD	12	A/G CMD	167.9500N		167.9500N				
CALCORD	15	COORDINATION	156.0750N	156.7	156.0750N	156.7			
GUARD 16	16	EMERGENCY	168.6250N		168.6250N	110.9			
9. Prepared by: Name: Mike Yeun, Derek Acosta(T) RESL									
						Signature:			
ICS 204		Date/Time: 9/26/2021 2200			Personnel Count: 100				

ASSIGNMENT LIST (ICS 204 WF)

CONTROLLED UNCLASSIFIED
INFORMATION//BASIC

1. Incident Name: <p style="text-align: center; font-weight: bold;">CALDOR</p>		2. Operational Period: Date From: 09/27/21 Date To: 09/28/21 Time From: 0700 Time To: 0700				3. Branch Division <p style="text-align: center; font-size: 2em; font-weight: bold;">III Suppression Repair</p>	
4. Operations Personnel:						Page 1 of 3	
Operations Section Chief: Jim Snow, Mike Page(T) Branch Director: John Owings Division/Group Supervisor: Rob Bertolina				Night Ops: Mike Koontz, Luis Gomez(T) Deputy Ops Al Ward, Chris St Pierre(T) Air Attack: Todd White			
5. Resources Assigned:		** Resources Below in Bold are 12 Hour **					
Resource Identifier	ALS	LWD	Leader	Personnel	Request #	Hours	Reporting Location
HC2 PACIFIC COAST		10/2	CISNEROS	20	C-50003	0700-1900	HEAVENLY ICP
HC2 MILLER TIMBER		10/5	SCOTT	20	C-50069	0700-1900	HEAVENLY ICP
HC2 MOUNTAINEERING		10/5	PEREZ	20	C-50072	0700-1900	HEAVENLY ICP
UTIL CRAIG		9/30	CRAIG	3	E-50165	0700-1900	HEAVENLY ICP
WTS1 LOVATO		10/3	LOVATO	1	E-50248	0700-1900	HEAVENLY ICP
WTS1 ASPLIN ENTERPRISE		9/29	BECKER	1	E-50370	0700-1900	HEAVENLY ICP
WTS2 ABLE SERVICES		10/2	DREW	1	E-50240	0700-1900	HEAVENLY ICP
WTS2 AZ-RIO		9/28	COTA	2	E-50373	0700-1900	HEAVENLY ICP
WTT2 QUALITY CONST		10/1	INDIHOR	1	E-20008	0700-1900	HEAVENLY ICP
WTT2 SILVER STATE		10/6	OFIESH	2	E-50297	0700-1900	HEAVENLY ICP
WTS3 US RANCH		10/2	SALAZAR	1	E-50246	0700-1900	HEAVENLY ICP
DOZZ AAA EQUIP		10/8	HATLER	2	E-50353	0700-1900	HEAVENLY ICP
EXCA DAVIS CORP		10/11	MERRILL	2	E-688	0700-1900	HEAVENLY ICP
EXCA JW MORRISON		9/30	DALE	2	E-50229	0700-1900	HEAVENLY ICP
EXCA HACKER MACHINES		10/1	ARCE	2	E-50233	0700-1900	HEAVENLY ICP
EXCA PRO INC		10/2	ROE	2	E-50261	0700-1900	HEAVENLY ICP
EXCA BALDWIN DIESEL		10/2	MILLER	2	E-50232	0700-1900	HEAVENLY ICP
EXCA SERMON		10/2	SERMON	2	E-50260	0700-1900	HEAVENLY ICP
EXCA WESTERN MT EXCA		10/4	BUGLI	2	E-50264	0700-1900	HEAVENLY ICP
6. Work Assignments:							
TASK: Perform priority suppression repair work within Branch 3. Coordinate closely with CALFIRE AEU and USFS REAFs, focusing efforts of hazard tree removal along Scout Peak Rd and repair in Angora Mtn, Tahoe Mtn and High Meadows							
PURPOSE: Minimize any near-term environmental resource impacts as a result of fire suppression efforts							
END STATE: Watershed and areas adjacent to values at risk are protected using the approved standard							
7. Special Instructions:							
Backhaul trash, excess supplies and provide a location for accountable property							
Identify and coordinate the removal of hazard trees							
Resources denoted with * is identified as I/A resources within the TFR. Resources denoted with *** are Lend Lease to the Rubicon Fire							
Resources need to report to Heavenly ICP (3860 Saddle Rd., South Lake Tahoe, CA 96150) for briefing and end of shift							
8. Communications							
Name	Ch	Function	Rx Freq	Rx Tone	Tx Freq	Tx Tone	Notes
COMMAND SEE ICS 205	1	COMMAND					
VFIRE 24	10	TACTICAL	154.272N		154.2725N		
A/G CMD	12	A/G CMD	167.9500N		167.9500N		
CALCORD	15	COORDINATION	156.0750N	156.7	156.0750N	156.7	
GUARD 16	16	EMERGENCY	168.6250N		168.6250N	110.9	
9. Prepared by: Name:		Mike Yeun, Derek Acosta(T)		RESL		Signature:	
ICS 204		Date/Time: 9/26/2021 2200				Personnel Count: 86	

ASSIGNMENT LIST (ICS 204 WF)

CONTROLLED UNCLASSIFIED
INFORMATION//BASIC

1. Incident Name: <p style="text-align: center; font-weight: bold;">CALDOR</p>	2. Operational Period: Date From: 09/27/21 Date To: 09/28/21 Time From: 0700 Time To: 0700	3. Branch Division <p style="text-align: center; font-size: 2em; font-weight: bold;">III</p> <p style="text-align: center; font-weight: bold;">Suppression Repair</p>
--	---	--


4. Operations Personnel: Operations Section Chief: Jim Snow, Mike Page(T) Branch Director: John Owings Division/Group Supervisor: Rob Bertolina		Night Ops: Mike Koontz, Luis Gomez(T) Deputy Ops Al Ward, Chris St Pierre(T) Air Attack: Todd White
--	--	--

5. Resources Assigned:	** Resources Below in Bold are 12 Hour **							
Resource Identifier	ALS	LWD	Leader	Personnel	Request #	Hours	Reporting Location	
EXCA ON-SITE EQUIPMENT		10/8	SCHENCK	2	E-50355	0700-1900	HEAVENLY ICP	
EXCA HEAVYHAUL 1		10/8	HARRIS	2	E-20028	0700-1900	HEAVENLY ICP	
EXCA HEAVYHAUL 2		10/8	BAXTER	2	E-21346	0700-1900	HEAVENLY ICP	
GRD JDB3		9/27	WERRY	2	E-50147	0700-1900	HEAVENLY ICP	
CHIP CTS VENTURES		10/6	NIEVES	3	E-20611	0700-1900	HEAVENLY ICP	
CHIP MCKELLAR TREE SERV		9/28	AYALA	3	E-50134	0700-1900	HEAVENLY ICP	
CHIP SISKIYOU TREES		9/30	LANGE	3	E-50136	0700-1900	HEAVENLY ICP	
CHIP S&W DISASTER		10/6	HATCH	3	E-50305	0700-1900	HEAVENLY ICP	
MAST JANC		10/1	JANC	2	E-50251	0700-1900	HEAVENLY ICP	
MAST PERRAULT		10/1	DEQUIR	2	E-50250	0700-1900	HEAVENLY ICP	
FMOD UNDERDOG TIMBER 1		10/9	BROWN	2	O-232	0700-1900	HEAVENLY ICP	
*** FMOD UNDERDOG TIMBER 2		10/6	POOR	2	O-20140	0700-1900	HEAVENLY ICP	
FMOD SWEDBERG		10/7	MEHAFFEY	2	O-50512	0700-1900	HEAVENLY ICP	
FMOD RANDY&ROB FALLERS		10/7	SHAULIS	2	O-50516	0700-1900	HEAVENLY ICP	
TFLD PARDUE		10/6	PARDUE	1	O-50422	0700-1900	HEAVENLY ICP	
TFLD NELSON		10/6	NELSON	1	O-50334	0700-1900	HEAVENLY ICP	
TFLD(T) PATTERSON		10/8	PATTERSON	1	O-50508	0700-1900	HEAVENLY ICP	
HEQB IRWIN		10/5	IRWIN	1	O-50490	0700-1900	HEAVENLY ICP	
HEQB TRAPP		10/5	TRAPP	1	O-50491	0700-1900	HEAVENLY ICP	
HEQB(T) QUINN		10/4	QUINN	1	O-50497	0700-1900	HEAVENLY ICP	
HEQB(T) YANCEY		10/7	YANCEY	1	O-50500	0700-1900	HEAVENLY ICP	
HEQB(T) SPILLERS		10/8	SPILLERS	1	O-50504	0700-1900	HEAVENLY ICP	

6. Work Assignments:
 TASK: Perform priority suppression repair work within Branch 3. Coordinate closely with CALFIRE AEU and USFS REAFs, focusing efforts of hazard tree removal along Scout Peak Rd and repair in Angora Mtn, Tahoe Mtn and High Meadows
 PURPOSE: Minimize any near-term environmental resource impacts as a result of fire suppression efforts
 END STATE: Watershed and areas adjacent to values at risk are protected using the approved standard

7. Special Instructions:
 Backhaul trash, excess supplies and provide a location for accountable property
 Identify and coordinate the removal of hazard trees
 Resources denoted with * is Identified as I/A resources within the TFR. Resources denoted with *** are Lend Lease to the Rubicon Fire
 Resources need to report to Heavenly ICP (3860 Saddle Rd., South Lake Tahoe, CA 96150) for briefing and end of shift

8. Communications							
Name	Ch	Function	Rx Freq	Rx Tone	Tx Freq	Tx Tone	Notes
COMMAND SEE ICS 205	1	COMMAND					
VFIRE 24	10	TACTICAL	154.272N		154.2725N		
A/G CMD	12	A/G CMD	167.9500N		167.9500N		
CALCORD	15	COORDINATION	156.0750N	156.7	156.0750N	156.7	
GUARD 16	16	EMERGENCY	168.6250N		168.6250N	110.9	

9. Prepared by: Name: Mike Yeun, Derek Acosta(T) RESL
 Signature: 
ICS 204 Date/Time: 9/26/2021 2200 Personnel Count: 35

ASSIGNMENT LIST (ICS 204 WF)

CONTROLLED UNCLASSIFIED
INFORMATION//BASIC

1. Incident Name: <p style="text-align: center; font-weight: bold;">CALDOR</p>	2. Operational Period: Date From: 09/27/21 Date To: 09/28/21 Time From: 0700 Time To: 0700	3. Branch Division <p style="text-align: center; font-size: 2em; font-weight: bold;">III Suppression Repair</p>
--	---	--

Page 3 of 3

4. Operations Personnel: Operations Section Chief: Jim Snow, Mike Page(T) Branch Director: John Owings Division/Group Supervisor: Rob Bertolina	Night Ops: Mike Koontz, Luis Gomez(T) Deputy Ops Al Ward, Chris St Pierre(T) Air Attack: Todd White
--	--

5. Resources Assigned:	** Resources Below in Bold are 12 Hour **							
Resource Identifier	ALS	LWD	Leader	Personnel	Request #	Hours	Reporting Location	
EMPF CRUMPACKER	X	9/29	CRUMPACKER	1	O-50263	0700-1900	HEAVENLY ICP	
EMTF FLANDERS		9/27	FLANDERS	1	O-50276	0700-1900	HEAVENLY ICP	
EMTF MOYER		10/9	MOYER	1	O-50543	0700-1900	HEAVENLY ICP	
RAT1 (REMS)	X	10/4	HOOVER/PATTEN	2	E-50097	0700-1900	HEAVENLY ICP	
REAF BROWN			BROWN	1	O-169	0700-1900	HEAVENLY ICP	
REAF VAN SANT		9/29	VAN SANT	1	O-574	0700-1900	HEAVENLY ICP	
REAF DALLON		10/5	DALLON	1	O-50385	0700-1900	HEAVENLY ICP	
REAF LAESKE		10/4	LAESKE	1	O-50386	0700-1900	HEAVENLY ICP	
REAF LANGLEY		10/4	LANGLEY	1	O-50387	0700-1900	HEAVENLY ICP	
REAF KRAJA		10/1	KARJA	1	O-50388	0700-1900	HEAVENLY ICP	
ARCH BONSKOWSKI		10/14	BONSKOWSKI	1	O-344	0700-1900	HEAVENLY ICP	
THSP GUSSES		10/11	GUSSES	1	O-526	0700-1900	HEAVENLY ICP	

6. Work Assignments:
 TASK: Perform priority suppression repair work within Branch 3. Coordinate closely with CALFIRE AEU and USFS REAFs, focusing efforts of hazard tree removal along Scout Peak Rd and repair in Angora Mtn, Tahoe Mtn and High Meadows
 PURPOSE: Minimize any near-term environmental resource impacts as a result of fire suppression efforts
 END STATE: Watershed and areas adjacent to values at risk are protected using the approved standard

7. Special Instructions:
 Backhaul trash, excess supplies and provide a location for accountable property
 Identify and coordinate the removal of hazard trees
 Resources denoted with * is identified as I/A resources within the TFR. **Resources denoted with *** are Lend Lease to the Rubicon Fire**
 Resources need to report to Heavenly ICP (3860 Saddle Rd., South Lake Tahoe, CA 96150) for briefing and end of shift

8. Communications							
Name	Ch	Function	Rx Freq	Rx Tone	Tx Freq	Tx Tone	Notes
COMMAND SEE ICS 205	1	COMMAND					
VFIRE 24	10	TACTICAL	154.272N		154.2725N		
A/G CMD	12	A/G CMD	167.9500N		167.9500N		
CALCORD	15	COORDINATION	156.0750N	156.7	156.0750N	156.7	
GUARD 16	16	EMERGENCY	168.6250N		168.6250N	110.9	

9. Prepared by: Name: Mike Yeun, Derek Acosta(T) RESL
 Signature:
ICS 204 Date/Time: 9/26/2021 2200 Personnel Count: 13

ASSIGNMENT LIST (ICS 204 WF)

CONTROLLED UNCLASSIFIED
INFORMATION/BASIC

1. Incident Name: <p style="text-align: center;">CALDOR</p>	2. Operational Period: Date From: 09/27/21 Date To: 09/28/21 Time From: 0700 Time To: 0700	3. Branch Division <p style="text-align: center;">Night Night</p>
--	---	---


4. Operations Personnel:		Page 1 of 1
Operations Section Chief: Jim Snow, Mike Page(T) Branch Director: TBD Division/Group Supervisor: Jeff Corser(T)	Night Ops: Mike Koontz, Luis Gomez(T) Deputy Ops Al Ward, Chris St Pierre(T) Air Attack: Todd White	

5. Resources Assigned:	** Resources Below in Bold are 12 Hour **						
Resource Identifier	ALS	LWD	Leader	Personnel	Request #	Hours	Reporting Location
HCI PLUMAS IHC		10/5	SHERMAN	18	C-50080	1900-0700	HEAVENLY ICP
HC2IA NOREAST #3		10/7	BURGESS	20	C-50078	1900-0700	HEAVENLY ICP
S/T ENG3 ANF 1619C		10/7	NORTON	24	E-50323	1900-0700	HEAVENLY ICP
ENG3 BERTHOUD 613		10/6	PRIM	3	E-50317	1900-0700	HEAVENLY ICP
ENG4 WY CAMPPELL BRUSH 2		9/29	BURTON	3	E-50221	1900-0700	HEAVENLY ICP
ENG4 PVT E411		9/29	MARTIN	3	E-50197	1900-0700	HEAVENLY ICP
ENG4 IDAHO TRAILBLAZERS		10/6	TONEY	3	E-50315	1900-0700	HEAVENLY ICP
ENG6 MT-KNF 651		9/29	BERGET	8	E-50194	1900-0700	HEAVENLY ICP
ENG6 R04 311		10/6	TURNER	3	E-50200	1900-0700	HEAVENLY ICP
ENG6 BELLEVUE		9/30	ARENAS	2	E-50214	1900-0700	HEAVENLY ICP
ENG6 BLM AZ E3664		9/29	HINDMAN	7	E-50216	1900-0700	HEAVENLY ICP
ENG6 AZ-PNF E952		9/29	BADGER	7	E-50217	1900-0700	HEAVENLY ICP
ENG6 CONGAREE NP E632		10/6	JOHNSON	4	E-50313	1900-0700	HEAVENLY ICP
ENG6 TORCH FIRE		10/6	DAVIS	3	E-50318	1900-0700	HEAVENLY ICP
STEN(T) WHITE		9/29	WHITE	1	E-50221.1	1900-0700	HEAVENLY ICP
SOFR BALAO		10/5	BALAO	1	O-50528	1900-0700	HEAVENLY ICP
SOFR(T) AIROLA		10/5	AIROLA	1	O-50481	1900-0700	HEAVENLY ICP
MEDIC 2	X	9/29	ANDERSON/HOPKINS	2	E-20593	1900-0700	HEAVENLY ICP

6. Work Assignments:
 TASK: Engage in perimeter control efforts north of Caples Lake to Scout Peak, perform tactical patrol along highway corridors, respond to service calls, and mitigate any isolated heat sources within the fire perimeter where safe to do so
 PURPOSE: Minimize any fire progression, keeping the fire within its current footprint
 END STATE: Fires edge is controlled and escape is improbable

7. Special Instructions:
 Resources denoted with * is identified as I/A resources within the TFR.
Resources denoted with * are Lend Lease to the Rubicon Fire**
 Resources need to report to Heavenly ICP (3860 Saddle Rd., South Lake Tahoe, CA 96150) for briefing and end of shift

8. Communications							
Name	Ch	Function	Rx Freq	Rx Tone	Tx Freq	Tx Tone	Notes
COMMAND SEE ICS 205	1	COMMAND					
VFIRE 25	11	TACTICAL	154.2875N	156.7	154.2875N	156.7	
A/G CMD	12	A/G CMD	167.9500N		167.9500N		
CALCORD	15	COORDINATION	156.0750N	156.7	156.0750N	156.7	
GUARD 16	16	EMERGENCY	168.6250N		168.6250N	110.9	

9. Prepared by: Name: Mike Yeun, Derek Acosta(T) RESL
 Signature: 
ICS 204 Date/Time: 9/26/2021 2200 Personnel Count: 113

ICS 205 - INCIDENT RADIO COMMUNICATIONS PLAN

CONTROLLED UNCLASSIFIED
INFORMATION/BASIC

1. Incident Name: CALDOR EAST Z3	2. Date/Time Prepared Date: 09/26/2021 Time: 1800	3. Operational Period: Date To: 09/28/21 Time To: 0700
---	--	---

4. Communications									
Ch#	Function	Name	Assigned To	Rx Freq	Rx Tone	Tx Freq	Tx Tone	Notes	
1	COMMAND	CMD 5	EAST BRANCHES	169.7500N	146.2	167.1000N	146.2	MONUMENT PK LINKED W/ C67, C93, C96	
2	COMMAND	CMD 93	EAST BRANCHES	166.6875N	146.2	162.9375N	146.2	SCOUT LINKED W/C5, C67, C96	
3	COMMAND	CMD 67	EAST BRANCHES	172.0750N	146.2	162.2000N	146.2	KIRKWOOD MT, LINKED W/C5, C93, C96	
4	COMMAND	CMD 96	EAST BRANCHES	169.9625N	146.2	165.0500N	146.2	PYRAMID PEAK LINKED W/C5, C93, C67	
5	COMMAND	CMD 56	WEST BRANCHES	172.3500N	114.8	163.0375N	114.8	MONUMENT PK LINK TO WEST	
6	TACTICAL	NIFC T1	DIV I/M	168.0500N		168.0500N			
7	TACTICAL	NIFC T6	DIV O/P	166.7750N		166.7750N			
8	TACTICAL	NIFC T3	DIV Q	168.6000N		168.6000N			
9	TACTICAL	NIFC T7	DIV R	168.2500N		168.2500N			
10	TACTICAL	VFIRE 24	FIRE SUPP. REPAIR	154.2725N	156.7	154.2725N	156.7		
11	TACTICAL	VFIRE 25	NIGHT OPS	154.2875N	156.7	154.2875N	156.7		
12	A/G CMD	A/G CMD	ALL BRANCHES	167.9500N		167.9500N			
13	A/G TAC	A/G TAC	A/G BUCKETS	166.6125N		166.6125N			
14									
15	COORDINATION	CALCORD	ALL BRANCHES	156.0750N	156.7	156.0750N	156.7	MEDICAL COORDINATION	
16	EMERGENCY	GUARD 16	ALL BRANCHES	168.6250N		168.6250N	110.9	EMERGENCY USE ONLY	
17									
18									
19									
20	EMERGENCY	GUARD 16	ALL BRANCHES	168.6250N		168.6250N	110.9	EMERGENCY USE ONLY	

EAST COMMUNICATION 208-850-8987

6. Prepared by: Name: MIKE GREENE COML	Signature: 
Date/Time: 09/26/21 1800	Date/Time: 09/26/21 1800

ICS 205 - INCIDENT RADIO COMMUNICATIONS PLAN

CONTROLLED UNCLASSIFIED
INFORMATION//BASIC

1. Incident Name: CALDOR WEST Z1	2. Date/Time Prepared Date: 09/26/2021 Time: 1800	3. Operational Period: Date To: 09/28/21 Time To: 0700
---	--	---

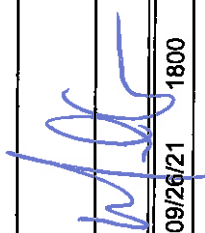
4. Communications									
Ch#	Function	Name	Assigned To	Rx Freq	Rx Tone	Tx Freq	Tx Tone	Notes	
1	COMMAND	CMD 109	WEST BRANCHES	170.3875N	114.8	162.1750N	114.8	BIG HILL	
2	COMMAND	CMD 104	WEST BRANCHES	170.7625N	114.8	165.6250N	114.8	NORTH OF HWY 50 BETWEEN DP 21 AND DP 24	
3	COMMAND	CMD 1	WEST BRANCHES	170.9750N	114.8	168.7000N	114.8	LEEK SPRINGS	
4	COMMAND	CMD 11	WEST BRANCHES	170.6875N	114.8	166.575N	114.8	GRIZZLY FLATS AREA	
5	COMMAND	CMD 113	WEST BRANCHES	170.3125N	114.8	165.6750N	114.8	KIRKWOOD MOUNTAIN	
6	COMMAND	CMD 116	WEST BRANCHES	171.0375N	114.8	162.5875N	114.8	SIERRA SKI RESORT	
7	COMMAND	CMD 105	WEST BRANCHES	172.4500	114.8	166.9375	114.8	SACRAMENTO HILL	
8	TACTICAL	NIFC T1	DIV G/T/W	168.0500N		168.0500N			
9	TACTICAL	NIFC T6	FIRE SUPP.REPAIR	166.7750N		166.7750N			
10	TACTICAL	NIFC T3		168.6000N		168.6000N			
11	TACTICAL	NIFC T7		168.2500N		168.2500N			
12	A/G CMD	A/G CMD	ALL BRANCHES	167.9500N		167.9500N		AIR TO GROUND	
13	A/G TAC	A/G TAC	A/G BUCKETS	166.6125N		166.6125N			
14									
15	MEDICAL	CALCORD	ALL BRANCHES	156.0750N	156.7	156.0750N	156.7	EMS COORDINATION ONLY	
16	EMERGENCY	GUARD 16	ALL BRANCHES	168.6250N		168.6250N	110.9	EMERGENCY USE ONLY	
17									
18									
19									
20	EMERGENCY	GUARD 16	ALL BRANCHES	168.6250N		168.6250N	110.9	EMERGENCY USE ONLY	

5. Special Instructions
CALDOR COMMUNICATION ICP HEAVENLY 208-850-8987

6. Prepared by (Communications Unit Leader): Name: MIKE GREENE COML	Signature: 
ICS 205 - CONTROLLED UNCLASSIFIED INFORMATION//BASIC	Date/Time: 09/26/2021 1800

ICS 205 - INCIDENT RADIO COMMUNICATIONS PLAN

CONTROLLED UNCLASSIFIED
INFORMATION//BASIC

1. Incident Name: TAHOE BASIN I/A		2. Date/Time Prepared Date: 09/26/21 Time: 1800		3. Operational Period: Date To: 09/28/21 Time To: 0700				
4. Communications								
Ch#	Function	Name	Assigned To	Rx Freq	Rx Tone	Tx Freq	Tx Tone	Notes
1	FOREST NET	ENF T9	ALL DIVS	171.5250N	156.7	162.7500N	T9-100.0	HAWKINS PK
2	FOREST NET	TMU T2	ALL DIVS	172.3750N	156.7	164.9625N	T2-123.0	EAST PK
3	FOREST NET	HTF T3	ALL DIVS	173.7750		165.7500N	T3-131.8	HAWKINS PK
4	TACTICAL	NIFC T1	ALL DIVS	168.0500N		168.0500N		
5	TACTICAL	NIFC T2	ALL DIVS	168.200N		168.200N		
6	TACTICAL	R5T4	ALL DIVS	166.5500N		166.5500N		
7	TACTICAL	R5T5	ALL DIVS	167.1125N		167.1125N		
8	TACTICAL	VFIRE22	ALL DIVS	154.2650N	156.7	154.2650N	156.7	
9	TACTICAL	VFIRE23	ALL DIVS	154.2950N	156.7	154.2950N	156.7	
10	TACTICAL	VFIRE 26	ALL DIVS	154.3025N	156.7	154.3025N	156.7	
11	TACTICAL	CCD SOA	ALL DIVS	171.6750N		171.6750N		AKA" BLM SOA"
12	TACTICAL	NDF RED 1	ALL DIVS	159.3450N		159.3450N		
13	AIR TO GROUND	A/G 14	ALL DIVS	167.5000N		167.5000N		I/A A/G-ENF/TMU
14	AIR TO GROUND	A/G 51	ALL DIVS	168.3125N		168.3125N		I/A A/G-SIERRA FRONT
15	MEDICAL	CALCORD	ALL DIVS	156.0750N	156.7	156.0750N	156.7	MEDICAL COORDINATION
16	EMERGENCY	GUARD	EMERGENCY	168.6250N		168.6250N	110.9	EMERGENCY CONTACT
17								
18								
19								
20	EMERGENCY	GUARD	EMERGENCY	168.6250N		168.6250N	110.9	EMERGENCY CONTACT
5. Special Instructions								
6. Prepared by (Communications Unit Leader): Name: MIKE GREENE						Signature: 		
ICS 205 - CONTROLLED UNCLASSIFIED INFORMATION//BASIC						Date/Time: 09/26/21 1800		

ICS 205 - INCIDENT RADIO COMMUNICATIONS PLAN

CONTROLLED UNCLASSIFIED
INFORMATION/BASIC

1. Incident Name: ENF/AEU INITIAL ATTACK ONLY	2. Date/Time Prepared Date: 09/26/2021 Time: 1800	3. Operational Period: Date From: 09/27/21 Time From: 0700 Date To: 09/28/21 Time To: 0700
---	--	---

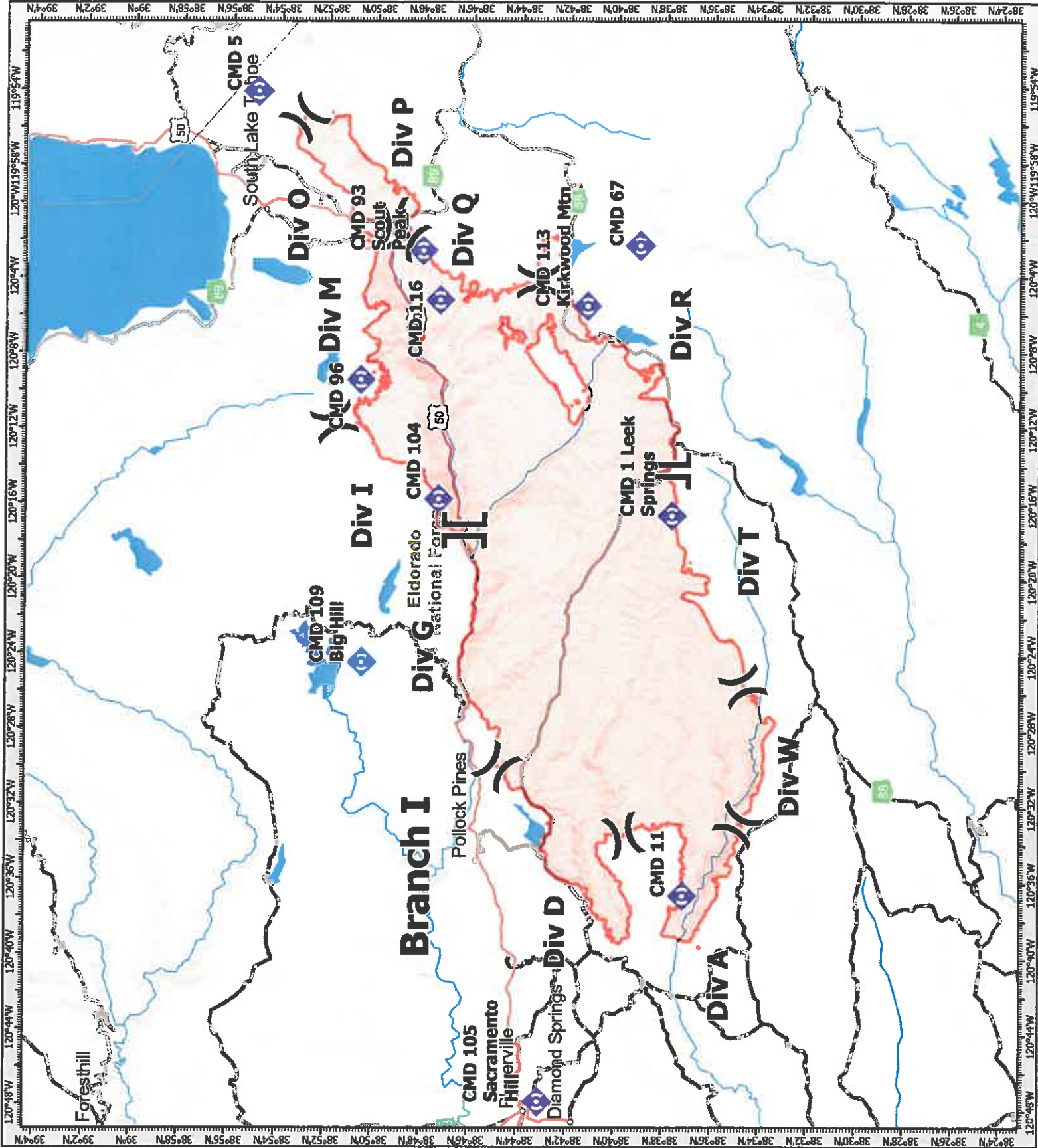
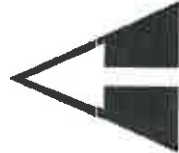
4. Communications									
Ch#	Function	Name	Assigned To	Rx Freq	Rx Tone	Tx Freq	Tx Tone	Notes	
1	COMMAND	ENFADM 1		172.3250N	156.7	165.2250N	110.9	FOREST ADMIN Tone 1-Alder	
2	COMMAND	ENFADM 2		172.3250N	156.7	165.2250N	123.0	FOREST ADMIN Tone 2-Leek Springs	
3	COMMAND	ENFADM 4		172.3250N	156.7	165.2250N	136.5	FOREST ADMIN Tone 4-Big Hill	
4	COMMAND	ENFADM 6		172.3250N	156.7	165.2250N	156.7	FOREST ADMIN Tone 6-Echo Summit	
5	COMMAND	XAM CT10		154.7625N	123.0	159.1800N	107.2	AMADOR CMD Tone 10-Leek Springs	
6	COMMAND	XAM CT11		154.7625N	123.0	159.1800N	114.8	AMADOR CMD Tone 11-Zion Mountain	
7	COMMAND	XED CT11		155.9025N	186.2	159.2775N	114.8	EL DORADO CMD Tone 11-Union	
8	COMMAND	XED CT1		155.9025N	186.2	159.2775N	110.9	EL DORADO CMD Tone 1-Alder	
9	COMMAND	XED CT4		155.9025N	186.2	159.2775N	136.5	EL DORADO CMD Tone 4-Big Hill	
10	TACTICAL	R5 T4		166.5500N		166.5500N		REGION 5 TAC 4	
11	TACTICAL	R5 T5		167.1125N		167.1125N		REGION 5 TAC 5	
12	TACTICAL	R5 T6		168.2375N		168.2375N		REGION 5 TAC 6	
13	TACTICAL	CDF T2		151.1600N	192.8	151.1600N	192.8		
14	TACTICAL	CDF T8		151.3700N	192.8	151.3700N	192.8		
15	AIR TO GROUND	A/G TAC	AIR TO GROUND	164.1375N		164.1375N			
16	EMERGENCY	GUARD 8	EMERGENCY	168.6250N		168.6250N	110.9		
17									
18									
19									
20	EMERGENCY	GUARD 8	EMERGENCY	168.6250N		168.6250N	110.9		

5. Special Instructions

6. Prepared by (Communications Unit Leader): Name: MIKE GREENE	Signature: 
ICS 205 - CONTROLLED UNCLASSIFIED INFORMATION/BASIC	NIMS IAP Date/Time: 09/26/2021 1800



- Division Break
- Branch Break
- Repeater
- Wildfire Daily Fire Perimeter



MEDICAL PLAN (ICS 206 WF) CIIMT 12

1. Incident Name				2. Operational Period				
CALDOR INCIDENT				Date/Time: 09/27/2021 – 09/28/2021 (24 hours)				
3. EMS / Ambulance Services/Aid Stations								
Name	Location			Frequency/Phone		Advanced Life Support (ALS) Yes No		
MEDICAL UNIT	ICP			805-813-3858 909-908-4778		X		
MOBILE MEDICAL SUPPORT TRAILER EL DORADO	EL DORADO BASE CAMP			805-813-3858 909-908-4778		X		
AMERICAN LEGION	CAMINO ECC SLT DISPATCH			530-647-5220 530-542-6148		X		
	CAMINO ECC SLT DISPATCH			530-647-5220 530-542-6148		X		
4. Air Rescue / Air Ambulance Services								
Name	Phone			Type of Aircraft & Capability				
H-3SH	CONTACT CALDOR COMMUNICATIONS			HELICOPTER, BLS – SHORT HAUL, HOIST, AND LITTER CAPABLE				
CAREFLIGHT	CAMINO ECC 530-647-5220			AIR AMBULANCE ALS – NO HOIST				
CALSTAR 6	CAMINO ECC 530-647-5220			AIR AMBULANCE ALS – NO HOIST				
5. Hospitals (all times estimated from incident location)								
Name & Level	GPS Datum – WGS 84 Degrees Decimal Minutes		Travel Time Air Gnd		Phone	Helipad Yes No		Address
BARTON MEMORIAL HOSPITAL (LEVEL 3)	Lat:	N 38° 54.72'	2 MIN	5 MIN	530-541-3420	X		2170 South Ave. South Lake Tahoe, CA 96150
	Long:	W 119° 59.72'						
RENOWN REGIONAL MEDICAL CENTER (LEVEL 2)	Lat:	N 39° 31.51'	20 MIN	1.5 HRS	775-982-2005	X		1156 Mill St Reno, NV 89502
	Long:	W 119° 47.75'						
SUTTER ROSEVILLE MEDICAL CENTER (LEVEL 2)	Lat:	N 38° 45.97'	45 MIN	3 HRS	916-781-1200	X		1 Medical Plaza Dr. Roseville, CA 95661
	Lat:	W 121° 14.87'						
UC DAVIS MEDICAL CENTER (LEVEL 1 TRAUMA/BURN)	Lat:	N 38° 33.32'	45 MIN	3 HRS	916-703-6576	X		2315 Stockton Blvd. Sacramento, CA 95817
	Long:	W 121° 27.35'						
6. Division / Crew Emergency Pre-Plan								<i>Update and discuss with assigned resources daily.</i>
Fireline EMT / Medic's Division / Branch Location								
Air Hoist site location site: Lat: / Long: / Elevation:								
Helispot: Lat: / Long: / Elevation:								
7. Prepared By (Medical Unit Leader)			8. Date/Time		9. Reviewed By (Safety Officer)		10. Date/Time	
MEDL NICK STEPANIAN 909-908-4778 MEDL BRANDON BENNEWATE 805-813-3858 <i>Brandon Bennenate</i>			09/26/2021 1600		SOF2 PAUL TOMPKINS 619-889-7533 <i>Paul Tompkins</i>		09/26/2021 1600	

MEDICAL PLAN (ICS 206 WF) CIIMT 12

Medical Incident Report

FOR A NON-EMERGENCY INCIDENT, WORK THROUGH CHAIN OF COMMAND TO REPORT AND TRANSPORT INJURED PERSONNEL AS NECESSARY.

FOR A MEDICAL EMERGENCY: IDENTIFY ON SCENE INCIDENT COMMANDER BY NAME AND POSITION AND ANNOUNCE "MEDICAL EMERGENCY" TO INITIATE RESPONSE FROM IMT COMMUNICATIONS/DISPATCH.

Use the following items to communicate situation to communications/dispatch.

1. CONTACT COMMUNICATIONS / DISPATCH (Verify correct frequency prior to starting report)

Ex: "Communications, Div. Alpha. Stand-by for Emergency Traffic."

2. INCIDENT STATUS: Provide incident summary (including number of patients) and command structure.

Ex: "Communications, I have a Red priority patient, unconscious, struck by a falling tree. Requesting air ambulance to Forest Road 1 at (Lat./Long.) This will be the Trout Meadow Medical, IC is TFLD Jones. EMT Smith is providing medical care."

Severity of Emergency / Transport Priority	<input type="checkbox"/> RED / PRIORITY 1 Life or limb threatening injury or illness. Evacuation need is IMMEDIATE <i>Ex: Unconscious, difficulty breathing, bleeding severely, 2° - 3° burns more than 4 palm sizes, heat stroke, disoriented.</i> <input type="checkbox"/> YELLOW / PRIORITY 2 Serious Injury or illness. Evacuation may be DELAYED if necessary. <i>Ex: Significant trauma, unable to walk, 2° - 3° burns not more than 1-3 palm sizes.</i> <input type="checkbox"/> GREEN / PRIORITY 3 Minor Injury or illness. Non-Emergency transport <i>Ex: Sprains, strains, minor heat-related illness.</i>	
Nature of Injury or Illness & Mechanism of Injury		<i>Brief Summary of Injury or Illness (Ex: Unconscious, Struck by Falling Tree)</i>
Transport Request		<i>Air Ambulance / Short Haul/Hoist Ground Ambulance / Other</i>
Patient Location		<i>Descriptive Location & Lat. / Long. (WGS84)</i>
Incident Name		<i>Geographic Name + "Medical" (Ex: Trout Meadow Medical)</i>
On-Scene Incident Commander		<i>Name of on-scene IC of incident within an incident (Ex: TFLD Jones)</i>
Patient Care		<i>Name of Care Provider (Ex: EMT Smith)</i>

3. INITIAL PATIENT ASSESSMENT: Complete this section for each patient as applicable (start with the most severe patient)

Patient Assessment: See IRPG PAGE 106

Treatment:

4. TRANSPORT PLAN:

Evacuation Location (if different): (Descriptive Location (drop point, intersection, etc.) or Lat. / Long.) Patient's ETA to Evacuation Location:

Helispot / Extraction Site Size and Hazards:

5. ADDITIONAL RESOURCES / EQUIPMENT NEEDS:

Example: Paramedic/EMT, Crews, Immobilization Devices, AED, Oxygen, Trauma Bag, IV/Fluid(s), Splints, Rope rescue, Wheeled litter, HAZMAT, Extrication :

6. COMMUNICATIONS: Identify State Air/Ground EMS Frequencies and Hospital Contacts as applicable

Function	Channel Name/Number	Receive (RX)	Tone/NAC *	Transmit (TX)	Tone/NAC *
COMMAND					
AIR-TO-GRND					
TACTICAL					

7. CONTINGENCY: Considerations: If primary options fall, what actions can be implemented in conjunction with primary evacuation method? Be thinking ahead. .

8. ADDITIONAL INFORMATION: Updates/Changes, etc. .

REMEMBER: Confirm ETA's of resources ordered. Act according to your level of training. Be Alert. Keep Calm. Think Clearly. Act Decisively. .

Fire and COVID-19 Briefing Checklist

Self-Awareness / Screening

- **Notify** supervisor if you or others experience:
 - Cough, more than expected
 - Difficulty breathing
 - Loss of taste or smell
 - Fever
 - Chills
 - Sore throat
 - Muscle pain
- **Immediately separate** yourself from others.
- Follow crew and division plans to isolate, triage, and transport symptomatic personnel.

Hygiene on the Fireline

- Properly wash or sanitize your hands often
- Avoid handshakes and communal use items
- Inform supervisor of needed resupply.
- Disinfect high touch surfaces often

Social distancing and protective equipment

- Practice social distancing
- Conduct briefings in conversations outdoors and at least **SIX** feet apart
- Utilize face coverings
- Clean or replace dirty face coverings, equipment, and PPE

Communications

- Ensure effective sender/receiver messaging.
- Protect yourself, your crew, and your camp!

Any questions contact:

BARTON HEALTH COVID HOTLINE: 530-600-1999

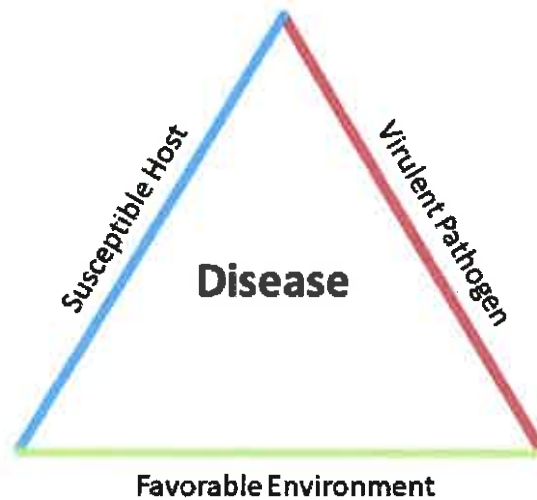
MEDL Brandon Bennewate @ (805) 813-3858

MEDL Nick Stepanian @ (909) 908-4778

You know about the fire triangle.



Do you know there is also a disease triangle?



Treat Covid just like you would a fire. Remove one of the legs of the triangle and the pandemic is that much closer to being over.

FEDERAL EMPLOYEES AND CONTRACTORS

EXTRACT FROM Secretary Vilsack and Deputy Secretary Bronaugh

Thank you to the tens of thousands of USDA employees who have already been fully vaccinated. For those of you who still need to be vaccinated, below are interim deadlines that will ensure you are two weeks from your last doses and thus fully vaccinated by the Nov. 22nd deadline. You can visit [vaccines.gov](https://www.vaccines.gov) to find a COVID-19 vaccine near you and learn more about the [benefits of vaccinations](#).

- **Oct. 11:** First dose deadline (Moderna COVID-19 vaccine)
- **Oct. 18:** First dose deadline (Pfizer COVID-19 vaccine)
- **Nov. 8:** Second dose deadline (Moderna and Pfizer vaccine)
- **Nov. 8:** First (only) dose deadline (Johnson and Johnson COVID-19 vaccine)
- **Nov. 22:** Federal employees must be fully vaccinated

Please be aware that USDA employees will be required to provide more information about vaccine status, including proof of vaccination. In the coming days, Pandemic Coordinators will be following up with their agency or staff office regarding how we will collect this information in a way that maintains privacy while also meeting new federal reporting requirements.

If interested, please reach out to COVID Advisors

East Caldor

Greg Flory 530-721-5975

West Caldor

Kayla Nimmo 785-475-5748



FINANCE MESSAGE

Fire Name: Caldor Fire
Fire Number: CA-ENF-024030
Accounting Code: P5N8GM21
Email: 2021.caldor.finance@firenet.gov
Hotline: 530-330-5450

If you were originally ordered on a CALFIRE contract and have not submitted a VIPR contract and RO or received an EERA (Fed contract) – CONTACT FINANCE TODAY you might not get paid.

Finance Documents Needed upon “Check In” (If Not Already Submitted):

Please email these documents or scan the QR Code below, attach & submit.			
Agency Equipment/ Crews: <ul style="list-style-type: none"> Manifest - showing employment type (GS or WG) or AD rates if applicable 	Overhead: <ul style="list-style-type: none"> AD/Casual Hire Form If regular Agency please ensure “GS” or “WG” is written on your first CTR 	Contract Equipment/ Contract Crews: <ul style="list-style-type: none"> Agreement Manifest Resource Order Inspections 	Cooperator: <ul style="list-style-type: none"> Cooperative Agreement Resource Order

Please submit your CTR/Shift Tickets using the QR code or email address below:

Don't Forget to put your RO # on your CTR/Shift Ticket – final travel CTR's must be signed by supervisor on incident - Thank You

Please Include the Word “Equipment” for Federal Equipment or “Time” for Federal Overhead & Crews in the Subject Line of the Email



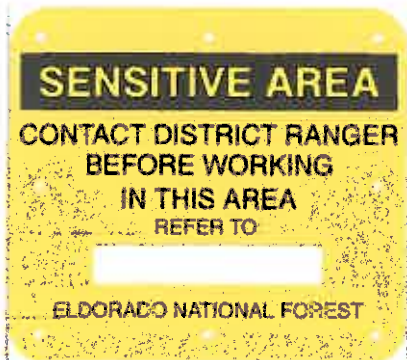
Resource Advisor Update

Avoidance areas for cultural and sensitive resources are being flagged within Divisions. If work needs to occur in areas identified by the following flagging/placard, please contact a REAF assigned to your Branch.

Avoidance Areas

Eldorado NF

**Pink/Black Checkered Flagging
and yellow placards**



LTBMU / Humboldt-Toiyabe NF

**Yellow and Green Paired
Flagging**



Eldorado NF Lead READ – Jen House

Lake Tahoe Basin Lead READ – Emma Williams

Training Message

September 27th 2021

To receive training credit for the *Caldor Fire*

- ◆ Email me your Completed 225 Eval's
- ◆ Fill out the online check in & exit interview
(QR code attached)
- ◆ Trainee's home unit
mailing address
- ◆ Evaluator's home unit
job title and name
- ◆ Position Task Book
Tasks sign-off

One day prior to demob, please start the close out procedures with us. We are working remotely and will do our best to answer any questions you may have. Please call or email me with your questions.

Thanks for your cooperation.

Morgan Madruga

TRAINING SPECIALIST TRAINEE

Merced Fire Department

99 E 16th st Merced, Ca 95340

209-386-2731

MorganMadruga@yahoo.com



Online Training Check-In



TNSP - Evaluation of Trainer

Fire Information

Public Information Office

California Team 12 - Fire Information is at your service. Not only do we provide service and information for our public during an incident but, we also provide a service to our Team, and all the personnel assigned. These services include and are not limited to the following:

Lost and Found: If you have lost it and someone has found stop by our trailer up front by security and claim it. Let us know that you lost something come by, fill out an S213 with your contact information and if it is found and brought to us we will contact you.

Mail: CALIMTeam-12 can/will provide mail services for you during your deployment: If you need to send or receive mail, please see the mailing address below. Sending letters or cards to your loved ones or mailing bills. Please, stamp your mail and it will be taken to the Post Office for you, if you don't have a stamp, we will provide one.

The mailing address is:



**Caldor Fire Camp
Attention: (Your Name & RO/Crew Name)
3680 Saddle Road
South Lake Tahoe, CA 96150**

Photos: To help us tell the story of the **CALDOR FIRE** and we appreciate photos but, **please do not** lose your situational awareness just for that one photo.

You can bring the photos by our shop or email them to: 2021.Caldor@firenet.gov

THANK YOU FOR YOUR SUPPORT and BE SAFE OUT THERE... 10's & 18

VIRTUAL DEMOBILIZATION

Please follow the steps below in order:

1. Scan the QR code and select the “REMOTE DEMOB” item.
PLEASE DO NOT complete this step more than 12-hours prior to your demobilization
2. Complete the questionnaire
3. Go to Weed Wash if your vehicle has driven on the Fire-line
4. Go to Ground Support for your post-inspection
5. Return items checked out from Supply
6. Return any items checked out in Communication
7. Go to Finance at the scheduled time to close out your CTR/Shift Tickets
8. Call DEMOB at 951-553-3415 to finalize your travel times.

PLEASE NOTE: If you have any problems contact Chris Adams (DEMOB UNIT LEADER) either by phone at 951-553-3415 or at DEMOB window.





TENATIVE CALDOR FIRE DEMOB LIST

09/27/2021

ORDER #	NAME	TIME
CREWS		
C-107	WHITE MOUNTAIN	0730
C-50079	TAHOE IHC (CA-TNF)	0730
C-50050	ZEPHYR 20	0730
C-50049	SLIDE MOUNTAIN	0730
C-50048	COPPER CONT.	0800
C-50047	MS REGULAR #1	0800
EQUIPMENT		
E-20790	LOW - TIMBERSMITH	0800
E-20757	MAST- TIMBERSMITH	0800
E-50279	ENG3 – CA-TNF	0830
OVERHEAD		
O-550	APACHITO, MARTIN	0830
O-50277	GRAY, BENJAMIN	0830
O-50261	HERRICK, CHANTEL	0830
O-50229	PEABODY, JARED	0900
O-50228	JACKSON, THOMAS	0900
O-20847	MILLER, JAKE	0900
O-20852	LINDSAY DON	0900
O-20854	LIM, ROBERTA	0930
O-20705	CHARLEY, SHELBY	0930

Hotel Acquisition Process

The Caldor incident has authorized the individual procurement of hotel accommodations. This is for lodging only. The process below discusses financial procedure and documentation:

If you are a **local agency dispatched through CFAA**, you will need to acquire an S# prior to demob. This number will also be entered on your F42 form.

Federal resources with a travel card will be processed through your agency's travel reimbursement process. Finance will provide a 213 with approval statement upon demob, if required by your agency.

All other non-federal resources, or federal resources that do not have purchasing capability, complete the following:

AD's who are able to pay and get reimbursed for travel will need to pay lodging and get reimbursed through your normal reimbursement process. You will be given a 213 with authorization statement from the finance section during demob.

For AD's and Seasonal Federal Employees who are unable to pay for lodging, the buying team may be able to assist with purchasing your accommodations. Inquire with the incident Finance Section. Federal resources who have the crew boss card option should use this as a first option.

In accordance with each individual contract, **contractors** shall pay for lodging and submit receipts for additions to your invoice (OF-286). Itemized receipts ARE required by the finance section during demob. Also, please note that double occupancy may be required on many contracts.

The finance section will provide S#'s during your demob or sooner.

If you're not in one of these categories or uncertain, finance can help you check. Please use the hotline number: 530-330-5450 or email 2021.Caldor.finance@firenet.gov. If emailing include your resource number, type of resource and contact phone number.

West side, Branch 1: Accommodations

Resources working the west side of the incident and briefing at the El Dorado Fairgrounds are expected to be self-sufficient for dinners and hotel accommodations. Breakfast, sack lunches, and hydration products will be provided at briefing. There is no need to return to the fairgrounds until the next briefing unless you need additional support services.

East side, Branch 3: All meals provided by the incident. To Acquire lodging:

Harvey's hotel is associated with Harrah's. They are across the street from each other and are joined by a tunnel under Hwy 50 on the Nevada side at the state line. They have opened the Harvey's hotel specifically for firefighters battling the Caldor fire. No public is staying at that property. **Hotel support and check in for Harvey's Hotel, including front desk services is located at the Harrah's property.** This includes check-in and any maintenance service. Large vehicle parking is at the large parking lot at Harrah's accessible off Lake Parkway. Small vehicles can access the parking structure at Harvey's. At both locations, collect the parking stub to go through the gate. There is no charge for parking. Exit gates will open from 0500 to 0700. You may still use your hotel card or ring for attendant to open the exit gate if needed.

To reserve a room, scan this code to make your reservation. Be sure to have your purchase card and crew manifest ready to enter the names of the personnel for each room configuration purchased with that card:



After reserving, go to the Harrah's front desk and complete registration. They are very understaffed, so please make every attempt to use the web link above to reserve, though you may also call the hotel desk at 775-691-0416 to reserve your room under "Caldor Fire".

Once you check in to the hotel on the Harrah's side, you will then proceed to Harvey's either through the underground tunnel or drive to the Harvey's parking structure. Note: the elevator bank closest to the (currently closed) Harvey's front desk is not in service for ascending (Descending works). You will need to use the Mountain Tower elevator bank by the arcade.

The hotel asks that if you would like trash pickup, please place your trash bags in the hallway and call the front desk to let them know where it is. They don't have enough staff to patrol the halls. They are also available to clean rooms and deliver towels and other items, but you will need to call the front desk for that as well.

ICP LOGISTICS NOTES

Supply: 0600-2100

Ordering: 0600-2100

Communications: 24/7 Techs: 0600-2100

Food: Breakfast: 0600-0930

Dinner: 1800-2130

Refer Trailer: 0600-2100

Showers: 0500-1300 & 1500-2200

Laundry service: 0500-2200

Ground Support: 0600-2200

Mechanic: 0600-2200

Weed Wash: 0600-1200 1300-2200

Fuel: 0600-1100 and 1400-2200

Medical: 24/7

-Barton Clinic: 0630-0930

-COVID testing: M-F 0600-1200

-Mobile Medical Supply Trailer: M-Su 0600-2200

PLEASE DO:

-Only drive ONE WAY in camp.

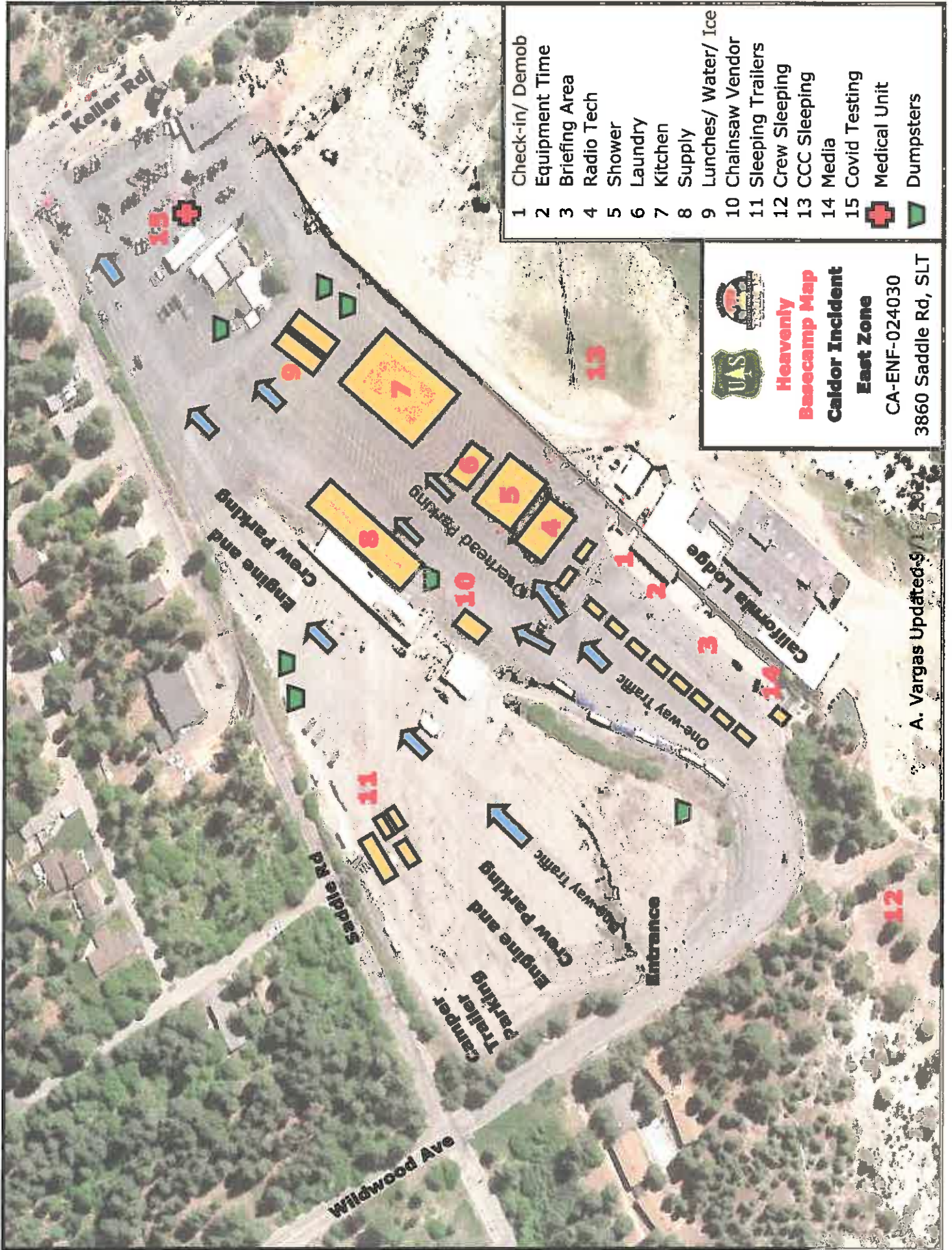
-Put trash in the dumpster and close the lid...we have Bears!

-Treat other people the way you want to be treated.

PLEASE DO NOT:

-Walk on the roads that vehicles drive on.

-Sleep in vehicle parking areas.

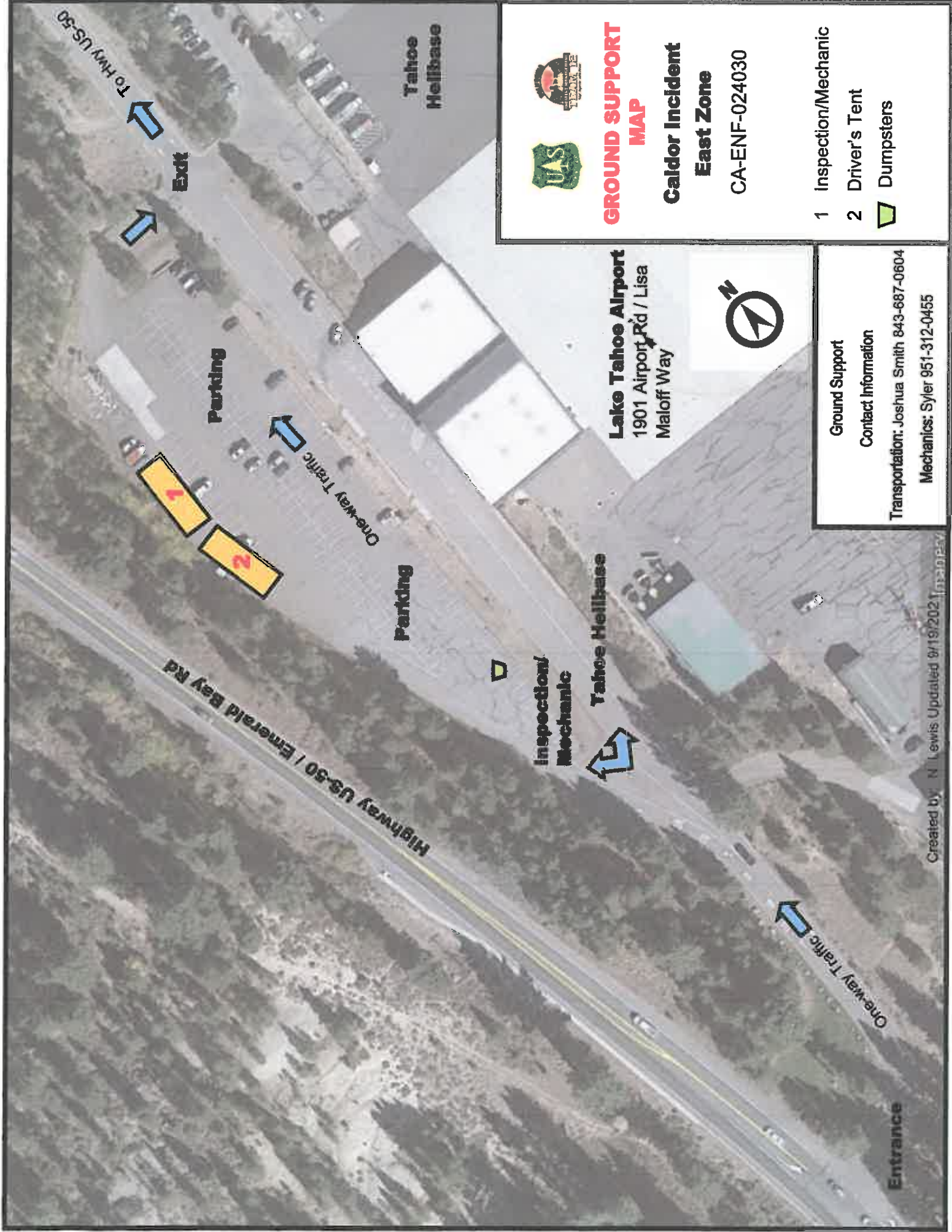


- 1 Check-in/ Demob
 - 2 Equipment Time
 - 3 Briefing Area
 - 4 Radio Tech
 - 5 Shower
 - 6 Laundry
 - 7 Kitchen
 - 8 Supply
 - 9 Lunches/ Water/ Ice
 - 10 Chainsaw Vendor
 - 11 Sleeping Trailers
 - 12 Crew Sleeping
 - 13 CCC Sleeping
 - 14 Media
 - 15 Covid Testing
- + Medical Unit
▾ Dumpsters




Heavenly Basecamp Map
Caldor Incident East Zone
 CA-ENF-024030
 3860 Saddle Rd, SLT

A. Vargas Updated 9/15/2022



**GROUND SUPPORT
MAP**

**Caldor Incident
East Zone
CA-ENF-024030**

- 1 Inspection/Mechanic
- 2 Driver's Tent
- ▭ Dumpsters

Lake Tahoe Airport
1901 Airport Rd / Lisa Maloff Way



**Ground Support
Contact Information**

Transportation: Joshua Smith 843-687-0604
Mechanics: Syler 951-312-0455

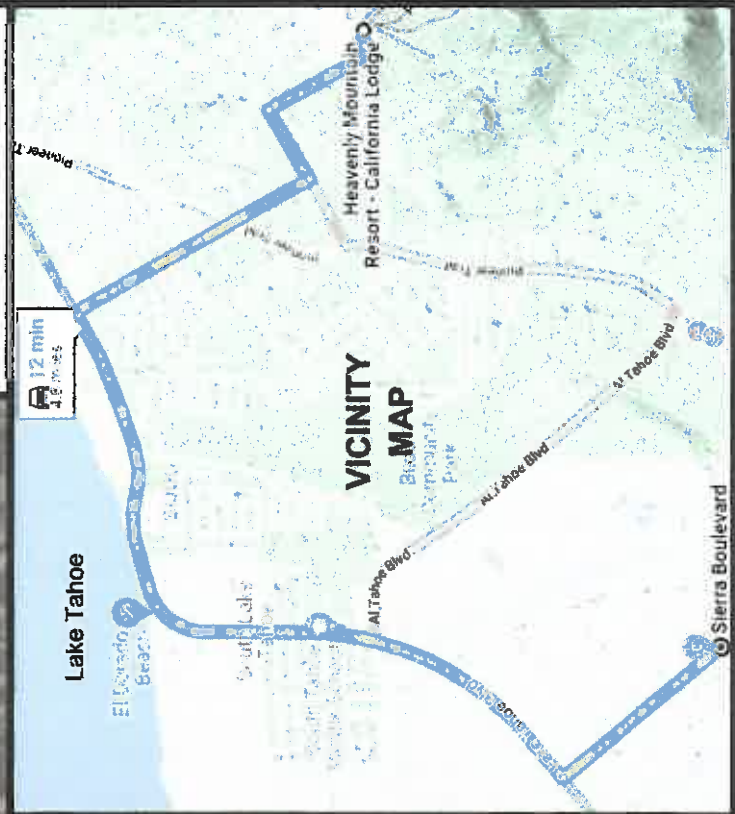


WEED WASH AND REFUEL MAP

Caldor Incident East Zone

CA-ENF-024030

- 1 Fuel Tender Lane 1
- 2 Fuel Tender Lane 2
- 3 Weed Wash





Eldorado Base Camp Caldor Incident



CA-ENF-024030
100 Placerville Dr. Placerville CA 95667

- 1 Fuel
- 2 Incident Commander-Planning
- 3 Logistics-Finance-PIO
- 4 Supply

➕ Medical Unit

▼ Covid Testing

▢ Dumpster

J.Mota Updated 09/26/2021

