

Sunday

# INCIDENT ACTION PLAN

## CALDOR INCIDENT

CA-ENF-024030  
P5N8GM21



Maps, IAP, Virtual Briefing



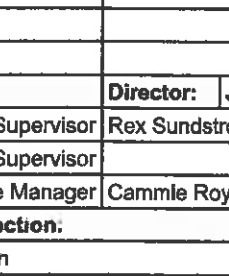
### OPERATIONAL PERIOD

9/19/2021      0700  
                         to  
9/20/2021      0700





## ORGANIZATION ASSIGNMENT LIST (ICS 203)

<b>1. Incident Name:</b> CALDOR		<b>2. Operational Period: Date From:</b> 9/19/2021 Time From: 0700		<b>Date To:</b> 9/20/2021 <b>Time To:</b> 0700	
<b>3. Incident Commander(s) and Command Staff:</b>			<b>7. Operation Section:</b>		
IC	Mike Nobles, James Aragon(T)		Operations	Jim Snow, Mike Page(T)	
Deputy IC			Deputy Ops	Al Ward, Chris StPierre(T)	
Safety Officer	Paul Tompkins, Mike Seymour(T), Trenton Prins(T)		Night Operations	Mike Koontz, Luis Gomez(T)	
Information Officer	Seneca Smith, DeLyn Siellet(T)				
Liaison Officer	Don Smith(T), Alan Taylor(T), Ryan Toby(T)		<b>Branch</b>	<b>I</b>	<b>Robert Szczepanek</b>
<b>4. Agency/Organization Representatives:</b>			Division/Group	G / T / W	Kevin Reese, Kevin Dejong(T), Charles Zimmerman(T)
Agency/Organization	Name		Division/Group	Suppression Repair	Ryan Waggoner
El Dorado NF - AA	Jeff Marsolais		Division/Group		
El Dorado NF - AA Rep.	Scot Rogers		Division/Group		
Lake Tahoe BMU - AA	Gwen Sanchez, Judy Palmer		Division/Group		
Humboldt Toiyabe NF - AA	Jon Stansfield		<b>Branch</b>	<b>III</b>	<b>John Owings</b>
CalFIRE Arep	Mike Blankenheim		Division/Group	I / M	Jason Flores
CalOES	Dave Stone, Kit Bailey		Division/Group	O / P	Rob Noxon
El Dorado SO	Deputy Greg Almos		Division/Group	Q	Kristian Litz, Andy Wordin(T)
Sierra Pacific Ind.	Tim Tate		Division/Group	R	Aaron Schumacher, James Searcy(T)
PG&E	Mike Webb		Division/Group	Suppression Repair	Rob Bertolina
Amador County SO	LT. Jason Navarre		<b>Branch</b>	<b>Night</b>	<b>TBD</b>
CHP	LT. Rick Hatfield		Division/Group	Night	TBD
Cal Trans	Greg Duffy		Division/Group		
AT&T	Kevan Young		Division/Group		
BLM	Jerry Martinez		Division/Group		
El Dorado Irrigation	Dan Corcoran		Division/Group		
East Fork FPD	Larry Goss		<b>Branch</b>	<b>Strategic Planning</b>	<b>Greg Overacker, JT Sohr</b>
COVID Advisor	Greg Flory, Ben Gray		Division/Group		
<b>5. Planning Section:</b>			Division/Group		
Chief	Steve Anderson, Greg White(T)		Division/Group		
Deputy	Ken Bates		Division/Group		
Resource Unit	Mike Yeun, Chris Adams, Derek Acosta(T)		Division/Group		
Situation Unit	Matt Snyder, Ray Rook(T), John Hamer (V)		<b>Branch</b>		
Documentation Unit	Nancy Nordensten(T)(V-RIST)		Division/Group		
Demobilization Unit	Jan Grisedale		Division/Group		
GISS	Rene Gonzalez		Division/Group		
FBAN	Dan O'Connor		Division/Group		
IMET	Mark Stubblefield, Patrick Gilchrist		Division/Group		
Human Resources	Linda Overton		<b>Air Operations Branch</b>		<b>Director: JoAnn Overacker</b>
Lead READ	Emma Williams, Jennifer House		Air Support Group Supervisor		Rex Sundstrom(T)
<b>6. Logistics Section</b>			Air Tactical Group Supervisor		
Chief	Scott Ashbach		Hellbase Manager		
Supply Unit	Ruben Lopez(T)		Cammie Roy, Scott Magargee(T)		
Facilities Unit	Art Curley, Wendell Simmons(T)		<b>8. Finance/Administration Section:</b>		
Ground Support Unit	Rickey Tootle, Chris Syler		Chief	Lisa Wilson	
Communications Unit	Mike Greene		Time Unit	Rebecca Lang(T)	
Medical Unit	Brandon Bennewate, Nic Stepanian		Cost Unit		
ITSS	Brett Davidson		Comp/Claims Unit	Roger Waters, Tracy Nicholson (V)	
FOOD	Mikeal Gates		PTRC		
			EQTR	Cara Scott, Christina Welch, Rachel Acker(V), Katina Bryant(V)	
<b>Prepared By: Name:</b>	Greg White	<b>Position/Title:</b>	PSC2 (T)	<b>Signature:</b>	
<b>ICS 203</b>		<b>Date/Time:</b>	9/18/2021 2300 hours		



# INCIDENT WEATHER FORECAST



FORECAST NO: 32  
 PREDICTION FOR: 24 Hour Shift  
 SHIFT DATE: 09/19/21  
 FORECAST ISSUED: 09/18/21 1840

NAME OF FIRE: Caldor  
 UNIT: USFS El Dorado NF  
 SIGNED: Mark Stubblefield  
 Incident Meteorologist

***WEATHER DISCUSSION:*** A cold front will move across the area early this morning with a chance for rain showers through mid-morning then decreasing through the afternoon. The strong southwest winds will decrease this afternoon. Surface high will build east of the fire tonight through Monday night with increasing northeasterly winds. This could create critical fire weather conditions in Branch I with rapid drying and strong easterly winds tonight through Tuesday morning. High temperatures will rebound quickly on Monday.

**.....FIRE WEATHER WATCH WEST OF THE SIERRA CREST 2300 TONIGHT THROUGH 1100 TUESDAY...**

**.TODAY...**

Sky/weather..... Mostly cloudy and Windy. 40% chance of rain in the morning... 20% chance afternoon. Snow possible down to 9000 feet with little or no accumulation.  
 Max temperature...63 to 68 above 5000 feet and 73 to 78 below 5000 feet.  
 Min humidity.....30 to 40.  
 Wind (20 ft).....  
 Slope/valley..... Southwest 18 to 28 MPH with gusts to 38 MPH in the morning...decreasing to 10 to 15 MPH by late afternoon.  
 Ridgetop.....Southwest 30 to 35 MPH...gusts to 45 MPH possible in the morning...becoming southwest 10 to 15 MPH by late afternoon.  
 Mixing height.....near surface...becoming 4,000 ft AGL mid-afternoon.

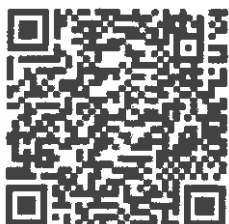
**.TONIGHT...Sky/weather: Partly cloudy.**

Min temperature.....30 to 36 above 5000 feet and 45 to 53 below 5000 feet.  
 Max humidity.....70 to 80 percent before 2100 then becoming 35 to 45 after 0200.  
 Wind (20 ft).....  
 Slope/valley..... Northeast 12 to 18 MPH...gusts to 28 MPH.  
 Ridgetop.....Northeast 25 to 30 MPH...gusts to 45 MPH possible.

**.MONDAY...Sky/weather: Mostly sunny.**

Max temperature.....60 to 65 above 5000 feet and 78 to 83 below 5000 feet.  
 Min humidity.....13 to 18 percent.  
 Wind (20 ft).....Northeast winds 15 to 20 MPH with gusts to 30 MPH. Stronger winds possible in passes and southwestern aspects.  
 Ridgetop.....northeast 20 to 30 MPH...gusts to 40 MPH possible.  
 Mixing height... near surface...becoming 4,500 ft AGL mid-afternoon.

Incident Weather Station Data – SCAN Code with Smart Phone  
 Branch I



Branch III



## FIRE BEHAVIOR FORECAST

<b>FORECAST NUMBER:</b> 3	<b>TYPE OF FIRE:</b> Vegetation
<b>FIRE NAME:</b> Caldor	<b>OPERATIONAL PERIOD:</b> Sept 19 <sup>th</sup> 24 Hour
<b>DATE ISSUED:</b> Sept 18 <sup>th</sup>	<b>TIME ISSUED:</b> 2000
<b>UNIT:</b> CA El Dorado National Forest/Lake Tahoe Basin Management Unit	<b>SIGNED:</b> Dan O'Connor Fire Behavior Analyst (FBAN)

**WEATHER SUMMARY:** See detailed Fire Weather Forecast in IAP

### FUELS:

Fire areas include a range of conifer systems with Ponderosa, Jeffrey Pine, Incense Cedar, and manzanita in the lower elevations towards the west, transitioning up into an Upper Montane forest of Ponderosa, Lodgepole Pine and Red Fir closer to Lake Tahoe. Anticipate heavy fuel loading, drought stress, overstocked timber stands, and a lack of fire history to both the north and south of the current fire footprint. The El Dorado National Forest is currently classified as 'Extreme to Exceptional' drought by the US Drought Monitor, with Energy Release Components exceeding the 90<sup>th</sup> percentile, not far off all time high levels. Heavy dead and down fuels will likely burn completely, holding heat and actively consuming through all hours of the day. Fine dead fuel moisture is calculated at 4% or less.

### EXPECTED FIRE BEHAVIOR: *Based on the Warmest, Driest, Windiest Conditions Forecasted*

Maximum Spotting Distance ¾ –1 mile Probability of Ignition 65 %	Fuel Type/Model	Maximum Rate of Spread (chains/hour)	Maximum Flame Length (feet)
	Timber understory (TU5-Overstocked and/or dense reprod)	Head 40-45 ch/hr Flank 25-30 ch/hr	Head 14-18 ft Flank 8-10 ft
	Timber litter (TL6-closed canopy, ground fuels)	Head 5-7 ch/hr Flank 3-5 ch/hr	Head 3-5 ft Flank 2-4 ft

**General:** Another round of increased wind speeds will assist the fire in moving from the ground up into the crowns, especially on wind/slope aligned runs. The primary spread model is torching/spotting, so any fire that is able to elevate into the canopies has the potential to loft embers and create spot fires outside current containment lines.

### SPECIFIC

**Branch 1** Division Gulf will likely see the gusty SW winds along the river corridor, threatening to loft holdover heat source embers to the north where slope, aspect, and wind will support rapid fire growth. Low probability due to all the good work from ground crews, but high consequence area for spotting.

#### Branch 3

Divisions India and Mike do have scattered heat with smoldering and smoke production interior as well as in rocked out areas along the northern perimeters. These areas may see some wind blockage and will not be in alignment, but looking out ahead could be impacted by strong winds from the east after the system passes early next week. Communities along the Highway 50 corridor are another low probability/high consequence area if stubborn heat sources are able to find a path into the crowns with increased winds in the river corridor.

Divisions Quebec and Romeo have widespread scattered heat along the fire edge, with potential for ground fire to elevate into the crowns with support from gusty SW winds today. Fire that does become established with group torching or crown runs will likely cause long range spotting downwind.

Divisions Oscar and Papa do have high severity fire areas in the interior, but the edges are more mosaic severity so reburning and flare ups with threats to containment lines and adjacent communities are still possible. Areas closer to Christmas Valley may be more exposed to SW winds due to terrain enhancement.

**Night Operations:** Change in wind direction for the night shift tonight, with gusty winds from the NE testing lines along the southern end of the fire. Potential for reburn in the dirty burn areas due to drought conditions.

### AIR OPERATIONS:

Potential turbulent winds may limit ability for aircraft to support missions again today.

### SAFETY:

The El Dorado NF has a history of fires coming back to life during drought years. Keep your guard up and communicate any increases in fire behavior near values at risk and containment lines.

<b>Lookouts</b> <b>Communications</b> <b>Escape Routes</b> <b>Safety Zones</b>	<b>Caldor Incident</b> <b>Operation Period: 9/19-20/2021 Day/Night Shift: 0700-0700</b>
	<b>SAFETY MESSAGE</b>

**FOCUS YOUR ATTENTION ON:**

- **Driving safely:** Getting to and from the work assignment may be one of the more hazardous activities on this incident.
- **Identifying Hazards:** Size up the work area to identify all potential and existing hazards associated with the environment and assignment.
- **Mitigate Hazards:** Remove hazards or avoid them. Utilize hazard control measures to reduce risk.
- **Use of PPE:** Please ensure the appropriate PPE is in use to protect from the hazards found in your work area

**MAJOR HAZARDS AND RISKS**

WINDS SNAGS FATIGUE	DRIVING COMPLACENCY DEHYDRATION	HEAVY EQUIPMENT CHAINSAW OPS STUMP HOLES
---------------------------	---------------------------------------	--

*Be sure all elements of your safety plan are in place prior to engagement*

**Situational Awareness**

Help maintain your Situational Awareness by doing the following:

- Constantly observing your environment.
- Interpret and process information received.
- Sharing information by discussing the situation.

**Risk Management**

- Keep risks commensurate with the benefit.
- Utilize the Risk Management Process found on page 1 of the IRPG.
- Recognize that no injury is worth the ground you are working.
- Everyone is entitled to a round trip ticket. Bring them home healthy.

# ASSIGNMENT LIST (ICS 204 WF)

CONTROLLED UNCLASSIFIED  
INFORMATION//BASIC

<b>1. Incident Name:</b> <p style="text-align: center;"><b>CALDOR</b></p>	<b>2. Operational Period:</b> Date From: 09/19/21    Date To: 09/20/21 Time From: 0700        Time To: 0700	<b>3. Branch</b> <b>Division</b> <p style="text-align: center;"><b>I</b>                                      <b>G / T / W</b></p>
--	---	---

Page 1 of 1

<b>4. Operations Personnel:</b>	
Operations Section Chief: <b>Jim Snow, Mike Page(T)</b> Branch Director: <b>Robert Szczepanek</b> Division/Group Supervisor: <b>Kevin Reese, Kevin Dejong(T), Charles Zimmerma</b>	Night Ops: <b>Mike Koontz, Luis Gomez(T)</b> Deputy Ops <b>Al Ward, Chris StPierre(T)</b> Air Attack:

<b>5. Resources Assigned:</b>		<b>** Resources Below in Bold are 12 Hour **</b>					
Resource Identifier	ALS	LWD	Leader	Personnel	Request #	Hours	Reporting Location
ENG3 CO-PIAX 33		9/20		3	E-21263	0700-1900	8 Mile Camp
ENG3 NV-B5331		9/30	<b>ARROYO</b>	4	E-50207	0700-1900	8 Mile Camp
ENG3 ROCKY MTN		9/30	<b>STREHLE</b>	3	E-50206	0700-1900	8 Mile Camp
ENG4 HEART VENTURES		9/30	<b>WETZEL</b>	3	E-50193	0700-1900	8 Mile Camp
ENG6 CIF 671		9/19		3	E-21280	0700-1900	8 Mile Camp
ENG6 WHITEGRASS FIRE		9/30	<b>WHITEGRASS</b>	3	E-50266	0700-1900	8 Mile Camp
ENG6 GOODING		9/30	<b>MCKINNEY</b>	2	E-50199	0700-1900	8 Mile Camp
ENG6 RED DOG		9/30	<b>ENGLAND</b>	3	E-50205	0700-1900	8 Mile Camp
WTS1 ASAP		10/2	<b>DIXON</b>	2	E-20015	0700-1900	8 Mile Camp
WTT2 AWB		9/30	<b>KEENE</b>	2	E-20009	0700-1900	8 Mile Camp
SKD SOFT TRACK ATTACK		10/4	<b>EMERY</b>	1	E-246	0700-1900	8 Mile Camp
SOFR BARNHART		9/20	<b>BARNHART</b>	1	O-20796	0700-1900	8 Mile Camp
SOFR KAMNIKAR		9/20	<b>KAMINKAR</b>	1	O-20794	0700-1900	8 Mile Camp
EMPF DIEM	X	9/30	<b>DIEM</b>	1	O-50312	0700-1900	8 Mile Camp
EMPF STAPLES	X	9/22	<b>STAPLES</b>	1	E-50129	0700-1900	8 Mile Camp
EMPF HANNA	X	9/22	<b>HANNA</b>	1	E-50129	0700-1900	8 Mile Camp
EMTF MAKEMSON		9/30	<b>MAKEMSON</b>	1	O-50317	0700-1900	8 Mile Camp

**6. Work Assignments:**  
 TASK: Secure existing line and provide for tactical patrol within the Hwy 50 corridor. Mop up to the extent necessary on the fires edge and within the perimeter where infrastructure and values at risk are present  
 PURPOSE: Minimize any fire progression and ensure the safety of those working on the west side of Mormon Emigrant Trail  
 END STATE: Fires edge in the division is controlled and escape is improbable

**7. Special Instructions:**  
 Backhaul trash, excess supplies and provide a location for accountable property  
 Identify and coordinate the removal of hazard trees  
 Resources denoted with \* is identified as I/A resources within the TFR  
 \*\*\*Resources need to report to 8 Mile Camp (4260 8 Mile Rd, Camino, CA 95709) for briefing and end of shift\*\*\*

<b>8. Communications</b>							
Name	Ch	Function	Rx Freq	Rx Tone	Tx Freq	Tx Tone	Notes
SEE ICS 205 COMM PLAN							

**9. Prepared by: Name:** Mike Yeun, Chris Adams, Derek Acosta(T)                      RESL  
 Signature:

**ICS 204**                      Date/Time: 9/18/2021 2200                      Personnel Count: 35



# ASSIGNMENT LIST (ICS 204 WF)

CONTROLLED UNCLASSIFIED  
INFORMATION/BASIC

<b>1. Incident Name:</b> <p style="text-align: center; font-weight: bold;">CALDOR</p>	<b>2. Operational Period:</b> Date From: 09/19/21    Date To: 09/20/21 Time From: 0700            Time To: 0700	<b>3. Branch</b> <b>Division</b> <p style="text-align: center; font-size: 2em; font-weight: bold;">1</p> <p style="text-align: center; font-weight: bold;">Suppression Repair</p>
--	---	--

Page 1 of 3

<b>4. Operations Personnel:</b> Operations Section Chief: <b>Jim Snow, Mike Page(T)</b> Branch Director: <b>Robert Szczepanek</b> Division/Group Supervisor: <b>Ryan Waggoner</b>	Night Ops: <b>Mike Koontz, Luis Gomez(T)</b> Deputy Ops <b>Al Ward, Chris StPierre(T)</b> Air Attack:
--	---

5. Resources Assigned:	** Resources Below in Bold are 12 Hour **						
Resource Identifier	ALS	LWD	Leader	Personnel	Request #	Hours	Reporting Location
<b>GROUP #1 MET</b>							
<b>FEL1 SIERRA NEVADA</b>				1	<b>E-699</b>	<b>0700-1900</b>	<b>8 Mile Camp</b>
<b>SKD SIERRA FOREST 2</b>		<b>9/30</b>	<b>WASS</b>	1	<b>E-705</b>	<b>0700-1900</b>	<b>8 Mile Camp</b>
<b>SKD SIERRA FOREST 3</b>		<b>9/30</b>	<b>DUARTE</b>	1	<b>E-706</b>	<b>0700-1900</b>	<b>8 Mile Camp</b>
<b>LOAD SIERRA NEVADA 2</b>		<b>9/30</b>	<b>DIBBLE</b>	1	<b>E-50173</b>	<b>0700-1900</b>	<b>8 Mile Camp</b>
<b>PROC PATHFINDER</b>		<b>9/30</b>	<b>FULTON</b>	1	<b>E-730</b>	<b>0700-1900</b>	<b>8 Mile Camp</b>
<b>FAL1 HERREN</b>		<b>9/22</b>	<b>HERREN</b>	2	<b>O-532</b>	<b>0700-1900</b>	<b>8 Mile Camp</b>
<b>GROUP #2 MET</b>							
<b>FEL PATHFINDER</b>		<b>9/30</b>	<b>SMITH</b>	1	<b>E-702</b>	<b>0700-1900</b>	<b>8 Mile Camp</b>
<b>SKD SIERRA FOREST 1</b>		<b>9/30</b>	<b>MARTIN</b>	1	<b>E-704</b>	<b>0700-1900</b>	<b>8 Mile Camp</b>
<b>LOAD SIERRA NEVADA 1</b>		<b>9/30</b>	<b>STANDBRIDGE</b>	1	<b>E-50172</b>	<b>0700-1900</b>	<b>8 Mile Camp</b>
<b>SKD SIERRA FOREST 5</b>		<b>9/30</b>	<b>MARVIN</b>	1	<b>E-708</b>	<b>0700-1900</b>	<b>8 Mile Camp</b>
<b>GROUP #3 SKI RESORT</b>							
<b>FEL2 J&amp;R LOGGING</b>		<b>9/30</b>	<b>JIMENEZ</b>	1	<b>E-50151</b>	<b>0700-1900</b>	<b>8 Mile Camp</b>
<b>PROC J&amp;R LOGGING</b>		<b>9/30</b>	<b>JIMENEZ</b>	1	<b>E-50150</b>	<b>0700-1900</b>	<b>8 Mile Camp</b>
<b>SKD SIERRA FOREST 4</b>		<b>9/30</b>	<b>CAMPBELL</b>	1	<b>E-707</b>	<b>0700-1900</b>	<b>8 Mile Camp</b>
<b>SKD J&amp;R LOGGING</b>		<b>10/1</b>	<b>JIMENEZ</b>	1	<b>E-712</b>	<b>0700-1900</b>	<b>8 Mile Camp</b>

**6. Work Assignments:**  
 TASK: Perform priority suppression repair work within Branch 1. Repair Wrights Lake Road and Hazard Tree Removal along Mormon Emigrant Trail. Coordinate closely with CALFIRE AEU and USFS REAFs to ensure work is efficiently managed  
 PURPOSE: Minimize any near-term environmental resource impacts as a result of fire suppression efforts  
 END STATE: Watershed and areas adjacent to values at risk are protected using the approved standard

**7. Special Instructions:**  
 Backhaul trash, excess supplies and provide a location for accountable property  
 Identify and coordinate the removal of hazard trees  
 Resources denoted with \* is identified as I/A resources within the TFR  
 \*\*\*Resources need to report to 8 Mile Camp (4260 8 Mile Rd, Camino, CA 95709) for briefing and end of shift\*\*\*

8. Communications							
Name	Ch	Function	Rx Freq	Rx Tone	Tx Freq	Tx Tone	Notes
SEE ICS 205 COMM PLAN							

<b>9. Prepared by: Name:</b>	Mike Yeun, Chris Adams, Derek Acosta(T)	RESL	Signature:
<b>ICS 204</b>	Date/Time: 9/18/2021 2200	Personnel Count: 15	

# ASSIGNMENT LIST (ICS 204 WF)

CONTROLLED UNCLASSIFIED  
INFORMATION/BASIC

<b>1. Incident Name:</b> <p style="text-align: center; font-size: 1.2em;">CALDOR</p>		<b>2. Operational Period:</b> Date From: 09/19/21    Date To: 09/20/21 Time From: 0700    Time To: 0700				<b>3. Branch</b> <b>Division</b> <p style="text-align: center; font-size: 1.2em;">I    Suppression Repair</p>		
<b>4. Operations Personnel:</b> Operations Section Chief: <b>Jim Snow, Mike Page(T)</b> Branch Director: <b>Robert Szczepanek</b> Division/Group Supervisor: <b>Ryan Waggoner</b>		Night Ops: <b>Mike Koontz, Luis Gomez(T)</b> Deputy Ops: <b>Al Ward, Chris StPierre(T)</b> Air Attack:				Page 2 of 3		
<b>5. Resources Assigned:</b>		** Resources Below in Bold are 12 Hour **						
Resource Identifier	ALS	LWD	Leader	Personnel	Request #	Hours	Reporting Location	
<b>GROUP #4 GRINDING</b>								
<b>GRND ARBORWORKS</b>		<b>9/30</b>	<b>MEALIN</b>	<b>1</b>	<b>E-731</b>	<b>0700-1900</b>	<b>8 Mile Camp</b>	
<b>LOAD BAMFORD</b>		<b>9/30</b>	<b>MONTGOMERY</b>	<b>1</b>	<b>E-720</b>	<b>0700-1900</b>	<b>8 Mile Camp</b>	
<b>LOAD SIERRA FOREST</b>		<b>9/30</b>	<b>LANGLEY</b>	<b>1</b>	<b>E-50159</b>	<b>0700-1900</b>	<b>8 Mile Camp</b>	
<b>ENG3 NM MARTINEZ</b>				<b>3</b>	<b>E-21276</b>	<b>0700-1900</b>	<b>8 Mile Camp</b>	
<b>DOZ2 ENF 3 *</b>		<b>9/21</b>	<b>STARK</b>	<b>3</b>	<b>E-200</b>	<b>0700-1900</b>	<b>8 Mile Camp</b>	
<b>DOZ2 HERTZIG</b>		<b>9/27</b>	<b>HERTZIG</b>	<b>1</b>	<b>E-101</b>	<b>0700-1900</b>	<b>8 Mile Camp</b>	
<b>DOZ3 TOM'S EARTHMOVING</b>		<b>9/30</b>	<b>FUNES</b>	<b>2</b>	<b>E-50239</b>	<b>0700-1900</b>	<b>8 Mile Camp</b>	
<b>EXCA WEST WOOD</b>		<b>9/26</b>	<b>WEST</b>	<b>2</b>	<b>E-232</b>	<b>0700-1900</b>	<b>8 Mile Camp</b>	
<b>EXCA COTTONWOOD</b>		<b>9/29</b>	<b>HARTLEY</b>	<b>2</b>	<b>E-687</b>	<b>0700-1900</b>	<b>8 Mile Camp</b>	
<b>EXCA ENF 7462 *</b>		<b>9/26</b>	<b>LANGENDERFER</b>	<b>1</b>	<b>E-728</b>	<b>0700-1900</b>	<b>8 Mile Camp</b>	
<b>EXCA VENTANA RANCH</b>		<b>9/25</b>	<b>LOVERTON</b>	<b>1</b>	<b>E-689</b>	<b>0700-1900</b>	<b>8 Mile Camp</b>	
<b>EXCA EMERSON</b>		<b>9/25</b>	<b>SHERRILL</b>	<b>1</b>	<b>E-50154</b>	<b>0700-1900</b>	<b>8 Mile Camp</b>	
<b>EXCA2 LONESTAR ENT</b>		<b>9/30</b>	<b>MILLER</b>	<b>2</b>	<b>E-50231</b>	<b>0700-1900</b>	<b>8 Mile Camp</b>	
<b>EXCA INGRAM</b>		<b>9/24</b>	<b>WHEELER</b>	<b>1</b>	<b>E-50155</b>	<b>0700-1900</b>	<b>8 Mile Camp</b>	
<b>EXCA HEAVYHAUL</b>		<b>9/29</b>	<b>LESLIE</b>	<b>2</b>	<b>E-50226</b>	<b>0700-1900</b>	<b>8 Mile Camp</b>	
<b>MAST CLAYTON</b>		<b>9/30</b>	<b>TITTLE</b>	<b>2</b>	<b>E-50228</b>	<b>0700-1900</b>	<b>8 Mile Camp</b>	
<b>MAST PVT (E-58)</b>			<b>FINDLETON</b>	<b>1</b>	<b>E-58</b>	<b>0700-1900</b>	<b>8 Mile Camp</b>	
<b>MAST BRUCE YOUNG</b>			<b>YOUNG</b>	<b>1</b>	<b>E-241</b>	<b>0700-1900</b>	<b>8 Mile Camp</b>	
<b>6. Work Assignments:</b> TASK: Perform priority suppression repair work within Branch 1. Repair Wrights Lake Road and Hazard Tree Removal along Mormon Emigrant Trail. Coordinate closely with CALFIRE AEU and USFS REAFs to ensure work is efficiently managed PURPOSE: Minimize any near-term environmental resource impacts as a result of fire suppression efforts END STATE: Watershed and areas adjacent to values at risk are protected using the approved standard								
<b>7. Special Instructions:</b> Backhaul trash, excess supplies and provide a location for accountable property Identify and coordinate the removal of hazard trees Resources denoted with * is identified as I/A resources within the TFR ***Resources need to report to 8 Mile Camp (4260 8 Mile Rd, Camino, CA 95709) for briefing and end of shift***								
<b>8. Communications</b>								
Name	Ch	Function	Rx Freq	Rx Tone	Tx Freq	Tx Tone	Notes	
SEE ICS 205 COMM PLAN								
<b>9. Prepared by: Name:</b>		Mike Yeun, Chris Adams, Derek Acosta(T)			RESL			Signature:
<b>ICS 204</b>	Date/Time: 9/18/2021 2200			Personnel Count: 26				

# ASSIGNMENT LIST (ICS 204 WF)

CONTROLLED UNCLASSIFIED  
INFORMATION/BASIC

<b>1. Incident Name:</b> <p style="text-align: center;"><b>CALDOR</b></p>	<b>2. Operational Period:</b> Date From: 09/19/21    Date To: 09/20/21 Time From: 0700    Time To: 0700	<b>3. Branch</b> <b>Division</b> <p style="text-align: center;"><b>I    Suppression Repair</b></p>
--	---	---

Page 3 of 3

<b>4. Operations Personnel:</b> Operations Section Chief: <b>Jim Snow, Mike Page(T)</b> Branch Director: <b>Robert Szczepanek</b> Division/Group Supervisor: <b>Ryan Waggoner</b>		Night Ops: <b>Mike Koontz, Luis Gomez(T)</b> Deputy Ops: <b>Al Ward, Chris StPierre(T)</b> Air Attack:
--	--	--

<b>5. Resources Assigned:</b>		** Resources Below in Bold are 12 Hour **					
Resource Identifier	ALS	LWD	Leader	Personnel	Request #	Hours	Reporting Location
CHIP WOOD CHUCK		9/25	TINGLER	1	E-50174	0700-1900	8 Mile Camp
SKD T1 FORKNER		9/25	DIAL	2	E-50152	0700-1900	8 Mile Camp
SKD T1 CECIL LOGGING		9/29	HUNTER	1	E-50153	0700-1900	8 Mile Camp
LOG TRK VOLCANO CREEK			ELLIOT	1	E-50156	0700-1900	8 Mile Camp
LOG TRK ARBORWORKS		9/27	YOUNGREN	1	E-50157	0700-1900	8 Mile Camp
LOG HEAVYHAUL		9/30	LESLIE	1	E-738	0700-1900	8 Mile Camp
LOG RIDGE LOGGING		9/30	SLACK	1	E-737	0700-1900	8 Mile Camp
TFLD LOWELL		9/29	LOWELL	1	O-568	0700-1900	8 Mile Camp
TFLD(T) WARD			WARD	1	O-545	0700-1900	8 Mile Camp
TFLD(T) GRAY		9/30	GRAY	1	O-50160	0700-1900	8 Mile Camp
HEQB(T) APACHITO			APACHITO	1	O-550	0700-1900	8 Mile Camp
FALM SKYLAKE		9/29	HAGINS	2	O-20480	0700-1900	8 Mile Camp
REAF SLOAN			SLOAN	1	O-535	0700-1900	8 Mile Camp
REAF(T) HENDERSON			HENDERSON	1		0700-1900	8 Mile Camp
ARCH COOPER			COOPER	1	O-180	0700-1900	8 Mile Camp
ARCH(T) MARTI			MARTI	1	O-572	0700-1900	8 Mile Camp

**6. Work Assignments:**  
**TASK:** Perform priority suppression repair work within Branch 1. Repair Wrights Lake Road and Hazard Tree Removal along Mormon Emigrant Trail. Coordinate closely with CALFIRE AEU and USFS REAFs to ensure work is efficiently managed  
**PURPOSE:** Minimize any near-term environmental resource impacts as a result of fire suppression efforts  
**END STATE:** Watershed and areas adjacent to values at risk are protected using the approved standard

**7. Special Instructions:**  
 Backhaul trash, excess supplies and provide a location for accountable property  
 Identify and coordinate the removal of hazard trees  
 Resources denoted with \* is identified as I/A resources within the TFR  
 \*\*\*Resources need to report to 8 Mile Camp (4260 8 Mile Rd, Camino, CA 95709) for briefing and end of shift\*\*\*

<b>8. Communications</b>							
Name	Ch	Function	Rx Freq	Rx Tone	Tx Freq	Tx Tone	Notes
SEE ICS 205 COMM PLAN							

<b>9. Prepared by: Name:</b>	Mike Yeun, Chris Adams, Derek Acosta(T)	RESL	Signature:
<b>ICS 204</b>	Date/Time: 9/18/2021 2200	Personnel Count: 18	

# ASSIGNMENT LIST (ICS 204 WF)

CONTROLLED UNCLASSIFIED  
INFORMATION/BASIC

<b>1. Incident Name:</b> <p style="text-align: center;"><b>CALDOR</b></p>	<b>2. Operational Period:</b> Date From: 09/19/21    Date To: 09/20/21 Time From: 0700            Time To: 0700	<b>3. Branch</b> <b>Division</b> <p style="text-align: center;"><b>III</b>                              <b>I / M</b></p>
--	---	---

<b>4. Operations Personnel:</b>		Page 1 of 2
Operations Section Chief: <b>Jim Snow, Mike Page(T)</b> Branch Director: <b>John Owings</b> Division/Group Supervisor: <b>Jason Flores</b>	Night Ops: <b>Mike Koontz, Luis Gomez(T)</b> Deputy Ops: <b>Al Ward, Chris StPierre(T)</b> Air Attack:	


5. Resources Assigned:	** Resources Below in Bold are 12 Hour **							
Resource Identifier	ALS	LWD	Leader	Personnel	Request #	Hours	Reporting Location	
<b>WFM BLACK HILLS</b>		<b>9/24</b>	<b>DUEKEER</b>	10	<b>E-50208</b>	<b>0700-1900</b>	<b>HEAVENLY ICP</b>	
<b>SMOD NMCIF ACOMA 2</b>		<b>9/23</b>	<b>CARABAJAL</b>	17	<b>O-50194</b>	<b>0700-1900</b>	<b>HEAVENLY ICP</b>	
<b>T/F OES 6411T</b>		<b>9/21</b>	<b>HARRIS</b>	20	<b>E-20239</b>	<b>0700-1900</b>	<b>HEAVENLY ICP</b>	
<b>ENG3 CCD 3363</b>		<b>9/30</b>	<b>WILLIAMS</b>	5	<b>E-50196</b>	<b>0700-1900</b>	<b>HEAVENLY ICP</b>	
<b>ENG3 NTF 54</b>		<b>9/19</b>	<b>NELSON</b>	4	<b>E-20763</b>	<b>0700-1900</b>	<b>HEAVENLY ICP</b>	
<b>ENG3 HART 291</b>		<b>9/20</b>	<b>GATES</b>	3	<b>E-291</b>	<b>0700-1900</b>	<b>HEAVENLY ICP</b>	
<b>ENG3 DS FIRE SUPPRESSION</b>		<b>9/27</b>	<b>DAGNELL</b>	3	<b>E-50161</b>	<b>0700-1900</b>	<b>HEAVENLY ICP</b>	
<b>ENG3 NWS 1667</b>		<b>9/28</b>	<b>ARNDT</b>	6	<b>E-50177</b>	<b>0700-1900</b>	<b>HEAVENLY ICP</b>	
<b>ENG6 TX-TXF E641</b>		<b>9/27</b>	<b>UAL</b>	4	<b>E-466</b>	<b>0700-1900</b>	<b>HEAVENLY ICP</b>	
<b>FAL1 CTL BLAIR</b>		<b>9/29</b>	<b>BLAIR</b>	1	<b>O-50346</b>	<b>0700-1900</b>	<b>HEAVENLY ICP</b>	
<b>FAL1 CTL ELDERD</b>		<b>9/29</b>	<b>ELDERD</b>	1	<b>O-50347</b>	<b>0700-1900</b>	<b>HEAVENLY ICP</b>	
<b>FAL1 CTL WHITE</b>		<b>9/29</b>	<b>WHITE</b>	1	<b>O-50348</b>	<b>0700-1900</b>	<b>HEAVENLY ICP</b>	
<b>FAL1 CTL GREEN</b>		<b>9/29</b>	<b>GREEN</b>	1	<b>O-50349</b>	<b>0700-1900</b>	<b>HEAVENLY ICP</b>	
<b>FAL1 CTL HOLLAND</b>		<b>9/29</b>	<b>HOLLAND</b>	1	<b>O-50350</b>	<b>0700-1900</b>	<b>HEAVENLY ICP</b>	
<b>SKD2 CTL FOREST MGMT</b>		<b>9/29</b>	<b>KREGOSKI</b>	6	<b>E-50188</b>	<b>0700-1900</b>	<b>HEAVENLY ICP</b>	
<b>LOAD CTL FOREST MGMT 1</b>		<b>9/29</b>	<b>KREGOSKI</b>	6	<b>E-50189</b>	<b>0700-1900</b>	<b>HEAVENLY ICP</b>	
<b>LOAD CTL FOREST MGMT 2</b>		<b>9/29</b>	<b>KREGOSKI</b>	6	<b>E-50187</b>	<b>0700-1900</b>	<b>HEAVENLY ICP</b>	

**6. Work Assignments:**  
 TASK: Secure existing line and continue to build fireline direct from Echo Lakes to H-3. Mop up to the extent necessary on the fires edge and provide for tactical patrol to the communities affected along Hwy 50  
 PURPOSE: Minimize any fire progression and ensure the safety of those working north of Hwy 50  
 END STATE: Fires edge in the division is controlled and escape is improbable

**7. Special Instructions:**  
 Backhaul trash, excess supplies and provide a location for accountable property  
 Identify and coordinate the removal of hazard trees  
 Resources denoted with \* is identified as I/A resources within the TFR  
 Medic 60, ALS Ambulance for Highway 50 patrol  
 \*\*\*Resources need to report to Heavenly ICP (3860 Saddle Rd., South Lake Tahoe, CA 96150) for briefing and end of shift\*\*\*

**8. Communications**

Name	Ch	Function	Rx Freq	Rx Tone	Tx Freq	Tx Tone	Notes
SEE ICS 205 COMM PLAN							

**9. Prepared by: Name:** Mike Yeun, Chris Adams, Derek Acosta(T)                      RESL  
 Signature: 

**ICS 204**                      Date/Time: 9/18/2021 2200                      Personnel Count: 95



# ASSIGNMENT LIST (ICS 204 WF)

CONTROLLED UNCLASSIFIED  
INFORMATION/BASIC

<b>1. Incident Name:</b> <p style="text-align: center; font-weight: bold;">CALDOR</p>	<b>2. Operational Period:</b> Date From: 09/19/21    Date To: 09/20/21 Time From: 0700            Time To: 0700	<b>3. Branch</b> <b>Division</b> <p style="text-align: center; font-size: 1.5em; font-weight: bold;">III                      O / P</p>
--	---	--

<b>4. Operations Personnel:</b>		Page 1 of 1
Operations Section Chief: <b>Jim Snow, Mike Page(T)</b> Branch Director: <b>John Owings</b> Division/Group Supervisor: <b>Rob Noxon</b>	Night Ops: <b>Mike Koontz, Luis Gomez(T)</b> Deputy Ops: <b>Al Ward, Chris StPierre(T)</b> Air Attack:	

5. Resources Assigned:		** Resources Below In Bold are 12 Hour **					
Resource Identifier	ALS	LWD	Leader	Personnel	Request #	Hours	Reporting Location
HC2IA SLIDE MOUNTAIN		9/26	<b>HIGGINS</b>	21	<b>C-50049</b>	0700-1900	HEAVENLY ICP
HC2 BIRRUETA REFORESTATION		10/1	<b>BIRREUTA</b>	20	<b>C-50060</b>	0700-1900	HEAVENLY ICP
T/F BASIN *		9/25	<b>KING</b>	10	<b>E-50090</b>	0700-1900	HEAVENLY ICP
ENG3 TMU 341 *		9/29	<b>KING</b>	3	<b>E-50090</b>	0700-1900	HEAVENLY ICP
ENG3 TMU 342 *		9/25	<b>DE LEON</b>	5	<b>E-50091</b>	0700-1900	HEAVENLY ICP
WTT2 WT4 *		9/29	<b>VOSBURG</b>	2	<b>E-50092</b>	0700-1900	HEAVENLY ICP
ENG3 MT-NWS 1262		9/30	<b>WARD</b>	3	<b>E-50203</b>	0700-1900	HEAVENLY ICP
ENG3 J3 CONTRACTING		9/30	<b>WALLACE</b>	3	<b>E-50215</b>	0700-1900	HEAVENLY ICP
ENG4 J3 CONSTRUCTION		9/25	<b>STEENHUIZEN</b>	3	<b>E-21269</b>	0700-1900	HEAVENLY ICP
ENG5 YABOY		9/28	<b>BAWER</b>	3	<b>E-50178</b>	0700-1900	HEAVENLY ICP
ENG6 E2628		9/30	<b>SPARGO</b>	2	<b>E-50212</b>	0700-1900	HEAVENLY ICP
FMOD NORTH ZONE FALLERS		10/1	<b>BRANSON</b>	2	<b>O-50341</b>	0700-1900	HEAVENLY ICP
FMOD GREEN JR		10/1	<b>GREEN</b>	2	<b>O-50343</b>	0700-1900	HEAVENLY ICP
SOF2 MOYER		9/30	<b>MOYER</b>	1	<b>O-50306</b>	0700-1900	HEAVENLY ICP
EMPF POTTS	X	9/24	<b>POTTS</b>	1	<b>O-20840</b>	0700-1900	HEAVENLY ICP
EMPF SCHELINE	X	9/23	<b>SCHELINE</b>	1	<b>O-20841</b>	0700-1900	HEAVENLY ICP
CARE AMBULANCE 527		9/19	<b>PRICE/TRASK</b>	2	<b>E-20628</b>	0700-1900	HEAVENLY ICP

**6. Work Assignments:**  
 TASK: Provide for a tactical patrol and respond to any calls for service.  
 Mop up to the extent necessary on the fires edge and within the perimeter where infrastructure and values at risk are present.  
 PUROSE: Minimize any fire progression, keeping the fire within its current footprint  
 END STATE: Fires edge in the division is controlled and escape is improbable

**7. Special Instructions:**  
 Backhaul trash, excess supplies and provide a location for accountable property  
 Identify and coordinate the removal of hazard trees  
 Resources denoted with \* is identified as I/A resources within the TFR  
 \*\*\*Resources need to report to Heavenly ICP (3860 Saddle Rd., South Lake Tahoe, CA 96150) for briefing and end of shift\*\*\*

**8. Communications**

Name	Ch	Function	Rx Freq	Rx Tone	Tx Freq	Tx Tone	Notes
SEE ICS 205 COMM PLAN							

<b>9. Prepared by: Name:</b>	Mike Yeun, Chris Adams, Derek Acosta(T)	RESL	Signature:
<b>ICS 204</b>	Date/Time: 9/18/2021 2200	Personnel Count: 84	



# ASSIGNMENT LIST (ICS 204 WF)

CONTROLLED UNCLASSIFIED  
INFORMATION/BASIC

<b>1. Incident Name:</b> <p style="text-align: center;"><b>CALDOR</b></p>	<b>2. Operational Period:</b> Date From: 09/19/21    Date To: 09/20/21 Time From: 0700            Time To: 0700	<b>3. Branch</b> <b>Division</b> <p style="text-align: center;"><b>III</b>                                      <b>Q</b></p>
--	---	---

<b>4. Operations Personnel:</b> Operations Section Chief: <b>Jim Snow, Mike Page(T)</b> Branch Director: <b>John Owings</b> Division/Group Supervisor: <b>Kristian Litz, Andy Wordin(T)</b>	Night Ops: <b>Mike Koontz, Luis Gomez(T)</b> Deputy Ops <b>Al Ward, Chris StPierre(T)</b> Air Attack:
--	---


5. Resources Assigned:	** Resources Below In Bold are 12 Hour **							
Resource Identifier	ALS	LWD	Leader	Personnel	Request #	Hours	Reporting Location	
HC1 TALLAC IHC		9/22	<b>BETTY</b>	20	<b>C-50001</b>	0700-1900	HEAVENLY ICP	
HC1 ARAVAIPA IHC		9/19	<b>SMITH</b>	20	<b>C-50009</b>	0700-1900	HEAVENLY ICP	
HC1 SIERRA IHC		9/27	<b>ROBY</b>	19	<b>C-50014</b>	0700-1900	HEAVENLY ICP	
HC1 EL DORADO IHC *		9/21	<b>STRAHN</b>	20	<b>C-50020</b>	0700-1900	HEAVENLY ICP	
HC2IA TANANA CHIEFS		9/27	<b>SIMPLE</b>	18	<b>C-104</b>	0700-1900	HEAVENLY ICP	
HC2IA WHITE MOUNTAIN		9/26	<b>STANSEL</b>	21	<b>C-107</b>	0700-1900	HEAVENLY ICP	
HC2IA SAFFORD		9/22	<b>ROMERO</b>	19	<b>C-50016</b>	0700-1900	HEAVENLY ICP	
HC2IA ZEPHYR		9/26	<b>FOGARTY</b>	20	<b>C-50050</b>	0700-1900	HEAVENLY ICP	
HC2IA TD CREW 21		9/28	<b>ZINK</b>	14	<b>C-50053</b>	0700-1900	HEAVENLY ICP	
HC2IA IRON MOUNTAIN 31 *		9/30	<b>MCKURTIS</b>	18	<b>C-50062</b>	0700-1900	HEAVENLY ICP	
HC2 RIFLE PEAK		9/28	<b>ELLIS</b>	21	<b>C-50054</b>	0700-1900	HEAVENLY ICP	
HC2 HVP 51		10/1	<b>RITZMAN</b>	18	<b>C-50058</b>	0700-1900	HEAVENLY ICP	
ENG3 AZ-CENTRAL 66		10/1	<b>KONTZ</b>	4	<b>E-50269</b>	0700-1900	HEAVENLY ICP	
ENG3 AZ-SUM		10/2	<b>GLAZENER</b>	3	<b>E-50270</b>	0700-1900	HEAVENLY ICP	
ENG4 EKD		9/22	<b>KRENKA</b>	4	<b>E-50213</b>	0700-1900	HEAVENLY ICP	
ENG6 GTP 601		9/19	<b>KULLA</b>	3	<b>E-50133</b>	0700-1900	HEAVENLY ICP	
ENG6 NBF 681		10/2	<b>JONES</b>	3	<b>E-50222</b>	0700-1900	HEAVENLY ICP	
ENG6 ALPINE WILDFIRE		10/1	<b>LARSON</b>	3	<b>E-21103</b>	0700-1900	HEAVENLY ICP	
ENG6 PEANUT PIE		10/2	<b>GOOD GUN</b>	3	<b>E-50219</b>	0700-1900	HEAVENLY ICP	

**6. Work Assignments:**  
 TASK: Secure existing line and continue to suppress any fire near Cody Meadow. Mop up to the extent necessary, utilizing natural barriers and secure any heat sources between DP-65 and Scout Peak  
 PURPOSE: Minimize any fire progression and ensure the safety of those working within the division  
 END STATE: Fires edge in the division is controlled and escape is improbable

**7. Special Instructions:**  
 Backhaul trash, excess supplies and provide a location for accountable property  
 Identify and coordinate the removal of hazard trees  
 Resources denoted with \* is identified as I/A resources within the TFR  
 \*\*\*Resources need to report to Heavenly ICP (3860 Saddle Rd., South Lake Tahoe, CA 96150) for briefing and end of shift\*\*\*

**8. Communications**

Name	Ch	Function	Rx Freq	Rx Tone	Tx Freq	Tx Tone	Notes
SEE ICS 205 COMM PLAN							

**9. Prepared by: Name:** Mike Yeun, Chris Adams, Derek Acosta(T)                      RESL  
 Signature: 

**ICS 204**                      Date/Time: 9/18/2021 2200                      Personnel Count: 248

# ASSIGNMENT LIST (ICS 204 WF)

CONTROLLED UNCLASSIFIED  
INFORMATION/BASIC

<b>1. Incident Name:</b> <p style="text-align: center;"><b>CALDOR</b></p>	<b>2. Operational Period:</b> Date From: 09/19/21    Date To: 09/20/21 Time From: 0700            Time To: 0700	<b>3. Branch</b> <b>Division</b> <p style="text-align: center;"><b>III</b>                                      <b>Q</b></p> <p style="text-align: center;">Page 2 of 2                      Quebec</p>
--	---	--

<b>4. Operations Personnel:</b> Operations Section Chief: <b>Jim Snow, Mike Page(T)</b> Branch Director: <b>John Owings</b> Division/Group Supervisor: <b>Kristian Litz, Andy WordIn(T)</b>		Night Ops: <b>Mike Koontz, Luis Gomez(T)</b> Deputy Ops <b>Al Ward, Chris StPierre(T)</b> Air Attack:
--	--	---


5. Resources Assigned:	** Resources Below In Bold are 12 Hour **					Hours	Reporting Location
Resource Identifier	ALS	LWD	Leader	Personnel	Request #		
WTT2 AC WATER		10/19	<b>ROSE</b>	1	<b>E-20017</b>	0700-1900	HEAVENLY ICP
WTT2 CGS INC		10/19	<b>CORELY</b>	1	<b>E-20280</b>	0700-1900	HEAVENLY ICP
WTS2 OXFORD		9/25	<b>CLARK</b>	1	<b>E-257</b>	0700-1900	HEAVENLY ICP
SKD BULL CREEK		9/21	<b>CAHOON</b>	2	<b>E-65</b>	0700-1900	HEAVENLY ICP
TFLD MACARTHUR		9/24	<b>MACARTHUR</b>	1	<b>O-224</b>	0700-1900	HEAVENLY ICP
TFLD(T) MCARTHUR		9/21	<b>MCARTHUR</b>	1	<b>O-50091</b>	0700-1900	HEAVENLY ICP
FMOD UNDERDOG TIMBER 1		9/23	<b>BROWN</b>	2	<b>O-232</b>	0700-1900	HEAVENLY ICP
FMOD UNDERDOG TIMBER 2		9/20	<b>POOR</b>	2	<b>O-20140</b>	0700-1900	HEAVENLY ICP
FMOD A&F ENTERPRISES		9/27	<b>BAFFORD</b>	2	<b>O-234</b>	0700-1900	HEAVENLY ICP
SOFR JOHNSON		9/22	<b>JOHNSON</b>	1	<b>O-50210</b>	0700-1900	HEAVENLY ICP
EMPF BUBEN	X	9/27	<b>BUBEN</b>	1	<b>O-50170</b>	0700-1900	HEAVENLY ICP
EMPF GHISLETTA	X	9/30	<b>GHISLETTA</b>	1	<b>O-50313</b>	0700-1900	HEAVENLY ICP
EMPF VASQUEZ	X		<b>VASQUEZ</b>	1	<b>O-50379</b>	0700-1900	HEAVENLY ICP
EMPF BEVERIDGE	X	9/21	<b>BEVERIDGE</b>	1	<b>O-20372</b>	0700-1900	HEAVENLY ICP

**6. Work Assignments:**  
 TASK: Secure existing line and continue to suppress any fire near Cody Meadow. Mop up to the extent necessary, utilizing natural barriers and secure any heat sources between DP-65 and Scout Peak  
 PURPOSE: Minimize any fire progression and ensure the safety of those working within the division  
 END STATE: Fires edge in the division is controlled and escape is improbable

**7. Special Instructions:**  
 Backhaul trash, excess supplies and provide a location for accountable property  
 Identify and coordinate the removal of hazard trees  
 Resources denoted with \* is identified as I/A resources within the TFR  
 \*\*\*Resources need to report to Heavenly ICP (3860 Saddle Rd., South Lake Tahoe, CA 96150) for briefing and end of shift\*\*\*

**8. Communications**

Name	Ch	Function	Rx Freq	Rx Tone	Tx Freq	Tx Tone	Notes
SEE ICS 205 COMM PLAN							

**9. Prepared by: Name:** Mike Yeun, Chris Adams, Derek Acosta(T)                      RESL  
 Signature: 

ICS 204                      Date/Time: 9/18/2021 2200                      Personnel Count: 18



# ASSIGNMENT LIST (ICS 204 WF)

CONTROLLED UNCLASSIFIED  
INFORMATION/BASIC

<b>1. Incident Name:</b> <p style="text-align: center;"><b>CALDOR</b></p>	<b>2. Operational Period:</b> Date From: 09/19/21    Date To: 09/20/21 Time From: 0700    Time To: 0700	<b>3. Branch</b> <b>Division</b> <p style="text-align: center;"><b>III</b>    <b>R</b></p>
--	---	---

<b>4. Operations Personnel:</b>		Page 1 of 1 <b>Romeo</b>
Operations Section Chief: <b>Jim Snow, Mike Page(T)</b> Branch Director: <b>John Owings</b> Division/Group Supervisor: <b>Aaron Schumacher, James Searcy(T)</b>	Night Ops: <b>Mike Koontz, Luis Gomez(T)</b> Deputy Ops: <b>Al Ward, Chris StPierre(T)</b> Air Attack:	

<b>5. Resources Assigned:</b>		** Resources Below in Bold are 12 Hour **					
Resource Identifier	ALS	LWD	Leader	Personnel	Request #	Hours	Reporting Location
ENG3 CCD 3324		10/1	<b>VANDERSLICE</b>	4	<b>E-50195</b>	0700-1900	HEAVENLY ICP
ENG4 COOPER CONTRACTING		10/1	<b>BURWELL</b>	3	<b>E-50223</b>	0700-1900	HEAVENLY ICP
ENG 4 BOSKET'S PLUMBING		9/30	<b>BAILEY</b>	3	<b>E-50202</b>	0700-1900	HEAVENLY ICP
ENG6 INDIANOLA		9/29	<b>ALLSOP</b>	3	<b>E-50198</b>	0700-1900	HEAVENLY ICP
ENG6 N4S		9/29	<b>NAEGELE</b>	2	<b>E-50265</b>	0700-1900	HEAVENLY ICP
ENG6 BKF 664		9/29	<b>WOIFF</b>	3	<b>E-50201</b>	0700-1900	HEAVENLY ICP
ENG6 OREGON WOODS INC		10/1	<b>PARKINS</b>	3	<b>E-50210</b>	0700-1900	HEAVENLY ICP
ENG6 ALLEN FIRE LLC		10/1	<b>ALLEN</b>	3	<b>E-50218</b>	0700-1900	HEAVENLY ICP
WTS2 IDAHO HEAVY EQUIP		9/27	<b>HOLLIDAY</b>	2	<b>E-387</b>	0700-1900	HEAVENLY ICP
EXCA BALDWIN DIESEL		10/2	<b>MILLER</b>	2	<b>E-50232</b>	0700-1900	HEAVENLY ICP
EXCA SERMON		10/2	<b>SERMON</b>	2	<b>E-50260</b>	0700-1900	HEAVENLY ICP
DO22 BUFFINGTON		10/17	<b>BENSON</b>	2	<b>E-20022</b>	0700-1900	HEAVENLY ICP
CHIP CTS VENTURES		9/29	<b>NIEVES</b>	2	<b>E-20611</b>	0700-1900	HEAVENLY ICP
SOFR TADLOCK		9/29	<b>TADLOCK</b>	1	<b>O-50169</b>	0700-1900	HEAVENLY ICP
EMPF ESTRADA	X	9/23	<b>ESTRADA</b>	1	<b>O-50220</b>	0700-1900	HEAVENLY ICP
EMTF PRADO		9/24	<b>PRADO</b>	1	<b>O-50111</b>	0700-1900	HEAVENLY ICP

**6. Work Assignments:**  
 TASK: Secure existing line and continue to build fireline direct from DP-73 to Hwy 88. Mop up to the extent necessary, utilizing natural barriers and secure any heat sources West to Mormon Emigrant Trail.  
 PURPOSE: Minimize any fire progression and ensure the safety of those working near Hwy 88  
 END STATE: Fires edge in the division in controlled and escape is improbable

**7. Special Instructions:**  
 Backhaul trash, excess supplies and provide a location for accountable property  
 Identify and coordinate the removal of hazard trees  
 Resources denoted with \* is identified as I/A resources within the TFR  
 \*\*\*Resources need to report to Heavenly ICP (3860 Saddle Rd., South Lake Tahoe, CA 96150) for briefing and end of shift\*\*\*

**8. Communications**

Name	Ch	Function	Rx Freq	Rx Tone	Tx Freq	Tx Tone	Notes
SEE ICS 205 COMM PLAN							

**9. Prepared by: Name:** Mike Yeun, Chris Adams, Derek Acosta(T)    RESL    Signature: 

ICS 204    Date/Time: 9/18/2021 2200    Personnel Count: 37

# ASSIGNMENT LIST (ICS 204 WF)

CONTROLLED UNCLASSIFIED  
INFORMATION/BASIC

<b>1. Incident Name:</b> <p style="text-align: center;"><b>CALDOR</b></p>	<b>2. Operational Period:</b> Date From: 09/19/21    Date To: 09/20/21 Time From: 0700            Time To: 0700	<b>3. Branch</b> <b>Division</b> <p style="text-align: center;"><b>III                      Suppression                                  Repair</b></p>
--	---	--

Page 1 of 2

<b>4. Operations Personnel:</b> Operations Section Chief: <b>Jim Snow, Mike Page(T)</b> Branch Director: <b>John Owings</b> Division/Group Supervisor: <b>Rob Bertolina</b>	Night Ops: <b>Mike Koontz, Luis Gomez(T)</b> Deputy Ops <b>Al Ward, Chris StPierre(T)</b> Air Attack:
--	---


<b>5. Resources Assigned:</b>		<b>** Resources Below in Bold are 12 Hour **</b>					
Resource Identifier	ALS	LWD	Leader	Personnel	Request #	Hours	Reporting Location
HC2 R&R CONTRACTING		<b>9/25</b>	<b>IBARRA</b>	20	<b>C-50041</b>	<b>0700-1900</b>	<b>HEAVENLY ICP</b>
HC2 GRIZZLY FIREFIGHTERS		<b>9/25</b>	<b>FONSECA</b>	20	<b>C-50042</b>	<b>0700-1900</b>	<b>HEAVENLY ICP</b>
HC2 MOUNTAINEER MT2		<b>9/26</b>	<b>WENCESLAO</b>	20	<b>C-50043</b>	<b>0700-1900</b>	<b>HEAVENLY ICP</b>
HC2 MS REGULAR 1		<b>9/27</b>	<b>GLADNEY</b>	22	<b>C-50047</b>	<b>0700-1900</b>	<b>HEAVENLY ICP</b>
HC2 COOPER CONTRACTING		<b>9/26</b>	<b>GRIMALDO</b>	20	<b>C-50048</b>	<b>0700-1900</b>	<b>HEAVENLY ICP</b>
HC2 PACIFIC COAST		<b>10/2</b>	<b>CISNEROS</b>	20	<b>C-50003</b>	<b>0700-1900</b>	<b>HEAVENLY ICP</b>
WTT2 QUALITY CONST		<b>10/1</b>	<b>INDIHOR</b>	1	<b>E-20008</b>	<b>0700-1900</b>	<b>HEAVENLY ICP</b>
DOZ2 HUCKABY CONSTRUCTION		<b>9/30</b>	<b>STEINES</b>	2	<b>E-50236</b>	<b>0700-1900</b>	<b>HEAVENLY ICP</b>
DOZ2 2C LAND AND TIMBER		<b>9/30</b>	<b>CARRIOOO</b>	2	<b>E-50234</b>	<b>0700-1900</b>	<b>HEAVENLY ICP</b>
DOZ3 DEUCES TRUCKING		<b>9/30</b>	<b>JOHNSON</b>	3	<b>E-50238</b>	<b>0700-1900</b>	<b>HEAVENLY ICP</b>
EXCA JW MORRISON		<b>9/30</b>	<b>DALE</b>	1	<b>E-50229</b>	<b>0700-1900</b>	<b>HEAVENLY ICP</b>
EXCA STOX 72		<b>9/27</b>	<b>LICATA</b>	2	<b>E-686</b>	<b>0700-1900</b>	<b>HEAVENLY ICP</b>
EXCA MC EXCAVATION		<b>9/23</b>	<b>STANHUPE</b>	2	<b>E-235</b>	<b>0700-1900</b>	<b>HEAVENLY ICP</b>
EXCA DAVIS CORP		<b>9/23</b>	<b>PARKER</b>	1	<b>E-688</b>	<b>0700-1900</b>	<b>HEAVENLY ICP</b>
EXCA HACKER MACHINES		<b>10/1</b>	<b>ARCE</b>	2	<b>E-50233</b>	<b>0700-1900</b>	<b>HEAVENLY ICP</b>
GRD JDB3		<b>9/27</b>	<b>WERRY</b>	2	<b>E-50147</b>	<b>0700-1900</b>	<b>HEAVENLY ICP</b>
GRD MILLSAPS		<b>9/24</b>	<b>HANSEN</b>	2	<b>E-50148</b>	<b>0700-1900</b>	<b>HEAVENLY ICP</b>
MAST JANC		<b>10/1</b>	<b>JANC</b>	2	<b>E-50251</b>	<b>0700-1900</b>	<b>HEAVENLY ICP</b>
MAST EVANS		<b>10/1</b>	<b>EVANS</b>	1	<b>E-50254</b>	<b>0700-1900</b>	<b>HEAVENLY ICP</b>
MAST PERRAULT		<b>10/1</b>	<b>DEQUIR</b>	2	<b>E-50250</b>	<b>0700-1900</b>	<b>HEAVENLY ICP</b>

**6. Work Assignments:**  
 TASK: Perform priority suppression repair work within Branch 3. Coordinate closely with CALFIRE AEU and USFS REAFs, focusing efforts in Christmas Valley, North Upper Truckee and Hope Valley  
 PURPOSE: Minimize any near-term environmental resource impacts as a result of fire suppression efforts  
 END STATE: Watershed and areas adjacent to values at risk are protected using the approved standard

**7. Special Instructions:**  
 Backhaul trash, excess supplies and provide a location for accountable property  
 Identify and coordinate the removal of hazard trees  
 Resources denoted with \* is identified as I/A resources within the TFR  
 \*\*\*Resources need to report to Heavenly ICP (3860 Saddle Rd., South Lake Tahoe, CA 96150) for briefing and end of shift\*\*\*

**8. Communications**

Name	Ch	Function	Rx Freq	Rx Tone	Tx Freq	Tx Tone	Notes
SEE ICS 205 COMM PLAN							

**9. Prepared by: Name:** Mike Yeun, Chris Adams, Derek Acosta(T)                      RESL                      Signature: 

**ICS 204**                      Date/Time: 9/18/2021 2200                      Personnel Count: 144



# ASSIGNMENT LIST (ICS 204 WF)

CONTROLLED UNCLASSIFIED  
INFORMATION//BASIC

<b>1. Incident Name:</b> <b>CALDOR</b>	<b>2. Operational Period:</b> Date From: 09/19/21    Date To: 09/20/21 Time From: 0700        Time To: 0700	<b>3. Branch</b> <b>Division</b> <b>Night</b> <b>Night</b>
---	---	---

<b>4. Operations Personnel:</b>		Page 1 of 1
Operations Section Chief: <b>Jim Snow, Mike Page(T)</b> Branch Director: <b>TBD</b> Division/Group Supervisor: <b>TBD</b>	Night Ops: <b>Mike Koontz, Luis Gomez(T)</b> Deputy Ops <b>Al Ward, Chris StPierre(T)</b> Air Attack:	

5. Resources Assigned:	** Resources Below in Bold are 12 Hour **						
Resource Identifier	ALS	LWD	Leader	Personnel	Request #	Hours	Reporting Location
ENG4 WY CAMPPELL BRUSH 2		9/29	<b>WHITE</b>	3	E-50221	1900-0700	HEAVENLY ICP
ENG4 NV-HTF E461		9/22	<b>ZAHRT</b>	3	E-50211	1900-0700	HEAVENLY ICP
ENG4 PVT E411		9/29	<b>MARTIN</b>	3	E-50197	1900-0700	HEAVENLY ICP
ENG5 GCT LAND MGMT		9/29	<b>CALDERON</b>	3	E-50191	1900-0700	HEAVENLY ICP
ENG6 MT-KNF 651		9/29	<b>BERGET</b>	8	E-50194	1900-0700	HEAVENLY ICP
ENG6 R04 311		9/29	<b>TURNER</b>	3	E-50200	1900-0700	HEAVENLY ICP
ENG6 BELLEVUE		9/30	<b>ARENAS</b>	2	E-50214	1900-0700	HEAVENLY ICP
ENG6 BLM AZ E3664		9/29	<b>HINDMAN</b>	7	E-50216	1900-0700	HEAVENLY ICP
ENG6 AZ-PNF E952		9/29	<b>BADGER</b>	7	E-50217	1900-0700	HEAVENLY ICP
MEDIC 2	X	9/29	<b>BLACK/ANDERSON</b>	2	E-20593	1900-0700	HEAVENLY ICP

**6. Work Assignments:**  
 TASK: Perform tactical patrol within the fire area, respond to any service calls, mitigate any isolated heat sources within the fire perimeter adjacent to infrastructures where safe to engage  
 PURPOSE: Minimize any fire progression, keeping the fire within its current footprint  
 END STATE: Fires edge is controlled and escape is improbable

**7. Special Instructions:**  
 Resources denoted with \* is identified as I/A resources within the TFR  
 \*\*\*Resources need to report to Heavenly ICP (3860 Saddle Rd., South Lake Tahoe, CA 96150) for briefing and end of shift\*\*\*

8. Communications							
Name	Ch	Function	Rx Freq	Rx Tone	Tx Freq	Tx Tone	Notes
SEE ICS 205 COMM PLAN							

**9. Prepared by: Name:** Mike Yeun, Chris Adams, Derek Acosta(T)                      RESL  
 Signature:   
 ICS 204                      Date/Time: 9/18/2021 2200                      Personnel Count: 41

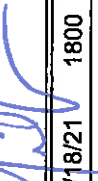
# ICS 205 - INCIDENT RADIO COMMUNICATIONS PLAN

CONTROLLED UNCLASSIFIED  
INFORMATION//BASIC

1. Incident Name: CALDOR EAST Z3		2. Date/Time Prepared Date: 09/18/2021 Time: 1800		3. Operational Period: Date From: 09/19/21 Time From: 0700		Date To: 09/20/21 Time To: 0700		
4. Communications								
Ch#	Function	Name	Assigned To	Rx Freq	Rx Tone	Tx Freq	Tx Tone	Notes
1	COMMAND	CMD 5	EAST BRANCHES	169.7500N	146.2	167.1000N	146.2	MONUMENT PK LINKED W/ C67,C93,C96
2	COMMAND	CMD 93	EAST BRANCHES	166.6875N	146.2	162.9375N	146.2	SCOUT LINKED W/C5,C67,C96
3	COMMAND	CMD 67	EAST BRANCHES	172.0750N	146.2	162.2000N	146.2	KIRKWOOD MT.LINKED W/C5,C93,C96
4	COMMAND	CMD 96	UNAVAILABLE	169.9625N	146.2	165.0500N	146.2	PYRAMID PEAK LINKED W/C5,C93,C67
5	COMMAND	CMD 56	WEST BRANCHES	172.3500N	114.8	163.0375N	114.8	MONUMENT PK LINK TO WEST
6	TACTICAL	NIFC T1	DIV I/M	168.0500N		168.0500N		
7	TACTICAL	NIFC T6	DIV O/P	166.7750N		166.7750N		
8	TACTICAL	NIFC T3	DIV Q	168.6000N		168.6000N		
9	TACTICAL	NIFC T7	DIV R	168.2500N		168.2500N		
10	TACTICAL	VFIRE 24	FIRE SUPP.REPAIR	154.2725N	156.7	154.2725N	156.7	
11	TACTICAL	VFIRE 25	NIGHT OPS	154.2875N	156.7	154.2875N	156.7	
12	A/G CMD	A/G CMD	ALL BRANCHES	167.9500N		167.9500N		
13	A/G TAC	A/G TAC	A/G BUCKETS	166.6125N		166.6125N		
14	A/G TAC	A/G TAC2	A/G LOGS	169.2875N		169.2875N		
15	COORDINATION	CALCORD	ALL BRANCHES	156.0750N	156.7	156.0750N	156.7	MEDICAL COORDINATION
16	EMERGENCY	GUARD 16	ALL BRANCHES	168.6250N		168.6250N	110.9	EMERGENCY USE ONLY
17								
18								
19								
20	EMERGENCY	GUARD 16	ALL BRANCHES	168.6250N		168.6250N	110.9	EMERGENCY USE ONLY

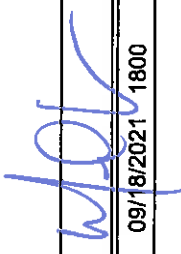
**EAST COMMUNICATION 208-850-8987**

**6. Prepared by: Name: MIKE GREENE COML**

Signature: 

Date/Time: 09/18/21 1800

# ICS 205 - INCIDENT RADIO COMMUNICATIONS PLAN

1. Incident Name:		2. Date/Time Prepared		3. Operational Period:				
CALDOR WEST Z1		Date: 09/18/2021 Time: 1800	Date: 09/19/21 Time From: 0700	Date To: 09/20/21 Time To: 0700				
<b>4. Communications</b>								
Ch#	Function	Name	Assigned To	Rx Freq	Rx Tone	Tx Freq	Tx Tone	Notes
1	COMMAND	CMD 109	WEST BRANCHES	170.3875N	114.8	162.1750N	114.8	BIG HILL
2	COMMAND	CMD 104	WEST BRANCHES	170.7625N	114.8	165.6250N	114.8	NORTH OF HWY 50 BETWEEN DP 21 AND DP 24
3	COMMAND	CMD 1	WEST BRANCHES	170.9750N	114.8	168.7000N	114.8	LEEK SPRINGS
4	COMMAND	CMD 11	WEST BRANCHES	170.6875N	114.8	166.575N	114.8	GRIZZLY FLATS AREA
5	COMMAND	CMD 113	WEST BRANCHES	170.3125N	114.8	165.6750N	114.8	KIRKWOOD MOUNTAIN
6	COMMAND	CMD 116	WEST BRANCHES	171.0375N	114.8	162.5875N	114.8	SIERRA SKI RESORT
7	TACTICAL	VTAC 13		158.7375N	156.7	158.7375N	156.7	
8	TACTICAL	NIFC T1	DIV G/TW	168.0500N		168.0500N		
9	TACTICAL	NIFC T6	FIRE SUPP.REPAIR	166.7750N		166.7750N		
10	TACTICAL	NIFC T3		168.6000N		168.6000N		
11	TACTICAL	NIFC T7		168.2500N		168.2500N		
12	A/G CMD	A/G CMD	ALL BRANCHES	167.9500N		167.9500N		AIR TO GROUND
13	A/G TAC	A/G TAC	A/G BUCKETS	166.6125N		166.6125N		
14	A/G TAC	A/G TAC2	A/G LOGS	169.2875N		169.2875N		
15	MEDICAL	CALCORD	ALL BRANCHES	156.0750N	156.7	156.0750N	156.7	EMS COORDINATION ONLY
16	EMERGENCY	GUARD 16	ALL BRANCHES	168.6250N		168.6250N	110.9	EMERGENCY USE ONLY
17								
18								
19								
20	EMERGENCY	GUARD 16	ALL BRANCHES	168.6250N		168.6250N	110.9	EMERGENCY USE ONLY
<b>5. Special Instructions</b>								
CALDOR COMMUNICATION ICP HEAVENLY 208-850-8987								
<b>6. Prepared by (Communications Unit Leader): Name: MIKE GREENE COM1</b>				Signature: 				
<b>ICS 205 - CONTROLLED UNCLASSIFIED INFORMATION/BASIC</b>				Date/Time: 09/18/2021 1800				

# ICS 205 - INCIDENT RADIO COMMUNICATIONS PLAN

CONTROLLED UNCLASSIFIED  
INFORMATION//BASIC

<b>1. Incident Name:</b> ENF/AEU INITIAL ATTACK ONLY	<b>2. Date/Time Prepared</b> Date: 09/18/2021 Time: 1800	<b>3. Operational Period:</b> Date To: 09/20/21 Time To: 0700
---	--	---

4. Communications								
Ch#	Function	Name	Assigned To	Rx Freq	Rx Tone	Tx Freq	Tx Tone	Notes
1	COMMAND	ENFADM 1		172.3250N	156.7	165.2250N	110.9	FOREST ADMIN Tone 1-Alder
2	COMMAND	ENFADM 2		172.3250N	156.7	165.2250N	123.0	FOREST ADMIN Tone 2-Leek Springs
3	COMMAND	ENFADM 4		172.3250N	156.7	165.2250N	136.5	FOREST ADMIN Tone 4-Big Hill
4	COMMAND	ENFADM 6		172.3250N	156.7	165.2250N	156.7	FOREST ADMIN Tone 6-Echo Summit
5	COMMAND	XAM CT10		154.7625N	123.0	159.1800N	107.2	AMADOR CMD Tone 10-Leek Springs
6	COMMAND	XAM CT11		154.7625N	123.0	159.1800N	114.8	AMADOR CMD Tone 11-Zion Mountain
7	COMMAND	XED CT11		155.9025N	186.2	159.2775N	114.8	EL DORADO CMD Tone 11-Union
8	COMMAND	XED CT1		155.9025N	186.2	159.2775N	110.9	EL DORADO CMD Tone 1-Alder
9	COMMAND	XED CT4		155.9025N	186.2	159.2775N	136.5	EL DORADO CMD Tone 4-Big Hill
10	TACTICAL	R5 T4		166.5500N		166.5500N		REGION 5 TAC 4
11	TACTICAL	R5 T5		167.1125N		167.1125N		REGION 5 TAC 5
12	TACTICAL	R5 T6		168.2375N		168.2375N		REGION 5 TAC 6
13	TACTICAL	CDF T2		151.1600N	192.8	151.1600N	192.8	
14	TACTICAL	CDF T8		151.3700N	192.8	151.3700N	192.8	
15	AIR TO GROUND	A/G TAC	AIR TO GROUND	164.1375N		164.1375N		
16	EMERGENCY	GUARD 8	EMERGENCY	168.6250N		168.6250N	110.9	
17								
18								
19								
20	EMERGENCY	GUARD 8	EMERGENCY	168.6250N		168.6250N	110.9	

**5. Special Instructions**

<b>6. Prepared by (Communications Unit Leader):</b> Name: MIKE GREENE	Signature:  Date/Time: 09/18/2021 1800
---	--



# ICS 205 - INCIDENT RADIO COMMUNICATIONS PLAN

CONTROLLED UNCLASSIFIED  
INFORMATION//BASIC

<b>1. Incident Name:</b> TAHOE BASIN I/A	<b>2. Date/Time Prepared</b> Date: 09/18/21 Time: 1800	<b>3. Operational Period:</b> Date From: 09/19/21 Date To: 09/20/21 Time From: 0700 Time To: 0700
---	--	---

4. Communications									
Ch#	Function	Name	Assigned To	Rx Freq	Rx Tone	Tx Freq	Tx Tone	Notes	
1	FOREST NET	ENF T9	ALL DIVS	171.5250N	156.7	162.7500N	T9-100.0	HAWKINS PK	
2	FOREST NET	TMU T2	ALL DIVS	172.3750N	156.7	164.9625N	T2-123.0	EAST PK	
3	FOREST NET	HTF T3	ALL DIVS	173.7750		165.7500N	T3-131.8	HAWKINS PK	
4	TACTICAL	NIFC T1	ALL DIVS	168.0500N		168.0500N			
5	TACTICAL	NIFC T2	ALL DIVS	168.200N		168.200N			
6	TACTICAL	R5T4	ALL DIVS	166.5500N		166.5500N			
7	TACTICAL	R5T5	ALL DIVS	167.1125N		167.1125N			
8	TACTICAL	VFIRE22	ALL DIVS	154.2650N	156.7	154.2650N	156.7		
9	TACTICAL	VFIRE23	ALL DIVS	154.2950N	156.7	154.2950N	156.7		
10	TACTICAL	VFIRE 26	ALL DIVS	154.3025N	156.7	154.3025N	156.7		
11	TACTICAL	CCD SOA	ALL DIVS	171.6750N		171.6750N		AKA" BLM SOA"	
12	TACTICAL	NDF RED 1	ALL DIVS	159.3450N		159.3450N			
13	AIR TO GROUND	A/G 14	ALL DIVS	167.5000N		167.5000N		I/A A/G-ENF/TMU	
14	AIR TO GROUND	A/G 51	ALL DIVS	168.3125N		168.3125N		I/A A/G-SIERRA FRONT	
15	MEDICAL	CALCORD	ALL DIVS	156.0750N	156.7	156.0750N	156.7	MEDICAL COORDINATION	
16	EMERGENCY	GUARD	EMERGENCY	168.6250N		168.6250N	110.9	EMERGENCY CONTACT	
17									
18									
19									
20	EMERGENCY	GUARD	EMERGENCY	168.6250N		168.6250N	110.9	EMERGENCY CONTACT	

**5. Special Instructions**

<b>6. Prepared by (Communications Unit Leader):</b> Name: MIKE GREENE	Signature: 
ICS 205 - CONTROLLED UNCLASSIFIED INFORMATION//BASIC	NIMS IAP Date/Time: 09/18/21 1800



# AIR OPERATIONS SUMMARY

PREPARED BY: JoAnn Overacker

PREPARED DATE - TIME: 09/18/21 - 1800

1. INCIDENT NAME: <b>Calcor</b>	2. OPERATIONAL PERIOD DATE: <b>9/19/21</b>	START: <b>0700</b>	END: <b>2000</b>	SUNRISE: <b>0645</b>	SUNSET: <b>1902</b>
3. REMARKS (Safety Notes, Hazards, Air Operations Special Equipment, etc.) <b>Be advised, HIGH WINDS expected for morning hours!</b> <b>Track total gallons pulled per Dip Site and note on Helicopter Cost Summary.</b> <b>Ensure Covid precautions are exercised at Helibase</b>					
4. MEDEVAC A/C: H-5PT for Type II H-873 Hoist NVG See Medical Plan		5. TFR: Radius: Polygon Altitude: 11,500 MSL Center: Frequency: 118.6250			

6. PERSONNEL	Phone	7. FREQUENCIES	AM	EM	8. FIXED-WING	# Avail/Type/Make-Model/ FAA NR / Base(s)
AOPD: JoAnn Overacker	209-559-1617	AIR/AIR FW:	118.6250		Airtankers	As Ordered: AA
ASGS(t): Rex Sundstrom	530-575-0368	AIR/AIR RW:	133.0250		Lead Planes	As Ordered
HEBM: Cammie Roy	907-750-6620	AIR TACTICS:	163.3375	167.9500	ATGS Aircraft	As Ordered
HEBM(t): Scott Magargee	205-335-4932	A/G CMD:		166.6125		
ATGS: Todd White	530-263-5621	A/G Buckets:		169.2875		
HLCO: Matt Lynde	530-941-4600	A/G Cargo/Recon:		163.1000		
		DECK:				
		TVL TEMP Tower:	127.1250	156.0750		
		CALCORD:		168.6250		
		GUARD 16:				

9. HELICOPTERS (Use Additional Sheets As Necessary)						
FAA #	Type	MAKE/MODEL	BASE	AVAIL	START	REMARKS
133HT	I	UH-60	Tahoe	0800	0700	Bucket - EU
8CH	I	CH-47	Tahoe	"	"	Bucket - EU
5HT	I	CH-54	Tahoe	"	"	Tank - EU
1BH	I	UH-60	Tahoe	"	"	Bucket - CWIN
5PT	II	Bell 205++	Tahoe	"	"	Bucket - EU
69H	II	Bell 205++	Tahoe	"	"	Rappel - EU
4HX	III	Bell 407	Tahoe	"	"	EU
5AE	III	A-Star 350	Tahoe	"	"	EU
509	III	Cobra	Tahoe	"	"	HILCO

# MEDICAL PLAN (ICS 206 WF) CIIMT 12

<b>1. Incident Name</b>				<b>2. Operational Period</b>				
<b>CALDOR INCIDENT</b>				Date/Time: <b>09/19/2021 – 09/20/2021 (24 hours)</b>				
<b>3. EMS / Ambulance Services/Aid Stations</b>								
<b>Name</b>	<b>Location</b>			<b>Frequency/Phone</b>		<b>Advanced Life Support (ALS)</b> Yes      No		
MEDICAL UNIT	ICP			805-813-3858 909-908-4778		X		
EL DORADO	CAMINO ECC SLT DISPATCH			530-647-5220 530-542-6148		X		
AMERICAN LEGION	CAMINO ECC SLT DISPATCH			530-647-5220 530-542-6148		X		
<b>4. Air Rescue / Air Ambulance Services</b>								
<b>Name</b>	<b>Phone</b>			<b>Type of Aircraft &amp; Capability</b>				
GUARD 873	CAMINO ECC 530-647-5220			HELICOPTER, ALS, 24/7 - HOIST				
CAREFLIGHT	CAMINO ECC 530-647-5220			AIR AMBULANCE ALS – NO HOIST				
CALSTAR 6	CAMINO ECC 530-647-5220			AIR AMBULANCE ALS – NO HOIST				
<b>5. Hospitals (all times estimated from incident location)</b>								
<b>Name &amp; Level</b>	<b>GPS Datum – WGS 84 Degrees Decimal Minutes</b>		<b>Travel Time Air      Gnd</b>		<b>Phone</b>	<b>Helipad Yes      No</b>		<b>Address</b>
BARTON MEMORIAL HOSPITAL (LEVEL 3)	Lat:	N 38° 54.72'	2 MIN	5 MIN	530-541-3420	X		2170 South Ave. South Lake Tahoe, CA 96150
	Long:	W 119° 59.72'						
RENOWN REGIONAL MEDICAL CENTER (LEVEL 2)	Lat:	N 39° 31.51'	20 MIN	1.5 HRS	775-982-2005	X		1156 Mill St Reno, NV 89502
	Long:	W 119° 47.75'						
SUTTER ROSEVILLE MEDICAL CENTER (LEVEL 2)	Lat:	N 38° 45.97'	45 MIN	3 HRS	916-781-1200	X		1 Medical Plaza Dr. Roseville, CA 95661
	Lat:	W 121° 14.87'						
UC DAVIS MEDICAL CENTER (LEVEL 1 TRAUMA/BURN)	Lat:	N 38° 33.32'	45 MIN	3 HRS	916-703-6576	X		2315 Stockton Blvd. Sacramento, CA 95817
	Long:	W 121° 27.35'						
<b>6. Division / Crew Emergency Pre-Plan</b>								<i>Update and discuss with assigned resources daily.</i>
<b>Fireline EMT / Medic's Division / Branch Location</b>								
<b>Air Hoist site location site: Lat: / Long: / Elevation:</b>								
<b>Helispot: Lat: / Long: / Elevation:</b>								
<b>7. Prepared By (Medical Unit Leader)</b>			<b>8. Date/Time</b>		<b>9. Reviewed By (Safety Officer)</b>		<b>10. Date/Time</b>	
MEDL NICK STEPANIAN 909-908-4778 MEDL BRANDON BENNEWATE 805-813-3858			09/18/2021 1600		SOF2 PAUL TOMPKINS 619-889-7533		09/18/2021 1600	
<i>Brandon Bennewate</i>					<i>Paul Tompkins</i>			

# MEDICAL PLAN (ICS 206 WF) CIIMT 12

## Medical Incident Report

**FOR A NON-EMERGENCY INCIDENT, WORK THROUGH CHAIN OF COMMAND TO REPORT AND TRANSPORT INJURED PERSONNEL AS NECESSARY.**

**FOR A MEDICAL EMERGENCY: IDENTIFY ON SCENE INCIDENT COMMANDER BY NAME AND POSITION AND ANNOUNCE "MEDICAL EMERGENCY" TO INITIATE RESPONSE FROM IMT COMMUNICATIONS/DISPATCH.**

**Use the following items to communicate situation to communications/dispatch.**

**1. CONTACT COMMUNICATIONS / DISPATCH** (Verify correct frequency prior to starting report)

*Ex: "Communications, Div. Alpha. Stand-by for Emergency Traffic."*

**2. INCIDENT STATUS:** Provide incident summary (including number of patients) and command structure.

*Ex: "Communications, I have a Red priority patient, unconscious, struck by a falling tree. Requesting air ambulance to Forest Road 1 at (Lat./Long.) This will be the Trout Meadow Medical, IC is TFLD Jones. EMT Smith is providing medical care."*

Severity of Emergency / Transport Priority	<input type="checkbox"/> <b>RED / PRIORITY 1</b> Life or limb threatening injury or illness. Evacuation need is <b>IMMEDIATE</b> <i>Ex: Unconscious, difficulty breathing, bleeding severely, 2<sup>o</sup> - 3<sup>o</sup> burns more than 4 palm sizes, heat stroke, disoriented.</i> <input type="checkbox"/> <b>YELLOW / PRIORITY 2</b> Serious Injury or illness. Evacuation may be <b>DELAYED</b> if necessary. <i>Ex: Significant trauma, unable to walk, 2<sup>o</sup> - 3<sup>o</sup> burns not more than 1-3 palm sizes.</i> <input type="checkbox"/> <b>GREEN / PRIORITY 3</b> Minor Injury or illness. <b>Non-Emergency transport</b> <i>Ex: Sprains, strains, minor heat-related illness.</i>	
Nature of Injury or Illness & Mechanism of Injury		Brief Summary of Injury or Illness <i>(Ex: Unconscious, Struck by Falling Tree)</i>
Transport Request		Air Ambulance / Short Haul/Hoist Ground Ambulance / Other
Patient Location		Descriptive Location & Lat. / Long. <i>(WGS84)</i>
Incident Name		Geographic Name + "Medical" <i>(Ex: Trout Meadow Medical)</i>
On-Scene Incident Commander		Name of on-scene IC of Incident within an Incident <i>(Ex: TFLD Jones)</i>
Patient Care		Name of Care Provider <i>(Ex: EMT Smith)</i>

**3. INITIAL PATIENT ASSESSMENT:** Complete this section for each patient as applicable (start with the most severe patient)

Patient Assessment: See IRPG PAGE 106

Treatment:

**4. TRANSPORT PLAN:**

Evacuation Location (if different): (Descriptive Location (drop point, intersection, etc.) or Lat. / Long.) Patient's ETA to Evacuation Location:

Helispot / Extraction Site Size and Hazards:

**5. ADDITIONAL RESOURCES / EQUIPMENT NEEDS:**

*Example: Paramedic/EMT, Crews, Immobilization Devices, AED, Oxygen, Trauma Bag, IV/Fluid(s), Splints, Rope rescue, Wheeled litter, HAZMAT, Extrication :*

**6. COMMUNICATIONS: Identify State Air/Ground EMS Frequencies and Hospital Contacts as applicable**

Function	Channel Name/Number	Receive (RX)	Tone/NAC *	Transmit (TX)	Tone/NAC *
COMMAND					
AIR-TO-GRND					
TACTICAL					

**7. CONTINGENCY- Considerations:** If primary options fail, what actions can be implemented in conjunction with primary evacuation method? Be thinking ahead. .

**8. ADDITIONAL INFORMATION:** Updates/Changes, etc. .

**REMEMBER:** Confirm ETA's of resources ordered. Act according to your level of training. Be Alert. Keep Calm. Think Clearly. Act Decisively. .

# **Fire and COVID-19 Briefing Checklist**

## **Self-Awareness / Screening**

- Notify supervisor if you or others experience:
  - Cough, more than expected
  - Difficulty breathing
  - Loss of taste or smell
  - Fever
  - Chills
  - Sore throat
  - Muscle pain
- Immediately separate yourself from others.
- Follow crew and division plans to isolate, triage, and transport symptomatic personnel.

## **Hygiene on the Fireline**

- Properly wash or sanitize your hands often
- Avoid handshakes and communal use items
- Inform supervisor of needed resupply.
- Disinfect high touch surfaces often

## **Social distancing and protective equipment**

- Practice social distancing
- Conduct briefings in conversations outdoors and at least SIX feet apart
- Utilize face coverings
- Clean or replace dirty face coverings, equipment, and PPE

## **Communications**

- Ensure effective sender/receiver messaging.
- Protect yourself, your crew, and your camp!

Any questions contact:

BARTON HEALTH COVID HOTLINE: 530-600-1999

MEDL Brandon Bennewate @ (805) 813-3858

MEDL Nick Stepanian @ (909) 908-4778



## FINANCE MESSAGE

<b>Fire Name:</b> Caldor Fire
<b>Fire Number:</b> CA-ENF-024030
<b>Accounting Code:</b> P5N8GM21
Email: <a href="mailto:2021.caldor.finance@firenet.gov">2021.caldor.finance@firenet.gov</a>
Hotline: 530-330-5450

### Finance Documents Needed upon "Check In" (If Not Already Submitted):

Please email these documents or scan the QR Code below, attach & submit.			
<b>Agency Equipment/ Crews:</b> <ul style="list-style-type: none"> <li>Manifest - showing employment type (GS or WG) or AD rates if applicable</li> </ul>	<b>Overhead:</b> <ul style="list-style-type: none"> <li>AD/Casual Hire Form</li> <li>If regular Agency please ensure "GS" or "WG" is written on your first CTR</li> </ul>	<b>Contract Equipment/ Contract Crews:</b> <ul style="list-style-type: none"> <li>Agreement</li> <li>Manifest</li> <li>Resource Order</li> <li>Inspections</li> </ul>	<b>Cooperator:</b> <ul style="list-style-type: none"> <li>Cooperative Agreement</li> <li>Resource Order</li> </ul>

### Please submit your CTR/Shift Tickets using the QR code or email address below:

Don't Forget to put your RO # on your CTR/Shift Ticket – final travel CTR's must be signed by supervisor on incident - Thank You

**Please Include the Word "Equipment" for Federal Equipment or "Time" for Federal Overhead & Crews in the Subject Line of the Email**



# Fire Information

California Team 12 Fire Information is at your service! Not only do we provide information to the public during an incident, but we also serve the personnel assigned to it. These services include:

**Lost and Found** – If you lost something, stop by the PIO yurt at the end of Main Street to see if it has been turned in. If it's not here, you can fill out a 213 with a description of the item and your contact information. If it turns up later, we'll contact you.

**Mail** – CAIIMTeam 12 can provide mail services during your deployment so you can pay bills or send letters to your loved ones. To send or receive mail, please use this mailing address:

Caldor Fire Camp  
Attn: [Your Name & RO/Crew Name]  
3680 Saddle Road  
South Lake Tahoe, CA 96150



**Photos** – We'd love to get photos of you and your crew hard at work to share on Facebook and Twitter! Action photos help tell the story of the Caldor Fire and the heroic efforts of the firefighters who work on it. Please keep in mind that we can only use photos with crew members wearing appropriate PPE. But please do not lose your situational awareness just for that one photo!

Share your photos by stopping by the PIO shop or email your top pics to:  
[2021Caldor@firenet.gov](mailto:2021Caldor@firenet.gov).

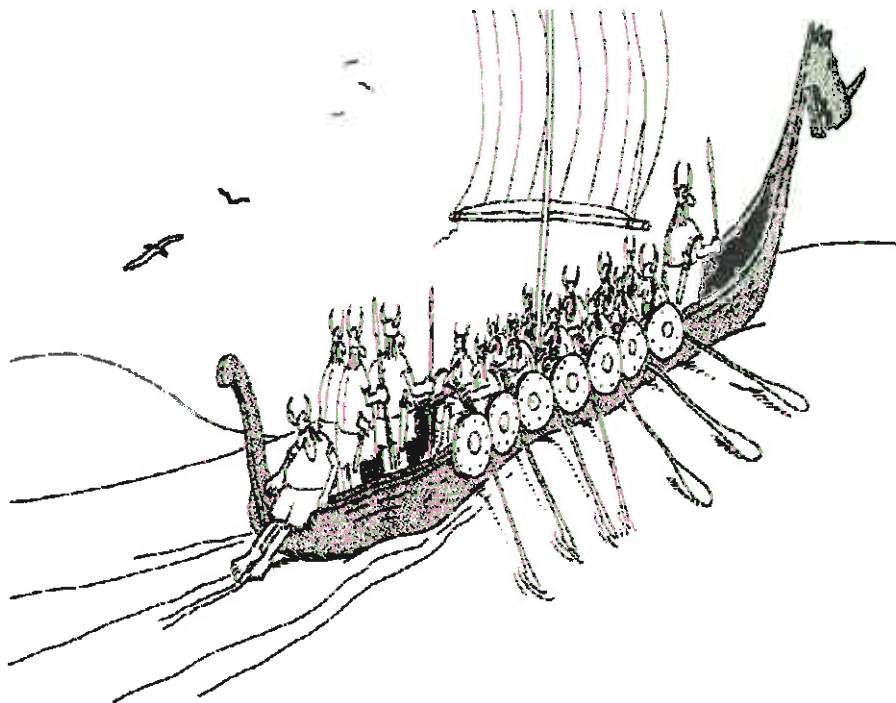
**A BAER in the woods** – A BAER team has been established by the Lake Tahoe Basin Management Unit and the Eldorado National Forest to provide a burned area assessment of the Caldor Fire. For more information, please visit Caldor Post-Fire BAER Information web site: [inciweb.nwcg.gov/incident/7842/](http://inciweb.nwcg.gov/incident/7842/)

Thank you and stay safe out there.

**Caldor Fire Information:** (530) 303-2455  
**Media Information:** (530) 497-0315

## **FIVE MISTAKES HUMANS MAKE**

- 1. The delusion that personal gain is made by crushing others.**
- 2. Refusing to set aside trivial preferences.**
- 3. Insisting that something is impossible because you have not accomplished it yet.**
- 4. The tendency to worry about things that cannot be changed.**
- 5. Attempting to compel others to believe and live as we do.**



**Don't be the person dragging your feet...**

**Your Human Resource Specialist is located on trailer row**

**Come see me, phone or email if you have any questions or concerns**

**Linda Overton 707-373-7631**

**[linda.overton@usda.gov](mailto:linda.overton@usda.gov)**





**WE NEED YOU !**



## **To Check out with Training .**

**While we have ordered another training specialist. The order has not been filled yet.**

**The onsite Training specialist will be at Heavenly tomorrow till 1800.**

**For speedy checkout, text a picture of your performance eval. to 334-202-2415. If your taskbook is completed, also send a picture of Final Evaluator's Verification (pg. 2 of your taskbook ) along with your Final Evaluator record from task book.**

**Ensure information is complete and legible!**

**Please complete Trainee Exit Interview If time permits**



Stay tuned to IAP for Updates for procedures for tracking trainees as they come

Questions? Contact Joseph T. Smith Caldor Incident Training Specialist Trainee 334-202-2415 TNSPJTS@GMAIL.Com



# **VIRTUAL DEMOBILIZATION**

**Please follow the steps below in order:**

- 1. Scan the QR code and select the “Virtual Demob” item**
- 2. Complete the questionnaire**
- 3. Go to Weed Wash if indicated**
- 4. Go to Ground Support for your post-inspection if indicated**
- 5. Return items checked out from Supply**
- 6. Return any items checked out in Comms**
- 7. Go to Finance at the scheduled time to close out your CTR/Shift Tickets**
- 8. Call Demob at 435-840-5432 to finalize your travel times.**

## **PLEASE NOTE:**

**If you have any problems contact Jan-DMOB either by phone 435-840--5432 or in person at the DEMOB window.**

# TENTATIVE DEMOBS FOR SUNDAY, SEPTEMBER 19, 2021

## CREWS

TIME	RESOURCE #	RESOURCE NAME	ITEM CODE
0630	C-50014	SIERRA HOTSHOTS IHC	HC1
0700	C-99	UKIAH 4	CC

## EQUIPMENT

TIME	RESOURCE #	RESOURCE NAME	ITEM CODE
0700	E-618	MICHAEL BUTALA	MEC
0715	E-50115	MED SUPPORT UNIT	RES
0730	E-50083	KRITZ	WTS1
0745	E-20172	GOLDEN STATE	WTS2
0800	E-50119	AZ-FLG 153	ENG3
0815	E-50010	RO1 E3553	ENG3
0830	E-50121	AFS E662	ENG6
0845	E-21265	DVT 6462	ENG6
0900	E-50125	EIS 661	ENG6
0915	E-21100	NM ENG 621	ENG6
0930	E-563	GFS ENG 62	ENG6
0945	E-21223	MO ENG 611	ENG6
1000	E-50120	FLAMECATCHERS	ENG4
1015	E-21268	AAA THUNDERBOLT ENG T11	ENG4
1015	E-50122	OES S/T 5812C	ES3
1045	E-561	TNF 1218	ENG3
1100	E-21098	EIC 612	ENG6
1115	E-21224	DRC 33	ENG3
1130	E-21273	BIA 511	ENG6
1145	E-50117	ENG 6291	ENG 3

## OVERHEAD

TIME	RESOURCE #	RESOURCE NAME	ITEM CODE
0630	O-445	RANDY SMITH	PSCT
0645	O-515	RODGER WATERS	COMP
0715	O-50156	TROY LUHNOW	EQPM
0730	O-50139	JORDAN CARTER	BCMG
0745	O-20705	SHELBY CHARLEY JR	RADO
0800	O-50131	DANIEL BROOCKMANN	REAF
0815	O-50089	MOEN TIMBER LOGGING	FAL1
0830	O-50038	JOSEPH SMITH	TNSP
0845	O-50083	GIANNA VACCARO	DOCL
0900	O-50107	MID PLAINS MOD	SMOD
0700	O-50093	JAMES SEARCY	DIVS
0915	O-20875	LANI BROWN	TFLD

## **HOTEL ROOM PROCESS:**

If you are a Federal Resource and have a travel card, steps 1-5 **DO NOT** apply to you. Travel will be processed in ETS2.

If you require an S-number for lodging, submit a 213 for approval with Finance.

For Non-Federal resources, or resources that are not self-sufficient, obtain the following...

1. A SIGNED 213 FROM FINANCE VALIDATING THE NEED FOR HOTEL ROOM (I.E. NO TRAVEL/PURCHASE CARD, A.D. WITHOUT GOVT. CC, SEASONALS)
2. PROVIDE FINANCE WITH RESOURCE ORDER AND CREW MANIFEST (ACCURATE, WITH FULL NAMES & SIGNED)
3. BRING SIGNED 213 AND RESOURCE ORDER TO CALDOR **ORDERING** (LOCATED ON MAIN ST)
4. REQUEST WILL BE FORWARDED TO EXPANDED & BUY TEAM
5. CHECK IN WITH ORDERING IN THE EVENING FOR STATUS OF HOTEL ROOM(S).

## **INSTRUCTIONS FOR LODGING (CALDOR FIRE)**

**LODGING** is at **HARVEY's** which is on the lake side of Highway 50. **CHECK-IN** is at **HARRAH's** which is directly across the street from Harvey's.

### **PARKING FOR LARGE VEHICLES (Engines and Crew Transports)**

Parking for large vehicles will be behind **HARRAH's** in the parking lot closest to Lake Parkway. You will see a motorhome and boat currently in this lot. Collect the parking ticket, but your room key will be used to enter and exit the parking lot.

### **PARKING FOR SMALL VEHICLES (Car, Pickup, etc)**

Parking for small vehicles is in the Harvey's Parking Garage. Near Stateline you will see the entrance for Harvey's. Turn into Harvey's and the Parking Garage is to your right. Collect the parking ticket, but your room key will be used to enter and exit the parking lot.

### **REGISTRATION (HARRAH's)**

All registration (check-in) will be at Harrah's Registration Desk. If you filled out your paperwork on 9/18, Harrah's should have your reservation and be ready to check you in.

If you parked at Harrah's, enter Harrah's from the parking lot, and follow signs to the Registration Desk

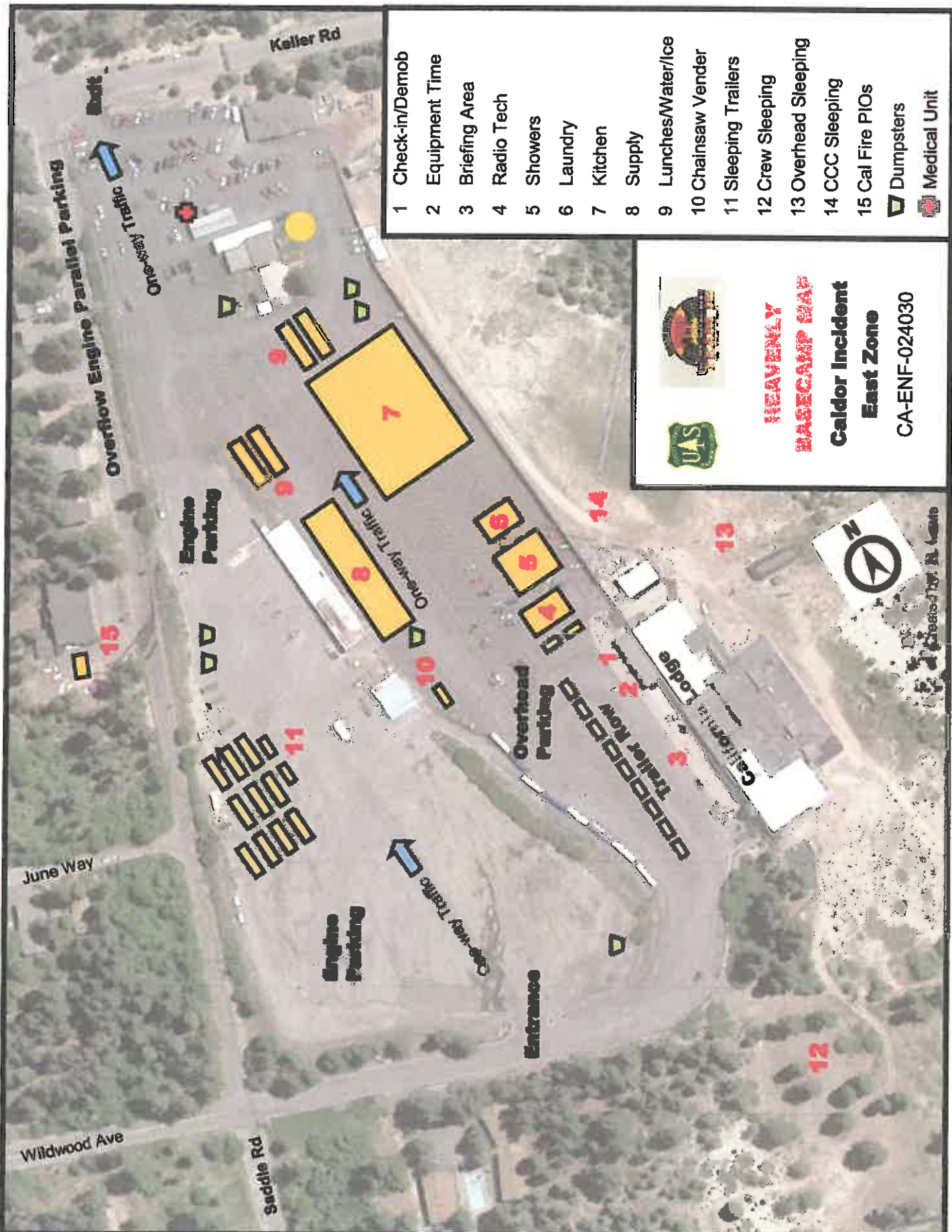
If you park at Harvey's, take the underground tunnel to Harrah's, or at street level, cross at the light, enter Harrah's and follow signs to the Registration Desk.

### **REGISTRATION (keys to your room)**

Remember you will be checking in at Harrahs, but your lodging is in Harvey's across the street. From Harrahs, proceed through the underground tunnel to Harvey's, or cross the street at the light and find the elevator to your room.

### **NEW RESERVATIONS**

Call 1-800-Harrahs (1-800-427-7247). This is a general reservation line for Caesar's Entertainment. You will need to tell them you are booking a reservation at **HARVEYs LAKE TAHOE** with the **CALDOR** group reservation. It is important they give you the government rate for the Caldor group reservation. Rooms are double occupancy unless you are a single resource.



- 1 Check-in/Demob
- 2 Equipment Time
- 3 Briefing Area
- 4 Radio Tech
- 5 Showers
- 6 Laundry
- 7 Kitchen
- 8 Supply
- 9 Lunches/Water/Ice
- 10 Chainsaw Vender
- 11 Sleeping Trailers
- 12 Crew Sleeping
- 13 Overhead Sleeping
- 14 CCC Sleeping
- 15 Cal Fire PIOs



**HEAVENLY  
BASECAMP MAP**

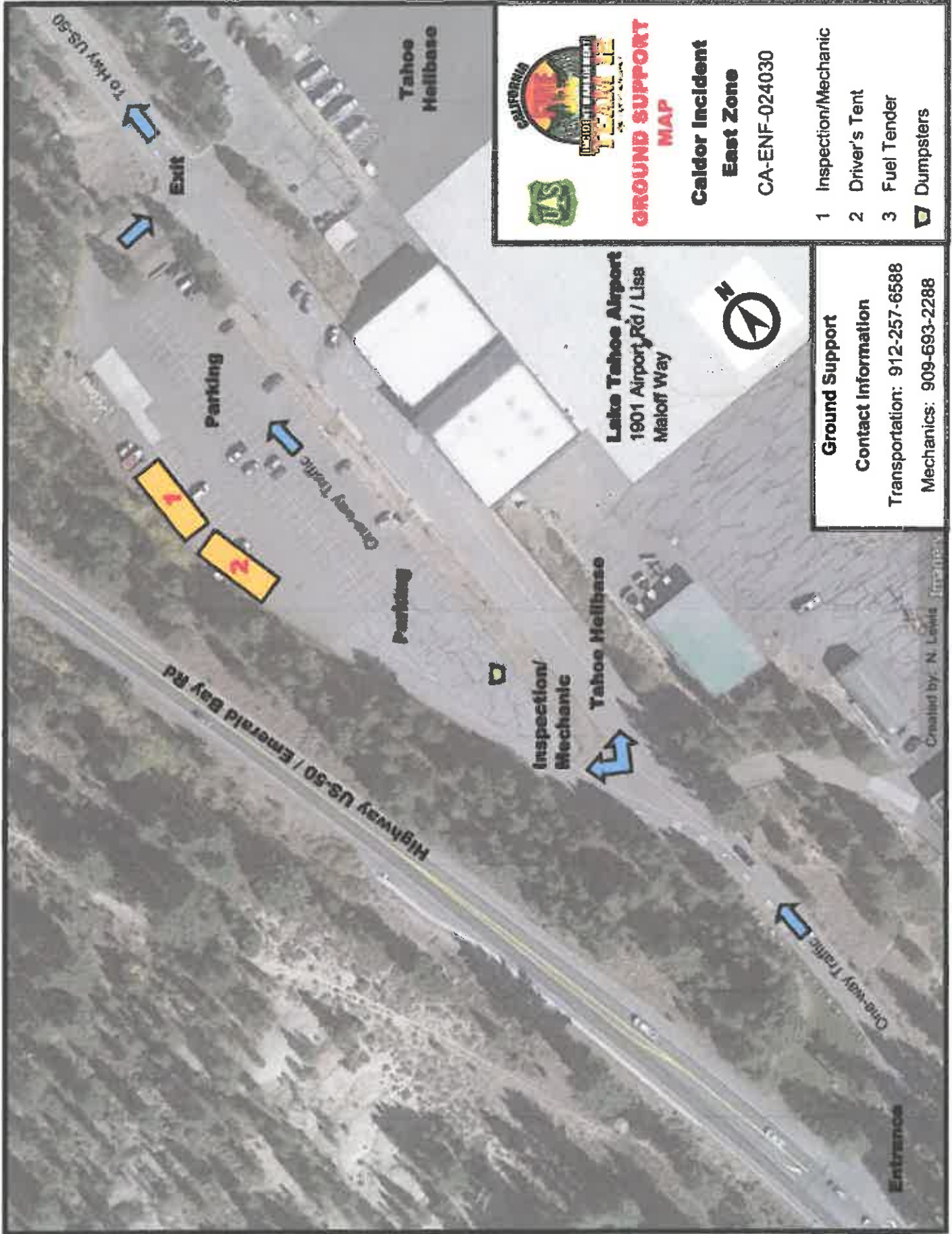
**Caldor Incident  
East Zone**

CA-ENF-024030



Created by N. Lewis







**GROUND SUPPORT MAP**

**Calder Incident**  
**East Zone**  
 CA-ENF-024030

- 1 Inspection/Mechanic
- 2 Driver's Tent
- 3 Fuel Tender

 Dumpsters

**Ground Support**

**Contact Information**

Transportation: 912-257-6588  
 Mechanics: 909-693-2288

Created by: N. Lewis

**STATE DPA  
CAL FIRE  
RESOURCES**















# ASSIGNMENT LIST (ICS 204 WF)

CONTROLLED UNCLASSIFIED  
INFORMATION/BASIC

<b>1. Incident Name:</b>	<b>2. Operational Period:</b>	<b>3. Branch</b>	<b>Division</b>
<b>AEU CALDOR SUPPORT</b>	Date From: 09/19/21    Date To: 09/20/21 Time From: 0700            Time To: 0700	<b>FSR EAST</b>	<b>EAST</b>
<b>4. Operations Personnel:</b>		Page 1 of 2	

Operations Section Chief: <b>J. Vickers</b> Branch Director: <b>M. Scheeline (12hr)</b> Division/Group Supervisor: <b>N. Ozard (12hr)</b>	Night Ops: Branch Safety: Air Attack:
---	---

5. Resources Assigned:		** Resources Below in Bold are 12 Hour **						
Resource Identifier	ALS	LWD	Leader	Personnel	Request #	Hours	Reporting Location	
DOZ PVT E-73 NORTH WESTERN			<b>M. Salters</b>	1	<b>E-73</b>	0700-1900	Chateau	
DOZ PVT E-74 SLOWOW			<b>R. Lee</b>	1	<b>E-74</b>	0700-1900	Chateau	
DOZ PVT E-75 NORTH WESTERN			<b>B Waddell</b>	1	<b>E-75</b>	0700-1900	Chateau	
DOZ PVT E-77 STAR			<b>A. Bennett</b>	1	<b>E-77</b>	0700-1900	Chateau	
DOZ PVT E-78 SHANNON CATTLE				1	<b>E-78</b>	0700-1900	Chateau	
W/T PVT E-49 DAHL			<b>M. Dahl</b>	1	<b>E-49</b>	0700-1900	Chateau	
W/T PVT E-51 FIRELINE			<b>R. Hurl</b>	1	<b>E-51</b>	0700-1900	Chateau	
W/T PVT E-52 DRE			<b>R. Ertl</b>	1	<b>E-52</b>	0700-1900	Chateau	
W/T PVT E-50 MORRIS			<b>C. Morris</b>	1	<b>E-50</b>	0700-1900	Chateau	
MAST PVT E-91 KRISMAN			<b>T. Krisman</b>	1	<b>E-91</b>	0700-1900	Chateau	
MAST PVT E-92 HEAVY HAUL			<b>A. Harris</b>	1	<b>E-92</b>	0700-1900	Chateau	
MAST PVT E-93 COLLINS			<b>M. Collins</b>	1	<b>E-93</b>	0700-1900	Chateau	
MAST PVT E-94 COLMAN			<b>P. Leuzinger</b>	1	<b>E-94</b>	0700-1900	Chateau	
MAST PVT E-95 BLACK BEAR			<b>M. Bwiling</b>	1	<b>E-95</b>	0700-1900	Chateau	
MAST PVT E-96 STEVEN HILL			<b>S. Hill</b>	1	<b>E-96</b>	0700-1900	Chateau	
MAST PVT E-97 GOLTERMAN			<b>C. Golterman</b>	1	<b>E-97</b>	0700-1900	Chateau	
MAST PVT E-104 SMITH			<b>D. Huskey</b>	1	<b>E-104</b>	0700-1900	Chateau	
MAST PVT E-109 SLOWMOW			<b>M. North</b>	1	<b>E-109</b>	0700-1900	Chateau	

**6. Work Assignments:**  
 Implement Fire Suppression repair plan.  
 Identify and document fire suppression repair needs.

**7. Special Instructions:**

8. Communications							
Name	Ch	Function	Rx Freq	Rx Tone	Tx Freq	Tx Tone	Notes
CDF C11	2	COMMAND	151.1675	103.5 (T8)	159.3975	151.4 (T14)	SCOUT PEAK TAHOE BASIN FSR GROUP EAST
CDF T28	9	TACTICAL	151.1825	192.8 (T16)	151.1825	192.8 (T16)	Tactical
A/G TAC 2	14	AIR TO GROUND	169.2875		169.2875		A/G TAC SECONDARY
CALCORD	15	MEDICAL	156.0750	156.7 (T6)	156.0750	156.7 (T6)	EMS COORDINATION ONLY
GUARD 16	16	EMERGENCY	168.6250		168.6250	110.9 (T1)	EMERGENCY USE ONLY

<b>9. Prepared by: Name:</b>	N. Pimiott	RESL	24 Hr Shift: 0
	Signature:		12 Hr Shift: 18
<b>ICS 204</b>	Date/Time: 9/18/2021 2200		Total: 18

# ASSIGNMENT LIST (ICS 204 WF)

CONTROLLED UNCLASSIFIED  
INFORMATION/BASIC

<b>1. Incident Name:</b> <b>AEU CALDOR SUPPORT</b>	<b>2. Operational Period:</b> Date From: 09/19/21    Date To: 09/20/21 Time From: 0700        Time To: 0700	<b>3. Branch</b> <b>Division</b> <b>FSR EAST</b> <b>EAST</b>
<b>4. Operations Personnel:</b>		Page 2 of 2

Operations Section Chief: <b>J. Vickers</b> Branch Director: <b>M. Scheeline (12hr)</b> Division/Group Supervisor: <b>N. Ozard (12hr)</b>	Night Ops: Branch Safety: Air Attack:
---	---

5. Resources Assigned:		** Resources Below in Bold are 12 Hour **					
Resource Identifier	ALS	LWD	Leader	Personnel	Request #	Hours	Reporting Location
EXC PVT E-12 NONNI			<b>A. Nonini</b>	1	<b>E-12</b>	<b>0700-1900</b>	Chateau
EXC PVT E-47 KDK			<b>K. Drew</b>	1	<b>E-47</b>	<b>0700-1900</b>	Chateau
EXC PVT E-53 FOOTHILL			<b>K. Kent</b>	1	<b>E-53</b>	<b>0700-1900</b>	Chateau
EXC PVT E-61 HARDSCAPE			<b>C. Pincher</b>	1	<b>E-61</b>	<b>0700-1900</b>	Chateau
EXC PVT E-65 LESLIE			<b>J. Kroller</b>	1	<b>E-65</b>	<b>0700-1900</b>	Chateau
SKD PVT E-10 KLEE			<b>J. Klee</b>	1	<b>E10</b>	<b>0700-1900</b>	Chateau
CHIP PVT E-2 CTS				1	<b>E-2</b>	<b>0700-1900</b>	Chateau
CHIP PVT E-3 TIMBERSMITH				1	<b>E-3</b>	<b>0700-1900</b>	Chateau
CHIP PVT E-59 LESLIE			<b>F. Stone</b>	1	<b>E-59</b>	<b>0700-1900</b>	Chateau
GRD PVT E-117 KDK			<b>L. Drew</b>	1	<b>E-117</b>	<b>0700-1900</b>	Chateau
HEQB(T) BARDWELL			<b>J. Bardwell</b>	1	<b>O-36</b>	<b>0700-1900</b>	Chateau
FSRS COLLAMER			<b>S. Collamer</b>	1	<b>O-30</b>	<b>0700-1900</b>	Chateau
FSRS SHORT			<b>L. Short</b>	1	<b>O-34</b>	<b>0700-1900</b>	Chateau
FSRS WHITSON			<b>G. Whitson</b>	1	<b>O-35</b>	<b>0700-1900</b>	Chateau
FSRS(T) ALEGRIA			<b>N. Alegria</b>	1	<b>O-31</b>	<b>0700-1900</b>	Chateau
FSRS STONE			<b>A. Stone</b>	1	<b>O-37</b>	<b>0700-1900</b>	Chateau

**6. Work Assignments:**  
 Implement Fire Suppression repair plan  
 Identify and document fire suppression repair needs.

**7. Special Instructions:**

8. Communications							
Name	Ch	Function	Rx Freq	Rx Tone	Tx Freq	Tx Tone	Notes
CDF C11	2	COMMAND	151.1675	103.5 (T8)	159.3975	151.4 (T14)	SCOUT PEAK TAHOE BASIN FSR GROUP EAST
CDF T28	9	TACTICAL	151.1825	192.8 (T16)	151.1825	192.8 (T16)	Tactical
A/G TAC 2	14	AIR TO GROUND	169.2875		169.2875		A/G TAC SECONDARY
CALCORD	15	MEDICAL	156.0750	156.7 (T6)	156.0750	156.7 (T6)	EMS COORDINATION ONLY
GUARD 16	16	EMERGENCY	168.6250		168.6250	110.9 (T1)	EMERGENCY USE ONLY

<b>9. Prepared by: Name:</b>	N. Pimlott	RESL	24 Hr Shift: 0
	Signature:		12 Hr Shift: 16
<b>ICS 204</b>	Date/Time: 9/18/2021 2200		Total: 16







