

Monday

INCIDENT ACTION PLAN

CALDOR INCIDENT

CA-ENF-024030
P5N8GM21



Maps, IAP, Virtual Briefing



OPERATIONAL PERIOD

9/20/2021 0700
 to
9/21/2021 0700

INCIDENT OBJECTIVES (ICS 202)

1. Incident Name: <p style="text-align: center;">CALDOR</p>	2. Operational Period:	Date From: 9/20/2021	Date To: 9/21/2021
		Time From: 0700	Time To: 0700

3. Objective(s):

Leaders Intent:
 Work effectively with cooperative partners towards a common goal of protecting values in a safe and efficient manner. All incident assigned personnel should be prepared to take appropriate actions regarding:

- Personal safety and safety of others, including driving slowly, safely, and defensively while implementing tactics that offer a high probability of success.
- Professional conduct and timely / effective communications.
- Manage fatigue by taking breaks and maintaining work rest guidelines.
- All line supervision personnel, including crew leaders and strike team leaders, must attend Operational Briefings.

Management Objectives:

- Provide for emergency personnel and public safety at all times.
- Ensure COVID-19 precautions and best practices are met at all times.
- Protect property, improvements, and infrastructure.
- Ensure accurate coordinated, timely and accurate release of public information.
- Foster and maintain relationships with all cooperators and stakeholders.
- Protect economic, natural, cultural and heritage resources.
- Mitigate or eliminate environmental resource impacts as a result of fire suppression efforts.
- Maintain fiscal accountability and keep costs commensurate with values at risk.

Control Objectives:

- Keep the fire within its currently identified perimeter and north of Highway 4 to Highway 88.
- Keep the fire within its currently identified perimeter and south of Wentworth Springs Rd, to Mosquito Pass, and road systems N16A, N20A, N08, and N21.
- Keep the fire within its currently identified perimeter and east of County Highway E16 and Fiddletown.
- Keep the fire within its currently identified perimeter and west of the El Dorado County, Alpine County and State Line boundary.

COVID Mitigations:

- All persons must wear a mask indoors at all times regardless of vaccination status, as well as outdoors when physical distancing cannot be maintained.
- Maintain a module as one, wash your hands and sanitize surfaces.

5. Site Safety Plan Required? No

Approved Site Safety Plan(s) Located at:

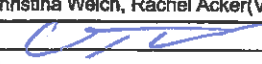
6. Incident Action Plan

<input checked="" type="checkbox"/> ICS 203	<input checked="" type="checkbox"/> ICS 215A	<input type="checkbox"/> ICS 205 A	<input type="checkbox"/>
<input checked="" type="checkbox"/> ICS 204	<input checked="" type="checkbox"/> ICS 220	<input checked="" type="checkbox"/> Training Message	<input type="checkbox"/>
<input checked="" type="checkbox"/> ICS 205	<input type="checkbox"/> Facility Maps	<input checked="" type="checkbox"/> Travel Map	<input type="checkbox"/>
<input checked="" type="checkbox"/> ICS 206	<input checked="" type="checkbox"/> Weather Forecast	<input checked="" type="checkbox"/> Demob Plan	<input type="checkbox"/> County Health Message
<input checked="" type="checkbox"/> ICS 208	<input checked="" type="checkbox"/> Fire Behavior	<input checked="" type="checkbox"/> Finance Message	<input checked="" type="checkbox"/> ICS 214

7. Prepared By: Greg White **Position/Title:** PSC2 (T) **Signature:**

8. Approved by Incident Commander: Mike Nobles **Signature:**

ORGANIZATION ASSIGNMENT LIST (ICS 203)

1. Incident Name: CALDOR		2. Operational Period: Date From: 9/20/2021 Time From: 0700		Date To: 9/21/2021 Time To: 0700	
3. Incident Commander(s) and Command Staff:			7. Operation Section:		
IC	Mike Nobles, James Aragon(T)		Operations	Jim Snow, Mike Page(T)	
Deputy IC			Deputy Ops	Al Ward, Chris StPierre(T)	
Safety Officer	Paul Tompkins, Mike Seymour(T), Trenton Prins(T)		Night Operations	Mike Koontz, Luis Gomez(T)	
Information Officer	Seneca Smith, DeLyn Sieliet(T)				
Liaison Officer	Don Smith(T), Alan Taylor(T), Ryan Toby (T)		Branch	I	Robert Szczepanek
4. Agency/Organization Representatives:			Division/Group	G / T / W	Kevin Reese, Kevin Dejong(T), Charles Zimmerman(T)
Agency/Organization	Name		Division/Group	Suppression Repair	Ryan Waggoner
El Dorado NF - AA	Jeff Marsolais		Division/Group		
El Dorado NF - AA Rep.	Scot Rogers		Division/Group		
Lake Tahoe BMU - AA	Gwen Sanchez, Judy Palmer		Division/Group		
Humboldt Toiyabe NF - AA	Jon Stansfield		Branch	III	John Owings
CalFIRE Arep	Mike Blankenheim		Division/Group	I / M	Jason Flores
CalOES	Dave Stone, Kit Bailey		Division/Group	O / P	Rob Noxon
El Dorado SO	Deputy Greg Almos		Division/Group	Q	Kristian Litz, Andy Wordin(T)
Sierra Pacific Ind.	Tim Tate		Division/Group	R	Aaron Schumacher
PG&E	Mike Webb		Division/Group	Suppression Repair	Rob Bertolina
Amador County SO	LT. Jason Navarre		Branch	Night	TBD
CHP	LT. Rick Hatfield		Division/Group	Night	TBD
Cal Trans	Greg Duffy		Division/Group		
AT&T	Kevan Young		Division/Group		
BLM	Jerry Martinez		Division/Group		
El Dorado Irrigation	Dan Corcoran		Division/Group		
East Fork FPD	Larry Goss		Branch	Strategic Planning	Greg Overacker, JT Sohr
COVID Advisor	Greg Flory, Ben Gray		Division/Group		
5. Planning Section:			Division/Group		
Chief	Steve Anderson, Greg White(T)		Division/Group		
Deputy	Ken Bates		Division/Group		
Resource Unit	Mike Yeun, Chris Adams, Derek Acosta(T)		Division/Group		
Situation Unit	Matt Snyder, Ray Rook(T), John Harner (V)		Branch		
Documentation Unit	Nancy Nordensten(T)(V-RIST)		Division/Group		
Demobilization Unit	Jan Grisedale		Division/Group		
GISS	Rene Gonzalez		Division/Group		
FBAN	Dan O'Connor		Division/Group		
IMET	Patrick Gilchrist		Division/Group		
Human Resources	Adrian Escobedo		Air Operations Branch		Director: JoAnn Overacker
Lead READ	Emma Williams, Jennifer House		Air Support Group Supervisor		Rex Sundstrom(T)
6. Logistics Section			Air Tactical Group Supervisor		Todd White
Chief	Scott Ashbach		Helibase Manager		Cammie Roy, Scott Magargee(T)
Supply Unit	Ruben Lopez(T)		8. Finance/Administration Section:		
Facilities Unit	Art Curley, Wendell Simmons(T)		Chief	Lisa Wilson(V)	
Ground Support Unit	Rickey Tootle, Chris Syler		Time Unit	Rebecca Lang(T)	
Communications Unit	Mike Greene		Cost Unit		
Medical Unit	Brandon Bennewate, Nic Stepanian		Comp/Claims Unit	Roger Waters, Tracy Nicholson (V)	
ITSS	Brett Davidson		PTRC		
FOOD	Mikeal Gates		EQTR	Cara Scott, Christina Welch, Rachel Acker(V), Katina Bryant(V)	
Prepared By: Name:	Greg White	Position/Title:	PSC2 (T)	Signature:	
ICS 203		Date/Time:	9/19/2021 2300 hours		



INCIDENT WEATHER FORECAST



FORECAST NO: 33
 PREDICTION FOR: 24 Hour Shift
 SHIFT DATE: 09/20/21
 FORECAST ISSUED: 09/19/21 1840

NAME OF FIRE: Caldor
 UNIT: USFS El Dorado NF
 SIGNED: Patrick Gilchrist
 Incident Meteorologist

WEATHER DISCUSSION: Warm and dry downslope east-northeast winds will continue today, as upper ridging builds back into the High Sierra. Humidity recovery will be poor to moderate tonight over the west side thanks to continued east-northeast winds. Tuesday will see the upper ridge axis push to the east, resulting in a lighter southwest surface flow developing by midday. Wednesday will see another dry weather disturbance pushing through, resulting in increased winds.

.....RED FLAG WARNING WEST OF THE SIERRA CREST THROUGH 1100 TUESDAY...

.TODAY...

Sky/weather.....Sunny.
 Max temperature...63 to 74 above 5000 feet and 74 to 82 below 5000 feet.
 Min humidity.....17 to 25% above 5000 feet and 13 to 18% below 5000 feet.
 Wind (20 ft).....
 Slope/valley.....East-northeast 15 to 20 mph, with gusts to 30 mph.
 Ridgetop.....East-northeast 15 to 20 mph, with gusts to 30 mph.
 Mixing height.....Increasing to 3,000 ft AGL mid-afternoon.

.TONIGHT...

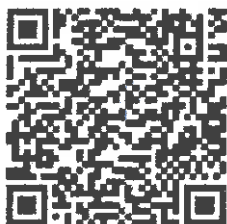
Sky/weather.....Mostly clear.
 Min temperature....43 to 55 west of the Sierra Crest. (Low 30s valleys east of the crest.)
 Max humidity.....30-40%
 Wind (20 ft).....
 Slope/valley.....East-northeast 12 to 18 MPH...gusts to 25 MPH.
 Ridgetop.....East-northeast 12 to 18 MPH...gusts to 25 MPH.

.TUESDAY...

Sky/weather: Sunny.
 Max temperature....66 to 77 above 5000 feet and 77 to 85 below 5000 feet.
 Min humidity.....19 to 24% above 5000 feet and 16 to 21% below 5000 feet.
 Wind (20 ft).....
 Slope/Valley.....East-northeast 10-15 mph becoming southwest 8-12 mph late in the morning.
 Ridgetop.....East-northeast 12-17 mph, becoming southwest late in the morning.
 Mixing height... increasing to 5000 ft AGL mid-afternoon.

Incident Weather Station Data – SCAN Code with Smart Phone
 Branch I

Branch III



FIRE BEHAVIOR FORECAST

FORECAST NUMBER: 4	TYPE OF FIRE: Vegetation
FIRE NAME: Caldor	OPERATIONAL PERIOD: Sept 20 th 24 Hour
DATE ISSUED: Sept 19 th	TIME ISSUED: 2000
UNIT: CA El Dorado National Forest/Lake Tahoe Basin Management Unit	SIGNED: Dan O'Connor Fire Behavior Analyst (FBAN)

WEATHER SUMMARY: See detailed Fire Weather Forecast in IAP

FUELS:

Fire areas include a range of conifer systems with Ponderosa, Jeffrey Pine, Incense Cedar, and manzanita in the lower elevations towards the west, transitioning up into an Upper Montane forest of Ponderosa, Lodgepole Pine and Red Fir closer to Lake Tahoe. Anticipate heavy fuel loading, drought stress, overstocked timber stands, and a lack of fire history to both the north and south of the current fire footprint. The El Dorado National Forest is currently classified as 'Extreme to Exceptional' drought by the US Drought Monitor, with Energy Release Components exceeding the 90th percentile, not far off all time high levels. Heavy dead and down fuels will likely burn completely, holding heat and actively consuming through all hours of the day. Fine dead fuel moisture is calculated at 4% or less.

EXPECTED FIRE BEHAVIOR: *Based on the Warmest, Driest, Windiest Conditions Forecasted*

Maximum Spotting Distance ¾ mile Probability of Ignition 73%	Fuel Type/Model	Maximum Rate of Spread (chains/hour)	Maximum Flame Length (feet)
	Timber understory (TU5-Overstocked and/or dense reprod)	Head 35-40 ch/hr Flank 20-35 ch/hr	Head 13-15 ft Flank 8-10 ft
	Timber litter (TL6-closed canopy, ground fuels)	Head 5-7 ch/hr Flank 2-4 ch/hr	Head 2-4 ft Flank 1-3 ft

General: Red Flag Warning in effect through Tuesday at 1100. New wind direction, with dry gusty winds from the NE that will increase in speed the further west you are on the fire area. Again the primary spread model is torching/spotting, so any fire that is able to elevate into the canopies has the potential to loft embers and create spot fires outside current containment lines.

SPECIFIC

Branch 1 Division Alpha/Tango/Whiskey will likely experience the strongest NE winds today, with the first testing we've had from winds out of the East. Although fire hasn't been active in these Divisions in quite some time, drought conditions are still holding heat so the potential for an isolated torching tree to bring the fire back to life is real today. Low probability due to all the good work from ground crews, but high consequence area for spotting outside lines.

Branch 3

Divisions India and Mike also have weaknesses with stubborn interior heat and will be tested by the new wind direction today. Communities along the Highway 50 corridor are another low probability/high consequence area if stubborn heat sources are able to find a path into the crowns with dry, easterly winds in the river corridor. Be especially heads up for ground fire to elevate into crowns, brining challenging spread conditions with torching and spotting.

Divisions Quebec and Romeo have widespread scattered heat along the fire edge and will be tested with the new wind direction from the NE. Winds should be mostly favorable to push spotting further into the gator's mouth but the lower jaw could have spotting jump southern containment lines.

Divisions Oscar and Papa do have high severity fire areas in the interior, but the edges are more mosaic severity so reburning and flare ups with threats to containment lines and adjacent communities are still possible. Heads up for areas that had been blocked by the SW winds to react to dry NE flow today.

Night Operations: With NE winds concern areas for spotting and challenges to containment lines will continue in Branch 1 as well as the unburned islands of the Highway 50 corridor. Potential for reburn in the dirty burn areas due to drought conditions.

AIR OPERATIONS:

Potential turbulent winds may limit ability for aircraft to support missions again today.

SAFETY:

Red Flag Warning for NE winds will bring testing that the fire has not experienced so far.

SAFETY MESSAGE

Caldor Fire CA-ENF- 024030

Date/Op Period: 9/20 -21/21 Day/Night Shift

Transportation issues:

- HWY 50, Will be opening in a tiered level within a 24hr period. Monday traffic will be for residence and commerce. 0800 Tuesday the highway will open to all traffic. If you are traveling these roadways, travel them with caution as traveler's attention will be looking at the fire and its effects, and less on the road way.
- HWY 50, drive the speed limit, focus on the road. Many automobile accidents occur due to driving distractions. Such distractions as listening to radios, talking on cell phones, chatting with passengers, and being angry behind the wheel. All of those factors cause thousands of people each year to crash.

Fireline:

- Green islands continue to put up a few smokes, determine appropriate response based on their threat to containment lines. Most islands are well within the interior of the fire. As the wind blows the needles and leaves off the trees, if there are still hot spots, there is a re-burn potential.
- Don't be complacent to the potential of isolated areas of the fire coming back to life and becoming active with fire again. Have a plan before attacking.
- Utilize traffic control where fallers are dropping trees, wait for fallers to give the "All Clear". Manage your work area. Keep clear if no need for you to be there.
- Suppression repair continues around the fire. Continue to provide safe working area around excavators, and masticators. Masticators can throw debris for very long distances, get with each operator and determine safe working "stay back zone" for each piece of equipment.

USE LOOKOUTS, COMMUNICATIONS, ESCAPE ROUTES, SAFETY ZONE
LCES In Place Every Time

Prepared by: Mike Seymour Safety Officer Date: 9/19/21

ASSIGNMENT LIST (ICS 204 WF)

CONTROLLED UNCLASSIFIED
INFORMATION/BASIC

1. Incident Name: <p style="text-align: center;">CALDOR</p>	2. Operational Period: Date From: 09/20/21 Date To: 09/21/21 Time From: 0700 Time To: 0700	3. Branch Division <p style="text-align: center;">I G / T / W</p>
--	---	---

4. Operations Personnel:		Page 1 of 1
Operations Section Chief: Jim Snow, Mike Page(T) Branch Director: Robert Szczepanek Division/Group Supervisor: Kevin Reese, Kevin Dejong(T), Charles Zimmerman	Night Ops: Mike Koontz, Luis Gomez(T) Deputy Ops: Al Ward, Chris StPierre(T) Air Attack:	

5. Resources Assigned:		** Resources Below in Bold are 12 Hour **					
Resource Identifier	ALS	LWD	Leader	Personnel	Request #	Hours	Reporting Location
ENG3 CO-PIAX 33		9/20		3	E-21263	0700-1900	8 Mile Camp
ENG3 NV-B5331		9/30	ARROYO	4	E-50207	0700-1900	8 Mile Camp
ENG3 ROCKY MTN		9/30	STREHLE	3	E-50206	0700-1900	8 Mile Camp
ENG4 HEART VENTURES		9/30	WETZEL	3	E-50193	0700-1900	8 Mile Camp
ENG6 CIF 671		9/26		3	E-21280	0700-1900	8 Mile Camp
ENG6 WHITEGRASS FIRE		9/30	WHITEGRASS	3	E-50266	0700-1900	8 Mile Camp
ENG6 GOODING		9/30	MCKINNEY	2	E-50199	0700-1900	8 Mile Camp
ENG6 RED DOG		9/30	ENGLAND	3	E-50205	0700-1900	8 Mile Camp
WTT2 AWB		9/30	KEENE	2	E-20009	0700-1900	8 Mile Camp
WTS3 AZ-PTP		10/2	FINCH	2	E-50242	0700-1900	8 Mile Camp
SKD SOFT TRACK ATTACK		10/4	EMERY	1	E-246	0700-1900	8 Mile Camp
SOFR BARNHART		9/25	BARNHART	1	O-20796	0700-1900	8 Mile Camp
SOFR KAMNIKAR		9/24	KAMINKAR	1	O-20794	0700-1900	8 Mile Camp
EMPF DIEM	X	9/30	DIEM	1	O-50312	0700-1900	8 Mile Camp
EMPF STAPLES	X	9/22	STAPLES	1	E-50129	0700-1900	8 Mile Camp
EMPF HANNA	X	9/22	HANNA	1	E-50129	0700-1900	8 Mile Camp
EMTF MAKEMSON		9/30	MAKEMSON	1	O-50317	0700-1900	8 Mile Camp

6. Work Assignments:
 TASK: Secure existing line and provide for tactical patrol within the Hwy 50 corridor. Mop up to the extent necessary on the fires edge and within the perimeter where infrastructure and values at risk are present
 PURPOSE: Minimize any fire progression and ensure the safety of those working on the west side of Mormon Emigrant Trail
 END STATE: Fires edge in the division is controlled and escape is improbable

7. Special Instructions:
 Backhaul trash, excess supplies and provide a location for accountable property
 Identify and coordinate the removal of hazard trees
 Resources denoted with * is identified as I/A resources within the TFR
 Resources need to report to 8 Mile Camp (4260 8 Mile Rd, Camino, CA 95709) for briefing and end of shift

8. Communications							
Name	Ch	Function	Rx Freq	Rx Tone	Tx Freq	Tx Tone	Notes
COMMAND SEE ICS 205	1	COMMAND					
NIFC T1	8	TACTICAL	168.0500N		168.0500N		
A/G CMD	14	A/G CMD	167.9500N		167.9500N		
CALCORD	15	COORDINATION	156.0750N	156.7	156.0750N	156.7	
GUARD 16	16	EMERGENCY	168.6250N		168.6250N	110.9	

9. Prepared by: Name:	Mike Yeun, Chris Adams, Derek Acosta(T)	RESL	Signature:
ICS 204	Date/Time: 9/19/2021 2200	Personnel Count: 35	

ASSIGNMENT LIST (ICS 204 WF)

CONTROLLED UNCLASSIFIED
INFORMATION/BASIC

1. Incident Name: <p style="text-align: center; font-weight: bold;">CALDOR</p>		2. Operational Period: Date From: 09/20/21 Date To: 09/21/21 Time From: 0700 Time To: 0700				3. Branch Division <p style="text-align: center; font-weight: bold;">1 Suppression Repair</p>	
4. Operations Personnel:		Page 1 of 4					
Operations Section Chief: Jim Snow, Mike Page(T) Branch Director: Robert Szczepanek Division/Group Supervisor: Ryan Waggoner				Night Ops: Mike Koontz, Luis Gomez(T) Deputy Ops: Al Ward, Chris StPierre(T) Air Attack: Todd White			
5. Resources Assigned:		** Resources Below In Bold are 12 Hour **					
Resource Identifier	ALS	LWD	Leader	Personnel	Request #	Hours	Reporting Location
TFLD LOWELL		9/29	LOWELL	1	O-568	0700-1900	8 Mile Camp
TFLD(T) GRAY		9/30	GRAY	1	O-50160	0700-1900	8 Mile Camp
HEQB SMITH		9/27	SMITH	1	O-562	0700-1900	8 Mile Camp
GROUP #1 MET							
FEL1 SIERRA NEVADA		9/30	D. WASS	1	E-699	0700-1900	8 Mile Camp
EXCA2 LONESTAR ENT		9/30	MILLER	2	E-50231	0700-1900	8 Mile Camp
SKD SIERRA FOREST 2		9/30	J. WASS	1	E-705	0700-1900	8 Mile Camp
SKD SIERRA FOREST 3		9/30	DUARTE	1	E-706	0700-1900	8 Mile Camp
LOAD SIERRA NEVADA 2		9/30	DIBBLE	1	E-50173	0700-1900	8 Mile Camp
PROC PATHFINDER		9/30	FULTON	1	E-730	0700-1900	8 Mile Camp
FAL1 HERREN		9/22	HERREN	2	O-532	0700-1900	8 Mile Camp
GROUP #2 MET							
FEL1 PATHFINDER		9/30	SMITH	2	E-702	0700-1900	8 Mile Camp
SKD SIERRA FOREST 1		9/30	MARTIN	1	E-704	0700-1900	8 Mile Camp
LOAD SIERRA NEVADA 1		9/30	STANDBRIDGE	1	E-50172	0700-1900	8 Mile Camp
SKD SIERRA FOREST 5		9/30	MARVIN	1	E-708	0700-1900	8 Mile Camp
LOAD ROMINE TIMBER 2				1	E-725	0700-1900	8 Mile Camp
FALM SKYLAKE		9/29	HAGINS	2	O-20480	0700-1900	8 Mile Camp
6. Work Assignments:							
TASK: Perform priority suppression repair work within Branch 1. Repair Wrights Lake Road and Hazard Tree Removal along Mormon Emigrant Trail and Sierra @ Tahoe. Coordinate closely with CALFIRE AEU and USFS REAFs to ensure work is efficiently managed							
PURPOSE: Minimize any near-term environmental resource impacts as a result of fire suppression efforts							
END STATE: Watershed and areas adjacent to values at risk are protected using the approved standard							
7. Special Instructions:							
Backhaul trash, excess supplies and provide a location for accountable property							
Identify and coordinate the removal of hazard trees							
Resources denoted with * is identified as I/A resources within the TFR							
Resources need to report to 8 Mile Camp (4260 8 Mile Rd, Camino, CA 95709) for briefing and end of shift							
8. Communications							
Name	Ch	Function	Rx Freq	Rx Tone	Tx Freq	Tx Tone	Notes
COMMAND SEE ICS 205	1	COMMAND					
NIFC T6	9	TACTICAL	166.7750N		166.7750N		
A/G CMD	14	A/G CMD	167.9500N		167.9500N		
CALCORD	15	COORDINATION	156.0750N	156.7	156.0750N	156.7	
GUARD 16	16	EMERGENCY	168.6250N		168.6250N	110.9	
9. Prepared by: Name:		Mike Yeun, Chris Adams, Derek Acosta(T)		RESL		Signature:	
ICS 204		Date/Time: 9/19/2021 2200		Personnel Count: 20			

ASSIGNMENT LIST (ICS 204 WF)

CONTROLLED UNCLASSIFIED
INFORMATION//BASIC

1. Incident Name: <p style="text-align: center; font-size: 1.2em;">CALDOR</p>		2. Operational Period: Date From: 09/20/21 Date To: 09/21/21 Time From: 0700 Time To: 0700				3. Branch Division <p style="text-align: center; font-size: 1.2em;">1 Suppression Repair</p>	
4. Operations Personnel: Operations Section Chief: Jim Snow, Mike Page(T) Branch Director: Robert Szczepanek Division/Group Supervisor: Ryan Waggoner		Night Ops: Mike Koontz, Luis Gomez(T) Deputy Ops: Al Ward, Chris StPierre(T) Air Attack: Todd White					
5. Resources Assigned:		** Resources Below in Bold are 12 Hour **					
Resource Identifier	ALS	LWD	Leader	Personnel	Request #	Hours	Reporting Location
GROUP #3 GRINDING							
GRND ARBORWORKS		9/30	MEALIN	1	E-731	0700-1900	8 Mile Camp
LOAD BAMFORD 1		9/29	MONTGOMERY	1	E-720	0700-1900	8 Mile Camp
LOAD SIERRA FOREST		9/30	LANGLEY	1	E-50159	0700-1900	8 Mile Camp
LOAD BAMFORD 3		9/29	MONTGOMERY	1	E-723	0700-1900	8 Mile Camp
GROUP #4 SKI RESORT							
TFLD(T) WARD			WARD	1	O-545	0700-1900	8 Mile Camp
FEL2 J&R LOGGING		9/30	JIMENEZ	1	E-50151	0700-1900	8 Mile Camp
PROC J&R LOGGING		9/30	JIMENEZ	1	E-50150	0700-1900	8 Mile Camp
SKD SIERRA FOREST 4		9/30	CAMPBELL	1	E-707	0700-1900	8 Mile Camp
SKD J&R LOGGING		10/1	JIMENEZ	1	E-712	0700-1900	8 Mile Camp
SKD T1 CECIL LOGGING		9/29	HUNTER	1	E-50153	0700-1900	8 Mile Camp
LOAD BAMFORD 2		9/29	MONTGOMERY	1	E-721	0700-1900	8 Mile Camp
6. Work Assignments: TASK: Perform priority suppression repair work within Branch 1. Repair Wrights Lake Road and Hazard Tree Removal along Mormon Emigrant Trail and Sierra @ Tahoe. Coordinate closely with CALFIRE AEU and USFS REAFs to ensure work is efficiently managed PURPOSE: Minimize any near-term environmental resource impacts as a result of fire suppression efforts END STATE: Watershed and areas adjacent to values at risk are protected using the approved standard							
7. Special Instructions: Backhaul trash, excess supplies and provide a location for accountable property Identify and coordinate the removal of hazard trees Resources denoted with * is identified as I/A resources within the TFR ***Resources need to report to 8 Mile Camp (4260 8 Mile Rd, Camino, CA 95709) for briefing and end of shift***							
8. Communications							
Name	Ch	Function	Rx Freq	Rx Tone	Tx Freq	Tx Tone	Notes
COMMAND SEE ICS 205	1	COMMAND					
NIFC T6	9	TACTICAL	166.7750N		166.7750N		
A/G CMD	14	A/G CMD	167.9500N		167.9500N		
CALCORD	15	COORDINATION	156.0750N	156.7	156.0750N	156.7	
GUARD 16	16	EMERGENCY	168.6250N		168.6250N	110.9	
9. Prepared by: Name:		Mike Yeun, Chris Adams, Derek Acosta(T)		RESL	Signature:		
ICS 204	Date/Time: 9/19/2021 2200		Personnel Count: 11				

ASSIGNMENT LIST (ICS 204 WF)

CONTROLLED UNCLASSIFIED
INFORMATION/BASIC

1. Incident Name: CALDOR	2. Operational Period: Date From: 09/20/21 Date To: 09/21/21 Time From: 0700 Time To: 0700	3. Branch 1	Division Suppression Repair
---	---	------------------------------	--

4. Operations Personnel: Operations Section Chief: Jim Snow, Mike Page(T) Branch Director: Robert Szczepanek Division/Group Supervisor: Ryan Waggoner		Night Ops: Mike Koontz, Luis Gomez(T) Deputy Ops: Al Ward, Chris StPierre(T) Air Attack:
---	--	--

Page 3 of 4

5. Resources Assigned:		** Resources Below in Bold are 12 Hour **					Hours	Reporting Location
Resource Identifier	ALS	LWD	Leader	Personnel	Request #			
GROUP #5 WRIGHTS LAKE								
HEQB(T) GOTTS			GOTTS	1	O-541	0700-1900	8 Mile Camp	
HEQB(T) APACHITO			APACHITO	1	O-550	0700-1900	8 Mile Camp	
EXCA INGRAM		9/24	WHEELER	1	E-50155	0700-1900	8 Mile Camp	
MAST BRUCE YOUNG			YOUNG	1	E-241	0700-1900	8 Mile Camp	
* DOZ2 ENF 3		9/21	STARK	3	E-200	0700-1900	8 Mile Camp	
DOZ2 HERTZIG		9/27	HERTZIG	1	E-101	0700-1900	8 Mile Camp	
DOZ3 TOM'S EARTHMOVING		9/30	FUNES	2	E-50239	0700-1900	8 Mile Camp	
* EXCA ENF 7462		9/26	LANGENDERFER	1	E-728	0700-1900	8 Mile Camp	
EXCA VENTANA RANCH		9/25	LOVERTON	1	E-689	0700-1900	8 Mile Camp	
EXCA EMERSON		9/25	SHERRILL	1	E-50154	0700-1900	8 Mile Camp	
FMOD A&F ENTERPRISES		9/27	BAFFORD	2	O-234	0700-1900	8 Mile Camp	

6. Work Assignments:
TASK: Perform priority suppression repair work within Branch 1. Repair Wrights Lake Road and Hazard Tree Removal along Mormon Emigrant Trail and Sierra @ Tahoe. Coordinate closely with CALFIRE AEU and USFS REAFs to ensure work is efficiently managed
PURPOSE: Minimize any near-term environmental resource impacts as a result of fire suppression efforts
END STATE: Watershed and areas adjacent to values at risk are protected using the approved standard

7. Special Instructions:
Backhaul trash, excess supplies and provide a location for accountable property
Identify and coordinate the removal of hazard trees
Resources denoted with * is identified as I/A resources within the TFR
Resources need to report to 8 Mile Camp (4260 8 Mile Rd, Camino, CA 95709) for briefing and end of shift

8. Communications							
Name	Ch	Function	Rx Freq	Rx Tone	Tx Freq	Tx Tone	Notes
COMMAND SEE ICS 205	1	COMMAND					
NIFC T6	9	TACTICAL	166.7750N		166.7750N		
A/G CMD	14	A/G CMD	167.9500N		167.9500N		
CALCORD	15	COORDINATION	156.0750N	156.7	156.0750N	156.7	
GUARD 16	16	EMERGENCY	168.6250N		168.6250N	110.9	

9. Prepared by: Name: Mike Yeun, Chris Adams, Derek Acosta(T)	RESL	Signature: 
---	------	--

ICS 204	Date/Time: 9/19/2021 2200	Personnel Count: 15
---------	---------------------------	---------------------

ASSIGNMENT LIST (ICS 204 WF)

CONTROLLED UNCLASSIFIED
INFORMATION/BASIC

1. Incident Name: CALDOR	2. Operational Period: Date From: 09/20/21 Date To: 09/21/21 Time From: 0700 Time To: 0700	3. Branch Division 1 Suppression Repair
---	---	--

Page 4 of 4

4. Operations Personnel: Operations Section Chief: Jim Snow, Mike Page(T) Branch Director: Robert Szczepanek Division/Group Supervisor: Ryan Waggoner	Night Ops: Mike Koontz, Luis Gomez(T) Deputy Ops: Al Ward, Chris StPierre(T) Air Attack:
--	--

5. Resources Assigned:		** Resources Below In Bold are 12 Hour **					
Resource Identifier	ALS	LWD	Leader	Personnel	Request #	Hours	Reporting Location
GROUP #6 WOOD MOVERS							
TFLD HUMBACH			HUMBACH	1	O-566	0700-1900	8 Mile Camp
TFLD(T) BERKE			BERKE	1	O-576	0700-1900	8 Mile Camp
HC2 MOUNTAINEER MT2		9/26	WENCESLAO	20	C-50043	0700-1900	8 Mile Camp
CHIP WOOD CHUCK		9/25	TINGLER	1	E-50174	0700-1900	8 Mile Camp
LOG TRK VOLCANO CREEK			ELLIOT	1	E-50156	0700-1900	8 Mile Camp
LOG TRK ARBORWORKS		9/27	YOUNGREN	1	E-50157	0700-1900	8 Mile Camp
LOG RIDGE LOGGING		9/30	SLACK	1	E-737	0700-1900	8 Mile Camp
LOG HEAVYHAUL		9/30	LESLIE	1	E-738	0700-1900	8 Mile Camp
EXCA WEST WOOD		9/26	WEST	2	E-232	0700-1900	8 Mile Camp
EXCA COTTONWOOD		9/29	HARTLEY	2	E-687	0700-1900	8 Mile Camp
MAST CLAYTON		9/30	TITTLE	2	E-50228	0700-1900	8 Mile Camp
WTS1 ASAP		10/2	DIXON	2	E-20015	0700-1900	8 Mile Camp
MAST PVT (E-58)			FINDLETON	1	E-58	0700-1900	8 Mile Camp
EXCA HEAVYHAUL		9/29	LESLIE	2	E-50226	0700-1900	8 Mile Camp
SKD T1 FORKNER		9/25	DIAL	2	E-50152	0700-1900	8 Mile Camp
LOAD ROMINE TIMBER 1				1	E-724	0700-1900	8 Mile Camp
SKD DC FIRE		10/2	MARTIN	2	E-247	0700-1900	8 Mile Camp

6. Work Assignments:
 TASK: Perform priority suppression repair work within Branch 1. Repair Wrights Lake Road and Hazard Tree Removal along Mormon Emigrant Trail and Sierra @ Tahoe. Coordinate closely with CALFIRE AEU and USFS REAFs to ensure work is efficiently managed
 PURPOSE: Minimize any near-term environmental resource impacts as a result of fire suppression efforts
 END STATE: Watershed and areas adjacent to values at risk are protected using the approved standard

7. Special Instructions:
 Backhaul trash, excess supplies and provide a location for accountable property
 Identify and coordinate the removal of hazard trees
 Resources denoted with * is identified as I/A resources within the TFR
 Resources need to report to 8 Mile Camp (4260 8 Mile Rd, Camino, CA 95709) for briefing and end of shift

8. Communications

Name	Ch	Function	Rx Freq	Rx Tone	Tx Freq	Tx Tone	Notes
COMMAND SEE ICS 205	1	COMMAND					
NIFC T6	9	TACTICAL	166.7750N		166.7750N		
A/G CMD	14	A/G CMD	167.9500N		167.9500N		
CALCORD	15	COORDINATION	156.0750N	156.7	156.0750N	156.7	
GUARD 16	16	EMERGENCY	168.6250N		168.6250N	110.9	

9. Prepared by: Name:	Mike Yeun, Chris Adams, Derek Acosta(T)	RESL	Signature:
ICS 204	Date/Time: 9/19/2021 2200	Personnel Count: 41	

ASSIGNMENT LIST (ICS 204 WF)

CONTROLLED UNCLASSIFIED
INFORMATION/BASIC

1. Incident Name:	2. Operational Period:	3. Branch	Division
CALDOR	Date From: 09/20/21 Date To: 09/21/21 Time From: 0700 Time To: 0700	III	I / M

4. Operations Personnel:		Page 1 of 2
Operations Section Chief: Jim Snow, Mike Page(T) Branch Director: John Owings Division/Group Supervisor: Jason Flores	Night Ops: Mike Koontz, Luis Gomez(T) Deputy Ops: Al Ward, Chris StPierre(T) Air Attack:	

5. Resources Assigned:	** Resources Below in Bold are 12 Hour **							
Resource Identifier	ALS	LWD	Leader	Personnel	Request #	Hours	Reporting Location	
WFM BLACK HILLS		9/24	DUEKEER	10	E-50208	0700-1900	HEAVENLY ICP	
SMOD NMCIF ACOMA 2		9/23	CARABAJAL	16	O-50194	0700-1900	HEAVENLY ICP	
ENG6 FLASHOVER		10/2	VINCENT	3	E-50209	0700-1900	HEAVENLY ICP	
T/F OES 6411T		9/21	HARRIS	20	E-20239	0700-1900	HEAVENLY ICP	
ENG3 CCD 3363		9/30	WILLIAMS	5	E-50196	0700-1900	HEAVENLY ICP	
ENG4 DUKE CITY 401		10/3	LAKE	3	E-50276	0700-1900	HEAVENLY ICP	
ENG3 HART 291		9/20	GATES	3	E-291	0700-1900	HEAVENLY ICP	
ENG3 DS FIRE SUPPRESSION		9/27	DAGNELL	3	E-50161	0700-1900	HEAVENLY ICP	
ENG3 NWS 1667		9/28	ARNDT	6	E-50177	0700-1900	HEAVENLY ICP	
ENG6 TX-TXF E641		9/27	UAL	4	E-466	0700-1900	HEAVENLY ICP	
WTS2 MARTIN		10/3	MARTIN	1	E-50241	0700-1900	HEAVENLY ICP	
WTS3 RAVEN FIRE LLC		10/2	GADSBY	1	E-50249	0700-1900	HEAVENLY ICP	
FAL1 CTL BLAIR		9/29	BLAIR	1	O-50346	0700-1900	HEAVENLY ICP	
FAL1 CTL ELDERD		9/29	ELDERD	1	O-50347	0700-1900	HEAVENLY ICP	
FAL1 CTL WHITE		9/29	WHITE	1	O-50348	0700-1900	HEAVENLY ICP	
FAL1 CTL GREEN		9/29	GREEN	1	O-50349	0700-1900	HEAVENLY ICP	
FAL1 CTL HOLLAND		9/29	HOLLAND	1	O-50350	0700-1900	HEAVENLY ICP	
SKD2 CTL FOREST MGMT		9/29	KREGOSKI	6	E-50188	0700-1900	HEAVENLY ICP	
LOAD CTL FOREST MGMT 1		9/29	KREGOSKI	6	E-50189	0700-1900	HEAVENLY ICP	
LOAD CTL FOREST MGMT 2		9/29	KREGOSKI	6	E-50187	0700-1900	HEAVENLY ICP	

6. Work Assignments:
 TASK: Secure existing line and continue to build fireline direct from Echo Lakes to H-3. Mop up to the extent necessary on the fires edge and provide for tactical patrol to the communities affected along Hwy 50
 PURPOSE: Minimize any fire progression and ensure the safety of those working north of Hwy 50
 END STATE: Fires edge in the division is controlled and escape is improbable

7. Special Instructions:
 Backhaul trash, excess supplies and provide a location for accountable property
 Identify and coordinate the removal of hazard trees
 Resources denoted with * is identified as I/A resources within the TFR
 Medic 60, ALS Ambulance for Highway 50 patrol
 Resources need to report to Heavenly ICP (3860 Saddle Rd., South Lake Tahoe, CA 96150) for briefing and end of shift

8. Communications

Name	Ch	Function	Rx Freq	Rx Tone	Tx Freq	Tx Tone	Notes
COMMAND SEE ICS 205	1	COMMAND					
NIFC T1	6	TACTICAL	168.0500N		168.0500N		
A/G CMD	14	A/G CMD	167.9500N		167.9500N		
CALCORD	15	COORDINATION	156.0750N	156.7	156.0750N	156.7	
GUARD 16	16	EMERGENCY	168.6250N		168.6250N	110.9	

9. Prepared by: Name: Mike Yeun, Chris Adams, Derek Acosta(T) RESL
 Signature:

ICS 204 Date/Time: 9/19/2021 2200 Personnel Count: 92

ASSIGNMENT LIST (ICS 204 WF)

CONTROLLED UNCLASSIFIED
INFORMATION/BASIC

1. Incident Name:	2. Operational Period:	3. Branch	Division
CALDOR	Date From: 09/20/21 Date To: 09/21/21 Time From: 0700 Time To: 0700	III	I / M

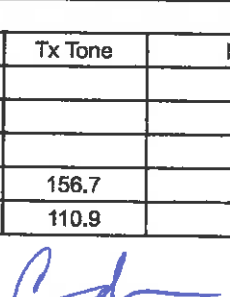
4. Operations Personnel:	Page 2 of 2
Operations Section Chief: Jim Snow, Mike Page(T) Branch Director: John Owings Division/Group Supervisor: Jason Flores	Night Ops: Mike Koontz, Luis Gomez(T) Deputy Ops: Al Ward, Chris StPierre(T) Air Attack:

5. Resources Assigned:		** Resources Below in Bold are 12 Hour **					
Resource Identifier	ALS	LWD	Leader	Personnel	Request #	Hours	Reporting Location
TFLD OOSAHWE		9/29	OOSAHWE	1	O-50290	0700-1900	HEAVENLY ICP
FMOD UNDERDOG 3		9/25	RILEY	2	O-50086	0700-1900	HEAVENLY ICP
SOF1 SAVAGE		9/20	SAVAGE	1	O-50053	0700-1900	HEAVENLY ICP
SOFR (T) CABANAS		10/3	CABANAS	1	O-50402	0700-1900	HEAVENLY ICP
EMPF CRUMPACKER	X	9/27	CRUMPACKER	1	O-50263	0700-1900	HEAVENLY ICP
EMTF FLANDERS		9/27	FLANDERS	1	O-50276	0700-1900	HEAVENLY ICP

6. Work Assignments:
 TASK: Secure existing line and continue to build fireline direct from Echo Lakes to H-3. Mop up to the extent necessary on the fires edge and provide for tactical patrol to the communities affected along Hwy 50
 PURPOSE: Minimize any fire progression and ensure the safety of those working north of Hwy 50
 END STATE: Fires edge in the division is controlled and escape is improbable

7. Special Instructions:
 Backhaul trash, excess supplies and provide a location for accountable property
 Identify and coordinate the removal of hazard trees
 Resources denoted with * is identified as I/A resources within the TFR
 Medic 60, ALS Ambulance for Highway 50 patrol
 Resources need to report to Heavenly ICP (3860 Saddle Rd., South Lake Tahoe, CA 96150) for briefing and end of shift

8. Communications							
Name	Ch	Function	Rx Freq	Rx Tone	Tx Freq	Tx Tone	Notes
COMMAND SEE ICS 205	1	COMMAND					
NIFC T1	6	TACTICAL	168.0500N		168.0500N		
A/G CMD	14	A/G CMD	167.9500N		167.9500N		
CALCORD	15	COORDINATION	156.0750N	156.7	156.0750N	156.7	
GUARD 16	16	EMERGENCY	168.6250N		168.6250N	110.9	

9. Prepared by: Name:	Mike Yeun, Chris Adams, Derek Acosta(T)	RESL	Signature: 
ICS 204	Date/Time: 9/19/2021 2200		Personnel Count: 7

ASSIGNMENT LIST (ICS 204 WF)

CONTROLLED UNCLASSIFIED
INFORMATION/BASIC

1. Incident Name:	2. Operational Period:	3. Branch	Division
CALDOR	Date From: 09/20/21 Date To: 09/21/21 Time From: 0700 Time To: 0700	III	O / P

4. Operations Personnel:		Page 1 of 1
Operations Section Chief: Jim Snow, Mike Page(T) Branch Director: John Owings Division/Group Supervisor: Rob Noxon	Night Ops: Mike Koontz, Luis Gomez(T) Deputy Ops Al Ward, Chris StPierre(T) Air Attack:	

5. Resources Assigned:		** Resources Below in Bold are 12 Hour **					
Resource Identifier	ALS	LWD	Leader	Personnel	Request #	Hours	Reporting Location
HC2IA SLIDE MOUNTAIN		9/26	HIGGINS	21	C-50049	0700-1900	HEAVENLY ICP
HC2 BIRRUETA REFORESTATION		10/1	BIRREUTA	20	C-50060	0700-1900	HEAVENLY ICP
* T/F BASIN		9/25	KING	10	E-50090	0700-1900	HEAVENLY ICP
* ENG3 TMU E341		9/29	KING	3	E-50090	0700-1900	HEAVENLY ICP
* ENG3 TMU E344		10/3	TBD	5	E-50274	0700-1900	HEAVENLY ICP
ENG3 B5121		10/2	BRANDEBURG	2	E-50268	0700-1900	HEAVENLY ICP
ENG3 MT-NWS 1262		9/30	WARD	3	E-50203	0700-1900	HEAVENLY ICP
ENG3 J3 CONTRACTING		9/30	WALLACE	3	E-50215	0700-1900	HEAVENLY ICP
ENG4 J3 CONSTRUCTION		9/25	STEENHUIZEN	3	E-21269	0700-1900	HEAVENLY ICP
ENG5 YABOY		9/28	BAWER	3	E-50178	0700-1900	HEAVENLY ICP
ENG6 E2628		9/30	SPARGO	2	E-50212	0700-1900	HEAVENLY ICP
FMOD NORTH ZONE FALLERS		10/1	NEALY	2	O-50341	0700-1900	HEAVENLY ICP
FMOD GREEN JR		10/1	GREEN	2	O-50343	0700-1900	HEAVENLY ICP
SOF2 MOYER		10/3	MOYER	1	O-50306	0700-1900	HEAVENLY ICP
EMPF POTTS	X	9/24	POTTS	1	O-20840	0700-1900	HEAVENLY ICP
EMPF SCHELIN	X	9/23	SCHELIN	1	O-20841	0700-1900	HEAVENLY ICP
EMPF BEVERIDGE	X	9/21	BEVERIDGE	1	O-20372	0700-1900	HEAVENLY ICP
CARE AMBULANCE 527		10/3	PRICE/TRASK	2	E-20628	0700-1900	HEAVENLY ICP

6. Work Assignments:
 TASK: Provide for a tactical patrol and respond to any calls for service.
 Mop up to the extent necessary on the fires edge and within the perimeter where infrastructure and values at risk are present.
 PURPOSE: Minimize any fire progression, keeping the fire within its current footprint
 END STATE: Fires edge in the division is controlled and escape is improbable

7. Special Instructions:
 Backhaul trash, excess supplies and provide a location for accountable property
 Identify and coordinate the removal of hazard trees
 Resources denoted with * is identified as I/A resources within the TFR
 Resources need to report to Heavenly ICP (3860 Saddle Rd., South Lake Tahoe, CA 96150) for briefing and end of shift

8. Communications

Name	Ch	Function	Rx Freq	Rx Tone	Tx Freq	Tx Tone	Notes
COMMAND SEE ICS 205	1	COMMAND					
NIFC T8	7	TACTICAL	166.7750N		166.7750N		
A/G CMD	14	A/G CMD	167.9500N		167.9500N		
CALCORD	15	COORDINATION	156.0750N	156.7	156.0750N	156.7	
GUARD 16	16	EMERGENCY	168.6250N		168.6250N	110.9	

9. Prepared by: Name: Mike Yeun, Chris Adams, Derek Acosta(T) RESL
 Signature:

ICS 204 Date/Time: 9/19/2021 2200 Personnel Count: 85

ASSIGNMENT LIST (ICS 204 WF)

CONTROLLED UNCLASSIFIED
INFORMATION/BASIC

1. Incident Name: CALDOR	2. Operational Period: Date From: 09/20/21 Date To: 09/21/21 Time From: 0700 Time To: 0700	3. Branch Division III Q
---	---	---

4. Operations Personnel: Operations Section Chief: Jim Snow, Mike Page(T) Branch Director: John Owings Division/Group Supervisor: Kristian Litz, Andy Wordin(T)	Night Ops: Mike Koontz, Luis Gomez(T) Deputy Ops Al Ward, Chris StPierre(T) Air Attack:
--	---

5. Resources Assigned:	** Resources Below in Bold are 12 Hour **							
Resource Identifier	ALS	LWD	Leader	Personnel	Request #	Hours	Reporting Location	
HC1 TALLAC IHC		9/22	BETTY	20	C-50001	0700-1900	HEAVENLY ICP	
* HC1 EL DORADO IHC		9/21	STRAHN	20	C-50020	0700-1900	HEAVENLY ICP	
HC2IA TANANA CHIEFS		9/27	SIMPLE	18	C-104	0700-1900	HEAVENLY ICP	
HC2IA WHITE MOUNTAIN		9/26	STANSEL	21	C-107	0700-1900	HEAVENLY ICP	
HC2IA SAFFORD		9/22	ROMERO	19	C-50016	0700-1900	HEAVENLY ICP	
HC2IA ZEPHYR		9/26	FOGARTY	20	C-50050	0700-1900	HEAVENLY ICP	
HC2IA TD CREW 21		9/28	ZINK	14	C-50053	0700-1900	HEAVENLY ICP	
* HC2IA IRON MOUNTAIN 31		9/30	MCKURTIS	18	C-50062	0700-1900	HEAVENLY ICP	
HC2 RIFLE PEAK		9/28	ELLIS	21	C-50054	0700-1900	HEAVENLY ICP	
HC2 HVP 51		10/1	RITZMAN	18	C-50058	0700-1900	HEAVENLY ICP	
ENG3 AZ-CENTRAL 66		10/1	KONTZ	4	E-50269	0700-1900	HEAVENLY ICP	
ENG3 AZ-SUM		10/2	GLAZENER	3	E-50270	0700-1900	HEAVENLY ICP	
ENG4 EKD		9/22	KRENKA	4	E-50213	0700-1900	HEAVENLY ICP	
ENG6 NBF 661		10/2	JONES	3	E-50222	0700-1900	HEAVENLY ICP	
ENG6 ALPINE WILDFIRE		10/1	LARSON	3	E-21103	0700-1900	HEAVENLY ICP	
ENG6 PEANUT PIE		10/2	GOOD GUN	3	E-50219	0700-1900	HEAVENLY ICP	

6. Work Assignments:
 TASK: Secure existing line and continue to suppress any fire near Cody Meadow. Mop up to the extent necessary, utilizing natural barriers and secure any heat sources between DP-65 and Scout Peak
 PURPOSE: Minimize any fire progression and ensure the safety of those working within the division
 END STATE: Fires edge in the division is controlled and escape is improbable

7. Special Instructions:
 Backhaul trash, excess supplies and provide a location for accountable property
 Identify and coordinate the removal of hazard trees
 Resources denoted with * is identified as I/A resources within the TFR
 Resources need to report to Heavenly ICP (3860 Saddle Rd., South Lake Tahoe, CA 96150) for briefing and end of shift

8. Communications							
Name	Ch	Function	Rx Freq	Rx Tone	Tx Freq	Tx Tone	Notes
COMMAND SEE ICS 205	1	COMMAND					
NIFC T3	8	TACTICAL	168.6000N		168.6000N		
A/G CMD	14	A/G CMD	167.9500N		167.9500N		
CALCORD	15	COORDINATION	156.0750N	156.7	156.0750N	156.7	
GUARD 16	16	EMERGENCY	168.6250N		168.6250N	110.9	

9. Prepared by: Name: Mike Yeun, Chris Adams, Derek Acosta(T) RESL Signature:

ICS 204 Date/Time: 9/19/2021 2200 Personnel Count: 209

ASSIGNMENT LIST (ICS 204 WF)

CONTROLLED UNCLASSIFIED
INFORMATION/BASIC

1. Incident Name: <p style="text-align: center;">CALDOR</p>	2. Operational Period: Date From: 09/20/21 Date To: 09/21/21 Time From: 0700 Time To: 0700	3. Branch Division <p style="text-align: center;">III Q</p>
--	---	---

4. Operations Personnel:	Page 2 of 2 Quebec
---------------------------------	----------------------------------

Operations Section Chief: Jim Snow, Mike Page(T) Branch Director: John Owings Division/Group Supervisor: Kristian Litz, Andy Wordin(T)	Night Ops: Mike Koontz, Luis Gomez(T) Deputy Ops: Al Ward, Chris StPierre(T) Air Attack:
---	--

5. Resources Assigned:	** Resources Below in Bold are 12 Hour **						Hours	Reporting Location
Resource Identifier	ALS	LWD	Leader	Personnel	Request #			
WTT2 AC WATER		10/19	ROSE	1	E-20017	0700-1900	HEAVENLY ICP	
WTT2 CGS INC		10/19	CORELY	1	E-20280	0700-1900	HEAVENLY ICP	
WTS2 OXFORD		9/25	CLARK	1	E-257	0700-1900	HEAVENLY ICP	
WTS3 MOAPA VALLEY FD		10/2	WITTER	1	E-50245	0700-1900	HEAVENLY ICP	
SKD BULL CREEK		9/21	CAHOON	2	E-65	0700-1900	HEAVENLY ICP	
TFLD MACARTHUR		9/24	MACARTHUR	1	O-224	0700-1900	HEAVENLY ICP	
TFLD(T) MCARTHUR		9/21	MCARTHUR	1	O-50091	0700-1900	HEAVENLY ICP	
FMOD UNDERDOG TIMBER 1		9/23	BROWN	2	O-232	0700-1900	HEAVENLY ICP	
FMOD UNDERDOG TIMBER 2		9/20	POOR	2	O-20140	0700-1900	HEAVENLY ICP	
SOFR JOHNSON		9/22	JOHNSON	1	O-50210	0700-1900	HEAVENLY ICP	
EMPF BUBEN	X	9/27	BUBEN	1	O-50170	0700-1900	HEAVENLY ICP	
EMPF GHISLETTA	X	9/30	GHISLETTA	1	O-50313	0700-1900	HEAVENLY ICP	
EMPF VASQUEZ	X	9/30	VASQUEZ	1	O-50379	0700-1900	HEAVENLY ICP	
EMPF DEYOUNG	X	10/3	DEYOUNG	1	O-50407	0700-1900	HEAVENLY ICP	

6. Work Assignments:
 TASK: Secure existing line and continue to suppress any fire near Cody Meadow. Mop up to the extent necessary, utilizing natural barriers and secure any heat sources between DP-65 and Scout Peak
 PURPOSE: Minimize any fire progression and ensure the safety of those working within the division
 END STATE: Fires edge in the division is controlled and escape is improbable

7. Special Instructions:
 Backhaul trash, excess supplies and provide a location for accountable property
 Identify and coordinate the removal of hazard trees
 Resources denoted with * is identified as I/A resources within the TFR
 Resources need to report to Heavenly ICP (3860 Saddle Rd., South Lake Tahoe, CA 96150) for briefing and end of shift

8. Communications							
Name	Ch	Function	Rx Freq	Rx Tone	Tx Freq	Tx Tone	Notes
COMMAND SEE ICS 205	1	COMMAND					
NIFC T3	8	TACTICAL	168.6000N		168.6000N		
A/G CMD	14	A/G CMD	167.9500N		167.9500N		
CALCORD	15	COORDINATION	156.0750N	156.7	156.0750N	156.7	
GUARD 16	16	EMERGENCY	168.6250N		168.6250N	110.9	

9. Prepared by: Name:	Mike Yeun, Chris Adams, Derek Acosta(T)	RESL	Signature:
ICS 204	Date/Time: 9/19/2021 2200	Personnel Count: 17	

ASSIGNMENT LIST (ICS 204 WF)

CONTROLLED UNCLASSIFIED
INFORMATION/BASIC

1. Incident Name: <p style="text-align: center;">CALDOR</p>	2. Operational Period: Date From: 09/20/21 Date To: 09/21/21 Time From: 0700 Time To: 0700	3. Branch Division <p style="text-align: center;">III R</p>
--	---	---

4. Operations Personnel:		Page 1 of 1 Romeo
Operations Section Chief: Jim Snow, Mike Page(T) Branch Director: John Owings Division/Group Supervisor: Aaron Schumacher	Night Ops: Mike Koontz, Luis Gomez(T) Deputy Ops Al Ward, Chris StPierre(T) Air Attack: Todd White	

5. Resources Assigned:	** Resources Below in Bold are 12 Hour **						
Resource Identifier	ALS	LWD	Leader	Personnel	Request #	Hours	Reporting Location
HC2 FIRESTORM		10/2	LOPEZ	20	C-108	0700-1900	HEAVENLY ICP
ENG3 CCD 3324		10/1	VANDERSLICE	4	E-50195	0700-1900	HEAVENLY ICP
ENG4 COOPER CONTRACTING		10/1	BURWELL	3	E-50223	0700-1900	HEAVENLY ICP
ENG 4 BOSKET'S PLUMBING		9/30	BAILEY	3	E-50202	0700-1900	HEAVENLY ICP
ENG6 INDIANOLA		9/29	ALLSOP	3	E-50198	0700-1900	HEAVENLY ICP
ENG6 N4S		9/29	NAEGELE	2	E-50265	0700-1900	HEAVENLY ICP
ENG6 BKF 664		9/29	WOLFF	3	E-50201	0700-1900	HEAVENLY ICP
ENG6 OREGON WOODS INC		10/1	PARKINS	3	E-50210	0700-1900	HEAVENLY ICP
ENG6 ALLEN FIRE LLC		10/1	ALLEN	3	E-50218	0700-1900	HEAVENLY ICP
WTS2 IDAHO HEAVY EQUIP		9/27	HOLLIDAY	2	E-387	0700-1900	HEAVENLY ICP
EXCA BALDWIN DIESEL		10/2	MILLER	2	E-50232	0700-1900	HEAVENLY ICP
EXCA SERMON		10/2	SERMON	2	E-50260	0700-1900	HEAVENLY ICP
DOZ2 BUFFINGTON		10/17	BENSON	2	E-20022	0700-1900	HEAVENLY ICP
CHIP CTS VENTURES		9/29	NIEVES	2	E-20611	0700-1900	HEAVENLY ICP
SOFR TADLOCK		9/22	TADLOCK	1	O-50169	0700-1900	HEAVENLY ICP
EMPF ESTRADA	X	9/23	ESTRADA	1	O-50220	0700-1900	HEAVENLY ICP
EMTF PRADO		9/24	PRADO	1	O-50111	0700-1900	HEAVENLY ICP

6. Work Assignments:
 TASK: Secure existing line and continue to build fireline direct from DP-73 to Hwy 88. Mop up to the extent necessary, utilizing natural barriers and secure any heat sources West to Mormon Emigrant Trail.
 PURPOSE: Minimize any fire progression and ensure the safety of those working near Hwy 88
 END STATE: Fires edge in the division in controlled and escape is improbable

7. Special Instructions:
 Backhaul trash, excess supplies and provide a location for accountable property
 Identify and coordinate the removal of hazard trees
 Resources denoted with * is identified as I/A resources within the TFR
 Resources need to report to Heavenly ICP (3860 Saddle Rd., South Lake Tahoe, CA 96150) for briefing and end of shift

8. Communications


Name	Ch	Function	Rx Freq	Rx Tone	Tx Freq	Tx Tone	Notes
COMMAND SEE ICS 205	1	COMMAND					
NIFC T7	9	TACTICAL	168.2500N		168.2500N		
A/G CMD	14	A/G CMD	167.9500N		167.9500N		
CALCORD	15	COORDINATION	156.0750N	156.7	156.0750N	156.7	
GUARD 16	16	EMERGENCY	168.6250N		168.6250N	110.9	

9. Prepared by: Name: Mike Yeun, Chris Adams, Derek Acosta(T) RESL Signature:

ICS 204 Date/Time: 9/19/2021 2200 Personnel Count: 57

ASSIGNMENT LIST (ICS 204 WF)

CONTROLLED UNCLASSIFIED
INFORMATION/BASIC

1. Incident Name:		2. Operational Period:				3. Branch		Division	
CALDOR		Date From: 09/20/21		Date To: 09/21/21		III		Suppression Repair	
		Time From: 0700		Time To: 0700					
4. Operations Personnel:						Page 1 of 2			
Operations Section Chief: Jim Snow, Mike Page(T)				Night Ops: Mike Koontz, Luis Gomez(T)					
Branch Director: John Owings				Deputy Ops: Al Ward, Chris StPierre(T)					
Division/Group Supervisor: Rob Bertolina				Air Attack:					
5. Resources Assigned:		** Resources Below In Bold are 12 Hour **							
Resource Identifier	ALS	LWD	Leader	Personnel	Request #	Hours	Reporting Location		
HC2 R&R CONTRACTING		9/25	IBARRA	20	C-50041	0700-1900	HEAVENLY ICP		
HC2 GRIZZLY FIREFIGHTERS		9/25	FONSECA	20	C-50042	0700-1900	HEAVENLY ICP		
HC2 MS REGULAR 1		9/27	GLADNEY	22	C-50047	0700-1900	HEAVENLY ICP		
HC2 COOPER CONTRACTING		9/26	GRIMALDO	20	C-50048	0700-1900	HEAVENLY ICP		
HC2 PACIFIC COAST		10/2	CISNEROS	20	C-50003	0700-1900	HEAVENLY ICP		
HC2 VA INTERAGENCY 01		10/2	FREEMAN	21	C-50063	0700-1900	HEAVENLY ICP		
WTT2 QUALITY CONST		10/1	INDIHOR	1	E-20008	0700-1900	HEAVENLY ICP		
WTS2 ABLE SERVICES		10/2	DREW	1	E-50240	0700-1900	HEAVENLY ICP		
WTS3 KLEINWORTH		10/2	KLEINWORTH	1	E-50247	0700-1900	HEAVENLY ICP		
WTS3 US RANCH		10/2	SALAZAR	1	E-50246	0700-1900	HEAVENLY ICP		
DOZ2 HUCKABY CONSTRUCTION		9/30	STEINES	2	E-50236	0700-1900	HEAVENLY ICP		
DOZ2 2C LAND AND TIMBER		9/30	CARRIOOO	2	E-50234	0700-1900	HEAVENLY ICP		
DOZ3 DEUCES TRUCKING		9/30	JOHNSON	3	E-50238	0700-1900	HEAVENLY ICP		
EXCA JW MORRISON		9/30	DALE	1	E-50229	0700-1900	HEAVENLY ICP		
EXCA STOX 72		9/27	LICATA	2	E-686	0700-1900	HEAVENLY ICP		
EXCA MC EXCAVATION		10/3	STANHUPE	2	E-235	0700-1900	HEAVENLY ICP		
EXCA DAVIS CORP		9/23	PARKER	1	E-688	0700-1900	HEAVENLY ICP		
EXCA HACKER MACHINES		10/1	ARCE	2	E-50233	0700-1900	HEAVENLY ICP		
EXCA PRO INC		10/2	ROE	2	E-50261	0700-1900	HEAVENLY ICP		
6. Work Assignments:									
TASK: Perform priority suppression repair work within Branch 3. Coordinate closely with CALFIRE AEU and USFS REAFs, focusing efforts in Christmas Valley, Angora Meadow, and Freel Peak Road									
PURPOSE: Minimize any near-term environmental resource impacts as a result of fire suppression efforts									
END STATE: Watershed and areas adjacent to values at risk are protected using the approved standard									
7. Special Instructions:									
Backhaul trash, excess supplies and provide a location for accountable property									
Identify and coordinate the removal of hazard trees									
Resources denoted with * is identified as I/A resources within the TFR									
Resources need to report to Heavenly ICP (3860 Saddle Rd., South Lake Tahoe, CA 96150) for briefing and end of shift									
8. Communications									
Name	Ch	Function	Rx Freq	Rx Tone	Tx Freq	Tx Tone	Notes		
COMMAND SEE ICS 205	1	COMMAND							
NIFC T6	9	TACTICAL	166.7750N		166.7750N				
A/G CMD	14	A/G CMD	167.9500N		167.9500N				
CALCORD	15	COORDINATION	156.0750N	156.7	156.0750N	156.7			
GUARD 16	16	EMERGENCY	168.6250N		168.6250N	110.9			
9. Prepared by: Name:		Mike Yeun, Chris Adams, Derek Acosta(T)			RESL		Signature: 		
ICS 204		Date/Time: 9/19/2021 2200			Personnel Count: 142				

ASSIGNMENT LIST (ICS 204 WF)

CONTROLLED UNCLASSIFIED
INFORMATION/BASIC

1. Incident Name: <p style="text-align: center;">CALDOR</p>	2. Operational Period: Date From: 09/20/21 Date To: 09/21/21 Time From: 0700 Time To: 0700	3. Branch Division <p style="text-align: center;">III Suppression Repair</p>
--	---	--

Page 2 of 2

4. Operations Personnel: Operations Section Chief: Jim Snow, Mike Page(T) Branch Director: John Owings Division/Group Supervisor: Rob Bertolina	Night Ops: Mike Koontz, Luis Gomez(T) Deputy Ops Al Ward, Chris StPierre(T) Air Attack:
--	---

5. Resources Assigned:		** Resources Below in Bold are 12 Hour **					
Resource Identifier	ALS	LWD	Leader	Personnel	Request #	Hours	Reporting Location
GRD JDB3		9/27	WERRY	2	E-50147	0700-1900	HEAVENLY ICP
GRD MILLSAPS		9/24	HANSEN	2	E-50148	0700-1900	HEAVENLY ICP
CHIP MCKELLAR TREE SERV		9/28	AYALA	3	E-50134	0700-1900	HEAVENLY ICP
CHIP SISKIYOU TREES		9/21	LANGE	3	E-50136	0700-1900	HEAVENLY ICP
CHIP COLOR COUNTRY		9/23	DELOID	2	E-50137	0700-1900	HEAVENLY ICP
MAST JANC		10/1	JANC	2	E-50251	0700-1900	HEAVENLY ICP
MAST PERRAULT		10/1	DECUIR	2	E-50250	0700-1900	HEAVENLY ICP
FMOD REDWOOD EMPIRE		10/2	GONZALEZ	2	O-50342	0700-1900	HEAVENLY ICP
HEQB SEWELL		9/24	SEWELL	1	O-50178	0700-1900	HEAVENLY ICP
HEQB SHEPHERD		9/24	SHEPHERD	1	O-50012	0700-1900	HEAVENLY ICP
HEQB(T) LOZANO		9/24	LOZANO	1	O-50011	0700-1900	HEAVENLY ICP
READ PATTERSON			PATTERSON	1	O-50136	0700-1900	HEAVENLY ICP
REAF BROWN			BROWN	1	O-169	0700-1900	HEAVENLY ICP
REAF VAN SANT		9/29	VAN SANT	1	O-574	0700-1900	HEAVENLY ICP
ARCH BONSKOWSKI			BONSKOWSKI	1	O-344	0700-1900	HEAVENLY ICP
THSP TASE			TASE	1	O-525	0700-1900	HEAVENLY ICP
THSP GUSSES			GUSSES	1	O-526	0700-1900	HEAVENLY ICP

6. Work Assignments:
 TASK: Perform priority suppression repair work within Branch 3. Coordinate closely with CALFIRE AEU and USFS REAFs, focusing efforts in Christmas Valley, Angora Meadow, and Freel Peak Road
 PURPOSE: Minimize any near-term environmental resource impacts as a result of fire suppression efforts
 END STATE: Watershed and areas adjacent to values at risk are protected using the approved standard

7. Special Instructions:
 Backhaul trash, excess supplies and provide a location for accountable property
 Identify and coordinate the removal of hazard trees
 Resources denoted with * is identified as I/A resources within the TFR
 Resources need to report to Heavenly ICP (3860 Saddle Rd., South Lake Tahoe, CA 96150) for briefing and end of shift

8. Communications

Name	Ch	Function	Rx Freq	Rx Tone	Tx Freq	Tx Tone	Notes
COMMAND SEE ICS 205	1	COMMAND					
NIFC T6	9	TACTICAL	166.7750N		166.7750N		
A/G CMD	14	A/G CMD	167.9500N		167.9500N		
CALCORD	15	COORDINATION	156.0750N	156.7	156.0750N	156.7	
GUARD 16	16	EMERGENCY	168.6250N		168.6250N	110.9	

9. Prepared by: Name: Mike Yeun, Chris Adams, Derek Acosta(T) RESL Signature:

ICS 204 Date/Time: 9/19/2021 2200 Personnel Count: 27

ASSIGNMENT LIST (ICS 204 WF)

CONTROLLED UNCLASSIFIED
INFORMATION/BASIC

1. Incident Name: <p style="text-align: center;">CALDOR</p>	2. Operational Period: Date From: 09/20/21 Date To: 09/21/21 Time From: 0700 Time To: 0700	3. Branch Division <p style="text-align: center;">Night Night</p>
--	---	---

4. Operations Personnel: Page 1 of 1

Operations Section Chief: Jim Snow, Mike Page(T) Branch Director: TBD Division/Group Supervisor: TBD	Night Ops: Mike Koontz, Luis Gomez(T) Deputy Ops: Al Ward, Chris StPierre(T) Air Attack:
---	--

5. Resources Assigned:		** Resources Below in Bold are 12 Hour **					
Resource Identifier	ALS	LWD	Leader	Personnel	Request #	Hours	Reporting Location
ENG4 WY CAMPELL BRUSH 2		9/29	WHITE	3	E-50221	1900-0700	HEAVENLY ICP
ENG4 NV-HTF E461		9/22	ZAHRT	3	E-50211	1900-0700	HEAVENLY ICP
ENG4 PVT E411		9/29	MARTIN	3	E-50197	1900-0700	HEAVENLY ICP
ENG5 GCT LAND MGMT		9/29	CALDERON	3	E-50191	1900-0700	HEAVENLY ICP
ENG6 MT-KNF 651		9/29	BERGET	8	E-50194	1900-0700	HEAVENLY ICP
ENG6 R04 311		9/29	TURNER	3	E-50200	1900-0700	HEAVENLY ICP
ENG6 BELLEVUE		9/30	ARENAS	2	E-50214	1900-0700	HEAVENLY ICP
ENG6 BLM AZ E3664		9/29	HINDMAN	7	E-50216	1900-0700	HEAVENLY ICP
ENG6 AZ-PNF E952		9/29	BADGER	7	E-50217	1900-0700	HEAVENLY ICP
MEDIC 2	X	9/29	BLACK/ANDERSON	2	E-20593	1900-0700	HEAVENLY ICP

6. Work Assignments:
 TASK: Perform tactical patrol within the fire area, respond to any service calls, mitigate any isolated heat sources within the fire perimeter adjacent to infrastructures where safe to engage
 PURPOSE: Minimize any fire progression, keeping the fire within its current footprint
 END STATE: Fires edge is controlled and escape is improbable

7. Special Instructions:
 Resources denoted with * is identified as I/A resources within the TFR
 Resources need to report to Heavenly ICP (3860 Saddle Rd., South Lake Tahoe, CA 96150) for briefing and end of shift

8. Communications

Name	Ch	Function	Rx Freq	Rx Tone	Tx Freq	Tx Tone	Notes
COMMAND SEE ICS 205	1	COMMAND					
VFIRE 25	11	TACTICAL	154.2875N	156.7	154.2875N	156.7	
A/G CMD	14	A/G CMD	167.9500N		167.9500N		
CALCORD	15	COORDINATION	156.0750N	156.7	156.0750N	156.7	
GUARD 16	16	EMERGENCY	168.6250N		168.6250N	110.9	

9. Prepared by: Name: Mike Yeun, Chris Adams, Derek Acosta(T) RESL
 Signature:

ICS 204 Date/Time: 9/19/2021 2200 Personnel Count: 41

ICS 205 - INCIDENT RADIO COMMUNICATIONS PLAN

1. Incident Name: CALDOR EAST Z3

2. Date/Time Prepared: Date: 09/19/2021 Time: 1800

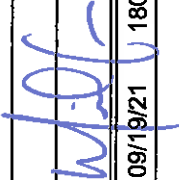
3. Operational Period: Date From: 09/20/21 Date To: 09/21/21
Time From: 0700 Time To: 0700

4. Communications

Ch#	Function	Name	Assigned To	Rx Freq	Rx Tone	Tx Freq	Tx Tone	Notes
1	COMMAND	CMD 5	EAST BRANCHES	169.7500N	146.2	167.1000N	146.2	MONUMENT PK LINKED W/ C67, C93, C96
2	COMMAND	CMD 93	EAST BRANCHES	166.6875N	146.2	162.9375N	146.2	SCOUT LINKED W/C5, C67, C96
3	COMMAND	CMD 67	EAST BRANCHES	172.0750N	146.2	162.2000N	146.2	KIRKWOOD MT, LINKED W/C5, C93, C96
4	COMMAND	CMD 96	EAST BRANCHES	169.9625N	146.2	165.0500N	146.2	PYRAMID PEAK LINKED W/C5, C93, C67
5	COMMAND	CMD 56	WEST BRANCHES	172.3500N	114.8	163.0375N	114.8	MONUMENT PK LINK TO WEST
6	TACTICAL	NIFC T1	DIV I/M	168.0500N		168.0500N		
7	TACTICAL	NIFC T6	DIV O/P	166.7750N		166.7750N		
8	TACTICAL	NIFC T3	DIV Q	168.6000N		168.6000N		
9	TACTICAL	NIFC T7	DIV R	168.2500N		168.2500N		
10	TACTICAL	VFIRE 24	FIRE SUPP. REPAIR	154.2725N	156.7	154.2725N	156.7	
11	TACTICAL	VFIRE 25	NIGHT OPS	154.2875N	156.7	154.2875N	156.7	
12	A/G CMD	A/G CMD	ALL BRANCHES	167.9500N		167.9500N		
13	A/G TAC	A/G TAC	A/G BUCKETS	166.6125N		166.6125N		
14	A/G TAC	A/G TAC2	A/G LOGS	169.2875N		169.2875N		
15	COORDINATION	CALCORD	ALL BRANCHES	156.0750N	156.7	156.0750N	156.7	MEDICAL COORDINATION
16	EMERGENCY	GUARD 16	ALL BRANCHES	168.6250N		168.6250N	110.9	EMERGENCY USE ONLY
17								
18								
19								
20	EMERGENCY	GUARD 16	ALL BRANCHES	168.6250N		168.6250N	110.9	EMERGENCY USE ONLY

EAST COMMUNICATION 208-850-8987

6. Prepared by: Name: MIKE GREENE COML

Signature: 

Date/Time: 09/19/21 1800

ICS 205 - INCIDENT RADIO COMMUNICATIONS PLAN

1. Incident Name:
CALDOR
WEST Z1

2. Date/Time Prepared
Date: 09/19/2021
Time: 1800

3. Operational Period:
Date To: 09/21/21
Time To: 0700

4. Communications		Assigned To	Rx Freq	Rx Tone	Tx Freq	Tx Tone	Notes
Ch#	Function	Name	Rx Freq	Rx Tone	Tx Freq	Tx Tone	Notes
1	COMMAND	CMD 109	170.3875N	114.8	162.1750N	114.8	BIG HILL
2	COMMAND	CMD 104	170.7625N	114.8	165.6250N	114.8	NORTH OF HWY 50 BETWEEN DP 21 AND DP 24
3	COMMAND	CMD 1	170.9750N	114.8	168.7000N	114.8	LEEK SPRINGS
4	COMMAND	CMD 11	170.6875N	114.8	166.575N	114.8	GRIZZLY FLATS AREA
5	COMMAND	CMD 113	170.3125N	114.8	165.6750N	114.8	KIRKWOOD MOUNTAIN
6	COMMAND	CMD 116	171.0375N	114.8	162.5875N	114.8	SIERRA SKI RESORT
7	TACTICAL	VTAC 13	158.7375N	156.7	158.7375N	156.7	
8	TACTICAL	NIFC T1	168.0500N		168.0500N		
9	TACTICAL	NIFC T6	166.7750N		166.7750N		
10	TACTICAL	NIFC T3	168.6000N		168.6000N		
11	TACTICAL	NIFC T7	168.2500N		168.2500N		
12	A/G CMD	A/G CMD	167.9500N		167.9500N		AIR TO GROUND
13	A/G TAC	A/G TAC	166.6125N		166.6125N		
14	A/G TAC	A/G TAC2	169.2875N		169.2875N		
15	MEDICAL	CALCORD	156.0750N	156.7	156.0750N	156.7	EMS COORDINATION ONLY
16	EMERGENCY	GUARD 16	168.6250N		168.6250N	110.9	EMERGENCY USE ONLY
17							
18							
19							
20	EMERGENCY	GUARD 16	168.6250N		168.6250N	110.9	EMERGENCY USE ONLY

5. Special Instructions
CALDOR COMMUNICATION ICP HEAVENLY 208-850-9987

6. Prepared by (Communications Unit Leader): Name: MIKE GREENE COML
Signature: 
Date/Time: 09/19/2021 1800
NIMS IAP


ICS 205 - INCIDENT RADIO COMMUNICATIONS PLAN

CONTROLLED UNCLASSIFIED
INFORMATION//BASIC

1. Incident Name: ENFAEU INITIAL ATTACK ONLY	2. Date/Time Prepared Date: 09/19/2021 Time: 1800	3. Operational Period: Date To: 09/21/21 Time To: 0700
--	--	---

4. Communications								
Ch#	Function	Name	Assigned To	Rx Freq	Rx Tone	Tx Freq	Tx Tone	Notes
1	COMMAND	ENFADM 1		172.3250N	156.7	165.2250N	110.9	FOREST ADMIN Tone 1-Alder
2	COMMAND	ENFADM 2		172.3250N	156.7	165.2250N	123.0	FOREST ADMIN Tone 2-Leek Springs
3	COMMAND	ENFADM 4		172.3250N	156.7	165.2250N	136.5	FOREST ADMIN Tone 4-Big Hill
4	COMMAND	ENFADM 6		172.3250N	156.7	165.2250N	156.7	FOREST ADMIN Tone 6-Echo Summit
5	COMMAND	XAM CT10		154.7625N	123.0	159.1800N	107.2	AMADOR CMD Tone 10-Leek Springs
6	COMMAND	XAM CT11		154.7625N	123.0	159.1800N	114.8	AMADOR CMD Tone 11-Zion Mountain
7	COMMAND	XED CT11		155.9025N	186.2	159.2775N	114.8	EL DORADO CMD Tone 11-Union
8	COMMAND	XED CT1		155.9025N	186.2	159.2775N	110.9	EL DORADO CMD Tone 1-Alder
9	COMMAND	XED CT4		155.9025N	186.2	159.2775N	136.5	EL DORADO CMD Tone 4-Big Hill
10	TACTICAL	R5 T4		166.5500N		166.5500N		REGION 5 TAC 4
11	TACTICAL	R5 T5		167.1125N		167.1125N		REGION 5 TAC 5
12	TACTICAL	R5 T6		168.2375N		168.2375N		REGION 5 TAC 6
13	TACTICAL	CDF T2		151.1600N	192.8	151.1600N	192.8	
14	TACTICAL	CDF T8		151.3700N	192.8	151.3700N	192.8	
15	AIR TO GROUND	A/G TAC	AIR TO GROUND	164.1375N		164.1375N		
16	EMERGENCY	GUARD 8	EMERGENCY	168.6250N		168.6250N	110.9	
17								
18								
19								
20	EMERGENCY	GUARD 8	EMERGENCY	168.6250N		168.6250N	110.9	

5. Special Instructions

6. Prepared by (Communications Unit Leader): Name: MIKE GREENE	Signature: 
ICS 205 - CONTROLLED UNCLASSIFIED INFORMATION//BASIC	Date/Time: 09/19/2021 1800

ICS 205 - INCIDENT RADIO COMMUNICATIONS PLAN

CONTROLLED UNCLASSIFIED
INFORMATION//BASIC

1. Incident Name: TAHOE BASIN I/A	2. Date/Time Prepared Date: 09/19/21 Time: 1800	3. Operational Period: Date From: 09/20/21 Time From: 0700 Date To: 09/21/21 Time To: 0700
---	--	---

4. Communications									
Ch#	Function	Name	Assigned To	Rx Freq	Rx Tone	Tx Freq	Tx Tone	Notes	
1	FOREST NET	ENF T9	ALL DIVS	171.5250N	156.7	162.7500N	T9-100.0	HAWKINS PK	
2	FOREST NET	TMU T2	ALL DIVS	172.3750N	156.7	164.9625N	T2-123.0	EAST PK	
3	FOREST NET	HTF T3	ALL DIVS	173.7750		165.7500N	T3-131.8	HAWKINS PK	
4	TACTICAL	NIFC T1	ALL DIVS	168.0500N		168.0500N			
5	TACTICAL	NIFC T2	ALL DIVS	168.200N		168.200N			
6	TACTICAL	R5T4	ALL DIVS	166.5500N		166.5500N			
7	TACTICAL	R5T5	ALL DIVS	167.1125N		167.1125N			
8	TACTICAL	VFIRE22	ALL DIVS	154.2650N	156.7	154.2650N	156.7		
9	TACTICAL	VFIRE23	ALL DIVS	154.2950N	156.7	154.2950N	156.7		
10	TACTICAL	VFIRE 26	ALL DIVS	154.3025N	156.7	154.3025N	156.7		
11	TACTICAL	CCD SOA	ALL DIVS	171.6750N		171.6750N		AKA' BLM SOA"	
12	TACTICAL	NDF RED 1	ALL DIVS	159.3450N		159.3450N			
13	AIR TO GROUND	A/G 14	ALL DIVS	167.5000N		167.5000N		I/A/A/G-ENF/TMU	
14	AIR TO GROUND	A/G 51	ALL DIVS	168.3125N		168.3125N		I/A/A/G-SIERRA FRONT	
15	MEDICAL	CALCORD	ALL DIVS	156.0750N	156.7	156.0750N	156.7	MEDICAL COORDINATION	
16	EMERGENCY	GUARD	EMERGENCY	168.6250N		168.6250N	110.9	EMERGENCY CONTACT	
17									
18									
19									
20	EMERGENCY	GUARD	EMERGENCY	168.6250N		168.6250N	110.9	EMERGENCY CONTACT	

5. Special Instructions

6. Prepared by (Communications Unit Leader): Name: MIKE GREENE	Signature:  Date/Time: 09/19/21 1800
---	--

AIR OPERATIONS SUMMARY

PREPARED BY: JoAnn Overacker (AOBD)

PREPARED DATE - TIME: 09/19/21 - 1800

1. INCIDENT NAME: **Calkor** 2. OPERATIONAL PERIOD DATE: **9/20/21** START: **0700** END: **2000** SUNRISE: **0645** SUNSET: **1900**

3. REMARKS (Safety Notes, Hazards, Air Operations Special Equipment, etc.):

4. MEDEVAC/A/C:
 H-5PT for Type II
 H-873 Hoist NVG
 See Medical Plan

5. TFR:
 Radius: Polygon
 Altitude: 11,500 MSL
 Center:
 Frequency: 118.6250

Track total gallons pulled per Dip Site and note on Helicopter Cost Summary.
 Ensure Covid precautions are exercised at Helibase

6. PERSONNEL		7. FREQUENCIES		8. FIXED-WING	
Phone		AM	FM	Airtankers	# Avail/Type/Make-Model / FAA NR / Base(s)
AOBD: JoAnn Overacker	209-559-1617	AIR/AIR FW: 118.6250			As Ordered: AA
ASGS(t): Rex Sundstrom	530-575-0368	AIR/AIR RW: 139.0250			
		AIR TACTICS: 163.3375		Lead Planes	As Ordered
HEBM: Cammie Roy	907-750-6620	A/G CMD:	167.9500		
HEBM(t): Scott Magargee	205-335-4932	A/G Buckets:	166.6125		
		A/G Cargo/Recon:	169.2875	ATGS Aircraft	As Ordered
ATGS: Todd White	530-263-5621	DECK:	163.1000		
HLCO: Jed Smith	530-307-9171	TVL TEMP Tower:	127.1250	ATGS (Night)	As Ordered
		CALCORD:	156.0750		
		GUARD 16:	168.6250		

9. HELICOPTERS (Use Additional Sheets As Necessary)

FAA #	Type	MAKE/MODEL	BASE	AVAIL	START	REMARKS	FAA #	Type	MAKE/MODEL	BASE	AVAIL	START	REMARKS
133HT	I	UH-60	Tahoe	0800	0700	Bucket - EU	H-516	II	Bell 212	Pacific	0800	0700	Bucket - EU
8CH	I	CH-47	Tahoe	"	"	Bucket - EU							
5HT	I	CH-54	Tahoe	"	"	Tank - EU							
18H	I	UH-60	Tahoe	"	"	Bucket - CWN							
5PT	II	Bell 205++	Tahoe	"	"	Bucket - EU							
69H	II	Bell 205++	Tahoe	"	"	Rappel - EU							
4HX	III	Bell 407	Tahoe	"	"	EU							
5AE	III	A-Star 350	Tahoe	"	"	EU							
509	III	Cobra	Tahoe	"	"	HLCO							

MEDICAL PLAN (ICS 206 WF) CIIMT 12

1. Incident Name				2. Operational Period				
CALDOR INCIDENT				Date/Time: 09/20/2021 – 09/21/2021 (24 hours)				
3. EMS / Ambulance Services/Aid Stations								
Name	Location			Frequency/Phone		Advanced Life Support (ALS) Yes No		
MEDICAL UNIT	ICP			805-813-3858 909-908-4778		X		
EL DORADO	CAMINO ECC SLT DISPATCH			530-647-5220 530-542-6148		X		
AMERICAN LEGION	CAMINO ECC SLT DISPATCH			530-647-5220 530-542-6148		X		
4. Air Rescue / Air Ambulance Services								
Name	Phone			Type of Aircraft & Capability				
GUARD 873	CAMINO ECC 530-647-5220			HELICOPTER, ALS, 24/7 - HOIST				
CAREFLIGHT	CAMINO ECC 530-647-5220			AIR AMBULANCE ALS – NO HOIST				
CALSTAR 6	CAMINO ECC 530-647-5220			AIR AMBULANCE ALS – NO HOIST				
5. Hospitals (all times estimated from incident location)								
Name & Level	GPS Datum – WGS 84 Degrees Decimal Minutes		Travel Time Air Gnd		Phone	Helipad Yes No		Address
BARTON MEMORIAL HOSPITAL (LEVEL 3)	Lat:	N 38° 54.72'	2 MIN	5 MIN	530-541-3420	X		2170 South Ave. South Lake Tahoe, CA 96150
	Long:	W 119° 59.72'						
RENOWN REGIONAL MEDICAL CENTER (LEVEL 2)	Lat:	N 39° 31.51'	20 MIN	1.5 HRS	775-982-2005	X		1156 Mill St Reno, NV 89502
	Long:	W 119° 47.75'						
SUTTER ROSEVILLE MEDICAL CENTER (LEVEL 2)	Lat:	N 38° 45.97'	45 MIN	3 HRS	916-781-1200	X		1 Medical Plaza Dr. Roseville, CA 95661
	Lat:	W 121° 14.87'						
UC DAVIS MEDICAL CENTER (LEVEL 1 TRAUMA/BURN)	Lat:	N 38° 33.32'	45 MIN	3 HRS	916-703-6576	X		2315 Stockton Blvd. Sacramento, CA 95817
	Long:	W 121° 27.35'						
6. Division / Crew Emergency Pre-Plan				<i>Update and discuss with assigned resources daily.</i>				
Fireline EMT / Medic's Division / Branch Location								
Air Hoist site location site: Lat: / Long: / Elevation:								
Helispot: Lat: / Long: / Elevation:								
7. Prepared By (Medical Unit Leader)			8. Date/Time		9. Reviewed By (Safety Officer)		10. Date/Time	
MEDL NICK STEPANIAN 909-908-4778 MEDL BRANDON BENNEWATE 805-813-3858 <i>Brandon Bennewate</i>			09/19/2021 1600		SOF2 PAUL TOMPKINS 619-889-7533 <i>Paul Tompkins</i>		09/19/2021 1600	

MEDICAL PLAN (ICS 206 WF) CIIMT 12

Medical Incident Report																													
<p>FOR A NON-EMERGENCY INCIDENT, WORK THROUGH CHAIN OF COMMAND TO REPORT AND TRANSPORT INJURED PERSONNEL AS NECESSARY.</p> <p>FOR A MEDICAL EMERGENCY: IDENTIFY ON SCENE INCIDENT COMMANDER BY NAME AND POSITION AND ANNOUNCE "MEDICAL EMERGENCY" TO INITIATE RESPONSE FROM IMT COMMUNICATIONS/DISPATCH.</p>																													
<p>Use the following items to communicate situation to communications/dispatch.</p>																													
<p>1. CONTACT COMMUNICATIONS / DISPATCH (Verify correct frequency prior to starting report) <i>Ex: "Communications, Div. Alpha. Stand-by for Emergency Traffic."</i></p> <p>2. INCIDENT STATUS: Provide incident summary (including number of patients) and command structure. <i>Ex: "Communications, I have a Red priority patient, unconscious, struck by a falling tree. Requesting air ambulance to Forest Road 1 at (Lat./Long.) This will be the Trout Meadow Medical, IC is TFLD Jones. EMT Smith is providing medical care."</i></p>																													
Severity of Emergency / Transport Priority	<input type="checkbox"/> RED / PRIORITY 1 Life or limb threatening injury or illness. Evacuation need is IMMEDIATE <i>Ex: Unconscious, difficulty breathing, bleeding severely, 2^o – 3^o burns more than 4 palm sizes, heat stroke, disoriented.</i> <input type="checkbox"/> YELLOW / PRIORITY 2 Serious Injury or illness. Evacuation may be DELAYED if necessary. <i>Ex: Significant trauma, unable to walk, 2^o – 3^o burns not more than 1-3 palm sizes.</i> <input type="checkbox"/> GREEN / PRIORITY 3 Minor Injury or illness. Non-Emergency transport <i>Ex: Sprains, strains, minor heat-related illness.</i>																												
Nature of Injury or Illness & Mechanism of Injury			Brief Summary of Injury or Illness <i>(Ex: Unconscious, Struck by Falling Tree)</i>																										
Transport Request			Air Ambulance / Short Haul/Hoist Ground Ambulance / Other																										
Patient Location			Descriptive Location & Lat. / Long. <i>(WGS84)</i>																										
Incident Name			Geographic Name + "Medical" <i>(Ex: Trout Meadow Medical)</i>																										
On-Scene Incident Commander			Name of on-scene IC of Incident within an Incident <i>(Ex: TFLD Jones)</i>																										
Patient Care			Name of Care Provider <i>(Ex: EMT Smith)</i>																										
<p>3. INITIAL PATIENT ASSESSMENT: Complete this section for each patient as applicable (start with the most severe patient)</p> <p>Patient Assessment: See IRPG PAGE 106</p> <p>Treatment:</p>																													
<p>4. TRANSPORT PLAN:</p> <p>Evacuation Location (if different): <i>(Descriptive Location (drop point, intersection, etc.) or Lat. / Long.)</i> Patient's ETA to Evacuation Location:</p> <p>Helispot / Extraction Site Size and Hazards:</p>																													
<p>5. ADDITIONAL RESOURCES / EQUIPMENT NEEDS:</p> <p><i>Example: Paramedic/EMT, Crews, Immobilization Devices, AED, Oxygen, Trauma Bag, IV/Fluid(s), Splints, Rope rescue, Wheeled litter, HAZMAT, Extrication :</i></p>																													
<p>6. COMMUNICATIONS: Identify State Air/Ground EMS Frequencies and Hospital Contacts as applicable</p> <table border="1" style="width: 100%; border-collapse: collapse;"> <thead> <tr> <th style="width: 15%;">Function</th> <th style="width: 20%;">Channel Name/Number</th> <th style="width: 15%;">Receive (RX)</th> <th style="width: 15%;">Tone/NAC *</th> <th style="width: 15%;">Transmit (TX)</th> <th style="width: 20%;">Tone/NAC *</th> </tr> </thead> <tbody> <tr> <td>COMMAND</td> <td></td> <td></td> <td></td> <td></td> <td></td> </tr> <tr> <td>AIR-TO-GRND</td> <td></td> <td></td> <td></td> <td></td> <td></td> </tr> <tr> <td>TACTICAL</td> <td></td> <td></td> <td></td> <td></td> <td></td> </tr> </tbody> </table>						Function	Channel Name/Number	Receive (RX)	Tone/NAC *	Transmit (TX)	Tone/NAC *	COMMAND						AIR-TO-GRND						TACTICAL					
Function	Channel Name/Number	Receive (RX)	Tone/NAC *	Transmit (TX)	Tone/NAC *																								
COMMAND																													
AIR-TO-GRND																													
TACTICAL																													
<p>7. CONTINGENCY: Considerations: If primary options fail, what actions can be implemented in conjunction with primary evacuation method? Be thinking ahead. .</p>																													
<p>8. ADDITIONAL INFORMATION: Updates/Changes, etc. .</p>																													
<p>REMEMBER: Confirm ETA's of resources ordered. Act according to your level of training. Be Alert. Keep Calm. Think Clearly. Act Decisively. .</p>																													

Fire and COVID-19 Briefing Checklist

Self-Awareness / Screening

- **Notify** supervisor if you or others experience:
 - Cough, more than expected
 - Difficulty breathing
 - Loss of taste or smell
 - Fever
 - Chills
 - Sore throat
 - Muscle pain
- **Immediately separate** yourself from others.
- Follow crew and division plans to isolate, triage, and transport symptomatic personnel.

Hygiene on the Fireline

- Properly wash or sanitize your hands often
- Avoid handshakes and communal use items
- Inform supervisor of needed resupply.
- Disinfect high touch surfaces often

Social distancing and protective equipment

- Practice social distancing
- Conduct briefings in conversations outdoors and at least **SIX** feet apart
- Utilize face coverings
- Clean or replace dirty face coverings, equipment, and PPE

Communications

- Ensure effective sender/receiver messaging.
- Protect yourself, your crew, and your camp!

Any questions contact:

BARTON HEALTH COVID HOTLINE: 530-600-1999

MEDL Brandon Bennewate @ (805) 813-3858

MEDL Nick Stepanian @ (909) 908-4778

COVID-19 testing is available in camp!



ICP, Main testing site - COVID Clinic East (M-F 0630-1230)

**Alternate Testing Sites – Heavenly Health Clinic or Mobile Medical Support Trailer
(M-F 1230-0630, Sat/Sun as needed)**

Heavenly Fire Camp

3680 Saddle Rd

South Lake Tahoe, CA 96150

Spike Camp (West side)

COVID Clinic West (M-F 0630-1230)

Placerville Ranger District

4260 Eight Mile Road

Camino, CA 95709

COVID testing provides peace of mind that you are not carrying the virus and spreading it to your crew or other people in camp.

Get tested even if you think your symptoms are just allergies or not that serious.

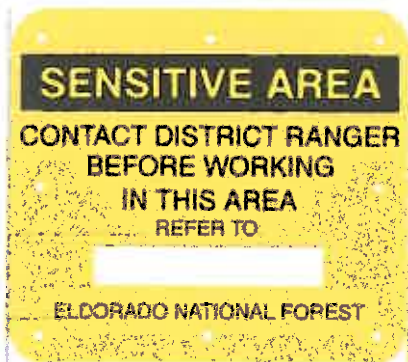
Resource Advisor Update

Avoidance areas for cultural and sensitive resources are being flagged within Divisions. If work needs to occur in areas identified by the following flagging/placard, please contact a REAF assigned to your Branch.

Avoidance Areas

Eldorado NF

**Pink/Black Checkered Flagging
and yellow placards**



LTBMU / Humboldt-Toiyabe NF

**Yellow and Green Paired
Flagging**



Eldorado NF Lead READ – Jen House

Lake Tahoe Basin Lead READ – Emma Williams



FINANCE MESSAGE

Fire Name: Caldor Fire
Fire Number: CA-ENF-024030
Accounting Code: P5N8GM21
Email: 2021.caldor.finance@firenet.gov
Hotline: 530-330-5450

Finance Documents Needed upon "Check In" (If Not Already Submitted):

Please email these documents or scan the QR Code below, attach & submit.			
Agency Equipment/ Crews: <ul style="list-style-type: none">Manifest - showing employment type (GS or WG) or AD rates if applicable	Overhead: <ul style="list-style-type: none">AD/Casual Hire FormIf regular Agency please ensure "GS" or "WG" is written on your first CTR	Contract Equipment/ Contract Crews: <ul style="list-style-type: none">AgreementManifestResource OrderInspections	Cooperator: <ul style="list-style-type: none">Cooperative AgreementResource Order

Please submit your CTR/Shift Tickets using the QR code or email address below:

Don't Forget to put your RO # on your CTR/Shift Ticket – final travel CTR's must be signed by supervisor on incident - Thank You

Please Include the Word "Equipment" for Federal Equipment or "Time" for Federal Overhead & Crews in the Subject Line of the Email





Human Resource Message

Thank you for the continuing mutual respect you are exhibiting on this incident.

Remember the work you are doing is important, or as Theodore Roosevelt said...

Far and away the best prize that life has to offer is the chance to work hard at work worth doing.



**Linda Overton, HRSP 707-373-7631
Adrian Escobedo, (Incoming HRSP)**

HRSP Trailer located at the end of Trailer Row

TRAINING SPECIALIST MESSAGE

Trainer / Mentors:

As of **9/19/21** there is no longer a Training Specialist on site.
A virtual training officer has been ordered and should be in place shortly.

TRAINEES:

*If you **ARE NOT** currently registered with the Training Specialist and you are demobed before a virtual specialist is in place, please make sure you get completed before you leave the incident the following from your trainer:*

- **Signatures in your task book**
 - **An evaluator record completed**
 - **A completed 225 Personnel Evaluation**
- *If you **ARE** currently registered with the Training Specialist that was on-site until this date, your records have been passed on to the virtual replacement. Until a new process has been established and shared ensure you secure the following which will be requested by virtual tnsf when in place.*
- **Completed ICS-225WF or ICS-226 Personnel Evaluation**
 - **Evaluator record for incident**
 - **Dates of your assignment, position held, and Trainer information**
 - **Trainer information includes name, phone, home unit, email address**
 - **Percentage of your task book that has been completed**

***Additional forms are available on-line @
<https://www.nwccg.gov/publications/ics-forms>***

It's been a pleasure working with you stay safe and stay learning!!

**Joe Smith Vanishing TNSP Trainee
Emil Picchi
Training Specialist
(650)520-5102
TNSPEP@gmail.com**

VIRTUAL DEMOBILIZATION

Please follow the steps below in order:

1. Scan the QR code and select the “Virtual Demob” item
2. Complete the questionnaire
3. Go to Weed Wash if indicated
4. Go to Ground Support for your post-inspection if indicated
5. Return items checked out from Supply
6. Return any items checked out in Comms
7. Go to Finance at the scheduled time to close out your CTR/Shift Tickets
8. Call Demob at 435-840-5432 to finalize your travel times.

PLEASE NOTE:

If you have any problems, contact Jan by phone
(435-840-5432) or at DMOB



TENTATIVE DEMOBS FOR MONDAY, SEPTEMBER 20, 2021

CREWS

TIME	RO #	RESOURCE NAME	ITEM CODE
0630	C-50089	ARAVAIPA	IHC

EQUIPMENT

TIME	RO #	RESOURCE NAME	ITEM CODE
0630	E-50089	D&S DIESEL	MEC
0645	E-617	TRUELINE SERVICE	MEC
0700	E-50078	LONESTAR	PU
0715	E-50133	GTP 601	ENG6
0730	E-21280	NM ENG 671	ENG3
0745	E-20763	NTF 54	ENG3
0800	E-21224	DURANGO BRUSH 33	ENG3
0815	E-50254	EVANS	MAST
0830	E-50253	BUNKER	MAST
0845	E-58	ON-SITE EQUIPMENT	MAST
0900	E-50092	WT4	WTS2
0915	E-21276	NM MARTINEZ	ENG3

OVERHEAD

TIME	RO #	RESOURCE NAME	ITEM CODE
0630	O-50078	MIKE CARTER	DIVS
0645	O-50152	AMANDA ROGERS	GISS
0700	O-20761.54	BRENDA CARRION	INCM
0715	O-487	EDWARD WILLIAMS	SEC1
0730	O-281	HERBERT RAY	CACB
0745	O-341	CORINNE DALTON	EQTR
0800	O-50133	EMMA WILLIAMS	REAF
0815	O-50141	MICHAEL ALFORQUE	SOF1
0830	O-50156	TROY LUHNOW	FACL

Acquiring lodging at the Harvey's hotel

Harvey's hotel is associated with the Harrah's. They are across the street from each other and are joined by a tunnel under Hwy 50. They have opened the Harvey's hotel specifically for firefighters battling the Caldor fire. No public is staying at that property. **Hotel support and check in for the Harvey Hotel, including front desk services is located at the Harrah's property.** This includes check-in and any maintenance service. Large vehicle parking is at the large parking lot at Harrah's accessible off Lake Parkway. Small vehicles can access the parking structure at Harvey's. At both locations, collect the parking stub to go through the gate. There is no charge for parking. You will be able to use your hotel room card to enter the gate after that.

To reserve a room at the Harvey's hotel, you may go directly to the Harrah's front desk and tell them you are on the **Caldor Fire**. They will give you the government per diem rate.

At briefing, we are also handing out hotel reservation forms that you can fill out and return to us. We will bring these to the hotel after briefing. Your key card will be ready when you arrive at the Harrah's front desk after shift.

You may also call the hotel desk at 775-691-0416 to reserve your room under "Caldor Fire".

Once you check in to the hotel on the Harrah's side, you will then proceed to Harvey's either through the underground tunnel or drive to the Harvey's parking structure. Note: the elevator bank closest to the (currently closed) Harvey's front desk is not in service. You will need to use the Mountain Tower elevator bank by the arcade.

The hotel asks that if you would like trash pickup, please place your trash bags in the hallway and call the front desk to let them know where it is. They don't have enough staff to patrol the halls. They are also available to clean rooms, but you will need to call the front desk for that as well.

Hotel Acquisition Process

The Caldor incident has authorized the individual procurement of hotel accommodations. This is for lodging only. The process below discusses financial procedure and documentation:

If you are a **local agency dispatched through CFAA**, you will need to acquire an S# prior to demob. This number will also be entered on your F42 form.

Federal resources with a travel card will be processed through your agency's travel reimbursement process. Finance will provide a 213 with approval statement upon demob, if required by your agency.

All other non-federal resources, or federal resources that do not have purchasing capability, complete the following:

AD's who are able to pay and get reimbursed for travel will need to pay lodging and get reimbursed through your normal reimbursement process. You will be given a 213 with authorization statement from the finance section during demob.

For AD's and Seasonal Federal Employees who are unable to pay for lodging, the buying team may be able to assist with purchasing your accommodations. Inquire with the incident Finance Section. Federal resources who have the crew boss card option should use this as a first option.

In accordance with each individual contract, **contractors** shall pay for lodging and submit receipts for additions to your invoice (OF-286). Itemized receipts ARE required by the finance section during demob. Also, please note that double occupancy may be required on many contracts.

The finance section will provide S#'s during your demob or sooner.

If you're not in one of these categories or uncertain, finance can help you check. Please use the hotline number: 530-330-5450 or email 2021.Caldor.finance@firenet.gov. If emailing include your resource number, type of resource and contact phone number.

ICP LOGISTICS NOTES

Supply: 0600-2100

Ordering: 0600-2100

Communications: 24/7 Techs: 0600-2100

Food: Breakfast: 0600-0930

Dinner: 1800-2130

Refer Trailer: 0600-2100

Showers: 0500-1300 & 1500-2200

Laundry service: 0500-2200

Ground Support: 0600-2200

Mechanic: 0600-2200

Weed Wash: 0600-1200 1300-2200

Fuel: 0600-1100 and 1400-2200

Medical: 24/7

-Barton Clinic: 0630-0930

-COVID testing: M-F 0600-1200

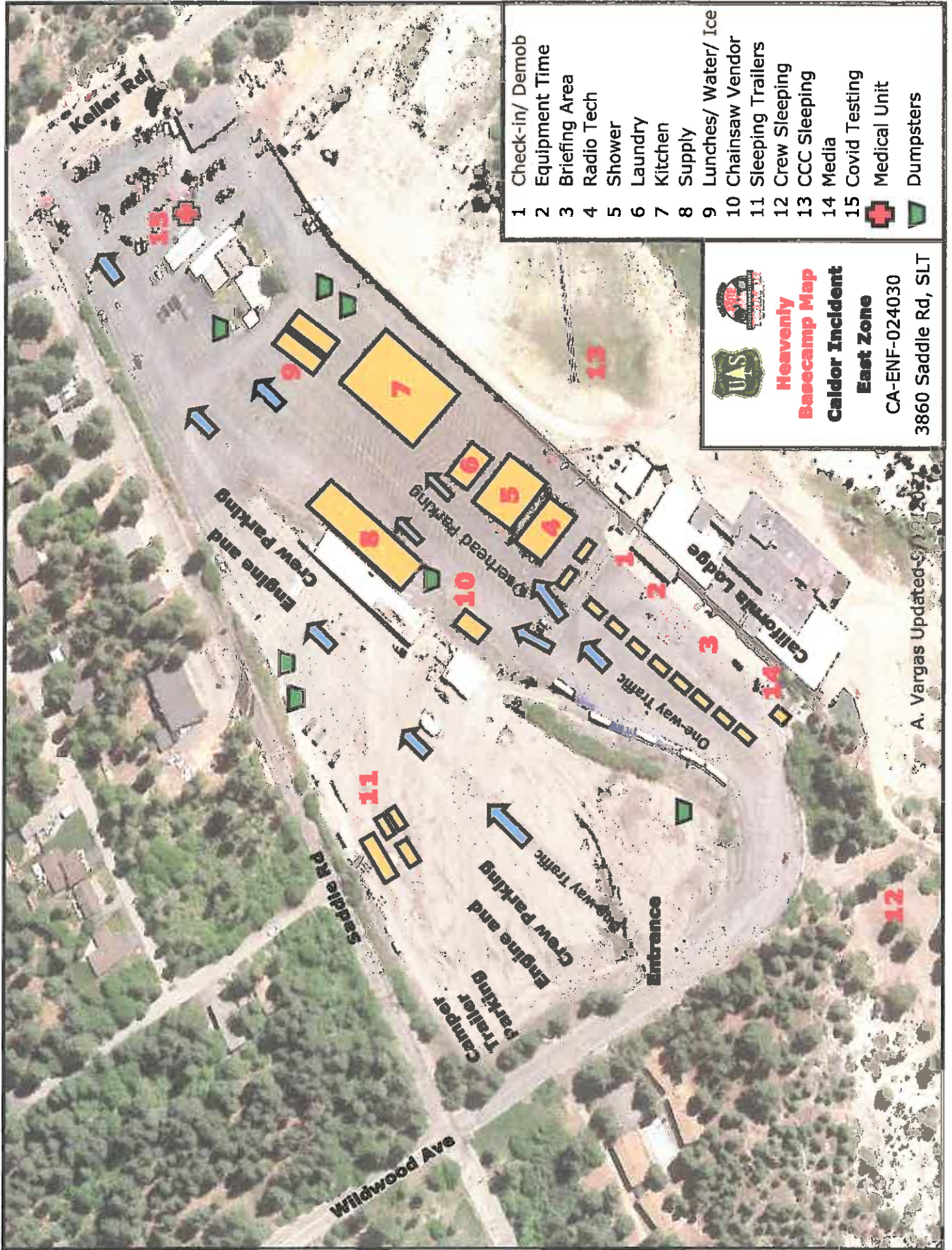
-Mobile Medical Supply Trailer: M-Su 0600-2200

PLEASE DO:

- Only drive ONE WAY in camp.
- Put trash in the dumpster and close the lid...we have Bears!
- Treat other people the way you want to be treated.

PLEASE DO NOT:

- Walk on the roads that vehicles drive on.
- Sleep in vehicle parking areas.

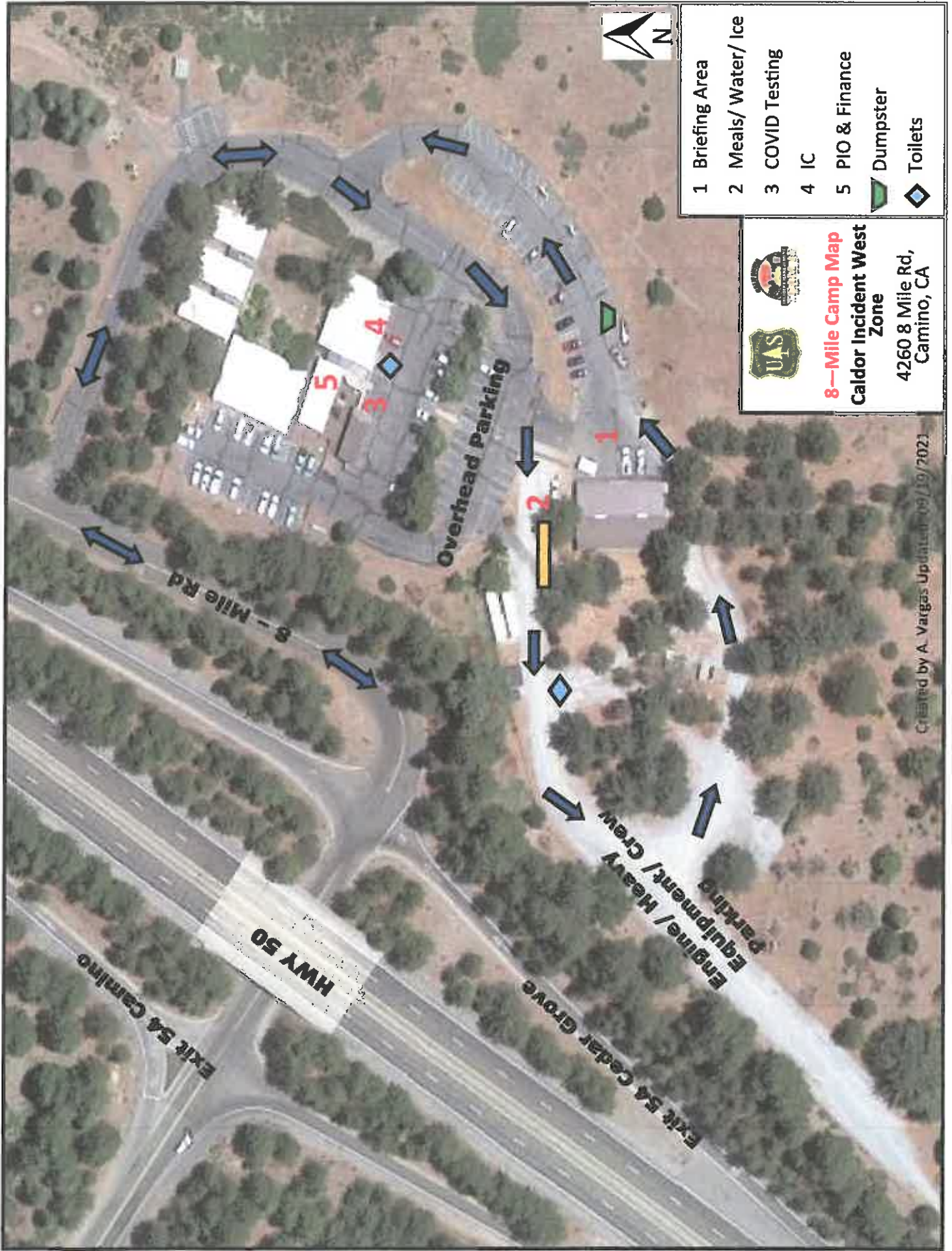


- 1 Check-in/ Demob
 - 2 Equipment Time
 - 3 Briefing Area
 - 4 Radio Tech
 - 5 Shower
 - 6 Laundry
 - 7 Kitchen
 - 8 Supply
 - 9 Lunches/ Water/ Ice
 - 10 Chainsaw Vendor
 - 11 Sleeping Trailers
 - 12 Crew Sleeping
 - 13 CCC Sleeping
 - 14 Media
 - 15 Covid Testing
- + Medical Unit
▽ Dumpsters




Heavenly Basecamp Map
Caldor Incident East Zone
 CA-ENF-024030
 3860 Saddle Rd, SLT

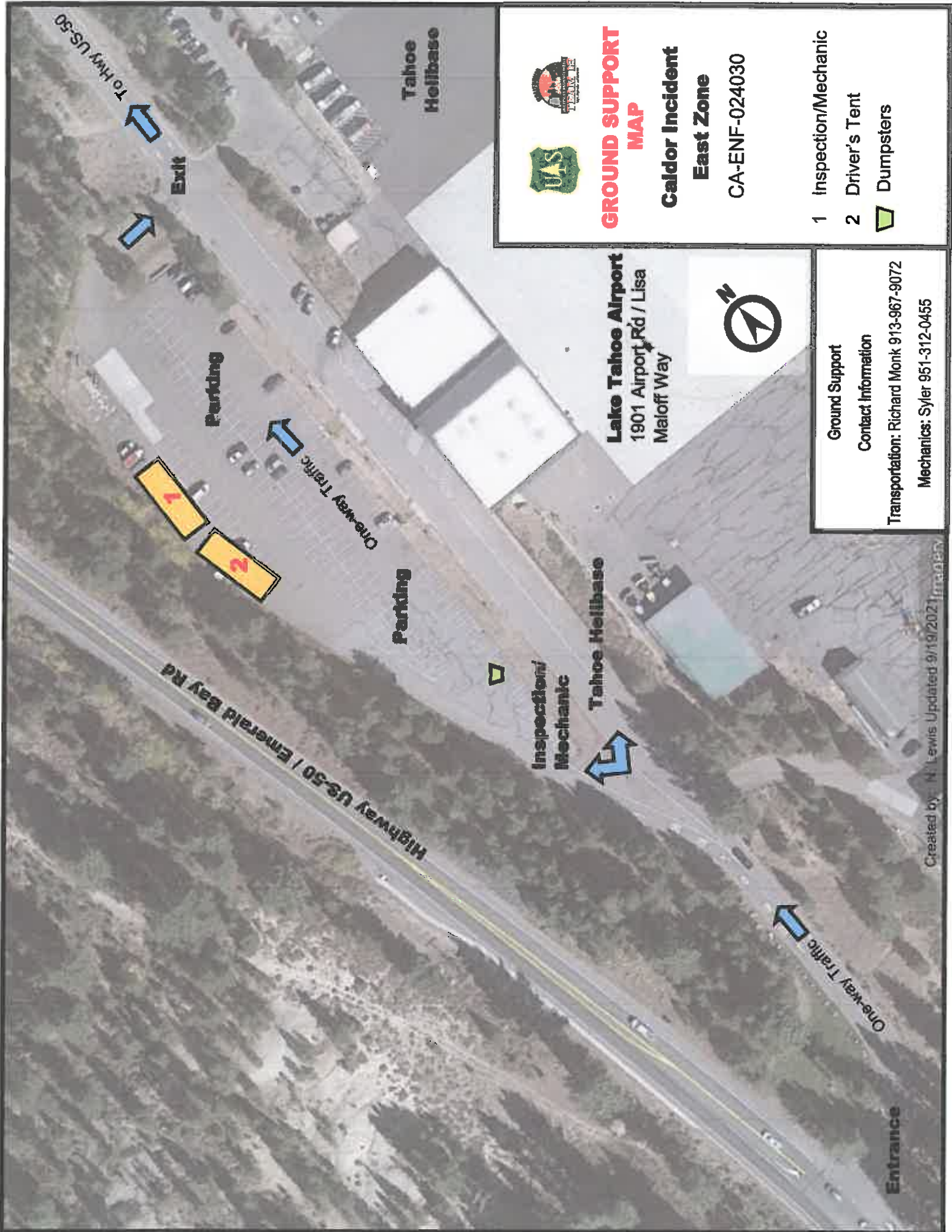
A. Vargas Updated 5/21/2022



- 1 Briefing Area
- 2 Meals/ Water/ Ice
- 3 COVID Testing
- 4 IC
- 5 PIO & Finance
-  Dumpster
-  Toilets





8-Mile Camp Map
Caldor Incident West Zone
 4260 8 Mile Rd,
 Camino, CA



**GROUND SUPPORT
MAP**

**Caldor Incident
East Zone
CA-ENF-024030**

- 1 Inspection/Mechanic
- 2 Driver's Tent
-  Dumpsters

Lake Tahoe Airport
1901 Airport Rd / Lisa Maloff Way



Ground Support
Contact Information
 Transportation: Richard Monk 913-967-9072
 Mechanics: Syler 951-312-0455

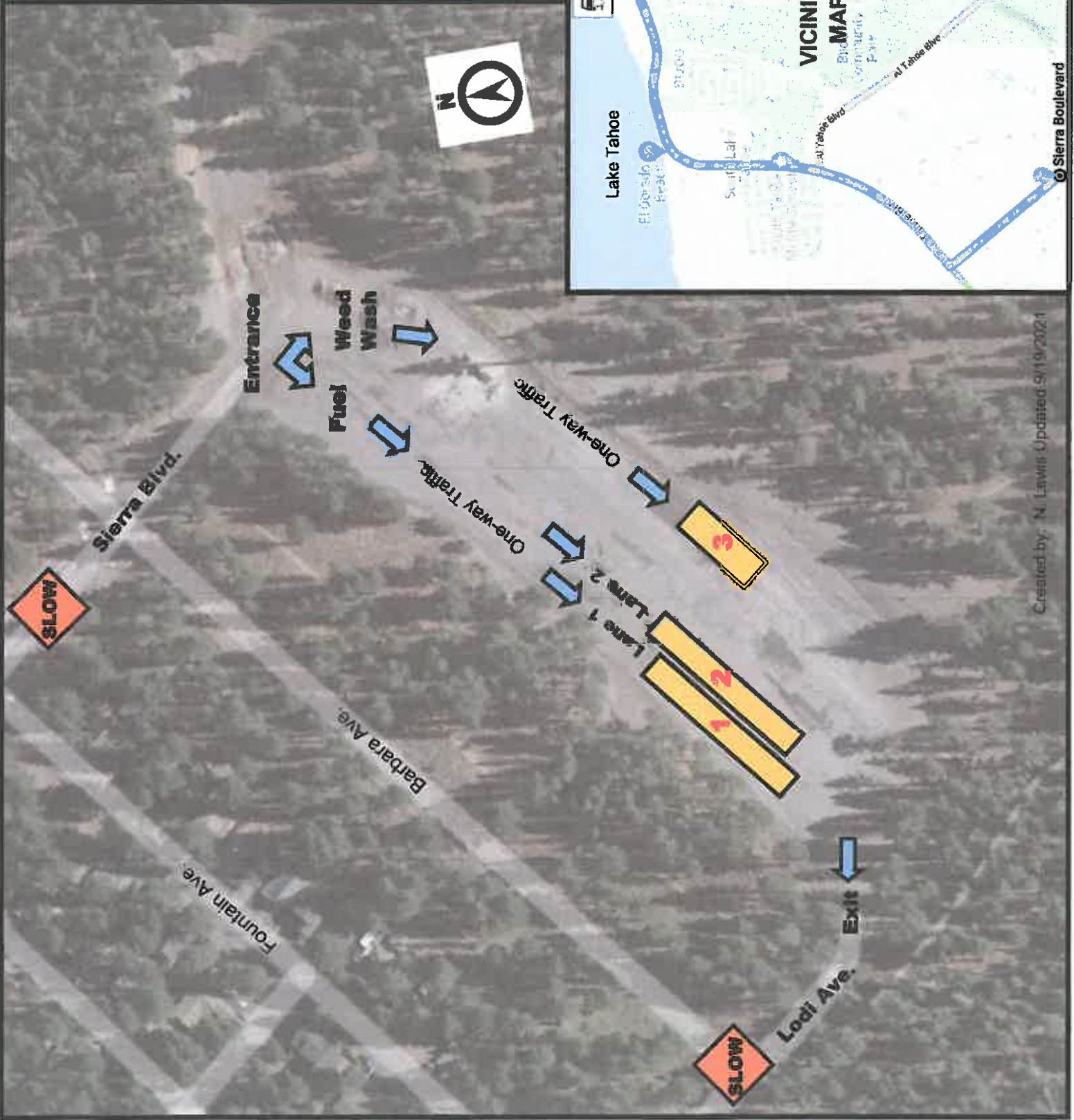


WEED WASH AND REFUEL MAP

Caldor Incident East Zone

CA-ENF-024030

- 1 Fuel Tender Lane 1
- 2 Fuel Tender Lane 2
- 3 Weed Wash



**STATE DPA
CAL FIRE
RESOURCES**

ASSIGNMENT LIST (ICS 204 WF)

CONTROLLED UNCLASSIFIED
INFORMATION/BASIC

1. Incident Name: AEU Caldor Support	2. Operational Period: Date From: 09/20/21 Date To: 09/21/21 Time From: 0700 Time To: 0700	3. Branch Division SRA WEST SRA Page 1 of 1
---	---	---

4. Operations Personnel:		
Operations Section Chief: J. Vickers	Night Ops: _____	
Branch Director: _____	Branch Safety: _____	
Division/Group Supervisor: T. Gifford	Air Attack: _____	

5. Resources Assigned:			** Resources Below in Bold are 12 Hour **				
Resource Identifier	ALS	LWD	Leader	Personnel	Request #	Hours	Reporting Location
STC AEU 9270C			T. Gifford	18	E-22	0700-1900	ICP
STG AEU 9273G (CDCR)			A. Cholico	18	C-1	0700-1900	ICP
CRW AEU PVC 2			T. Silva	15	C-2	0700-1900	ICP
ENG AEU 2754			A. Savage	3	E-	0700-1900	ICP
ENG AEU 2761			A. Adrian	4	E-	0700-1900	ICP
W/T PVT E-28 GOLDEN				1	E-28	0700-1900	ICP

6. Work Assignments:
 Perform Tactical Patrol - 100 Percent mop up within the SRA
 Back haul trash and excess supplies.
 Monitor command frequencies.

7. Special Instructions:

8. Communications							
Name	Ch	Function	Rx Freq	Rx Tone	Tx Freq	Tx Tone	Notes
XED CMD	1	COMMAND	155.9025	186.2 (T31)	159.2775	114.8 (T11)	WEST BRANCHES AEU SUPPORT
CDF T26	6	TACTICAL	159.2925	192.8 (T16)	159.2925	192.8 (T16)	WEST SRA, FSR WEST GROU
A/G TAC 2	14	AIR TO GROUND	169.2875		169.2875		A/G LOGS
CALCORD	15	MEDICAL	156.0750	156.7 (T6)	156.0750	156.7 (T6)	EMS COORDINATION ONLY
GUARD 16	16	EMERGENCY	168.6250		168.6250	110.9 (T1)	EMERGENCY USE ONLY

9. Prepared by: Name:	N. Pimlott	RESL	Signature:
ICS 204	Date/Time: 9/19/2021 2200		Personnel Count: 59

ASSIGNMENT LIST (ICS 204 WF)

CONTROLLED UNCLASSIFIED
INFORMATION/BASIC

1. Incident Name: AEU Caldor Support	2. Operational Period: Date From: 09/20/21 Date To: 09/21/21 Time From: 0700 Time To: 0700	3. Branch SRA	Division EAST SRA
---	---	--------------------------------	------------------------------------

Page 1 of 1

4. Operations Personnel: Operations Section Chief: J. Vickers Branch Director: Division/Group Supervisor: B. Pooley		Night Ops: Branch Safety: Air Attack:
---	--	---

5. Resources Assigned:		** Resources Below In Bold are 12 Hour **						
Resource Identifier	ALS	LWD	Leader	Personnel	Request #	Hours	Reporting Location	
T/F AEU 9272C			B. Pooley	18	E-37	0700-1900	Chateau	
STG AEU 9279G (CCC)			D. Garnin	33	C-3	0700-1900	Chateau	

6. Work Assignments: Perform Tactical Patrol - 100 Percent mop up within the SRA Back haul trash and excess supplies. Monitor command frequencies.
--

7. Special Instructions:

8. Communications							
Name	Ch	Function	Rx Freq	Rx Tone	Tx Freq	Tx Tone	Notes
TMU AD 2	3	COMMAND	171.5750	156.7 (T6)	165.4125	123.0 (T2)	TAHOE BASIN AEU SUPPORT
CDF T27	7	TACTICAL	159.3075	192.8 (T16)	159.3075	192.8 (T16)	EST SRA & FSR EAST
A/G TAC 2	14	AIR TO GROUND	169.2875		169.2875		A/G LOGS
CALCORD	15	MEDICAL	156.0750	156.7 (T6)	156.0750	156.7 (T6)	EMS COORDINATION ONLY
GUARD 16	16	EMERGENCY	168.6250		168.6250	110.9 (T1)	EMERGENCY USE ONLY

9. Prepared by: Name: N. Pirlott	RESL	Signature: 
---	------	--

ICS 204	Date/Time: 9/19/2021 2200	Personnel Count: 51
---------	---------------------------	---------------------

CONTROLLED UNCLASSIFIED INFORMATION/BASIC

ASSIGNMENT LIST (ICS 204 WF)

CONTROLLED UNCLASSIFIED
INFORMATION/BASIC

1. Incident Name: AEU Caldor Support	2. Operational Period: Date From: 09/20/21 Date To: 09/21/21 Time From: 0700 Time To: 0700	3. Branch Division FSR WEST1 Group 2
---	---	---

4. Operations Personnel:		Page 1 of 1
Operations Section Chief: J. Vickers	Night Ops:	
Branch Director: S. DeBenedet (12hr)	Branch Safety:	
Division/Group Supervisor: E. Wahl (12hr)	Air Attack:	

5. Resources Assigned:		** Resources Below in Bold are 12 Hour **						
Resource Identifier	ALS	LWD	Leader	Personnel	Request #	Hours	Reporting Location	
DOZ PVT E-17 CGS			P. Hatlestad	1	E-17	0700-1900	Happy Valley x Sweeney	
DOZ PVT E-19 TREACHEROUS			C. Klauer	1	E-19	0700-1900	Happy Valley x Sweeney	
DOZ PVT E-69 PALMER			J. Palmer	1	E-69	0700-1900	Happy Valley x Sweeney	
EXC PVT E-13 JA SNYDER				1	E-13	0700-1900	Happy Valley x Sweeney	
EXC PVT E-71 BARTLETT			T. Tompson	1	E-71	0700-1900	Happy Valley x Sweeney	
EXC PVT E-84 AMOS			M. Amos	1	E-84	0700-1900	Happy Valley x Sweeney	
MAST PVT E-105 ONSITE			K. Martin	1	E-105	0700-1900	Happy Valley x Sweeney	
CHIP PVT E-58 J&P			T. Vaneck	1	E-58	0700-1900	Happy Valley x Sweeney	
HEQB (T) NEGRETE			M. Negrete	1	O-35	0700-1900	Happy Valley x Sweeney	
FSRS MONTGOMERY			T. Montgomery	1	O-57	0700-1900	Happy Valley x Sweeney	
FOBS SMITH			P. Smith	1	O-71	0700-1900	Happy Valley x Sweeney	

6. Work Assignments:
 Implement Fire Suppression repair plan.
 Identify and document fire suppression repair needs.

7. Special Instructions:

8. Communications							
Name	Ch	Function	Rx Freq	Rx Tone	Tx Freq	Tx Tone	Notes
XED CMD	1	COMMAND	155.9025	186.2 (T31)	159.2775	114.8 (T11)	WEST BRANCHES AEU SUPPORT
CDF T26	6	TACTICAL	159.2925	192.8 (T16)	159.2925	192.8 (T16)	WEST SRA, FSR WEST GROU
AVG TAC 2	14	AIR TO GROUND	169.2875		169.2875		AVG LOGS
CALCORD	15	MEDICAL	156.0750	156.7 (T6)	156.0750	156.7 (T6)	EMS COORDINATION ONLY
GUARD 16	16	EMERGENCY	168.6250		168.6250	110.9 (T1)	EMERGENCY USE ONLY

9. Prepared by: Name: N. Pirniott	RESL	Signature:
ICS 204	Date/Time: 9/19/2021 2200	Personnel Count: 11

ASSIGNMENT LIST (ICS 204 WF)

CONTROLLED UNCLASSIFIED
INFORMATION/BASIC

1. Incident Name: AEU Caldor Support	2. Operational Period: Date From: 09/20/21 Date To: 09/21/21 Time From: 0700 Time To: 0700	3. Branch Division FSR WEST Group 5
---	---	--

4. Operations Personnel: Operations Section Chief: J. Vickers Branch Director: S. DeBenedet (12hr) Division/Group Supervisor: Q. Breniman (12hr)		Night Ops: Branch Safety: Air Attack:
---	--	---

Page 1 of 1

5. Resources Assigned:	** Resources Below in Bold are 12 Hour **						
Resource Identifier	ALS	LWD	Leader	Personnel	Request #	Hours	Reporting Location
DOZ PVT E-11 ROWLEY			B. Rawley	1	E-11	0700-1900	DP-28
EXC PVT E-45 EUREKA			J. Kelly	1	E-45	0700-1900	DP-28
SKD PVT E-5 TRESSLER			B. Davidson	1	E-5	0700-1900	DP-28
SKD PVT E-7 TIMBERSMITH			G. Bates	1	E-7	0700-1900	DP-28
SKD PVT E-9 NORCAL			K. Umidon	1	E-9	0700-1900	DP-28
MAST PVT E-106 ELDRED			C. Elderd	1	E-56	0700-1900	DP-28
FSRS (T) VAN GOIDSENHOVEN			D. Van Goldsenhoven	1	O-49	0700-1900	DP-28
THSP NORVILLE			M. Norville	1	O-41	0700-1900	DP-28

6. Work Assignments:
Implement Fire Suppression repair plan.
Identify and document fire suppression repair needs.

7. Special Instructions:

8. Communications							
Name	Ch	Function	Rx Freq	Rx Tone	Tx Freq	Tx Tone	Notes
XED CMD	1	COMMAND	155.9025	186.2 (T31)	159.2775	114.8 (T11)	WEST BRANCHES AEU SUPPORT
CDF T26	6	TACTICAL	159.2925	192.8 (T16)	159.2925	192.8 (T16)	WEST SRA, FSR WEST GROU
A/G TAC 2	14	AIR TO GROUND	169.2875		169.2875		A/G LOGS
CALCORD	15	MEDICAL	156.0750	156.7 (T6)	156.0750	156.7 (T6)	EMS COORDINATION ONLY
GUARD 16	16	EMERGENCY	168.6250		168.6250	110.9 (T1)	EMERGENCY USE ONLY

9. Prepared by: Name: N. Pimlott RESL
Signature:
ICS 204 Date/Time: 9/19/2021 2200 Personnel Count: 8

ASSIGNMENT LIST (ICS 204 WF)

CONTROLLED UNCLASSIFIED
INFORMATION/BASIC

1. Incident Name: AEU Caldor Support	2. Operational Period: Date From: 09/20/21 Date To: 09/21/21 Time From: 0700 Time To: 0700	3. Branch Division FSR WEST1 Fence
---	---	---

Page 1 of 1

4. Operations Personnel:	
Operations Section Chief: J. Vickers	Night Ops:
Branch Director: S. DeBenadet (12hr)	Branch Safety:
Division/Group Supervisor: E. Simpson (12hr)	Air Attack:

5. Resources Assigned:							
** Resources Below in Bold are 12 Hour **							
Resource Identifier	ALS	LWD	Leader	Personnel	Request #	Hours	Reporting Location
FSRS SHARP			J. Sharp	1	O-	0700-1900	ICP
EXC PVT E-63 DEPUE			H. Swartz	1	E-63	0700-1900	ICP

6. Work Assignments:
Implement Fire Suppression repair plan.
Identify and document fire suppression repair needs.

7. Special Instructions:

8. Communications							
Name	Ch	Function	Rx Freq	Rx Tone	Tx Freq	Tx Tone	Notes
XED CMD	1	COMMAND	155.9025	186.2 (T31)	159.2775	114.8 (T11)	WEST BRANCHES AEU SUPPORT
CDF T28	8	TACTICAL	151.1825	192.8 (T16)	151.1825	192.8 (T16)	FENCE GROUP
A/G TAC 2	14	AIR TO GROUND	169.2875		169.2875		A/G LOGS
CALCORD	15	MEDICAL	156.0750	156.7 (T6)	156.0750	156.7 (T6)	EMS COORDINATION ONLY
GUARD 16	16	EMERGENCY	168.6250		168.6250	110.9 (T1)	EMERGENCY USE ONLY

9. Prepared by: Name: N. Pimlott	RESL	Signature:	
ICS 204	Date/Time: 9/19/2021 2200	Personnel Count: 2	

ASSIGNMENT LIST (ICS 204 WF)

CONTROLLED UNCLASSIFIED
INFORMATION/BASIC

1. Incident Name: AEU Caldor Support	2. Operational Period: Date From: 09/20/21 Date To: 09/21/21 Time From: 0700 Time To: 0700	3. Branch Division FSR EAST EAST
---	---	---

4. Operations Personnel:		Page 1 of 2
Operations Section Chief: J. Vickers	Night Ops:	
Branch Director: M. Scheeline (12hr)	Branch Safety:	
Division/Group Supervisor: N. Ozard (12hr)	Air Attack:	

5. Resources Assigned:		** Resources Below in Bold are 12 Hour **						
Resource Identifier	ALS	LWD	Leader	Personnel	Request #	Hours	Reporting Location	
DOZ PVT E-73 NORTH WESTERN			M. Salters	1	E-73	0700-1900		
DOZ PVT E-75 NORTH WESTERN			B Waddell	1	E-75	0700-1900		
DOZ PVT E-77 STAR			A. Bennett	1	E-77	0700-1900		
W/T PVT E-51 FIRELINE			R. Hurl	1	E-51	0700-1900		
W/T PVT E-52 DRE			R. Ertl	1	E-52	0700-1900		
MAST PVT E-81 KRISMAN			T. Krisman	1	E-81	0700-1900		
MAST PVT E-92 HEAVY HAUL			A. Harris	1	E-92	0700-1900		
MAST PVT E-93 COLLINS			M. Collins	1	E-93	0700-1900		
MAST PVT E-94 COLMAN			P. Leuzinger	1	E-94	0700-1900		
MAST PVT E-95 BLACK BEAR			M. Bwling	1	E-95	0700-1900		
MAST PVT E-96 STEVEN HILL			S. Hill	1	E-96	0700-1900		
MAST PVT E-97 GOLTERMAN			C. Gotterman	1	E-97	0700-1900		
MAST PVT E-104 SMITH			D. Huskey	1	E-104	0700-1900		
MAST PVT E-109 SLOWMOW			M. North	1	E-109	0700-1900		
EXC PVT E-47 KDK			K. Drew	1	E-47	0700-1900		
EXC PVT E-53 FOOTHILL			K. Kent	1	E-53	0700-1900		
EXC PVT E-61 HARDSCAPE			C. Pincher	1	E-61	0700-1900		
EXC PVT E-65 LESLIE			J. Krollor	1	E-65	0700-1900		

6. Work Assignments:
 Implement Fire Suppression repair plan.
 Identify and document fire suppression repair needs.

7. Special Instructions:

8. Communications							
Name	Ch	Function	Rx Freq	Rx Tone	Tx Freq	Tx Tone	Notes
CDF T27	7	TACTICAL	159.3075	192.8 (T16)	159.3075	192.8 (T16)	EST SRA & FSR EAST
TMU AD 2	3	COMMAND	171.5750	156.7 (T6)	165.4125	123.0 (T2)	TAHOE BASIN AEU SUPPORT
A/G TAC 2	14	AIR TO GROUND	169.2875		169.2875		A/G LOGS
CALCORD	15	MEDICAL	156.0750	156.7 (T6)	156.0750	156.7 (T6)	EMS COORDINATION ONLY
GUARD 16	16	EMERGENCY	168.6250		168.6250	110.9 (T1)	EMERGENCY USE ONLY

9. Prepared by: Name: N. Pimlott RESL
 Signature: Personnel Count: 18

ICS 204

Date/Time: 9/19/2021 2200

ASSIGNMENT LIST (ICS 204 WF)

CONTROLLED UNCLASSIFIED
INFORMATION/BASIC

1. Incident Name: AEU Caldor Support	2. Operational Period: Date From: 09/20/21 Date To: 09/21/21 Time From: 0700 Time To: 0700	3. Branch Division FSR EAST EAST
---	---	---

Page 2 of 2

4. Operations Personnel:	
Operations Section Chief: J. Vickers	Night Ops:
Branch Director: M. Scheellne (12hr)	Branch Safety:
Division/Group Supervisor: N. Ozard (12hr)	Air Attack:

5. Resources Assigned:		** Resources Below in Bold are 12 Hour **					
Resource Identifier	ALS	LWD	Leader	Personnel	Request #	Hours	Reporting Location
SKD PVT E-10 KLEE			J. Klee	1	E10	0700-1900	
CHIP PVT E-3 TIMBERSMITH				1	E-3	0700-1900	
CHIP PVT E-59 LESLIE			F. Stone	1	E-59	0700-1900	
HEQB(T) BARDWELL			J. Bardwell	1	O-36	0700-1900	
FSRS COLLAMER			S. Collamer	1	O-30	0700-1900	
FSRS SHORT			L. Short	1	O-34	0700-1900	
FSRS WHITSON			G. Whitson	1	O-35	0700-1900	
FSRS STONE			A. Stone	1	O-37	0700-1900	
FSRS(T) ALEGRIA			N. Alegria	1	O-31	0700-1900	
FSRS (T) HARCOURT			W. Harcourt	1	O-107	0700-1900	

6. Work Assignments: Implement Fire Suppression repair plan. Identify and document fire suppression repair needs.
--

7. Special Instructions:

8. Communications							
Name	Ch	Function	Rx Freq	Rx Tone	Tx Freq	Tx Tone	Notes
CDF T27	7	TACTICAL	159.3075	192.8 (T16)	159.3075	192.8 (T16)	EST SRA & FSR EAST
TMU AD 2	3	COMMAND	171.5750	156.7 (T6)	165.4125	123.0 (T2)	TAHOE BASIN AEU SUPPORT
A/G TAC 2	14	AIR TO GROUND	169.2875		169.2875		A/G LOGS
CALCORD	15	MEDICAL	156.0750	156.7 (T6)	156.0750	156.7 (T6)	EMS COORDINATION ONLY
GUARD 16	16	EMERGENCY	168.6250		168.6250	110.9 (T1)	EMERGENCY USE ONLY

9. Prepared by: Name: N. Pimlott RESL	Signature:
ICS 204	Date/Time: 9/19/2021 2200 Personnel Count: 10

