

Tuesday

INCIDENT ACTION PLAN

CALDOR INCIDENT

CA-ENF-024030
P5N8GM21



Maps, IAP, Virtual Briefing



OPERATIONAL PERIOD

9/21/2021 0700
 to
9/22/2021 0700

INCIDENT OBJECTIVES (ICS 202)

1. Incident Name: <p style="text-align: center;">CALDOR</p>	2. Operational Period:	Date From: 9/21/2021	Date To: 9/22/2021
		Time From: 0700	Time To: 0700

3. Objective(s):

Leaders Intent:
 Work effectively with cooperative partners towards a common goal of protecting values in a safe and efficient manner. All incident assigned personnel should be prepared to take appropriate actions regarding:

- Personal safety and safety of others, including driving slowly, safely, and defensively while implementing tactics that offer a high probability of success.
- Professional conduct and timely / effective communications.
- Manage fatigue by taking breaks and maintaining work rest guidelines.
- All line supervision personnel, including crew leaders and strike team leaders, must attend Operational Briefings.

Management Objectives:

- Provide for emergency personnel and public safety at all times.
- Ensure COVID-19 precautions and best practices are met at all times.
- Protect property, improvements, and infrastructure.
- Ensure accurate coordinated, timely and accurate release of public information.
- Foster and maintain relationships with all cooperators and stakeholders.
- Protect economic, natural, cultural and heritage resources.
- Mitigate or eliminate environmental resource impacts as a result of fire suppression efforts.
- Maintain fiscal accountability and keep costs commensurate with values at risk.

Control Objectives:

- Keep the fire within its currently identified perimeter and north of Highway 4 to Highway 88.
- Keep the fire within its currently identified perimeter and south of Wentworth Springs Rd, to Mosquito Pass, and road systems N16A, N20A, N08, and N21.
- Keep the fire within its currently identified perimeter and east of County Highway E16 and Fiddletown.
- Keep the fire within its currently identified perimeter and west of the El Dorado County, Alpine County and State Line boundary.

COVID Mitigations:

- All persons must wear a mask indoors at all times regardless of vaccination status, as well as outdoors when physical distancing cannot be maintained.
- Maintain a module as one, wash your hands and sanitize surfaces.

5. Site Safety Plan Required? No
Approved Site Safety Plan(s) Located at:

6. Incident Action Plan

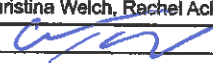
<input checked="" type="checkbox"/> ICS 203	<input type="checkbox"/> ICS 215A	<input type="checkbox"/> ICS 205 A	<input type="checkbox"/>
<input checked="" type="checkbox"/> ICS 204	<input checked="" type="checkbox"/> ICS 220	<input checked="" type="checkbox"/> Training Message	<input type="checkbox"/>
<input checked="" type="checkbox"/> ICS 205	<input checked="" type="checkbox"/> Facility Maps	<input checked="" type="checkbox"/> Travel Map	<input type="checkbox"/>
<input checked="" type="checkbox"/> ICS 206	<input checked="" type="checkbox"/> Weather Forecast	<input checked="" type="checkbox"/> Demob Plan	<input type="checkbox"/> County Health Message
<input checked="" type="checkbox"/> ICS 208	<input checked="" type="checkbox"/> Fire Behavior	<input checked="" type="checkbox"/> Finance Message	<input checked="" type="checkbox"/> ICS 214

7. Prepared By: Greg White Position/Title: PSC2 (T) Signature:

8. Approved by Incident Commander: Mike Nobles Signature:

ICS 202 NIMS IAP

ORGANIZATION ASSIGNMENT LIST (ICS 203)

1. Incident Name: CALDOR		2. Operational Period: Date From: 9/21/2021 Time From: 0700		Date To: 9/22/2021 Time To: 0700	
3. Incident Commander(s) and Command Staff:			7. Operation Section:		
IC: Mike Nobles, James Aragon(T)		Operations		Jim Snow, Mike Page(T)	
Deputy IC:		Deputy Ops		Al Ward, Chris St Pierre(T)	
Safety Officer: Paul Tompkins, Mike Seymour(T), Trenton Prins(T)		Night Operations		Mike Koontz, Luis Gomez(T)	
Information Officer: Seneca Smith, Stephanie Bishop, DeLyn Sletliet(T)					
Liaison Officer: Don Smith(T), Alan Taylor(T), Ryan Toby(T)		Branch		I	
				Robert Szczepanek	
Agency/Organization Name		Division/Group		G / T / W	
El Dorado NF - AA		Jeff Marsolais		Suppression Repair	
El Dorado NF - AA Rep.		Scot Rogers		Brad Stewart	
Lake Tahoe BMU - AA		Gwen Sanchez, Judy Palmer			
Humboldt Toiyabe NF - AA		Jon Stansfield		Branch	
CalFIRE Arep		Mike Blankenheim		III	
CalOES		Dave Stone, Kit Bailey		John Owings	
El Dorado SO		Deputy Greg Almos		I / M	
Sierra Pacific Ind.		Tim Tate		O / P	
PG&E		Mike Webb		Q	
Amador County SO		LT. Jason Navarre		R	
CHP		LT. Rick Hatfield		Suppression Repair	
Cal Trans		Greg Duffy		Rob Bertolina	
AT&T		Kevan Young		Branch	
BLM		Jerry Martinez		Night	
El Dorado Irrigation		Dan Corcoran		Night	
East Fork FPD		Larry Goss		TBD	
COVID Advisor		Greg Flory, Ben Gray		Strategic Planning	
5. Planning Section:		Division/Group		Greg Overacker, JT Sohr	
Chief: Steve Anderson, Greg White(T)		Division/Group			
Deputy: Ken Bates		Division/Group			
Resource Unit: Mike Yeun, Chris Adams, Derek Acosta(T)		Division/Group			
Situation Unit: Matt Snyder, Ray Rook(T), John Hamer (V)		Branch			
Documentation Unit: Nancy Nordensten(T)(V-RIST)		Division/Group			
Demobilization Unit: Jan Grisedale		Division/Group			
GISS: Rene Gonzalez		Division/Group			
FBAN: Dan O'Connor		Division/Group			
IMET: Patrick Gilchrist, Shawn Palmquist(T)		Division/Group			
Human Resources: Adrian Escobedo		Air Operations Branch		Director: JoAnn Overacker	
Training Specialist: Derek Parker, Morgan Madruga(T)		Air Support Group Supervisor		Rex Sundstrom(T)	
Lead READ: Emma Williams, Jennifer House		Air Tactical Group Supervisor		Todd White	
6. Logistics Section		Helibase Manager		Cammie Roy, Scott Magargee(T)	
Chief: Scott Ashbach					
Supply Unit: Ruben Lopez(T)		8. Finance/Administration Section:			
Facilities Unit: Art Curley, Wendell Simmons(T)		Chief: Lisa Wilson(V)			
Ground Support Unit: Rickey Tootle, Chris Syler		Time Unit: Rebecca Lang(T)			
Communications Unit: Mike Greene		Cost Unit:			
Medical Unit: Brandon Bennewate, Nic Stepanian		Comp/Claims Unit: Roger Waters, Tracy Nicholson (V)			
ITSS: Brett Davidson		PTRC:			
FOOD: Mikeal Gates		EQTR: Cara Scott, Christina Welch, Rachel Acker(V), Katina Bryant(V)			
Prepared By: Name: Greg White		Position/Title: PSC2 (T)		Signature: 	
ICS 203		Date/Time: 9/20/2021 2300 hours			



INCIDENT WEATHER FORECAST



FORECAST NO: 34
 PREDICTION FOR: 24 Hour Shift
 SHIFT DATE: 09/21/21
 FORECAST ISSUED: 09/20/21 1900

NAME OF FIRE: Caldor
 UNIT: USFS El Dorado NF
 SIGNED: Patrick Gilchrist
 Incident Meteorologist

WEATHER DISCUSSION: Upper level ridging will dominate today making for sunny skies and warming temperatures. East-northeast winds west of the Sierra Crest will quickly taper off during the morning as winds transition to the southwest. Thermal belts will be active from midslope to ridgetop tonight. Southwest winds will also ramp up tonight in response to an approaching weather disturbance. Hot, breezy and dry conditions will make for a heads up day on Wednesday as the disturbance passes through Oregon pushing down on the upper ridge.

...RED FLAG WARNING WEST OF THE SIERRA CREST THROUGH 1100 TODAY...

.TODAY...

Sky/weather.....Sunny.
 Max temperature.....67 to 79 above 5000 feet and 79 to 87 below 5000 feet.
 Min humidity.....13 to 18% above 5000 feet and 8 to 13% below 5000 feet.
 Wind (20 ft).....
 Slope/Valley.....East-northeast 10-15 mph becoming southwest 8-12 mph late in the morning.
 Ridgetop.....East-northeast 13-18 mph, becoming southwest late in the morning.
 Mixing height... increasing to 10000 ft MSL mid-afternoon.

.TONIGHT...

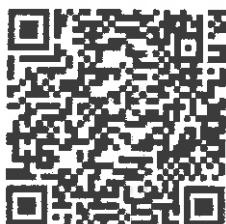
Sky/weather.....Mostly clear.
 Min temperature.....45 to 55 midslope to ridgetop. 40 to 45 valleys. (Upper 30s valleys east of the crest.)
 Max humidity.....30 to 40% midslope to ridgetop. 50 to 60% valleys.
 Wind (20 ft).....
 Sheltered valleys...Becoming downslope/downvalley 2-5 mph.
 Slope/valley.....Southwest 10-15 with gusts to 25 mph late in the evening.
 Ridgetop.....Southwest 13-18 mph, increasing to 20-25 mph with gusts to 30 mph late in the evening.

.WEDNESDAY...

Sky/weather.....Partly sunny.
 Max temperature.....64 to 76 above 5000 feet and 76 to 84 below 5000 feet.
 Min humidity.....20 to 25% above 5000 feet and 15 to 20% below 5000 feet.
 Wind (20 ft).....
 Slope/Valley.....Southwest 18-23 mph, with gusts to 35 mph.
 Ridgetop.....Southwest 23-28 mph, with gusts to 40 mph.
 Mixing height... increasing to 10000 ft MSL mid-afternoon.

Incident Weather Station Data – SCAN Code with Smart Phone
 Branch I

Branch III



FIRE BEHAVIOR FORECAST

FORECAST NUMBER: 5	TYPE OF FIRE: Vegetation
FIRE NAME: Caldor	OPERATIONAL PERIOD: Sept 21 st 24 Hour
DATE ISSUED: Sept 20 th	TIME ISSUED: 2000
UNIT: CA El Dorado National Forest/Lake Tahoe Basin Management Unit	SIGNED: Dan O'Connor Fire Behavior Analyst (FBAN)

WEATHER SUMMARY: See detailed Fire Weather Forecast in IAP

FUELS:

Fire areas include a range of conifer systems with Ponderosa, Jeffrey Pine, Incense Cedar, and manzanita in the lower elevations towards the west, transitioning up into an Upper Montane forest of Ponderosa, Lodgepole Pine and Red Fir closer to Lake Tahoe. Anticipate heavy fuel loading, drought stress, overstocked timber stands, and a lack of fire history to both the north and south of the current fire footprint. The El Dorado National Forest is currently classified as 'Extreme to Exceptional' drought by the US Drought Monitor, with Energy Release Components exceeding the 90th percentile, not far off all time high levels. Heavy dead and down fuels will likely burn completely, holding heat and actively consuming through all hours of the day. Fine dead fuel moisture is calculated at 4% or less.

EXPECTED FIRE BEHAVIOR: *Based on the Warmest, Driest, Windiest Conditions Forecasted*

<u>Maximum Spotting Distance</u> ¼ mile	Fuel Type/Model	Maximum Rate of Spread (chains/hour)	Maximum Flame Length (feet)
<u>Probability of Ignition</u> 75%	Timber understory (TU5-Overstocked and/or dense reprod)	Head 12-16 ch/hr Flank 8-10 ch/hr	Head 8-10 ft Flank 4-6 ft
	Timber litter (TL6-closed canopy, ground fuels)	Head 5-7 ch/hr Flank 2-4 ch/hr	Head 2-4 ft Flank 1-3 ft

General: Red Flag Warning expires at 1100 this morning, then very dry with lighter winds turning upslope. The mix of brush, reprod, and overstocked timber stringers will continue to hold heat, especially in rocky areas where access is difficult. Short runs with torching/spotting will continue to cause containment challenges.

SPECIFIC

Branch 1 SW flow will be mostly favorable for the western side of the fire. Potential for increased smoke production from needle cast burning interior, but should not pose threats to containment lines.

Branch 3

Divisions India and Mike have scattered heat that will produce smoke across the interiors, with more persistence in working through rocked out areas adjacent to the Desolation Wilderness. Repopulation in the Highway 50 corridor may bring an increase in service calls; potential for reburn remains in the green islands.

Divisions Quebec and Romeo fire will attempt to work all the angles to find ways to come back to life; drought stressed fuels and just enough vegetation will open up pockets of travel with low RH and shifty winds. Low probability of spread out but increased winds tomorrow will push harder for increased torching, spotting, and growth to the NE.

Divisions Oscar and Papa do have high severity fire areas in the interior, but the edges are more mosaic severity so reburning and flare ups with threats to containment lines and adjacent communities are still possible. Low relative humidity will likely have heavies and root wads burning again, producing smoke visible to residents.

Night Operations: Anticipate continuation of service calls with residents back in their homes down Highway 50. Stay vigilant with the potential for reburn in the dirty burn areas due to drought conditions.

AIR OPERATIONS:

Minimal smoke impacts to restrict air support today

SAFETY:

Very dry air with RH values in the low teens today, much stronger SW flow on Wednesday.



Health & Safety Message

Incident: CALDOR Fire CA-ENF- 024030	Date/Op Period: Day/Night Shift 9/21 - 22/21
--	--

Hazards & Risks

The Distracted Firefighter: Radios, cell phones, texting, conversations, eating, drinking, reading maps, looking at the fire.....the list goes on. It is easy to get distracted from the very task you are supposed to be focused on. Make every attempt to avoid these distractions whether you're driving or engaged in the fire fight; a brief nano-second of distraction can have disastrous results.

Wildlife & Livestock Encounters: Watch for wildlife and livestock within the fire area and along roadways. Bears are in the area, especially in the upper elevations. Avoid leaving food and trash in sleeping areas, along the fireline or at drop points. Secure your vehicles with windows up when parked in the field. Animals tend to be most active during the dawn and dusk hours when visibility is reduced on the road. Drive at "deer speed".

Air Operations: With air operations over the fire; both fixed and rotary wing aircraft, comes a unique set of hazards and risks. Reference the blue pages in your IRPG. Consider mission need and aviation risk factors. Establish good communications with the aircraft and ensure ground personnel are aware of sling loads (and sites), retardant and water dropping operations.

Review Aviation Watch Out Situations!

Firefighter Health: With multiple days of working on the fireline; cuts, abrasions, rashes and blisters are accumulating on your body. Prevent infections by washing your hands often, take daily showers, wash or change your clothes frequently and care for minor wounds each shift. Treatment early-on will help prevent larger medical problems later!

Paul Tompkins SOF2

**L. Lookouts C. Communications E. Escape Routes S. Safety Zones
BE MINDFUL**

ASSIGNMENT LIST (ICS 204 WF)

CONTROLLED UNCLASSIFIED
INFORMATION/BASIC

1. Incident Name: <p style="text-align: center;">CALDOR</p>	2. Operational Period: Date From: 09/21/21 Date To: 09/22/21 Time From: 0700 Time To: 0700	3. Branch Division <p style="text-align: center;">I G / T / W</p>
4. Operations Personnel:		Page 1 of 1

Operations Section Chief: **Jim Snow, Mike Page(T)**
 Branch Director: **Robert Szczepanek**
 Division/Group Supervisor: **Kevin Reese, Kevin Dejong(T), Charles Zimmerma**
 Night Ops: **Mike Koontz, Luis Gomez(T)**
 Deputy Ops: **Al Ward, Chris St Pierre(T)**
 Air Attack: **Todd White**


5. Resources Assigned:		** Resources Below in Bold are 12 Hour **					
Resource Identifier	ALS	LWD	Leader	Personnel	Request #	Hours	Reporting Location
HC2 BLUE MOUNTAIN		10/3	CROW	20	C-50061	0700-1900	8 Mile Camp
ENG3 NV-B5331		9/30	ARROYO	4	E-50207	0700-1900	8 Mile Camp
ENG3 ROCKY MTN		9/30	STREHLE	3	E-50206	0700-1900	8 Mile Camp
ENG4 HEART VENTURES 1		9/30	WETZEL	3	E-50193	0700-1900	8 Mile Camp
ENG6 J3 CONTRACTING		10/3	EASLEY	3	E-50275	0700-1900	8 Mile Camp
ENG6 WHITEGRASS FIRE		9/30	WHITEGRASS	3	E-50266	0700-1900	8 Mile Camp
ENG6 GOODING		9/30	MCKINNEY	2	E-50199	0700-1900	8 Mile Camp
ENG6 RED DOG		9/30	ENGLAND	3	E-50205	0700-1900	8 Mile Camp
ENG6 SCHOLL FIRE & FUEL		10/3	MAHARREY	3	E-50291	0700-1900	8 Mile Camp
ENG6 COOPER CONTRACTING		10/3	MEDRANO	3	E-50292	0700-1900	8 Mile Camp
WTT2 AWB		9/30	KEENE	2	E-20009	0700-1900	8 Mile Camp
WTS3 AZ-PTP		10/2	FINCH	2	E-50242	0700-1900	8 Mile Camp
SKD SOFT TRACK ATTACK		10/4	EMERY	1	E-246	0700-1900	8 Mile Camp
SOFR BARNHART		9/25	BARNHART	1	O-20796	0700-1900	8 Mile Camp
SOFR KAMNIKAR		9/24	KAMINKAR	1	O-20794	0700-1900	8 Mile Camp
EMPF DIEM	X	9/30	DIEM	1	O-50312	0700-1900	8 Mile Camp
EMPF STAPLES	X	9/22	STAPLES	1	E-50129	0700-1900	8 Mile Camp
EMPF HANNA	X	9/22	HANNA	1	E-50129	0700-1900	8 Mile Camp
EMTF MAKEMSON		9/30	MAKEMSON	1	O-50317	0700-1900	8 Mile Camp

6. Work Assignments:
 TASK: Secure existing line and provide for tactical patrol within the Hwy 50 corridor. Mop up to the extent necessary on the fires edge and within the perimeter where infrastructure and values at risk are present
 PURPOSE: Minimize any fire progression and ensure the safety of those working on the west side of Mormon Emigrant Trail
 END STATE: Fires edge in the division is controlled and escape is improbable

7. Special Instructions:
 Backhaul trash, excess supplies and provide a location for accountable property
 Identify and coordinate the removal of hazard trees
 Resources denoted with * is identified as I/A resources within the TFR
 Resources need to report to 8 Mile Camp (4260 8 Mile Rd, Camino, CA 95709) for briefing and end of shift

8. Communications

Name	Ch	Function	Rx Freq	Rx Tone	Tx Freq	Tx Tone	Notes
COMMAND SEE ICS 205	1	COMMAND					
NIFC T1	8	TACTICAL	168.0500N		168.0500N		
A/G CMD	14	A/G CMD	167.9500N		167.9500N		
CALCORD	15	COORDINATION	156.0750N	156.7	156.0750N	156.7	
GUARD 16	16	EMERGENCY	168.6250N		168.6250N	110.9	

9. Prepared by: Name: Mike Yeun, Chris Adams, Derek Acosta(T) RESL
 Signature: 
 Date/Time: 9/20/2021 2200 Personnel Count: 57

ASSIGNMENT LIST (ICS 204 WF)

CONTROLLED UNCLASSIFIED
INFORMATION//BASIC

1. Incident Name: <p style="text-align: center; font-weight: bold;">CALDOR</p>	2. Operational Period: Date From: 09/21/21 Date To: 09/22/21 Time From: 0700 Time To: 0700	3. Branch Division <p style="text-align: center; font-size: 2em; font-weight: bold;">I</p> <p style="text-align: center; font-weight: bold;">Suppression Repair</p>
4. Operations Personnel:		Page 1 of 4

Operations Section Chief: Jim Snow, Mike Page(T) Branch Director: Robert Szczepanek Division/Group Supervisor: Brad Stewart	Night Ops: Mike Koontz, Luis Gomez(T) Deputy Ops Al Ward, Chris St Pierre(T) Air Attack: Todd White
--	--

5. Resources Assigned:	** Resources Below in Bold are 12 Hour **							
Resource Identifier	ALS	LWD	Leader	Personnel	Request #	Hours	Reporting Location	
TFLD LOWELL		9/29	LOWELL	1	O-568	0700-1900	8 Mile Camp	
TFLD(T) GRAY		9/30	GRAY	1	O-50160	0700-1900	8 Mile Camp	
HEQB SMITH		9/27	SMITH	1	O-562	0700-1900	8 Mile Camp	
GROUP #1 MET								
FEL1 SIERRA NEVADA		9/30	D. WASS	1	E-699	0700-1900	8 Mile Camp	
EXCA2 LONESTAR ENT		9/30	MILLER	2	E-50231	0700-1900	8 Mile Camp	
SKD SIERRA FOREST 2		9/30	J. WASS	1	E-705	0700-1900	8 Mile Camp	
SKD SIERRA FOREST 3		9/30	DUARTE	1	E-706	0700-1900	8 Mile Camp	
LOAD SIERRA NEVADA 2		9/30	DIBBLE	1	E-50173	0700-1900	8 Mile Camp	
PROC PATHFINDER		9/30	FULTON	1	E-730	0700-1900	8 Mile Camp	
FAL1 HERREN		9/22	HERREN	2	O-532	0700-1900	8 Mile Camp	
GROUP #2 MET								
FEL1 PATHFINDER		9/30	SMITH	2	E-702	0700-1900	8 Mile Camp	
SKD SIERRA FOREST 1		9/30	MARTIN	1	E-704	0700-1900	8 Mile Camp	
SKD SIERRA FOREST 5		9/30	MARVIN	1	E-708	0700-1900	8 Mile Camp	
LOAD SIERRA NEVADA 1		9/30	STANDBRIDGE	1	E-50172	0700-1900	8 Mile Camp	
LOAD ROMINE TIMBER 2				1	E-725	0700-1900	8 Mile Camp	
FMOD A&F ENTERPRISES 1		9/27	PAFFORD	2	O-234	0700-1900	8 Mile Camp	

6. Work Assignments:
 TASK: Perform priority suppression repair work within Branch 1. Repair Wrights Lake Road and perform Hazard Tree Removal along Mormon Emigrant Trail and Sierra @ Tahoe. Coordinate with CALFIRE AEU and USFS REAFs to ensure work is efficiently managed
 PURPOSE: Minimize any near-term environmental resource impacts as a result of fire suppression efforts
 END STATE: Watershed and areas adjacent to values at risk are protected using the approved standard

7. Special Instructions:
 Backhaul trash, excess supplies and provide a location for accountable property
 Identify and coordinate the removal of hazard trees
 Resources denoted with * is identified as I/A resources within the TFR
 Resources need to report to 8 Mile Camp (4260 8 Mile Rd, Camino, CA 95709) for briefing and end of shift

8. Communications

Name	Ch	Function	Rx Freq	Rx Tone	Tx Freq	Tx Tone	Notes
COMMAND SEE ICS 205	1	COMMAND					
NIFC T6	9	TACTICAL	166.7750N		166.7750N		
A/G CMD	14	A/G CMD	167.9500N		167.9500N		
CALCORD	15	COORDINATION	156.0750N	156.7	156.0750N	156.7	
GUARD 16	16	EMERGENCY	168.6250N		168.6250N	110.9	

9. Prepared by: Name:	Mike Yeun, Chris Adams, Derek Acosta(T)	RESL	Signature:
ICS 204	Date/Time: 9/20/2021 2200	Personnel Count: 20	

ASSIGNMENT LIST (ICS 204 WF)

CONTROLLED UNCLASSIFIED
INFORMATION//BASIC

1. Incident Name: <p style="text-align: center; font-weight: bold;">CALDOR</p>		2. Operational Period: Date From: 09/21/21 Date To: 09/22/21 Time From: 0700 Time To: 0700				3. Branch Division <p style="text-align: center; font-size: 2em; font-weight: bold;">I Suppression Repair</p>	
4. Operations Personnel: Operations Section Chief: Jim Snow, Mike Page(T) Branch Director: Robert Szczepanek Division/Group Supervisor: Brad Stewart		Night Ops: Mike Koontz, Luis Gomez(T) Deputy Ops: Al Ward, Chris St Pierre(T) Air Attack: Todd White				Page 2 of 4	
5. Resources Assigned:		** Resources Below in Bold are 12 Hour **					
Resource Identifier	ALS	LWD	Leader	Personnel	Request #	Hours	Reporting Location
GROUP #3 GRINDING							
GRND ARBORWORKS		9/30	MEALIN	1	E-731	0700-1900	8 Mile Camp
LOAD BAMFORD 1		9/29	MONTGOMERY	1	E-720	0700-1900	8 Mile Camp
LOAD SIERRA FOREST		9/30	LANGLEY	1	E-50159	0700-1900	8 Mile Camp
LOAD BAMFORD 3		9/29	MONTGOMERY	1	E-723	0700-1900	8 Mile Camp
GROUP #4 SKI RESORT							
TFLD(T) WARD			WARD	1	O-545	0700-1900	8 Mile Camp
FEL2 J&R LOGGING		9/30	JIMENEZ	1	E-50151	0700-1900	8 Mile Camp
PROC J&R LOGGING		9/30	JIMENEZ	1	E-50150	0700-1900	8 Mile Camp
SKD SIERRA FOREST 4		9/30	CAMPBELL	1	E-707	0700-1900	8 Mile Camp
SKD J&R LOGGING		10/1	JIMENEZ	1	E-712	0700-1900	8 Mile Camp
SKD T1 CECIL LOGGING		9/29	HUNTER	1	E-50153	0700-1900	8 Mile Camp
LOAD BAMFORD 2		9/29	MONTGOMERY	1	E-721	0700-1900	8 Mile Camp
6. Work Assignments:							
TASK: Perform priority suppression repair work within Branch 1. Repair Wrights Lake Road and perform Hazard Tree Removal along Mormon Emigrant Trail and Sierra @ Tahoe. Coordinate with CALFIRE AEU and USFS REAFs to ensure work is efficiently managed							
PURPOSE: Minimize any near-term environmental resource impacts as a result of fire suppression efforts							
END STATE: Watershed and areas adjacent to values at risk are protected using the approved standard							
7. Special Instructions:							
Backhaul trash, excess supplies and provide a location for accountable property							
Identify and coordinate the removal of hazard trees							
Resources denoted with * is identified as I/A resources within the TFR							
Resources need to report to 8 Mile Camp (4260 8 Mile Rd, Camino, CA 95709) for briefing and end of shift							
8. Communications							
Name	Ch	Function	Rx Freq	Rx Tone	Tx Freq	Tx Tone	Notes
COMMAND SEE ICS 205	1	COMMAND					
NIFC T6	9	TACTICAL	166.7750N		166.7750N		
A/G CMD	14	A/G CMD	167.9500N		167.9500N		
CALCORD	15	COORDINATION	156.0750N	156.7	156.0750N	156.7	
GUARD 16	16	EMERGENCY	168.6250N		168.6250N	110.9	
9. Prepared by: Name:		Mike Yeun, Chris Adams, Derek Acosta(T)		RESL		Signature:	
ICS 204		Date/Time: 9/20/2021 2200		Personnel Count: 11			

ASSIGNMENT LIST (ICS 204 WF)

CONTROLLED UNCLASSIFIED
INFORMATION/BASIC

1. Incident Name: <p style="text-align: center;">CALDOR</p>	2. Operational Period: Date From: 09/21/21 Date To: 09/22/21 Time From: 0700 Time To: 0700	3. Branch Division <p style="text-align: center;">I Suppression Repair</p>
--	---	--

Page 3 of 4

4. Operations Personnel: Operations Section Chief: Jim Snow, Mike Page(T) Branch Director: Robert Szczepanek Division/Group Supervisor: Brad Stewart	Night Ops: Mike Koontz, Luis Gomez(T) Deputy Ops: Al Ward, Chris St Pierre(T) Air Attack: Todd White
---	---

5. Resources Assigned:	** Resources Below in Bold are 12 Hour **						
Resource Identifier	ALS	LWD	Leader	Personnel	Request #	Hours	Reporting Location
GROUP #5 WRIGHTS LAKE							
HEQB(T) GOTTS			GOTTS	1	O-541	0700-1900	8 Mile Camp
HEQB(T) APACHITO			APACHITO	1	O-550	0700-1900	8 Mile Camp
* DOZ2 ENF 3		9/21	STARK	3	E-200	0700-1900	8 Mile Camp
DOZ2 HERTZIG		9/27	HERTZIG	1	E-101	0700-1900	8 Mile Camp
DOZ3 TOM'S EARTHMOVING		9/30	FUNES	2	E-50239	0700-1900	8 Mile Camp
* EXCA ENF 7462		9/26	LANGENDERFER	1	E-728	0700-1900	8 Mile Camp
EXCA VENTANA RANCH		9/25	LOVERTON	1	E-689	0700-1900	8 Mile Camp
EXCA EMERSON		9/25	SHERRILL	1	E-50154	0700-1900	8 Mile Camp
EXCA INGRAM		9/24	WHEELER	1	E-50155	0700-1900	8 Mile Camp
EXCA BRUCE YOUNG		10/1	YOUNG	1	E-241	0700-1900	8 Mile Camp
MAST PVT (E-58)			FINDLETON	1	E-58	0700-1900	8 Mile Camp
SKDG DC FIRE		10/2	MARTIN	2	E-247	0700-1900	8 Mile Camp

6. Work Assignments:
 TASK: Perform priority suppression repair work within Branch 1. Repair Wrights Lake Road and perform Hazard Tree Removal along Mormon Emigrant Trail and Sierra @ Tahoe. Coordinate with CALFIRE AEU and USFS REAFs to ensure work is efficiently managed
 PURPOSE: Minimize any near-term environmental resource impacts as a result of fire suppression efforts
 END STATE: Watershed and areas adjacent to values at risk are protected using the approved standard

7. Special Instructions:
 Backhaul trash, excess supplies and provide a location for accountable property
 Identify and coordinate the removal of hazard trees
 Resources denoted with * is identified as I/A resources within the TFR
 Resources need to report to 8 Mile Camp (4260 8 Mile Rd, Camino, CA 95709) for briefing and end of shift

8. Communications

Name	Ch	Function	Rx Freq	Rx Tone	Tx Freq	Tx Tone	Notes
COMMAND SEE ICS 205	1	COMMAND					
NIFC T6	9	TACTICAL	166.7750N		166.7750N		
A/G CMD	14	A/G CMD	167.9500N		167.9500N		
CALCORD	15	COORDINATION	156.0750N	156.7	156.0750N	156.7	
GUARD 16	16	EMERGENCY	168.6250N		168.6250N	110.9	

9. Prepared by: Name:	Mike Yeun, Chris Adams, Derek Acosta(T)	RESL	Signature:
ICS 204	Date/Time: 9/20/2021 2200	Personnel Count: 16	

ASSIGNMENT LIST (ICS 204 WF)

CONTROLLED UNCLASSIFIED
INFORMATION/BASIC

1. Incident Name: <p style="text-align: center;">CALDOR</p>	2. Operational Period: Date From: 09/21/21 Date To: 09/22/21 Time From: 0700 Time To: 0700	3. Branch Division <p style="text-align: center;">I Suppression Repair</p> <p style="text-align: center;">Page 4 of 4</p>
--	---	--

4. Operations Personnel: Operations Section Chief: Jim Snow, Mike Page(T) Branch Director: Robert Szczepanek Division/Group Supervisor: Brad Stewart	Night Ops: Mike Koontz, Luis Gomez(T) Deputy Ops: Al Ward, Chris St Pierre(T) Air Attack: Todd White
---	---

5. Resources Assigned:	** Resources Below in Bold are 12 Hour **							
Resource Identifier	ALS	LWD	Leader	Personnel	Request #	Hours	Reporting Location	
GROUP #6 WOOD MOVERS								
TFLD HUMBACH			HUMBACH	1	O-566	0700-1900	8 Mile Camp	
TFLD(T) BERKE			BERKE	1	O-576	0700-1900	8 Mile Camp	
HC2 MOUNTAINEER MT2		9/26	WENCESLAO	20	C-50043	0700-1900	8 Mile Camp	
CHIP WOOD CHUCK		9/25	TINGLER	1	E-50174	0700-1900	8 Mile Camp	
LOG TRK VOLCANO CREEK			ELLIOT	1	E-50156	0700-1900	8 Mile Camp	
LOG TRK ARBORWORKS		9/27	YOUNGREN	1	E-50157	0700-1900	8 Mile Camp	
LOG RIDGE LOGGING		9/30	SLACK	1	E-737	0700-1900	8 Mile Camp	
LOG HEAVYHAUL		9/30	LESLIE	1	E-738	0700-1900	8 Mile Camp	
EXCA WEST WOOD		9/26	WEST	2	E-232	0700-1900	8 Mile Camp	
EXCA COTTONWOOD		9/29	HARTLEY	2	E-687	0700-1900	8 Mile Camp	
EXCA CLAYTON		9/30	TITTLE	2	E-50228	0700-1900	8 Mile Camp	
WTS1 ASAP		10/2	DIXON	2	E-20015	0700-1900	8 Mile Camp	
SKD T1 FORKNER		9/25	DIAL	2	E-50152	0700-1900	8 Mile Camp	
LOAD HEAVYHAUL		9/29	LESLIE	2	E-50226	0700-1900	8 Mile Camp	
LOAD ROMINE TIMBER 1				1	E-724	0700-1900	8 Mile Camp	
FAL1 A&F ENTERPRISES		10/4	BOKISH	1	O-50088	0700-1900	8 Mile Camp	
FAL1 MOEN TIMBER FALLING		10/4	MOEN	1	O-50089	0700-1900	8 Mile Camp	
ARCH COOPER			COOPER	1	O-180	0700-1900	8 Mile Camp	
ARCH(T) MARTI			MARTI	1	O-572	0700-1900	8 Mile Camp	

6. Work Assignments:
 TASK: Perform priority suppression repair work within Branch 1. Repair Wrights Lake Road and perform Hazard Tree Removal along Mormon Emigrant Trail and Sierra @ Tahoe. Coordinate with CALFIRE AEU and USFS REAFs to ensure work is efficiently managed
 PURPOSE: Minimize any near-term environmental resource impacts as a result of fire suppression efforts
 END STATE: Watershed and areas adjacent to values at risk are protected using the approved standard

7. Special Instructions:
 Backhaul trash, excess supplies and provide a location for accountable property
 Identify and coordinate the removal of hazard trees
 Resources denoted with * is identified as I/A resources within the TFR
 Resources need to report to 8 Mile Camp (4260 8 Mile Rd, Camino, CA 95709) for briefing and end of shift

8. Communications

Name	Ch	Function	Rx Freq	Rx Tone	Tx Freq	Tx Tone	Notes
COMMAND SEE ICS 205	1	COMMAND					
NIFC T6	9	TACTICAL	166.7750N		166.7750N		
A/G CMD	14	A/G CMD	167.9500N		167.9500N		
CALCORD	15	COORDINATION	156.0750N	156.7	156.0750N	156.7	
GUARD 16	16	EMERGENCY	168.6250N		168.6250N	110.9	

9. Prepared by: Name:	Mike Yeun, Chris Adams, Derek Acosta(T)	RESL	Signature:
ICS 204	Date/Time: 9/20/2021 2200	Personnel Count: 41	

ASSIGNMENT LIST (ICS 204 WF)

CONTROLLED UNCLASSIFIED
INFORMATION/BASIC

1. Incident Name: <p style="text-align: center;">CALDOR</p>	2. Operational Period: Date From: 09/21/21 Date To: 09/22/21 Time From: 0700 Time To: 0700	3. Branch Division <p style="text-align: center;">III I / M</p>
--	---	---

Page 1 of 2

4. Operations Personnel: Operations Section Chief: Jim Snow, Mike Page(T) Branch Director: John Owings Division/Group Supervisor: Jason Flores	Night Ops: Mike Koontz, Luis Gomez(T) Deputy Ops Al Ward, Chris St Pierre(T) Air Attack: Todd White
---	--

5. Resources Assigned:	** Resources Below in Bold are 12 Hour **						
Resource Identifier	ALS	LWD	Leader	Personnel	Request #	Hours	Reporting Location
WFM BLACK HILLS		9/24	DUEKEER	10	E-50208	0700-1900	HEAVENLY ICP
SMOD NMCIF ACOMA 2		9/23	CARABAJAL	16	O-50194	0700-1900	HEAVENLY ICP
T/F OES 6411T		9/21	HARRIS	20	E-20239	0700-1900	HEAVENLY ICP
ENG3 CCD 3363		9/30	WILLIAMS	5	E-50196	0700-1900	HEAVENLY ICP
ENG3 DS FIRE SUPPRESSION		9/27	DAGNELL	3	E-50161	0700-1900	HEAVENLY ICP
ENG3 NWS 1667		9/28	ARNDT	6	E-50177	0700-1900	HEAVENLY ICP
ENG3 TIMBERLINE		10/3	ANTONIO	3	E-50287	0700-1900	HEAVENLY ICP
ENG4 DUKE CITY 401		10/3	LAKE	3	E-50276	0700-1900	HEAVENLY ICP
ENG6 TX-TXF E641		9/27	UAL	4	E-466	0700-1900	HEAVENLY ICP
ENG6 FIRECO LLC		10/3	DOUGLASS	3	E-50282	0700-1900	HEAVENLY ICP
ENG6 METHOW RIVER 11		10/3	BELL	3	E-50277	0700-1900	HEAVENLY ICP
ENG6 HECK OF A FIRE		10/3	HECK	3	E-50220	0700-1900	HEAVENLY ICP
ENG6 METAL WORKS		10/3	SOUTHWICK	3	E-50281	0700-1900	HEAVENLY ICP
ENG6 FLASHOVER		10/2	VINCENT	3	E-50209	0700-1900	HEAVENLY ICP
WTS2 MARTIN		10/3	MARTIN	1	E-50241	0700-1900	HEAVENLY ICP
WTS3 RAVEN FIRE LLC		10/2	GADSBY	1	E-50249	0700-1900	HEAVENLY ICP
WTS3 BUSCHER ENGINES		10/3	BUSCHER	1	E-50289	0700-1900	HEAVENLY ICP

6. Work Assignments:
 TASK: Utilize natural barriers as containment lines to limit fire spread
 Provide for perimeter control near the communities of Wrights Lake and Echo Lakes
 Mop to the extent necessary on the fires edge and provide for tactical patrol to the communities affected along Hwy 50
 PURPOSE: Minimize any fire progression and ensure the safety of those working north of Hwy 50
 END STATE: Fires edge in the division is controlled and escape is improbable

7. Special Instructions:
 Backhaul trash, excess supplies and provide a location for accountable property
 Identify and coordinate the removal of hazard trees
 Resources denoted with * is identified as I/A resources within the TFR
 Medic 60, ALS Ambulance for Highway 50 patrol
 Resources need to report to Heavenly ICP (3860 Saddle Rd., South Lake Tahoe, CA 96150) for briefing and end of shift

8. Communications							
Name	Ch	Function	Rx Freq	Rx Tone	Tx Freq	Tx Tone	Notes
COMMAND SEE ICS 205	1	COMMAND					
NIFC T1	6	TACTICAL	168.0500N		168.0500N		
A/G CMD	14	A/G CMD	167.9500N		167.9500N		
CALCORD	15	COORDINATION	156.0750N	156.7	156.0750N	156.7	
GUARD 16	16	EMERGENCY	168.6250N		168.6250N	110.9	

9. Prepared by: Name: Mike Yeun, Chris Adams, Derek Acosta(T)	RESL	Signature:
ICS 204	Date/Time: 9/20/2021 2200	Personnel Count: 88

ASSIGNMENT LIST (ICS 204 WF)

CONTROLLED UNCLASSIFIED
INFORMATION/BASIC

1. Incident Name: <p style="text-align: center; font-weight: bold;">CALDOR</p>	2. Operational Period: Date From: 09/21/21 Date To: 09/22/21 Time From: 0700 Time To: 0700	3. Branch Division <p style="text-align: center; font-size: 1.5em; font-weight: bold;">III I / M</p>
4. Operations Personnel:		Page 2 of 2

Operations Section Chief: Jim Snow, Mike Page(T) Branch Director: John Owings Division/Group Supervisor: Jason Flores	Night Ops: Mike Koontz, Luis Gomez(T) Deputy Ops Al Ward, Chris St Pierre(T) Air Attack: Todd White
--	--

5. Resources Assigned:	** Resources Below in Bold are 12 Hour **							
Resource Identifier	ALS	LWD	Leader	Personnel	Request #	Hours	Reporting Location	
FAL1 CTL BLAIR		9/29	BLAIR	1	O-50346	0700-1900	HEAVENLY ICP	
FAL1 CTL ELDERD		9/29	ELDERD	1	O-50347	0700-1900	HEAVENLY ICP	
FAL1 CTL WHITE		9/29	WHITE	1	O-50348	0700-1900	HEAVENLY ICP	
FAL1 CTL GREEN		9/29	GREEN	1	O-50349	0700-1900	HEAVENLY ICP	
FAL1 CTL HOLLAND		9/29	HOLLAND	1	O-50350	0700-1900	HEAVENLY ICP	
SKD2 CTL FOREST MGMT		9/29	KREGOSKI	6	E-50188	0700-1900	HEAVENLY ICP	
LOAD CTL FOREST MGMT 1		9/29	KREGOSKI	6	E-50189	0700-1900	HEAVENLY ICP	
LOAD CTL FOREST MGMT 2		9/29	KREGOSKI	6	E-50187	0700-1900	HEAVENLY ICP	
TFLD OOSAHWE		9/29	OOSAHWE	1	O-50290	0700-1900	HEAVENLY ICP	
FMOD UNDERDOG 3		9/25	RILEY	2	O-50086	0700-1900	HEAVENLY ICP	
EMPF CRUMPACKER	X	9/27	CRUMPACKER	1	O-50263	0700-1900	HEAVENLY ICP	
EMPF VASQUEZ	X	9/30	VASQUEZ	1	O-50379	0700-1900	HEAVENLY ICP	
EMPF BUBEN	X	9/27	BUBEN	1	O-50170	0700-1900	HEAVENLY ICP	
EMTF FLANDERS		9/27	FLANDERS	1	O-50276	0700-1900	HEAVENLY ICP	
REAF FOULK		9/29	FOULK	1	O-181	0700-1900	HEAVENLY ICP	

6. Work Assignments:
 TASK: Utilize natural barriers as containment lines to limit fire spread
 Provide for perimeter control near the communities of Wrights Lake and Echo Lakes
 Mop to the extent necessary on the fires edge and provide for tactical patrol to the communities affected along Hwy 50
 PURPOSE: Minimize any fire progression and ensure the safety of those working north of Hwy 50
 END STATE: Fires edge in the division is controlled and escape is improbable

7. Special Instructions:
 Backhaul trash, excess supplies and provide a location for accountable property
 Identify and coordinate the removal of hazard trees
 Resources denoted with * is identified as I/A resources within the TFR
 Medic 60, ALS Ambulance for Highway 50 patrol
 Resources need to report to Heavenly ICP (3860 Saddle Rd., South Lake Tahoe, CA 96150) for briefing and end of shift

8. Communications							
Name	Ch	Function	Rx Freq	Rx Tone	Tx Freq	Tx Tone	Notes
COMMAND SEE ICS 205	1	COMMAND					
NIFC T1	6	TACTICAL	168.0500N		168.0500N		
A/G CMD	14	A/G CMD	167.9500N		167.9500N		
CALCORD	15	COORDINATION	156.0750N	156.7	156.0750N	156.7	
GUARD 16	16	EMERGENCY	168.6250N		168.6250N	110.9	

9. Prepared by: Name: Mike Yeun, Chris Adams, Derek Acosta(T) RESL
 Signature:
ICS 204 Date/Time: 9/20/2021 2200 Personnel Count: 31

ASSIGNMENT LIST (ICS 204 WF)

CONTROLLED UNCLASSIFIED
INFORMATION//BASIC

1. Incident Name: <p style="text-align: center;">CALDOR</p>	2. Operational Period: Date From: 09/21/21 Date To: 09/22/21 Time From: 0700 Time To: 0700	3. Branch Division <p style="text-align: center;">III O / P</p>
4. Operations Personnel:		Page 1 of 2

Operations Section Chief: Jim Snow, Mike Page(T) Branch Director: John Owings Division/Group Supervisor: Rob Noxon	Night Ops: Mike Koontz, Luis Gomez(T) Deputy Ops: Al Ward, Chris St Pierre(T) Air Attack: Todd White
---	---

5. Resources Assigned:		** Resources Below in Bold are 12 Hour **					
Resource Identifier	ALS	LWD	Leader	Personnel	Request #	Hours	Reporting Location
HC2 BIRRUETA REFORESTATION		10/1	BIRREUTA	20	C-50060	0700-1900	HEAVENLY ICP
HC2 VA INTERAGENCY 01		10/2	FREEMAN	21	C-50063	0700-1900	HEAVENLY ICP
* T/F BASIN		9/25	KING	10	E-50090	0700-1900	HEAVENLY ICP
* ENG3 TMU E341		9/29	KING	3	E-50090	0700-1900	HEAVENLY ICP
* ENG3 TMU E344		10/3	AULD	5	E-50274	0700-1900	HEAVENLY ICP
ENG3 B5121		10/2	BRANDEBURG	2	E-50268	0700-1900	HEAVENLY ICP
ENG3 MT-NWS 1262		9/30	WARD	3	E-50203	0700-1900	HEAVENLY ICP
ENG3 J3 CONTRACTING 1		9/30	WALLACE	3	E-50215	0700-1900	HEAVENLY ICP
ENG3 TNF E361		9/26	OKERMAN	5	E-50279	0700-1900	HEAVENLY ICP
ENG4 SUNDANCE FIRE		10/3	TIERNEY	3	E-50283	0700-1900	HEAVENLY ICP
ENG4 J3 CONSTRUCTION		9/24	STEENHUIZEN	3	E-21269	0700-1900	HEAVENLY ICP
ENG5 YABOY		9/28	BAWER	3	E-50178	0700-1900	HEAVENLY ICP
ENG6 E2628		9/30	SPARGO	2	E-50212	0700-1900	HEAVENLY ICP
ENG6 MT-E646		10/4	MCHUGH	3	E-50204	0700-1900	HEAVENLY ICP

6. Work Assignments:
 TASK: Provide for a tactical patrol and respond to any calls for service.
 Mop up to the extent necessary on the fires edge and within the perimeter where infrastructure and values at risk are present.
 PURPOSE: Minimize any fire progression, keeping the fire within its current footprint
 END STATE: Fires edge in the division is controlled and escape is improbable

7. Special Instructions:
 Backhaul trash, excess supplies and provide a location for accountable property
 Identify and coordinate the removal of hazard trees
 Resources denoted with * is identified as I/A resources within the TFR
 Resources need to report to Heavenly ICP (3860 Saddle Rd., South Lake Tahoe, CA 96150) for briefing and end of shift

8. Communications

Name	Ch	Function	Rx Freq	Rx Tone	Tx Freq	Tx Tone	Notes
COMMAND SEE ICS 205	1	COMMAND					
NIFC T6	7	TACTICAL	166.7750N		166.7750N		
A/G CMD	14	A/G CMD	167.9500N		167.9500N		
CALCORD	15	COORDINATION	156.0750N	156.7	156.0750N	156.7	
GUARD 16	16	EMERGENCY	168.6250N		168.6250N	110.9	

9. Prepared by: Name:	Mike Yeun, Chris Adams, Derek Acosta(T)	RESL	Signature:
ICS 204	Date/Time: 9/20/2021 2200	Personnel Count: 86	

ASSIGNMENT LIST (ICS 204 WF)

CONTROLLED UNCLASSIFIED
INFORMATION/BASIC

1. Incident Name: <p style="text-align: center; font-weight: bold;">CALDOR</p>		2. Operational Period: Date From: 09/21/21 Date To: 09/22/21 Time From: 0700 Time To: 0700				3. Branch <p style="text-align: center; font-size: 2em; font-weight: bold;">III</p>		Division <p style="text-align: center; font-size: 2em; font-weight: bold;">Q</p>	
4. Operations Personnel: Operations Section Chief: Jim Snow, Mike Page(T) Branch Director: John Owings Division/Group Supervisor: Kristian Litz, Andy Wordin(T)		Night Ops: Mike Koontz, Luis Gomez(T) Deputy Ops: Al Ward, Chris St Pierre(T) Air Attack: Todd White				Page 1 of 2		Quebec	
5. Resources Assigned:		** Resources Below in Bold are 12 Hour **							
Resource identifier	ALS	LWD	Leader	Personnel	Request #	Hours	Reporting Location		
HC1 TALLAC IHC		9/22	BETTY	20	C-50001	0700-1900	HEAVENLY ICP		
* HC1 EL DORADO IHC		9/21	STRAHN	20	C-50020	0700-1900	HEAVENLY ICP		
HC2IA TANANA CHIEFS		9/27	SIMPLE	18	C-104	0700-1900	HEAVENLY ICP		
HC2IA WHITE MOUNTAIN		9/26	STANSEL	21	C-107	0700-1900	HEAVENLY ICP		
HC2IA SAFFORD		9/22	ROMERO	19	C-50016	0700-1900	HEAVENLY ICP		
HC2IA SLIDE MOUNTAIN		9/26	HIGGINS	21	C-50049	0700-1900	HEAVENLY ICP		
HC2IA ZEPHYR		9/26	FOGARTY	20	C-50050	0700-1900	HEAVENLY ICP		
HC2IA TD CREW 21		9/28	ZINK	14	C-50053	0700-1900	HEAVENLY ICP		
* HC2IA IRON MOUNTAIN 31		9/30	MCKURTIS	18	C-50062	0700-1900	HEAVENLY ICP		
HC2 RIFLE PEAK		9/28	ELLIS	21	C-50054	0700-1900	HEAVENLY ICP		
HC2 HVP 51		10/1	RITZMAN	18	C-50058	0700-1900	HEAVENLY ICP		
HC2 FRANCO 2		10/3	ALVAREZ	20	C-111	0700-1900	HEAVENLY ICP		
ENG3 AZ-CENTRAL 66		10/1	KONTZ	4	E-50269	0700-1900	HEAVENLY ICP		
ENG3 AZ-SUM		10/2	GLAZENER	3	E-50270	0700-1900	HEAVENLY ICP		
ENG4 EKD		9/22	KRENKA	4	E-50213	0700-1900	HEAVENLY ICP		
ENG4 HEART VENTURES 2		10/3	BLACKCROW	3	E-50280	0700-1900	HEAVENLY ICP		
ENG4 IDAHO HEATSEEKER		10/3	JOHNSON	3	E-50290	0700-1900	HEAVENLY ICP		
ENG6 NBF 661		10/2	JONES	3	E-50222	0700-1900	HEAVENLY ICP		
ENG6 ALPINE WILDFIRE		10/1	LARSON	3	E-21103	0700-1900	HEAVENLY ICP		
ENG6 PEANUT PIE		10/2	GOOD GUN	3	E-50219	0700-1900	HEAVENLY ICP		
ENG6 OC FORESTRY		10/4	ABEL	3	E-50293	0700-1900	HEAVENLY ICP		
6. Work Assignments: TASK: Secure existing handline and continue to suppress any fire near Cody Meadow and Caples Creek utilizing direct line construction tactics and natural barriers. Mop up to the extent necessary and secure heat sources between DP-65 and Scout Peak PURPOSE: Minimize any fire progression and ensure the safety of those working within the division END STATE: Fires edge in the division is controlled and escape is improbable									
7. Special Instructions: Backhaul trash, excess supplies and provide a location for accountable property Identify and coordinate the removal of hazard trees Resources denoted with * is identified as I/A resources within the TFR ***Resources need to report to Heaventy ICP (3860 Saddle Rd., South Lake Tahoe, CA 96150) for briefing and end of shift***									
8. Communications									
Name	Ch	Function	Rx Freq	Rx Tone	Tx Freq	Tx Tone	Notes		
COMMAND SEE ICS 205	1	COMMAND							
NIFC T3	8	TACTICAL	168.6000N		168.6000N				
A/G CMD	14	A/G CMD	167.9500N		167.9500N				
CALCORD	15	COORDINATION	156.0750N	156.7	156.0750N	156.7			
GUARD 16	16	EMERGENCY	168.6250N		168.6250N	110.9			
9. Prepared by: Name:		Mike Yeun, Chris Adams, Derek Acosta(T)			RESL		Signature:		
ICS 204		Date/Time: 9/20/2021		2200		Personnel Count: 250			

ASSIGNMENT LIST (ICS 204 WF)

CONTROLLED UNCLASSIFIED
INFORMATION/BASIC

1. Incident Name: <p style="text-align: center;">CALDOR</p>	2. Operational Period: Date From: 09/21/21 Date To: 09/22/21 Time From: 0700 Time To: 0700	3. Branch Division <p style="text-align: center;">III R</p> <p style="text-align: center;">Page 1 of 2 Romeo</p>
--	---	--

4. Operations Personnel: Operations Section Chief: Jim Snow, Mike Page(T) Branch Director: John Owings Division/Group Supervisor: Aaron Schumacher, Garth Crow	Night Ops: Mike Koontz, Luis Gomez(T) Deputy Ops Al Ward, Chris St Pierre(T) Air Attack: Todd White
---	--

5. Resources Assigned:	** Resources Below in Bold are 12 Hour **							
Resource Identifier	ALS	LWD	Leader	Personnel	Request #	Hours	Reporting Location	
HC2 FIRESTORM		10/2	LOPEZ	20	C-108	0700-1900	HEAVENLY ICP	
ENG3 CCD 3324		10/1	VANDERSLICE	4	E-50195	0700-1900	HEAVENLY ICP	
ENG3 J3 CONTRACTING 2		9/25	MCANDREW	3	E-50294	0700-1900	HEAVENLY ICP	
ENG4 COOPER CONTRACTING		10/1	BURWELL	3	E-50223	0700-1900	HEAVENLY ICP	
ENG 4 BOSKET'S PLUMBING		9/30	BAILEY	3	E-50202	0700-1900	HEAVENLY ICP	
ENG4 PACIFIC OASIS		10/3	WILSON	3	E-50285	0700-1900	HEAVENLY ICP	
ENG6 INDIANOLA		9/29	ALLSOP	3	E-50198	0700-1900	HEAVENLY ICP	
ENG6 N4S		9/29	NAEGELE	2	E-50265	0700-1900	HEAVENLY ICP	
ENG6 BKF 664		9/29	WOLFF	3	E-50201	0700-1900	HEAVENLY ICP	
ENG6 OREGON WOODS INC		10/1	PARKINS	3	E-50210	0700-1900	HEAVENLY ICP	
ENG6 ALLEN FIRE LLC		10/1	ALLEN	3	E-50218	0700-1900	HEAVENLY ICP	
ENG6 TIMBER RIDGE		10/3	TODD	3	E-50284	0700-1900	HEAVENLY ICP	
ENG6 GRIZ ONE		10/3	TABER	3	E-50286	0700-1900	HEAVENLY ICP	
ENG6 FIRST STRIKE		10/3	FOOTE	3	E-50278	0700-1900	HEAVENLY ICP	
WTS2 IDAHO HEAVY EQUIP		9/27	HOLLIDAY	2	E-387	0700-1900	HEAVENLY ICP	
DOZZ BUFFINGTON		10/17	BENSON	2	E-20022	0700-1900	HEAVENLY ICP	

6. Work Assignments:
 TASK: Secure existing line utilizing natural barriers. Mop up to the extent necessary around Kirkwood Lake and secure any heat sources south of Hwy 88
 PURPOSE: Minimize any fire progression and ensure the safety of those working near Hwy 88
 END STATE: Fires edge in the division in controlled and escape is improbable

7. Special Instructions:
 Backhaul trash, excess supplies and provide a location for accountable property
 Identify and coordinate the removal of hazard trees
 Resources denoted with * is identified as I/A resources within the TFR
 Resources need to report to Heavenly ICP (3860 Saddle Rd., South Lake Tahoe, CA 96150) for briefing and end of shift

8. Communications

Name	Ch	Function	Rx Freq	Rx Tone	Tx Freq	Tx Tone	Notes
COMMAND SEE ICS 205	1	COMMAND					
NIFC T7	9	TACTICAL	168.2500N		168.2500N		
A/G CMD	14	A/G CMD	167.9500N		167.9500N		
CALCORD	15	COORDINATION	156.0750N	156.7	156.0750N	156.7	
GUARD 16	16	EMERGENCY	168.6250N		168.6250N	110.9	

9. Prepared by: Name:	Mike Yeun, Chris Adams, Derek Acosta(T)	RESL	Signature:
ICS 204	Date/Time: 9/20/2021 2200	Personnel Count: 63	

ASSIGNMENT LIST (ICS 204 WF)

CONTROLLED UNCLASSIFIED
INFORMATION/BASIC

1. Incident Name: <p style="text-align: center; font-size: 1.2em;">CALDOR</p>		2. Operational Period: Date From: 09/21/21 Date To: 09/22/21 Time From: 0700 Time To: 0700				3. Branch Division <p style="text-align: center; font-size: 1.5em;">III Suppression Repair</p>	
						Page 1 of 2	
4. Operations Personnel:							
Operations Section Chief: Jim Snow, Mike Page(T) Branch Director: John Owings Division/Group Supervisor: Rob Bertolina				Night Ops: Mike Koontz, Luis Gomez(T) Deputy Ops Al Ward, Chris St Pierre(T) Air Attack: Todd White			
5. Resources Assigned:		** Resources Below in Bold are 12 Hour **					
Resource Identifier	ALS	LWD	Leader	Personnel	Request #	Hours	Reporting Location
HC2 R&R CONTRACTING		9/25	IBARRA	20	C-50041	0700-1900	HEAVENLY ICP
HC2 GRIZZLY FIREFIGHTERS		9/25	FONSECA	20	C-50042	0700-1900	HEAVENLY ICP
HC2 MS REGULAR 1		9/27	GLADNEY	22	C-50047	0700-1900	HEAVENLY ICP
HC2 COOPER CONTRACTING		9/26	GRIMALDO	20	C-50048	0700-1900	HEAVENLY ICP
HC2 PACIFIC COAST		10/2	CISNEROS	20	C-50003	0700-1900	HEAVENLY ICP
UTIL CRAIG		9/25	CRAIG	3		0700-1900	HEAVENLY ICP
WTS1 LOVATO		10/3	LOVATO	1	E-50248	0700-1900	HEAVENLY ICP
WTT2 QUALITY CONST		10/1	INDIHOR	1	E-20008	0700-1900	HEAVENLY ICP
WTS2 ABLE SERVICES		10/2	DREW	1	E-50240	0700-1900	HEAVENLY ICP
WTT2 AC WATER		10/19	ROSE	1	E-20017	0700-1900	HEAVENLY ICP
WTS3 KLEINWORTH		10/2	KLEINWORTH	1	E-50247	0700-1900	HEAVENLY ICP
WTS3 US RANCH		10/2	SALAZAR	1	E-50246	0700-1900	HEAVENLY ICP
DOZ2 2C LAND AND TIMBER		9/30	CARRIOOO	2	E-50234	0700-1900	HEAVENLY ICP
DOZ3 DEUCES TRUCKING		9/30	JOHNSON	3	E-50238	0700-1900	HEAVENLY ICP
EXCA JW MORRISON		9/30	DALE	1	E-50229	0700-1900	HEAVENLY ICP
EXCA STOX 72		9/27	LICATA	2	E-686	0700-1900	HEAVENLY ICP
EXCA MC EXCAVATION		10/3	STANHUPE	2	E-235	0700-1900	HEAVENLY ICP
EXCA DAVIS CORP		9/22	PARKER	2	E-688	0700-1900	HEAVENLY ICP
EXCA HACKER MACHINES		10/1	ARCE	2	E-50233	0700-1900	HEAVENLY ICP
6. Work Assignments:							
TASK: Perform priority suppression repair work within Branch 3. Coordinate closely with CALFIRE AEU and USFS REAFs, focusing efforts in Christmas Valley, Angora Meadow, and Freel Peak Road							
PURPOSE: Minimize any near-term environmental resource impacts as a result of fire suppression efforts							
END STATE: Watershed and areas adjacent to values at risk are protected using the approved standard							
7. Special Instructions:							
Backhaul trash, excess supplies and provide a location for accountable property							
Identify and coordinate the removal of hazard trees							
Resources denoted with * is identified as I/A resources within the TFR							
Resources need to report to Heavenly ICP (3860 Saddle Rd., South Lake Tahoe, CA 96150) for briefing and end of shift							
8. Communications							
Name	Ch	Function	Rx Freq	Rx Tone	Tx Freq	Tx Tone	Notes
COMMAND SEE ICS 205	1	COMMAND					
VFIRE 24	10	TACTICAL	154.272N		154.2725N		
A/G CMD	14	A/G CMD	167.9500N		167.9500N		
CALCORD	15	COORDINATION	156.0750N	156.7	156.0750N	156.7	
GUARD 16	16	EMERGENCY	168.6250N		168.6250N	110.9	
9. Prepared by: Name: Mike Yeun, Chris Adams, Derek Acosta(T) RESL							
						Signature:	
ICS 204	Date/Time: 9/20/2021 2200			Personnel Count: 123			

ASSIGNMENT LIST (ICS 204 WF)

CONTROLLED UNCLASSIFIED
INFORMATION/BASIC

1. Incident Name: <p style="text-align: center; font-weight: bold;">CALDOR</p>	2. Operational Period: Date From: 09/21/21 Date To: 09/22/21 Time From: 0700 Time To: 0700	3. Branch Division <p style="text-align: center; font-size: 2em; font-weight: bold;">III Suppression Repair</p>
Page 2 of 2		

4. Operations Personnel: Operations Section Chief: Jim Snow, Mike Page(T) Branch Director: John Owings Division/Group Supervisor: Rob Bertolina	Night Ops: Mike Koontz, Luis Gomez(T) Deputy Ops Al Ward, Chris St Pierre(T) Air Attack: Todd White
--	--

5. Resources Assigned:		** Resources Below In Bold are 12 Hour **					
Resource Identifier	ALS	LWD	Leader	Personnel	Request #	Hours	Reporting Location
EXCA PRO INC		10/2	ROE	2	E-50261	0700-1900	HEAVENLY ICP
EXCA BALDWIN DIESEL		10/2	MILLER	2	E-50232	0700-1900	HEAVENLY ICP
EXCA SERMON		10/2	SERMON	2	E-50260	0700-1900	HEAVENLY ICP
EXCA WESTERN MT EXCAVATION		10/4	BUGLI	2	E-50264	0700-1900	HEAVENLY ICP
GRD JDB3		9/27	WERRY	2	E-50147	0700-1900	HEAVENLY ICP
GRD MILLSAPS		9/24	HANSEN	2	E-50148	0700-1900	HEAVENLY ICP
CHIP MCKELLAR TREE SERV		9/28	AYALA	3	E-50134	0700-1900	HEAVENLY ICP
CHIP SISKIYOU TREES		9/21	LANGE	3	E-50136	0700-1900	HEAVENLY ICP
MAST JANC		10/1	JANC	2	E-50251	0700-1900	HEAVENLY ICP
MAST PERRAULT		10/1	DECUIR	2	E-50250	0700-1900	HEAVENLY ICP
FMOD REDWOOD EMPIRE		10/2	GONZALEZ	2	O-50342	0700-1900	HEAVENLY ICP
TFLD NELSON			NOT CHECKED IN	1	O-50334	0700-1900	HEAVENLY ICP
HEQB SEWELL		9/24	SEWELL	1	O-50178	0700-1900	HEAVENLY ICP
HEQB SHEPHERD		9/24	SHEPHERD	1	O-50012	0700-1900	HEAVENLY ICP
HEQB(T) LOZANO		9/24	LOZANO	1	O-50011	0700-1900	HEAVENLY ICP
HEQB(T) QUINN		10/4	QUINN	1	O-50497	0700-1900	HEAVENLY ICP
READ PATTERSON			PATTERSON	1	O-50136	0700-1900	HEAVENLY ICP
REAF(T) HENDERSON			HENDERSON	1		0700-1900	HEAVENLY ICP
THSP GUSSES			GUSSES	1	O-526	0700-1900	HEAVENLY ICP

6. Work Assignments:
 TASK: Perform priority suppression repair work within Branch 3. Coordinate closely with CALFIRE AEU and USFS REAFs, focusing efforts in Christmas Valley, Angora Meadow, and Freel Peak Road
 PURPOSE: Minimize any near-term environmental resource impacts as a result of fire suppression efforts
 END STATE: Watershed and areas adjacent to values at risk are protected using the approved standard

7. Special Instructions:
 Backhaul trash, excess supplies and provide a location for accountable property
 Identify and coordinate the removal of hazard trees
 Resources denoted with * is identified as I/A resources within the TFR
 Resources need to report to Heavenly ICP (3860 Saddle Rd., South Lake Tahoe, CA 96150) for briefing and end of shift

8. Communications							
Name	Ch	Function	Rx Freq	Rx Tone	Tx Freq	Tx Tone	Notes
COMMAND SEE ICS 205	1	COMMAND					
VFIRE 24	10	TACTICAL	154.272N		154.2725N		
A/G CMD	14	A/G CMD	167.9500N		167.9500N		
CALCORD	15	COORDINATION	156.0750N	156.7	156.0750N	156.7	
GUARD 16	16	EMERGENCY	168.6250N		168.6250N	110.9	

9. Prepared by: Name: Mike Yeun, Chris Adams, Derek Acosta(T)	RESL	Signature:
---	------	------------

ICS 204	Date/Time: 9/20/2021 2200	Personnel Count: 31
----------------	---------------------------	---------------------

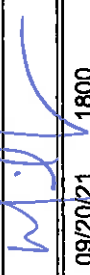
ICS 205 - INCIDENT RADIO COMMUNICATIONS PLAN

CONTROLLED UNCLASSIFIED
INFORMATION//BASIC

1. Incident Name: CALDOR EAST Z3	2. Date/Time Prepared Date: 09/20/2021 Time: 1800	3. Operational Period: Date To: 09/22/21 Time To: 0700
---	--	---

4. Communications									
Ch#	Function	Name	Assigned To	Rx Freq	Rx Tone	Tx Freq	Tx Tone	Notes	
1	COMMAND	CMD 5	EAST BRANCHES	169.7500N	146.2	167.1000N	146.2	MONUMENT PK LINKED W/ C67,C93,C96	
2	COMMAND	CMD 93	EAST BRANCHES	166.6875N	146.2	162.9375N	146.2	SCOUT LINKED W/C5,C67,C96	
3	COMMAND	CMD 67	EAST BRANCHES	172.0750N	146.2	162.2000N	146.2	KIRKWOOD MT,LINKED W/C5,C93,C96	
4	COMMAND	CMD 96	EAST BRANCHES	169.9625N	146.2	165.0500N	146.2	PYRAMID PEAK LINKED W/C5,C93,C67	
5	COMMAND	CMD 56	WEST BRANCHES	172.3500N	114.8	163.0375N	114.8	MONUMENT PK LINK TO WEST	
6	TACTICAL	NIFC T1	DIV I/M	168.0500N		168.0500N			
7	TACTICAL	NIFC T6	DIV O/P	166.7750N		166.7750N			
8	TACTICAL	NIFC T3	DIV Q	168.6000N		168.6000N			
9	TACTICAL	NIFC T7	DIV R	168.2500N		168.2500N			
10	TACTICAL	VFIRE 24	FIRE SUPP/REPAIR	154.2725N	156.7	154.2725N	156.7		
11	TACTICAL	VFIRE 25	NIGHT OPS	154.2875N	156.7	154.2875N	156.7		
12	A/G CMD	A/G CMD	ALL BRANCHES	167.9500N		167.9500N			
13	A/G TAC	A/G TAC	A/G BUCKETS	166.6125N		166.6125N			
14	A/G TAC	A/G TAC2	A/G LOGS	169.2875N		169.2875N			
15	COORDINATION	CALCORD	ALL BRANCHES	156.0750N	156.7	156.0750N	156.7	MEDICAL COORDINATION	
16	EMERGENCY	GUARD 16	ALL BRANCHES	168.6250N		168.6250N	110.9	EMERGENCY USE ONLY	
17									
18									
19									
20	EMERGENCY	GUARD 16	ALL BRANCHES	168.6250N		168.6250N	110.9	EMERGENCY USE ONLY	

EAST COMMUNICATION 208-850-8987

6. Prepared by: Name: MIKE GREENE COML	Signature:  Date/Time: 09/20/21 1800
---	--

NIMS IAP

ICS 205 - INCIDENT RADIO COMMUNICATIONS PLAN

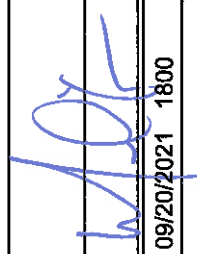
CONTROLLED UNCLASSIFIED
INFORMATION//BASIC

1. Incident Name: CALDOR WEST Z1	2. Date/Time Prepared Date: 09/20/2021 Time: 1800	3. Operational Period: Date To: 09/22/21 Time To: 0700
---	--	---

4. Communications									
Ch#	Function	Name	Assigned To	Rx Freq	Rx Tone	Tx Freq	Tx Tone	Notes	
1	COMMAND	CMD 109	WEST BRANCHES	170.3875N	114.8	162.1750N	114.8	BIG HILL	
2	COMMAND	CMD 104	WEST BRANCHES	170.7625N	114.8	165.6250N	114.8	NORTH OF HWY 50 BETWEEN DP 21 AND DP 24	
3	COMMAND	CMD 1	WEST BRANCHES	170.9750N	114.8	168.7000N	114.8	LEEK SPRINGS	
4	COMMAND	CMD 11	WEST BRANCHES	170.8875N	114.8	166.575N	114.8	GRIZZLY FLATS AREA	
5	COMMAND	CMD 113	WEST BRANCHES	170.3125N	114.8	165.6750N	114.8	KIRKWOOD MOUNTAIN	
6	COMMAND	CMD 116	WEST BRANCHES	171.0375N	114.8	162.5875N	114.8	SIERRA SKI RESORT	
7	TACTICAL	VTAC 13		158.7375N	156.7	158.7375N	156.7		
8	TACTICAL	NIFC T1	DIV G/TW	168.0500N		168.0500N			
9	TACTICAL	NIFC T6	FIRE SUPP.REPAIR	166.7750N		166.7750N			
10	TACTICAL	NIFC T3		168.6000N		168.6000N			
11	TACTICAL	NIFC T7		168.2500N		168.2500N			
12	A/G CMD	A/G CMD	ALL BRANCHES	167.9500N		167.9500N		AIR TO GROUND	
13	A/G TAC	A/G TAC	A/G BUCKETS	166.6125N		166.6125N			
14	A/G TAC	A/G TAC2	A/G LOGS	169.2875N		169.2875N			
15	MEDICAL	CALCORD	ALL BRANCHES	156.0750N	156.7	156.0750N	156.7	EMS COORDINATION ONLY	
16	EMERGENCY	GUARD 16	ALL BRANCHES	168.6250N		168.6250N	110.9	EMERGENCY USE ONLY	
17									
18									
19									
20	EMERGENCY	GUARD 16	ALL BRANCHES	168.6250N		168.6250N	110.9	EMERGENCY USE ONLY	

5. Special Instructions

CALDOR COMMUNICATION ICP HEAVENLY 208-850-8987

6. Prepared by (Communications Unit Leader): Name: MIKE GREENE COML	Signature: 
ICS 205 - CONTROLLED UNCLASSIFIED INFORMATION//BASIC	NIMS IAP Date/Time: 09/20/2021 1800

ICS 205 - INCIDENT RADIO COMMUNICATIONS PLAN

1. Incident Name: ENF/AEU INITIAL ATTACK ONLY

2. Date/Time Prepared Date: 09/20/2021 Time: 1800

3. Operational Period: Date From: 09/21/21 Date To: 09/22/21 Time From: 0700 Time To: 0700

4. Communications		Name	Assigned To	Rx Freq	Rx Tone	Tx Freq	Tx Tone	Notes
Ch#	Function							
1	COMMAND	ENFADM 1		172.3250N	156.7	165.2250N	110.9	FOREST ADMIN Tone 1-Alder
2	COMMAND	ENFADM 2		172.3250N	156.7	165.2250N	123.0	FOREST ADMIN Tone 2-Leek Springs
3	COMMAND	ENFADM 4		172.3250N	156.7	165.2250N	136.5	FOREST ADMIN Tone 4-Big Hill
4	COMMAND	ENFADM 6		172.3250N	156.7	165.2250N	156.7	FOREST ADMIN Tone 6-Echo Summit
5	COMMAND	XAM CT10		154.7625N	123.0	159.1800N	107.2	AMADOR CMD Tone 10-Leek Springs
6	COMMAND	XAM CT11		154.7625N	123.0	159.1800N	114.8	AMADOR CMD Tone 11-Zion Mountain
7	COMMAND	XED CT11		155.9025N	186.2	159.2775N	114.8	EL DORADO CMD Tone 11-Union
8	COMMAND	XED CT1		155.9025N	186.2	159.2775N	110.9	EL DORADO CMD Tone 1-Alder
9	COMMAND	XED CT4		155.9025N	186.2	159.2775N	136.5	EL DORADO CMD Tone 4-Big Hill
10	TACTICAL	R5 T4		166.5500N		166.5500N		REGION 5 TAC 4
11	TACTICAL	R5 T5		167.1125N		167.1125N		REGION 5 TAC 5
12	TACTICAL	R5 T6		168.2375N		168.2375N		REGION 5 TAC 6
13	TACTICAL	CDF T2		151.1600N	192.8	151.1600N	192.8	
14	TACTICAL	CDF T8		151.3700N	192.8	151.3700N	192.8	
15	AIR TO GROUND	A/G TAC	AIR TO GROUND	164.1375N		164.1375N		
16	EMERGENCY	GUARD 8	EMERGENCY	168.6250N		168.6250N	110.9	
17								
18								
19								
20	EMERGENCY	GUARD 8	EMERGENCY	168.6250N		168.6250N	110.9	

5. Special Instructions

6. Prepared by (Communications Unit Leader): Name: MIKE GREENE

Signature: 

Date/Time: 09/20/2021 1800

ICS 205 - INCIDENT RADIO COMMUNICATIONS PLAN

CONTROLLED UNCLASSIFIED
INFORMATION//BASIC

1. Incident Name: TAHOE BASIN I/A		2. Date/Time Prepared Date: 09/20/21 Time: 1800		3. Operational Period: Date From: 09/21/21 Time From: 0700 Date To: 09/22/21 Time To: 0700				
4. Communications								
Ch#	Function	Name	Assigned To	Rx Freq	Rx Tone	Tx Freq	Tx Tone	Notes
1	FOREST NET	ENF T9	ALL DIVS	171.5250N	156.7	162.7500N	T9-100.0	HAWKINS PK
2	FOREST NET	TMU T2	ALL DIVS	172.3750N	156.7	164.9625N	T2-123.0	EAST PK
3	FOREST NET	HTF T3	ALL DIVS	173.7750		165.7500N	T3-131.8	HAWKINS PK
4	TACTICAL	NIFC T1	ALL DIVS	168.0500N		168.0500N		
5	TACTICAL	NIFC T2	ALL DIVS	168.200N		168.200N		
6	TACTICAL	R5T4	ALL DIVS	166.5500N		166.5500N		
7	TACTICAL	R5T5	ALL DIVS	167.1125N		167.1125N		
8	TACTICAL	VFIRE22	ALL DIVS	154.2650N	156.7	154.2650N	156.7	
9	TACTICAL	VFIRE23	ALL DIVS	154.2950N	156.7	154.2950N	156.7	
10	TACTICAL	VFIRE 26	ALL DIVS	154.3025N	156.7	154.3025N	156.7	
11	TACTICAL	CCD SOA	ALL DIVS	171.6750N		171.6750N		AKA" BLM SOA"
12	TACTICAL	NDF RED 1	ALL DIVS	159.3450N		159.3450N		
13	AIR TO GROUND	A/G 14	ALL DIVS	167.5000N		167.5000N		I/A A/G-ENF/TMU
14	AIR TO GROUND	A/G 51	ALL DIVS	168.3125N		168.3125N		I/A A/G-SIERRA FRONT
15	MEDICAL	CALCORD	ALL DIVS	156.0750N	156.7	156.0750N	156.7	MEDICAL COORDINATION
16	EMERGENCY	GUARD	EMERGENCY	168.6250N		168.6250N	110.9	EMERGENCY CONTACT
17								
18								
19								
20	EMERGENCY	GUARD	EMERGENCY	168.6250N		168.6250N	110.9	EMERGENCY CONTACT
5. Special Instructions								

6. Prepared by (Communications Unit Leader): Name: MIKE GREENE	Signature: 
ICS 205 - CONTROLLED UNCLASSIFIED INFORMATION//BASIC	Date/Time: 09/20/21 1800

AIR OPERATIONS SUMMARY

PREPARED BY: JoAnn Overacker (AOBD)

PREPARED DATE - TIME: 09/20/21 - 1800

1. INCIDENT NAME: Caldor	2. OPERATIONAL PERIOD DATE: 9/21/21	START: 0700	END: 2000	SUNRISE: 0647	SUNSET: 1857
3. REMARKS (Safety Notes, Hazards, Air Operations Special Equipment, etc.) Lake Tahoe Airport is open to GA, coordinate traffic with Tower. Track total gallons pulled per Dip Site and note on Helicopter Cost Summary. Ensure Covid precautions are exercised at Helibase					
4. MEDEVAC A/C: H-5PT for Type II H-873 Holst NVG See Medical Plan			5. TFR: Radius: Altitude: Center: Frequency: 118.6250		

6. PERSONNEL		7. FREQUENCIES		8. FIXED-WING # Avail/Type/Make-Model / FAA NR / Base(s)	
Phone		AM	FM	Airtankers	As Ordered: AA
AOBD: JoAnn Overacker	209-559-1617	AIR/AIR FW: 118.6250			
ASGS(t): Rex Sundstrom	530-575-0368	AIR/AIR RW: 133.0250			
HEBM: Cammie Roy	907-750-6620	AIR TACTICS: 163.3375	167.9500	Lead Planes	As Ordered
HEBM(t): Scott Magargse	205-335-4932	A/G CMD:	166.6125		
		A/G Buckets:	169.2875	ATGS Aircraft	As Ordered
ATGS: Todd White	530-263-5621	A/G Cargo/Recon:	163.1000		
		DECK:			
HILCO: Jed Smith	530-307-9171	TVL TEMP Tower:	127.1250	ATGS (Night)	As Ordered
		CALCORD:	156.0750		
		GUARD 16:	168.6250		

9. HELICOPTERS (Use Additional Sheets As Necessary)													
FAA #	Type	MAKE/MODEL	BASE	AVAIL	START	REMARKS	FAA #	Type	MAKE/MODEL	BASE	AVAIL	START	REMARKS
3TH	I	UH-60	Tahoe	0800	0700	Bucket - EU	H-516	II	Bell 212	Pacific	0800	0700	Bucket - EU
8CH	I	CH-47	Tahoe	"	"	Bucket - EU							
5HT	I	CH-54	Tahoe	"	"	Tank - EU							
1BH	I	UH-60	Tahoe	"	"	Bucket - CWN							
5PT	II	Bell 205++	Tahoe	"	"	Bucket - EU							
69H	II	Bell 205++	Tahoe	"	"	Rappel - EU							
4HX	III	Bell 407	Tahoe	"	"	EU							
5AE	III	A-Star 350	Tahoe	"	"	EU							
509	III	Cobra	Tahoe	"	"	HICO							

MEDICAL PLAN (ICS 206 WF) CIIMT 12

1. Incident Name		2. Operational Period						
CALDOR INCIDENT		Date/Time: 09/21/2021 – 09/22/2021 (24 hours)						
3. EMS / Ambulance Services/Aid Stations								
Name	Location	Frequency/Phone		Advanced Life Support (ALS) Yes No				
MEDICAL UNIT	ICP	805-813-3858 909-908-4778		X				
EL DORADO	CAMINO ECC SLT DISPATCH	530-647-5220 530-542-6148		X				
AMERICAN LEGION	CAMINO ECC SLT DISPATCH	530-647-5220 530-542-6148		X				
4. Air Rescue / Air Ambulance Services								
Name	Phone	Type of Aircraft & Capability						
GUARD 873	CAMINO ECC 530-647-5220	HELICOPTER, ALS, 24/7 - HOIST						
CAREFLIGHT	CAMINO ECC 530-647-5220	AIR AMBULANCE ALS – NO HOIST						
CALSTAR 6	CAMINO ECC 530-647-5220	AIR AMBULANCE ALS – NO HOIST						
5. Hospitals (all times estimated from incident location)								
Name & Level	GPS Datum – WGS 84 Degrees Decimal Minutes		Travel Time Air Gnd		Phone	Helipad Yes No	Address	
BARTON MEMORIAL HOSPITAL (LEVEL 3)	Lat:	N 38° 54.72'		2 MIN	5 MIN	530-541-3420	X	2170 South Ave. South Lake Tahoe, CA 96150
	Long:	W 119° 59.72'						
REOWN REGIONAL MEDICAL CENTER (LEVEL 2)	Lat:	N 39° 31.51'		20 MIN	1.5 HRS	775-982-2005	X	1156 Mill St Reno, NV 89502
	Long:	W 119° 47.75'						
SUTTER ROSEVILLE MEDICAL CENTER (LEVEL 2)	Lat:	N 38° 45.97'		45 MIN	3 HRS	916-781-1200	X	1 Medical Plaza Dr. Roseville, CA 95661
	Lat:	W 121° 14.87'						
UC DAVIS MEDICAL CENTER (LEVEL 1 TRAUMA/BURN)	Lat:	N 38° 33.32'		45 MIN	3 HRS	916-703-6576	X	2315 Stockton Blvd. Sacramento, CA 95817
	Long:	W 121° 27.35'						
6. Division / Crew Emergency Pre-Plan						<i>Update and discuss with assigned resources daily.</i>		
Fireline EMT / Medic's Division / Branch Location								
Air Hoist site location site: Lat: / Long: / Elevation:								
Helispot: Lat: / Long: / Elevation:								
7. Prepared By (Medical Unit Leader)		8. Date/Time		9. Reviewed By (Safety Officer)		10. Date/Time		
MEDL NICK STEPANIAN 909-908-4778 MEDL BRANDON BENNEWATE 805-813-3858 <i>Brandon Bennestate</i>		09/20/2021 1600		SOF2 PAUL TOMPKINS 619-889-7533 <i>Paul Tompkins</i>		09/20/2021 1600		

MEDICAL PLAN (ICS 206 WF) CIIMT 12

Medical Incident Report

FOR A NON-EMERGENCY INCIDENT, WORK THROUGH CHAIN OF COMMAND TO REPORT AND TRANSPORT INJURED PERSONNEL AS NECESSARY.

FOR A MEDICAL EMERGENCY: IDENTIFY ON SCENE INCIDENT COMMANDER BY NAME AND POSITION AND ANNOUNCE "MEDICAL EMERGENCY" TO INITIATE RESPONSE FROM IMT COMMUNICATIONS/DISPATCH.

Use the following items to communicate situation to communications/dispatch.

1. CONTACT COMMUNICATIONS / DISPATCH (Verify correct frequency prior to starting report)

Ex: "Communications, Div. Alpha. Stand-by for Emergency Traffic."

2. INCIDENT STATUS: Provide incident summary (including number of patients) and command structure.

Ex: "Communications, I have a Red priority patient, unconscious, struck by a falling tree. Requesting air ambulance to Forest Road 1 at (Lat./Long.) This will be the Trout Meadow Medical, IC is TFLD Jones. EMT Smith is providing medical care."

Severity of Emergency / Transport Priority

- RED / PRIORITY 1** Life or limb threatening injury or illness. Evacuation need is **IMMEDIATE**
Ex: Unconscious, difficulty breathing, bleeding severely, 2° - 3° burns more than 4 palm sizes, heat stroke, disoriented.
- YELLOW / PRIORITY 2** Serious Injury or illness. Evacuation may be **DELAYED** if necessary.
Ex: Significant trauma, unable to walk, 2° - 3° burns not more than 1-3 palm sizes.
- GREEN / PRIORITY 3** Minor Injury or illness. **Non-Emergency transport**
Ex: Sprains, strains, minor heat-related illness.

Nature of Injury or Illness & Mechanism of Injury

Brief Summary of Injury or Illness
(Ex: Unconscious, Struck by Falling Tree)

Transport Request

*Air Ambulance / Short Haul/Hoist
Ground Ambulance / Other*

Patient Location

*Descriptive Location & Lat. / Long.
(WGS84)*

Incident Name

*Geographic Name + "Medical"
(Ex: Trout Meadow Medical)*

On-Scene Incident Commander

Name of on-scene IC of Incident within an Incident (Ex: TFLD Jones)

Patient Care

*Name of Care Provider
(Ex: EMT Smith)*

3. INITIAL PATIENT ASSESSMENT: Complete this section for each patient as applicable (start with the most severe patient)
Patient Assessment: See IRPG PAGE 106

Treatment:

4. TRANSPORT PLAN:

Evacuation Location (if different): (Descriptive Location (drop point, intersection, etc.) or Lat. / Long.) Patient's ETA to Evacuation Location:

Helispot / Extraction Site Size and Hazards:

5. ADDITIONAL RESOURCES / EQUIPMENT NEEDS:

Example: Paramedic/EMT, Crews, Immobilization Devices, AED, Oxygen, Trauma Bag, IV/Fluid(s), Splints, Rope rescue, Wheeled litter, HAZMAT, Extrication :

6. COMMUNICATIONS: Identify State Air/Ground EMS Frequencies and Hospital Contacts as applicable

Function	Channel Name/Number	Receive (RX)	Tone/NAC *	Transmit (TX)	Tone/NAC *
COMMAND					
AIR-TO-GRND					
TACTICAL					

7. CONTINGENCY: Considerations: If primary options fail, what actions can be implemented in conjunction with primary evacuation method? Be thinking ahead. .

8. ADDITIONAL INFORMATION: Updates/Changes, etc. .

REMEMBER: Confirm ETA's of resources ordered. Act according to your level of training. Be Alert. Keep Calm. Think Clearly. Act Decisively. .

Fire and COVID-19 Briefing Checklist

Self-Awareness / Screening

- **Notify** supervisor if you or others experience:
 - Cough, more than expected
 - Difficulty breathing
 - Loss of taste or smell
 - Fever
 - Chills
 - Sore throat
 - Muscle pain
- **Immediately separate** yourself from others.
- Follow crew and division plans to isolate, triage, and transport symptomatic personnel.

Hygiene on the Fireline

- Properly wash or sanitize your hands often
- Avoid handshakes and communal use items
- Inform supervisor of needed resupply.
- Disinfect high touch surfaces often

Social distancing and protective equipment

- Practice social distancing
- Conduct briefings in conversations outdoors and at least **SIX** feet apart
- Utilize face coverings
- Clean or replace dirty face coverings, equipment, and PPE

Communications

- Ensure effective sender/receiver messaging.
- Protect yourself, your crew, and your camp!

Any questions contact:

BARTON HEALTH COVID HOTLINE: 530-600-1999

MEDL Brandon Bennewate @ (805) 813-3858

MEDL Nick Stepanian @ (909) 908-4778

COVID-19 testing is available in camp!



ICP, Main testing site - COVID Clinic East (M-F 0630-1230)

**Alternate Testing Sites – Heavenly Health Clinic or Mobile Medical Support Trailer
(M-F 1230-0630, Sat/Sun as needed)**

Heavenly Fire Camp

3680 Saddle Rd

South Lake Tahoe, CA 96150

Spike Camp (West side)

COVID Clinic West (M-F 0630-1230)

Placerville Ranger District

4260 Eight Mile Road

Camino, CA 95709

COVID testing provides peace of mind that you are not carrying the virus and spreading it to your crew or other people in camp.

Get tested even if you think your symptoms are just allergies or not that serious.



FINANCE MESSAGE

Fire Name: Caldor Fire
Fire Number: CA-ENF-024030
Accounting Code: P5N8GM21
Email: 2021.caldor.finance@firenet.gov
Hotline: 530-330-5450

If you were originally ordered on a CALFIRE contract and have not submitted a VIPR contract and RO or received an EERA (Fed contract) – CONTACT FINANCE TODAY you might not get paid.

Finance Documents Needed upon “Check In” (If Not Already Submitted):

Please email these documents or scan the QR Code below, attach & submit.			
Agency Equipment/ Crews: <ul style="list-style-type: none"> Manifest - showing employment type (GS or WG) or AD rates if applicable 	Overhead: <ul style="list-style-type: none"> AD/Casual Hire Form If regular Agency please ensure “GS” or “WG” is written on your first CTR 	Contract Equipment/ Contract Crews: <ul style="list-style-type: none"> Agreement Manifest Resource Order Inspections 	Cooperator: <ul style="list-style-type: none"> Cooperative Agreement Resource Order

Please submit your CTR/Shift Tickets using the QR code or email address below:

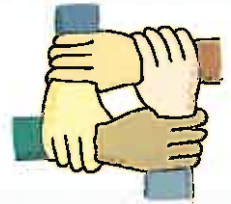
Don’t Forget to put your RO # on your CTR/Shift Ticket – final travel CTR’s must be signed by supervisor on incident - Thank You

Please Include the Word “Equipment” for Federal Equipment or “Time” for Federal Overhead & Crews in the Subject Line of the Email





Human Resource Message



New Human Resource Specialist has arrived on the incident!!!

First, let me say thank you for all your hard work on this incident. I know this community, as I am a resident of South Lake Tahoe, really appreciates the work, effort and sacrifice you all have done and continue to do. Thank You!



Come by and say hello at the end of Trailer Row.

Have a great shift!

Adrian Escobedo, HRSP 530-523-3804

Caldor Fire

September 21st 2021

To receive training credit for the *Caldor Fire*

- ◆ Email me your Completed 225 Eval's
- ◆ Fill out the online exit interview
(QR code attached)
- ◆ Trainee's home unit
mailing address
- ◆ Evaluator's home unit
job title and name
- ◆ Position Task Book
Tasks sign-off

One day prior to demob, please start the close out procedures with us. We are working remotely and will do our best to answer any questions you may have. Please call or email me with your questions.

Thanks for your cooperation.

Morgan Madruga
TRAINING SPECIALIST TRAINEE
Merced Fire Department
99 E 16th St Merced, Ca 95340
209-386-2731
MorganMadruga@yahoo.com



VIRTUAL DEMOBILIZATION

Please follow the steps below in order:

1. Scan the QR code and select the “REMOTE DEMOB” item. PLEASE DO NOT complete this step more than 12 hours prior to your demobilization
2. Complete the questionnaire
3. Go to Weed Wash if your vehicle has been on the fireline
4. Go to Ground Support for your post-inspection
5. Return items checked out from Supply
6. Return any items checked out in Comms
7. Go to Finance at the scheduled time to close out your CTR/Shift Tickets
8. Call Demob at 435-840-5432 to finalize your travel times.

PLEASE NOTE:

If you have any problems, contact Jan either by phone
435-840-5432 or at DMOB



TENTATIVE DEMOBS FOR TUESDAY, SEPTEMBER 21, 2021

EQUIPMENT

TIME	RO #	RESOURCE NAME	ITEM CODE
0630	E-20153	KRITZ	WTRK
0645	E-21263	PLATT COUNTY E-33	ENG
0700	E-561	TNF 1218	ENG3
0715	E-21098	EIC 612	ENG6
0730	E-50236	HUCKABY CONST.	DOZ2
0815	E-50259	40 TRAFFIC	DOZ3
0830	E-21280	CIF 671	ENG6
0900	E-20480	SKY LAKE	FALM
0915	E-291	HART 291	ENG3
0930	E-21263	CO-PIAX 33	ENG3
0945	E-20611	CTS VENTURES	CHIP

OVERHEAD

TIME	RO #	RESOURCE NAME	ITEM CODE
0630	O-20794	KEVIN KAMNIKAR	SOFR
0645	O-50161	RYAN TOBY	SITL
0715	O-50084	WILLIAM PENNINGTON	EQPM
0730	O-343.29	RICKY TOOTLE	RCDM
0745	O-20796	JEFFREY BARNHART	SOFR
0800	O-329	KRISTEN HIGGINS	MEDL(T)
0815	O-529	RYAN WAGGONER	DIVS

Acquiring lodging at the Harvey's hotel

Harvey's hotel is associated with Harrah's. They are across the street from each other and are joined by a tunnel under Hwy 50 on the Nevada side, just at the state line. They have opened the Harvey's hotel specifically for firefighters battling the Caldor fire. No public is staying at that property. **Hotel support and check in for Harvey's Hotel, including front desk services is located at the Harrah's property.** This includes check-in and any maintenance service. Large vehicle parking is at the large parking lot at Harrah's accessible off Lake Parkway. Small vehicles can access the parking structure at Harvey's. At both locations, collect the parking stub to go through the gate. There is no charge for parking. Exit gates will open from 0500 to 0700. You may still use your hotel card or ring for attendant to open the exit gate if needed.

[To reserve a room, scan this code \(or click here\) to make your reservation.](#) Be sure to have your purchase card and crew manifest ready to enter the names of the personnel for each room configuration purchased with that card:



After reserving, go to the Harrah's front desk and complete registration.

They are very understaffed, so please make every attempt to use the web link above to reserve, though you may also call the hotel desk at 775-691-0416 to reserve your room under "Caldor Fire".

Once you check in to the hotel on the Harrah's side, you will then proceed to Harvey's either through the underground tunnel or drive to the Harvey's parking structure. Note: the elevator bank closest to the (currently closed) Harvey's front desk is not in service. You will need to use the Mountain Tower elevator bank by the arcade.

The hotel asks that if you would like trash pickup, please place your trash bags in the hallway and call the front desk to let them know where it is. They don't have enough staff to patrol the halls. They are also available to clean rooms and deliver towels and other items, but you will need to call the front desk for that as well.

Hotel Acquisition Process

The Caldor incident has authorized the individual procurement of hotel accommodations. This is for lodging only. The process below discusses financial procedure and documentation:

If you are a **local agency dispatched through CFAA**, you will need to acquire an S# prior to demob. This number will also be entered on your F42 form.

Federal resources with a travel card will be processed through your agency's travel reimbursement process. Finance will provide a 213 with approval statement upon demob, if required by your agency.

All other non-federal resources, or federal resources that do not have purchasing capability, complete the following:

AD's who are able to pay and get reimbursed for travel will need to pay lodging and get reimbursed through your normal reimbursement process. You will be given a 213 with authorization statement from the finance section during demob.

For AD's and Seasonal Federal Employees who are unable to pay for lodging, the buying team may be able to assist with purchasing your accommodations. Inquire with the incident Finance Section. Federal resources who have the crew boss card option should use this as a first option.

In accordance with each individual contract, **contractors** shall pay for lodging and submit receipts for additions to your invoice (OF-286). Itemized receipts ARE required by the finance section during demob. Also, please note that double occupancy may be required on many contracts.

The finance section will provide S#'s during your demob or sooner.

If you're not in one of these categories or uncertain, finance can help you check. Please use the hotline number: 530-330-5450 or email 2021.Caldor.finance@firenet.gov. If emailing include your resource number, type of resource and contact phone number.

ICP LOGISTICS NOTES

Supply: 0600-2100

Ordering: 0600-2100

Communications: 24/7 Techs: 0600-2100

Food: Breakfast: 0600-0930

Dinner: 1800-2130

Refer Trailer: 0600-2100

Showers: 0500-1300 & 1500-2200

Laundry service: 0500-2200

Ground Support: 0600-2200

Mechanic: 0600-2200

Weed Wash: 0600-1200 1300-2200

Fuel: 0600-1100 and 1400-2200

Medical: 24/7

-Barton Clinic: 0630-0930

-COVID testing: M-F 0600-1200

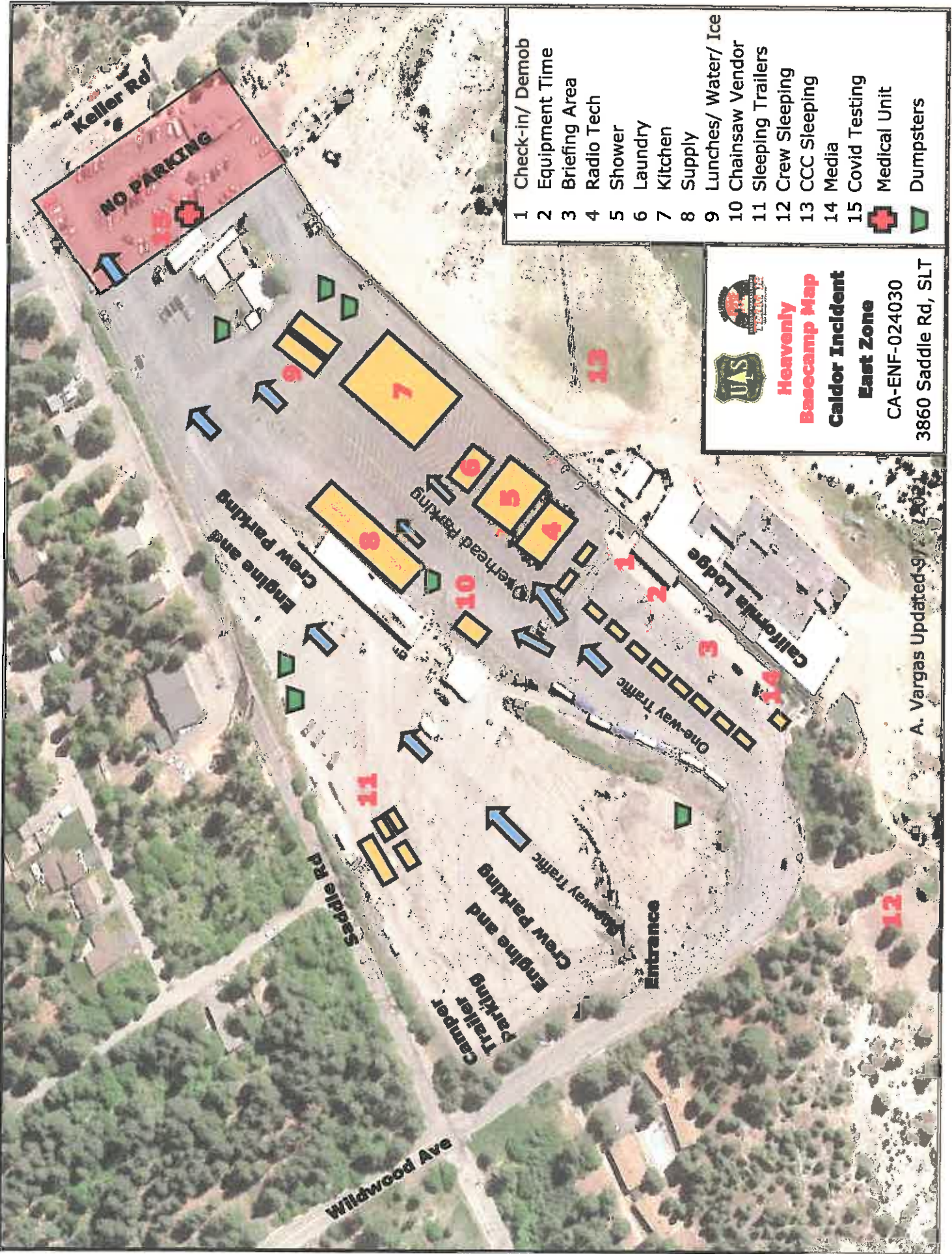
-Mobile Medical Supply Trailer: M-Su 0600-2200



PLEASE DO:

- Only drive ONE WAY in camp.
- Put trash in the dumpster and close the lid...we have Bears!
- Treat other people the way you want to be treated.

PLEASE DO NOT:

- Walk on the roads that vehicles drive on.
- Sleep in vehicle parking areas.



- 1 Check-in/ Demob
 - 2 Equipment Time
 - 3 Briefing Area
 - 4 Radio Tech
 - 5 Shower
 - 6 Laundry
 - 7 Kitchen
 - 8 Supply
 - 9 Lunches/ Water/ Ice
 - 10 Chainsaw Vendor
 - 11 Sleeping Trailers
 - 12 Crew Sleeping
 - 13 CCC Sleeping
 - 14 Media
 - 15 Covid Testing
-  Medical Unit
 Dumpsters




Heavenly Basecamp Map
Caldor Incident
East Zone
 CA-ENF-024030
 3860 Saddle Rd, SLT

A. Vargas Updated 9/1/2021




**GROUND SUPPORT
MAP**

Calder Incident

East Zone

CA-ENF-024030

- 1 Inspection/Mechanic
- 2 Driver's Tent
-  Dumpsters

Lake Tahoe Airport
1901 Airport Rd / Lisa Maloff Way



Ground Support
Contact Information

Transportation: Richard Monk 913-987-9072

Mechanics: Syler 951-312-0455

Entrance

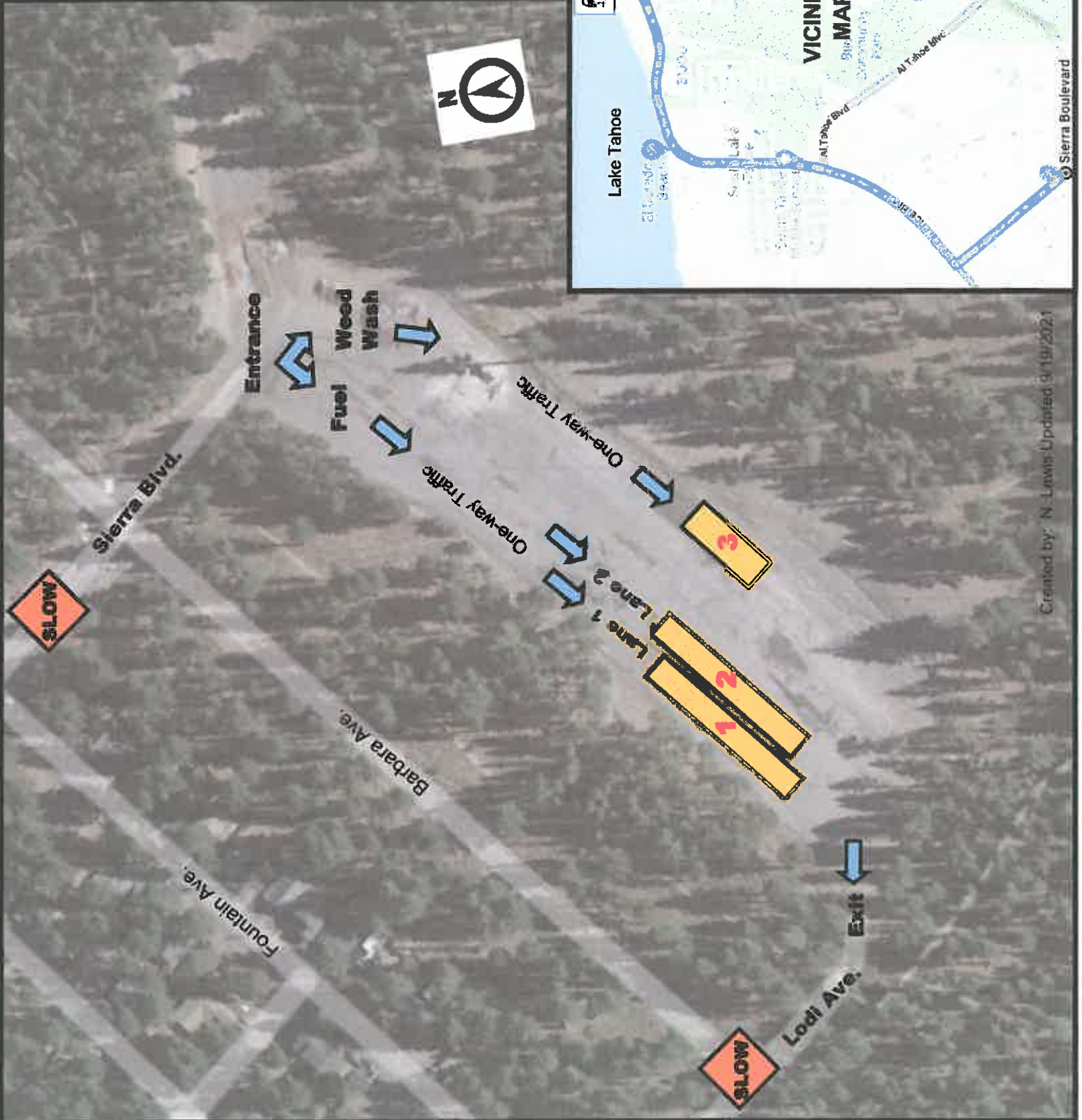


WEED WASH AND REFUEL MAP

Caldor Incident East Zone

CA-ENF-024030

- 1 Fuel Tender Lane 1
- 2 Fuel Tender Lane 2
- 3 Weed Wash



**STATE DPA
CAL FIRE
RESOURCES**

ASSIGNMENT LIST (ICS 204 WF)

CONTROLLED UNCLASSIFIED
INFORMATION//BASIC

1. Incident Name: AEU Caldor Support	2. Operational Period: Date From: 09/21/21 Date To: 09/22/21 Time From: 0700 Time To: 0700	3. Branch Division FSR EAST EAST
4. Operations Personnel: Operations Section Chief: J. Vickers Branch Director: M. Scheeline (12hr) Division/Group Supervisor: N. Ozard (12hr)		Page 1 of 2

Night Ops:
Branch Safety:
Air Attack:

5. Resources Assigned:		** Resources Below in Bold are 12 Hour **					Hours	Reporting Location
Resource Identifier	ALS	LWD	Leader	Personnel	Request #			
CRW NEU 2349			J. Wilburn	6	C-4	0700-1900	HWY 50 x Jewell Rd	
DOZ PVT E-73 NORTH WESTERN			M. Salters	1	E-75	0700-1900	HWY 50 x Jewell Rd	
DOZ PVT E-75 NORTH WESTERN			B Waddell	1	E-77	0700-1900	HWY 50 x Jewell Rd	
DOZ PVT E-77 STAR			A. Bennett	1	E-51	0700-1900	HWY 50 x Jewell Rd	
W/T PVT E-51 FIRELINE			R. Hurl	1	E-52	0700-1900	HWY 50 x Jewell Rd	
MAST PVT E-91 KRISMAN			T. Krisman	1	E-91	0700-1900	HWY 50 x Jewell Rd	
MAST PVT E-92 HEAVY HAUL			A. Harris	1	E-92	0700-1900	HWY 50 x Jewell Rd	
MAST PVT E-93 COLLINS			M. Collins	1	E-93	0700-1900	HWY 50 x Jewell Rd	
MAST PVT E-94 COLMAN			P. Leuzinger	1	E-94	0700-1900	HWY 50 x Jewell Rd	
MAST PVT E-95 BLACK BEAR			M. Bwling	1	E-95	0700-1900	HWY 50 x Jewell Rd	
MAST PVT E-96 STEVEN HILL			S. Hill	1	E-96	0700-1900	HWY 50 x Jewell Rd	
MAST PVT E-97 GOLTERMAN			C. Golterman	1	E-97	0700-1900	HWY 50 x Jewell Rd	
MAST PVT E-104 SMITH			D. Huskey	1	E-104	0700-1900	HWY 50 x Jewell Rd	
MAST PVT E-109 SLOWMOW			M. North	1	E-109	0700-1900	HWY 50 x Jewell Rd	
EXC PVT E-47 KDK			K. Drew	1	E-47	0700-1900	HWY 50 x Jewell Rd	
EXC PVT E-53 FOOTHILL			K. Kent	1	E-53	0700-1900	HWY 50 x Jewell Rd	
EXC PVT E-61 HARDSCAPE			C. Pincher	1	E-61	0700-1900	HWY 50 x Jewell Rd	
EXC PVT E-65 LESLIE			J. Kroller	1	E-65	0700-1900	HWY 50 x Jewell Rd	

6. Work Assignments:
Implement Fire Suppression repair plan.
Identify and document fire suppression repair needs.

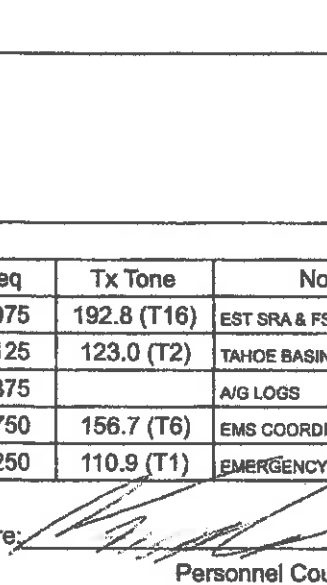
7. Special Instructions:

8. Communications							
Name	Ch	Function	Rx Freq	Rx Tone	Tx Freq	Tx Tone	Notes
CDF T27	7	TACTICAL	159.3075	192.8 (T16)	159.3075	192.8 (T16)	EST SRA & FSR EAST
TMU AD 2	3	COMMAND	171.5750	156.7 (T6)	165.4125	123.0 (T2)	TAHOE BASIN AEU SUPPORT
A/G TAC 2	14	AIR TO GROUND	169.2875		169.2875		A/G LOGS
CALCORD	15	MEDICAL	156.0750	156.7 (T6)	156.0750	156.7 (T6)	EMS COORDINATION ONLY
GUARD 16	16	EMERGENCY	168.6250		168.6250	110.9 (T1)	EMERGENCY USE ONLY

9. Prepared by: Name: N. Pimlott	RESL	Signature:	
ICS 204	Date/Time: 9/20/2021 2200	Personnel Count: 23	

ASSIGNMENT LIST (ICS 204 WF)

CONTROLLED UNCLASSIFIED
INFORMATION/BASIC

1. Incident Name: AEU Caldor Support		2. Operational Period: Date From: 09/21/21 Date To: 09/22/21 Time From: 0700 Time To: 0700				3. Branch Division FSR EAST EAST	
4. Operations Personnel: Operations Section Chief: J. Vickers Branch Director: M. Scheeline (12hr) Division/Group Supervisor: N. Ozard (12hr)		Night Ops: Branch Safety: Air Attack:				Page 2 of 2	
5. Resources Assigned:		** Resources Below in Bold are 12 Hour **					
Resource Identifier	ALS	LWD	Leader	Personnel	Request #	Hours	Reporting Location
SKD PVT E-9 NORCAL			K. Umidon	1	E-9	0700-1900	HWY 50 x Jewell Rd
SKD PVT E-10 KLEE			J. Klee	1	E10	0700-1900	HWY 50 x Jewell Rd
SKD PVT E-136 HERTZIG			D. Briski	1	E-136	0700-1900	HWY 50 x Jewell Rd
CHIP PVT E-3 TIMBERSMITH			C. Moultrie	1	E-3	0700-1900	HWY 50 x Jewell Rd
CHIP PVT E-59 LESLIE			F. Stone	1	E-59	0700-1900	HWY 50 x Jewell Rd
HEQB(T) BARDWELL			J. Bardwell	1	O-36	0700-1900	HWY 50 x Jewell Rd
FSRS COLLAMER			S. Collamer	1	O-30	0700-1900	HWY 50 x Jewell Rd
FSRS SHORT			L. Short	1	O-34	0700-1900	HWY 50 x Jewell Rd
FSRS WHITSON			G. Whitson	1	O-35	0700-1900	HWY 50 x Jewell Rd
FSRS STONE			A. Stone	1	O-37	0700-1900	HWY 50 x Jewell Rd
FSRS(T) ALEGRIA			N. Alegria	1	O-31	0700-1900	HWY 50 x Jewell Rd
FSRS (T) HARCOURT			W. Harcourt	1	O-107	0700-1900	HWY 50 x Jewell Rd
FSRS HARVEY			J. Harvey	1	O-109	0700-1900	HWY 50 x Jewell Rd
6. Work Assignments: Implement Fire Suppression repair plan. Identify and document fire suppression repair needs.							
7. Special Instructions:							
8. Communications							
Name	Ch	Function	Rx Freq	Rx Tone	Tx Freq	Tx Tone	Notes
CDF T27	7	TACTICAL	159.3075	192.8 (T16)	159.3075	192.8 (T16)	EST SRA & FSR EAST
TMU AD 2	3	COMMAND	171.5750	156.7 (T6)	165.4125	123.0 (T2)	TAHOE BASIN AEU SUPPOR
A/G TAC 2	14	AIR TO GROUND	169.2875		169.2875		A/G LOGS
CALCORD	15	MEDICAL	156.0750	156.7 (T6)	156.0750	156.7 (T6)	EMS COORDINATION ONLY
GUARD 16	16	EMERGENCY	168.6250		168.6250	110.9 (T1)	EMERGENCY USE ONLY
9. Prepared by: Name: N. Pimlott		RESL		Signature: 		Personnel Count: 13	
ICS 204		Date/Time: 9/20/2021 2200					

