

Wednesday

# INCIDENT ACTION PLAN

## CALDOR INCIDENT

CA-ENF-024030

P5N8GM21



Maps, IAP, Virtual Briefing




### OPERATIONAL PERIOD

9/22/2021      0700  
                         to  
9/23/2021      0700



## ORGANIZATION ASSIGNMENT LIST (ICS 203)

<b>1. Incident Name:</b> CALDOR		<b>2. Operational Period: Date From:</b> 9/22/2021 Time From: 0700		<b>Date To:</b> 9/23/2021 Time To: 0700	
<b>3. Incident Commander(s) and Command Staff:</b>			<b>7. Operation Section:</b>		
IC	Mike Nobles, James Aragon(T)	Operations	Jim Snow, Mike Page(T)		
Deputy IC		Deputy Ops	Al Ward, Chris St Pierre(T)		
Safety Officer	Paul Tompkins, Mike Seymour(T), Trenton Prins(T)	Night Operations	Mike Koontz, Luis Gomez(T)		
Information Officer	Seneca Smith, Stephanie Bishop, DeLyn Sieliet(T)				
Liaison Officer	Don Smith(T), Alan Taylor(T), Ryan Toby (T)	Branch	I	Robert Szczepanek	
		Division/Group	G / T / W	Kevin Reese, Kevin DeJong(T), Charles Zimmerman(T)	
Agency/Organization	Name	Division/Group	Suppression Repair	Brad Stewart	
EI Dorado NF - AA	Jeff Marsolais	Division/Group			
EI Dorado NF - AA Rep.	Scot Rogers	Division/Group			
Lake Tahoe BMU - AA	Gwen Sanchez, Judy Palmer	Division/Group			
Humboldt Toiyabe NF - AA	Jon Stansfield	Branch	III	John Owings	
CalFIRE Arep	Mike Blankenheim	Division/Group	I / M	Jason Flores	
CalOES	Dave Stone, Kit Bailey	Division/Group	O / P	Rob Noxon	
EI Dorado SO	Deputy Greg Almos	Division/Group	Q	Kristian Litz, Andy Wordin(T)	
Sierra Pacific Ind.	Tim Tate	Division/Group	R	Aaron Schumacher, Garth Crow	
PG&E	Mike Webb	Division/Group	Suppression Repair	Rob Bertolina	
Amador County SO	LT. Jason Navarre	Branch	Night	TBD	
CHP	LT. Rick Hatfield	Division/Group	Night	TBD	
Cal Trans	Greg Duffy	Division/Group			
AT&T	Kevan Young	Division/Group			
BLM	Jerry Martinez	Division/Group			
EI Dorado Irrigation	Dan Corcoran	Division/Group			
East Fork FPD	Larry Goss	Branch	Strategic Planning	Greg Overacker, JT Sohr	
COVID Advisor	Greg Flory, Ben Gray	Division/Group			
<b>5. Planning Section:</b>					
Chief	Steve Anderson, Greg White(T)	Division/Group			
Deputy	Ken Bates	Division/Group			
Resource Unit	Mike Yeun, Chris Adams, Derek Acosta(T)	Division/Group			
Situation Unit	Matt Snyder, Ray Rook(T), John Hamer (V)	Branch			
Documentation Unit	Nancy Nordensten(T)(V-RIST)	Division/Group			
Demobilization Unit	Jan Grisedale	Division/Group			
GISS	Rene Gonzalez	Division/Group			
FBAN	Dan O'Connor	Division/Group			
IMET	Patrick Gilchrist, Shawn Palmquist(T)	Division/Group			
Human Resources	Adrian Escobedo	<b>Air Operations Branch</b>		Director:	JoAnn Overacker
Training Specialist	Derek Parker, Morgan Madruga(T)	Air Support Group Supervisor		Rex Sundstrom(T)	
Lead READ	Emma Williams, Jennifer House	Air Tactical Group Supervisor		Todd White	
			Helibase Manager	Cammie Roy, Scott Magargee(T)	
<b>6. Logistics Section</b>					
Chief	Scott Ashbach				
Supply Unit	Ruben Lopez(T)	<b>8. Finance/Administration Section:</b>			
Facilities Unit	Art Curley, Wendell Simmons(T)	Chief	Lisa Wilson(V)		
Ground Support Unit	Rickey Tootle, Chris Syler	Time Unit	Rebecca Lang(T)		
Communications Unit	Mike Greene	Cost Unit			
Medical Unit	Brandon Bennewate, Nic Stepanian	Comp/Claims Unit	Roger Waters, Tracy Nicholson (V)		
ITSS	Brett Davidson	PTRC			
FOOD	Mikeal Gates	EQTR	Cara Scott, Christina Welch, Rachel Acker(V), Katina Bryant(V)		
<b>Prepared By: Name:</b>	Greg White	<b>Position/Title:</b>	PSC2 (T)	<b>Signature:</b>	
<b>ICS 203</b>		<b>Date/Time:</b>	9/21/2021 2300 hours		



# INCIDENT WEATHER FORECAST



FORECAST NO: 35  
 PREDICTION FOR: 24 Hour Shift  
 SHIFT DATE: 09/22/21  
 FORECAST ISSUED: 09/21/21 1900

NAME OF FIRE: Caldor  
 UNIT: USFS El Dorado NF  
 SIGNED: Patrick Gilchrist/Shawn Palmquist (T)  
 Incident Meteorologist

## WEATHER DISCUSSION:

Hot, dry and breezy conditions will make for a heads up day today as a weak disturbance passes through Oregon pushing down on the upper ridge. Southwest winds will gust up into the 30s mph along the ridges by the afternoon. Poor to moderate recoveries can be expected tonight, with winds turning easterly by Thursday. Winds will be generally light Thursday, with the hot and dry conditions continuing.

## ...Hot, Dry, and Breezy Today...

### .TODAY...

Sky/weather.....Haze in the morning clearing by afternoon. Partly sunny.  
 Max temperature.....64 to 76 above 5000 feet and 76 to 84 below 5000 feet.  
 Min humidity.....20 to 25% above 5000 feet and 15 to 20% below 5000 feet.  
 Wind (20 ft).....  
     Slope/Valley.....Southwest 10-18 mph, with gusts to 25 mph in the afternoon.  
     Ridgetop.....Southwest 16-24 mph, with gusts to 30 mph in the afternoon.  
 Mixing height... increasing to 10000 ft MSL mid-afternoon.

### .TONIGHT...

Sky/weather.....Mostly clear.  
 Min temperature.....44 to 52 midslope to ridgetop. 40 to 45 valleys. (Upper 30s valleys east of the crest.)  
 Max humidity.....35 to 45% midslope to ridgetop. 55 to 65% valleys.  
 Wind (20 ft).....  
     Sheltered valleys...Becoming downslope/downvalley 2-5 mph.  
     Slope/valley.....Southwest 10-15 with gusts to 20 mph early in the evening becoming east-northeast 5 to 10 mph overnight.  
     Ridgetop.....Southwest 10-18 mph with gusts to 25 mph in the evening becoming east-northeast 5 to 15 mph overnight.

### .THURSDAY...

Sky/weather.....Partly cloudy.  
 Max temperature.....67 to 79 above 5000 feet and 79 to 88 below 5000 feet.  
 Min humidity.....18 to 25% above 5000 feet and 10 to 18% below 5000 feet.  
 Wind (20 ft).....  
     Slope/Valley.....East-northeast 8 to 15 mph.  
     Ridgetop.....East-northeast 10 to 18 mph.  
 Mixing height... increasing to 10000 ft MSL mid-afternoon.

Incident Weather Station Data – SCAN Code with Smart Phone  
 Branch I

Branch III



## FIRE BEHAVIOR FORECAST

<b>FORECAST NUMBER:</b> 6	<b>TYPE OF FIRE:</b> Vegetation
<b>FIRE NAME:</b> Caldor	<b>OPERATIONAL PERIOD:</b> Sept 22 <sup>nd</sup> 24 Hour
<b>DATE ISSUED:</b> Sept 21 <sup>st</sup>	<b>TIME ISSUED:</b> 2000
<b>UNIT:</b> CA El Dorado National Forest/Lake Tahoe Basin Management Unit	<b>SIGNED:</b> Dan O'Connor Fire Behavior Analyst (FBAN)

**WEATHER SUMMARY:** See detailed Fire Weather Forecast in IAP

### FUELS:

Fire areas include a range of conifer systems with Ponderosa, Jeffrey Pine, Incense Cedar, and manzanita in the lower elevations towards the west, transitioning up into an Upper Montane forest of Ponderosa, Lodgepole Pine and Red Fir closer to Lake Tahoe. Anticipate heavy fuel loading, drought stress, overstocked timber stands, and a lack of fire history to both the north and south of the current fire footprint. The El Dorado National Forest is currently classified as 'Extreme to Exceptional' drought by the US Drought Monitor, with Energy Release Components exceeding the 90<sup>th</sup> percentile, not far off all time high levels. Heavy dead and down fuels will likely burn completely, holding heat and actively consuming through all hours of the day. Fine dead fuel moisture is calculated at 4% or less.

### EXPECTED FIRE BEHAVIOR: *Based on the Warmest, Driest, Windiest Conditions Forecasted*

<u>Maximum Spotting Distance</u> ¾ mile <u>Probability of Ignition</u> 75%	Fuel Type/Model	Maximum Rate of Spread (chains/hour)	Maximum Flame Length (feet)
	Timber understory (TU5-Overstocked and/or dense reprod)	Head 25-35 ch/hr Flank 18-22 ch/hr	Head 12-15 ft Flank 8-10 ft
	Timber litter (TL6-closed canopy, ground fuels)	Head 12-15 ch/hr Flank 8-10 ch/hr	Head 4-6 ft Flank 2-4 ft

**General:** Hot, dry and windy today will keep the momentum going with growth in Division Quebec, anticipate torching, spotting, and active flanking to the north and east.

### SPECIFIC

**Branch 1 SW** flow will be mostly favorable for the western side of the fire. Potential for increased smoke production from needle cast burning interior, but should not pose threats to containment lines.

#### Branch 3

*Divisions India and Mike* have scattered heat that will produce smoke across the interiors, with more persistence in working through rocked out areas adjacent to the Desolation Wilderness. Repopulation in the Highway 50 corridor may bring an increase in service calls; potential for reburn remains in the green islands.

*Divisions Quebec and Romeo* fire has made its escape up and out of Caples Creek and will continue upslope runs, torching, and spotting within the Strawberry Creek drainage and North and East towards Little Round Mountain. As the fire moves up slope it will be more exposed to strong SW winds, so anticipate long range spotting out ahead of runs.

*Divisions Oscar and Papa* do have high severity fire areas in the interior, but the edges are more mosaic severity so reburning and flare ups with threats to containment lines and adjacent communities are still possible. Low relative humidity will likely have heavies and root wads burning again, producing smoke visible to residents.

**Night Operations:** Anticipate continuation of service calls with residents back in their homes down Highway 50. Stay vigilant with the potential for reburn in the dirty burn areas due to drought conditions.

### AIR OPERATIONS:

Smoke may impact aircraft access and visibility in Division Quebec all day

### SAFETY:

Can't rule out green pockets coming back to life in quiet areas of the fire with low RH and gusty SW winds.

Lookouts  
Communications  
Escape Routes  
Safety Zones

**Incident: CALDOR Fire CA-ENF -024030**

**Operation Period: Day /Night Shift 9/22-9/23/2021**

## **SAFETY MESSAGE**

### **Mop Up is Hazardous Work!**

- **Injury and accidents are common during the mop up phase.**
- **Gather situational awareness in your work area and communicate it.**
- **Reduce risk by identifying and mitigating hazards.**
- **Stay focused on task, don't let the routine nature of the assignment allow your mind to wander resulting in a loss of situational awareness.**
- **Take frequent breaks, stay hydrated, and manage fatigue.**

#### **MAJOR HAZARDS AND RISKS**

<b>STEEP TERRAIN CHIPPING OPS FATIGUE ASH PITS</b>	<b>ROLLING MATERIAL HAZMAT DEHYDRATION BUCKET DROPS</b>	<b>HEAVY EQUIPMENT SNAGS COMPLACENCY TRAFFIC</b>
--	---	--

*Be sure all elements of your safety plan are in place prior to engagement*

#### **Look Up, Look Down, Look Around During Mop Up**

**\*Look Up:** Check the sky for any weather changes such as building or approaching thunderstorms, wind shifts or increasing in speed. Watch for air operations and water drops. Look for snags and the potential for rolling material.

**\*Look Down:** Watch your footing. Keep an eye out for snakes, bee's nests, Stump holes, and ash pits.

**\* Look Around** Check for flagging identifying hazards in the area, and general terrain features. Keep an eye on fellow firefighters for signs of heat stress and fatigue.

#### **Watch for Over Confidence During Mop Up**

**\*Driving:** As you become more familiar with the road systems, we tend to increase speeds. Please be aware of this and keep speeds down, watch for people and vehicles along the roads, and drive defensively.

**\*PPE:** Please recognize that in low stress situations like mop up, it is easy to over-look the importance of wearing the appropriate PPE include eye protection.

**\*Work Area:** Familiarity with your work area can result in a lowering of awareness, especially as conditions change.

**Safety Officers : Trenton Prins SOF2 (T)**

# ASSIGNMENT LIST (ICS 204 WF)

CONTROLLED UNCLASSIFIED  
INFORMATION/BASIC

<b>1. Incident Name:</b> <p style="text-align: center;"><b>CALDOR</b></p>	<b>2. Operational Period:</b> Date From: 09/22/21    Date To: 09/23/21 Time From: 0700    Time To: 0700	<b>3. Branch</b> <b>Division</b> <p style="text-align: center;"><b>I</b>    <b>G/T/W</b></p>
--	---	---

**4. Operations Personnel:** Page 1 of 1

Operations Section Chief: <b>Jim Snow, Mike Page(T)</b> Branch Director: <b>Robert Szczepanek</b> Division/Group Supervisor: <b>Kevin Reese, Kevin DeJong(T), Charles Zimmerm</b>	Night Ops: <b>Mike Koontz, Luis Gomez(T)</b> Deputy Ops: <b>Al Ward, Chris St Pierre(T)</b> Air Attack: <b>Todd White</b>
---	---

**5. Resources Assigned:** \*\* Resources Below in Bold are 12 Hour \*\*

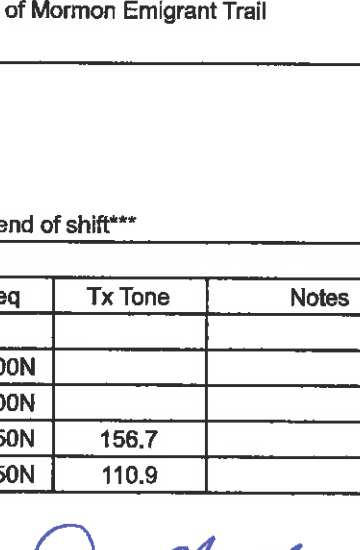
Resource Identifier	ALS	LWD	Leader	Personnel	Request #	Hours	Reporting Location
HC2 BLUE MOUNTAIN		10/3	<b>PEREZ</b>	20	C-50061	0700-1900	8 Mile Camp
ENG3 NV-B5331		9/30	<b>ARROYO</b>	4	E-50207	0700-1900	8 Mile Camp
ENG3 ROCKY MTN		9/30	<b>STREHLE</b>	3	E-50206	0700-1900	8 Mile Camp
ENG4 HEART VENTURES 1		9/30	<b>WETZEL</b>	3	E-50193	0700-1900	8 Mile Camp
ENG6 J3 CONTRACTING		10/3	<b>EASLEY</b>	3	E-50275	0700-1900	8 Mile Camp
ENG6 WHITEGRASS FIRE		9/30	<b>WHITEGRASS</b>	3	E-50266	0700-1900	8 Mile Camp
ENG6 GOODING		9/30	<b>MCKINNEY</b>	2	E-50199	0700-1900	8 Mile Camp
ENG6 RED DOG		9/30	<b>ENGLAND</b>	3	E-50205	0700-1900	8 Mile Camp
ENG6 SCHOLL FIRE & FUEL		10/3	<b>MAHARREY</b>	3	E-50291	0700-1900	8 Mile Camp
ENG6 COOPER CONTRACTING		10/3	<b>MEDRANO</b>	3	E-50292	0700-1900	8 Mile Camp
SKD SOFT TRACK ATTACK		10/4	<b>EMERY</b>	1	E-246	0700-1900	8 Mile Camp
SOFR BARNHART		9/25	<b>BARNHART</b>	1	O-20796	0700-1900	8 Mile Camp
SOFR KAMNIKAR		9/24	<b>KAMINKAR</b>	1	O-20794	0700-1900	8 Mile Camp
EMPF DIEM	X	9/30	<b>DIEM</b>	1	O-50312	0700-1900	8 Mile Camp
EMPF STAPLES	X	9/22	<b>STAPLES</b>	1	E-50129	0700-1900	8 Mile Camp
EMPF HANNA	X	9/22	<b>HANNA</b>	1	E-50129	0700-1900	8 Mile Camp
EMTF MAKEMSON		9/30	<b>MAKEMSON</b>	1	O-50317	0700-1900	8 Mile Camp

**6. Work Assignments:**  
 TASK: Secure existing line and provide for tactical patrol within the Hwy 50 corridor. Coordinate with REAFs and mop up to the extent necessary on the fires edge and within the perimeter where infrastructure and values at risk are present  
 PURPOSE: Minimize any fire progression and ensure the safety of those working on the west side of Mormon Emigrant Trail  
 END STATE: Fires edge in the division is controlled and escape is improbable

**7. Special Instructions:**  
 Backhaul trash, excess supplies and provide a location for accountable property  
 Identify and coordinate the removal of hazard trees  
 Resources denoted with \* is identified as I/A resources within the TFR  
 \*\*\*Resources need to report to 8 Mile Camp (4260 8 Mile Rd, Camino, CA 95709) for briefing and end of shift\*\*\*

**8. Communications**

Name	Ch	Function	Rx Freq	Rx Tone	Tx Freq	Tx Tone	Notes
COMMAND SEE ICS 205	1	COMMAND					
NIFC T1	8	TACTICAL	168.0500N		168.0500N		
A/G CMD	14	A/G CMD	167.9500N		167.9500N		
CALCORD	15	COORDINATION	156.0750N	156.7	156.0750N	156.7	
GUARD 16	16	EMERGENCY	168.6250N		168.6250N	110.9	

**9. Prepared by: Name:** Mike Yeun, Chris Adams, Derek Acosta(T)    RESL  
 Signature: 

ICS 204    Date/Time: 9/21/2021 2200    Personnel Count: 54

# ASSIGNMENT LIST (ICS 204 WF)

CONTROLLED UNCLASSIFIED  
INFORMATION/BASIC

<b>1. Incident Name:</b> <p style="text-align: center;"><b>CALDOR</b></p>	<b>2. Operational Period:</b> Date From: 09/22/21    Date To: 09/23/21 Time From: 0700    Time To: 0700	<b>3. Branch</b> <b>Division</b> <p style="text-align: center;"><b>I    Suppression Repair</b></p>
--	---	---

<b>4. Operations Personnel:</b> Operations Section Chief: <b>Jim Snow, Mike Page(T)</b> Branch Director: <b>Robert Szczepanek</b> Division/Group Supervisor: <b>Brad Stewart</b>	Night Ops: <b>Mike Koontz, Luis Gomez(T)</b> Deputy Ops: <b>Al Ward, Chris St Pierre(T)</b> Air Attack: <b>Todd White</b>
---	---

5. Resources Assigned:		** Resources Below in Bold are 12 Hour **					
Resource Identifier	ALS	LWD	Leader	Personnel	Request #	Hours	Reporting Location
TFLD LOWELL		9/29	LOWELL	1	O-568	0700-1900	8 Mile Camp
HEQB SMITH		9/27	SMITH	1	O-562	0700-1900	8 Mile Camp
<b>GROUP #1 MET</b>							
WTS1 ASAP		10/2	DIXON	2	E-20015	0700-1900	8 Mile Camp
FEL1 SIERRA NEVADA		9/30	D. WASS	1	E-699	0700-1900	8 Mile Camp
EXCA2 LONESTAR ENT		9/30	MILLER	2	E-50231	0700-1900	8 Mile Camp
SKD SIERRA FOREST 2		9/30	J. WASS	1	E-705	0700-1900	8 Mile Camp
SKD SIERRA FOREST 3		9/30	DUARTE	1	E-706	0700-1900	8 Mile Camp
SKD T1 FORKNER		9/25	DIAL	2	E-50152	0700-1900	8 Mile Camp
PROC PATHFINDER		9/30	FULTON	1	E-730	0700-1900	8 Mile Camp
SKD SIERRA FOREST 2		9/30	J. WASS	1	E-705	0700-1900	8 Mile Camp
LOAD HEAVYHAUL		9/29	LESLIE	2	E-50226	0700-1900	8 Mile Camp
LOAD ROMINE TIMBER 1				1	E-724	0700-1900	8 Mile Camp
LOG TRK VOLCANO CREEK			ELLIOT	1	E-50156	0700-1900	8 Mile Camp
LOG TRK ARBORWORKS		9/27	YOUNGREN	1	E-50157	0700-1900	8 Mile Camp
LOG RIDGE LOGGING		9/30	SLACK	1	E-737	0700-1900	8 Mile Camp
LOG HEAVYHAUL		9/30	LESLIE	1	E-738	0700-1900	8 Mile Camp
FAL1 HERREN		9/22	HERREN	2	O-532	0700-1900	8 Mile Camp
FAL1 A&F ENTERPRISES		10/4	BOKISH	1	O-50088	0700-1900	8 Mile Camp

**6. Work Assignments:**  
 TASK: Perform priority suppression repair work within Branch 1. Repair contingency line along Peavine Ridge and Granite Springs Rd while continuing Hazard Tree Removal along Mormon Emigrant Trail and Sierra at Tahoe  
 PURPOSE: Minimize any near-term environmental resource impacts as a result of fire suppression efforts  
 END STATE: Watershed and areas adjacent to values at risk are protected using the approved standard

**7. Special Instructions:**  
 Backhaul trash, excess supplies and provide a location for accountable property  
 Identify and coordinate the removal of hazard trees  
 Resources denoted with \* is identified as I/A resources within the TFR  
 \*\*\*Resources need to report to 8 Mile Camp (4260 8 Mile Rd, Camino, CA 95709) for briefing and end of shift\*\*\*

8. Communications							
Name	Ch	Function	Rx Freq	Rx Tone	Tx Freq	Tx Tone	Notes
COMMAND SEE ICS 205	1	COMMAND					
NIFC T6	9	TACTICAL	166.7750N		166.7750N		
A/G CMD	14	A/G CMD	167.9500N		167.9500N		
CALCORD	15	COORDINATION	156.0750N	156.7	156.0750N	156.7	
GUARD 16	16	EMERGENCY	168.6250N		168.6250N	110.9	

<b>9. Prepared by: Name:</b>	Mike Yeun, Chris Adams, Derek Acosta(T)	RESL	Signature:
<b>ICS 204</b>	Date/Time: 9/21/2021 2200	Personnel Count: 23	



# ASSIGNMENT LIST (ICS 204 WF)

CONTROLLED UNCLASSIFIED  
INFORMATION/BASIC

<b>1. Incident Name:</b> <p style="text-align: center; font-size: 1.2em;">CALDOR</p>		<b>2. Operational Period:</b> Date From: 09/22/21      Date To: 09/23/21 Time From: 0700              Time To: 0700				<b>3. Branch</b> <b>Division</b> <p style="text-align: center; font-size: 1.5em;">I                      Suppression                                  Repair</p>	
						Page 2 of 4	
<b>4. Operations Personnel:</b> Operations Section Chief: <b>Jim Snow, Mike Page(T)</b> Branch Director: <b>Robert Szczepanek</b> Division/Group Supervisor: <b>Brad Stewart</b>				Night Ops: <b>Mike Koontz, Luis Gomez(T)</b> Deputy Ops <b>Al Ward, Chris St Pierre(T)</b> Air Attack: <b>Todd White</b>			
<b>5. Resources Assigned:</b>		<b>** Resources Below in Bold are 12 Hour **</b>					
Resource Identifier	ALS	LWD	Leader	Personnel	Request #	Hours	Reporting Location
<b>GROUP #2 MET</b>							
FEL1 PATHFINDER		9/30	<b>SMITH</b>	2	E-702	0700-1900	8 Mile Camp
SKD SIERRA FOREST 1		9/30	<b>MARTIN</b>	1	E-704	0700-1900	8 Mile Camp
SKD SIERRA FOREST 5		9/30	<b>MARVIN</b>	1	E-708	0700-1900	8 Mile Camp
LOAD SIERRA NEVADA 1		9/30	<b>STANDBRIDGE</b>	1	E-50172	0700-1900	8 Mile Camp
LOAD ROMINE TIMBER 2				1	E-725	0700-1900	8 Mile Camp
FMOD A&F ENTERPRISES 1		9/27	<b>PAFFORD</b>	2	O-234	0700-1900	8 Mile Camp
<b>GROUP #3 GRINDING</b>							
GRND ARBORWORKS		9/30	<b>MEALIN</b>	1	E-731	0700-1900	8 Mile Camp
LOAD BAMFORD 1		9/29	<b>MONTGOMERY</b>	1	E-720	0700-1900	8 Mile Camp
LOAD SIERRA FOREST		9/30	<b>LANGLEY</b>	1	E-50159	0700-1900	8 Mile Camp
LOAD BAMFORD 3		9/29	<b>MONTGOMERY</b>	1	E-723	0700-1900	8 Mile Camp
<b>GROUP #4 SKI RESORT</b>							
TFLD(T) WARD		9/22	<b>WARD</b>	1	O-545	0700-1900	8 Mile Camp
FEL2 J&R LOGGING		9/30	<b>JIMENEZ</b>	1	E-50151	0700-1900	8 Mile Camp
PROC J&R LOGGING		9/30	<b>JIMENEZ</b>	1	E-50150	0700-1900	8 Mile Camp
SKD SIERRA FOREST 4		9/30	<b>CAMPBELL</b>	1	E-707	0700-1900	8 Mile Camp
SKD J&R LOGGING		10/1	<b>JIMENEZ</b>	1	E-712	0700-1900	8 Mile Camp
SKD T1 CECIL LOGGING		9/29	<b>HUNTER</b>	1	E-50153	0700-1900	8 Mile Camp
LOAD BAMFORD 2		9/29	<b>MONTGOMERY</b>	1	E-721	0700-1900	8 Mile Camp
<b>6. Work Assignments:</b> TASK: Perform priority suppression repair work within Branch 1. Repair contingency line along Peavine Ridge and Granite Springs Rd while continuing Hazard Tree Removal along Mormon Emigrant Trail and Sierra at Tahoe PURPOSE: Minimize any near-term environmental resource impacts as a result of fire suppression efforts END STATE: Watershed and areas adjacent to values at risk are protected using the approved standard							
<b>7. Special Instructions:</b> Backhaul trash, excess supplies and provide a location for accountable property Identify and coordinate the removal of hazard trees Resources denoted with * is identified as I/A resources within the TFR ***Resources need to report to 8 Mile Camp (4260 8 Mile Rd, Camino, CA 95709) for briefing and end of shift***							
<b>8. Communications</b>							
Name	Ch	Function	Rx Freq	Rx Tone	Tx Freq	Tx Tone	Notes
COMMAND SEE ICS 205	1	COMMAND					
NIFC T6	9	TACTICAL	166.7750N		166.7750N		
A/G CMD	14	A/G CMD	167.9500N		167.9500N		
CALCORD	15	COORDINATION	156.0750N	156.7	156.0750N	156.7	
GUARD 16	16	EMERGENCY	168.6250N		168.6250N	110.9	
<b>9. Prepared by: Name:</b>		Mike Yeun, Chris Adams, Derek Acosta(T)		RESL		Signature:	
<b>ICS 204</b>		Date/Time: 9/21/2021 2200		Personnel Count: 15			

# ASSIGNMENT LIST (ICS 204 WF)

CONTROLLED UNCLASSIFIED  
INFORMATION//BASIC

<b>1. Incident Name:</b> <p style="text-align: center; font-weight: bold;">CALDOR</p>	<b>2. Operational Period:</b> Date From: 09/22/21    Date To: 09/23/21 Time From: 0700        Time To: 0700	<b>3. Branch</b> <b>Division</b> <p style="text-align: center; font-size: 2em; font-weight: bold;">I                      Suppression    Repair</p>
<b>4. Operations Personnel:</b>		Page 3 of 4

Operations Section Chief: <b>Jim Snow, Mike Page(T)</b> Branch Director: <b>Robert Szczepanek</b> Division/Group Supervisor: <b>Brad Stewart</b>	Night Ops: <b>Mike Koontz, Luis Gomez(T)</b> Deputy Ops <b>Al Ward, Chris St Pierre(T)</b> Air Attack: <b>Todd White</b>
--	--

5. Resources Assigned:	** Resources Below in Bold are 12 Hour **							
Resource Identifier	ALS	LWD	Leader	Personnel	Request #	Hours	Reporting Location	
<b>GROUP #5 WRIGHTS LAKE</b>								
HEQB(T) GOTTS			<b>GOTTS</b>	1	<b>O-541</b>	<b>0700-1900</b>	<b>8 Mile Camp</b>	
HEQB(T) APACHITO			<b>APACHITO</b>	1	<b>O-550</b>	<b>0700-1900</b>	<b>8 Mile Camp</b>	
DO22 HERTZIG		9/27	<b>HERTZIG</b>	1	<b>E-101</b>	<b>0700-1900</b>	<b>8 Mile Camp</b>	
DO23 TOM'S EARTHMOVING		9/30	<b>FUNES</b>	2	<b>E-50239</b>	<b>0700-1900</b>	<b>8 Mile Camp</b>	
* EXCA ENF 7462		9/26	<b>LANGENDERFER</b>	1	<b>E-728</b>	<b>0700-1900</b>	<b>8 Mile Camp</b>	
EXCA VENTANA RANCH		9/25	<b>LOVERTON</b>	1	<b>E-689</b>	<b>0700-1900</b>	<b>8 Mile Camp</b>	
EXCA EMERSON		9/25	<b>SHERRILL</b>	1	<b>E-50154</b>	<b>0700-1900</b>	<b>8 Mile Camp</b>	
EXCA INGRAM		9/24	<b>WHEELER</b>	1	<b>E-50155</b>	<b>0700-1900</b>	<b>8 Mile Camp</b>	
EXCA BRUCE YOUNG		10/1	<b>YOUNG</b>	1	<b>E-241</b>	<b>0700-1900</b>	<b>8 Mile Camp</b>	
MAST PVT (E-58)			<b>FINDLETON</b>	1	<b>E-58</b>	<b>0700-1900</b>	<b>8 Mile Camp</b>	
SKDG DC FIRE		10/2	<b>MARTIN</b>	2	<b>E-247</b>	<b>0700-1900</b>	<b>8 Mile Camp</b>	
REAF FOULK		9/29	<b>FOULK</b>	1	<b>O-181</b>	<b>0700-1900</b>	<b>8 Mile Camp</b>	

**6. Work Assignments:**  
 TASK: Perform priority suppression repair work within Branch 1. Repair contingency line along Peavine Ridge and Granite Springs Rd while continuing Hazard Tree Removal along Mormon Emigrant Trail and Sierra at Tahoe  
 PURPOSE: Minimize any near-term environmental resource impacts as a result of fire suppression efforts  
 END STATE: Watershed and areas adjacent to values at risk are protected using the approved standard

**7. Special Instructions:**  
 Backhaul trash, excess supplies and provide a location for accountable property  
 Identify and coordinate the removal of hazard trees  
 Resources denoted with \* is identified as I/A resources within the TFR  
 \*\*\*Resources need to report to 8 Mile Camp (4260 8 Mile Rd, Camino, CA 95709) for briefing and end of shift\*\*\*

**8. Communications**

Name	Ch	Function	Rx Freq	Rx Tone	Tx Freq	Tx Tone	Notes
COMMAND SEE ICS 205	1	COMMAND					
NIFC T6	9	TACTICAL	166.7750N		166.7750N		
A/G CMD	14	A/G CMD	167.9500N		167.9500N		
CALCORD	15	COORDINATION	156.0750N	156.7	156.0750N	156.7	
GUARD 16	16	EMERGENCY	168.6250N		168.6250N	110.9	

<b>9. Prepared by: Name:</b>	Mike Yeun, Chris Adams, Derek Acosta(T)	RESL	Signature:
ICS 204	Date/Time: 9/21/2021 2200	Personnel Count: 14	

# ASSIGNMENT LIST (ICS 204 WF)

CONTROLLED UNCLASSIFIED  
INFORMATION//BASIC

<b>1. Incident Name:</b> <b>CALDOR</b>	<b>2. Operational Period:</b> Date From: 09/22/21    Date To: 09/23/21 Time From: 0700    Time To: 0700	<b>3. Branch</b> <b>Division</b> <b>1</b> <b>Suppression Repair</b>
---	---	--

<b>4. Operations Personnel:</b>		Page 4 of 4
Operations Section Chief: <b>Jim Snow, Mike Page(T)</b> Branch Director: <b>Robert Szczepanek</b> Division/Group Supervisor: <b>Brad Stewart</b>	Night Ops: <b>Mike Koontz, Luis Gomez(T)</b> Deputy Ops: <b>Al Ward, Chris St Pierre(T)</b> Air Attack: <b>Todd White</b>	

<b>5. Resources Assigned:</b>		** Resources Below in Bold are 12 Hour **					
Resource Identifier	ALS	LWD	Leader	Personnel	Request #	Hours	Reporting Location
<b>GROUP #6 KIRKWOOD</b>							
TFLD HUMBACH			<b>HUMBACH</b>	1	<b>O-566</b>	<b>0700-1900</b>	<b>8 Mile Camp</b>
TFLD(T) BERKE			<b>BERKE</b>	1	<b>O-576</b>	<b>0700-1900</b>	<b>8 Mile Camp</b>
HC2 MOUNTAINEER MT2		9/26	<b>WENCESLAO</b>	20	<b>C-50043</b>	<b>0700-1900</b>	<b>8 Mile Camp</b>
CHIP WOOD CHUCK		9/25	<b>TINGLER</b>	1	<b>E-50174</b>	<b>0700-1900</b>	<b>8 Mile Camp</b>
EXCA WEST WOOD		9/26	<b>WEST</b>	2	<b>E-232</b>	<b>0700-1900</b>	<b>8 Mile Camp</b>
EXCA COTTONWOOD		9/29	<b>HARTLEY</b>	2	<b>E-687</b>	<b>0700-1900</b>	<b>8 Mile Camp</b>
EXCA CLAYTON		9/30	<b>TITTLE</b>	2	<b>E-50228</b>	<b>0700-1900</b>	<b>8 Mile Camp</b>
FAL1 MOEN TIMBER FALLING		10/4	<b>MOEN</b>	1	<b>O-50089</b>	<b>0700-1900</b>	<b>8 Mile Camp</b>
CARE AMBULANCE 527		10/3	<b>GLINE/HATZ</b>	2	<b>E-20628</b>	<b>0700-1900</b>	<b>8 Mile Camp</b>
REAF BROWN			<b>BROWN</b>	1	<b>O-169</b>	<b>0700-1900</b>	<b>8 Mile Camp</b>
ARCH COOPER			<b>COOPER</b>	1	<b>O-180</b>	<b>0700-1900</b>	<b>8 Mile Camp</b>
ARCH(T) MARTI			<b>MARTI</b>	1	<b>O-572</b>	<b>0700-1900</b>	<b>8 Mile Camp</b>

**6. Work Assignments:**  
 TASK: Perform priority suppression repair work within Branch 1. Repair contingency line along Peavine Ridge and Granite Springs Rd while continuing Hazard Tree Removal along Mormon Emigrant Trail and Sierra at Tahoe  
 PURPOSE: Minimize any near-term environmental resource impacts as a result of fire suppression efforts  
 END STATE: Watershed and areas adjacent to values at risk are protected using the approved standard

**7. Special Instructions:**  
 Backhaul trash, excess supplies and provide a location for accountable property  
 Identify and coordinate the removal of hazard trees  
 Resources denoted with \* is identified as I/A resources within the TFR  
 \*\*\*Resources need to report to 8 Mile Camp (4260 8 Mile Rd, Camino, CA 95709) for briefing and end of shift\*\*\*

**8. Communications**

Name	Ch	Function	Rx Freq	Rx Tone	Tx Freq	Tx Tone	Notes
COMMAND SEE ICS 205	1	COMMAND					
NIFC T6	9	TACTICAL	166.7750N		166.7750N		
A/G CMD	14	A/G CMD	167.9500N		167.9500N		
CALCORD	15	COORDINATION	156.0750N	156.7	156.0750N	156.7	
GUARD 16	16	EMERGENCY	168.6250N		168.6250N	110.9	

**9. Prepared by: Name:** Mike Yeun, Chris Adams, Derek Acosta(T)    RESL  
 Signature:   
**ICS 204**    Date/Time: 9/21/2021 2200    Personnel Count: 35

# ASSIGNMENT LIST (ICS 204 WF)

CONTROLLED UNCLASSIFIED  
INFORMATION/BASIC

<b>1. Incident Name:</b> <p style="text-align: center;"><b>CALDOR</b></p>	<b>2. Operational Period:</b> Date From: 09/22/21    Date To: 09/23/21 Time From: 0700        Time To: 0700	<b>3. Branch</b> <b>Division</b> <p style="text-align: center;"><b>III</b>                              <b>I / M</b></p>
--	---	---

Page 1 of 2

<b>4. Operations Personnel:</b> Operations Section Chief: <b>Jim Snow, Mike Page(T)</b> Branch Director: <b>John Owings</b> Division/Group Supervisor: <b>Jason Flores</b>	Night Ops: <b>Mike Koontz, Luis Gomez(T)</b> Deputy Ops <b>Al Ward, Chris St Pierre(T)</b> Air Attack: <b>Todd White</b>
---	--

<b>5. Resources Assigned:</b>		** Resources Below in Bold are 12 Hour **					
Resource Identifier	ALS	LWD	Leader	Personnel	Request #	Hours	Reporting Location
<b>WFM BLACK HILLS</b>		<b>9/24</b>	<b>DUEKEER</b>	10	<b>E-50208</b>	<b>0700-1900</b>	<b>HEAVENLY ICP</b>
<b>SMOD NMCIF ACOMA 2</b>		<b>9/23</b>	<b>CARABAJAL</b>	16	<b>O-50194</b>	<b>0700-1900</b>	<b>HEAVENLY ICP</b>
<b>HC2 SZ FORESTRY</b>		<b>10/5</b>	<b>FULLERTON</b>	19	<b>C-50068</b>	<b>0700-1900</b>	<b>HEAVENLY ICP</b>
<b>ENG3 CCD 3363</b>		<b>9/30</b>	<b>WILLIAMS</b>	5	<b>E-50196</b>	<b>0700-1900</b>	<b>HEAVENLY ICP</b>
<b>ENG3 DS FIRE SUPPRESSION</b>		<b>9/27</b>	<b>DAGNELL</b>	3	<b>E-50161</b>	<b>0700-1900</b>	<b>HEAVENLY ICP</b>
<b>ENG3 NWS 1667</b>		<b>9/28</b>	<b>ARNDT</b>	6	<b>E-50177</b>	<b>0700-1900</b>	<b>HEAVENLY ICP</b>
<b>ENG3 TIMBERLINE</b>		<b>10/3</b>	<b>ANTONIO</b>	3	<b>E-50287</b>	<b>0700-1900</b>	<b>HEAVENLY ICP</b>
<b>ENG4 DUKE CITY 401</b>		<b>10/3</b>	<b>LAKE</b>	3	<b>E-50276</b>	<b>0700-1900</b>	<b>HEAVENLY ICP</b>
<b>ENG6 TX-TXF E641</b>		<b>9/27</b>	<b>UAL</b>	4	<b>E-466</b>	<b>0700-1900</b>	<b>HEAVENLY ICP</b>
<b>ENG6 FIRECO LLC</b>		<b>10/3</b>	<b>DOUGLASS</b>	3	<b>E-50282</b>	<b>0700-1900</b>	<b>HEAVENLY ICP</b>
<b>ENG6 METHOW RIVER 11</b>		<b>10/3</b>	<b>BELL</b>	3	<b>E-50277</b>	<b>0700-1900</b>	<b>HEAVENLY ICP</b>
<b>ENG6 HECK OF A FIRE</b>		<b>10/3</b>	<b>HECK</b>	3	<b>E-50220</b>	<b>0700-1900</b>	<b>HEAVENLY ICP</b>
<b>ENG6 METAL WORKS</b>		<b>10/3</b>	<b>SOUTHWICK</b>	3	<b>E-50281</b>	<b>0700-1900</b>	<b>HEAVENLY ICP</b>
<b>ENG6 FLASHOVER</b>		<b>10/2</b>	<b>VINCENT</b>	3	<b>E-50209</b>	<b>0700-1900</b>	<b>HEAVENLY ICP</b>
<b>WTS2 MARTIN</b>		<b>10/3</b>	<b>MARTIN</b>	1	<b>E-50241</b>	<b>0700-1900</b>	<b>HEAVENLY ICP</b>
<b>WTS3 RAVEN FIRE LLC</b>		<b>10/2</b>	<b>GADSBY</b>	1	<b>E-50249</b>	<b>0700-1900</b>	<b>HEAVENLY ICP</b>
<b>WTS3 BUSCHER ENGINES</b>		<b>10/3</b>	<b>BUSCHER</b>	1	<b>E-50289</b>	<b>0700-1900</b>	<b>HEAVENLY ICP</b>

**6. Work Assignments:**  
 TASK: Actively suppress any fire south of Lyons Lake. Utilize natural barriers as containment lines and provide for perimeter control near the communities of Wrights Lake and Echo Lakes. Mop up to the extent necessary on the fires edge and provide for tactical patrol, responding to community needs along Hwy 50  
 PURPOSE: Minimize any fire progression and ensure the safety of those working north of Hwy 50  
 END STATE: Fires edge in the division is controlled and escape is improbable

**7. Special Instructions:**  
 Backhaul trash, excess supplies and provide a location for accountable property  
 Identify and coordinate the removal of hazard trees  
 Resources denoted with \* is identified as I/A resources within the TFR  
 Medic 60, ALS Ambulance for Highway 50 patrol  
 \*\*\*Resources need to report to Heavenly ICP (3860 Saddle Rd., South Lake Tahoe, CA 96150) for briefing and end of shift\*\*\*

<b>8. Communications</b>							
Name	Ch	Function	Rx Freq	Rx Tone	Tx Freq	Tx Tone	Notes
COMMAND SEE ICS 205	1	COMMAND					
NIFC T1	6	TACTICAL	168.0500N		168.0500N		
A/G CMD	14	A/G CMD	167.9500N		167.9500N		
CALCORD	15	COORDINATION	156.0750N	156.7	156.0750N	156.7	
GUARD 16	16	EMERGENCY	168.6250N		168.6250N	110.9	

**9. Prepared by: Name:** Mike Yeun, Chris Adams, Derek Acosta(T)                      RESL  
 Signature:

**ICS 204**                      Date/Time: 9/21/2021 2200                      Personnel Count: 87

# ASSIGNMENT LIST (ICS 204 WF)

CONTROLLED UNCLASSIFIED  
INFORMATION/BASIC

<b>1. Incident Name:</b> <p style="text-align: center; font-weight: bold;">CALDOR</p>	<b>2. Operational Period:</b> Date From: 09/22/21    Date To: 09/23/21 Time From: 0700    Time To: 0700	<b>3. Branch</b> <b>Division</b> <p style="text-align: center; font-size: 1.5em;">III            I / M</p>
--	---	---

<b>4. Operations Personnel:</b> Operations Section Chief: <b>Jim Snow, Mike Page(T)</b> Branch Director: <b>John Owings</b> Division/Group Supervisor: <b>Jason Flores</b>	Night Ops: <b>Mike Koontz, Luis Gomez(T)</b> Deputy Ops: <b>Al Ward, Chris St Pierre(T)</b> Air Attack: <b>Todd White</b>
---	---

5. Resources Assigned:		** Resources Below in Bold are 12 Hour **					
Resource Identifier	ALS	LWD	Leader	Personnel	Request #	Hours	Reporting Location
FAL1 CTL BLAIR		9/29	<b>BLAIR</b>	1	<b>O-50346</b>	<b>0700-1900</b>	<b>HEAVENLY ICP</b>
FAL1 CTL ELDERD		9/29	<b>ELDERD</b>	1	<b>O-50347</b>	<b>0700-1900</b>	<b>HEAVENLY ICP</b>
FAL1 CTL WHITE		9/29	<b>WHITE</b>	1	<b>O-50348</b>	<b>0700-1900</b>	<b>HEAVENLY ICP</b>
FAL1 CTL GREEN		9/29	<b>GREEN</b>	1	<b>O-50349</b>	<b>0700-1900</b>	<b>HEAVENLY ICP</b>
FAL1 CTL HOLLAND		9/29	<b>HOLLAND</b>	1	<b>O-50350</b>	<b>0700-1900</b>	<b>HEAVENLY ICP</b>
SKD2 CTL FOREST MGMT		9/29	<b>KREGOSKI</b>	6	<b>E-50188</b>	<b>0700-1900</b>	<b>HEAVENLY ICP</b>
LOAD CTL FOREST MGMT 1		9/29	<b>KREGOSKI</b>	6	<b>E-50189</b>	<b>0700-1900</b>	<b>HEAVENLY ICP</b>
LOAD CTL FOREST MGMT 2		9/29	<b>KREGOSKI</b>	6	<b>E-50187</b>	<b>0700-1900</b>	<b>HEAVENLY ICP</b>
STEN DAVIS		10/5	<b>DAVIS</b>	1	<b>O-50450</b>	<b>0700-1900</b>	<b>HEAVENLY ICP</b>
TFLD OOSAHWE		9/29	<b>OOSAHWE</b>	1	<b>O-50290</b>	<b>0700-1900</b>	<b>HEAVENLY ICP</b>
FMOD UNDERDOG 3		9/25	<b>RILEY</b>	2	<b>O-50086</b>	<b>0700-1900</b>	<b>HEAVENLY ICP</b>
EMPF CRUMPACKER	X	9/27	<b>CRUMPACKER</b>	1	<b>O-50263</b>	<b>0700-1900</b>	<b>HEAVENLY ICP</b>
EMPF VASQUEZ	X	9/30	<b>VASQUEZ</b>	1	<b>O-50379</b>	<b>0700-1900</b>	<b>HEAVENLY ICP</b>
EMPF BUBEN	X	9/27	<b>BUBEN</b>	1	<b>O-50170</b>	<b>0700-1900</b>	<b>HEAVENLY ICP</b>
EMTF FLANDERS		9/27	<b>FLANDERS</b>	1	<b>O-50276</b>	<b>0700-1900</b>	<b>HEAVENLY ICP</b>

**6. Work Assignments:**  
 TASK: Actively suppress any fire south of Lyons Lake. Utilize natural barriers as containment lines and provide for perimeter control near the communities of Wrights Lake and Echo Lakes. Mop up to the extent necessary on the fires edge and provide for tactical patrol, responding to community needs along Hwy 50  
 PURPOSE: Minimize any fire progression and ensure the safety of those working north of Hwy 50  
 END STATE: Fires edge in the division is controlled and escape is improbable

**7. Special Instructions:**  
 Backhaul trash, excess supplies and provide a location for accountable property  
 Identify and coordinate the removal of hazard trees  
 Resources denoted with \* is identified as I/A resources within the TFR  
 Medic 60, ALS Ambulance for Highway 50 patrol  
 \*\*\*Resources need to report to Heavenly ICP (3860 Saddle Rd., South Lake Tahoe, CA 96150) for briefing and end of shift\*\*\*

8. Communications							
Name	Ch	Function	Rx Freq	Rx Tone	Tx Freq	Tx Tone	Notes
COMMAND SEE ICS 205	1	COMMAND					
NIFC T1	6	TACTICAL	168.0500N		168.0500N		
A/G CMD	14	A/G CMD	167.9500N		167.9500N		
CALCORD	15	COORDINATION	156.0750N	156.7	156.0750N	156.7	
GUARD 16	16	EMERGENCY	168.6250N		168.6250N	110.9	

<b>9. Prepared by: Name:</b>	Mike Yeun, Chris Adams, Derek Acosta(T)	RESL	Signature:
<b>ICS 204</b>	Date/Time: 9/21/2021 2200	Personnel Count: 31	

# ASSIGNMENT LIST (ICS 204 WF)

CONTROLLED UNCLASSIFIED  
INFORMATION/BASIC

<b>1. Incident Name:</b> <p style="text-align: center;"><b>CALDOR</b></p>	<b>2. Operational Period:</b> Date From: 09/22/21    Date To: 09/23/21 Time From: 0700    Time To: 0700	<b>3. Branch</b> <b>Division</b> <p style="text-align: center;"><b>III</b>    <b>O / P</b></p>
--	---	---

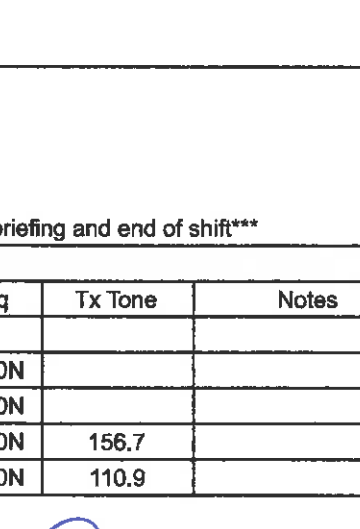
<b>4. Operations Personnel:</b>		Page 1 of 1
Operations Section Chief: <b>Jim Snow, Mike Page(T)</b> Branch Director: <b>John Owings</b> Division/Group Supervisor: <b>Rob Noxon</b>	Night Ops: <b>Mike Koontz, Luis Gomez(T)</b> Deputy Ops: <b>Al Ward, Chris St Pierre(T)</b> Air Attack: <b>Todd White</b>	

5. Resources Assigned:	** Resources Below in Bold are 12 Hour **						
Resource Identifier	ALS	LWD	Leader	Personnel	Request #	Hours	Reporting Location
HC2 BIRRUETA REFORESTATION		10/1	<b>BIRREUTA</b>	20	<b>C-50060</b>	0700-1900	HEAVENLY ICP
HC2 VA INTERAGENCY 01		10/2	<b>FREEMAN</b>	21	<b>C-50063</b>	0700-1900	HEAVENLY ICP
* ENG3 TMU E341		9/29	<b>KING</b>	3	<b>E-50090</b>	0700-1900	HEAVENLY ICP
ENG3 B5121		10/2	<b>BRANDEBURG</b>	2	<b>E-50268</b>	0700-1900	HEAVENLY ICP
ENG3 MT-NWS 1262		9/30	<b>WARD</b>	3	<b>E-50203</b>	0700-1900	HEAVENLY ICP
ENG3 J3 CONTRACTING 1		9/30	<b>WALLACE</b>	3	<b>E-50215</b>	0700-1900	HEAVENLY ICP
ENG4 SUNDANCE FIRE		10/3	<b>TIERNEY</b>	3	<b>E-50283</b>	0700-1900	HEAVENLY ICP
ENG4 J3 CONSTRUCTION		9/24	<b>STEENHUIZEN</b>	3	<b>E-21269</b>	0700-1900	HEAVENLY ICP
ENG5 YABOY		9/28	<b>BAWER</b>	3	<b>E-50178</b>	0700-1900	HEAVENLY ICP
ENG6 E2628		9/30	<b>SPARGO</b>	2	<b>E-50212</b>	0700-1900	HEAVENLY ICP
ENG6 MT-E646		10/4	<b>MCHUGH</b>	3	<b>E-50204</b>	0700-1900	HEAVENLY ICP
FMOD NORTH ZONE FALLERS		10/1	<b>NEALY</b>	2	<b>O-50341</b>	0700-1900	HEAVENLY ICP
FMOD GREEN JR		10/1	<b>GREEN</b>	2	<b>O-50343</b>	0700-1900	HEAVENLY ICP
FMOD A&F ENTERPRISES 2		10/3	<b>JENKINS</b>	2	<b>O-50344</b>	0700-1900	HEAVENLY ICP
SOF2 MOYER		10/3	<b>MOYER</b>	1	<b>O-50306</b>	0700-1900	HEAVENLY ICP
SOFR (T) CABANAS		10/3	<b>CABANAS</b>	1	<b>O-50402</b>	0700-1900	HEAVENLY ICP
EMPF POTTS	X	9/24	<b>POTTS</b>	1	<b>O-20840</b>	0700-1900	HEAVENLY ICP
EMPF SCHELIN	X	9/23	<b>SCHELIN</b>	1	<b>O-20841</b>	0700-1900	HEAVENLY ICP

**6. Work Assignments:**  
 TASK: Provide for a tactical patrol and respond to any calls for service. Coordinate with REAFs and mop up to the extent necessary on the fires edge and within the perimeter where infrastructure and values at risk are present.  
 PUPOSE: Minimize any fire progression, keeping the fire within its current footprint  
 END STATE: Fires edge in the division is controlled and escape is improbable

**7. Special Instructions:**  
 Backhaul trash, excess supplies and provide a location for accountable property  
 Identify and coordinate the removal of hazard trees  
 Resources denoted with \* is identified as I/A resources within the TFR  
 \*\*\*Resources need to report to Heavenly ICP (3860 Saddle Rd., South Lake Tahoe, CA 96150) for briefing and end of shift\*\*\*

8. Communications							
Name	Ch	Function	Rx Freq	Rx Tone	Tx Freq	Tx Tone	Notes
COMMAND SEE ICS 205	1	COMMAND					
NIFC T6	7	TACTICAL	166.7750N		166.7750N		
A/G CMD	14	A/G CMD	167.9500N		167.9500N		
CALCORD	15	COORDINATION	156.0750N	156.7	156.0750N	156.7	
GUARD 16	16	EMERGENCY	168.6250N		168.6250N	110.9	

**9. Prepared by: Name:** Mike Yeun, Chris Adams, Derek Acosta(T)    RESL  
 Signature: 

ICS 204    Date/Time: 9/21/2021 2200    Personnel Count: 76

# ASSIGNMENT LIST (ICS 204 WF)

CONTROLLED UNCLASSIFIED  
INFORMATION/BASIC

<b>1. Incident Name:</b> <p style="text-align: center; font-size: 1.2em;">CALDOR</p>		<b>2. Operational Period:</b> Date From: 09/22/21    Date To: 09/23/21 Time From: 0700    Time To: 0700				<b>3. Branch</b> <b>Division</b> <p style="text-align: center; font-size: 1.5em;">III                      Q</p>	
<b>4. Operations Personnel:</b> Operations Section Chief: <b>Jim Snow, Mike Page(T)</b> Branch Director: <b>John Owings</b> Division/Group Supervisor: <b>Kristian Litz, Andy Wordin(T)</b>		Night Ops: <b>Mike Koontz, Luis Gomez(T)</b> Deputy Ops: <b>Al Ward, Chris St Pierre(T)</b> Air Attack: <b>Todd White</b>				Page 1 of 2 <b>Quebec</b>	
<b>5. Resources Assigned:</b>		<b>** Resources Below in Bold are 12 Hour **</b>					
Resource Identifier	ALS	LWD	Leader	Personnel	Request #	Hours	Reporting Location
HC1 TALLAC IHC		9/22	<b>BETTY</b>	20	C-50001	0700-1900	HEAVENLY ICP
HC2IA TANANA CHIEFS		9/27	<b>SIMPLE</b>	18	C-104	0700-1900	HEAVENLY ICP
HC2IA WHITE MOUNTAIN		9/26	<b>STANSEL</b>	21	C-107	0700-1900	HEAVENLY ICP
HC2IA SAFFORD		9/22	<b>ROMERO</b>	19	C-50016	0700-1900	HEAVENLY ICP
HC2IA SLIDE MOUNTAIN		9/26	<b>HIGGINS</b>	21	C-50049	0700-1900	HEAVENLY ICP
HC2IA ZEPHYR		9/26	<b>FOGARTY</b>	20	C-50050	0700-1900	HEAVENLY ICP
HC2IA TD CREW 21		9/28	<b>ZINK</b>	14	C-50053	0700-1900	HEAVENLY ICP
* HC2IA IRON MOUNTAIN 31		9/30	<b>MCKURTIS</b>	18	C-50062	0700-1900	HEAVENLY ICP
HC2 RIFLE PEAK		9/28	<b>ELLIS</b>	21	C-50054	0700-1900	HEAVENLY ICP
HC2 HVP 51		10/1	<b>RITZMAN</b>	18	C-50058	0700-1900	HEAVENLY ICP
HC2 FRANCO 2		10/3	<b>ALVAREZ</b>	20	C-111	0700-1900	HEAVENLY ICP
* ENG3 TMU E344		10/3	<b>AULD</b>	5	E-50274	0700-1900	HEAVENLY ICP
ENG3 TNF E361		9/26	<b>OKERMAN</b>	5	E-50279	0700-1900	HEAVENLY ICP
ENG3 AZ-CENTRAL 66		10/1	<b>KONTZ</b>	4	E-50269	0700-1900	HEAVENLY ICP
ENG3 AZ-SUM		10/2	<b>GLAZENER</b>	3	E-50270	0700-1900	HEAVENLY ICP
ENG4 EKD		9/22	<b>KRENKA</b>	4	E-50213	0700-1900	HEAVENLY ICP
ENG4 HEART VENTURES 2		10/3	<b>BLACKCROW</b>	3	E-50280	0700-1900	HEAVENLY ICP
ENG4 IDAHO HEATSEEKER		10/3	<b>JOHNSON</b>	3	E-50290	0700-1900	HEAVENLY ICP
ENG6 NBF 661		10/2	<b>JONES</b>	3	E-50222	0700-1900	HEAVENLY ICP
ENG6 ALPINE WILDFIRE		10/1	<b>PINSON</b>	3	E-21103	0700-1900	HEAVENLY ICP
ENG6 PEANUT PIE		10/2	<b>GOOD GUN</b>	3	E-50219	0700-1900	HEAVENLY ICP
ENG6 OC FORESTRY		10/4	<b>ABEL</b>	3	E-50293	0700-1900	HEAVENLY ICP
<b>6. Work Assignments:</b> TASK: Actively suppress any fire near Buck Pasture. Prep dozer line for potential firing operation along Schneider Camp 4x4 Rd. Mop up to the extent necessary, utilizing natural barriers and secure any heat sources between DP-65 and Scout Peak PURPOSE: Minimize any fire progression and ensure the safety of those working within the division END STATE: Fires edge in the division is controlled and escape is improbable							
<b>7. Special Instructions:</b> Backhaul trash, excess supplies and provide a location for accountable property Identify and coordinate the removal of hazard trees Resources denoted with * is identified as I/A resources within the TFR ***Resources need to report to Heavenly ICP (3860 Saddle Rd., South Lake Tahoe, CA 96150) for briefing and end of shift***							
<b>8. Communications</b>							
Name	Ch	Function	Rx Freq	Rx Tone	Tx Freq	Tx Tone	Notes
COMMAND SEE ICS 205	1	COMMAND					
NIFC T3	8	TACTICAL	168.6000N		168.6000N		
A/G CMD	14	A/G CMD	167.9500N		167.9500N		
CALCORD	15	COORDINATION	156.0750N	156.7	156.0750N	156.7	
GUARD 16	16	EMERGENCY	168.6250N		168.6250N	110.9	
<b>9. Prepared by: Name:</b>		Mike Yeun, Chris Adams, Derek Acosta(T)		RESL		Signature:	
ICS 204		Date/Time: 9/21/2021 2200		Personnel Count: 237			

# ASSIGNMENT LIST (ICS 204 WF)

CONTROLLED UNCLASSIFIED  
INFORMATION/BASIC

<b>1. Incident Name:</b> <p style="text-align: center;"><b>CALDOR</b></p>	<b>2. Operational Period:</b> Date From: 09/22/21    Date To: 09/23/21 Time From: 0700            Time To: 0700	<b>3. Branch</b> <b>Division</b> <p style="text-align: center;"><b>III</b>                                      <b>Q</b></p>
--	---	---

<b>4. Operations Personnel:</b> Operations Section Chief: <b>Jim Snow, Mike Page(T)</b> Branch Director: <b>John Owings</b> Division/Group Supervisor: <b>Kristian Litz, Andy WordIn(T)</b>	Night Ops: <b>Mike Koontz, Luis Gomez(T)</b> Deputy Ops <b>Al Ward, Chris St Pierre(T)</b> Air Attack: <b>Todd White</b>
--	--

<b>5. Resources Assigned:</b>	<b>** Resources Below in Bold are 12 Hour **</b>						
Resource Identifier	ALS	LWD	Leader	Personnel	Request #	Hours	Reporting Location
WTT2 CGS INC		10/19	<b>CORELY</b>	1	E-20280	0700-1900	HEAVENLY ICP
WTS2 OXFORD		9/25	<b>CLARK</b>	1	E-257	0700-1900	HEAVENLY ICP
WTS2 HOME STYLE WATER		10/4	<b>CASTILLO</b>	1	E-50288	0700-1900	HEAVENLY ICP
WTS3 MOAPA VALLEY FD		10/2	<b>WITTER</b>	1	E-50245	0700-1900	HEAVENLY ICP
WTS3 AZ-PTP		10/2	<b>FINCH</b>	2	E-50242	0700-1900	HEAVENLY ICP
DO22 2C LAND AND TIMBER		9/30	<b>CARRIOOO</b>	2	E-50234	0700-1900	HEAVENLY ICP
DO23 DEUCES TRUCKING		9/30	<b>JOHNSON</b>	3	E-50238	0700-1900	HEAVENLY ICP
SKD BULL CREEK		10/4	<b>CAHOON</b>	2	E-65	0700-1900	HEAVENLY ICP
FMOD UNDERDOG TIMBER 1		9/23	<b>BROWN</b>	2	O-232	0700-1900	HEAVENLY ICP
TFLD MACARTHUR		9/24	<b>MACARTHUR</b>	1	O-224	0700-1900	HEAVENLY ICP
TFLD BROOKS		10/5	<b>BROOKS</b>	1	O-50484	0700-1900	HEAVENLY ICP
TFLD(T) SHEPHERD		9/24	<b>SHEPHERD</b>	1	O-50012	0700-1900	HEAVENLY ICP
RAT1 (REMS)	X	10/4	<b>HOOVER/PATTEN</b>	2	E-50097	0700-1900	HEAVENLY ICP
EMPF GHISLETTA	X	9/30	<b>GHISLETTA</b>	1	O-50313	0700-1900	HEAVENLY ICP
EMPF DEYOUNG	X	10/3	<b>DEYOUNG</b>	1	O-50407	0700-1900	HEAVENLY ICP
EMPF FLORES (UTV)	X	10/4	<b>FLORES</b>	1	E-50176	0700-1900	HEAVENLY ICP
EMTF WIDICK (UTV)		10/4	<b>WIDICK</b>	1	E-50176	0700-1900	HEAVENLY ICP

**6. Work Assignments:**  
 TASK: Actively suppress any fire near Buck Pasture. Prep dozer line for potential firing operation along Schneider Camp 4x4 Rd. Mop up to the extent necessary, utilizing natural barriers and secure any heat sources between DP-65 and Scout Peak  
 PURPOSE: Minimize any fire progression and ensure the safety of those working within the division  
 END STATE: Fires edge in the division is controlled and escape is improbable

**7. Special Instructions:**  
 Backhaul trash, excess supplies and provide a location for accountable property  
 Identify and coordinate the removal of hazard trees  
 Resources denoted with \* is identified as I/A resources within the TFR  
 \*\*\*Resources need to report to Heavenly ICP (3860 Saddle Rd., South Lake Tahoe, CA 96150) for briefing and end of shift\*\*\*

**8. Communications**

Name	Ch	Function	Rx Freq	Rx Tone	Tx Freq	Tx Tone	Notes
COMMAND SEE ICS 205	1	COMMAND					
NIFC T3	8	TACTICAL	168.6000N		168.6000N		
A/G CMD	14	A/G CMD	167.9500N		167.9500N		
CALCORD	15	COORDINATION	156.0750N	156.7	156.0750N	156.7	
GUARD 16	16	EMERGENCY	168.6250N		168.6250N	110.9	

**9. Prepared by: Name:** Mike Yeun, Chris Adams, Derek Acosta(T)                      RESL  
 Signature:

**ICS 204**                      Date/Time: 9/21/2021 2200                      Personnel Count: 24



# ASSIGNMENT LIST (ICS 204 WF)

CONTROLLED UNCLASSIFIED  
INFORMATION/BASIC

<b>1. Incident Name:</b>	<b>2. Operational Period:</b>	<b>3. Branch</b>	<b>Division</b>
<b>CALDOR</b>	Date From: 09/22/21    Date To: 09/23/21 Time From: 0700    Time To: 0700	<b>III</b>	<b>R</b>

<b>4. Operations Personnel:</b>		Page 1 of 1	Romeo
Operations Section Chief: <b>Jim Snow, Mike Page(T)</b> Branch Director: <b>John Owings</b> Division/Group Supervisor: <b>Aaron Schumacher, Garth Crow</b>		Night Ops: <b>Mike Koontz, Luis Gomez(T)</b> Deputy Ops: <b>Al Ward, Chris St Pierre(T)</b> Air Attack: <b>Todd White</b>	


5. Resources Assigned:		** Resources Below In Bold are 12 Hour **					
Resource Identifier	ALS	LWD	Leader	Personnel	Request #	Hours	Reporting Location
HC2 FIRESTORM		<b>10/2</b>	<b>LOPEZ</b>	20	<b>C-108</b>	<b>0700-1900</b>	<b>HEAVENLY ICP</b>
ENG3 CCD 3324		<b>10/1</b>	<b>VANDERSLICE</b>	4	<b>E-50195</b>	<b>0700-1900</b>	<b>HEAVENLY ICP</b>
ENG3 J3 CONTRACTING 2		<b>9/25</b>	<b>MCANDREW</b>	3	<b>E-50294</b>	<b>0700-1900</b>	<b>HEAVENLY ICP</b>
ENG4 COOPER CONTRACTING		<b>10/1</b>	<b>BURWELL</b>	3	<b>E-50223</b>	<b>0700-1900</b>	<b>HEAVENLY ICP</b>
ENG 4 BOSKET'S PLUMBING		<b>9/30</b>	<b>BAILEY</b>	3	<b>E-50202</b>	<b>0700-1900</b>	<b>HEAVENLY ICP</b>
ENG4 PACIFIC OASIS		<b>10/3</b>	<b>WILSON</b>	3	<b>E-50285</b>	<b>0700-1900</b>	<b>HEAVENLY ICP</b>
ENG6 INDIANOLA		<b>9/29</b>	<b>ALLSOP</b>	3	<b>E-50198</b>	<b>0700-1900</b>	<b>HEAVENLY ICP</b>
ENG6 N4S		<b>9/29</b>	<b>NAEGELE</b>	2	<b>E-50265</b>	<b>0700-1900</b>	<b>HEAVENLY ICP</b>
ENG6 BKF 664		<b>9/29</b>	<b>WOLFF</b>	3	<b>E-50201</b>	<b>0700-1900</b>	<b>HEAVENLY ICP</b>
ENG6 OREGON WOODS INC		<b>10/1</b>	<b>PARKINS</b>	3	<b>E-50210</b>	<b>0700-1900</b>	<b>HEAVENLY ICP</b>
ENG6 ALLEN FIRE LLC		<b>10/1</b>	<b>ALLEN</b>	3	<b>E-50218</b>	<b>0700-1900</b>	<b>HEAVENLY ICP</b>
ENG6 TIMBER RIDGE		<b>10/3</b>	<b>TODD</b>	3	<b>E-50284</b>	<b>0700-1900</b>	<b>HEAVENLY ICP</b>
ENG6 GRIZ ONE		<b>10/3</b>	<b>TABER</b>	3	<b>E-50286</b>	<b>0700-1900</b>	<b>HEAVENLY ICP</b>
ENG6 FIRST STRIKE		<b>10/3</b>	<b>FOOTE</b>	3	<b>E-50278</b>	<b>0700-1900</b>	<b>HEAVENLY ICP</b>
WTS2 IDAHO HEAVY EQUIP		<b>9/27</b>	<b>HOLLIDAY</b>	2	<b>E-387</b>	<b>0700-1900</b>	<b>HEAVENLY ICP</b>
WTS2 DAHL & SONS		<b>10/4</b>	<b>DAHL</b>	1	<b>E-20019</b>	<b>0700-1900</b>	<b>HEAVENLY ICP</b>
DO22 BUFFINGTON		<b>10/17</b>	<b>BENSON</b>	2	<b>E-20022</b>	<b>0700-1900</b>	<b>HEAVENLY ICP</b>
SOFR TADLOCK		<b>9/22</b>	<b>TADLOCK</b>	1	<b>O-50169</b>	<b>0700-1900</b>	<b>HEAVENLY ICP</b>
EMPF ESTRADA	X	<b>9/23</b>	<b>ESTRADA</b>	1	<b>O-50220</b>	<b>0700-1900</b>	<b>HEAVENLY ICP</b>
EMTF PRADO		<b>9/24</b>	<b>PRADO</b>	1	<b>O-50111</b>	<b>0700-1900</b>	<b>HEAVENLY ICP</b>

**6. Work Assignments:**  
 TASK: Secure existing line and utilize natural barriers as control lines. Mop up to the extent necessary near Kirkwood Lake and secure any heat sources south of Hwy 88  
 PURPOSE: Minimize any fire progression and ensure the safety of those working near Hwy 88  
 END STATE: Fires edge in the division in controlled and escape is improbable

**7. Special Instructions:**  
 Backhaul trash, excess supplies and provide a location for accountable property  
 Identify and coordinate the removal of hazard trees  
 Resources denoted with \* is identified as I/A resources within the TFR  
 \*\*\*Resources need to report to Heavenly ICP (3860 Saddle Rd., South Lake Tahoe, CA 96150) for briefing and end of shift\*\*\*

**8. Communications**

Name	Ch	Function	Rx Freq	Rx Tone	Tx Freq	Tx Tone	Notes
COMMAND SEE ICS 205	1	COMMAND					
NIFC T7	9	TACTICAL	168.2500N		168.2500N		
A/G CMD	14	A/G CMD	167.9500N		167.9500N		
CALCORD	15	COORDINATION	156.0750N	156.7	156.0750N	156.7	
GUARD 16	16	EMERGENCY	168.6250N		168.6250N	110.9	

**9. Prepared by: Name:** Mike Yeun, Chris Adams, Derek Acosta(T)    RESL  
 Signature: 

ICS 204    Date/Time: 9/21/2021 2200    Personnel Count: 65

# ASSIGNMENT LIST (ICS 204 WF)

CONTROLLED UNCLASSIFIED  
INFORMATION/BASIC

<b>1. Incident Name:</b> <p style="text-align: center;"><b>CALDOR</b></p>	<b>2. Operational Period:</b> Date From: 09/22/21    Date To: 09/23/21 Time From: 0700    Time To: 0700	<b>3. Branch</b> <b>Division</b> <p style="text-align: center;"><b>III    Suppression Repair</b></p>
--	---	---

Page 1 of 2

<b>4. Operations Personnel:</b> Operations Section Chief: <b>Jim Snow, Mike Page(T)</b> Branch Director: <b>John Owings</b> Division/Group Supervisor: <b>Rob Bertolina</b>	Night Ops: <b>Mike Koontz, Luis Gomez(T)</b> Deputy Ops: <b>Al Ward, Chris St Pierre(T)</b> Air Attack: <b>Todd White</b>
--	---

5. Resources Assigned:	** Resources Below In Bold are 12 Hour **							
Resource Identifier	ALS	LWD	Leader	Personnel	Request #	Hours	Reporting Location	
HC2 R&R CONTRACTING		9/25	<b>IBARRA</b>	20	<b>C-50041</b>	0700-1900	HEAVENLY ICP	
HC2 GRIZZLY FIREFIGHTERS		9/25	<b>FONSECA</b>	20	<b>C-50042</b>	0700-1900	HEAVENLY ICP	
HC2 MS REGULAR 1		9/27	<b>GLADNEY</b>	22	<b>C-50047</b>	0700-1900	HEAVENLY ICP	
HC2 COOPER CONTRACTING		9/26	<b>GRIMALDO</b>	20	<b>C-50048</b>	0700-1900	HEAVENLY ICP	
HC2 PACIFIC COAST		10/2	<b>CISNEROS</b>	20	<b>C-50003</b>	0700-1900	HEAVENLY ICP	
UTIL CRAIG		9/25	<b>CRAIG</b>	3	<b>E-50165</b>	0700-1900	HEAVENLY ICP	
WTS1 LOVATO		10/3	<b>LOVATO</b>	1	<b>E-50248</b>	0700-1900	HEAVENLY ICP	
WTT2 QUALITY CONST		10/1	<b>INDIHOR</b>	1	<b>E-20008</b>	0700-1900	HEAVENLY ICP	
WTS2 ABLE SERVICES		10/2	<b>DREW</b>	1	<b>E-50240</b>	0700-1900	HEAVENLY ICP	
WTT2 AC WATER		10/19	<b>ROSE</b>	1	<b>E-20017</b>	0700-1900	HEAVENLY ICP	
WTS3 KLEINWORTH		10/2	<b>KLEINWORTH</b>	1	<b>E-50247</b>	0700-1900	HEAVENLY ICP	
WTS3 US RANCH		10/2	<b>SALAZAR</b>	1	<b>E-50246</b>	0700-1900	HEAVENLY ICP	
EXCA JW MORRISON		9/30	<b>DALE</b>	1	<b>E-50229</b>	0700-1900	HEAVENLY ICP	
EXCA STOX 72		9/22	<b>LICATA</b>	2	<b>E-686</b>	0700-1900	HEAVENLY ICP	
EXCA MC EXCAVATION		10/3	<b>STANHUPE</b>	2	<b>E-235</b>	0700-1900	HEAVENLY ICP	
EXCA DAVIS CORP		9/22	<b>PARKER</b>	2	<b>E-688</b>	0700-1900	HEAVENLY ICP	
EXCA HACKER MACHINES		10/1	<b>ARCE</b>	2	<b>E-50233</b>	0700-1900	HEAVENLY ICP	
EXCA PRO INC		10/2	<b>ROE</b>	2	<b>E-50261</b>	0700-1900	HEAVENLY ICP	
EXCA BALDWIN DIESEL		10/2	<b>MILLER</b>	2	<b>E-50232</b>	0700-1900	HEAVENLY ICP	
EXCA SERMON		10/2	<b>SERMON</b>	2	<b>E-50260</b>	0700-1900	HEAVENLY ICP	
EXCA WESTERN MT EXCA		10/4	<b>BUGLI</b>	2	<b>E-50264</b>	0700-1900	HEAVENLY ICP	

**6. Work Assignments:**  
 TASK: Perform priority suppression repair work within Branch 3. Coordinate closely with CALFIRE AEU and USFS REAFs, focusing efforts in Angora Meadow, Old Meyers Grade, Tahoe Mtn and Cold Creek  
 PURPOSE: Minimize any near-term environmental resource impacts as a result of fire suppression efforts  
 END STATE: Watershed and areas adjacent to values at risk are protected using the approved standard

**7. Special Instructions:**  
 Backhaul trash, excess supplies and provide a location for accountable property  
 Identify and coordinate the removal of hazard trees  
 Resources denoted with \* is identified as I/A resources within the TFR  
 \*\*\*Resources need to report to Heavenly ICP (3860 Saddle Rd., South Lake Tahoe, CA 96150) for briefing and end of shift\*\*\*

8. Communications							
Name	Ch	Function	Rx Freq	Rx Tone	Tx Freq	Tx Tone	Notes
COMMAND SEE ICS 205	1	COMMAND					
VFIRE 24	10	TACTICAL	154.272N		154.2725N		
A/G CMD	14	A/G CMD	167.9500N		167.9500N		
CALCORD	15	COORDINATION	156.0750N	156.7	156.0750N	156.7	
GUARD 16	16	EMERGENCY	168.6250N		168.6250N	110.9	

**9. Prepared by: Name:** Mike Yeun, Chris Adams, Derek Acosta(T)    RESL  
 Signature:

ICS 204    Date/Time: 9/21/2021 2200    Personnel Count: 122

# ASSIGNMENT LIST (ICS 204 WF)

CONTROLLED UNCLASSIFIED  
INFORMATION/BASIC

<b>1. Incident Name:</b> <p style="text-align: center;"><b>CALDOR</b></p>	<b>2. Operational Period:</b> Date From: 09/22/21    Date To: 09/23/21 Time From: 0700    Time To: 0700	<b>3. Branch</b> <b>Division</b> <p style="text-align: center;"><b>III    Suppression Repair</b></p>
--	---	---

Page 2 of 2

<b>4. Operations Personnel:</b> Operations Section Chief: <b>Jim Snow, Mike Page(T)</b> Branch Director: <b>John Owings</b> Division/Group Supervisor: <b>Rob Bertolna</b>	Night Ops: <b>Mike Koontz, Luis Gomez(T)</b> Deputy Ops: <b>Al Ward, Chris St Pierre(T)</b> Air Attack: <b>Todd White</b>
---	---

5. Resources Assigned:	** Resources Below in Bold are 12 Hour **							
Resource Identifier	ALS	LWD	Leader	Personnel	Request #	Hours	Reporting Location	
GRD JDB3		9/27	<b>WERRY</b>	2	E-50147	0700-1900	HEAVENLY ICP	
GRD MILLSAPS		9/24	<b>HANSEN</b>	2	E-50148	0700-1900	HEAVENLY ICP	
CHIP MCKELLAR TREE SERV		9/28	<b>AYALA</b>	3	E-50134	0700-1900	HEAVENLY ICP	
CHIP SISKIYOU TREES		9/30	<b>LANGE</b>	3	E-50136	0700-1900	HEAVENLY ICP	
MAST JANC		10/1	<b>JANC</b>	2	E-50251	0700-1900	HEAVENLY ICP	
MAST PERRAULT		10/1	<b>DECUIR</b>	2	E-50250	0700-1900	HEAVENLY ICP	
FMOD REDWOOD EMPIRE		10/2	<b>GONZALEZ</b>	2	O-50342	0700-1900	HEAVENLY ICP	
TFLD NELSON			<b>NOT CHECKED IN</b>	1	O-50334	0700-1900	HEAVENLY ICP	
HEQB SEWELL		9/24	<b>SEWELL</b>	1	O-50178	0700-1900	HEAVENLY ICP	
HEQB(T) LOZANO		9/24	<b>LOZANO</b>	1	O-50011	0700-1900	HEAVENLY ICP	
HEQB(T) QUINN		10/4	<b>QUINN</b>	1	O-50497	0700-1900	HEAVENLY ICP	
REAF VAN SANT		9/29	<b>VAN SANT</b>	1	O-574	0700-1900	HEAVENLY ICP	
REAF KRAJA		10/1	<b>KARJA</b>	1	O-50388	0700-1900	HEAVENLY ICP	
REAF(T) HENDERSON			<b>HENDERSON</b>	1		0700-1900	HEAVENLY ICP	
THSP GUSSES			<b>GUSSES</b>	1	O-526	0700-1900	HEAVENLY ICP	

**6. Work Assignments:**  
 TASK: Perform priority suppression repair work within Branch 3. Coordinate closely with CALFIRE AEU and USFS REAFs, focusing efforts in Angora Meadow, Old Meyers Grade, Tahoe Mtn and Cold Creek  
 PURPOSE: Minimize any near-term environmental resource impacts as a result of fire suppression efforts  
 END STATE: Watershed and areas adjacent to values at risk are protected using the approved standard

**7. Special Instructions:**  
 Backhaul trash, excess supplies and provide a location for accountable property  
 Identify and coordinate the removal of hazard trees  
 Resources denoted with \* is identified as I/A resources within the TFR  
 \*\*\*Resources need to report to Heavenly ICP (3860 Saddle Rd., South Lake Tahoe, CA 96150) for briefing and end of shift\*\*\*

**8. Communications**

Name	Ch	Function	Rx Freq	Rx Tone	Tx Freq	Tx Tone	Notes
COMMAND SEE ICS 205	1	COMMAND					
VFIRE 24	10	TACTICAL	154.272N		154.2725N		
A/G CMD	14	A/G CMD	167.9500N		167.9500N		
CALCORD	15	COORDINATION	156.0750N	156.7	156.0750N	156.7	
GUARD 16	16	EMERGENCY	168.6250N		168.6250N	110.9	

**9. Prepared by: Name:** Mike Yeun, Chris Adams, Derek Acosta(T)    RESL  
 Signature:

ICS 204    Date/Time: 9/21/2021 2200    Personnel Count: 24

# ASSIGNMENT LIST (ICS 204 WF)

CONTROLLED UNCLASSIFIED  
INFORMATION//BASIC

<b>1. Incident Name:</b> <b>CALDOR</b>	<b>2. Operational Period:</b> Date From: 09/22/21    Date To: 09/23/21 Time From: 0700        Time To: 0700	<b>3. Branch</b> <b>Division</b>  <b>Night</b> <b>Night</b>
---	---	---

Page 1 of 1

<b>4. Operations Personnel:</b> Operations Section Chief: <b>Jim Snow, Mike Page(T)</b> Branch Director: <b>TBD</b> Division/Group Supervisor: <b>TBD</b>		Night Ops: <b>Mike Koontz, Luis Gomez(T)</b> Deputy Ops <b>Al Ward, Chris St Pierre(T)</b> Air Attack: <b>Todd White</b>
--	--	--

<b>5. Resources Assigned:</b>		<b>** Resources Below in Bold are 12 Hour **</b>					
Resource Identifier	ALS	LWD	Leader	Personnel	Request #	Hours	Reporting Location
ENG4 WY CAMPPELL BRUSH 2		9/29	<b>BURTON</b>	3	<b>E-50221</b>	<b>1900-0700</b>	<b>HEAVENLY ICP</b>
ENG4 NV-HTF E461		9/22	<b>ZAHRT</b>	3	<b>E-50211</b>	<b>1900-0700</b>	<b>HEAVENLY ICP</b>
ENG4 PVT E411		9/29	<b>MARTIN</b>	3	<b>E-50197</b>	<b>1900-0700</b>	<b>HEAVENLY ICP</b>
ENG6 MT-KNF 651		9/29	<b>BERGET</b>	8	<b>E-50194</b>	<b>1900-0700</b>	<b>HEAVENLY ICP</b>
ENG6 R04 311		9/29	<b>TURNER</b>	3	<b>E-50200</b>	<b>1900-0700</b>	<b>HEAVENLY ICP</b>
ENG6 BELLEVUE		9/30	<b>ARENAS</b>	2	<b>E-50214</b>	<b>1900-0700</b>	<b>HEAVENLY ICP</b>
ENG6 BLM AZ E3664		9/29	<b>HINDMAN</b>	7	<b>E-50216</b>	<b>1900-0700</b>	<b>HEAVENLY ICP</b>
ENG6 AZ-PNF E952		9/29	<b>BADGER</b>	7	<b>E-50217</b>	<b>1900-0700</b>	<b>HEAVENLY ICP</b>
STEN(T) WHITE		9/29	<b>WHITE</b>	1	<b>E-50221.1</b>	<b>1900-0700</b>	<b>HEAVENLY ICP</b>
TFLD CORSER		10/5	<b>CORSER</b>	1	<b>O-50443</b>	<b>1900-0700</b>	<b>HEAVENLY ICP</b>
MEDIC 2	X	9/29	<b>ANDERSON/CASTRO</b>	2	<b>E-20593</b>	<b>1900-0700</b>	<b>HEAVENLY ICP</b>

**6. Work Assignments:**  
 TASK: Engage in perimeter control efforts north of Caples Lake to Scout Peak, perform tactical patrol, respond to service calls and mitigate any isolated heat sources within the fire perimeter where safe to do so  
 PURPOSE: Minimize any fire progression, keeping the fire within its current footprint  
 END STATE: Fires edge is controlled and escape is improbable

**7. Special Instructions:**  
 Resources denoted with \* is identified as I/A resources within the TFR  
 \*\*\*Resources need to report to Heavenly ICP (3860 Saddle Rd., South Lake Tahoe, CA 96150) for briefing and end of shift\*\*\*

<b>8. Communications</b>							
Name	Ch	Function	Rx Freq	Rx Tone	Tx Freq	Tx Tone	Notes
COMMAND SEE ICS 205	1	COMMAND					
VFIRE 25	11	TACTICAL	154.2875N	156.7	154.2875N	156.7	
A/G CMD	14	A/G CMD	167.9500N		167.9500N		
CALCORD	15	COORDINATION	156.0750N	156.7	156.0750N	156.7	
GUARD 16	16	EMERGENCY	168.6250N		168.6250N	110.9	

**9. Prepared by: Name:** Mike Yeun, Chris Adams, Derek Acosta(T)                      RESL                      Signature:

ICS 204                      Date/Time: 9/21/2021    2200                      Personnel Count: 40

# ICS 205 - INCIDENT RADIO COMMUNICATIONS PLAN

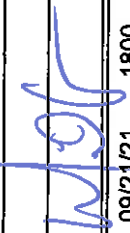
CONTROLLED UNCLASSIFIED  
INFORMATION/BASIC

<b>1. Incident Name:</b> CALDOR EAST Z3	<b>2. Date/Time Prepared</b> Date: 09/21/2021 Time: 1800	<b>3. Operational Period:</b> Date To: 09/23/21 Time To: 0700
---	--	---

4. Communications									
Ch#	Function	Name	Assigned To	Rx Freq	Rx Tone	Tx Freq	Tx Tone	Notes	
1	COMMAND	CMD 5	EAST BRANCHES	169.7500N	146.2	167.1000N	146.2	MONUMENT PK LINKED W/ C67, C93, C96	
2	COMMAND	CMD 93	EAST BRANCHES	166.6875N	146.2	162.9375N	146.2	SCOUT LINKED W/C5, C67, C96	
3	COMMAND	CMD 67	EAST BRANCHES	172.0750N	146.2	162.2000N	146.2	KIRKWOOD MT, LINKED W/C5, C93, C96	
4	COMMAND	CMD 96	EAST BRANCHES	169.9625N	146.2	165.0500N	146.2	PYRAMID PEAK LINKED W/C5, C93, C67	
5	COMMAND	CMD 56	WEST BRANCHES	172.3500N	114.8	163.0375N	114.8	MONUMENT PK LINK TO WEST	
6	TACTICAL	NIFC T1	DIV I/M	168.0500N		168.0500N			
7	TACTICAL	NIFC T6	DIV O/P	166.7750N		166.7750N			
8	TACTICAL	NIFC T3	DIV Q	168.6000N		168.6000N			
9	TACTICAL	NIFC T7	DIV R	168.2500N		168.2500N			
10	TACTICAL	VFIRE 24	FIRE SUPP, REPAIR	154.2725N	156.7	154.2725N	156.7		
11	TACTICAL	VFIRE 25	NIGHT OPS	154.2875N	156.7	154.2875N	156.7		
12	A/G CMD	A/G CMD	ALL BRANCHES	167.9500N		167.9500N			
13	A/G TAC	A/G TAC	A/G BUCKETS	166.6125N		166.6125N			
14	A/G TAC	A/G TAC2	A/G LOGS	169.2875N		169.2875N			
15	COORDINATION	CALCORD	ALL BRANCHES	156.0750N	156.7	156.0750N	156.7	MEDICAL COORDINATION	
16	EMERGENCY	GUARD 16	ALL BRANCHES	168.6250N		168.6250N	110.9	EMERGENCY USE ONLY	
17									
18									
19									
20	EMERGENCY	GUARD 16	ALL BRANCHES	168.6250N		168.6250N	110.9	EMERGENCY USE ONLY	

**EAST COMMUNICATION 208-850-8987**

**6. Prepared by: Name: MIKE GREENE COML**

Signature:  Date/Time: 09/21/21 1800

# ICS 205 - INCIDENT RADIO COMMUNICATIONS PLAN

CONTROLLED UNCLASSIFIED  
INFORMATION//BASIC

<b>1. Incident Name:</b> CALDOR WEST Z1	<b>2. Date/Time Prepared</b> Date: 09/21/2021 Time: 1800	<b>3. Operational Period:</b> Date To: 09/23/21 Time To: 0700
---	--	---

4. Communications									
Ch#	Function	Name	Assigned To	Rx Freq	Rx Tone	Tx Freq	Tx Tone	Notes	
1	COMMAND	CMD 109	WEST BRANCHES	170.3875N	114.8	162.1750N	114.8	BIG HILL	
2	COMMAND	CMD 104	WEST BRANCHES	170.7625N	114.8	165.6250N	114.8	NORTH OF HWY 50 BETWEEN DP 21 AND DP 24	
3	COMMAND	CMD 1	WEST BRANCHES	170.9750N	114.8	168.7000N	114.8	LEEK SPRINGS	
4	COMMAND	CMD 11	WEST BRANCHES	170.6875N	114.8	166.575N	114.8	GRIZZLY FLATS AREA	
5	COMMAND	CMD 113	WEST BRANCHES	170.3125N	114.8	165.6750N	114.8	KIRKWOOD MOUNTAIN	
6	COMMAND	CMD 116	WEST BRANCHES	171.0375N	114.8	162.5875N	114.8	SIERRA SKI RESORT	
7	TACTICAL	VTAC 13		158.7375N	156.7	158.7375N	156.7		
8	TACTICAL	NIFC T1	DIV G/TW	168.0500N		168.0500N			
9	TACTICAL	NIFC T6	FIRE SUPP.REPAIR	166.7750N		166.7750N			
10	TACTICAL	NIFC T3		168.6000N		168.6000N			
11	TACTICAL	NIFC T7		168.2500N		168.2500N			
12	A/G CMD	A/G CMD	ALL BRANCHES	167.9500N		167.9500N		AIR TO GROUND	
13	A/G TAC	A/G TAC	A/G BUCKETS	166.6125N		166.6125N			
14	A/G TAC	A/G TAC2	A/G LOGS	169.2875N		169.2875N			
15	MEDICAL	CALCORD	ALL BRANCHES	156.0750N	156.7	156.0750N	156.7	EMS COORDINATION ONLY	
16	EMERGENCY	GUARD 16	ALL BRANCHES	168.6250N		168.6250N	110.9	EMERGENCY USE ONLY	
17									
18									
19									
20	EMERGENCY	GUARD 16	ALL BRANCHES	168.6250N		168.6250N	110.9	EMERGENCY USE ONLY	

**5. Special Instructions**  
 CALDOR COMMUNICATION ICP HEAVENLY 208-850-8987

<b>6. Prepared by (Communications Unit Leader):</b> Name: MIKE GREENE COML	Signature: 
ICS 205 - CONTROLLED UNCLASSIFIED INFORMATION//BASIC	Date/Time: 09/21/2021 1800

# ICS 205 - INCIDENT RADIO COMMUNICATIONS PLAN

CONTROLLED UNCLASSIFIED  
INFORMATION//BASIC

<b>1. Incident Name:</b> TAHOE BASIN I/A	<b>2. Date/Time Prepared</b> Date: 09/21/21 Time: 1800	<b>3. Operational Period:</b> Date To: 09/23/21 Time To: 0700
---	--	---

4. Communications									
Ch#	Function	Name	Assigned To	Rx Freq	Rx Tone	Tx Freq	Tx Tone	Notes	
1	FOREST NET	ENF T9	ALL DIVS	171.5250N	156.7	162.7500N	T9-100.0	HAWKINS PK	
2	FOREST NET	TMU T2	ALL DIVS	172.3750N	156.7	164.9625N	T2-123.0	EAST PK	
3	FOREST NET	HTF T3	ALL DIVS	173.7750		165.7500N	T3-131.8	HAWKINS PK	
4	TACTICAL	NIFC T1	ALL DIVS	168.0500N		168.0500N			
5	TACTICAL	NIFC T2	ALL DIVS	168.200N		168.200N			
6	TACTICAL	R5T4	ALL DIVS	166.5500N		166.5500N			
7	TACTICAL	R5T5	ALL DIVS	167.1125N		167.1125N			
8	TACTICAL	VFIRE22	ALL DIVS	154.2650N	156.7	154.2650N	156.7		
9	TACTICAL	VFIRE23	ALL DIVS	154.2950N	156.7	154.2950N	156.7		
10	TACTICAL	VFIRE 26	ALL DIVS	154.3025N	156.7	154.3025N	156.7		
11	TACTICAL	CCD SOA	ALL DIVS	171.6750N		171.6750N		AKA* BLM SOA*	
12	TACTICAL	NDF RED 1	ALL DIVS	159.3450N		159.3450N			
13	AIR TO GROUND	A/G 14	ALL DIVS	167.5000N		167.5000N		I/A/G-ENF/TMU	
14	AIR TO GROUND	A/G 51	ALL DIVS	168.3125N		168.3125N		I/A/G-SIERRA FRONT	
15	MEDICAL	CALCORD	ALL DIVS	156.0750N	156.7	156.0750N	156.7	MEDICAL COORDINATION	
16	EMERGENCY	GUARD	EMERGENCY	168.6250N		168.6250N	110.9	EMERGENCY CONTACT	
17									
18									
19									
20	EMERGENCY	GUARD	EMERGENCY	168.6250N		168.6250N	110.9	EMERGENCY CONTACT	

**5. Special Instructions**

<b>6. Prepared by (Communications Unit Leader):</b> Name: MIKE GREENE	Signature: 
ICS 205 - CONTROLLED UNCLASSIFIED INFORMATION//BASIC	NIMS IAP Date/Time: 09/21/21 1800


# ICS 205 - INCIDENT RADIO COMMUNICATIONS PLAN

CONTROLLED UNCLASSIFIED  
INFORMATION//BASIC

<b>1. Incident Name:</b> ENF/AEU INITIAL ATTACK ONLY	<b>2. Date/Time Prepared</b> Date: 09/21/2021 Time: 1800	<b>3. Operational Period:</b> Date From: 09/22/21 Date To: 09/23/21 Time From: 0700 Time To: 0700
---	--	---

4. Communications									
Ch#	Function	Name	Assigned To	Rx Freq	Rx Tone	Tx Freq	Tx Tone	Notes	
1	COMMAND	ENFADM 1		172.3250N	156.7	165.2250N	110.9	FOREST ADMIN Tone 1-Alder	
2	COMMAND	ENFADM 2		172.3250N	156.7	165.2250N	123.0	FOREST ADMIN Tone 2-Leek Springs	
3	COMMAND	ENFADM 4		172.3250N	156.7	165.2250N	136.5	FOREST ADMIN Tone 4-Big Hill	
4	COMMAND	ENFADM 6		172.3250N	156.7	165.2250N	156.7	FOREST ADMIN Tone 6-Echo Summit	
5	COMMAND	XAM CT10		154.7625N	123.0	159.1800N	107.2	AMADOR CMD Tone 10-Leek Springs	
6	COMMAND	XAM CT11		154.7625N	123.0	159.1800N	114.8	AMADOR CMD Tone 11-Zion Mountain	
7	COMMAND	XED CT11		155.9025N	186.2	159.2775N	114.8	EL DORADO CMD Tone 11-Union	
8	COMMAND	XED CT1		155.9025N	186.2	159.2775N	110.9	EL DORADO CMD Tone 1-Alder	
9	COMMAND	XED CT4		155.9025N	186.2	159.2775N	136.5	EL DORADO CMD Tone 4-Big Hill	
10	TACTICAL	R5 T4		166.5500N		166.5500N		REGION 5 TAC 4	
11	TACTICAL	R5 T5		167.1125N		167.1125N		REGION 5 TAC 5	
12	TACTICAL	R5 T6		168.2375N		168.2375N		REGION 5 TAC 6	
13	TACTICAL	CDF T2		151.1600N	192.8	151.1600N	192.8		
14	TACTICAL	CDF T8		151.3700N	192.8	151.3700N	192.8		
15	AIR TO GROUND	A/G TAC	AIR TO GROUND	164.1375N		164.1375N			
16	EMERGENCY	GUARD 8	EMERGENCY	168.6250N		168.6250N	110.9		
17									
18									
19									
20	EMERGENCY	GUARD 8	EMERGENCY	168.6250N		168.6250N	110.9		

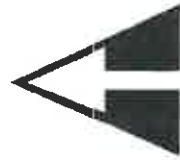
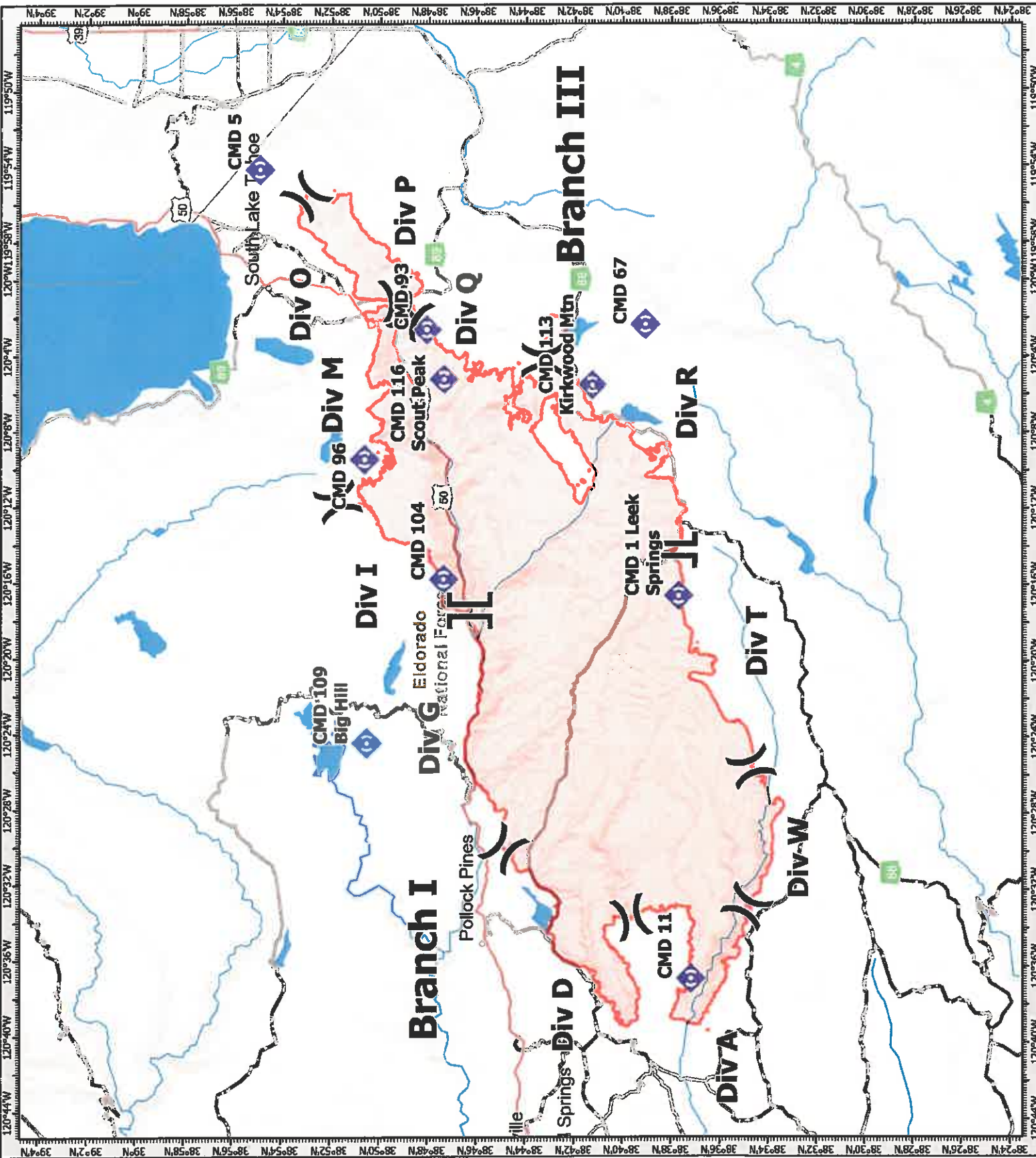
**5. Special Instructions**

<b>6. Prepared by (Communications Unit Leader):</b> Name: MIKE GREENE	Signature: 
ICS 205 - CONTROLLED UNCLASSIFIED INFORMATION//BASIC	Date/Time: 09/21/2021 1800





- Division Break
- Branch Break
- Repeater
- Wildfire Daily Fire Perimeter



# AIR OPERATIONS SUMMARY

PREPARED BY: JoAnn Overacker (AOBD)

PREPARED DATE - TIME: 09/21/21 - 1800

1. INCIDENT NAME: <b>Caldor</b>	2. OPERATIONAL PERIOD DATE: <b>9/22/21</b>	START: <b>0700</b>	END: <b>2000</b>	SUNRISE: <b>0647</b>	SUNSET: <b>1856</b>
3. REMARKS (Safety Notes, Hazards, Air Operations Special Equipment, etc.) <b>HLCO will fly in 5AE or 4HX fire while Firewatch 509 is down mechanical</b> <b>Track total gallons pulled per Dip Site and note on Helicopter Cost Summary.</b> <b>Ensure Covid precautions are exercised at Helibase</b>					
4. MEDEVAC A/C: H-5PT for Type II H-873 Hoist NVG See Medical Plan			5. IFR: Radius: Polygon Altitude: 11,500 MSL Center: Frequency: 118.6250		

6. PERSONNEL		7. FREQUENCIES		8. FIXED-WING	
Phone		AM	FM	Airtankers	# Avail/Type/Make-Model/FAA #/Base(s)
AOBD: JoAnn Overacker	209-559-1617	AIR/AIR FW: 118.6250			As Ordered: AA
ASGS(t): Rex Sundstrom	530-575-0368	AIR/AIR RW: 133.0250			
HEBM: Cammie Roy	907-750-6620	AIR TACTICS: 163.3375		Lead Planes	As Ordered
HEBM(t): Scott Magargee	205-335-4932	A/G CMD: 167.9500			
		A/G Buckets: 166.6125			
ATGS: Todd White	530-263-5621	A/G Cargo/Recon: 169.2875		ATGS Aircraft	AA-17
HLCO: Jed Smith	530-307-9171	DECK: 163.1000			
		TVL TEMP Tower: 127.1250		ATGS (Night)	As Ordered
		CALCORD: 156.0750			
		GUARD 16: 168.6250			

9. HELICOPTERS (Use Additional Sheets As Necessary)													
FAA #	Type	MAKE/MODEL	BASE	AVAIL	START	REMARKS	FAA #	Type	MAKE/MODEL	BASE	AVAIL	START	REMARKS
3TH	I	UH-60	Tahoe	0800	0700	Bucket - EU	H-516	II	Bell 212	Pacific	0800	0700	Bucket - EU
8CH	I	CH-47	Tahoe	"	"	Bucket - EU							
5HT	I	CH-54	Tahoe	"	"	Tank - EU							
1BH	I	UH-60	Tahoe	"	"	Bucket - CWN							
5PT	II	Bell 205++	Tahoe	"	"	Bucket - EU							
69H	II	Bell 205++	Tahoe	"	"	Rappel - EU							
4HX	III	Bell 407	Tahoe	"	"	EU							
5AE	III	A-Star 350	Tahoe	"	"	EU							
509	III	Cobra	Tahoe	"	"	Mechanical							

# MEDICAL PLAN (ICS 206 WF) CIIMT 12

<b>1. Incident Name</b>				<b>2. Operational Period</b>							
<b>CALDOR INCIDENT</b>				Date/Time: <b>09/22/2021 – 09/23/2021 (24 hours)</b>							
<b>3. EMS / Ambulance Services/Aid Stations</b>											
<b>Name</b>	<b>Location</b>			<b>Frequency/Phone</b>		<b>Advanced Life Support (ALS)</b> Yes No					
MEDICAL UNIT	ICP			805-813-3858 909-908-4778		X					
EL DORADO	CAMINO ECC SLT DISPATCH			530-647-5220 530-542-6148		X					
AMERICAN LEGION	CAMINO ECC SLT DISPATCH			530-647-5220 530-542-6148		X					
<b>4. Air Rescue / Air Ambulance Services</b>											
<b>Name</b>		<b>Phone</b>			<b>Type of Aircraft &amp; Capability</b>						
GUARD 873		CAMINO ECC 530-647-5220			HELICOPTER, ALS, 24/7 - HOIST						
CAREFLIGHT		CAMINO ECC 530-647-5220			AIR AMBULANCE ALS – NO HOIST						
CALSTAR 6		CAMINO ECC 530-647-5220			AIR AMBULANCE ALS – NO HOIST						
<b>5. Hospitals (all times estimated from incident location)</b>											
<b>Name &amp; Level</b>		<b>GPS Datum – WGS 84 Degrees Decimal Minutes</b>		<b>Travel Time</b> Air Gnd		<b>Phone</b>		<b>Helipad</b> Yes No		<b>Address</b>	
BARTON MEMORIAL HOSPITAL (LEVEL 3)		Lat:	N 38° 54.72'		2 MIN	5 MIN	530-541-3420	X		2170 South Ave. South Lake Tahoe, CA 96150	
		Long:	W 119° 59.72'								
RENOWN REGIONAL MEDICAL CENTER (LEVEL 2)		Lat:	N 39° 31.51'		20 MIN	1.5 HRS	775-982-2005	X		1156 Mill St Reno, NV 89502	
		Long:	W 119° 47.75'								
SUTTER ROSEVILLE MEDICAL CENTER (LEVEL 2)		Lat:	N 38° 45.97'		45 MIN	3 HRS	916-781-1200	X		1 Medical Plaza Dr. Roseville, CA 95661	
		Lat:	W 121° 14.87'								
UC DAVIS MEDICAL CENTER (LEVEL 1 TRAUMA/BURN)		Lat:	N 38° 33.32'		45 MIN	3 HRS	916-703-6576	X		2315 Stockton Blvd. Sacramento, CA 95817	
		Long:	W 121° 27.35'								
<b>6. Division / Crew Emergency Pre-Plan</b>								<i>Update and discuss with assigned resources daily.</i>			
Fireline EMT / Medic's Division / Branch Location											
Air Hoist site location site: Lat: / Long: / Elevation:											
Helispot: Lat: / Long: / Elevation:											
<b>7. Prepared By (Medical Unit Leader)</b>				<b>8. Date/Time</b>		<b>9. Reviewed By (Safety Officer)</b>			<b>10. Date/Time</b>		
MEDL NICK STEPANIAN 909-908-4778 MEDL BRANDON BENNEWATE 805-813-3858 <i>Brandon Bennewate</i>				09/21/2021 1600		SOF2 PAUL TOMPKINS 619-889-7533 <i>Paul Tompkins</i>			09/21/2021 1600		

# MEDICAL PLAN (ICS 206 WF) CIIMT 12

## Medical Incident Report

**FOR A NON-EMERGENCY INCIDENT, WORK THROUGH CHAIN OF COMMAND TO REPORT AND TRANSPORT INJURED PERSONNEL AS NECESSARY.**

**FOR A MEDICAL EMERGENCY: IDENTIFY ON SCENE INCIDENT COMMANDER BY NAME AND POSITION AND ANNOUNCE "MEDICAL EMERGENCY" TO INITIATE RESPONSE FROM IMT COMMUNICATIONS/DISPATCH.**

**Use the following items to communicate situation to communications/dispatch.**

**1. CONTACT COMMUNICATIONS / DISPATCH** (Verify correct frequency prior to starting report)

*Ex: "Communications, Div. Alpha. Stand-by for Emergency Traffic."*

**2. INCIDENT STATUS:** Provide incident summary (including number of patients) and command structure.

*Ex: "Communications, I have a Red priority patient, unconscious, struck by a falling tree. Requesting air ambulance to Forest Road 1 at (Lat./Long.) This will be the Trout Meadow Medical, IC is TFLD Jones. EMT Smith is providing medical care."*

Severity of Emergency / Transport Priority

- RED / PRIORITY 1** Life or limb threatening injury or illness. Evacuation need is **IMMEDIATE**  
*Ex: Unconscious, difficulty breathing, bleeding severely, 2° - 3° burns more than 4 palm sizes, heat stroke, disoriented.*
- YELLOW / PRIORITY 2** Serious Injury or illness. Evacuation may be **DELAYED** if necessary.  
*Ex: Significant trauma, unable to walk, 2° - 3° burns not more than 1-3 palm sizes.*
- GREEN / PRIORITY 3** Minor Injury or illness. **Non-Emergency transport**  
*Ex: Sprains, strains, minor heat-related illness.*

Nature of Injury or Illness & Mechanism of Injury

Brief Summary of Injury or Illness  
*(Ex: Unconscious, Struck by Falling Tree)*

Transport Request

*Air Ambulance / Short Haul/Hoist Ground Ambulance / Other*

Patient Location

*Descriptive Location & Lat. / Long. (WGS84)*

Incident Name

*Geographic Name + "Medical" (Ex: Trout Meadow Medical)*

On-Scene Incident Commander

*Name of on-scene IC of Incident within an Incident (Ex: TFLD Jones)*

Patient Care

*Name of Care Provider (Ex: EMT Smith)*

**3. INITIAL PATIENT ASSESSMENT:** Complete this section for each patient as applicable (start with the most severe patient)

Patient Assessment: See IRPG PAGE 106

Treatment:

**4. TRANSPORT PLAN:**

Evacuation Location (if different): (Descriptive Location (drop point, intersection, etc.) or Lat. / Long.) Patient's ETA to Evacuation Location:

Helispot / Extraction Site Size and Hazards:

**5. ADDITIONAL RESOURCES / EQUIPMENT NEEDS:**

*Example: Paramedic/EMT, Crews, Immobilization Devices, AED, Oxygen, Trauma Bag, IV/Fluid(s), Splints, Rope rescue, Wheeled litter, HAZMAT, Extrication :*

**6. COMMUNICATIONS: Identify State Air/Ground EMS Frequencies and Hospital Contacts as applicable**

Function	Channel Name/Number	Receive (RX)	Tone/NAC *	Transmit (TX)	Tone/NAC *
COMMAND					
AIR-TO-GRND					
TACTICAL					

**7. CONTINGENCY: Considerations:** If primary options fail, what actions can be implemented in conjunction with primary evacuation method? Be thinking ahead..

**8. ADDITIONAL INFORMATION:** Updates/Changes, etc. .

**REMEMBER:** Confirm ETA's of resources ordered. Act according to your level of training. Be Alert. Keep Calm. Think Clearly. Act Decisively..

# **Fire and COVID-19 Briefing Checklist**

## **Self-Awareness / Screening**

- **Notify** supervisor if you or others experience:
  - Cough, more than expected
  - Difficulty breathing
  - Loss of taste or smell
  - Fever
  - Chills
  - Sore throat
  - Muscle pain
- **Immediately separate** yourself from others.
- Follow crew and division plans to isolate, triage, and transport symptomatic personnel.

## **Hygiene on the Fireline**

- Properly wash or sanitize your hands often
- Avoid handshakes and communal use items
- Inform supervisor of needed resupply.
- Disinfect high touch surfaces often

## **Social distancing and protective equipment**

- Practice social distancing
- Conduct briefings in conversations outdoors and at least SIX feet apart
- Utilize face coverings
- Clean or replace dirty face coverings, equipment, and PPE

## **Communications**

- Ensure effective sender/receiver messaging.
- Protect yourself, your crew, and your camp!

Any questions contact:

BARTON HEALTH COVID HOTLINE: 530-600-1999

MEDL Brandon Bennewate @ (805) 813-3858

MEDL Nick Stepanian @ (909) 908-4778

# **FEDERAL EMPLOYEES AND CONTRACTORS**

EXTRACT FROM Secretary Vilsack and Deputy Secretary Bronaugh

Thank you to the tens of thousands of USDA employees who have already been fully vaccinated. For those of you who still need to be vaccinated, below are interim deadlines that will ensure you are two weeks from your last dose and thus fully vaccinated by the Nov. 22nd deadline. You can visit [vaccines.gov](https://www.vaccines.gov) to find a COVID-19 vaccine near you and learn more about the [benefits of vaccinations](#).

- **Oct. 11:** First dose deadline (Moderna COVID-19 vaccine)
- **Oct. 18:** First dose deadline (Pfizer COVID-19 vaccine)
- **Nov. 8:** Second dose deadline (Moderna and Pfizer vaccine)
- **Nov. 8:** First (only) dose deadline (Johnson and Johnson COVID-19 vaccine)
- **Nov. 22:** Federal employees must be fully vaccinated

Please be aware that USDA employees will be required to provide more information about vaccine status, including proof of vaccination. In the coming days, Pandemic Coordinators will be following up with their agency or staff office regarding how we will collect this information in a way that maintains privacy while also meeting new federal reporting requirements.

**If interested, please reach out to COVID Advisors**

## **East Caldor**

**Ben Gray 619-971-3808**

**Greg Flory 530-721-5975**

## **West Caldor**

**Christina Bui 503-702-3050**

**Darrious Truss 678-577-4807**



## FINANCE MESSAGE

<b>Fire Name:</b> Caldor Fire
<b>Fire Number:</b> CA-ENF-024030
<b>Accounting Code:</b> P5N8GM21
Email: <a href="mailto:2021.caldor.finance@firenet.gov">2021.caldor.finance@firenet.gov</a>
Hotline: 530-330-5450

### Finance Documents Needed upon "Check In" (If Not Already Submitted):

Please email these documents or scan the QR Code below, attach & submit.			
<b>Agency Equipment/ Crews:</b> <ul style="list-style-type: none"> <li>Manifest - showing employment type (GS or WG) or AD rates if applicable</li> </ul>	<b>Overhead:</b> <ul style="list-style-type: none"> <li>AD/Casual Hire Form</li> <li>If regular Agency please ensure "GS" or "WG" is written on your first CTR</li> </ul>	<b>Contract Equipment/ Contract Crews:</b> <ul style="list-style-type: none"> <li>Agreement</li> <li>Manifest</li> <li>Resource Order</li> <li>Inspections</li> </ul>	<b>Cooperator:</b> <ul style="list-style-type: none"> <li>Cooperative Agreement</li> <li>Resource Order</li> </ul>

### Please submit your CTR/Shift Tickets using the QR code or email address below:

Don't Forget to put your RO # on your CTR/Shift Ticket – final travel CTR's must be signed by supervisor on incident - Thank You

**Please Include the Word "Equipment" for Federal Equipment or "Time" for Federal Overhead & Crews in the Subject Line of the Email**



# Resource Advisor Update

**Avoidance areas for cultural and sensitive resources are being flagged within Divisions. If work needs to occur in areas identified by the following flagging/placard, please contact a REAF assigned to your Branch.**

## Avoidance Areas

**Eldorado NF**

**Pink/Black Checkered Flagging  
and yellow placards**



**LTBMU / Humboldt-Toiyabe NF**

**Yellow and Green Paired  
Flagging**



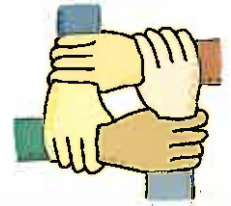
**Eldorado NF Lead READ – Jen House**

**Lake Tahoe Basin Lead READ – Emma Williams**





## Human Resource Message



SOMETIMES THE DUES WE PAY  
TO MAINTAIN INTEGRITY ARE  
PRETTY HIGH, BUT THE  
ULTIMATE COST OF MORAL  
COMPROMISE IS MUCH HIGHER.  
- MICHAEL JOSEPHSON

© Michael Josephson 2015

[whatwillmatter.com](http://whatwillmatter.com)

**Come by and say hello at the end of Trailer Row. Pick up a postcard to send home or drop off your filled postcards to send out.**

**Have a great shift!**

**Adrian Escobedo, HRSP 530-523-3804**

## *Caldor Fire*

*September 22nd 2021*

### To receive training credit for the *Caldor Fire*

- ◆ Email me your Completed 225 Eval's
- ◆ Fill out the online exit interview  
( QR code attached)
- ◆ Trainee's home unit  
mailing address
- ◆ Evaluator's home unit  
job title and name
- ◆ Position Task Book  
Tasks sign-off

One day prior to demob, please start the close out procedures with us. We are working remotely and will do our best to answer any questions you may have. Please call or email me with your questions.

Thanks for your cooperation.

***Morgan Madruga***  
**TRAINING SPECIALIST TRAINEE**  
**Merced Fire Department**  
**99 E 16<sup>th</sup> st Merced, Ca 95340**  
**209-386-2731**  
**MorganMadruga@yahoo.com**



# VIRTUAL DEMOBILIZATION

Please follow the steps below in order:

1. Scan the QR code and select the “REMOTE DEMOB” item. PLEASE DO NOT complete this step more than 12 hours prior to your demobilization
2. Complete the questionnaire
3. Go to Weed Wash if your vehicle has been on the fireline
4. Go to Ground Support for your post-inspection
5. Return items checked out from Supply
6. Return any items checked out in Comms
7. Go to Finance at the scheduled time to close out your CTR/Shift Tickets
8. Call Demob at 435-840-5432 to finalize your travel times.

**PLEASE NOTE:**

If you have any problems, contact Jan either by phone  
435-840-5432 or at DMOB



## TENTATIVE DEMOBS FOR WEDNESDAY, SEPTEMBER 22, 2021

### CREWS

TIME	RO #	RESOURCE NAME	ITEM CODE
0630	C-50020	EL DORADO IHC	HC1

### EQUIPMENT

TIME	RO #	RESOURCE NAME	ITEM CODE
0630	E-20239	OES T/F 6411T	MISC
740	E-200	ENF3	DOZ2

### OVERHEAD

TIME	R O #	RESOURCE NAME	ITEM CODE
0700	0-50391	JONAH GRAY	TFLD
0715	O-171	KRISTI SCHROEDER	PIO2
0745	O-50190	DARIUS LATTROPP	DPRO
0800	O-525	JAMES TASE	THSP
0815	O-20372	DERYCK BEVERIDGE	EMPF
0830	O-537	MARC YOUNG	FFT2
0900	O-444	CARLOS CAMBEROS	COML

# Acquiring lodging at the Harvey's hotel

Harvey's hotel is associated with Harrah's. They are across the street from each other and are joined by a tunnel under Hwy 50 on the Nevada side, just at the state line. They have opened the Harvey's hotel specifically for firefighters battling the Caldor fire. No public is staying at that property. **Hotel support and check in for Harvey's Hotel, including front desk services is located at the Harrah's property.** This includes check-in and any maintenance service. Large vehicle parking is at the large parking lot at Harrah's accessible off Lake Parkway. Small vehicles can access the parking structure at Harvey's. At both locations, collect the parking stub to go through the gate. There is no charge for parking. Exit gates will open from 0500 to 0700. You may still use your hotel card or ring for attendant to open the exit gate if needed.

[To reserve a room, scan this code \(or click here\) to make your reservation.](#) Be sure to have your purchase card and crew manifest ready to enter the names of the personnel for each room configuration purchased with that card:



After reserving, go to the Harrah's front desk and complete registration.

They are very understaffed, so please make every attempt to use the web link above to reserve, though you may also call the hotel desk at 775-691-0416 to reserve your room under "Caldor Fire".

Once you check in to the hotel on the Harrah's side, you will then proceed to Harvey's either through the underground tunnel or drive to the Harvey's parking structure. Note: the elevator bank closest to the (currently closed) Harvey's front desk is not in service. You will need to use the Mountain Tower elevator bank by the arcade.

The hotel asks that if you would like trash pickup, please place your trash bags in the hallway and call the front desk to let them know where it is. They don't have enough staff to patrol the halls. They are also available to clean rooms and deliver towels and other items, but you will need to call the front desk for that as well.

# Hotel Acquisition Process

The Caldor incident has authorized the individual procurement of hotel accommodations. This is for lodging only. The process below discusses financial procedure and documentation:

If you are a **local agency dispatched through CFAA**, you will need to acquire an S# prior to demob. This number will also be entered on your F42 form.

**Federal resources with a travel card** will be processed through your agency's travel reimbursement process. Finance will provide a 213 with approval statement upon demob, if required by your agency.

*All other non-federal resources, or federal resources that do not have purchasing capability, complete the following:*

**AD's who are able to pay** and get reimbursed for travel will need to pay lodging and get reimbursed through your normal reimbursement process. You will be given a 213 with authorization statement from the finance section during demob.

**For AD's and Seasonal Federal Employees who are unable to pay** for lodging, the buying team may be able to assist with purchasing your accommodations. Inquire with the incident Finance Section. Federal resources who have the crew boss card option should use this as a first option.

In accordance with each individual contract, **contractors** shall pay for lodging and submit receipts for additions to your invoice (OF-286). Itemized receipts ARE required by the finance section during demob. Also, please note that double occupancy may be required on many contracts.

The finance section will provide S#'s during your demob or sooner.

If you're not in one of these categories or uncertain, finance can help you check. Please use the hotline number: 530-330-5450 or email [2021.Caldor.finance@firenet.gov](mailto:2021.Caldor.finance@firenet.gov). If emailing include your resource number, type of resource and contact phone number.

# ICP LOGISTICS NOTES

Supply: 0600-2100

Ordering: 0600-2100

Communications: 24/7 Techs: 0600-2100

Food: Breakfast: 0600-0930

Dinner: 1800-2130

Refer Trailer: 0600-2100

Showers: 0500-1300 & 1500-2200

Laundry service: 0500-2200

Ground Support: 0600-2200

Mechanic: 0600-2200

Weed Wash: 0600-1200 1300-2200

Fuel: 0600-1100 and 1400-2200

Medical: 24/7

-Barton Clinic: 0630-0930

-COVID testing: M-F 0600-1200

-Mobile Medical Supply Trailer: M-Su 0600-2200

## PLEASE DO:

-Only drive ONE WAY in camp.

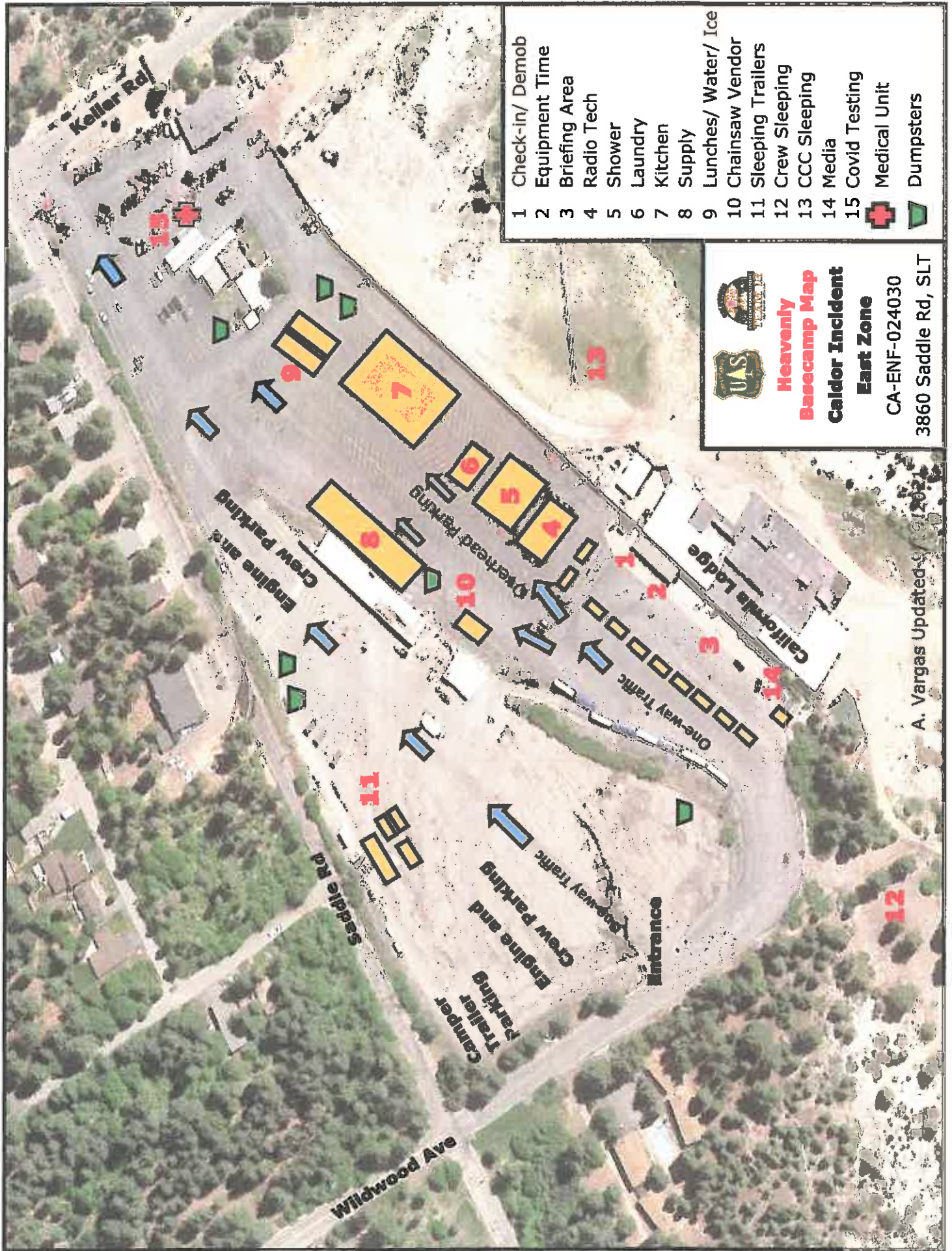
-Put trash in the dumpster and close the lid...we have Bears!



-Treat other people the way you want to be treated.

## PLEASE DO NOT:

-Walk on the roads that vehicles drive on.

-Sleep in vehicle parking areas.



- 1 Check-in/ Demob
  - 2 Equipment Time
  - 3 Briefing Area
  - 4 Radio Tech
  - 5 Shower
  - 6 Laundry
  - 7 Kitchen
  - 8 Supply
  - 9 Lunches/ Water/ Ice
  - 10 Chainsaw Vendor
  - 11 Sleeping Trailers
  - 12 Crew Sleeping
  - 13 CCC Sleeping
  - 14 Media
  - 15 Covid Testing
-  Medical Unit  
 Dumpsters




**Heavenly Basecamp Map**  
**Caldor Incident East Zone**  
 CA-ENF-024030  
 3860 Saddle Rd, SLT

A. Vargas Updated 9/19/2022

Keller Rd

Wildwood Ave

Saddle Rd

California Lodge

Entrance

Engine and Crew parking

Engine and Crew parking

Trailer Parking

Overhead parking

One-way Traffic

One-way Traffic

One-way Traffic

13

11

10

9

8

7

6

5

4

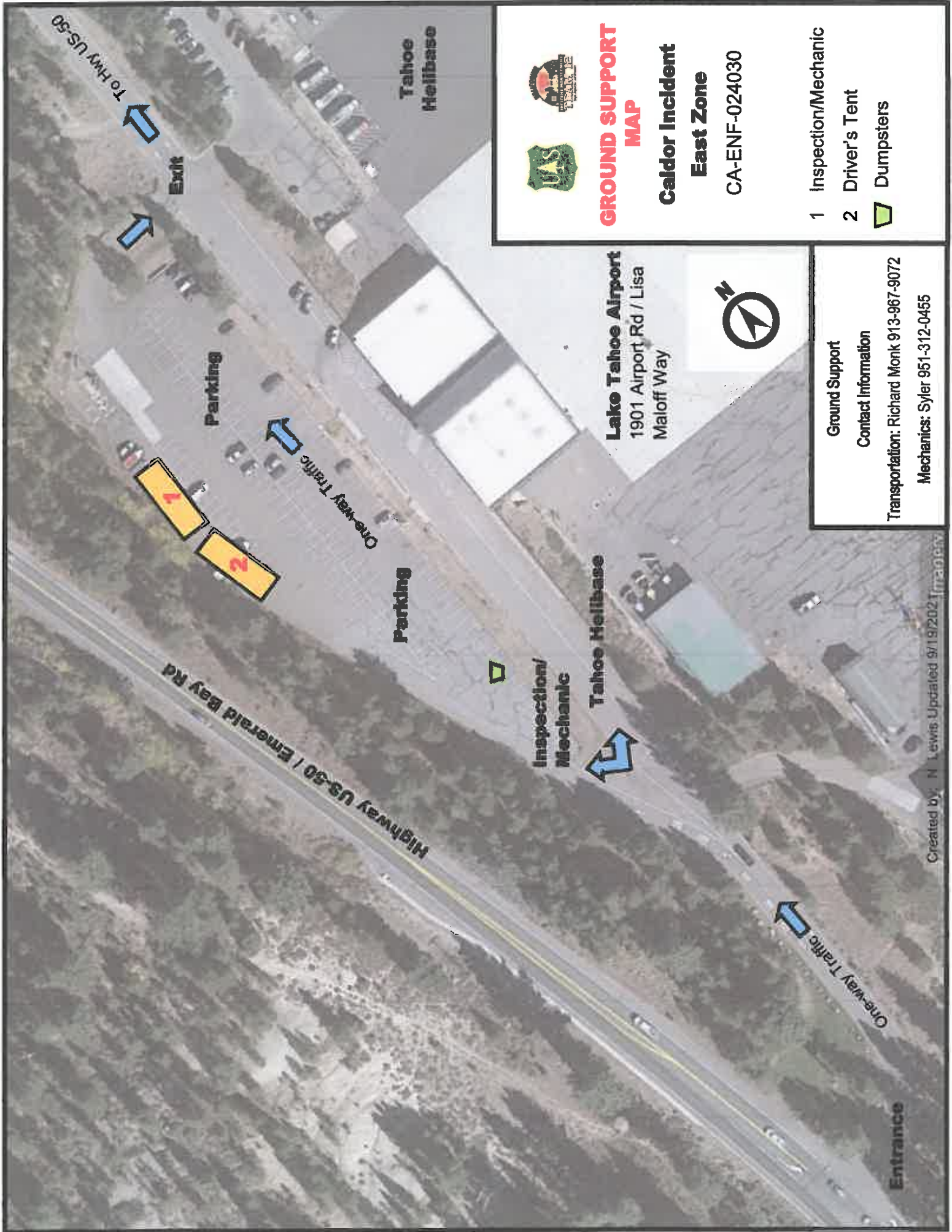
3

2

1

12





**GROUND SUPPORT  
MAP**

**Caldor Incident  
East Zone**

CA-ENF-024030

- 1 Inspection/Mechanic
- 2 Driver's Tent
- ▭ Dumpsters

Ground Support

Contact Information

Transportation: Richard Monk 913-967-9072

Mechanics: Syler 951-312-0455

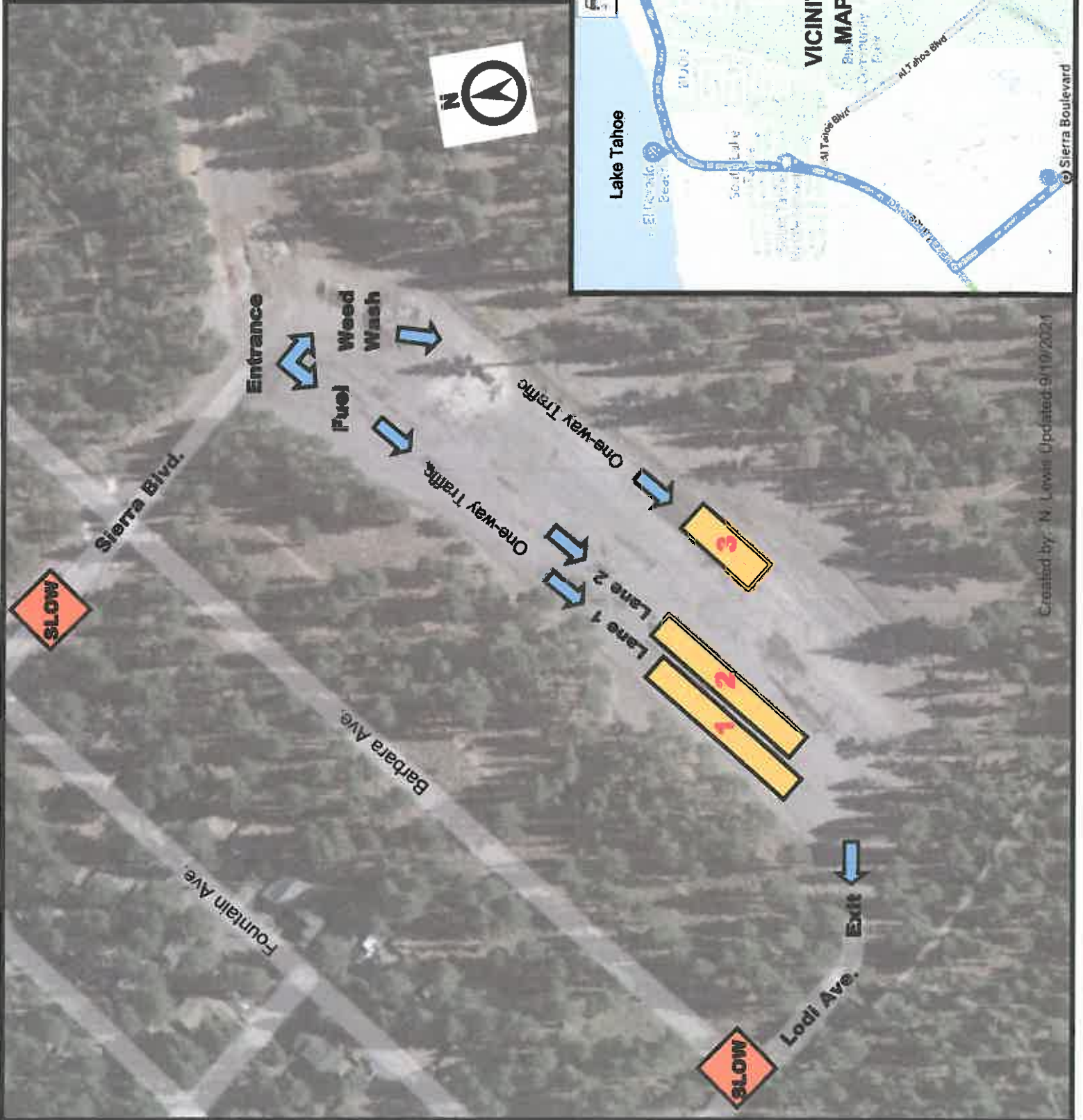


# WEED WASH AND REFUEL MAP

## Caldor Incident East Zone

CA-ENF-024030

- 1 Fuel Tender Lane 1
- 2 Fuel Tender Lane 2
- 3 Weed Wash



**STATE DPA  
CAL FIRE  
RESOURCES**









# ASSIGNMENT LIST (ICS 204 WF)

CONTROLLED UNCLASSIFIED  
INFORMATION/BASIC

<b>1. Incident Name:</b> <b>AEU Caldor Support</b>	<b>2. Operational Period:</b> Date From: 09/22/21    Date To: 09/23/21 Time From: 0700    Time To: 0700	<b>3. Branch</b> <b>Division</b> <b>FSR EAST</b> <b>EAST</b>
---	---	---

<b>4. Operations Personnel:</b> Operations Section Chief: <b>J. Vickers</b> Branch Director: <b>M. Scheeline (12hr)</b> Division/Group Supervisor: <b>N. Ozard (12hr)</b>		Night Ops: Branch Safety: Air Attack:
--	--	---

Page 1 of 2

5. Resources Assigned:		** Resources Below in Bold are 12 Hour **						
Resource Identifier	ALS	LWD	Leader	Personnel	Request #	Hours	Reporting Location	
CRW NEU 2349			<b>J. Wilburn</b>	6	<b>C-4</b>	0700-1900	HWY 50 x Jewell Rd	
DOZ PVT E-77 STAR			<b>A. Bennett</b>	1	<b>E-77</b>	0700-1900	HWY 50 x Jewell Rd	
W/T PVT E-51 FIRELINE			<b>R. Hurl</b>	1	<b>E-51</b>	0700-1900	HWY 50 x Jewell Rd	
MAST PVT E-91 KRISMAN			<b>T. Krisman</b>	1	<b>E-91</b>	0700-1900	HWY 50 x Jewell Rd	
MAST PVT E-92 HEAVY HAUL			<b>A. Harris</b>	1	<b>E-92</b>	0700-1900	HWY 50 x Jewell Rd	
MAST PVT E-93 COLLINS			<b>M. Collins</b>	1	<b>E-93</b>	0700-1900	HWY 50 x Jewell Rd	
MAST PVT E-94 COLMAN			<b>P. Leuzinger</b>	1	<b>E-94</b>	0700-1900	HWY 50 x Jewell Rd	
MAST PVT E-95 BLACK BEAR			<b>M. Bwling</b>	1	<b>E-95</b>	0700-1900	HWY 50 x Jewell Rd	
MAST PVT E-96 STEVEN HILL			<b>S. Hill</b>	1	<b>E-96</b>	0700-1900	HWY 50 x Jewell Rd	
MAST PVT E-97 GOLTERMAN			<b>C. Golterman</b>	1	<b>E-97</b>	0700-1900	HWY 50 x Jewell Rd	
MAST PVT E-109 SLOWMOW			<b>M. North</b>	1	<b>E-109</b>	0700-1900	HWY 50 x Jewell Rd	
EXC PVT E-47 KDK			<b>K. Drew</b>	1	<b>E-47</b>	0700-1900	HWY 50 x Jewell Rd	
EXC PVT E-53 FOOTHILL			<b>K. Kent</b>	1	<b>E-53</b>	0700-1900	HWY 50 x Jewell Rd	
EXC PVT E-65 LESLIE			<b>J. Kroller</b>	1	<b>E-65</b>	0700-1900	HWY 50 x Jewell Rd	
SKD PVT E-5 TRESSLER			<b>B. Davidson</b>	1	<b>E-5</b>	0700-1900	HWY 50 x Jewell Rd	
SKD PVT E-10 KLEE			<b>J. Klee</b>	1	<b>E10</b>	0700-1900	HWY 50 x Jewell Rd	
SKD PVT E-136 HERTZIG			<b>D. Briski</b>	1	<b>E-136</b>	0700-1900	HWY 50 x Jewell Rd	
CHIP PVT E-3 TIMBERSMITH			<b>C. Moultrie</b>	1	<b>E-3</b>	0700-1900	HWY 50 x Jewell Rd	

**6. Work Assignments:**  
Implement Fire Suppression repair plan.  
Identify and document fire suppression repair needs.

**7. Special Instructions:**

8. Communications							
Name	Ch	Function	Rx Freq	Rx Tone	Tx Freq	Tx Tone	Notes
CDF T27	7	TACTICAL	159.3075	192.8 (T16)	159.3075	192.8 (T16)	EST SRA & FSR EAST
TMU AD 2	3	COMMAND	171.5750	156.7 (T6)	165.4125	123.0 (T2)	TAHOE BASIN AEU SUPPORT
A/G TAC 2	14	AIR TO GROUND	169.2875		169.2875		A/G LOGS
CALCORD	15	MEDICAL	156.0750	156.7 (T6)	156.0750	156.7 (T6)	EMS COORDINATION ONLY
GUARD 16	16	EMERGENCY	168.6250		168.6250	110.9 (T1)	EMERGENCY USE ONLY

**9. Prepared by: Name:** N. Pimlott    RESL  
Signature:

ICS 204    Date/Time: 9/21/2021 2200    Personnel Count: 23







