

Thursday

INCIDENT ACTION PLAN

CALDOR INCIDENT

CA-ENF-024030

P5N8GM21



Maps, IAP, Virtual Briefing



OPERATIONAL PERIOD

9/23/2021 0700

to

9/24/2021 0700

INCIDENT OBJECTIVES (ICS 202)

1. Incident Name: <p style="text-align: center;">CALDOR</p>	2. Operational Period:	Date From: 9/23/2021	Date To: 9/24/2021
		Time From: 0700	Time To: 0700

3. Objective(s):

Leaders Intent:
 Work effectively with cooperative partners towards a common goal of protecting values in a safe and efficient manner. All incident assigned personnel should be prepared to take appropriate actions regarding:

- Personal safety and safety of others, including driving slowly, safely, and defensively while implementing tactics that offer a high probability of success.
- Professional conduct and timely / effective communications.
- Manage fatigue by taking breaks and maintaining work rest guidelines.
- All line supervision personnel, including crew leaders and strike team leaders, must attend Operational Briefings.

Management Objectives:

- Provide for emergency personnel and public safety at all times.
- Ensure COVID-19 precautions and best practices are met at all times.
- Protect property, improvements, and infrastructure.
- Ensure accurate coordinated, timely and accurate release of public information.
- Foster and maintain relationships with all cooperators and stakeholders.
- Protect economic, natural, cultural and heritage resources.
- Mitigate or eliminate environmental resource impacts as a result of fire suppression efforts.
- Maintain fiscal accountability and keep costs commensurate with values at risk.

Control Objectives:

- Keep the fire within its currently identified perimeter and north of Highway 4 to Highway 88.
- Keep the fire within its currently identified perimeter and south of Wentworth Springs Rd, to Mosquito Pass, and road systems N16A, N20A, N08, and N21.
- Keep the fire within its currently identified perimeter and east of County Highway E16 and Fiddletown.
- Keep the fire within its currently identified perimeter and west of the El Dorado County, Alpine County and State Line boundary.

COVID Mitigations:

- All persons must wear a mask indoors at all times regardless of vaccination status, as well as outdoors when physical distancing cannot be maintained.
- Maintain a module as one, wash your hands and sanitize surfaces.

5. Site Safety Plan Required? No

Approved Site Safety Plan(s) Located at:

6. Incident Action Plan


<input checked="" type="checkbox"/> ICS 203	<input type="checkbox"/> ICS 215A	<input type="checkbox"/> ICS 205 A	<input type="checkbox"/>
<input checked="" type="checkbox"/> ICS 204	<input checked="" type="checkbox"/> ICS 220	<input checked="" type="checkbox"/> Training Message	<input type="checkbox"/>
<input checked="" type="checkbox"/> ICS 205	<input checked="" type="checkbox"/> Facility Maps	<input checked="" type="checkbox"/> Travel Map	<input type="checkbox"/>
<input checked="" type="checkbox"/> ICS 206	<input checked="" type="checkbox"/> Weather Forecast	<input checked="" type="checkbox"/> Demob Plan	<input type="checkbox"/> County Health Message
<input checked="" type="checkbox"/> ICS 208	<input checked="" type="checkbox"/> Fire Behavior	<input checked="" type="checkbox"/> Finance Message	<input checked="" type="checkbox"/> ICS 214

7. Prepared By: Greg White Position/Title: PSC2 (T) Signature:

8. Approved by Incident Commander: Mike Nobles Signature:

ICS 202 NIMS IAP

ORGANIZATION ASSIGNMENT LIST (ICS 203)

1. Incident Name: CALDOR		2. Operational Period: Date From: 9/23/2021 Time From: 0700		Date To: 9/24/2021 Time To: 0700	
3. Incident Commander(s) and Command Staff:			7. Operation Section:		
IC	Mike Nobles, James Aragon(T)		Operations	Jim Snow, Mike Page(T)	
Deputy IC			Deputy Ops	Al Ward, Chris St Pierre(T)	
Safety Officer	Paul Tompkins, Mike Seymour(T), Trenton Prins(T)		Night Operations	Mike Koontz, Luis Gomez(T)	
Information Officer	Seneca Smith, Stephanie Bishop, DeLyn Siellet(T)				
Liaison Officer	Don Smith(T), Alan Taylor(T), Ryan Toby(T)		Branch	I	Robert Szczepanek
			Division/Group	G / T / W	Kevin Reese, Kevin DeJong(T), Charles Zimmerman(T)
Agency/Organization	Name		Division/Group	Suppression Repair	Brad Stewart
EI Dorado NF - AA	Jeff Marsolais		Division/Group		
EI Dorado NF - AA Rep.	Scot Rogers		Division/Group		
Lake Tahoe BMU - AA	Gwen Sanchez, Judy Palmer		Division/Group		
Humboldt Toiyabe NF - AA	Jon Stansfield		Branch	III	John Owings
CalFIRE Arep	Mike Blankenheim		Division/Group	I / M	Jason Flores
CalOES	Kit Bailey		Division/Group	O / P	Rob Noxon
EI Dorado SO	Deputy Greg Almos		Division/Group	Q	Kristian Litz, Andy Wordin(T)
Sierra Pacific Ind.	Tim Tate		Division/Group	R	Aaron Schumacher, Garth Crow
PG&E	Mike Webb		Division/Group	Suppression Repair	Rob Bertolina
Amador County SO	LT. Jason Navarre		Branch	Night	TBD
CHP	LT. Rick Hatfield		Division/Group	Night	Jeff Corser(T)
Cal Trans	Greg Duffy		Division/Group		
AT&T	Kevan Young		Division/Group		
BLM	Jerry Martinez		Division/Group		
EI Dorado Irrigation	Dan Corcoran		Division/Group		
East Fork FPD	Larry Goss		Branch	Strategic Planning	Greg Overacker, JT Sohr
COVID Advisor	Greg Flory, Christina Bui		Division/Group		
5. Planning Section:			Division/Group		
Chief	Steve Anderson, Greg White(T)		Division/Group		
Deputy	Ken Bates		Division/Group		
Resource Unit	Mike Yeun, Chris Adams, Derek Acosta(T)		Division/Group		
Situation Unit	Matt Snyder, Ray Rook(T), John Hamer (V)		Branch		
Documentation Unit	Nancy Nordensten(T)(V-RIST)		Division/Group		
Demobilization Unit	Jan Grisedale		Division/Group		
GISS	Rene Gonzalez		Division/Group		
FBAN	Dan O'Connor		Division/Group		
IMET	Patrick Gilchrist, Shawn Palmquist(T)		Division/Group		
Human Resources	Adrian Escobedo		Air Operations Branch		Director: JoAnn Overacker
Training Specialist	Derek Parker, Morgan Madruga(T)		Air Support Group Supervisor		Rex Sundstrom(T)
Lead READ	Emma Williams, Jennifer House		Air Tactical Group Supervisor		Todd White
6. Logistics Section			Helibase Manager		Cammie Roy, Scott Magargee(T)
Chief	Scott Ashbach				
Supply Unit	Ruben Lopez(T)		8. Finance/Administration Section:		
Facilities Unit	Art Curley, Wendell Simmons(T)		Chief	Lisa Wilson(V), Dave Dukart(V)	
Ground Support Unit	Rickey Tootle, Chris Syler		Time Unit	Rebecca Lang(T)	
Communications Unit	Mike Greene		Cost Unit		
Medical Unit	Brandon Bennewate, Nic Stepanian		Comp/Claims Unit	Roger Waters, Tracy Nicholson (V)	
ITSS	Brett Davidson		PTRC		
FOOD	Mikeal Gates		EQTR	Cara Scott, Christina Welch, Rachel Acker(V), Katina Bryant(V)	
Prepared By: Name:	Greg White	Position/Title:	PSC2 (T)	Signature:	
ICS 203		Date/Time:	9/22/2021 2300 hours		



INCIDENT WEATHER FORECAST



FORECAST NO: 36
 PREDICTION FOR: 24 Hour Shift
 SHIFT DATE: 09/23/21
 FORECAST ISSUED: 09/22/21 1900

NAME OF FIRE: Caldor
 UNIT: USFS El Dorado NF
 SIGNED: Patrick Gilchrist/Shawn Palmquist (T)
 Incident Meteorologist

WEATHER DISCUSSION:

The weather system that brought gusty southwest winds yesterday will slide into the Great Basin, causing winds to switch to the east-northeast today. Although not strong, these downslope winds will continue hot and dry conditions over the Caldor fire. Tonight upper ridging will build back into northern California, allowing the east-northeast winds to taper off. Expect hot and dry conditions again on Friday, but with light upslope/upvalley winds.

...Hot, Dry, with Easterly Wind Today...

.TODAY...

Sky/weather.....Partly cloudy.
 Max temperature.....67 to 79 above 5000 feet and 79 to 88 below 5000 feet.
 Min humidity.....15 to 21% above 5000 feet and 9 to 15% below 5000 feet.
 Wind (20 ft).....
 Slope/Valley.....East-northeast 8 to 15 mph.
 Ridgetop.....East-northeast 10 to 20 mph.
 Mixing height... increasing to 10000 ft MSL mid-afternoon.

.TONIGHT...

Sky/weather.....Mostly clear.
 Min temperature.....45 to 55 midslope to ridgetop. 40 to 45 valleys. (Upper 30s valleys east of the crest.)
 Max humidity.....30 to 40% midslope to ridgetop. 55 to 65% valleys.
 Wind (20 ft).....
 Slope/valley.....Becoming downslope/downvalley 2-5 mph around 1900
 Gusts to 10 mph through tighter canyons.
 Ridgetop.....East-northeast 10-20 mph, decreasing to 5-10 mph after midnight.

.FRIDAY...

Sky/weather.....Mostly sunny.
 Max temperature.....69 to 81 above 5000 feet and 81 to 90 below 5000 feet.
 Min humidity.....15 to 21% above 5000 feet and 9 to 15% below 5000 feet.
 Wind (20 ft).....
 Slope/Valley.....Upslope/upvalley 4-8 mph, gusts to 15 mph through tighter canyons.
 Ridgetop.....Southwest 8-12 mph.
 Mixing height... increasing to 10000 ft MSL mid-afternoon.

Incident Weather Station Data – SCAN Code with Smart Phone
 Branch I

Branch III



FIRE BEHAVIOR FORECAST

FORECAST NUMBER: 7	TYPE OF FIRE: Vegetation
FIRE NAME: Caldor	OPERATIONAL PERIOD: Sept 23 rd 24 Hour
DATE ISSUED: Sept 22 nd	TIME ISSUED: 2000
UNIT: CA El Dorado National Forest/Lake Tahoe Basin Management Unit	SIGNED: Dan O'Connor Fire Behavior Analyst (FBAN)

WEATHER SUMMARY: See detailed Fire Weather Forecast in IAP

FUELS:

Fire areas include a range of conifer systems with Ponderosa, Jeffrey Pine, Incense Cedar, and manzanita in the lower elevations towards the west, transitioning up into an Upper Montane forest of Ponderosa, Lodgepole Pine and Red Fir closer to Lake Tahoe. Anticipate heavy fuel loading, drought stress, overstocked timber stands, and a lack of fire history to both the north and south of the current fire footprint. The El Dorado National Forest is currently classified as 'Extreme to Exceptional' drought by the US Drought Monitor, with Energy Release Components exceeding the 90th percentile, not far off all time high levels. Heavy dead and down fuels will likely burn completely, holding heat and actively consuming through all hours of the day. Fine dead fuel moisture is calculated at 3% or less.

EXPECTED FIRE BEHAVIOR: *Based on the Warmest, Driest, Windiest Conditions Forecasted*

Maximum Spotting Distance ¼ mile Probability of Ignition 88%	Fuel Type/Model	Maximum Rate of Spread (chains/hour)	Maximum Flame Length (feet)
	Timber understory (TU5-Overstocked and/or dense reprod)	Head 10-15 ch/hr Flank 6-8 ch/hr	Head 7-9 ft Flank 4-6 ft
	Timber litter (TL6-closed canopy, ground fuels)	Head 5-7 ch/hr Flank 2-4 ch/hr	Head 3-5 ft Flank 2-4 ft

General: Hot, dry and windy today, only difference is the wind will be out of the North East, tapping into dry Great Basin air.

SPECIFIC

Branch 1 Dry NE flow will do its best to bring heat sources back to life for the western side of the fire. Potential for increased smoke production from needle cast burning interior to aid fire movement to green island jackpots.

Branch 3

Divisions India and Mike have scattered heat that will produce smoke across the interiors, with more persistence in working through rocked out areas adjacent to the Desolation Wilderness. Repopulation in the Highway 50 corridor may bring an increase in service calls; potential for reburn remains in the green islands.

Divisions Quebec and Romeo ENE winds will be aligned with the Caples Creek drainage, be heads up for fingers that could create paths up to the Highway 88 corridor- also plan for smoke impacts to the road system there. NE winds should be favorable to the upper portions of Quebec that have been more active over the past couple of days, pushing fire back in on itself.

Divisions Oscar and Papa do have high severity fire areas in the interior, but the edges are more mosaic severity so reburning and flare ups with threats to containment lines and adjacent communities are still possible. Low relative humidity will likely have heavies and root wads burning again, producing smoke visible to residents.

Night Operations: Anticipate continuation of service calls with residents back in their homes down Highway 50. Stay vigilant with the potential for reburn in the dirty burn areas due to drought conditions.

AIR OPERATIONS:

Potential smoke impacts again today in the Quebec/Romeo areas

SAFETY:

NE winds helped move the fire into position for its run out of Caples Creek- be heads up for slow/persistent movement into pockets of fuel that will promote more favorable growth.



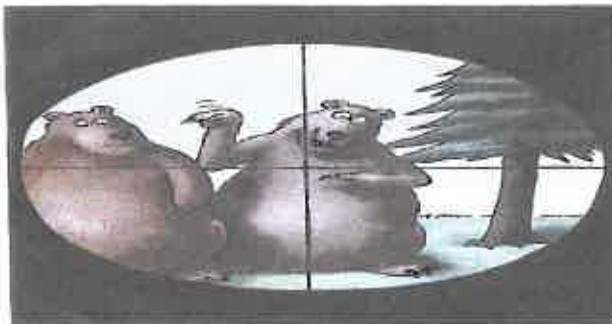
Health & Safety Message

Incident: CALDOR Fire CA-ENF- 024030	Date/Op Period: Day/Night Shift 9/23 - 24/21
--	--

Hazards & Risks

Chipper & Chainsaw Operations: Be sure to use only qualified and or certified chipper and chainsaw operators. Use of PPE is mandatory! Consider work proximity to each other; cutters in one area while the chipper crew follows up with the chipper. Establish traffic control when working alongside roadways. Watch your footing when working on steep cut banks and watch for brush roll-out landing on the highway. Use caution when using the directional chipper spray nozzle and keep personnel away from the spray zone.

Safety Zones: A safety zone is an area where a firefighter can survive without a fire shelter. The separation distance between firefighter and flames should be at least **4X the maximum flame height. This is based on flat terrain and no wind conditions. Safety Zones that are downwind and/or upslope from the fire will require larger separation distances.** Reference your IRPG for detailed safety zone size calculations. Ensure your **escape route** is clear of hazards and known to all.



Hunting Season is Open:

Hunting season is open; both bow and rifle. Be on the lookout for folks out and about looking for that trophy buck (or bear). Make yourselves known and visible in your work areas.

Hazards Reminder: Driving, high speed traffic on highways, hazard trees, weather changes, steep terrain, rolling rocks, fatigue, attitudes, heavy equipment, bears.....etc.

Paul Tompkins SOF2

**L. Lookouts C. Communications E. Escape Routes S. Safety Zones
BE MINDFUL**

ASSIGNMENT LIST (ICS 204 WF)

CONTROLLED UNCLASSIFIED
INFORMATION/BASIC

1. Incident Name: <p style="text-align: center; font-size: 1.2em;">CALDOR</p>		2. Operational Period: Date From: 09/23/21 Date To: 09/24/21 Time From: 0700 Time To: 0700				3. Branch Division <p style="text-align: center; font-size: 1.5em;">I G / T / W</p>	
4. Operations Personnel: Operations Section Chief: Jim Snow, Mike Page(T) Branch Director: Robert Szczepanek Division/Group Supervisor: Kevin Reese, Kevin DeJong(T), Charles Zimmerm		Night Ops: Mike Koontz, Luis Gomez(T) Deputy Ops: Al Ward, Chris St Pierre(T) Air Attack: Todd White					
5. Resources Assigned:		** Resources Below in Bold are 12 Hour **					
Resource Identifier	ALS	LWD	Leader	Personnel	Request #	Hours	Reporting Location
HC2 BLUE MOUNTAIN		10/3	PEREZ	20	C-50061	0700-1900	8 Mile Camp
HC2 DIAMOND FIRE		10/6	ANDREWS-JORDAN	20	C-50074	0700-1900	8 Mile Camp
ENG3 NV-B5331		9/30	ARROYO	4	E-50207	0700-1900	8 Mile Camp
ENG3 ROCKY MTN		9/30	STREHLE	3	E-50206	0700-1900	8 Mile Camp
ENG4 HEART VENTURES 1		9/30	WETZEL	3	E-50193	0700-1900	8 Mile Camp
ENG6 J3 CONTRACTING		10/3	EASLEY	3	E-50275	0700-1900	8 Mile Camp
ENG6 WHITEGRASS FIRE		9/30	WHITEGRASS	3	E-50266	0700-1900	8 Mile Camp
ENG6 GOODING		9/30	MCKINNEY	2	E-50199	0700-1900	8 Mile Camp
ENG6 RED DOG		9/30	ENGLAND	3	E-50205	0700-1900	8 Mile Camp
ENG6 SCHOLL FIRE & FUEL		10/3	MAHARREY	3	E-50291	0700-1900	8 Mile Camp
ENG6 COOPER CONTRACTING		10/3	MEDRANO	3	E-50292	0700-1900	8 Mile Camp
SKD SOFT TRACK ATTACK		10/4	EMERY	1	E-246	0700-1900	8 Mile Camp
FAL1 A&F ENTERPRISES		10/4	BOKISH	1	O-50088	0700-1900	8 Mile Camp
FAL1 MOEN TIMBER FALLING		10/4	MOEN	1	O-50089	0700-1900	8 Mile Camp
SOFR BARNHART		9/25	BARNHART	1	O-20796	0700-1900	8 Mile Camp
SOFR KAMNIKAR		9/24	KAMINKAR	1	O-20794	0700-1900	8 Mile Camp
EMPF STAPLES	X	9/22	STAPLES	1	E-50129	0700-1100	8 Mile Camp
EMPF HANNA	X	9/22	HANNA	1	E-50129	0700-1100	8 Mile Camp
EMPF KEFFER	X	10/6	EMPF KEFFER	1	E-50129	1100-1900	8 Mile Camp
EMPF SHEPPARD	X	10/6	EMPF SHEPPARD	1	E-50129	1100-1900	8 Mile Camp
EMPF DIEM	X	9/30	DIEM	1	O-50312	0700-1900	8 Mile Camp
EMTF MAKEMSON		9/30	MAKEMSON	1	O-50317	0700-1900	8 Mile Camp
6. Work Assignments: TASK: Secure existing line and provide for tactical patrol within the Hwy 50 corridor. Coordinate with REAFs and mop up to the extent necessary on the fires edge and within the perimeter where infrastructure and values at risk are present PURPOSE: Minimize any fire progression and ensure the safety of those working on the west side of Mormon Emigrant Trail END STATE: Fires edge in the division is controlled and escape is improbable							
7. Special Instructions: Backhaul trash, excess supplies and provide a location for accountable property Identify and coordinate the removal of hazard trees Resources denoted with * is identified as I/A resources within the TFR ***Resources need to report to 8 Mile Camp (4260 8 Mile Rd, Camino, CA 95709) for briefing and end of shift***							
8. Communications							
Name	Ch	Function	Rx Freq	Rx Tone	Tx Freq	Tx Tone	Notes
COMMAND SEE ICS 205	1	COMMAND					
NIFC T1	8	TACTICAL	168.0500N		168.0500N		
A/G CMD	14	A/G CMD	167.9500N		167.9500N		
CALCORD	15	COORDINATION	156.0750N	156.7	156.0750N	156.7	
GUARD 16	16	EMERGENCY	168.6250N		168.6250N	110.9	
9. Prepared by: Name:		Mike Yeun, Chris Adams, Derek Acosta(T)		RESL		Signature:	
ICS 204	Date/Time: 9/22/2021 2200			Personnel Count: 74			

ASSIGNMENT LIST (ICS 204 WF)

CONTROLLED UNCLASSIFIED
INFORMATION/BASIC

1. Incident Name: <p style="text-align: center;">CALDOR</p>	2. Operational Period: Date From: 09/23/21 Date To: 09/24/21 Time From: 0700 Time To: 0700	3. Branch Division <p style="text-align: center;">I Suppression Repair</p>
--	---	---

4. Operations Personnel: Operations Section Chief: Jim Snow, Mike Page(T) Branch Director: Robert Szczepanek Division/Group Supervisor: Brad Stewart	Night Ops: Mike Koontz, Luis Gomez(T) Deputy Ops Al Ward, Chris St Pierre(T) Air Attack: Todd White
---	--

5. Resources Assigned:		** Resources Below in Bold are 12 Hour **					
Resource Identifier	ALS	LWD	Leader	Personnel	Request #	Hours	Reporting Location
TFLD LOWELL		9/29	LOWELL	1	O-568	0700-1900	8 Mile Camp
TFLD HAYDON		10/6	HAYDON	1	O-50435	0700-1900	8 Mile Camp
HEQB SMITH		9/27	SMITH	1	O-562	0700-1900	8 Mile Camp
GROUP #1 MET							
WTS1 ASAP		10/2	DIXON	2	E-20015	0700-1900	8 Mile Camp
FEL1 SIERRA NEVADA		9/30	D. WASS	1	E-699	0700-1900	8 Mile Camp
CHIP YREKA OUTLANDS		10/5	JONES	3	E-50304	0700-1900	8 Mile Camp
EXCA2 LONESTAR ENT		9/30	MILLER	2	E-50231	0700-1900	8 Mile Camp
SKD SIERRA FOREST 2		9/30	J. WASS	1	E-705	0700-1900	8 Mile Camp
SKD SIERRA FOREST 3		9/30	DUARTE	1	E-706	0700-1900	8 Mile Camp
SKD T1 FORKNER		9/25	DIAL	2	E-50152	0700-1900	8 Mile Camp
PROC PATHFINDER		9/30	FULTON	1	E-730	0700-1900	8 Mile Camp
LOAD SIERRA NEVADA 2		9/30	DIBBLE	1	E-50173	0700-1900	8 Mile Camp
LOAD HEAVYHAUL		9/29	LESLIE	2	E-50226	0700-1900	8 Mile Camp
LOAD ROMINE TIMBER 1				1	E-724	0700-1900	8 Mile Camp
LOG TRK VOLCANO CREEK			ELLIOT	1	E-50156	0700-1900	8 Mile Camp
LOG TRK ARBORWORKS		9/27	YOUNGREN	1	E-50157	0700-1900	8 Mile Camp
LOG RIDGE LOGGING		9/30	SLACK	1	E-737	0700-1900	8 Mile Camp
LOG HEAVYHAUL		9/30	LESLIE	1	E-738	0700-1900	8 Mile Camp

6. Work Assignments:
 TASK: Perform priority suppression repair work within Branch 1. Repair contingency line along Peavine Ridge and Granite Springs Rd while continuing Hazard Tree Removal along Mormon Emigrant Trail and Sierra at Tahoe
 PURPOSE: Minimize any near-term environmental resource impacts as a result of fire suppression efforts
 END STATE: Watershed and areas adjacent to values at risk are protected using the approved standard


7. Special Instructions:
 Backhaul trash, excess supplies and provide a location for accountable property
 Identify and coordinate the removal of hazard trees
 Resources denoted with * is identified as I/A resources within the TFR
 Resources need to report to 8 Mile Camp (4260 8 Mile Rd, Camino, CA 95709) for briefing and end of shift

8. Communications							
Name	Ch	Function	Rx Freq	Rx Tone	Tx Freq	Tx Tone	Notes
COMMAND SEE ICS 205	1	COMMAND					
NIFC T6	9	TACTICAL	166.7750N		166.7750N		
A/G CMD	14	A/G CMD	167.9500N		167.9500N		
CALCORD	15	COORDINATION	156.0750N	156.7	156.0750N	156.7	
GUARD 16	16	EMERGENCY	168.6250N		168.6250N	110.9	

9. Prepared by: Name:	Mike Yeun, Chris Adams, Derek Acosta(T)	RESL	Signature:
ICS 204	Date/Time: 9/22/2021 2200	Personnel Count: 24	

ASSIGNMENT LIST (ICS 204 WF)

CONTROLLED UNCLASSIFIED
INFORMATION//BASIC

1. Incident Name: CALDOR		2. Operational Period: Date From: 09/23/21 Date To: 09/24/21 Time From: 0700 Time To: 0700				3. Branch Division I Suppression Repair	
4. Operations Personnel: Operations Section Chief: Jim Snow, Mike Page(T) Branch Director: Robert Szczepanek Division/Group Supervisor: Brad Stewart		Night Ops: Mike Koontz, Luis Gomez(T) Deputy Ops: Al Ward, Chris St Pierre(T) Air Attack: Todd White					
5. Resources Assigned:		** Resources Below in Bold are 12 Hour **					
Resource Identifier	ALS	LWD	Leader	Personnel	Request #	Hours	Reporting Location
GROUP #2 MET							
FEL1 PATHFINDER		9/30	SMITH	2	E-702	0700-1900	8 Mile Camp
SKD SIERRA FOREST 1		9/30	MARTIN	1	E-704	0700-1900	8 Mile Camp
SKD SIERRA FOREST 5		9/30	MARVIN	1	E-708	0700-1900	8 Mile Camp
LOAD SIERRA NEVADA 1		9/30	STANDBRIDGE	1	E-50172	0700-1900	8 Mile Camp
LOAD ROMINE TIMBER 2				1	E-725	0700-1900	8 Mile Camp
FMOD A&F ENTERPRISES 1		9/27	PAFFORD	2	O-234	0700-1900	8 Mile Camp
GROUP #3 GRINDING							
GRND ARBORWORKS		9/30	MEALIN	1	E-731	0700-1900	8 Mile Camp
LOAD BAMFORD 1		9/29	MONTGOMERY	1	E-720	0700-1900	8 Mile Camp
LOAD SIERRA FOREST		9/30	LANGLEY	1	E-50159	0700-1900	8 Mile Camp
LOAD BAMFORD 3		9/29	MONTGOMERY	1	E-723	0700-1900	8 Mile Camp
GROUP #4 SKI RESORT							
FEL2 J&R LOGGING		9/30	JIMENEZ	1	E-50151	0700-1900	8 Mile Camp
PROC J&R LOGGING		9/30	JIMENEZ	1	E-50150	0700-1900	8 Mile Camp
SKD SIERRA FOREST 4		9/30	CAMPBELL	1	E-707	0700-1900	8 Mile Camp
SKD J&R LOGGING		10/1	JIMENEZ	1	E-712	0700-1900	8 Mile Camp
SKD T1 CECIL LOGGING		9/29	HUNTER	1	E-50153	0700-1900	8 Mile Camp
LOAD BAMFORD 2		9/29	MONTGOMERY	1	E-721	0700-1900	8 Mile Camp
6. Work Assignments: TASK: Perform priority suppression repair work within Branch 1. Repair contingency line along Peavine Ridge and Granite Springs Rd while continuing Hazard Tree Removal along Mormon Emigrant Trail and Sierra at Tahoe PURPOSE: Minimize any near-term environmental resource impacts as a result of fire suppression efforts END STATE: Watershed and areas adjacent to values at risk are protected using the approved standard							
7. Special Instructions: Backhaul trash, excess supplies and provide a location for accountable property Identify and coordinate the removal of hazard trees Resources denoted with * is identified as I/A resources within the TFR ***Resources need to report to 8 Mile Camp (4260 8 Mile Rd, Camino, CA 95709) for briefing and end of shift***							
8. Communications							
Name	Ch	Function	Rx Freq	Rx Tone	Tx Freq	Tx Tone	Notes
COMMAND SEE ICS 205	1	COMMAND					
NIFC T6	9	TACTICAL	166.7750N		166.7750N		
A/G CMD	14	A/G CMD	167.9500N		167.9500N		
CALCORD	15	COORDINATION	156.0750N	156.7	156.0750N	156.7	
GUARD 16	16	EMERGENCY	168.6250N		168.6250N	110.9	
9. Prepared by: Name:		Mike Yeun, Chris Adams, Derek Acosta(T)		RESL		Signature: 	
ICS 204	Date/Time: 9/22/2021		2200		Personnel Count: 15		

ASSIGNMENT LIST (ICS 204 WF)

CONTROLLED UNCLASSIFIED
INFORMATION/BASIC

1. Incident Name: <p style="text-align: center;">CALDOR</p>	2. Operational Period: Date From: 09/23/21 Date To: 09/24/21 Time From: 0700 Time To: 0700	3. Branch Division <p style="text-align: center;">I Suppression Repair</p>
--	---	---

Page 3 of 4

4. Operations Personnel: Operations Section Chief: Jim Snow, Mike Page(T) Branch Director: Robert Szczepanek Division/Group Supervisor: Brad Stewart	Night Ops: Mike Koontz, Luis Gomez(T) Deputy Ops Al Ward, Chris St Pierre(T) Air Attack: Todd White
---	--

5. Resources Assigned:	** Resources Below in Bold are 12 Hour **							
Resource Identifier	ALS	LWD	Leader	Personnel	Request #	Hours	Reporting Location	
GROUP #5 WRIGHTS LAKE								
HEQB(T) APACHITO		10/2	APACHITO	1	O-550	0700-1900	8 Mile Camp	
DOZ2 HERTZIG		9/27	HERTZIG	1	E-101	0700-1900	8 Mile Camp	
DOZ3 TOM'S EARTHMOVING		9/30	FUNES	2	E-50239	0700-1900	8 Mile Camp	
* EXCA ENF 7462		9/26	LANGENDERFER	1	E-728	0700-1900	8 Mile Camp	
EXCA VENTANA RANCH		9/25	LOVERTON	1	E-689	0700-1900	8 Mile Camp	
EXCA EMERSON		9/25	SHERRILL	1	E-50154	0700-1900	8 Mile Camp	
EXCA INGRAM		9/24	WHEELER	1	E-50155	0700-1900	8 Mile Camp	
EXCA BRUCE YOUNG		10/1	YOUNG	1	E-241	0700-1900	8 Mile Camp	
MAST PVT (E-58)			FINDLETON	1	E-58	0700-1900	8 Mile Camp	
SKDG DC FIRE		10/2	MARTIN	2	E-247	0700-1900	8 Mile Camp	
REAF FOULK		9/29	FOULK	1	O-181	0700-1900	8 Mile Camp	

6. Work Assignments:
TASK: Perform priority suppression repair work within Branch 1. Repair contingency line along Peavine Ridge and Granite Springs Rd while continuing Hazard Tree Removal along Mormon Emigrant Trail and Sierra at Tahoe
PURPOSE: Minimize any near-term environmental resource impacts as a result of fire suppression efforts
END STATE: Watershed and areas adjacent to values at risk are protected using the approved standard

7. Special Instructions:
 Backhaul trash, excess supplies and provide a location for accountable property
 Identify and coordinate the removal of hazard trees
 Resources denoted with * is identified as I/A resources within the TFR
 Resources need to report to 8 Mile Camp (4260 8 Mile Rd, Camino, CA 95709) for briefing and end of shift

8. Communications							
Name	Ch	Function	Rx Freq	Rx Tone	Tx Freq	Tx Tone	Notes
COMMAND SEE ICS 205	1	COMMAND					
NIFC T6	9	TACTICAL	166.7750N		166.7750N		
A/G CMD	14	A/G CMD	167.9500N		167.9500N		
CALCORD	15	COORDINATION	156.0750N	156.7	156.0750N	156.7	
GUARD 16	16	EMERGENCY	168.6250N		168.6250N	110.9	

9. Prepared by: Name: Mike Yeun, Chris Adams, Derek Acosta(T) **RESL**
 Signature: **Personnel Count: 13**

ICS 204 Date/Time: 9/22/2021 2200

ASSIGNMENT LIST (ICS 204 WF)

CONTROLLED UNCLASSIFIED
INFORMATION/BASIC

1. Incident Name: CALDOR	2. Operational Period: Date From: 09/23/21 Date To: 09/24/21 Time From: 0700 Time To: 0700	3. Branch Division I Suppression Repair
---	---	--

Page 4 of 4

4. Operations Personnel:	
Operations Section Chief: Jim Snow, Mike Page(T) Branch Director: Robert Szczepanek Division/Group Supervisor: Brad Stewart	Night Ops: Mike Koontz, Luis Gomez(T) Deputy Ops Al Ward, Chris St Pierre(T) Air Attack: Todd White

5. Resources Assigned:		** Resources Below in Bold are 12 Hour **					
Resource Identifier	ALS	LWD	Leader	Personnel	Request #	Hours	Reporting Location
GROUP #6 KIRKWOOD							
TFLD HUMBACH			HUMBACH	1	O-566	0700-1900	8 Mile Camp
TFLD(T) BERKE			BERKE	1	O-576	0700-1900	8 Mile Camp
HC2 MOUNTAINEER MT2		9/26	WENCESLAO	20	C-50043	0700-1900	8 Mile Camp
CHIP WOOD CHUCK		9/25	TINGLER	1	E-50174	0700-1900	8 Mile Camp
EXCA WEST WOOD		9/26	WEST	2	E-232	0700-1900	8 Mile Camp
EXCA COTTONWOOD		9/29	HARTLEY	2	E-687	0700-1900	8 Mile Camp
EXCA CLAYTON		9/30	TITTLE	2	E-50228	0700-1900	8 Mile Camp
FEL1 AXSUS		10/6	AKRE	2	E-716	0700-1900	8 Mile Camp
CARE AMBULANCE 527		10/3	GLINE/HATZ	2	E-20628	0700-1900	8 Mile Camp
ARCH COOPER			COOPER	1	O-180	0700-1900	8 Mile Camp
ARCH(T) MARTI			MARTI	1	O-572	0700-1900	8 Mile Camp

6. Work Assignments:
 TASK: Perform priority suppression repair work within Branch 1. Repair contingency line along Peavine Ridge and Granite Springs Rd while continuing Hazard Tree Removal along Mormon Emigrant Trail and Sierra at Tahoe
 PURPOSE: Minimize any near-term environmental resource impacts as a result of fire suppression efforts
 END STATE: Watershed and areas adjacent to values at risk are protected using the approved standard

7. Special Instructions:
 Backhaul trash, excess supplies and provide a location for accountable property
 Identify and coordinate the removal of hazard trees
 Resources denoted with * is identified as I/A resources within the TFR
 Resources need to report to 8 Mile Camp (4260 8 Mile Rd, Camino, CA 95709) for briefing and end of shift

8. Communications							
Name	Ch	Function	Rx Freq	Rx Tone	Tx Freq	Tx Tone	Notes
COMMAND SEE ICS 205	1	COMMAND					
NIFC T6	9	TACTICAL	166.7750N		166.7750N		
A/G CMD	14	A/G CMD	167.9500N		167.9500N		
CALCORD	15	COORDINATION	156.0750N	156.7	156.0750N	156.7	
GUARD 16	16	EMERGENCY	168.6250N		168.6250N	110.9	

9. Prepared by: Name: Mike Yeun, Chris Adams, Derek Acosta(T) RESL
 Signature: _____
ICS 204 Date/Time: 9/22/2021 2200 Personnel Count: 35

ASSIGNMENT LIST (ICS 204 WF)

CONTROLLED UNCLASSIFIED
INFORMATION//BASIC

1. Incident Name:	2. Operational Period:	3. Branch	Division
CALDOR	Date From: 09/23/21 Date To: 09/24/21 Time From: 0700 Time To: 0700	III	I / M


4. Operations Personnel:		Page 1 of 2
Operations Section Chief: Jim Snow, Mike Page(T) Branch Director: John Owings Division/Group Supervisor: Jason Flores	Night Ops: Mike Koontz, Luis Gomez(T) Deputy Ops: Al Ward, Chris St Pierre(T) Air Attack: Todd White	

5. Resources Assigned:		** Resources Below in Bold are 12 Hour **					
Resource Identifier	ALS	LWD	Leader	Personnel	Request #	Hours	Reporting Location
HC2 SZ FORESTRY		10/5	FULLERTON	19	C-50068	0700-1900	HEAVENLY ICP
WFM BLACK HILLS		9/24	DUEKEER	10	E-50208	0700-1900	HEAVENLY ICP
SMOD NMCIF ACOMA 2		9/23	CARABAJAL	16	O-50194	0700-1900	HEAVENLY ICP
ENG3 HART 291		10/6	GATES	3	E-291	0700-1900	HEAVENLY ICP
ENG3 CCD 3363		9/30	WILLIAMS	5	E-50196	0700-1900	HEAVENLY ICP
ENG3 DS FIRE SUPPRESSION		9/27	DAGNELL	3	E-50161	0700-1900	HEAVENLY ICP
ENG3 NWS 1667		9/28	ARNDT	6	E-50177	0700-1900	HEAVENLY ICP
ENG4 DUKE CITY 401		10/3	LAKE	3	E-50276	0700-1900	HEAVENLY ICP
ENG6 TX-TXF E641		9/27	UAL	4	E-466	0700-1900	HEAVENLY ICP
ENG6 FIRECO LLC		10/3	DOUGLASS	3	E-50282	0700-1900	HEAVENLY ICP
ENG6 METHOW RIVER 11		10/3	BELL	3	E-50277	0700-1900	HEAVENLY ICP
ENG6 HECK OF A FIRE		10/3	HECK	3	E-50220	0700-1900	HEAVENLY ICP
ENG6 METAL WORKS		10/3	SOUTHWICK	3	E-50281	0700-1900	HEAVENLY ICP
ENG6 FLASHOVER		10/2	VINCENT	3	E-50209	0700-1900	HEAVENLY ICP
WTS2 MARTIN		10/3	MARTIN	1	E-50241	0700-1900	HEAVENLY ICP
WTS3 RAVEN FIRE LLC		10/2	GADSBY	1	E-50249	0700-1900	HEAVENLY ICP
WTS3 BUSCHER ENGINES		10/3	BUSCHER	1	E-50289	0700-1900	HEAVENLY ICP

6. Work Assignments:
 TASK: Secure containment lines south of Lyons Lake. Utilize natural barriers as containment lines and provide for perimeter control near the communities of Wrights Lake and Echo Lakes. Mop up to the extent necessary on the fires edge and provide for tactical patrol, responding to community needs along Hwy 50
 PURPOSE: Minimize any fire progression and ensure the safety of those working north of Hwy 50
 END STATE: Fires edge in the division is controlled and escape is improbable

7. Special Instructions:
 Backhaul trash, excess supplies and provide a location for accountable property
 Identify and coordinate the removal of hazard trees
 Resources denoted with * is identified as I/A resources within the TFR
 Medic 60, ALS Ambulance for Highway 50 patrol
 Resources need to report to Heavenly ICP (3860 Saddle Rd., South Lake Tahoe, CA 96150) for briefing and end of shift

8. Communications							
Name	Ch	Function	Rx Freq	Rx Tone	Tx Freq	Tx Tone	Notes
COMMAND SEE ICS 205	1	COMMAND					
NIFC T1	6	TACTICAL	168.0500N		168.0500N		
A/G CMD	14	A/G CMD	167.9500N		167.9500N		
CALCORD	15	COORDINATION	156.0750N	156.7	156.0750N	156.7	
GUARD 16	16	EMERGENCY	168.6250N		168.6250N	110.9	

9. Prepared by: Name: Mike Yeun, Chris Adams, Derek Acosta(T) RESL Signature: 

ICS 204 Date/Time: 9/22/2021 2200 Personnel Count: 87

ASSIGNMENT LIST (ICS 204 WF)

CONTROLLED UNCLASSIFIED
INFORMATION/BASIC

1. Incident Name: <p style="text-align: center;">CALDOR</p>	2. Operational Period: Date From: 09/23/21 Date To: 09/24/21 Time From: 0700 Time To: 0700	3. Branch Division <p style="text-align: center;">III I / M</p>
--	---	---

Page 2 of 2

4. Operations Personnel: Operations Section Chief: Jim Snow, Mike Page(T) Branch Director: John Owings Division/Group Supervisor: Jason Flores	Night Ops: Mike Koontz, Luis Gomez(T) Deputy Ops: Al Ward, Chris St Pierre(T) Air Attack: Todd White
---	---

5. Resources Assigned:		** Resources Below in Bold are 12 Hour **					
Resource Identifier	ALS	LWD	Leader	Personnel	Request #	Hours	Reporting Location
FAL1 CTL BLAIR		9/29	BLAIR	1	O-50346	0700-1900	HEAVENLY ICP
FAL1 CTL ELDERD		9/29	ELDERD	1	O-50347	0700-1900	HEAVENLY ICP
FAL1 CTL WHITE		9/29	WHITE	1	O-50348	0700-1900	HEAVENLY ICP
FAL1 CTL GREEN		9/29	GREEN	1	O-50349	0700-1900	HEAVENLY ICP
FAL1 CTL HOLLAND		9/29	HOLLAND	1	O-50350	0700-1900	HEAVENLY ICP
SKD2 CTL FOREST MGMT		9/29	KREGOSKI	6	E-50188	0700-1900	HEAVENLY ICP
LOAD CTL FOREST MGMT 1		9/29	KREGOSKI	6	E-50189	0700-1900	HEAVENLY ICP
LOAD CTL FOREST MGMT 2		9/29	KREGOSKI	6	E-50187	0700-1900	HEAVENLY ICP
STEN DAVIS		10/5	DAVIS	1	O-50450	0700-1900	HEAVENLY ICP
TFLD OOSAHWE		9/29	OOSAHWE	1	O-50290	0700-1900	HEAVENLY ICP
FMOD UNDERDOG 3		9/25	RILEY	2	O-50086	0700-1900	HEAVENLY ICP
FMOD A&F ENTERPRISES 2		10/3	JENKINS	2	O-50344	0700-1900	HEAVENLY ICP
EMPF VASQUEZ	X	9/30	VASQUEZ	1	O-50379	0700-1900	HEAVENLY ICP
EMPF BUBEN	X	9/27	BUBEN	1	O-50170	0700-1900	HEAVENLY ICP

6. Work Assignments:
 TASK: Secure containment lines south of Lyons Lake. Utilize natural barriers as containment lines and provide for perimeter control near the communities of Wrights Lake and Echo Lakes. Mop up to the extent necessary on the fires edge and provide for tactical patrol, responding to community needs along Hwy 50
 PURPOSE: Minimize any fire progression and ensure the safety of those working north of Hwy 50
 END STATE: Fires edge in the division is controlled and escape is improbable

7. Special Instructions:
 Backhaul trash, excess supplies and provide a location for accountable property
 Identify and coordinate the removal of hazard trees
 Resources denoted with * is identified as I/A resources within the TFR
 Medic 60, ALS Ambulance for Highway 50 patrol
 Resources need to report to Heavenly ICP (3860 Saddle Rd., South Lake Tahoe, CA 96150) for briefing and end of shift

8. Communications							
Name	Ch	Function	Rx Freq	Rx Tone	Tx Freq	Tx Tone	Notes
COMMAND SEE ICS 205	1	COMMAND					
NIFC T1	6	TACTICAL	168.0500N		168.0500N		
A/G CMD	14	A/G CMD	167.9500N		167.9500N		
CALCORD	15	COORDINATION	156.0750N	156.7	156.0750N	156.7	
GUARD 16	16	EMERGENCY	168.6250N		168.6250N	110.9	

9. Prepared by: Name: Mike Yeun, Chris Adams, Derek Acosta(T) RESL
 Signature:

ICS 204 Date/Time: 9/22/2021 2200 Personnel Count: 31

ASSIGNMENT LIST (ICS 204 WF)

CONTROLLED UNCLASSIFIED
INFORMATION/BASIC

1. Incident Name: <p style="text-align: center;">CALDOR</p>	2. Operational Period: Date From: 09/23/21 Date To: 09/24/21 Time From: 0700 Time To: 0700	3. Branch Division <p style="text-align: center;">III O / P</p>
--	---	---


4. Operations Personnel: Operations Section Chief: Jim Snow, Mike Page(T) Branch Director: John Owings Division/Group Supervisor: Rob Noxon		Night Ops: Mike Koontz, Luis Gomez(T) Deputy Ops: Al Ward, Chris St Pierre(T) Air Attack: Todd White
--	--	---

5. Resources Assigned:		** Resources Below In Bold are 12 Hour **					
Resource Identifier	ALS	LWD	Leader	Personnel	Request #	Hours	Reporting Location
HC2 BIRRUETA REFORESTATION		10/1	BIRREUTA	20	C-50060	0700-1900	HEAVENLY ICP
HC2 VA INTERAGENCY 01		10/2	FREEMAN	21	C-50063	0700-1900	HEAVENLY ICP
* ENG3 TMU E341		9/29	KING	3	E-50090	0700-1900	HEAVENLY ICP
ENG3 B5121		10/2	BRANDEBURG	2	E-50268	0700-1900	HEAVENLY ICP
ENG3 MT-NWS 1262		9/30	WARD	3	E-50203	0700-1900	HEAVENLY ICP
ENG3 J3 CONTRACTING E29		9/30	WALLACE	3	E-50215	0700-1900	HEAVENLY ICP
ENG4 SUNDANCE FIRE		10/3	TIERNEY	3	E-50283	0700-1900	HEAVENLY ICP
ENG4 J3 CONSTRUCTION 1		10/3	STEENHUIZEN	3	E-21269	0700-1900	HEAVENLY ICP
ENG5 YABOY E805		10/5	BAWER	3	E-50178	0700-1900	HEAVENLY ICP
ENG6 E2628		9/30	SPARGO	2	E-50212	0700-1900	HEAVENLY ICP
ENG6 MT-E646		10/4	MCHUGH	3	E-50204	0700-1900	HEAVENLY ICP
FMOD NORTH ZONE FALLERS		10/1	NEALY	2	O-50341	0700-1900	HEAVENLY ICP
FMOD GREEN JR		10/1	GREEN	2	O-50343	0700-1900	HEAVENLY ICP
SOF2 MOYER		9/29	MOYER	1	O-50306	0700-1900	HEAVENLY ICP
SOFR (T) CABANAS		10/3	CABANAS	1	O-50402	0700-1900	HEAVENLY ICP
EMPF ESTRADA	X	9/23	ESTRADA	1	O-50220	0700-1900	HEAVENLY ICP
EMPF SCHELIN	X	9/23	SCHELIN	1	O-20841	0700-1900	HEAVENLY ICP

6. Work Assignments:
 TASK: Provide for a tactical patrol and respond to any calls for service. Coordinate with REAFs and mop up to the extent necessary on the fires edge and within the perimeter where infrastructure and values at risk are present.
 PUROSE: Minimize any fire progression, keeping the fire within its current footprint
 END STATE: Fires edge in the division is controlled and escape is improbable

7. Special Instructions:
 Backhaul trash, excess supplies and provide a location for accountable property
 Identify and coordinate the removal of hazard trees
 Resources denoted with * is identified as I/A resources within the TFR
 Resources need to report to Heavenly ICP (3860 Saddle Rd., South Lake Tahoe, CA 96150) for briefing and end of shift

8. Communications							
Name	Ch	Function	Rx Freq	Rx Tone	Tx Freq	Tx Tone	Notes
COMMAND SEE ICS 205	1	COMMAND					
NIFC T6	7	TACTICAL	166.7750N		166.7750N		
A/G CMD	14	A/G CMD	167.9500N		167.9500N		
CALCORD	15	COORDINATION	156.0750N	156.7	156.0750N	156.7	
GUARD 16	16	EMERGENCY	168.6250N		168.6250N	110.9	

9. Prepared by: Name: Mike Yeun, Chris Adams, Derek Acosta(T) RESL
 Signature: 
ICS 204 Date/Time: 9/22/2021 2200 Personnel Count: 74

ASSIGNMENT LIST (ICS 204 WF)

CONTROLLED UNCLASSIFIED
INFORMATION//BASIC

1. Incident Name: <p style="text-align: center; font-weight: bold;">CALDOR</p>		2. Operational Period: Date From: 09/23/21 Date To: 09/24/21 Time From: 0700 Time To: 0700				3. Branch <p style="text-align: center; font-size: 24pt; font-weight: bold;">III</p>		Division <p style="text-align: center; font-size: 24pt; font-weight: bold;">Q</p>	
4. Operations Personnel: Operations Section Chief: Jim Snow, Mike Page(T) Branch Director: John Owings Division/Group Supervisor: Kristian Litz, Andy Wordin(T)						Night Ops: Mike Koontz, Luis Gomez(T) Deputy Ops: Al Ward, Chris St Pierre(T) Air Attack: Todd White			
5. Resources Assigned:		** Resources Below in Bold are 12 Hour **							
Resource Identifier	ALS	LWD	Leader	Personnel	Request #	Hours	Reporting Location		
HC1 TAHOE IHC		9/26	GUERRERO	22	C-50079	0700-1900	HEAVENLY ICP		
HC1 REDDING		9/25	MALLIA	19	C-50076	0700-1900	HEAVENLY ICP		
HC1 SALMON IHC		10/6	LOFDHAL	18	C-50075	0700-1900	HEAVENLY ICP		
HC2IA TANANA CHIEFS		9/27	SIMPLE	18	C-104	0700-1900	HEAVENLY ICP		
HC2IA WHITE MOUNTAIN		9/26	STANSEL	21	C-107	0700-1900	HEAVENLY ICP		
HC2IA SLIDE MOUNTAIN		9/26	HIGGINS	21	C-50049	0700-1900	HEAVENLY ICP		
HC2IA ZEPHYR		9/26	FOGARTY	20	C-50050	0700-1900	HEAVENLY ICP		
HC2IA TD CREW 21		9/28	ZINK	14	C-50053	0700-1900	HEAVENLY ICP		
* HC2IA IRON MOUNTAIN 31		9/30	MCKURTIS	18	C-50062	0700-1900	HEAVENLY ICP		
HC2 RIFLE PEAK		9/28	ELLIS	22	C-50054	0700-1900	HEAVENLY ICP		
HC2 HVP 51		10/1	RITZMAN	18	C-50058	0700-1900	HEAVENLY ICP		
HC2 FRANCO 2		10/3	ALVAREZ	20	C-111	0700-1900	HEAVENLY ICP		
* ENG3 TMU E344		10/3	AULD	5	E-50274	0700-1900	HEAVENLY ICP		
ENG3 TNF E361		9/26	OKERMAN	5	E-50279	0700-1900	HEAVENLY ICP		
ENG3 AZ-CENTRAL 66		10/1	KONTZ	4	E-50269	0700-1900	HEAVENLY ICP		
ENG3 AZ-SUM		10/2	GLAZENER	3	E-50270	0700-1900	HEAVENLY ICP		
ENG4 HEART VENTURES 2		10/3	BLACKCROW	3	E-50280	0700-1900	HEAVENLY ICP		
ENG4 IDAHO HEATSEEKER		10/3	JOHNSON	3	E-50290	0700-1900	HEAVENLY ICP		
ENG4 TIMBER BASIN E1		10/6	FARMER	3	E-50316	0700-1900	HEAVENLY ICP		
ENG6 NBF 661		10/2	JONES	3	E-50222	0700-1900	HEAVENLY ICP		
6. Work Assignments: TASK: Actively suppress any fire near Buck Pasture. Prep dozer line for potential firing operation along Schneider Camp 4x4 Rd. Mop up to the extent necessary, utilizing natural barriers and secure any heat sources between DP-65 and Scout Peak PURPOSE: Minimize any fire progression and ensure the safety of those working within the division END STATE: Fires edge in the division is controlled and escape is improbable									
7. Special Instructions: Backhaul trash, excess supplies and provide a location for accountable property Identify and coordinate the removal of hazard trees Resources denoted with * is identified as I/A resources within the TFR ***Resources need to report to Heavenly ICP (3860 Saddle Rd., South Lake Tahoe, CA 96150) for briefing and end of shift***									
8. Communications									
Name	Ch	Function	Rx Freq	Rx Tone	Tx Freq	Tx Tone	Notes		
COMMAND SEE ICS 205	1	COMMAND							
NIFC T3	8	TACTICAL	168.6000N		168.6000N				
A/G CMD	14	A/G CMD	167.9500N		167.9500N				
CALCORD	15	COORDINATION	156.0750N	156.7	156.0750N	156.7			
GUARD 16	16	EMERGENCY	168.6250N		168.6250N	110.9			
9. Prepared by: Name: Mike Yeun, Chris Adams, Derek Acosta(T)				RESL		Signature:			
ICS 204		Date/Time: 9/22/2021 2200		Personnel Count: 254					

ASSIGNMENT LIST (ICS 204 WF)

CONTROLLED UNCLASSIFIED
INFORMATION//BASIC

1. Incident Name: <p style="text-align: center;">CALDOR</p>	2. Operational Period: Date From: 09/23/21 Date To: 09/24/21 Time From: 0700 Time To: 0700	3. Branch Division <p style="text-align: center;">III Q</p>
--	---	---

4. Operations Personnel: Operations Section Chief: Jim Snow, Mike Page(T) Branch Director: John Owings Division/Group Supervisor: Kristian Litz, Andy Wordin(T)	Night Ops: Mike Koontz, Luis Gomez(T) Deputy Ops Al Ward, Chris St Pierre(T) Air Attack: Todd White
--	--

5. Resources Assigned:		** Resources Below in Bold are 12 Hour **					
Resource Identifier	ALS	LWD	Leader	Personnel	Request #	Hours	Reporting Location
ENG6 ALPINE WILDFIRE		10/1	PINSON	3	E-21103	0700-1900	HEAVENLY ICP
ENG6 PEANUT PIE		10/2	GOOD GUN	3	E-50219	0700-1900	HEAVENLY ICP
ENG6 OC FORESTRY		10/4	ABEL	3	E-50293	0700-1900	HEAVENLY ICP
ENG6 TORCH FIRE		10/6	DAVIS	3	E-50318	0700-1900	HEAVENLY ICP
WTT2 CGS INC		10/19	CORELY	1	E-20280	0700-1900	HEAVENLY ICP
WTS2 OXFORD		9/25	CLARK	1	E-257	0700-1900	HEAVENLY ICP
WTS2 HOME STYLE WATER		10/4	CASTILLO	1	E-50288	0700-1900	HEAVENLY ICP
WTS3 MOAPA VALLEY FD		10/2	WITTER	1	E-50245	0700-1900	HEAVENLY ICP
WTS3 AZ-PTP		10/2	FINCH	2	E-50242	0700-1900	HEAVENLY ICP
DO22 CECIL LOGGING		10/5	CAMPBELL	2	E-20702	0700-1900	HEAVENLY ICP
SKD BULL CREEK		10/4	CAHOON	2	E-65	0700-1900	HEAVENLY ICP
FMOD UNDERDOG TIMBER 1		9/23	BROWN	2	O-232	0700-1900	HEAVENLY ICP
TFLD MACARTHUR		9/24	MACARTHUR	1	O-224	0700-1900	HEAVENLY ICP
TFLD BROOKS		10/5	BROOKS	1	O-50484	0700-1900	HEAVENLY ICP
TFLD(T) SHEPHERD		9/24	SHEPHERD	1	O-50012	0700-1900	HEAVENLY ICP
SOFR JOHNSON		9/23	JOHNSON	1	O-50210	0700-1900	HEAVENLY ICP
EMPF GHISLETTA	X	9/30	GHISLETTA	1	O-50313	0700-1900	HEAVENLY ICP
EMPF DEYOUNG	X	10/3	DEYOUNG	1	O-50407	0700-1900	HEAVENLY ICP
EMPF FLORES (UTV)	X	10/4	FLORES	1	E-50176	0700-1900	HEAVENLY ICP
EMTF WIDICK (UTV)		10/4	WIDICK	1	E-50176	0700-1900	HEAVENLY ICP

6. Work Assignments:
 TASK: Actively suppress any fire near Buck Pasture. Prep dozer line for potential firing operation along Schneider Camp 4x4 Rd. Mop up to the extent necessary, utilizing natural barriers and secure any heat sources between DP-65 and Scout Peak
 PURPOSE: Minimize any fire progression and ensure the safety of those working within the division
 END STATE: Fires edge in the division is controlled and escape is improbable

7. Special Instructions:
 Backhaul trash, excess supplies and provide a location for accountable property
 Identify and coordinate the removal of hazard trees
 Resources denoted with * is identified as I/A resources within the TFR
 Resources need to report to Heavenly ICP (3860 Saddle Rd., South Lake Tahoe, CA 96150) for briefing and end of shift

8. Communications

Name	Ch	Function	Rx Freq	Rx Tone	Tx Freq	Tx Tone	Notes
COMMAND SEE ICS 205	1	COMMAND					
NIFC T3	8	TACTICAL	168.6000N		168.6000N		
A/G CMD	14	A/G CMD	167.9500N		167.9500N		
CALCORD	15	COORDINATION	156.0750N	156.7	156.0750N	156.7	
GUARD 16	16	EMERGENCY	168.6250N		168.6250N	110.9	

9. Prepared by: Name: Mike Yeun, Chris Adams, Derek Acosta(T) RESL
 Signature:

ICS 204 Date/Time: 9/22/2021 2200 Personnel Count: 30

ASSIGNMENT LIST (ICS 204 WF)

CONTROLLED UNCLASSIFIED
INFORMATION/BASIC

1. Incident Name: <p style="text-align: center; font-size: 1.2em;">CALDOR</p>		2. Operational Period: Date From: 09/23/21 Date To: 09/24/21 Time From: 0700 Time To: 0700				3. Branch <p style="text-align: center; font-size: 1.5em;">III</p>		Division <p style="text-align: center; font-size: 1.5em;">R</p>	
4. Operations Personnel: Operations Section Chief: Jim Snow, Mike Page(T) Branch Director: John Owings Division/Group Supervisor: Aaron Schumacher, Garth Crow						Night Ops: Mike Koontz, Luis Gomez(T) Deputy Ops: Al Ward, Chris St Pierre(T) Air Attack: Todd White			
5. Resources Assigned:		** Resources Below in Bold are 12 Hour **							
Resource Identifier	ALS	LWD	Leader	Personnel	Request #	Hours	Reporting Location		
HC2 FIRESTORM		10/2	LOPEZ	20	C-108	0700-1900	HEAVENLY ICP		
ENG3 CCD 3324		10/1	VANDERSLICE	4	E-50195	0700-1900	HEAVENLY ICP		
ENG3 J3 CONTRACTING 2		9/25	MCANDREW	3	E-50294	0700-1900	HEAVENLY ICP		
ENG3 CORTEZ FPD		9/27	ANDERSON	5	E-50321	0700-1900	HEAVENLY ICP		
ENG4 COOPER CONTRACTING		10/1	BURWELL	3	E-50223	0700-1900	HEAVENLY ICP		
ENG4 BOSKET'S PLUMBING		9/30	BAILEY	3	E-50202	0700-1900	HEAVENLY ICP		
ENG4 PACIFIC OASIS		10/3	WILSON	3	E-50285	0700-1900	HEAVENLY ICP		
ENG6 INDIANOLA		9/29	ALLSOP	3	E-50198	0700-1900	HEAVENLY ICP		
ENG6 N45		9/29	NAEGELE	2	E-50265	0700-1900	HEAVENLY ICP		
ENG6 BKF 664		9/29	WOLFF	3	E-50201	0700-1900	HEAVENLY ICP		
ENG6 OREGON WOODS INC		10/1	PARKINS	3	E-50210	0700-1900	HEAVENLY ICP		
ENG6 ALLEN FIRE LLC		10/1	ALLEN	3	E-50218	0700-1900	HEAVENLY ICP		
ENG6 TIMBER RIDGE		10/3	TODD	3	E-50284	0700-1900	HEAVENLY ICP		
ENG6 GRIZ ONE		10/3	TABER	3	E-50286	0700-1900	HEAVENLY ICP		
ENG6 FIRST STRIKE		10/3	FOOTE	3	E-50278	0700-1900	HEAVENLY ICP		
ENG6 YABOY FIRE		10/6	BRADY	3	E-50320	0700-1900	HEAVENLY ICP		
ENG6 WALCZYK		10/6	COLE	2	E-50322	0700-1900	HEAVENLY ICP		
6. Work Assignments: TASK: Secure existing line and utilize natural barriers as control lines. Mop up to the extent necessary near Kirkwood Lake and secure any heat sources south of Hwy 88 PURPOSE: Minimize any fire progression and ensure the safety of those working near Hwy 88 END STATE: Fires edge in the division in controlled and escape is improbable									
7. Special Instructions: Backhaul trash, excess supplies and provide a location for accountable property Identify and coordinate the removal of hazard trees Resources denoted with * is identified as I/A resources within the TFR ***Resources need to report to Heavenly ICP (3860 Saddle Rd., South Lake Tahoe, CA 96150) for briefing and end of shift***									
8. Communications									
Name	Ch	Function	Rx Freq	Rx Tone	Tx Freq	Tx Tone	Notes		
COMMAND SEE ICS 205	1	COMMAND							
NIFC T7	9	TACTICAL	168.2500N		168.2500N				
A/G CMD	14	A/G CMD	167.9500N		167.9500N				
CALCORD	15	COORDINATION	156.0750N	156.7	156.0750N	156.7			
GUARD 16	16	EMERGENCY	168.6250N		168.6250N	110.9			
9. Prepared by: Name:		Mike Yeun, Chris Adams, Derek Acosta(T)			RESL		Signature:		
ICS 204	Date/Time: 9/22/2021		2200		Personnel Count: 69				

ASSIGNMENT LIST (ICS 204 WF)

CONTROLLED UNCLASSIFIED
INFORMATION//BASIC

1. Incident Name: CALDOR	2. Operational Period: Date From: 09/23/21 Date To: 09/24/21 Time From: 0700 Time To: 0700	3. Branch Division III R
---	---	---

4. Operations Personnel: Operations Section Chief: Jim Snow, Mike Page(T) Branch Director: John Owings Division/Group Supervisor: Aaron Schumacher, Garth Crow	Night Ops: Mike Koontz, Luis Gomez(T) Deputy Ops Al Ward, Chris St Pierre(T) Air Attack: Todd White
---	--

Page 2 of 2 Romeo

5. Resources Assigned:		** Resources Below in Bold are 12 Hour **					
Resource Identifier	ALS	LWD	Leader	Personnel	Request #	Hours	Reporting Location
WTS2 IDAHO HEAVY EQUIP		9/27	HOLLIDAY	2	E-387	0700-1900	HEAVENLY ICP
WTS2 DAHL & SONS		10/4	DAHL	1	E-20019	0700-1900	HEAVENLY ICP
DO22 BUFFINGTON		10/17	BENSON	2	E-20022	0700-1900	HEAVENLY ICP
DO22 2C LAND AND TIMBER		9/30	CARRIOO	2	E-50234	0700-1900	HEAVENLY ICP
DO23 DEUCES TRUCKING		9/30	JOHNSON	3	E-50238	0700-1900	HEAVENLY ICP
STEN(T) DOHMAN		10/5	DOHMAN	1	O-50492	0700-1900	HEAVENLY ICP
EMPF POTTS	X	9/24	POTTS	1	O-20840	0700-1900	HEAVENLY ICP
EMTF PRADO		9/24	PRADO	1	O-50111	0700-1900	HEAVENLY ICP

6. Work Assignments:
 TASK: Secure existing line and utilize natural barriers as control lines. Mop up to the extent necessary near Kirkwood Lake and secure any heat sources south of Hwy 88
 PURPOSE: Minimize any fire progression and ensure the safety of those working near Hwy 88
 END STATE: Fires edge in the division in controlled and escape is improbable

7. Special Instructions:
 Backhaul trash, excess supplies and provide a location for accountable property
 Identify and coordinate the removal of hazard trees
 Resources denoted with * is identified as I/A resources within the TFR
 Resources need to report to Heavenly ICP (3860 Saddle Rd., South Lake Tahoe, CA 96150) for briefing and end of shift

8. Communications

Name	Ch	Function	Rx Freq	Rx Tone	Tx Freq	Tx Tone	Notes
COMMAND SEE ICS 205	1	COMMAND					
NIFC T7	9	TACTICAL	168.2500N		168.2500N		
A/G CMD	14	A/G CMD	167.9500N		167.9500N		
CALCORD	15	COORDINATION	156.0750N	156.7	156.0750N	156.7	
GUARD 16	16	EMERGENCY	168.6250N		168.6250N	110.9	

9. Prepared by: Name:	Mike Yeun, Chris Adams, Derek Acosta(T)	RESL	Signature:
ICS 204	Date/Time: 9/22/2021 2200	Personnel Count: 13	

ASSIGNMENT LIST (ICS 204 WF)

CONTROLLED UNCLASSIFIED
INFORMATION/BASIC

1. Incident Name: <p style="text-align: center; font-weight: bold;">CALDOR</p>		2. Operational Period: Date From: 09/23/21 Date To: 09/24/21 Time From: 0700 Time To: 0700				3. Branch Division <p style="text-align: center; font-size: 2em; font-weight: bold;">III Suppression Repair</p>	
4. Operations Personnel: Operations Section Chief: Jim Snow, Mike Page(T) Branch Director: John Owings Division/Group Supervisor: Rob Bertollina		Night Ops: Mike Koontz, Luis Gomez(T) Deputy Ops: Al Ward, Chris St Pierre(T) Air Attack: Todd White				Page 1 of 3	
5. Resources Assigned:		** Resources Below in Bold are 12 Hour **					
Resource Identifier	ALS	LWD	Leader	Personnel	Request #	Hours	Reporting Location
HC2 R&R CONTRACTING		9/25	IBARRA	20	C-50041	0700-1900	HEAVENLY ICP
HC2 GRIZZLY FIREFIGHTERS		9/25	FONSECA	20	C-50042	0700-1900	HEAVENLY ICP
HC2 MS REGULAR 1		9/26	GLADNEY	22	C-50047	0700-1900	HEAVENLY ICP
HC2 COOPER CONTRACTING		9/26	GRIMALDO	20	C-50048	0700-1900	HEAVENLY ICP
HC2 PACIFIC COAST		10/2	CISNEROS	20	C-50003	0700-1900	HEAVENLY ICP
HC2 MILLER TIMBER		10/5	SCOTT	20	C-50069	0700-1900	HEAVENLY ICP
HC2 PATRICK ENVIRON		10/6	DOMBI	20	C-50071	0700-1900	HEAVENLY ICP
HC2 MOUNTAINEERING		10/5	PEREZ	20	C-50072	0700-1900	HEAVENLY ICP
UTIL CRAIG		9/25	CRAIG	3	E-50165	0700-1900	HEAVENLY ICP
WTS1 LOVATO		10/3	LOVATO	1	E-50248	0700-1900	HEAVENLY ICP
WTT2 QUALITY CONST		10/1	INDIHOR	1	E-20008	0700-1900	HEAVENLY ICP
WTS2 ABLE SERVICES		10/2	DREW	1	E-50240	0700-1900	HEAVENLY ICP
WTT2 AC WATER		10/19	ROSE	1	E-20017	0700-1900	HEAVENLY ICP
WTS3 KLEINWORTH		10/2	KLEINWORTH	1	E-50247	0700-1900	HEAVENLY ICP
WTS3 US RANCH		10/2	SALAZAR	1	E-50246	0700-1900	HEAVENLY ICP
EXCA JW MORRISON		9/30	DALE	1	E-50229	0700-1900	HEAVENLY ICP
EXCA MC EXCAVATION		10/3	STANHUPE	2	E-235	0700-1900	HEAVENLY ICP
EXCA HACKER MACHINES		10/1	ARCE	2	E-50233	0700-1900	HEAVENLY ICP
EXCA PRO INC		10/2	ROE	2	E-50261	0700-1900	HEAVENLY ICP
EXCA BALDWIN DIESEL		10/2	MILLER	2	E-50232	0700-1900	HEAVENLY ICP
EXCA SERMON		10/2	SERMON	2	E-50260	0700-1900	HEAVENLY ICP
EXCA WESTERN MT EXCA		10/4	BUGLI	2	E-50264	0700-1900	HEAVENLY ICP
6. Work Assignments: TASK: Perform priority suppression repair work within Branch 3. Coordinate closely with CALFIRE AEU and USFS REAFs, focusing efforts of hazard tree removal along Scout Peak Rd in Angora Meadow, Tahoe Mtn and Highlands PURPOSE: Minimize any near-term environmental resource impacts as a result of fire suppression efforts END STATE: Watershed and areas adjacent to values at risk are protected using the approved standard							
7. Special Instructions: Backhaul trash, excess supplies and provide a location for accountable property Identify and coordinate the removal of hazard trees Resources denoted with * is identified as I/A resources within the TFR ***Resources need to report to Heavenly ICP (3860 Saddle Rd., South Lake Tahoe, CA 96150) for briefing and end of shift***							
8. Communications							
Name	Ch	Function	Rx Freq	Rx Tone	Tx Freq	Tx Tone	Notes
COMMAND SEE ICS 205	1	COMMAND					
VFIRE 24	10	TACTICAL	154.272N		154.2725N		
A/G CMD	14	A/G CMD	167.9500N		167.9500N		
CALCORD	15	COORDINATION	156.0750N	156.7	156.0750N	156.7	
GUARD 16	16	EMERGENCY	168.6250N		168.6250N	110.9	
9. Prepared by: Name:		Mike Yeun, Chris Adams, Derek Acosta(T)		RESL		Signature:	
ICS 204		Date/Time: 9/22/2021 2200				Personnel Count: 176	

ASSIGNMENT LIST (ICS 204 WF)

CONTROLLED UNCLASSIFIED
INFORMATION/BASIC

1. Incident Name: <p style="text-align: center; font-weight: bold;">CALDOR</p>	2. Operational Period: Date From: 09/23/21 Date To: 09/24/21 Time From: 0700 Time To: 0700	3. Branch Division <p style="text-align: center; font-size: 2em; font-weight: bold;">III Suppression Repair</p>
--	---	---

Page 2 of 3

4. Operations Personnel: Operations Section Chief: Jim Snow, Mike Page(T) Branch Director: John Owings Division/Group Supervisor: Rob Bertolina	Night Ops: Mike Koontz, Luis Gomez(T) Deputy Ops: Al Ward, Chris St Pierre(T) Air Attack: Todd White
--	---

5. Resources Assigned:		** Resources Below in Bold are 12 Hour **					
Resource Identifier	ALS	LWD	Leader	Personnel	Request #	Hours	Reporting Location
GRD JDB3		9/27	WERRY	2	E-50147	0700-1900	HEAVENLY ICP
GRD MILLSAPS		9/24	HANSEN	2	E-50148	0700-1900	HEAVENLY ICP
CHIP MCKELLAR TREE SERV		9/26	AYALA	3	E-50134	0700-1900	HEAVENLY ICP
CHIP SISKIYOU TREES		9/30	LANGE	3	E-50136	0700-1900	HEAVENLY ICP
CHIP S&W DISASTER		10/6	HATCH	3	E-50305	0700-1900	HEAVENLY ICP
MAST JANC		10/1	JANC	2	E-50251	0700-1900	HEAVENLY ICP
MAST PERRAULT		10/1	DECUIR	2	E-50250	0700-1900	HEAVENLY ICP
FMOD REDWOOD EMPIRE		10/2	GONZALEZ	2	O-50342	0700-1900	HEAVENLY ICP
FMOD UNDERDOG TIMBER 2		10/6	POOR	2	O-20140	0700-1900	HEAVENLY ICP
TFLD NELSON			NOT CHECKED IN	1	O-50334	0700-1900	HEAVENLY ICP
HEQB SEWELL		9/24	SEWELL	1	O-50178	0700-1900	HEAVENLY ICP
HEBQ IRWIN		10/5	IRWIN	1	O-50490	0700-1900	HEAVENLY ICP
HEBQ TRAPP		10/5	TRAPP	1	O-50491	0700-1900	HEAVENLY ICP
HEQB(T) LOZANO		9/24	LOZANO	1	O-50011	0700-1900	HEAVENLY ICP
HEQB(T) QUINN		10/4	QUINN	1	O-50497	0700-1900	HEAVENLY ICP
RAT1 (REMS)	X	10/4	HOOVER/PATTEN	2	E-50097	0700-1900	HEAVENLY ICP
EMPF CRUMPACKER	X	9/27	CRUMPACKER	1	O-50263	0700-1900	HEAVENLY ICP
EMTF FLANDERS		9/27	FLANDERS	1	O-50276	0700-1900	HEAVENLY ICP

6. Work Assignments:
 TASK: Perform priority suppression repair work within Branch 3. Coordinate closely with CALFIRE AEU and USFS REAFs, focusing efforts of hazard tree removal along Scout Peak Rd in Angora Meadow, Tahoe Mtn and Highlands
 PURPOSE: Minimize any near-term environmental resource impacts as a result of fire suppression efforts
 END STATE: Watershed and areas adjacent to values at risk are protected using the approved standard

7. Special Instructions:
 Backhaul trash, excess supplies and provide a location for accountable property
 Identify and coordinate the removal of hazard trees
 Resources denoted with * is identified as I/A resources within the TFR
 Resources need to report to Heavenly ICP (3860 Saddle Rd., South Lake Tahoe, CA 96150) for briefing and end of shift

8. Communications

Name	Ch	Function	Rx Freq	Rx Tone	Tx Freq	Tx Tone	Notes
COMMAND SEE ICS 205	1	COMMAND					
VFIRE 24	10	TACTICAL	154.272N		154.2725N		
A/G CMD	14	A/G CMD	167.9500N		167.9500N		
CALCORD	15	COORDINATION	156.0750N	156.7	156.0750N	156.7	
GUARD 16	16	EMERGENCY	168.6250N		168.6250N	110.9	

9. Prepared by: Name:	Mike Yeun, Chris Adams, Derek Acosta(T)	RESL	Signature:
ICS 204	Date/Time: 9/22/2021 2200	Personnel Count: 31	

ASSIGNMENT LIST (ICS 204 WF)

CONTROLLED UNCLASSIFIED
INFORMATION/BASIC

1. Incident Name: <p style="text-align: center;">CALDOR</p>	2. Operational Period: Date From: 09/23/21 Date To: 09/24/21 Time From: 0700 Time To: 0700	3. Branch Division <p style="text-align: center;">III Suppression Repair</p> <p style="text-align: center;">Page 3 of 3</p>
--	---	--

4. Operations Personnel: Operations Section Chief: Jim Snow, Mike Page(T) Branch Director: John Owings Division/Group Supervisor: Rob Bertolina	Night Ops: Mike Koontz, Luis Gomez(T) Deputy Ops Al Ward, Chris St Pierre(T) Air Attack: Todd White
--	--

5. Resources Assigned:		** Resources Below in Bold are 12 Hour **					
Resource Identifier	ALS	LWD	Leader	Personnel	Request #	Hours	Reporting Location
REAF BROWN			BROWN	1	O-169	0700-1900	HEAVENLY ICP
REAF VAN SANT		9/29	VAN SANT	1	O-574	0700-1900	HEAVENLY ICP
REAF DALLON		10/5	DALLON	1	O-50385	0700-1900	HEAVENLY ICP
REAF LAESKE		10/4	LAESKE	1	O-50386	0700-1900	HEAVENLY ICP
REAF LANGLEY		10/4	LANGLEY	1	O-50387	0700-1900	HEAVENLY ICP
REAF KRAJA		10/1	KARJA	1	O-50388	0700-1900	HEAVENLY ICP
REAF(T) HENDERSON			HENDERSON	1		0700-1900	HEAVENLY ICP
ARCH BONSKOWSKI		9/27	BONSKOWSKI	1	O-344	0700-1900	HEAVENLY ICP

6. Work Assignments:
 TASK: Perform priority suppression repair work within Branch 3. Coordinate closely with CALFIRE AEU and USFS REAFs, focusing efforts of hazard tree removal along Scout Peak Rd in Angora Meadow, Tahoe Mtn and Highlands
 PURPOSE: Minimize any near-term environmental resource impacts as a result of fire suppression efforts
 END STATE: Watershed and areas adjacent to values at risk are protected using the approved standard

7. Special Instructions:
 Backhaul trash, excess supplies and provide a location for accountable property
 Identify and coordinate the removal of hazard trees
 Resources denoted with * is identified as I/A resources within the TFR
 Resources need to report to Heavenly ICP (3860 Saddle Rd., South Lake Tahoe, CA 96150) for briefing and end of shift

8. Communications							
Name	Ch	Function	Rx Freq	Rx Tone	Tx Freq	Tx Tone	Notes
COMMAND SEE ICS 205	1	COMMAND					
VFIRE 24	10	TACTICAL	154.272N		154.2725N		
A/G CMD	14	A/G CMD	167.9500N		167.9500N		
CALCORD	15	COORDINATION	156.0750N	156.7	156.0750N	156.7	
GUARD 16	16	EMERGENCY	168.6250N		168.6250N	110.9	

9. Prepared by: Name:	Mike Yeun, Chris Adams, Derek Acosta(T)	RESL	Signature:
ICS 204	Date/Time: 9/22/2021 2200	Personnel Count:	8

ASSIGNMENT LIST (ICS 204 WF)

CONTROLLED UNCLASSIFIED
INFORMATION/BASIC

1. Incident Name: <p style="text-align: center;">CALDOR</p>	2. Operational Period: Date From: 09/23/21 Date To: 09/24/21 Time From: 0700 Time To: 0700	3. Branch Division <p style="text-align: center;">Night Night</p>
--	---	---


4. Operations Personnel: Operations Section Chief: Jim Snow, Mike Page(T) Branch Director: TBD Division/Group Supervisor: Jeff Corser(T)	Night Ops: Mike Koontz, Luis Gomez(T) Deputy Ops Al Ward, Chris St Pierre(T) Air Attack: Todd White
---	--

5. Resources Assigned:		** Resources Below in Bold are 12 Hour **					
Resource Identifier	ALS	LWD	Leader	Personnel	Request #	Hours	Reporting Location
ENG3 BERTHOUD 613		10/6	PRIM	3	E-50317	1900-0700	HEAVENLY ICP
ENG4 WY CAMPPELL BRUSH 2		9/29	BURTON	3	E-50221	1900-0700	HEAVENLY ICP
ENG4 PVT E411		9/29	MARTIN	3	E-50197	1900-0700	HEAVENLY ICP
ENG4 IDAHO TRAILBLAZERS		10/6	TONEY	3	E-50315	1900-0700	HEAVENLY ICP
ENG6 MT-KNF 651		9/29	BERGET	8	E-50194	1900-0700	HEAVENLY ICP
ENG6 R04 311		9/29	TURNER	3	E-50200	1900-0700	HEAVENLY ICP
ENG6 BELLEVUE		9/30	ARENAS	2	E-50214	1900-0700	HEAVENLY ICP
ENG6 BLM AZ E3664		9/29	HINDMAN	7	E-50216	1900-0700	HEAVENLY ICP
ENG6 AZ-PNF E952		9/29	BADGER	7	E-50217	1900-0700	HEAVENLY ICP
ENG6 CONGAREE NP E632		10/6	JOHNSON	4	E-50313	1900-0700	HEAVENLY ICP
STEN(T) WHITE		9/29	WHITE	1	E-50221.1	1900-0700	HEAVENLY ICP
SOFR BALAO		10/5	BALAO	1	O-50528	1900-0700	HEAVENLY ICP
SOFR(T) ARIOLA		10/5	ARIOLA	1	O-50481	1900-0700	HEAVENLY ICP
MEDIC 2	X	9/29	ANDERSON/ANTONELLI	2	E-20593	1900-0700	HEAVENLY ICP

6. Work Assignments:
 TASK: Engage in perimeter control efforts north of Caples Lake to Scout Peak, perform tactical patrol, respond to service calls and mitigate any isolated heat sources within the fire perimeter where safe to do so
 PURPOSE: Minimize any fire progression, keeping the fire within its current footprint
 END STATE: Fires edge is controlled and escape is improbable

7. Special Instructions:
 Resources denoted with * is identified as I/A resources within the TFR
 Resources need to report to Heavenly ICP (3860 Saddle Rd., South Lake Tahoe, CA 96150) for briefing and end of shift

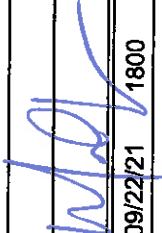
8. Communications							
Name	Ch	Function	Rx Freq	Rx Tone	Tx Freq	Tx Tone	Notes
COMMAND SEE ICS 205	1	COMMAND					
VFIRE 25	11	TACTICAL	154.2875N	156.7	154.2875N	156.7	
A/G CMD	14	A/G CMD	167.9500N		167.9500N		
CALCORD	15	COORDINATION	156.0750N	156.7	156.0750N	156.7	
GUARD 16	16	EMERGENCY	168.6250N		168.6250N	110.9	

9. Prepared by: Name: Mike Yeun, Chris Adams, Derek Acosta(T) RESL Signature: 

ICS 204 Date/Time: 9/22/2021 2200 Personnel Count: 48

ICS 205 - INCIDENT RADIO COMMUNICATIONS PLAN

CONTROLLED UNCLASSIFIED
INFORMATION/BASIC

1. Incident Name: CALDOR EAST Z3		2. Date/Time Prepared Date: 09/22/2021 Time: 1800		3. Operational Period: Date To: 09/24/21 Time To: 0700				
4. Communications								
Ch#	Function	Name	Assigned To	Rx Freq	Rx Tone	Tx Freq	Tx Tone	Notes
1	COMMAND	CMD 5	EAST BRANCHES	169.7500N	146.2	167.1000N	146.2	MONUMENT PK LINKED W/ C67,C93,C96
2	COMMAND	CMD 93	EAST BRANCHES	166.6875N	146.2	162.9375N	146.2	SCOUT LINKED W/C5,C67,C96
3	COMMAND	CMD 67	EAST BRANCHES	172.0750N	146.2	162.2000N	146.2	KIRKWOOD MT,LINKED W/C5,C93,C96
4	COMMAND	CMD 96	EAST BRANCHES	169.9625N	146.2	165.0500N	146.2	PYRAMID PEAK LINKED W/C5,C93,C67
5	COMMAND	CMD 56	WEST BRANCHES	172.3500N	114.8	163.0375N	114.8	MONUMENT PK LINK TO WEST
6	TACTICAL	NIFC T1	DIV I/M	168.0500N		168.0500N		
7	TACTICAL	NIFC T6	DIV O/P	166.7750N		166.7750N		
8	TACTICAL	NIFC T3	DIV Q	168.6000N		168.6000N		
9	TACTICAL	NIFC T7	DIV R	168.2500N		168.2500N		
10	TACTICAL	VFIRE 24	FIRE SUPP.REPAIR	154.2725N	156.7	154.2725N	156.7	
11	TACTICAL	VFIRE 25	NIGHT OPS	154.2875N	156.7	154.2875N	156.7	
12	A/G CMD	A/G CMD	ALL BRANCHES	167.9500N		167.9500N		
13	A/G TAC	A/G TAC	A/G BUCKETS	166.6125N		166.6125N		
14	A/G TAC	A/G TAC2	A/G LOGS	169.2875N		169.2875N		
15	COORDINATION	CALCORD	ALL BRANCHES	156.0750N	156.7	156.0750N	156.7	MEDICAL COORDINATION
16	EMERGENCY	GUARD 16	ALL BRANCHES	168.6250N		168.6250N	110.9	EMERGENCY USE ONLY
17								
18								
19								
20	EMERGENCY	GUARD 16	ALL BRANCHES	168.6250N		168.6250N	110.9	EMERGENCY USE ONLY
EAST COMMUNICATION 208-850-8987								
6. Prepared by: Name: MIKE GREENE COML			Signature: 					
			Date/Time: 09/22/21 1800					

ICS 205 - INCIDENT RADIO COMMUNICATIONS PLAN

CONTROLLED UNCLASSIFIED
INFORMATION/BASIC

1. Incident Name: CALDOR WEST Z1		2. Date/Time Prepared Date: 09/22/2021 Time: 1800		3. Operational Period: Date To: 09/24/21 Time To: 0700				
4. Communications								
Ch#	Function	Name	Assigned To	Rx Freq	Rx Tone	Tx Freq	Tx Tone	Notes
1	COMMAND	CMD 109	WEST BRANCHES	170.3875N	114.8	162.1750N	114.8	BIG HILL
2	COMMAND	CMD 104	WEST BRANCHES	170.7625N	114.8	165.6250N	114.8	NORTH OF HWY 50 BETWEEN DP 21 AND DP 24
3	COMMAND	CMD 1	WEST BRANCHES	170.9750N	114.8	168.7000N	114.8	LEEK SPRINGS
4	COMMAND	CMD 11	WEST BRANCHES	170.6875N	114.8	166.575N	114.8	GRIZZLY FLATS AREA
5	COMMAND	CMD 113	WEST BRANCHES	170.3125N	114.8	165.6750N	114.8	KIRKWOOD MOUNTAIN
6	COMMAND	CMD 116	WEST BRANCHES	171.0375N	114.8	162.5875N	114.8	SIERRA SKI RESORT
7	TACTICAL	VTAC 13		158.7375N	156.7	158.7375N	156.7	
8	TACTICAL	NIFC T1	DIV G/T/W	168.0500N		168.0500N		
9	TACTICAL	NIFC T6	FIRE SUPP.REPAIR	166.7750N		166.7750N		
10	TACTICAL	NIFC T3		168.6000N		168.6000N		
11	TACTICAL	NIFC T7		168.2500N		168.2500N		
12	A/G CMD	A/G CMD	ALL BRANCHES	167.9500N		167.9500N		AIR TO GROUND
13	A/G TAC	A/G TAC	A/G BUCKETS	166.6125N		166.6125N		
14	A/G TAC	A/G TAC2	A/G LOGS	169.2875N		169.2875N		
15	MEDICAL	CALCORD	ALL BRANCHES	156.0750N	156.7	156.0750N	156.7	EMS COORDINATION ONLY
16	EMERGENCY	GUARD 16	ALL BRANCHES	168.6250N		168.6250N	110.9	EMERGENCY USE ONLY
17								
18								
19								
20	EMERGENCY	GUARD 16	ALL BRANCHES	168.6250N		168.6250N	110.9	EMERGENCY USE ONLY


5. Special Instructions

CALDOR COMMUNICATION ICP HEAVENLY 208-850-8987

6. Prepared by (Communications Unit Leader): Name: MIKE GREENE COML	Signature: 
ICS 205 - CONTROLLED UNCLASSIFIED INFORMATION/BASIC	Date/Time: 09/22/2021 1800

ICS 205 - INCIDENT RADIO COMMUNICATIONS PLAN

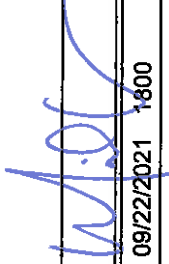
CONTROLLED UNCLASSIFIED
INFORMATION/BASIC

1. Incident Name: TAHOE BASIN I/A		2. Date/Time Prepared Date: 09/22/21 Time: 1800		3. Operational Period: Date From: 09/23/21 Time From: 0700		Date To: 09/24/21 Time To: 0700		
4. Communications								
Ch#	Function	Name	Assigned To	Rx Freq	Rx Tone	Tx Freq	Tx Tone	Notes
1	FOREST NET	ENF T9	ALL DIVS	171.5250N	156.7	162.7500N	T9-100.0	HAWKINS PK
2	FOREST NET	TMU T2	ALL DIVS	172.3750N	156.7	164.9625N	T2-123.0	EAST PK
3	FOREST NET	HTF T3	ALL DIVS	173.7750		165.7500N	T3-131.8	HAWKINS PK
4	TACTICAL	NIFC T1	ALL DIVS	168.0500N		168.0500N		
5	TACTICAL	NIFC T2	ALL DIVS	168.200N		168.200N		
6	TACTICAL	R5T4	ALL DIVS	166.5500N		166.5500N		
7	TACTICAL	R5T5	ALL DIVS	167.1125N		167.1125N		
8	TACTICAL	VFIRE22	ALL DIVS	154.2650N	156.7	154.2650N	156.7	
9	TACTICAL	VFIRE23	ALL DIVS	154.2950N	156.7	154.2950N	156.7	
10	TACTICAL	VFIRE 26	ALL DIVS	154.3025N	156.7	154.3025N	156.7	
11	TACTICAL	CCD SOA	ALL DIVS	171.6750N		171.6750N		AKA" BLM SOA"
12	TACTICAL	NDF RED 1	ALL DIVS	159.3450N		159.3450N		
13	AIR TO GROUND	A/G 14	ALL DIVS	167.5000N		167.5000N		I/A A/G-ENF/TMU
14	AIR TO GROUND	A/G 51	ALL DIVS	168.3125N		168.3125N		I/A A/G-SIERRA FRONT
15	MEDICAL	CALCORD	ALL DIVS	156.0750N	156.7	156.0750N	156.7	MEDICAL COORDINATION
16	EMERGENCY	GUARD	EMERGENCY	168.6250N		168.6250N	110.9	EMERGENCY CONTACT
17								
18								
19								
20	EMERGENCY	GUARD	EMERGENCY	168.6250N		168.6250N	110.9	EMERGENCY CONTACT
5. Special Instructions								
6. Prepared by (Communications Unit Leader): Name: MIKE GREENE								Signature: 
ICS 205 - CONTROLLED UNCLASSIFIED INFORMATION//BASIC								Date/Time: 09/22/21 1800

NIMS IAP

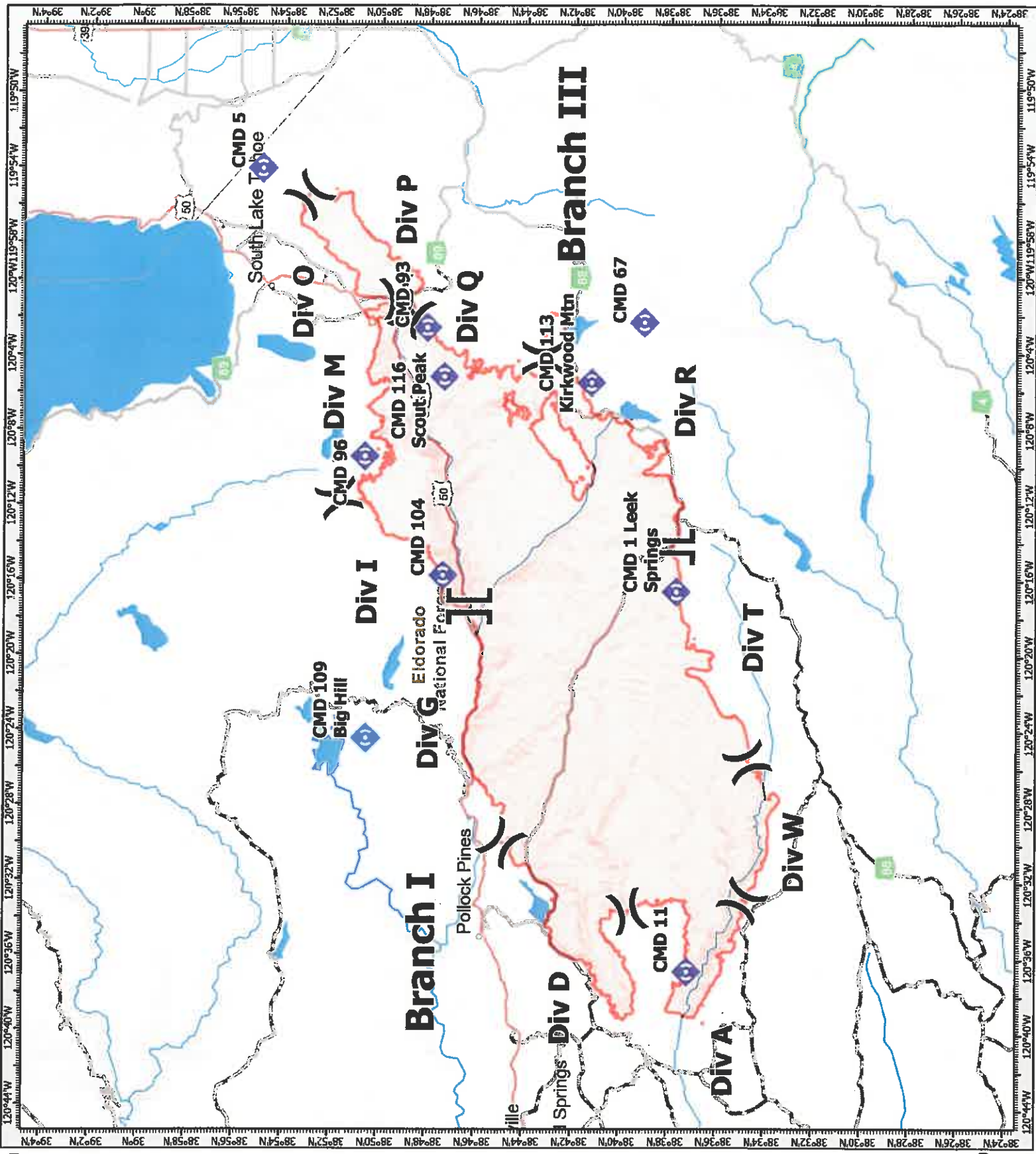
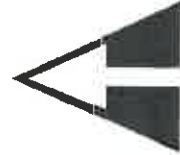
ICS 205 - INCIDENT RADIO COMMUNICATIONS PLAN

CONTROLLED UNCLASSIFIED
INFORMATION//BASIC

1. Incident Name: ENF/AEU INITIAL ATTACK ONLY		2. Date/Time Prepared Date: 09/22/2021 Time: 1800		3. Operational Period: Date From: 09/23/21 Time From: 0700 Date To: 09/24/21 Time To: 0700				
4. Communications								
Ch#	Function	Name	Assigned To	Rx Freq	Rx Tone	Tx Freq	Tx Tone	Notes
1	COMMAND	ENFADM 1		172.3250N	156.7	165.2250N	110.9	FOREST ADMIN Tone 1-Alder
2	COMMAND	ENFADM 2		172.3250N	156.7	165.2250N	123.0	FOREST ADMIN Tone 2-Leek Springs
3	COMMAND	ENFADM 4		172.3250N	156.7	165.2250N	136.5	FOREST ADMIN Tone 4-Big Hill
4	COMMAND	ENFADM 6		172.3250N	156.7	165.2250N	156.7	FOREST ADMIN Tone 6-Echo Summit
5	COMMAND	XAM CT10		154.7625N	123.0	159.1800N	107.2	AMADOR CMD Tone 10-Leek Springs
6	COMMAND	XAM CT11		154.7625N	123.0	159.1800N	114.8	AMADOR CMD Tone 11-Zion Mountain
7	COMMAND	XED CT11		155.9025N	186.2	159.2775N	114.8	EL DORADO CMD Tone 11-Union
8	COMMAND	XED CT1		155.9025N	186.2	159.2775N	110.9	EL DORADO CMD Tone 1-Alder
9	COMMAND	XED CT4		155.9025N	186.2	159.2775N	136.5	EL DORADO CMD Tone 4-Big Hill
10	TACTICAL	R5 T4		166.5500N		166.5500N		REGION 5 TAC 4
11	TACTICAL	R5 T5		167.1125N		167.1125N		REGION 5 TAC 5
12	TACTICAL	R5 T6		168.2375N		168.2375N		REGION 5 TAC 6
13	TACTICAL	CDF T2		151.1600N	192.8	151.1600N	192.8	
14	TACTICAL	CDF T8		151.3700N	192.8	151.3700N	192.8	
15	AIR TO GROUND	A/G TAC	AIR TO GROUND	164.1375N		164.1375N		
16	EMERGENCY	GUARD 8	EMERGENCY	168.6250N		168.6250N	110.9	
17								
18								
19								
20	EMERGENCY	GUARD 8	EMERGENCY	168.6250N		168.6250N	110.9	
5. Special Instructions								
6. Prepared by (Communications Unit Leader): Name: MIKE GREENE			Signature: 					
ICS 205 - CONTROLLED UNCLASSIFIED INFORMATION//BASIC			Date/Time: 09/22/2021 1800					



- Division Break
- Branch Break
- Repeater
- Wildfire Daily Fire Perimeter



AIR OPERATIONS SUMMARY

PREPARED BY: JoAnn Overacker (AOBD)

PREPARED DATE - TIME: 09/22/21 - 1800

1. INCIDENT NAME: Calder	2. OPERATIONAL PERIOD DATE: 9/23/21	START: 0700	END: 2000	SUNRISE: 0648	SUNSET: 1854
3. REMARKS (Safety Notes, Hazards, Air Operations Special Equipment, etc.) Lake Tahoe Airport is open to GA, coordinate traffic with Tower. Track total gallons pulled per Dip Site and note on Helicopter Cost Summary. Ensure Covid precautions are exercised at Helibase					
4. MEDEVAC A/C: H-5PT for Type II H-873 Hoist NVG See Medical Plan			5. TFR: Radius: Altitude: Center: Frequency: 118.6250		

6. PERSONNEL	Phone	7. FREQUENCIES		8. FIXED-WING	# Avail/Type/ Make-Model/ FAA N# / Base(s)
AOBD: JoAnn Overacker	209-559-1617	AIR/AIR FW:	118.6250	Airliners	As Ordered: AA
ASGS(t): Rex Sundstrom	530-575-0368	AIR/AIR RW:	133.0250	Lead Planes	As Ordered
HEBM: Cammie Roy	907-750-6620	AIR TACTICS:	163.3375	ATGS Aircraft	As Ordered
HEBM(t): Scott Magargee	205-335-4932	A/G CMD:	167.9500	ATGS(Night)	As Ordered
		A/G Buckets:	166.6125		
ATGS: Todd White	530-263-5621	A/G Cargo/Recon:	169.2875		
HLCO: Jed Smith	530-307-9171	DECK:	163.1000		
		TVL TEMP Tower:	127.1250		
		CALCORD:	156.0750		
		GUARD 16:	168.6250		

9. HELICOPTERS (Use Additional Sheets As Necessary)

FAA N#	Type	MAKE/MODEL	BASE	AVAIL	START	REMARKS	FAA N#	Type	MAKE/MODEL	BASE	AVAIL	START	REMARKS
3TH	I	UH-60	Tahoe	0800	0700	Bucket - EU	H-516	II	Bell 212	Pacific	0800	0700	Bucket - EU
8CH	I	CH-47	Tahoe	"	"	Bucket - EU							
5HT	I	CH-54	Tahoe	"	"	Tank - EU							
1BH	I	UH-60	Tahoe	"	"	Bucket - CWN							
5PT	II	Bell 205++	Tahoe	"	"	Bucket - EU							
69H	II	Bell 205++	Tahoe	"	"	Rappel - EU							
4HX	III	Bell 407	Tahoe	"	"	EU							
5AE	III	A-Star 350	Tahoe	"	"	EU							
509	III	Cobra	Tahoe	"	"	Down Mechanical							

MEDICAL PLAN (ICS 206 WF) CIIMT 12

1. Incident Name				2. Operational Period							
CALDOR INCIDENT				Date/Time: 09/23/2021 – 09/24/2021 (24 hours)							
3. EMS / Ambulance Services/Aid Stations											
Name		Location		Frequency/Phone		Advanced Life Support (ALS) Yes No					
MEDICAL UNIT		ICP		805-813-3858 909-908-4778		X					
EL DORADO		CAMINO ECC SLT DISPATCH		530-647-5220 530-542-6148		X					
AMERICAN LEGION		CAMINO ECC SLT DISPATCH		530-647-5220 530-542-6148		X					
4. Air Rescue / Air Ambulance Services											
Name		Phone		Type of Aircraft & Capability							
GUARD 873		CAMINO ECC 530-647-5220		HELICOPTER, ALS, 24/7 - HOIST							
CAREFLIGHT		CAMINO ECC 530-647-5220		AIR AMBULANCE ALS – NO HOIST							
CALSTAR 6		CAMINO ECC 530-647-5220		AIR AMBULANCE ALS – NO HOIST							
5. Hospitals (all times estimated from incident location)											
Name & Level		GPS Datum – WGS 84 Degrees Decimal Minutes		Travel Time Air Gnd		Phone		Helipad Yes No		Address	
BARTON MEMORIAL HOSPITAL (LEVEL 3)		Lat:	N 38° 54.72'		2 MIN	5 MIN	530-541-3420	X		2170 South Ave. South Lake Tahoe, CA 96150	
		Long:	W 119° 59.72'								
RENOWN REGIONAL MEDICAL CENTER (LEVEL 2)		Lat:	N 39° 31.51'		20 MIN	1.5 HRS	775-982-2005	X		1156 Mill St Reno, NV 89502	
		Long:	W 119° 47.75'								
SUTTER ROSEVILLE MEDICAL CENTER (LEVEL 2)		Lat:	N 38° 45.97'		45 MIN	3 HRS	916-781-1200	X		1 Medical Plaza Dr. Roseville, CA 95661	
		Lat:	W 121° 14.87'								
UC DAVIS MEDICAL CENTER (LEVEL 1 TRAUMA/BURN)		Lat:	N 38° 33.32'		45 MIN	3 HRS	916-703-6576	X		2315 Stockton Blvd. Sacramento, CA 95817	
		Long:	W 121° 27.35'								
6. Division / Crew Emergency Pre-Plan								<i>Update and discuss with assigned resources daily.</i>			
Fireline EMT / Medic's Division / Branch Location											
Air Hoist site location site: Lat: / Long: / Elevation:											
Helispot: Lat: / Long: / Elevation:											
7. Prepared By (Medical Unit Leader)				8. Date/Time		9. Reviewed By (Safety Officer)		10. Date/Time			
MEDL NICK STEPANIAN 909-908-4778 MEDL BRANDON BENNEWATE 805-813-3858 <i>Brandon Bennenwate</i>				09/22/2021 1600		SOF2 PAUL TOMPKINS 619-889-7533 <i>Paul Tompkins</i>		09/22/2021 1600			

MEDICAL PLAN (ICS 206 WF) CIIMT 12

Medical Incident Report																													
<p>FOR A NON-EMERGENCY INCIDENT, WORK THROUGH CHAIN OF COMMAND TO REPORT AND TRANSPORT INJURED PERSONNEL AS NECESSARY.</p> <p>FOR A MEDICAL EMERGENCY: IDENTIFY ON SCENE INCIDENT COMMANDER BY NAME AND POSITION AND ANNOUNCE "MEDICAL EMERGENCY" TO INITIATE RESPONSE FROM IMT COMMUNICATIONS/DISPATCH.</p>																													
<p>Use the following items to communicate situation to communications/dispatch.</p>																													
<p>1. CONTACT COMMUNICATIONS / DISPATCH (Verify correct frequency prior to starting report) <i>Ex: "Communications, Div. Alpha. Stand-by for Emergency Traffic."</i></p>																													
<p>2. INCIDENT STATUS: Provide incident summary (including number of patients) and command structure. <i>Ex: "Communications, I have a Red priority patient, unconscious, struck by a falling tree. Requesting air ambulance to Forest Road 1 at (Lat./Long.) This will be the Trout Meadow Medical, IC is TFLD Jones. EMT Smith is providing medical care."</i></p>																													
Severity of Emergency / Transport Priority	<input type="checkbox"/> RED / PRIORITY 1 Life or limb threatening injury or illness. Evacuation need is IMMEDIATE <i>Ex: Unconscious, difficulty breathing, bleeding severely, 2° - 3° burns more than 4 palm sizes, heat stroke, disoriented.</i> <input type="checkbox"/> YELLOW / PRIORITY 2 Serious Injury or illness. Evacuation may be DELAYED if necessary. <i>Ex: Significant trauma, unable to walk, 2° - 3° burns not more than 1-3 palm sizes.</i> <input type="checkbox"/> GREEN / PRIORITY 3 Minor Injury or illness. Non-Emergency transport <i>Ex: Sprains, strains, minor heat-related illness.</i>																												
Nature of Injury or Illness & Mechanism of Injury			Brief Summary of Injury or Illness <i>(Ex: Unconscious, Struck by Falling Tree)</i>																										
Transport Request			Air Ambulance / Short Haul/Hoist Ground Ambulance / Other																										
Patient Location			Descriptive Location & Lat. / Long. <i>(WGS84)</i>																										
Incident Name			Geographic Name + "Medical" <i>(Ex: Trout Meadow Medical)</i>																										
On-Scene Incident Commander			Name of on-scene IC of Incident within an Incident <i>(Ex: TFLD Jones)</i>																										
Patient Care			Name of Care Provider <i>(Ex: EMT Smith)</i>																										
<p>3. INITIAL PATIENT ASSESSMENT: Complete this section for each patient as applicable (start with the most severe patient)</p> <p>Patient Assessment: See IRPG PAGE 106</p>																													
Treatment:																													
<p>4. TRANSPORT PLAN:</p> <p>Evacuation Location (if different): <i>(Descriptive Location (drop point, intersection, etc.) or Lat. / Long.)</i> Patient's ETA to Evacuation Location:</p>																													
Helispot / Extraction Site Size and Hazards:																													
<p>5. ADDITIONAL RESOURCES / EQUIPMENT NEEDS:</p> <p><i>Example: Paramedic/EMT, Crews, Immobilization Devices, AED, Oxygen, Trauma Bag, IV/Fluid(s), Splints, Rope rescue, Wheeled litter, HAZMAT, Extrication :</i></p>																													
<p>6. COMMUNICATIONS: Identify State Air/Ground EMS Frequencies and Hospital Contacts as applicable</p> <table border="1" style="width: 100%; border-collapse: collapse;"> <thead> <tr> <th style="width: 10%;">Function</th> <th style="width: 20%;">Channel Name/Number</th> <th style="width: 15%;">Receive (RX)</th> <th style="width: 15%;">Tone/NAC *</th> <th style="width: 15%;">Transmit (TX)</th> <th style="width: 15%;">Tone/NAC *</th> </tr> </thead> <tbody> <tr> <td>COMMAND</td> <td></td> <td></td> <td></td> <td></td> <td></td> </tr> <tr> <td>AIR-TO-GRND</td> <td></td> <td></td> <td></td> <td></td> <td></td> </tr> <tr> <td>TACTICAL</td> <td></td> <td></td> <td></td> <td></td> <td></td> </tr> </tbody> </table>						Function	Channel Name/Number	Receive (RX)	Tone/NAC *	Transmit (TX)	Tone/NAC *	COMMAND						AIR-TO-GRND						TACTICAL					
Function	Channel Name/Number	Receive (RX)	Tone/NAC *	Transmit (TX)	Tone/NAC *																								
COMMAND																													
AIR-TO-GRND																													
TACTICAL																													
<p>7. CONTINGENCY: Considerations: If primary options fail, what actions can be implemented in conjunction with primary evacuation method? Be thinking ahead..</p>																													
<p>8. ADDITIONAL INFORMATION: Updates/Changes, etc. .</p>																													
<p>REMEMBER: Confirm ETA's of resources ordered. Act according to your level of training. Be Alert. Keep Calm. Think Clearly. Act Decisively..</p>																													

Fire and COVID-19 Briefing Checklist

Self-Awareness / Screening

- **Notify** supervisor if you or others experience:
 - Cough, more than expected
 - Difficulty breathing
 - Loss of taste or smell
 - Fever
 - Chills
 - Sore throat
 - Muscle pain
- **Immediately separate** yourself from others.
- Follow crew and division plans to isolate, triage, and transport symptomatic personnel.

Hygiene on the Fireline

- Properly wash or sanitize your hands often
- Avoid handshakes and communal use items
- Inform supervisor of needed resupply.
- Disinfect high touch surfaces often

Social distancing and protective equipment

- Practice social distancing
- Conduct briefings in conversations outdoors and at least SIX feet apart
- Utilize face coverings
- Clean or replace dirty face coverings, equipment, and PPE

Communications

- Ensure effective sender/receiver messaging.
- Protect yourself, your crew, and your camp!

Any questions contact:

BARTON HEALTH COVID HOTLINE: 530-600-1999

MEDL Brandon Bennewate @ (805) 813-3858

MEDL Nick Stepanian @ (909) 908-4778

FEDERAL EMPLOYEES AND CONTRACTORS

EXTRACT FROM Secretary Vilsack and Deputy Secretary Bronaugh

Thank you to the tens of thousands of USDA employees who have already been fully vaccinated. For those of you who still need to be vaccinated, below are interim deadlines that will ensure you are two weeks from your last dose and thus fully vaccinated by the Nov. 22nd deadline. You can visit [vaccines.gov](https://www.vaccines.gov) to find a COVID-19 vaccine near you and learn more about the [benefits of vaccinations](#).

- **Oct. 11:** First dose deadline (Moderna COVID-19 vaccine)
- **Oct. 18:** First dose deadline (Pfizer COVID-19 vaccine)
- **Nov. 8:** Second dose deadline (Moderna and Pfizer vaccine)
- **Nov. 8:** First (only) dose deadline (Johnson and Johnson COVID-19 vaccine)
- **Nov. 22:** Federal employees must be fully vaccinated

Please be aware that USDA employees will be required to provide more information about vaccine status, including proof of vaccination. In the coming days, Pandemic Coordinators will be following up with their agency or staff office regarding how we will collect this information in a way that maintains privacy while also meeting new federal reporting requirements.

If interested, please reach out to COVID Advisors

East Caldor

Ben Gray 619-971-3808

Greg Flory 530-721-5975

West Caldor

Christina Bui 503-702-3050

Darrious Truss 678-577-4807



FINANCE MESSAGE

Fire Name: Caldor Fire
Fire Number: CA-ENF-024030
Accounting Code: P5N8GM21
Email: 2021.caldor.finance@firenet.gov
Hotline: 530-330-5450

If you were originally ordered on a CALFIRE contract and have not submitted a VIPR contract and RO or received an EERA (Fed contract) – CONTACT FINANCE TODAY you might not get paid.

Finance Documents Needed upon “Check In” (If Not Already Submitted):

Please email these documents or scan the QR Code below, attach & submit.			
Agency Equipment/ Crews: <ul style="list-style-type: none"> Manifest - showing employment type (GS or WG) or AD rates if applicable 	Overhead: <ul style="list-style-type: none"> AD/Casual Hire Form If regular Agency please ensure “GS” or “WG” is written on your first CTR 	Contract Equipment/ Contract Crews: <ul style="list-style-type: none"> Agreement Manifest Resource Order Inspections 	Cooperator: <ul style="list-style-type: none"> Cooperative Agreement Resource Order

Please submit your CTR/Shift Tickets using the QR code or email address below:

Don’t Forget to put your RO # on your CTR/Shift Ticket – final travel CTR’s must be signed by supervisor on incident - Thank You

Please Include the Word “Equipment” for Federal Equipment or “Time” for Federal Overhead & Crews in the Subject Line of the Email



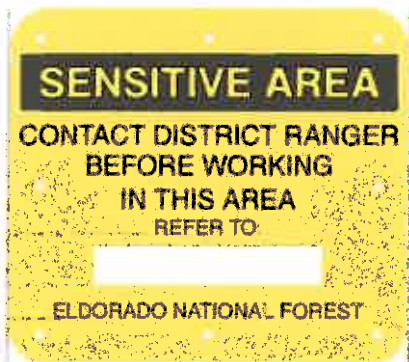
Resource Advisor Update

Avoidance areas for cultural and sensitive resources are being flagged within Divisions. If work needs to occur in areas identified by the following flagging/placard, please contact a REAF assigned to your Branch.

Avoidance Areas

Eldorado NF

**Pink/Black Checkered Flagging
and yellow placards**



LTBMU / Humboldt-Toiyabe NF

**Yellow and Green Paired
Flagging**

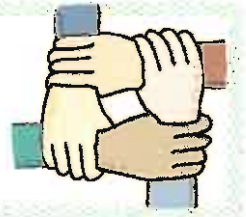


Eldorado NF Lead READ – Jen House

Lake Tahoe Basin Lead READ – Emma Williams



Human Resource Message



Our time is getting shorter... How about our Tempers???

We can see the end in sight, although this has been an uncertainty for a while. Some are ready to leave; some are wishing it was longer.

With the hard work and especially the changes taking place, it is easy to get on edge and "on the edge" with each other. Let's guard against that, and try to help each other out.

A quick temper will make a fool of you soon enough.

~Bruce Lee

Have a great shift!

Adrian Escobedo, HRSP 530-523-3804

Caldor Fire

September 23rd 2021

To receive training credit for the *Caldor Fire*

- ◆ Email me your Completed 225 Eval's
- ◆ Fill out the online exit interview
(QR code attached)
- ◆ Trainee's home unit
mailing address
- ◆ Evaluator's home unit
job title and name
- ◆ Position Task Book
Tasks sign-off

One day prior to demob, please start the close out procedures with us. We are working remotely and will do our best to answer any questions you may have. Please call or email me with your questions.

Thanks for your cooperation.

Morgan Madruga
TRAINING SPECIALIST TRAINEE
Merced Fire Department
99 E 16th st Merced, Ca 95340
209-386-2731
MorganMadruga@yahoo.com



Online Training Check-in



TNSP - Evaluation of Trainer

VIRTUAL DEMOBILIZATION

Please follow the steps below in order:

1. Scan the QR code and select the “REMOTE DEMOB” item. PLEASE DO NOT complete this step more than 12 hours prior to your demobilization
2. Complete the questionnaire
3. Go to Weed Wash if your vehicle has been on the fireline
4. Go to Ground Support for your post-inspection
5. Return items checked out from Supply
6. Return any items checked out in Comms
7. Go to Finance at the scheduled time to close out your CTR/Shift Tickets
8. Call Demob at 435-840-5432 to finalize your travel times.

PLEASE NOTE:

If you have any problems, contact Jan either by phone

435-840-5432 or at DMOB



TENTATIVE DEMOBS FOR THURSDAY, SEPTEMBER 23, 2021

REVISED 09/22 @ 1600

CREWS

TIME	RO #	RESOURCE NAME	ITEM CODE
0630	C-50020	EL DORADO IHC	HC1
0700	C-50001	TALLAC IHC	HC1
0730	C-50016	SAFFORD AZ-GID	HC1

EQUIPMENT

TIME	RO #	RESOURCE NAME	ITEM CODE
0630	E-688	DAVIS CORP	EXCA
0645	E-50213	EKD-1443	ENG4
0700	E-686	STOX	EXCA
0715	E-20720	ALS PREMIER	AMBU

OVERHEAD

TIME	R O #	RESOURCE NAME	ITEM CODE
0715	O-50207	CHRIS RENSHAW	RAD0
0730	O-526	GEORGE GUSSES	THSP
0745	O-542	NANCY JO NORDENSTEN	DOCL
0800	O-50189	DARREN LONG	FACL
0815	O-50215	HAROLD FLORY	THSP
0915	O-50258	DAVID MAGARGEE	HEBM
0930	O-50169	PAUL TADLOCK	SOF2
0945	O-545	BRIAN WARD	TFLD
1000	O-541	BEN GOTTS	HEQB(T)

Hotel Acquisition Process

The Caldor incident has authorized the individual procurement of hotel accommodations. This is for lodging only. The process below discusses financial procedure and documentation:

If you are a **local agency dispatched through CFAA**, you will need to acquire an S# prior to demob. This number will also be entered on your F42 form.

Federal resources with a travel card will be processed through your agency's travel reimbursement process. Finance will provide a 213 with approval statement upon demob, if required by your agency.

All other non-federal resources, or federal resources that do not have purchasing capability, complete the following:

AD's who are able to pay and get reimbursed for travel will need to pay lodging and get reimbursed through your normal reimbursement process. You will be given a 213 with authorization statement from the finance section during demob.

For AD's and Seasonal Federal Employees who are unable to pay for lodging, the buying team may be able to assist with purchasing your accommodations. Inquire with the incident Finance Section. Federal resources who have the crew boss card option should use this as a first option.

In accordance with each individual contract, **contractors** shall pay for lodging and submit receipts for additions to your invoice (OF-286). Itemized receipts ARE required by the finance section during demob. Also, please note that double occupancy may be required on many contracts.

The finance section will provide S#'s during your demob or sooner.

If you're not in one of these categories or uncertain, finance can help you check. Please use the hotline number: 530-330-5450 or email 2021.Caldor.finance@firenet.gov. If emailing include your resource number, type of resource and contact phone number.

West side, Branch 1: Accommodations

Resources working the *west* side of the incident and briefing at the El Dorado Fairgrounds are expected to be self-sufficient for dinners and hotel accommodations. Breakfast, sack lunches, and hydration products will be provided at briefing. There is no need to return to the fairgrounds until the next briefing unless you need additional support services.

East side, Branch 3: All meals provided by the incident. To Acquire lodging:

Harvey's hotel is associated with Harrah's. They are across the street from each other and are joined by a tunnel under Hwy 50 on the Nevada side at the state line. They have opened the Harvey's hotel specifically for firefighters battling the Caldor fire. No public is staying at that property. **Hotel support and check in for Harvey's Hotel, including front desk services is located at the Harrah's property.** This includes check-in and any maintenance service. Large vehicle parking is at the large parking lot at Harrah's accessible off Lake Parkway. Small vehicles can access the parking structure at Harvey's. At both locations, collect the parking stub to go through the gate. There is no charge for parking. Exit gates will open from 0500 to 0700. You may still use your hotel card or ring for attendant to open the exit gate if needed.

To reserve a room, scan this code to make your reservation. Be sure to have your purchase card and crew manifest ready to enter the names of the personnel for each room configuration purchased with that card:



After reserving, go to the Harrah's front desk and complete registration. They are very understaffed, so please make every attempt to use the web link above to reserve, though you may also call the hotel desk at 775-691-0416 to reserve your room under "Caldor Fire".

Once you check in to the hotel on the Harrah's side, you will then proceed to Harvey's either through the underground tunnel or drive to the Harvey's parking structure. Note: the elevator bank closest to the (currently closed) Harvey's front desk is not in service for ascending (Descending works). You will need to use the Mountain Tower elevator bank by the arcade.

The hotel asks that if you would like trash pickup, please place your trash bags in the hallway and call the front desk to let them know where it is. They don't have enough staff to patrol the halls. They are also available to clean rooms and deliver towels and other items, but you will need to call the front desk for that as well.

ICP LOGISTICS NOTES

Supply: 0600-2100

Ordering: 0600-2100

Communications: 24/7 Techs: 0600-2100

Food: Breakfast: 0600-0930

Dinner: 1800-2130

Refer Trailer: 0600-2100

Showers: 0500-1300 & 1500-2200

Laundry service: 0500-2200

Ground Support: 0600-2200

Mechanic: 0600-2200

Weed Wash: 0600-1200 1300-2200

Fuel: 0600-1100 and 1400-2200

Medical: 24/7

-Barton Clinic: 0630-0930

-COVID testing: M-F 0600-1200

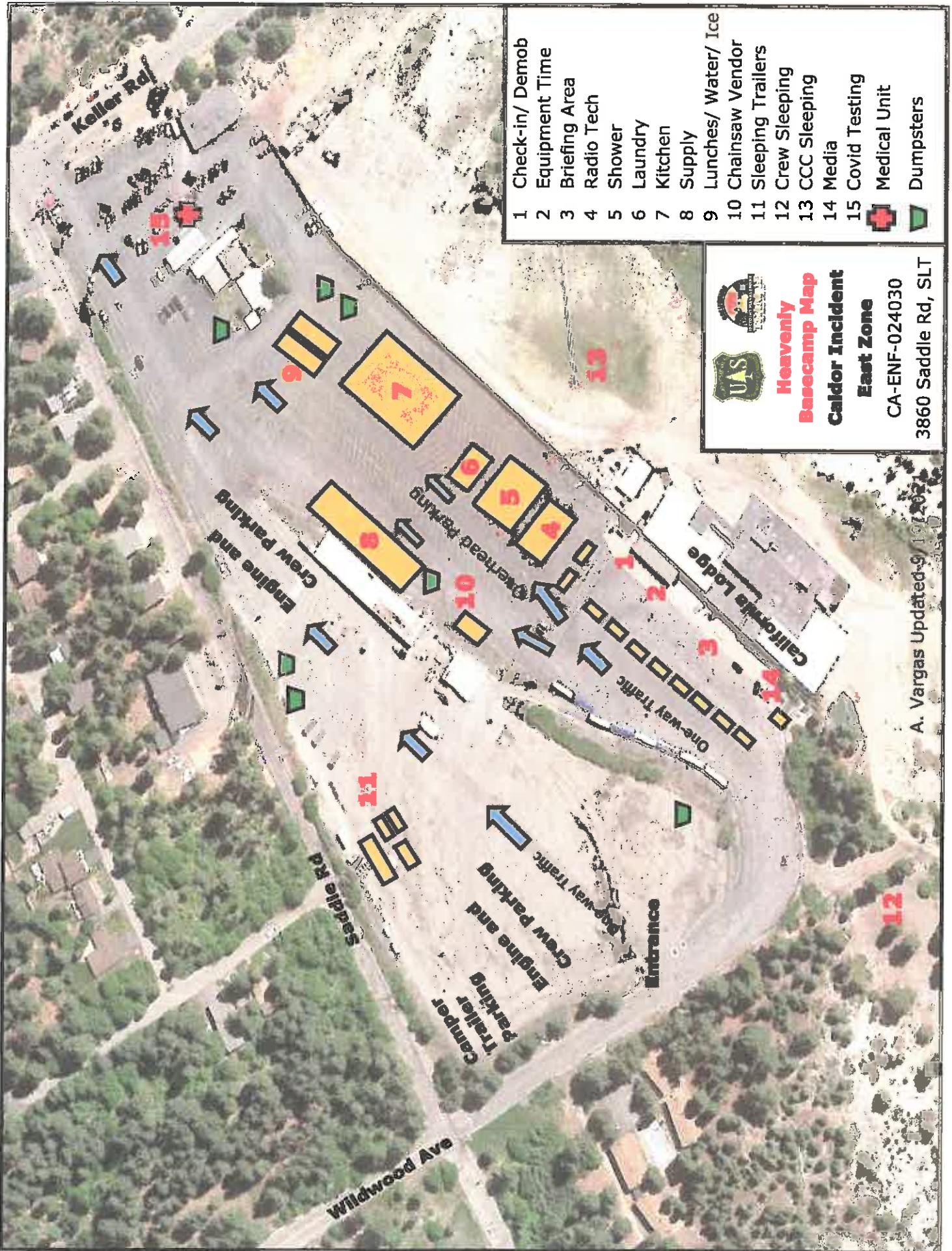
-Mobile Medical Supply Trailer: M-Su 0600-2200



PLEASE DO:

- Only drive ONE WAY in camp.
- Put trash in the dumpster and close the lid...we have Bears!
- Treat other people the way you want to be treated.

PLEASE DO NOT:

- Walk on the roads that vehicles drive on.
- Sleep in vehicle parking areas.



- 1 Check-in/ Demob
 - 2 Equipment Time
 - 3 Briefing Area
 - 4 Radio Tech
 - 5 Shower
 - 6 Laundry
 - 7 Kitchen
 - 8 Supply
 - 9 Lunches/ Water/ Ice
 - 10 Chainsaw Vendor
 - 11 Sleeping Trailers
 - 12 Crew Sleeping
 - 13 CCC Sleeping
 - 14 Media
 - 15 Covid Testing
-  Medical Unit
 Dumpsters





Heavenly Basecamp Map
Caldor Incident East Zone
 CA-ENF-024030
 3860 Saddle Rd, SLT

A. Vargas Updated 9/19/2021



**GROUND SUPPORT
MAP**

**Caldor Incident
East Zone
CA-ENF-024030**

- 1 Inspection/Mechanic
- 2 Driver's Tent
-  Dumpsters

Lake Tahoe Airport
1901 Airport Rd / Lisa
Maloff Way



**Ground Support
Contact Information**
Transportation: Richard Monk 913-967-9072
Mechanics: Syler 951-312-0455

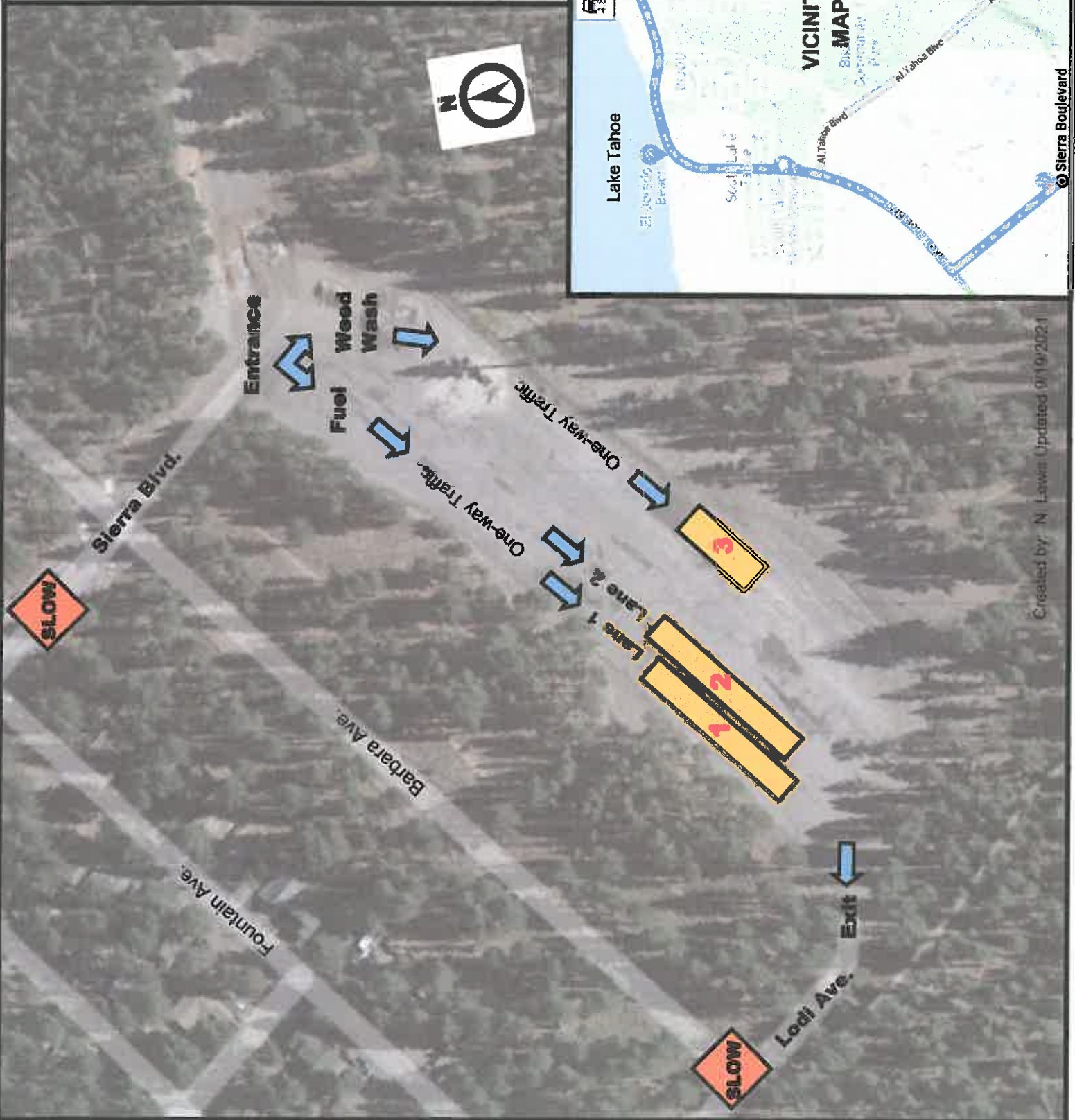
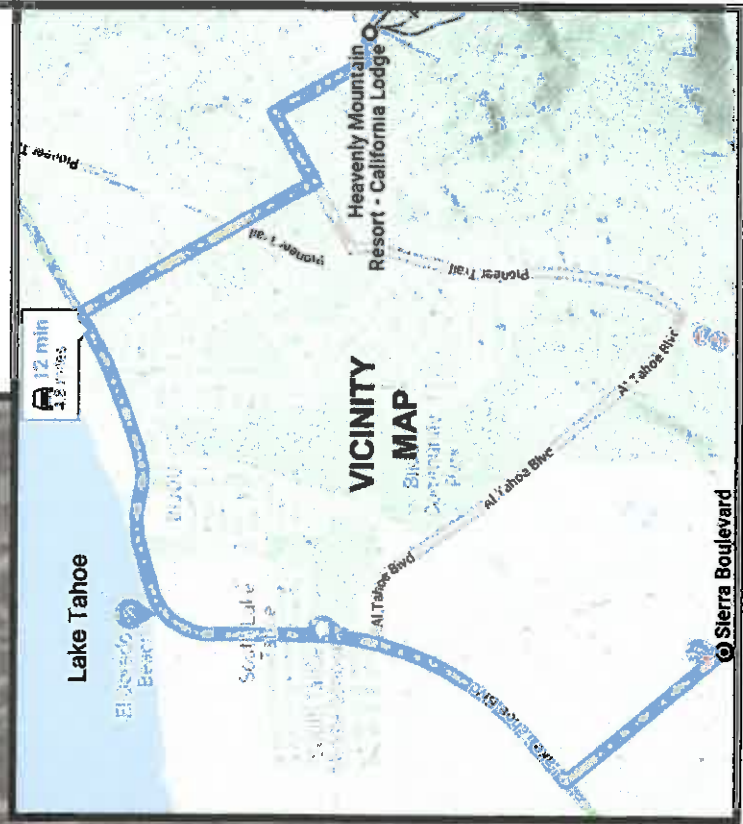


WEED WASH AND REFUEL MAP

Caldor Incident East Zone

CA-ENF-024030

- 1 Fuel Tender Lane 1
- 2 Fuel Tender Lane 2
- 3 Weed Wash



**STATE DPA
CAL FIRE
RESOURCES**

ASSIGNMENT LIST (ICS 204 WF)

CONTROLLED UNCLASSIFIED
INFORMATION/BASIC

1. Incident Name: AEU Caldor Support	2. Operational Period: Date From: 09/23/21 Date To: 09/24/21 Time From: 0700 Time To: 0700	3. Branch Division SRA EAST SRA
---	---	--

4. Operations Personnel:		Page 1 of 1
Operations Section Chief:	Night Ops:	
Branch Director:	Branch Safety:	
Division/Group Supervisor: T. Gifford (12hr)	Air Attack:	

5. Resources Assigned:	** Resources Below in Bold are 12 Hour **							
Resource Identifier	ALS	LWD	Leader	Personnel	Request #	Hours	Reporting Location	
STC AEU 9272C			T. Gifford	18	E-37	0700-1900	Chateau	
STG AEU 9279G (CCC)			D. Garnin	32	C-3	0700-1900	Chateau	

6. Work Assignments:
 Maintain 3-minute response time.
 Maintain patrol status within the burn area.

7. Special Instructions:

8. Communications							
Name	Ch	Function	Rx Freq	Rx Tone	Tx Freq	Tx Tone	Notes
XED CMD	1	COMMAND	155.9025	186.2 (T31)	159.2775	114.8 (T11)	WEST BRANCHES AEU SUPPORT
CDF T27	7	TACTICAL	159.3075	192.8 (T16)	159.3075	192.8 (T16)	EST SRA & FSR EAST
A/G TAC 2	14	AIR TO GROUND	169.2875		169.2875		A/G LOGS
CALCORD	15	MEDICAL	156.0750	156.7 (T6)	156.0750	156.7 (T6)	EMS COORDINATION ONLY
GUARD 16	16	EMERGENCY	168.6250		168.6250	110.9 (T1)	EMERGENCY USE ONLY

9. Prepared by: Name: N. Pimlott RESL Signature:

ICS 204 Date/Time: 9/22/2021 2200 Personnel Count: 50

ASSIGNMENT LIST (ICS 204 WF)

CONTROLLED UNCLASSIFIED
INFORMATION/BASIC

1. Incident Name: AEU Caldor Support	2. Operational Period: Date From: 09/23/21 Date To: 09/24/21 Time From: 0700 Time To: 0700	3. Branch Division FSR WEST1 Group 2
---	---	---

Page 1 of 1

4. Operations Personnel:	
Operations Section Chief: Branch Director: S. DeBenedet (12hr) Division/Group Supervisor: P. Smith (12hr)	Night Ops: Branch Safety: Air Attack:

5. Resources Assigned:		** Resources Below in Bold are 12 Hour **					
Resource Identifier	ALS	LWD	Leader	Personnel	Request #	Hours	Reporting Location
DOZ PVT E-19 TREACHEROUS			C. Klauer	1	E-19	0700-1900	Happy Valley x Sweeney
EXC PVT E-84 AMOS			M. Amos	1	E-84	0700-1900	Happy Valley x Sweeney
HEQB (T) NEGRETE			M. Negrete	1	O-53	0700-1900	Happy Valley x Sweeney
FSRS VOLMER			S. Volmer	1	O-111	0700-1900	Happy Valley x Sweeney

6. Work Assignments:
Implement Fire Suppression repair plan.
Identify and document fire suppression repair needs.

7. Special Instructions:

8. Communications							
Name	Ch	Function	Rx Freq	Rx Tone	Tx Freq	Tx Tone	Notes
XED CMD	1	COMMAND	155.9025	186.2 (T31)	159.2775	114.8 (T11)	WEST BRANCHES AEU SUPPORT
CDF T26	6	TACTICAL	159.2925	192.8 (T16)	159.2925	192.8 (T16)	FSR GROUP 2
A/G TAC 2	14	AIR TO GROUND	169.2875		169.2875		A/G LOGS
CALCORD	15	MEDICAL	156.0750	156.7 (T6)	156.0750	156.7 (T6)	EMS COORDINATION ONLY
GUARD 16	16	EMERGENCY	168.6250		168.6250	110.9 (T1)	EMERGENCY USE ONLY

9. Prepared by: Name: N. Pimlott	RESL	Signature:
ICS 204	Date/Time: 9/22/2021 2200	Personnel Count: 4

ASSIGNMENT LIST (ICS 204 WF)

CONTROLLED UNCLASSIFIED
INFORMATION/BASIC

1. Incident Name: AEU Caldor Support	2. Operational Period: Date From: 09/23/21 Date To: 09/24/21 Time From: 0700 Time To: 0700	3. Branch Division FSR EAST EAST
		Page 1 of 2

4. Operations Personnel:	
Operations Section Chief: Branch Director: M. Scheeline (12hr) Division/Group Supervisor: N. Ozard (12hr)	Night Ops: Branch Safety: Air Attack:

5. Resources Assigned:		** Resources Below in Bold are 12 Hour **					
Resource Identifier	ALS	LWD	Leader	Personnel	Request #	Hours	Reporting Location
CRW NEU 2349			J. Wilburn	6	C-4	0700-1900	HWY 50 x Jewell Rd
W/T PVT E-51 FIRELINE			R. Hurl	1	E-51	0700-1900	HWY 50 x Jewell Rd
MAST PVT E-91 KRISMAN			T. Krisman	1	E-91	0700-1900	HWY 50 x Jewell Rd
MAST PVT E-92 HEAVY HAUL			A. Harris	1	E-92	0700-1900	HWY 50 x Jewell Rd
MAST PVT E-93 COLLINS			M. Collins	1	E-93	0700-1900	HWY 50 x Jewell Rd
MAST PVT E-94 COLMAN			P. Leuzinger	1	E-94	0700-1900	HWY 50 x Jewell Rd
MAST PVT E-95 BLACK BEAR			M. Bwling	1	E-95	0700-1900	HWY 50 x Jewell Rd
MAST PVT E-96 STEVEN HILL			S. Hill	1	E-96	0700-1900	HWY 50 x Jewell Rd
MAST PVT E-97 GOLTERMAN			C. Golterman	1	E-97	0700-1900	HWY 50 x Jewell Rd
MAST PVT E-109 SLOWMOW			M. North	1	E-109	0700-1900	HWY 50 x Jewell Rd
EXC PVT E-47 KDK			K. Drew	1	E-47	0700-1900	HWY 50 x Jewell Rd
EXC PVT E-53 FOOTHILL			K. Kent	1	E-53	0700-1900	HWY 50 x Jewell Rd
EXC PVT E-65 LESLIE			J. Kroller	1	E-65	0700-1900	HWY 50 x Jewell Rd
SKD PVT E-5 TRESSLER			B. Davidson	1	E-5	0700-1900	HWY 50 x Jewell Rd
STG AEU 9273G (CDCR)			A. Cholico	32	C-1	0700-1900	HWY 50 x Jewell Rd
SKD PVT E-10 KLEE			J. Klee	1	E10	0700-1900	HWY 50 x Jewell Rd
SKD PVT E-136 HERTZIG			D. Briski	1	E-136	0700-1900	HWY 50 x Jewell Rd
CHIP PVT E-3 TIMBERSMITH			C. Moultrie	1	E-3	0700-1900	HWY 50 x Jewell Rd

6. Work Assignments:
 Implement Fire Suppression repair plan.
 Identify and document fire suppression repair needs.

7. Special Instructions:

8. Communications							
Name	Ch	Function	Rx Freq	Rx Tone	Tx Freq	Tx Tone	Notes
CDF T27	7	TACTICAL	159.3075	192.8 (T16)	159.3075	192.8 (T16)	EST SRA & FSR EAST
TMU AD 2	3	COMMAND	171.5750	156.7 (T6)	165.4125	123.0 (T2)	TAHOE BASIN AEU SUPPORT
A/G TAC 2	14	AIR TO GROUND	169.2875		169.2875		A/G LOGS
CALCORD	15	MEDICAL	156.0750	156.7 (T6)	156.0750	156.7 (T6)	EMS COORDINATION ONLY
GUARD 16	16	EMERGENCY	168.6250		168.6250	110.9 (T1)	EMERGENCY USE ONLY

9. Prepared by: Name: N. Pimlott	RESL	Signature:
ICS 204	Date/Time: 9/22/2021 2200	Personnel Count: 54

ASSIGNMENT LIST (ICS 204 WF)

CONTROLLED UNCLASSIFIED
INFORMATION/BASIC

1. Incident Name: AEU Caldor Support	2. Operational Period: Date From: 09/23/21 Date To: 09/24/21 Time From: 0700 Time To: 0700	3. Branch Division FSR EAST EAST
---	---	---

Page 2 of 2

4. Operations Personnel:	
Operations Section Chief: Branch Director: M. Scheeline (12hr) Division/Group Supervisor: N. Ozard (12hr)	Night Ops: Branch Safety: Air Attack:

5. Resources Assigned:		** Resources Below in Bold are 12 Hour **					
Resource Identifier	ALS	LWD	Leader	Personnel	Request #	Hours	Reporting Location
HEQB(T) BARDWELL			J. Bardwell	1	O-36	0700-1900	HWY 50 x Jewell Rd
FSRS SHORT			L. Short	1	O-34	0700-1900	HWY 50 x Jewell Rd
FSRS WHITSON			G. Whitson	1	O-35	0700-1900	HWY 50 x Jewell Rd
FSRS STONE			A. Stone	1	O-37	0700-1900	HWY 50 x Jewell Rd
FSRS(T) ALEGRIA			N. Alegria	1	O-31	0700-1900	HWY 50 x Jewell Rd
FSRS HARVEY			J. Harvey	1	O-109	0700-1900	HWY 50 x Jewell Rd

6. Work Assignments: Implement Fire Suppression repair plan. Identify and document fire suppression repair needs.
--

7. Special Instructions:

8. Communications							
Name	Ch	Function	Rx Freq	Rx Tone	Tx Freq	Tx Tone	Notes
CDF T27	7	TACTICAL	159.3075	192.8 (T16)	159.3075	192.8 (T16)	EST SRA & FSR EAST
TMU AD 2	3	COMMAND	171.5750	156.7 (T6)	165.4125	123.0 (T2)	TAHOE BASIN AEU SUPPORT
A/G TAC 2	14	AIR TO GROUND	169.2875		169.2875		A/G LOGS
CALCORD	15	MEDICAL	156.0750	156.7 (T6)	156.0750	156.7 (T6)	EMS COORDINATION ONLY
GUARD 16	16	EMERGENCY	168.6250		168.6250	110.9 (T1)	EMERGENCY USE ONLY

9. Prepared by: Name: N. Pimlott	RESL
Signature:	
ICS 204	Date/Time: 9/22/2021 2200
	Personnel Count: 6

