

*** Corrected ***

INCIDENT ACTION PLAN

CALDOR FIRE INCIDENT

CA-ENF-024030

P5N8GM21

Saturday



OPERATIONAL PERIOD

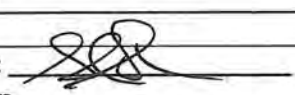
8/21/2021 0700

to

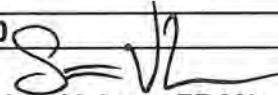
8/22/2021 0700



ORGANIZATION ASSIGNMENT LIST (ICS 203)

1. Incident Name: Caldor Incident		2. Operational Period: Date From: 8/21/2021 Time From: 0700		Date To: 8/22/2021 Time To: 0700	
3. Incident Commander(s) and Command Staff:			7. Operation Section:		
IC/UC's	J.Veik / D. Martin (T) / B.Newburn		Operations	E. Schwab	
Deputy	M. Marcucci / J. Janssen (T)		Deputy Operations	S. Lane / M. Wallen (T)	
Safety Officer	J.Novak / B.Carter		Night Ops	T. Ernst	
Information Officer	R. Lubben (T)		Staging Area	ICP	D. Hames
Liaison Officer	J. Kiszka / M. Watson (T)				
4. Agency/Organization Representatives:			Branch	I	D. Esades
Agency/Organization	Name		Division/Group	A	B. Egan
USFS AREP	Jeff Marsolais		Division/Group	D	<i>S. West</i>
Cal Fire AREP	Mike Blankenheim		Division/Group	F	P. Lohan
EDSO	Todd Crawford		Division/Group		
SPI	Tim Tate		Division/Group		
PG&E	Mike Webb		Branch	X	Loomis (12)
COVID-19 Advisor	Chuck Loffland		Division/Group	H	<i>A. Estabrook</i>
Grizzley Flats CSD	Jodi Lauther		Division/Group	J	M. Loeffler
ENF Resource Adviser	Jen House		Division/Group	L	J. Chester (12)
IBA	Julie Bennett		Division/Group		
Amador County Sheriff	Jason Navarre		Division/Group		
Placerville PD	Joe Wren		Branch	XX	
CHP	Rick Hatfield		Division/Group	N	
Cal Trans	Greg Duffy		Division/Group	P	P. Preston
BLM	Jerry Martinez		Division/Group	R	
Cal OES	John Salvate		Division/Group		
AT&T	Kevan Young		Division/Group		
5. Planning Section:			Branch	XXX	N. Hale
Chief	S. Sherwood		Division/Group	T	J. Plummer
Deputy	D. Scheurich (T)		Division/Group	U	<i>I. Stevens</i>
Resource Unit	J. Heald / M. Thomas / J. Anderson		Division/Group	W	A. Sigona
Situation Unit	I. Crossley / J. Abeel / D. Van Goidsenhoven		Division/Group		
Demobilization Unit	L. Pasero (T)		Division/Group	El Dorado	C. Blankenheim / T. Thane
GISS	C. Poli		Staging Area	ICP	D. Hames (12)
FBAN	S. Volmer		Division/Group		
IMET	J.Dudley		Division/Group		
Hired Equipment Tech Spec.	C. Myers		Division/Group		
Crew Tech Spec.	J. Flattery		Air Operations Branch:		Director: C. Inwood (T)
Training Tech Spec.			Air Support Group Supervisor		F. Abril (T)
6. Logistics Section:			Air Tactical Group Supervisor		A. Sanchez
Chief	S. Dohman / D. Alizea		Helibase Manager		R. Johnson
Deputy Chief	J. Warden (T)				
Supply Unit	P. Lee/B.Luiz(T)		8. Finance/Administration Section:		
Facilities Unit	J. Finley		Chief	S. Hogan	
Ground Support Unit	J. Christofferson		Deputy Chief	G. Belk	
Communications Unit	J. Brooks		Time Unit	J. Navarro / J. Andrade (T)	
Medical Unit	J. Segura		Procurement Unit	M. Lamonica/H. Horn (T)	
Motel Unit	J. Tomsich		Comp/Claims Unit	B. Stirton	
Food Unit	J. McGuire / M. Wong (T) / B. Brewer (T)		Cost Unit	J. Tapia	
Prepared By: Name:	S. Sherwood	Position/Title:	PSC	Signature:	
ICS 203		Date/Time:	8/20/2021 2300 hours		

FIRE BEHAVIOR FORECAST

FORECAST NUMBER: 3	TYPE OF FIRE: WILDFIRE
FIRE NAME: CALDOR CAENF-024030	OPERATIONAL PERIOD: 8/21-8/22/21 0700-0700
DATE ISSUED: 8/20/2021	TIME ISSUED: 1900
UNIT: ELDORADO NATIONAL FOREST	SIGNED:  Typed/printed: Stephen Volmer FBAN

INPUTS

WEATHER SUMMARY:

****RED FLAG WARNING IS IN EFFECT FROM 11AM TO 8PM****

Temperatures will be in the high 70's with minimum relative humidity 17-22%. Winds will be out of the south 10-15mph gusting to 25mph through noon, then shifting to the southwest 11-17mph with gusts to 28mph. Ridgetop winds will be gusty from the southwest 20-25mph. Winds will slow down overnight but return to the southwest flow in the early morning with less intensity. Nighttime temperature will be in the 50's with humidity rising up to 55-60%.

****Review the weather forecast for more details****

OUTPUTS

FIRE BEHAVIOR

FUEL MODEL	RATE OF SPREAD FT/MIN	FLAME LENGTH FT	SPOTTING DISTANCE	PROBABILITY OF IGNITION
TIMBER	12	7	.8 miles	86%
UNDERSTORY	25	13	.8 miles	86%

GENERAL:

*******ACTIVE and PASSIVE CROWN FIRES WILL BE POSSIBLE WITH RATES OF SPREAD ABOVE 125 ft/min and FLAME LENGTHS ABOVE 97 ft.*******

All the fuel in the area is extremely dry and receptive to ignition. Single and group tree torching will occur due to the abundant low ladder fuels and tight canopies. A Fuels and Fire Behavior Advisory has been issued for the area by the Northern California Predictive Services for critical fire spread conditions. Current ERC's are above the 90th percentile, 100hr fuels are below the 10th percentile and 1000 hr fuels are below the 3rd percentile. Local live fuel moistures are above critical levels, but brush fields still maintain an abundant amount of dead material within them due to the prolonged drought and will produce moderate rates of spread.

SPECIFIC:

- Spotting will occur throughout the shift due to the increase in southwest winds and abundant surface and ladder fuels in conjunction with very receptive fuel beds.
- Spot fires will be hidden from view due to dense timber stands and limited road systems. Use caution, where there is one spot, there are probably many more in that area.
- Multiple drainages containing heavy fuels are in alignment with the winds and topography and will produce dangerous rates of spread and long range ember cast.

AIR OPERATIONS:

Smoke clearing in the early morning, with increased visibility and increased fire activity. Transport winds out of the southwest 25mph with a mixing height of 6,700' AGL. Expect erratic winds across the ridgetops. Air resources may be limited or ineffective due to the increased winds.

Sunset 19:48

Sunrise 06:24

SAFETY:

- Know where your escape routes and safety zones are and have an alternate route to them.
- Be alert. Keep calm. Think clearly. Act decisively.
- Expect any fire weakened timber to release without warning in the gusty wind conditions.

Fuels and Fire Behavior Advisory

Northern California

August 17, 2021 to August 31, 2021



Subject: Potential for extreme fire behavior due to critically low live and dead fuel moistures, very dry conditions resulting from persistent drought, minimal snowpack and spring precipitation, and elevated fire danger rating values across much of northern California.

Discussion: Fires burning in northern California are exhibiting extreme fire growth based on critical fuel conditions. Fire spread is fuel driven and does not depend on wind to spread. Surface fuels are very receptive to embers. Long range spotting, area ignition, and group torching is occurring on large fires frequently.

Difference from normal conditions: Northern California is in a drought; currently with 90% at Extreme to Exceptional levels. The drought is expected to persist or intensify thorough out the fire season. Deficient rainfall and snowpack with early melt off has resulted in fuels that are below average in dryness, with record setting conditions for most areas.

Concerns to Firefighters and the Public:

- Energy Release Component (ERC) at numerous weather stations set record maximums already this year and are running at or above the 97th percentile in most cases. Expect increased fire intensity and spread rates in these areas. Early season extreme fire behavior has been observed in both light and heavy fuels. **Anticipate increased spread rates, spotting, and active nighttime burning.**
- The combination of persistent drought and record-low rainfall and snowpack amounts has led to very low live and dead fuel moistures. Low 1000-hour fuel moistures have been evidenced by complete consumption of dead fuels on recent fires. Live fuel moistures in grasses, shrubs and trees, have already reached critical levels in many areas of Northern California due to limited green-up this spring. **Expect fires to ignite easier and spread faster. Do not expect fires to exhibit reduced fire behavior when entering areas of live fuels; anticipate increased spread rates and spotting.**
- Direct attack is often not feasible under regular diurnal wind conditions with ground resources. And aviation utilization is often insufficient in moderating rate of spread without immediate heavy ground resource response. **Anticipate higher resistance to control in all fuel types.**
- Already this year, Northern California has experienced large fire activity and multiple team deployments. California will likely experience an extended fire season. It is important to be mindful of and manage fatigue for all resources. **Everyone, every day, returns home safely.**

Mitigation Measures:

- Local and inbound fire personnel need to be aware that fire behavior across the state is exceeding normal expectations for this time of the year. **Local briefings need to be thorough and highlight specific fire environment conditions. These include but are not limited to local weather forecasts, Pocket Cards, ERC's, live and dead fuel moistures.**
- Suppression actions need to be based on good anchor points, escape routes, and safety zones. **Remember LCES. Experienced lookouts are essential under these conditions.**
- Base all actions on current and expected behavior of the fire. **Augment initial attack resources as incident activity dictates.**

Area of Concern: Northern California except for the following Predictive Service Areas: North Coast and Bay Marine, west of Highway 101 in Mid-Coast to Mendocino and Diablo-Santa Cruz, and the north eastern portion of Far Eastside.



SAFETY MESSAGE CALDOR INCIDENT



1. Incident Name: CALDOR	2. Operational Period: Date From: 8/21/21 Time From: 07:00	Date To: 8/22/21 Time To: 07:00
---------------------------------	---	------------------------------------

FIRING OPERATIONS: Documented Plan

Don't let pressure influence your decision-making process
 If you have time to talk about it; you have time to document your plan.
 Wear all PPE; shrouds down, sleeves down, wildland approved Gloves.

DOZER & HEAVY EQUIPMENT: Watch the Swamper/Operator

Maintain Communications – Always make eye contact before approach.
 Do not work below unit; rolling material can jeopardize your safety.
 Communicate all hazards to the operator.

HEALTH & WELLNESS: Wear a Mask, PLEASE!

Adhere to COVID-19 Best Practices – Wipe Surfaces & Door Handles.
MONITOR yourself and your assigned personnel for **FATIGUE** and **DEHYDRATION**.
 Avoid Complacency; Maintain Good Work Rest Cycles.

DEFENSIVE DRIVING REQUIREMENTS: Be the PROFESSIONAL.

EVALUATE your driving routes; monitor speed, gear selection, & brakes.
UTILIZE chocks, backers and spotters; when in doubt scout it out!

FIRE BEHAVIOR: Maintain Situational Awareness & Predict.

ALWAYS wear proper PPE for the potential fire behavior.
Hazard Trees: Drought, Bug Kill, & Fire Weakened trees all have accident potential.
Fuels: **RECEPTIVE** - Rates of Spread: Long Range Spotting – Watch for alignment!

WINDS ADD DANGER IN ALL OPERATIONS.

No frontal assaults when combating wind-driven fire conditions.

Terrain & Drainages:

Steep, Footing Issues, Access Issues – Creates alignment and Safety Issues.

Primary, Alternate, Contingency, Emergency Planning on all new assignments;
 Calculate Risk and Take Appropriate Actions based on predicted extreme fire behavior and available resources; have them in-place prior to executing any plan.

4. Site Safety Plan Required? Yes No

5. Prepared by: Name: J. Buchmeier SOF1 / J. Novak SOF1

ICS 208

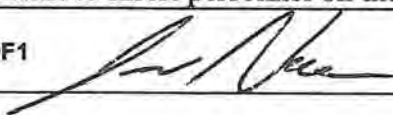
Date/Time: August 20, 2021 1900

**CALDOR FIRE
RISK ANALYSIS (ICS 215-A)**

DIV	HAZARDOUS ACTIONS/CONDITIONS	MITIGATIONS / WARNINGS / REMEDIES
ALL	EXTREME FIRE BEHAVIOR & NEW START(S)	Know your LCES and maintain Situational Awareness. Use experienced Look Outs. Follow downhill line construction guidelines. Monitor weather for changes in the wind, temp, and RH during the shift. Have a contingency plan with established decision points and safety zones.
ALL	COVID 19, ILLNESS, & HYGIENE	Adhere to local, state, federal and CDC health guidelines. Maintain social distancing when applicable. Wear a mask if unvaccinated. Report any illness symptoms immediately to a supervisor. Hygiene, hand washing, and disinfecting of surfaces & handles often.
ALL	FATIGUE, HEAT, & DEHYDRATION	Don't underestimate the task at hand. Adhere to work/rest cycle for all task(s). Drink water before, during and after shifts, up to 1.5 gal. per shift. Review Heat Related Emergencies (IRPG Pg. 109). Seek shade when you can. Watch for stack-effect of fatigue and exhaustion; REST & Plan operations.
ALL	COMPLACENCY	Be alert for signs of fatigue and distractions; remain engaged. Know your LCES and maintain situational awareness. Have the right radio clone. Know your adjoining forces and FREQUENCIES . Primary, Alternate, Contingency, Emergency on all assignments.
ALL	REPTILES, BEE'S & ANIMALS	Watch Out for RATTLESNAKES! Be aware of possible bee or wasp hives. Be cautious to other natural animals and hazards associated with each.
ALL	STEEP TERRAIN / ROLLING DEBRIS	Watch your footing while hiking in steep terrain. Be careful of loose rolling debris. Maintain Situational Awareness . Know Tree Hazards in the work area. Dangerous Mountain Roads – SLOW Defensive Driving .
ALL	FALLING MODULES & HAZARD TREES.	The ones that haven't fallen yet; look up, look around – identify hazard trees. Identify and isolate the area to provide for the safety of others. Drought-Stressed Trees are weakened; Flag and make proper notifications. Do not fall trees out of your certification level. Evaluate wind and lean prior to making cuts.
ALL	DRIVING HAZARDS	SLOW DOWN! Do 360's before moving vehicles. Utilize Chocks. Drive with headlights & seatbelts on; drive defensively on steep winding roads. Watch Speed through communities; public perception and safety are key. Utilize spotters and backers; when in doubt, scout it out. Assess Road Conditions; Flag hazard if you cannot mitigate, report.
ALL	MINE SHAFTS	Caution to mine shafts that may be in the fire area. Do not enter or seek shade in shafts; stay clear and identify.
ALL	AIRCRAFT OPERATIONS	Monitor air-to-ground frequencies; they are your eyes in the sky. Use air-to-ground frequency to communicate with aircraft. Use clear, concise statements when directing aircraft; CLEAR THE LINE! Only utilize aircraft to insert personnel on the line when necessary.

Incident Name: **CALDOR FIRE**
ICS 215a

Prepared by:
Jason Novak SOF1



OPERATIONAL PERIOD
8/21/21-8/22/21
0700-0700

ASSIGNMENT LIST (ICS 204 WF)

CONTROLLED UNCLASSIFIED
INFORMATION//BASIC

1. Incident Name: <p style="text-align: center;">Caldor Incident</p>	2. Operational Period: Date From: 08/21/21 Date To: 08/22/21 Time From: 0700 Time To: 0700	3. Branch Division <p style="text-align: center;">I A</p>
---	---	---

4. Operations Personnel:		Page 1 of 2 Alpha
Operations Section Chief: E. Schwab	Night Ops: T. Ernst	
Branch Director: D. Esades	Branch Safety:	
Division/Group Supervisor: B. Egan	Air Attack: A. Sanchez	

5. Resources Assigned:	** Resources Below in Bold are 12 Hour **							
Resource Identifier	ALS	LWD	Leader	Personnel	Request #	Hours	Reporting Location	
STA OES 2806A			S. Hagarty	18	E-20344	0700-0700	ICP	
STA XLG 1362A			K. Millikan	20	E-20343	0700-0700	ICP	
STC MVU 9332C			K. Thompson	16	E-20085	0700-0700	ICP	
T/F CALDOR 1			P. Moffett	18	E-9002	0700-0700	ICP	
T/F CALDOR 2			C. Crowl	24	E-9003	0700-1900	ICP	
T/F XBO 6211			D. Wooters	0	E-20310	0700-0700	ICP	
STG MVU 9339G			G. Salas	36	C-20033	0700-1900	ICP	
LAGUNA IHC			T. Kraling	20	C-1	0700-1900	ICP	
CRW ENF CREW 23			B. Fletcher	10	O-164	0700-1900	ICP	
CRW ENF Crew 26					O-4	0700-1900	ICP	
DOZ ANF 10			A. Nava	2	E-34	0700-1900	ICP	
DOZ PVT E-29			M. Armstrong	1	E-29	0700-1900	ICP	
DOZ PVT E-33			B. Caruthers	2	E-33	0700-1900	ICP	
DOZ PVT E-20261			M. Dusi	2	E-20261	0700-0700	ICP	
W/T BDF 251			F. Delgado	2	E-67	0700-1900	ICP	
W/T MDF 257			H. Venuto	1	E-113	0700-1900	ICP	
W/T PVT E-20005			D. Rempel	1	E-20005	0700-1900	ICP	
W/T PVT E-20007			R. Carvalho	1	E-20007	0700-1900	ICP	

6. Work Assignments:
 Prepare for firing operations and implement burn plan.
 Construct control lines as direct as possible.
 Insert progressive hose lays.
 Improve and hold established control lines.

7. Special Instructions:
 Branch I SOFR HUBBY / SOFR-T FOY
MAST E-20028 A. Harris 1 E-20028 0700-1900

8. Communications							
Name	Ch	Function	Rx Freq	Rx Tone	Tx Freq	Tx Tone	Notes
ENF T2	1	COMMAND	171.5250N	156.7	162.7500N	123	LEEK SPRINGS
NIFC T3	9	TACTICAL	168.6000N		168.6000N		
A/G TAC	14	AIR TO GROUND	164.1375N		164.1375N		
CALCORD	15	MEDICAL	156.0750N	156.7	156.0750N	156.7	MEDICAL COORDINATION
GUARD 20	16	EMERGENCY	168.6250N		168.6250N	110.9	EMERGENCY USE ONLY

9. Prepared by: Name:	J. Heald	RESL	24 Hr Shift: 38
	Signature:		12 Hr Shift: 57
ICS 204	Date/Time: 8/20/2021 2200		Total: 174

ASSIGNMENT LIST (ICS 204 WF)

CONTROLLED UNCLASSIFIED
INFORMATION//BASIC

1. Incident Name:	2. Operational Period:	3. Branch	Division
Caldor Incident	Date From: 08/21/21 Date To: 08/22/21 Time From: 0700 Time To: 0700	I	D

Page 1 of 2 Delta

4. Operations Personnel: Operations Section Chief: E. Schwab Branch Director: D. Esades Division/Group Supervisor: S. West	Night Ops: T. Ernst Branch Safety: Air Attack: A. Sanchez
---	---

5. Resources Assigned: **** Resources Below in Bold are 12 Hour ****

Resource Identifier	ALS	LWD	Leader	Personnel	Request #	Hours	Reporting Location
STC FKU 9430C			T. Bolyard	16	E-20209	0700-0700	ICP
ENG CNF 323 332 → J			C. Hamilton	5	E-27	0700-1900	ICP
ENG SRF 342			J. Leuis	5	E-107	0700-1900	ICP
ENG BDF 5R			T. Norwood	5	E-112	0700-1900	ICP
ENG BDF 1R			A. Tinker	5	E-110	0700-1900	ICP
ENG TIA 696			D. Stordy	4	E-35	0700-1900	ICP
CRW AEU GRB 1			S. Lewindowski	14	C-5	0700-1900	ICP
CRW STF Groveland IHC			T. Marcin	18	C-3	0700-1900	ICP
CRW BIA Rancheria 81			L. Millis	9	C-9	0700-1900	ICP
DOZ NEU 2341			B. Rodgers	2	E-48	0700-0700	ICP
DOZ PVT E-30			T. Huckaby	2	E-30	0700-1900	ICP
DOZ PVT E-20181			R. Dominikus	1	E-20181	0700-1900	ICP
DOZ PVT E-20184			J. Palmer	2	E-20184	0700-1900	ICP
DOZ PVT E-20257			B. Hendrix	3	E-20257	0700-0700	ICP
DOZ PVT E-20258			T. Wanzer	2	E-20258	0700-0700	ICP
DOZ PVT E-20260			E. Herl	2	E-20260	0700-0700	ICP
W/T PVT E-20003			B. Bedell	2	E-20003	0700-0700	ICP

6. Work Assignments:
 Prepare for firing operations and implement burn plan.
 Construct control lines as direct as possible.
 Insert progressive hose lays.
 Improve and hold established control lines.

7. Special Instructions:
 Branch I SOFR HUBBY / SOFR-T FOY

8. Communications

Name	Ch	Function	Rx Freq	Rx Tone	Tx Freq	Tx Tone	Notes
ENF T2	1	COMMAND	171.5250N	156.7	162.7500N	123	LEEK SPRINGS
NIFC T6	8	TACTICAL	166.7750N		166.7750N		
A/G TAC	14	AIR TO GROUND	164.1375N		164.1375N		
CALCORD	15	MEDICAL	156.0750N	156.7	156.0750N	156.7	MEDICAL COORDINATION
GUARD 20	16	EMERGENCY	168.6250N		168.6250N	110.9	EMERGENCY USE ONLY

9. Prepared by: Name: J. Heald RESL 24 Hr Shift: 23
 Signature:  12 Hr Shift: 54
 ICS 204 Date/Time: 8/20/2021 2200 Total: 97

ASSIGNMENT LIST (ICS 204 WF)

CONTROLLED UNCLASSIFIED
INFORMATION//BASIC

1. Incident Name: <p style="text-align: center;">Caldor Incident</p>	2. Operational Period: Date From: 08/21/21 Date To: 08/22/21 Time From: 0700 Time To: 0700	3. Branch Division <p style="text-align: center;">I D</p>
---	---	---

Page 2 of 2 Delta

4. Operations Personnel: Operations Section Chief: E. Schwab Branch Director: D. Esades Division/Group Supervisor: S. West	Night Ops: T. Ernst Branch Safety: Air Attack: A. Sanchez
---	---

5. Resources Assigned:		** Resources Below in Bold are 12 Hour **					
Resource Identifier	ALS	LWD	Leader	Personnel	Request #	Hours	Reporting Location
W/T PVT E-20006			M. Humphrey	1	E-20006	0700-1900	ICP
W/T PVT E-20010			D. Gray	1	E-20010	0700-1900	ICP
W/T PVT E- 20012 20011			D. Sasser	1	E-20012	0700-1900	ICP
W/T PVT E-20013			E. Molina	2	E-20013	0700-0700	ICP
W/T PVT E-20172			M. Kempf	2	E-20172	0700-0700	ICP
W/T PVT E-20178			K. Gray	2	E-20178	0700-0700	ICP
MAST PVT E-20029			M. Collins	2	E-20029	0700-1900	ICP
MAST PVT E-20389			S. Hill	2	E-20389	0700-1900	ICP
SKDGN PVT E-65			C. Gehrke	2	E-65	0700-0700	ICP
SKDGN PVT E-64			T. Eggar	2	E-64	0700-1900	ICP
HEQB HERREN			C. Herren	1	O-25	0700-1900	ICP
DOZ LNU 1449			K. Mittlestead	2	E-50	0700-0700	
DOZ PVT Hertzog			P. Bauer		E-101		
HEQB Graham			J. Graham		O-20019	0700-0700	

6. Work Assignments:
 Prepare for firing operations and implement burn plan.
 Construct control lines as direct as possible.
 Insert progressive hose lays.
 Improve and hold established control lines.

7. Special Instructions:
 Branch I SOFR HUBBY / SOFR-T FOY

8. Communications							
Name	Ch	Function	Rx Freq	Rx Tone	Tx Freq	Tx Tone	Notes
ENF T2	1	COMMAND	171.5250N	156.7	162.7500N	123	LEEK SPRINGS
NIFC T6	8	TACTICAL	166.7750N		166.7750N		
AVG TAC	14	AIR TO GROUND	164.1375N		164.1375N		
CALCORD	15	MEDICAL	156.0750N	156.7	156.0750N	156.7	MEDICAL COORDINATION
GUARD 20	16	EMERGENCY	168.6250N		168.6250N	110.9	EMERGENCY USE ONLY

9. Prepared by: Name:	J. Heald	RESL	24 Hr Shift: 6
	Signature:		12 Hr Shift: 4
ICS 204	Date/Time: 8/20/2021 2200		Total: 18

ASSIGNMENT LIST (ICS 204 WF)

CONTROLLED UNCLASSIFIED
INFORMATION/BASIC

1. Incident Name: <p style="text-align: center;">Caldor Incident</p>	2. Operational Period: Date From: 08/21/21 Date To: 08/22/21 Time From: 0700 Time To: 0700	3. Branch Division <p style="text-align: center;">I F</p>
---	---	---

4. Operations Personnel:		Page 1 of 1 Foxtrot
Operations Section Chief: E. Schwab	Night Ops: T. Ernst	
Branch Director: D. Esades	#ERROR!	
Division/Group Supervisor: P. Lohan	Air Attack: A. Sanchez	

5. Resources Assigned:	** Resources Below in Bold are 12 Hour **							
Resource Identifier	ALS	LWD	Leader	Personnel	Request #	Hours	Reporting Location	
STAXOR 1421A			B. McDonough	22	E-20342	0700-0700	ICP	
STC BDU 9353C			B. Taylor	17	E-20000	0700-0700	ICP	
STC BDU 9350C			B. Lanning	16	E-20207	0700-0700	ICP	
ENG CNO 233			C. Pond	4	E-8	0700-1900	ICP	
ENG ANF 331			L. Winkler	4	E-3	0700-1900	ICP	
CRW AEU 9273G → EIDorado			A. Cholico	30	C-20003	0700-1900	ICP	
STG SLU 9346G (CCC)			E. Ortega	31	C-21	0700-1900	ICP	
CRW CNA 16A			M. Mocettini	22	C-16	0700-1900	ICP	
CRW SCU PECH 2			G. Pullen	15	C-17	0700-1900	ICP	
DOZ BEU 4645			J. Tresslev	2	E-47	0700-0700	ICP	
DOZ ENF 3			D. Angenderfer	4	E-200	0700-0700	ICP	
W/T XAM 6540				2	E-14	0700-0700	ICP	
W/T PVT E-20001			A. Chidley	2	E-20001	0700-0700	ICP	
W/T PVT E-20002			S. Zay	2	E-20002	0700-0700	ICP	
W/T PVT E-20019			M. Dahl	1	E-20019	0700-1900	ICP	
STL 9231C			D. Nelson	18	E-20211	0700-0700		
DOZ PVT E-20262			A. Francis	2	E-20262	0700-0700		
FALM O-20026			T. Janewalk		O-20026	0700-1900		

6. Work Assignments:
Construct control lines as direct as possible.
Insert progressive hose lays.
Improve and hold established control lines.

7. Special Instructions:
Branch I SOFR HUBBY / SOFR-T FOY

8. Communications							
Name	Ch	Function	Rx Freq	Rx Tone	Tx Freq	Tx Tone	Notes
ENF T2	1	COMMAND	171.5250N	156.7	162.7500N	123	LEEK SPRINGS
NIFC T1	7	TACTICAL	168.0500N		168.0500N		
A/G TAC	14	AIR TO GROUND	164.1375N		164.1375N		
CALCORD	15	MEDICAL	156.0750N	156.7	156.0750N	156.7	MEDICAL COORDINATION
GUARD 20	16	EMERGENCY	168.6250N		168.6250N	110.9	EMERGENCY USE ONLY

9. Prepared by: Name:	J. Heald	RESL	24 Hr Shift: 42
	Signature:		12 Hr Shift: 99
ICS 204	Date/Time: 8/20/2021 2200		Total: 174

ASSIGNMENT LIST (ICS 204 WF)

CONTROLLED UNCLASSIFIED
INFORMATION//BASIC

1. Incident Name: Caldor Incident	2. Operational Period: Date From: 08/21/21 Date To: 08/22/21 Time From: 0700 Time To: 0700	3. Branch Division X H
--	---	---


4. Operations Personnel: Operations Section Chief: E. Schwab Branch Director: B. Loomis (12) Division/Group Supervisor: A. Estabrook		Night Ops: T. Ernst Branch Safety: Air Attack: A. Sanchez
---	--	---

5. Resources Assigned:		** Resources Below in Bold are 12 Hour **					
Resource Identifier	ALS	LWD	Leader	Personnel	Request #	Hours	Reporting Location
STC OES 4800C	X		M. Piacentini	22	E-20341	0700-0700	ICP
STC LNU 9141C			J. Christison	16	E-20208	0700-0700	ICP
T/F XCA 4054			S. Kovacs	16	E-92	0700-0700	ICP
ENG MDF 335 → J			K. Stanley	5	E-103	0700-1900	ICP
ENG MNF 332 → J			C. Sampley	3	E-6	0700-1900	ICP
ENG BDF 13 → J			M. Gomez	5	E-109	0700-1900	ICP
ENG BDF 330 → J			C. Coward	5	E-111	0700-1900	ICP
ENG PTP 111			C. Darrell	4	E-39	0700-1900	ICP
ENG BOD 1411			R. Hansen	3	E-203	0700-1900	ICP
ENG NSS B5361			J. Gonzalez	4	E-20168	0700-1900	ICP
ENG SQF 345			D. Wild	5	E-21	0700-1900	ICP
STG NEU 9234G			M. Kidwell	31	C-20012	0700-1900	ICP
CRW TCU 4449			T. Swanson	7	C-20034	0700-1900	ICP
DOZ PVT E-20033			T. Vicini	2	E-20033	0700-0700	ICP
DOZ PVT E-20183			M. Nottnagel	2	E-20183	0700-0700	ICP
DOZ PVT E-20259			G. Bartlet	2	E-20259	0700-0700	ICP
DOZ PVT E-20255			N. Morton	3	E-20255	0700-0700	ICP
DOZ PVT E-20256			K. Dye	3	E-20256	0700-0700	ICP

6. Work Assignments:
 Construct control lines as direct as possible.
 Insert progressive hose lays.
 Improve and hold established control lines.
 Implement structure defense plan, with an emphasis on perimeter control.

7. Special Instructions:
 BRANCH X SOFR WHITE / SOFR-T RYAN (12)

8. Communications							
Name	Ch	Function	Rx Freq	Rx Tone	Tx Freq	Tx Tone	Notes
ENF T2	1	COMMAND	171.5250N	156.7	162.7500N	123	LEEK SPRINGS
NIFC T7	10	TACTICAL	168.2500N		168.2500N		
A/G TAC	14	AIR TO GROUND	164.1375N		164.1375N		
CALCORD	15	MEDICAL	156.0750N	156.7	156.0750N	156.7	MEDICAL COORDINATION
GUARD 20	16	EMERGENCY	168.6250N		168.6250N	110.9	EMERGENCY USE ONLY

9. Prepared by: Name: J. Heald RESL 24 Hr Shift: 64
 Signature:  12 Hr Shift: 60
 ICS 204 Date/Time: 8/20/2021 2200 Total: 138

ASSIGNMENT LIST (ICS 204 WF)

CONTROLLED UNCLASSIFIED
INFORMATION//BASIC

1. Incident Name: Caldor Incident	2. Operational Period: Date From: 08/21/21 Date To: 08/22/21 Time From: 0700 Time To: 0700	3. Branch Division X J
--	---	---

4. Operations Personnel:		Page 1 of 1 Juliet
Operations Section Chief: E. Schwab Branch Director: B. Loomis (12) Division/Group Supervisor: M. Loeffler	Night Ops: T. Ernst Branch Safety: Air Attack: A. Sanchez	


5. Resources Assigned:		** Resources Below in Bold are 12 Hour **					
Resource Identifier	ALS	LWD	Leader	Personnel	Request #	Hours	Reporting Location
STG BEU 9460C			C. Smith	19	E-20065	0700-0700	ICP
ENG SQF 332			R. Betancourt	5	E-22	0700-1900	ICP
ENG BOD 1301			N. Walker	3	E-202	0700-1900	ICP
ENG ZIP 403			B. Bird	7	E-180	0700-1900	ICP
ENG ID MCN 41			R. Ricks	3	E-104	0700-1900	ICP
ENG PVT AAA 182			K. Looking	3	E-182	0700-1900	ICP
STG RRU 9314G			C. Wright	3	C-12	0700-1900	ICP
STG AEU 9279G			D. Garnin	30	C-20009	0700-1900	ICP
W/T PVT E-20173			N. Baldiviez	1	E-20173	0700-0700	ICP
W/T PVT E-20177			R. Hurl	2	E-20177	0700-0700	ICP
W/T PVT E-20178			K. Gray	2	E-20178	0700-0700	ICP
MAS PVT E-20035			P. Leuzinger	2	E-20035	0700-0700	ICP
MAS PVT E-20036			B. Gardner	1	E-20036	0700-0700	ICP
ENG MDF 335			K. Stanley	5	E-103	0700-1900	
ENG MNE 332			L. Sampley	3	E-6	0700-1900	
ENG BDF 13			M. Gomez	5	E-109	0700-1900	
ENG BDF 330			L. Loward	5	E-111	0700-1900	
ENG LNF 332			G. Hamilton	5	E-27	0700-1900	

6. Work Assignments:
 Implement structure defense plan, with an emphasis on perimeter control.
 Construct control lines as direct as possible.
 Insert progressive hose lays.
 Improve and hold established control lines.

7. Special Instructions:
 BRANCH X SOFR WHITE / SOFR-T RYAN (12)
WT PVT E-20277 **D. Castle** **1** **E-20277** **0700-1900**
WT PVT E-20015 **D. Dixon** **1** **E-20015** **0700-1900**
TF Caldor.3 **P. Preston** **0700-1900**

8. Communications

Name	Ch	Function	Rx Freq	Rx Tone	Tx Freq	Tx Tone	Notes
ENF T2	1	COMMAND	171.5250N	156.7	162.7500N	123	LEEK SPRINGS
CDF T26	11	TACTICAL	159.2925N	192.8	159.2925N	192.8	
AVG TAC	14	AIR TO GROUND	164.1375N		164.1375N		
CALCORD	15	MEDICAL	156.0750N	156.7	156.0750N	156.7	MEDICAL COORDINATION
GUARD 20	16	EMERGENCY	168.6250N		168.6250N	110.9	EMERGENCY USE ONLY

9. Prepared by: Name: J. Heald RESL 24 Hr Shift: 8
 Signature:  12 Hr Shift: 49
 ICS 204 Date/Time: 8/20/2021 2200 Total: 81

ASSIGNMENT LIST (ICS 204 WF)

CONTROLLED UNCLASSIFIED
INFORMATION/BASIC

1. Incident Name: <p style="text-align: center;">Caldor Incident</p>	2. Operational Period: Date From: 08/21/21 Date To: 08/22/21 Time From: 0700 Time To: 0700	3. Branch Division <p style="text-align: center;">X L</p>
---	---	---

4. Operations Personnel: Operations Section Chief: E. Schwab Branch Director: B. Loomis (12) Division/Group Supervisor: J. Chester (12)	Night Ops: T. Ernst Branch Safety: Air Attack: A. Sanchez
--	---

5. Resources Assigned:		** Resources Below in Bold are 12 Hour **						
Resource Identifier	ALS	LWD	Leader	Personnel	Request #	Hours	Reporting Location	
ENG SRF 312			E. Johnson	5	E-106	0700-1900	ICP	
ENG BOD 204 <i>412 BLM</i>			W. Burks	5	E-204	0700-1900	ICP	
ENG HTF 451			J. Hart	5	E-181	0700-1900	ICP	
CRW LMU 9224 G			R. Veverka	28	C-13	0700-1900	ICP	
CRW EL CARISO IHC			N. Mendoza	20	C-8	0700-1900	ICP	
CRW ANF Valyermo IHC			M. Ramsted	18	C-7	0700-1900	ICP	
CRW Blue Mountain 5				20	C-15	0700-1900	ICP	
DOZ ENF 24030			L. Benson	2	E-20022	0700-0700	ICP	
DOZ PVT E-20023			D. Spalwn	2	E-20023	0700-0700	ICP	
W/T PVT E-20009			R. Keene	1	E-20009	0700-1900	ICP	
W/T PVT E-20176 <i>→MRB</i>			R. Hurl	2	E-20176	0700-0700	ICP	

6. Work Assignments:
 Implement structure defense plan, with an emphasis on perimeter control.
 Construct control lines as direct as possible.
 Insert progressive hose lays.
 Improve and hold established control lines.

7. Special Instructions:
 BRANCH X SOFR WHITE / SOFR-T RYAN (12)

8. Communications							
Name	Ch	Function	Rx Freq	Rx Tone	Tx Freq	Tx Tone	Notes
ENF T2	1	COMMAND	171.5250N	156.7	162.7500N	123	LEEK SPRINGS
CDF T27	12	TACTICAL	159.3075N	192.8	159.3075N	192.8	
A/G TAC	14	AIR TO GROUND	164.1375N		164.1375N		
CALCORD	15	MEDICAL	156.0750N	156.7	156.0750N	156.7	MEDICAL COORDINATION
GUARD 20	16	EMERGENCY	168.6250N		168.6250N	110.9	EMERGENCY USE ONLY

9. Prepared by: Name:	J. Heald	RESL	24 Hr Shift: 2
	Signature:		12 Hr Shift: 96
ICS 204	Date/Time: 8/20/2021 2200		Total: 108

ASSIGNMENT LIST (ICS 204 WF)

CONTROLLED UNCLASSIFIED
INFORMATION/BASIC

1. Incident Name: Caldor Incident	2. Operational Period: Date From: 08/21/21 Date To: 08/22/21 Time From: 0700 Time To: 0700	3. Branch Division XXX T Page 1 of 1 Tango
--	---	---

4. Operations Personnel:	
Operations Section Chief: E. Schwab Branch Director: N. Hale Division/Group Supervisor: J. Plummer	Night Ops: T. Ernst Branch Safety: Air Attack: A. Sanchez

5. Resources Assigned:		** Resources Below in Bold are 12 Hour **						
Resource Identifier	ALS	LWD	Leader	Personnel	Request #	Hours	Reporting Location	
ENG CNF 335			S. Cox	3	E-26	0700-1900	ICP	
ENG NVO 1876			K. Reidhead	4	E-2	0700-1900	ICP	
ENG BDF 311			A. Rodriguez	5	E-108	0700-1900	ICP	
ENG MDF 345			J. Haddock	5	E-105	0700-1900	ICP	
DOZ MDF 4			E. Allen	2	E-20	0700-1900	ICP	
DOZ PVT E-20179			J. Snyder	3	E-20179	0700-0700	ICP	
W/T PVT E-20174			J. Buchanan	2	E-20174	0700-0700	ICP	
MAST PVT E-58			C. Findleton	1	E-58	0700-1900	ICP	
MAST PVT E -20026			T. Krisman	2	E-20026	0700-1900	ICP	
MAST PVT E -20027			A. Dinatale	1	E-20027	0700-1900	ICP	
SKDGN PVT E-63			C. Haugen	1	E-63	0700-1900	ICP	
<i>DOZ PVT E-20182</i>			<i>A. Miller</i>	<i>3</i>	<i>E-20182</i>	<i>0700-0700</i>		
<i>ENG ENF E313</i>					<i>E-44</i>	<i>0700-1900</i>		
<i>ENG PA 814</i>			<i>S. Bishop</i>	<i>3</i>	<i>E-38</i>	<i>1700-1900</i>		
<i>Kern Valley IHL</i>			<i>K. Clendenen</i>	<i>19</i>	<i>L-2</i>	<i>0700-1900</i>		
<i>PVT PVT 20152</i>			<i>K. Lawless</i>	<i>1</i>	<i>E-20152</i>	<i>0700-1900</i>		

6. Work Assignments:
Construct control lines as direct as possible.
Insert progressive hose lays.
Improve and hold established control lines.

7. Special Instructions:
BRANCH XXX SOFR DIREGOLO / SOFR BARTON (12)

8. Communications							
Name	Ch	Function	Rx Freq	Rx Tone	Tx Freq	Tx Tone	Notes
ENF T2	1	COMMAND	171.5250N	156.7	162.7500N	123	LEEK SPRINGS
CDF T27	12	TACTICAL	159.3075N	192.8	159.3075N	192.8	
A/G TAC	14	AIR TO GROUND	164.1375N		164.1375N		
CALCORD	15	MEDICAL	156.0750N	156.7	156.0750N	156.7	MEDICAL COORDINATION
GUARD 20	16	EMERGENCY	168.6250N		168.6250N	110.9	EMERGENCY USE ONLY

9. Prepared by: Name:	J. Heald	RESL	24 Hr Shift: 2
	Signature:		12 Hr Shift: 11
ICS 204	Date/Time: 8/20/2021 2200		Total: 29

AIR OPERATIONS SUMMARY ICS-220

Incident Name / Number Calder Fire / CA-ENF-024030	Sunrise 6:22	Start 6:52	Cutoff 19:22	Sunset 19:52
General Remarks, Safety Notes, Hazards, Air Operations Special Equipment, etc. TRACK ALL DIPSITE LOCATIONS / NUMBER OF DIPS / GALLONS TAKEN. TRACK ALL DROP LOCATIONS / NUMBER OF DROPS / GALLONS DROPPED ALL GPS DATA TO BE COLLECTED IN DEGREES, MINUTES, DECIMAL MINUTES, FORMAT. AVOID Aerial Application of Retardant / Foam / Agent within 300' of Waterways, Bodies of Water, etc. If Retardant / Foam / Agent is Dropped Within These Areas Immediately Notify the AOB and Provide the Following Information: Lat / Long, Estimated Number of Gallons and a Map Detailing The Area				

Time Prepared 1930	Date Prepared Friday, August 20, 2021	Prepared By CHANCE INWOOD
Shutdown 20:22	Operational Period - Date Saturday August 21, 2021	
Operational Period - Time 0700-2100		

Helibase Information Name Placerville Latitude 38 43.478 Longitude 120 45.180 Name Jackson Latitude 38 22.470 Longitude 120 47 520 (use page 2 if needed)	Rescue Ship Information Day Hoist Name SAC METRO Phone 916-228-3035 Make/Model UH1H Location MCC Night Hoist Name SAME Phone Make/Model Location
---	---

Request #	Polygon	Altitude	Centerpoint	NOTAMS	Frequency	Name	Position	AM / FM	Tone	TX	RX	Tone	TX	AM / FM	Position	Name	Phone	Trainees	Phone
A-25	NM	9,500 MSL	38° 38.87' Lat 120° 26.37' Long	8/6883	118.6250	C. Inwood (T)	AOBD	FM	OST	162.7500	171.5250	156.7(T-6)	162.7500	FM	AOBD	C. Inwood (T)	209-694-5333		
						F. Abril (T)	ASGS	FM		164.1375	164.1375		164.1375	FM	ASGS	F. Abril (T)	951-757-5487		
						R. Johnson	HEBM	AM		124.0750	124.0750		124.0750	AM	HEBM	R. Johnson	530-340-3099		
								FM		167.9500	167.9500		167.9500	FM					
								FM		163.3375	163.3375		163.3375	FM					
								AM		126.3750	126.3750		126.3750	AM					
								AM		118.6250	118.6250		118.6250	AM	HLCO	D. Phillips	209-770-0904		
								AM		123.7250	123.7250		123.7250	AM	HLCO	F. Burris (NIGHT)	805-340-0408		
								FM		163.1000	163.1000		163.1000	FM					
								FM		168.3500	168.3500		168.3500	FM					
								FM		156.0750	156.0750	156.7 (6)	156.0750	FM	ATGS	A. Ihle	805-364-1002		
								FM		168.6250	168.6250	110.9 (1)	168.6250	FM	ATGS				

HELICOPTERS (Use page 2 if Needed)													
FAA #	Type	Make/Model	Helibase	Avail	Start	Remarks	FAA #	Type	Make/Model	Helibase	Avail	Start	Remarks
659RH	I	KAMAN 1200	PVF	0800	0800	BUCKET	76CG	I	S-76	JAQ	0800	0800	HLCO
1048Y	I	S-61	PVF	0800	0800	TANK	42CU	I	CH-47	JAQ	0800	0800	TANK
3173U	I	S-61	PVF	0800	0800	TANK	43CU	I	CH-47	JAQ	0800	0800	TANK
722HT	I	CH-54	PVF	0800	0800	TANK	261CG	I	S-61	JAQ	0800	0800	TANK
133TH	I	UH-60	PVF	0800	0800	BUCKET							
516	II	BELL 212 HP	PVF	0800	0800	BUCKET	GUARD 862	I	UH-60	MHR	1100	1100	BUCKET
205PT	II	BELL 205 A++	PVF	0800	0800	BUCKET	GUARD 863	I	UH-60	MHR	1100	1100	BUCKET
11NE	II	UH-1B	PVF	0800	0800	BUCKET	GUARD 864	I	UH-60	MHR	1100	1100	BUCKET
910BR	III	BELL 206 L4	PVF	0800	0800	RECON/BUCKET	GUARD 865	I	UH-60	MHR	1100	1100	BUCKET
509	II	BELL 209	PVF	0800	0800	RECON/INTEL	GUARD 866	I	CH-47	MHR	1100	1100	BUCKET

FIXED WING (Use Page 2 if Needed)													
FAA #	Type	Make/Model	Base	Avail	Start	Remarks	FAA #	Type	Make/Model	Base	Avail	Start	Remarks
AA17		AC690	GOO	0800	0800	ATGS							
AA07		AC690	MCC	0800	0800	ATGS							

MEDICAL PLAN (ICS 206)

1. Incident Name: Caldor	2. Operational Period:	Date From: 8/21/21	Date To: 8/22/21
		Time From: 700	Time To: 700

3. Medical Aid Stations:			
Name	Location	Contact Number/Freq	Physician
CAL MAT	ICP		Yes
MERT	ICP		Yes
Private Ambulance	ICP		ALS Yes

4. Transportation (indicate air or ground):			
Ambulance Service	Location	Contact Number	Level of Service
Sac Metro Fire 24Hr/Hoist (AIR)	10545 Armstrong, Mather	Caldor Comm	ALS
Private Ambulances (GROUND)	All Branches	Caldor Comm	ALS
Cal Star (AIR)	Auburn/So.Lake Tahoe	Caldor Comm	ALS
REMS 18	All Branches	Caldor Comm	ALS

5. Hospitals:							
Hospital Name	Address,	Contact Number(s)/ Frequency	Travel Time		Trauma Center	Burn Center	Helipad
	Lat & Long Helipad		Air	Ground			
Marshal Medical Center	1100 Marshal Way, Placerville 95667	530-622-1441	5 Min	10 Min	Level 3	<input type="checkbox"/>	<input type="checkbox"/>
Sutter Amador Hospital	200 Mission Blvd, Jackson 38° 21.05'N Long 120 45.85'W	209-223-7500	30 Min	1.5 Hrs	Level 4	<input type="checkbox"/>	<input checked="" type="checkbox"/>
Sutter Roseville	1 Medical Plaza Dr. Roseville Lat 38° 45.97'N Long 121 14.87' W	916-781-1200	45 Min	3 Hrs	Level 2	<input type="checkbox"/>	<input checked="" type="checkbox"/>
Barton Memorial	2170 South Ave. So Lake Tahoe Lat.38° 54.67'N Long 119 59.80' W	916-734-3636	40 Min	1.5 Hrs	Level 3	<input type="checkbox"/>	<input checked="" type="checkbox"/>
UC Davis Medical Center	2315 Stockton Blvd. Sacramento Lat 38° 33.28'N Long 121 27.35'W	916-734-3636	55 Min	1.5 Hrs	Level 1	<input checked="" type="checkbox"/>	<input checked="" type="checkbox"/>

6. Special Medical Emergency Procedures	
<p>Line Emergency Crew Supervisor will contact Division Supervisor with patient complaint/condition and location.</p> <p>- Division Group Supervisor Contacts: 1. Closest EMS resource 2. Meriposa ECC <i>Caldor</i></p> <p>- Communications Unit Contacts: 1. Ground or Air ambulance as requested. 2. Operations 3. Safety</p> <p>- Division Supervisor or designee will serve as point of contact and run medical emergency on assigned channel. 1. A pre-assigned tactical frequency (i.e. CALCORD) should be used for IWI and only for duration of the emergency.</p> <p>- Communications Unit will clear the Command channel for emergency traffic as needed for duration of the need.</p> <p>- Medical Unit contacts 1. Communications 2. Operations 3. Crew Supervisor</p>	<p>Injury Reporting Procedures</p> <p>Nature of Injury: _____ Location of Patient: _____ Point of Contact: _____ Transportation Requested by: Air _____ Ground _____ Point of Pick-Up: _____ Lat: _____ Long: _____ Patient Unit ID: _____ Is an EMT with Patient: Yes _____ No _____ Age: _____ Sex: Male _____ Female _____</p> <p>ALL EMERGENCIES—Secure the area and identify witnesses for later investigation. Keep an accurate log of events. **IN CAMP EMERGENCY** (619)818-8437</p>


Check box if aviation assets are utilized for rescue. If assets are used, coordinate with Air Operations.

7. Prepared by:	J. Segura	Signature: <i>Jorge H Segura</i>
------------------------	-----------	---

8. Approved by:	J. Novak	Signature: <i>Jan Novak</i>
------------------------	----------	------------------------------------

ICS 206	NIMS IAP	Date/Time:	8/20/2021 1900
----------------	----------	-------------------	----------------

ICS 205 - INCIDENT RADIO COMMUNICATIONS PLAN

1. Incident Name: Caldor Incident		2. Date/Time Prepared Date: 08/20/2021 Time: 1600		3. Operational Period: Date From: 08/21/21 Time From: 0700		Date To: 08/22/21 Time To: 0700		
4. Communications								
Ch#	Function	Name	Assigned To	Rx Freq	Rx Tone	Tx Freq	Tx Tone	Notes
1	COMMAND	ENF T2	ALL BRANCHES	171.5250N	156.7	162.7500N	123.0	LEEK SPRINGS
2	COMMAND	ENF T5	ALL BRANCHES	171.5250N	156.7	162.7500N	146.2	PINE HILL
3	COMMAND	ENF T1	ALL BRANCHES	171.5250N	156.7	162.7500N	110.9	ALDER RIDGE
4								
5								
6								
7	TACTICAL	NIFC T1	DIV F / DIV R	168.0500N		168.0500N		
8	TACTICAL	NIFC T6	DIV D / DIV P	166.7750N		166.7750N		
9	TACTICAL	NIFC T3	DIV A / DIV N	168.6000N		168.6000N		
10	TACTICAL	NIFC T7	DIV H / DIV W	168.2500N		168.2500N		
11	TACTICAL	CDF T26	DIV J / DIV U	159.2925N	192.8	159.2925N	192.8	
12	TACTICAL	CDF T27	DIV L / DIV T	159.3075N	192.8	159.3075N	192.8	
13	A/G CMD	A/G CMD	ALL BRANCHES	167.9500N		167.9500N		
14	AIR TO GROUND	A/G TAC	ALL BRANCHES	164.1375N		164.1375N		
15	MEDICAL	CALCORD	ALL BRANCHES	156.0750N	156.7	156.0750N	156.7	MEDICAL COORDINATION
16	EMERGENCY	GUARD 20	ALL BRANCHES	168.6250N		168.6250N	110.9	EMERGENCY USE ONLY
17								
18								
19								
20	AIRGUARD	GUARD 20	ALL BRANCHES	168.6250N		168.6250N	110.9	EMERGENCY USE ONLY
5. Special Instructions								
<p>TO CONFIRM YOU HAVE THE MOST CURRENT CLONE, ENSURE YOUR DISPLAY OF CHANNEL 16 OR 20 MATCHES CHANNEL 16 OR 20 OF THE 205 - HEIGHT AND POWER ARE KEY WHEN USING RADIOS; BE AT A HIGH POINT, USE A MOBILE IF POSSIBLE, AND USE RADIO RELAYS WHEN NEEDED</p>								
6. Prepared by (Communications Unit Leader): Name: J. BROOKS COML				Signature: 		Date/Time: 08/20/21 1600		
ICS 205 - CONTROLLED UNCLASSIFIED INFORMATION//BASIC								

Caldor Ground Support

2441 Headington Road
Placerville, CA 95667

Jeremy Christofferson
(951) 287-0886

Repair Location

El Dorado Shop
5660 Mother Lode Dr
Placerville, CA 95667

Scott Hogan
(530) 708-2730

Fuel Location

Dawson Oil Company
321 Pleasant Valley Rd
Diamond Springs, CA 95619

Fuel is open 24 hours with attendants, DEF and Oil

Transportation Needs

Contact: Jeremy Christofferson
(951) 287-0886



FINANCE MESSAGE

FEDERAL RESOURCES

- **Refer to Caldor Federal Finance Procedures**

CAL FIRE TIME UNIT (Personnel and Hired Equipment)

- **CAL FIRE PERSONNEL** – Ensure you have started your eFC-33's and update after each shift. Please make sure Epay schedules are up to date.
- **HIRED EQUIPMENT SUPPLIERS** – Check-in with the TIME Unit and drop off your agreements.

DIVISION / GROUP - LINE SUPERVISORS

- **Please turn in hired equipment shift tickets at the end of each shift.**
- **SHIFT TICKET BOOKS** – Available in the TIME Unit for agency line supervisors only.

COMP / CLAIMS

- **Damage Claims (suppression, property, vehicle)**
 - **ICS-213. We will need location, description of damages, and your contact information.**

Dedicated to Effective, Efficient, and Professional Service



CAL FIRE STRIKE TEAM WORKSHEET



INCIDENT NAME:	
INCIDENT #:	
STRIKE TEAM ID:	

COMMIT DATE:	
COMMIT TIME:	

REQUEST #	STRIKE TEAM LEADER NAME	CLASSIFICATION	CELL #	DUTY DAYS	HOME STATION
EQUIP #					
ID X #.					

REQUEST #	PERSONNEL NAMES	CLASSIFICATION	CELL #	DUTY DAYS	HOME STATION
EQUIP #					
ID X #.					

DOZER/CHAIN SAW HOURS:	DATE: HRS:	DATE: HRS:	DATE: HRS:	DATE: HRS:	DATE: HRS:
-------------------------------	------------	------------	------------	------------	------------

REQUEST #	PERSONNEL NAMES	POSITION	CELL #	DUTY DAYS	HOME STATION
EQUIP #					
ID X #.					

DOZER/CHAIN SAW HOURS:	DATE: HRS:	DATE: HRS:	DATE: HRS:	DATE: HRS:	DATE: HRS:
-------------------------------	------------	------------	------------	------------	------------

REQUEST #	PERSONNEL NAMES	POSITION	CELL #	DUTY DAYS	HOME STATION
EQUIP #					
ID X #.					

DOZER/CHAIN SAW HOURS:	DATE: HRS:	DATE: HRS:	DATE: HRS:	DATE: HRS:	DATE: HRS:
-------------------------------	------------	------------	------------	------------	------------

REQUEST #	PERSONNEL NAMES	POSITION	CELL #	DUTY DAYS	HOME STATION
EQUIP #					
ID X #.					

DOZER/CHAIN SAW HOURS:	DATE: HRS:	DATE: HRS:	DATE: HRS:	DATE: HRS:	DATE: HRS:
-------------------------------	------------	------------	------------	------------	------------

REQUEST #	PERSONNEL NAMES	POSITION	CELL #	DUTY DAYS	HOME STATION
EQUIP #					
ID X #.					

DOZER/CHAIN SAW HOURS:	DATE: HRS:	DATE: HRS:	DATE: HRS:	DATE: HRS:	DATE: HRS:
-------------------------------	------------	------------	------------	------------	------------

DEMOB

RETURN DATE: _____

RETURN TIME: _____

SHIFT TICKET EXAMPLE

EMERGENCY SHIFT TICKET and EVALUATION FORM					Contractor Name DOZER DUDE	
Incident or Project Name CALDOR		Incident Number CAENF024030	Request Number E#		Operator #1 BOB SMITH	Operator #2 TOM SMITH
Agreement Number XXX - 000000 - 00						
Equipment Make CAT		Equipment Model / Type D6XM				
Serial Number 111111		Licence Number 111111				
Equipment Use (Circle) Hours Days / Miles					Operator Furnished By: <input checked="" type="checkbox"/> Contractor <input type="checkbox"/> Government	
Date Mo / Day Start Stop Work Assignment					Operating Supplies Furnished By: <input checked="" type="checkbox"/> Contractor <input type="checkbox"/> Government	
8/18 0700 2400 17 DIV M					Equipment Status <input checked="" type="checkbox"/> Inspected <input checked="" type="checkbox"/> Under Agreement	
8/19 0001 0700 7 DIV M					Released by Government <input type="checkbox"/> Withdrawn by Contractor <input type="checkbox"/>	
Remarks/Comments ** NO DAMAGE/ NO CLAIMS						
Vendor Rating Poor* Avg. Good Exc. N/A					Govt. Rep. Name and Position - PRINT Mike Weber	
Met Performance Expectations _____					Govt. Rep. Signature <i>Mike Weber</i>	
Equipment in Safe Working Condition _____					Contractor Signature <i>Bob Smith</i>	
Operator Skill Level _____					Date 07/13/21 Time 0800	
Operates Safely _____					Overall Performance _____	
Operator's Cooperation Level _____					* NOTE: Any rating of POOR requires an explanation in Comment Section.	
Overall Performance _____					**Final evaluation or for more documentation, use an ICS Form 230 or equivalent.	
Pink - Finance Blue - Home Unit HE Coordinator Yellow - Vendor White - Govt Representative						

EMERGENCY SHIFT TICKET and EVALUATION FORM					Contractor Name DUDE TRANSPORT	
The responsible Government Officer will complete this form each shift.						
Incident or Project Name CALDOR		Incident Number CAENF024030	Request Number E # Here		Operator #1 BOB SMITH	Operator #2 TOM SMITH
Agreement Number XXX - 000000 - 00						
Equipment Make TRANSPORT/ KENWORTH		Equipment Model / Type COZAD TRAILER /26 WHEELS				
Serial Number 1XP3ESMP14239012		Licence Number 9999999				
Equipment Use (Circle) Hours Days / Miles					Operator Furnished By: <input checked="" type="checkbox"/> Contractor <input type="checkbox"/> Government	
Date Mo / Day Start Stop Work Assignment					Operating Supplies Furnished By: <input checked="" type="checkbox"/> Contractor <input type="checkbox"/> Government	
8/18 0700 2400 17 DIV M					Equipment Status <input checked="" type="checkbox"/> Inspected <input checked="" type="checkbox"/> Under Agreement	
8/19 0001 0700 7 DIV M					Released by Government <input type="checkbox"/> Withdrawn by Contractor <input type="checkbox"/>	
Remarks/Comments ** NO DAMAGE/ NO CLAIMS						
Vendor Rating Poor* Avg. Good Exc. N/A					Govt. Rep. Name and Position - PRINT Mike Weber	
Met Performance Expectations _____					Govt. Rep. Signature <i>Mike Weber</i>	
Equipment in Safe Working Condition _____					Contractor Signature <i>Bob Smith</i>	
Operator Skill Level _____					Date 07/13/21 Time 0800	
Operates Safely _____					Overall Performance _____	
Operator's Cooperation Level _____					* NOTE: Any rating of POOR requires an explanation in Comment Section.	
Overall Performance _____					**Final evaluation or for more documentation, use an ICS Form 230 or equivalent.	
Pink - Finance Blue - Home Unit HE Coordinator Yellow - Vendor White - Govt Representative						

Turn shift tickets into Time Unit.

CALDOR FEDERAL FINANCE PROCEDURES



Finance Email: 2021.caldor.finance@firenet.gov

Finance Hotline: 530-330-5450

Directions for emailing Documents:

Federal Contract Resources	Federal Overhead and Crews
Send To: 2021.caldor.finance@firenet.gov SUBJECT: <i>Include Key Word: Equipment</i>	Send To: 2021.caldor.finance@firenet.gov SUBJECT: <i>Include Key Word: Time</i>

DOCUMENTS TO EMAIL TO FINANCE

	Federal Overhead and Crews	Regular Government Personnel & ADs attachments: @Check-In: Crew Manifests, MOUs, or Cooperative Agreement (if applies), AD Casual Hire Sheet/RO Daily: Crew Time Report (CTR), Shift Ticket (<i>when applies</i>), receipts (fuel issues, travel receipts, etc.) @Demob: Signed OF288, Final Equipment Use Invoice
	Federal Contract Resources	Private: Contractor Attachments: @Check-In: Resource Order, Full Contract/Agreement, Certifications (<i>if required</i>), Pre-Inspection Daily: SHIFT Tickets, receipts (fuel issues, claims, etc.) @Demob: Contractor Evaluations, Final Shift Tickets and receipt for Addition/Deductions, Post-Inspection, Final Signed Invoices

FEDERAL FINANCE DEMOB PROCEDURES

All Resources will be sent their DRAFT OF-288/OF-286's via the Finance email. 12 hours will be provided to allow the resource to review their document and reply back to Finance with the statement "No Corrections Necessary" or a description of any issues. After Finance receives the email, any discrepancies will be resolved. Next, the resource is sent the **FINAL DOCUMENT** for signature. They will then email the signed document back to Finance, if able. Finance will then sign the **FINAL DOCUMENT** and email it back to the resource. This completes the process.



PUBLIC INFORMATION



Official Sources of Public Information

Incident Information Line: (530)303-2455	Incident Media Line: (530)497-0315
Incident Website: www.fire.ca.gov/incidents	Email List Sign Up:



@CALFIREAEU
@EldoradoNF



@CALFIRE_AEU



@CALFIREAEU
@EldoradoNF



INCIDENT
INFORMATION



EVACUATION
MAP

STATUS	
Incident Start Date: August 14, 2021	Total Personnel 1558
Acreage: 82,444	Containment: 0%

Media Law

The California State Penal Code Section 409.5(d) allows the news media to enter scenes of disaster, riot, or civil disturbance. Properly identified members of the news media should not be restricted from entering locations specified within the code. However, this does not include crime scenes, and does not imply that the news media may interfere with incident operations while they are in the areas of concern. If entering such a location that is hazardous, they should be advised; media access cannot be prevented for safety reasons unless their presence would impede CAL FIRE's mitigation of the incident or the disturbing of evidence. When working around the media, remember:

- Media is not permitted on private property without the property owners permission.
- If approached and questioned by the media and or the public, talk about your assignment or task at hand. Remember to wear all the appropriate PPE.
- If needed call for an incident PIO through the chain of command.
- Never speculate, give opinions or speak for others.
- There is no such thing as an "off the record" comment.

CAL FIRE Social Media Policy (Social Media 0691)

Social Media is increasingly being used by public agencies, the media as well as the public. This form of communication continues to grow rapidly in order to supply the instant gratification needs of society. Therefore when on a CAL FIRE incident you will adhere to the CAL FIRE Social Media Policy, 0691. You can get further information about the CAL FIRE Social Media Policy from the incident Public Information Officer. While assigned to the incident, there will be no posting of:

- Inappropriate information or materials, no opinions, no endorsements, inappropriate pictures or videos

Lost and Found

The Information Section will manage Lost and Found items for the incident. If you have lost an item leave your contact information and what you have lost at the Information Section. If you have found an item on the incident bring the item to the Information Section with your contact information as well.

Incident Base Camp Mailing Address
c/o Public Information Office/Trailer
102 Placerville Dr.
Placerville, CA 95667



INCIDENT PEER SUPPORT:



Team members are available on the incident for any peer support related needs. The best way to get a hold of them is to call them directly or stop by the ESS Trailer

In addition, there is an onsite clinician available to meet on an individual and/or group basis

Jeremy Sanders 916-281-6472

John Kiszka 530-448-2402

or

CAL FIRE 24 Hr. Peer Support/Helpline

916-445-4337

Below are other Team Members not on the incident who can also be contacted directly:

Tony Howard 916-224-1543

Mike Aiello 916-584-0548

Warren Parrish 916-823-6641

Nikole Schutz 916-709-0434

Amber Henderson 805-794-1690

Amy Head 916-956-3277

Chris Lomanto 916-247-6974

Connie Quarisa 916-213-8697

Noelle Bahnmler 916-661-0011

Krissy Shaefer 619-592-6337

Shawna Powell 530-717-0667

Mike Deleo 916-661-0724

Watch for the signs and symptoms of stress in yourself and the people around you. Try and stay positive and get much needed rest when you can. We can do this, together!

A message to our firefighters from **ASHLEY IVERSON.**



Stay Healthy, Stay Alert and Stay Strong!



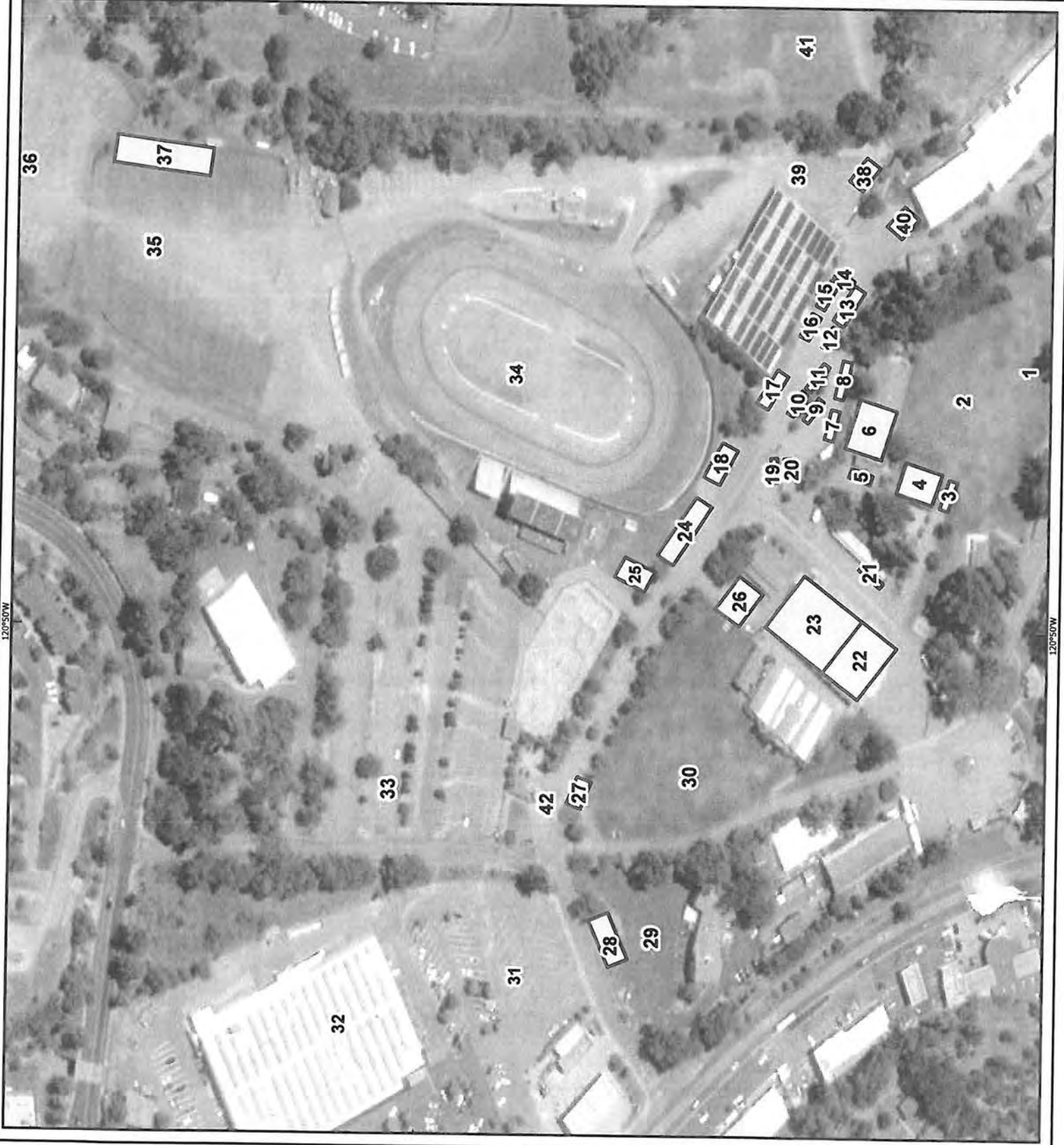
FACILITIES MAP
Caldor Incident
 CA-ENF-024030
 August 20, 2021

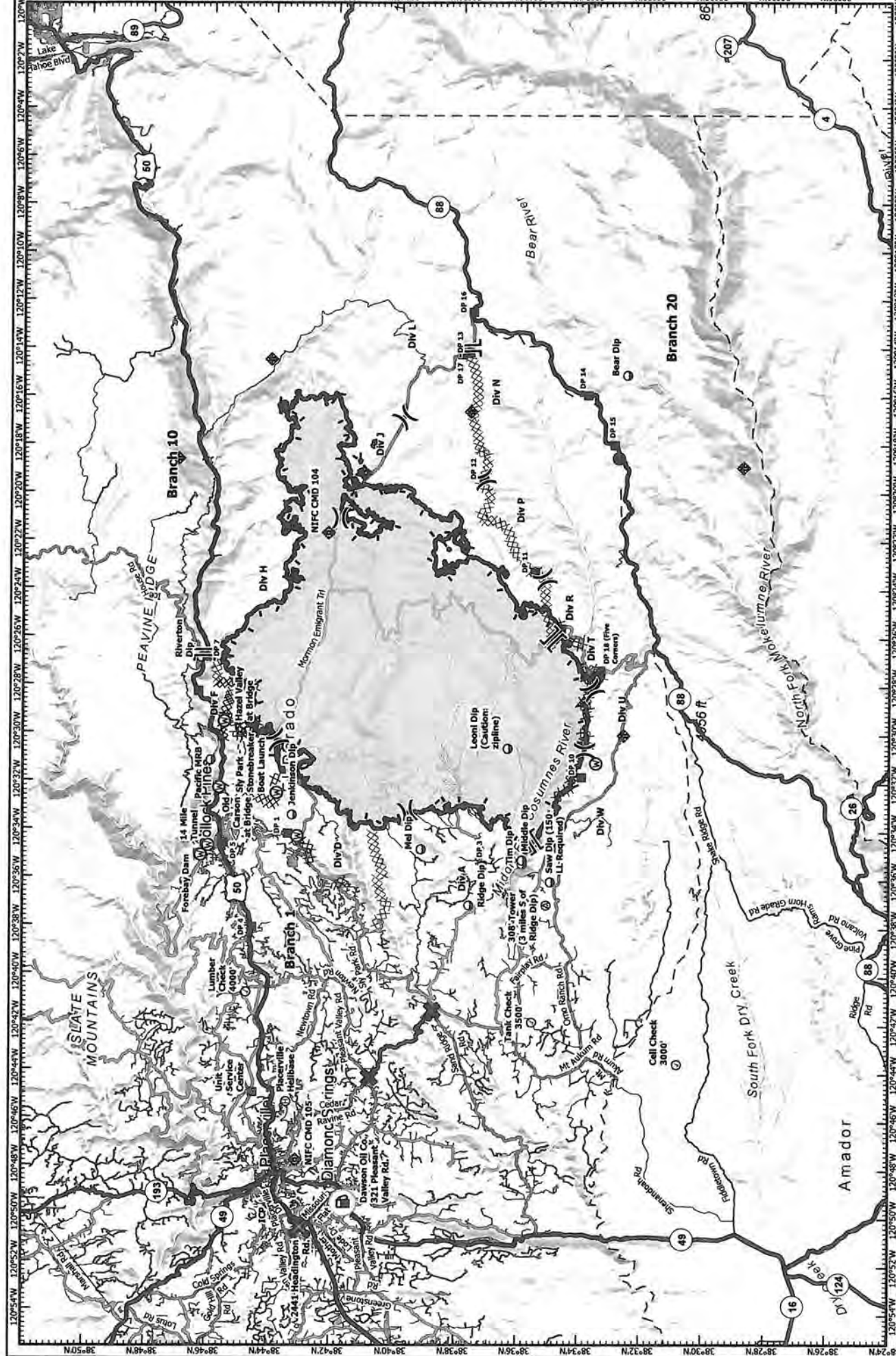
- 1 Tent sleeping
- 2 Briefing
- 3 Finance
- 4 Finance
- 5 GISS
- 6 Coop
- 7 Motel
- 8 Medical
- 9 Logs
- 10 Ordering
- 11 Safety
- 12 Air ops
- 13 IC
- 14 PG & E
- 15 Ops
- 16 IMET/FBAN
- 17 Coms
- 18 Sheriff
- 19 ESS
- 20 Copy
- 21 FUDL
- 22 Plans
- 23 Feeding
- 24 IT
- 25 Lunch/water/ice
- 26 Cal Mat
- 27 Liason
- 28 PIC
- 29 Media
- 30 Overhead parking
- 31 Heavy equipment overflow
- 32 Raley's
- 33 Ground support
- 34 Western shelter tent sleeping
- 35 Engine & dozer parking
- 36 Inmate sleeping
- 37 Shower/laundry
- 38 Supply
- 39 Overhead overflow parking
- 40 Saw shop
- 41 Vendor
- 42 Main gate

0 50 100 150 200
 US Feet

DISCLAIMER: This map is for informational purposes only. It is not intended for use in any legal proceeding. The information on this map is based on the best available information and is subject to change without notice. The information on this map is not a guarantee of accuracy or any other performance.

MT 6 028
 8/22/21
 6:32 PM





TRANSPORTATION MAP
Caldor Incident
CA-ENF-024030

- Major Roads
- Minor Roads
- Highways
- Off-Site Fuel
- Ground Support
- DO NOT TRAVEL
- Bucks Bar Rd

TRANSPORTATION MAP
Caldor Incident
CA-ENF-024030

Datum: NAD 83 1:300,000

Miles 0 2 1/2 5

THIS MAP IS THE PROPERTY OF CAL FIRE. IT IS TO BE USED FOR THE PURPOSES OF THE CAL FIRE INCIDENT MANAGEMENT SYSTEM (IMS). IT IS NOT TO BE REPRODUCED OR TRANSMITTED IN ANY FORM OR BY ANY MEANS, ELECTRONIC OR MECHANICAL, INCLUDING PHOTOCOPYING, RECORDING, OR BY ANY INFORMATION STORAGE AND RETRIEVAL SYSTEM. CAL FIRE IS NOT RESPONSIBLE FOR ANY DAMAGE TO PERSONS OR PROPERTY THAT MAY OCCUR AS A RESULT OF USING THIS MAP.

MAP 5.020
 02/2022
 5:07 PM

