

INCIDENT ACTION PLAN

CALDOR INCIDENT

CA-ENF-024030
P5N8GM21

Friday



OPERATIONAL PERIOD

8/27/2021 0700
to
8/28/2021 0700



INCIDENT OBJECTIVES (ICS 202)

1. Incident Name: <p style="text-align: center;">Caldor Incident</p>	2. Operational Period:	Date From: 8/27/2021 Time From: 0700	Date To: 8/28/2021 Time To: 0700
--	-------------------------------	---	-------------------------------------

3. Objective(s):

- Management Objectives**
- Provide for emergency personnel and public safety at all times.
 - Ensure COVID-19 precautions and best practices are met at all times.
 - Protect property, improvements, and infrastructure.
 - Ensure coordinated, timely and accurate release of public information.
 - Foster and maintain relationships with all cooperators and stakeholders.
 - Protect economic, natural, cultural and heritage resources.
 - Maintain fiscal accountability and keep costs commensurate with values at risk.

- Control Objectives**
- Keep the fire North of HWY 88 and Shake Ridge Rd
 - Keep the fire South of Wentworth Springs Rd
 - Keep the fire East of E16 and Fiddletown Rd
 - Keep the fire West of HWY 89

- General Situational Awareness:**
- Steep and rugged terrain, critically dry and receptive fuel beds, active area for fire history and drought stressed trees.
 - In the COVID-19 environment, high density populations or large groups are particularly at risk. To help protect yourself, your family and to ensure all employees return home safely, make sure to practice social distancing.
 - Enhanced hygiene (especially handwashing), PPE & monitoring practices help limit the infection rate of first responders.

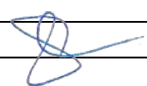
5. Site Safety Plan Required? Yes No

Approved Site Safety Plan(s) Located at:

- 6. Incident Action Plan**
- | | | | |
|---|--|--|---|
| <input checked="" type="checkbox"/> ICS 203 | <input checked="" type="checkbox"/> ICS 220 | <input checked="" type="checkbox"/> Peer Support | <input checked="" type="checkbox"/> Water Tender Travel Map |
| <input checked="" type="checkbox"/> ICS 204 | <input checked="" type="checkbox"/> PIO Message | <input checked="" type="checkbox"/> Facilities Map | <input checked="" type="checkbox"/> Travel Map |
| <input checked="" type="checkbox"/> ICS 205 | <input checked="" type="checkbox"/> Weather Forecast | <input checked="" type="checkbox"/> eFC-33 Input Form | <input checked="" type="checkbox"/> Base Camp Maps |
| <input checked="" type="checkbox"/> ICS 206 | <input checked="" type="checkbox"/> Fire Behavior | <input checked="" type="checkbox"/> Shift Ticket Example | <input type="checkbox"/> Fire Suppression Repair Plan |
| <input checked="" type="checkbox"/> ICS 208 | <input type="checkbox"/> Training Message | <input checked="" type="checkbox"/> ICS 214 | <input type="checkbox"/> |

7. Prepared By:	S. Sherwood	Position/Title: PSC	Signature:
8. Approved by Incident Commander:	D. Martin	Signature:	

ORGANIZATION ASSIGNMENT LIST (ICS 203)

1. Incident Name: Caldor Incident		2. Operational Period: Date From: 8/27/2021 Time From: 0700		Date To: 8/28/2021 Time To: 0700	
3. Incident Commander(s) and Command Staff:			7. Operation Section:		
IC/UC's	J. Veik / J. Reinarz / D. Martin (T)		Operations	E. Schwab / B. Monday	
Deputy	M. Marcucci / J. Janssen (T)		Deputy Operations	S. Lane / C. Bogan (T)	
Safety Officer	J. Buchmeier / J. Rabuck / J. Novak		Night Ops	T. Ernst	
Information Officer	R. Brocchini / K. Greene / R. Lubben				
Liaison Officer	J. Kiszka / M. Watson (T)				
4. Agency/Organization Representatives:			Branch	I	D. Esades
USFS AREP	J. Marsolais		Division/Group	A	P. Byde
Cal Fire AREP	M. Blankenheim		Division/Group	D	B. Egan / S. Forman (T)
EDSO	G. Almos		Division/Group	F	P. Lohan
SPI	T. Tate		Division/Group		
PG&E	M. Webb		Branch	X	M. Wallen / S. Long (T)
COVID-19 Advisor	S. Hall		Division/Group	G	I. Stevens / S. Watkins (T)
EMSAA	B. Gates		Division/Group	H	A. Estabrook
Grizzly Flats CSD	J. Lauther		Division/Group	I	M. Loeffler (12) / Porazzo (T) (12)
Lake Valley Fire Dist	B. Zlendick		Division/Group	Contingency	
IBA	J. Bennett		Branch	XV	B. Loomis (12)
Amador County Sheriff	J. Navarre		Division/Group	J	B. Stewart / L. Brown (T)
Placerville PD	J. Wren		Division/Group	L	J. Chester (12) / K. Perreault (T) (12)
CCC	H. Garcia / L. Setzer-Gonzalez		Division/Group	Contingency	
CHP	R. Hatfield		Division/Group		
Cal Trans	G. Duffy		Branch	XX	
BLM	J. Martinez		Division/Group	N	W. Almand (12)
Cal OES	K. Bailey		Division/Group	P	
AT&T	K. Young		Division/Group	R	J. Plummer (12) / R. Hamly (T) (12)
El Dorado Irrigation Dist.	D. Corcoran		Division/Group		
5. Planning Section:			Branch	XXX	N. Hale
Chief	S. Sherwood / G. Garcia		Division/Group	T	P. Preston (12) / S. Cox (T) (PM)
Deputy	D. Scheurich (T) / D. Carter		Division/Group	U / W	A. Sigona (12) / F. Burrows (T) (12)
Resource Unit	J. Heald / M. Thomas / J. Anderson / B. Torosian		Division/Group		
Situation Unit	I. Crossley / J. Abeel D. Van Goidsenhoven		Division/Group	El Dorado 1	
Demobilization Unit	J. Perez (T)		Division/Group	El Dorado 2	T. Thane (12)
GISS	C. Poli		Staging Area	Fresh Pond	D. Hames (12)
FBAN	S. Volmer		Division/Group		
IMET	J. Dudley		Division/Group		
Hired Equipment Tech Spec.	C. Myers / M. Meirinho (T)		Air Operations Branch:		Director: T. Smith / C. Inwood (T)
Crew Tech Spec.	J. Rafferty		Air Support Group Supervisor		F. Abril (T)
ENF Resource Advisors	J. House / J. Serin / K. Marti		Air Tactical Group Supervisor		A. Sanchez
6. Logistics Section:			Helibase Manager		R. Johnson
Chief	S. Dohman / Z. Cunningham				
Deputy Chief	J. Warden (T) / D. Marion		8. Finance/Administration Section:		
Supply Unit	P. Lee / B. Luiz (T)		Chief	S. Hogan / D. Reid	
Facilities Unit	J. Finley		Deputy Chief	G. Belk	
Ground Support Unit	J. Christofferson		Time Unit	J. Navarro / J. Andrade (T)	
Communications Unit	J. Brooks		Procurement Unit	M. Lamonica / H. Horn (T)	
Medical Unit	J. Segura / M. Hnat		Comp/Claims Unit	B. Stirton	
Motel Unit	J. Tomsich / B. Strohmayer		Cost Unit	J. Tapia	
Food Unit	M. Riveria / M. Wong (T) / B. Brewer (T)				
Prepared By: Name:	S. Sherwood	Position/Title:	PSC	Signature: 	
ICS 203		Date/Time:	8/26/2021 2300 hours		



INCIDENT Weather Forecast



FORECAST NO: 9
PREDICTION FOR: 24 Hour Shift
SHIFT DATE: 08/27/21
FORECAST ISSUED: 08/26/21 1700

NAME OF FIRE: Caldor
UNIT: USFS Eldorado NF
SIGNED: James Dudley
Incident Meteorologist

WEATHER DISCUSSION: High pressure will remain over the fire area through Sunday before an area of low pressure arrives on Monday. Winds aloft and over the ridge tops will remain light for the next couple of days before southwest flow returns late Sunday. Terrain influenced upslope and downslope conditions will prevail with gusty conditions in localized wind favored areas. Smoke and inversion conditions will predominate at night through the morning hours before inversions lift and break in the afternoon. Dry air will remain locked in place through Sunday with daytime humidity values falling to the upper single digits at some locations. Nighttime humidity recoveries will also be poor. Temperatures will trend upward through the weekend.

. FRIDAY . . .

Sky/weather.....Areas of smoke with inversion breaking by 1100 otherwise sunny.
Max temperature.....70-80 Branches 10,15 and 20 and 82-92 Branches 1 and 30.
Min humidity.....9-14 percent.
Wind (20 ft).....
Slope/valley.....Downcanyon 2-6 mph through 0900 then becoming upslope/upcanyon 5-9 mph with gusts to 15 mph through the afternoon. Gusts to 20 mph along the Highway 50 corridor.
Ridgetop.....West 4-7 mph.
Mixing height.....Near surface increasing to around 6500 ft AGL.
Transport winds.....Southwest around 5 mph.

. FRIDAY NIGHT . . .

Sky/weather.....Mostly clear. Areas of smoke.
Min temperature.....52-62 Branches 10,15 and 20 and 63-73 Branches 1 and 30.
Max humidity.....20-25 percent except 40-45 under inversion.
Wind (20 ft).....
Slope/valley.....Downslope/downcanyon 3-7 mph.
Ridgetop.....East-southeast 7-12 mph.
Mixing height.....Lowering to near surface.
Transport winds.....East around 6 mph.

. SATURDAY . . .

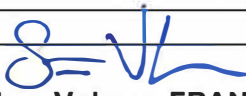
Sky/weather.....Areas of smoke with inversion breaking by 1100 otherwise sunny.
Max temperature.....73-83 Branches 10,15 and 20 and 85-95 Branches 1 and 30.
Min humidity.....10-15 percent.
Wind (20 ft).....
Slope/valley.....Downcanyon 2-6 mph through 0900 then becoming upslope/upcanyon 6-10 mph with gusts to 16 mph through the afternoon. Gusts to 22 mph along the Highway 50 corridor.
Ridgetop.....West-southwest 5-9 mph.
Mixing height.....Near surface increasing to around 6500 ft AGL.
Transport winds.....Southeast around 10 mph.

Incident Weather Station Data - SCAN Code with Smart Phone

- Branch 1: Pine Tree Rd (TR113), Hawkeye Rd (PG433)
- Branch 10: Sugarloaf (SKBC1), Strawberry (TT431)
- Branch 15: Owens Camp (OWNC1), Kirkwood (TT436)
- Branch 20: Leek Peak (TT017), Eldorado Portable NE DP14(TS445)
- Branch 30: Barney Ridge (TT022), So So Road (PG415)



FIRE BEHAVIOR FORECAST

FORECAST NUMBER: 9	TYPE OF FIRE: WILDFIRE
FIRE NAME: CALDOR CAENF-024030	OPERATIONAL PERIOD: 8/27-8/28/21 0700-0700
DATE ISSUED: 8/26/2021	TIME ISSUED: 1900
UNIT: ELDORADO NATIONAL FOREST	SIGNED:  Typed/printed: Stephen Volmer FBAN

INPUTS

WEATHER SUMMARY:

Temperatures will vary across the incident due to elevations. Humidity remains dry 9-14% Winds will remain consistent across the fire area. Morning winds will be down-canyon, shifting to up-canyon by 9am 5-9mph with gusts to 15mph. Gusts along Hwy 50 could reach 20 mph. Ridgetop winds will from the west 4-7mph. Nighttime temperature will be 52-73 with humidity 20-25% in open areas, and 40-45% in areas under the inversion. Nighttime ridgetop winds will be east southeast 7-12mph. Down-canyon winds will slow overnight returning to the up-canyon flow 6-10mph in the early morning with gusts to 16mph with low humidity levels.

****Review the weather forecast for more details and QR for RAWs unit information****

OUTPUTS

FIRE BEHAVIOR

FUEL MODEL	RATE OF SPREAD FT/MIN	FLAME LENGTH FT	SPOTTING DISTANCE	PROBABILITY OF IGNITION
TIMBER	10	7	.5 miles	90%
UNDERSTORY	18	10	.5 miles	90%
BRUSH	50	9	.4 miles	90%

GENERAL:

*****Group tree torching is expected with rates of spread up to 30 ft/min*****

Single and group tree torching will continue to occur due to the abundant low ladder fuels and tight canopies. Short active and passive crown fire runs will be possible in areas where the drainages are in alignment with the wind patterns. Expect increased amounts of spotting at the top-ends of those areas. Fuels in the area is extremely dry and receptive to ignition. Current ERC's and BI's are above the 90th percentile, 1000 hr fuels are below the 10th percentile. Local live fuel moistures are just above critical levels on the western sections, but still moderate in the upper elevations.

SPECIFIC:

- Erratic winds and fire behavior will be found in all the drainages, especially those along Hwy 50 and the Northeast section of the incident.
- Fire activity will moderate overnight allowing for good windows of opportunity to conduct firing operations and direct line control tactics.
- Ember cast from torching trees and rollout can remain hidden for extended periods of time before creating a new ignition within the dense heavy dead/down material.

AIR OPERATIONS:

Smoke slowly clearing in the early morning, with increased visibility and increased fire activity by 11:00. Transport winds out of the southwest 5mph with a mixing height of 6,500' AGL. Expect erratic winds across the ridgetops. Air resources may be limited or ineffective due to reduced visibility, have a back-up plan.

Sunset 19:39 Sunrise 06:29

SAFETY:

- Extremely hot deep ash pits will be found in all areas. Watch where you are walking and working.
- Be alert for the increased fire activity and wind flows once the inversion breaks.
- Spot fires can block your escape routes, always have an alternate plan.

Fuels and Fire Behavior Advisory

Northern California

August 17, 2021 to August 31, 2021



Subject: Potential for extreme fire behavior due to critically low live and dead fuel moistures, very dry conditions resulting from persistent drought, minimal snowpack and spring precipitation, and elevated fire danger rating values across much of northern California.

Discussion: Fires burning in northern California are exhibiting extreme fire growth based on critical fuel conditions. Fire spread is fuel driven and does not depend on wind to spread. Surface fuels are very receptive to embers. Long range spotting, area ignition, and group torching is occurring on large fires frequently.

Difference from normal conditions: Northern California is in a drought; currently with 90% at Extreme to Exceptional levels. The drought is expected to persist or intensify thorough out the fire season. Deficient rainfall and snowpack with early melt off has resulted in fuels that are below average in dryness, with record setting conditions for most areas.

Concerns to Firefighters and the Public:

- Energy Release Component (ERC) at numerous weather stations set record maximums already this year and are running at or above the 97th percentile in most cases. Expect increased fire intensity and spread rates in these areas. Early season extreme fire behavior has been observed in both light and heavy fuels. **Anticipate increased spread rates, spotting, and active nighttime burning.**
- The combination of persistent drought and record-low rainfall and snowpack amounts has led to very low live and dead fuel moistures. Low 1000-hour fuel moistures have been evidenced by complete consumption of dead fuels on recent fires. Live fuel moistures in grasses, shrubs and trees, have already reached critical levels in many areas of Northern California due to limited green-up this spring. **Expect fires to ignite easier and spread faster. Do not expect fires to exhibit reduced fire behavior when entering areas of live fuels; anticipate increased spread rates and spotting.**
- Direct attack is often not feasible under regular diurnal wind conditions with ground resources. And aviation utilization is often insufficient in moderating rate of spread without immediate heavy ground resource response. **Anticipate higher resistance to control in all fuel types.**
- Already this year, Northern California has experienced large fire activity and multiple team deployments. California will likely experience an extended fire season. It is important to be mindful of and manage fatigue for all resources. **Everyone, every day, returns home safely.**

Mitigation Measures:

- Local and inbound fire personnel need to be aware that fire behavior across the state is exceeding normal expectations for this time of the year. **Local briefings need to be thorough and highlight specific fire environment conditions. These include but are not limited to local weather forecasts, Pocket Cards, ERC's, live and dead fuel moistures.**
- Suppression actions need to be based on good anchor points, escape routes, and safety zones. **Remember LCES. Experienced lookouts are essential under these conditions.**
- Base all actions on current and expected behavior of the fire. **Augment initial attack resources as incident activity dictates.**

Area of Concern: Northern California except for the following Predictive Service Areas: North Coast and Bay Marine, west of Highway 101 in Mid-Coast to Mendocino and Diablo-Santa Cruz, and the north eastern portion of Far Eastside.



SAFETY MESSAGE CALDOR INCIDENT



1. Incident Name: CALDOR INCIDENT	2. Operational Period: Date From: 08/27/21 Time From: 07:00	Date To: 08/28/21 Time To: 07:00
-----------------------------------	--	-------------------------------------

**REST when opportunity provides itself.
Time to Think – Time to Drink! Stay Hydrated.**

FIRE BEHAVIOR: Maintain Situational Awareness & Predict.

ALWAYS wear proper PPE for the potential fire behavior.
Drought & Fire Weakened trees all have accident potential; especially with wind.
Fuels: RECEPTIVE - Rates of Spread: Spotting – Watch for alignment!

WINDS ADD DANGER IN ALL OPERATIONS.

Anticipate Winds changing and increasing; monitor weather conditions/take weather.
No frontal assaults when combating wind-driven fire conditions.
Watch alignment and rates of spread.

HEALTH & WELLNESS: Take Care of Ourselves & Others.

Be cognizant of COVID-19 Best Practices – Wipe Surfaces & Door Handles.
MONITOR yourself and your assigned personnel for FATIGUE and DEHYDRATION.
Avoid Complacency; Maintain Good Work Rest Cycles.

DEFENSIVE DRIVING REQUIREMENTS: Be the PROFESSIONAL.


Caution with smoke or blind corners; watch for civilian traffic.
EVALUATE your driving routes; monitor speed, gear selection, & brakes.
TURN ON headlights; prepare for the unexpected.
UTILIZE chocks, backers and spotters; when in doubt scout it out!

Terrain & Drainages:


Steep, Footing Issues, Access Issues – Creates alignment and Safety Issues.
WATCH OUT for fires establishing in River Bottoms; have look outs & Escape Routes.

Primary, Alternate, Contingency, Emergency Planning on all new assignments;
Calculate Risk and Take Appropriate Actions based on predicted extreme fire behavior and available resources; have them in-place prior to executing any plan.

4. Site Safety Plan Required? Yes No

5. Prepared by: Name: J.Buchmeier SOF1 / J.Novak SOF1

 ICS 208 | Date/Time: 8/26/21 0700

CALDOR FIRE
RISK ANALYSIS (ICS 215-A)

DIV	HAZARDOUS ACTIONS/CONDITIONS	MITIGATIONS / WARNINGS / REMEDIES	
ALL	EXTREME FIRE BEHAVIOR & NEW START(S)	Know your LCES and maintain Situational Awareness. Use experienced Look Outs. Follow downhill line construction guidelines. Monitor weather for changes in the wind, temp, and RH during the shift. Have a contingency plan with established decision points and safety zones.	
ALL	COVID 19, ILLNESS, & HYGIENE	Adhere to local, state, federal and CDC health guidelines. Maintain social distancing when applicable. Wear a mask if unvaccinated. Report any illness symptoms immediately to a supervisor. Hygiene, hand washing, and disinfecting of surfaces & handles often.	
ALL	FATIGUE, HEAT, & DEHYDRATION	Don't underestimate the task at hand. Adhere to work/rest cycle for all task(s). Drink water before, during and after shifts, up to 1.5 gal. per shift. Review Heat Related Emergencies (IRPG Pg. 109). Seek shade when you can. Watch for stack-effect of fatigue and exhaustion; REST & Plan operations.	
ALL	COMPLACENCY	Be alert for signs of fatigue and distractions; remain engaged. Know your LCES and maintain situational awareness. Have the right radio clone. Know your adjoining forces and FREQUENCIES . Primary, Alternate, Contingency, Emergency on all assignments.	
ALL	REPTILES, BEE'S & ANIMALS	Watch Out for RATTLESNAKES! Be aware of possible bee or wasp hives. Be cautious to other natural animals and hazards associated with each.	
ALL	STEEP TERRAIN / ROLLING DEBRIS	Watch your footing while hiking in steep terrain. Be careful of loose rolling debris. Maintain Situational Awareness . Know Tree Hazards in the work area. Dangerous Mountain Roads – SLOW Defensive Driving.	
ALL	FALLING MODULES & HAZARD TREES.	The ones that haven't fallen yet; look up, look around – identify hazard trees. Identify and isolate the area to provide for the safety of others. Drought-Stressed Trees are weakened; Flag and make proper notifications. Do not fall trees out of your certification level. Evaluate wind and lean prior to making cuts.	
ALL	DRIVING HAZARDS	SLOW DOWN! Do 360's before moving vehicles. Utilize Chocks. Drive with headlights & seatbelts on; drive defensively on steep winding roads. Watch Speed through communities; public perception and safety are key. Utilize spotters and backers; when in doubt, scout it out. Assess Road Conditions; Flag hazard if you cannot mitigate, report.	
ALL	MINE SHAFTS	Caution to mine shafts that may be in the fire area. Do not enter or seek shade in shafts; stay clear and identify.	
ALL	AIRCRAFT OPERATIONS	Monitor air-to-ground frequencies; they are your eyes in the sky. Use air-to-ground frequency to communicate with aircraft. Use clear, concise statements when directing aircraft; CLEAR THE LINE! Only utilize aircraft to insert personnel on the line when necessary.	
Incident Name: CALDOR FIRE ICS 215a		Prepared by: Jason Novak SOF1 	OPERATIONAL PERIOD 8/27/21-8/28/21 0700-0700



SAFETY COMMUNICATION HAZARD TREE / TREE MORTALITY AWARENESS



Standing dead trees (snags) and green trees remain a constant threat to responder safety. Due to extended drought conditions, there are millions of dead and dying trees in California, and many more that are stressed due to unhealthy forests or fire damage. The combination of epidemic levels of bark beetle infestations and years of drought conditions has created an extreme hazard throughout California. Conifer and Oak trees that have recently died are identified as “Red Trees”. Once the needles or leaves have fallen, the dead tree enters the “Gray Phase” where continued decay and decomposition may be occurring internally with few visual indicators of its extent.

Aside from over 9 million acres of standing dead trees that pose an extreme life safety hazard for firefighters and civilians, the hazard trees are everywhere we operate carrying out our mission. Educating and training our personnel on “Hazard Tree” awareness as well as the appropriate actions for identification and mitigation of safety concerns while working, training, and responding to **ALL AREAS IS CRITICAL**. Operating in a known tree mortality area brings awareness to responders, we need to ensure we are taking precautions in ALL areas.

- Personnel should identify the “Hazard Tree” or “Tree Mortality” locations in their local response areas, fire line assignments and the locations of active fuel reduction projects that they could possibly encounter.
- Recognize when responding to identified “Tree Mortality” areas and provide safety briefings to all responding resources.
- Incidents should be focused on responder safety and hazard tree considerations.
- Be prepared for extreme fire behavior and dangerous rates of spread:
 - Delay or withdraw until the fire can be engaged.
 - Provide appropriate clearance for staged or parked vehicles.
- **Recognize the potential for:**
 - Green trees falling without warning.
 - Ground fire rapidly reaching the crowns of large dead stands of trees
 - Trees and limbs falling during air operations or windy conditions
 - With advancing decay of trees watch for bark slide, falling limbs or multiple trees falling together if they are in contact with each other
- Personnel performing work on fuel reduction projects in **ALL** areas, need to **ensure applicable IIPP documents reflect the work being performed** and are updated throughout the project’s life span.



Lookout – When working around fire weakened, stressed or decaying trees

Communicate – Brief personnel when working near fire weakened or hazard tree areas

Escape Routes – May be compromised by falling trees

Safety Zones – Are identified and large enough for a “Hazard Tree” or “Tree Mortality” area

For Tree Mortality Area Responder Briefing Packets, [click here](#)



Employee Response Action Plan

COVID-19 Positive Test or COVID-19 Positive Clinical Symptoms Presentation

- COVID 19 Symptoms: Cough, SOB, Fever or afebrile, Chills, Muscle Pain, Sore throat, Loss of taste/smell
- Employee informs Company Officer and Strike Team Leader of presumed/confirmed COVID-19 symptoms.
- Employee advised to seek evaluation by Medical Unit and CAL MAT or base camp medical unit.
- Crew initiates cleaning measures. Mask, safety glasses, gloves worn. (If needed, LOGS will assist)
- Medical Unit to notified IC, Liaison, Safety and Logistics ASAP. Medical Unit will notify COVID-19 Public Health Officer and determine need for testing and locations.

Incident Action Plan

- Company Officer / Strike Team Leader notified of personnel with COVID-19 positive test or symptom.
- Medical Unit evaluates individual(s) and need for care and evaluation.
- IC, Liaison, Safety and Logistics notification made to determine course of incident evaluation and response.
- Line Chief, Agency Administrator, and Region Office updated upon notification

Facilities Response

- Medical and Safety notified
- Incident Notification
- Disinfection plan initiated.
- Resource Status Evaluated

Medical Evaluation & Contact Tracing

- Personnel interviewed by Medical Unit . List of Positive contacts made in the last 5 days acquired. All Exposed are required to wear surgical mask, self monitor for Fever/Resp symptoms for up to 14 days (exposed personnel are subject to COVID-19 testing)
- Home Unit / Department utilized and retrospective tracking of Positive COVID-19 personnel inter-actions are identified within the last 5 days.
- Home Unit / Department updated by Company Officer / Strike Team Leader.
- Public Health Department is contacted and updated by IC or Designated Representative.
- Positive COVID-19 Employees w/symptoms will need to be evaluated by Health Department conducting testing, prior to returning to assignment.
- Positive COVID-19 Employees w/o symptoms may be required to be evaluated and resource status will be reviewed prior to returning to assignment.

ASSIGNMENT LIST (ICS 204 WF)

CONTROLLED UNCLASSIFIED
INFORMATION//BASIC

1. Incident Name: Caldor Incident	2. Operational Period: Date From: 08/27/21 Date To: 08/28/21 Time From: 0700 Time To: 0700	3. Branch Division I A Page 1 of 1 Alpha
--	---	--

4. Operations Personnel:	
Operations Section Chief: E. Schwab / B. Monday	Night Ops: T. Ernst
Branch Director: D. Esades	Branch Safety: J. Foy / P. Ryan (12)
Division/Group Supervisor: P. Byde	Air Attack: A. Sanchez

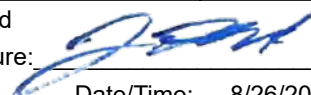
5. Resources Assigned:		** Resources Below in Bold are 12 Hour **					
Resource Identifier	ALS	LWD	Leader	Personnel	Request #	Hours	Reporting Location
STA OES 1840A			V. Marin	21	E-20546	0700-0700	DP 3
STA XLG 1362A			K. Millikan	20	E-20343	0700-0700	DP 3
STC MVU 9332C			K. Thompson	16	E-20085	0700-0700	DP 3
T/F XBO 6211 (3,6,6,W/T,W/T)			D. Wooters	0	E-20310	0700-0700	DP 3
T/F CALDOR 1 (3,3,3,3,3)			P. Moffett	18	E-9002	0700-0700	DP 3
T/F Pioneer			K. Earl			0700-1900	DP 3
ENG TXS 6160			J. Hawkins	3	E-324	0700-1900	DP 3
ENG PVT E-328			M. Finn	3	E-328	0700-1900	DP 3
CRW PVT C-30		9/7	C. Valentine	20	C-30	0700-1900	DP 3
CRW PVT C-31		9/6	Z. Curtis	20	C-31	0700-1900	DP 3
CRW PVT C-42			J. Miracle	20	C-42	0700-1900	DP 3
DOZ PVT E-20261			M. Dusi	2	E-20261	0700-0700	DP 3
W/T PVT E-20007			R. Carvalho	1	E-20007	0700-1900	DP 3
W/T PVT E-20012			R. Alvarez	1	E-20012	0700-1900	DP 3
W/T PVT E-20152			K. Lawless	1	E-20152	0700-1900	DP 3
W/T PVT E-20176			R. Hurl	2	E-20176	0700-0700	DP 3
FALM PVT O-20026				2	O-20026	0700-1900	DP 3
TFLD CROWL			C. Crowl	1	O-22	0700-1900	DP 3

6. Work Assignments:
 Prepare for firing operations and implement burn plan.
 Construct control lines as direct as possible.
 Insert progressive hose lays.
 Improve and hold established control lines.

7. Special Instructions:
 Buckbar Rd. off limits to Water Tenders, alternate route use Pleasant Valley Rd.

AMB ALS 2, REMS 18 (12 day), AMB BLS 527 (12 day)

8. Communications							
Name	Ch	Function	Rx Freq	Rx Tone	Tx Freq	Tx Tone	Notes
COMMAND: Please refer to Communications Plan							
CDF T26	12	TACTICAL	159.2925N	192.8	159.2925N	192.8	
A/G TAC	14	AIR TO GROUND	164.1375N		164.1375N		
CALCORD	15	MEDICAL	156.0750N	156.7	156.0750N	156.7	MEDICAL COORDINATION
GUARD 27	16	EMERGENCY	168.6250N		168.6250N	110.9	EMERGENCY USE ONLY

9. Prepared by: Name: J. Heald RESL 24 Hr Shift: 59
 Signature:  12 Hr Shift: 71
ICS 204 Date/Time: 8/26/2021 2200 Total: 151

ASSIGNMENT LIST (ICS 204 WF)

CONTROLLED UNCLASSIFIED
INFORMATION//BASIC

1. Incident Name: Caldor Incident	2. Operational Period: Date From: 08/27/21 Date To: 08/28/21 Time From: 0700 Time To: 0700	3. Branch Division I D Page 1 of 3 Delta
--	---	--

4. Operations Personnel:	
Operations Section Chief: E. Schwab / B. Monday	Night Ops: T. Ernst
Branch Director: D. Esades	Branch Safety: J. Foy / P. Ryan (12)
Division/Group Supervisor: B. Egan / S. Forman (T)	Air Attack: A. Sanchez

5. Resources Assigned:		** Resources Below in Bold are 12 Hour **					
Resource Identifier	ALS	LWD	Leader	Personnel	Request #	Hours	Reporting Location
STC BDU 9350C			B. Lanning	16	E-20207	0700-0700	DP 28
STC FKU 9430C			T. Bolyard	16	E-20209	0700-0700	DP 28
STC XSJ 4178C		9/6	S. Arganbright	19	E-20240	0700-0700	DP 28
T/F CALDOR 2 (3,3,3,3,3,3)		8/29	C. Crowl	24	E-9003	0700-1900	DP 28
T/F CALDOR 6 (3,3,6,6,6)			E. Jansen	20	E-9011	1900-0700	DP 28
ENG FWF 653		9/6	S. Strider	4	E-279	0700-1900	DP 28
ENG MDF 354			M. Polley	5	E-342	1900-0700	DP 28
ENG WWF 613			J. Duke	4	E-276	1900-0700	DP 28
ENG OCF 618			C. Mathis	6	E-335	1900-0700	DP 28
ENG PVT E-182		9/3	K. Looking	3	E-182	0700-1900	DP 28
ENG PVT E-272		9/6	C. Bates	3	E-272	0700-1900	DP 28
STG LNU 9140G (CDCR)			M. Orgensen	30	C-20030	0700-0700	DP 28
STG TUU 9413G (CDCR)			R. High	29	C-20008	0700-0700	DP 28
CRW TNF TAHOE IHC		9/6	D. Jurrero	21	C-47	1900-0700	DP 28
CRW LAGUNA IHC		8/29	T. Kraling	15	C-1	0700-1900	DP 28
CRW MNF SAIPAN 36		9/7	B. Boatman	21	C-45	0700-1900	DP 28
CRW JDU NORTH PACIFIC		9/6	R. Gonzalez	20	C-60	1900-0700	DP 28
CRW NNS WELLS 1			H. Matoud	24	C-20038	0700-0700	DP 28
CRW NNS PIOCHE 1			N. Shumway	26	C-20039	0700-0700	DP 28

Prepare for firing operations and implement burn plan.
Construct control lines as direct as possible.
Insert progressive hose lays.
Improve and hold established control lines.

7. Special Instructions: Buckbar Rd. off limits to Water Tenders, alternate route use Pleasant Valley Rd.
AMB ALS 2, REMS 18 (12 day), AMB BLS 527 (12 day)

8. Communications							
Name	Ch	Function	Rx Freq	Rx Tone	Tx Freq	Tx Tone	Notes
COMMAND: Please refer to Communications Plan							
NIFC T6	9	TACTICAL	166.7750N		166.7750N		
A/G TAC	14	AIR TO GROUND	164.1375N		164.1375N		
CALCORD	15	MEDICAL	156.0750N	156.7	156.0750N	156.7	MEDICAL COORDINATION
GUARD 27	16	EMERGENCY	168.6250N		168.6250N	110.9	EMERGENCY USE ONLY

9. Prepared by: Name:	J. Heald	RESL	24 Hr Shift: 160
	Signature:		12 Hr Shift: 31
ICS 204	Date/Time: 8/26/2021 2200		Total: 306

ASSIGNMENT LIST (ICS 204 WF)

CONTROLLED UNCLASSIFIED
INFORMATION//BASIC

1. Incident Name: Caldor Incident	2. Operational Period: Date From: 08/27/21 Date To: 08/28/21 Time From: 0700 Time To: 0700	3. Branch Division I D Page 2 of 3 Delta
--	---	---

4. Operations Personnel:	
Operations Section Chief: E. Schwab / B. Monday	Night Ops: T. Ernst
Branch Director: D. Esades	Branch Safety: J. Foy / P. Ryan (12)
Division/Group Supervisor: B. Egan / S. Forman (T)	Air Attack: A. Sanchez

5. Resources Assigned:		** Resources Below in Bold are 12 Hour **					
Resource Identifier	ALS	LWD	Leader	Personnel	Request #	Hours	Reporting Location
CRW PVT C-41			J. Szabo	20	C-41	0700-1900	DP 28
DOZ LNU 1449			K. Mittlestod	1	E-50	0700-0700	DP 28
DOZ ANF 10		8/29	A. Nava	2	E-34	0700-1900	DP 28
DOZ PVT E-30		8/30	T. Huckaby	2	E-30	0700-1900	DP 28
DOZ PVT E-33		8/28	B. Caruthers	2	E-33	0700-1900	DP 28
DOZ PVT E-20181			R. Dominikus	1	E-20181	0700-1900	DP 28
DOZ PVT E-20184			J. Palmer	2	E-20184	0700-1900	DP 28
DOZ PVT E-20185			K. Pearnish	2	E-20185	0700-0700	DP 28
DOZ PVT E-20257			B. Hendrix	3	E-20257	0700-0700	DP 28
DOZ PVT E-20260			E. Herl	2	E-20260	0700-0700	DP 28
W/T PVT E-20003			B. Bedell	2	E-20003	0700-0700	DP 28
W/T PVT E-20010			D. Gray	1	E-20010	0700-1900	DP 28
W/T PVT E-20011			D. Sasser	1	E-20011	0700-1900	DP 28
W/T PVT E-20013			E. Molina	2	E-20013	0700-0700	DP 28
W/T PVT E-20169			R. Zeb	2	E-20169	0700-0700	DP 28
W/T PVT E-20172			M. Kempf	2	E-20172	0700-0700	DP 28
W/T PVT E-20174			J. Buchanan	2	E-20174	0700-0700	DP 28
W/T PVT E-20282			M. Wood	2	E-20282	0700-0700	DP 28

6. Work Assignments:
 Prepare for firing operations and implement burn plan.
 Construct control lines as direct as possible.
 Insert progressive hose lays.
 Improve and hold established control lines.

7. Special Instructions:
 Buckbar Rd. off limits to Water Tenders, alternate route use Pleasant Valley Rd.

AMB ALS 2, REMS 18 (12 day), AMB BLS 527 (12 day)

8. Communications							
Name	Ch	Function	Rx Freq	Rx Tone	Tx Freq	Tx Tone	Notes
COMMAND: Please refer to Communications Plan							
NIFC T6	9	TACTICAL	166.7750N		166.7750N		
A/G TAC	14	AIR TO GROUND	164.1375N		164.1375N		
CALCORD	15	MEDICAL	156.0750N	156.7	156.0750N	156.7	MEDICAL COORDINATION
GUARD 27	16	EMERGENCY	168.6250N		168.6250N	110.9	EMERGENCY USE ONLY

9. Prepared by: Name:	J. Heald	RESL	24 Hr Shift: 13
	Signature:		12 Hr Shift: 24
ICS 204	Date/Time: 8/26/2021 2200		Total: 51

ASSIGNMENT LIST (ICS 204 WF)

CONTROLLED UNCLASSIFIED
INFORMATION//BASIC

1. Incident Name: Caldor Incident	2. Operational Period: Date From: 08/27/21 Date To: 08/28/21 Time From: 0700 Time To: 0700	3. Branch Division I D Page 3 of 3 Delta
--	---	---

4. Operations Personnel:	
Operations Section Chief: E. Schwab / B. Monday	Night Ops: T. Ernst
Branch Director: D. Esades	Branch Safety: J. Foy / P. Ryan (12)
Division/Group Supervisor: B. Egan / S. Forman (T)	Air Attack: A. Sanchez

5. Resources Assigned:		** Resources Below in Bold are 12 Hour **					
Resource Identifier	ALS	LWD	Leader	Personnel	Request #	Hours	Reporting Location
W/T PVT E-20302			R. Leaverton	2	E-20302	0700-0700	DP 28
W/T PVT E-20567		9/6	S. Fourbay	2	E-20567	0700-0700	DP 28
W/T PVT E-20679			T. Kelly	2	E-20679	0700-0700	DP 28
MAST PVT E-20029			M. Collins	2	E-20029	0700-1900	DP 28
FELB PVT E-20037			S. Farkas	1	E-20037	0700-1900	DP 28
FALM PVT O-20025				2	O-20025	0700-1900	DP 28

6. Work Assignments:
 Prepare for firing operations and implement burn plan.
 Construct control lines as direct as possible.
 Insert progressive hose lays.
 Improve and hold established control lines.

7. Special Instructions:
 Buckbar Rd. off limits to Water Tenders, alternate route use Pleasant Valley Rd.

AMB ALS 2, REMS 18 (12 day), AMB BLS 527 (12 day)

8. Communications							
Name	Ch	Function	Rx Freq	Rx Tone	Tx Freq	Tx Tone	Notes
COMMAND: Please refer to Communications Plan							
NIFC T6	9	TACTICAL	166.7750N		166.7750N		
A/G TAC	14	AIR TO GROUND	164.1375N		164.1375N		
CALCORD	15	MEDICAL	156.0750N	156.7	156.0750N	156.7	MEDICAL COORDINATION
GUARD 27	16	EMERGENCY	168.6250N		168.6250N	110.9	EMERGENCY USE ONLY

9. Prepared by: Name:	J. Heald Signature:	RESL	24 Hr Shift: 6 12 Hr Shift: 3 Total: 11
------------------------------	------------------------	------	---

ICS 204 Date/Time: 8/26/2021 2200

ASSIGNMENT LIST (ICS 204 WF)

CONTROLLED UNCLASSIFIED
INFORMATION//BASIC

1. Incident Name: Caldor Incident	2. Operational Period: Date From: 08/27/21 Date To: 08/28/21 Time From: 0700 Time To: 0700	3. Branch Division I F
4. Operations Personnel:		Page 1 of 2 Foxtrot

Operations Section Chief: E. Schwab / B. Monday	Night Ops: T. Ernst
Branch Director: D. Esades	Branch Safety: J. Foy / P. Ryan (12)
Division/Group Supervisor: P. Lohan	Air Attack: A. Sanchez

5. Resources Assigned:		** Resources Below in Bold are 12 Hour **					
Resource Identifier	ALS	LWD	Leader	Personnel	Request #	Hours	Reporting Location
STC OES 4800C	X		M. Piacentini	22	E-20341	0700-0700	DP 22
STC NEU 9231C			D. Nelson	18	E-20211	0700-0700	DP 22
ENG MDF 64			J. Keoni	5	E-316	0700-1900	DP 22
ENG BNP 74			W. Breakfield	5	E-372	0700-1900	DP 22
ENG ASF 372			R. Greasewood	6	E-339	0700-1900	DP 22
STG AEU 9275G (CDCR)			D. Grandbois	33	C-20015	0700-0700	DP 22
CRW SCU PECH 2			G. Pullen	15	C-17	0700-1900	DP 22
CRW CNA 16A			M. Gliatto	18	C-16	0700-1900	DP 22
DOZ ENF 3			D. Angenderfer	4	E-200	0700-0700	DP 22
DOZ PVT E-20258			T. Wanzer	2	E-20258	0700-0700	DP 22
DOZ PVT E-20262			A. Francis	2	E-20262	0700-0700	DP 22
W/T XAM 6540			E. Moore	2	E-14	0700-0700	DP 22
W/T PVT E-20001			A. Chidley	2	E-20001	0700-0700	DP 22
W/T PVT E-20002			S. Zay	2	E-20002	0700-0700	DP 22
W/T PVT E-20019			M. Dahl	1	E-20019	0700-1900	DP 22
W/T PVT E-20153			M. Greer	1	E-20153	0700-1900	DP 22
W/T PVT E-20277			D. Castle	1	E-20277	0700-1900	DP 22
W/T PVT E-20178			K. Gray	2	E-20178	0700-0700	DP 22
W/T PVT E-20281			J. Salazar	1	E-20281	0700-1900	DP 22

6. Work Assignments:
 Construct control lines as direct as possible.
 Improve and hold established control lines.
 Insert progressive hose lays.

7. Special Instructions:
 Buckbar Rd. off limits to Water Tenders, alternate route use Pleasant Valley Rd.

AMB ALS 2, REMS 18 (12 day), AMB BLS 527 (12 day)
REAF A. Brown, M. Santora

8. Communications							
Name	Ch	Function	Rx Freq	Rx Tone	Tx Freq	Tx Tone	Notes
COMMAND: Please refer to Communications Plan							
NIFC T3	10	TACTICAL	168.6000N		168.6000N		
A/G TAC	14	AIR TO GROUND	164.1375N		164.1375N		
CALCORD	15	MEDICAL	156.0750N	156.7	156.0750N	156.7	MEDICAL COORDINATION
GUARD 27	16	EMERGENCY	168.6250N		168.6250N	110.9	EMERGENCY USE ONLY

9. Prepared by: Name:	J. Heald	RESL	24 Hr Shift: 83
	Signature:		12 Hr Shift: 53
ICS 204	Date/Time: 8/26/2021 2200		Total: 142

ASSIGNMENT LIST (ICS 204 WF)

CONTROLLED UNCLASSIFIED
INFORMATION//BASIC

1. Incident Name:	2. Operational Period:	3. Branch	Division
Caldor Incident	Date From: 08/27/21 Date To: 08/28/21 Time From: 0700 Time To: 0700	I	F
4. Operations Personnel:		Page 2 of 2	Foxtrot

Operations Section Chief: E. Schwab / B. Monday	Night Ops: T. Ernst
Branch Director: D. Esades	Branch Safety: J. Foy / P. Ryan (12)
Division/Group Supervisor: P. Lohan	Air Attack: A. Sanchez

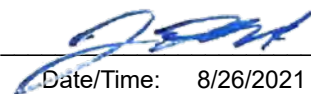
5. Resources Assigned:		** Resources Below in Bold are 12 Hour **					
Resource Identifier	ALS	LWD	Leader	Personnel	Request #	Hours	Reporting Location
W/T PVT E-20565			R. Box	1	E-20565	0700-1900	DP 22
W/T PVT E-20566			R. Ertl	1	E-20566	0700-1900	DP 22
SKDGN PVT E-64		9/1	T. Eggar	2	E-64	0700-1900	DP 22
SKDGN PVT E-65		9/2	C. Gehrke	2	E-65	0700-1900	DP 22
MAST PVT E-20038			R. Meza	1	E-20038	0700-1900	DP 22
GRD PVT E-20045			L. Drew	1	E-20045	0700-1900	DP 22
GRD PVT E-20046			S. Turner	2	E-20046	0700-1900	DP 22
FALM PVT O-20140		9/4		2	O-20140	0700-1900	DP 22

6. Work Assignments:
Construct control lines as direct as possible.
Improve and hold established control lines.
Insert progressive hose lays.

7. Special Instructions:
Buckbar Rd. off limits to Water Tenders, alternate route use Pleasant Valley Rd.

AMB ALS 2, REMS 18 (12 day), AMB BLS 527 (12 day)
REAF A. Brown, M. Santora

8. Communications							
Name	Ch	Function	Rx Freq	Rx Tone	Tx Freq	Tx Tone	Notes
COMMAND: Please refer to Communications Plan							
NIFC T3	10	TACTICAL	168.6000N		168.6000N		
A/G TAC	14	AIR TO GROUND	164.1375N		164.1375N		
CALCORD	15	MEDICAL	156.0750N	156.7	156.0750N	156.7	MEDICAL COORDINATION
GUARD 27	16	EMERGENCY	168.6250N		168.6250N	110.9	EMERGENCY USE ONLY

9. Prepared by: Name: J. Heald RESL 24 Hr Shift: 0
Signature:  12 Hr Shift: 10
ICS 204 Date/Time: 8/26/2021 2200 Total: 12

ASSIGNMENT LIST (ICS 204 WF)

CONTROLLED UNCLASSIFIED
INFORMATION//BASIC

1. Incident Name: Caldor Incident	2. Operational Period: Date From: 08/27/21 Date To: 08/28/21 Time From: 0700 Time To: 0700	3. Branch Division X G Page 1 of 1 Golf
--	---	--

4. Operations Personnel:	
Operations Section Chief: E. Schwab / B. Monday	Night Ops: T. Ernst
Branch Director: M. Wallen / S. Long (T)	Branch Safety: D. White / R. Menise
Division/Group Supervisor: I. Stevens / S. Watkins (T)	Air Attack: A. Sanchez

5. Resources Assigned:		** Resources Below in Bold are 12 Hour **					
Resource Identifier	ALS	LWD	Leader	Personnel	Request #	Hours	Reporting Location
ENG CNF 322		8/28	C. Hamilton	5	E-27	0700-1900	DP 7
ENG PVT E-273			J. Scaroni	3	E-273	0700-1900	DP 7
ENG PVT E-284			J. Wayne	3	E-284	0700-1900	DP 7
CRW PVT C-22			E. Moreno	20	C-22	0700-1900	DP 7
CRW PVT C-27			R. Ibarra	20	C-27	0700-1900	DP 7
DOZ PVT E-260			M. Davis	2	E-260	0700-0700	DP 7
DOZ PVT E-20533			S. Hill	2	E-20533	0700-0700	DP 7
DOZ PVT E-20537			M. Smith	2	E-20537	0700-0700	DP 7
W/T PVT E-20324			R. Gold	2	E-20324	0700-1900	DP 7
W/T PVT E-20015			D. Dixon	1	E-20015	0700-1900	DP 7
W/T PVT E-20681			C. Morris	1	E-20681	0700-1900	DP 7

6. Work Assignments:
 Construct control lines as direct as possible.
 Insert progressive hose lays.
 Improve and hold established control lines.

7. Special Instructions:
 Buckbar Rd. off limits to Water Tenders, alternate route use Pleasant Valley Rd.
 T/F Caldor Leader will be DIV "G"
AMB ALS 801
REAF A. Brown, M. Santora, P. Foulk

8. Communications							
Name	Ch	Function	Rx Freq	Rx Tone	Tx Freq	Tx Tone	Notes
COMMAND: Please refer to Communications Plan							
CDF T27	8	TACTICAL	159.3075N	192.8	159.3075N	192.8	
A/G TAC	14	AIR TO GROUND	164.1375N		164.1375N		
CALCORD	15	MEDICAL	156.0750N	156.7	156.0750N	156.7	MEDICAL COORDINATION
GUARD 27	16	EMERGENCY	168.6250N		168.6250N	110.9	EMERGENCY USE ONLY

9. Prepared by: Name:	J. Heald	RESL	24 Hr Shift: 6
	Signature:		12 Hr Shift: 55
ICS 204	Date/Time: 8/26/2021 2200		Total: 61

ASSIGNMENT LIST (ICS 204 WF)

CONTROLLED UNCLASSIFIED
INFORMATION//BASIC

1. Incident Name:	2. Operational Period:	3. Branch	Division
Caldor Incident	Date From: 08/27/21 Date To: 08/28/21 Time From: 0700 Time To: 0700	X	H
4. Operations Personnel:		Page 1 of 2	Hotel

Operations Section Chief: E. Schwab / B. Monday	Night Ops: T. Ernst
Branch Director: M. Wallen / S. Long (T)	Branch Safety: D. White / R. Menise
Division/Group Supervisor: A. Estabrook	Air Attack: A. Sanchez

5. Resources Assigned:		** Resources Below in Bold are 12 Hour **					
Resource Identifier	ALS	LWD	Leader	Personnel	Request #	Hours	Reporting Location
T/F XCA 4054 (3,6,6,6,W/T)			S. Kovacs	16	E-92	0700-0700	DP 21
T/F XTO 4250 (3,3,3,3,W/T)			G. Miller	17	E-20221	0700-0700	DP 21
T/F XSD 6411 (1,1,3,6,6)			<i>M. Spaulding</i>	20	E-20239	0700-0700	DP 21
T/F XMR 2140 (1,3,3,3,W/T)			<i>K. Hamilton</i>	20	E-20340	0700-0700	DP 21
T/F OES 4803 (3,3,3,6)			<i>R. Bundy</i>	15	E-20544	0700-0700	DP 21
T/F CALDOR 9 (3,4,4,6,6)			P. Sten Cada	16	E-9244	0700-1900	DP 21
ENG FIF 642			D. Probert	4	E-313	1900-0700	DP 21
ENG NMBTR 2062			P. Hensel	3	E-322	1900-0700	DP 21
ENG UAF 302			W. Deleo	6	E-315	0700-1900	DP 21
ENG HOA 6562			F. Kykotsmovi	3	E-341	0700-1900	DP 21
ENG PVT E-311			C. McConnel	3	E-311	1900-0700	DP 21
ENG PVT E-325			R. Rydberg	3	E-325	1900-0700	DP 21
ENG PVT E-20473			J. Winfree	3	E-20473	0700-1900	DP 21
ENG PVT E-384			S. Walker	3	E-384	0700-1900	DP 21
ENG PVT E-385			J. Navarro	3	E-385	0700-1900	DP 21
ENG PVT E-334			R. Maharrey	3	E-334	0700-1900	DP 21
STG AEU 9279G (CCC)			D. Garnin	30	C-20009	0700-0700	DP 21
CRW MNF MENDOCINO IHC			E. Cecon	20	C-46	1900-0700	DP 21

6. Work Assignments:
 Construct control lines as direct as possible.
 Insert progressive hose lays.
 Improve and hold established control lines.
 Implement structure defense plan, with an emphasis on perimeter control.

7. Special Instructions:
 Buckbar Rd. off limits to Water Tenders, alternate route use Pleasant Valley Rd.

AMB ALS 801
REAF C. Engelhardt, J. Mabe, P. Foulk

8. Communications							
Name	Ch	Function	Rx Freq	Rx Tone	Tx Freq	Tx Tone	Notes
COMMAND: Please refer to Communications Plan							
CDF T28	9	TACTICAL	151.1825N	192.8	151.1825N	192.8	
A/G TAC	14	AIR TO GROUND	164.1375N		164.1375N		
CALCORD	15	MEDICAL	156.0750N	156.7	156.0750N	156.7	MEDICAL COORDINATION
GUARD 27	16	EMERGENCY	168.6250N		168.6250N	110.9	EMERGENCY USE ONLY

9. Prepared by: Name:	J. Heald	RESL	24 Hr Shift: 98
	Signature:		12 Hr Shift: 37
ICS 204	Date/Time: 8/26/2021 2200		Total: 188

ASSIGNMENT LIST (ICS 204 WF)

CONTROLLED UNCLASSIFIED
INFORMATION//BASIC

1. Incident Name:	2. Operational Period:	3. Branch	Division
Caldor Incident	Date From: 08/27/21 Date To: 08/28/21 Time From: 0700 Time To: 0700	X	H
4. Operations Personnel:		Page 2 of 2	Hotel

Operations Section Chief: E. Schwab / B. Monday	Night Ops: T. Ernst
Branch Director: M. Wallen / S. Long (T)	Branch Safety: D. White / R. Menise
Division/Group Supervisor: A. Estabrook	Air Attack: A. Sanchez

5. Resources Assigned:		** Resources Below in Bold are 12 Hour **					
Resource Identifier	ALS	LWD	Leader	Personnel	Request #	Hours	Reporting Location
CRW ENF CREW 23			B. Fletcher	10	O-164	0700-1900	DP-21
CRW ENF Crew 26			K. Breitwieser	10	O-4	0700-1900	DP-21
CRW PVT C-44			S. Lewis	20	C-44	0700-1900	DP-21
DOZ PVT E-20033			T. Vicini	2	E-20033	0700-0700	DP-21
DOZ PVT E-20183			M. Nottnagel	2	E-20183	0700-0700	DP-21
DOZ PVT E-20255			N. Morton	3	E-20255	0700-0700	DP-21
DOZ PVT E-20256			K. Dye	3	E-20256	0700-0700	DP-21
DOZ PVT E-20259			G. Bartglet	2	E-20259	0700-0700	DP-21
W/T PVT E-20020			T. Astasopoulos	1	E-20020	0700-1900	DP-21
W/T PVT E-20171			P. Mailloux	1	E-20171	0700-1900	DP-21
W/T PVT E-20273			J. Vaine	1	E-20273	0700-1900	DP-21
W/T PVT E-20175			G. Bartlett	2	E-20175	0700-0700	DP-21
W/T PVT E-20285			L. Jones	1	E-20285	0700-1900	DP-21
W/T PVT E-20347			B. Fetzer	1	E-20347	0700-1900	DP-21
W/T PVT E-20678			S. Dooling	2	E-20678	0700-0700	DP-21
FELB PVT E-56			D. Flanagan	2	E-56	0700-1900	DP-21
HEQB-T BROWN			C. Brown	1	O-20279	0700-0700	DP-21

6. Work Assignments:
 Construct control lines as direct as possible.
 Insert progressive hose lays.
 Improve and hold established control lines.
 Implement structure defense plan, with an emphasis on perimeter control.

7. Special Instructions:
 Buckbar Rd. off limits to Water Tenders, alternate route use Pleasant Valley Rd.

AMB ALS 801
REAF C. Engelhardt, J. Mabe, P. Foulk

8. Communications							
Name	Ch	Function	Rx Freq	Rx Tone	Tx Freq	Tx Tone	Notes
COMMAND: Please refer to Communications Plan							
CDF T28	9	TACTICAL	151.1825N	192.8	151.1825N	192.8	
A/G TAC	14	AIR TO GROUND	164.1375N		164.1375N		
CALCORD	15	MEDICAL	156.0750N	156.7	156.0750N	156.7	MEDICAL COORDINATION
GUARD 27	16	EMERGENCY	168.6250N		168.6250N	110.9	EMERGENCY USE ONLY

9. Prepared by: Name:	J. Heald	RESL	24 Hr Shift: 15
	Signature:		12 Hr Shift: 36
ICS 204	Date/Time: 8/26/2021 2200		Total: 64

ASSIGNMENT LIST (ICS 204 WF)

CONTROLLED UNCLASSIFIED
INFORMATION//BASIC

1. Incident Name:	2. Operational Period:	3. Branch	Division
Caldor Incident	Date From: 08/27/21 Date To: 08/28/21 Time From: 0700 Time To: 0700	X	I
4. Operations Personnel:		Page 1 of 2	India

Operations Section Chief: E. Schwab / B. Monday	Night Ops: T. Ernst
Branch Director: M. Wallen / S. Long (T)	Branch Safety: D. White / R. Menise
Division/Group Supervisor: M. Loeffler (12) / Porazzo (T) (12)	Air Attack: A. Sanchez

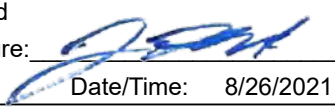
5. Resources Assigned:	** Resources Below in Bold are 12 Hour **						
Resource Identifier	ALS	LWD	Leader	Personnel	Request #	Hours	Reporting Location
T/F CALDOR 3 (3,3,3,3,3,3)		8/30	P. Preston	24	E-9004	0700-1900	DP 30
ENG ANF 331		8/29	L. Winkler	4	E-3	0700-1900	DP 30
ENG ENF 368		8/28	B. Quinoz	5	E-43	0700-1900	DP 30
ENG SRF 342		9/1	J. Luis	5	E-107	0700-1900	DP 30
ENG BDF 1R		9/1	A. Tinker	5	E-110	0700-1900	DP 30
ENG BDF 5R		9/1	T. Norwood	5	E-112	0700-1900	DP 30
STG NEU 9235G (CDCR)			J. Russell	36	C-20013	0700-0700	DP 30
STG HEU 9122G (CDCR)			<i>B. Murphey</i>	33	C-20027	0700-0700	DP 30
CRW EL CARISO IHC		8/30	N. Mendoza	20	C-8	0700-1900	DP 30
CRW CNF CHEROKEE IHC			B. Corbit	22	C-28	1900-0700	DP 30
CRW PVT C-33			A. Avila	20	C-33	1900-0700	DP 30
CRW PVT C-35			A. Gomez	20	C-35	1900-0700	DP 30
DOZ PVT E-261			L. Herbst	2	E-261	0700-0700	DP 30
DOZ PVT E-259			R. Wyman	1	E-259	0700-1900	DP 30
DOZ PVT E-20637			B. Nettles	3	E-20637	0700-0700	DP 30
DOZ PVT E-20540			K. Van Pelt	3	E-20540	0700-0700	DP 30
W/T PVT E-20274		9/4	D. Escoffier	1	E-20274	0700-1900	DP 30
W/T PVT E-20276			R. Straley	1	E-20276	0700-1900	DP 30

6. Work Assignments:
 Prepare structures for defensive actions.
 Construct control lines as direct as possible.
 Improve and hold established control lines.
 Insert progressive hose lays.

7. Special Instructions:
 Buckbar Rd. off limits to Water Tenders, alternate route use Pleasant Valley Rd.

AMB ALS 801
REAF J. Mabe, P. Foulk, C. Engehardt

8. Communications							
Name	Ch	Function	Rx Freq	Rx Tone	Tx Freq	Tx Tone	Notes
COMMAND: Please refer to Communications Plan							
CDF T29	9	TACTICAL	151.3475N	192.8	151.3475N	192.8	
A/G TAC	14	AIR TO GROUND	164.1375N		164.1375N		
CALCORD	15	MEDICAL	156.0750N	156.7	156.0750N	156.7	MEDICAL COORDINATION
GUARD 27	16	EMERGENCY	168.6250N		168.6250N	110.9	EMERGENCY USE ONLY

9. Prepared by: Name: J. Heald RESL 24 Hr Shift: 77
 Signature:  12 Hr Shift: 38
ICS 204 Date/Time: 8/26/2021 2200 Total: 210

ASSIGNMENT LIST (ICS 204 WF)

CONTROLLED UNCLASSIFIED
INFORMATION//BASIC

1. Incident Name: Caldor Incident	2. Operational Period: Date From: 08/27/21 Date To: 08/28/21 Time From: 0700 Time To: 0700	3. Branch Division XV J Page 1 of 3 Juliet
--	---	---

4. Operations Personnel:	
Operations Section Chief: E. Schwab / B. Monday	Night Ops: T. Ernst
Branch Director: B. Loomis (12)	Branch Safety: C. Rutherglen / R. Barton (12)
Division/Group Supervisor: B. Stewart / L. Brown (T)	Air Attack: A. Sanchez

5. Resources Assigned:		** Resources Below in Bold are 12 Hour **					
Resource Identifier	ALS	LWD	Leader	Personnel	Request #	Hours	Reporting Location
STC TUU 9410C			W. Goodman	16	E-20197	0700-0700	DP 23
STC SCU 9160C			C Collins	16	E-20545	0700-0700	DP 23
T/F XTB 4234 (3,3,3,6)			S. Pevenage	17	E-20243	0700-0700	DP 23
T/F CALDOR 7 (4,4,6,6)			B. Marra	19	E-9235	1900-0700	DP 23
T/F CALDOR 5 (3,3,4,4,6)			M. Gahley	16	E-9249	0700-1900	DP 23
ENG TNF 1267			J. Johnson	4	E-340	1900-0700	DP 23
ENG TFD 2425			C. Belliston	5	E-307	1900-0700	DP 23
ENG NWS 301			M. Winburn	6	E-308	0700-1900	DP 23
ENG CLG 171			K. Krider	3	E-20469	0700-0700	DP 23
ENG MTSWS T6			D. Geissal	2	E-269	0700-1900	DP 23
ENG CTF 641		9/5	E. Horn	4	E-270	0700-1900	DP 23
ENG COPALX BRUSH 2			K. Cashman	3	E-271	0700-1900	DP 23
ENG SHF 642		9/6	H. Goulet	5	E-274	0700-1900	DP 23
ENG ASF 631			T. Brecht	4	E-310	1900-0700	DP 23
ENG RFC 5627			N. Spence	4	E-312	1900-0700	DP 23
CRW GID ARAVAIPA IHC			W. Irish	19	C-50	0700-1900	DP 23
CRW TDO ZEPHYR			J. Correll	20	C-20059	0700-1900	DP 23
CRW UTU SUP MOD O-257				8	O-257	1900-0700	DP 23

6. Work Assignments:
 Prepare structures for defensive actions.
 Construct control lines as direct as possible.
 Plan secondary control lines, begin if possible.

7. Special Instructions:
 Buckbar Rd. off limits to Water Tenders, alternate route use Pleasant Valley Rd.

AMB ALS 5
REAF C. Hutcheson, K. Marti

8. Communications							
Name	Ch	Function	Rx Freq	Rx Tone	Tx Freq	Tx Tone	Notes
COMMAND: Please refer to Communications Plan							
NIFC T3	10	TACTICAL	168.6000N		168.6000N		
A/G TAC	14	AIR TO GROUND	164.1375N		164.1375N		
CALCORD	15	MEDICAL	156.0750N	156.7	156.0750N	156.7	MEDICAL COORDINATION
GUARD 27	16	EMERGENCY	168.6250N		168.6250N	110.9	EMERGENCY USE ONLY

9. Prepared by: Name:	J. Heald	RESL	24 Hr Shift: 36
	Signature:		12 Hr Shift: 75
ICS 204	Date/Time: 8/26/2021 2200		Total: 171

ASSIGNMENT LIST (ICS 204 WF)

CONTROLLED UNCLASSIFIED
INFORMATION//BASIC

1. Incident Name: Caldor Incident	2. Operational Period: Date From: 08/27/21 Date To: 08/28/21 Time From: 0700 Time To: 0700	3. Branch Division XV J Page 2 of 3 Juliet
--	---	---

4. Operations Personnel:	
Operations Section Chief: E. Schwab / B. Monday	Night Ops: T. Ernst
Branch Director: B. Loomis (12)	Branch Safety: C. Rutherglen / R. Barton (12)
Division/Group Supervisor: B. Stewart / L. Brown (T)	Air Attack: A. Sanchez

5. Resources Assigned:		** Resources Below in Bold are 12 Hour **					
Resource Identifier	ALS	LWD	Leader	Personnel	Request #	Hours	Reporting Location
CRW BDF Del Rosa IHC		9/1	D. Borero	16	C-6	0700-1900	DP 23
CRW NAVAJO IHC			V. Smith	18	C-29	1900-0700	DP 23
CRW NLTX SLIDE MOUNTAIN		9/6	J. Higgins	19	C-52	0700-1900	DP 23
CRW PVT C-34			A. Perez	20	C-34	1900-0700	DP 23
CRW NLTX RIFLE PEAK			J. Ellis	21	C-43	0700-1900	DP 23
CRW PVT C-56			M. Fleek	20	C-56	1900-0700	DP 23
STL TUU 9416L			S. Braziel	9	E-20596	0700-0700	DP 23
STL LNU 9144L			D. Bohan	9	E-20635	0700-0700	DP 23
DOZ AEU 2741			J. Cook	2	E-13	0700-0700	DP 23
DOZ LNU 1448			B. Madole	2	E-20634	0700-1900	DP 23
DOZ ENF 24030		8/29	L. Benson	2	E-20022	0700-0700	DP 23
DOZ PVT E-392			K. Boyd	3	E-392	0700-0700	DP 23
DOZ PVT E-20023			D. Spalwn	2	E-20023	0700-0700	DP 23
DOZ PVT E-20265			T. Norton	2	E-20265	0700-0700	DP 23
DOZ PVT E-20266			T. Mcauliffe	1	E-20266	0700-1900	DP 23
DOZ PVT E-20531			C. Enriques	2	E-20531	0700-0700	DP 23
DOZ PVT E-20532			G. Pascolla	2	E-20532	0700-0700	DP 23
DOZ PVT E-20636			T. Stevenson	2	E-20636	0700-0700	DP 23

6. Work Assignments:
 Prepare structures for defensive actions.
 Construct control lines as direct as possible.
 Plan secondary control lines, begin if possible.

7. Special Instructions:
 Buckbar Rd. off limits to Water Tenders, alternate route use Pleasant Valley Rd.

AMB ALS 5
REAF C. Hutcheson, K. Marti

8. Communications							
Name	Ch	Function	Rx Freq	Rx Tone	Tx Freq	Tx Tone	Notes
COMMAND: Please refer to Communications Plan							
NIFC T3	10	TACTICAL	168.6000N		168.6000N		
A/G TAC	14	AIR TO GROUND	164.1375N		164.1375N		
CALCORD	15	MEDICAL	156.0750N	156.7	156.0750N	156.7	MEDICAL COORDINATION
GUARD 27	16	EMERGENCY	168.6250N		168.6250N	110.9	EMERGENCY USE ONLY

9. Prepared by: Name:	J. Heald	RESL	24 Hr Shift: 29
	Signature:		12 Hr Shift: 59
ICS 204	Date/Time: 8/26/2021 2200		Total: 152

ASSIGNMENT LIST (ICS 204 WF)

CONTROLLED UNCLASSIFIED
INFORMATION//BASIC

1. Incident Name: Caldor Incident	2. Operational Period: Date From: 08/27/21 Date To: 08/28/21 Time From: 0700 Time To: 0700	3. Branch Division XV J Page 3 of 3 Juliet
--	---	--

4. Operations Personnel:	
Operations Section Chief: E. Schwab / B. Monday	Night Ops: T. Ernst
Branch Director: B. Loomis (12)	Branch Safety: C. Rutherglen / R. Barton (12)
Division/Group Supervisor: B. Stewart / L. Brown (T)	Air Attack: A. Sanchez

5. Resources Assigned:		** Resources Below in Bold are 12 Hour **					
Resource Identifier	ALS	LWD	Leader	Personnel	Request #	Hours	Reporting Location
DOZ PVT E-20187			M. Hauber	2	E-20187	0700-0700	DP 23
W/T PVT E-20008			P. Indihar	1	E-20008	0700-1900	DP 23
W/T PVT E-20009			R. Keene	1	E-20009	0700-1900	DP 23
W/T PVT E-20017			B. Rose	1	E-20017	0700-1900	DP 23
W/T PVT E-20173			N. Baldiviez	1	E-20173	0700-1900	DP 23
W/T PVT E-20177			R. Hurl	2	E-20177	0700-0700	DP 23
W/T PVT E-20280			J. Corley	1	E-20280	0700-1900	DP 23
MAS PVT E-20035			P. Leuzinger	2	E-20035	0700-1900	DP 23
MAS PVT E-20036			B. Gardner	1	E-20036	0700-1900	DP 23
MAST PVT E-20389			S. Hill	2	E-20389	0700-1900	DP 23
HEQB JANES		9/6	B. Janes	1	O-222	0700-1900	DP 23
HEQB-T WEBER		9/6	S. Weber	1	O-218	0700-1900	DP 23
HEQB WYMAN			K. Wyman	1	O-221	0700-1900	DP 23
HEQB-T HARNOS			T. Harnos	1	O-217	0700-1900	DP 23
FALM PVT O-232				2	O-232	0700-1900	DP 23

6. Work Assignments:
 Prepare structures for defensive actions.
 Construct control lines as direct as possible.
 Plan secondary control lines, begin if possible.

7. Special Instructions:
 Buckbar Rd. off limits to Water Tenders, alternate route use Pleasant Valley Rd.

AMB ALS 5
REAF C. Hutcheson, K. Marti

8. Communications							
Name	Ch	Function	Rx Freq	Rx Tone	Tx Freq	Tx Tone	Notes
COMMAND: Please refer to Communications Plan							
NIFC T3	10	TACTICAL	168.6000N		168.6000N		
A/G TAC	14	AIR TO GROUND	164.1375N		164.1375N		
CALCORD	15	MEDICAL	156.0750N	156.7	156.0750N	156.7	MEDICAL COORDINATION
GUARD 27	16	EMERGENCY	168.6250N		168.6250N	110.9	EMERGENCY USE ONLY

9. Prepared by: Name:	J. Heald	RESL	24 Hr Shift: 4
	Signature:		12 Hr Shift: 14
ICS 204	Date/Time: 8/26/2021 2200		Total: 20

ASSIGNMENT LIST (ICS 204 WF)

CONTROLLED UNCLASSIFIED
INFORMATION//BASIC

1. Incident Name:	2. Operational Period:	3. Branch	Division
Caldor Incident	Date From: 08/27/21 Date To: 08/28/21 Time From: 0700 Time To: 0700	XV	L
4. Operations Personnel:		Page 1 of 2	Lima

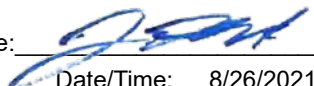
Operations Section Chief: E. Schwab / B. Monday	Night Ops: T. Ernst
Branch Director: B. Loomis (12)	Branch Safety: C. Rutherglen / R. Barton (12)
Division/Group Supervisor: J. Chester (12) / K. Perreault (T) (12)	Air Attack: A. Sanchez

5. Resources Assigned:	** Resources Below in Bold are 12 Hour **							
Resource Identifier	ALS	LWD	Leader	Personnel	Request #	Hours	Reporting Location	
T/F CALDOR 8 (3,3,4,4,6)			N. Bristol	22	E-9234	0700-1900	DP 13	
ENG MNF 345		8/29	H. Moreno	5	E-5	0700-1900	DP 13	
ENG MNF 332		8/28	C. Sampley	3	E-6	0700-1900	DP 13	
ENG SQF 332		8/28	R. Betancourt	5	E-22	0700-1900	DP 13	
ENG CNF 322		8/28	C. Hamilton	5	E-27	0700-1900	DP 13	
ENG INF 331		8/28	B. Hubbard	5	E-37	0700-1900	DP 13	
ENG BDF 330		9/1	C. Coward	5	E-111	0700-1900	DP 13	
ENG TNF 72		9/3	M. Bradford	5	E-224	0700-1900	DP 13	
ENG SHF 363		9/5	K. Smyth	5	E-357	0700-1900	DP 13	
ENG KNF 16		9/5	J. Morgan	6	E-360	0700-1900	DP 13	
ENG NDF 5121		8/31	A. Jares	6	E-20159	0700-1900	DP 13	
CRW SIERRA FRONT		9/6	A. Sharp	20	C-53	0700-1900	DP 13	
CRW Blue Mountain 5		8/29		20	C-15	0700-1900	DP 13	
CRW PVT C-58		9/5	L. Tores	20	C-58	0700-1900	DP 13	
DOZ NEU 2346			D. Minor	2	E-20667	0700-0700	DP 13	
DOZ PVT E-20538			P. Hatlestad	2	E-20538	0700-0700	DP 13	
DOZ PVT E-20639			T. Hewitt	4	E-20639	0700-0700	DP 13	
DOZ PVT E-20647			B. Waddell	2	E-20647	0700-0700	DP 13	

6. Work Assignments:
 Prepare structures for defensive actions.
 Construct control lines as direct as possible.
 Improve and hold established control lines.

7. Special Instructions:
 Buckbar Rd. off limits to Water Tenders, alternate route use Pleasant Valley Rd.
 Prepare for firing Silverfork to DIV J.
AMB ALS 5
REAF J. Serin, J. Cooper

8. Communications							
Name	Ch	Function	Rx Freq	Rx Tone	Tx Freq	Tx Tone	Notes
COMMAND: Please refer to Communications Plan							
NIFC T6	9	TACTICAL	166.7750N		166.7750N		
A/G TAC	14	AIR TO GROUND	164.1375N		164.1375N		
CALCORD	15	MEDICAL	156.0750N	156.7	156.0750N	156.7	MEDICAL COORDINATION
GUARD 27	16	EMERGENCY	168.6250N		168.6250N	110.9	EMERGENCY USE ONLY

9. Prepared by: Name: J. Heald RESL 24 Hr Shift: 10
 Signature:  12 Hr Shift: 119
 ICS 204 Date/Time: 8/26/2021 2200 Total: 142

ASSIGNMENT LIST (ICS 204 WF)

CONTROLLED UNCLASSIFIED
INFORMATION//BASIC

1. Incident Name:	2. Operational Period:	3. Branch	Division
Caldor Incident	Date From: 08/27/21 Date To: 08/28/21 Time From: 0700 Time To: 0700	XV	L
4. Operations Personnel:		Page 2 of 2	Lima

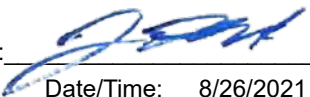
Operations Section Chief: E. Schwab / B. Monday	Night Ops: T. Ernst
Branch Director: B. Loomis (12)	Branch Safety: C. Rutherglen / R. Barton (12)
Division/Group Supervisor: J. Chester (12) / K. Perreault (T) (12)	Air Attack: A. Sanchez

5. Resources Assigned:		** Resources Below in Bold are 12 Hour **					
Resource Identifier	ALS	LWD	Leader	Personnel	Request #	Hours	Reporting Location
DOZ PVT E-20659			J. Gillick	2	E-20659	0700-0700	DP 13
DOZ PVT E-265			B. Suttles	2	E-265	0700-0700	DP 13
W/T BDF 251		8/31	F. Delgato	2	E-67	0700-1900	DP 13
W/T MDF 257		9/1	H. Venuto	1	E-113	0700-1900	DP 13
CHIP PVT E-20611			M. Nieves	2	E-20611	0700-1900	DP 13
FALM PVT O-20141			J. Marshall	2	O-20141	0700-1900	DP 13
FALM PVT O-20142				2	O-20142	0700-1900	DP 13
HEQB HERREN			C. Herren	1	O-25	0700-1900	DP 13

6. Work Assignments:
 Prepare structures for defensive actions.
 Construct control lines as direct as possible.
 Improve and hold established control lines.

7. Special Instructions:
 Buckbar Rd. off limits to Water Tenders, alternate route use Pleasant Valley Rd.
 Prepare for firing Silverfork to DIV J.
AMB ALS 5
REAF J. Serin, J. Cooper

8. Communications							
Name	Ch	Function	Rx Freq	Rx Tone	Tx Freq	Tx Tone	Notes
COMMAND: Please refer to Communications Plan							
NIFC T6	9	TACTICAL	166.7750N		166.7750N		
A/G TAC	14	AIR TO GROUND	164.1375N		164.1375N		
CALCORD	15	MEDICAL	156.0750N	156.7	156.0750N	156.7	MEDICAL COORDINATION
GUARD 27	16	EMERGENCY	168.6250N		168.6250N	110.9	EMERGENCY USE ONLY

9. Prepared by: Name: J. Heald RESL 24 Hr Shift: 4
 Signature:  12 Hr Shift: 8
 ICS 204 Date/Time: 8/26/2021 2200 Total: 14

ASSIGNMENT LIST (ICS 204 WF)

CONTROLLED UNCLASSIFIED
INFORMATION//BASIC

1. Incident Name: Caldor Incident	2. Operational Period: Date From: 08/27/21 Date To: 08/28/21 Time From: 0700 Time To: 0700	3. Branch Division XV Contingency
4. Operations Personnel:		Page 1 of 1

Operations Section Chief: E. Schwab / B. Monday	Night Ops: T. Ernst
Branch Director: B. Loomis (12)	Branch Safety: C. Rutherglen / R. Barton (12)
Division/Group Supervisor:	Air Attack: A. Sanchez

5. Resources Assigned:		** Resources Below in Bold are 12 Hour **					
Resource Identifier	ALS	LWD	Leader	Personnel	Request #	Hours	Reporting Location
DOZ PVT E-267			K. Honey	2	E-267	0700-1900	DP 16
DOZ PVT E-263			T. Hargis	2	E-263	0700-0700	DP 16
DOZ PVT E-20696			G. Chernoh	3	E-20696	0700-0700	DP 16
DOZ PVT E-20675			J. Worrell	2	E-20675	0700-0700	DP 16
DOZ PVT E-20676			B. Moniz	3	E-20676	0700-0700	DP 16
DOZ PVT E-20697			J. Ellis	1	E-20697	0700-1900	DP 16
DOZ PVT E-29			M. Armstrong	1	E-29	0700-1900	DP 16
DOZ PVT E-20263		8/27	D. Rector	1	E-20263	0700-1900	DP 16
W/T PVT E-20682			L. Presidio	1	E-20682	0700-1900	DP 16
W/T PVT E-388			J. Richardson	1	E-388	0700-1900	DP 16
MAST PVT E-20028			A. Harris	1	E-20028	0700-1900	DP 16
SKG PVT E-248			E. Jungers	2	E-248	0700-1900	DP 16

6. Work Assignments:

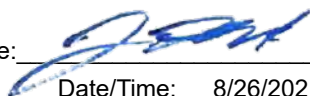
7. Special Instructions:

8. Communications							
Name	Ch	Function	Rx Freq	Rx Tone	Tx Freq	Tx Tone	Notes
COMMAND: Please refer to Communications Plan							
A/G TAC	14	AIR TO GROUND	164.1375N		164.1375N		
CALCORD	15	MEDICAL	156.0750N	156.7	156.0750N	156.7	MEDICAL COORDINATION
GUARD 27	16	EMERGENCY	168.6250N		168.6250N	110.9	EMERGENCY USE ONLY

9. Prepared by: Name:	J. Heald	RESL	
	Signature:		
ICS 204	Date/Time: 8/26/2021 2200		
		24 Hr Shift: 10	
		12 Hr Shift: 9	
		Total: 20	

ASSIGNMENT LIST (ICS 204 WF)

CONTROLLED UNCLASSIFIED
INFORMATION//BASIC

1. Incident Name:		2. Operational Period:				3. Branch		Division	
Caldor Incident		Date From: 08/27/21		Date To: 08/28/21		XX		N	
		Time From: 0700		Time To: 0700		Page 1 of 2		November	
4. Operations Personnel:									
Operations Section Chief: E. Schwab / B. Monday					Night Ops: T. Ernst				
Branch Director:					Branch Safety: B. Hubby / S. Pfeifer				
Division/Group Supervisor: W. Almand (12)					Air Attack: A. Sanchez				
5. Resources Assigned:									
** Resources Below in Bold are 12 Hour **									
Resource Identifier	ALS	LWD	Leader	Personnel	Request #	Hours	Reporting Location		
ENG LKR 8531			K. Bonham	5	E-282	0700-1900	ICP		
ENG HTF 451		9/2	J. Hart	5	E-181	0700-1900	ICP		
ENG BOD 1411		9/2	R. Hansen	3	E-203	0700-1900	ICP		
ENG TIA 696		8/29	D. Stordy	4	E-35	0700-1900	ICP		
ENG BNP 675			A. Oggenkamp	3	E-281	0700-1900	ICP		
ENG OKS 96		9/3	D. Morris	2	E-20091	0700-1900	ICP		
CRW TCU 4449 (CDF)			T. Swanson	7	C-20034	0700-1900	ICP		
CRW PVT C-54		9/5	A. Hergert	20	C-54	0700-1900	ICP		
CRW PVT C-55		9/5	J. Foward	20	C-55	0700-1900	ICP		
DOZ PVT E-20179			J. Snyder	3	E-20179	0700-0700	ICP		
DOZ PVT E-20182			A. Miller	3	E-20182	0700-0700	ICP		
DOZ PVT E-20264		9/4	D. Kirby	2	E-20264	0700-0700	ICP		
DOZ PVT E-20534			A. Bushey	2	E-20534	0700-0700	ICP		
DOZ PVT E-20536			J. Cameron	2	E-20536	0700-1900	ICP		
DOZ PVT E-20539			C. Klauer	3	E-20539	0700-0700	ICP		
DOZ PVT E-20638			N. Schmidt	3	E-20638	0700-0700	ICP		
W/T PVT E-20286			J. Baugh	1	E-20286	0700-1900	ICP		
W/T PVT E-20287			T. Dilks	1	E-20287	0700-1900	ICP		
6. Work Assignments:									
Implement structure defense plan, with an emphasis on perimeter control.									
Construct control lines as direct as possible.									
Improve and hold established control lines.									
Insert progressive hose lays.									
7. Special Instructions:									
Buckbar Rd. off limits to Water Tenders, alternate route use Pleasant Valley Rd.									
EMTF Rebolledo (12 day), EMPF McCarthy (12 day)									
REAF J. Serin, J. Cooper, A. Speering, P. Yerger									
8. Communications									
Name	Ch	Function	Rx Freq	Rx Tone	Tx Freq	Tx Tone	Notes		
COMMAND: Please refer to Communications Plan									
NIFC T1	8	TACTICAL	168.0500N		168.0500N				
A/G TAC	14	AIR TO GROUND	164.1375N		164.1375N				
CALCORD	15	MEDICAL	156.0750N	156.7	156.0750N	156.7	MEDICAL COORDINATION		
GUARD 27	16	EMERGENCY	168.6250N		168.6250N	110.9	EMERGENCY USE ONLY		
9. Prepared by: Name:									
J. Heald					RESL		24 Hr Shift:		10
Signature: 							12 Hr Shift:		69
ICS 204					Date/Time: 8/26/2021 2200		Total:		89

ASSIGNMENT LIST (ICS 204 WF)

CONTROLLED UNCLASSIFIED
INFORMATION//BASIC

1. Incident Name: Caldor Incident	2. Operational Period: Date From: 08/27/21 Date To: 08/28/21 Time From: 0700 Time To: 0700	3. Branch Division XX N Page 2 of 2 November
--	---	--

4. Operations Personnel:	
Operations Section Chief: E. Schwab / B. Monday	Night Ops: T. Ernst
Branch Director:	Branch Safety: B. Hubby / S. Pfeifer
Division/Group Supervisor: W. Almand (12)	Air Attack: A. Sanchez

5. Resources Assigned:		** Resources Below in Bold are 12 Hour **					
Resource Identifier	ALS	LWD	Leader	Personnel	Request #	Hours	Reporting Location
W/T PVT E-20288			R. Barker	1	E-20288	0700-1900	ICP

6. Work Assignments:
 Implement structure defense plan, with an emphasis on perimeter control.
 Construct control lines as direct as possible.
 Improve and hold established control lines.
 Insert progressive hose lays.

7. Special Instructions:
 Buckbar Rd. off limits to Water Tenders, alternate route use Pleasant Valley Rd.

EMTF Rebolledo (12 day), EMPF McCarthy (12 day)
REAF J. Serin, J. Cooper, A. Speering, P. Yerger

8. Communications							
Name	Ch	Function	Rx Freq	Rx Tone	Tx Freq	Tx Tone	Notes
COMMAND: Please refer to Communications Plan							
NIFC T1	8	TACTICAL	168.0500N		168.0500N		
A/G TAC	14	AIR TO GROUND	164.1375N		164.1375N		
CALCORD	15	MEDICAL	156.0750N	156.7	156.0750N	156.7	MEDICAL COORDINATION
GUARD 27	16	EMERGENCY	168.6250N		168.6250N	110.9	EMERGENCY USE ONLY

9. Prepared by: Name: J. Heald RESL 24 Hr Shift: 0
 Signature: 12 Hr Shift: 1
ICS 204 Date/Time: 8/26/2021 2200 Total: 1

ASSIGNMENT LIST (ICS 204 WF)

CONTROLLED UNCLASSIFIED
INFORMATION//BASIC

1. Incident Name: <p style="text-align: center;">Caldor Incident</p>	2. Operational Period: Date From: 08/27/21 Date To: 08/28/21 Time From: 0700 Time To: 0700	3. Branch Division <p style="text-align: center;">XX P</p> <p style="text-align: center;">Page 1 of 1 Papa</p>
---	---	---

4. Operations Personnel:	
Operations Section Chief: E. Schwab / B. Monday	Night Ops: T. Ernst
Branch Director:	Branch Safety: B. Hubby / S. Pfeifer
Division/Group Supervisor:	Air Attack: A. Sanchez

5. Resources Assigned:		** Resources Below in Bold are 12 Hour **					
Resource Identifier	ALS	LWD	Leader	Personnel	Request #	Hours	Reporting Location
							ICP

6. Work Assignments:
 Implement structure defense plan, with an emphasis on perimeter control.
 Construct control lines as direct as possible.
 Improve and hold established control lines.
 Insert progressive hose lays.

7. Special Instructions:
 Buckbar Rd. off limits to Water Tenders, alternate route use Pleasant Valley Rd.

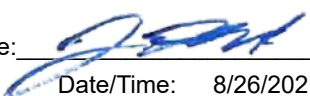
EMTF Rebolledo (12 day), EMPF McCarthy (12 day)
REAF A. Speering, P. Yerger

8. Communications							
Name	Ch	Function	Rx Freq	Rx Tone	Tx Freq	Tx Tone	Notes
COMMAND: Please refer to Communications Plan							
NIFC T7	11	TACTICAL	168.2500N		168.2500N		
A/G TAC	14	AIR TO GROUND	164.1375N		164.1375N		
CALCORD	15	MEDICAL	156.0750N	156.7	156.0750N	156.7	MEDICAL COORDINATION
GUARD 27	16	EMERGENCY	168.6250N		168.6250N	110.9	EMERGENCY USE ONLY

9. Prepared by: Name:	J. Heald Signature:	RESL	24 Hr Shift: 0 12 Hr Shift: 0
ICS 204	Date/Time: 8/26/2021 2200		Total: 0

ASSIGNMENT LIST (ICS 204 WF)

CONTROLLED UNCLASSIFIED
INFORMATION//BASIC

1. Incident Name:		2. Operational Period:				3. Branch		Division	
Caldor Incident		Date From: 08/27/21		Date To: 08/28/21		XX		R	
		Time From: 0700		Time To: 0700		Page 1 of 2		Romeo	
4. Operations Personnel:									
Operations Section Chief: E. Schwab / B. Monday					Night Ops: T. Ernst				
Branch Director:					Branch Safety: B. Hubby / S. Pfeifer				
Division/Group Supervisor: J. Plummer (12) / R. Hamly (T) (12)					Air Attack: A. Sanchez				
5. Resources Assigned:									
** Resources Below in Bold are 12 Hour **									
Resource Identifier	ALS	LWD	Leader	Personnel	Request #	Hours	Reporting Location		
ENG SQF 345		8/28	D. Wild	5	E-21	0700-1900	DP 19		
ENG CNF 335		8/28	S. Cox	3	E-26	0700-1900	DP 19		
ENG BDF 13		9/1	M. Gomez	5	E-109	0700-1900	DP 19		
ENG PVT E-20378			K. Lester	3	E-20378	0700-1900	DP 19		
CRW CND Kern Valley IHC		8/28	K. Clendenen	19	C-2	0700-1900	DP 19		
CRW PVT C-48			A. Rhea	20	C-48	0700-1900	DP 19		
CRW IDSTF Sawtooth IHC			K. West	21	C-51	0700-1900	DP 19		
CRW NWS Sierra 2			E. Roussel	26	C-20040	0700-0700	DP 19		
CRW NWS Humboldt 1			J. Johnson	25	C-20041	0700-0700	DP 19		
DOZ MDF 4		8/29	E. Allen	2	E-20	0700-1900	DP 19		
DOZ PVT E-46			M. Emerson	4	E-46	0700-0700	DP 19		
W/T PVT E-20278			J. Thoene	2	E-20278	0700-0700	DP 19		
W/T PVT E-20345		9/5	D. Long	1	E-20345	0700-1900	DP 19		
W/T PVT E-20346			T. Ayars	2	E-20346	0700-0700	DP 19		
MAST PVT E-58			C. Findleton	1	E-58	0700-1900	DP 19		
MAST PVT E-20026			T. Krisman	2	E-20026	0700-1900	DP 19		
MAST PVT E-20027			A. Dinatale	1	E-20027	0700-1900	DP 19		
FELB PVT E-54			R. Fithen	2	E-54	0700-1900	DP 19		
6. Work Assignments:									
Construct control lines as direct as possible.									
Prepare indirect control line for possible firing operation.									
Improve and hold established control lines.									
7. Special Instructions:									
Buckbar Rd. off limits to Water Tenders, alternate route use Pleasant Valley Rd.									
EMTF Rebolledo (12 day), EMPF McCarthy (12 day)									
REAF A. Speering, P. Yerger									
8. Communications									
Name	Ch	Function	Rx Freq	Rx Tone	Tx Freq	Tx Tone	Notes		
COMMAND: Please refer to Communications Plan									
NIFC T7	11	TACTICAL	168.2500N		168.2500N				
A/G TAC	14	AIR TO GROUND	164.1375N		164.1375N				
CALCORD	15	MEDICAL	156.0750N	156.7	156.0750N	156.7	MEDICAL COORDINATION		
GUARD 27	16	EMERGENCY	168.6250N		168.6250N	110.9	EMERGENCY USE ONLY		
9. Prepared by: Name:									
J. Heald					RESL		24 Hr Shift: 59		
Signature: 							12 Hr Shift: 74		
Date/Time: 8/26/2021 2200							Total: 144		
ICS 204									

ASSIGNMENT LIST (ICS 204 WF)

CONTROLLED UNCLASSIFIED
INFORMATION//BASIC

1. Incident Name: Caldor Incident	2. Operational Period: Date From: 08/27/21 Date To: 08/28/21 Time From: 0700 Time To: 0700	3. Branch Division XX R Page 2 of 2 Romeo
--	---	--

4. Operations Personnel:	
Operations Section Chief: E. Schwab / B. Monday	Night Ops: T. Ernst
Branch Director:	Branch Safety: B. Hubby / S. Pfeifer
Division/Group Supervisor: J. Plummer (12) / R. Hamly (T) (12)	Air Attack: A. Sanchez

5. Resources Assigned:		** Resources Below in Bold are 12 Hour **					
Resource Identifier	ALS	LWD	Leader	Personnel	Request #	Hours	Reporting Location
FELB PVT E-242			K. Cates	2	E-242	0700-1900	DP 19
FELB PVT E-20488			G. Gladen	1	E-20488	0700-1900	DP 19
SKDGN PVT E-63			C. Haugen	1	E-63	0700-1900	DP 19
SKDGN PVT E-245			R. Leflar	2	E-245	0700-1900	DP 19
SKDGN PVT E-246			W. Emery	1	E-246	0700-1900	DP 19
HEQB SHIRK			Shirk	1	E-70	0700-0700	DP 19

6. Work Assignments:
 Construct control lines as direct as possible.
 Prepare indirect control line for possible firing operation.
 Improve and hold established control lines.

7. Special Instructions:
 Buckbar Rd. off limits to Water Tenders, alternate route use Pleasant Valley Rd.

EMTF Rebolledo (12 day), EMPF McCarthy (12 day)
REAF A. Speering, P. Yerger

8. Communications							
Name	Ch	Function	Rx Freq	Rx Tone	Tx Freq	Tx Tone	Notes
COMMAND: Please refer to Communications Plan							
NIFC T7	11	TACTICAL	168.2500N		168.2500N		
A/G TAC	14	AIR TO GROUND	164.1375N		164.1375N		
CALCORD	15	MEDICAL	156.0750N	156.7	156.0750N	156.7	MEDICAL COORDINATION
GUARD 27	16	EMERGENCY	168.6250N		168.6250N	110.9	EMERGENCY USE ONLY

9. Prepared by: Name:	J. Heald	RESL	24 Hr Shift: 1
	Signature:		12 Hr Shift: 7
ICS 204	Date/Time: 8/26/2021 2200		Total: 8

ASSIGNMENT LIST (ICS 204 WF)

CONTROLLED UNCLASSIFIED
INFORMATION//BASIC

1. Incident Name: Caldor Incident	2. Operational Period: Date From: 08/27/21 Date To: 08/28/21 Time From: 0700 Time To: 0700	3. Branch Division XXX T Page 1 of 1 Tango
--	---	--

4. Operations Personnel:	
Operations Section Chief: E. Schwab / B. Monday	Night Ops: T. Ernst
Branch Director: N. Hale	Branch Safety: B. Diregolo
Division/Group Supervisor: P. Preston (12) / S. Cox (T) (12 PM)	Air Attack: A. Sanchez

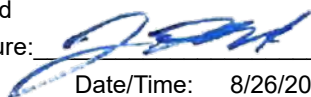
5. Resources Assigned:		** Resources Below in Bold are 12 Hour **					
Resource Identifier	ALS	LWD	Leader	Personnel	Request #	Hours	Reporting Location
ENG SRF 312		9/1	E. Johnson	5	E-106	0700-1900	DP 19
ENG BDF 311		9/1	A. Rodriguez	5	E-108	0700-1900	DP 19
ENG MNF 353			C. Coleman	5	E-285	0700-1900	DP 19
ENG STF 332		9/5	B. Osana	4	E-368	0700-1900	DP 19
ENG OUF 692			J. Kerr	6	E-275	1900-0700	DP 19
ENG LFC 7679			J. Stork	3	E-278	1900-0700	DP 19
ENG DEF 364			I. Salsky	5	E-336	1900-0700	DP 19
ENG DEF 636			A. Saphier	5	E-337	1900-0700	DP 19
ENG NSS B5361		9/2	J. Gonzalez	4	E-20168	0700-1900	DP 19
ENG LCD 3605		9/5	M. Munoz	5	E-20362	0700-1900	DP 19
ENG SLR 6257		9/3	W. Hall	4	E-20365	0700-1900	DP 19
ENG PVT E-20466		9/5	L. Brisce	3	E-20466	0700-1900	DP 19
CRW PVT C-59		9/26	A. Calderon	20	C-59	0700-1900	DP 19
W/T PVT E-20006			M. Humphrey	1	E-20006	0700-1900	DP 19

6. Work Assignments:
 Construct control lines as direct as possible.
 Prepare indirect control line for possible firing operation.
 Improve and hold established control lines.
 Prepare structures for defensive actions.

7. Special Instructions:
 Buckbar Rd. off limits to Water Tenders, alternate route use Pleasant Valley Rd.

REAF A. Speering, P. Yerger
AMB ALS 502, FEMP R. Schmier (12 day), FEMT A. Kirk (12 day)

8. Communications							
Name	Ch	Function	Rx Freq	Rx Tone	Tx Freq	Tx Tone	Notes
COMMAND: Please refer to Communications Plan							
CDF T30	11	TACTICAL	151.3925N	192.8	151.3925N	192.8	
A/G TAC	14	AIR TO GROUND	164.1375N		164.1375N		
CALCORD	15	MEDICAL	156.0750N	156.7	156.0750N	156.7	MEDICAL COORDINATION
GUARD 27	16	EMERGENCY	168.6250N		168.6250N	110.9	EMERGENCY USE ONLY

9. Prepared by: Name:	J. Heald	RESL	24 Hr Shift: 0
	Signature: 		12 Hr Shift: 50
ICS 204	Date/Time: 8/26/2021 2200		Total: 75

ASSIGNMENT LIST (ICS 204 WF)

CONTROLLED UNCLASSIFIED
INFORMATION//BASIC

1. Incident Name: Caldor Incident	2. Operational Period: Date From: 08/27/21 Date To: 08/28/21 Time From: 0700 Time To: 0700	3. Branch Division XXX U / W
4. Operations Personnel:		Page 1 of 1 Uniform

Operations Section Chief: E. Schwab / B. Monday	Night Ops: T. Ernst
Branch Director: N. Hale	Branch Safety: B. Diregolo
Division/Group Supervisor: A. Sigona (12) / F. Burrows (T) (12)	Air Attack: A. Sanchez

5. Resources Assigned:		** Resources Below in Bold are 12 Hour **					
Resource Identifier	ALS	LWD	Leader	Personnel	Request #	Hours	Reporting Location
STC XSU 3225			R. Epperson	18	E-20595	0700-0700	DP-20
ENG BOD 1301		9/2	N. Walker	3	E-202	0700-1900	DP-20
ENG BOD 412		9/2	W. Burks	5	E-204	0700-1900	DP-20
ENG KNF 355		9/6	K. Case	5	E-359	0700-1900	DP-20
ENG PVT E-277			I. Hofstetter	3	E-277	0700-1900	DP-20
ENG PVT E-323			Z. Anthis	3	E-323	0700-1900	DP-20
ENG PVT E-20468			B. Kaltenbach	3	E-20468	0700-1900	DP-20
CRW PVT C-32			K. Parker	20	C-32	0700-1900	DP-20
CRW PVT C-57		9/5	C. Fox	20	C-57	0700-1900	DP-20
DOZ PVT E-32			G. Mobley	2	E-32	0700-1900	DP-20
DOZ PVT E-101			P. Bower	2	E-101	0700-0700	DP-20
DOZ PVT E-20025			N. Edwards	2	E-20025	0700-0700	DP-20
DOZ PVT E-20180			E. Roen	3	E-20180	0700-0700	DP-20
DOZ PVT E-20186			D. Cordrey	2	E-20186	0700-0700	DP-20
W/T PVT E-20005			D. Rempel	1	E-20005	0700-1900	DP-20
W/T PVT E-20016			G. Orduno	3	E-20016	0700-0700	DP-20
W/T PVT E-20283			K. Gunderson	1	E-20283	0700-1900	DP-20
TFLD ABRAMS			S. Abrams	1	O-225	0700-1900	DP-20

6. Work Assignments:
 Construct control lines as direct as possible.
 Prepare indirect control line for possible firing operation.
 Improve and hold established control lines.
 Prepare structures for defensive actions.

7. Special Instructions:
 Buckbar Rd. off limits to Water Tenders, alternate route use Pleasant Valley Rd.

REAF A. Speering, P. Yerger
AMB ALS 502, FEMP R. Schmier (12 day), FEMT A. Kirk (12 day)

8. Communications							
Name	Ch	Function	Rx Freq	Rx Tone	Tx Freq	Tx Tone	Notes
COMMAND: Please refer to Communications Plan							
CDF T27	8	TACTICAL	159.3075N	192.8	159.3075N	192.8	
A/G TAC	14	AIR TO GROUND	164.1375N		164.1375N		
CALCORD	15	MEDICAL	156.0750N	156.7	156.0750N	156.7	MEDICAL COORDINATION
GUARD 27	16	EMERGENCY	168.6250N		168.6250N	110.9	EMERGENCY USE ONLY

9. Prepared by: Name:	J. Heald	RESL	24 Hr Shift: 25
	Signature:		12 Hr Shift: 64
ICS 204	Date/Time: 8/26/2021 2200		Total: 97

ASSIGNMENT LIST (ICS 204 WF)

CONTROLLED UNCLASSIFIED
INFORMATION//BASIC

1. Incident Name:	2. Operational Period:	3. Branch	Division
Caldor Incident	Date From: 08/27/21 Date To: 08/28/21 Time From: 0700 Time To: 0700	El Dorado 1	El Dorado 1
4. Operations Personnel:			Page 1 of 1

Operations Section Chief: E. Schwab / B. Monday	Night Ops: T. Ernst
Branch Director:	Branch Safety: R. Clarke / P. Ryan (12)
Division/Group Supervisor:	Air Attack: A. Sanchez

5. Resources Assigned:	** Resources Below in Bold are 12 Hour **							
Resource Identifier	ALS	LWD	Leader	Personnel	Request #	Hours	Reporting Location	
							ICP	

6. Work Assignments:
 Initial attack fire suppression.
 Prepare for firing operations and implement burn plan.

7. Special Instructions:
 Buckbar Rd. off limits to Water Tenders, alternate route use Pleasant Valley Rd.
 USE COMMUNICATION PLAN FOR GEOGRAPHIC LOCATION.

8. Communications

Name	Ch	Function	Rx Freq	Rx Tone	Tx Freq	Tx Tone	Notes
COMMAND: Please refer to Communications Plan							
A/G TAC	14	AIR TO GROUND	164.1375N		164.1375N		
CALCORD	15	MEDICAL	156.0750N	156.7	156.0750N	156.7	MEDICAL COORDINATION
GUARD 27	16	EMERGENCY	168.6250N		168.6250N	110.9	EMERGENCY USE ONLY

9. Prepared by: Name:	J. Heald	RESL	24 Hr Shift: 0
	Signature:		12 Hr Shift: 0
ICS 204	Date/Time: 8/26/2021 2200		Total: 0

ASSIGNMENT LIST (ICS 204 WF)

CONTROLLED UNCLASSIFIED
INFORMATION//BASIC

1. Incident Name: <p style="text-align: center;">Caldor Incident</p>	2. Operational Period: Date From: 08/27/21 Date To: 08/28/21 Time From: 0700 Time To: 0700	3. Branch Division <p style="text-align: center;">El Dorado 2</p>
---	---	---

4. Operations Personnel:		Page 1 of 1
Operations Section Chief: E. Schwab / B. Monday	Night Ops: T. Ernst	
Branch Director:	Branch Safety: R. Clarke / P. Ryan (12)	
Division/Group Supervisor: T. Thane (12)	Air Attack: A. Sanchez	

5. Resources Assigned:		** Resources Below in Bold are 12 Hour **					
Resource Identifier	ALS	LWD	Leader	Personnel	Request #	Hours	Reporting Location
CRW El Dorado IHC						0700-1900	ICP
CRW Roosevelt IHC			L. Money	20	C-26	0700-1900	ICP
CRW TNF TRUCKEE IHC			S. Burghardt	20	C-49	0700-1900	ICP

6. Work Assignments:
Initial attack fire suppression.
Prepare for firing operations and implement burn plan.

7. Special Instructions:
Buckbar Rd. off limits to Water Tenders, alternate route use Pleasant Valley Rd.
USE COMMUNICATION PLAN FOR GEOGRAPHIC LOCATION.

8. Communications							
Name	Ch	Function	Rx Freq	Rx Tone	Tx Freq	Tx Tone	Notes
COMMAND: Please refer to Communications Plan							
A/G TAC	14	AIR TO GROUND	164.1375N		164.1375N		
CALCORD	15	MEDICAL	156.0750N	156.7	156.0750N	156.7	MEDICAL COORDINATION
GUARD 27	16	EMERGENCY	168.6250N		168.6250N	110.9	EMERGENCY USE ONLY

9. Prepared by: Name:	J. Heald	RESL	24 Hr Shift: 0
	Signature:		12 Hr Shift: 40
ICS 204	Date/Time: 8/26/2021 2200		Total: 40

ASSIGNMENT LIST (ICS 204 WF)

CONTROLLED UNCLASSIFIED
INFORMATION//BASIC

1. Incident Name: Caldor Incident	2. Operational Period: Date From: 08/27/21 Date To: 08/28/21 Time From: 0700 Time To: 0700	3. Branch Staging Fresh Pond
4. Operations Personnel:		Page 1 of 1

Operations Section Chief: E. Schwab / B. Monday	Night Ops: T. Ernst
Branch Director:	Branch Safety:
Division/Group Supervisor: D. Hames (12)	Air Attack: A. Sanchez

5. Resources Assigned:		** Resources Below in Bold are 12 Hour **					
Resource Identifier	ALS	LWD	Leader	Personnel	Request #	Hours	Reporting Location
W/T PVT E-258			A. Joyce	1	E-258	0700-1900	DP 22
W/T PVT E-20680			D. Ginn	1	E-20680	0700-1900	DP 22

6. Work Assignments:
 Monitor command frequencies.
 Maintain 3 minute response time.

7. Special Instructions:
 Buckbar Rd. off limits to Water Tenders, alternate route use Pleasant Valley Rd.
 ICP Staging location: 2350 Carson Rd. Placerville.

8. Communications							
Name	Ch	Function	Rx Freq	Rx Tone	Tx Freq	Tx Tone	Notes
COMMAND: Please refer to Communications Plan							
CALCORD	15	MEDICAL	156.0750N	156.7	156.0750N	156.7	MEDICAL COORDINATION
GUARD 27	16	EMERGENCY	168.6250N		168.6250N	110.9	EMERGENCY USE ONLY

9. Prepared by: Name:	J. Heald Signature:	RESL	24 Hr Shift: 0 12 Hr Shift: 2 Total: 2
ICS 204	Date/Time: 8/26/2021 2200		

AIR OPERATIONS SUMMARY ICS-220

Incident Name / Number Caldor Incident / CA-ENF-024030	Sunrise 6:32	Startup 7:02	Cutoff 19:11	Sunset 19:41	Time Prepared 1830 Shutdown 20:11	Date Prepared Thursday, August 26, 2021 Operational Period - Date Friday August 27, 2021	Prepared By Thomas Smith					
General Remarks, Safety Notes, Hazards, Air Operations Special Equipment, etc. TRACK ALL DIPSITE LOCATIONS / NUMBER OF DIPS / GALLONS TAKEN. TRACK ALL DROP LOCATIONS / NUMBER OF DROPS / GALLONS DROPPED ALL GPS DATA TO BE COLLECTED IN DEGREES, MINUTES, DECIMAL MINUTES FORMAT. <i>AVOID Aerial Application of Retardant / Foam / Agent within 300' of Waterways, Bodies of Water, etc. If Retardant / Foam / Agent is Dropped Within These Areas Immediately Notify the AOB/D and Provide the Following Information: Lat / Long, Estimated Number of Gallons and a Map Detailing The Area.</i>												
Frequencies CMD 105 AIR / GROUND - TACTICAL NORTH ROTOR VIC SOUTH ROTOR VIC AIR / GROUND - COMMAND AIR TACTICS AIR/AIR BRIEFING TFR TOLC DECK PVF DECK KRK CALCORD - MEDICAL AIRGUARD - Emergency Only	RX 172.4500 164.1375 121.0250 124.0750 167.9500 163.3375 126.3750 118.6250 123.7250 163.1000 168.3500 156.0750 168.6250	Tone 114.8 (T11) 156.7 (6) 110.9 (1)	TX 166.9375 164.1375 121.0250 124.0750 167.9500 163.3375 126.3750 118.6250 123.7250 163.1000 168.3500 156.0750 168.6250	AM / FM FM FM AM AM FM FM AM AM FM FM FM FM	Position AOB/D AOB/D D ASGS ASGS HEBM (PVF) HEBM (KRK) HEBM HLCO HLCO UR31 ATGS ATGS	Name G-Inwood T. Smith F. Abril P. Michael R. Johnson R. Sundstrom M. Lynde J. Tully C. Mariano A. Ihle	Phone 209-694-6333 530-308-1970 951-757-5487 916-221-2071 530-340-3099 530-575-0368 530-941-4600 805-903-3408 530-913-7789 805-364-1002					
HELICOPTERS (Use page 2 if Needed)												
FAA # 1048Y 3173U 722HT 133TH 948CH 473CH GUARD 862 GUARD 863 GUARD 823 GUARD 865 GUARD 866 669RH	Type I I I I I I I I I I I	Make/Model S-61 S-61 CH-54 UH-60 CH-47 CH-47 UH-60 UH-60 UH-60 CH-47 KAMAN 1200	Helibase PVF PVF PVF PVF PVF MHR MHR MHR MHR MHR KRK	Avail 0800 0800 0800 0800 0800 0800 1100 1100 1100 1100 0800	Start 0800 0800 0800 0800 0800 0800 1100 1100 1100 1100 0800	Remarks TANK TANK TANK LONG BUCKET BUCKET BUCKET BUCKET BUCKET BUCKET BUCKET LONG	Type II II II II II II III III III III II	FAA # 516 205PT 2DH 205TA 110NW 117DR 11NE 910BR 237BS 14HX 509	Base PVF PVF PVF PVF PVF PVF PVF PVF KRK PVF	Avail 0800 0800 0800 0800 0800 0800 0800 0800 0800 0800	Start 0800 0800 0800 0800 0800 0800 0800 0800 0800 0800	Remarks LONG LONG LONG LONG LONG BUCKET BUCKET LONG RECONBUCKET RECONBUCKET RECONBUCKET RECON/INTEL
FIXED WING (Use Page 2 if Needed)												
FAA # AA07 TBD	Type 	Make/Model AC690	Base MCC	Avail 0800 0800	Start 0800 0800	Remarks ATGS ATGS	Type 	FAA # 	Base 	Avail 	Start 	Remarks

MEDICAL PLAN (ICS 206)

1. Incident Name: Caldor	2. Operational Period:	Date From:	8/27/21	Date To:	8/28/21
		Time From:	700	Time To:	700

3. Medical Aid Stations:			
Name	Location	Contact Number/Freq	Physician
CAL MAT	ICP		Yes
MERT	Growlersburg Camp		Yes

4. Transportation (indicate air or ground):			
Ambulance Service	Location	Contact Number	Level of Service
Guard 840 24 Hr (AIR)	Reno-Tahoe INTL Airport (KRNO)	Caldor Comm	ALS
Private Ambulances (GROUND)	All Branches	Caldor Comm	ALS
REMS 18	All Branches	Caldor Comm	ALS

5. Hospitals:							
Hospital Name	Address,	Contact Number(s)/ Frequency	Travel Time		Trauma Center	Burn Center	Helipad
	Lat & Long Helipad		Air	Ground			
Marshal Medical Center	1100 Marshal Way, Placerville	530-622-1441	5 Min	10 Min	Level 3	<input type="checkbox"/>	<input type="checkbox"/>
Sutter Amador Hospital	200 Mission Blvd, Jackson Lat 38° 21.05'N Long 120° 45.85'W	209-223-7500	30 Min	1.5 Hrs	Level 4	<input type="checkbox"/>	<input checked="" type="checkbox"/>
Sutter Roseville	1 Medical Plaza Dr. Roseville Lat 38° 45.97'N Long 121° 14.87' W	916-781-1200	45 Min	3 Hrs	Level 2	<input type="checkbox"/>	<input checked="" type="checkbox"/>
Barton Memorial	2170 South Ave. So Lake Tahoe Lat 38° 54.67'N Long 119° 59.80' W	530-541-3420	40 Min	1.5 Hrs	Level 3	<input type="checkbox"/>	<input checked="" type="checkbox"/>
UC Davis Medical Center	2315 Stockton Blvd. Sacramento Lat 38° 33.28'N Long 121° 27.35'W	916-734-5669	55 Min	1.5 Hrs	Level 1	<input checked="" type="checkbox"/>	<input checked="" type="checkbox"/>

<p>6. Special Medical Emergency Procedures</p> <p>Line Emergency Crew Supervisor will contact Division Supervisor with patient complaint/condition and location.</p> <ul style="list-style-type: none"> - Division Group Supervisor Contacts: <ol style="list-style-type: none"> 1. Closest EMS resource 2. Caldor Communications - Communications Unit Contacts: <ol style="list-style-type: none"> 1. Ground or Air ambulance as requested. 2. Operations 3. Safety - Division Supervisor or designee will serve as point of contact and run medical emergency on assigned channel. <ol style="list-style-type: none"> 1. A pre-assigned tactical frequency (i.e. CALCORD) should be used for IWI and only for duration of the emergency. - Communications Unit will clear the Command channel for emergency traffic as needed for duration of the need. - Medical Unit contacts <ol style="list-style-type: none"> 1. Communications 2. Operations 3. Crew Supervisor 	<p>Injury Reporting Procedures</p> <p>Nature of Injury: _____</p> <p>Location of Patient: _____</p> <p>Point of Contact: _____</p> <p>Transportation Requested by: Air _____ Ground _____</p> <p>Point of Pick-Up: _____</p> <p style="padding-left: 40px;">Lat: _____ Long: _____</p> <p>Patient Unit ID: _____</p> <p>Is an EMT with Patient: Yes _____ No _____</p> <p>Age: _____ Sex: Male _____ Female _____</p> <p>ALL EMERGENCIES---Secure the area and identify witnesses for later investigation. Keep an accurate log of events.</p> <p>**IN CAMP EMERGENCY**</p> <p>Contact Caldor Communications</p>
--	---

Check box if aviation assets are utilized for rescue. If assets are used, coordinate with Air Operations.

7. Prepared by:	J.Segura	Signature:
8. Approved by:	J.Novak	Signature:


ICS 206	NIMS IAP	Date/Time:	8/26/2021 1900
---------	----------	------------	----------------

ICS 205 - INCIDENT RADIO COMMUNICATIONS PLAN

1. Incident Name: Caldor Incident BRANCHES 1 / 15 / 20:CALDOR Z1		2. Date/Time Prepared Date: 08/26/2021 Time: 1600		3. Operational Period: Date To: 08/28/21 Time To: 0700	
---	--	--	--	---	--


4. Communications								
Ch#	Function	Name	Assigned To	Rx Freq	Rx Tone	Tx Freq	Tx Tone	Notes
1	COMMAND	CMD 105	ALL BRANCHES	172.4500N	114.8	166.9375N	114.8	SACRAMENTO PEAK
2	COMMAND	CMD 109	ALL BRANCHES	170.3875N	114.8	162.1750N	114.8	BIG HILL
3	COMMAND	CMD 104	ALL BRANCHES	170.7625N	114.8	165.6250N	114.8	NORTH OF HWY 50 BETWEEN DP 21 AND DP 24
4	COMMAND	CMD 1	ALL BRANCHES	170.9750N	114.8	168.7000N	114.8	LEEK SPRINGS
5	COMMAND	CMD 11	ALL BRANCHES	170.6875N	114.8	166.575N	114.8	GRIZZLY FLATS AREA
6	COMMAND	CMD 113	ALL BRANCHES	170.3125N	114.8	165.6750N	114.8	KIRKWOOD MOUNTAIN
7	COMMAND	CMD 116	ALL BRANCHES	171.0375N	114.8	162.5875N	114.8	SCOUT PEAK
8	TACTICAL	NIFC T1	DIV N	168.0500N		168.0500N		
9	TACTICAL	NIFC T6	DIV D / DIV L	166.7750N		166.7750N		
10	TACTICAL	NIFC T3	DIV F / DIV J	168.6000N		168.6000N		
11	TACTICAL	NIFC T7	DIV P / DIV R	168.2500N		168.2500N		
12	TACTICAL	CDF T26	DIV A	159.2925N	192.8	159.2925N	192.8	
13	A/G CMD	A/G CMD	ALL BRANCHES	167.9500N		167.9500N		
14	AIR TO GROUND	A/G TAC	ALL BRANCHES	164.1375N		164.1375N		
15	MEDICAL	CALCORD	ALL BRANCHES	156.0750N	156.7	156.0750N	156.7	MEDICAL COORDINATION
16	EMERGENCY	GUARD 27	ALL BRANCHES	168.6250N		168.6250N	110.9	EMERGENCY USE ONLY
17								
18								
19								
20	EMERGENCY	GUARD 27	ALL BRANCHES	168.6250N		168.6250N	110.9	EMERGENCY USE ONLY

5. Special Instructions
 TO CONFIRM YOU HAVE THE MOST CURRENT CLONE, ENSURE YOUR DISPLAY OF CHANNEL 16 OR 20 MATCHES CHANNEL 16 OR 20 OF THE 205 - HEIGHT AND POWER ARE KEY WHEN USING RADIOS; BE AT A HIGH POINT, USE A MOBILE IF POSSIBLE, AND USE RADIO RELAYS WHEN NEEDED

6. Prepared by (Communications Unit Leader): Name: J. BROOKS COML		Signature: 
ICS 205 - CONTROLLED UNCLASSIFIED INFORMATION//BASIC		Date/Time: 08/26/21 1600


ICS 205 - INCIDENT RADIO COMMUNICATIONS PLAN

CONTROLLED UNCLASSIFIED
INFORMATION//BASIC

1. Incident Name: Caldor Incident BRANCHES 10 / 30:CALDOR Z2		2. Date/Time Prepared Date: 08/26/2021 Time: 1600		3. Operational Period: Date From: 08/27/21 Time From: 0700 Date To: 08/28/21 Time To: 0700				
4. Communications								
Ch#	Function	Name	Assigned To	Rx Freq	Rx Tone	Tx Freq	Tx Tone	Notes
1	COMMAND	CMD 105	ALL BRANCHES	172.4500N	114.8	166.9375N	114.8	SACRAMENTO PEAK
2	COMMAND	CMD 109	ALL BRANCHES	170.3875N	114.8	162.1750N	114.8	BIG HILL
3	COMMAND	CMD 104	ALL BRANCHES	170.7625N	114.8	165.6250N	114.8	NORTH OF HWY 50 BETWEEN DP 21 AND DP 24
4	COMMAND	CMD 1	ALL BRANCHES	170.9750N	114.8	168.7000N	114.8	LEEK SPRINGS
5	COMMAND	CMD 11	ALL BRANCHES	170.6875N	114.8	166.575N	114.8	GRIZZLY FLATS AREA
6	COMMAND	CMD 113	ALL BRANCHES	170.3125N	114.8	165.6750N	114.8	KIRKWOOD MOUNTAIN
7	COMMAND	CMD 116	ALL BRANCHES	171.0375N	114.8	162.5875N	114.8	SCOUT PEAK
8	TACTICAL	CDF T27	DIV G / DIV U/W	159.3075N	192.8	159.3075N	192.8	
9	TACTICAL	CDF T28	DIV H	151.1825N	192.8	151.1825N	192.8	
10	EMERGENCY	CDF T29	DIV I	151.3475N	192.8	151.3475N	192.8	
11	TACTICAL	CDF T30	DIV T	151.3925N	192.8	151.3925N	192.8	
12								
13	A/G CMD	A/G CMD	ALL BRANCHES	167.9500N		167.9500N		
14	AIR TO GROUND	A/G TAC	ALL BRANCHES	164.1375N		164.1375N		
15	MEDICAL	CALCORD	ALL BRANCHES	156.0750N	156.7	156.0750N	156.7	MEDICAL COORDINATION
16	EMERGENCY	GUARD 27	ALL BRANCHES	168.6250N		168.6250N	110.9	EMERGENCY USE ONLY
17								
18								
19								
20	EMERGENCY	GUARD 27	ALL BRANCHES	168.6250N		168.6250N	110.9	EMERGENCY USE ONLY
5. Special Instructions								
TO CONFIRM YOU HAVE THE MOST CURRENT CLONE, ENSURE YOUR DISPLAY OF CHANNEL 16 OR 20 MATCHES CHANNEL 16 OR 20 OF THE 205 - HEIGHT AND POWER ARE KEY WHEN USING RADIOS; BE AT A HIGH POINT, USE A MOBILE IF POSSIBLE, AND USE RADIO RELAYS WHEN NEEDED								
6. Prepared by (Communications Unit Leader): Name: J. BROOKS COML			Signature: 					
ICS 205 - CONTROLLED UNCLASSIFIED INFORMATION//BASIC			Date/Time: 08/26/21 1600					

ICS 205 - INCIDENT RADIO COMMUNICATIONS PLAN

CONTROLLED UNCLASSIFIED
INFORMATION//BASIC

1. Incident Name: AEU / ENF INITIAL ATTACK ONLY		2. Date/Time Prepared Date: 08/26/2021 Time: 1600		3. Operational Period: Date To: 08/28/21 Time To: 0700				
4. Communications								
Ch#	Function	Name	Assigned To	Rx Freq	Rx Tone	Tx Freq	Tx Tone	Notes
1	COMMAND	ENFADM 1		172.3250N	156.7	165.2250N	110.9	FOREST ADMIN Tone 1-Alder
2	COMMAND	ENFADM 2		172.3250N	156.7	165.2250N	123.0	FOREST ADMIN Tone 2-Leek Springs
3	COMMAND	ENFADM 4		172.3250N	156.7	165.2250N	136.5	FOREST ADMIN Tone 4-Big Hill
4	COMMAND	ENFADM 6		172.3250N	156.7	165.2250N	156.7	FOREST ADMIN Tone 6-Echo Summit
5	COMMAND	XAM CT10		154.7625N	123.0	159.1800N	107.2	AMADOR CMD Tone 10-Leek Springs
6	COMMAND	XAM CT11		154.7625N	123.0	159.1800N	114.8	AMADOR CMD Tone 11-Zion Mountain
7	COMMAND	XED CT11		155.9025N	186.2	159.2775N	114.8	EL DORADO CMD Tone 11-Union
8	COMMAND	XED CT1		155.9025N	186.2	159.2775N	110.9	EL DORADO CMD Tone 1-Alder
9	COMMAND	XED CT4		155.9025N	186.2	159.2775N	136.5	EL DORADO CMD Tone 4-Big Hill
10	TACTICAL	R5 T4		166.5500N		166.5500N		REGION 5 TAC 4
11	TACTICAL	R5 T5		167.1125N		167.1125N		REGION 5 TAC 5
12	TACTICAL	R5 T6		168.2375N	192.8	168.2375N		REGION 5 TAC 6
13	TACTICAL	CDF T2		151.1600N	192.8	151.1600N	192.8	
14	TACTICAL	CDF T8		151.3700N	192.8	151.3700N	192.8	
15	AIR TO GROUND	A/G TAC	AIR TO GROUND	164.1375N		164.1375N		
16	EMERGENCY	GUARD	EMERGENCY	168.6250N		168.6250N	110.9	EMERGENCY USE ONLY
17								
18								
19								
20	EMERGENCY	GUARD	EMERGENCY	168.6250N		168.6250N	110.9	EMERGENCY USE ONLY
5. Special Instructions								
TO CONFIRM YOU HAVE THE MOST CURRENT CLONE, ENSURE YOUR DISPLAY OF CHANNEL 16 OR 20 MATCHES CHANNEL 16 OR 20 OF THE 205 - HEIGHT AND POWER ARE KEY WHEN USING RADIOS; BE AT A HIGH POINT, USE A MOBILE IF POSSIBLE, AND USE RADIO RELAYS WHEN NEEDED								
6. Prepared by (Communications Unit Leader): Name: J. BROOKS COML			Signature: 					
ICS 205 - CONTROLLED UNCLASSIFIED INFORMATION//BASIC			Date/Time: 08/26/21 1830					



Caldor Ground Support

Location

2441 Headington Road
Placerville, CA 95667

Fuel Locations

Card Lock

Dawson Oil Company
321 Pleasant Valley Rd
Diamond Springs, CA 95619

Line Locations (DIESEL ONLY)

Drop Point 21

13200 Hwy 50
Kyburz, CA 95720

Indian Diggins School

6020 Omo Ranch Rd
Somerset, CA 95684

Contacts

GSUL- Jeremy Christofferson (951) 287-0886

GSUL(T)- Jason Truelock- (209) 419-3678

EQPM- Fidel Fernandez (909) 520-1770

Repairs- FEM Scott Hogan (530) 708-2730

Transportation- Bob Johnson (530) 360-6313

Additional Addresses

El Dorado Shop
5660 Mother Lode Dr
Placerville, CA 95667



DEMOBILIZATION PLAN - SUMMARY CALDOR FIRE INCIDENT CA-ENF-024030

GENERAL INFORMATION

The Demobilization Plan is developed to facilitate the orderly removal and checkout of resources on the incident. By definition, surplus personnel are available for release if they have rested for a minimum of 8 hours, are cleaned up, outfitted and have a vehicle ready to depart to their next destination.

GENERAL GUIDELINES

- **NO RESOURCES WILL LEAVE THE INCIDENT UNTIL AUTHORIZED TO DO SO BY THE DEMOB UNIT.**
- Efforts will be made to ensure that all released personnel arrive at their destination prior to 2200 hours.
- All Resources will arrive at the Demobilizations Unit at their scheduled time Only.
- All government and hired vehicles leaving the incident will have a safety inspection. If a vehicle is within 1,000 miles of a "B" service, it is the responsibility of the resource to contact Ground Support and have an oil change prior to their scheduled demobilization time.
- **All Rental Vehicles will receive a safety inspection prior to leaving the incident.**
- All trainees are to keep their time up to date and report to the Training Specialist with their task books and evaluations prior to completion of the demobilization process.
- All strike team leaders are responsible to call **North Ops at 1-530-224-2466** immediately upon being released from the incident

RESPONSIBILITIES

Unit Leaders will declare resources excess to their **Section Chief**. **Section Chiefs** will declare excess resources to the Planning Section Chief through the **Resource Unit Leader**. This should be done 36 hours in advance of anticipated release. Use the **Declaration of Excess Resources sheet or General Message Form (ICS-213)** to list all **excess resources**. Include the resource name, request number, name of person, date and time of declared excess, and time in which the resource will be eligible to leave. Send to the **RESOURCE UNIT** where the resource will be determined to be surplus to the incident. Surplus resources will then be able to report to the **DEMOB UNIT**, receive a Demobilization Checkout Form (ICS 221), get the appropriate ICS 221 signatures, and then return the completed ICS 221 to the DEMOB UNIT prior to final release or reassignment. Resources are not to contact **South Ops** or the expanded dispatch center unless instructed to do so by the Demobilization Unit.

RELEASE PRIORITIES

1. Organized fire departments
2. OES engines
3. Hired personnel and equipment
4. Other agencies (USFS, BLM, etc.)
5. Out of region CAL FIRE forces
6. Within Region CAL FIRE Forces
7. Unit CAL FIRE Forces

TRAVEL INFORMATION

All resources will meet agency specific requirements on hours of travel per day. For CAL FIRE hand crews, a full 24 hour reset period shall be adhered to before departing from the incident. After a crew's last operational period they shall begin the demobilization release procedure during their 24 hour off shift. In addition, they must use the following complete 24 hour period as reset time before they depart from the incident.



FINANCE MESSAGE

FEDERAL RESOURCES

- Refer to Caldor Federal Finance Procedures

CAL FIRE TIME UNIT (Personnel and Hired Equipment)

- **CAL FIRE PERSONNEL** – Ensure you have started your eFC-33's and update after each shift. Please make sure Epay schedules are up to date.
- **HIRED EQUIPMENT SUPPLIERS** – Check-in with the TIME Unit and drop off your agreements.

DIVISION / GROUP - LINE SUPERVISORS

- Please turn in hired equipment shift tickets at the end of each shift.
- **SHIFT TICKET BOOKS** – Available in the TIME Unit for agency line supervisors only.

COMP / CLAIMS

- **Damage Claims (suppression, property, vehicle)**
 - ICS-213. We will need location, description of damages, and your contact information.

CALDOR FEDERAL FINANCE PROCEDURES



Finance Email: 2021.caldor.finance@firenet.gov

Finance Hotline: 530-330-5450

Directions for emailing Documents:

<p style="text-align: center;">Federal Contract Resources</p> <p>Send To: 2021.caldor.finance@firenet.gov SUBJECT: Include Key Word: <i>Equipment</i></p>	<p style="text-align: center;">Federal Overhead and Crews</p> <p>Send To: 2021.caldor.finance@firenet.gov SUBJECT: Include Key Word: <i>Time</i></p>
---	--

DOCUMENTS TO EMAIL TO FINANCE

	<p>Federal Overhead and Crews</p>	<p>Regular Government Personnel & ADs attachments: @Check-In: Crew Manifests, MOUs, or Cooperative Agreement (if applies), AD Casual Hire Sheet/RO Daily: Crew Time Report (CTR), Shift Ticket (<i>when applies</i>), receipts (fuel issues, travel receipts, etc.) @Demob: Signed OF288, Final Equipment Use Invoice</p>
	<p>Federal Contract Resources</p>	<p>Private: Contractor Attachments: @Check-In: Resource Order, Full Contract/Agreement, Certifications <i>(if required)</i>, Pre-Inspection Daily: SHIFT Tickets, receipts (fuel issues, claims, etc.) @Demob: Contractor Evaluations, Final Shift Tickets and receipt for Addition/Deductions, Post-Inspection, Final Signed Invoices</p>

FEDERAL FINANCE DEMOB PROCEDURES

All Resources will be sent their **DRAFT OF-288/OF-286's** via the Finance email. 12 hours will be provided to allow the resource to review their document and reply back to Finance with the statement "No Corrections Necessary" or a description of any issues. After Finance receives the email, any discrepancies will be resolved. Next, the resource is sent the **FINAL DOCUMENT** for signature. They will then email the signed document back to Finance, if able. Finance will then sign the **FINAL DOCUMENT** and email it back to the resource. This completes the process.

SHIFT TICKET EXAMPLE

EMERGENCY SHIFT TICKET and EVALUATION FORM					Contractor Name						
Incident or Project Name CALDOR		Incident Number CAENF024030	Request Number E#		Operator #1 BOB SMITH	Operator #2 TOM SMITH					
Agreement Number XXX - 000000 - 00					Operator Furnished By: <input checked="" type="checkbox"/> Contractor <input type="checkbox"/> Government						
Equipment Make CAT		Equipment Model / Type D6XM			Operating Supplies Furnished By: <input checked="" type="checkbox"/> Contractor <input type="checkbox"/> Government						
Serial Number 111111		Licence Number 111111			Equipment Status <input checked="" type="checkbox"/> Inspected <input checked="" type="checkbox"/> Under Agreement <input type="checkbox"/> Released by Government <input type="checkbox"/> Withdrawn by Contractor						
Equipment Use (Circle) Hours Days / Miles					Remarks/Comments ** NO DAMAGE/ NO CLAIMS						
Date Mo / Day	Start	Stop	Work	Assignment							
8/18	0700	2400	17	DIV M							
8/19	0001	0700	7	DIV M							
Vendor Rating					Govt. Rep. Name and Position - PRINT Mike Weber						
<table border="1"> <tr> <td>Poor*</td> <td>Avg.</td> <td>Good</td> <td>Exc.</td> <td>N/A</td> </tr> </table>					Poor*	Avg.	Good	Exc.	N/A	Govt. Rep. Signature <i>Mike Weber</i>	
Poor*	Avg.	Good	Exc.	N/A							
Met Performance Expectations					Contractor Signature <i>Bob Smith</i>						
Equipment in Safe Working Condition					Date 07/13/21						
Operator Skill Level					Time 0800						
Operates Safely					Date 07/13/21						
Operator's Cooperation Level					Time 0800						
Overall Performance					<p>* NOTE: Any rating of POOR requires an explanation in Comment Section. **Final evaluation or for more documentation, use an ICS Form 230 or equivalent.</p>						
<p>Pink - Finance Blue - Home Unit HE Coordinator Yellow - Vendor White - Govt Representative</p>					CALFIRE 297 (Rev 3-2011)						

EMERGENCY SHIFT TICKET and EVALUATION FORM					Contractor Name						
The responsible Government Officer will complete this form each shift					DUDE TRANSPORT						
Incident or Project Name CALDOR		Incident Number CAENF024030	Request Number E # Here		Operator #1 BOB SMITH	Operator #2 TOM SMITH					
Agreement Number XXX - 000000 - 00					Operator Furnished By: <input checked="" type="checkbox"/> Contractor <input type="checkbox"/> Government						
Equipment Make TRANSPORT/ KENWORTH		Equipment Model / Type COZAD TRAILER /26 WHEELS			Operating Supplies Furnished By: <input checked="" type="checkbox"/> Contractor <input type="checkbox"/> Government						
Serial Number 1XP3ESMP14239012		Licence Number 9999999			Equipment Status <input checked="" type="checkbox"/> Inspected <input checked="" type="checkbox"/> Under Agreement <input type="checkbox"/> Released by Government <input type="checkbox"/> Withdrawn by Contractor						
Equipment Use (Circle) Hours Days / Miles					Remarks/Comments ** NO DAMAGE/ NO CLAIMS						
Date Mo / Day	Start	Stop	Work	Assignment							
8/18	0700	2400	17	DIV M							
8/19	0001	0700	7	DIV M							
Vendor Rating					Govt. Rep. Name and Position - PRINT Mike Weber						
<table border="1"> <tr> <td>Poor*</td> <td>Avg.</td> <td>Good</td> <td>Exc.</td> <td>N/A</td> </tr> </table>					Poor*	Avg.	Good	Exc.	N/A	Govt. Rep. Signature <i>Mike Weber</i>	
Poor*	Avg.	Good	Exc.	N/A							
Met Performance Expectations					Contractor Signature <i>Bob Smith</i>						
Equipment in Safe Working Condition					Date 07/13/21						
Operator Skill Level					Time 0800						
Operates Safely					Date 07/13/21						
Operator's Cooperation Level					Time 0800						
Overall Performance					<p>* NOTE: Any rating of POOR requires an explanation in Comment Section. **Final evaluation or for more documentation, use an ICS Form 230 or equivalent.</p>						
<p>Pink - Finance Blue - Home Unit HE Coordinator Yellow - Vendor White - Govt Representative</p>					CALFIRE 297 (Rev 3-2011)						

Turn shift tickets into Time Unit.



CAL FIRE STRIKE TEAM WORKSHEET



INCIDENT NAME:	
INCIDENT #:	
STRIKE TEAM ID:	

COMMIT DATE:	
COMMIT TIME:	

REQUEST #	STRIKE TEAM LEADER NAME	CLASSIFICATION	CELL #	DUTY DAYS	HOME STATION
EQUIP #					
ID X #.					

REQUEST #	PERSONNEL NAMES	CLASSIFICATION	CELL #	DUTY DAYS	HOME STATION
EQUIP #					
ID X #.					

DOZER/CHAIN SAW HOURS:	DATE:	HRS:	DATE:	HRS:	DATE:	HRS:	DATE:	HRS:
-------------------------------	-------	------	-------	------	-------	------	-------	------

REQUEST #	PERSONNEL NAMES	POSITION	CELL #	DUTY DAYS	HOME STATION
EQUIP #					
ID X #.					

DOZER/CHAIN SAW HOURS:	DATE:	HRS:	DATE:	HRS:	DATE:	HRS:	DATE:	HRS:
-------------------------------	-------	------	-------	------	-------	------	-------	------

REQUEST #	PERSONNEL NAMES	POSITION	CELL #	DUTY DAYS	HOME STATION
EQUIP #					
ID X #.					

DOZER/CHAIN SAW HOURS:	DATE:	HRS:	DATE:	HRS:	DATE:	HRS:	DATE:	HRS:
-------------------------------	-------	------	-------	------	-------	------	-------	------

REQUEST #	PERSONNEL NAMES	POSITION	CELL #	DUTY DAYS	HOME STATION
EQUIP #					
ID X #.					

DOZER/CHAIN SAW HOURS:	DATE:	HRS:	DATE:	HRS:	DATE:	HRS:	DATE:	HRS:
-------------------------------	-------	------	-------	------	-------	------	-------	------

REQUEST #	PERSONNEL NAMES	POSITION	CELL #	DUTY DAYS	HOME STATION
EQUIP #					
ID X #.					

DOZER/CHAIN SAW HOURS:	DATE:	HRS:	DATE:	HRS:	DATE:	HRS:	DATE:	HRS:
-------------------------------	-------	------	-------	------	-------	------	-------	------

DEMOB

RETURN DATE: _____

RETURN TIME: _____

NOTE: This form must not be used to certify lost, stolen or worn out property. A STD 152 Property Survey Report must be completed.

	DOC. NUMBER:
--	--------------

LOCATION / INCIDENT NAME:	INCIDENT NUMBER:	UNIT:	REGION:	DATE:
THE FOLLOWING ARTICLES WERE: (broken, left on line, damaged, or other)				DATE OF OCCURRENCE:

QUANTITY	UNIT OF MEAS.	CAL FIRE STOCK NUMBER <small>(COMPLETE WHENEVER ASSIGNED)</small>	DESCRIPTION <small>(INDICATE SIZE, MAKE, MODEL, TYPE, ETC., TO CLEARLY DESCRIBE THE ITEM, PROVIDE ADEQUATE DATA TO EFFECTIVELY IDENTIFY EQUIPMENT OR PROPERTY.)</small>	PROPERTY NUMBER

LOCATION OF ITEMS:

REMARKS:

SIGNATURE OF PERSON CERTIFYING OCCURRENCE AS DESCRIBED			
SIGNATURE:	PRINTED NAME:	TITLE:	DATE:

UNIT SUPERVISOR'S APPROVAL

COMMENTS:

SIGNATURE OF UNIT ADMINISTRATOR:	TITLE:	DATE:
----------------------------------	--------	-------



INCIDENT PEER SUPPORT:



Team members are available on the incident for any peer support related needs. The best way to get a hold of them is to call them directly or stop by the ESS Trailer

In addition, there is an onsite clinician available to meet on an individual and/or group basis

Jeremy Sanders 916-281-6472

John Kiszka 530-448-2402

or

CAL FIRE 24 Hr. Peer Support/Helpline

916-445-4337

Below are other Team Members not on the incident who can also be contacted directly:

Tony Howard 916-224-1543

Mike Aiello 916-584-0548

Warren Parrish 916-823-6641

Nikole Schutz 916-709-0434

Amber Henderson 805-794-1690

Amy Head 916-956-3277

Chris Lomanto 916-247-6974

Connie Quarisa 916-213-8697

Noelle Bahnmler 916-661-0011

Krissy Shaefer 619-592-6337

Shawna Powell 530-717-0667

Mike Deleo 916-661-0724

Watch for the signs and symptoms of stress in yourself and the people around you. Try and stay positive and get much needed rest when you can. We can do this, together!

A message to our firefighters from **ASHLEY IVERSON**.



Stay Healthy, Stay Alert and Stay Strong!



PUBLIC INFORMATION



Official Sources of Public Information

Incident Information Line: (530)303-2455

Incident Media Line: (530)497-0315

Incident Website: www.fire.ca.gov/incidents

Email List Sign Up: <https://tinyurl.com/bbhw2cm5>



@CALFIREAEU
@EldoradoNF



@CALFIRE_AEU



Caldor Fire Information



@CALFIREAEU
@EldoradoNF

STATUS	
Incident Start Date: August 14, 2021	Total Personnel
Acreage:	Containment:

Media Law

The California State Penal Code Section 409.5(d) allows the news media to enter scenes of disaster, riot, or civil disturbance. Properly identified members of the news media should not be restricted from entering locations specified within the code. However, this does not include crime scenes, and does not imply that the news media may interfere with incident operations while they are in the areas of concern. If entering such a location that is hazardous, they should be advised; media access cannot be prevented for safety reasons unless their presence would impede CAL FIRE's mitigation of the incident or the disturbing of evidence. When working around the media, remember:

- Media **is not permitted** on private property without the property owners permission.
- If approached and questioned by the media and or the public, talk about your assignment or task at hand. Remember to wear all the appropriate PPE.
- If needed call for an incident PIO through the chain of command.
- Never speculate, give opinions or speak for others.
- There is no such thing as an "off the record" comment.

CAL FIRE Social Media Policy (Social Media 0691)

Social Media is increasingly being used by public agencies, the media as well as the public. This form of communication continues to grow rapidly in order to supply the instant gratification needs of society. Therefore when on a CAL FIRE incident you will adhere to the CAL FIRE Social Media Policy, 0691. You can get further information about the CAL FIRE Social Media Policy from the incident Public Information Officer. While assigned to the incident, there will be no posting of:

- Inappropriate information or materials, no opinions, no endorsements, inappropriate pictures or videos

Lost and Found

The Information Section will manage Lost and Found items for the incident. If you have lost an item leave your contact information and what you have lost at the Information Section. If you have found an item on the incident bring the item to the Information Section with your contact information as well.

Incident Base Camp Mailing Address

c/o Public Information Office/Trailer
102 Placerville Dr.
Placerville, CA 95667



WATER USAGE LOG

DATE: _____

Division / Group: _____

AGENCY ID / VENDOR: _____

I.e.. Strike Team 1110C, Acme Water Tenders

REQUEST # _____

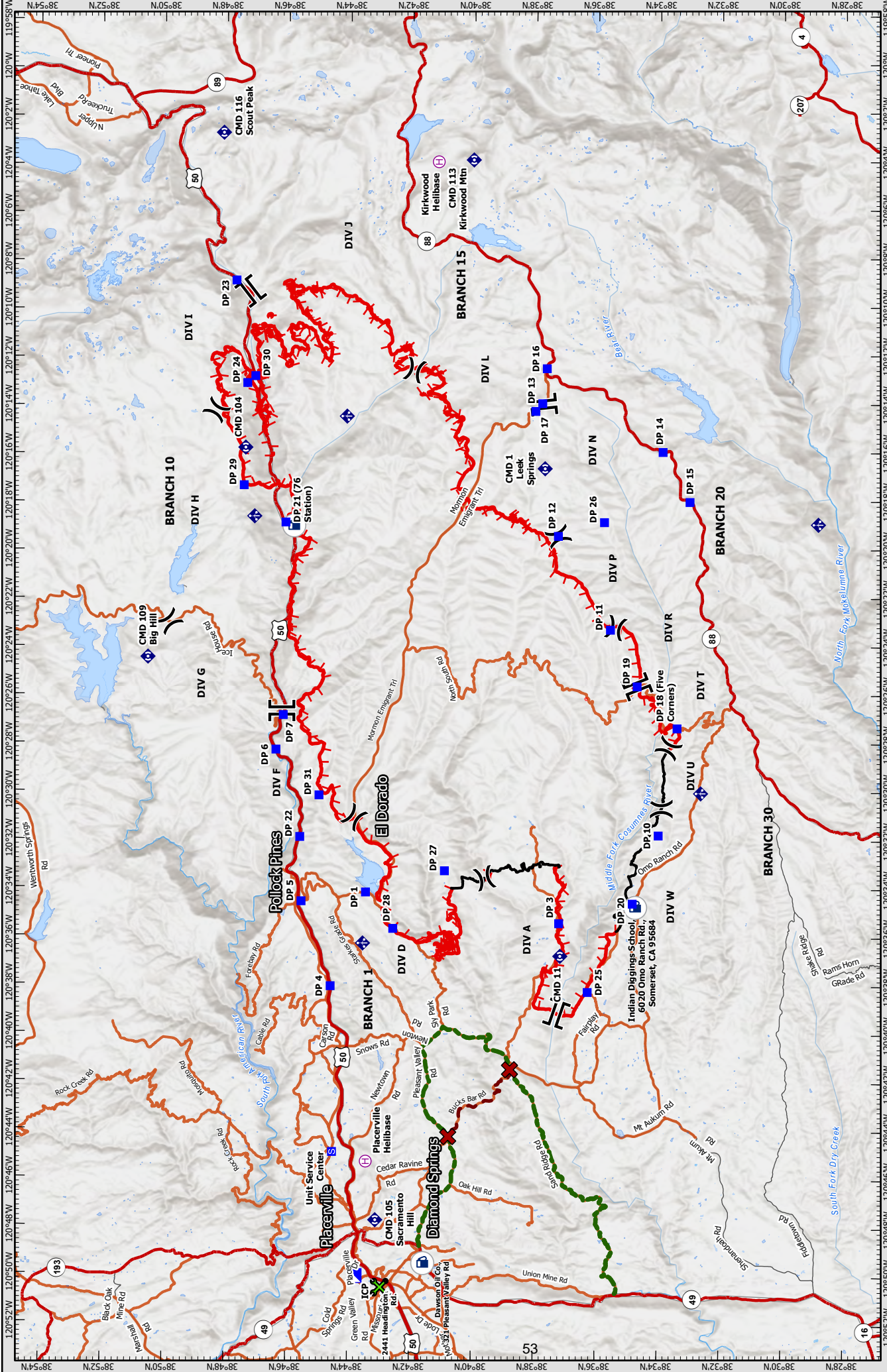
WATER SOURCE LOCATION	Hydrant	Open source i.e. pond	Tank	Gallons Used	Property Owner


****Please note if you made contact with property owner and their contact.
(Use reverse side if needed.)**


Owner Information: _____

Turn in to Comp/Claims Daily

The intent of this document is intended to track, record and validate the amount of water used on a incident. It's not intended to review the performance of equipment using the water on an incident.







TRANSPORTATION MAP

Caldor Incident

CA-ENF-024030



Datum: NAD 83 1:300,000



Legend:

- Repeater
- Helibase
- Off-Site Fuel
- Ground Support
- DO NOT TRAVEL
- Bucks Bar Rd
- Water Tender Alt Route
- Fire Engine
- Division Break
- Branch Break
- Incident Command Post
- Drop Point
- Staging Area
- Mobile Weather Unit
- Contained Line
- Highways
- Major Routes
- Major Roads

DISCLAIMER: The displayed incident data is approximate and should only be used for planning purposes. The displayed map data is approximate and should only be used for planning purposes. The displayed map data is approximate and should only be used for planning purposes. The displayed map data is approximate and should only be used for planning purposes.



DOZER PARKING
Caldor Incident
CA-ENF-024030
August 27, 2021

Directions

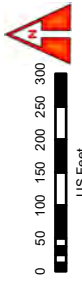
Take 50 EAST

EXIT Missouri Flat Rd

Turn LEFT on Missouri Flat Rd

Turn RIGHT Mother Lode Dr

Destination is in 2.4 miles

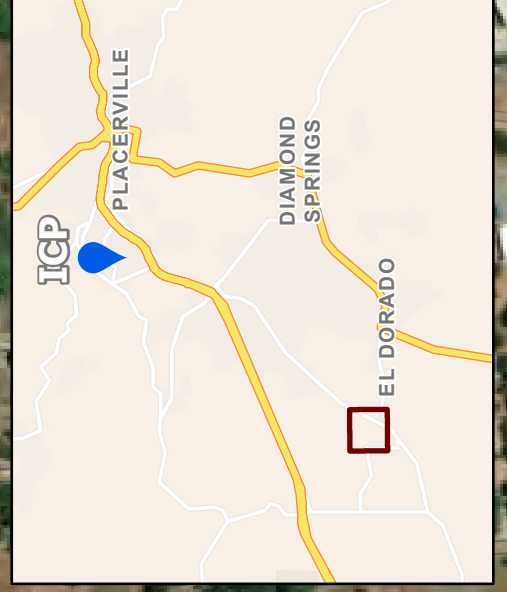


DISCLAIMER:
The displayed incident data is approximate and should not be used for legal purposes. The data was prepared from GIS data maintained by various sources and approved for use by CAL FIRE. CAL FIRE is not responsible for any errors or omissions in this information or for any consequences arising from its use.

120°52'W

Dozers and Heavy Equipment

**5854 Mother Lode Dr.
Placerville, CA 95667**





BASECAMP MAP
Caldor Incident
 CA-ENF-024030
 August 26, 2021

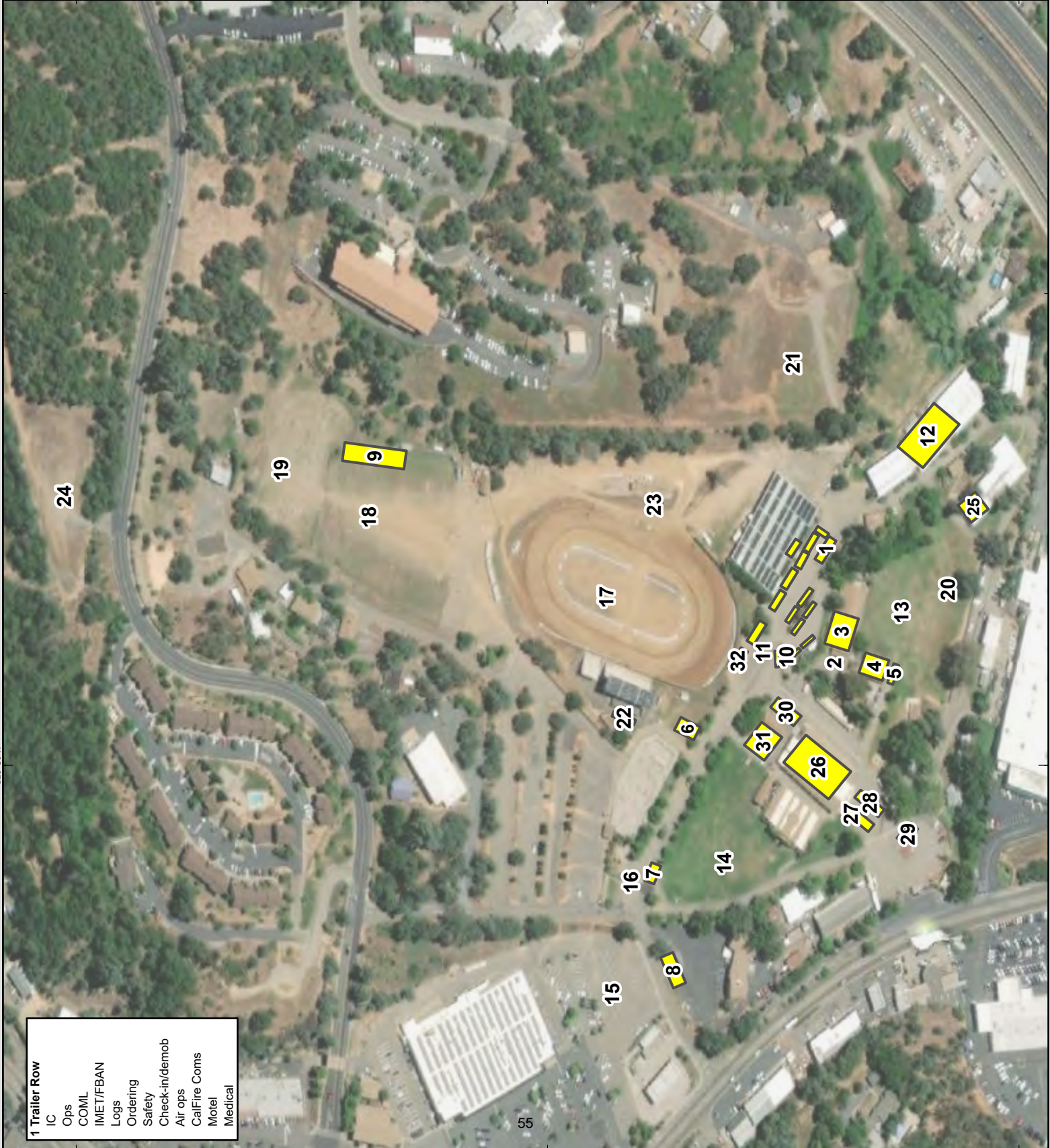
- 1 Trailer Row
- 2 GISS
- 3 Meeting
- 4 Equipment time
- 5 FSC
- 6 Lunch/water/ice
- 7 Liason
- 8 PIO/media
- 9 Inmate shower/laundry
- 10 Clerical
- 11 ESS
- 12 Supply
- 13 Briefing
- 14 Overhead parking
- 15 Sleeper trailers
- 16 Main gate
- 17 Tent sleeping
- 18 Engine & dozer parking
- 19 Inmate sleeping
- 20 Tent sleeping
- 21 Truck parking
- 22 Shower
- 23 Laundry
- 24 Vendor Parking
- 25 Facilities
- 26 Feeding
- 27 Plans
- 28 Situation
- 29 READ
- 30 MKU
- 31 CAL-MAT
- 32 IT

**Dozers and Heavy
 Equipment**

5854 Mother Lode Dr.
 Placerville, CA 95667



DISCLAIMER:
 The displayed incident data is approximate and should not be used for legal purposes. The data contained in this report was generated from GIS data maintained by various sources and approved for release to the public. It is not intended for use in any engineering standards.



- 1 Trailer Row
- IC
- Ops
- COML
- IMET/FBAN
- Logs
- Ordering
- Safety
- Check-in/demob
- Air ops
- CalFire Coms
- Motel
- Medical

120°50'W

120°50'W

UNIT LOG (ICS 214)

1. Incident Name: **2. Operational Period:** Date From: 8/27/21 Date To: 8/28/21
Caldor Incident Time From: 0700 Time To: 0700

3. Unit Name/Designators **4. Unit Leader (Name and ICS Position)**

5. Personnel Assigned/Designators

NAME	ICS POSITION	HOME BASE

6. Activity Log (Continue on Reverse)

TIME	MAJOR EVENTS

7. Prepared By: **Date/Time:** NIMS IAP