

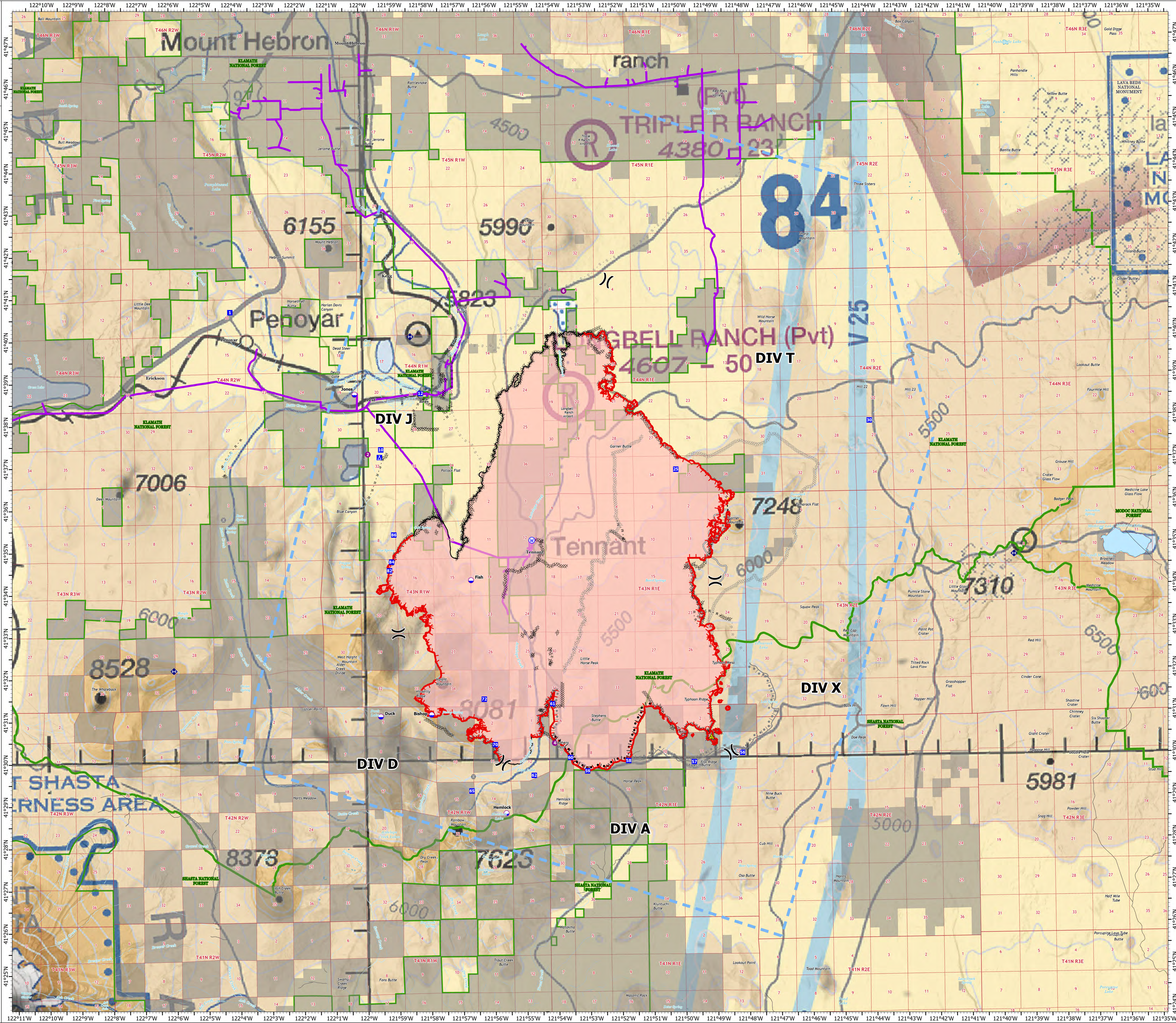
AIR OPS

Antelope
CAKNF-006454

8/11/2021

43,617 acres at 8/9/2021 2350

- Dip Site
- Helispot
- Division Break
- Drop Point
- Bridge
- Completed Burnout
- Completed Dozer Line
- Completed Hand Line
- Completed Mixed Construction Line
- Completed Road as Line
- Planned Burnout
- Planned Dozer Line
- Planned Road as Line
- Planned Secondary Line
- Access or Improved Road
- Highlighted Feature
- Temporary Flight Restriction
- Fire Edge
- Contained Line
- Wildfire Daily Fire Perimeter
- State or Territory
- County or Equivalent
- NPS
- Forest Service
- Powerlines
- Private
- Dip Site
- Helispot
- Drop Point
- Camp
- Repeater
- Safety Zone
- Water Source



Incident Name	FC Point Type	Label	Lat WGS84 DDM	Long WGS84 DDM
Antelope	Camp	Dry Lake	41° 37.194' N	121° 59.476' W
Antelope	Dip Site	Jones	41° 38.690' N	122° 00.241' W
Antelope	Dip Site	Hemlock	41° 38.740' N	121° 55.601' W
Antelope	Dip Site	Bishop	41° 31.090' N	121° 57.921' W
Antelope	Dip Site	Duck	41° 31.060' N	121° 59.521' W
Antelope	Dip Site	Fish	41° 34.264' N	121° 56.632' W
Antelope	Drop Point	10	41° 37.375' N	121° 59.430' W
Antelope	Drop Point	1	41° 40.664' N	122° 04.144' W
Antelope	Drop Point	62	41° 29.629' N	121° 54.716' W
Antelope	Drop Point	65	41° 29.276' N	121° 56.681' W
Antelope	Drop Point	70	41° 30.365' N	121° 55.932' W
Antelope	Drop Point	12	41° 38.700' N	121° 58.160' W
Antelope	Drop Point	25	41° 36.831' N	121° 50.126' W
Antelope	Drop Point	30	41° 37.934' N	121° 44.004' W
Antelope	Drop Point	61	41° 31.317' N	121° 54.110' W
Antelope	Drop Point	60	41° 30.040' N	121° 53.565' W
Antelope	Drop Point	59	41° 29.717' N	121° 53.031' W
Antelope	Drop Point	58	41° 29.550' N	121° 51.733' W
Antelope	Drop Point	57	41° 29.905' N	121° 49.665' W
Antelope	Drop Point	56	41° 30.108' N	121° 48.142' W
Antelope	Drop Point	84	41° 34.716' N	121° 59.127' W
Antelope	Drop Point	86	41° 35.357' N	121° 59.050' W
Antelope	Drop Point	72	41° 31.445' N	121° 56.259' W
Antelope	Drop Point	82	41° 34.510' N	121° 59.197' W
Antelope	Helispot	2	41° 37.267' N	121° 59.844' W
Antelope	Helispot	4	41° 30.387' N	121° 54.054' W
Antelope	Helispot	6	41° 41.086' N	121° 53.601' W
Antelope	Repeater	Cmd 7	41° 40.047' N	121° 58.465' W
Antelope	Repeater	Cmd 8	41° 34.732' N	121° 39.501' W
Antelope	Repeater	Cmd 9	41° 32.180' N	122° 06.024' W
Antelope	Safety Zone		41° 30.500' N	121° 49.113' W
Antelope	Water Source		41° 35.195' N	121° 54.701' W

SOUTHWEST AREA
INCIDENT MANAGEMENT TEAM 4