

AIR OPS

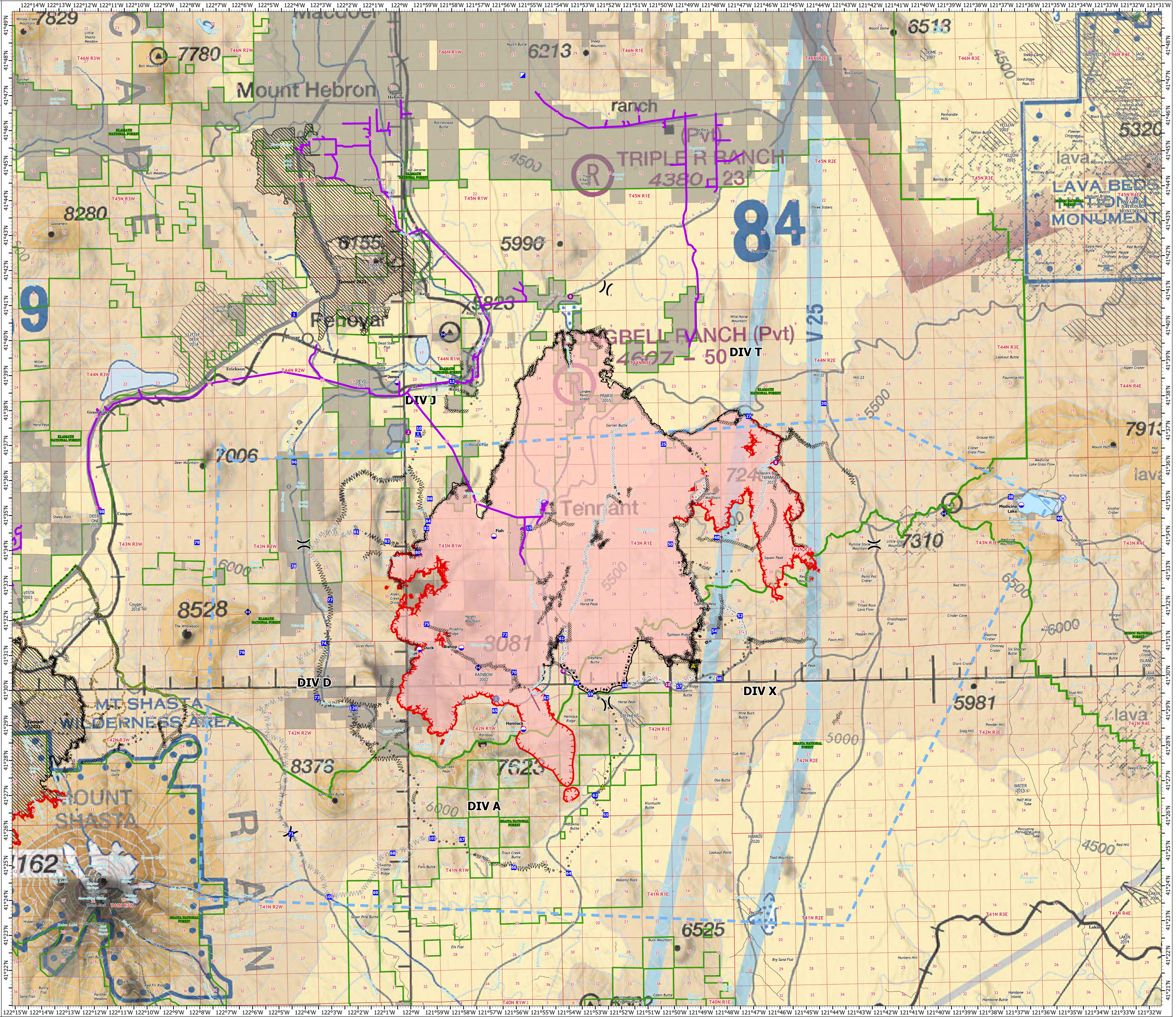
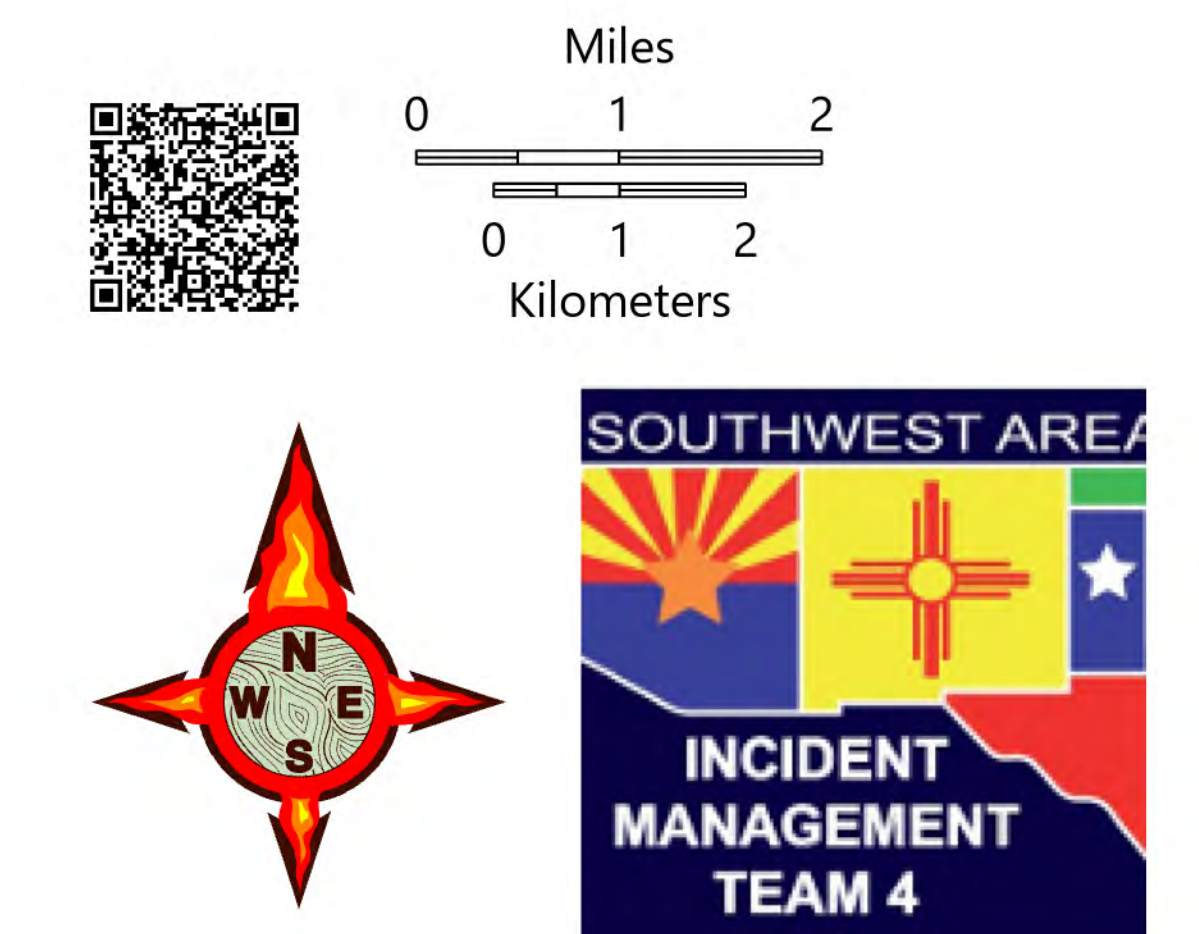
Antelope
CAKNF-006454

8/19/2021

60,634 acres at 8/18/2021 1700

- Dip Site
- Helispot
- X Division Break
- Drop Point
- Bridge
- Wildfire Daily Fire Perimeter
- State or Territory
- County or Equivalent
- NPS
- Forest Service
- Powerlines
- Private
- Dip Site
- Helispot
- Incident Command Post
- Drop Point
- Camp
- ♦ Repeater
- ⚡ Safety Zone
- 💧 Water Source
- Other 2021 Fires
- USFS RS Fire Perimeters
- Completed Burnout
- Completed Dozer Line
- Completed Fuel Break
- Completed Hand Line
- Completed Mixed Construction Line
- Completed Road as Line
- Planned Burnout
- Planned Road Line
- Planned Fuel Break
- Planned Road as Line
- Planned Secondary Line
- Access or Improved Road
- Highlighted Feature
- Other
- Road Repair
- Retardant Drop
- Temporary Flight Restriction
- Fire Edge
- Contained Line

Incident Name/C Point Type	Label	Lat WGS84	Long WGS84	DOM	DOM
Airlock	31	41° 11' 00" N	121° 52' 50" W		
Airlock	32	41° 11' 00" N	121° 52' 50" W		
Airlock	33	41° 11' 00" N	121° 52' 50" W		
Airlock	34	41° 11' 00" N	121° 52' 50" W		
Airlock	35	41° 11' 00" N	121° 52' 50" W		
Airlock	36	41° 11' 00" N	121° 52' 50" W		
Airlock	37	41° 11' 00" N	121° 52' 50" W		
Airlock	38	41° 11' 00" N	121° 52' 50" W		
Airlock	39	41° 11' 00" N	121° 52' 50" W		
Airlock	40	41° 11' 00" N	121° 52' 50" W		
Airlock	41	41° 11' 00" N	121° 52' 50" W		
Airlock	42	41° 11' 00" N	121° 52' 50" W		
Airlock	43	41° 11' 00" N	121° 52' 50" W		
Airlock	44	41° 11' 00" N	121° 52' 50" W		
Airlock	45	41° 11' 00" N	121° 52' 50" W		
Airlock	46	41° 11' 00" N	121° 52' 50" W		
Airlock	47	41° 11' 00" N	121° 52' 50" W		
Airlock	48	41° 11' 00" N	121° 52' 50" W		
Airlock	49	41° 11' 00" N	121° 52' 50" W		
Airlock	50	41° 11' 00" N	121° 52' 50" W		
Airlock	51	41° 11' 00" N	121° 52' 50" W		
Airlock	52	41° 11' 00" N	121° 52' 50" W		
Airlock	53	41° 11' 00" N	121° 52' 50" W		
Airlock	54	41° 11' 00" N	121° 52' 50" W		
Airlock	55	41° 11' 00" N	121° 52' 50" W		
Airlock	56	41° 11' 00" N	121° 52' 50" W		
Airlock	57	41° 11' 00" N	121° 52' 50" W		
Airlock	58	41° 11' 00" N	121° 52' 50" W		
Airlock	59	41° 11' 00" N	121° 52' 50" W		
Airlock	60	41° 11' 00" N	121° 52' 50" W		
Airlock	61	41° 11' 00" N	121° 52' 50" W		
Airlock	62	41° 11' 00" N	121° 52' 50" W		
Airlock	63	41° 11' 00" N	121° 52' 50" W		
Airlock	64	41° 11' 00" N	121° 52' 50" W		
Airlock	65	41° 11' 00" N	121° 52' 50" W		
Airlock	66	41° 11' 00" N	121° 52' 50" W		
Airlock	67	41° 11' 00" N	121° 52' 50" W		
Airlock	68	41° 11' 00" N	121° 52' 50" W		
Airlock	69	41° 11' 00" N	121° 52' 50" W		
Airlock	70	41° 11' 00" N	121° 52' 50" W		
Airlock	71	41° 11' 00" N	121° 52' 50" W		
Airlock	72	41° 11' 00" N	121° 52' 50" W		
Airlock	73	41° 11' 00" N	121° 52' 50" W		
Airlock	74	41° 11' 00" N	121° 52' 50" W		
Airlock	75	41° 11' 00" N	121° 52' 50" W		
Airlock	76	41° 11' 00" N	121° 52' 50" W		
Airlock	77	41° 11' 00" N	121° 52' 50" W		
Airlock	78	41° 11' 00" N	121° 52' 50" W		
Airlock	79	41° 11' 00" N	121° 52' 50" W		
Airlock	80	41° 11' 00" N	121° 52' 50" W		
Airlock	81	41° 11' 00" N	121° 52' 50" W		
Airlock	82	41° 11' 00" N	121° 52' 50" W		
Airlock	83	41° 11' 00" N	121° 52' 50" W		
Airlock	84	41° 11' 00" N	121° 52' 50" W		
Airlock	85	41° 11' 00" N	121° 52' 50" W		
Airlock	86	41° 11' 00" N	121° 52' 50" W		
Airlock	87	41° 11' 00" N	121° 52' 50" W		
Airlock	88	41° 11' 00" N	121° 52' 50" W		
Airlock	89	41° 11' 00" N	121° 52' 50" W		
Airlock	90	41° 11' 00" N	121° 52' 50" W		
Airlock	91	41° 11' 00" N	121° 52' 50" W		
Airlock	92	41° 11' 00" N	121° 52' 50" W		
Airlock	93	41° 11' 00" N	121° 52' 50" W		
Airlock	94	41° 11' 00" N	121° 52' 50" W		
Airlock	95	41° 11' 00" N	121° 52' 50" W		
Airlock	96	41° 11' 00" N	121° 52' 50" W		
Airlock	97	41° 11' 00" N	121° 52' 50" W		
Airlock	98	41° 11' 00" N	121° 52' 50" W		
Airlock	99	41° 11' 00" N	121° 52' 50" W		
Airlock	100	41° 11' 00" N	121° 52' 50" W		



1:60,000 - SHWMTA - 8/18/2021 2053
Acres from IR
North American 1983 Datum, Lat/Long Grid