

Branch I

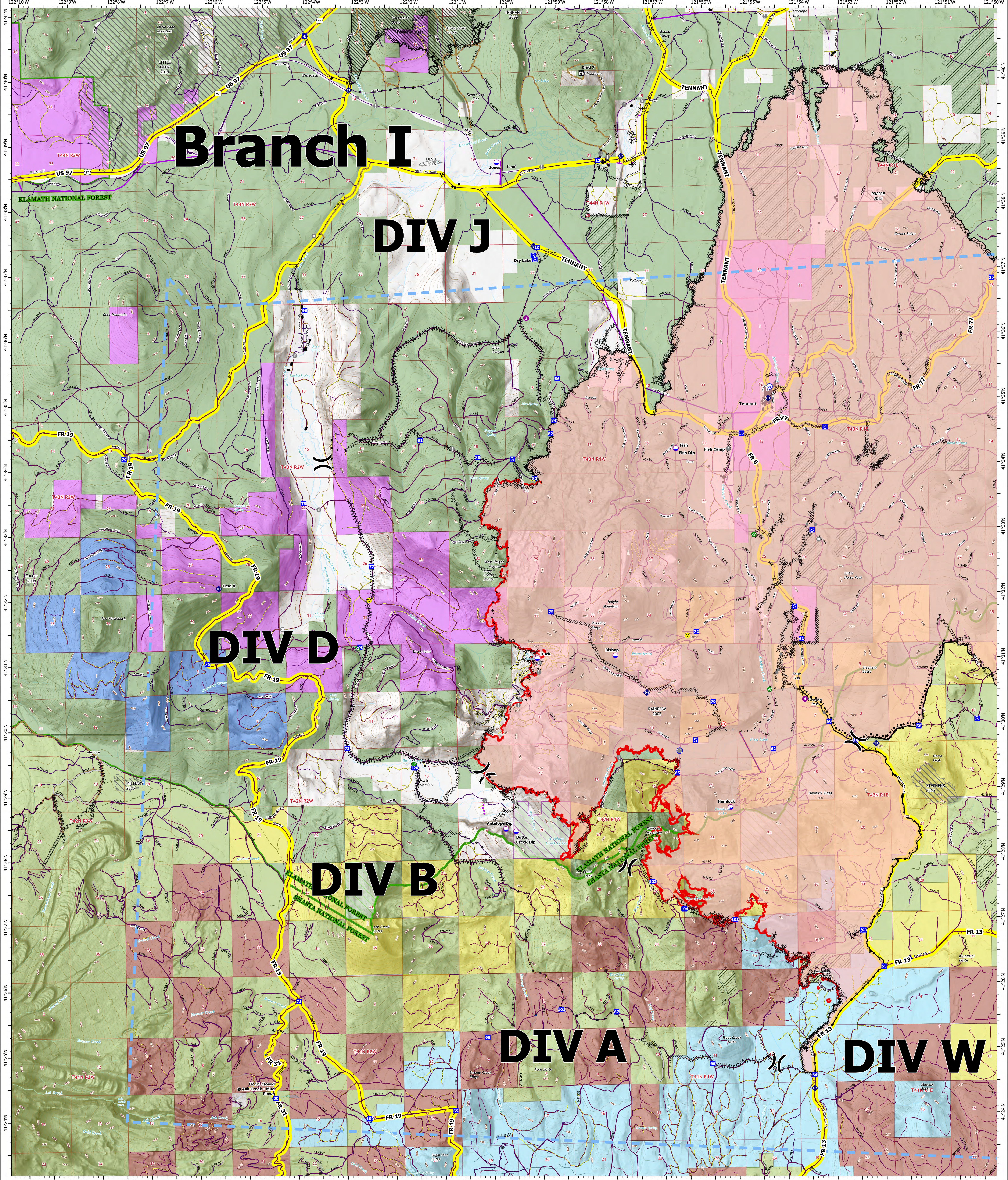
DIV J

DIV D

DIV B

DIV A

DIV W



OPS BRANCH I

Antelope
CAKNF-006454
8/28/2021

71,326 acres at 8/26/2021 1940

1:32,000 - SA Red IMT - 8/27/2021 2100
Acres from IR
North American 1983 Datum, LatLong Grid

- | | | | | | | | |
|--|---|--|--|---|--|---|--|
| <ul style="list-style-type: none"> Dip Site Helispot Division Break Drop Point Closure Camp Staging Area Lookout Fire Origin Value at Risk Other | <ul style="list-style-type: none"> Landmark Gate Bridge Water Development or Draft Site Repeater Safety Zone Hazard Water Source Completed Burnout Completed Dozer Line | <ul style="list-style-type: none"> Completed Fuel Break Completed Hand Line Completed Mixed Construction Line Completed Road as Line Access or Improved Road Retardant Drop Route Temporary Flight Restriction | <ul style="list-style-type: none"> Fire Edge Contained Line Completed Dozer Line Completed Fuel Break Completed Hand Line Completed Road as Line Access or Improved Road Repair Line | <ul style="list-style-type: none"> Road Repair Contained Line Wildfire Daily Fire Perimeter waterhole - Siskiyou Sierra Pacific Gates FSTopo Building PT Sierra Pacific Roads USFS Roads State Highway/County Road/Interstate Forest Road | <ul style="list-style-type: none"> Private/Other Road Main Roads Railroads Powerlines Special Interest Avoidance Areas KNF Research Natural Area SHT Spotted Owl Habitat Fire History - Underburn Underburn Treatments | <ul style="list-style-type: none"> 2021 Tennant Fire USFS R5 Fire Perimeters Forest Boundaries State or Territory County or Equivalent Klamath National Forest Shasta-Trinity National Forest CAMPBELL GLOBAL LLC | <ul style="list-style-type: none"> FRUIT GROWERS SUPPLY COMPANY HANCOCK TIMBER RESOURCE GROUP MICHIGAN-CALIFORNIA TIMBER COMPANY SIERRA PACIFIC INDUSTRIES |
|--|---|--|--|---|--|---|--|