

Branch I

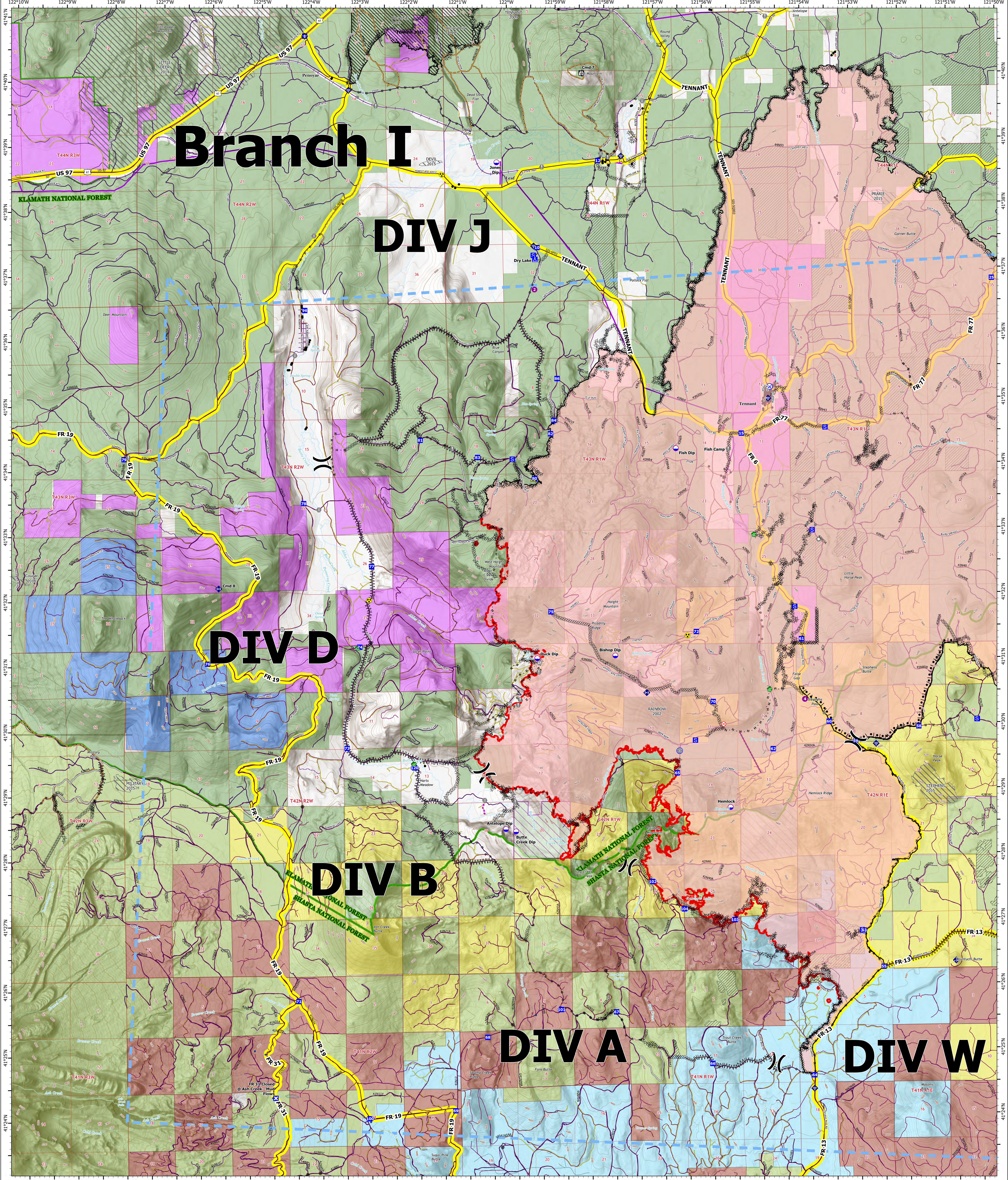
DIV J

DIV D

DIV B

DIV A

DIV W



OPS BRANCH I

Antelope
CAKNF-006454
8/29/2021

71,408 acres at 8/27/2021 2330

1:32,000 - SA Red IMT - 8/28/2021 2106
Acres from IR
North American 1983 Datum, LatLong Grid

<ul style="list-style-type: none"> Dip Site Helispot Division Break Drop Point Closure Staging Area Lookout Fire Origin Value at Risk Other 	<ul style="list-style-type: none"> Landmark Gate Bridge Water Development or Draft Site Mobile Weather Unit Internet Access Repeater Safety Zone Hazard Water Source Completed Burnout 	<ul style="list-style-type: none"> Completed Dozer Line Completed Fuel Break Completed Hand Line Completed Mixed Construction Line Completed Road as Line Access or Improved Road Retardant Drop Route 	<ul style="list-style-type: none"> Temporary Flight Restriction Fire Edge Contained Line Completed Dozer Line Completed Fuel Break Completed Hand Line Completed Road as Line Access or Improved Road 	<ul style="list-style-type: none"> Repair Line Road Repair Contained Line Wildfire Daily Fire Perimeter Waterhole/Siskiyou Sierra Pacific Gates FSTopo Building PT Sierra Pacific Roads USFS Roads State Highway/County Road/Interstate 	<ul style="list-style-type: none"> Forest Road Private/Other Road Main Roads Railroads Powerlines Special Interest Avoidance Areas KNF Research Natural Area SHT Spotted Owl Habitat 	<ul style="list-style-type: none"> Fire History - Underburn Underburn Treatments 2021 Tennant Fire USFS R5 Fire Perimeters Forest Boundaries State or Territory County or Equivalent Klamath National Forest 	<ul style="list-style-type: none"> Shasta-Trinity National Forest CAMPBELL GLOBAL LLC FRUIT GROWERS SUPPLY COMPANY HANCOCK TIMBER RESOURCE GROUP MICHIGAN-CALIFORNIA TIMBER COMPANY SIERRA PACIFIC INDUSTRIES
---	---	--	---	---	---	--	---