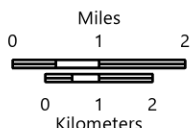
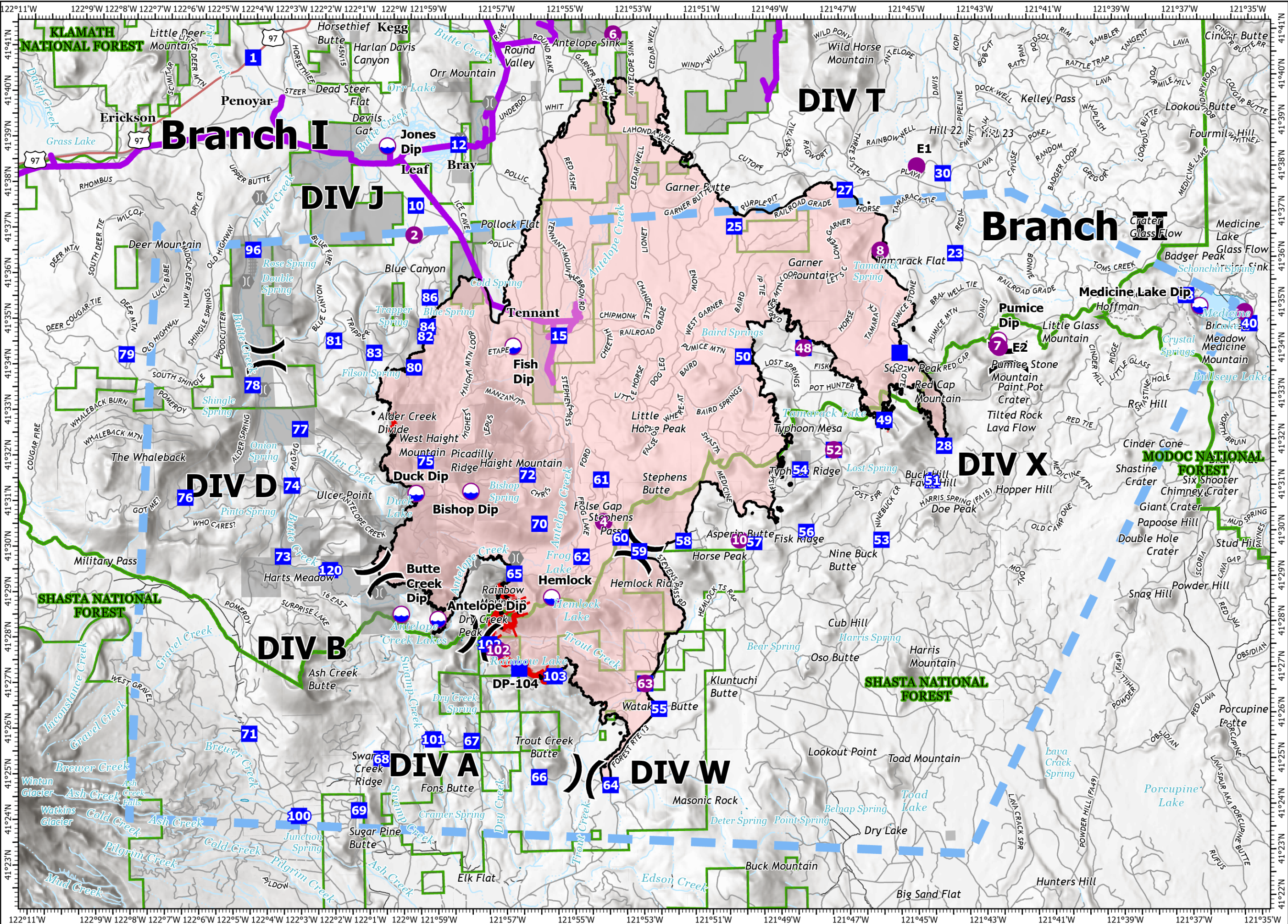


# PILOT

Antelope  
CAKNF-006454  
9/4/2021

71,505 acres at 9/3/2021 0010

- Dip Site
- Helispot
- Division Break
- Drop Point
- Bridge
- Temporary Flight Restriction
- Fire Edge
- Contained Line
- Wildfire Daily Fire Perimeter
- Powerlines
- Private
- NPS
- Forest Service



9/3/2021  
7:44 PM

| Type                | Label                   | Lat WGS84     | Long WGS84     | Elev Feet |
|---------------------|-------------------------|---------------|----------------|-----------|
| Dip Site            | Antelope Dip            | 41° 28.282' N | 121° 58.922' W | 6,756     |
| Dip Site            | Bishop Dip              | 41° 31.090' N | 121° 57.920' W | 6,714     |
| Dip Site            | Butte Creek Dip         | 41° 28.402' N | 122° 00.000' W | 6,352     |
| Dip Site            | Duck Dip                | 41° 31.060' N | 121° 59.520' W | 6,513     |
| Dip Site            | Fish Dip                | 41° 34.264' N | 121° 56.632' W | 4,924     |
| Dip Site            | Jones Dip               | 41° 38.690' N | 122° 00.240' W | 4,664     |
| Dip Site            | Medicine Lake Dip       | 41° 34.944' N | 121° 36.545' W | 6,662     |
| Dip Site            | Pumice Dip              | 41° 34.250' N | 121° 42.440' W | 6,424     |
| Drop Point          | 1                       | 41° 40.663' N | 122° 04.144' W | 4,889     |
| Drop Point          | 10                      | 41° 37.374' N | 121° 59.429' W | 4,660     |
| Drop Point          | 100                     | 41° 24.012' N | 122° 03.044' W | 5,025     |
| Drop Point          | 101                     | 41° 25.656' N | 121° 59.108' W | 5,241     |
| Drop Point          | 102                     | 41° 27.724' N | 121° 57.440' W | 6,578     |
| Drop Point          | 103                     | 41° 27.008' N | 121° 55.538' W | 5,754     |
| Drop Point          | 12                      | 41° 38.700' N | 121° 58.160' W | 4,649     |
| Drop Point          | 120                     | 41° 29.399' N | 122° 02.056' W | 5,768     |
| Drop Point          | 15                      | 41° 34.484' N | 121° 55.288' W | 4,848     |
| Drop Point          | 23                      | 41° 36.178' N | 121° 43.673' W | 5,623     |
| Drop Point          | 25                      | 41° 36.831' N | 121° 50.125' W | 5,039     |
| Drop Point          | 27                      | 41° 37.599' N | 121° 46.876' W | 5,186     |
| Drop Point          | 28                      | 41° 31.956' N | 121° 44.081' W | 5,766     |
| Drop Point          | 30                      | 41° 37.934' N | 121° 44.003' W | 5,298     |
| Drop Point          | 38                      | 41° 35.178' N | 121° 36.946' W | 6,719     |
| Drop Point          | 40                      | 41° 34.540' N | 121° 35.106' W | 6,721     |
| Drop Point          | 48                      | 41° 34.145' N | 121° 48.146' W | 5,918     |
| Drop Point          | 49                      | 41° 32.543' N | 121° 45.815' W | 6,357     |
| Drop Point          | 50                      | 41° 33.973' N | 121° 49.918' W | 5,818     |
| Drop Point          | 51                      | 41° 31.202' N | 121° 44.430' W | 5,640     |
| Drop Point          | 52                      | 41° 31.900' N | 121° 47.303' W | 5,922     |
| Drop Point          | 53                      | 41° 29.913' N | 121° 45.948' W | 5,370     |
| Drop Point          | 54                      | 41° 31.477' N | 121° 48.293' W | 5,855     |
| Drop Point          | 55                      | 41° 26.263' N | 121° 52.506' W | 4,923     |
| Drop Point          | 56                      | 41° 30.107' N | 121° 48.142' W | 5,595     |
| Drop Point          | 57                      | 41° 29.904' N | 121° 49.665' W | 5,489     |
| Drop Point          | 58                      | 41° 29.950' N | 121° 51.732' W | 5,601     |
| Drop Point          | 59                      | 41° 29.734' N | 121° 53.028' W | 5,459     |
| Drop Point          | 60                      | 41° 30.039' N | 121° 53.564' W | 5,552     |
| Drop Point          | 61                      | 41° 31.316' N | 121° 54.109' W | 5,401     |
| Drop Point          | 62                      | 41° 29.628' N | 121° 54.715' W | 5,447     |
| Drop Point          | 63                      | 41° 26.823' N | 121° 52.903' W | 4,910     |
| Drop Point          | 64                      | 41° 24.606' N | 121° 53.949' W | 4,704     |
| Drop Point          | 65                      | 41° 29.276' N | 121° 56.681' W | 5,555     |
| Drop Point          | 66                      | 41° 24.800' N | 121° 56.028' W | 4,857     |
| Drop Point          | 67                      | 41° 25.611' N | 121° 57.983' W | 5,135     |
| Drop Point          | 68                      | 41° 25.242' N | 122° 00.621' W | 5,190     |
| Drop Point          | 69                      | 41° 24.119' N | 122° 01.292' W | 4,788     |
| Drop Point          | 70                      | 41° 30.365' N | 121° 55.931' W | 6,371     |
| Drop Point          | 71                      | 41° 25.823' N | 122° 04.470' W | 5,662     |
| Drop Point          | 72                      | 41° 31.444' N | 121° 56.259' W | 6,036     |
| Drop Point          | 73                      | 41° 29.709' N | 122° 03.430' W | 5,716     |
| Drop Point          | 74                      | 41° 31.264' N | 122° 03.148' W | 5,377     |
| Drop Point          | 75                      | 41° 31.774' N | 121° 59.230' W | 7,022     |
| Drop Point          | 76                      | 41° 31.025' N | 122° 06.265' W | 6,110     |
| Drop Point          | 77                      | 41° 32.501' N | 122° 02.888' W | 5,114     |
| Drop Point          | 78                      | 41° 33.476' N | 122° 04.266' W | 5,035     |
| Drop Point          | 79                      | 41° 34.182' N | 122° 07.932' W | 5,775     |
| Drop Point          | 80                      | 41° 33.826' N | 121° 59.535' W | 6,436     |
| Drop Point          | 81                      | 41° 34.432' N | 122° 01.867' W | 5,837     |
| Drop Point          | 82                      | 41° 34.510' N | 121° 59.197' W | 5,570     |
| Drop Point          | 83                      | 41° 34.158' N | 122° 00.695' W | 6,190     |
| Drop Point          | 84                      | 41° 34.715' N | 121° 59.127' W | 5,369     |
| Drop Point          | 86                      | 41° 35.357' N | 121° 59.050' W | 5,148     |
| Drop Point          | 96                      | 41° 36.447' N | 122° 04.201' W | 4,888     |
| Drop Point          | 98                      | 41° 35.085' N | 122° 11.542' W | 4,811     |
| Drop Point          | DP-104                  | 41° 27.183' N | 121° 56.570' W | 6,428     |
| Helibase            | Siskiyou County Airport | 41° 46.744' N | 122° 28.126' W | 2,645     |
| Helispot            | 10                      | 41° 29.957' N | 121° 50.096' W | 5,526     |
| Helispot            | 102                     | 41° 27.600' N | 121° 57.186' W | 6,559     |
| Helispot            | 2                       | 41° 36.730' N | 121° 59.491' W | 4,658     |
| Helispot            | 4                       | 41° 30.387' N | 121° 54.053' W | 5,646     |
| Helispot            | 48                      | 41° 34.145' N | 121° 48.146' W | 5,918     |
| Helispot            | 52                      | 41° 31.900' N | 121° 47.303' W | 5,922     |
| Helispot            | 54                      | 41° 31.477' N | 121° 28.293' W | 6,635     |
| Helispot            | 6                       | 41° 41.085' N | 121° 53.601' W | 4,555     |
| Helispot            | 63                      | 41° 26.823' N | 121° 52.903' W | 4,910     |
| Helispot            | 7                       | 41° 34.138' N | 121° 42.480' W | 6,409     |
| Helispot            | 8                       | 41° 36.262' N | 121° 45.866' W | 5,535     |
| Helispot            | E1                      | 41° 38.098' N | 121° 44.765' W | 5,265     |
| Helispot            | E2                      | 41° 34.099' N | 121° 42.430' W | 6,407     |
| Mobile Weather Unit |                         | 41° 20.779' N | 121° 53.466' W | 6,493     |
| Repeater            |                         | 41° 47.700' N | 122° 09.328' W | 7,775     |
| Repeater            | Cmd 10                  | 41° 20.800' N | 121° 53.468' W | 6,494     |
| Repeater            | Cmd 7                   | 41° 40.046' N | 121° 58.465' W | 5,829     |
| Repeater            | Cmd 8                   | 41° 32.180' N | 122° 06.023' W | 7,454     |
| Repeater            | Cmd 9                   | 41° 34.732' N | 121° 39.500' W | 7,289     |
| Repeater            | L 2                     | 40° 40.053' N | 121° 58.500' W | 1,975     |
| Safety Zone         |                         | 41° 30.499' N | 121° 49.113' W | 5,822     |
| Safety Zone         |                         | 41° 31.950' N | 122° 01.350' W | 5,556     |
| Safety Zone         |                         | 41° 27.072' N | 121° 52.614' W | 4,912     |
| Safety Zone         |                         | 41° 33.824' N | 121° 59.563' W | 6,437     |
| Safety Zone         |                         | 41° 35.208' N | 121° 36.954' W | 6,724     |