

AIR OPS

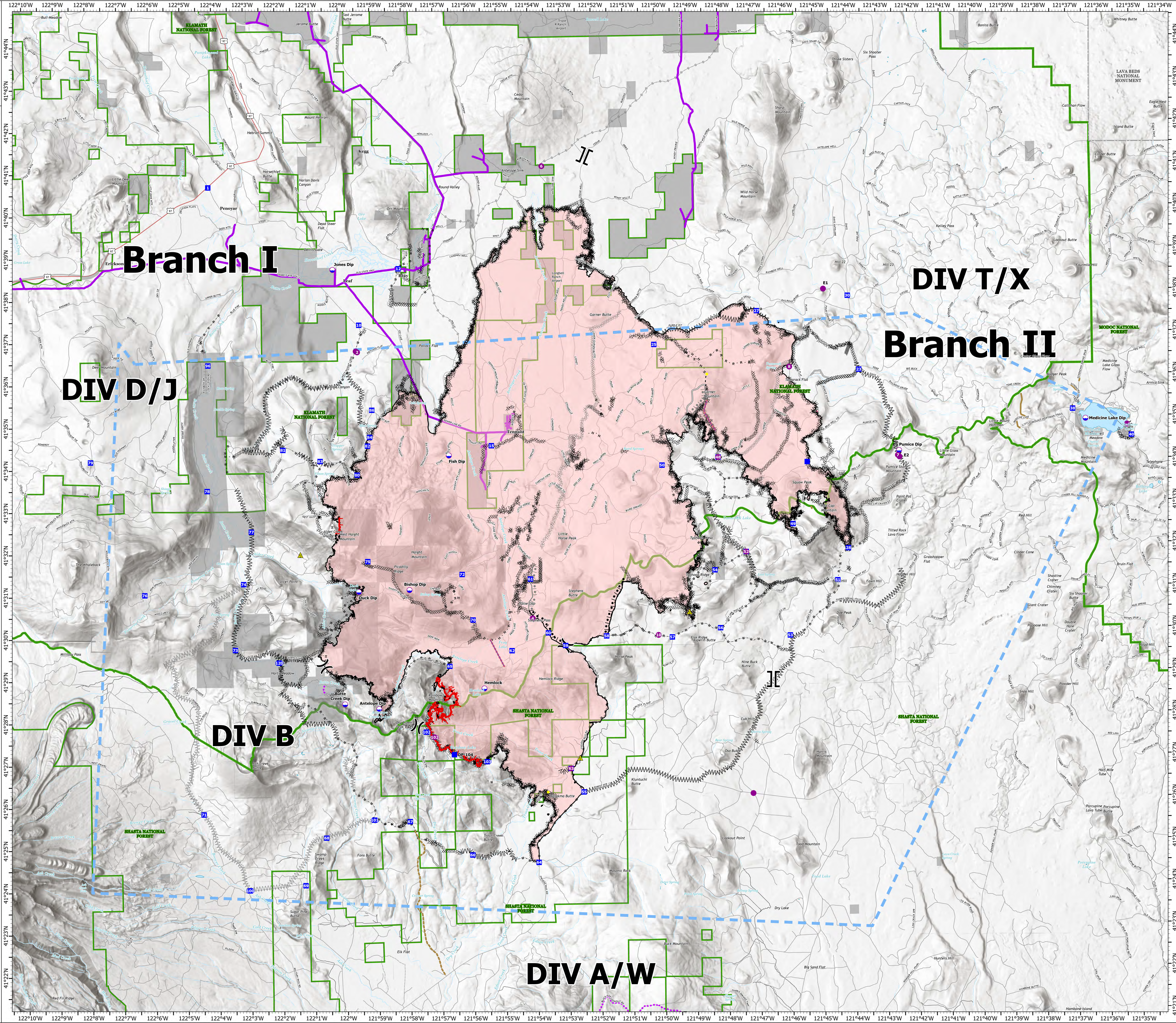
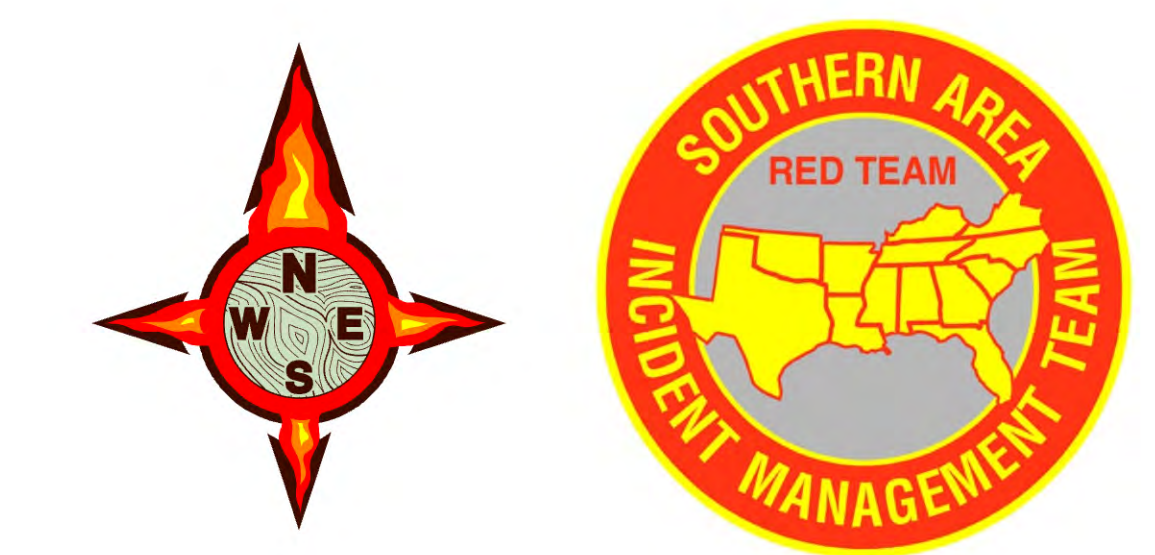
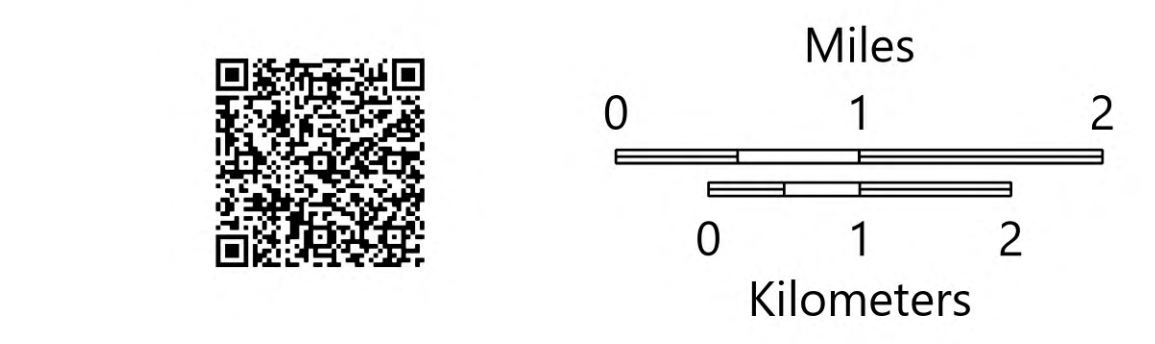
Antelope
CAKNF-006454

9/6/2021

71,508 acres at 9/4/2021 2240

- Dip Site
- Helispot
- Division Break
- Branch Break
- Drop Point
- Safety Zone
- Completed Burnout
- Completed Dozer Line
- Completed Fuel Break
- Completed Hand Line
- Completed Mixed Construction Line
- Completed Road as Line
- Planned Burnout
- Planned Dozer Line
- Planned Fuel Break
- Planned Hand Line
- Planned Road as Line
- Planned Secondary Line
- Access or Improved Road
- Highlighted Feature
- Other
- Repair Line
- Road Repair
- Retardant Drop
- Route
- Temporary Flight Restriction
- Fire Edge
- Contained Line
- Wildfire Daily Fire Perimeter
- State or Territory
- County or Equivalent
- NPS
- Forest Service
- Powerlines
- Private

Type	Label	Lat WGS84	Long WGS84	Elev Feet
Dip Site	Antelope Dip	41° 28.20' N	122° 04.00' W	8,705
Dip Site	Bishop Dip	41° 31.200' N	121° 57.620' W	6,714
Dip Site	Bulls Creek Dip	41° 28.402' N	122° 00.000' W	6,362
Dip Site	Chick Dip	41° 31.200' N	121° 59.200' W	6,513
Dip Site	Fish Dip	41° 34.204' N	121° 56.632' W	4,524
Dip Site	Jones Dip	41° 38.000' N	121° 00.000' W	4,664
Dip Site	Medicine Lake Dip	41° 34.944' N	121° 36.540' W	6,662
Dip Site	Pumice Dip	41° 34.250' N	121° 42.440' W	6,424
Drop Point	1	41° 40.883' N	122° 04.144' W	4,889
Drop Point	10	41° 37.374' N	121° 58.229' W	4,660
Drop Point	100	41° 24.012' N	122° 03.044' W	5,025
Drop Point	101	41° 25.636' N	121° 59.108' W	5,241
Drop Point	102	41° 27.178' N	121° 57.400' W	5,518
Drop Point	103	41° 27.008' N	121° 55.538' W	5,754
Drop Point	12	41° 38.700' N	121° 58.760' W	4,569
Drop Point	120	41° 29.390' N	122° 02.060' W	5,508
Drop Point	15	41° 34.484' N	121° 55.288' W	4,848
Drop Point	23	41° 36.319' N	121° 50.150' W	5,039
Drop Point	25	41° 37.599' N	121° 46.876' W	5,186
Drop Point	27	41° 37.599' N	121° 46.876' W	5,186
Drop Point	28	41° 33.992' N	121° 44.811' W	5,266
Drop Point	30	41° 37.934' N	121° 44.003' W	5,268
Drop Point	38	41° 35.178' N	121° 36.940' W	6,719
Drop Point	40	41° 34.540' N	121° 35.700' W	6,921
Drop Point	48	41° 34.145' N	121° 48.146' W	5,918
Drop Point	49	41° 33.587' N	121° 45.810' W	6,307
Drop Point	50	41° 33.973' N	121° 49.918' W	5,818
Drop Point	51	41° 31.202' N	121° 44.430' W	5,640
Drop Point	52	41° 31.000' N	121° 49.000' W	5,902
Drop Point	53	41° 29.913' N	121° 45.948' W	5,370
Drop Point	54	41° 31.477' N	121° 46.293' W	5,885
Drop Point	55	41° 29.200' N	121° 52.500' W	4,970
Drop Point	56	41° 30.107' N	121° 48.142' W	5,565
Drop Point	57	41° 29.044' N	121° 49.668' W	5,488
Drop Point	58	41° 29.950' N	121° 51.732' W	5,601
Drop Point	59	41° 29.734' N	121° 53.028' W	5,459
Drop Point	60	41° 30.090' N	121° 53.504' W	5,502
Drop Point	61	41° 31.316' N	121° 54.109' W	5,401
Drop Point	62	41° 29.628' N	121° 54.719' W	5,447
Drop Point	63	41° 28.823' N	121° 52.903' W	4,910
Drop Point	64	41° 24.608' N	121° 53.949' W	4,704
Drop Point	65	41° 29.716' N	121° 56.111' W	5,565
Drop Point	66	41° 24.800' N	121° 56.028' W	4,857
Drop Point	67	41° 25.011' N	121° 57.283' W	5,135
Drop Point	68	41° 25.242' N	122° 00.000' W	5,100
Drop Point	69	41° 24.119' N	122° 01.292' W	4,788
Drop Point	70	41° 30.860' N	121° 55.811' W	5,035
Drop Point	71	41° 25.823' N	122° 04.700' W	5,062
Drop Point	72	41° 31.444' N	121° 56.259' W	6,036
Drop Point	73	41° 29.709' N	122° 03.200' W	5,718
Drop Point	74	41° 31.284' N	122° 03.148' W	5,377
Drop Point	75	41° 31.774' N	121° 59.230' W	5,022
Drop Point	76	41° 31.026' N	122° 06.268' W	6,110
Drop Point	77	41° 32.501' N	122° 02.888' W	6,114
Drop Point	78	41° 33.416' N	122° 04.588' W	6,311
Drop Point	79	41° 34.182' N	122° 07.202' W	5,775
Drop Point	80	41° 33.826' N	121° 59.535' W	6,436
Drop Point	81	41° 34.432' N	122° 01.840' W	5,807
Drop Point	82	41° 34.510' N	121° 58.191' W	5,570
Drop Point	83	41° 34.158' N	122° 00.699' W	6,160
Drop Point	84	41° 34.719' N	121° 58.170' W	5,589
Drop Point	86	41° 35.357' N	121° 59.050' W	5,148
Drop Point	88	41° 36.447' N	122° 04.211' W	4,588
Drop Point	89	41° 35.989' N	122° 11.542' W	4,811
Drop Point	90	41° 27.383' N	121° 56.570' W	6,428
Drop Point	DP-104	41° 27.383' N	121° 56.570' W	6,428
Helibase	Siskiyou County Airport	41° 46.744' N	122° 28.128' W	2,645
Helispot	10	41° 29.897' N	121° 50.090' W	5,528
Helispot	102	41° 27.000' N	121° 57.180' W	5,009
Helispot	2	41° 36.730' N	121° 59.491' W	4,658
Helispot	4	41° 32.887' N	121° 54.050' W	5,648
Helispot	48	41° 34.145' N	121° 48.146' W	5,918
Helispot	52	41° 31.500' N	121° 47.303' W	5,562
Helispot	54	41° 31.717' N	121° 53.601' W	6,635
Helispot	6	41° 41.089' N	121° 53.601' W	2,505
Helispot	63	41° 28.823' N	121° 52.903' W	4,910
Helispot	7	41° 34.158' N	121° 52.480' W	6,409
Helispot	8	41° 36.262' N	121° 45.868' W	5,535
Helispot	11	41° 38.088' N	121° 42.430' W	5,265
Helispot	E2	41° 34.099' N	121° 42.430' W	6,407
Mobile Weather Unit		41° 29.779' N	121° 53.486' W	6,493
Repeater		41° 47.700' N	122° 58.328' W	7,775
Repeater	Cmd 10	41° 20.800' N	121° 53.486' W	6,494
Repeater	Cmd 7	41° 40.046' N	121° 58.489' W	5,829
Repeater	Cmd 6	41° 32.180' N	122° 06.212' W	7,484
Repeater	Cmd 9	41° 34.732' N	121° 39.500' W	7,289
Repeater	L 2	40° 40.053' N	121° 58.500' W	1,975
Safety Zone		41° 30.499' N	121° 48.113' W	5,822
Safety Zone		41° 33.260' N	122° 01.360' W	5,588
Safety Zone		41° 27.072' N	121° 52.214' W	4,912
Safety Zone		41° 33.824' N	121° 59.563' W	6,437
Safety Zone		41° 35.238' N	121° 36.954' W	6,244



Branch I

DIV T/X
Branch II

DIV D/J

DIV B

DIV A/W