

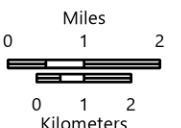
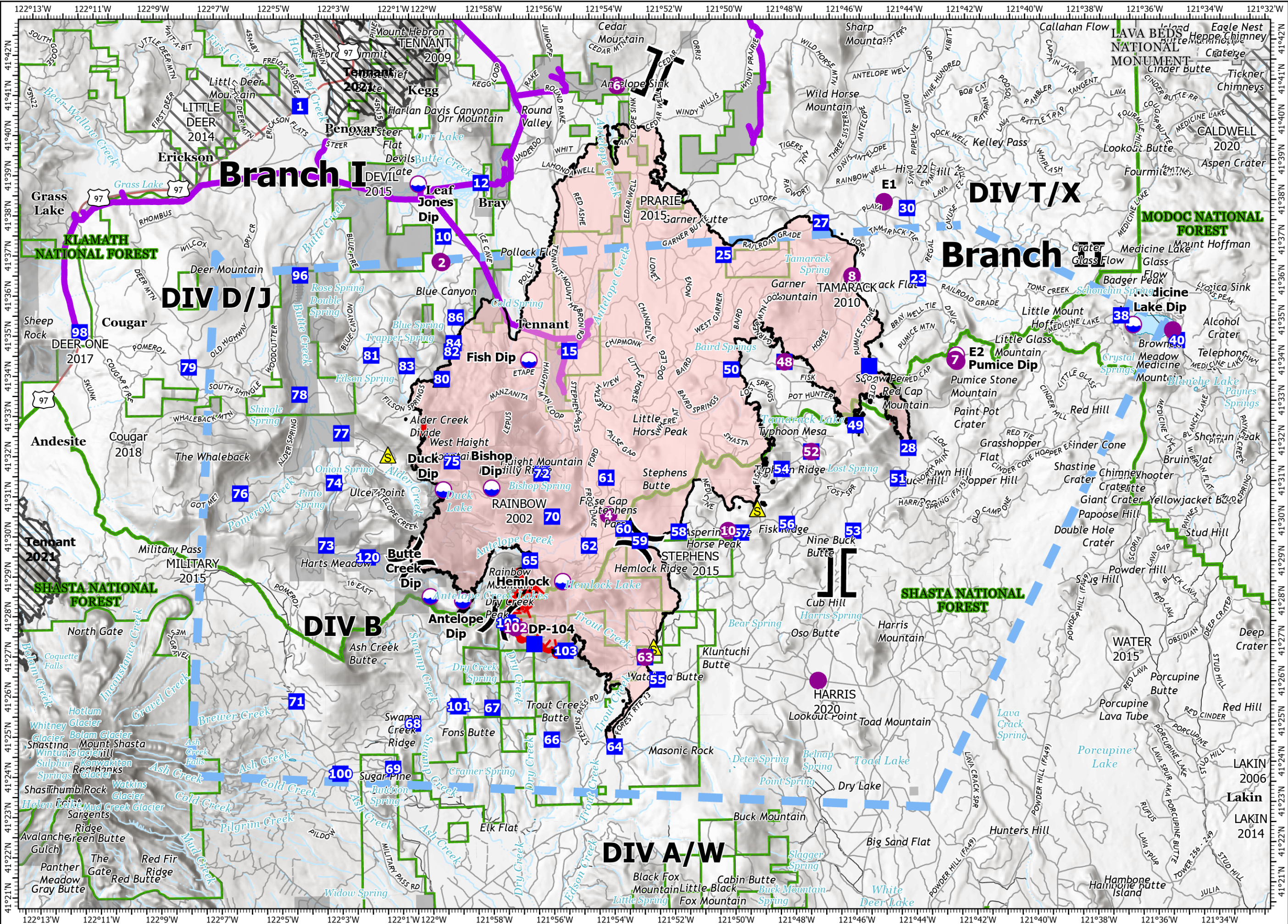
# PILOT

Antelope  
CAKNF-006454

9/6/2021

71,508 acres at 9/4/2021 2240

- Dip Site
- Helispot
- Division Break
- Branch Break
- Drop Point
- Safety Zone
- Temporary Flight Restriction
- Fire Edge
- Contained Line
- Wildfire Daily Fire Perimeter
- Powerlines
- Private
- NPS
- Forest Service
- Other 2021 Fires
- USFS R5 Fire Perimeters



1:160,000 - SA Red IMT - 9/5/2021 2137  
Acres from IR  
North American 1983 Datum, Lat/Long Grid

9/5/2021  
9:49 PM

Type	Label	Lat WGS84	Long WGS84	Elev Feet
Dip Site	Antelope Dip	41° 28.282' N	121° 58.922' W	6,756
Dip Site	Bishop Dip	41° 31.090' N	121° 57.920' W	6,714
Dip Site	Butte Creek Dip	41° 28.402' N	122° 00.000' W	6,352
Dip Site	Duck Dip	41° 31.060' N	121° 59.520' W	6,513
Dip Site	Fish Dip	41° 34.264' N	121° 56.632' W	4,924
Dip Site	Jones Dip	41° 38.690' N	122° 00.240' W	4,664
Dip Site	Medicine Lake Dip	41° 34.944' N	121° 36.545' W	6,662
Dip Site	Pumice Dip	41° 34.250' N	121° 42.440' W	6,424
Drop Point	1	41° 40.663' N	122° 04.144' W	4,889
Drop Point	10	41° 37.374' N	121° 59.429' W	4,660
Drop Point	100	41° 24.012' N	122° 03.044' W	5,025
Drop Point	101	41° 25.656' N	121° 59.108' W	5,241
Drop Point	102	41° 27.724' N	121° 57.440' W	6,578
Drop Point	103	41° 27.008' N	121° 55.538' W	5,754
Drop Point	12	41° 38.700' N	121° 58.160' W	4,649
Drop Point	120	41° 29.399' N	122° 02.056' W	5,768
Drop Point	15	41° 34.484' N	121° 55.288' W	4,848
Drop Point	23	41° 36.178' N	121° 43.673' W	5,623
Drop Point	25	41° 36.831' N	121° 50.125' W	5,039
Drop Point	27	41° 37.599' N	121° 46.876' W	5,186
Drop Point	28	41° 31.956' N	121° 44.081' W	5,766
Drop Point	30	41° 37.934' N	121° 44.003' W	5,298
Drop Point	38	41° 35.178' N	121° 36.946' W	6,719
Drop Point	40	41° 34.540' N	121° 35.106' W	6,721
Drop Point	48	41° 34.145' N	121° 48.146' W	5,918
Drop Point	49	41° 32.543' N	121° 45.815' W	6,357
Drop Point	50	41° 33.973' N	121° 49.918' W	5,818
Drop Point	51	41° 31.202' N	121° 44.430' W	5,640
Drop Point	52	41° 31.900' N	121° 47.303' W	5,922
Drop Point	53	41° 29.913' N	121° 45.948' W	5,370
Drop Point	54	41° 31.477' N	121° 48.293' W	5,855
Drop Point	55	41° 26.263' N	121° 52.506' W	4,923
Drop Point	56	41° 30.107' N	121° 48.142' W	5,595
Drop Point	57	41° 29.904' N	121° 49.665' W	5,489
Drop Point	58	41° 29.950' N	121° 51.732' W	5,601
Drop Point	59	41° 29.734' N	121° 53.028' W	5,459
Drop Point	60	41° 30.039' N	121° 53.564' W	5,552
Drop Point	61	41° 31.316' N	121° 54.109' W	5,401
Drop Point	62	41° 29.628' N	121° 54.715' W	5,447
Drop Point	63	41° 26.823' N	121° 52.903' W	4,910
Drop Point	64	41° 24.606' N	121° 53.949' W	4,704
Drop Point	65	41° 29.276' N	121° 56.681' W	5,555
Drop Point	66	41° 24.800' N	121° 56.028' W	4,857
Drop Point	67	41° 25.611' N	121° 57.983' W	5,135
Drop Point	68	41° 25.242' N	122° 00.621' W	5,190
Drop Point	69	41° 24.119' N	122° 01.292' W	4,788
Drop Point	70	41° 30.365' N	121° 55.931' W	6,371
Drop Point	71	41° 25.823' N	122° 04.470' W	5,662
Drop Point	72	41° 31.444' N	121° 56.259' W	6,036
Drop Point	73	41° 29.709' N	122° 03.430' W	5,716
Drop Point	74	41° 31.264' N	122° 03.148' W	5,377
Drop Point	75	41° 31.774' N	121° 59.230' W	7,022
Drop Point	76	41° 31.025' N	122° 06.265' W	6,110
Drop Point	77	41° 32.501' N	122° 02.888' W	5,114
Drop Point	78	41° 33.476' N	122° 04.266' W	5,035
Drop Point	79	41° 34.182' N	122° 07.932' W	5,775
Drop Point	80	41° 33.826' N	121° 59.535' W	6,436
Drop Point	81	41° 34.432' N	122° 01.867' W	5,837
Drop Point	82	41° 34.510' N	121° 59.197' W	5,570
Drop Point	83	41° 34.158' N	122° 00.695' W	6,190
Drop Point	84	41° 34.715' N	121° 59.127' W	5,369
Drop Point	86	41° 35.357' N	121° 59.050' W	5,148
Drop Point	96	41° 36.447' N	122° 04.201' W	4,888
Drop Point	98	41° 35.085' N	122° 11.542' W	4,811
Drop Point	DP-104	41° 27.183' N	121° 56.570' W	6,428
Helibase	Siskiyou County Airport	41° 46.744' N	122° 28.126' W	2,645
Helispot	10	41° 29.957' N	121° 50.096' W	5,526
Helispot	102	41° 27.600' N	121° 57.186' W	6,559
Helispot	2	41° 36.730' N	121° 59.491' W	4,658
Helispot	4	41° 30.387' N	121° 54.053' W	5,646
Helispot	48	41° 34.145' N	121° 48.146' W	5,918
Helispot	52	41° 31.900' N	121° 47.303' W	5,922
Helispot	54	41° 31.477' N	121° 28.293' W	6,635
Helispot	6	41° 41.085' N	121° 53.601' W	4,555
Helispot	63	41° 26.823' N	121° 52.903' W	4,910
Helispot	7	41° 34.138' N	121° 42.480' W	6,409
Helispot	8	41° 36.262' N	121° 45.866' W	5,535
Helispot	E1	41° 38.098' N	121° 44.765' W	5,265
Helispot	E2	41° 34.099' N	121° 42.430' W	6,407
Mobile Weather Unit		41° 20.779' N	121° 53.466' W	6,493
Repeater		41° 47.700' N	122° 09.328' W	7,775
Repeater	Cmd 10	41° 20.800' N	121° 53.468' W	6,494
Repeater	Cmd 7	41° 40.046' N	121° 58.465' W	5,829
Repeater	Cmd 8	41° 32.180' N	122° 06.023' W	7,454
Repeater	Cmd 9	41° 34.732' N	121° 39.500' W	7,289
Repeater	L 2	40° 40.053' N	121° 58.500' W	1,975
Safety Zone		41° 30.499' N	121° 49.113' W	5,822
Safety Zone		41° 31.950' N	122° 01.350' W	5,556
Safety Zone		41° 27.072' N	121° 52.614' W	4,912
Safety Zone		41° 33.824' N	121° 59.563' W	6,437
Safety Zone		41° 35.208' N	121° 36.954' W	6,724