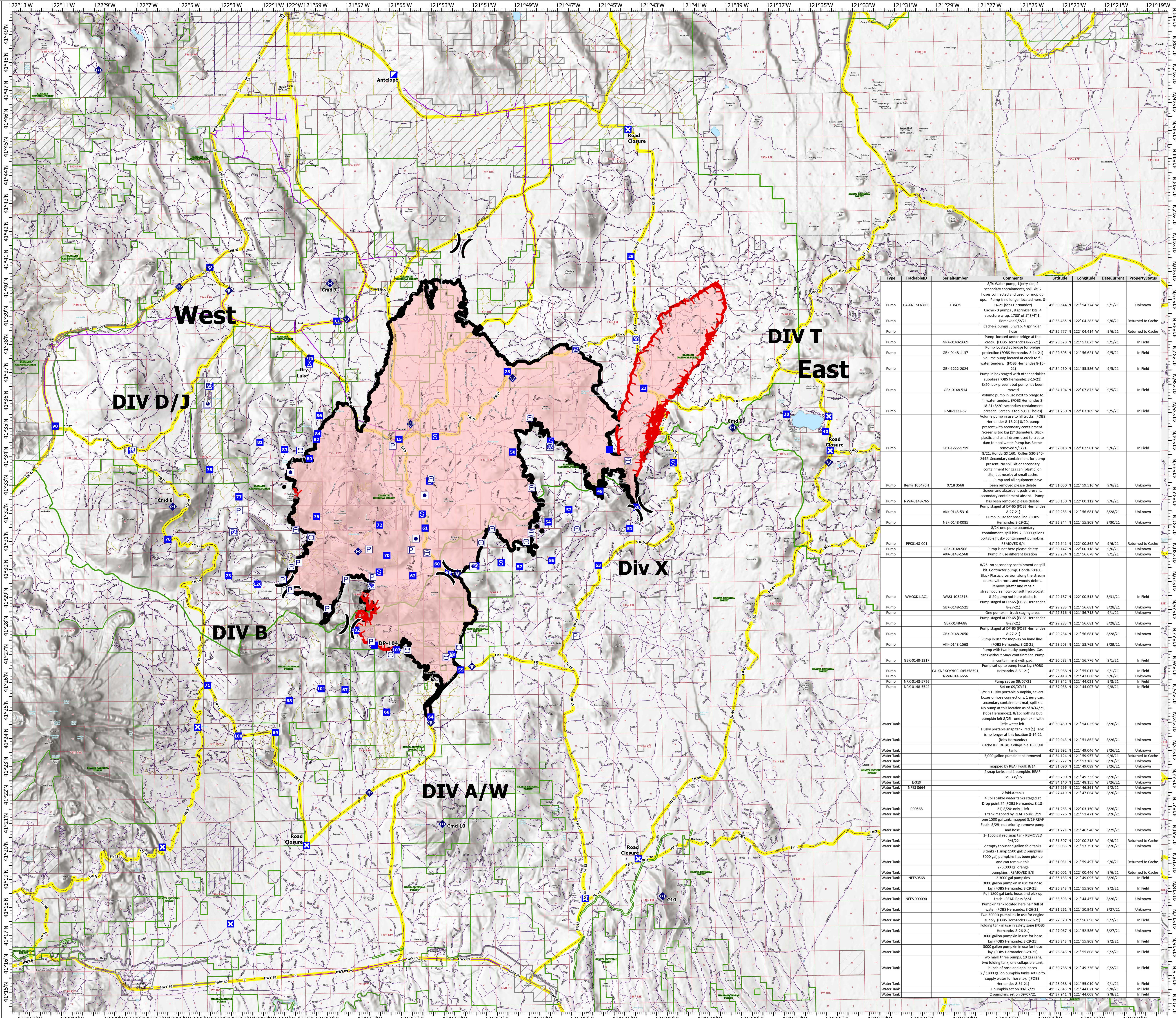


# ACCOUNTABLE PROPERTY

Antelope  
CAKNF-006454  
9/8/2021

79,702 acres at 9/7/2021 2200

- Other Property
- Pump
- Water Tank
- Division Break
- Incident Command Post
- Drop Point
- Closure
- Camp
- Staging Area
- Internet Access
- Repeater
- Fire Edge
- Contained Line
- Wildfire Daily Fire Perimeter
- State or Territory
- County or Equivalent
- NPS
- Forest Service
- Private
- Powerlines
- State Highway/County Road/Interstate
- Forest Road
- Private/Other Road
- USFS Roads
- Main Roads



Type	TrackableID	SerialNumber	Comments	Latitude	Longitude	DateCurrent	PropertyStatus
Pump	CAKNF SQ/VICC	LL8475	8/9: Water pump, 1 Jerry can, 2 secondary containment, spill kit, 2 hoses connected and used for mop up ops. Pump is no longer located here. 8-14-21 (Fobs Hernandez)	41°30'54.4" N	121°54'77.4" W	9/3/21	Unknown
Pump			Cache - 3 pumps, 3 sprinker kits, 4 structure hoses, 1000 of 2.5/4.1. Removed 9/2/21	41°36'46.5" N	122°04'28.3" W	9/6/21	Returned to Cache
Pump			Cache-2 pumps, 3 wrap, 4 sprinker, hose	41°35'77.7" N	122°04'42.4" W	9/6/21	Returned to Cache
Pump	NRK-0148-1669		Pump located under bridge at the creek. (Fobs Hernandez 8-27-21)	41°29'52.8" N	121°57'87.3" W	9/3/21	In Field
Pump	GBK-0148-1137		Pump located at bridge for bridge protection (Fobs Hernandez 8-14-21)	41°29'60.5" N	121°56'62.1" W	9/5/21	In Field
Pump	GBK-1222-2024		Volume pump located at creek to fill water tenders. (Fobs Hernandez 8-15-21)	41°34'25.0" N	121°55'58.0" W	9/5/21	In Field
Pump	GBK-0148-514		Pump in box staged with other sprinker supplies (Fobs Hernandez 8-29-21) 8/20: box present but pump has been moved	41°34'19.4" N	122°07'87.3" W	9/5/21	In Field
Pump	RMK-1222-57		Volume pump in use to fill trucks. (Fobs Hernandez 8-18-21) 8/20: secondary containment present. Screen too big (11" holes)	41°31'26.0" N	122°03'18.9" W	9/5/21	In Field
Pump	GBK-1222-1719		Volume pump in use to fill trucks. (Fobs Hernandez 8-18-21) 8/20: secondary containment present. Screen too big (11" holes). Black plastic and small drums used to create dam to pool water. Pump has been removed 9/1/21	41°31'02.1" N	122°02'90.1" W	9/6/21	In Field
Pump	Item# 106470H	0718 3568	8/21: Honda GX160. Cullen 530-340-2442. Secondary containment for pump present. No spill kit or secondary containment for gas can (plastic) on site, but nearby at small cache. Pump and all equipment have been removed please delete	41°31'05.0" N	121°59'10.6" W	9/6/21	Unknown
Pump	NWC-0148-765		Screen and absorbent pads present, secondary containment absent. Pump has been removed please delete	41°30'15.0" N	122°00'11.2" W	9/6/21	Unknown
Pump	AKK-0148-5316		Pump staged at DP-65 (Fobs Hernandez 8-27-21)	41°29'28.3" N	121°56'68.1" W	8/28/21	Unknown
Pump	NEK-0148-0085		Pump in use for hose line. (Fobs Hernandez 8-29-21)	41°26'84.4" N	121°55'80.8" W	8/30/21	Unknown
Pump	FFK0148-001		8/25: one pump secondary containment, spill kits, 2, 3000 gallons portable husky containment pumps. REMOVED 8/24	41°25'54.1" N	122°00'86.2" W	9/6/21	Returned to Cache
Pump	GBK-0148-566		Pump in use for hose line. (Fobs Hernandez 8-29-21)	41°25'14.7" N	122°00'11.8" W	9/6/21	Unknown
Pump	AKK-0148-1568		Pump in use different location	41°25'28.4" N	121°56'67.8" W	9/3/21	Unknown
Pump	WHQXJAC1	WASI-1034816	8/25: no secondary containment or spill kit. Contractor pump. Honda GX160. Black Plastic diversion along the stream course with rocks and woody debris. Remove plastic and repair streamcourse flow-consult hydrologist	41°29'18.7" N	122°00'51.3" W	8/31/21	In Field
Pump	GBK-0148-1521		Pump staged at DP-65 (Fobs Hernandez 8-27-21)	41°29'28.3" N	121°56'68.1" W	8/28/21	Unknown
Pump	GBK-0148-688		One pump in use staging area	41°27'31.6" N	121°56'71.8" W	9/3/21	Unknown
Pump	GBK-0148-2050		Pump staged at DP-65 (Fobs Hernandez 8-27-21)	41°29'28.3" N	121°56'68.1" W	8/28/21	Unknown
Pump	AKK-0148-1568		Pump in use for mop-up on hand line. (Fobs Hernandez 8-29-21)	41°28'28.4" N	121°56'68.1" W	8/29/21	Unknown
Pump	GBK-0148-1217		Pump with two husky pumps. Gas cans without May containment. Pump in containment with pad.	41°30'58.3" N	121°56'77.6" W	9/3/21	In Field
Pump	CAKNF SQ/VICC	84338891	Pump set up to pump hose lay. (Fobs Hernandez 8-31-21)	41°26'98.8" N	121°55'02.7" W	9/3/21	In Field
Pump	NRK-0148-5726	NRK-0148-656	Set on 09/07/21	41°27'41.8" N	121°57'08.8" W	9/6/21	Unknown
Pump	NRK-0148-5542		Pump set on 09/07/21	41°37'84.2" N	121°44'02.1" W	9/6/21	In Field
Water Tank			8/9: 1 husky portable pumpkins, several hoses of hose connection, 1 Jerry can, secondary containment mat, spill kit. No pump at this location as of 8/14/21 (Fobs Hernandez) 8/16: nothing but pumpkins left 8/25: one pumpkins with little water left.	41°30'43.0" N	121°54'02.5" W	8/26/21	Unknown
Water Tank			Husky portable snap tank, red (1) tank is no longer at this location 8-14-21 (Fobs Hernandez)	41°29'94.3" N	121°51'86.2" W	8/26/21	Unknown
Water Tank			Cache ID: 10648. Collapsible 1800 gal tank.	41°32'69.2" N	121°49'04.6" W	8/26/21	Unknown
Water Tank			3,000 gallon pumpkin tank removed	41°34'12.4" N	121°59'55.7" W	9/6/21	Returned to Cache
Water Tank			mapped by REAF Fouk 8/14	41°31'09.0" N	121°49'08.9" W	8/25/21	Unknown
Water Tank			2 snap tanks and 1 pumpkin-REAF Fouk 8/15	41°30'79.0" N	121°49'33.1" W	8/26/21	Unknown
Water Tank	E-319			41°34'14.0" N	121°48'15.5" W	8/26/21	Unknown
Water Tank	NFES 0664			41°37'59.6" N	121°46'86.1" W	9/3/21	Unknown
Water Tank				41°27'41.9" N	121°47'06.4" W	8/26/21	Unknown
Water Tank			2 fold tanks	41°31'22.1" N	121°46'94.0" W	8/29/21	Unknown
Water Tank	000548		4 collapsible water tanks staged at Drop point 74 (Fobs Hernandez 8-18-21) 8/20: only 1 left.	41°31'26.3" N	121°51'15.0" W	8/26/21	Unknown
Water Tank			1 tank mapped by REAF Fouk 8/19	41°30'77.0" N	121°51'47.1" W	8/26/21	Unknown
Water Tank			one 1500 gal tank, mapped 8/19 REAF Fouk. 8/29- not priority, remove pump and hose.	41°31'22.1" N	121°46'94.0" W	8/29/21	Unknown
Water Tank			1- 1500 gal red snap tank REMOVED 9/4/22	41°31'30.7" N	122°00'21.8" W	9/6/21	Returned to Cache
Water Tank			2 empty thousand gallon fold tanks	41°31'06.3" N	121°53'79.1" W	8/26/21	Unknown
Water Tank			3 tanks (1 snap 1500 gal- 2 pumpkins 3000 gal) pumpkins has been pick up and can remove this	41°31'03.1" N	121°59'49.7" W	9/6/21	Returned to Cache
Water Tank			2- 3,000 gal orange pumpkins. REMOVED 9/3	41°30'00.1" N	122°00'44.6" W	9/6/21	Returned to Cache
Water Tank	NFES066		3000 gal pumpkins	41°35'18.3" N	121°49'09.5" W	8/26/21	In Field
Water Tank			3000 gallon pumpkin in use for hose lay (Fobs Hernandez 8-29-21)	41°26'84.3" N	121°55'80.8" W	9/2/21	In Field
Water Tank			Pull 1200 gal tank, hose, and pick up trash. -REAF Ross 8/24	41°33'59.9" N	121°44'45.7" W	8/26/21	Unknown
Water Tank	NFES 00090		Pumpkin tank located here half full of water. (Fobs Hernandez 8-30-21)	41°31'26.1" N	121°50'94.3" W	8/27/21	Unknown
Water Tank			Two 3000 g pumpkins in use for engine supply. (Fobs Hernandez 8-29-21)	41°27'32.0" N	121°56'69.8" W	9/2/21	In Field
Water Tank			Folding tank in use to safety zone (Fobs Hernandez 8-29-21)	41°27'06.7" N	121°52'58.6" W	8/27/21	Unknown
Water Tank			3000 gallon pumpkin in use for hose lay (Fobs Hernandez 8-29-21)	41°26'84.3" N	121°55'80.8" W	9/2/21	In Field
Water Tank			3000 gallon pumpkin in use for hose lay (Fobs Hernandez 8-29-21)	41°26'84.3" N	121°55'80.8" W	9/2/21	In Field
Water Tank			Two mark three pumps, 10 gas cans, two folding tank, one collapsible tank. Bunch of hose and appliances	41°30'78.8" N	121°49'33.6" W	9/2/21	In Field
Water Tank			7/ 1800 gallon pumpkin tanks set up to supply water for hose lay. (Fobs Hernandez 8-31-21)	41°26'98.8" N	121°55'01.9" W	9/3/21	In Field
Water Tank			1 pumpkin set on 09/07/21	41°37'84.2" N	121°44'02.1" W	9/6/21	In Field
Water Tank			2 pumpkins set on 09/07/21	41°37'84.2" N	121°44'02.1" W	9/6/21	In Field

