

## IAP

Antelope  
CAKNF-006454  
9/9/2021

91.477 acres at 9/8/21 1248

1:225,000 - SA Red IMT - 9/8/2021 234  
North American 1983 Datum, LatLong Grid

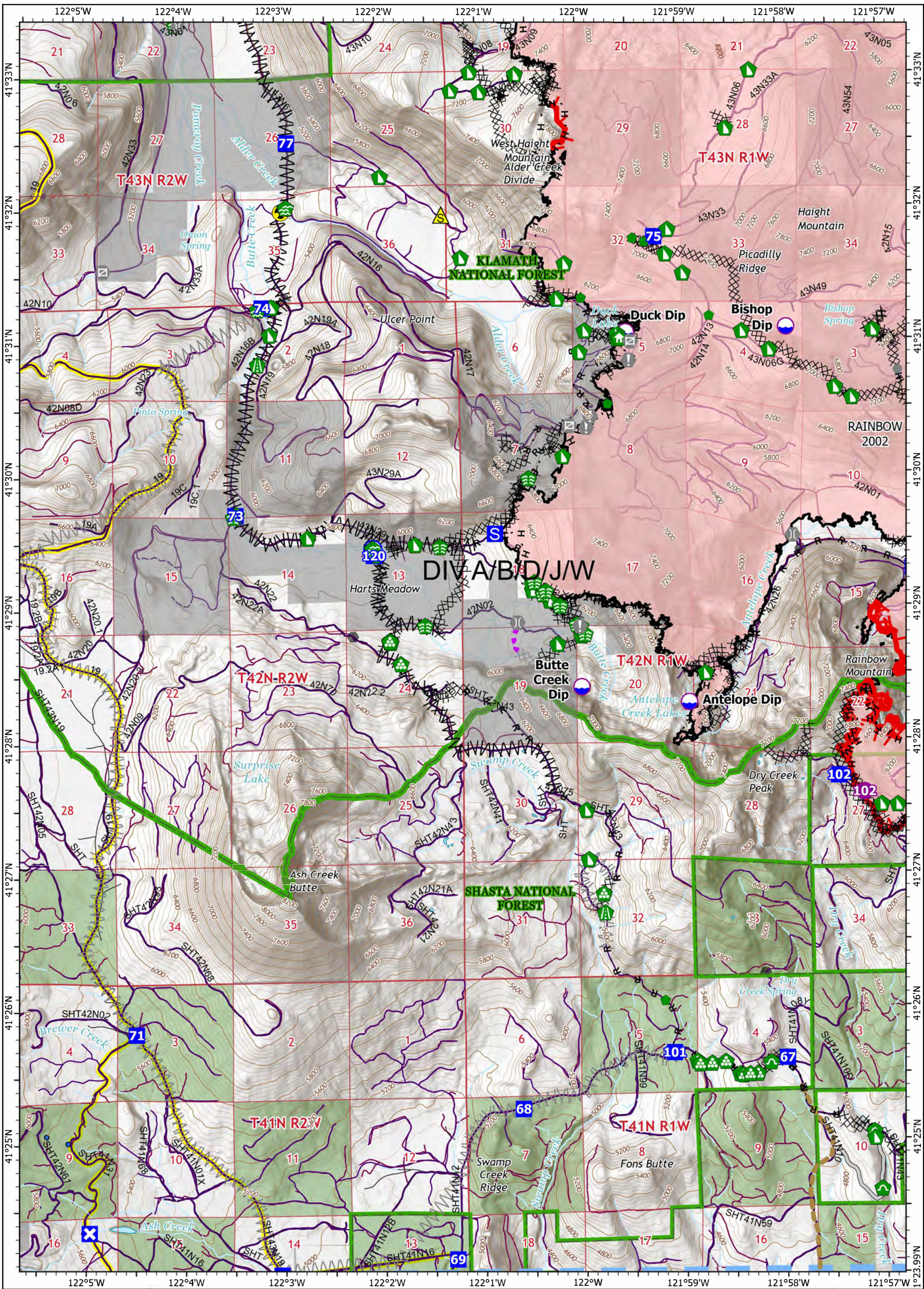
<ul style="list-style-type: none"> <li><span style="color: blue;">●</span> Dip Site</li> <li><span style="color: purple;">●</span> Helispot</li> <li><span style="border-bottom: 1px dashed black; width: 10px; display: inline-block;"></span> Division Break</li> <li><span style="color: blue;">■</span> Incident Command Post</li> <li><span style="color: blue;">■</span> Drop Point</li> <li><span style="color: blue;">X</span> Closure</li> <li><span style="color: blue;">▲</span> Camp</li> <li><span style="color: blue;">S</span> Staging Area</li> </ul>	<ul style="list-style-type: none"> <li><span style="color: red;">●</span> Lookout</li> <li><span style="color: red;">●</span> Hot Spot - Spot Fire</li> <li><span style="color: red;">X</span> Fire Origin</li> <li><span style="color: red;">●</span> Value at Risk</li> <li><span style="color: red;">●</span> Other</li> <li><span style="color: red;">●</span> Landmark</li> <li><span style="color: red;">●</span> Gate</li> <li><span style="color: red;">●</span> Bridge</li> </ul>	<ul style="list-style-type: none"> <li><span style="color: green;">●</span> Water Development or Draft Site</li> <li><span style="color: green;">●</span> Structure Wrap</li> <li><span style="color: green;">●</span> Stream Crossing</li> <li><span style="color: green;">●</span> Road Repair</li> <li><span style="color: green;">●</span> Repair Point</li> <li><span style="color: green;">●</span> Landing or Log Deck</li> <li><span style="color: green;">●</span> Hazard Tree</li> </ul>	<ul style="list-style-type: none"> <li><span style="color: green;">●</span> Fence - Cut/Damaged</li> <li><span style="color: green;">●</span> Dozer Push</li> <li><span style="color: green;">●</span> Culvert</li> <li><span style="color: green;">●</span> Clean Up Area</li> <li><span style="color: green;">●</span> Mobile Weather Unit</li> <li><span style="color: green;">●</span> Internet Access</li> <li><span style="color: green;">●</span> Repeater</li> <li><span style="color: green;">●</span> Safety Zone</li> </ul>	<ul style="list-style-type: none"> <li><span style="color: yellow;">●</span> Hazard</li> <li><span style="color: blue;">●</span> Water Source</li> <li><span style="border: 1px solid red; width: 10px; height: 10px; display: inline-block;"></span> Wildfire Daily Fire Perimeter</li> <li><span style="border: 1px solid red; width: 10px; height: 10px; display: inline-block;"></span> 20210906 1630 Heat Perimeter</li> <li><span style="border: 1px solid red; width: 10px; height: 10px; display: inline-block;"></span> New Growth</li> </ul>
---	--	--	--	--

Miles

0 1 2

Kilometers

0 1 2



**IAP**  
 Antelope  
 CAKNF-006454  
 9/9/2021



91.477 acres at 9/8/21 1248

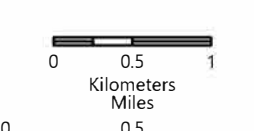
Page 1 of 7


1:48,000 - SA Red IMT - 9/8/2021 2337

North American 1983 Datum, Lat/Long Grid

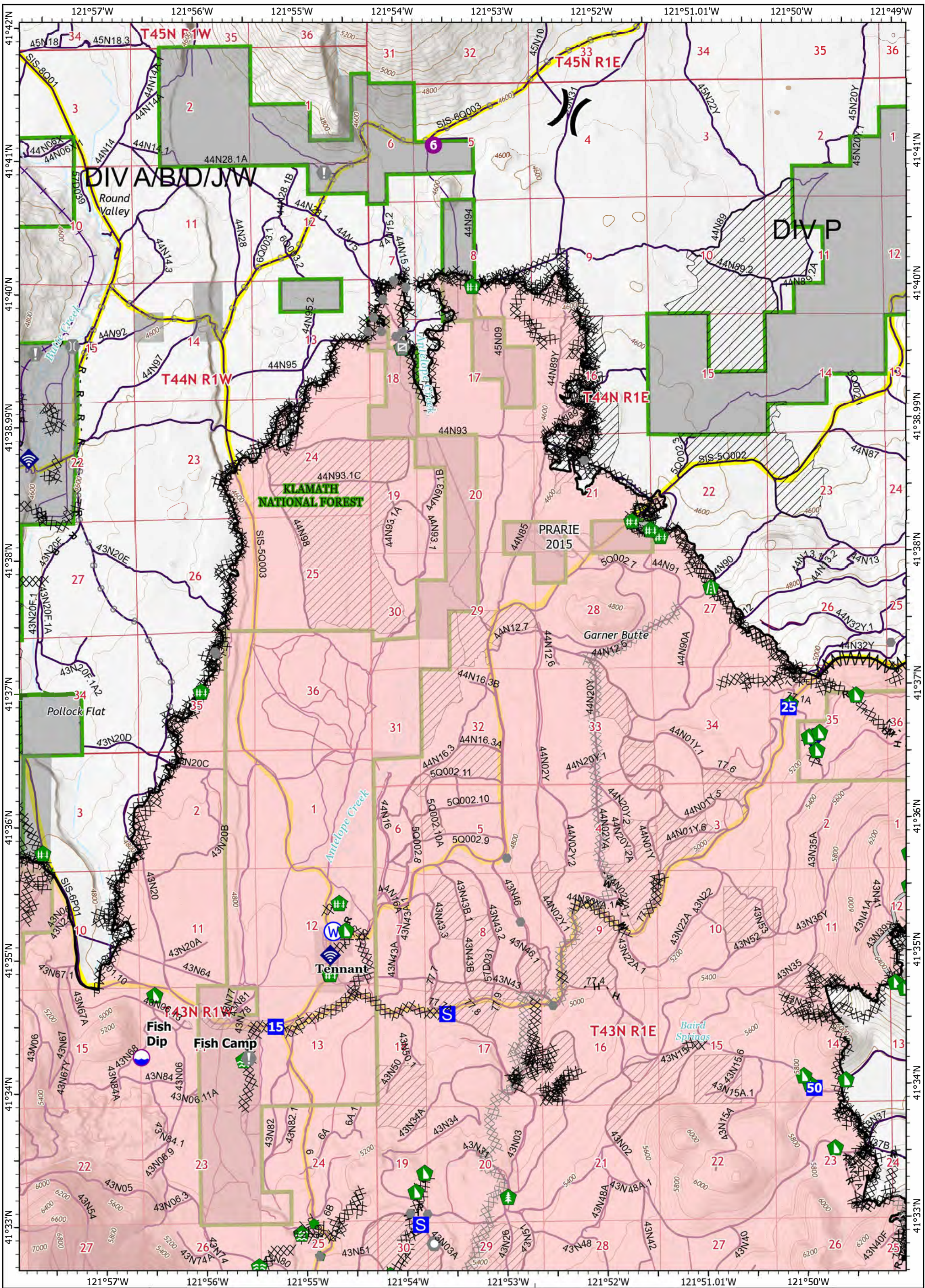
Dip Site	Water Development or Draft Site	Safety Zone	Planned Hand Line
Hellspot	Structure Wrap	Hazard	Access or Improved Road
Drop Point	Stream Crossing	Water Source	Other
Closure	Road Repair	Completed Dozer Line	Road Repair
Staging Area	Repair Point	Completed Fuel Break	Route
Value at Risk	Landing or Log Deck	Completed Hand Line	Temporary Flight Restriction
Other	Dozer Push	Completed Road as Line	Fire Edge
Gate	Culvert	Planned Dozer Line	Contained Line
Bridge	Clean Up Area	Planned Fuel Break	Wildfire Daily Fire Perimeter









# IAP

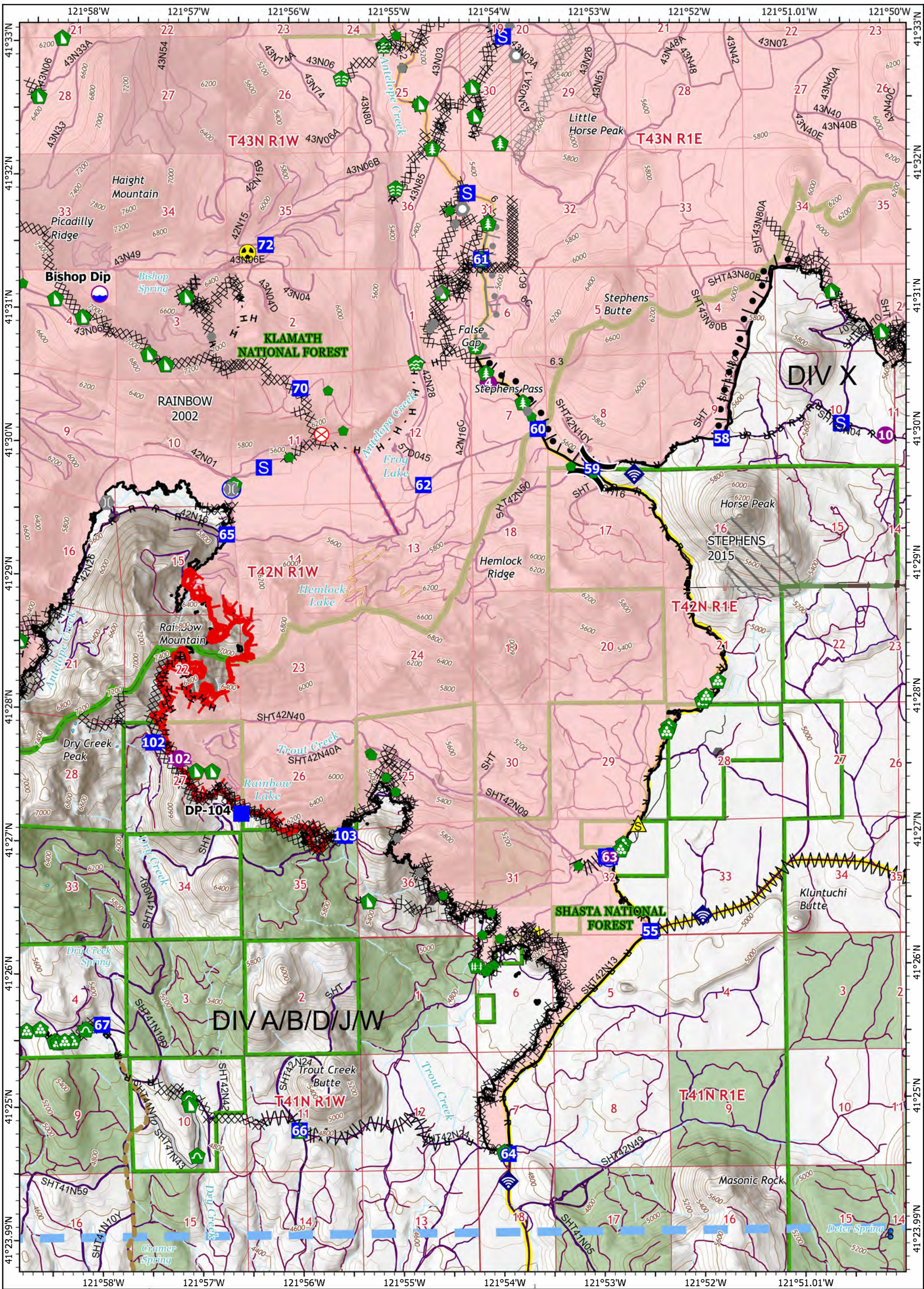
Antelope  
CAKNF-006454  
9/9/2021

91.477 acres at 9/8/21 1248  
Page 3 of 7

1:48,000 - SA Red IMT - 9/8/2021 2332  
North American 1983 Datum, Lat/Long Grid

- |  |   |   |   |
|--|---|---|---|
| <ul style="list-style-type: none"> <li> Dip Site</li> <li> Hellspot</li> <li> Division Break</li> <li> Drop Point</li> <li> Staging Area</li> <li> Value at Risk</li> <li> Other</li> <li> Landmark</li> </ul> | <ul style="list-style-type: none"> <li> Gate</li> <li> Bridge</li> <li> Water Development or Draft Site</li> <li> Stream Crossing</li> <li> Road Repair</li> <li> Repair Point</li> <li> Hazard Tree</li> <li> Fence - Cut/Damaged</li> </ul> | <ul style="list-style-type: none"> <li> Dozer Push</li> <li> Internet Access</li> <li> Water Source</li> <li> Completed Dozer Line</li> <li> Completed Fuel Break</li> <li> Completed Hand Line</li> <li> Completed Mixed Construction Line</li> <li> Completed Road as Line</li> </ul> | <ul style="list-style-type: none"> <li> Planned Burnout</li> <li> Planned Dozer Line</li> <li> Planned Secondary Line</li> <li> Access or Improved Road</li> <li> Other</li> <li> Contained Line</li> <li> Wildfire Daily Fire Perimeter</li> <li> Private</li> </ul> |
|--|---|---|---|





**IAP**  
**Antelope**  
**CAKNF-006454**  
**9/9/2021**

91.477 acres at 9/8/21 1248

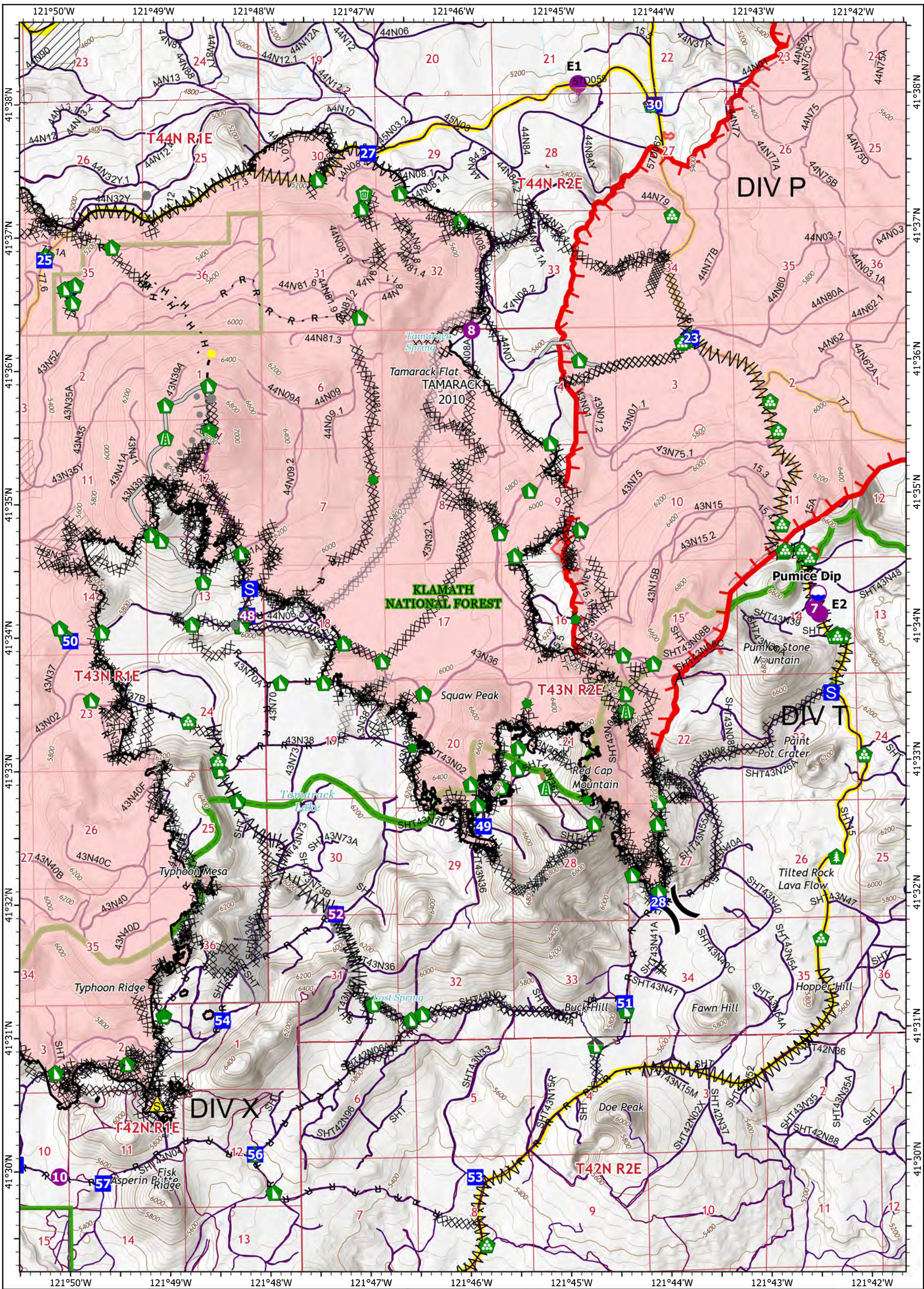
Page 4 of 7

1:48,000 - SA Red IMT - 9/8/2021 2329

North American 1983 Datum, Lat/Long Grid

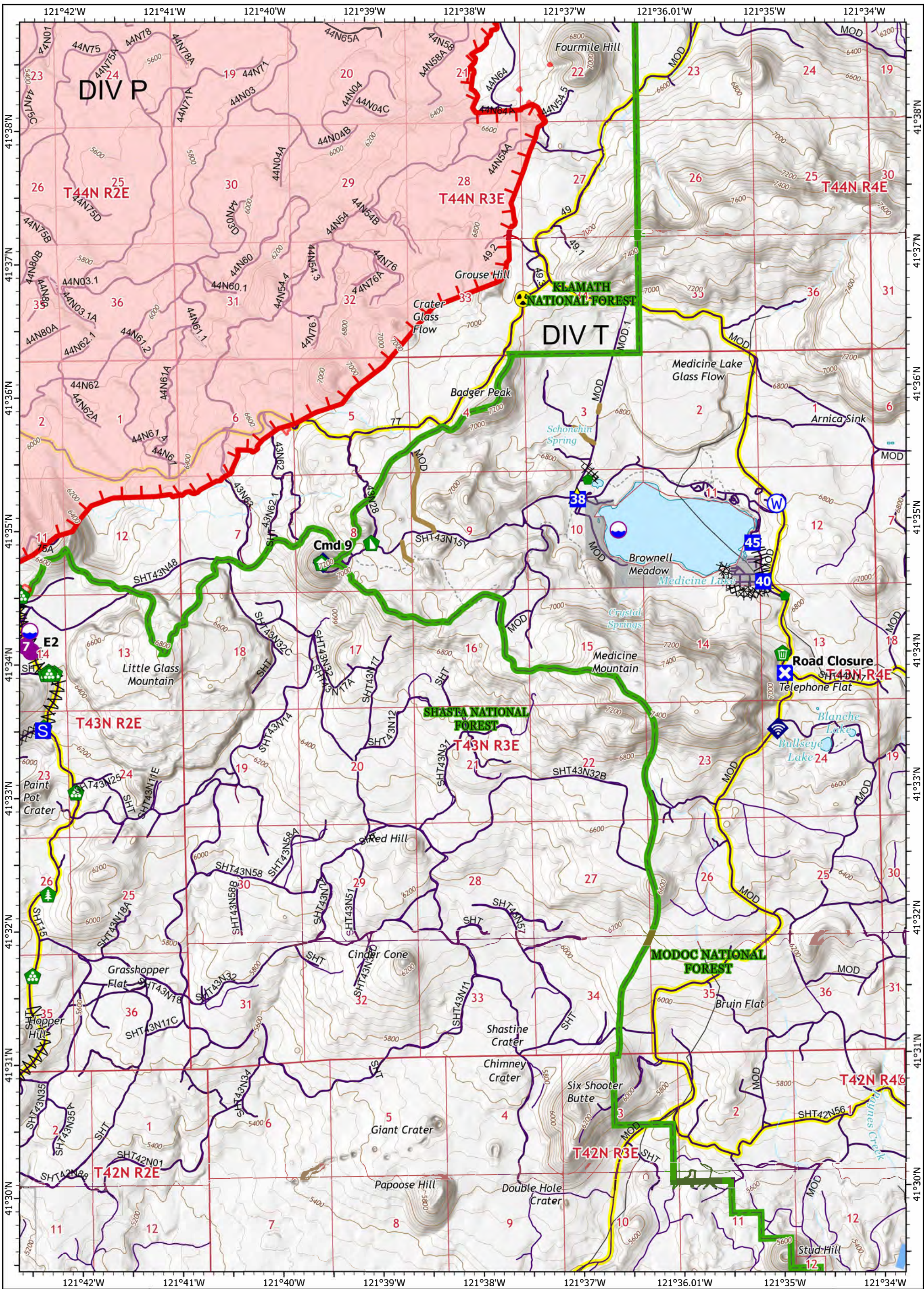
- |                |                                 |                        |                              |
|----------------|---------------------------------|------------------------|------------------------------|
| Dip Site       | Water Development or Draft Site | Internet Access        | Planned Burnout              |
| Hellsipit      | Stream Crossing                 | Safety Zone            | Planned Dozer Line           |
| Division Break | Repair Point                    | Hazard                 | Access or Improved Road      |
| Drop Point     | Landing or Log Deck             | Water Source           | Highlighted Feature          |
| Staging Area   | Hazard Tree                     | Completed Burnout      | Other                        |
| Fire Origin    | Fence - Cut/Damaged             | Completed Dozer Line   | Road Repair                  |
| Other          | Dozer Push                      | Completed Fuel Break   | Retardant Drop               |
| Landmark       | Culvert                         | Completed Hand Line    | Temporary Flight Restriction |
| Bridge         | Clean Up Area                   | Completed Road as Line | Fire Edge                    |

Kilometers
Miles



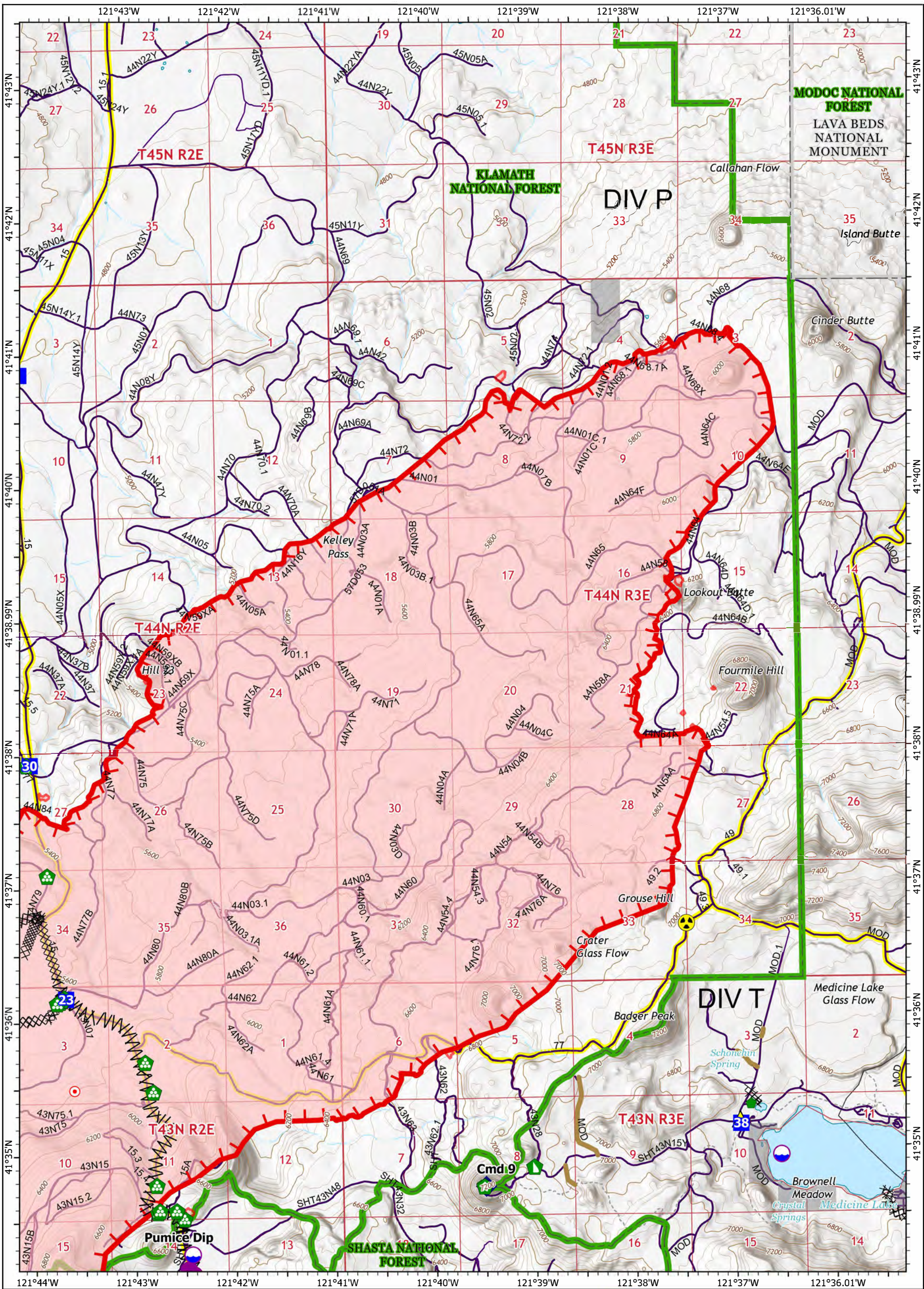
**IAP**  
 Antelope  
 CAKNF-006454  
 9/9/2021  
 91.477 acres at 9/8/21 1248  
 Page 5 of 7  
 1:48,000 - SA Red IMT - 9/8/2021 2327  
 North American 1983 Datum, Lat/Long Grid

<ul style="list-style-type: none"> <li> Dip Site</li> <li> Hellspot</li> <li> Division Break</li> <li> Drop Point</li> <li> Staging Area</li> <li> Hot Spot - Spot Fire</li> <li> Other</li> <li> Road Repair</li> </ul>	<ul style="list-style-type: none"> <li> Repair Point</li> <li> Landing or Log Deck</li> <li> Hazard Tree</li> <li> Dozer Push</li> <li> Clean Up Area</li> <li> Internet Access</li> <li> Safety Zone</li> <li> Completed Dozer Line</li> </ul>	<ul style="list-style-type: none"> <li> Completed Fuel Break</li> <li> Completed Hand Line</li> <li> Completed Mixed Construction Line</li> <li> Completed Road as Line</li> <li> Planned Burnout</li> <li> Planned Road as Line</li> <li> Access or Improved Road</li> </ul>	<ul style="list-style-type: none"> <li> Highlighted Feature</li> <li> Other</li> <li> Road Repair</li> <li> Retardant Drop</li> <li> Fire Edge</li> <li> Contained Line</li> <li> Wildfire Daily Fire Perimeter</li> <li> Private</li> </ul>
--	---	---	--



**IAP**  
 Antelope  
 CAKNF-006454  
 9/9/2021  
 91.477 acres at 9/8/21 1248  
 Page 6 of 7  
 1:48,000 - SA Red IMT - 9/8/2021 2323  
 North American 1983 Datum, Lat/Long Grid

<ul style="list-style-type: none"> <li> Dip Site</li> <li> Helispot</li> <li> Drop Point</li> <li> Closure</li> <li> Staging Area</li> <li> Structure Wrap</li> <li> Repair Point</li> <li> Landing or Log Deck</li> </ul>	<ul style="list-style-type: none"> <li> Hazard Tree</li> <li> Dozer Push</li> <li> Clean Up Area</li> <li> Internet Access</li> <li> Repeater</li> <li> Safety Zone</li> <li> Hazard</li> <li> Water Source</li> </ul>	<ul style="list-style-type: none"> <li> Completed Dozer Line</li> <li> Completed Fuel Break</li> <li> Completed Hand Line</li> <li> Planned Hand Line</li> <li> Repair Line</li> <li> Temporary Flight Restriction</li> <li> Fire Edge</li> <li> Wildfire Daily Fire Perimeter</li> </ul>	<ul style="list-style-type: none"> <li> Private</li> <li> State or Territory</li> <li> County or Equivalent</li> <li> Forest Service</li> <li> Forest Road</li> <li> Sierra Pacific Roads</li> <li> FlowerPower</li> </ul>
--	--	---	--



**IAP**  
 Antelope  
 CAKNF-006454  
 9/9/2021  
 79,702 acres at 9/8/21 1248  
 Page 7 of 7  
 1:48,000 - SA Red IMT - 9/8/2021 2320  
 North American 1983 Datum, Lat/Long Grid

<ul style="list-style-type: none"> <li> Dip Site</li> <li> Helispot</li> <li> Drop Point</li> <li> Hot Spot - Spot Fire</li> <li> Structure Wrap</li> <li> Repair Point</li> <li> Landing or Log Deck</li> </ul>	<ul style="list-style-type: none"> <li> Dozer Push</li> <li> Clean Up Area</li> <li> Repeater</li> <li> Safety Zone</li> <li> Hazard</li> <li> Completed Dozer Line</li> <li> Completed Fuel Break</li> </ul>	<ul style="list-style-type: none"> <li> Completed Hand Line</li> <li> Planned Hand Line</li> <li> Repair Line</li> <li> Fire Edge</li> <li> Wildfire Daily Fire Perimeter</li> <li> Private</li> <li> State or Territory</li> </ul>	<ul style="list-style-type: none"> <li> County or Equivalent</li> <li> NPS</li> <li> Forest Service</li> <li> Forest Road</li> <li> Sierra Pacific Roads</li> <li> FlowerPower</li> </ul>
--	---	---	---