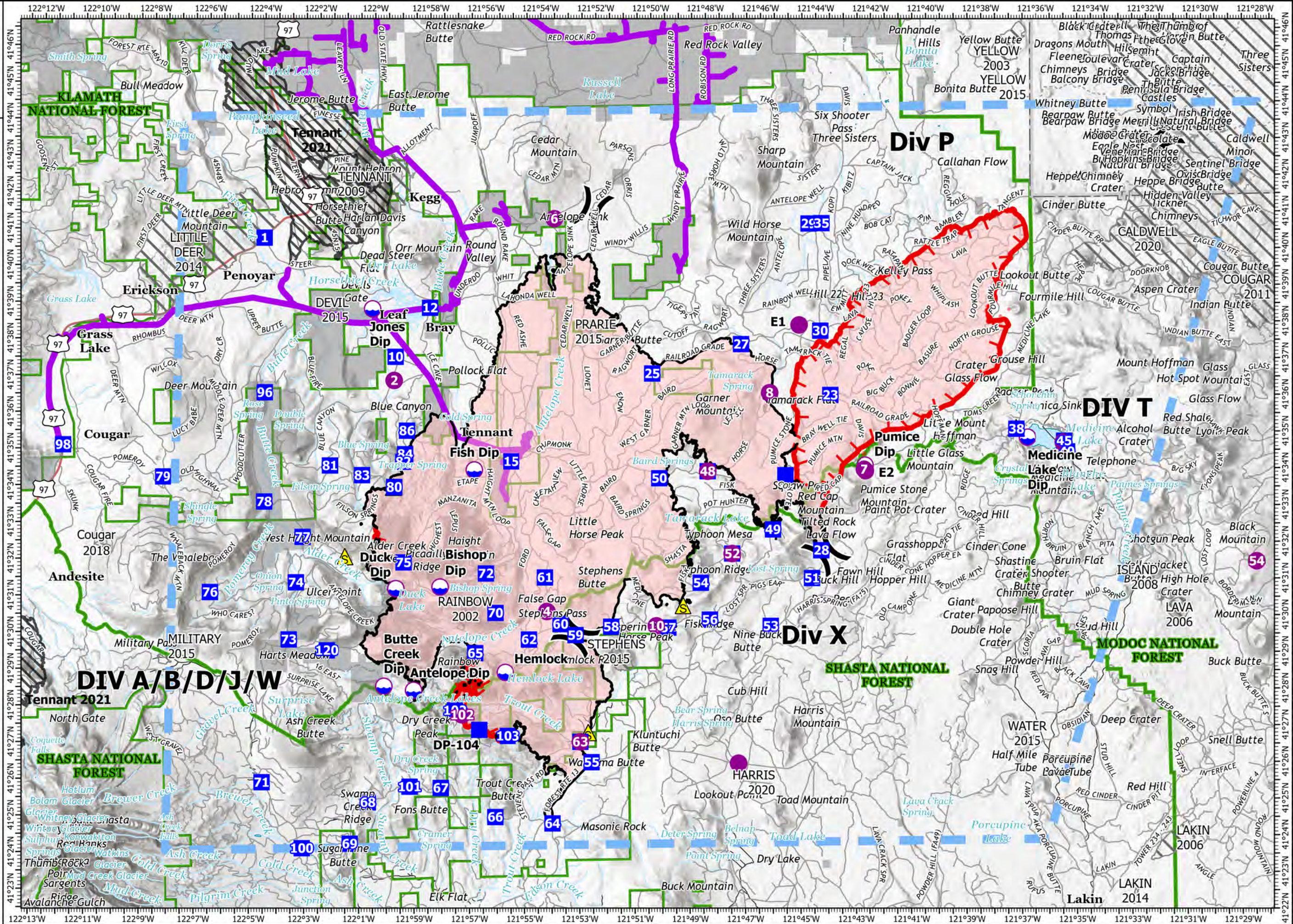


PILOT

Antelope
CAKNF-006454
9/9/2021

91,477 acres at 9/8/21 1248

- Dip Site
- Helispot
- Division Break
- Drop Point
- Safety Zone
- Temporary Flight Restriction
- Fire Edge
- Contained Line
- Wildfire Daily Fire Perimeter
- Powerlines
- Private
- NPS
- Forest Service
- Other 2021 Fires
- USFS R5 Fire Perimeters



Scale: 0 1 2 Miles / 0 1 2 Kilometers

1:175,000 - SA Red IMT - 9/8/2021 2341
Acres from IR

North American 1983 Datum, LatLong Grid



FC Point Type Label		Latitude WGS84 DDM	Longitude WGS84 DDM	FC Point Type Label		Latitude WGS84 DDM	Longitude WGS84 DDM
Drop Point	10	41° 37.375'	-121° 59.430'	Safety Zone		41° 27.072'	-121° 52.615'
Dip Site	Jones Dip	41° 38.690'	-122° 0.241'	Drop Point	73	41° 29.710'	-122° 3.431'
Dip Site	Hemlock	41° 28.740'	-121° 55.601'	Drop Point	74	41° 31.264'	-122° 3.149'
Dip Site	Bishop Dip	41° 31.090'	-121° 57.921'	Drop Point	77	41° 32.501'	-122° 2.888'
Dip Site	Duck Dip	41° 31.060'	-121° 59.521'	Drop Point	78	41° 33.477'	-122° 4.266'
Division Break		41° 41.319'	-121° 52.238'	Drop Point	81	41° 34.432'	-122° 1.867'
Helibase	Siskiyou County Airport	41° 46.744'	-122° 28.126'	Drop Point	101	41° 25.656'	-121° 59.109'
Drop Point	1	41° 40.664'	-122° 4.144'	Drop Point	79	41° 34.182'	-122° 7.933'
Drop Point	62	41° 29.629'	-121° 54.716'	Drop Point	76	41° 31.025'	-122° 6.266'
Drop Point	65	41° 29.276'	-121° 56.681'	Drop Point	55	41° 26.264'	-121° 52.506'
Drop Point	70	41° 30.365'	-121° 55.932'	Helispot	10	41° 29.958'	-121° 50.096'
Helispot	4	41° 30.387'	-121° 54.054'	Drop Point	120	41° 29.400'	-122° 2.056'
Drop Point	12	41° 38.700'	-121° 58.160'	Drop Point	83	41° 34.159'	-122° 0.696'
Drop Point	25	41° 36.831'	-121° 50.126'	Drop Point	38	41° 35.179'	-121° 36.946'
Helispot	6	41° 41.086'	-121° 53.601'	Safety Zone		41° 35.208'	-121° 36.954'
Drop Point	30	41° 37.934'	-121° 44.004'	Dip Site	Medicine Lake Dip	41° 34.944'	-121° 36.546'
Drop Point	61	41° 31.317'	-121° 54.110'	Helispot		41° 34.793'	-121° 35.242'
Drop Point	60	41° 30.040'	-121° 53.565'	Drop Point	53	41° 29.913'	-121° 45.949'
Drop Point	59	41° 29.734'	-121° 53.029'	Drop Point	51	41° 31.202'	-121° 44.431'
Drop Point	58	41° 29.950'	-121° 51.733'	Safety Zone		41° 31.950'	-122° 1.351'
Drop Point	57	41° 29.905'	-121° 49.665'	Drop Point	28	41° 31.956'	-121° 44.082'
Drop Point	56	41° 30.108'	-121° 48.142'	Drop Point	102	41° 27.725'	-121° 57.440'
Safety Zone		41° 30.500'	-121° 49.113'	Drop Point		41° 34.010'	-121° 45.340'
Drop Point	84	41° 34.716'	-121° 59.127'	Drop Point	103	41° 27.008'	-121° 55.539'
Drop Point	86	41° 35.357'	-121° 59.050'	Dip Site	Butte Creek Dip	41° 28.402'	-121° 59.995'
Drop Point	72	41° 31.445'	-121° 56.259'	Division Break		41° 29.734'	-121° 53.029'
Drop Point	82	41° 34.510'	-121° 59.198'	Drop Point	49	41° 32.543'	-121° 45.816'
Drop Point	15	41° 34.484'	-121° 55.289'	Helispot		41° 26.183'	-121° 47.179'
Drop Point	75	41° 31.774'	-121° 59.231'	Dip Site	Fish Dip	41° 34.264'	-121° 56.633'
Drop Point	80	41° 33.826'	-121° 59.535'	Drop Point	DP-104	41° 27.183'	-121° 56.571'
Safety Zone		41° 33.825'	-121° 59.563'	Drop Point	23	41° 36.178'	-121° 43.674'
Drop Point	40	41° 34.540'	-121° 35.107'	Helispot	2	41° 36.730'	-121° 59.492'
Drop Point	54	41° 31.115'	-121° 48.450'	Helispot	48	41° 34.145'	-121° 48.147'
Drop Point	52	41° 31.900'	-121° 47.304'	Helispot	7	41° 34.138'	-121° 42.481'
Drop Point	48	41° 34.145'	-121° 48.147'	Helispot	52	41° 31.900'	-121° 47.304'
Drop Point	50	41° 33.973'	-121° 49.919'	Helispot	54	41° 31.477'	-121° 28.294'
Drop Point	96	41° 36.448'	-122° 4.202'	Helispot	102	41° 27.600'	-121° 57.187'
Drop Point	98	41° 35.086'	-122° 11.543'	Helispot	63	41° 26.823'	-121° 52.904'
Helispot	8	41° 36.263'	-121° 45.866'	Dip Site	Antelope Dip	41° 28.282'	-121° 58.923'
Drop Point	27	41° 37.599'	-121° 46.877'	Dip Site	Pumice Dip	41° 34.250'	-121° 42.441'
Drop Point	64	41° 24.607'	-121° 53.949'	Helispot	E2	41° 34.099'	-121° 42.430'
Drop Point	63	41° 26.823'	-121° 52.903'	Helispot	E1	41° 38.099'	-121° 44.766'
Drop Point	66	41° 24.801'	-121° 56.029'	Division Break		41° 31.897'	-121° 43.916'
Drop Point	67	41° 25.611'	-121° 57.984'	Drop Point	29	41° 40.865'	-121° 44.217'
Drop Point	68	41° 25.243'	-122° 0.622'	Drop Point	45	41° 34.832'	-121° 35.208'
Drop Point	69	41° 24.120'	-122° 1.292'	Division Break		41° 42.959'	-121° 31.549'
Drop Point	100	41° 24.013'	-122° 3.044'	Drop Point	35	41° 40.860'	-121° 44.060'
Drop Point	71	41° 25.824'	-122° 4.471'				