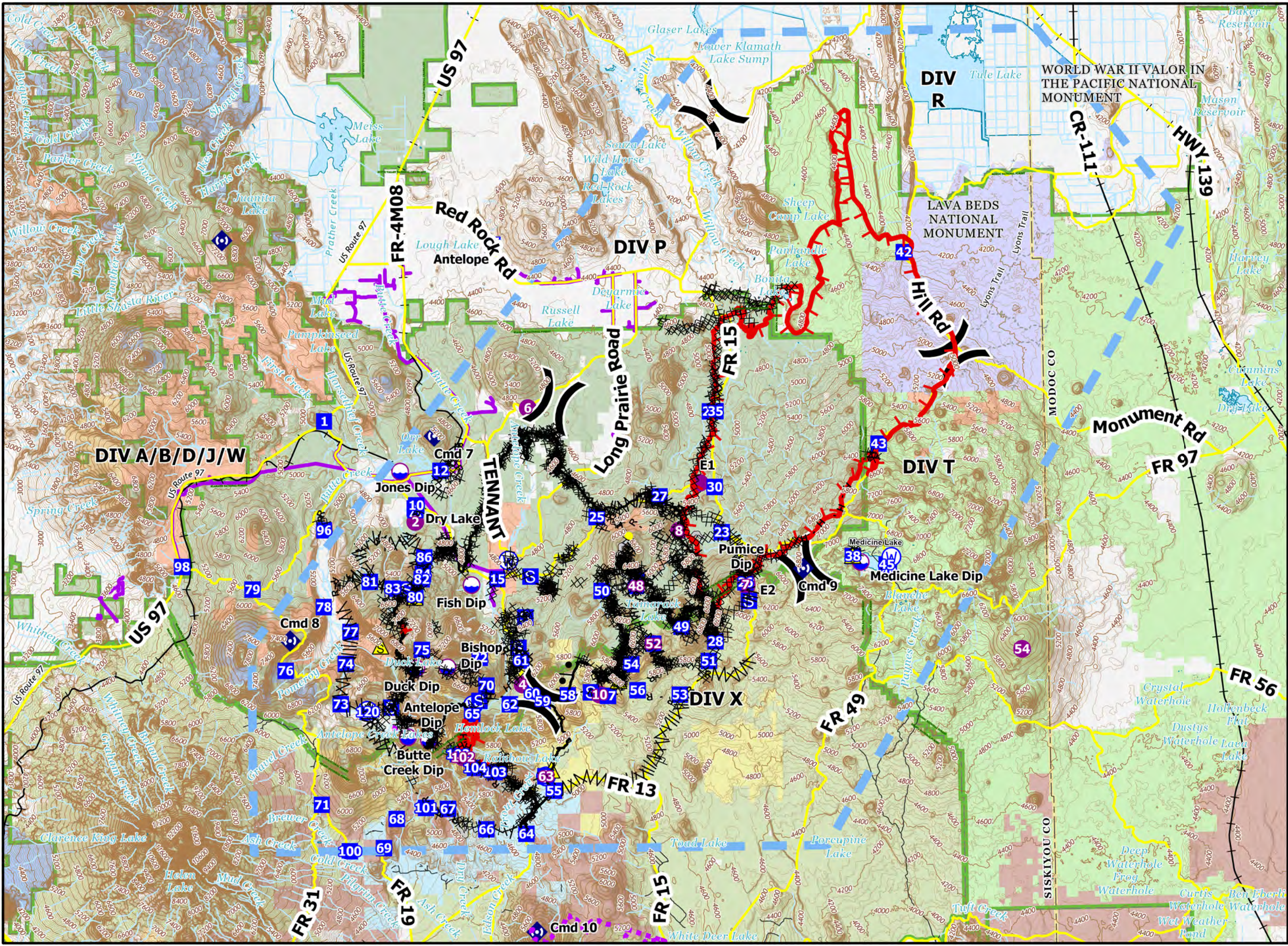


Pilot Map

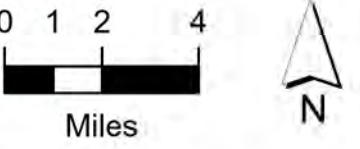
Antelope Fire

CA-KNF-006454

9/12/2021



- Dip Site
- Helispot
- Division Break
- Incident Command Post
- Drop Point
- Camp
- Staging Area
- Repeater
- Safety Zone
- Water Source
- Completed Burnout
- Completed Dozer Line
- Completed Fuel Break
- Completed Hand Line
- Completed Mixed Construction Line
- Completed Road as Line
- Access or Improved Road
- Highlighted Feature
- Route
- Temporary Flight Restriction
- Fire Edge
- Contained Line
- Forest Boundaries
- County or Equivalent
- Transportation**
 - Main Roads
 - Trail
 - Railroads
- Ownership**
 - Klamath National Forest
 - Modoc National Forest
 - Shasta-Trinity National Forest
 - National Park Service
 - CAMPBELL GLOBAL LLC
 - FRUIT GROWERS SUPPLY COMPANY
 - HANCOCK TIMBER RESOURCE GROUP
 - MICHIGAN-CALIFORNIA TIMBER COMPANY
 - SHASTA CASCADE TIMBERLANDS LLC
 - SIERRA PACIFIC INDUSTRIES



FC Point Type	Label	Latitude WGS84 DDM	Longitude WGS84 DDM
Staging Area		41° 37.256'	-121° 59.508'
Camp	Dry Lake	41° 37.194'	-121° 59.476'
Drop Point	10	41° 37.375'	-121° 59.430'
Dip Site	Jones Dip	41° 38.690'	-122° 0.241'
Dip Site	Bishop Dip	41° 31.090'	-121° 57.921'
Dip Site	Duck Dip	41° 31.060'	-121° 59.521'
Drop Point	1	41° 40.664'	-122° 4.144'
Water Source		41° 35.195'	-121° 54.701'
Drop Point	62	41° 29.629'	-121° 54.716'
Drop Point	65	41° 29.276'	-121° 56.681'
Staging Area		41° 29.775'	-121° 56.303'
Drop Point	70	41° 30.365'	-121° 55.932'
Helispot	4	41° 30.387'	-121° 54.054'
Drop Point	12	41° 38.700'	-121° 58.160'
Drop Point	25	41° 36.831'	-121° 50.126'
Repeater	Cmd 7	41° 40.047'	-121° 58.465'
Repeater	Cmd 9	41° 34.732'	-121° 39.501'
Helispot	6	41° 41.086'	-121° 53.601'
Incident Command Post	Antelope	41° 47.423'	-121° 55.319'
Drop Point	30	41° 37.934'	-121° 44.004'
Drop Point	61	41° 31.317'	-121° 54.110'
Drop Point	60	41° 30.040'	-121° 53.565'
Drop Point	59	41° 29.734'	-121° 53.029'
Drop Point	58	41° 29.950'	-121° 51.733'
Drop Point	57	41° 29.905'	-121° 49.665'
Drop Point	56	41° 30.108'	-121° 48.142'
Safety Zone		41° 30.500'	-121° 49.113'
Drop Point	84	41° 34.716'	-121° 59.127'
Drop Point	86	41° 35.357'	-121° 59.050'
Drop Point	72	41° 31.445'	-121° 56.259'
Staging Area		41° 32.985'	-121° 53.864'
Staging Area		41° 31.814'	-121° 54.238'
Staging Area		41° 30.050'	-121° 50.534'
Staging Area		41° 34.564'	-121° 53.574'
Drop Point	82	41° 34.510'	-121° 59.198'
Repeater	Cmd 8	41° 32.180'	-122° 6.024'
Drop Point	15	41° 34.484'	-121° 55.289'
Drop Point	75	41° 31.774'	-121° 59.231'
Drop Point	80	41° 33.826'	-121° 59.535'
Safety Zone		41° 33.825'	-121° 59.563'

FC Point Type	Label	Latitude WGS84 DDM	Longitude WGS84 DDM
Drop Point	40	41° 34.540'	-121° 35.107'
Drop Point	54	41° 31.115'	-121° 48.450'
Drop Point	52	41° 31.900'	-121° 47.304'
Drop Point	48	41° 34.145'	-121° 48.147'
Drop Point	50	41° 33.973'	-121° 49.919'
Drop Point	96	41° 36.448'	-122° 4.202'
Drop Point	98	41° 35.086'	-122° 11.543'
Helispot	8	41° 36.263'	-121° 45.866'
Drop Point	27	41° 37.599'	-121° 46.877'
Water Source		41° 29.616'	-121° 56.630'
Staging Area		41° 30.055'	-121° 50.540'
Water Source		41° 26.820'	-121° 52.908'
Drop Point	64	41° 24.607'	-121° 53.949'
Drop Point	63	41° 26.823'	-121° 52.903'
Drop Point	66	41° 24.801'	-121° 56.029'
Drop Point	67	41° 25.611'	-121° 57.984'
Drop Point	68	41° 25.243'	-122° 0.622'
Drop Point	69	41° 24.120'	-122° 1.292'
Drop Point	100	41° 24.013'	-122° 3.044'
Drop Point	71	41° 25.824'	-122° 4.471'
Safety Zone		41° 27.072'	-121° 52.615'
Staging Area		41° 26.827'	-121° 52.938'
Drop Point	73	41° 29.710'	-122° 3.431'
Drop Point	74	41° 31.264'	-122° 3.149'
Drop Point	77	41° 32.501'	-122° 2.888'
Drop Point	78	41° 33.477'	-122° 4.266'
Staging Area		41° 34.126'	-121° 59.986'
Drop Point	81	41° 34.432'	-122° 1.867'
Drop Point	101	41° 25.656'	-121° 59.109'
Drop Point	79	41° 34.182'	-122° 7.933'
Drop Point	76	41° 31.025'	-122° 6.266'
Drop Point	55	41° 26.264'	-121° 52.506'
Helispot	10	41° 29.958'	-121° 50.096'
Drop Point	120	41° 29.400'	-122° 2.056'
Drop Point	83	41° 34.159'	-122° 0.696'
Drop Point	38	41° 35.179'	-121° 36.946'
Safety Zone		41° 35.208'	-121° 36.954'
Water Source		41° 35.123'	-121° 34.961'
Dip Site	Medicine Lake Dip	41° 34.944'	-121° 36.546'
Drop Point	53	41° 29.913'	-121° 45.949'

FC Point Type	Label	Latitude WGS84 DDM	Longitude WGS84 DDM
Drop Point	51	41° 31.202'	-121° 44.431'
Safety Zone		41° 31.950'	-122° 1.351'
Staging Area		41° 33.507'	-121° 42.324'
Water Source		41° 29.446'	-122° 2.065'
Drop Point	28	41° 31.956'	-121° 44.082'
Staging Area		41° 34.347'	-121° 48.118'
Staging Area		41° 29.556'	-122° 0.844'
Drop Point	49	41° 32.543'	-121° 45.816'
Drop Point	23	41° 36.178'	-121° 43.674'
Drop Point	102	41° 27.725'	-121° 57.440'
Drop Point	103	41° 27.008'	-121° 55.539'
Drop Point	104	41° 27.183'	-121° 56.571'
Dip Site	Fish Dip	41° 34.264'	-121° 56.633'
Dip Site	Butte Creek Dip	41° 28.402'	-121° 59.995'
Helispot	2	41° 36.730'	-121° 59.492'
Repeater	Cmd 10	41° 20.800'	-121° 53.468'
Helispot	E2	41° 34.099'	-121° 42.430'
Helispot	48	41° 34.145'	-121° 48.147'
Helispot	7	41° 34.138'	-121° 42.481'
Helispot	52	41° 31.900'	-121° 47.304'
Helispot	54	41° 31.477'	-121° 28.294'
Helispot	102	41° 27.600'	-121° 57.187'
Helispot	63	41° 26.823'	-121° 52.904'
Dip Site	Antelope Dip	41° 28.282'	-121° 58.923'
Dip Site	Pumice Dip	41° 34.250'	-121° 42.441'
Helispot	E1	41° 38.099'	-121° 44.766'
Repeater		41° 47.700'	-122° 9.329'
Drop Point	29	41° 40.860'	-121° 44.191'
Drop Point	45	41° 34.832'	-121° 35.208'
Division Break		41° 41.319'	-121° 52.238'
Division Break		41° 29.734'	-121° 53.029'
Division Break		41° 34.732'	-121° 39.501'
Division Break		41° 42.959'	-121° 31.549'
Drop Point	35	41° 40.865'	-121° 43.904'
Drop Point	26	41° 34.223'	-121° 42.494'
Drop Point	43	41° 39.513'	-121° 35.520'
Drop Point	42	41° 46.910'	-121° 34.057'
Division Break		41° 52.347'	-121° 43.771'