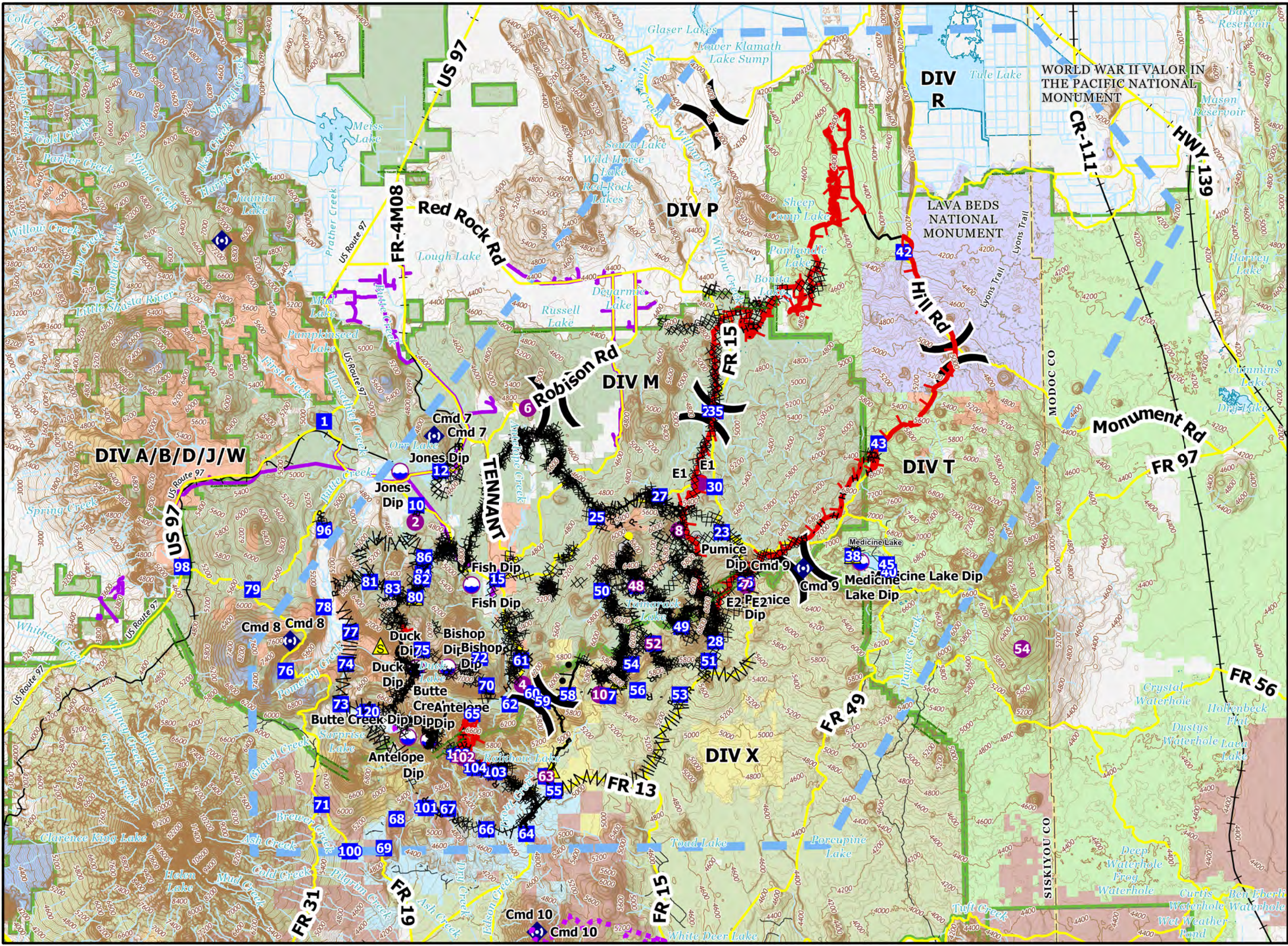


# Pilot Map

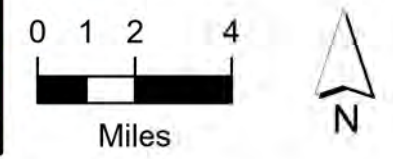
## Antelope Fire

### CA-KNF-006454

9/13/2021



- Dip Site
  - Helispot
  - Division Break
  - Drop Point
  - Repeater
  - Safety Zone
  - Completed Burnout
  - Completed Dozer Line
  - Completed Fuel Break
  - Completed Hand Line
  - Completed Mixed Construction Line
  - Completed Road as Line
  - Access or Improved Road
  - Highlighted Feature
  - Route
  - Temporary Flight Restriction
  - Fire Edge
  - Contained Line
  - Forest Boundaries
  - County or Equivalent
- Transportation**
- Main Roads
  - Trail
  - Railroads
- Ownership**
- Klamath National Forest
  - Modoc National Forest
  - Shasta-Trinity National Forest
  - National Park Service
  - CAMPBELL GLOBAL LLC
  - FRUIT GROWERS SUPPLY COMPANY
  - HANCOCK TIMBER RESOURCE GROUP
  - MICHIGAN-CALIFORNIA TIMBER COMPANY
  - SHASTA CASCADE TIMBERLANDS LLC
  - SIERRA PACIFIC INDUSTRIES





Incident Name	FC Point Type	Label	Latitude WGS84 DDM	Longitude WGS84 DDM
Antelope	Dip Site	Jones Dip	41° 38.690'	-122° 0.241'
Antelope	Dip Site	Bishop Dip	41° 31.090'	-121° 57.921'
Antelope	Dip Site	Duck Dip	41° 31.060'	-121° 59.521'
Antelope	Dip Site	Medicine Lake Dip	41° 34.944'	-121° 36.546'
Antelope	Dip Site	Fish Dip	41° 34.264'	-121° 56.633'
Antelope	Dip Site	Butte Creek Dip	41° 28.402'	-121° 59.995'
Antelope	Dip Site	Antelope Dip	41° 28.282'	-121° 58.923'
Antelope	Dip Site	Pumice Dip	41° 34.250'	-121° 42.441'
Antelope	Drop Point	10	41° 37.375'	-121° 59.430'
Antelope	Drop Point	1	41° 40.664'	-122° 4.144'
Antelope	Drop Point	62	41° 29.629'	-121° 54.716'
Antelope	Drop Point	65	41° 29.276'	-121° 56.681'
Antelope	Drop Point	70	41° 30.365'	-121° 55.932'
Antelope	Drop Point	12	41° 38.700'	-121° 58.160'
Antelope	Drop Point	25	41° 36.831'	-121° 50.126'
Antelope	Drop Point	30	41° 37.934'	-121° 44.004'
Antelope	Drop Point	61	41° 31.317'	-121° 54.110'
Antelope	Drop Point	60	41° 30.040'	-121° 53.565'
Antelope	Drop Point	59	41° 29.734'	-121° 53.029'
Antelope	Drop Point	58	41° 29.950'	-121° 51.733'
Antelope	Drop Point	57	41° 29.905'	-121° 49.665'
Antelope	Drop Point	56	41° 30.108'	-121° 48.142'
Antelope	Drop Point	84	41° 34.716'	-121° 59.127'
Antelope	Drop Point	86	41° 35.357'	-121° 59.050'
Antelope	Drop Point	72	41° 31.445'	-121° 56.259'
Antelope	Drop Point	82	41° 34.510'	-121° 59.198'
Antelope	Drop Point	15	41° 34.484'	-121° 55.289'
Antelope	Drop Point	75	41° 31.774'	-121° 59.231'
Antelope	Drop Point	80	41° 33.826'	-121° 59.535'
Antelope	Drop Point	40	41° 34.540'	-121° 35.107'
Antelope	Drop Point	54	41° 31.115'	-121° 48.450'
Antelope	Drop Point	52	41° 31.900'	-121° 47.304'
Antelope	Drop Point	48	41° 34.145'	-121° 48.147'
Antelope	Drop Point	50	41° 33.973'	-121° 49.919'
Antelope	Drop Point	96	41° 36.448'	-122° 4.202'
Antelope	Drop Point	98	41° 35.086'	-122° 11.543'
Antelope	Drop Point	27	41° 37.599'	-121° 46.877'
Antelope	Drop Point	64	41° 24.607'	-121° 53.949'
Antelope	Drop Point	63	41° 26.823'	-121° 52.903'
Antelope	Drop Point	66	41° 24.801'	-121° 56.029'
Antelope	Drop Point	67	41° 25.611'	-121° 57.984'
Antelope	Drop Point	68	41° 25.243'	-122° 0.622'
Antelope	Drop Point	69	41° 24.120'	-122° 1.292'
Antelope	Drop Point	100	41° 24.013'	-122° 3.044'
Antelope	Drop Point	71	41° 25.824'	-122° 4.471'
Antelope	Drop Point	73	41° 29.710'	-122° 3.431'
Antelope	Drop Point	74	41° 31.264'	-122° 3.149'

Incident Name	FC Point Type	Label	Latitude WGS84 DDM	Longitude WGS84 DDM
Antelope	Drop Point	77	41° 32.501'	-122° 2.888'
Antelope	Drop Point	78	41° 33.477'	-122° 4.266'
Antelope	Drop Point	81	41° 34.432'	-122° 1.867'
Antelope	Drop Point	101	41° 25.656'	-121° 59.109'
Antelope	Drop Point	79	41° 34.182'	-122° 7.933'
Antelope	Drop Point	76	41° 31.025'	-122° 6.266'
Antelope	Drop Point	55	41° 26.264'	-121° 52.506'
Antelope	Drop Point	120	41° 29.400'	-122° 2.056'
Antelope	Drop Point	83	41° 34.159'	-122° 0.696'
Antelope	Drop Point	38	41° 35.179'	-121° 36.946'
Antelope	Drop Point	53	41° 29.913'	-121° 45.949'
Antelope	Drop Point	51	41° 31.202'	-121° 44.431'
Antelope	Drop Point	28	41° 31.956'	-121° 44.082'
Antelope	Drop Point	49	41° 32.543'	-121° 45.816'
Antelope	Drop Point	23	41° 36.178'	-121° 43.674'
Antelope	Drop Point	102	41° 27.725'	-121° 57.440'
Antelope	Drop Point	103	41° 27.008'	-121° 55.539'
Antelope	Drop Point	104	41° 27.183'	-121° 56.571'
Antelope	Drop Point	29	41° 40.860'	-121° 44.191'
Antelope	Drop Point	45	41° 34.832'	-121° 35.208'
Antelope	Drop Point	35	41° 40.865'	-121° 43.904'
Antelope	Drop Point	26	41° 34.223'	-121° 42.494'
Antelope	Drop Point	43	41° 39.513'	-121° 35.520'
Antelope	Drop Point	42	41° 46.910'	-121° 34.057'
Antelope	Helispot	4	41° 30.387'	-121° 54.054'
Antelope	Helispot	6	41° 41.086'	-121° 53.601'
Antelope	Helispot	8	41° 36.263'	-121° 45.866'
Antelope	Helispot	10	41° 29.958'	-121° 50.096'
Antelope	Helispot	2	41° 36.730'	-121° 59.492'
Antelope	Helispot	E2	41° 34.099'	-121° 42.430'
Antelope	Helispot	48	41° 34.145'	-121° 48.147'
Antelope	Helispot	7	41° 34.138'	-121° 42.481'
Antelope	Helispot	52	41° 31.900'	-121° 47.304'
Antelope	Helispot	54	41° 31.477'	-121° 28.294'
Antelope	Helispot	102	41° 27.600'	-121° 57.187'
Antelope	Helispot	63	41° 26.823'	-121° 52.904'
Antelope	Helispot	E1	41° 38.099'	-121° 44.766'
Antelope	Repeater	Cmd 7	41° 40.047'	-121° 58.465'
Antelope	Repeater	Cmd 9	41° 34.732'	-121° 39.501'
Antelope	Repeater	Cmd 8	41° 32.180'	-122° 6.024'
Antelope	Repeater	Cmd 10	41° 20.800'	-121° 53.468'
Antelope	Repeater		41° 47.700'	-122° 9.329'
Antelope	Safety Zone		41° 30.500'	-121° 49.113'
Antelope	Safety Zone		41° 33.825'	-121° 59.563'
Antelope	Safety Zone		41° 27.072'	-121° 52.615'
Antelope	Safety Zone		41° 35.208'	-121° 36.954'
Antelope	Safety Zone		41° 31.950'	-122° 1.351'