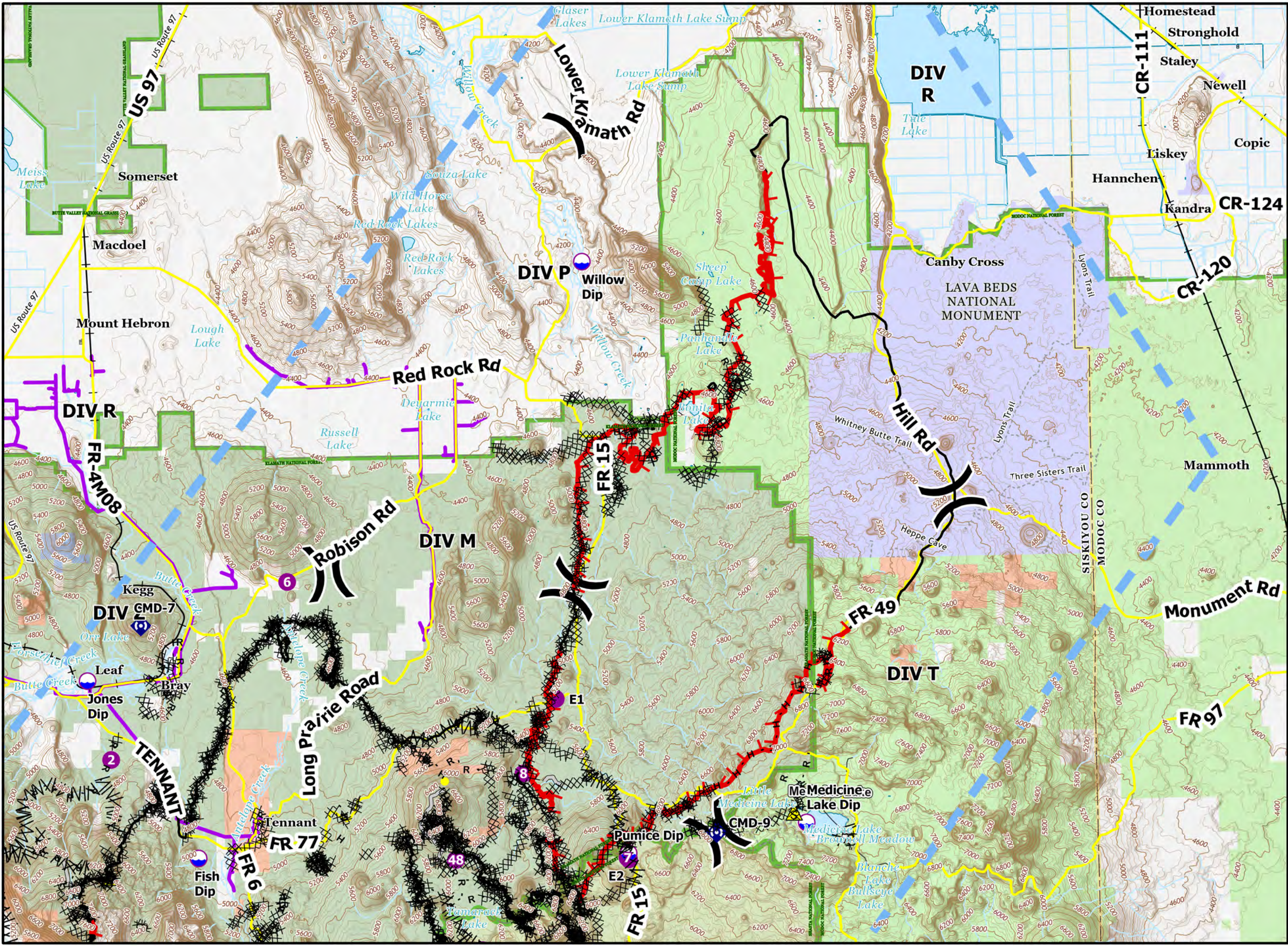


Pilot Map

Antelope Fire

CA-KNF-006454

9/17/2021



- Dip Site
 - Helispot
 - Division Break
 - Repeater
 - Safety Zone
 - Completed Dozer Line
 - Completed Fuel Break
 - Completed Hand Line
 - Completed Mixed Construction Line
 - Completed Road as Line
 - Access or Improved Road
 - Highlighted Feature
 - Temporary Flight Restriction
 - Fire Edge
 - Contained Line
 - Forest Boundaries
 - County or Equivalent
- Transportation**
- Main Roads
 - Trail
 - Railroads
- Ownership**
- Klamath National Forest
 - Modoc National Forest
 - Shasta-Trinity National Forest
 - National Park Service
 - CAMPBELL GLOBAL LLC
 - FRUIT GROWERS SUPPLY COMPANY
 - MICHIGAN-CALIFORNIA TIMBER COMPANY



California Interagency
Incident Management Team



N



0 1 2 4
Miles

Incident Name	FC Point Type	Label	Latitude WGS84 DDM	Longitude WGS84 DDM
Antelope	Dip Site	Jones Dip	41° 38.690'	-122° 0.240'
Antelope	Dip Site	Hemlock	41° 28.740'	-121° 55.600'
Antelope	Dip Site	Bishop Dip	41° 31.090'	-121° 57.920'
Antelope	Dip Site	Duck Dip	41° 31.060'	-121° 59.520'
Antelope	Dip Site	Medicine Lake Dip	41° 34.944'	-121° 36.545'
Antelope	Dip Site	Fish Dip	41° 34.264'	-121° 56.632'
Antelope	Dip Site	Butte Creek Dip	41° 28.402'	-121° 59.994'
Antelope	Dip Site	Antelope Dip	41° 28.282'	-121° 58.922'
Antelope	Dip Site	Pumice Dip	41° 34.250'	-121° 42.440'
Antelope	Dip Site	Willow Dip	41° 48.920'	-121° 43.693'
Antelope	Helispot	4	41° 30.387'	-121° 54.053'
Antelope	Helispot	6	41° 41.085'	-121° 53.600'
Antelope	Helispot	8	41° 36.263'	-121° 45.865'
Antelope	Helispot	10	41° 29.958'	-121° 50.095'
Antelope	Helispot	2	41° 36.730'	-121° 59.491'
Antelope	Helispot	E2	41° 34.099'	-121° 42.429'
Antelope	Helispot	48	41° 34.145'	-121° 48.146'
Antelope	Helispot	7	41° 34.138'	-121° 42.480'
Antelope	Helispot	52	41° 31.900'	-121° 47.303'
Antelope	Helispot	54	41° 31.477'	-121° 28.293'
Antelope	Helispot	102	41° 27.600'	-121° 57.186'
Antelope	Helispot	63	41° 26.823'	-121° 52.903'
Antelope	Helispot	E1	41° 38.099'	-121° 44.765'
Antelope	Repeater	CMD-7	41° 40.046'	-121° 58.459'
Antelope	Repeater	CMD-8	41° 32.186'	-122° 6.024'
Antelope	Repeater	CMD-9	41° 34.732'	-121° 39.516'
Antelope	Repeater	CMD-11	41° 20.799'	-121° 53.455'
Antelope	Safety Zone		41° 30.500'	-121° 49.112'
Antelope	Safety Zone		41° 33.824'	-121° 59.563'
Antelope	Safety Zone		41° 27.072'	-121° 52.614'
Antelope	Safety Zone		41° 35.208'	-121° 36.953'
Antelope	Safety Zone		41° 31.950'	-122° 1.350'