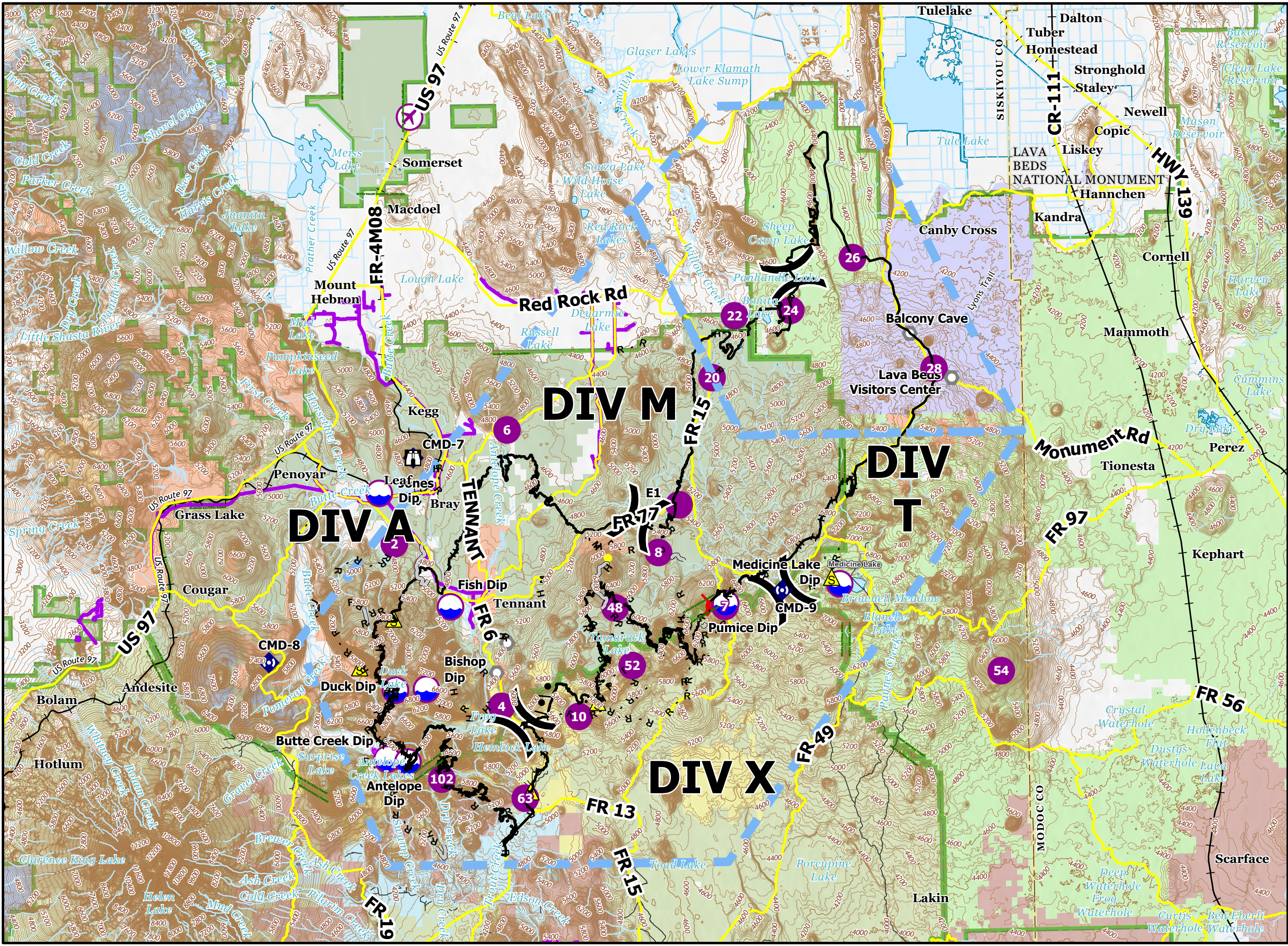


# Pilot Map

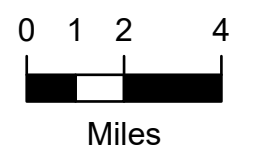
## Antelope Fire

### CA-KNF-006454

9/30/2021



- Airstrip or Airport
  - Dip Site
  - Helispot
  - Division Break
  - Lookout
  - Landmark
  - Repeater
  - Safety Zone
  - Completed Burnout
  - Completed Hand Line
  - Completed Mixed Construction Line
  - Completed Road as Line
  - Access or Improved Road
  - Highlighted Feature
  - Route
  - Temporary Flight Restriction
  - Fire Edge
  - Contained Line
  - Forest Boundaries
  - County or Equivalent
- Transportation**
- Main Roads
  - Trail
  - Railroads
- Ownership**
- Klamath National Forest
  - Modoc National Forest
  - Shasta-Trinity National Forest
  - National Park Service
  - CAMPBELL GLOBAL LLC
  - FRUIT GROWERS SUPPLY COMPANY
  - HANCOCK TIMBER RESOURCE GROUP
  - MICHIGAN-CALIFORNIA TIMBER COMPANY
  - SHASTA CASCADE TIMBERLANDS LLC
  - SIERRA PACIFIC INDUSTRIES





Incident Name	FC Point Type	Label	Latitude WGS84 DDM	Longitude WGS84 DDM
Antelope	Dip Site	Duck Dip	41° 31.060'	-121° 59.521'
Antelope	Dip Site	Medicine Lake Dip	41° 34.944'	-121° 36.546'
Antelope	Dip Site	Hemlock	41° 28.740'	-121° 55.601'
Antelope	Dip Site	Willow Dip	41° 48.920'	-121° 43.694'
Tennant	Dip Site	Juanita Dip	41° 48.886'	-122° 7.445'
Tennant	Dip Site	Jerome Dip	41° 44.610'	-122° 0.081'
Antelope	Dip Site	Butte Creek Dip	41° 28.402'	-121° 59.995'
Antelope	Dip Site	Fish Dip	41° 34.264'	-121° 56.633'
Antelope	Dip Site	Pumice Dip	41° 34.250'	-121° 42.441'
Tennant	Dip Site	Red Roof Dip	41° 44.200'	-122° 0.641'
Antelope	Dip Site	Antelope Dip	41° 28.282'	-121° 58.923'
Antelope	Dip Site	Jones Dip	41° 38.690'	-122° 0.241'
Tennant	Dip Site	Orr Dip	41° 39.746'	-121° 59.557'
Antelope	Dip Site	Bishop Dip	41° 31.090'	-121° 57.921'
Tennant	Helispot	5	41° 44.905'	-122° 6.546'
Antelope	Helispot	102	41° 27.600'	-121° 57.187'
Antelope	Helispot	52	41° 31.900'	-121° 47.304'
Antelope	Helispot	4	41° 30.387'	-121° 54.054'
Antelope	Helispot	6	41° 41.086'	-121° 53.601'
Antelope	Helispot	E1	41° 38.099'	-121° 44.766'
Antelope	Helispot	10	41° 29.958'	-121° 50.096'
Antelope	Helispot	2	41° 36.730'	-121° 59.492'
Antelope	Helispot	48	41° 34.145'	-121° 48.147'
Tennant	Helispot	9	41° 38.001'	-122° 11.803'
Antelope	Helispot	8	41° 36.263'	-121° 45.866'
Antelope	Helispot	E2	41° 34.099'	-121° 42.430'
Antelope	Helispot	7	41° 34.138'	-121° 42.481'
Antelope	Helispot	63	41° 26.823'	-121° 52.904'

Incident Name	FC Point Type	Label	Latitude WGS84 DDM	Longitude WGS84 DDM
Lava	Helispot	1	41° 27.447'	-122° 13.846'
Antelope	Helispot	54	41° 31.477'	-121° 28.294'
Antelope	Helispot	28	41° 43.220' N	121° 31.490' W
Antelope	Helispot	26	41° 47.560' N	121° 35.610' W
Antelope	Helispot	24	41° 45.560' N	121° 38.850' W
Antelope	Helispot	22	41° 45.380' N	121° 41.760' W
Antelope	Helispot	20	41° 43.000' N	121° 42.970' W
Antelope	Repeater	CMD-8	41° 32.186'	-122° 6.025'
Antelope	Repeater	CMD-9	41° 34.732'	-121° 39.516'
Lava	Repeater	C-29	41° 37.691'	-122° 13.896'
Tennant	Repeater	NIFC C2	41° 47.724'	-122° 9.347'
Antelope	Repeater	CMD-7	41° 40.046'	-121° 58.460'
Tennant	Repeater	NIFC C8	41° 40.044'	-121° 58.471'
Antelope	Repeater	CMD-11	41° 20.800'	-121° 53.456'
Lava	Safety Zone		41° 24.486'	-122° 17.113'
Lava	Safety Zone		41° 30.766'	-122° 14.808'
Lava	Safety Zone		41° 25.700'	-122° 17.886'
Antelope	Safety Zone		41° 31.950'	-122° 1.351'
Antelope	Safety Zone		41° 30.500'	-121° 49.113'
Antelope	Safety Zone		41° 33.825'	-121° 59.563'
Antelope	Safety Zone		41° 35.208'	-121° 36.954'
Lava	Safety Zone		41° 29.533'	-122° 12.132'
Antelope	Safety Zone		41° 27.072'	-121° 52.615'
Lava	Safety Zone		41° 28.951'	-122° 13.431'
Lava	Safety Zone		41° 24.459'	-122° 18.404'
Lava	Safety Zone		41° 29.521'	-122° 11.301'
Lava	Sling Site	Whitney Falls	41° 27.449'	-122° 13.848'