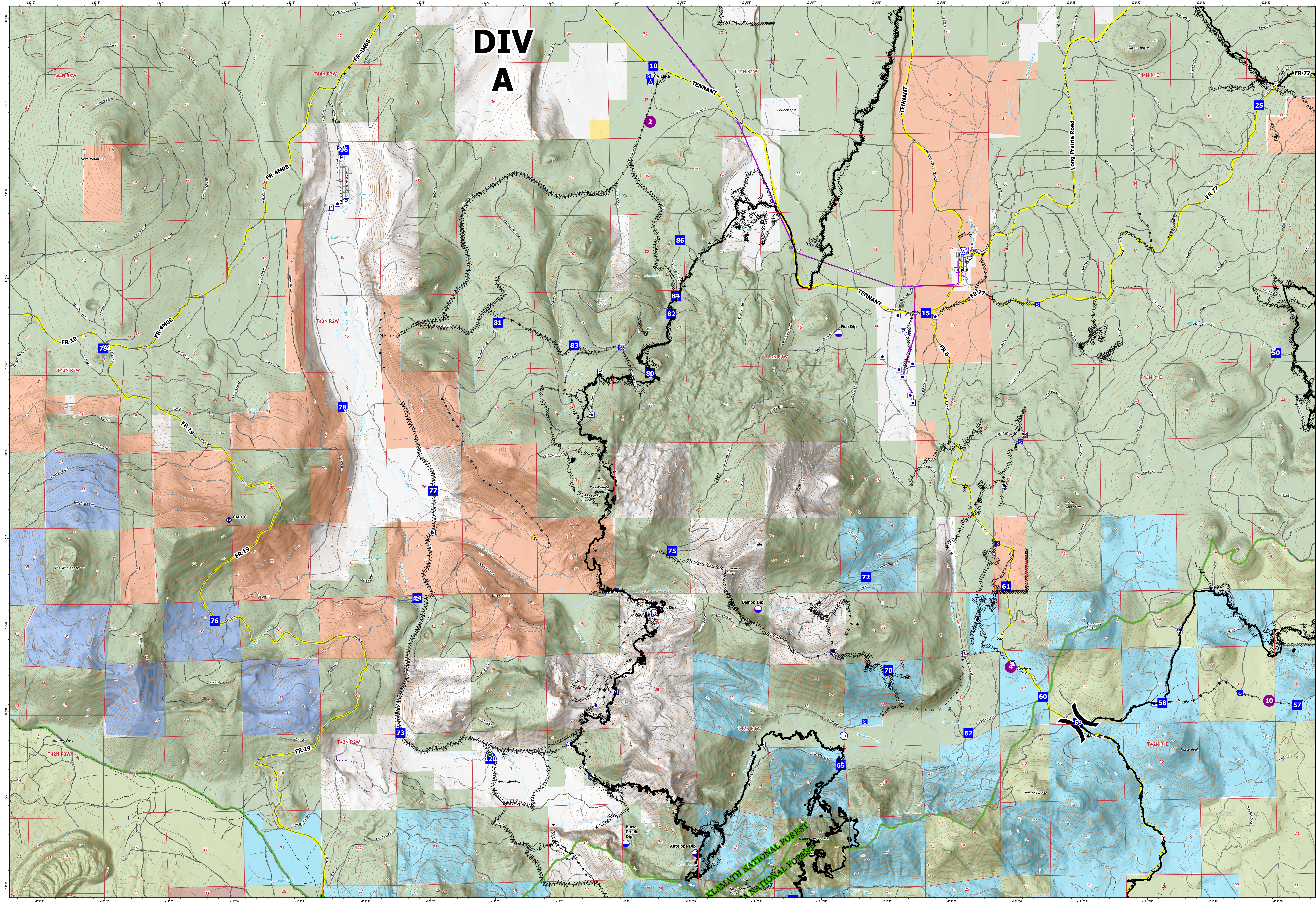


DIV A



<ul style="list-style-type: none"> ● Dip Site ● Helispot X Division Break ■ Drop Point ■ Camp ■ Staging Area ○ Landmark ● Water Development or Draft Site 	<ul style="list-style-type: none"> ◆ Repeater ▲ Safety Zone ● Water Source — Completed Dozer Line M Completed Fuel Break — Completed Hand Line — Completed Mixed Construction Line — Completed Road as Line 	<ul style="list-style-type: none"> — Contained Line — Forest Boundaries — County or Equivalent Transportation — Main Roads — State Highway/County Road/Interstate — Forest Road — Private/Other Road 	<p>Direct Protection Areas</p> <ul style="list-style-type: none"> — USDA/Forest Service — MICHIGAN-CALIFORNIA TIMBER COMPANY — SIERRA PACIFIC INDUSTRIES — Klamath National Forest — Shasta-Trinity National Forest — Bureau of Land Management (BLM) — CAMPBELL GLOBAL LLC — FRUIT GROWERS SUPPLY COMPANY 	<p>Accountable Property</p> <ul style="list-style-type: none"> — HANCOCK TIMBER RESOURCE GROUP — MICHIGAN-CALIFORNIA TIMBER COMPANY — SIERRA PACIFIC INDUSTRIES — Other Property — Pump — Water Tank
---	---	--	--	--

Division A Zoom - Operations
Antelope Fire
 CA-KNF-006454
 10/2/2021
 145,632 acres at 9/19/2021

Nevada Type 3
 Forest Management Plans

1:24,000

Map Updated: 10/1/2021 9:01 PM