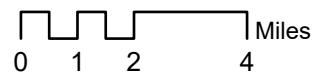
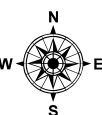


Tennant Fire

CA-KNF-005169
07/04/21 07:00

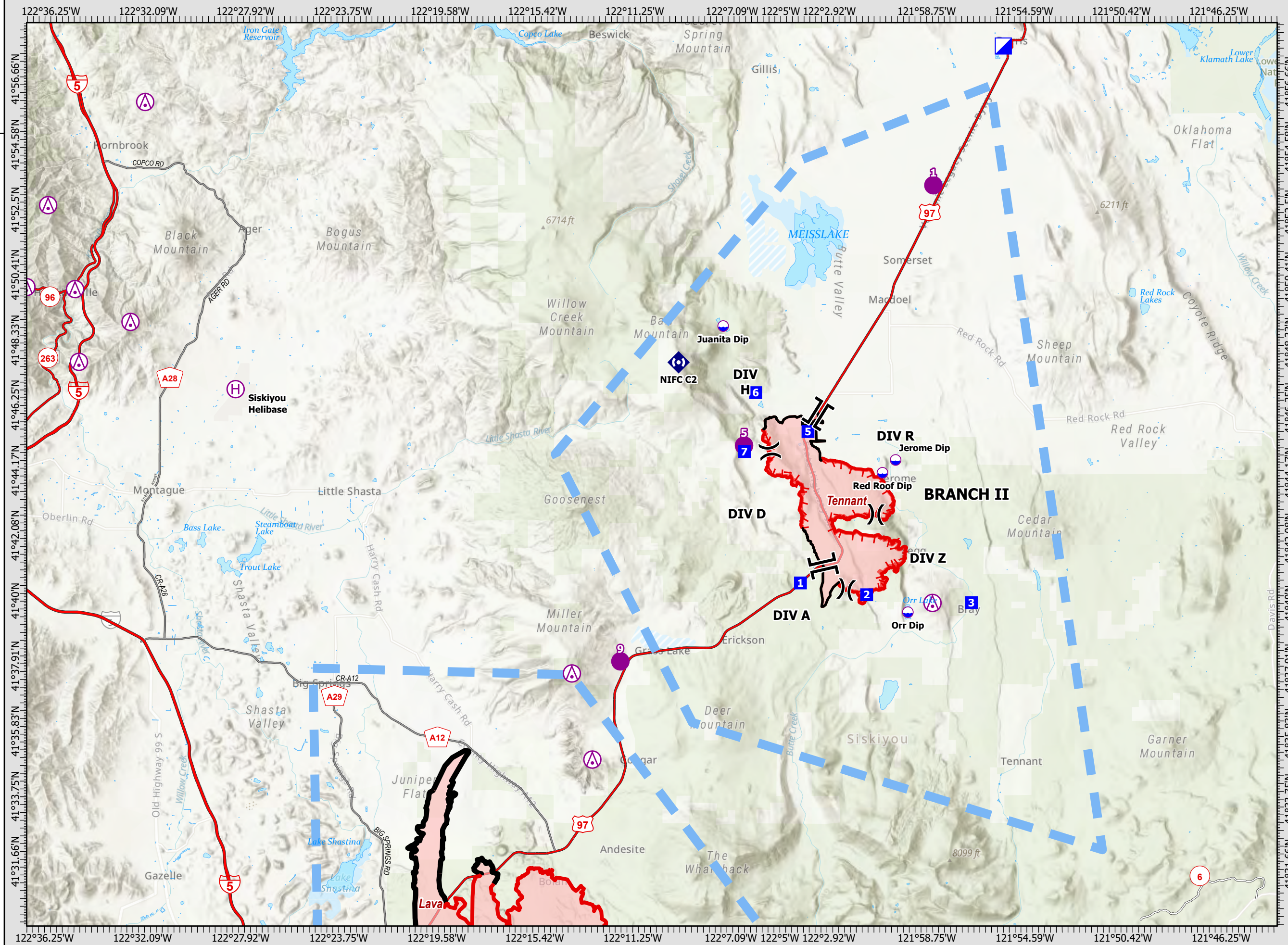
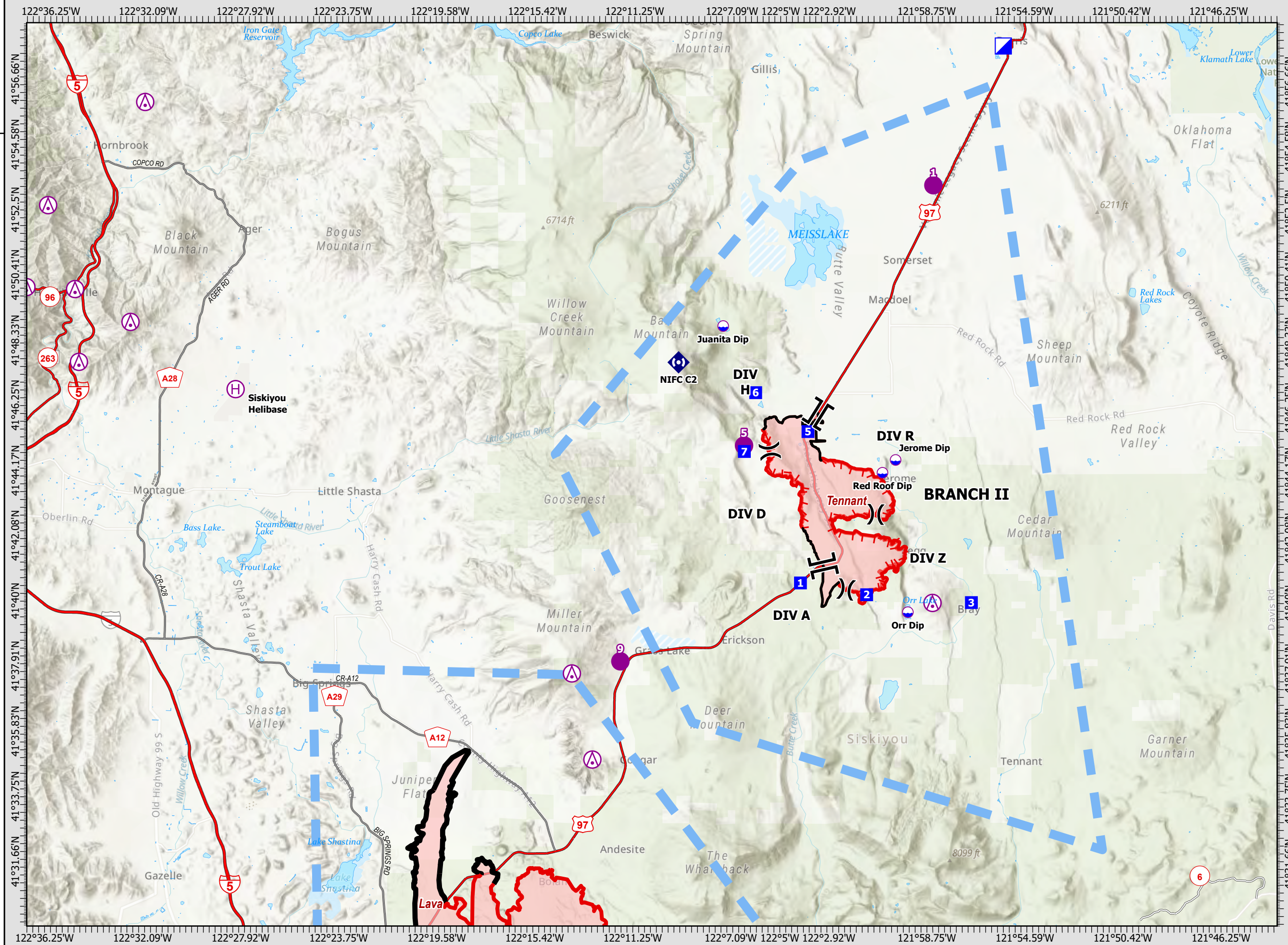
10,012 acres
at 7/2/21 23:00

- Aerial Hazards
- Dip Site
- Helispot
- Helibase
- Division Break
- Branch Break
- Incident Command Post
- Drop Point
- Repeater
- Temporary Flight Restriction
- Fire Edge
- Contained Line
- Wildfire Daily Fire Perimeter



Datum: North American 1983

Map Updated: 7/4/2021 0105



Label	LAT	LONG
H-1	41° 53.225' N	121° 58.466' W
H-5	41° 44.905' N	122° 06.546' W
H-9	41° 38.001' N	122° 11.803' W
Jerome Dip	41° 44.610' N	122° 00.081' W
Juanita Dip	41° 48.886' N	122° 07.445' W
Orr Dip	41° 39.746' N	121° 59.557' W
Red Roof Dip	41° 44.200' N	122° 00.641' W
Siskiyou Helibase	41° 46.817' N	122° 28.254' W

3. REMARKS (Safety Notes, Hazards, Air Operations Special Equipment, etc.):

Visibility - Smoke. (Check with ATGS)
See map for Avoidance Area
See map for no dip area: Medicine Lake
Flight Hazards- Powerlines, winds, MTR's (Check Flight Haz Map, MTR's)
Fly all missions with landing lights on.
USE 1255
Keep foam and retardant out of waterways. Do not contaminate dip sites. Clean buckets for IA
Use see and avoid tactics with external loads over roads and highways.
Siskiyou Airport Antelope East of runway. Gliders and RC aircraft Herd Peak

4. MEDIVAC AIRCRAFT

Incident medevac: Incident ships as available
 Hoist ship:
 Short Haul avail on request
 Lava Fire Mott Helibase
 Air Ambulances:
 Mercy 105 MFR
 PHI 43, Reach 5 RDD
 Airlink 3 LMT

7. FREQUENCY

	AM	FM
Command Rptr Sage Net		172.3250 RX 162.2250 TX Tone 8 103.5
Forest Net Rptr YICC		171.5250 RX 165.4125 TX Tone 8 103.5
SKU Local for Command Cal Fire IA		151.3250 RX 159.3600 TX Tone 8 103.5 Tone 2 123.0
RW A/A FW A/A Air tactics	119.0750	166.6000
A/G Cmd (Ops, Divs)		169.2000
A/G Tac A/G CDF 1 IA ONLY		168.4000 151.2200 Tone 16 192.8 TX/RX
Tower Siskiyou Tanker Base/Helibase Coordination DECK for Siskiyou DECK for Butte Valley	120.275	168.3500 163.1000
Cal Coord		156.0750 Tone 6 156.7 TX/RX
Air Guard		168.6250 Tone 1 110.9 TX

8. FIXED-WING Avail/Type/Make-Model/ FAA N# / Base(s)
 AA-05 Siskiyou

Air Tankers : On request reload base open at Siskiyou

Lead Planes: On Request

Helibase location:
 Siskiyou: 41 46.70 X 123 28.30
 Butte Valley 41 53.250 X 121 58.550

