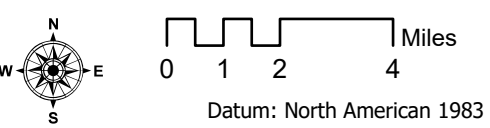


## Tennant Fire

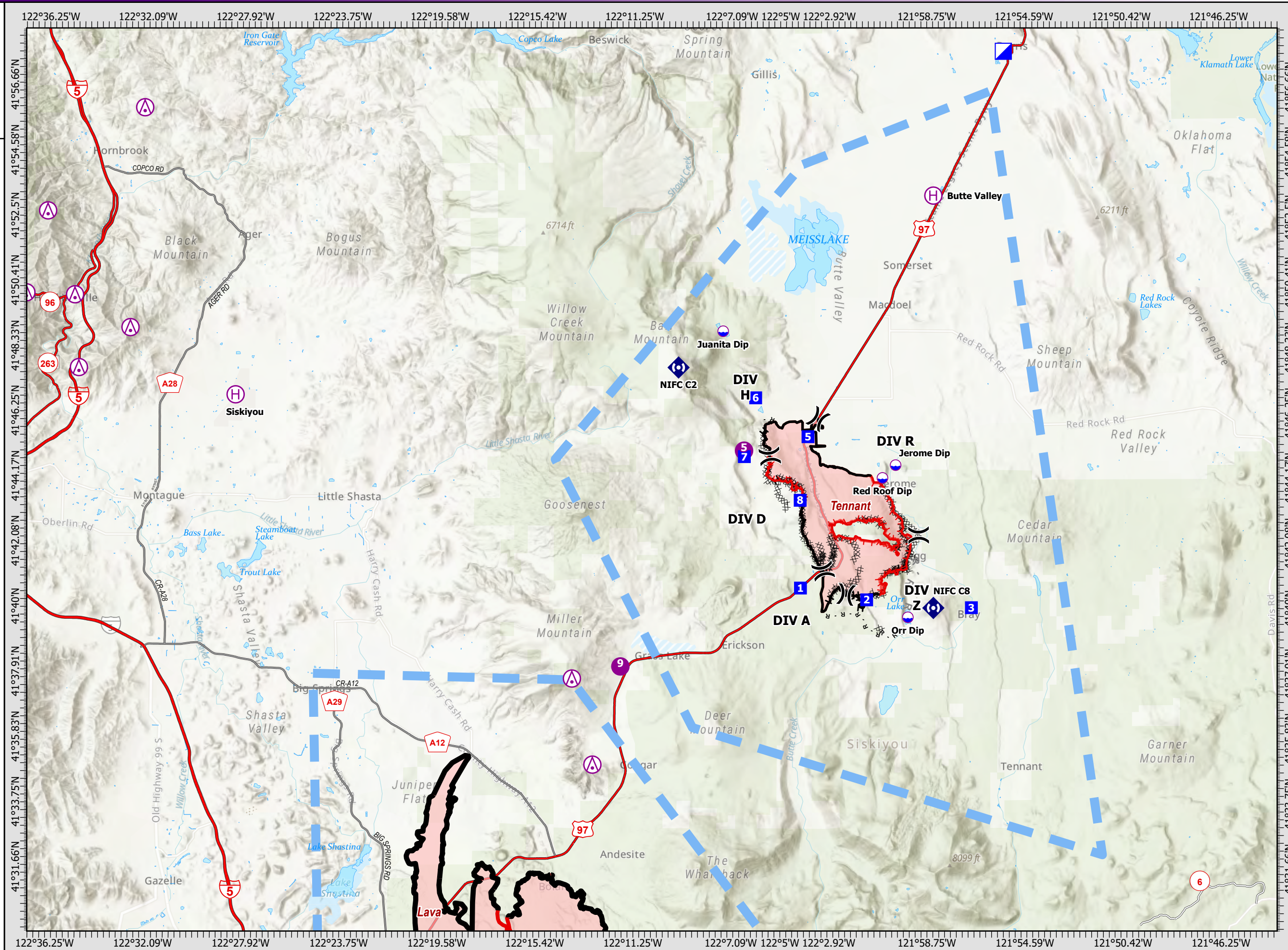
CA-KNF-005169  
07/06/21 07:00

10,541 acres  
at 7/4/21 21:22

- Aerial Hazards
- Dip Site
- Helispot
- Helibase
- Division Break
- Incident Command Post
- Drop Point
- Repeater
- Completed Dozer Line
- Completed Hand Line
- Completed Road as Line
- Planned Road as Line
- Temporary Flight Restriction
- Fire Edge
- Contained Line
- Wildfire Daily Fire Perimeter



Map Updated: 7/5/2021 2207



122°36.25'W 122°32.09'W 122°27.92'W 122°23.75'W 122°19.58'W 122°15.42'W 122°11.25'W 122°7.09'W 122°5'W 122°2.92'W 121°58.75'W 121°54.59'W 121°50.42'W 121°46.25'W

122°36.25'W 122°32.09'W 122°27.92'W 122°23.75'W 122°19.58'W 122°15.42'W 122°11.25'W 122°7.09'W 122°5'W 122°2.92'W 121°58.75'W 121°54.59'W 121°50.42'W 121°46.25'W

41°56.66'N 41°54.58'N 41°52.5'N 41°50.41'N 41°48.33'N 41°46.25'N 41°44.17'N 41°42.08'N 41°40'N 41°37.91'N 41°35.83'N 41°33.75'N 41°31.66'N

41°56.66'N 41°54.58'N 41°52.5'N 41°50.41'N 41°48.33'N 41°46.25'N 41°44.17'N 41°42.08'N 41°40'N 41°37.91'N 41°35.83'N 41°33.75'N 41°31.66'N

Label	LAT	LONG
Butte Valley Helibase	41° 53.225' N	121° 58.466' W
H-5	41° 44.905' N	122° 06.546' W
H-9	41° 38.001' N	122° 11.803' W
Jerome Dip	41° 44.610' N	122° 00.081' W
Juanita Dip	41° 48.886' N	122° 07.445' W
Orr Dip	41° 39.746' N	121° 59.557' W
Red Roof Dip	41° 44.200' N	122° 00.641' W
Siskiyou Helibase	41° 46.817' N	122° 28.254' W

**3. REMARKS (Safety Notes, Hazards, Air Operations Special Equipment, etc.):**

Visibility - Smoke. (Check with ATGS)

See map for Avoidance Area

See map for no dip area: Medicine Lake

Flight Hazards- Powerlines, winds, MTR's (Check Flight Haz Map, MTR's)

Fly all missions with landing lights on.

USE 1255

Keep foam and retardant out of waterways. Do not contaminate dip sites. Clean buckets for IA

Use see and avoid tactics with external loads over roads and highways.

Siskiyou Airport Antelope East of runway. Gliders and RC aircraft Herd Peak

**4. MEDIVAC AIRCRAFT**

Incident medevac: Incident ships as available  
 Hoist ship:  
 Short Haul avail on request  
 Lava Fire Mott Helibase  
 CHP Hoist Day Redding  
 Air Ambulances:  
 Mercy 105 MFR  
 PHI 43, Reach 5 RDD  
 Emergency Airlift K Falls

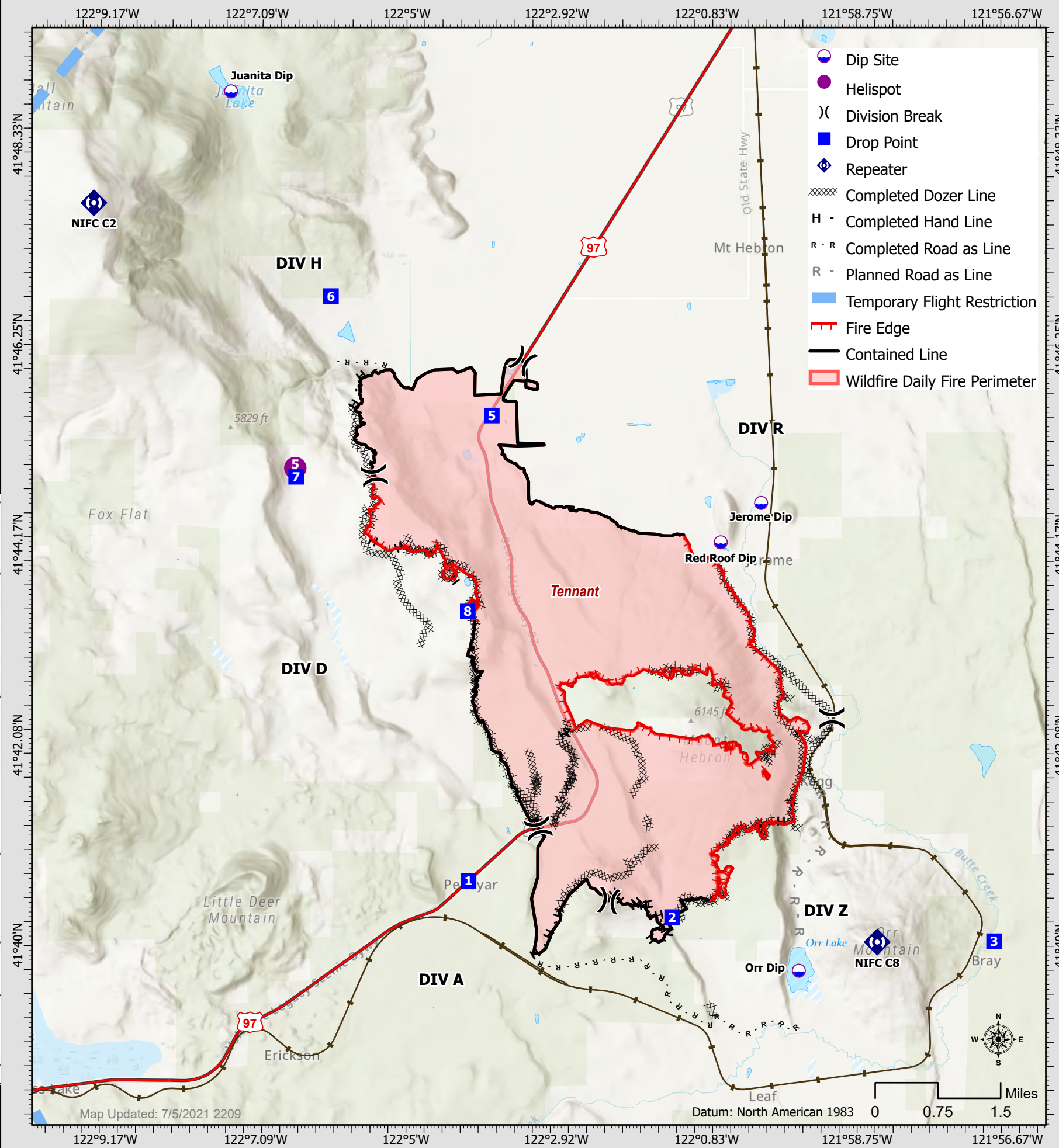
8. FIXED-WING Avail/Type/Make-Model/ FAA N# / Base(s)  
 AA-05 Siskiyou

Air Tankers : On request reload base open at Siskiyou

Lead Planes: On Request

Helibase location:  
 Siskiyou: 41 46.70 X 123 28.30  
 Butte Valley 41 53.250 X 121 58.550

7. FREQUENCY	AM	FM
Command Rptr Sage Net		172.3250 RX 162.2250 TX Tone 8 103.5
Forest Net Rptr YICC		171.5250 RX 165.4125 TX Tone 8 103.5
SKU Local for Command Cal Fire IA		151.3250 RX 159.3600 TX Tone 8 103.5 Tone 2 123.0
RW A/A FW A/A Air tactics	119.0750	166.6000
A/G Cmd (Ops, Divs)		169.2000
A/G Tac A/G CDF 1 IA ONLY		168.4000 151.2200 Tone 16 192.8 TX/RX
Tower Siskiyou Tanker Base/Helibase Coordination DECK for Siskiyou DECK for Butte Valley Cal Coord	120.275	168.3500 163.1000 156.0750 Tone 6 156.7 TX/RX
Air Guard		168.6250 Tone 1 110.9 TX



Map Updated: 7/5/2021 2209

Datum: North American 1983 0 0.75 1.5 Miles