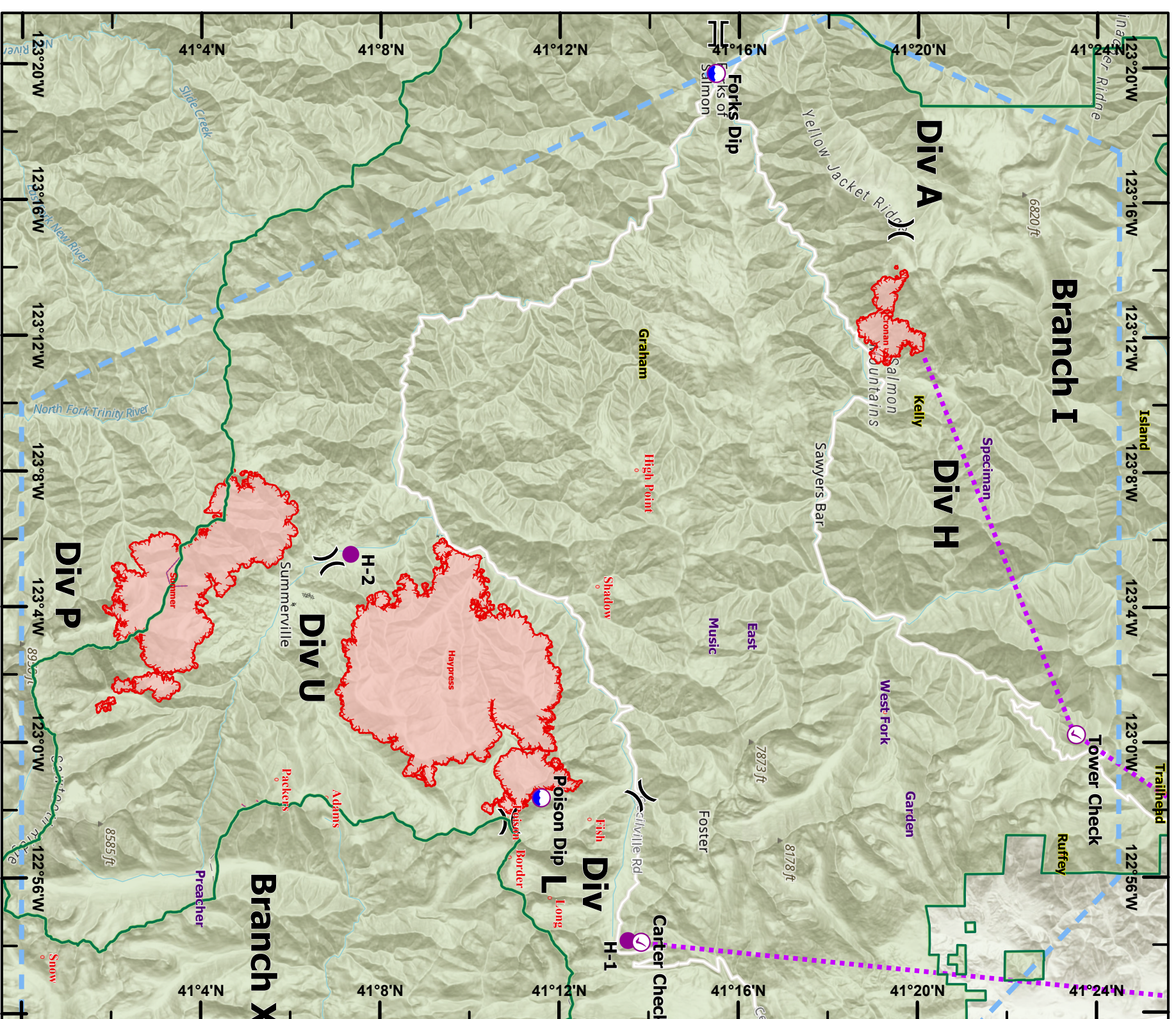





	Air Operations <ul style="list-style-type: none">Check PointDip Site	<ul style="list-style-type: none">HelispotHelibase	Assignment Breaks <ul style="list-style-type: none">Division BreakBranch Break	Logistics <ul style="list-style-type: none">Incident Command PostCompleted Dozer LineCompleted Hand Line	<ul style="list-style-type: none">Retardant DropRouteTemporary Flight RestrictionFire Edge	<p>Datum: NAD 1983 UTM Zone 10N</p>
--	--	---	--	---	---	-------------------------------------

IncidentName	FeatureCategory	Label	ElevationFeet	LatWGS84_DDM	LongWGS84_DDM
River Complex	Helispot	H-1	6200	41° 13.545' N	122° 54.138' W
River Complex	Helispot	H-2	2684	41° 07.355' N	123° 05.552' W
River Complex	Helibase	Scott Valley		41° 33.467' N	122° 51.297' W
River Complex	Dip Site	Poison Dip	6800	41° 11.610' N	122° 58.360' W
River Complex	Dip Site	Forks Dip	1500	41° 15.490' N	123° 19.790' W
River Complex	Check Point	Tower Check		41° 23.557' N	123° 00.228' W
River Complex	Check Point	Carter Check		41° 13.836' N	122° 54.088' W







0 1/4 2/4 5 Miles

<ul style="list-style-type: none"> Check Point Dip Site Helispot Division Break Branch Break Completed Dozer Line Completed Hand Line Retardant Drop Route 	<ul style="list-style-type: none"> Temporary Flight Restriction Fire Edge Wildfire Daily Fire Perimeter
--	---

Exported: 8/7/2021 11:09 PM
Datum: NAD 1983 UTM Zone 10N