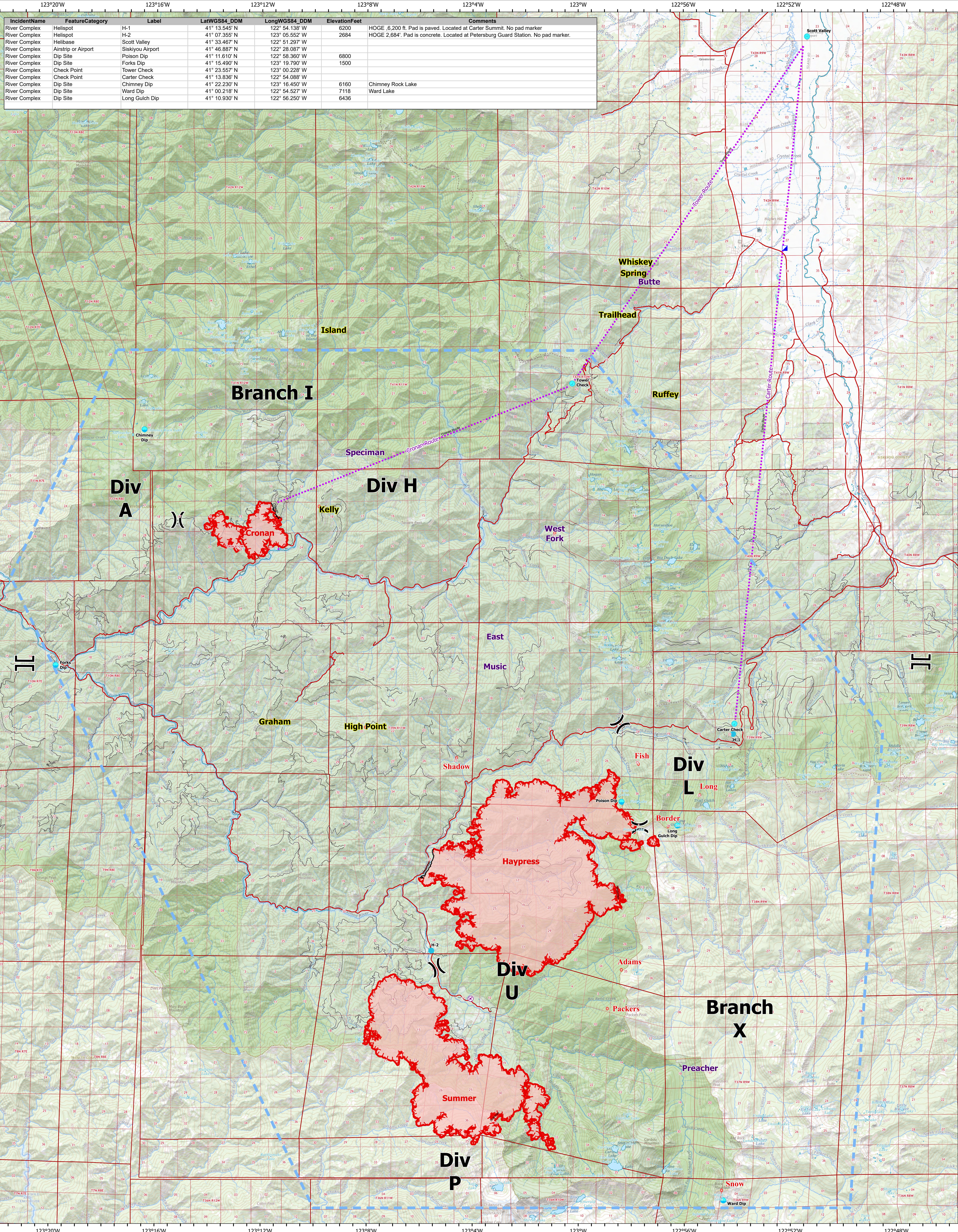


AIR OPERATIONS

River Complex

August 10, 2021



IncidentName	FeatureCategory	Label	LatWGS84_DDM	LongWGS84_DDM	ElevationFeet	Comments
River Complex	Helispot	H-1	41° 13.545' N	122° 54.138' W	6200	HOGUE 6,200 ft. Pad is paved. Located at Carter Summit. No pad marker
River Complex	Helispot	H-2	41° 07.355' N	123° 05.552' W	2684	HOGUE 2,684'. Pad is concrete. Located at Petersburg Guard Station. No pad marker.
River Complex	Helibase	Scott Valley	41° 33.467' N	122° 51.297' W		
River Complex	Airstrip or Airport	Siskiyou Airport	41° 46.887' N	122° 28.087' W		
River Complex	Dip Site	Poison Dip	41° 11.610' N	122° 58.360' W	6800	
River Complex	Dip Site	Forks Dip	41° 15.490' N	123° 19.790' W	1500	
River Complex	Check Point	Tower Check	41° 23.557' N	123° 00.228' W		
River Complex	Check Point	Carter Check	41° 13.936' N	122° 54.088' W		
River Complex	Dip Site	Chimney Dip	41° 22.230' N	123° 16.460' W	6160	Chimney Rock Lake
River Complex	Dip Site	Ward Dip	41° 00.218' N	122° 54.527' W	7118	Ward Lake
River Complex	Dip Site	Long Gulch Dip	41° 10.930' N	122° 56.250' W	6436	

Label_Point

Air Operations

Airstrip or Airport

Check Point

Dip Site

Helispot

Helibase

Assignment Breaks

Division Break

Branch Break

Logistics

Incident Command Post

Route

Temporary Flight Restriction

Fire Edge

Contained Line

Wildfire Daily Fire Perimeter

Wilderness

Administrative Forest

0 0.5 1 2 3 4 Miles

Datum: NAD 1983 UTM Zone 10N