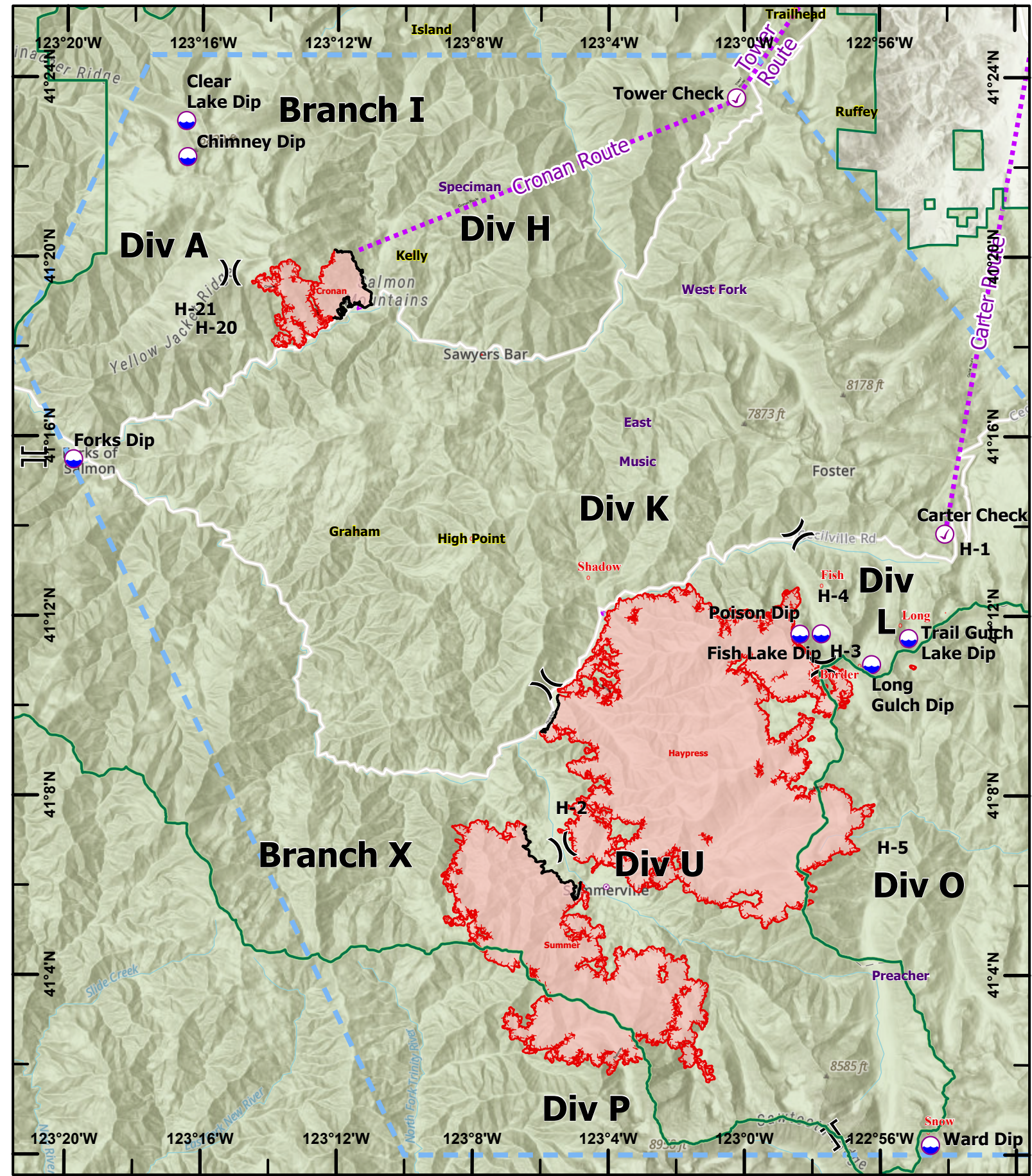



# PILOT MAP

River Complex

August 16, 2021

Category	Label	Latitude	Longitude	Elevation	Comments
Check Point	Carter Check	41° 13.836' N	122° 54.088' W		
Check Point	Etna Check	41° 27.441' N	122° 51.139' W		ASGS had Planning redirect route line east from ICP and create "Etna Check"
Check Point	Tower Check	41° 23.557' N	123° 00.228' W		
Dip Site	Chimney Dip	41° 22.230' N	123° 16.450' W	6160	Chimney Rock Lake
Dip Site	Clear Lake Dip	41° 23.033' N	123° 16.487' W		
Dip Site	Fish Lake Dip	41° 11.618' N	122° 57.732' W		
Dip Site	Forks Dip	41° 15.490' N	123° 19.790' W	1500	
Dip Site	Long Gulch Dip	41° 10.930' N	122° 56.250' W	6436	
Dip Site	Poison Dip	41° 11.610' N	122° 58.360' W	6800	
Dip Site	Trail Gulch Lake Dip	41° 11.510' N	122° 55.157' W		
Dip Site	Ward Dip	41° 00.218' N	122° 54.527' W	7118	Ward Lake
Helispot	H-1	41° 13.195' N	122° 53.891' W	6200	HOGES 6,200 ft. Pad is paved. Located at Carter Summit. No pad marker
Helispot	H-2	41° 07.355' N	123° 05.552' W	2684	HOGES 2,684'. Pad is concrete. Located at Petersburg Guard Station. No pad marker.
Helispot	H-3	41° 11.472' N	122° 57.778' W	6016	Approved for Type 2
Helispot	H-4	41° 12.070' N	122° 57.840' W	5794	Approved for Type 3
Helispot	H-5	41° 06.468' N	122° 56.088' W	4795	Approved Type 2
Helispot	H-20	41° 18.030' N	123° 16.213' W	4801	Type 3 (Dusty)
Helispot	H-21	41° 18.452' N	123° 16.830' W	4519	Type 2 Approved
Helibase	Scott Valley	41° 33.467' N	122° 51.297' W		





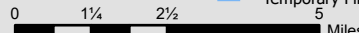
CA-KNF-006385

Airstrip or Airport  
Check Point  
Dip Site


Helispot  
Division Break

Branch Break  
Route  
Temporary Flight Restriction

Fire Edge  
Contained Line  
Wildfire Daily Fire Perimeter



0 1/4 2/4 5 Miles



Datum: NAD 1983 UTM Zone 10N