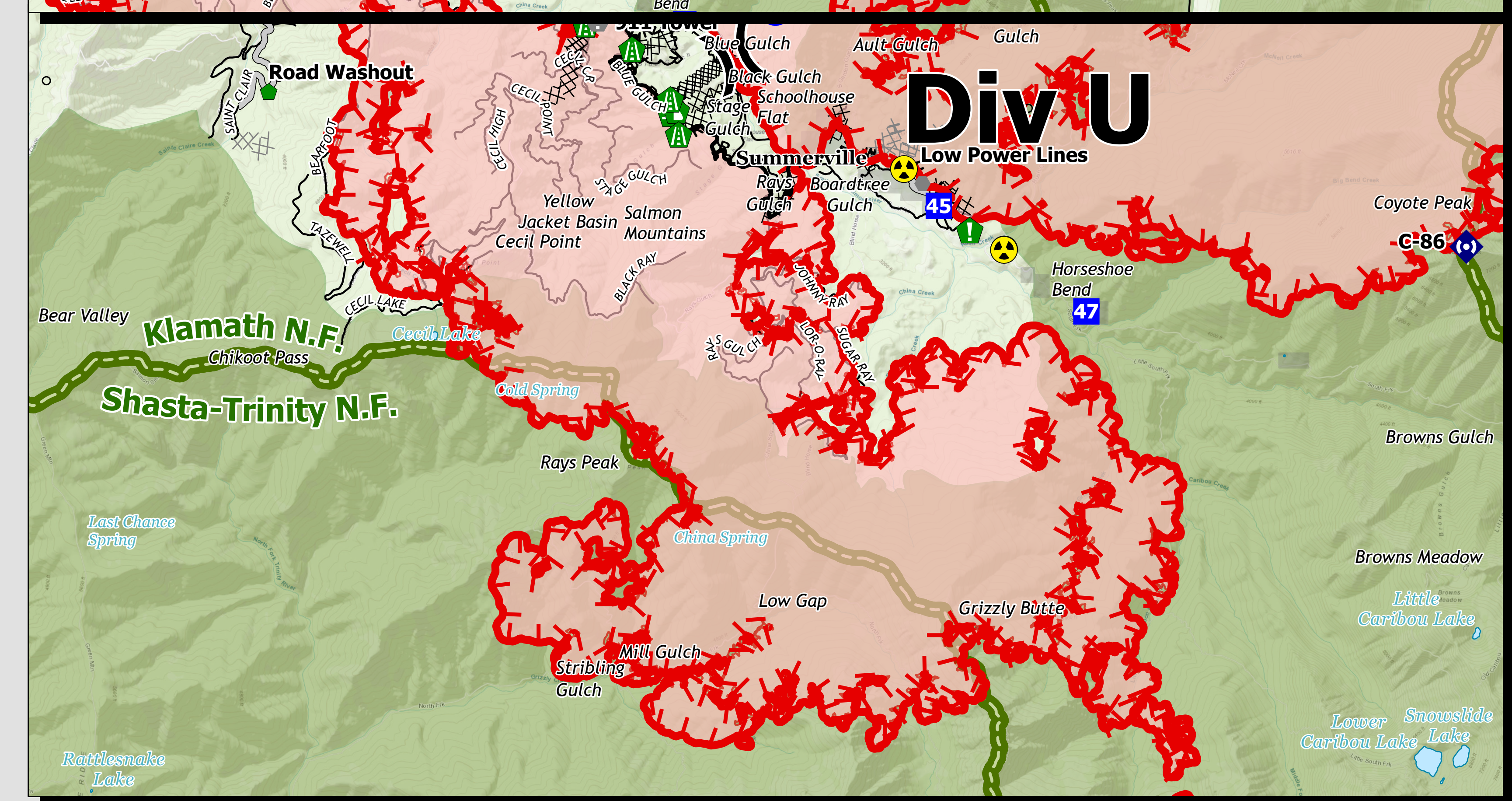
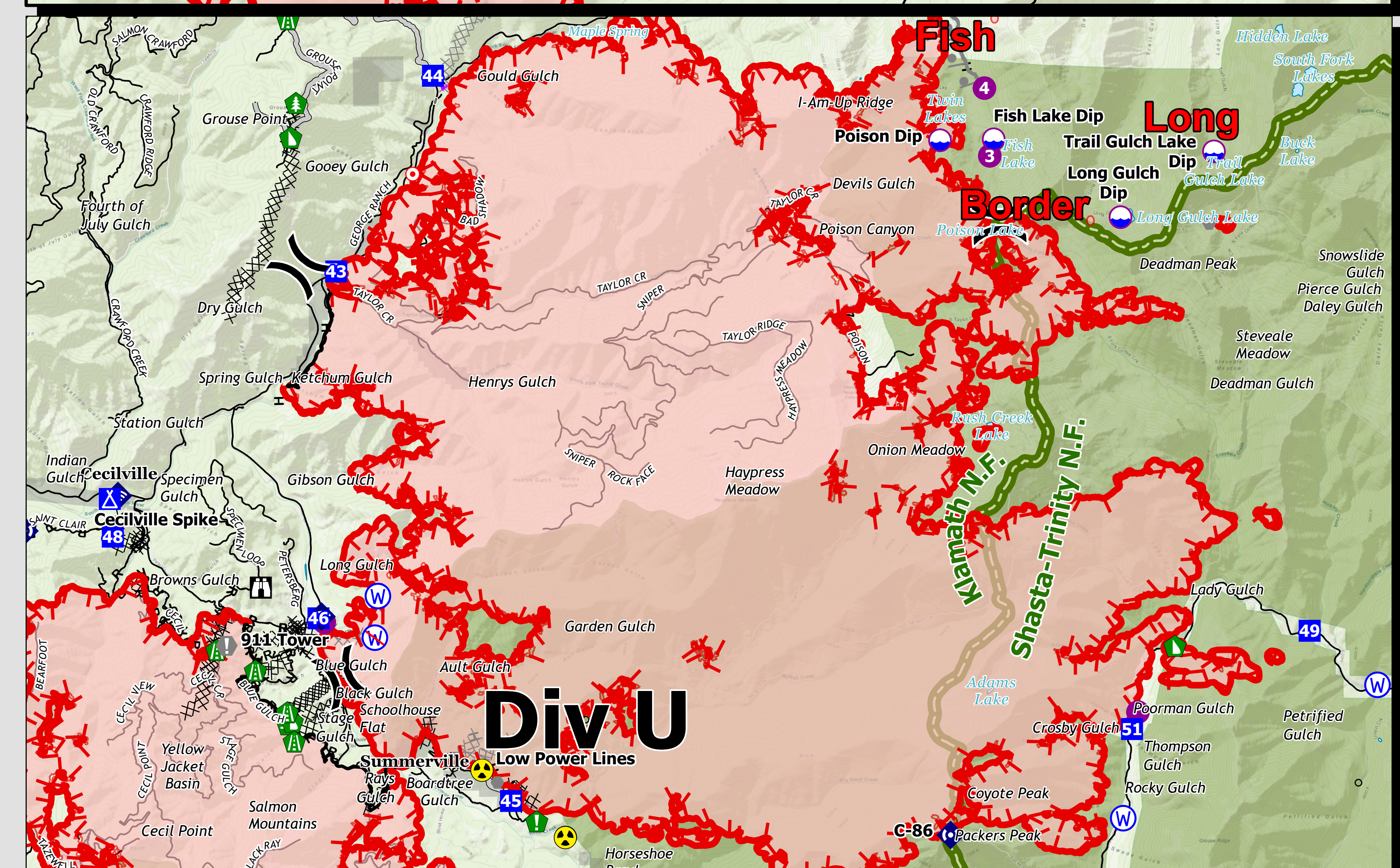
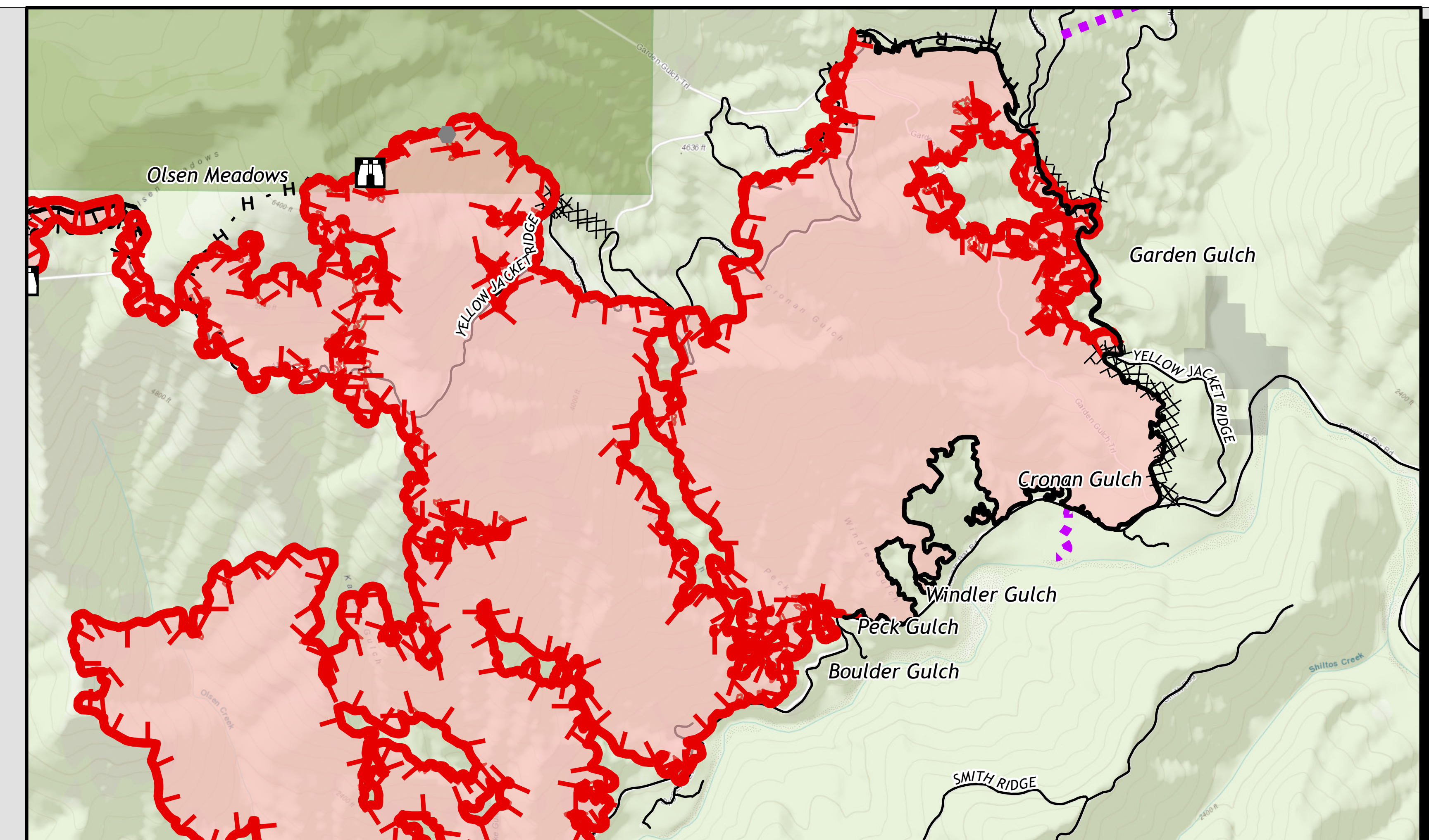
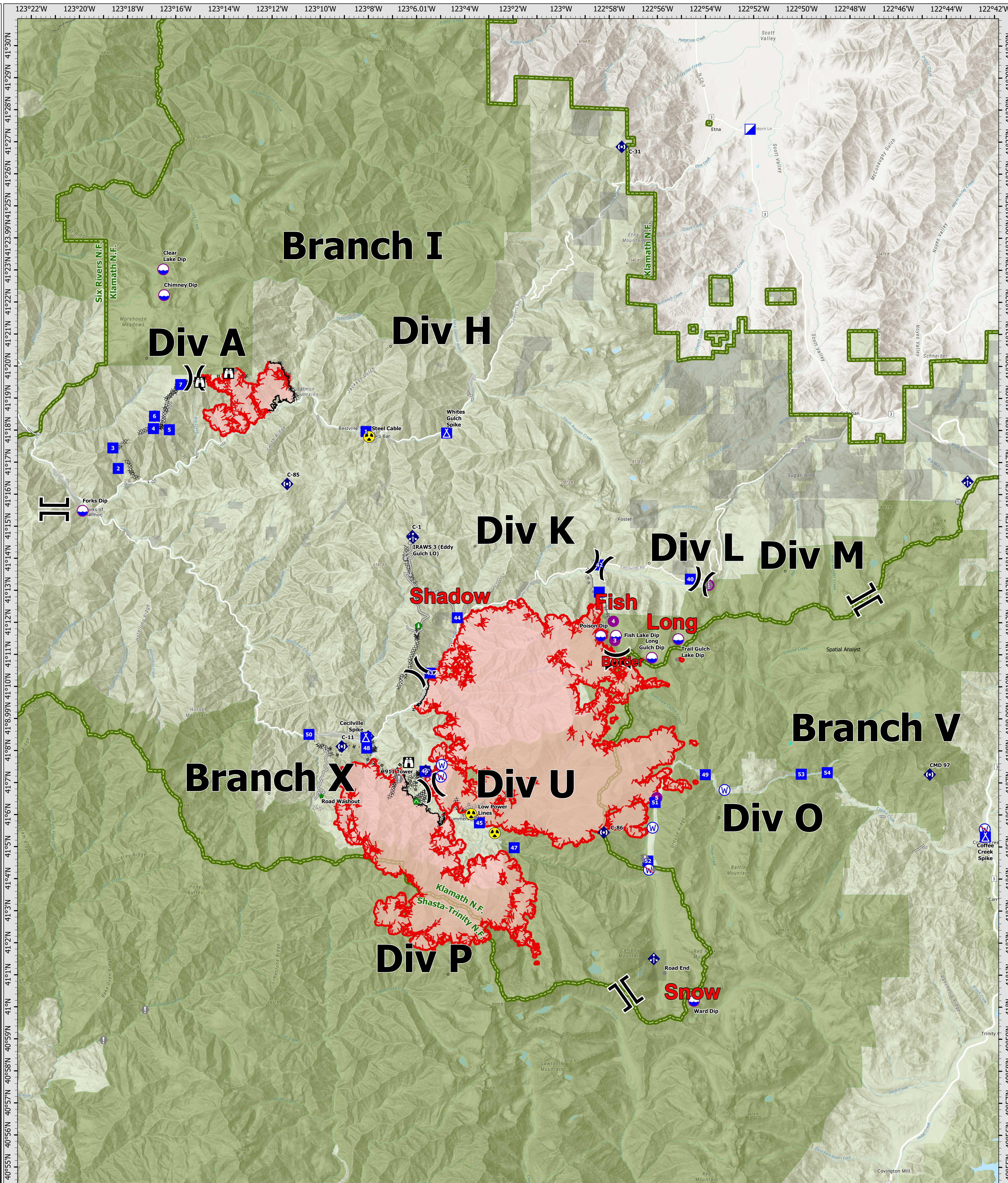


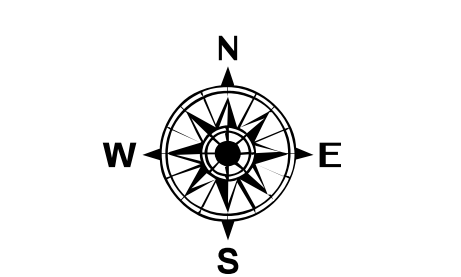
8/18/21 06:00

Briefing



**River Complex
CA-KNF-006385**
48,156 acres
IR updated 8/17/21
12:00

- | | | | | |
|-------------------------|------------------------|-----------------------|-------------------------------------|----------------------------|
| ○ Label Point | ■ Drop Point | ● Repair Point | ⊕ Water Source | — Contained Line |
| ● Dip Site | ⊠ Camp | ⊕ Hazard Tree | ⊕ Restricted Water Source | ■ Active |
| ● Helispot | ⊠ Lookout | ⊕ Culvert | ⊕ Completed Burnout | ▭ National Forest Boundary |
| ⊕ Division Break | ⊕ Hot Spot - Spot Fire | ⊕ Mobile Weather Unit | ⊕ Completed Dozer Line | ▭ Wilderness Area |
| ⊕ Branch Break | ⊕ Value at Risk | ⊕ Internet Access | ⊕ Completed Hand Line | ▭ PRIVATE |
| ⊕ Incident Command Post | ⊕ Other | ⊕ Repeater | ⊕ Completed Mixed Construction Line | — Access or Improved Road |
| | ⊕ Gate | ⊕ Hazard | ⊕ Completed Road as Line | — Other |
| | | | ⊕ Planned Burnout | ⊕ Fire Edge |
| | | | ⊕ Planned Dozer Line | |
| | | | ⊕ Planned Hand Line | |
| | | | ⊕ Planned Road as Line | |



0 1 2 4 Miles
Datum: North American 1983