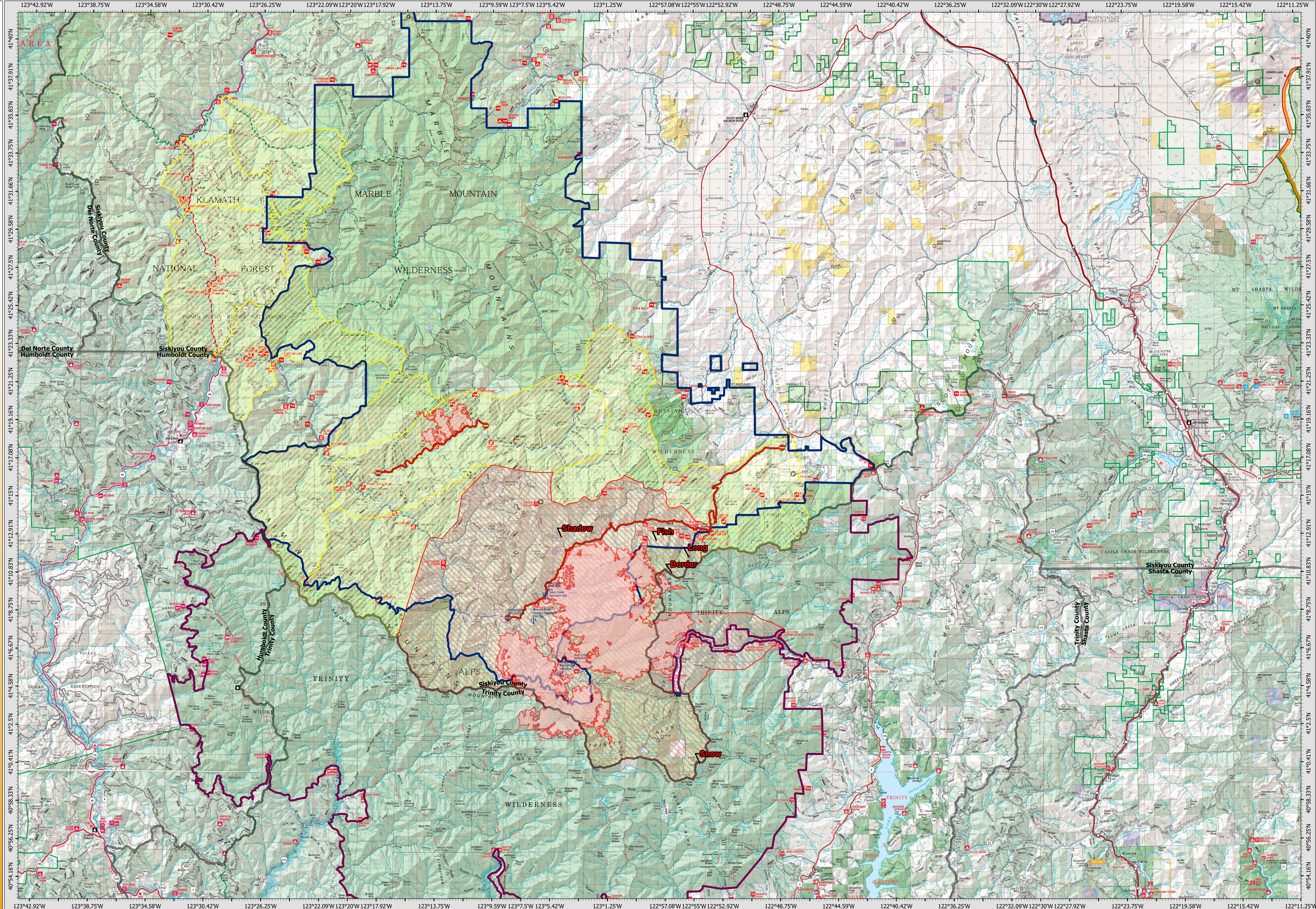


8/18/21 06:00

EVACUATION/ ROAD CLOSURES



**River Complex
CA-KNF-006385**

8/18/21 06:00

48,156 acres
IR updated 8/17/21 12:00

- | | | |
|-------------------------------|-------------------------|-------------------------|
| Wildfire Daily Fire Perimeter | Telecommunication Sites | Evacuation Areas |
| Klamath Closure | Road Blocks | Order |
| Trinity Closure | Road Closures | Warning |
| County Boundaries | Both Directions | |

