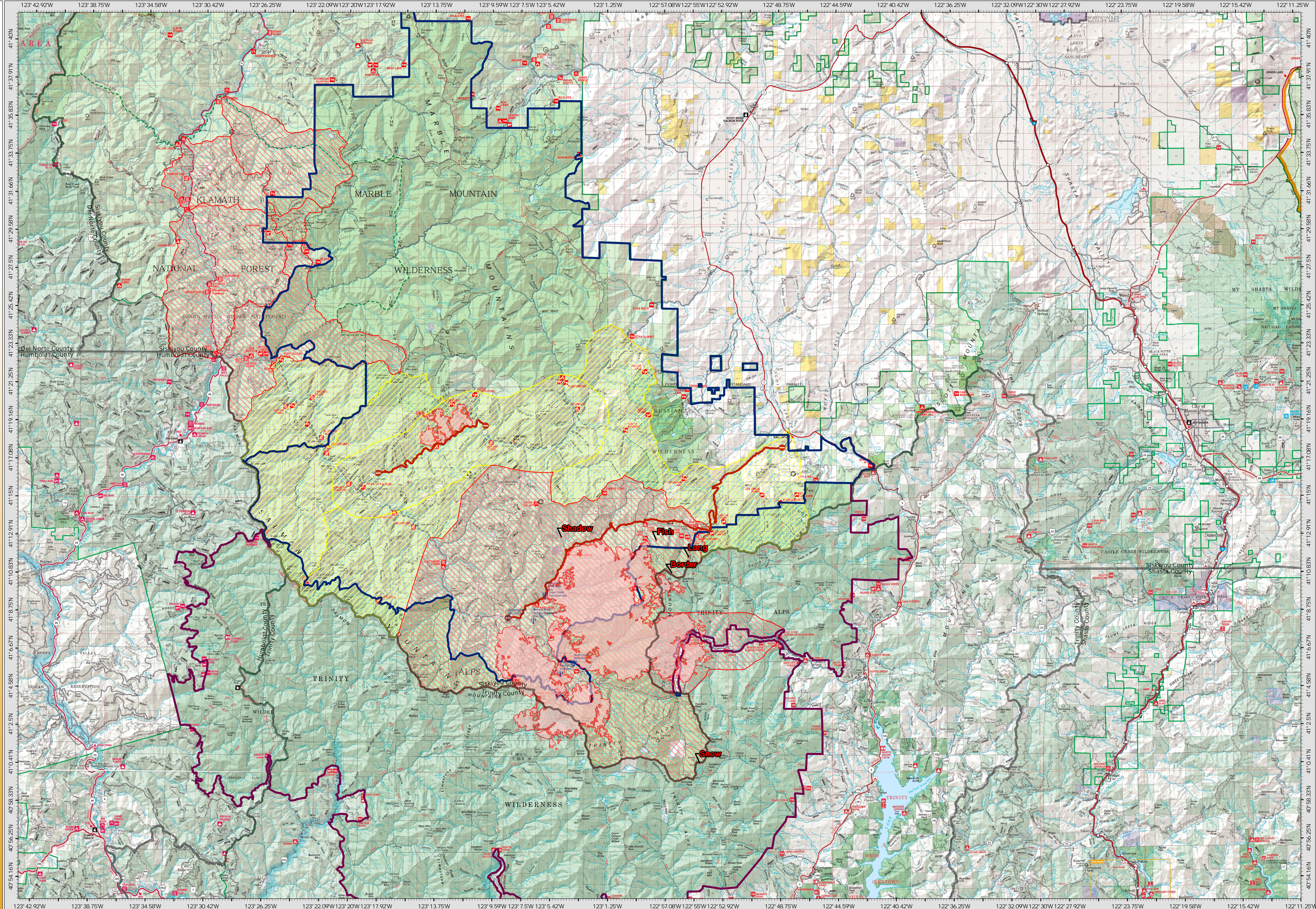


8/19/21 07:00

EVACUATION/ ROAD CLOSURES

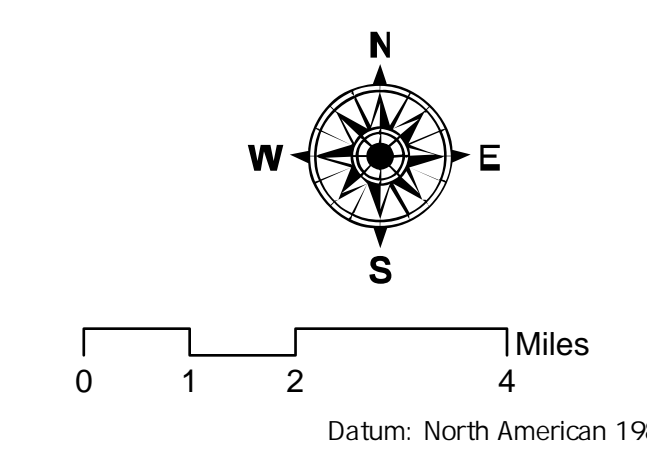


**River Complex
CA-KNF-006385**

8/19/21 07:00

53,033 acres
IR updated 8/18/21 12:00

- | | | |
|-------------------------------|-------------------------|------------------|
| Wildfire Daily Fire Perimeter | Telecommunication Sites | Evacuation Areas |
| Klamath Closure | Road Blocks | Order |
| Trinity Closure | Road Closures | Warning |
| County Boundaries | Both Directions | |



CI-MT 15 GISSS Updated: 8/18/2021 22:25
Datum: North American 1983