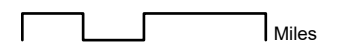
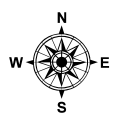


River Complex

CA-KNF-006385
8/25/21 07:00

86,492 acres
IR updated 8/23/21 20:50

- Check Point
- Dip Site
- Helispot
- Helibase
- Division Break
- Branch Break
- Incident Command Post
- Completed Dozer Line
- Route
- Temporary Flight Restriction
- Fire Edge
- Contained Line
- Wildfire Daily Fire Perimeter

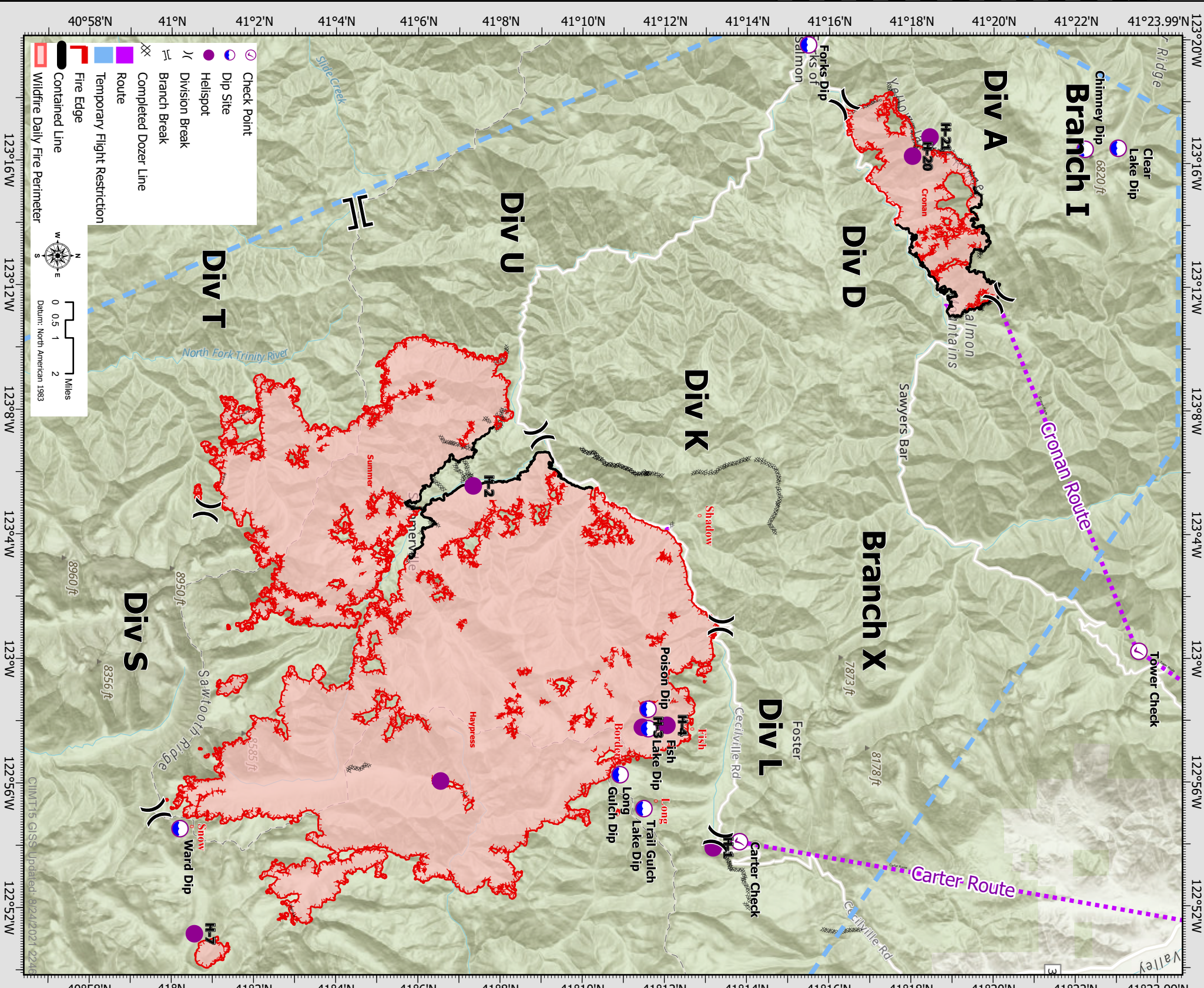


Datum: North American 1983

Point Type	Point Name	Latitude WGS84	Longitude WGS84	Elevation (Feet)	Comments
Airstrip or Airport	Carter Check	41° 05.981' N	123° 04.065' W		Private airstrip. Used by property owner for Cessna.
Check Point	Etna Check	41° 13.836' N	122° 54.088' W		
Check Point	Tower Check	41° 27.441' N	122° 51.139' W		ASGS had Planning redirect route line east from ICP and create "Etna Check"
Check Point	Chimney Dip	41° 23.557' N	123° 00.228' W		
Dip Site	Chimney Dip	41° 22.230' N	123° 16.450' W	6.160	Chimney Rock Lake
Dip Site	Clear Lake Dip	41° 23.033' N	123° 16.487' W		
Dip Site	Fish Lake Dip	41° 11.618' N	122° 57.732' W		
Dip Site	Forks Dip	41° 15.490' N	123° 19.790' W	1.500	
Dip Site	Long Gulch Dip	41° 10.930' N	122° 56.250' W	6.436	
Dip Site	Poison Dip	41° 11.610' N	122° 58.360' W	6.800	
Dip Site	Trail Gulch Lake Dip	41° 11.510' N	122° 55.157' W		
Dip Site	Ward Dip	41° 00.218' N	122° 54.527' W	7.118	Ward Lake
Helibase	Scott Valley	41° 33.467' N	122° 51.297' W		
Helispot	H-1	41° 13.195' N	122° 53.891' W	6.200	HOGGE, Pad is paved. Located at Carter Summit. No pad marker
Helispot	H-2	41° 07.355' N	123° 05.552' W	2.684	HOGGE, Pad is concrete. Located at Petersburg Guard Station. No pad marker.
Helispot	H-20	41° 18.030' N	123° 16.213' W	4.801	Type 3 (Dusty)
Helispot	H-21	41° 18.452' N	123° 16.830' W	4.519	Type 2
Helispot	H-3	41° 11.472' N	122° 57.778' W	6.016	Type 2
Helispot	H-4	41° 12.070' N	122° 57.840' W	5.794	Type 3
Helispot	H-5	41° 06.561' N	122° 56.051' W	4.795	Type 2
Helispot	H-7	41° 00.564' N	122° 51.149' W		
Incident Command Post		41° 27.421' N	122° 52.153' W		

3. REMARKS (Safety Notes, Hazards, Air Operations Special Equipment, etc.):
NOTE: Give clear, concise direction when requesting missions: Location, contact and specifics
 Eg. 100 ft Long line.
 Hazards: Smoke, Visibility, non-incident aircraft, power lines and cables in drainage bottoms, snags.
 A30 and SIV main runway still open
 All GPS data to be collected in DEGREES, MINUTES, DECIMAL MINUTES format.
 Mail all costs to: 2021.river.finance@firenet.gov and Eleazar.martinez@usda.gov

7. FREQUENCIES	RX	TX	7. TONE	8. MEDIVAC SHIP INFORMATION
AIR TACTICS	168.7375	168.7375		Name: Day: Night:
ROTOR VICTOR	119.125	119.125		8HX DAY @ SCOTT VALLEY SHORT HAUL
AIR TO GROUND CMD	169.150	169.150		GUARD 820 NIGHT @ REDDING 2000-0800
AIR TO GROUND TAC	162.8125	162.8125		
DECK	168.350	168.350		
CMD RIVER	172.250	165.075		T2 123.0 T7 167.9 T10 107.2
CMD SALMON	172.400	164.125		T5 146.2 T6 156.7 T13 141.3
CALCORD	156.0750	156.0750	(T6) 156.7	(T6) 156.7
AIR GUARD	168.6250	168.6250		(T1) 110.9
TOWER	120.225	120.225		
TFR VICTOR	123.625	123.625		
Multiple CMDs	See 205			



CIUNIT15 GISSS Updated: 8/24/2021 02:45