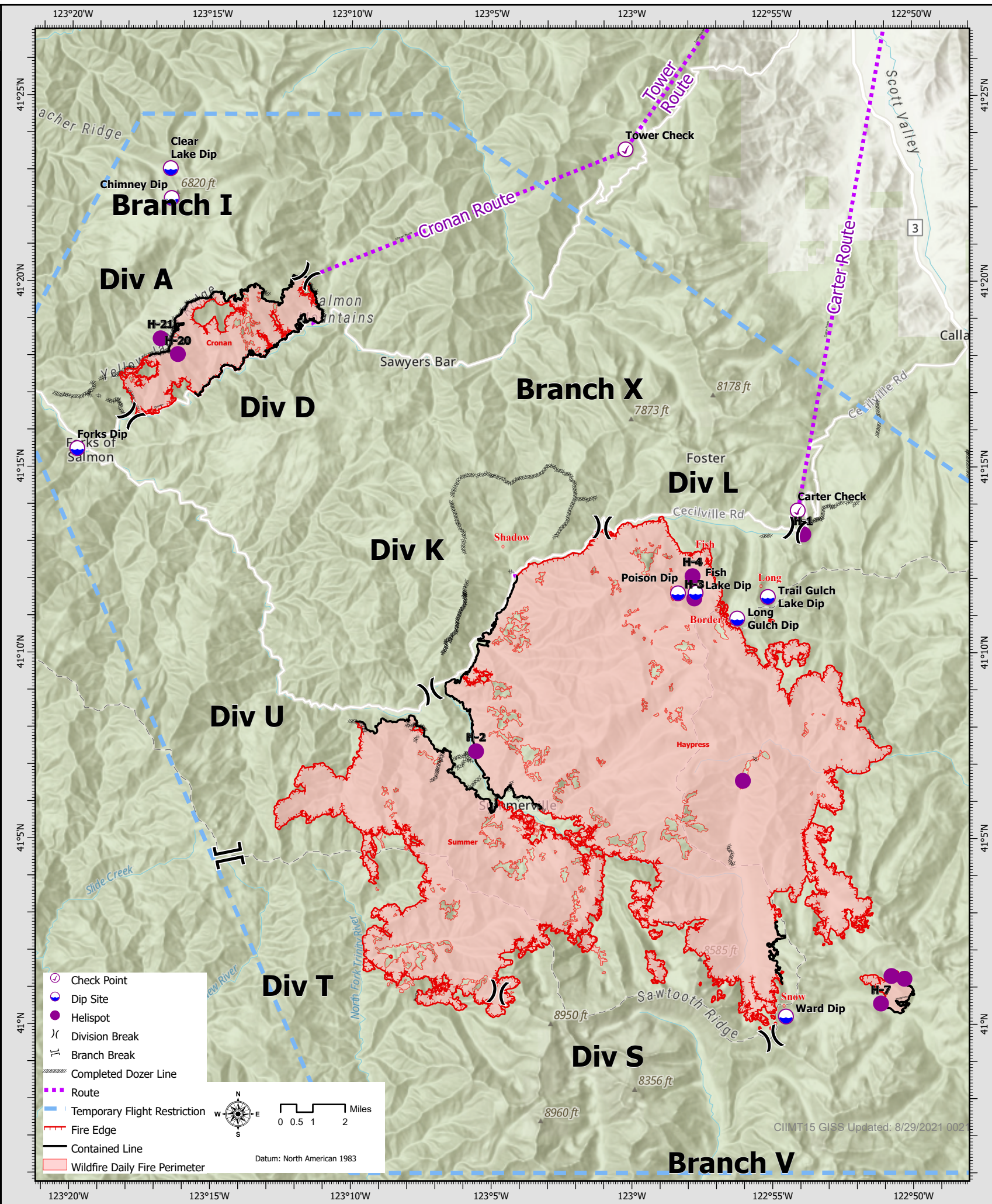


PILOT

Point Type	Point Name	Latitude WGS84	Longitude WGS84	Elevation (Feet)	Comments
Airstrip or Airport		41° 05.981' N	123° 04.065' W		Private airstrip. Used by property owner for Cessna.
Check Point	Carter Check	41° 13.836' N	122° 54.088' W		
Check Point	Etna Check	41° 27.441' N	122° 51.139' W		ASGS had Planning redirect route line east from ICP and create "Etna Check"
Check Point	Tower Check	41° 23.557' N	123° 00.228' W		
Dip Site	Chimney Dip	41° 22.230' N	123° 16.450' W	6,160	Chimney Rock Lake
Dip Site	Clear Lake Dip	41° 23.033' N	123° 16.487' W		
Dip Site	Fish Lake Dip	41° 11.618' N	122° 57.732' W		
Dip Site	Forks Dip	41° 15.490' N	123° 19.790' W	1,500	
Dip Site	Long Gulch Dip	41° 10.930' N	122° 56.250' W	6,436	
Dip Site	Poison Dip	41° 11.610' N	122° 58.360' W	6,800	
Dip Site	Trail Gulch Lake Dip	41° 11.510' N	122° 55.157' W		
Dip Site	Ward Dip	41° 00.218' N	122° 54.527' W	7,118	Ward Lake
Helibase		Helibase	122° 51.200' W		
Helibase	Scott Valley	41° 33.467' N	122° 51.297' W		
Helispot	H-1	41° 13.195' N	122° 53.891' W	6,200	HOGE, Pad is paved. Located at Carter Summit. No pad marker
Helispot	H-2	41° 07.355' N	123° 05.552' W	2,684	HOGE, Pad is concrete. Located at Petersburg Guard Station. No pad marker.
Helispot	H-20	41° 18.030' N	123° 16.213' W	4,801	Type 3 (Dusty)
Helispot	H-21	41° 18.452' N	123° 16.830' W	4,519	Type 2
Helispot	H-3	41° 11.472' N	122° 57.778' W	6,016	Type 2
Helispot	H-4	41° 12.070' N	122° 57.840' W	5,794	Type 3
Helispot	H-5	41° 06.561' N	122° 56.051' W	4,795	Type 2
Helispot	H-7	41° 00.564' N	122° 51.149' W		
Helispot	H-8	41° 01.303' N	122° 50.775' W		
Helispot	H-9	41° 01.230' N	122° 50.313' W		
Incident Command Post		41° 27.421' N	122° 52.153' W		

3. REMARKS (Safety Notes, Hazards, Air Operations Special Equipment, etc.):
NOTE: Give clear, concise direction when requesting missions: Location, contact and specifics
Eg. 100 ft Long line.
Hazards: Smoke, Visibility, non-incident aircraft, power lines and cables in drainage bottoms, snags.
A30 and SIY main runway still open
All GPS data to be collected in DEGREES, MINUTES, DECIMAL MINUTES format.
Mail all costs to: 2021.river.finance@firenet.gov and Eleazar.martinez@usda.gov

7.					8.	
FREQUENCY	RX	TONE	TX	TONE	AM/FM	MEDIVAC SHIP INFORMATION
						Day: Night:
AIR TACTICS	168.7375		168.7375		FM	Name:
ROTOR VICTOR	119.125		119.125		AM	8HX DAY @ SCOTT VALLEY SHORT HAUL
AIR TO GROUND CMD	169.150		169.150		FM	GUARD 822 @ REDDING
AIR TO GROUND TAC DECK	162.8125		162.8125		FM	24-hour coverage NVG hoist capable
CMD RIVER	172.250		165.075	T2 123.0 T7 167.9 T10 107.2	FM	
CMD SALMON	172.400		164.125	T5 146.2 T6 156.7 T13 141.3	FM	
CALCORD	156.0750	(T6) 156.7	156.0750	(T6) 156.7	FM	
AIR GUARD	168.6250		168.6250	(T1) 110.9	FM	
TOWER	120.225		120.225		AM	
TFR VICTOR	123.625		123.625		AM	
Multiple CMDs	See 205					



CIIMT15 GISS Updated: 8/29/2021 002