

009  
40° 58.497' N  
123° 8.696' W  
Smoking Snag  
Div S

011  
40° 58.569' N  
123° 8.349' W  
Smoking Stump  
Div S

007  
40° 58.000' N  
123° 8.420' W  
Ash Piles  
Div S

012  
40° 57.824' N  
123° 7.018' W  
Ash Pile  
Div S

024  
40° 58.090' N  
123° 5.156' W  
Ash Field  
Div S

025  
40° 58.501' N  
123° 3.610' W  
Smoldering Fire  
Div S

001  
40° 57.797' N  
123° 9.073' W  
Active Fire  
Div S

023  
40° 57.902' N  
123° 4.889' W  
Ash Pile  
Div S

005  
40° 57.680' N  
123° 8.617' W  
Smoldering Fire  
Div S

015  
40° 57.518' N  
123° 6.181' W  
Creeping Fire  
Div S

022  
40° 57.705' N  
123° 4.911' W  
Smoldering Fire  
Div S

002  
40° 57.534' N  
123° 9.035' W  
Creeping Fire  
Div S

004  
40° 57.518' N  
123° 8.778' W  
Ash Field  
Div S

013  
40° 57.405' N  
123° 7.181' W  
Ash Piles  
Div S

017  
40° 57.422' N  
123° 5.953' W  
Creeping Fire  
Div S

020  
40° 57.519' N  
123° 5.294' W  
Creeping Fire  
Div S

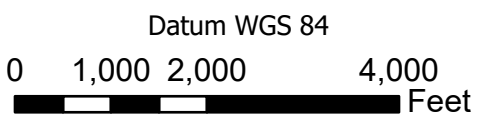
003  
40° 57.501' N  
123° 8.971' W  
Active Fire  
Div S

014  
40° 57.308' N  
123° 6.818' W  
Scattered Heat  
Div S

018  
40° 57.387' N  
123° 5.764' W  
Creeping Fire  
Div S

021  
40° 57.643' N  
123° 5.003' W  
Creeping Fire  
Div S

019  
40° 57.419' N  
123° 5.638' W  
Creeping Fire  
Div S



# River Complex

CA-KNF-006385

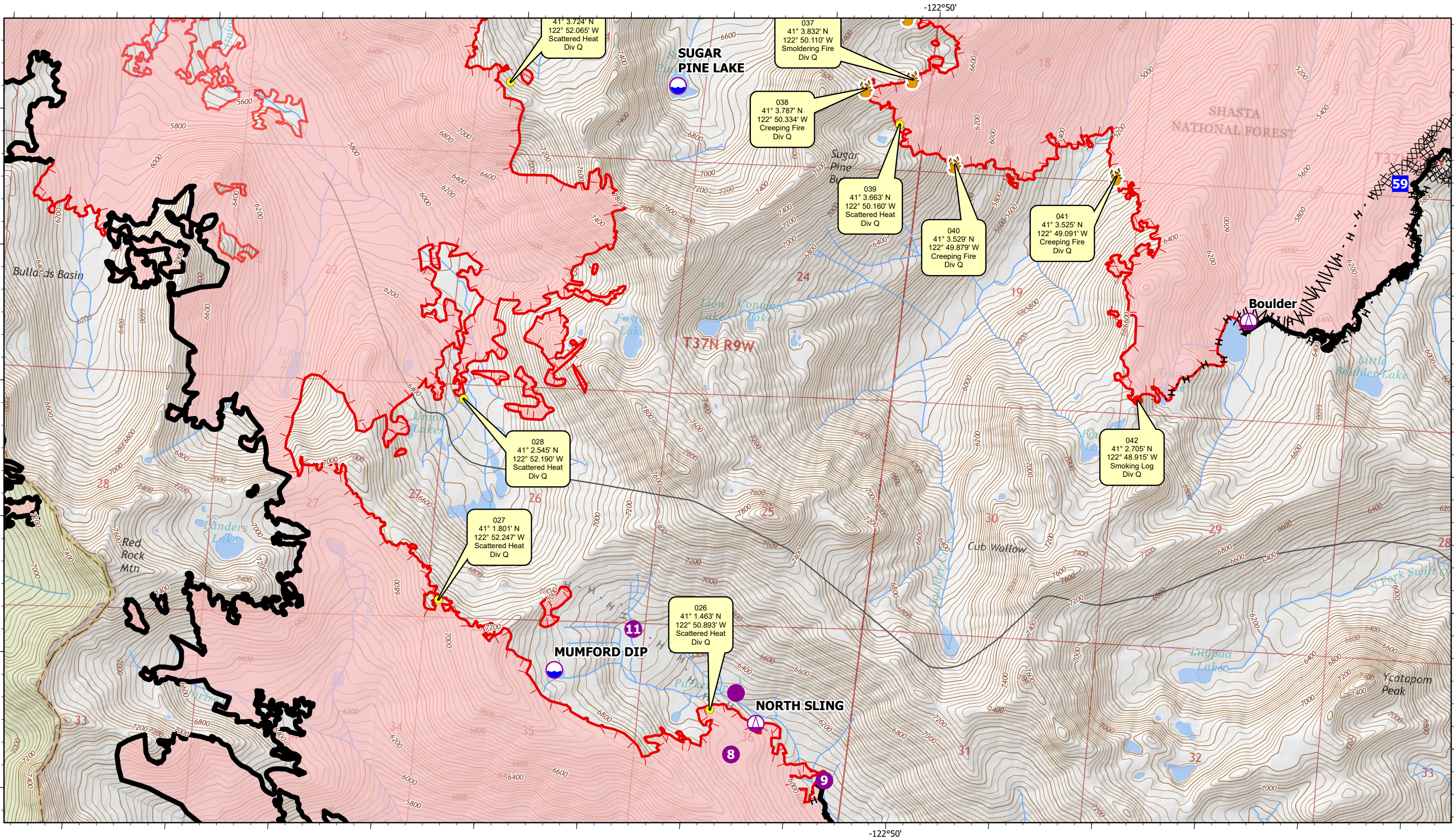
Infrared Map - Div S  
Infrared Data Captured on 20210921 @ 1050

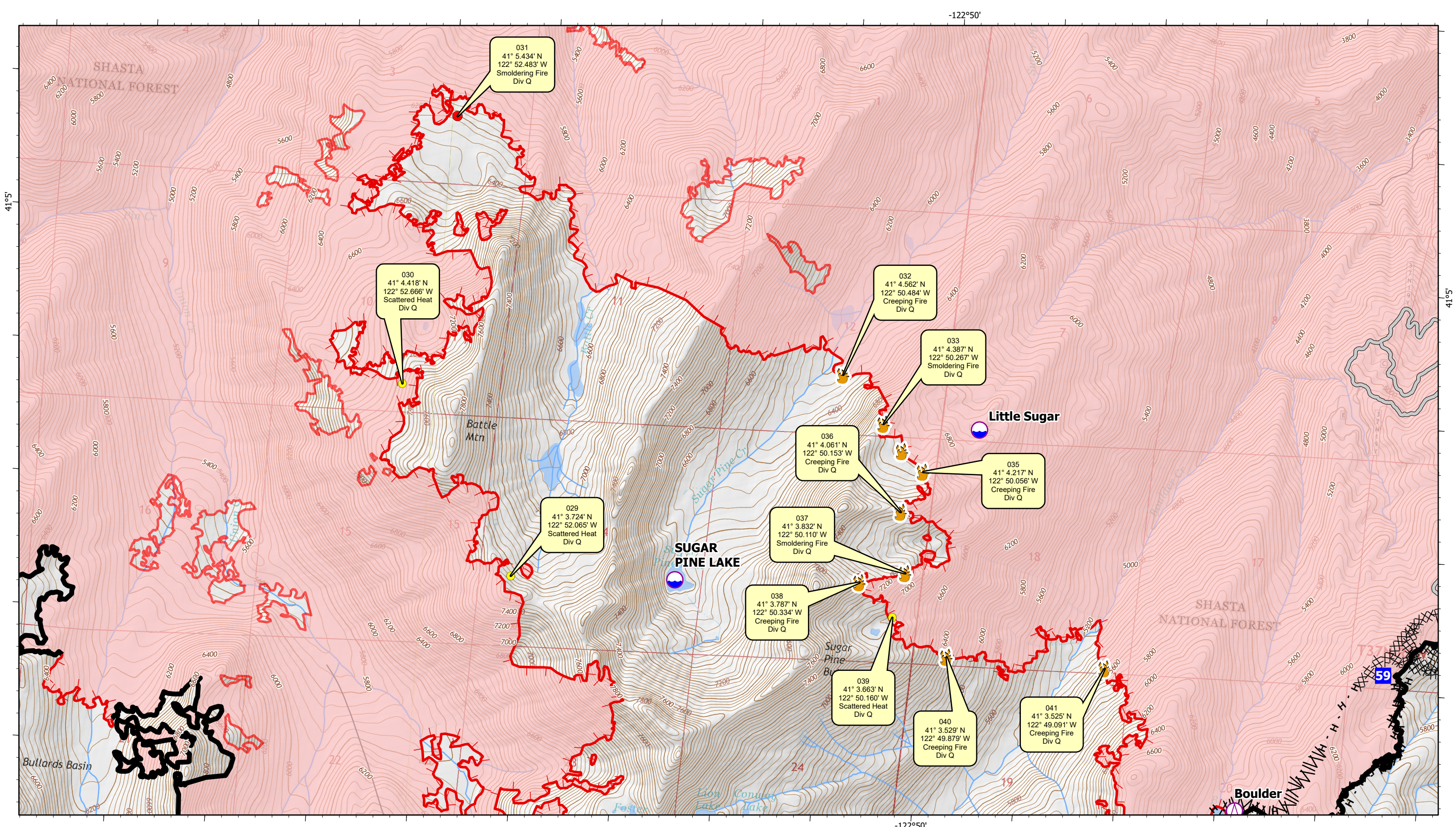


- Active Fire - Uncontrolled Spot Fire or Fire Front
- Creeping Fire - Smoker, 12" Flame Length or Less
- Hot Spot - Significant Priority
- Hot Spot - Moderate Priority



September 21, 2021





031  
41° 5.434' N  
122° 52.483' W  
Smoldering Fire  
Div Q

030  
41° 4.418' N  
122° 52.666' W  
Scattered Heat  
Div Q

032  
41° 4.562' N  
122° 50.484' W  
Creeping Fire  
Div Q

033  
41° 4.387' N  
122° 50.267' W  
Smoldering Fire  
Div Q

035  
41° 4.217' N  
122° 50.056' W  
Creeping Fire  
Div Q

029  
41° 3.724' N  
122° 52.065' W  
Scattered Heat  
Div Q

037  
41° 3.832' N  
122° 50.110' W  
Smoldering Fire  
Div Q

038  
41° 3.787' N  
122° 50.334' W  
Creeping Fire  
Div Q

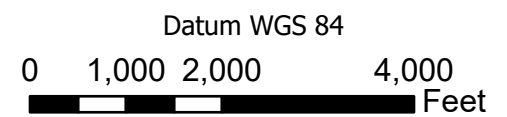
039  
41° 3.663' N  
122° 50.160' W  
Scattered Heat  
Div Q

040  
41° 3.529' N  
122° 49.879' W  
Creeping Fire  
Div Q

041  
41° 3.525' N  
122° 49.091' W  
Creeping Fire  
Div Q



- Active Fire - Uncontrolled Spot Fire or Fire Front
- Creeping Fire - Smoker, 12" Flame Length or Less
- Hot Spot - Significant Priority
- Hot Spot - Moderate Priority



# River Complex

CA-KNF-006385





Infrared Map - Div Q - Page 2  
Infrared Data Captured on 20210921 @ 1050





**INFRARED MAPPING**  
VETERAN'S EMERGENCY TECHNICAL SERVICES

**INFRARED MAP LEGEND**

-  Hot Spot - Moderate Priority (Heat above 200°, Little Vegetation in Vicinity)
-  Hot Spot - Significant Priority (Heat above 200°, Unburned Vegetation in Vicinity)
-  Creeping Fire - Smoker, 12" Flame Lengths or Less
-  Active Fire - Uncontained Spot Fire or Fire Front

GPS Coordinates are in Degrees & Decimal Minutes (DD MM.mmmm')

Datum is WGS 84 (unless otherwise noted on map) Ex. N 37° 44.575'  
W -119° 32.101'

Date and Time is when the intelligence was gathered

Heat Sources are normally acquired within a 400 foot strip, 200 feet inside and 200 feet outside the fire line or fire front (wider strips are flown as necessary and are labeled on infrared map).

**LIMITS TO INFRARED AND GPS INFORMATION**

Under the best conditions heat sources less than 4 to 6 inches in diameter are inconsistent.

Heat sources under heavy canopy or in large rock piles are difficult to verify.

Accuracy of positive identification of heat sources is 90%

Accuracy of negative identification of heat sources is 10% to 20%. (Depending on canopy).

Accuracy of GPS coordinates is within 50 feet, 90% of the time.

**Infrared Labeling Details:**

