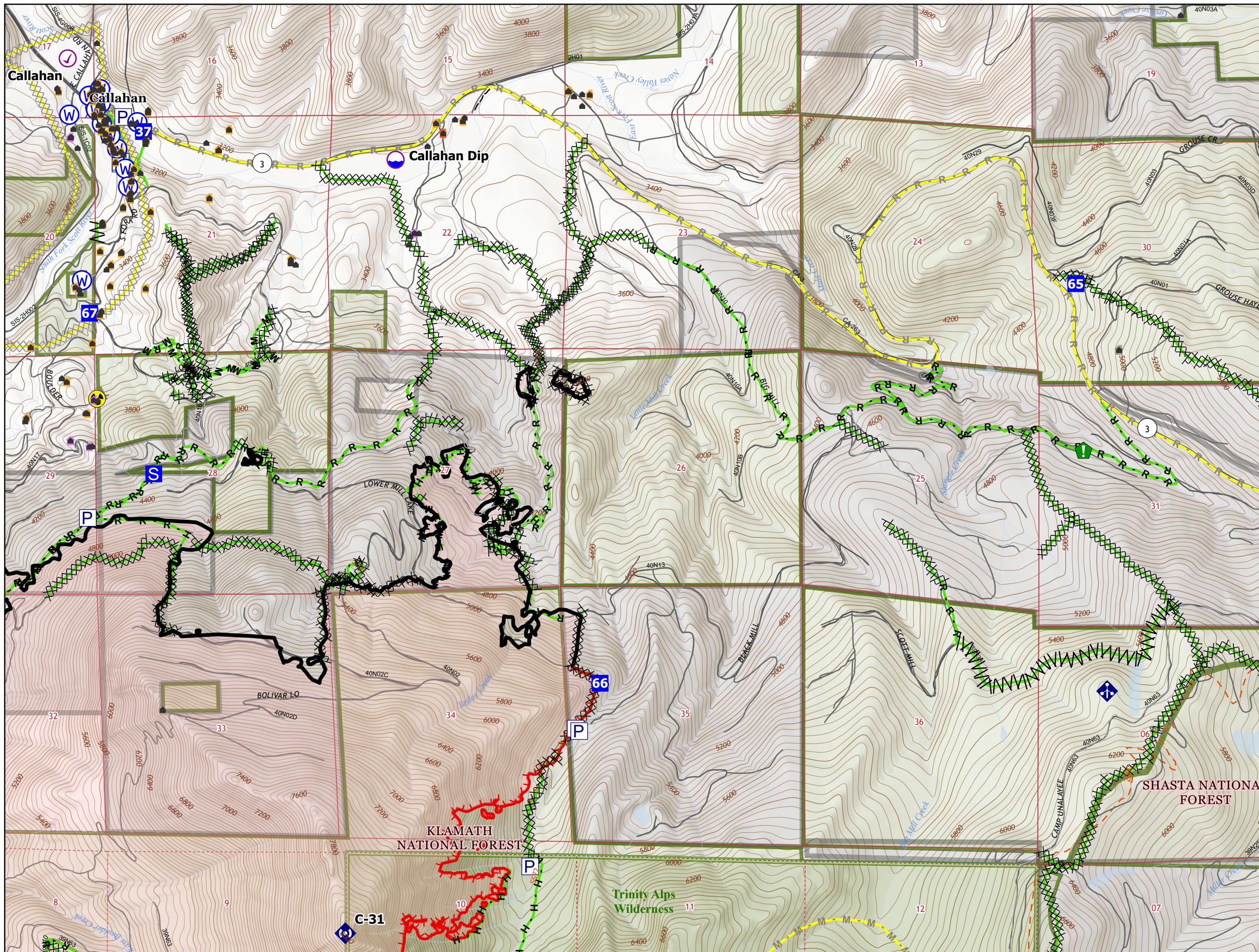


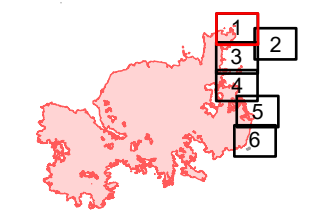
# FIELD OPERATIONS

Div M - Callahan

(Page 1 of 6)



- Structure Triage Point
- Defensible - Prep and Hold
- Non-Defensible - Prep and Leave
- Non-Defensible - Rescue Drive-By
- Unknown
- Dip Site
- Check Point
- Drop Point
- Staging Area
- Resource Location
- Mobile Weather Unit
- Repeater
- Hazard
- Water Source
- Pump
- Water Tank
- Completed Dozer Line
- Completed Fuel Break
- H - Completed Hand Line
- M - Completed Mixed Construction Line
- R - Completed Road as Line
- Planned Dozer Line
- H - Planned Hand Line
- M - Planned Mixed Construction Line
- R - Planned Road as Line
- Access or Improved Road
- Fire Edge
- Contained Line
- Completed
- Planned
- Wildfire Daily Fire Perimeter
- USFS Wilderness
- Forest Service
- Private Timberland



1:24,000

Miles 0 1/4 1/2

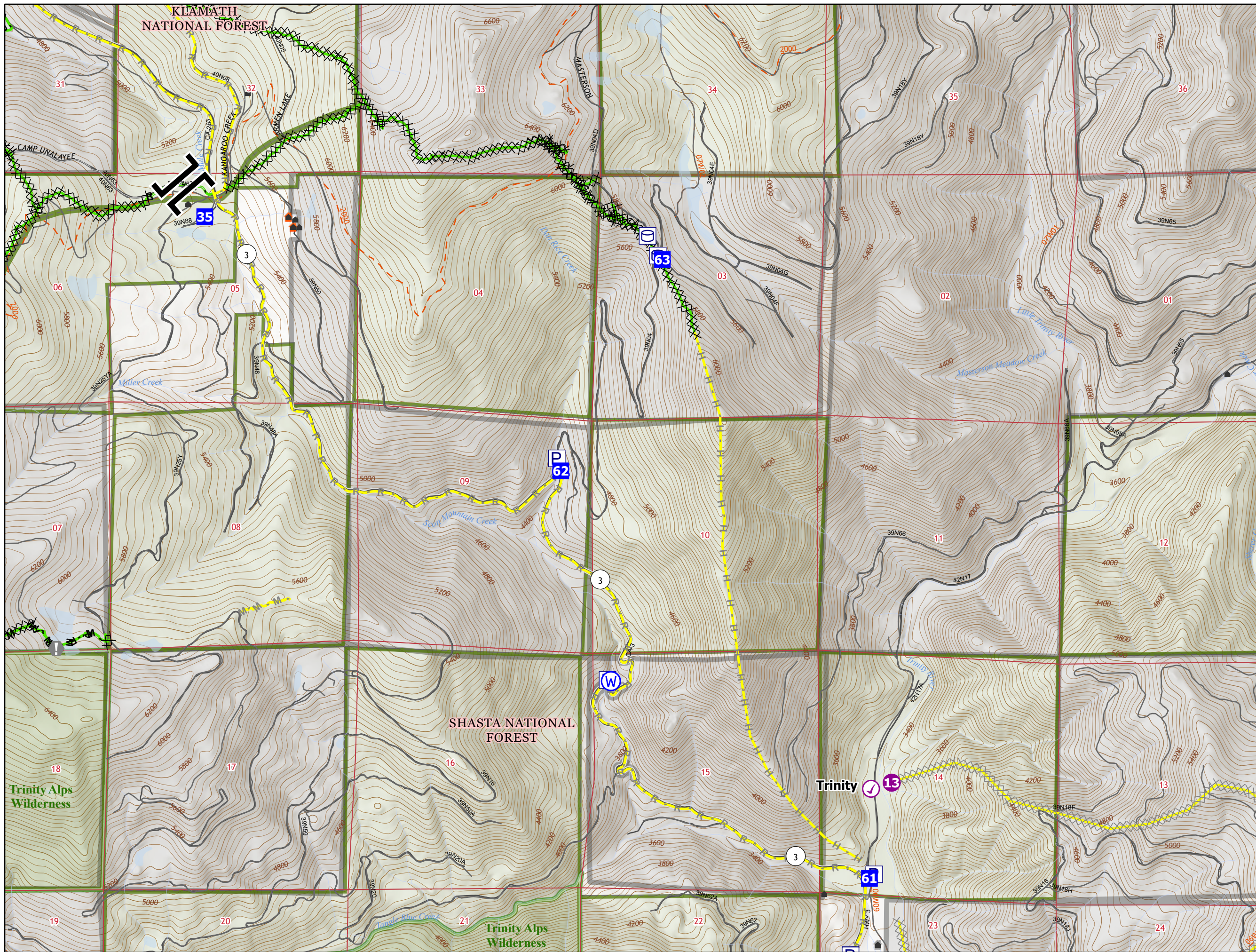
U.S. Forest Service

Last Updated 9/22/2021 22:06

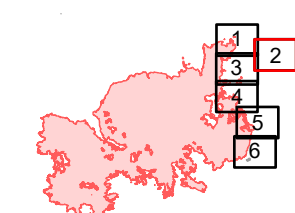
# FIELD OPERATIONS

## Div N - Scott Mountain Creek

(Page 2 of 6)



- Structure Triage Point
- Non-Defensible - Rescue Drive-By
- Unknown
- Check Point
- Helispot
- Branch Break
- Drop Point
- Value at Risk
- Water Source
- Pump
- Water Tank
- Completed Dozer Line
- Completed Fuel Break
- Completed Mixed Construction Line
- Completed Road as Line
- Planned Dozer Line
- Planned Hand Line
- Planned Mixed Construction Line
- Planned Road as Line
- Access or Improved Road
- Completed
- Planned
- USFS Wilderness
- Forest Service
- Private Timberland



1:24,000

Miles

0 1/4 1/2

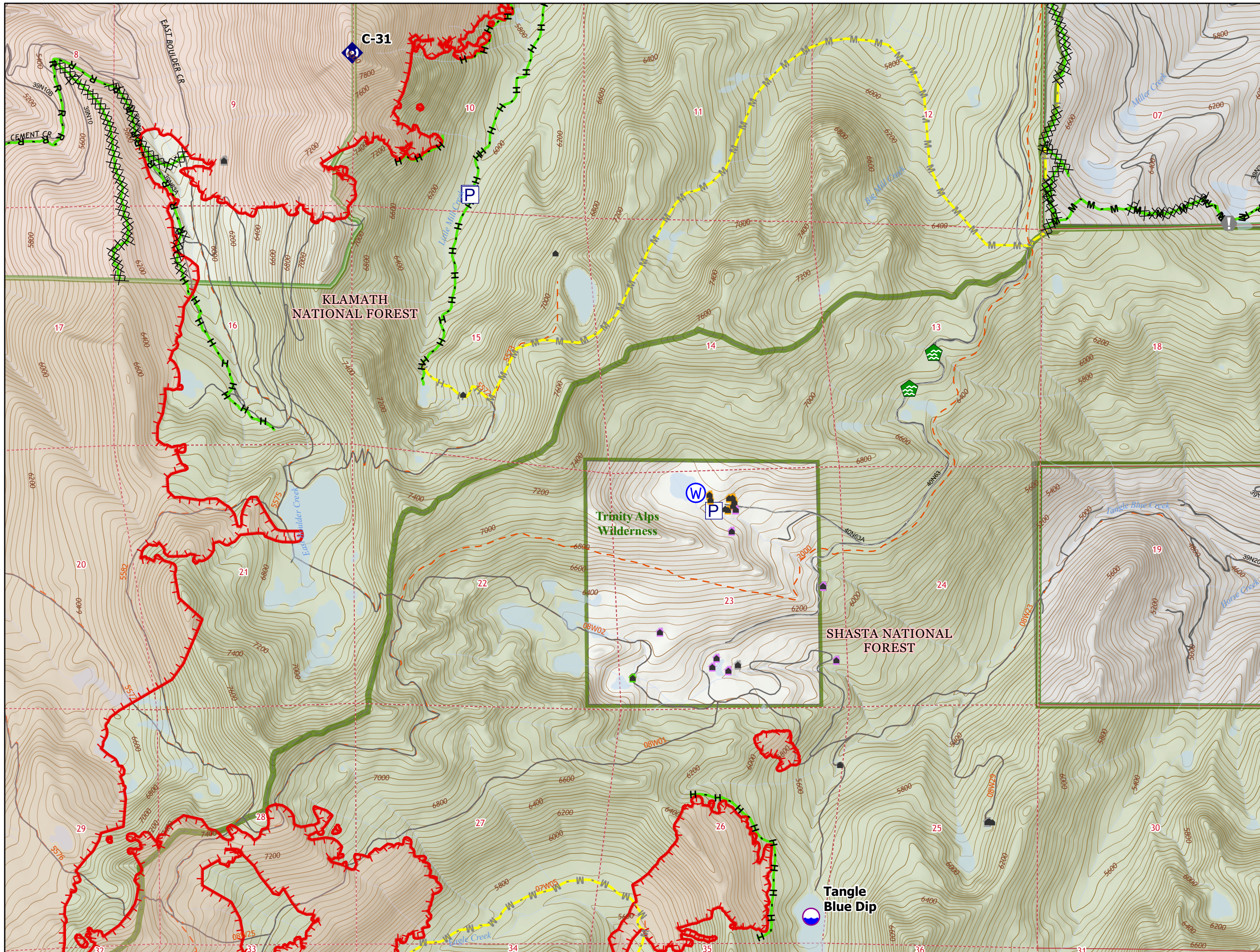
U.S. Forest Service

Last Updated 9/22/2021 22:07

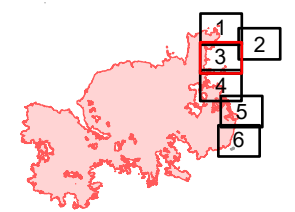
# FIELD OPERATIONS

## Div N - Mosquito Lake

(Page 3 of 6)



- Structure Triage Point
- Defensible - Stand Alone
- Defensible - Prep and Hold
- Non-Defensible - Prep and Leave
- Unknown
- Dip Site
- Value at Risk
- Water Development or Draft Site
- Repeater
- Water Source
- Pump
- Completed Dozer Line
- Completed Hand Line
- Completed Mixed Construction Line
- Completed Road as Line
- Planned Hand Line
- Planned Mixed Construction Line
- Access or Improved Road
- Fire Edge
- Completed
- Planned
- Wildfire Daily Fire Perimeter
- USFS Wilderness
- Forest Service
- Private Timberland



1:24,000

Miles

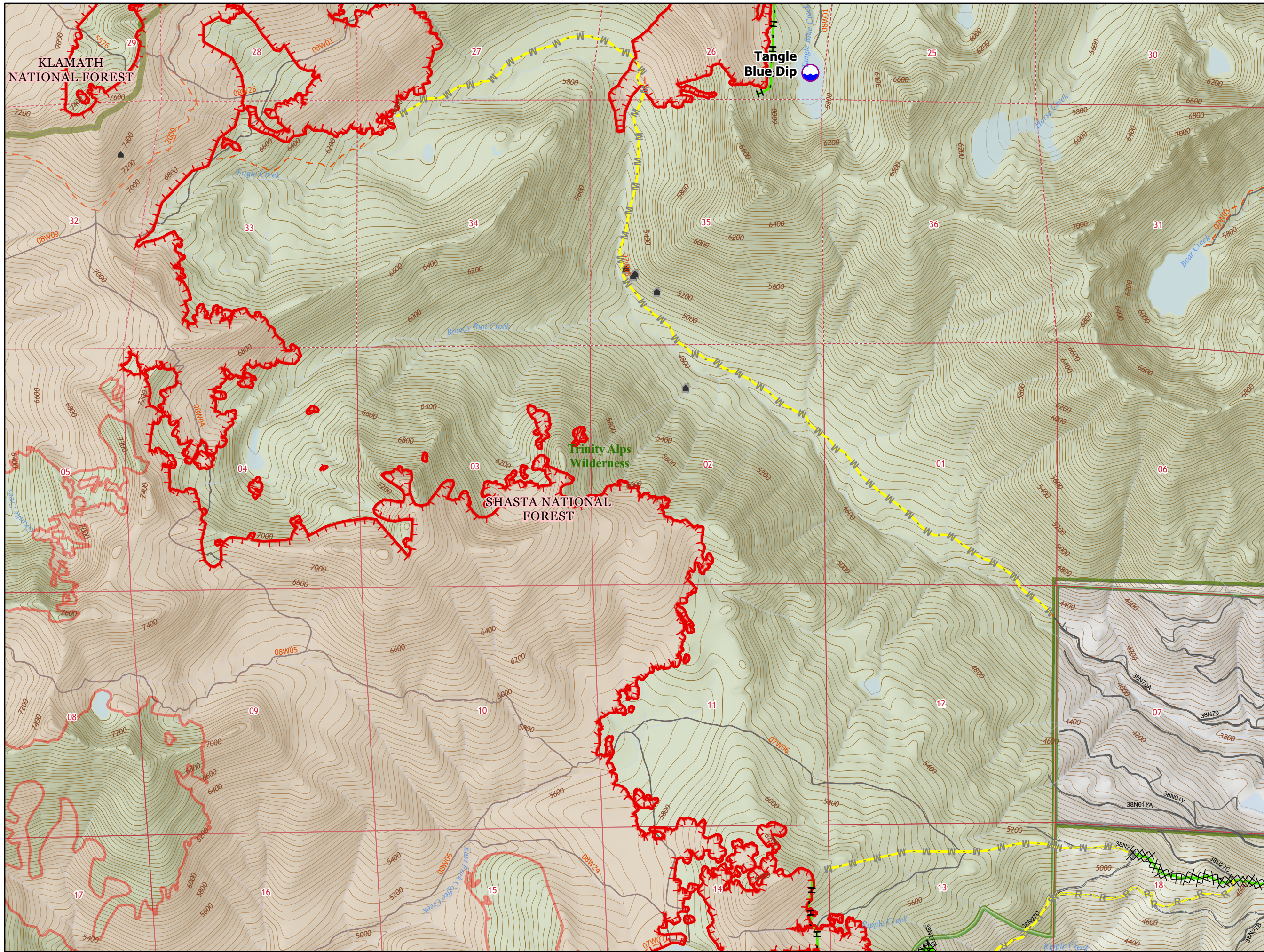
N


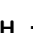





Last Updated  
9/22/2021  
22:07

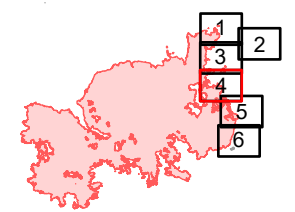
# FIELD OPERATIONS

Div N - Horse Creek

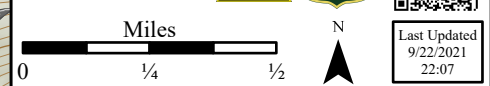
(Page 4 of 6)



-  Structure Triage Point
-  Unknown
-  Dip Site
-  Completed Dozer Line
-  Completed Hand Line
-  Completed Road as Line
-  Planned Mixed Construction Line
-  Planned Road as Line
-  Access or Improved Road
-  Fire Edge
-  Completed
-  Planned
-  Wildfire Daily Fire Perimeter
-  USFS Wilderness
-  Forest Service
-  Private Timberland



1:24,000

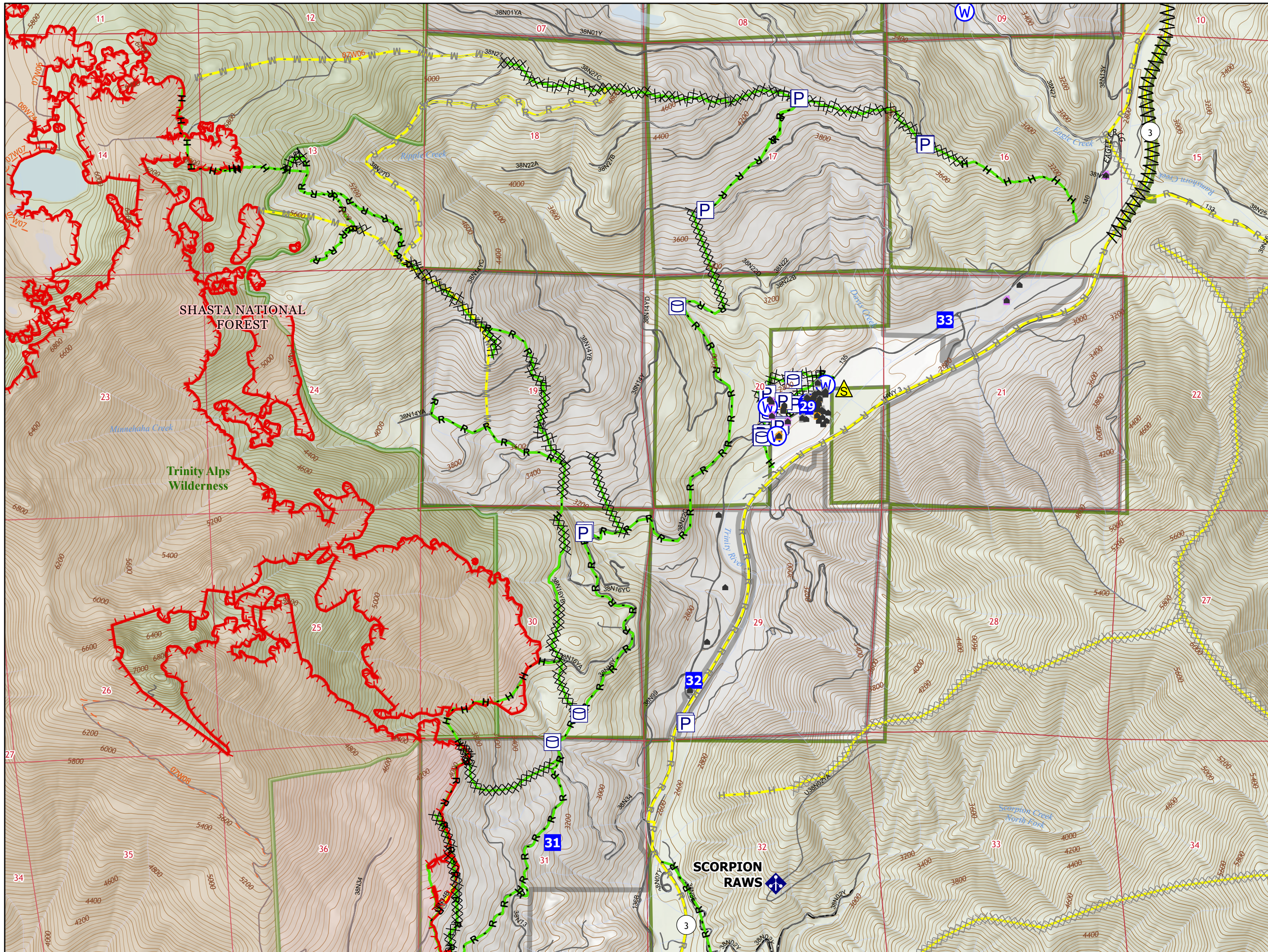


Last Updated  
9/22/2021  
22:07

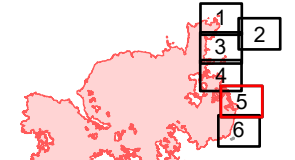
# FIELD OPERATIONS

## Div N - Eagle Creek

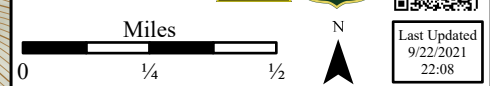
(Page 5 of 6)



- Structure Triage Point
- Defensible - Stand Alone
- Defensible - Prep and Hold
- Non-Defensible - Prep and Leave
- Unknown
- Drop Point
- Mobile Weather Unit
- Safety Zone
- Water Source
- Restricted Water Source
- Pump
- Water Tank
- Completed Dozer Line
- Completed Fuel Break
- Completed Hand Line
- Completed Road as Line
- Planned Dozer Line
- Planned Hand Line
- Planned Mixed Construction Line
- Planned Road as Line
- Access or Improved Road
- Fire Edge
- Completed
- Planned
- Wildfire Daily Fire Perimeter
- USFS Wilderness
- Forest Service
- Private Timberland



1:24,000

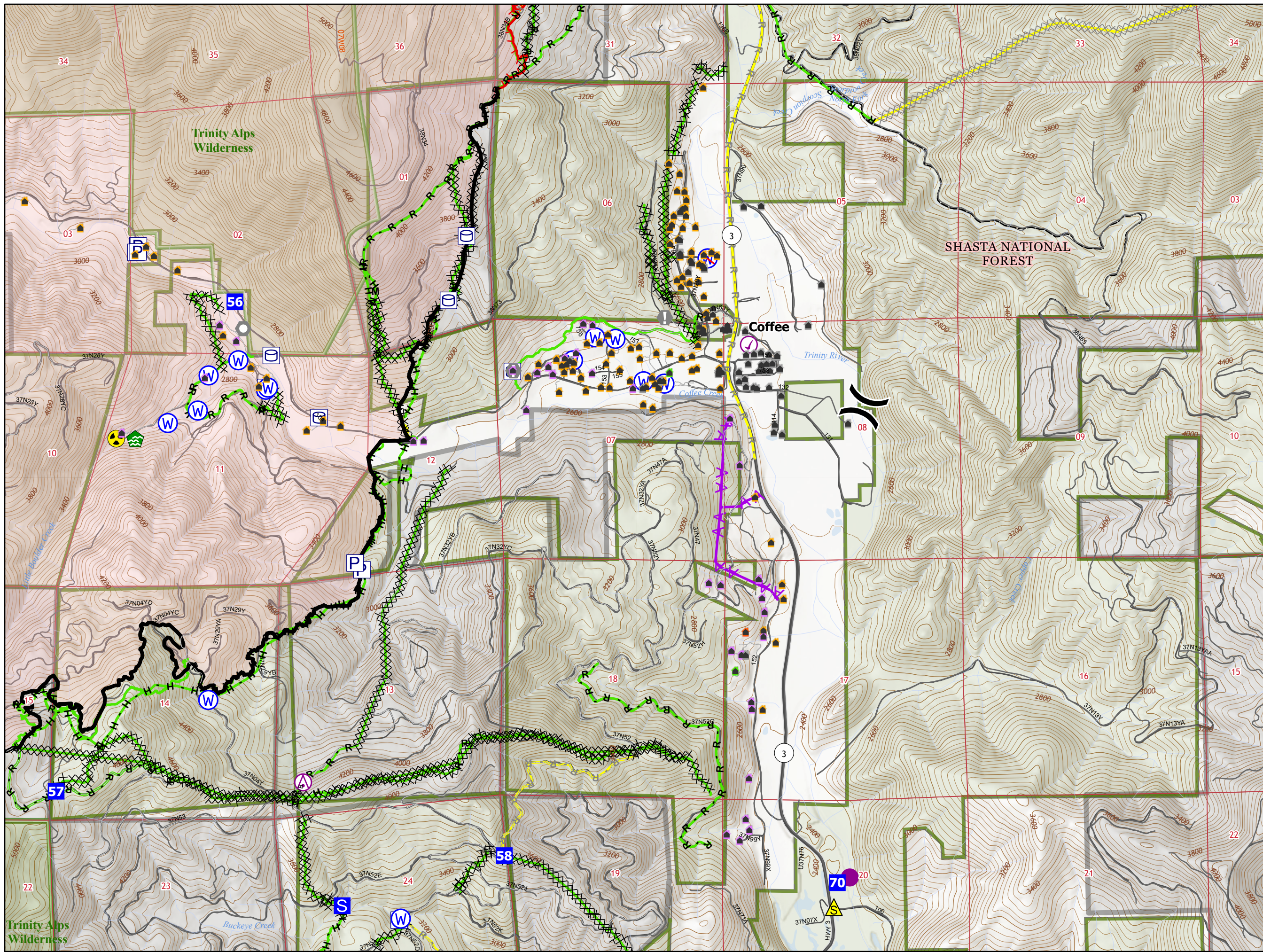


Last Updated  
9/22/2021  
22:08

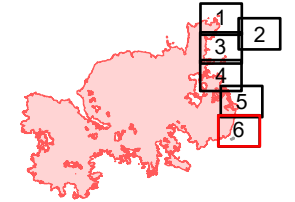
# FIELD OPERATIONS

## Div N/Q - Coffee Creek

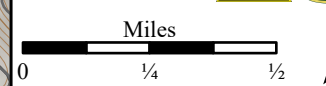
(Page 6 of 6)



- Structure Triage Point
- Defensible - Stand Alone
- Defensible - Prep and Hold
- Non-Defensible - Prep and Leave
- Non-Defensible - Rescue Drive-By
- Unknown
- Aerial Hazard
- Check Point
- Helispot
- Division Break
- Drop Point
- Staging Area
- Value at Risk
- Landmark
- Water Development or Draft Site
- Mobile Weather Unit
- Safety Zone
- Hazard
- Water Source
- Restricted Water Source
- Pump
- Water Tank
- Completed Dozer Line
- Completed Hand Line
- Completed Mixed Construction Line
- Completed Road as Line
- Planned Dozer Line
- Planned Road as Line
- Access or Improved Road
- Aerial Hazard
- Fire Edge
- Contained Line
- Completed
- Planned
- Wildfire Daily Fire Perimeter
- USFS Wilderness
- Forest Service
- Private Timberland



1:24,000



Last Updated  
9/22/2021  
22:08