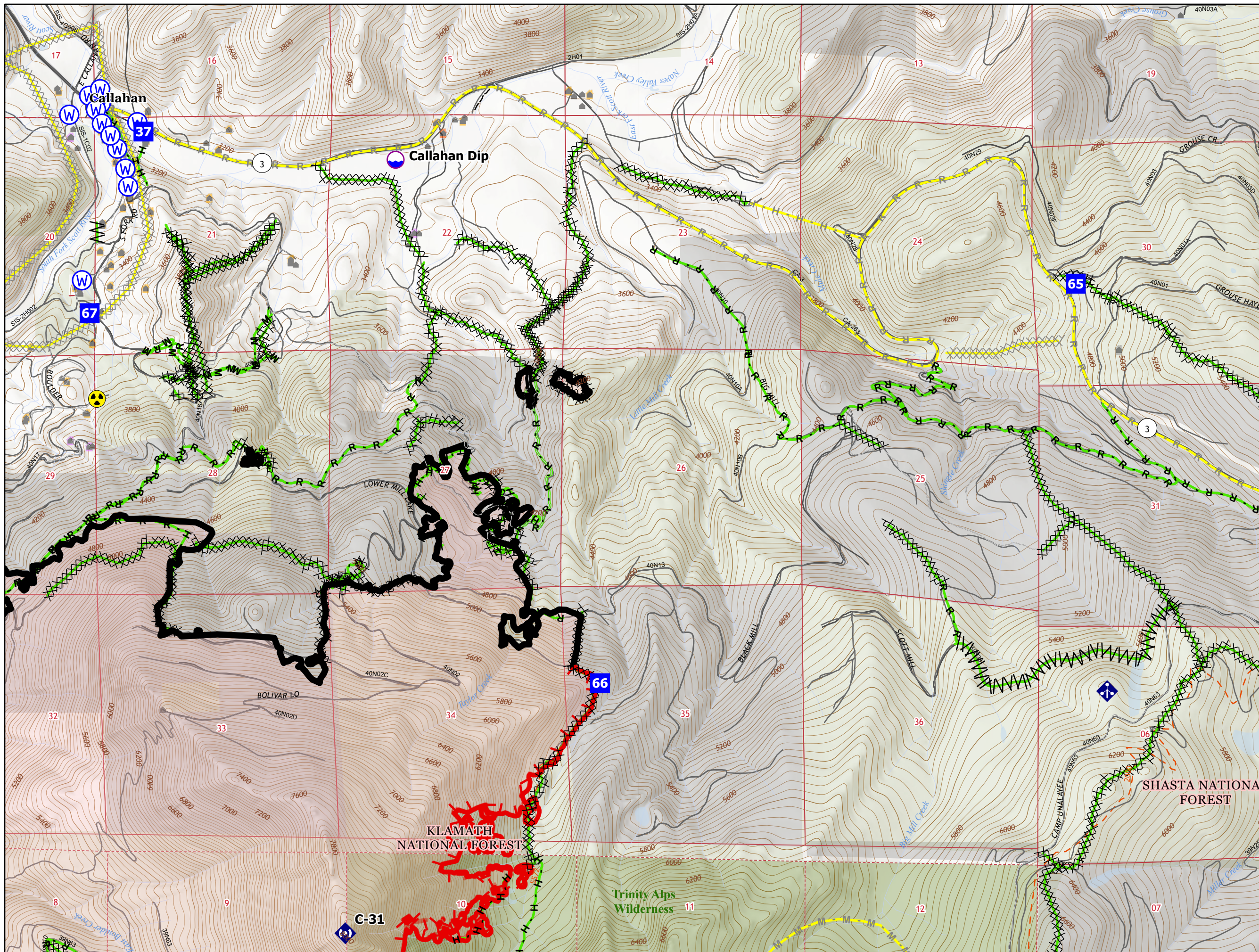


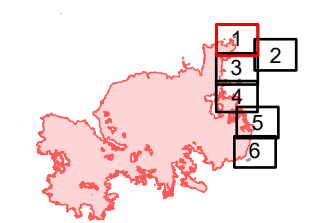
FIELD OPERATIONS

Div M - Callahan

(Page 1 of 6)



- Structure Triage Point
- Defensible - Prep and Hold
- Non-Defensible - Prep and Leave
- Non-Defensible - Rescue Drive-By
- Unknown
- Dip Site
- Drop Point
- Hazard
- Mobile Weather Unit
- Repeater
- Water Source
- Completed Dozer Line
- Completed Fuel Break
- Completed Hand Line
- Completed Mixed Construction Line
- Completed Road as Line
- Planned Dozer Line
- Planned Hand Line
- Planned Mixed Construction Line
- Planned Road as Line
- Access or Improved Road
- Fire Edge
- Contained Line
- Completed
- Planned
- Wildfire Daily Fire Perimeter
- USFS Wilderness
- Forest Service
- Private Timberland



1:24,000

Miles

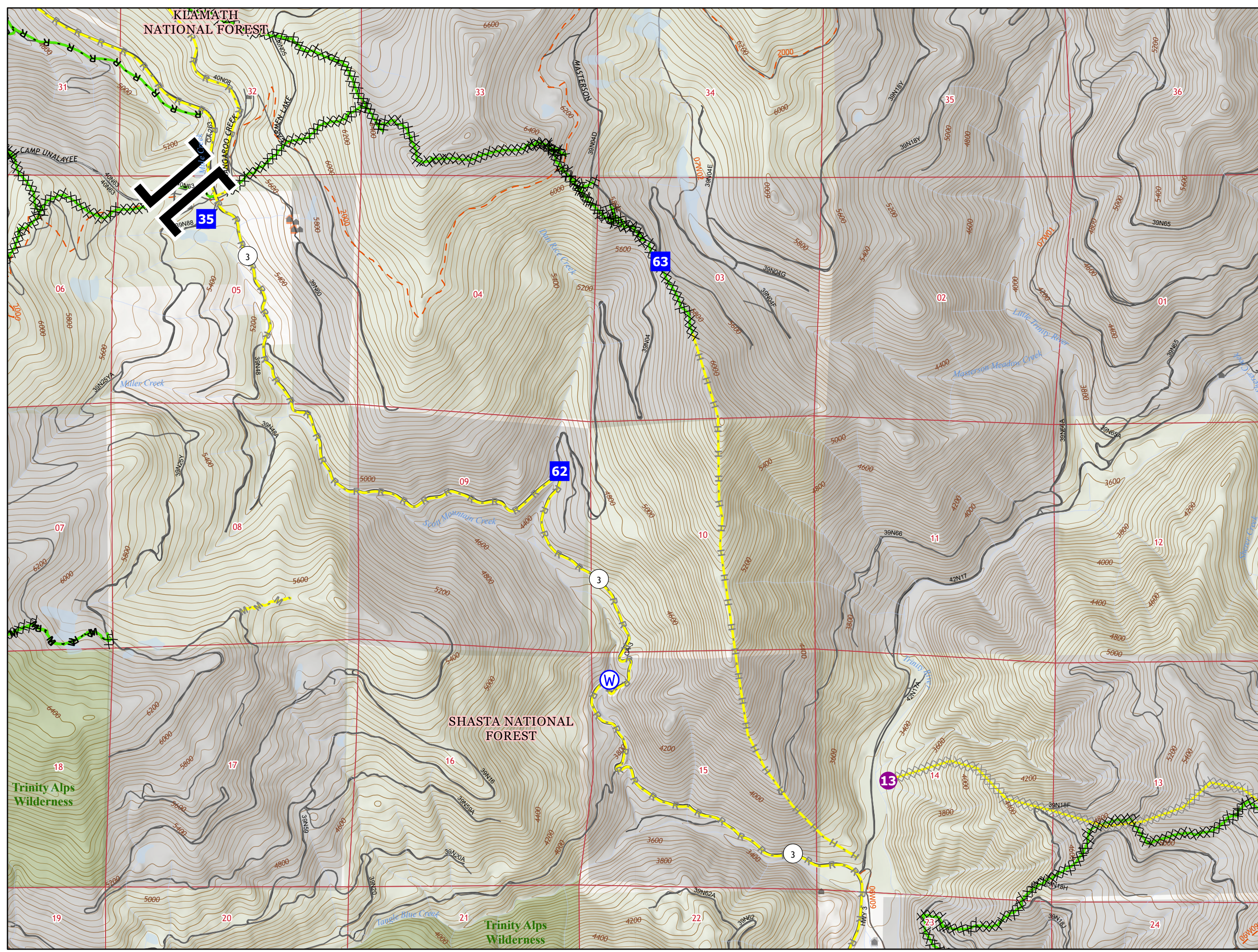
N

Last Updated
9/25/2021
22:29

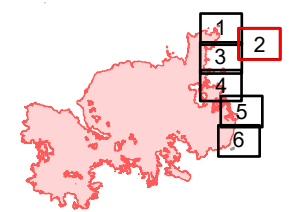
FIELD OPERATIONS

Div N - Scott Mountain Creek

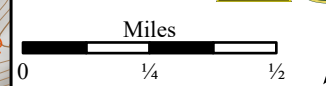
(Page 2 of 6)



- Structure Triage Point
- Non-Defensible - Rescue Drive-By
- Unknown
- Branch Break
- Drop Point
- Helispot
- Water Source
- Completed Dozer Line
- Completed Fuel Break
- Completed Mixed Construction Line
- Completed Road as Line
- Planned Dozer Line
- Planned Hand Line
- Planned Mixed Construction Line
- Planned Road as Line
- Access or Improved Road
- Completed
- Planned
- USFS Wilderness
- Forest Service
- Private Timberland



1:24,000

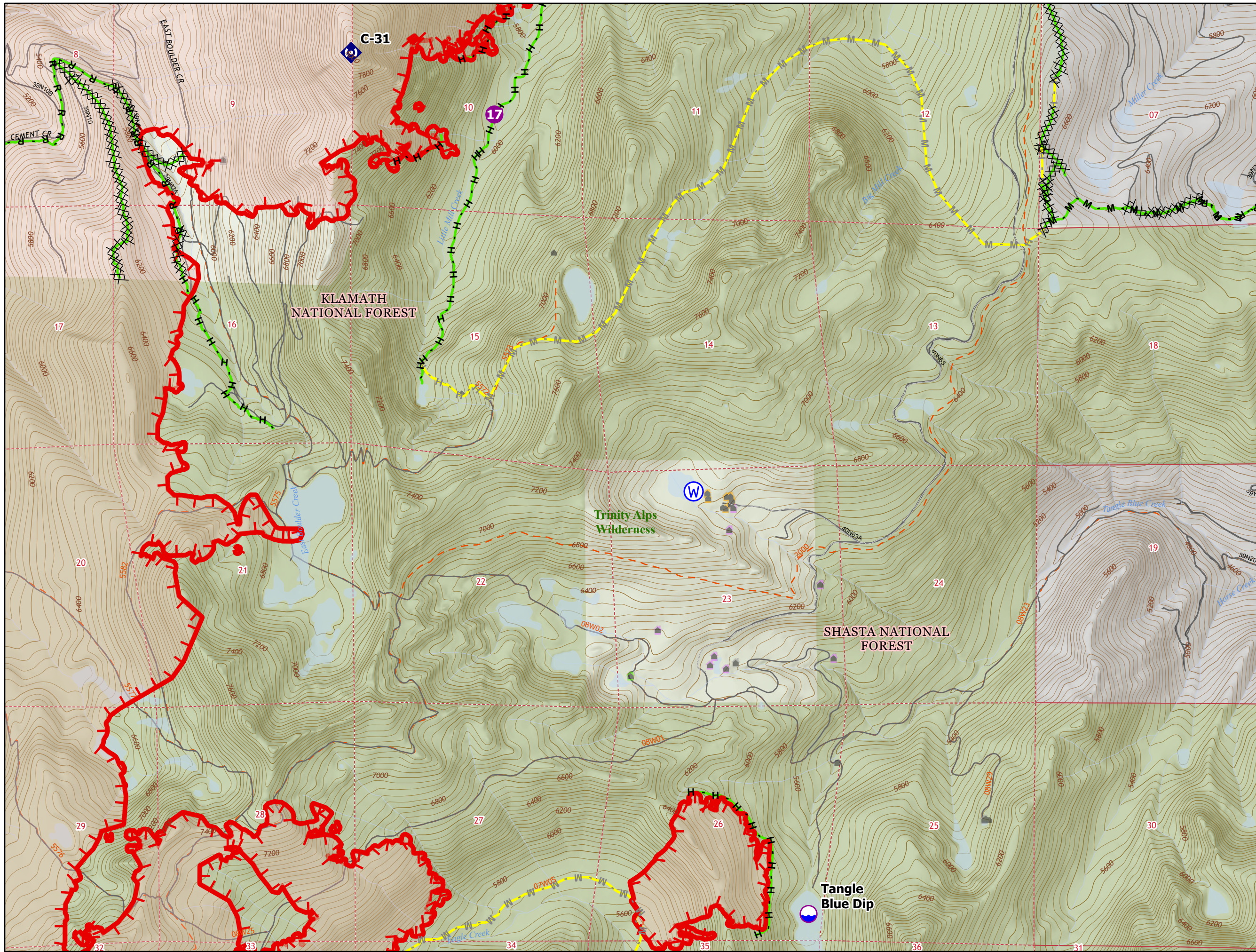


Last Updated
9/25/2021
22:29

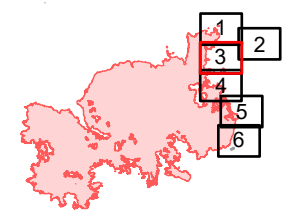
FIELD OPERATIONS

Div N - Mosquito Lake

(Page 3 of 6)



- Structure Triage Point
- Defensible - Stand Alone
- Defensible - Prep and Hold
- Non-Defensible - Prep and Leave
- Unknown
- Dip Site
- Helispot
- Repeater
- Sling Site
- Water Source
- Completed Dozer Line
- Completed Hand Line
- Completed Mixed Construction Line
- Completed Road as Line
- Planned Hand Line
- Planned Mixed Construction Line
- Access or Improved Road
- Fire Edge
- Completed
- Planned
- Wildfire Daily Fire Perimeter
- USFS Wilderness
- Forest Service
- Private Timberland



1:24,000

Miles

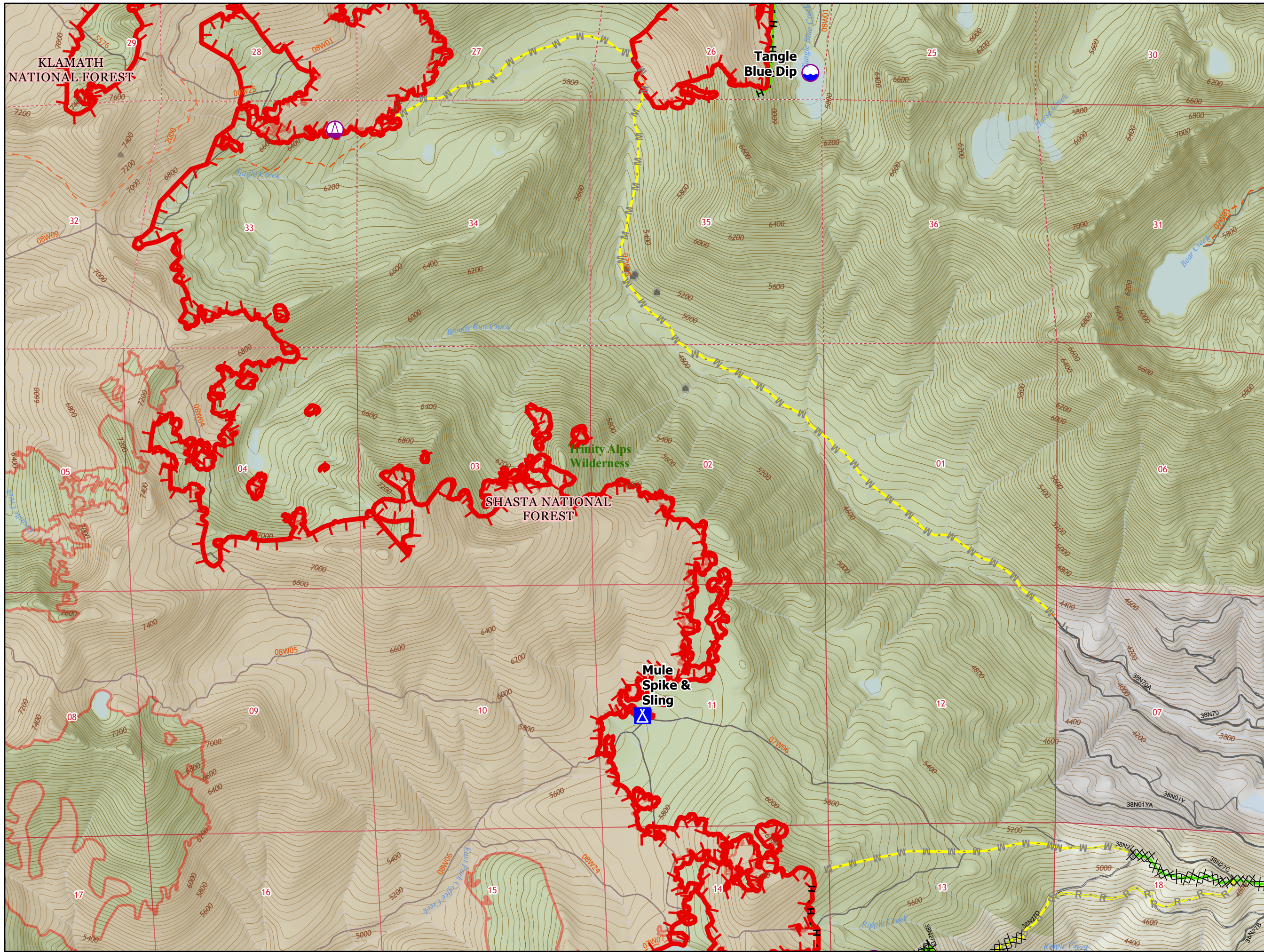
N

Last Updated
9/25/2021
22:29

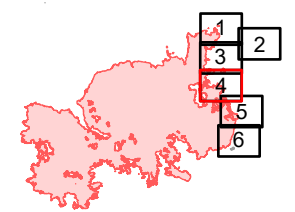
FIELD OPERATIONS

Div N - Horse Creek

(Page 4 of 6)



- Structure Triage Point
- Unknown
- Dip Site
- Camp
- Sling Site
- Completed Dozer Line
- Completed Hand Line
- Completed Road as Line
- Planned Mixed Construction Line
- Planned Road as Line
- Access or Improved Road
- Fire Edge
- Completed
- Planned
- Wildfire Daily Fire Perimeter
- USFS Wilderness
- Forest Service
- Private Timberland



1:24,000

Miles

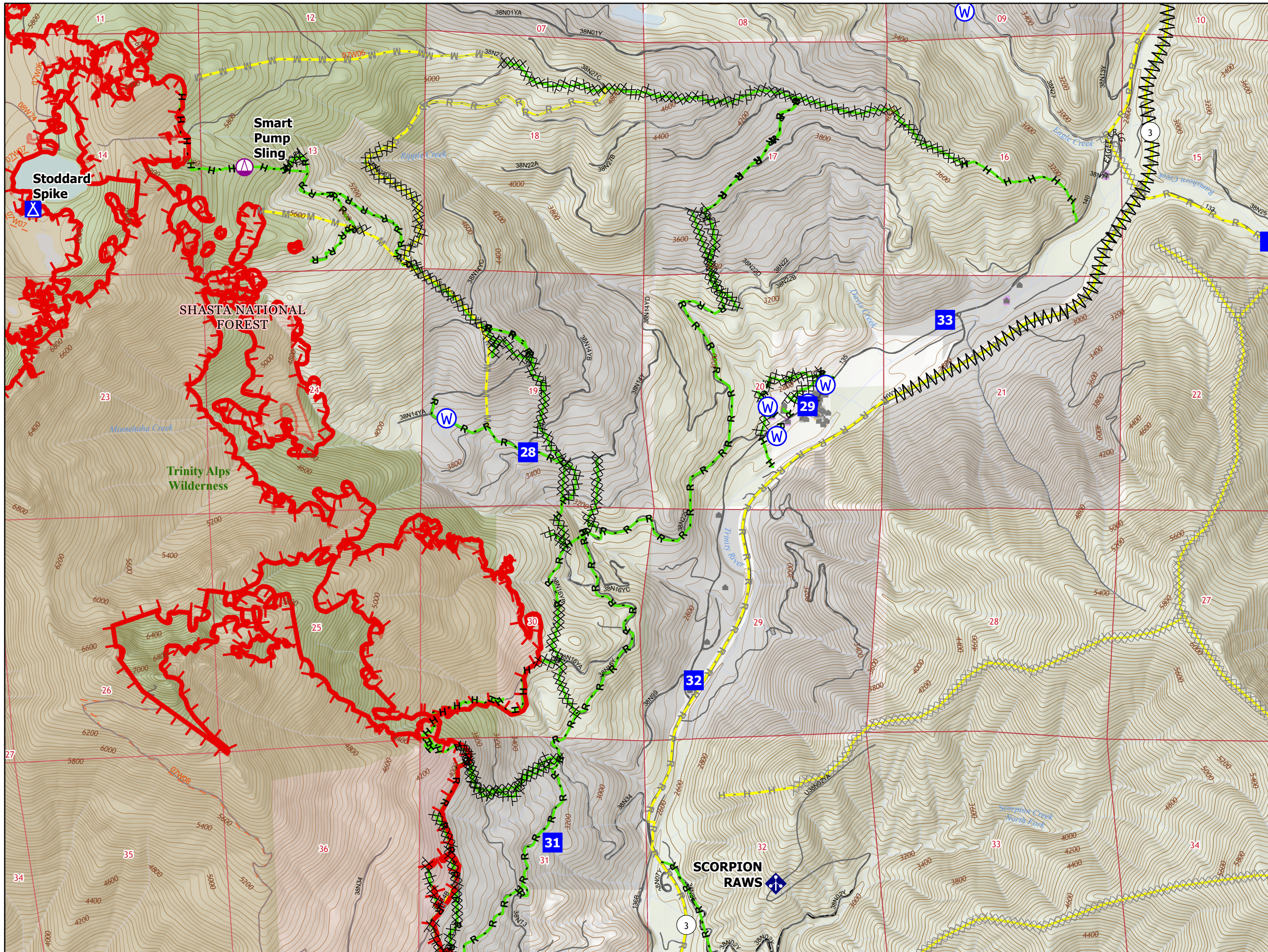
0 1/4 1/2















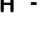
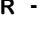











Last Updated
9/25/2021
22:29

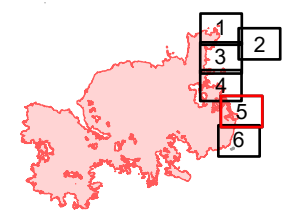
FIELD OPERATIONS

Div N - Eagle Creek

(Page 5 of 6)





-  Structure Triage Point
-  Defensible - Stand Alone
-  Defensible - Prep and Hold
-  Non-Defensible - Prep and Leave
-  Unknown
-  Camp
-  Drop Point
-  Mobile Weather Unit
-  Restricted Water Source
-  Sling Site
-  Water Source
-  Completed Dozer Line
-  Completed Fuel Break
-  Completed Hand Line
-  Completed Road as Line
-  Planned Dozer Line
-  Planned Hand Line
-  Planned Mixed Construction Line
-  Planned Road as Line
-  Access or Improved Road
-  Fire Edge
-  Completed
-  Planned
-  Wildfire Daily Fire Perimeter
-  USFS Wilderness
-  Forest Service
-  Private Timberland



1:24,000

Miles 0 1/4 1/2

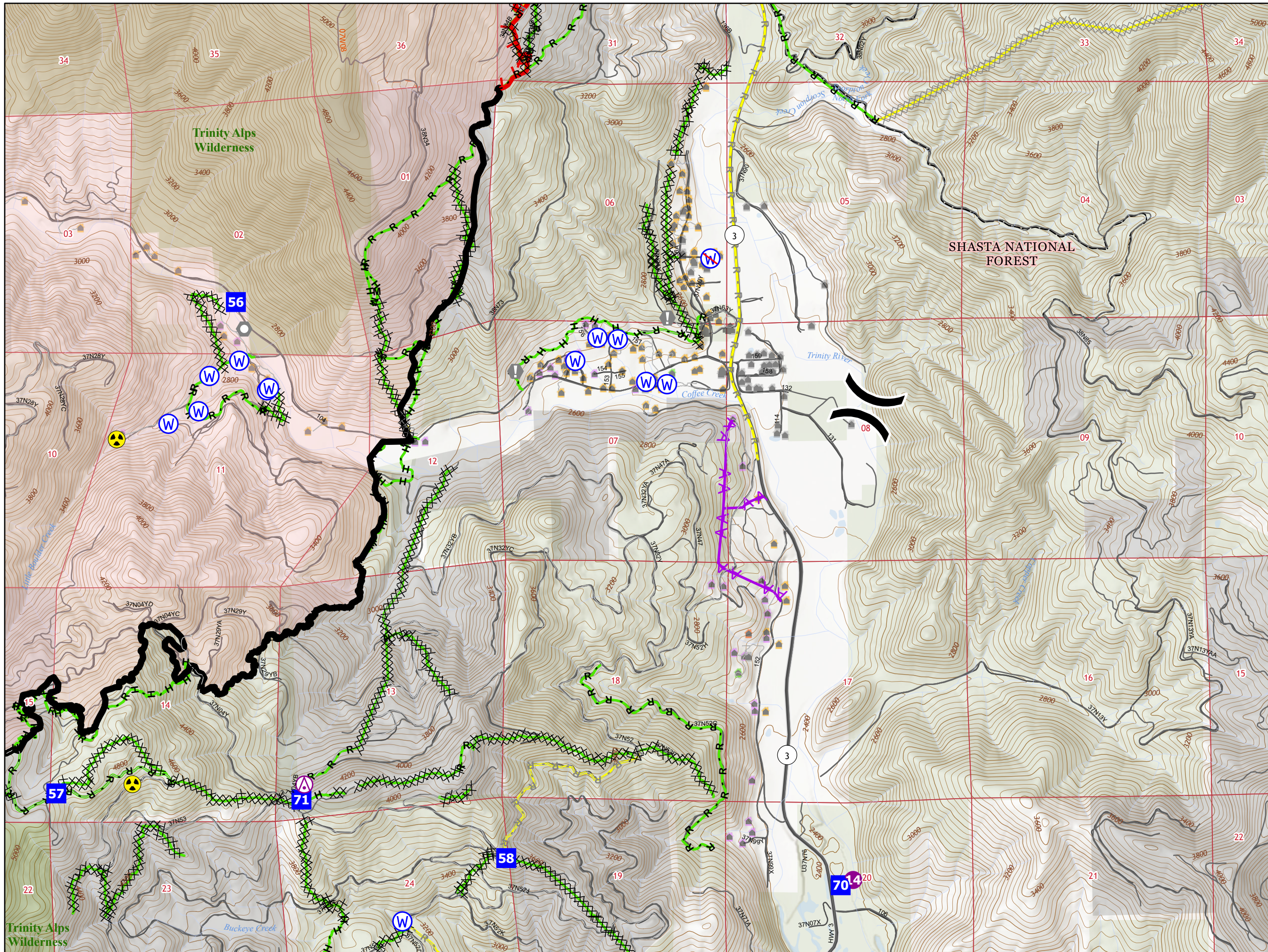


Last Updated 9/25/2021 22:29

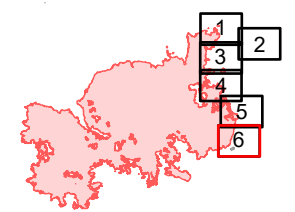
FIELD OPERATIONS

Div N/Q - Coffee Creek

(Page 6 of 6)



- Structure Triage Point
- Defensible - Stand Alone
- Defensible - Prep and Hold
- Non-Defensible - Prep and Leave
- Non-Defensible - Rescue Drive-By
- Unknown
- Aerial Hazard
- Division Break
- Drop Point
- Hazard
- Helispot
- Landmark
- Mobile Weather Unit
- Restricted Water Source
- Value at Risk
- Water Source
- Completed Dozer Line
- Completed Hand Line
- Completed Mixed Construction Line
- Completed Road as Line
- Planned Dozer Line
- Planned Road as Line
- Access or Improved Road
- Aerial Hazard
- Fire Edge
- Contained Line
- Completed
- Planned
- Wildfire Daily Fire Perimeter
- USFS Wilderness
- Forest Service
- Private Timberland



1:24,000

Miles

N

Last Updated
9/25/2021
22:29