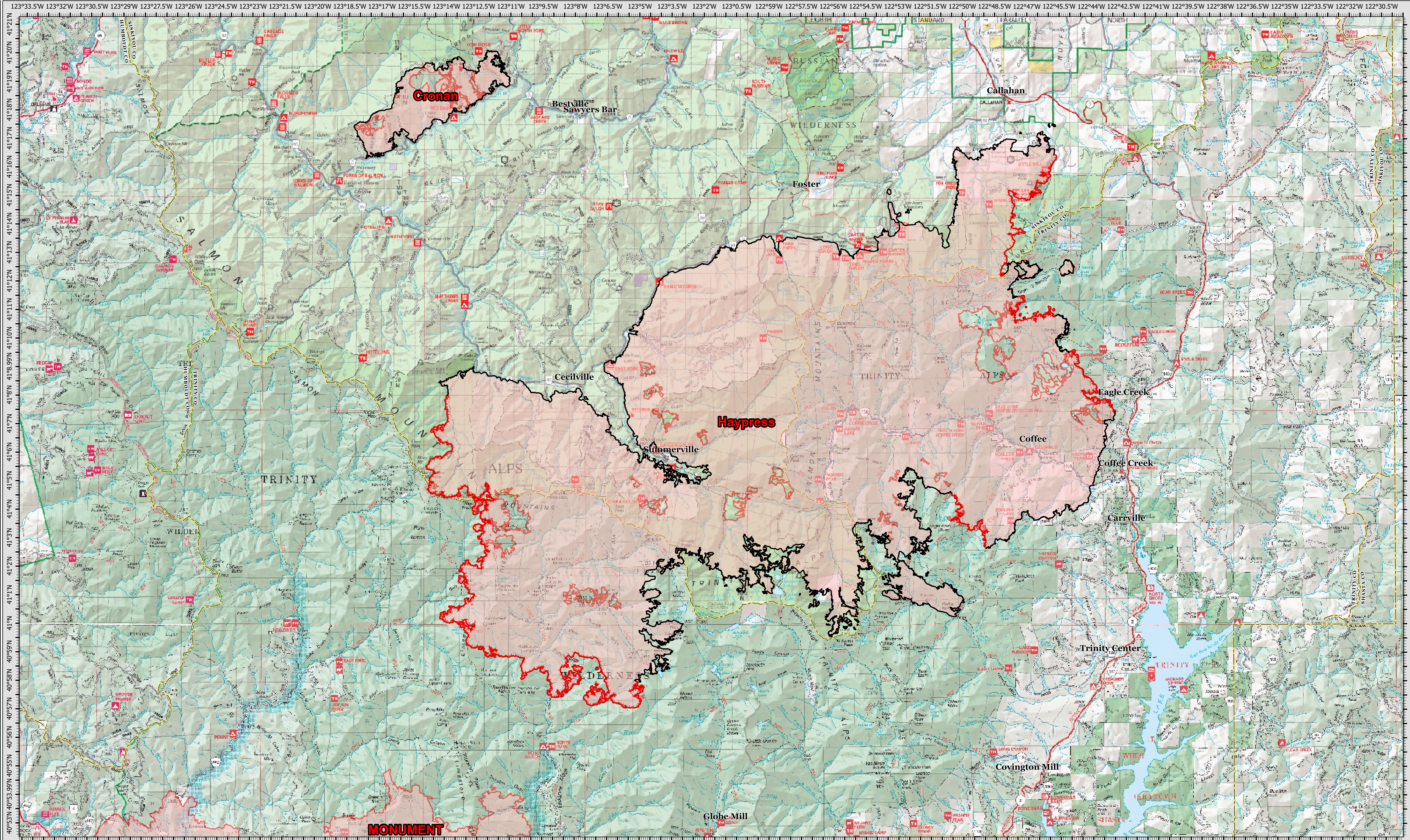


10/02/2021 07:00



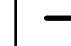

PUBLIC INFORMATION

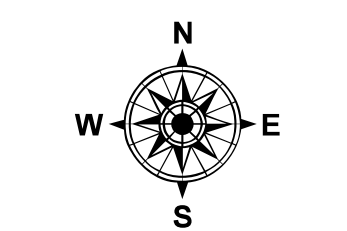


123°33.5'W 123°32'W 123°30.5'W 123°29'W 123°27.5'W 123°26'W 123°24.5'W 123°23'W 123°21.5'W 123°20'W 123°18.5'W 123°17'W 123°15.5'W 123°14'W 123°12.5'W 123°11'W 123°9.5'W 123°8'W 123°6.5'W 123°5'W 123°3.5'W 123°2'W 123°0.5'W 122°59'W 122°57.5'W 122°56'W 122°54.5'W 122°53'W 122°51.5'W 122°50'W 122°48.5'W 122°47'W 122°45.5'W 122°44'W 122°42.5'W 122°41'W 122°39.5'W 122°38'W 122°36.5'W 122°35'W 122°33.5'W 122°32'W 122°30.5'W

### River Complex

CA-KNF-006385  
10/02/2021 07:00

-  Wildfire Daily Fire Perimeter
-  Fire Edge
-  Contained Line
-  County Boundary



0 0.75 1.5 3 Miles  
Datum: North American 1983