

Branch X

Div K

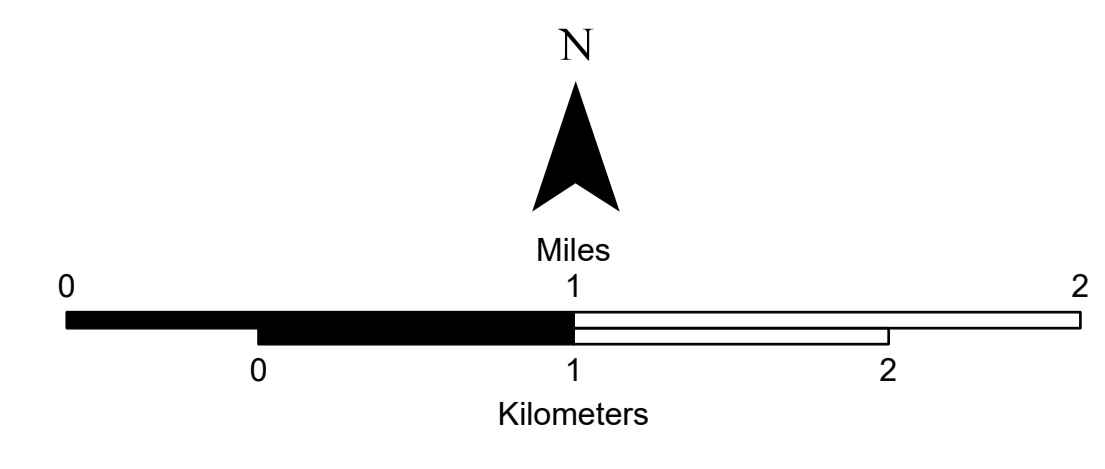


OPS: Div K  
10/05/2021 07:00

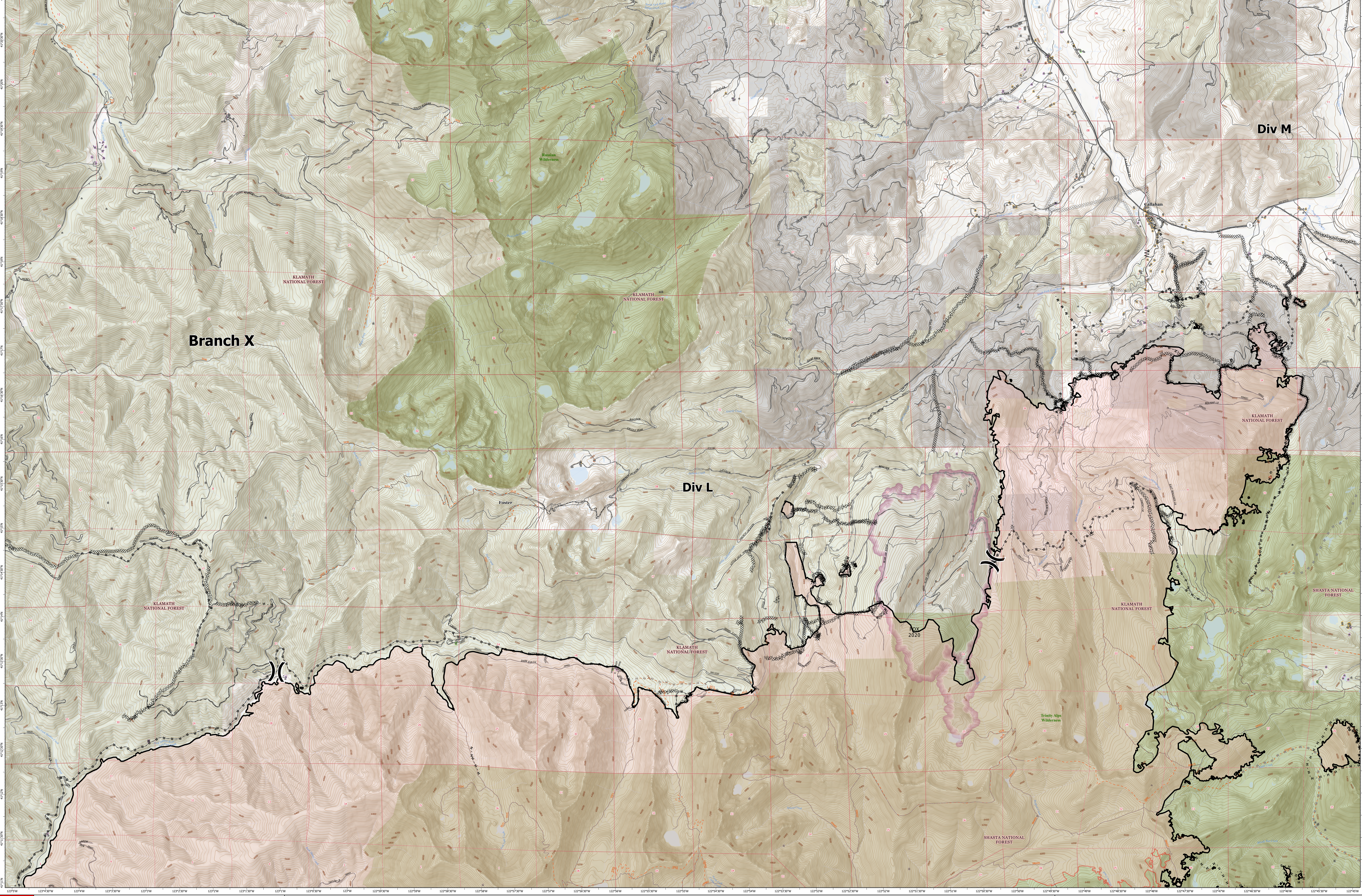
# OPERATIONS: Div K

River Complex  
CA-KNF-006385  
10/05/2021 07:00

- X - Division Break
- ⊗ - No Dip
- ⊗ - Completed Dozer Line
- H - Completed Hand Line
- R - Completed Road as Line
- H - Planned Hand Line
- M - Planned Mixed Construction Line
- - Access or Improved Road
- - Contained Line
- - Wildfire Daily Fire Perimeter
- - Fire History
- - USFS Wilderness
- - Forest Service
- - Private Timberland



Scale: 1:24,000  
 Spatial Reference:  
 Name: NAD 1983 UTM Zone 10N  
 Datum: North American 1983  
 Projection: Transverse Mercator

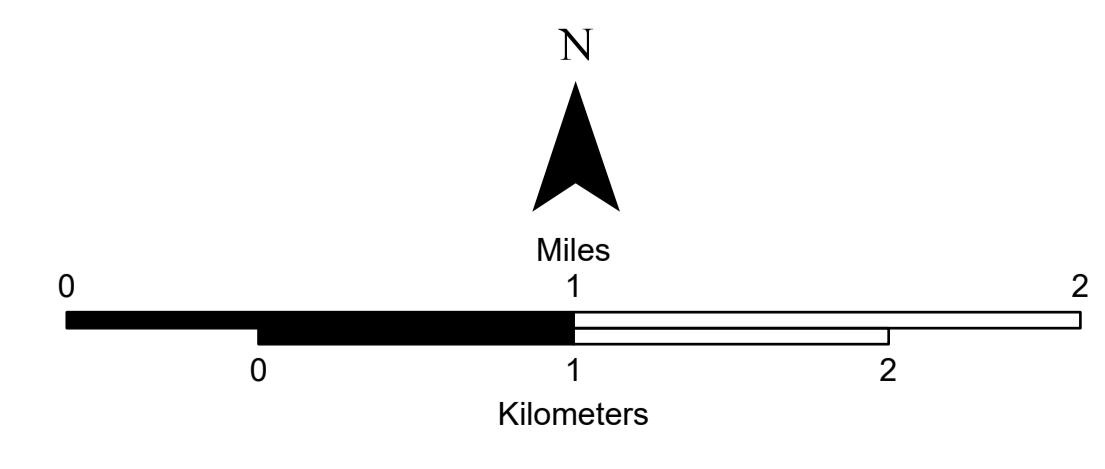


OPS: Div L  
10/05/2021 07:00

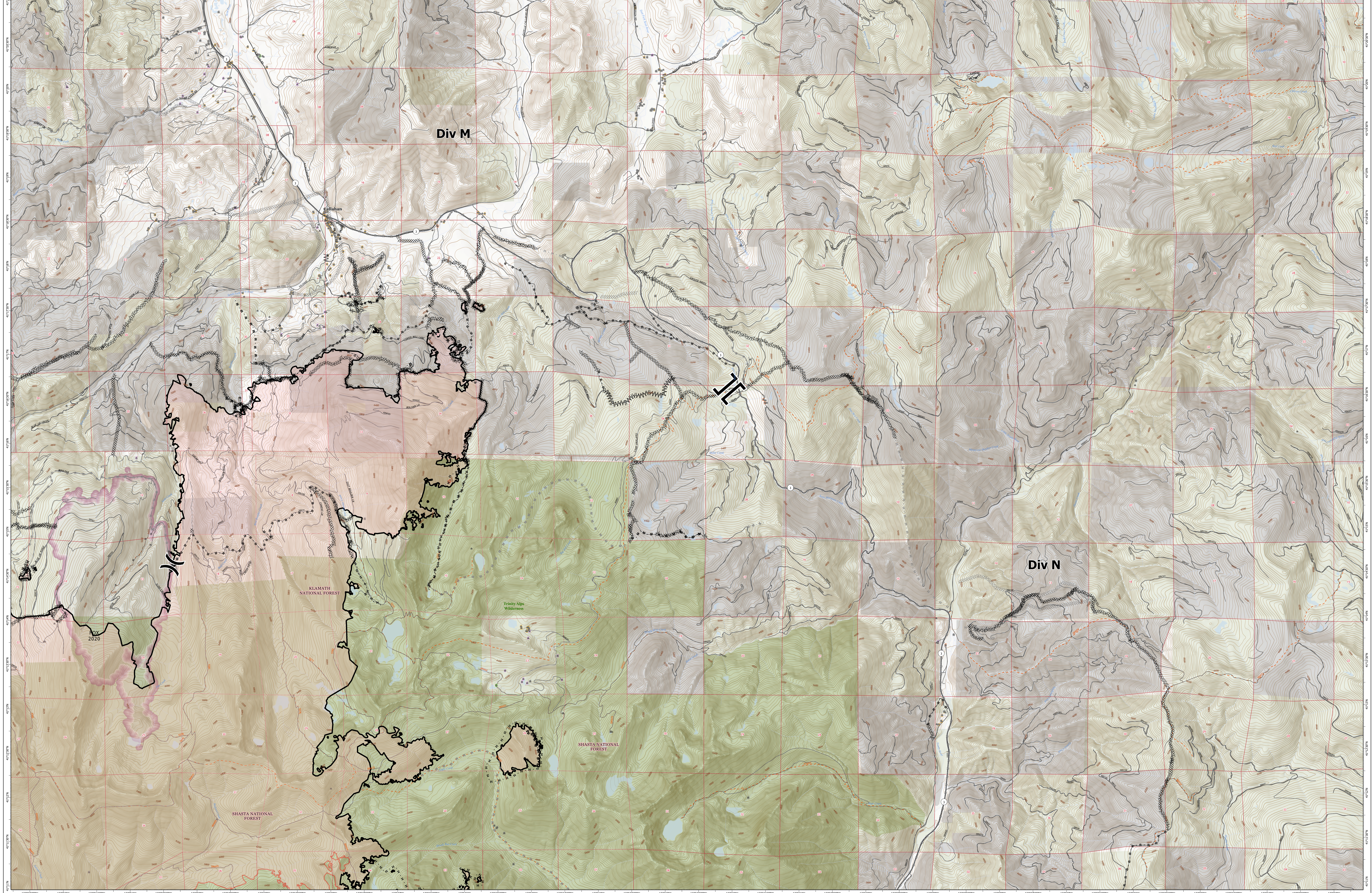
# OPERATIONS: Div L

River Complex  
CA-KNF-006385  
10/05/2021 07:00

- X - Division Break
- - Completed Mixed Construction Line
- R - Completed Road as Line
- ∞∞ - Completed Dozer Line
- W - Completed Fuel Break
- H - Completed Hand Line
- ∞∞ - Planned Dozer Line
- H - Planned Hand Line
- M - Planned Mixed Construction Line
- ∞∞ - Planned Road as Line
- - Access or Improved Road
- - Fire Edge
- - Contained Line
- - Wildfire Daily Fire Perimeter
- Fire History
- USFS Wilderness
- Forest Service
- Private Timberland



Scale: 1:24,000  
Spatial Reference: NAD 1983 UTM Zone 10N  
Datum: North American 1983  
Projection: Transverse Mercator  
© 2021 USGS Updated: 10/04/2021 22:28

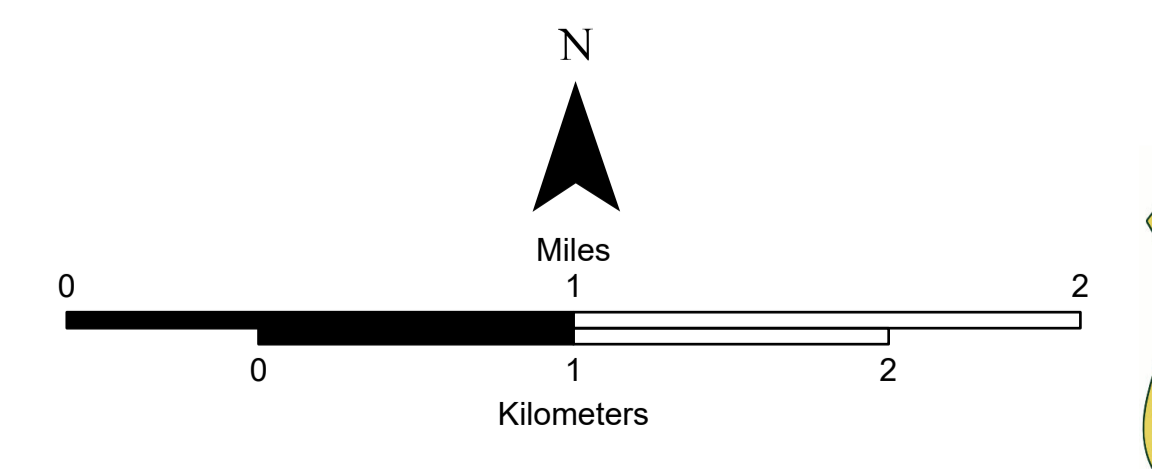


**OPS: Div M**  
**10/05/2021 07:00**

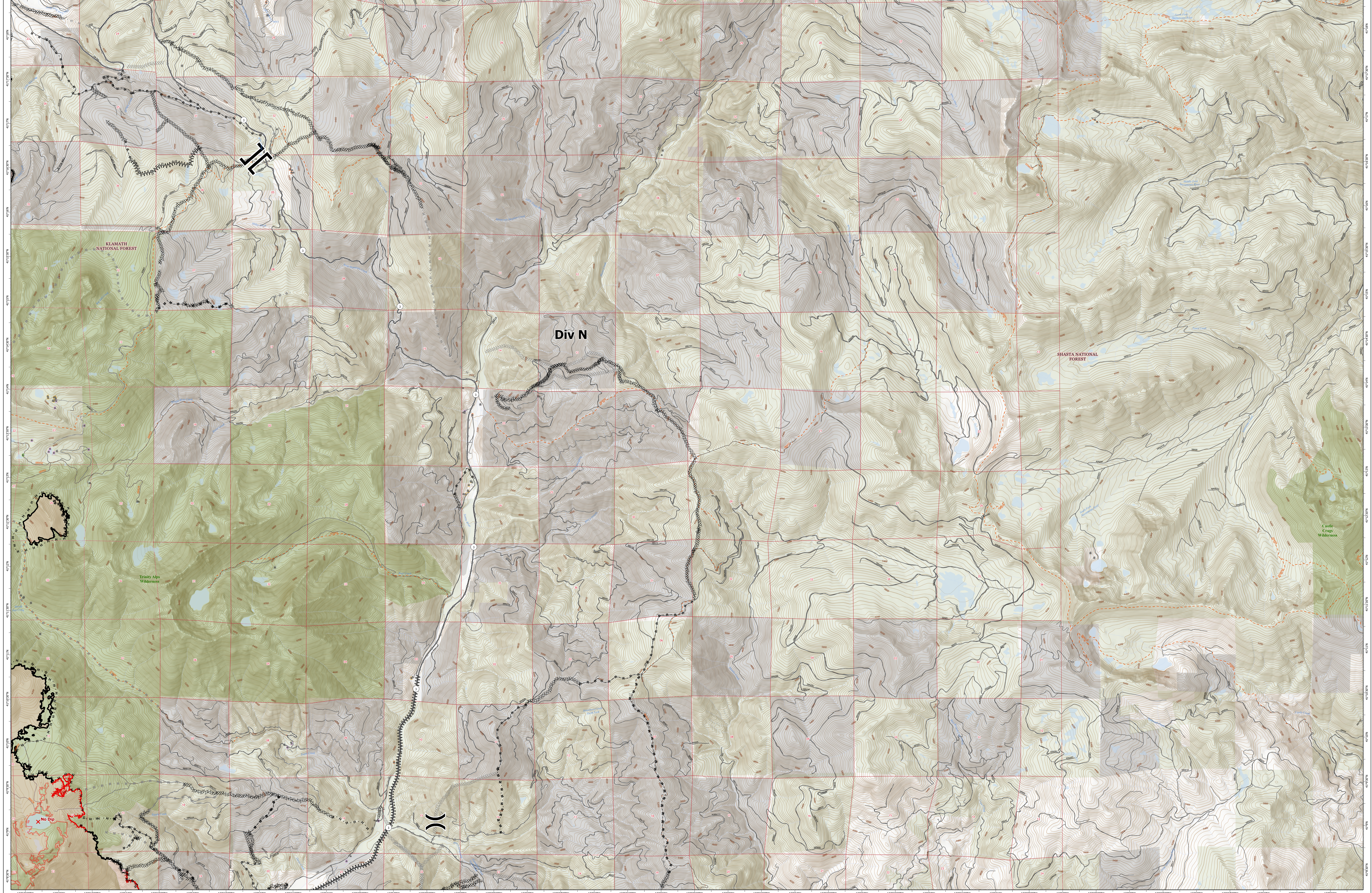
# OPERATIONS: Div M

River Complex  
 CA-KNF-006385  
 10/05/2021 07:00

- |   |  |   |  |
|---|--|---|--|
| <ul style="list-style-type: none"> <li>   Branch Break</li> <li>) Division Break</li> <li>X No Dip</li> <li>∞∞ Completed Dozer Line</li> <li>∞∞ Completed Fuel Break</li> </ul> | <ul style="list-style-type: none"> <li>• Completed Hand Line</li> <li>• Completed Mixed Construction Line</li> <li>• Completed Road as Line</li> <li>∞∞ Planned Dozer Line</li> <li>H Planned Hand Line</li> </ul> | <ul style="list-style-type: none"> <li>• Planned Mixed Construction Line</li> <li>• Planned Road as Line</li> <li>• Access or Improved Road</li> <li>• Fire Edge</li> <li>• Contained Line</li> </ul> | <ul style="list-style-type: none"> <li>• Wildfire Daily Fire Perimeter</li> <li>• Fire History</li> <li>• USFS Wilderness</li> <li>• Forest Service</li> <li>• Private Timberland</li> </ul> |
|---|--|---|--|



Scale: 1:24,000  
 Spatial Reference:  
 Name: NAD 1983 UTM Zone 10N  
 Datum: North American 1983  
 Projection: Transverse Mercator

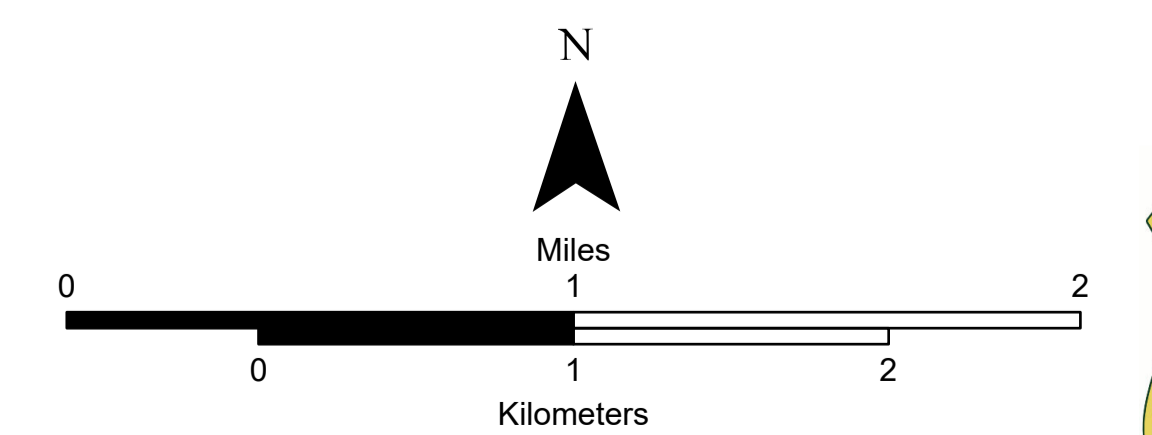


**OPS: Div N**  
**10/05/2021 07:00**

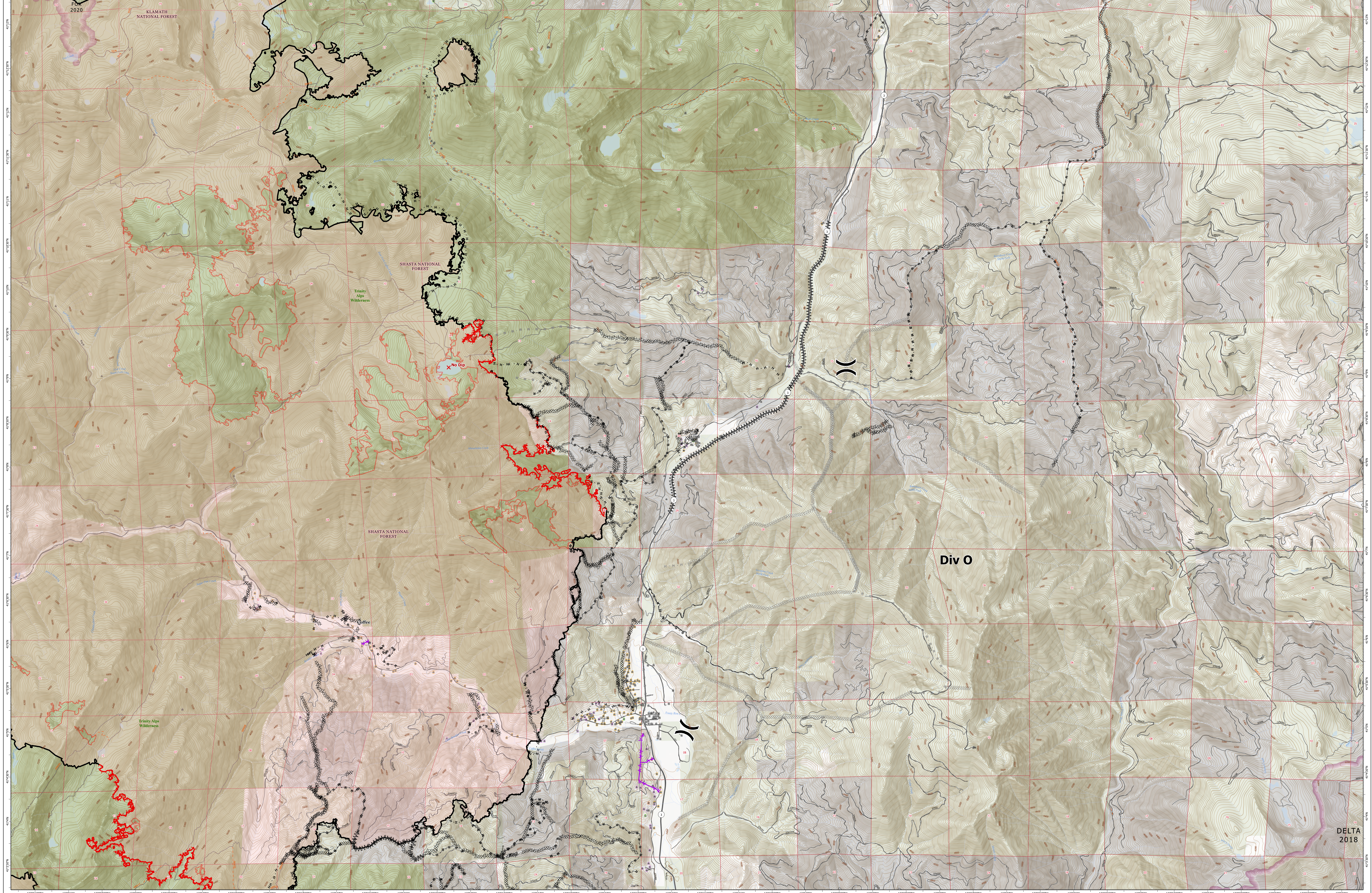
# OPERATIONS: Div N

River Complex  
 CA-KNF-006385  
 10/05/2021 07:00

- |                         |                                     |                                   |                                 |
|-------------------------|-------------------------------------|-----------------------------------|---------------------------------|
| ⌌ Branch Break          | — Completed Hand Line               | — Planned Mixed Construction Line | ▭ Wildfire Daily Fire Perimeter |
| ⌋ Division Break        | — Completed Mixed Construction Line | — Planned Road as Line            | ▭ Fire History                  |
| ✗ No Dip                | — Completed Road as Line            | — Access or Improved Road         | ▭ USFS Wilderness               |
| ⋯ Completed Dozer Line  | — Planned Dozer Line                | — Fire Edge                       | ▭ Forest Service                |
| ⌌⌌ Completed Fuel Break | — Planned Hand Line                 | — Contained Line                  | ▭ Private Timberland            |



Scale: 1:24,000  
 Spatial Reference:  
 Name: NAD 1983 UTM Zone 10N  
 Datum: North American 1983  
 Projection: Transverse Mercator

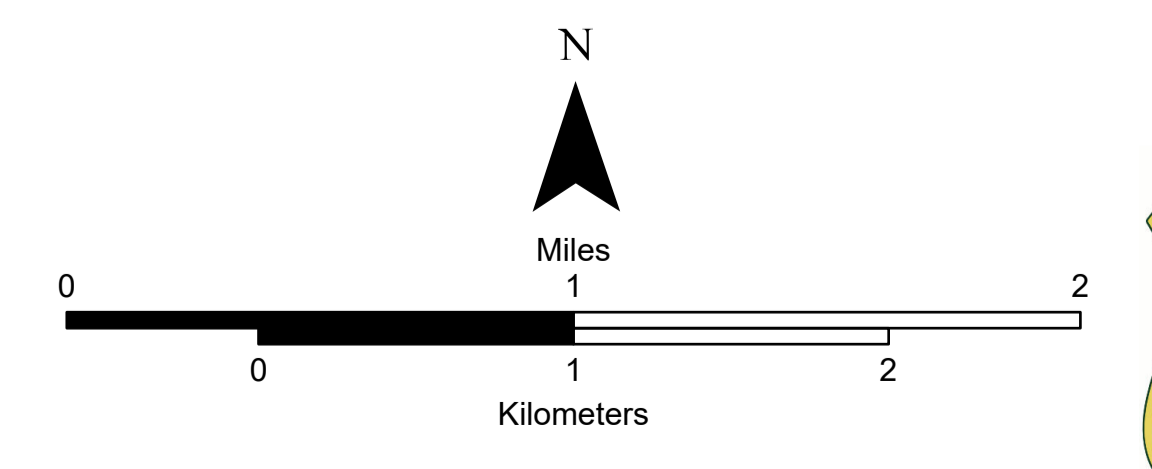


OPS: Div O  
10/05/2021 07:00

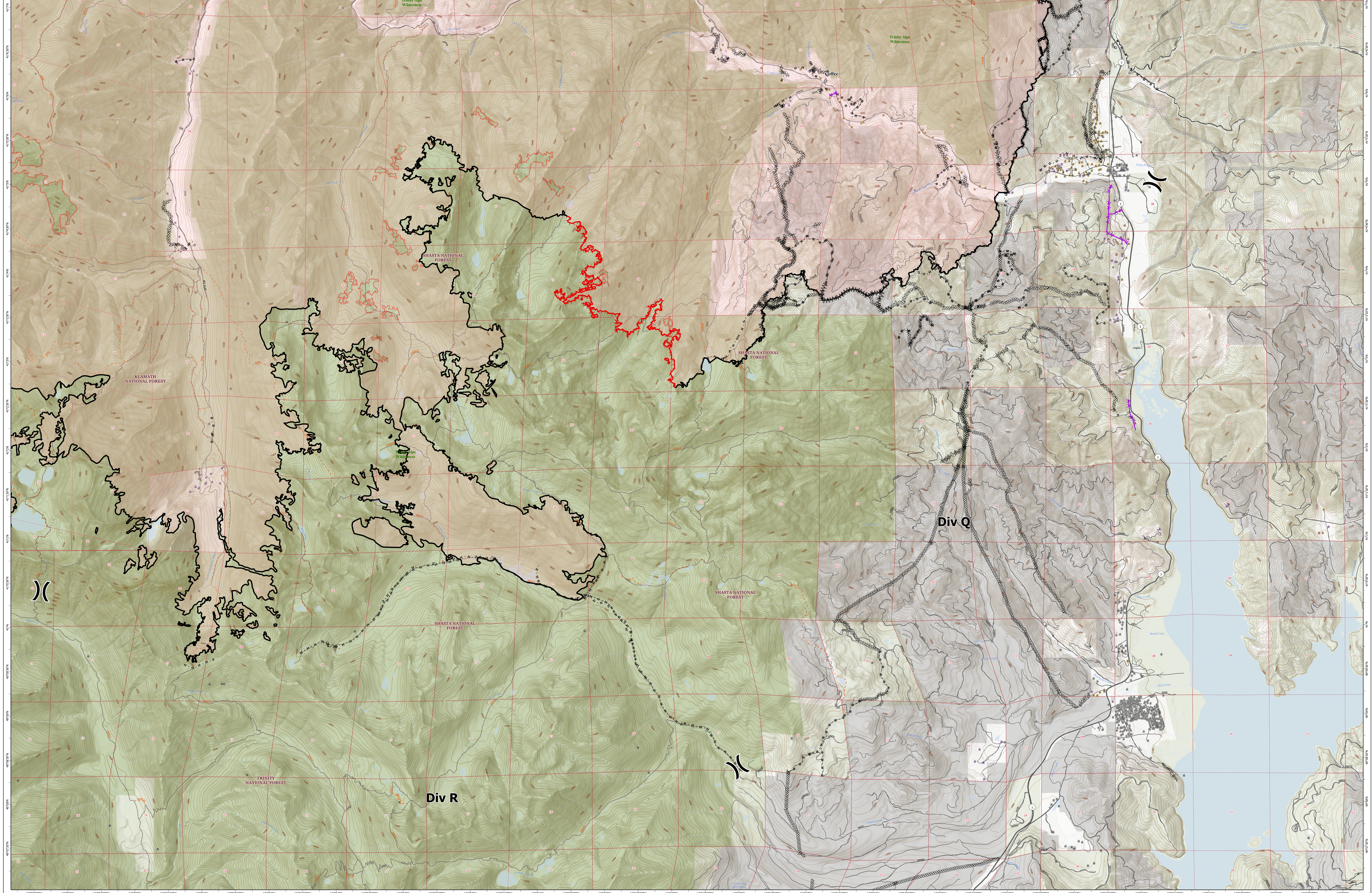
# OPERATIONS: Div O

River Complex  
CA-KNF-006385  
10/05/2021 07:00

- |   |                      |   |                                   |   |                         |   |                               |
|---|----------------------|---|-----------------------------------|---|-------------------------|---|-------------------------------|
| X | Division Break       | M | Completed Mixed Construction Line | H | Planned Road as Line    | ▭ | Wildfire Daily Fire Perimeter |
| X | No Dip               | R | Completed Road as Line            | A | Access or Improved Road | ▭ | Fire History                  |
| ⋯ | Completed Dozer Line | ⋯ | Planned Dozer Line                | ⋯ | Aerial Hazard           | ▭ | USFS Wilderness               |
| W | Completed Fuel Break | H | Planned Hand Line                 | ▭ | Fire Edge               | ▭ | Forest Service                |
| H | Completed Hand Line  | M | Planned Mixed Construction Line   | ▭ | Contained Line          | ▭ | Private Timberland            |



Scale: 1:24,000  
Spatial Reference: NAD 1983 UTM Zone 10N  
Datum: North American 1983  
Projection: Transverse Mercator

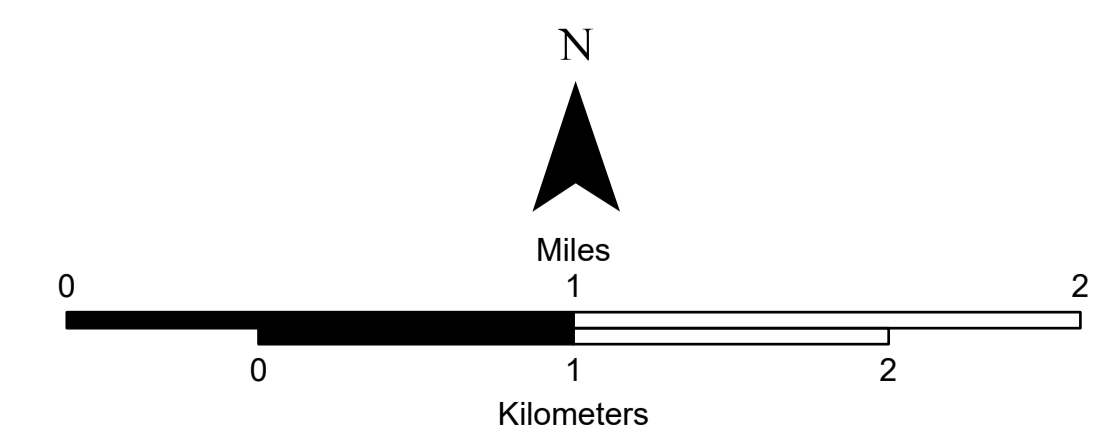


**OPS: Div Q + R**  
**10/05/2021 07:00**

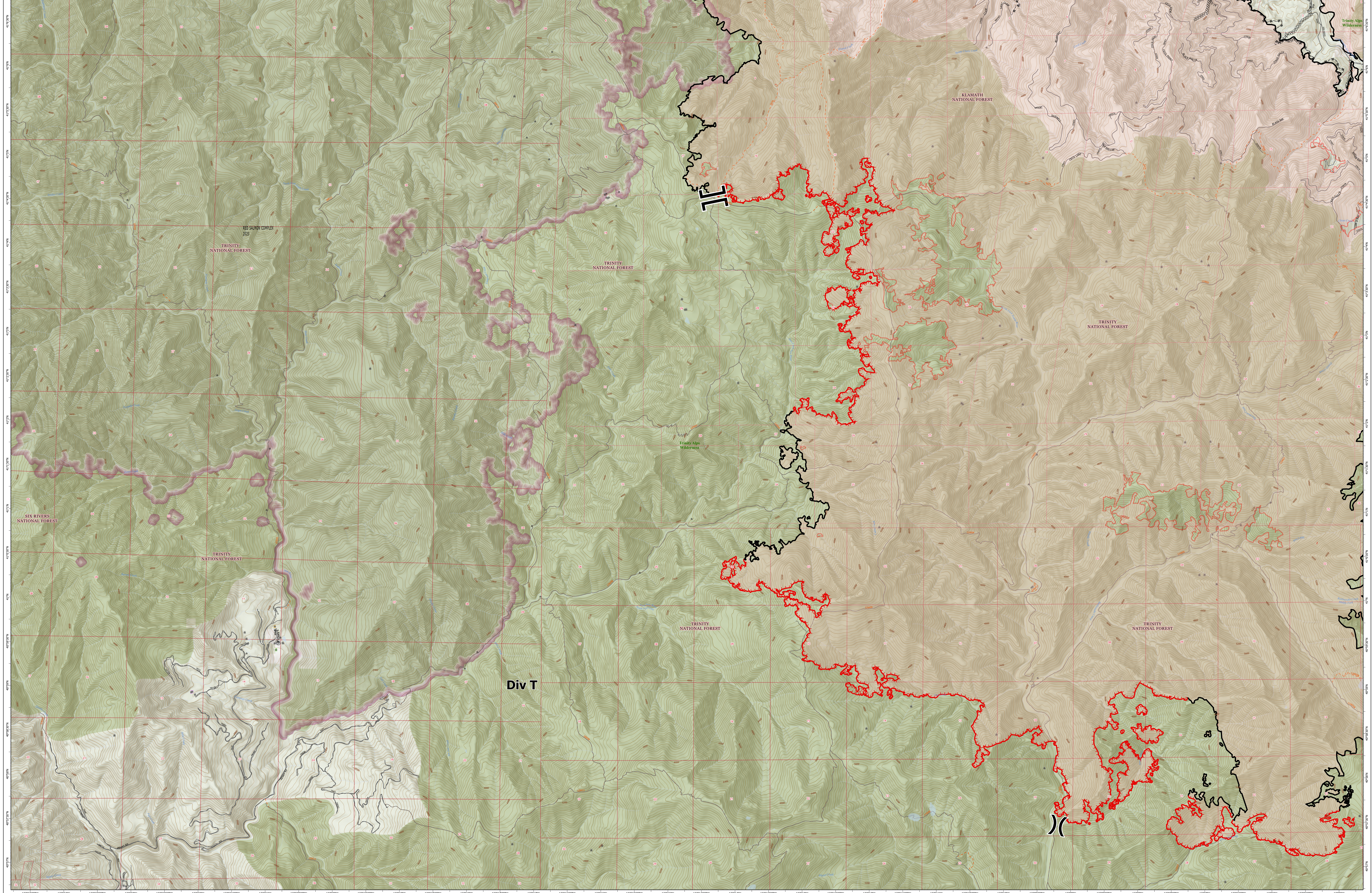
# OPERATIONS: Div Q + R

River Complex  
 CA-KNF-006385  
 10/05/2021 07:00

- |   |                      |   |                                   |   |                               |   |                    |
|---|----------------------|---|-----------------------------------|---|-------------------------------|---|--------------------|
| ⌋ | Division Break       | • | Completed Mixed Construction Line | — | Access or Improved Road       | ■ | Fire History       |
| ✗ | No Dip               | R | Completed Road as Line            | — | Aerial Hazard                 | ■ | USFS Wilderness    |
| — | Completed Dozer Line | — | Planned Dozer Line                | — | Fire Edge                     | ■ | Forest Service     |
| — | Completed Fuel Break | H | Planned Hand Line                 | — | Contained Line                | ■ | Private Timberland |
| H | Completed Hand Line  | R | Planned Road as Line              | — | Wildfire Daily Fire Perimeter |   |                    |



Scale: 1:24,000  
 Spatial Reference:  
 Name: NAD 1983 UTM Zone 10N  
 Datum: North American 1983  
 Projection: Transverse Mercator

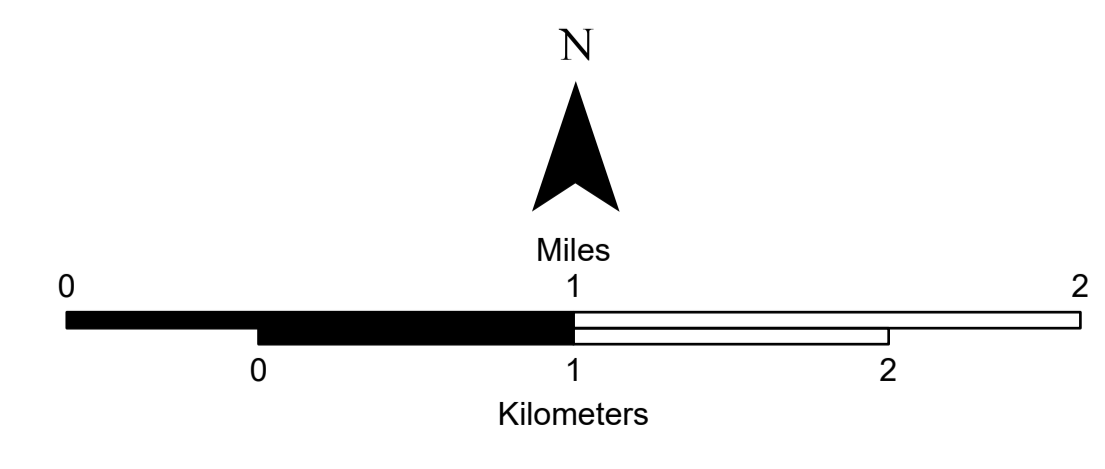


OPS: Div T  
10/05/2021 07:00

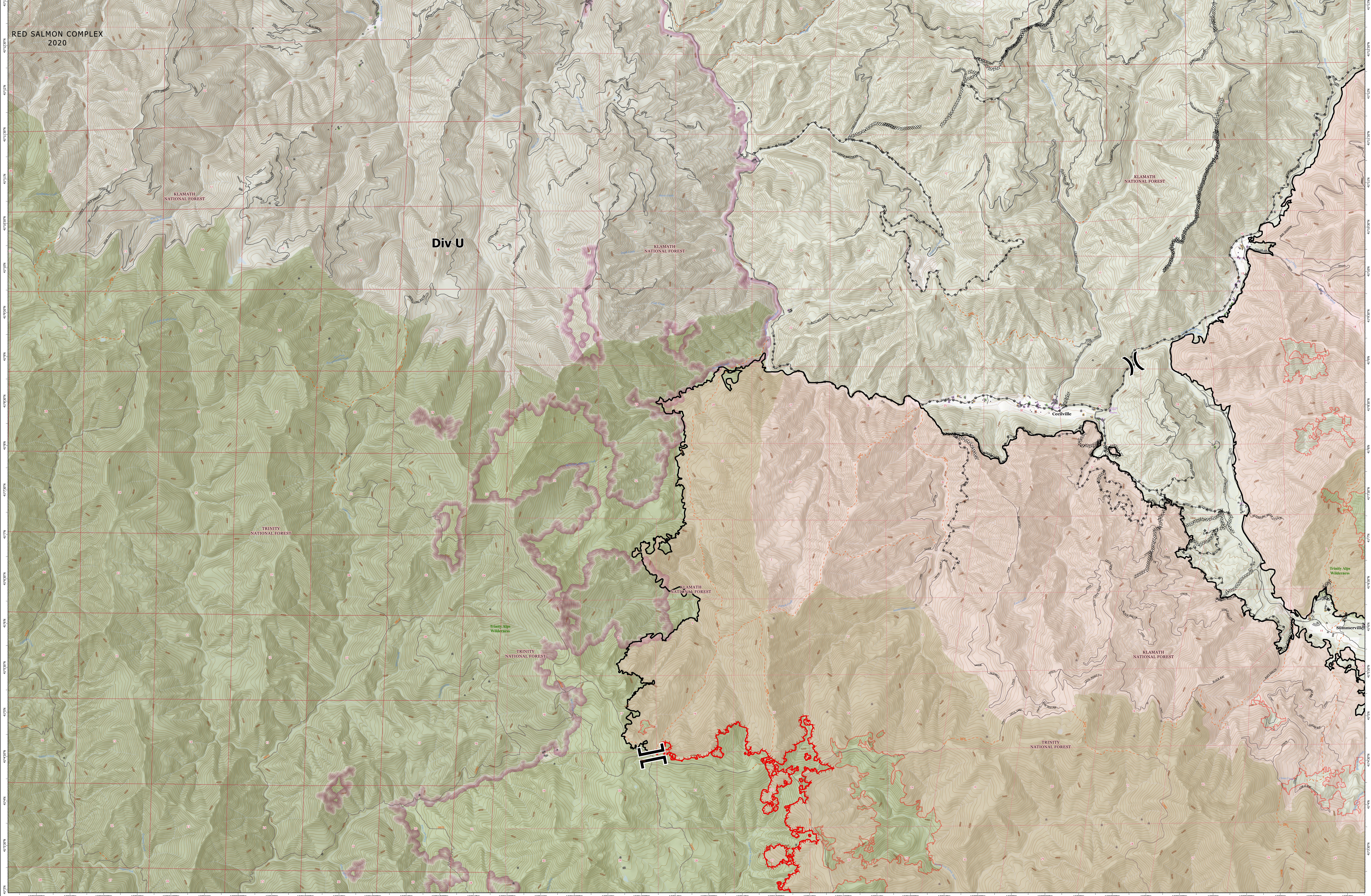
# OPERATIONS: Div T

River Complex  
CA-KNF-006385  
10/05/2021 07:00

- |   |                      |   |                               |   |                    |
|---|----------------------|---|-------------------------------|---|--------------------|
| ⊥ | Branch Break         | — | Completed Road as Line        | ■ | USFS Wilderness    |
| ⌋ | Division Break       | — | Fire Edge                     | ■ | Forest Service     |
| × | No Dip               | — | Contained Line                | ■ | Private Timberland |
| ∞ | Completed Dozer Line | — | Wildfire Daily Fire Perimeter | ■ | Fire History       |
| H | Completed Hand Line  | — | Fire History                  |   |                    |



Scale: 1:24,000  
Spatial Reference: NAD 1983 UTM Zone 10N  
Datum: North American 1983  
Projection: Transverse Mercator

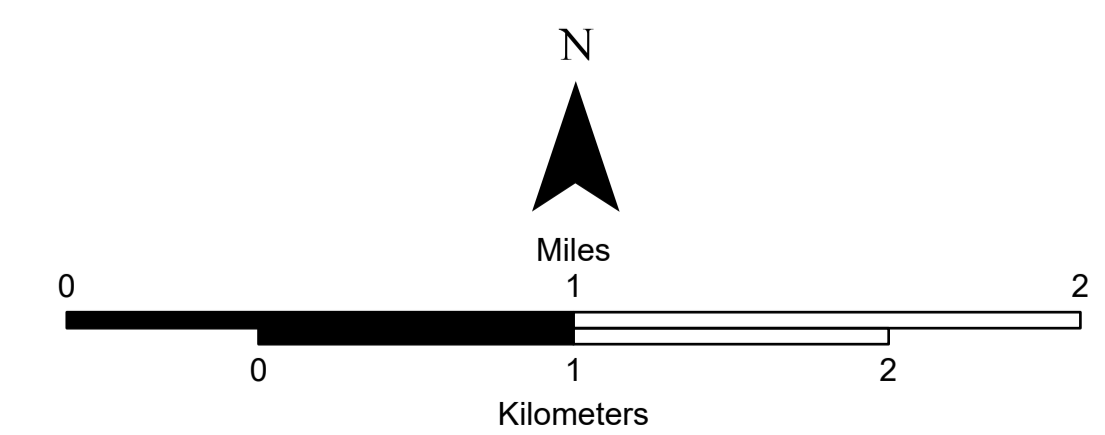


OPS: Div U  
10/05/2021 07:00

# OPERATIONS: Div U

River Complex  
CA-KNF-006385  
10/05/2021 07:00

- ⌋ Branch Break
- ⌋ Division Break
- ✗ No Dip
- ⊘ Completed Dozer Line
- ⊘ Completed Hand Line
- ⊘ Completed Mixed Construction Line
- ⊘ Completed Road as Line
- ⊘ Planned Mixed Construction Line
- ⊘ Access or Improved Road
- ⊘ Fire Edge
- ⊘ Contained Line
- ⊘ Wildfire Daily Fire Perimeter
- ⊘ Fire History
- ⊘ USFS Wilderness
- ⊘ Forest Service
- ⊘ Private Timberland



Scale: 1:24,000  
Spatial Reference: NAD 1983 UTM Zone 10N  
Datum: North American 1983  
Projection: Transverse Mercator